

PROPERTIES

AJMAN

*The convergence of ancient traditions and
contemporary living*

Ajman, the smallest yet most diverse of all emirates, strategically lies in the heart of UAE. It borders Sharjah and is approximately only 25 minutes to Dubai and 45 minutes to Ras Al Khaimah. Hence, it provides easy commute to other emirates.





Boasting some of the most stunning beaches around, Ajman's golden shores sit alongside untouched landscapes, misty mangroves, emerald lagoons, age-old traditions and authentic culture, along with contemporary infrastructures. An abundance of leisure activities and shopping opportunities make it a haven away from the hassles of life.

Indulge in its contemporary lifestyle, but still get lost in the tranquil world of old traditions. Discover amazing restaurants, while exploring the streets lined with impressive mansions and ancient monuments. The architectural mix of traditions with today's modern comforts, gives Ajman its own unique vibe compared to other emirates in the UAE - and it all waits to welcome you.

*A City of Ever Growing Potential and
Investment Opportunities.*

A fast developing city, and an emerging hub for prospective investors to live and work in, Ajman's Free Zone and visa extensions for investors is injecting more liquidity in the local economy, and is boosting the underlying confidence of foreign investors.

With UAE government's new laws to grant expatriate citizenships, paired with the easing of rules to provide a more conducive atmosphere, Ajman is rapidly growing as a diverse and sustainable location, attracting large numbers of investors who are keen to tap into its lucrative business opportunities.





Gulf OWE

Project Name: [Illegible]
Location: [Illegible]
Developer: [Illegible]



AL AMEERA

VILLAGE

Al Ameera Village, a unique masterpiece at 5.5 million sqft, with 5 signature skyscrapers and 44 heritage styled residential towers located in the serene suburb of Al Yasmeen, offering a complete range of amenities and luxuries to be your dream home.







LOBBY

LIFT LOBBY





BEDROOM



KITCHEN

WASHROOM



CONNECTIVITY



19 minutes
From Amina Hospital



18 minutes
From City Centre Ajman



17 minutes
From Sharjah International
Airport



15 minutes
From Ajman Beach



3 minutes
From AL Hamidiya park



24 minutes
From Dubai International
Airport



16 minutes
From Al Zorah Natural
Reserve

EMIRATES CITY

City project by high
- real estate company...
مشروع العالیه سیتی -
شركه الراستخون للعقارات

Paradise Lake Tower
B5 Emirates City
Paradise Lake Tower B5
by Sweet Homes Group

Al Helao farm Villa

AL AMERAH
العامرة

HELIO 2
الحلیو 2

Ajman Teacher
Training Institute
معهد تدريب المعلمین

Al Watan University
جامعة الوطن

Shk. Rashid
Almualla Mosque

Black camel cafe
مقهی الجمل الأسود

AL AMEERA
VILLAGE

Sheikh Maktoum Bin Rashid St

AL Hamidiya Park
حديقة الحمیدیة

Al Mahara, cafeteria
كافیتريا المحارة

Mandara Equestrian shop

Helio Park

Black and white coffee

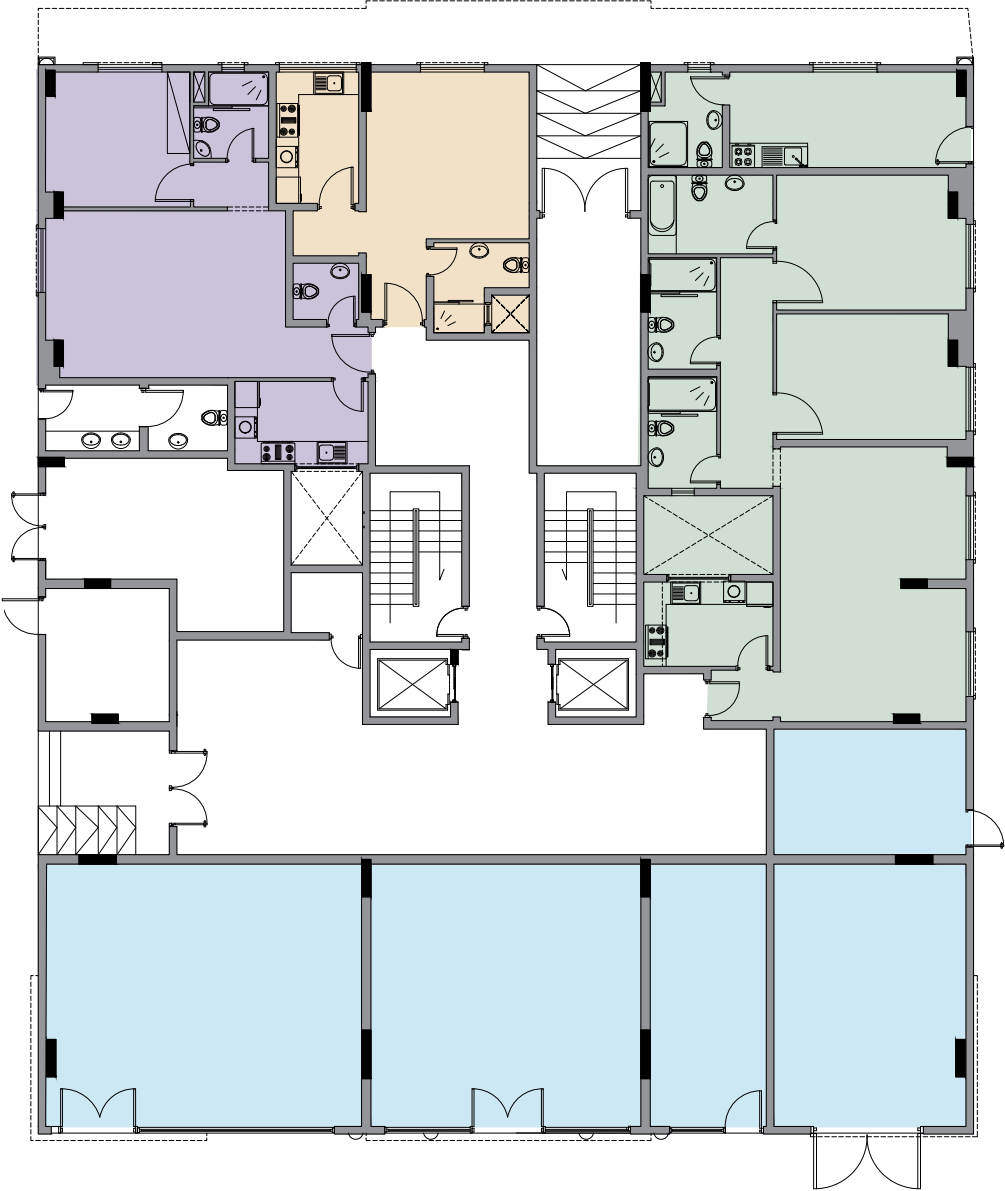
Pet Care - Professional
Grooming

AL YASMEEN
الياسمین

Taw, Maghis

FLOOR PLAN

GROUND FLOOR



1 BEDROOM

STUDIO

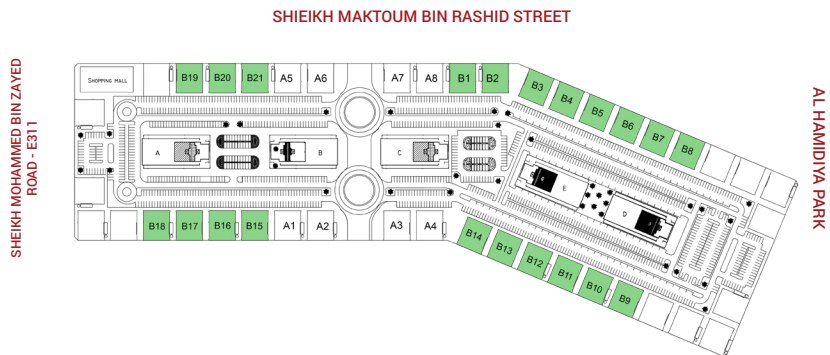
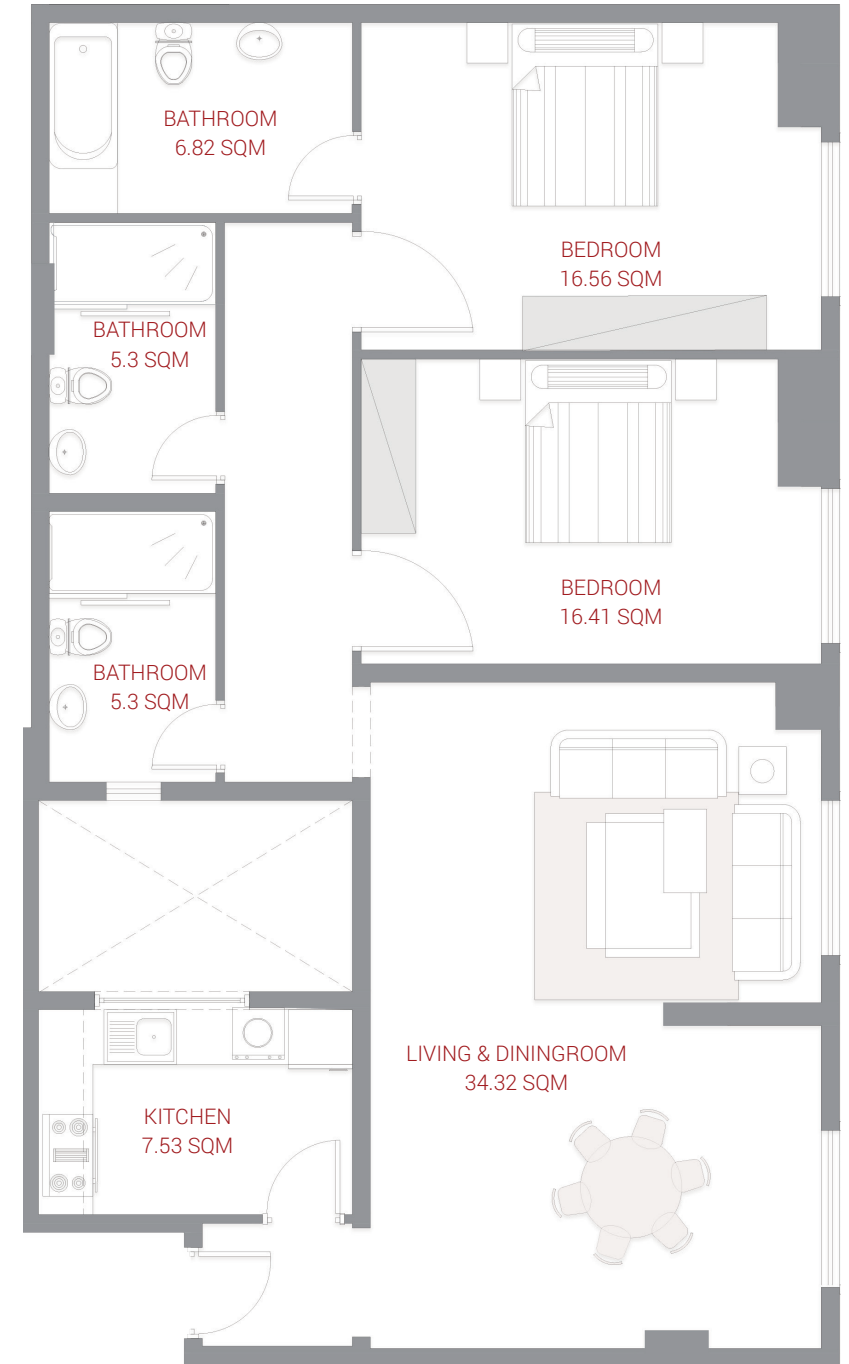
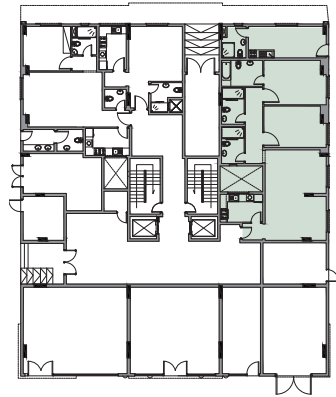
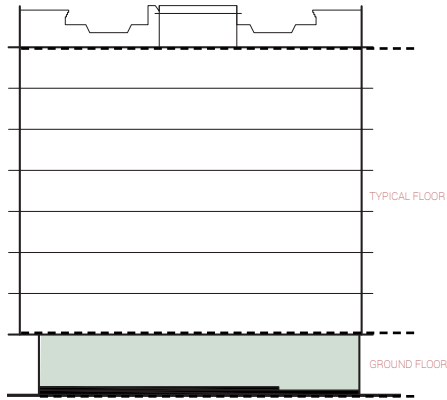
2 BEDROOM

RETAIL AREA

GROUND FLOOR 2 BEDROOM

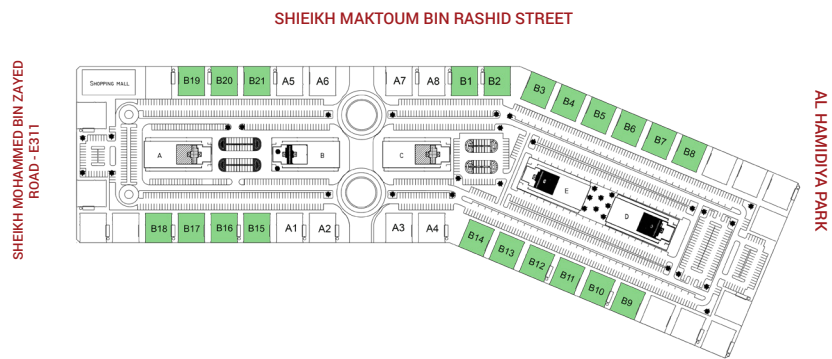
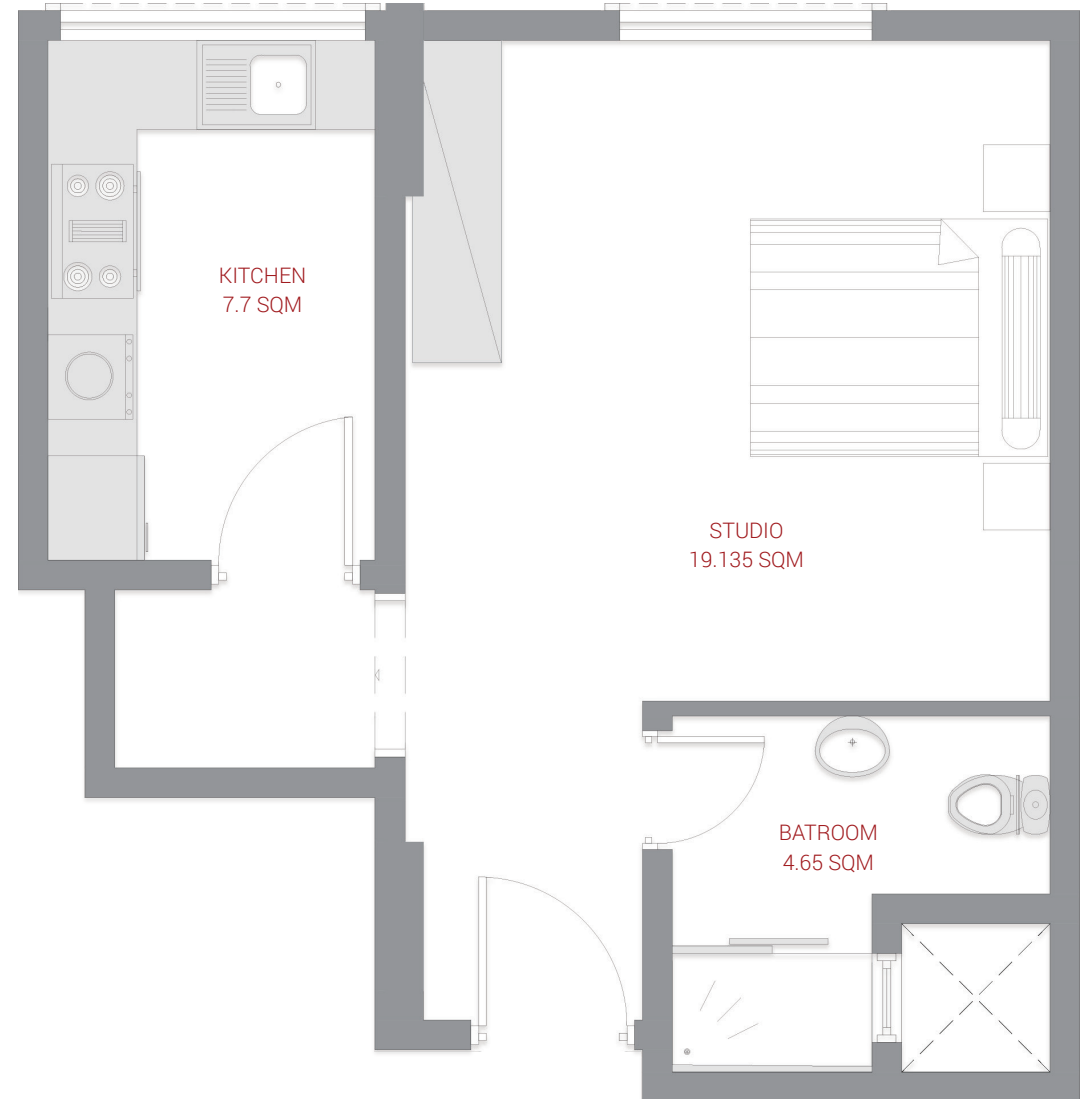
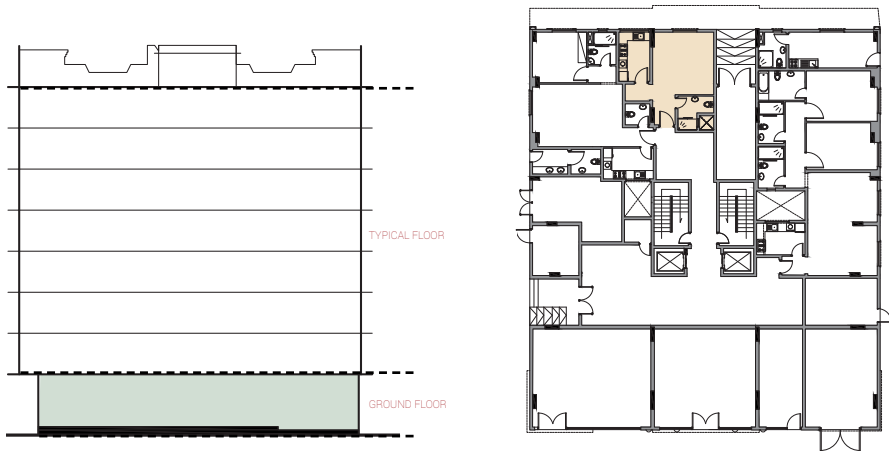
Series no: 01

Gross area 149.28 sqm 1606.86 sqft



GROUND FLOOR STUDIO

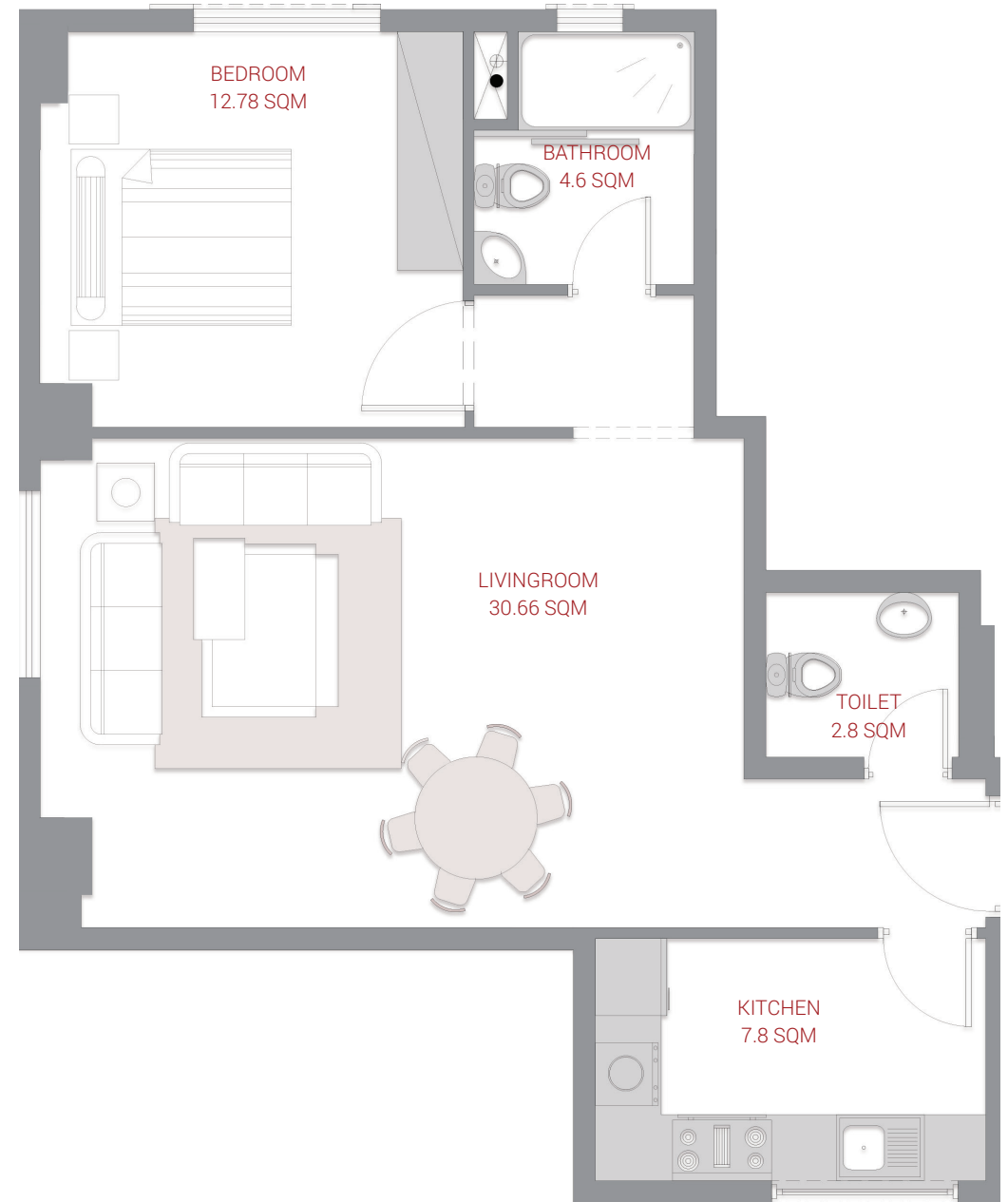
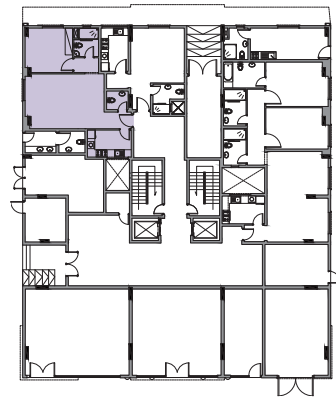
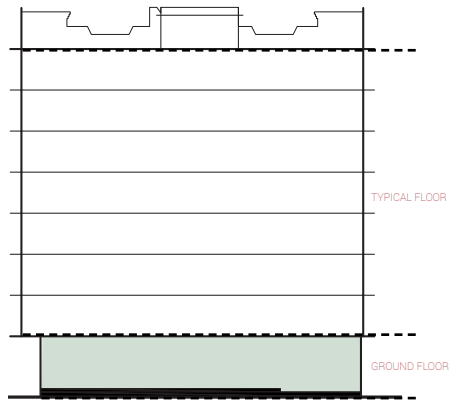
Series no: 02
Gross area 53.57 sqm 576.60 sqft



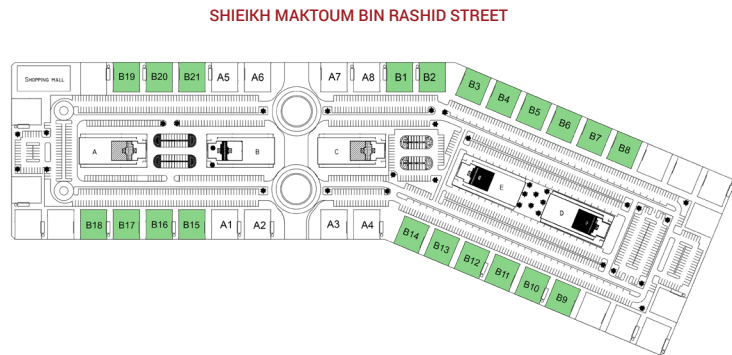
GROUND FLOOR 1 BEDROOM

Series no: 03

Gross area 88.27 sqm 950.15 sqft

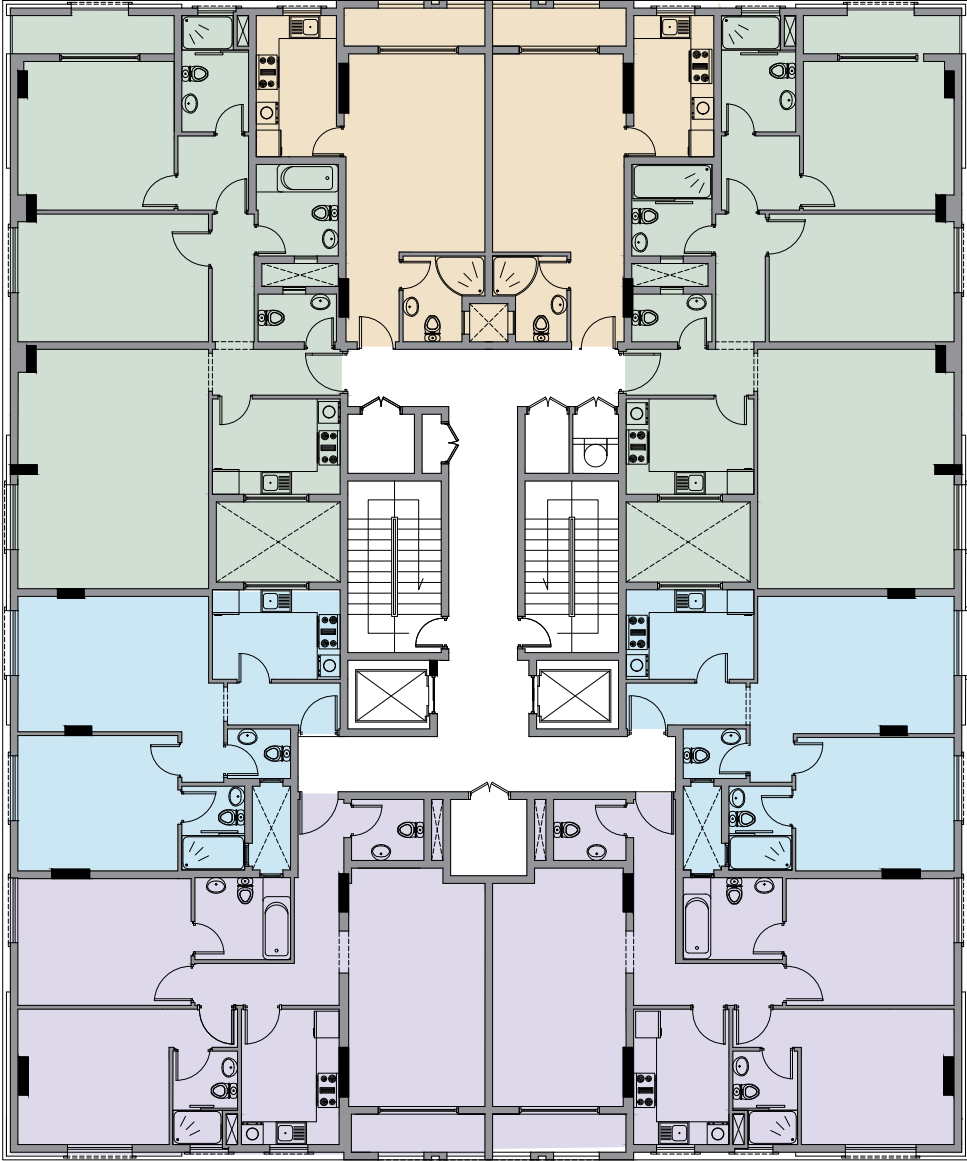


SHEIKH MOHAMMED BIN ZAYED
ROAD - E311



TYPICAL FLOOR

TYPICAL FLOOR



 TYPICAL FLOOR STUDIO

 TYPICAL FLOOR 1 BEDROOM

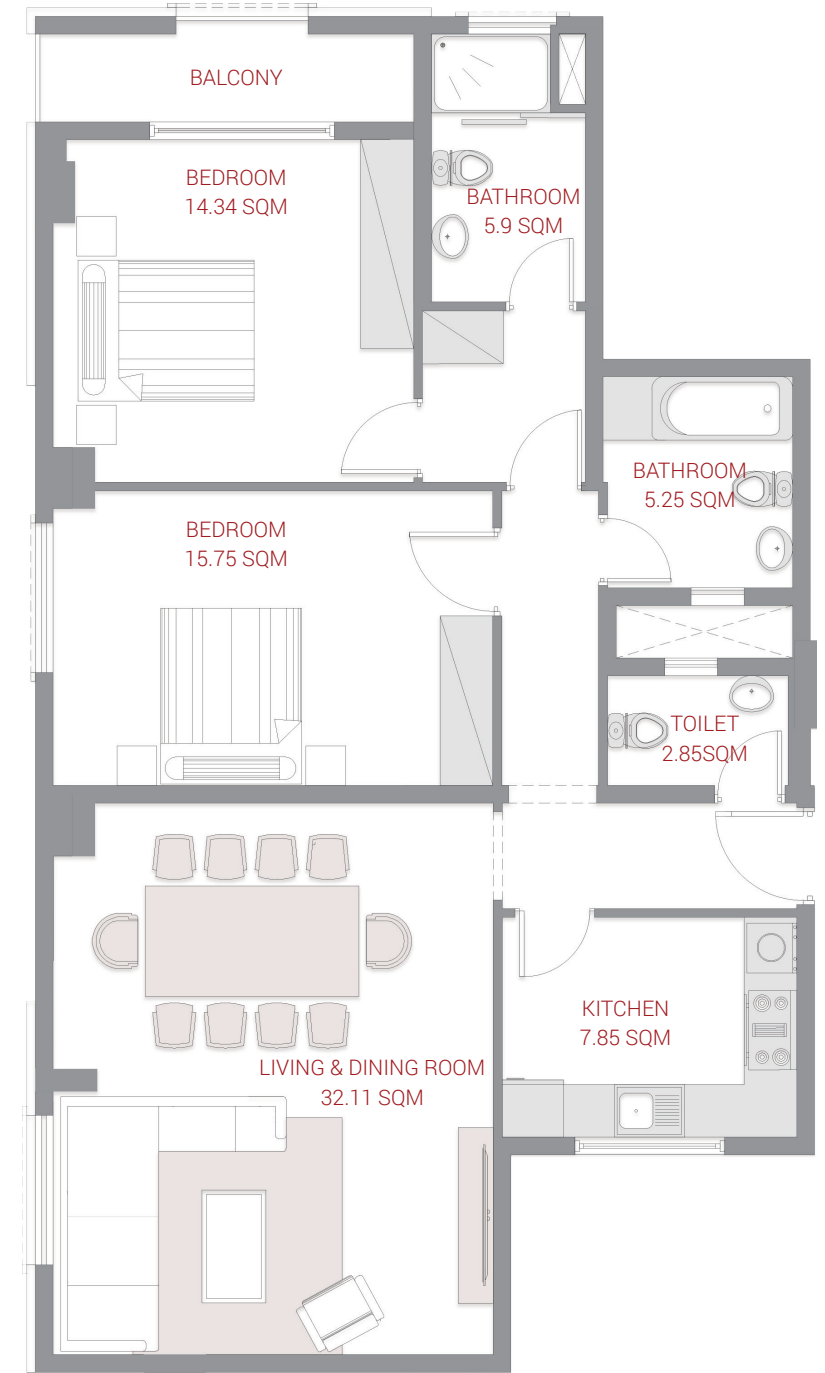
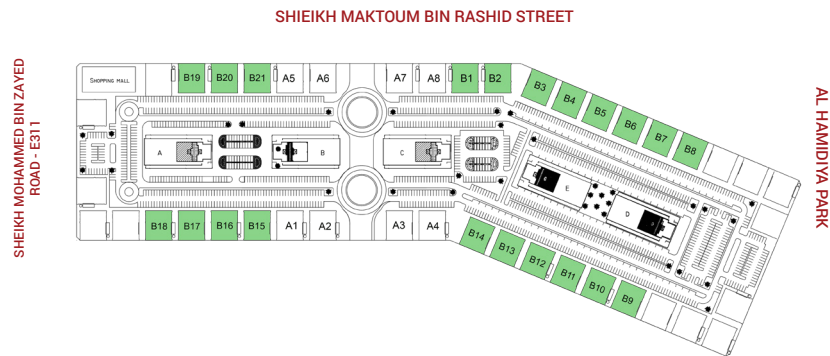
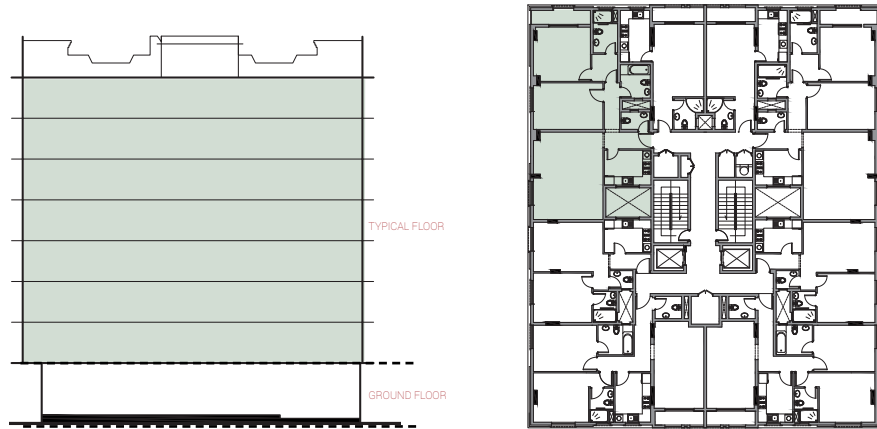
 TYPICAL FLOOR 2 BEDROOM TYPE 1

 TYPICAL FLOOR 2 BEDROOM TYPE 2

TYPICAL FLOOR

2 BEDROOM TYPE 1 A

Series no: 01
Gross area 145.97 sqm 1571.25 sqft

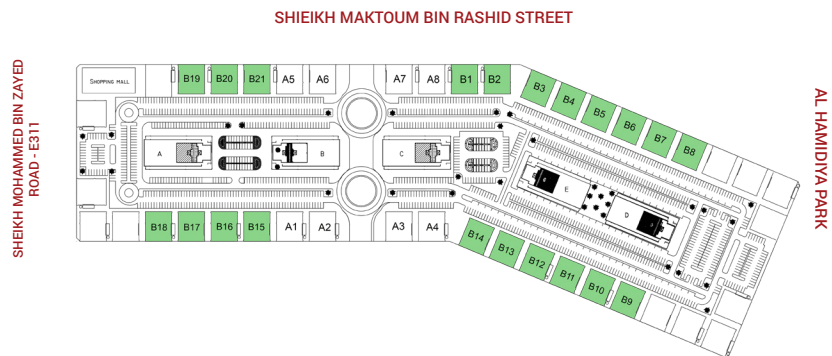
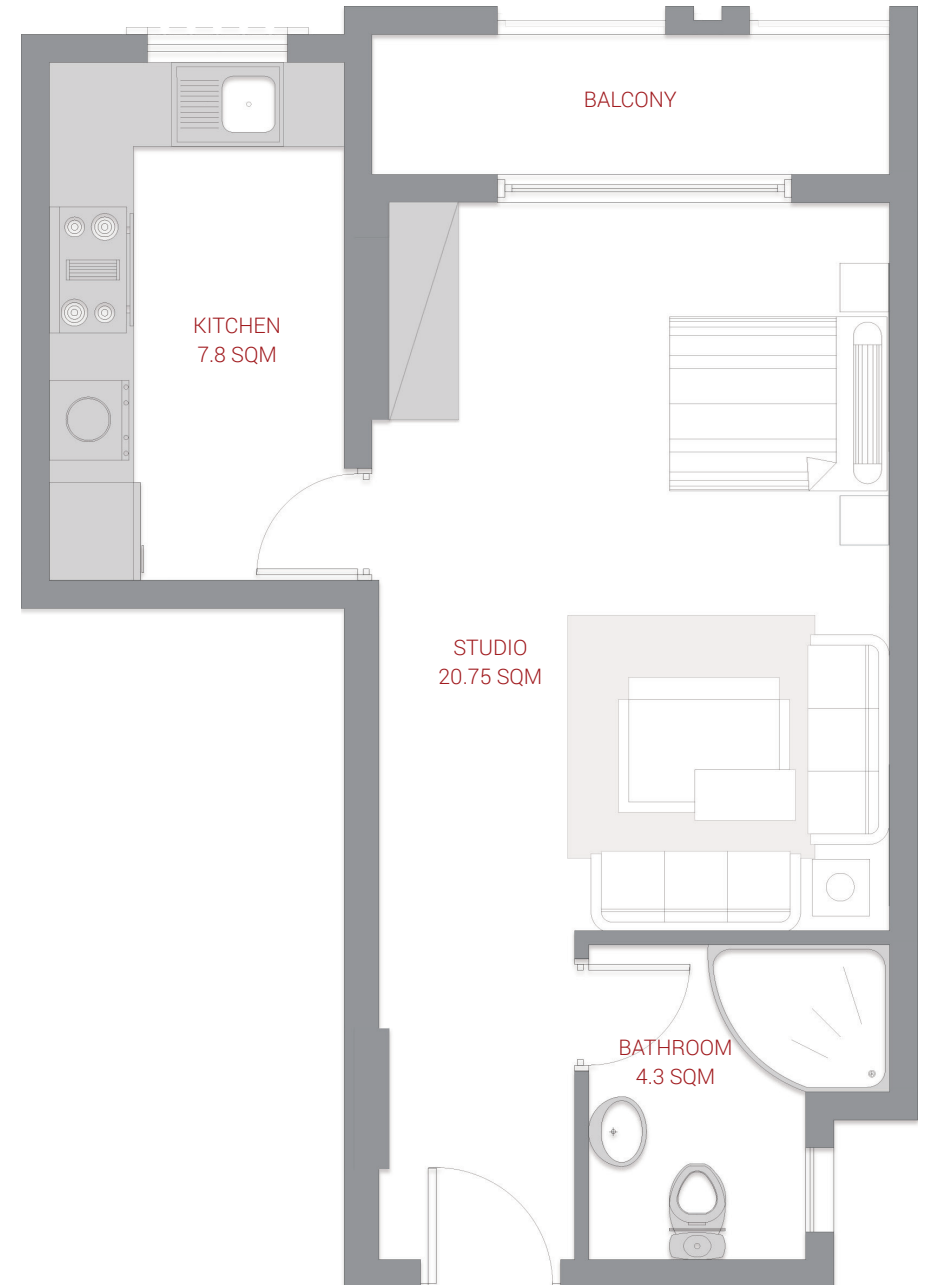
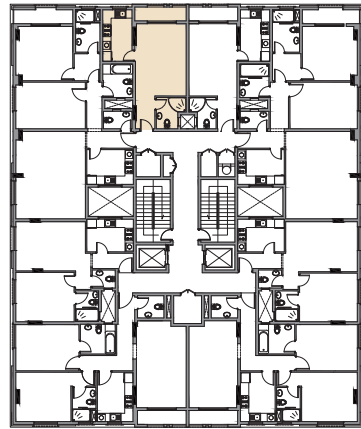
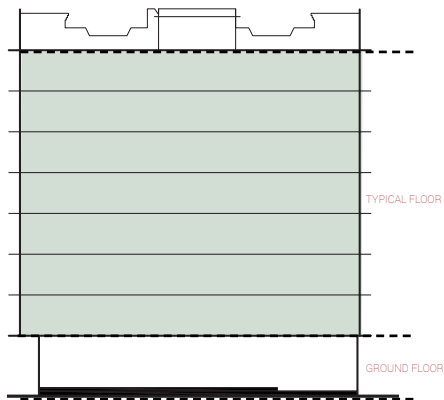


TYPICAL FLOOR

STUDIO TYPE 1A

Series no: 02

Gross area 55.29 sqm 595.10 sqft

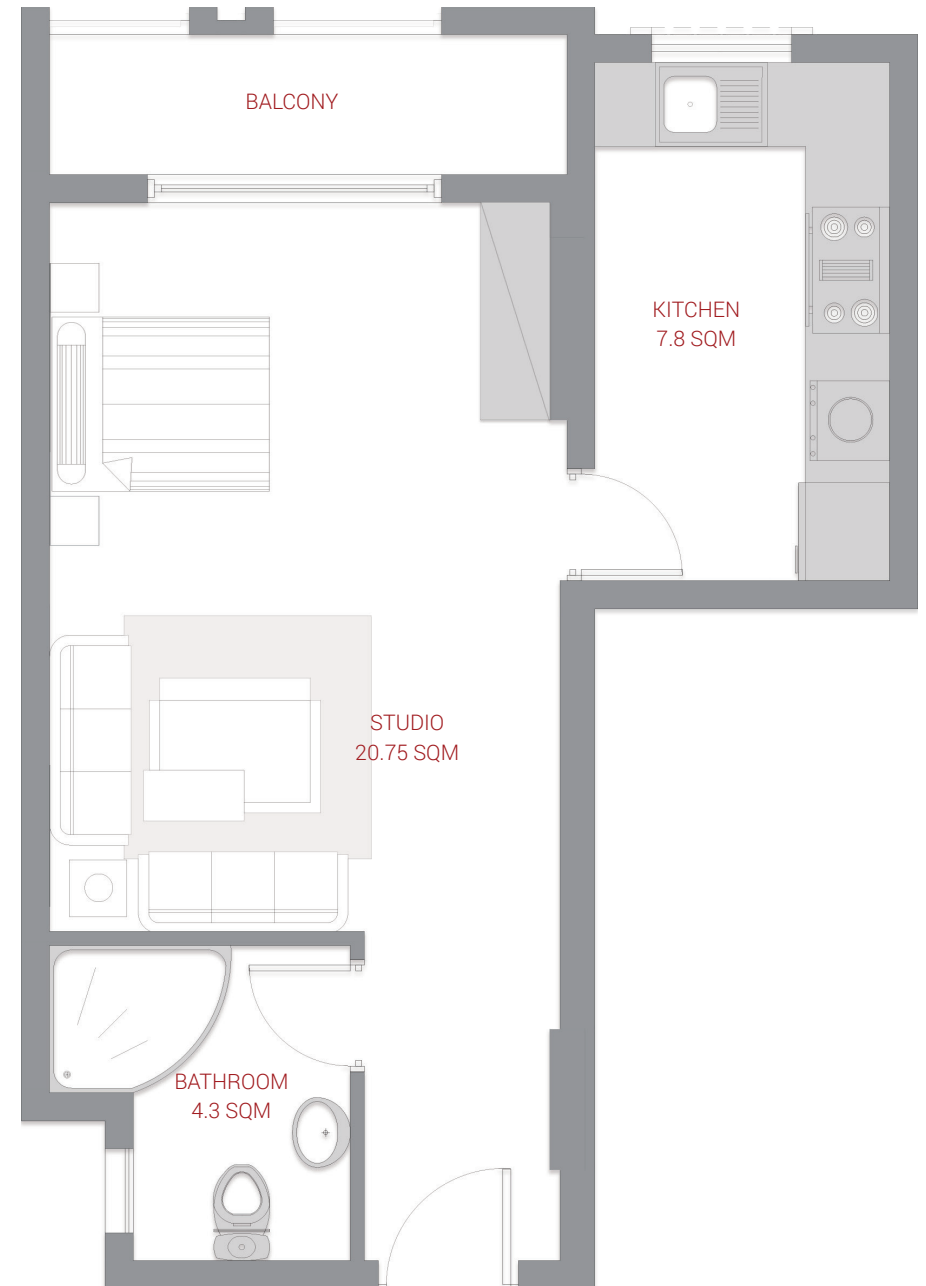
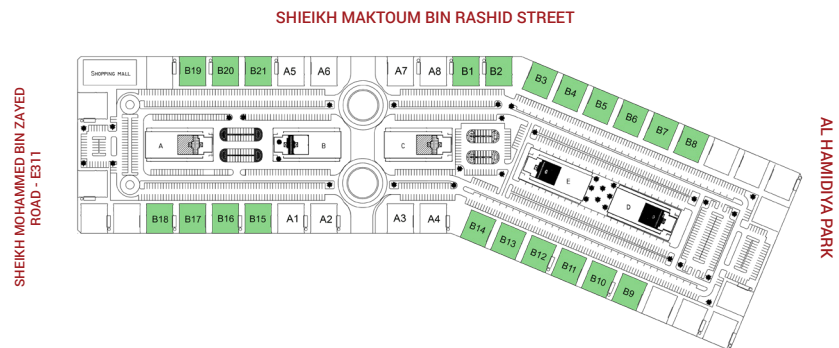
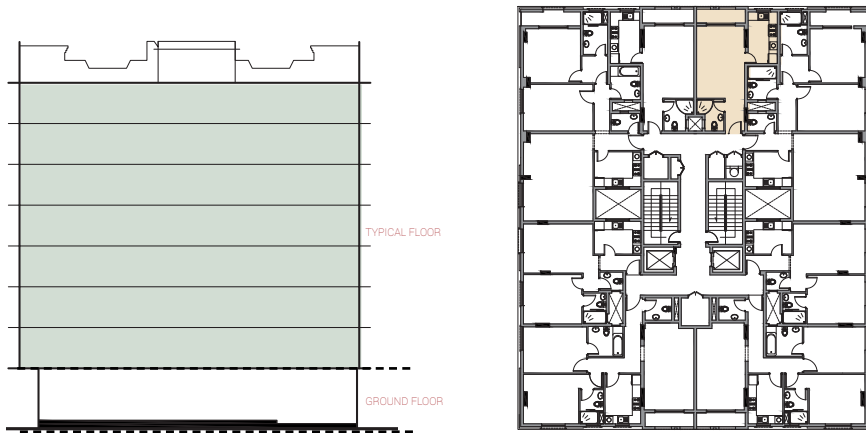


TYPICAL FLOOR

STUDIO TYPE 1 B

Series no: 03

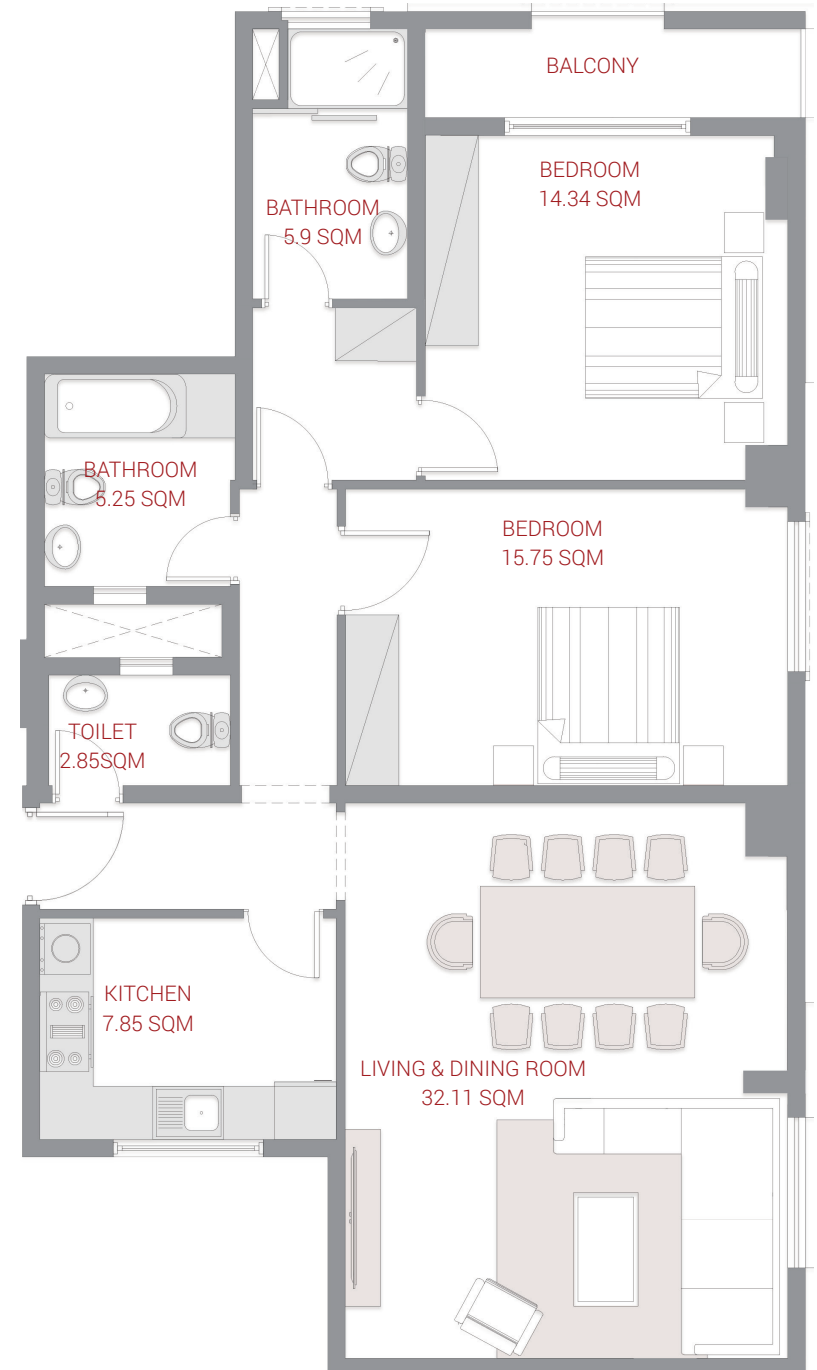
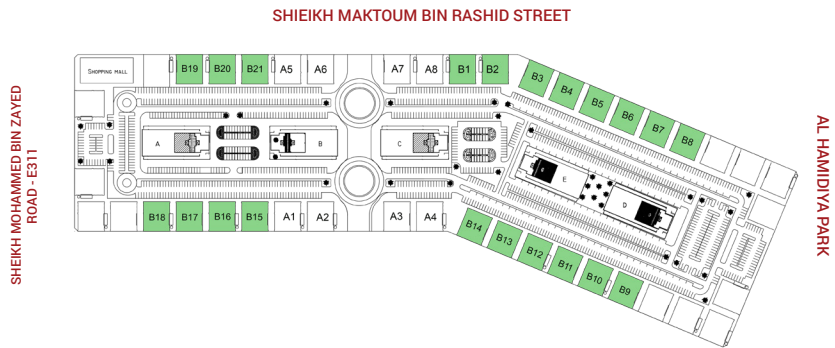
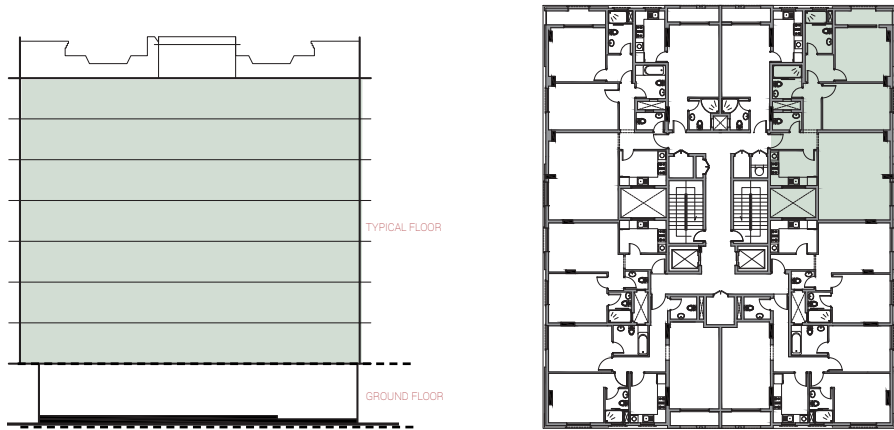
Gross area 55.29 sqm 572.57 sqft



TYPICAL FLOOR

2 BEDROOM TYPE 1 B

Series no: 04
Gross area 147.62 sqm 1588.92 sqft

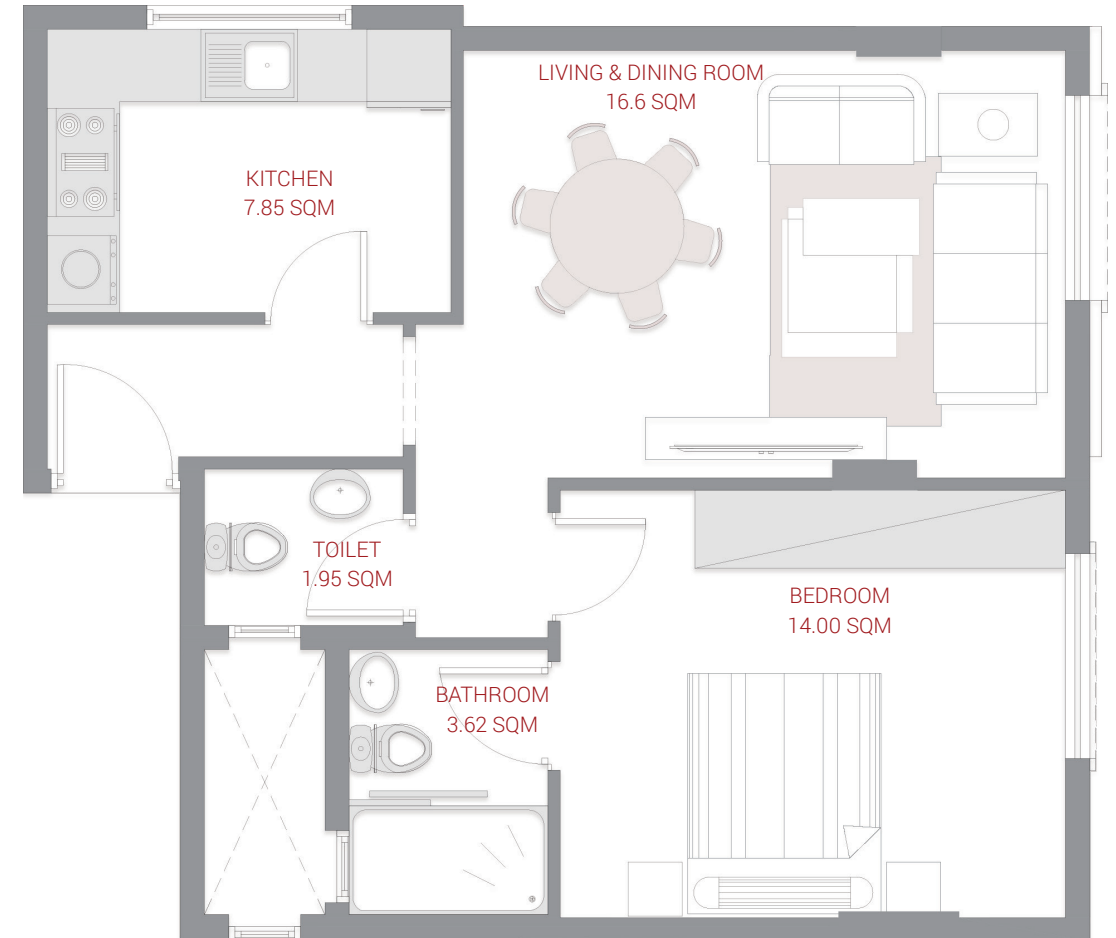
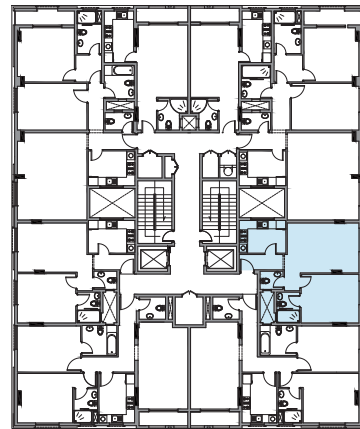
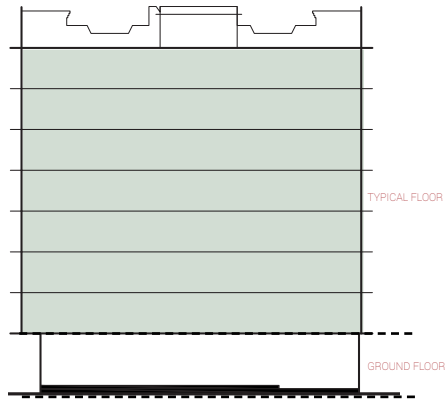


TYPICAL FLOOR

1 BEDROOM TYPE 1 B

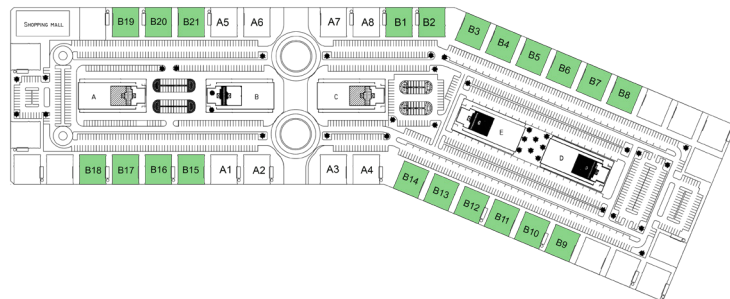
Series no: 05

Gross area 72.85 sqm 788.41 sqft



SHIEKH MAKTOUM BIN RASHID STREET

SHEIKH MOHAMMED BIN ZAYED ROAD - E311

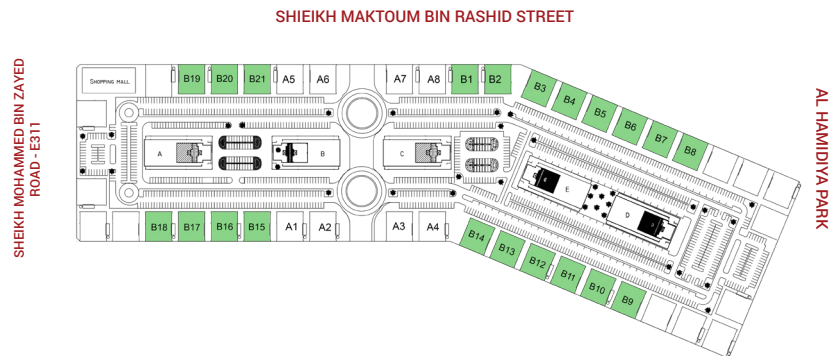
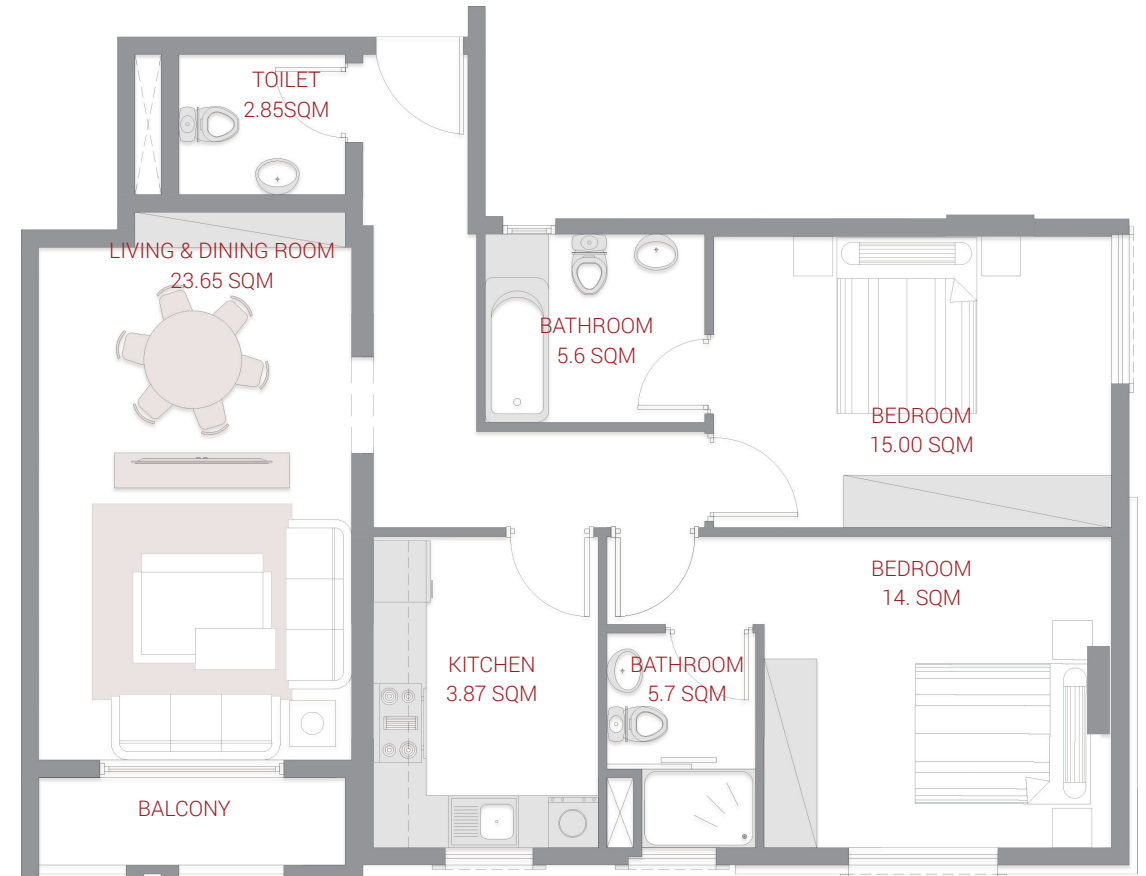
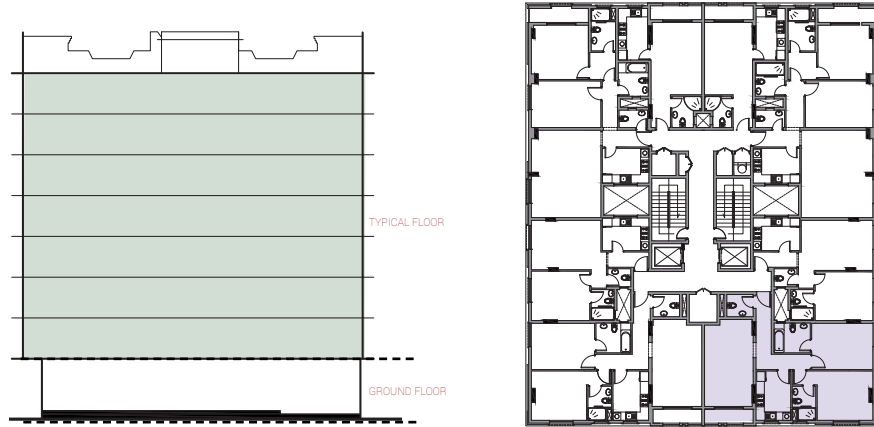


AL HAMIDIYA PARK

TYPICAL FLOOR

2 BEDROOM TYPE 2 B

Series no: 06
Gross area 125.69 sqm 1352.91 sqft

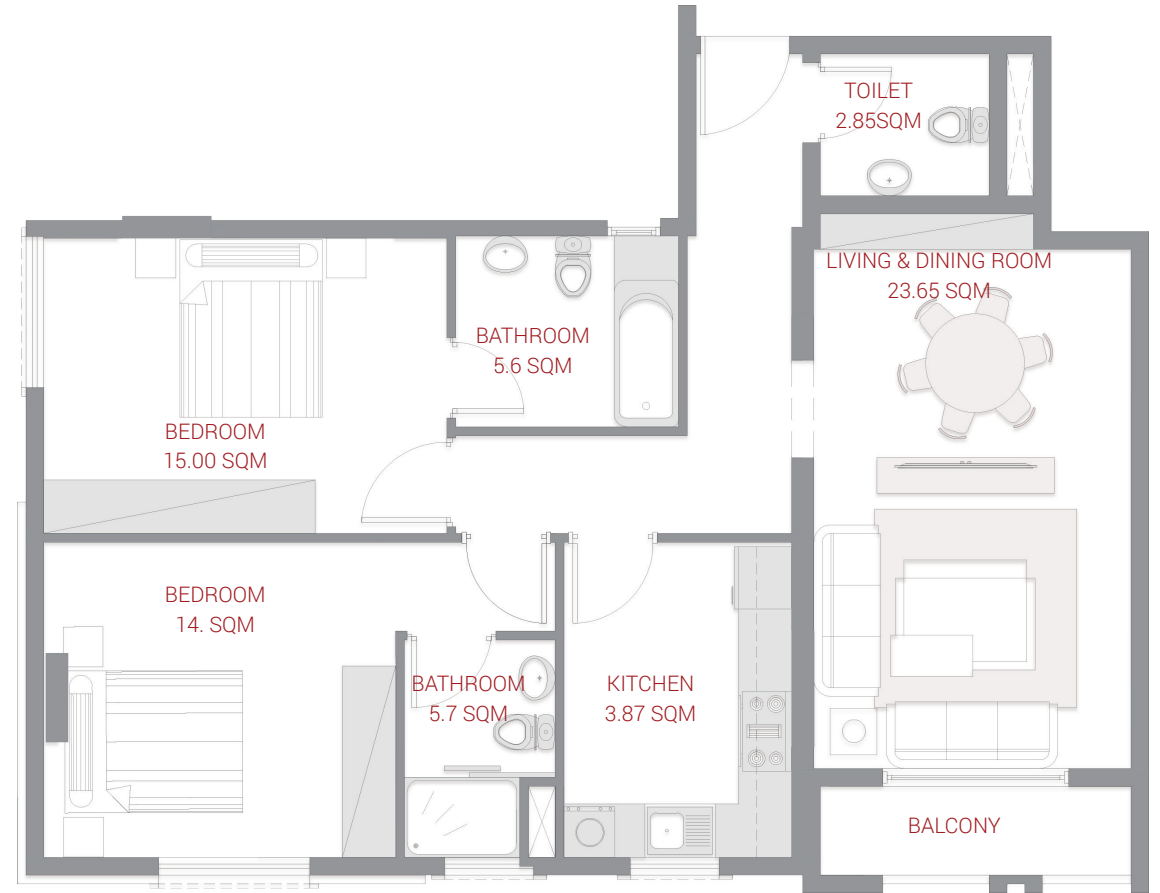
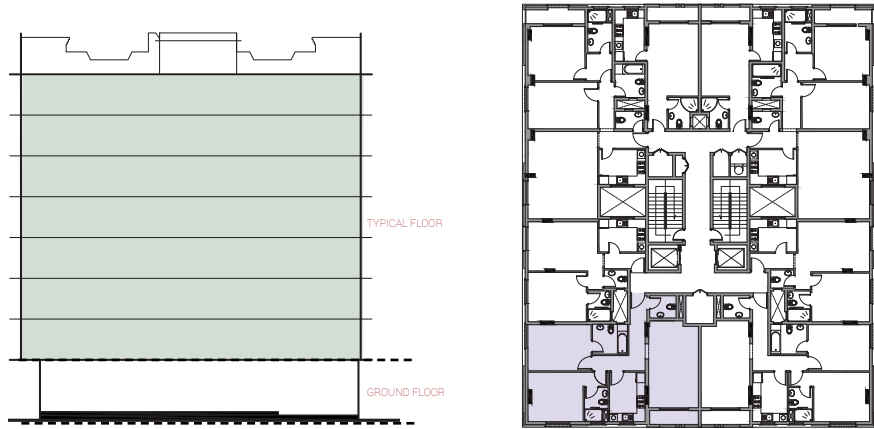


TYPICAL FLOOR

2 BEDROOM TYPE 2 A

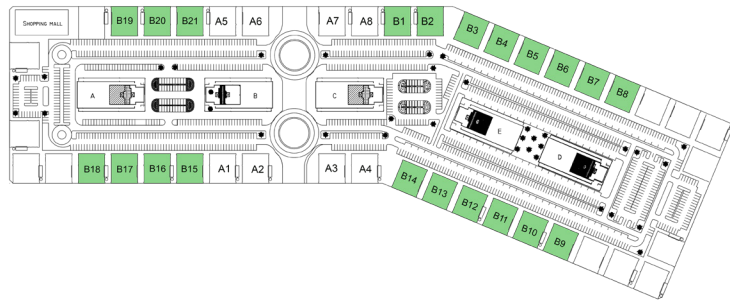
Series no: 07

Gross area 125.69 sqm 1370.57 sqft



SHIEKH MAKTOUM BIN RASHID STREET

SHEIKH MOHAMMED BIN ZAYED ROAD - E311

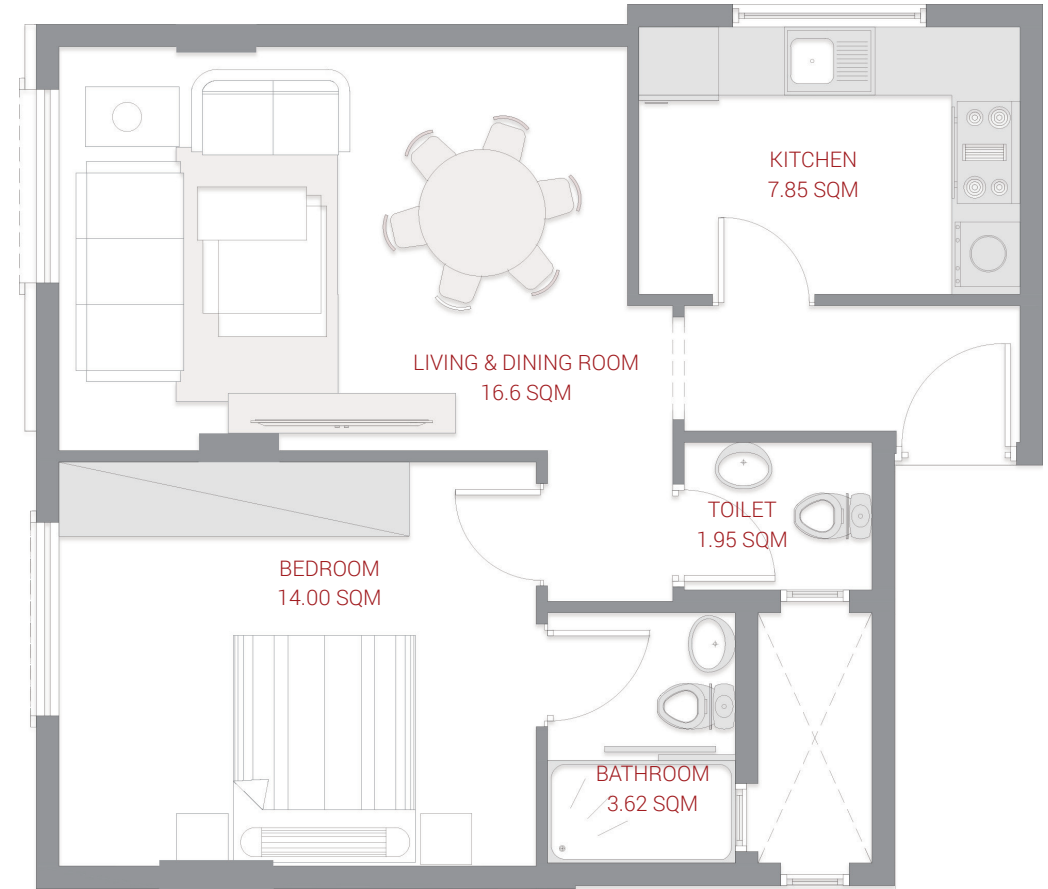
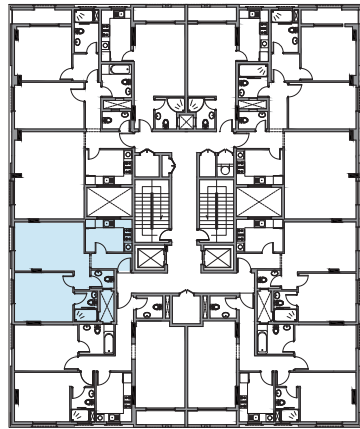
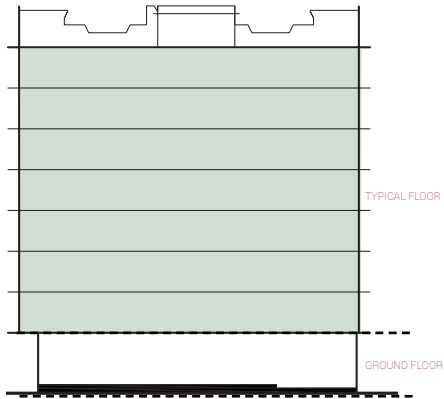


AL HAMIDYA PARK

TYPICAL FLOOR

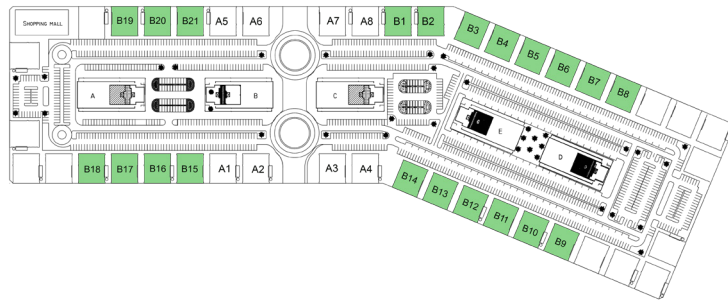
1 BEDROOM TYPE 1 A

Series no: 08
Gross area 73.25 sqm 784.10 sqft



SHIEKH MAKTOUM BIN RASHID STREET

SHIEKH MOHAMMED BIN ZAYED ROAD - E311



AL HAMIDIYA PARK



AL AMEERA

VILLAGE

PAYMENT PLANS

PLAN	7 YEARS
DOWN PAYMENT	5%
100% FREEHOLD	



The organisation has consistently demonstrated its commitment to provide clients with truly unique offerings across all parameters of construction and in every aspect of its business. GJ Properties was formed with the goal to develop properties solutions that not only meet, but exceed client expectations - whether it is investment or lifestyle.

The foundation of GJ Properties is the belief that all customers deserve the best service possible. This drive has pushed the entity to work harder towards offering great projects at affordable prices. Having launched various properties in Ajman, including villas, apartments and other large-scale projects, GJ Properties has been consistently achieving great success.



THE BETTER CHOICE

GJ Properties is an Ajman based property developer, established in 1998. One of the largest and fastest growing providers of residential, commercial and industrial properties in Ajman, GJ Properties with over 20 years of experience, has been recognized as the **'Best Property Agency' by the Arabian Property Awards 2020-21'**

GJ Properties focused team of highly qualified engineers, architects, and construction personnel demonstrates their superior performance in the properties industry. Stemming from building and maintaining high-quality homes and developments, their design principles are rooted deeply in understanding comfort and convenience - all emerging from a core of ergonomics.

Whether a rental property or a beachfront home, GJ Properties expert team will create exactly what a thriving community needs. GJ Properties ensures every property they develop shall provide comfort and convenience for years to come - even with the changing trends of modern architecture. Devoted to creating homes for generations, GJ Properties has built an elegant legacy of providing the best in quality construction standards and only excellence in customer service.

