

**MALTEPE**  

---

**PROJECT**



# GENERAL INFORMATION



## CONCEPT

Family Oriented Concept



## LOCATION

Maltepe - Yali Mahallesi



## STATUS

Ready to Move in



## VIEW

Sea View - City View -  
Landscape View



## LAND AREA

5400 sqm



## LANDSCAPE AREA

70%



## NUMBER OF BUILDINGS

2 Blocks



## NUMBER OF APARTMENT

163



## TYPE OF APARTMENTS

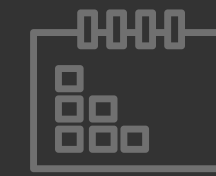
3+1 - 4+1 Dublex - 4+2  
Dublex - 5+2 Dublex



## SMART HOME SYSTEM



# LEGAL INFORMATION



## DELIVERY DATE

Ready To Move



## TITLE DEED STATUS

Ready



## TITLE DEED FEES

No Title Deed Fees



## VAT

%1



## VALUATION REPORT

Exact Amount



## CITIZENSHIP

Suitable For  
Citizenship



## SOCIAL FACILITIES



**GYM**



**CHILDREN  
PLAYGROUND**



**STEAM ROOM**



**TURKISH  
BATH**



**INDOOR  
PARKING**



**SAUNA**



**VOLLEYBALL  
COURT**



**SQUASH  
COURT**



**BASKETBALL  
COURT**



**OUTDOOR  
SWIMMING  
POOL**

# LAND MARKS



## HEALTH

Dr. Tahir Optic Hospital	<b>1.2 km</b>
Medical Park Maltepe	<b>1.4 km</b>
Vera Private Hospital	<b>3 km</b>
Dr. Lütfi Kadir Hospital	<b>5 km</b>



## TRANSPORTATION

Maltepe Train Station	<b>350 m</b>
Turgut Özal Bus Station	<b>550 m</b>
Maltepe Metro Marmaray	<b>350 m</b>
Ido Ferry Station	<b>500 m</b>
Sabiha Gökçen Airport	<b>27 km</b>



## EDUCATION

Maltepe University	<b>8 km</b>
Marmara University	<b>3.2 km</b>
Bahçeşehir Collage	<b>1.7 km</b>
Alfayez International School	<b>9 km</b>
Public School	<b>1.3 km</b>



## SHOPPING

Ritim İstanbul	<b>3 km</b>
Maltepe Park	<b>3 km</b>
Piazza Shopping Mall	<b>3 km</b>
Ikea	<b>4.4 km</b>
Hilltown Mall	<b>6 km</b>

# EXTERIOR DESIGN



# INTERIOR DESIGN



# SOCIAL FACILITIES





# PLANS

**3+1**

**133 m<sup>2</sup>**  
gross



# PLANS

**4+1  
Duplex**

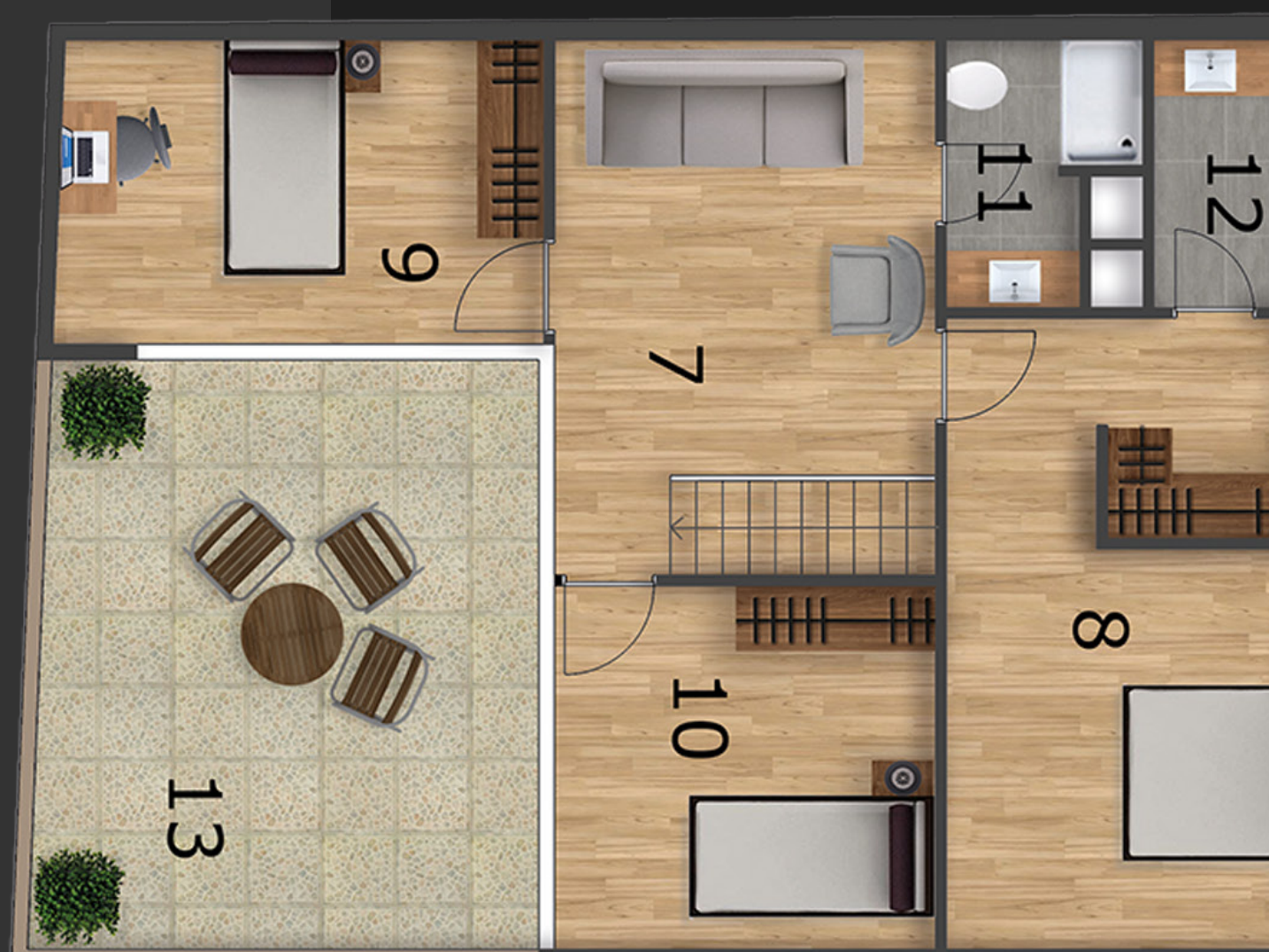
**260 m<sup>2</sup>**  
gross



# PLANS

**4+2  
Duplex**

**260 m<sup>2</sup>**  
gross



# MAP

