



**RADIANT**  
real estate

# **RADIANT BAY**

PART OF **RADIANT SQUARE**



**Elevate Your Living  
Experience.**



## About Radiant.

At Radiant Real Estate, we're dedicated to creating sustainable communities that enrich the lives of our residents and the surrounding neighborhoods. We aim to deliver high-quality properties that meet the needs and aspirations of our customers, while also contributing to the overall well-being of the communities we serve. Our commitment to integrity, transparency, and excellence in all aspects of our business is reflected in everything we do, and we strive to be a trusted and respected partner for our customers, investors, and stakeholders.



## Radiant Square: Iconic Towers with Stunning Views.

Radiant Square is an iconic mixed-use tower located in the heart of Reem Island. Offering stunning sea views and spacious office spaces, this development is the epitome of luxury living. With its 7 podiums and towers with up to 44 floors, Radiant Square is a testament to innovative design and construction, providing a unique and unparalleled experience for its residents and visitors alike. Whether you're looking for a duplex unit with a view of the sea or an office space that inspires productivity, Radiant Square has something for everyone.



---

Where Modern Living  
Meets Radiant Style.

## About Radiant Bay.

Radiant Bay is a part of the larger Radiant Square development, a multi-tower mixed-use project located in Reem Island. As one of the towers in this iconic development, Radiant Bay offers all the benefits of a vibrant and thriving community, including luxurious living, world-class amenities, and stunning waterfront views. With its prime location and connection to the larger Radiant Square project, residents of Radiant Bay can enjoy a wide range of amenities and facilities at their doorstep.



—  
A New Standard of Luxury Living.

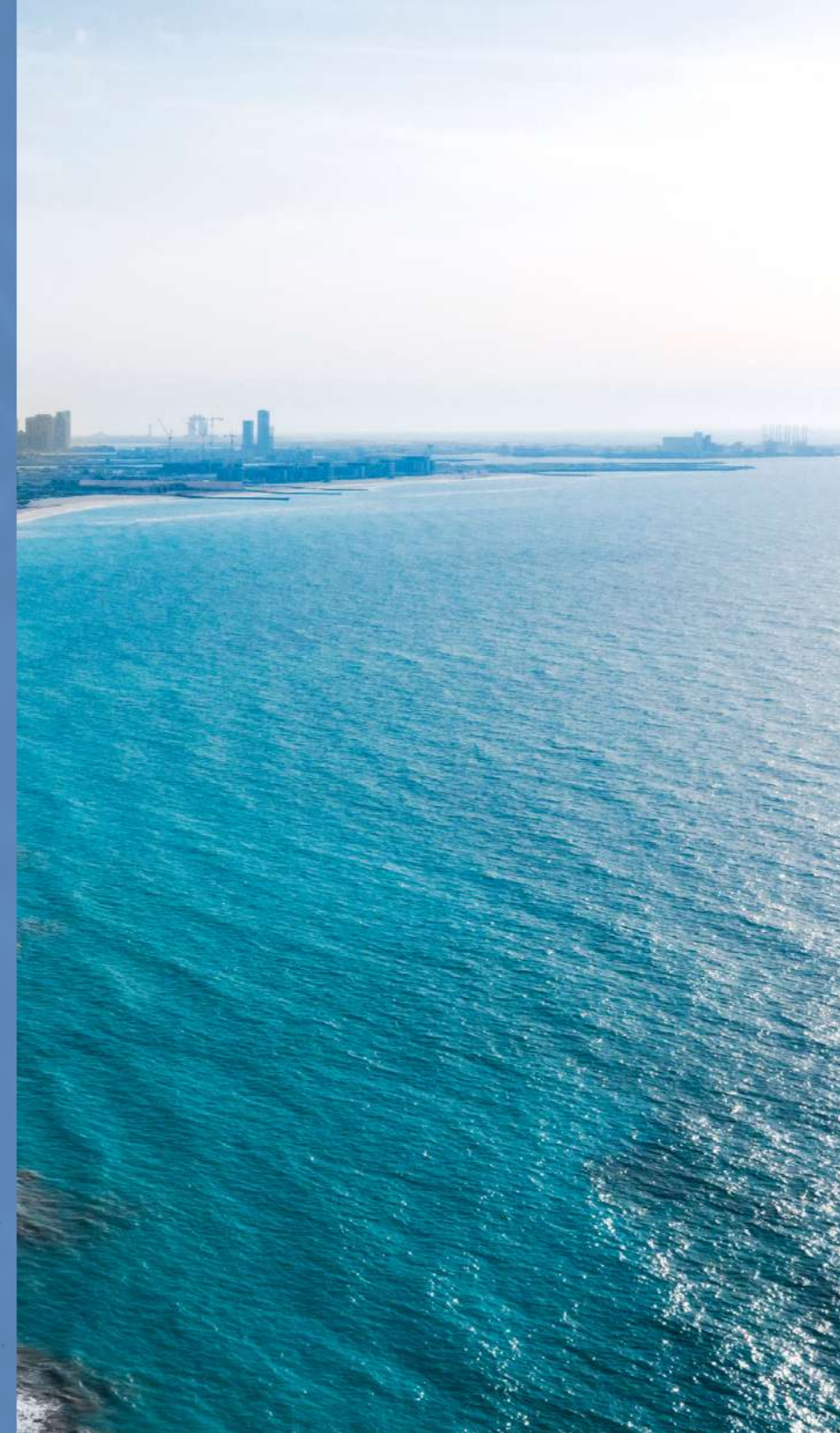
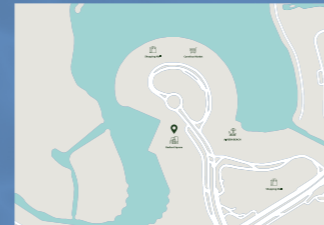


# Discover the Luxurious Lifestyle of Reem Island.

Reem Island is a vibrant and thriving community located in Abu Dhabi. This beautiful island is known for its luxurious living, world-class amenities, and stunning waterfront views. With a range of residential and commercial properties, Reem Island offers something for everyone, from families to young professionals. The community is well-connected with easy access to major highways, making it convenient to get to and from the city center. With its lush parks, trendy restaurants, and luxurious shopping centers, Reem Island is the perfect place to call home for those seeking a modern and cosmopolitan lifestyle in Abu Dhabi.

## Landmarks Nearby:

- 📍 3 min to Reem Mall
- 📍 4 min to Reem Hospital
- 📍 1 min to Carrefour Market
- 📍 3 min to Al Fay Park
- 📍 3 min to Shams Boutik
- 📍 5min to Galleria Mall (Sea & Galleria Mall View)



—  
**Coastal Living at its Finest.**

# Our Amenities.

 +1200 Apartments

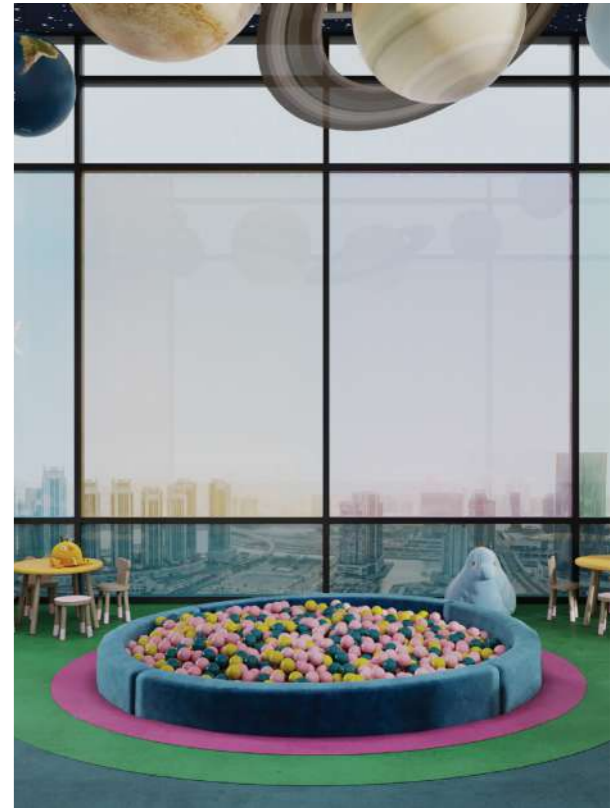
 3 Swimming Pools

 50 Commercial Spaces

 Variety of Kids Areas

 Cafes/Restaurants With Stunning Views

 Gym





## Premier Pool & Gym Facilities.

We believe in providing our residents with exceptional amenities that enhance their quality of life. Our pool and gym facilities are no exception. Our state-of-the-art gym is equipped with the latest fitness equipment and provides a range of exercise options for residents to stay healthy and active. Meanwhile, our swimming pool offers a refreshing escape from the city heat, with a stunning view of the surrounding area. Whether you're looking to start your day with a workout or unwind after a long day at work, our pool and gym facilities provide the perfect space for you to achieve your fitness goals.



—  
**Relax and Recharge:  
Enjoy the Pool & Gym at Radiant Towers.**

## Connecting Lobbies.

At Radiant Real Estate, we understand that convenience and comfort are essential for our residents. Our buildings feature well-designed connecting lobbies that provide a seamless transition between indoor and outdoor spaces, creating a welcoming atmosphere for residents and guests. Additionally, our high-speed elevators provide easy and efficient access to all floors, ensuring that residents can move around the building with ease. With a focus on quality and innovation, our buildings are designed to provide a seamless living experience, with every detail carefully considered to ensure the utmost convenience and comfort for our residents.



A Grand Lobby for  
a Luxurious Lifestyle.





## Living Area.

At Radiant Square, we understand that a comfortable and luxurious living experience is essential for our residents. Our living areas are designed to provide a sense of space and openness, with ample natural light and stunning views of the surrounding area. Whether you're relaxing with family or entertaining guests, our living areas provide the perfect space to unwind and enjoy life to the fullest. With a focus on high-quality finishes and modern design, Radiant Square offers an unparalleled living experience that is both stylish and functional.





## At Home in Comfort: Relaxing and Spacious Bedrooms by Design.

A bedroom is a personal sanctuary where you can relax, unwind, and recharge. At our properties, we prioritize the comfort and wellbeing of our residents. Each bedroom is designed with spaciousness, natural light, and high-quality materials to ensure a restful and rejuvenating night's sleep. Our range of bedroom configurations caters to individual preferences and needs, with options for studios, one-, two-, or multi-bedroom apartments. Whether you need a peaceful retreat from a busy day or a cozy spot for reading, we provide a comfortable and stylish space that feels like home.

## Luxurious Finishing Brands for Unmatched Comfort.

Radiant Square offers luxurious living spaces with high-end finishes and top-of-the-line appliances. The bathrooms feature elegant tiling and fixtures from Villeroy and Boch, Hansgrohe, and RAK, while the kitchens are equipped with sleek ELBA appliances.

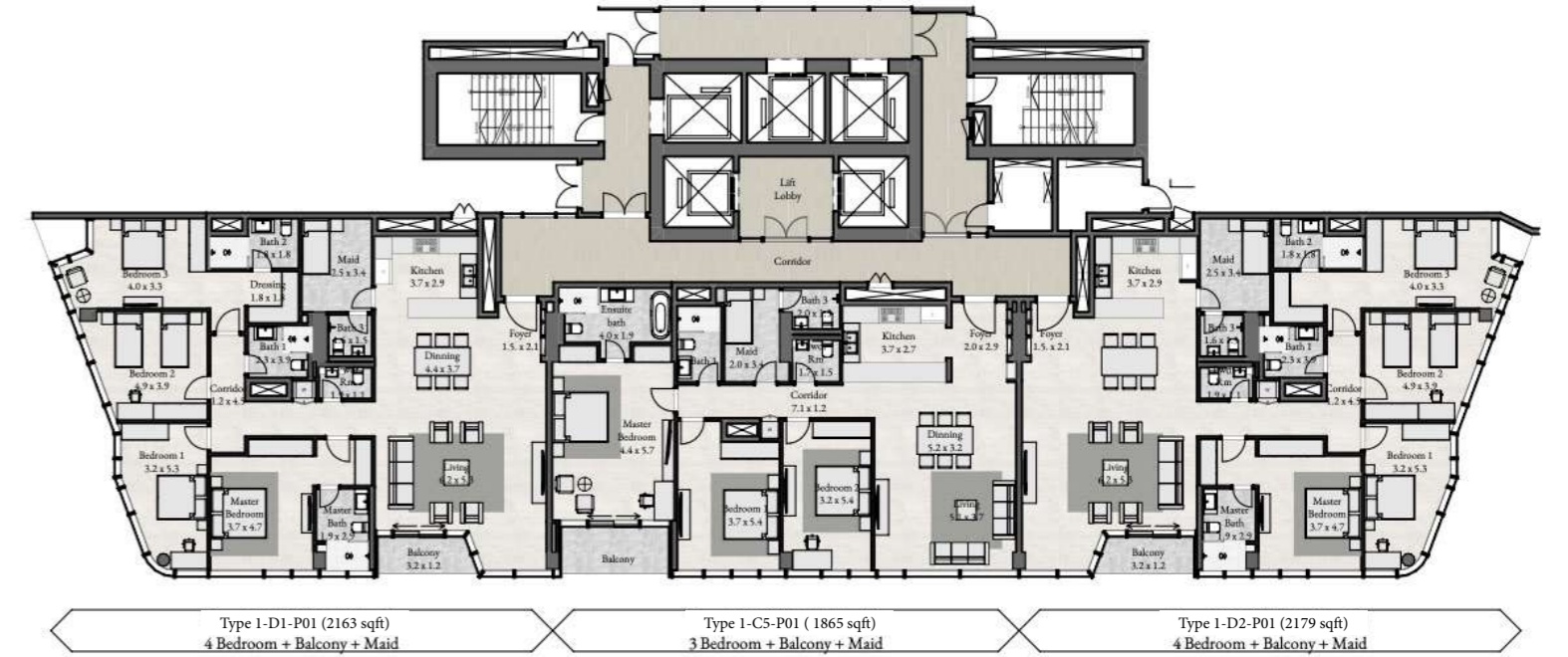
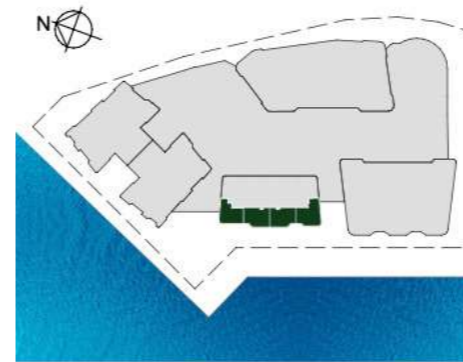
- Villeroy and Boch
- Hansgrohe
- ELBA
- RAK
- MK

We believe that these brands, with their reputation for quality and innovation, help us provide the best possible living experience for our residents.



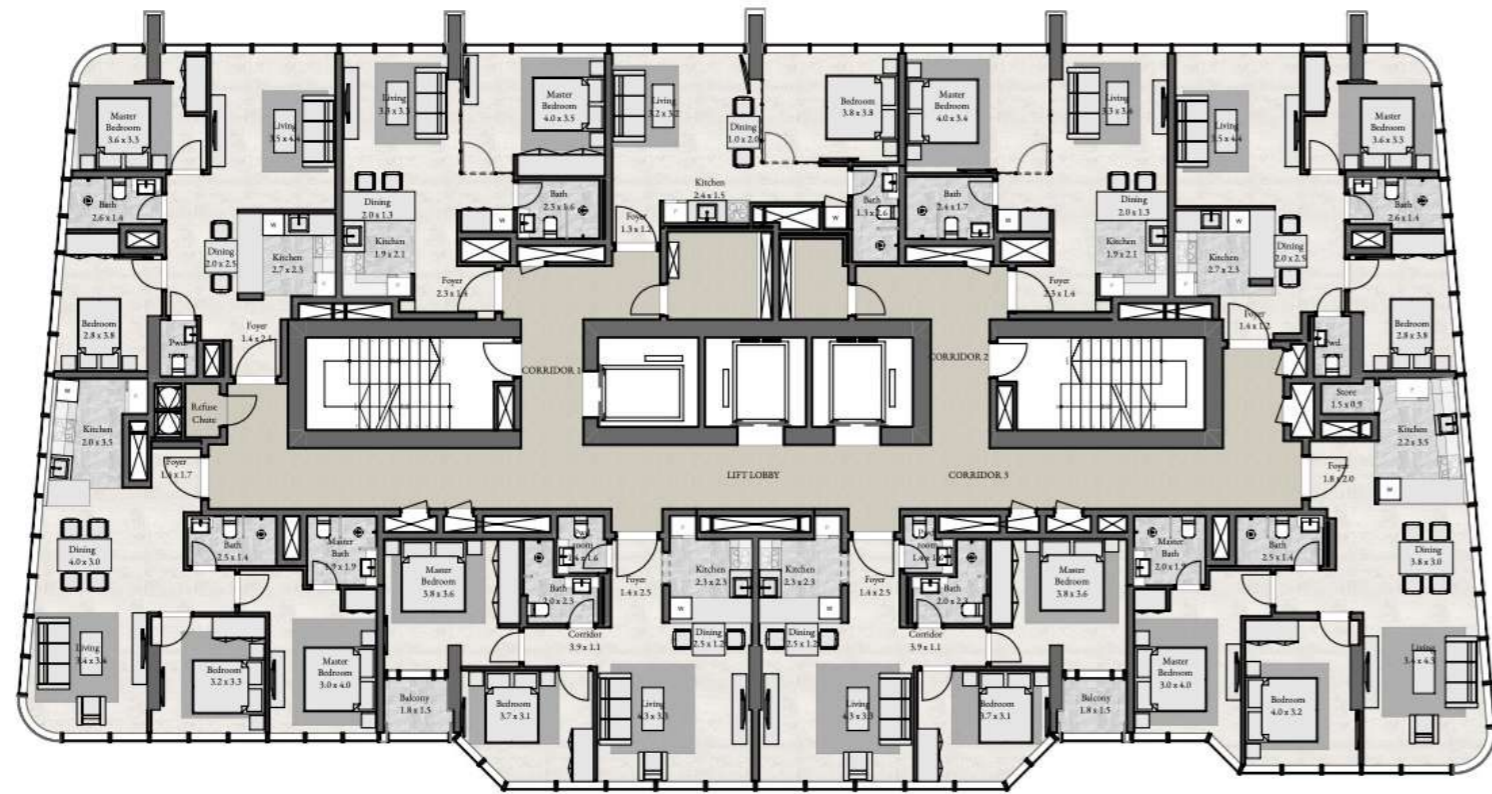
—  
For Ultimate Comfort.

# Overall Floorplans.



TYPICAL P01-P06

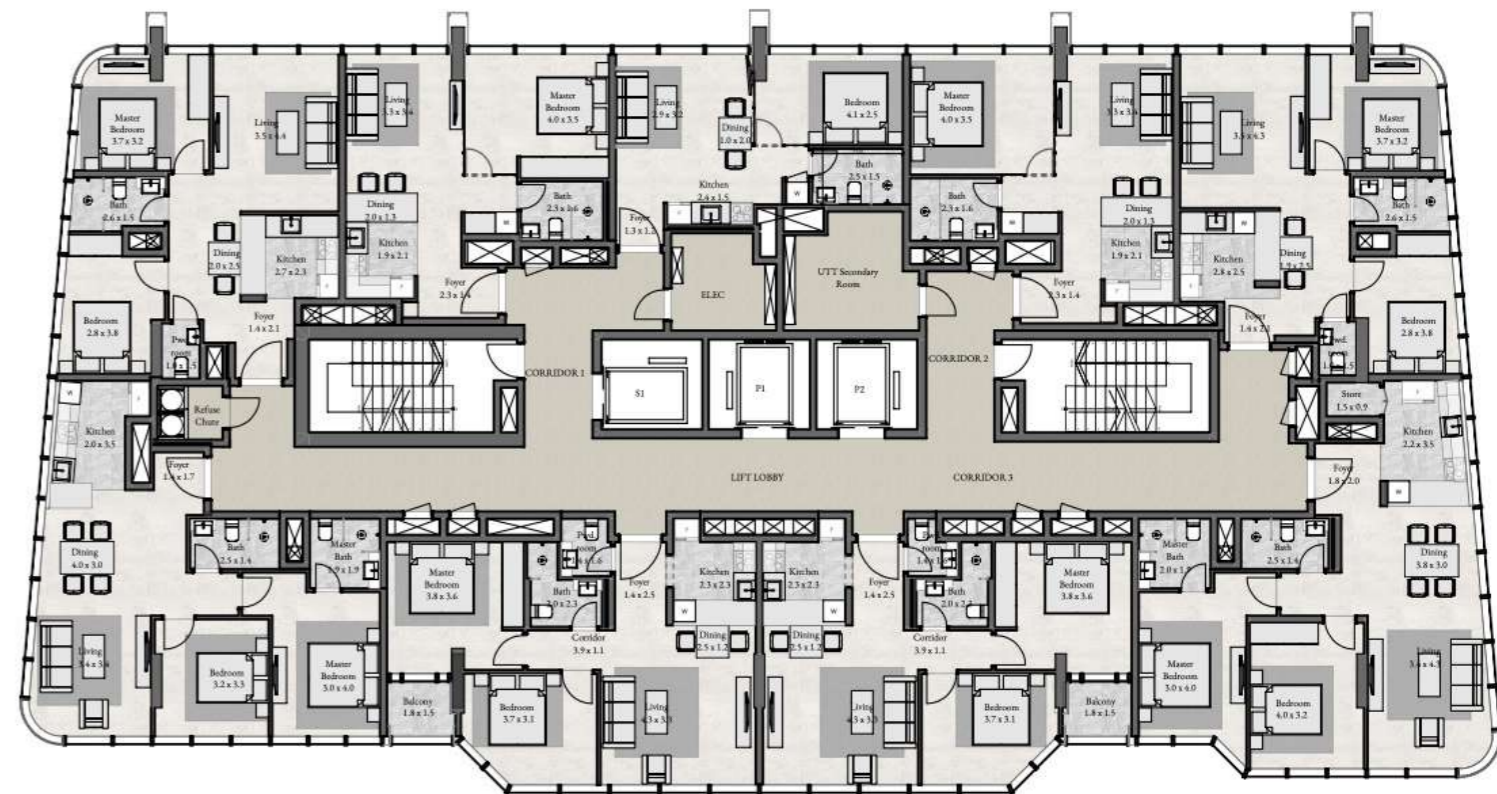
TYPE 3-B7 (767.4 sqft) 2 Bedroom  
 TYPE 3-A5 (584.6 sqft) 1 Bedroom  
 TYPE 3-A4 (492.2 sqft) 1 Bedroom  
 TYPE 3-A3 (584.8 sqft) 1 Bedroom  
 TYPE 3-B12 (745.9 sqft) 2 Bedroom



TYPE 3-B8 (853.6 sqft) 2 Bedroom  
 TYPE 3-B9 (835.3 sqft) 2 Bedroom + Balcony  
 TYPE 3-B10 (835.3 sqft) 2 Bedroom + Balcony  
 TYPE 3-B11 (948.7 sqft) 2 Bedroom

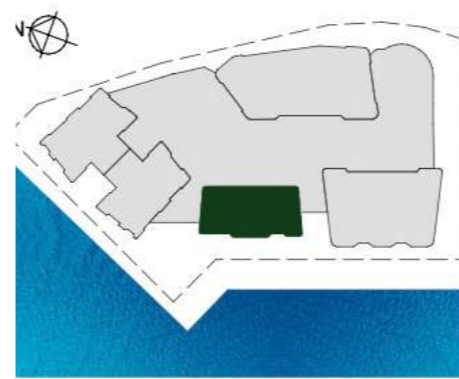
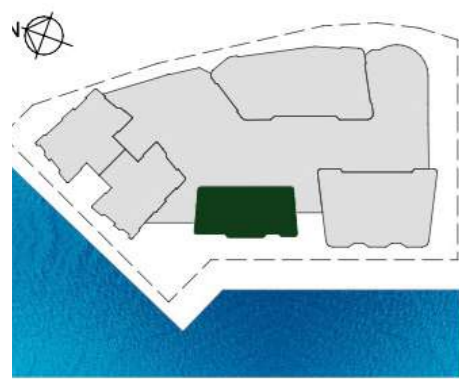
TYPICAL L01-10 & L12-21

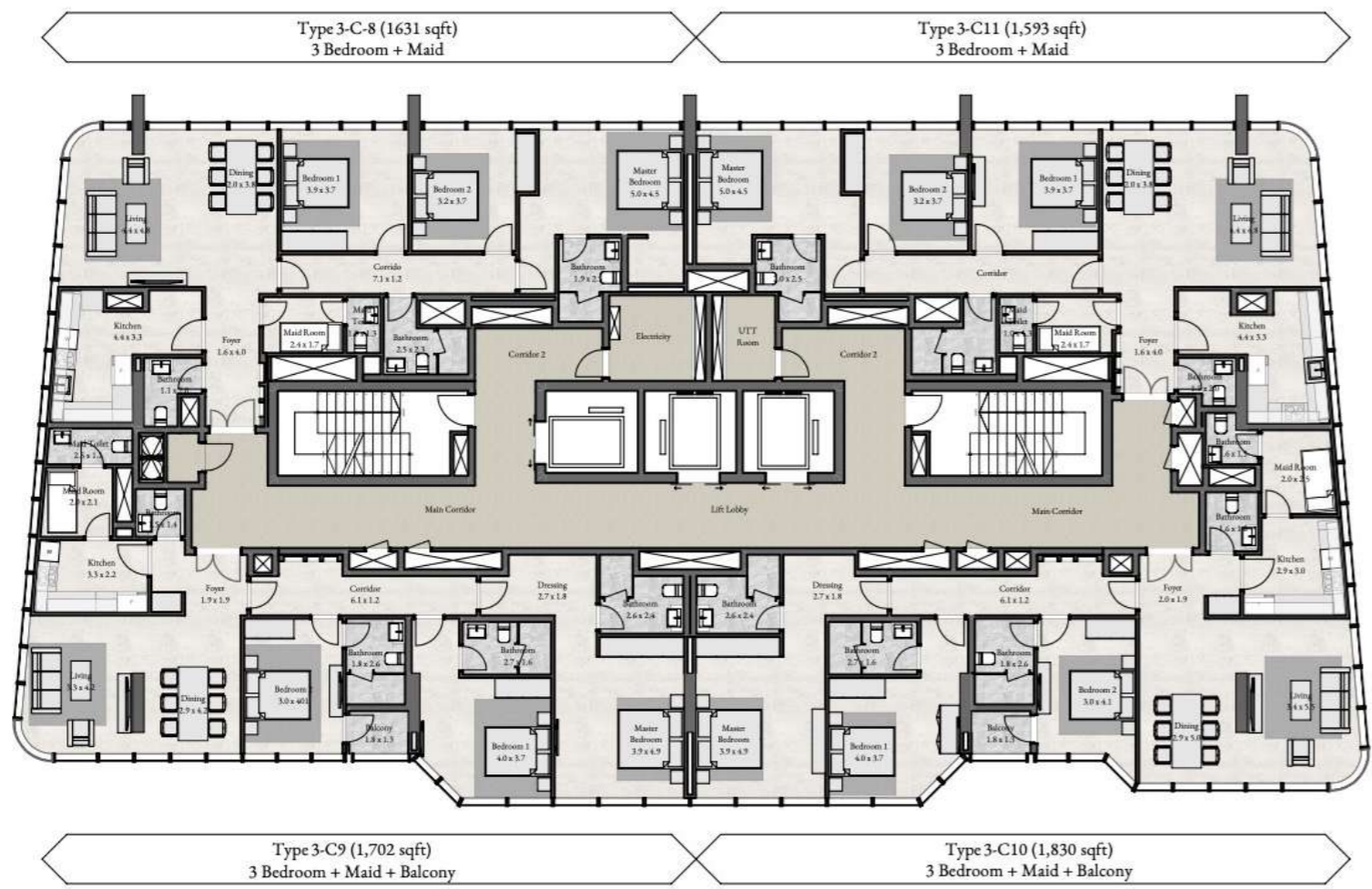
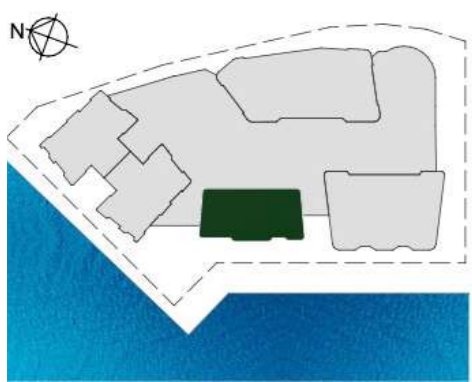
TYPE 3-B7 (767.4 sqft) 2 Bedroom  
 TYPE 3-A5 (584.6 sqft) 1 Bedroom  
 TYPE 3-A7 (457.5 sqft) 1 Bedroom  
 TYPE 3-A6 (599.6 sqft) 1 Bedroom  
 TYPE 3-B12 (745.9 sqft) 2 Bedroom



TYPE 3-B8 (853.6 sqft) 2 Bedroom  
 TYPE 3-B9 (835.3 sqft) 2 Bedroom + Balcony  
 TYPE 3-B10 (835.3 sqft) 2 Bedroom + Balcony  
 TYPE 3-B11 (948.7 sqft) 2 Bedroom

TYPICAL L11





TYPICAL L22

# Apartments Floorplans.

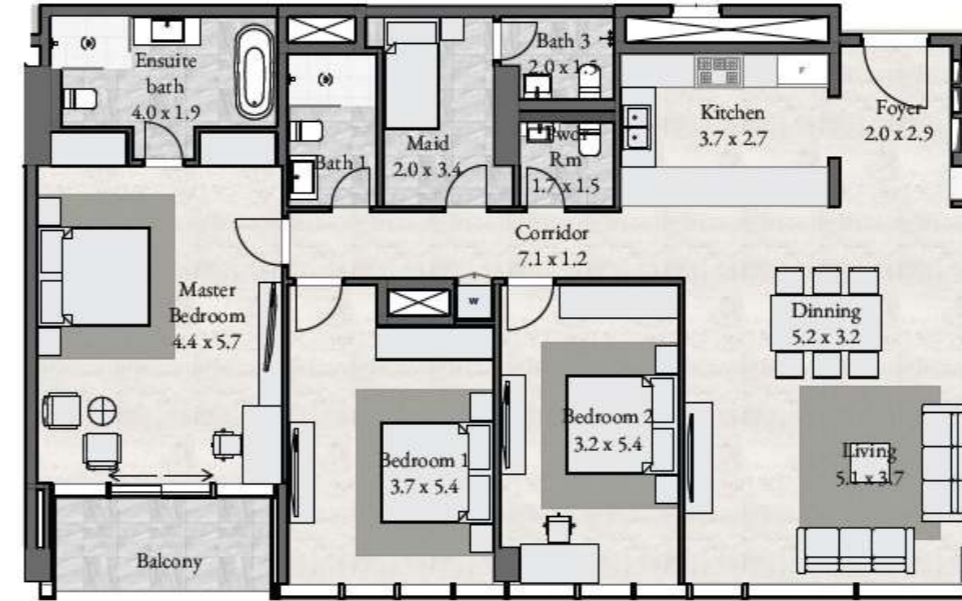
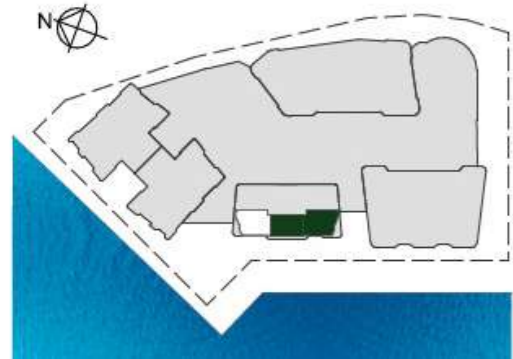
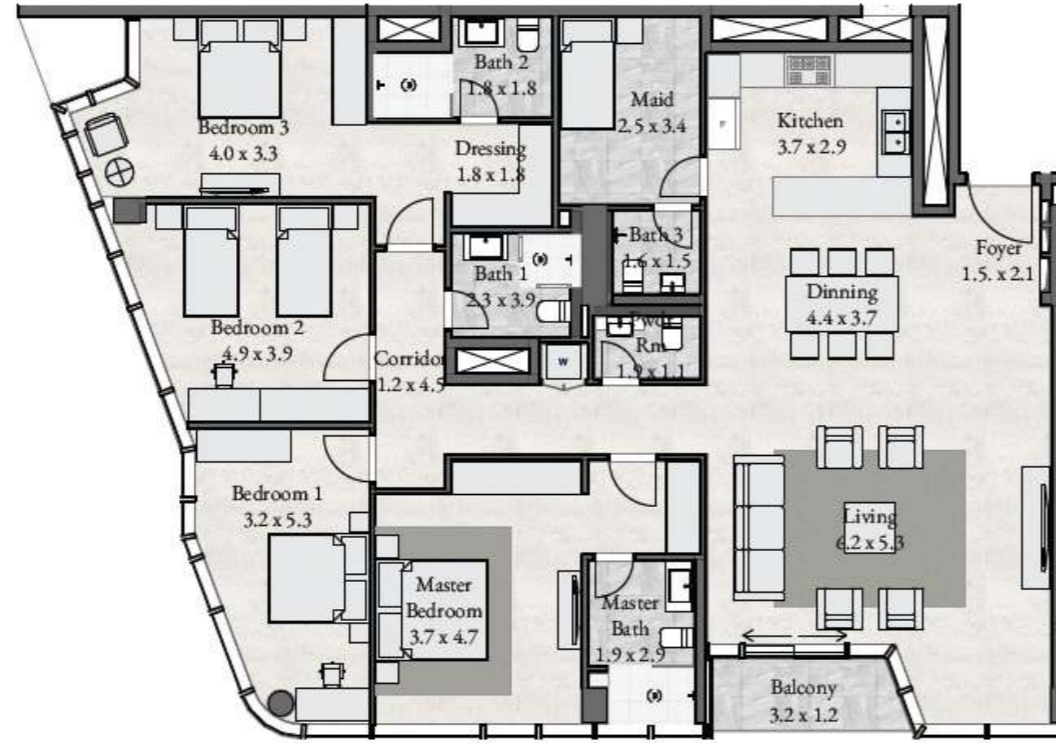
## TYPE RB - PODIUM 01-06

4 BEDROOM + BAL + MA

PODIUM 01-06

UNIT 1- P01-P06

2,163 sqft



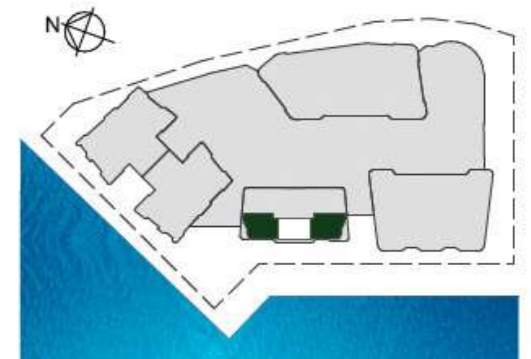
## TYPE RB - PODIUM 01-06

3 BEDROOM + BAL + MA

PODIUM 01-06

UNIT 1- P01-P06

1,865 sqft



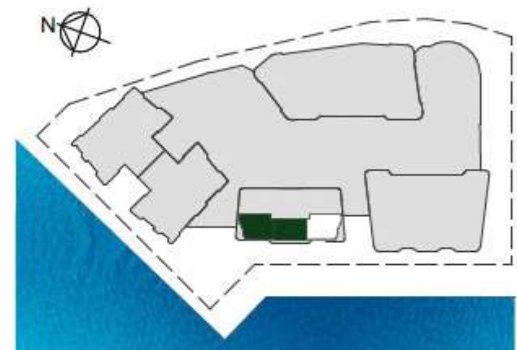
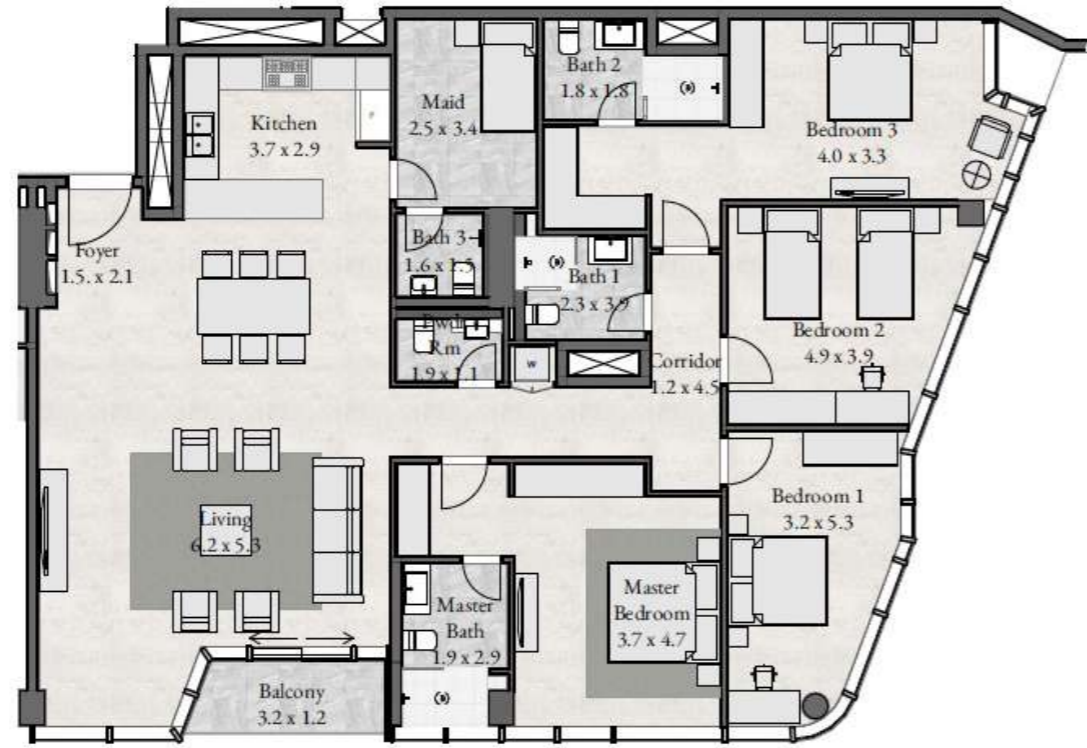
## TYPE RB - PODIUM 01 - 06

4 BEDROOM + BAL + MA

PODIUM 01-06

UNIT 1-P01-P06

2,179 sqft



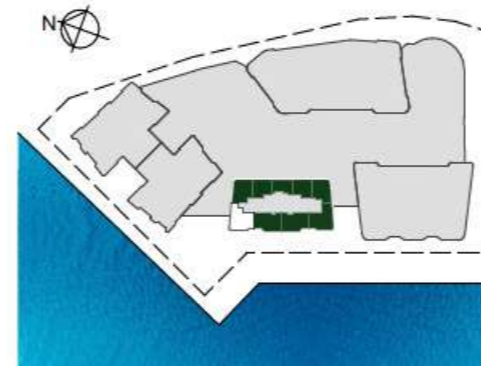
## TYPE RB - LEVEL 01 - 21

2 BEDROOM

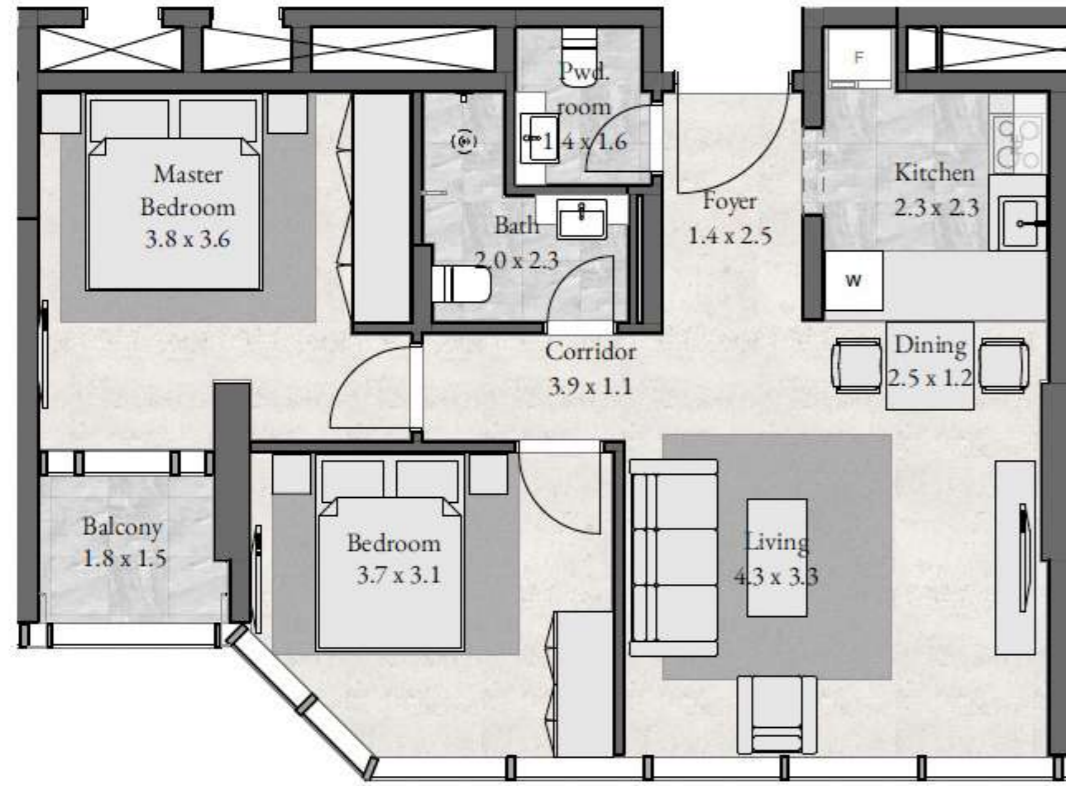
LEVEL 01-21

UNIT 102-2102

844 sqft







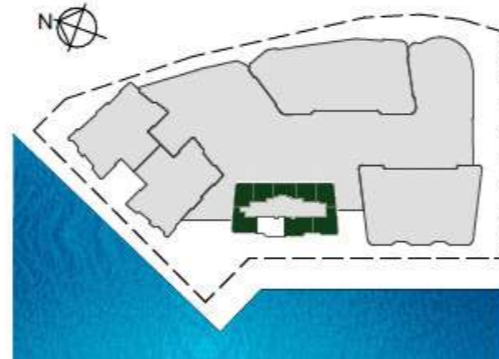
**TYPE RB - LEVEL 01 - 21**

2 BEDROOM + BALCONY

LEVEL 01-21

UNIT 103-2103

808 sqft



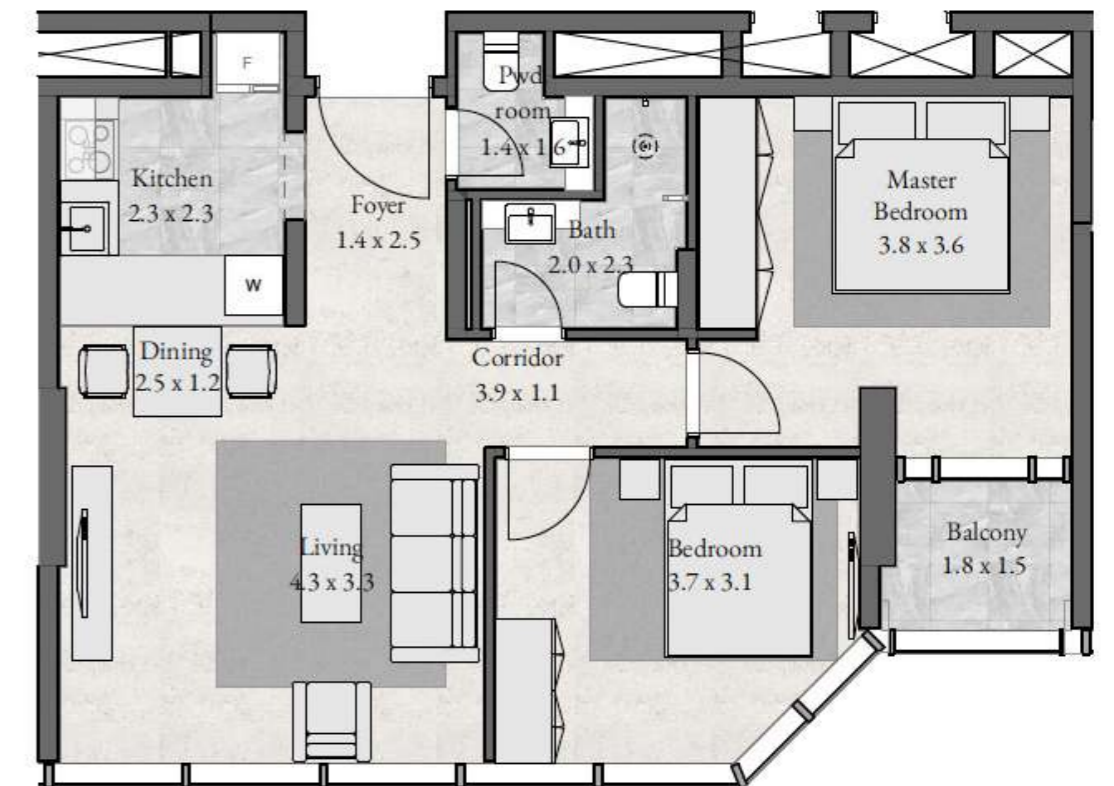
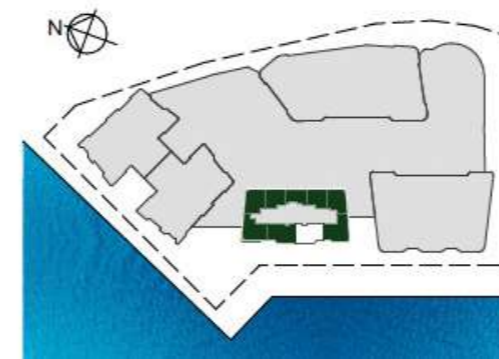
**TYPE RB - LEVEL 01 - 21**

2 BEDROOM + BALCONY

LEVEL 01-21

UNIT 104-2104

805 sqft





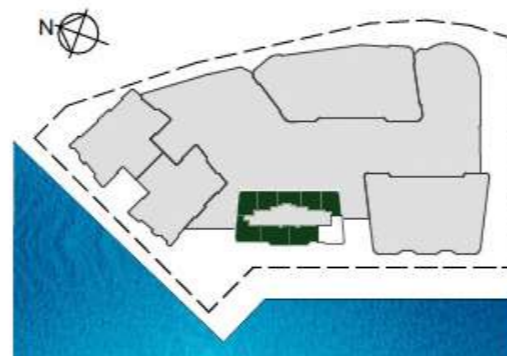
**TYPE RB - LEVEL 01 - 21**

2 BEDROOM + STORE

LEVEL 01-21

UNIT 105-2105

941 sqft



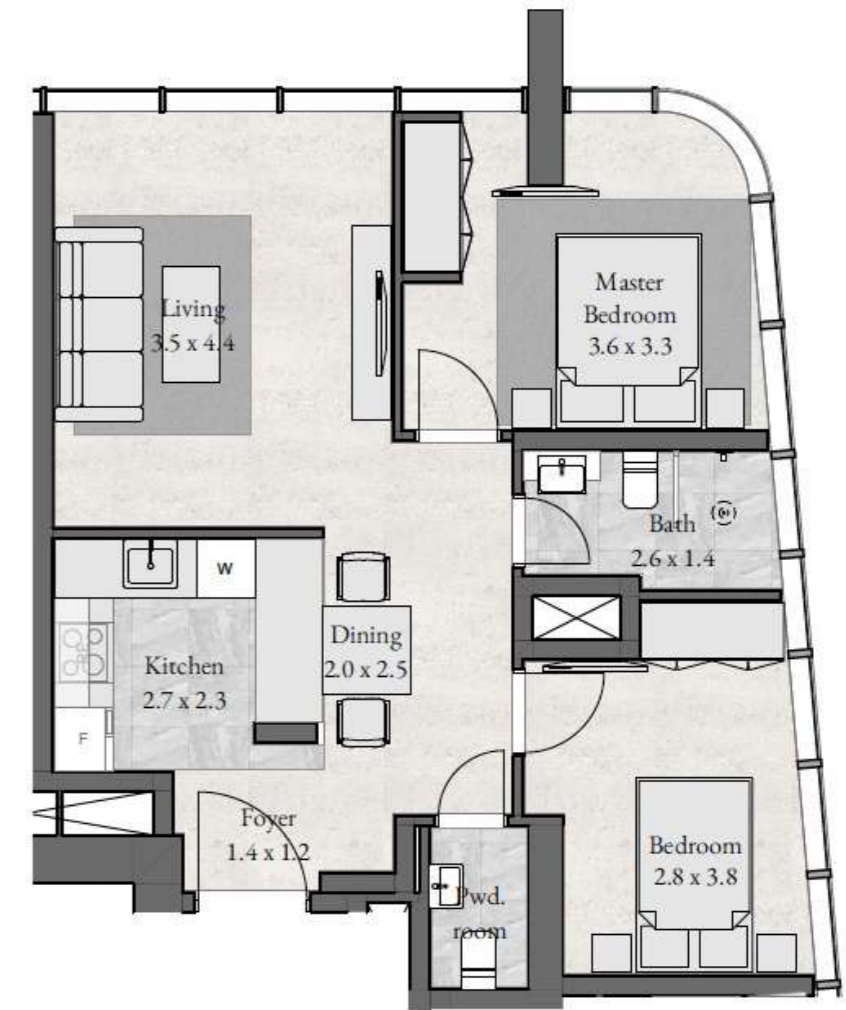
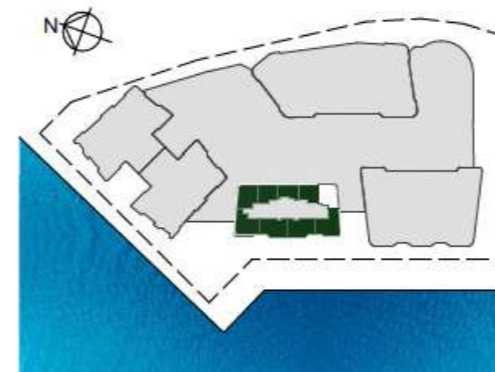
**TYPE RB - LEVEL 01 - 21**

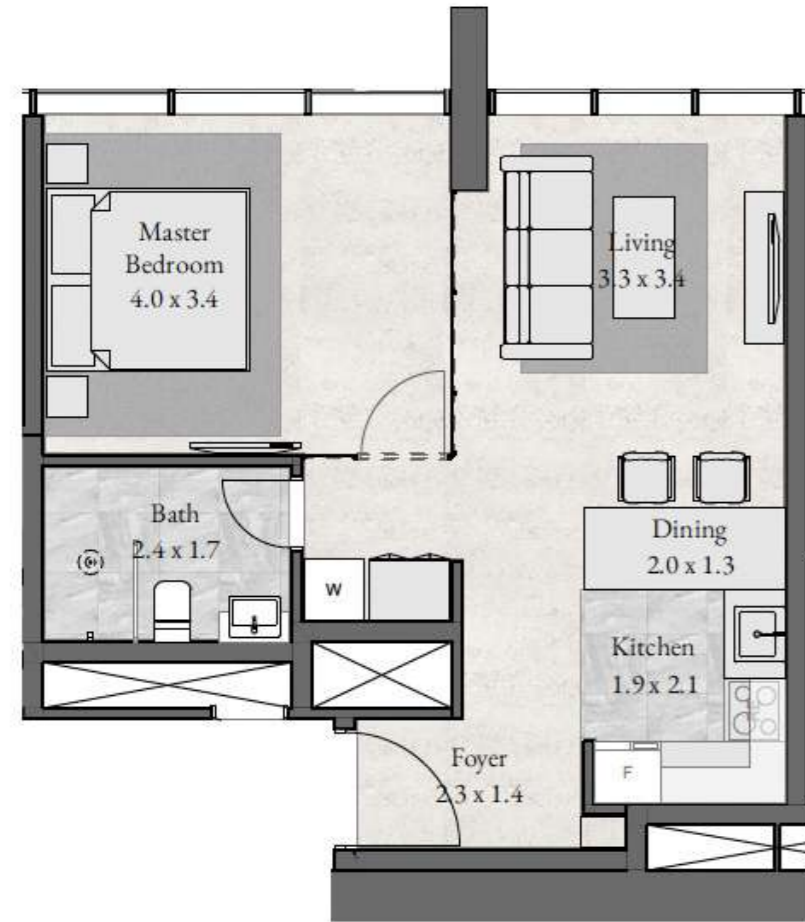
2 BEDROOM

LEVEL 01-21

UNIT 106-2106

728 sqft





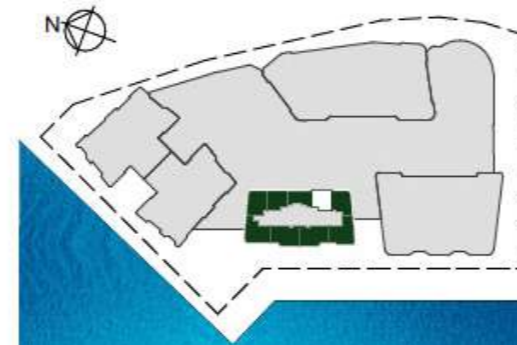
**TYPE RB -  
LEVEL 01 - 10 & 12-21**

1 BEDROOM

LEVEL 01-10 & 12-21

UNIT 107-1007 & 1207-2107

546 sqft



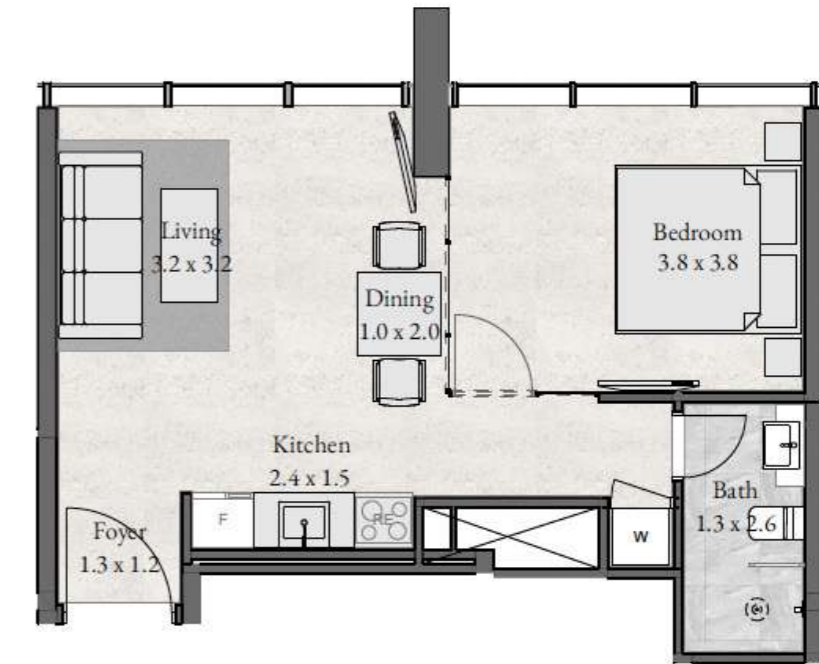
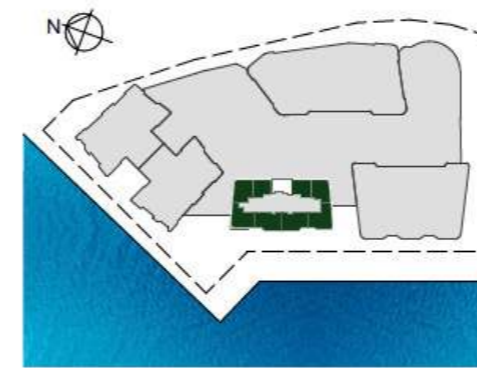
**TYPE RB -  
LEVEL 01 - 10 & 12-21**

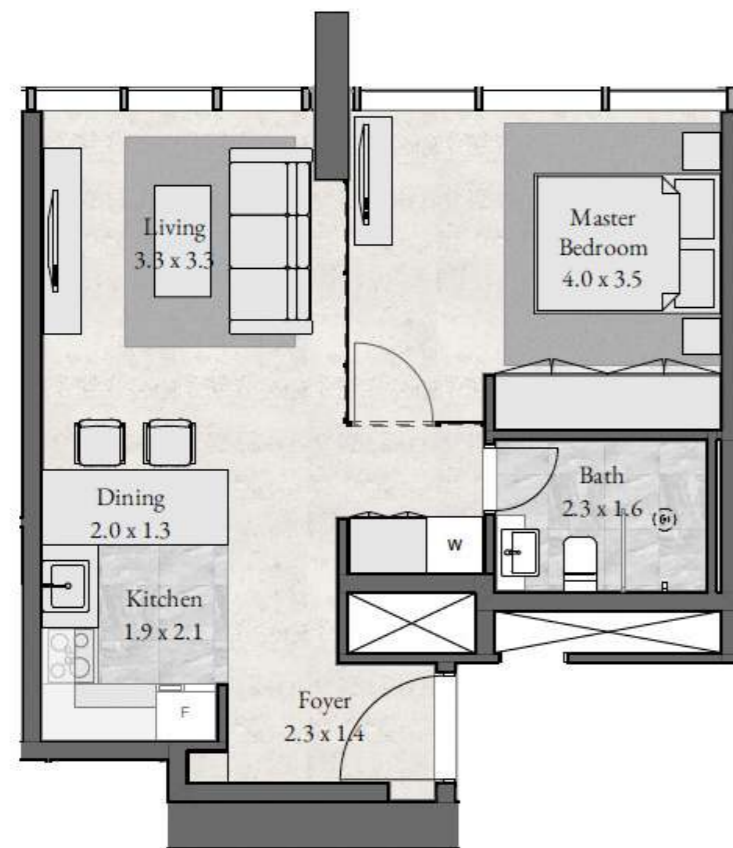
1 BEDROOM

LEVEL 01-10 & 12-21

UNIT 108-1008 & 1208-2108

488 sqft





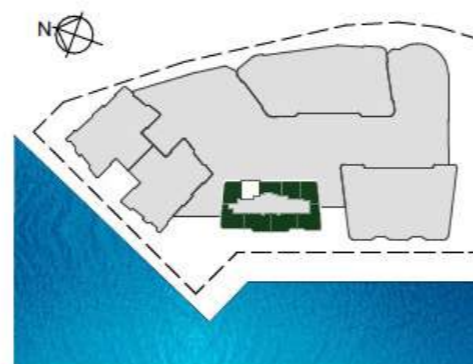
**TYPE RB - LEVEL 01 - 21**

1 BEDROOM

LEVEL 01-21

UNIT 109-2109

546 sqft



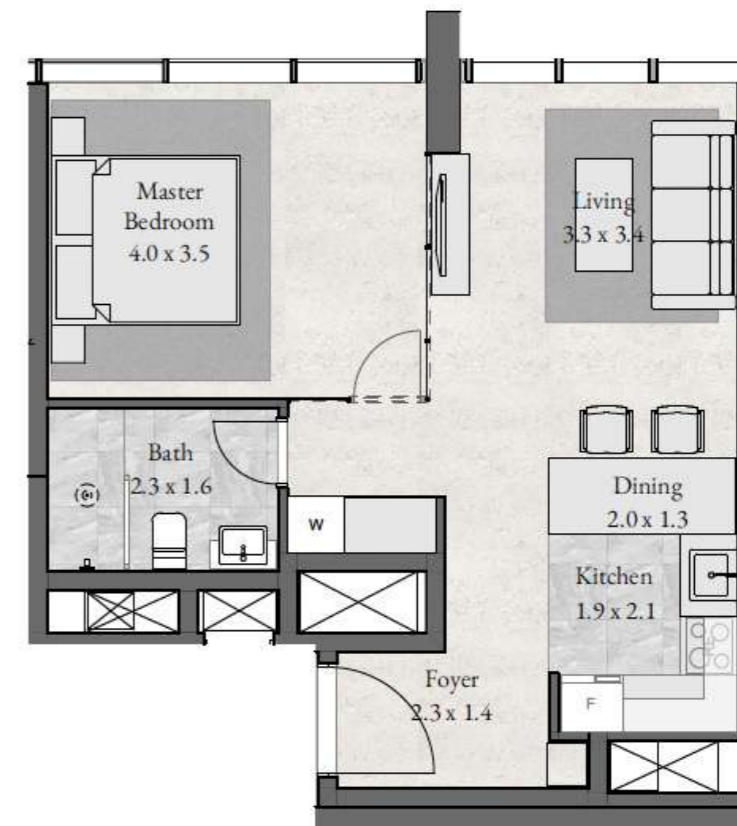
**TYPE RB - LEVEL 11**

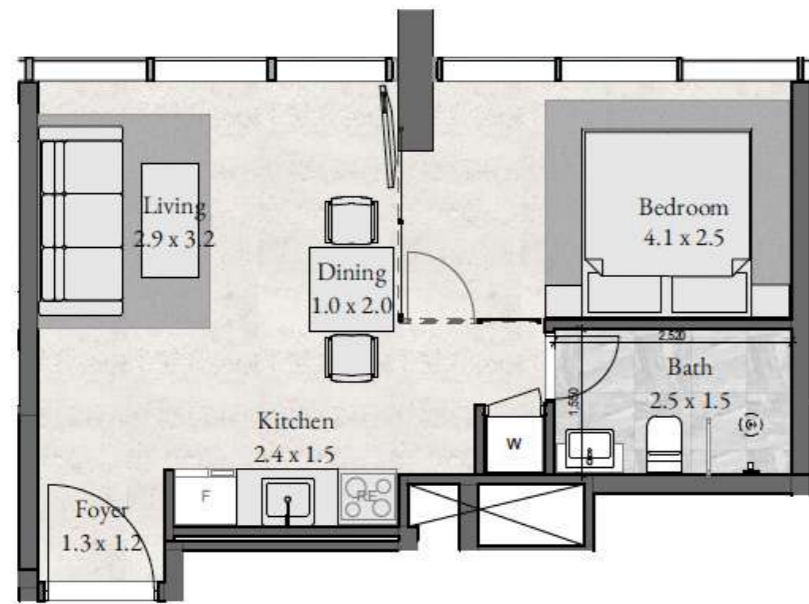
1 BEDROOM

LEVEL 11

UNIT 1107

543 sqft





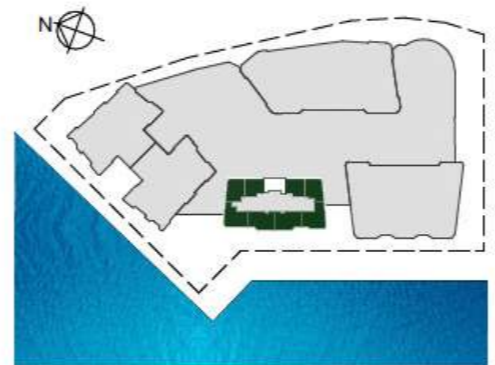
**TYPE RB - LEVEL 11**

1 BEDROOM

LEVEL 11

UNIT 1108

437 sqft



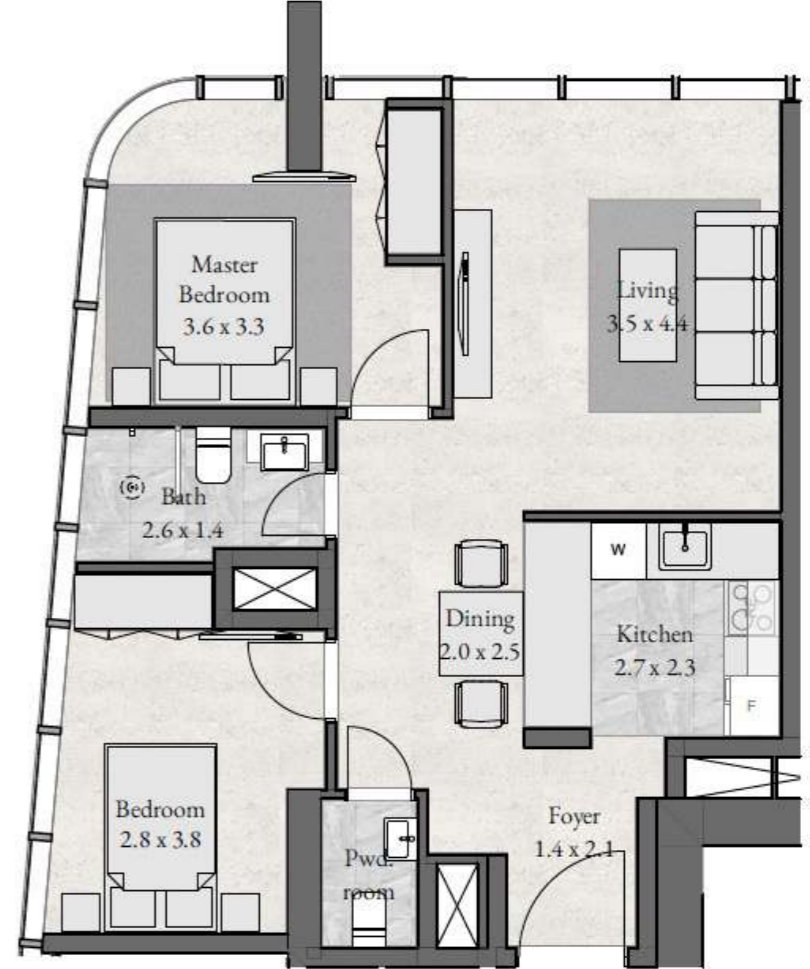
**TYPE RB - LEVEL 01-21**

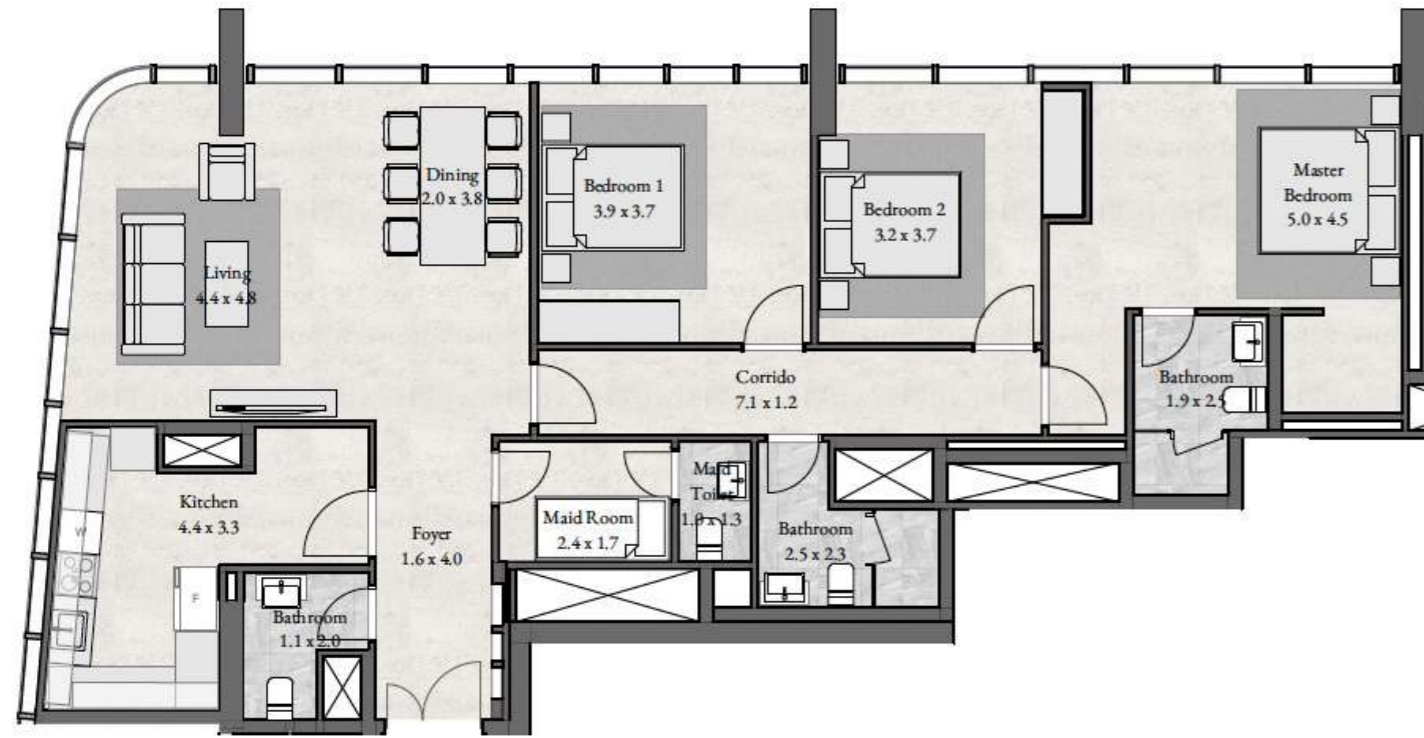
2 BEDROOM

LEVEL 01-21

UNIT 101-2101

754 sqft





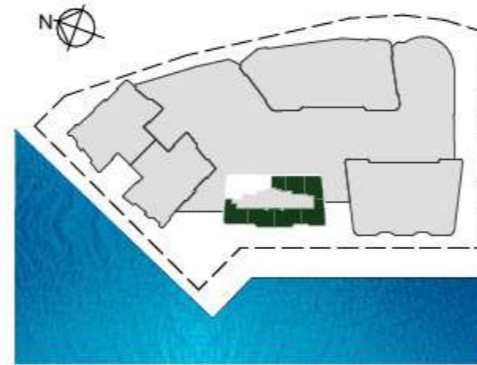
### TYPE RB - LEVEL 22

3 BEDROOM + MAID

LEVEL 22

UNIT 2201

1,554 sqft



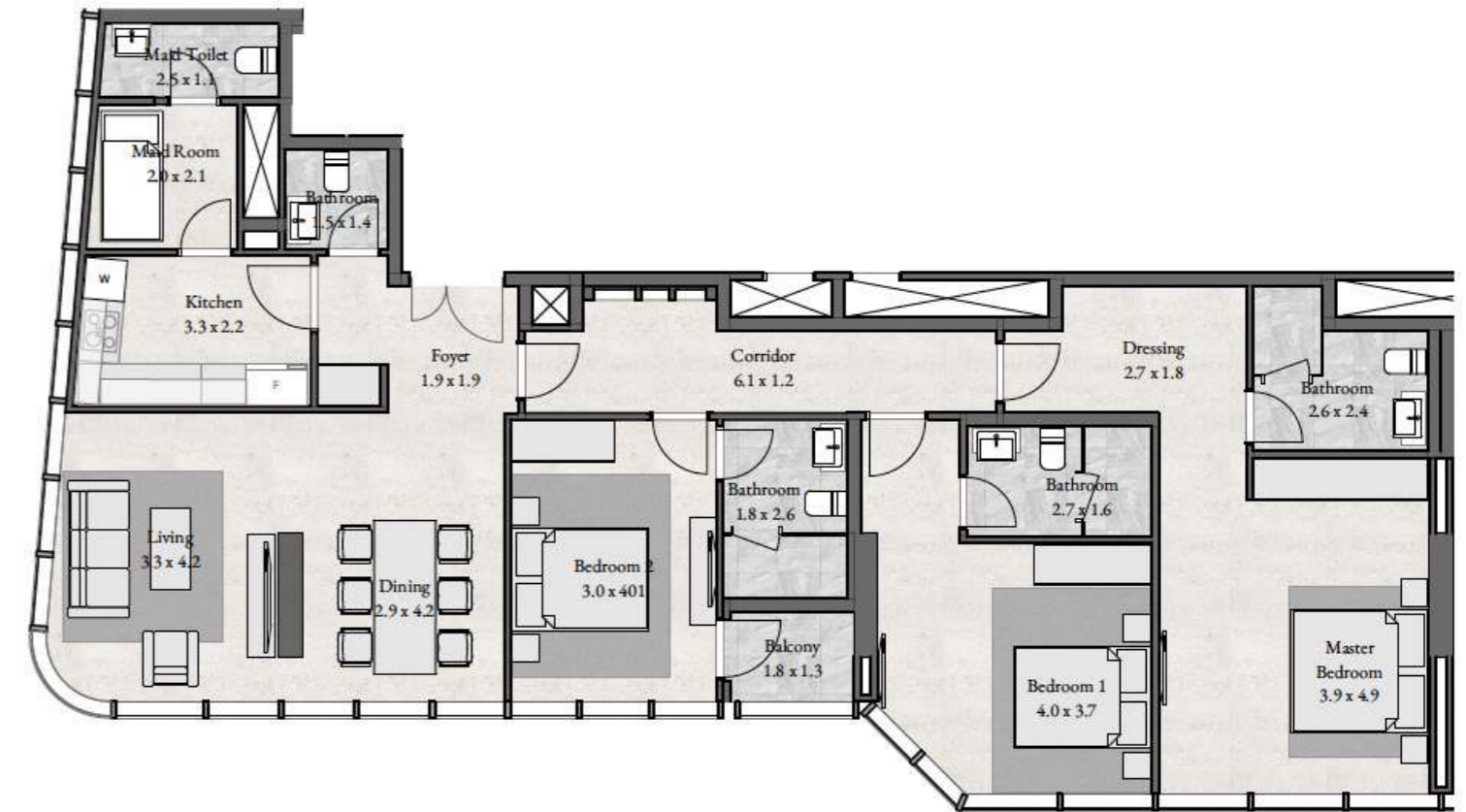
### TYPE RB - LEVEL 22

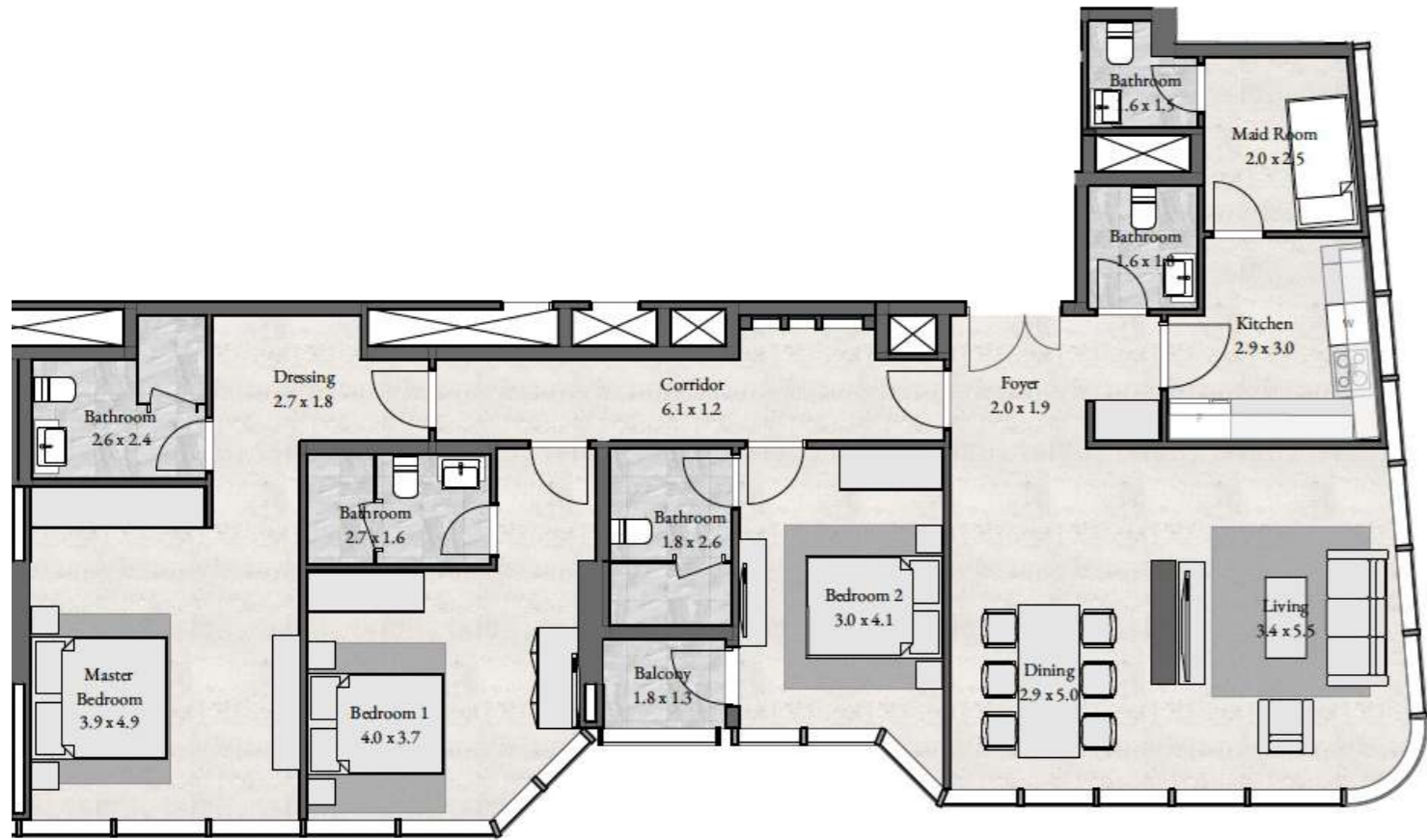
3 BEDROOM + MA + BAL

LEVEL 22

UNIT 2202

1,659 sqft





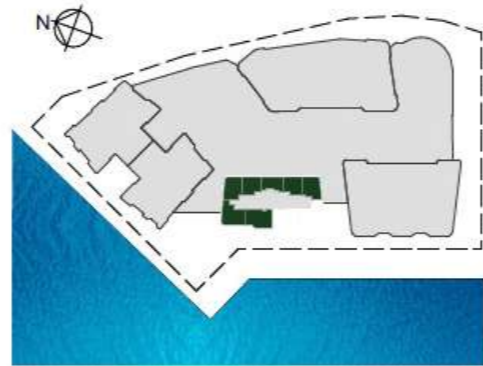
### TYPE RB - LEVEL 22

3 BEDROOM + MA + BAL

LEVEL 22

UNIT 2203

1,754 sqft



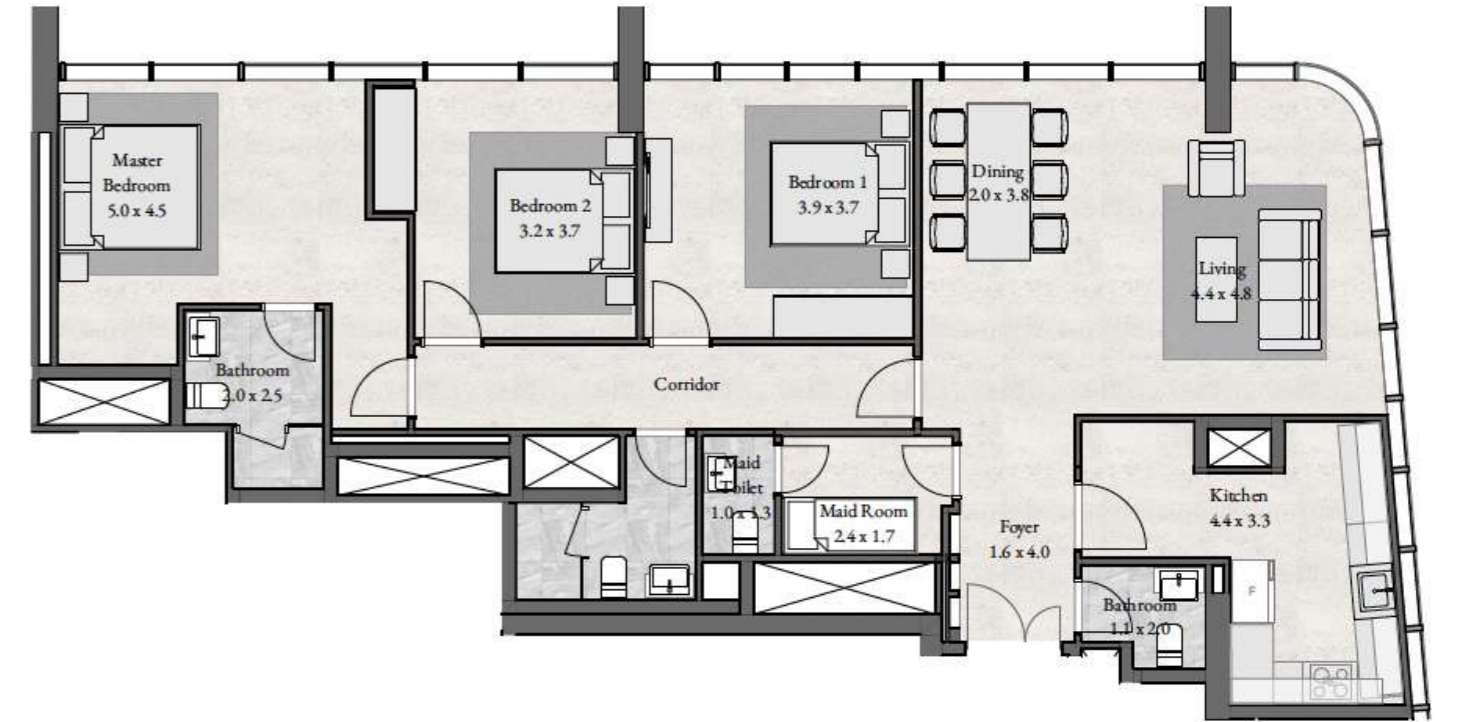
### TYPE RB - LEVEL 22

3 BEDROOM + MAID

LEVEL 22

UNIT 2204

1,519 sqft





---

Sahel Towers, Tower B, M Floor, Abu Dhabi, UAE  
+971 2 666 4431  
[elitecare@radiantrealstate.ae](mailto:elitecare@radiantrealstate.ae)  
[www.radiantrealstate.ae](http://www.radiantrealstate.ae)