



THE
SOURCE

LIVE WELL WITH ALDAR

As one of the most trusted and recognised real estate lifestyle developers in the UAE, it's our duty to nurture wellbeing in every Abu Dhabi home. Which is why we do more than build properties.

We strive to shape communities that enrich people's lives, in homes that brim with health, happiness, and everything they love.



AED 11.2 BN
REVENUE

AED 3.1 BN
NET PROFIT

AED 7 BN
ALDAR
DEVELOPMENT
REVENUE

AED 4.1 BN
ALDAR
INVESTMENT
REVENUE

AED 14.4 BN
DEVELOPMENT
SALES

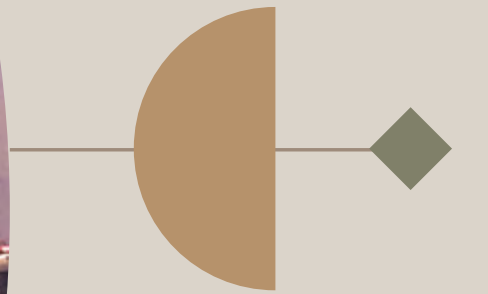
AED 11.3 BN
13 COMPLETED
ACQUISITIONS

AED 5.1 BN
APOLLO
TRANSACTION

AED 32 BN
ASSETS UNDER
MANAGEMENT

THIS IS ABU DHABI

With its tranquil coastline, vibrant cultural scene, inspiring heritage and dynamic business landscape, Abu Dhabi is a city of balance. A place that offers people from all over the world a well-rounded lifestyle and the chance to achieve complete wellbeing.



SAADIYAT ISLAND LIVING

Wellbeing begins here, on a natural island complete with turquoise waters, white-sand beaches and enriching experiences on every corner. For those looking for another kind of enlightenment, the inspiring Cultural District is home to Zayed National Museum, Guggenheim Abu Dhabi, Louvre Abu Dhabi and Saadiyat Grove. A lifestyle destination that is redefining the UAE's role in global culture and holistic health.





A GROVE LIKE NO OTHER

Open your mind to inspiration at Saadiyat Grove. An ever-evolving, ever-invigorating destination at the heart of the island that makes pedigreed art and culture a part of life. Interactive artworks surround you, exquisite style is reflected through every window, and the world's most iconic collection of museums and galleries are yours to explore.



ZAYED NATIONAL MUSEUM

The magnificent centrepiece of the Cultural District celebrates the life of our founding father and tells the story of the UAE. A precious link between ancient past and modern day.





GUGGENHEIM ABU DHABI

The first museum of its kind in the region, with a vision to spark interest in contemporary art, and provide a powerful new creative platform for artists around the world.



LOUVRE ABU DHABI

An architectural masterpiece and international icon,
where treasures from near and far, past, present and
future, are admired together under a rain of light.



THE ABRAHAMIC FAMILY HOUSE

The first-ever interfaith community in the UAE, where three religious spaces are connected, to encourage acceptance between Christianity, Islam and Judaism.





NATURAL HISTORY MUSEUM ABU DHABI

This is where the history of life on Earth is told through unique collections and exhibitions, while scientists tackle some of the biggest challenges facing the world today.



SOUL BEACH, MAMSHA AL SAADIYAT

A new private beach facility on Abu Dhabi's stunning Saadiyat island. Soul beach is a 1km stretch of prime Saadiyat coastline, travel brochure views, and mesmerising blues.





↑
Zaya Nurai Island
15 Min boat ride

THE
source

GUGGENHEIM
ABU DHABI

SAADIYAT
GROVE

LOUVRE ABU DHABI

SHEIKH ZAYED
NATIONAL
MUSEUM

CULTURAL
DISTRICT

MAMSHA AL SAADIYAT

THE ST. REGIS SAADIYAT ISLAND RESORT

JAWAHER SAADIYAT

MANARAT AL SAADIYAT

SAADIYAT ISLAND

MARINA
DISTRICT

NYU ABU DHABI

SAADIYAT
BEACH CLUB

SAADIYAT PUBLIC BEACH
SAADIYAT BEACH GOLF CLUB

ABU DHABI

SARAYA

BURJ
MOHAMMED
BIN RASHID

WORLD
TRADE CENTER

KHALIDIYA
VILLAGE

BANIYAS
TOWERS

**AL MARYAH
ISLAND**

15 Min

THE BRIDGES

REEM CENTRAL PARK

MEERA

THE GATE &
ARC TOWERS

REEM ISLAND

15 Min

AL MAMOURA

→
Yas Island
15 Min

Abu Dhabi Airport
20 Min

Dubai
70 Min

←
Corniche Rd, Abu Dhabi
20 Min

EMIRATES PALACE
AL BATEEN PARK



THE NEW HOME OF WELLNESS

Our goal is to enrich the lives of people in Abu Dhabi in as many ways as we can. Which is why we've made a new commitment to wellbeing; introducing a series of developments with amenities and services that embody wellness holistically. Because wellness isn't something you do; it's something you live.



CONNECT WITH SERENITY
AND SPLENDOUR



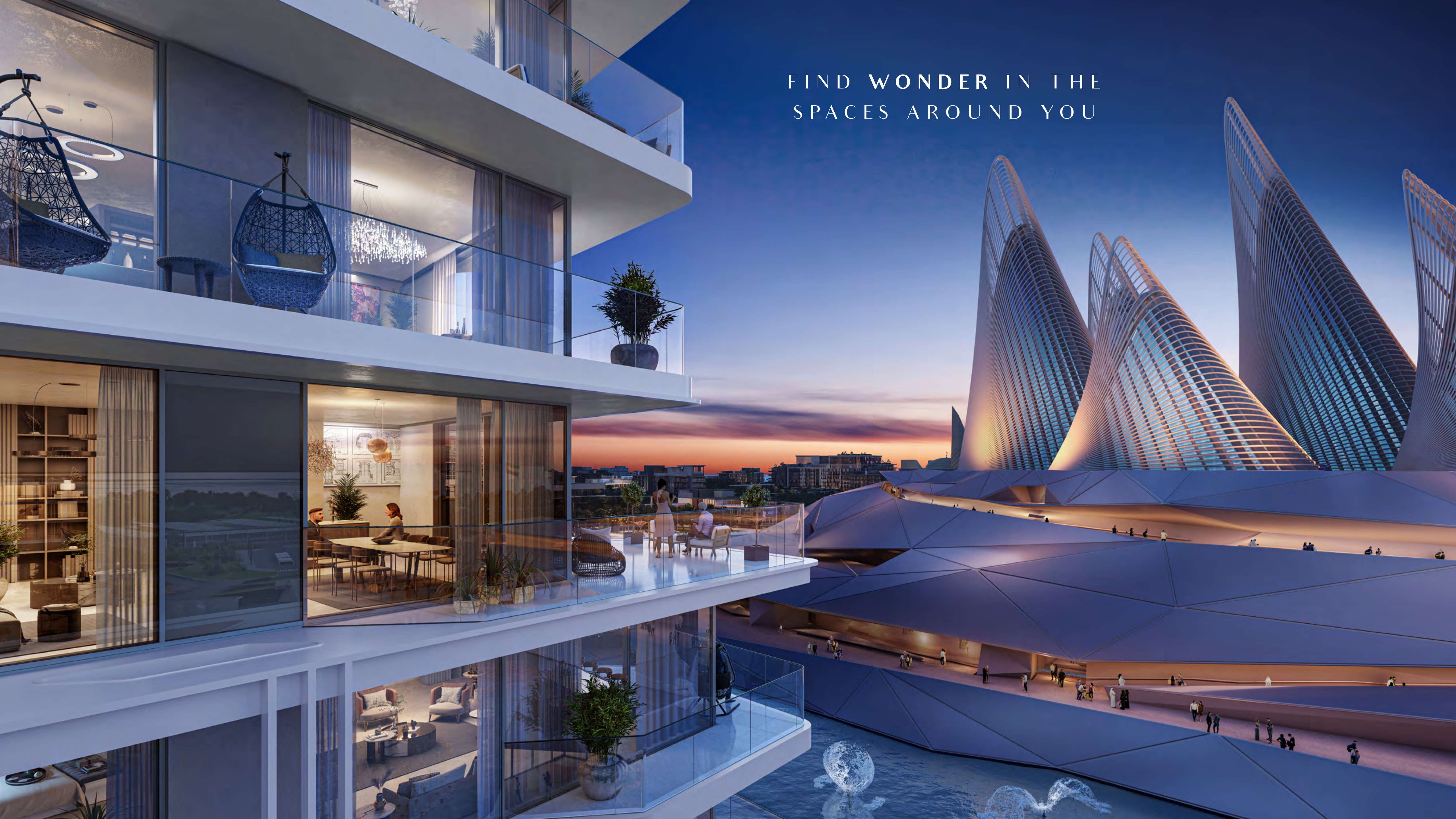
THE source

ALL IS WELL

Imagine yourself in a place where all is well. Now, make that feeling a reality at The Source. A new community at the heart of Abu Dhabi's Cultural District, tailored to offer holistic wellness. Cocooned in nature, connected to culture and brimming with virality; here you'll rediscover your whole self.



FIND WONDER IN THE
SPACES AROUND YOU

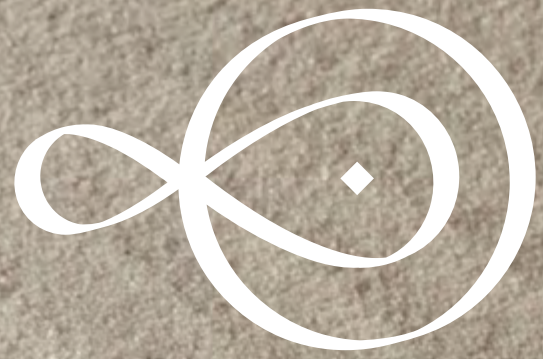


A WORLD BRIMMING
WITH VITALITY



FIND YOUR BALANCE

MIND



Take time and space to refocus your thoughts

BODY



Feel inspired to move and nourish your body

GROWTH



Feed your pursuits, passions and creativity

COMMUNITY



Connect with people who practice living well

MEDITATION ZEN GARDEN

Let go of distractions in the quiet of the
rooftop zen garden.

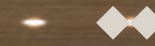


MIND

FOCUS

YOGA STUDIO

Channel your mental and physical energy on the mat.





STRENGTH

FITNESS HUB

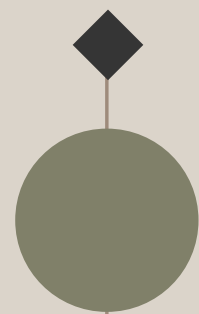
Reach your personal goals in an environment designed to push you.





EXERCISE SQUASH COURT

Elevate your heartrate and your
overall health on the court.



RELAXATION THERMAL SUITE

Restore, revitalise and detoxify
in the sauna and steam rooms.



INSPIRATION

THINKING SPACE

Get inspired in our co-working and exhibition space, where work and art flow seamlessly.



GROWTH



IMAGINATION PLAYROOM

Let little minds expand in a space that
encourages independence.



GROWTH

EXPLORATION COURTYARD

Open your mind to the endless possibilities waiting just outside.



COMMUNITY

CONNECTION

LOBBY LOUNGE

Be part of a vibrant community,
where wellness is a state of being.



COMMUNITY



SMART & SUSTAINABLE

Designed responsibly, built from locally sourced materials and fitted with the latest sustainable features, your home will allow you to make a positive impact on the environment.

2 PEARL ESTIDAMA RATING



REDUCED CARBON EMISSIONS



GREEN BUILDING TECHNOLOGY



SUSTAINABLE MATERIALS



LOCALLY SOURCED MATERIALS



LOW-FLOW FIXTURES



TARGETTING WELL CERTIFICATION



EVERY INCH
DESIGNED WITH YOUR
WELLBEING IN MIND



AMENITIES
DESIGNED FOR
HOLISTIC
HEALTH &
WELLBEING





AMENITIES

ROOFTOP ZEN GARDEN

YOGA SPACE

PANORAMIC PODIUM OVERLOOKING
ZAYED NATIONAL MUSEUM

WELLNESS CONCIERGE

SQUASH COURTS

THERMAL SUITE WITH SAUNA & STEAM ROOM

YOGA & MEDITATION ROOM

GYMS

PANORAMIC POOL

CO-WORKING LOUNGE

MULTI-FUNCTIONAL SPACE

KIDS PLAY AREAS

CYCLING RACKS

ACCESS TO CULTURAL DISTRICT



EMBRACE THE ELEMENTS

Feel grounded in a biophilia-inspired apartment that overlooks Saadiyat Grove's dancing fountains, just a short walk from the island's calming white-sand, clear water beaches.

ACHIEVE HARMONY IN THE HOME

Apartments at The Source have been meticulously planned to enhance everyday life. With a choice of two colour schemes, as well as state-of-the-art features and exquisite finishings, your surroundings will never fail to lift your mood.

VIEWS OF ZAYED NATIONAL MUSEUM
AND THE DANCING FOUNTAINS

◆
AMBIENT LIGHTING

◆
BEDROOMS DESIGNED FOR
THE PERFECT NIGHT'S SLEEP

◆
BUILT-IN WHITE GOODS





FINISHES LIGHT SCHEME


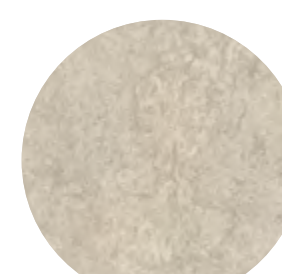


THROUGHOUT THE APARTMENT

-  EMULSION PAINT
-  TRAVERTINE PORCELAIN SLAB LIGHT BEIG
-  MIRAGE-ELYSIAN
-  LAMINATE-WHITE TOSSINI ELM
-  LAMINATE TAUPE GREY
-  RIBBED WOOD PANEL LIGHT BEIGE

KITCHEN

-  EMULSION PAINT
-  TRAVERTINE PORCELAIN SLAB LIGHT BEIG
-  LAMINATE TAUPE GREY

BATHROOM

-  EMULSION PAINT
-  MIRAGE-ELYSIAN
-  TRAVERTINE PORCELAIN SLAB LIGHT BEIG
-  RIBBED WOOD PANEL LIGHT BEIGE

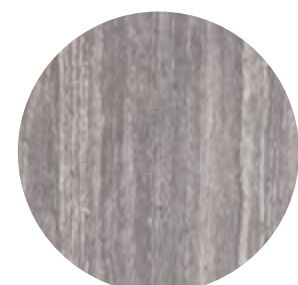
FINISHES

DARK SCHEME

THROUGHOUT THE APARTMENT



EMULSION
PAINT



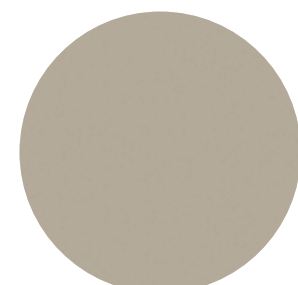
TRAVERTNO GREY
MATT FINISH



MIRAGE-
GLOCAL



LAMINATE-
GREY VICENZ



LAMINATE
PEBBL GREY

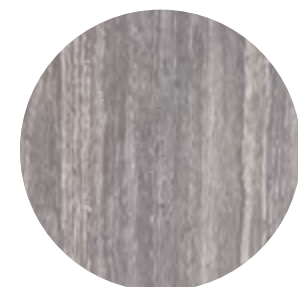


RIBBED WOOD
PANEL

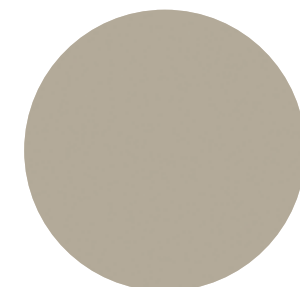
KITCHEN



EMULSION
PAINT



TRAVERTNO GREY
MATT FINISH



LAMINATE
PEBBL GREY

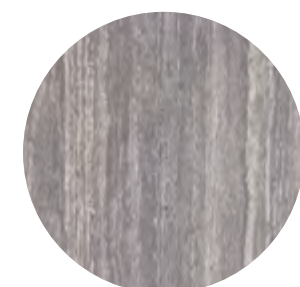
BATHROOM



EMULSION
PAINT



MIRAGE-
GLOCAL



TRAVERTNO GREY
MATT FINISH



RIBBED WOOD
PANEL



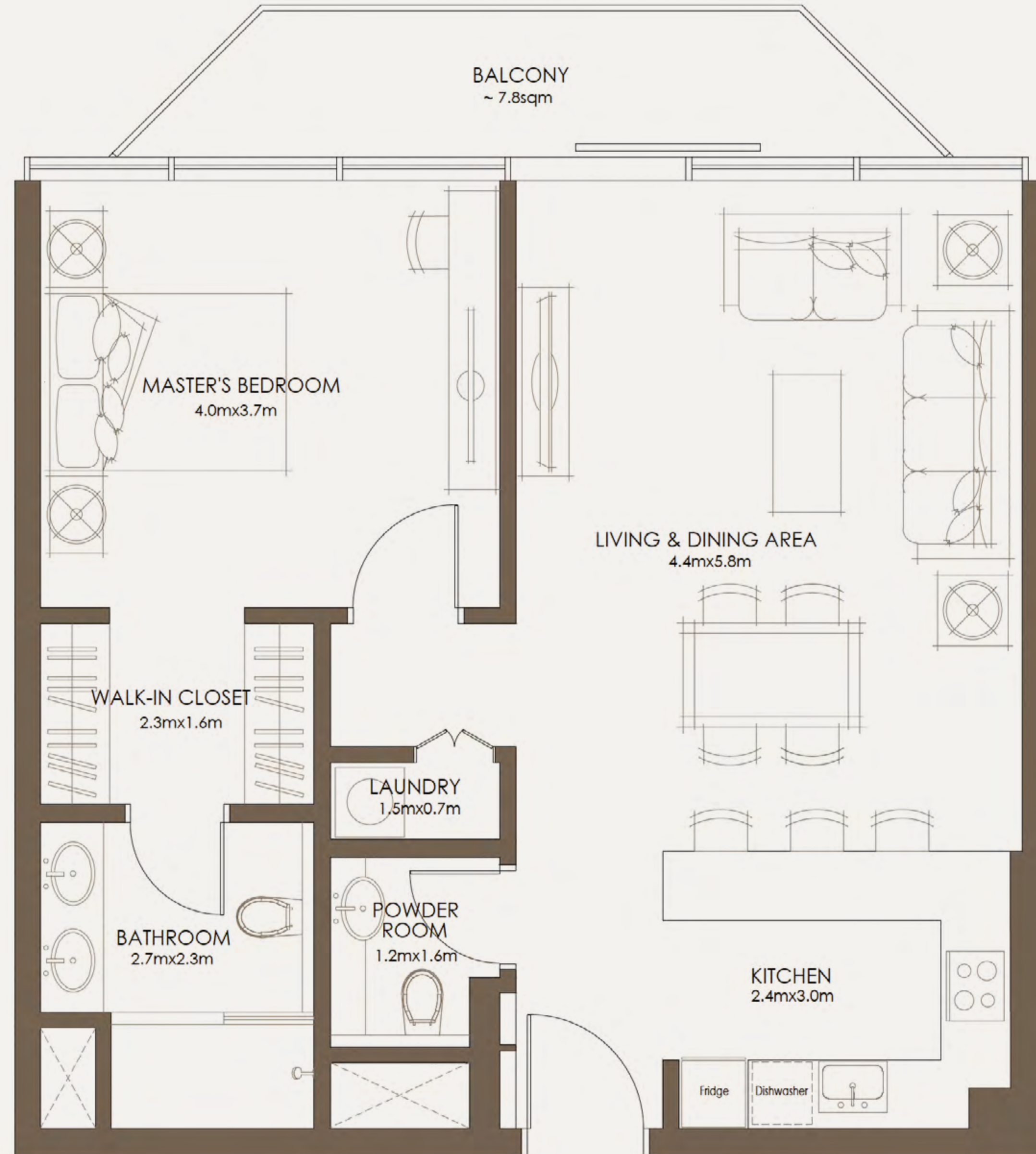
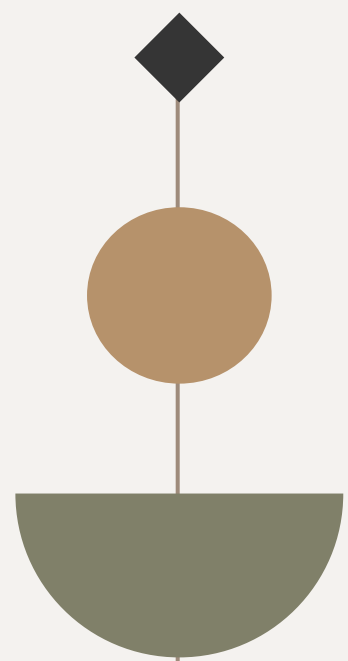


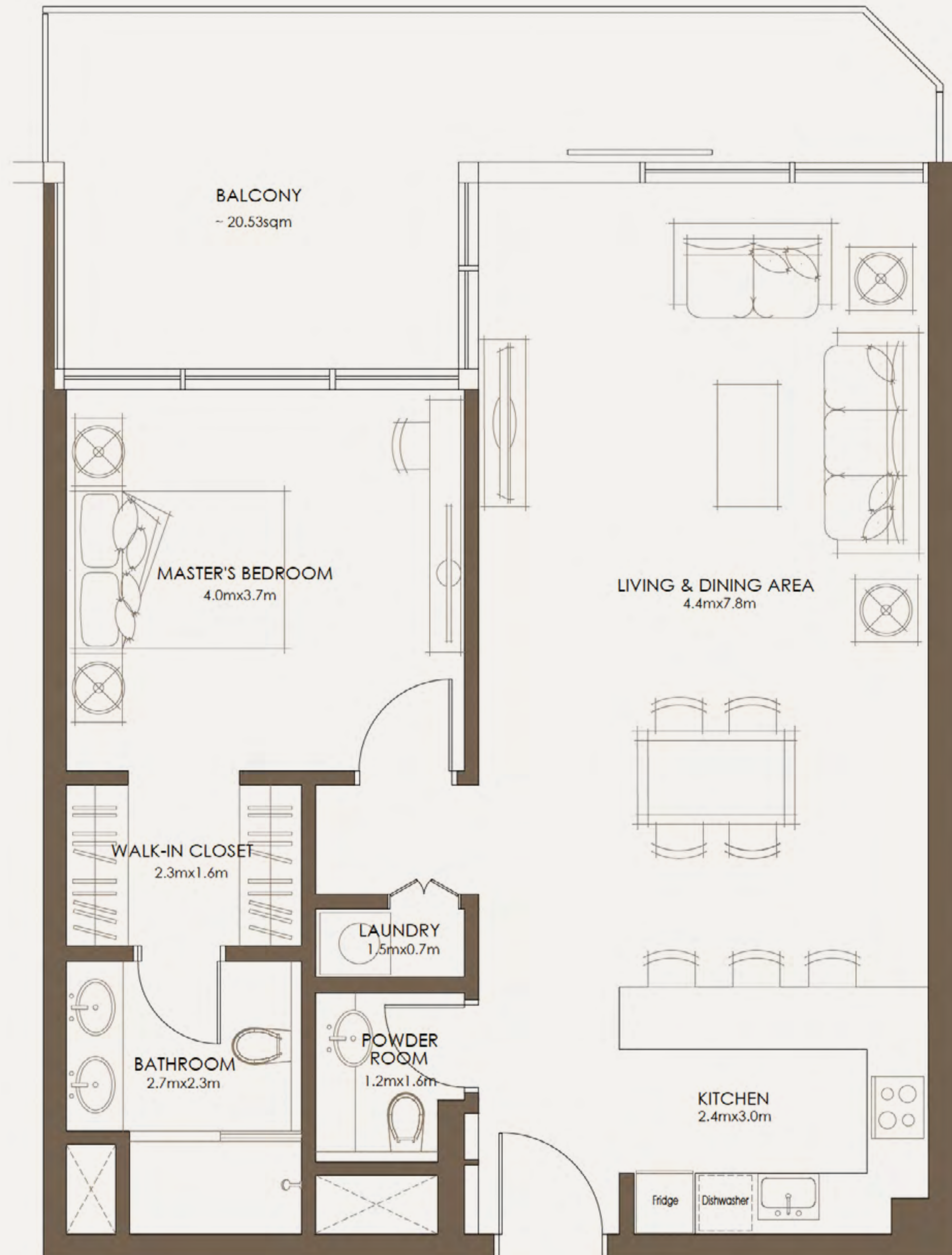
THE SOURCE OF WELLNESS

Choose from modern 1, 2 and 3-bed
apartments and start your journey to holistic
health from the comfort of your home.

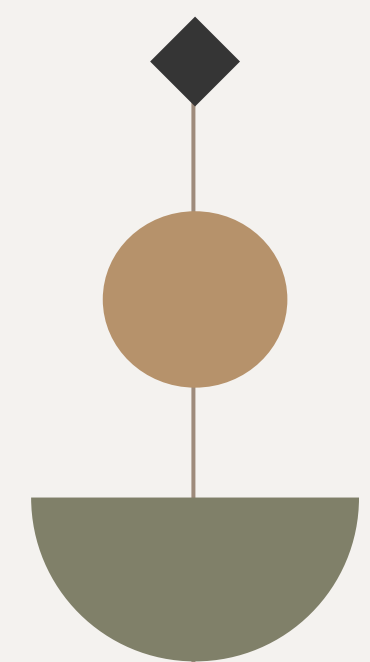


TYPE A
1 BEDROOM

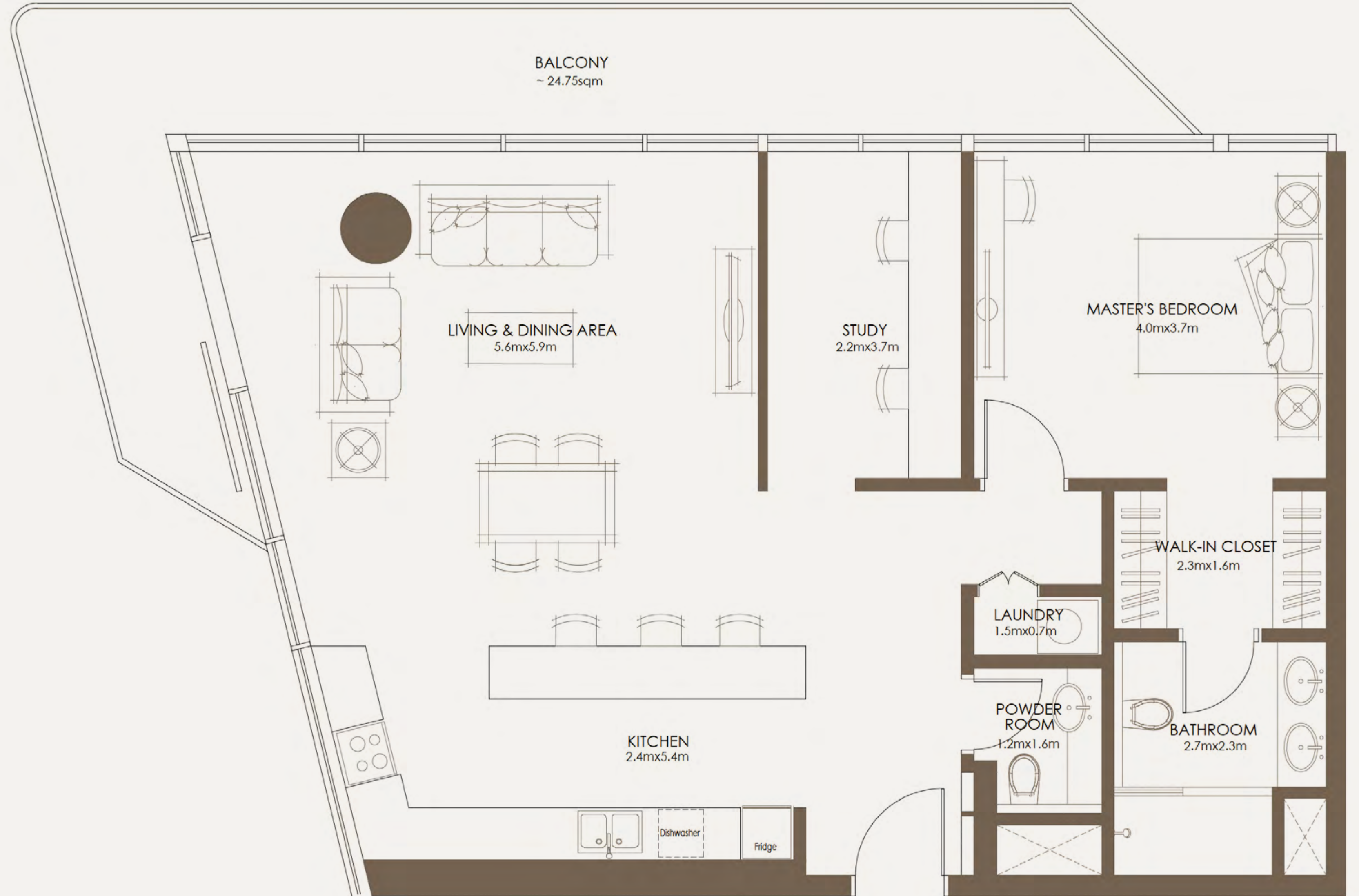
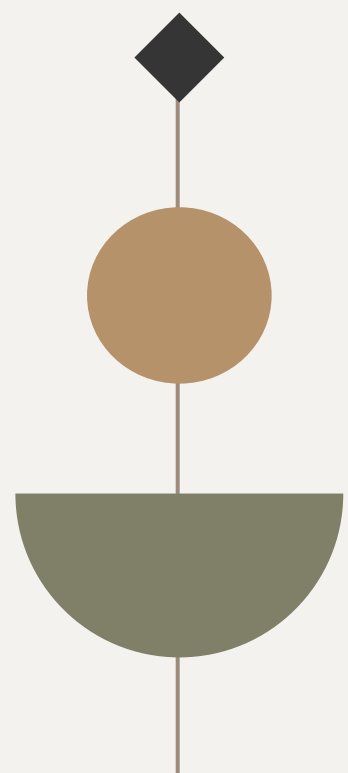




TYPE B
1 BEDROOM

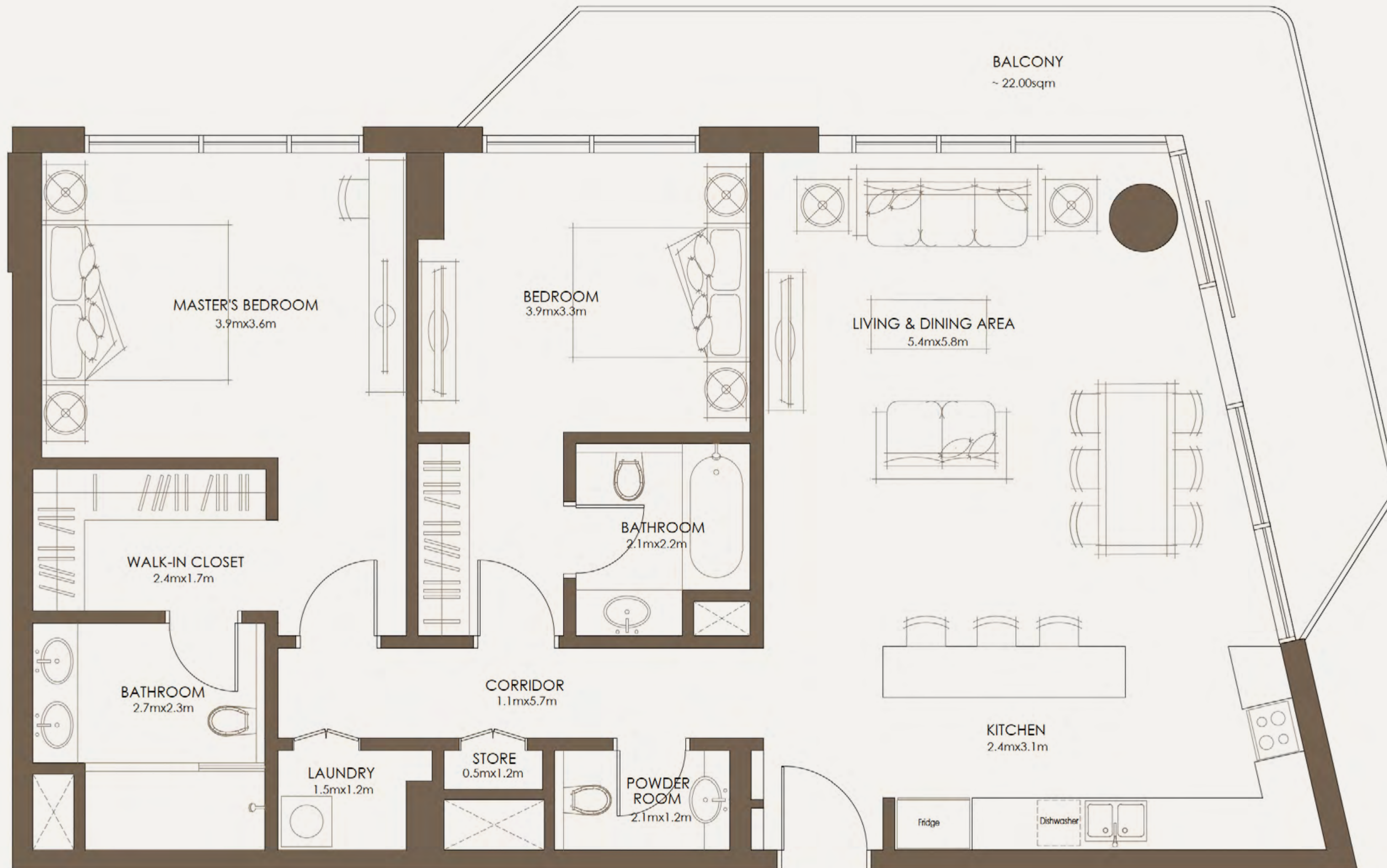


TYPE C
1 BEDROOM



SLIP INTO 8 HOURS
OF SERENITY

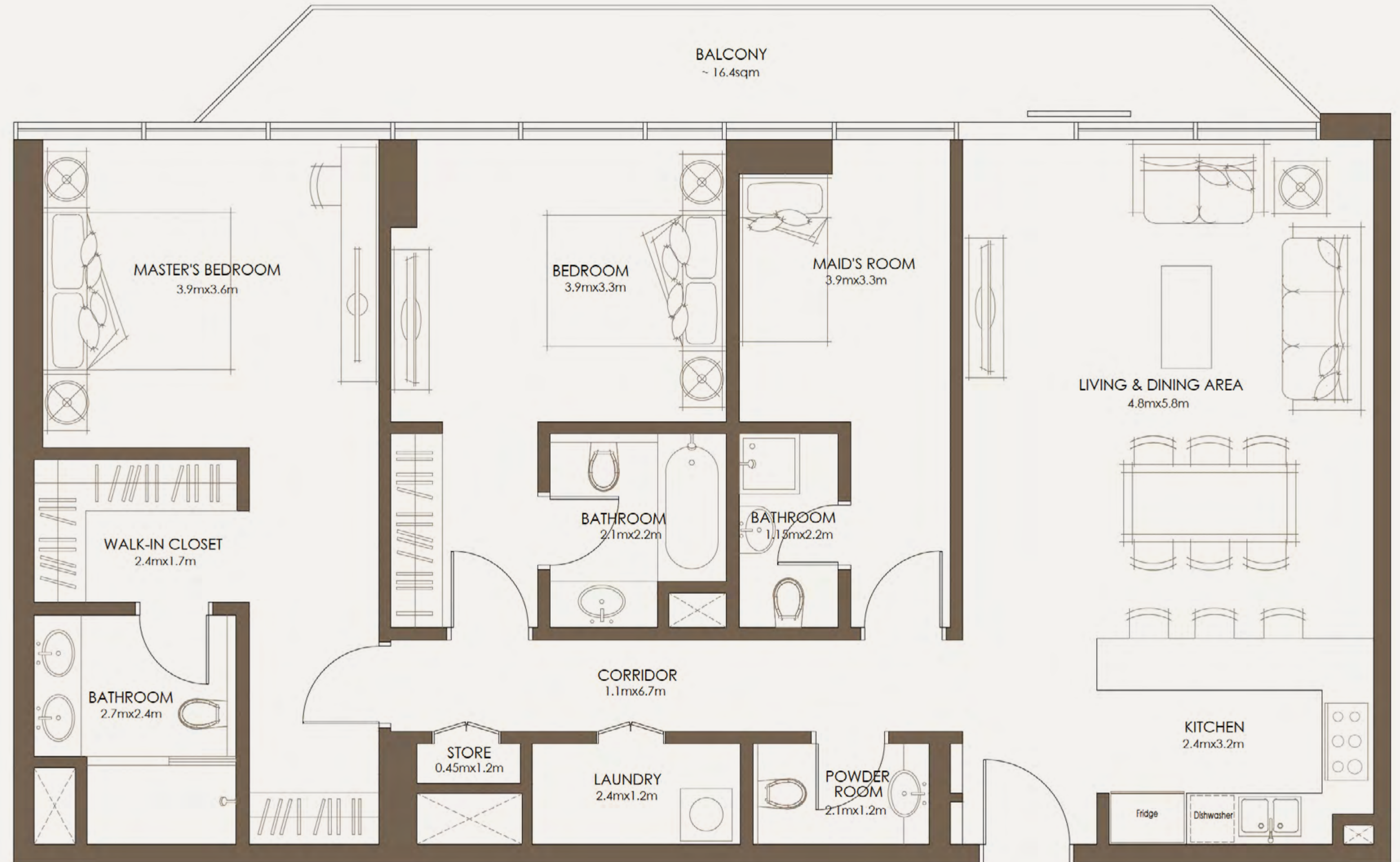
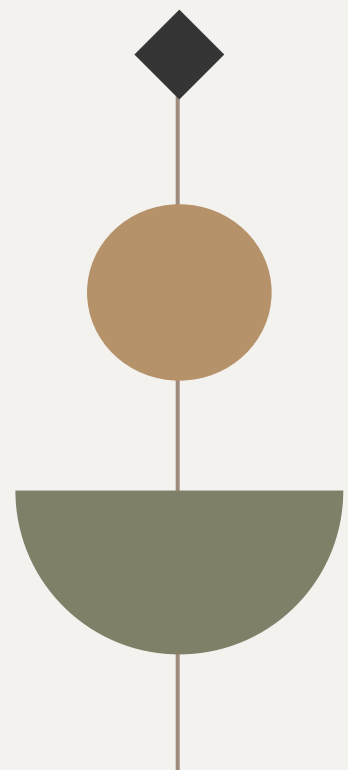




TYPE A
2 BEDROOM

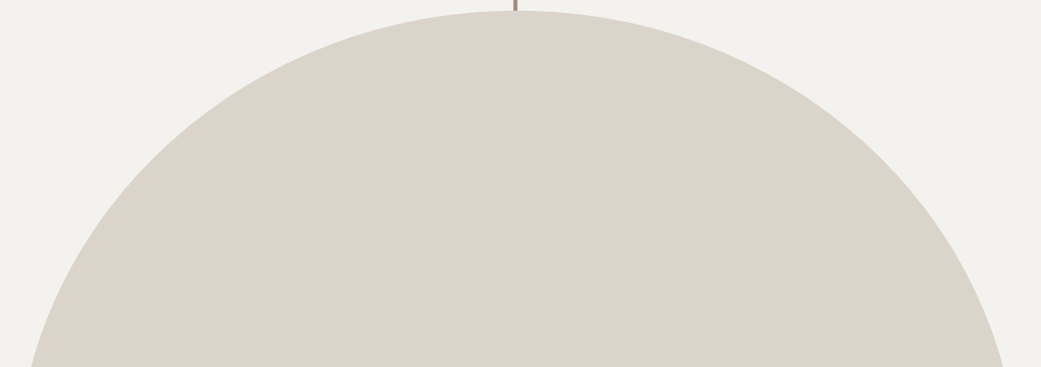
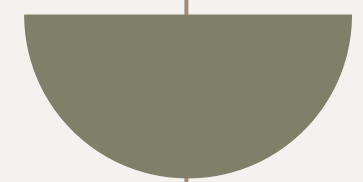


TYPE B
2 BEDROOM





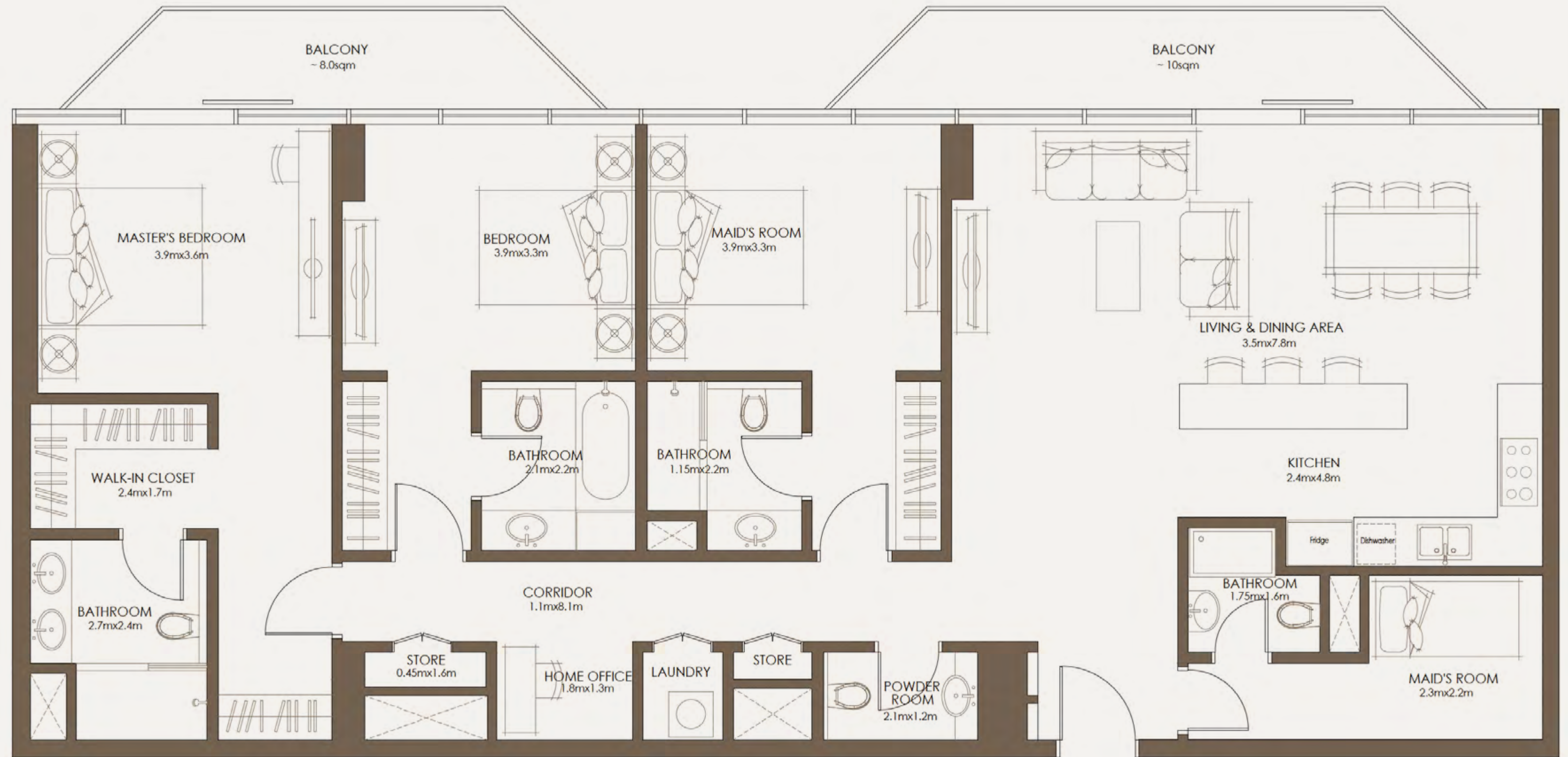
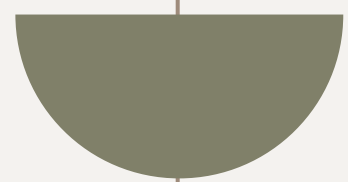
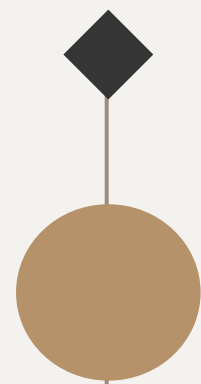
TYPE C
2 BEDROOM

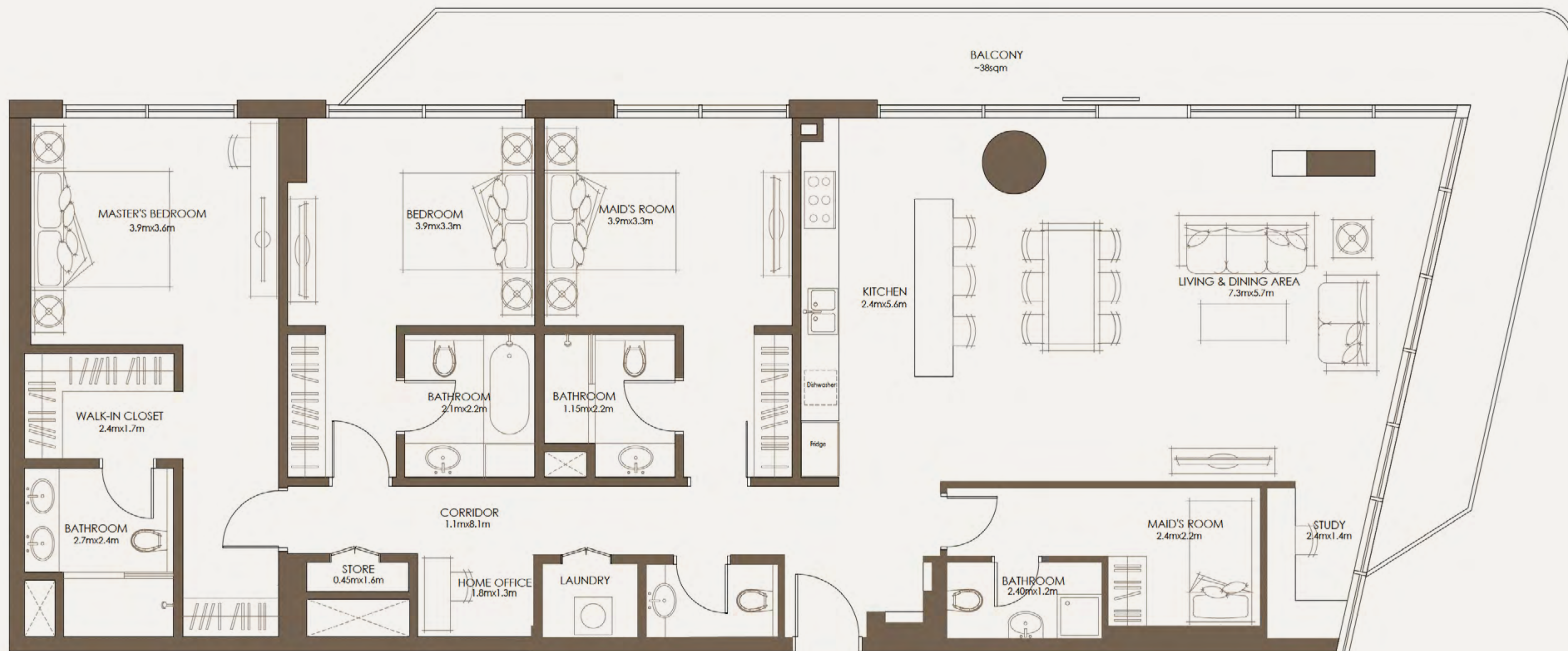


SPACE TO UNWIND
OR ENTERTAIN



TYPE A
3 BEDROOM





TYPE B
3 BEDROOM





PLANNED FOR LIVING WELL

Explore your unique apartment retreat,
thoughtfully designed to enhance every day.

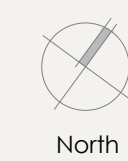


FLOORPLATE
NORTH

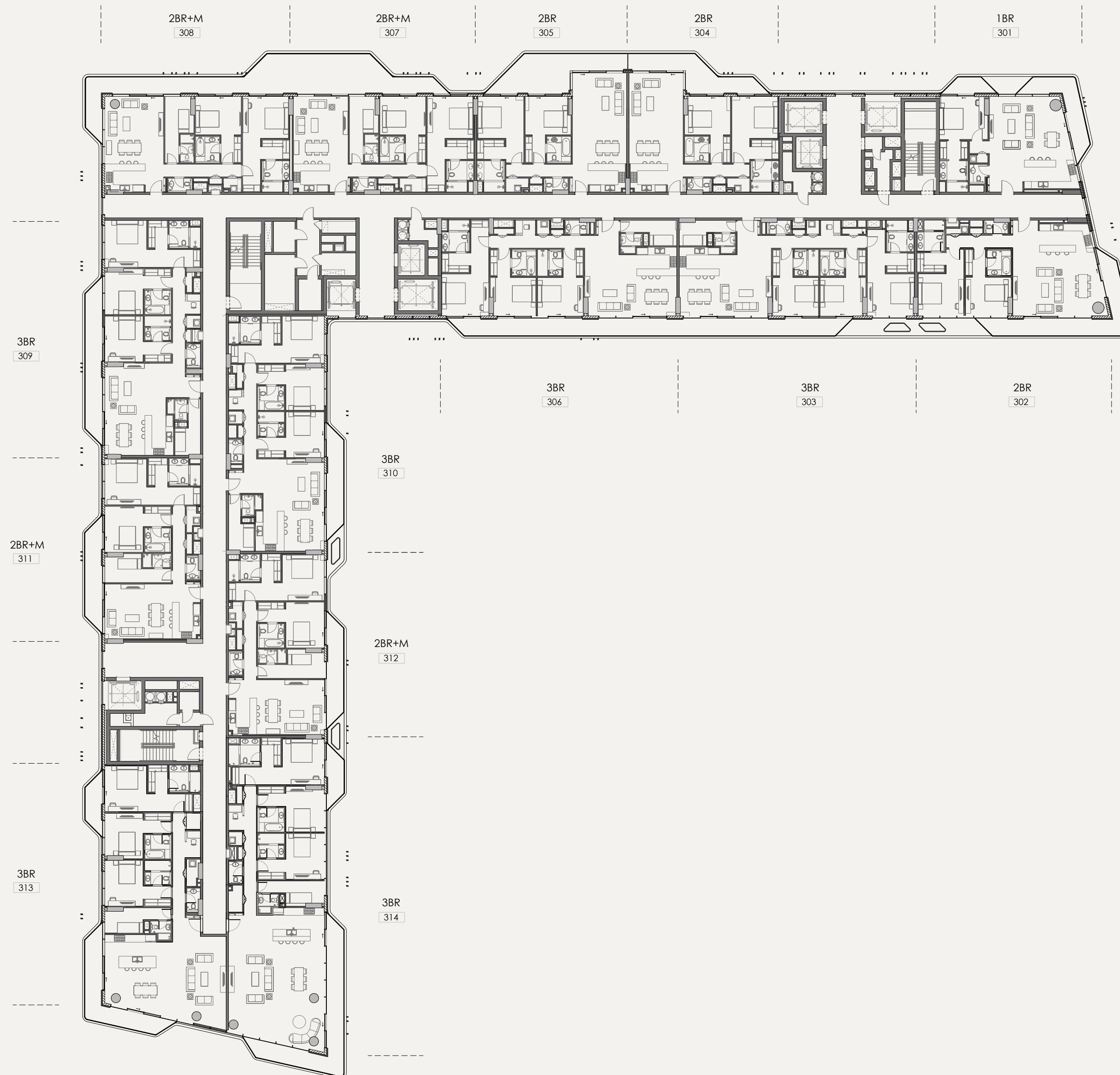


R18 - 1ST FLOOR

FLOORPLATE
NORTH



FLOORPLATE
NORTH



FLOORPLATE
NORTH



FLOORPLATE
NORTH

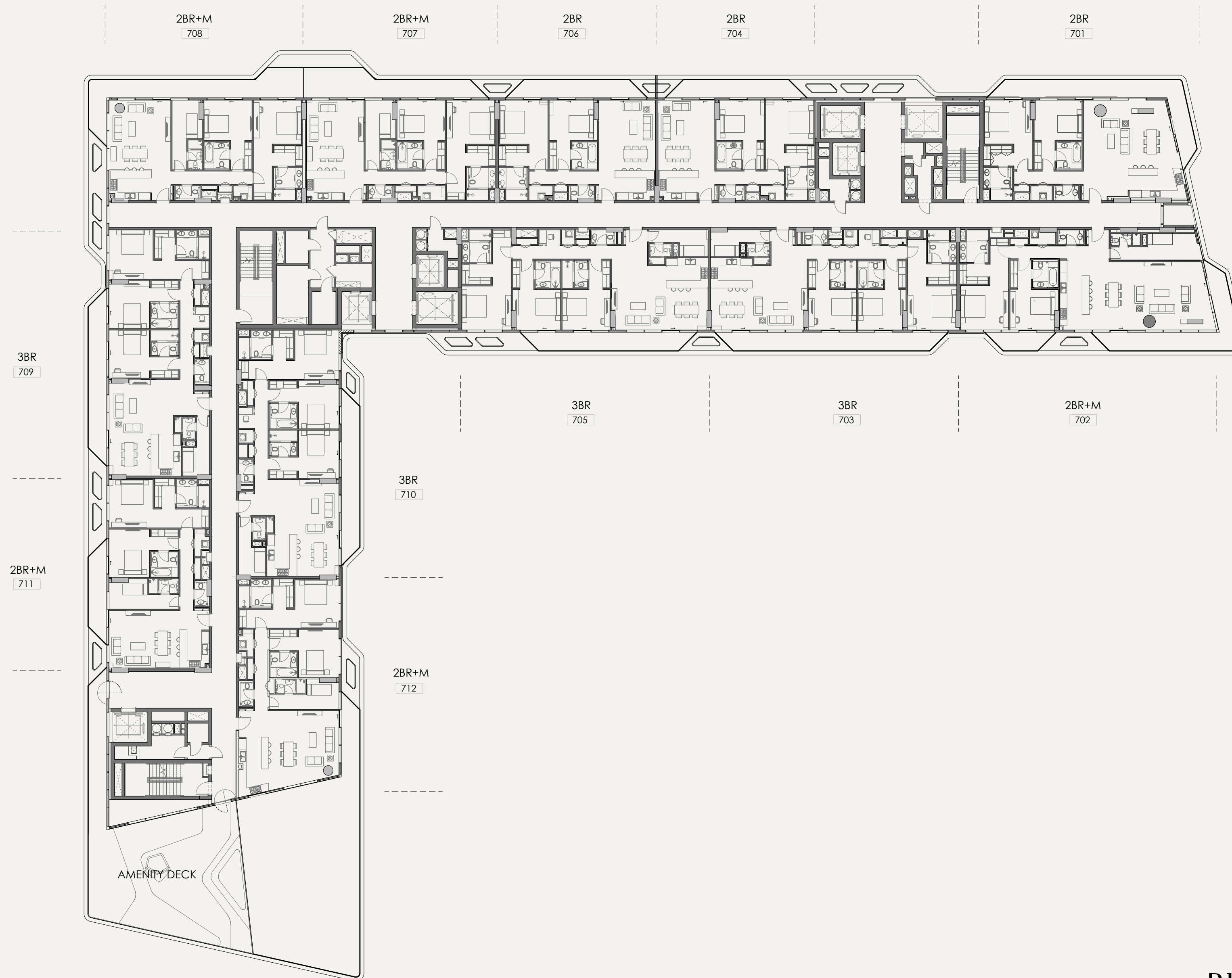


FLOORPLATE
NORTH



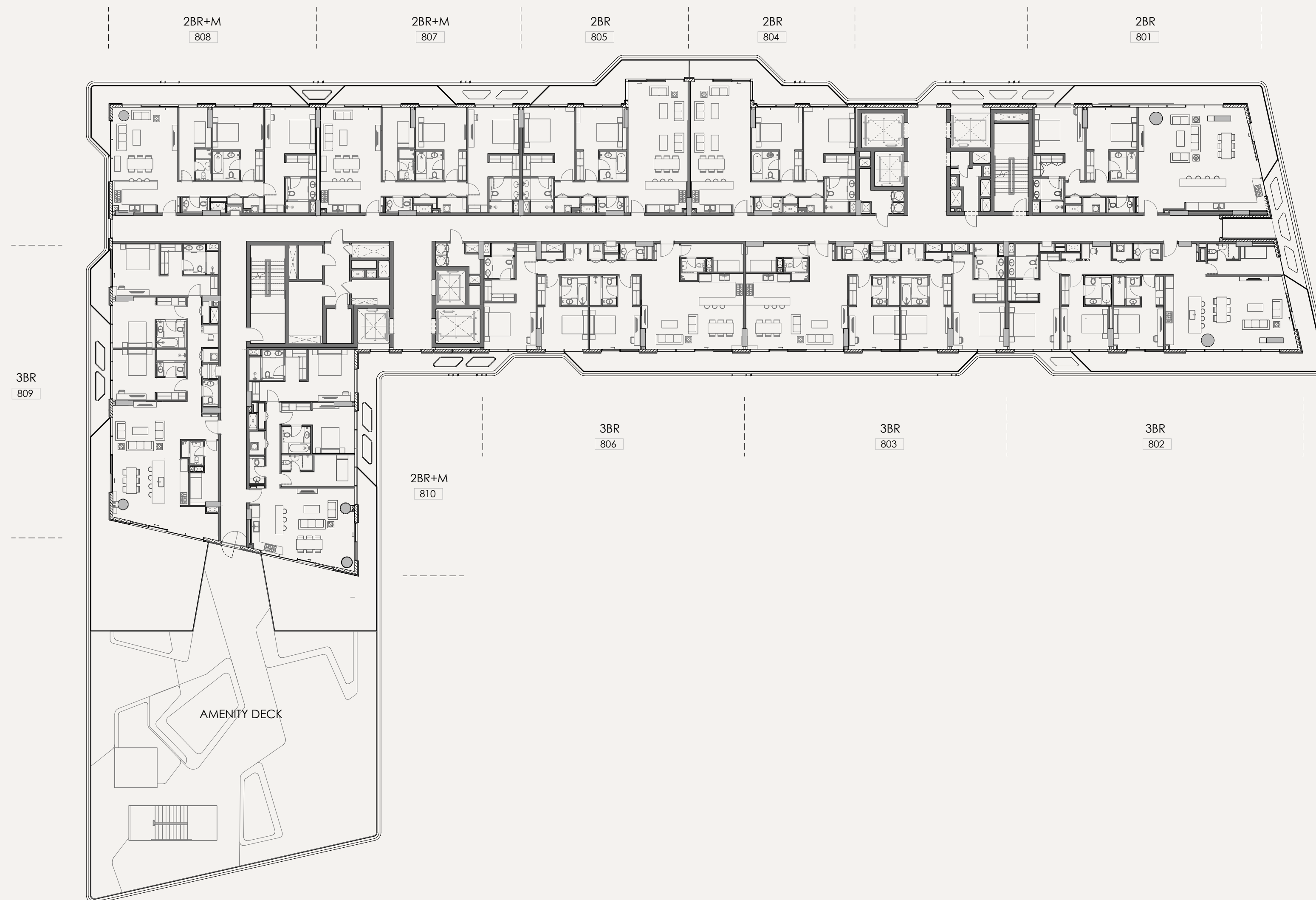
North

FLOORPLATE
NORTH



North

FLOORPLATE
NORTH



YOUR TRANQUIL RETREAT
AT THE HEART OF IT ALL





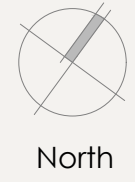
North



FLOORPLATE SOUTH



R19 - 1st FLOOR



North



FLOORPLATE SOUTH



R19 - 2nd FLOOR



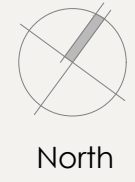
North



FLOORPLATE SOUTH



R19 - 3rd FLOOR



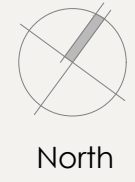
North



FLOORPLATE SOUTH

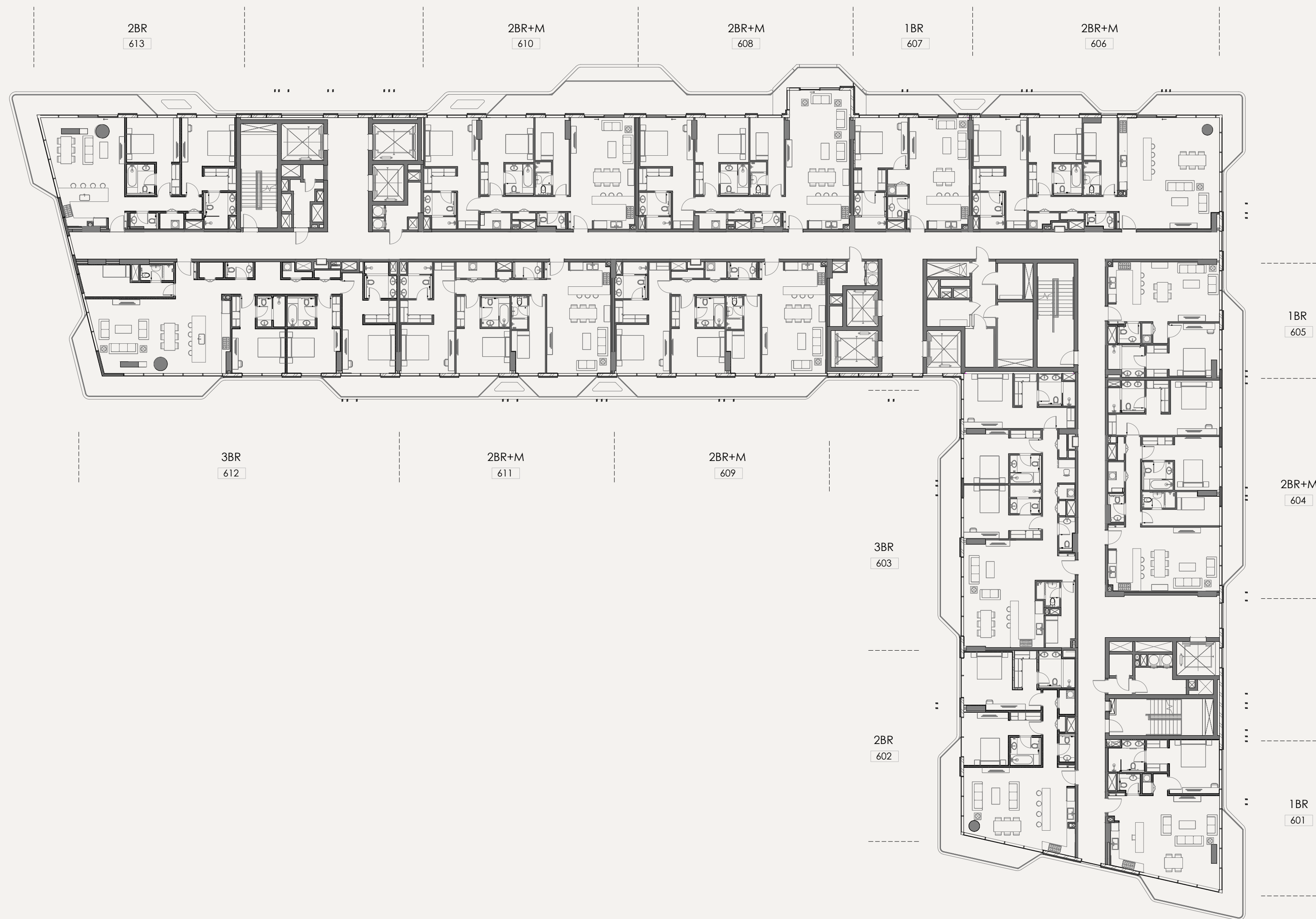


R19 - 4th FLOOR



FLOORPLATE
SOUTH





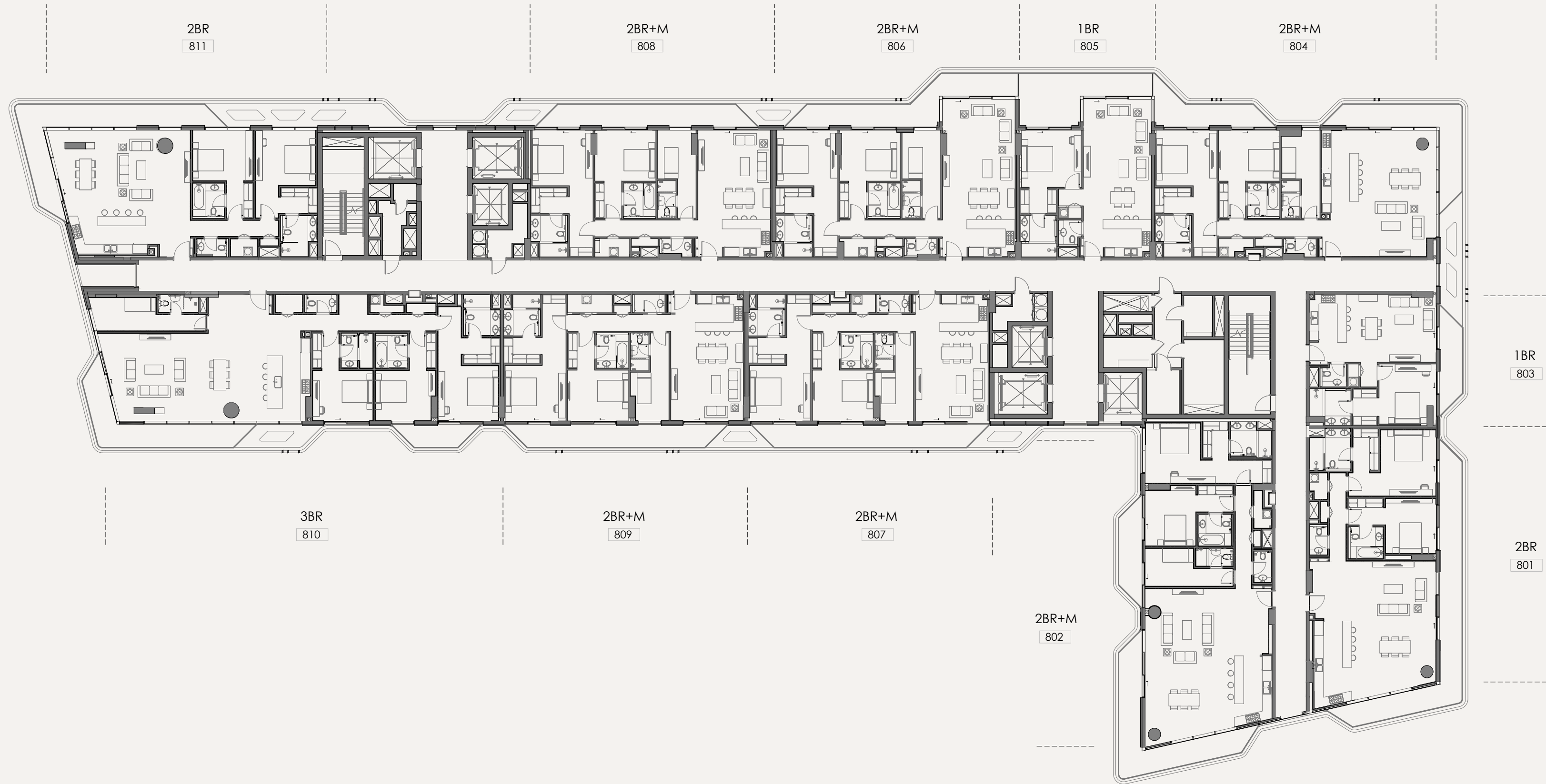
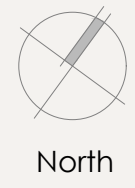
FLOORPLATE
SOUTH





FLOORPLATE
SOUTH





FLOORPLATE
SOUTH



AN INVIGORATING VIEW
RISES TO MEET YOU



MINUTES FROM SAADIYAT
GOLF CLUB AND THE LURE
OF THE LUSH FAIRWAY



An aerial photograph of the ocean showing several parallel waves moving from the top left towards the bottom right. The water is a deep teal color, and the waves are breaking, creating white foam. The text is overlaid in white, sans-serif font.

INHALE.

EXHALE.

ALL IS WELL



ALDAR.COM
800 ALDAR