

MILESTONE  
RESIDENCES

MILESTONE  
RESIDENCES





Crafting Horizons  
Where Elegance  
Meets Serenity



## Mission Statement

At **Axiom Prime Real Estate Development**, we are dedicated to redefining the essence of bespoke living in Dubai's vibrant landscape. Our mission is to craft intimate communities, merging innovative design and exceptional quality to create homes that are not just structures but sanctuaries of luxury and comfort.



Experience the  
Refinement of  
Sophisticated Living



MILESTONE  
RESIDENCES

EDEN



MILESTONE  
RESOURCES

Location



TOWARDS  
ABU DHABI

TOWARDS  
SHARJAH

PALM  
JEBEL ALI

PALM JUMEIRAH

THE WORLD

BURJ AL ARAB

DUBAI MARINA

MALL OF  
THE  
EMIRATES

DOWNTOWN DUBAI  
& BURJ KHALIFA

DUBAI  
INTERNATIONAL  
AIRPORT

JUMEIRAH  
VILLAGE  
CIRCLE

DUBAI  
AUTODROME

JEBEL ALI  
INDUSTRIAL AREA

DUBAI WORLD  
CENTRAL



14 Minutes  
Jumeirah Golf Estate



30 Minutes  
Dubai International Airport



23 Minutes  
Burj Khalifa



20 Minutes  
Mall of the Emirates



20 Minutes  
Dubai Marina



16 Minutes  
Jebel Ali Industrial Area



15 Minutes  
Dubai Hills Mall

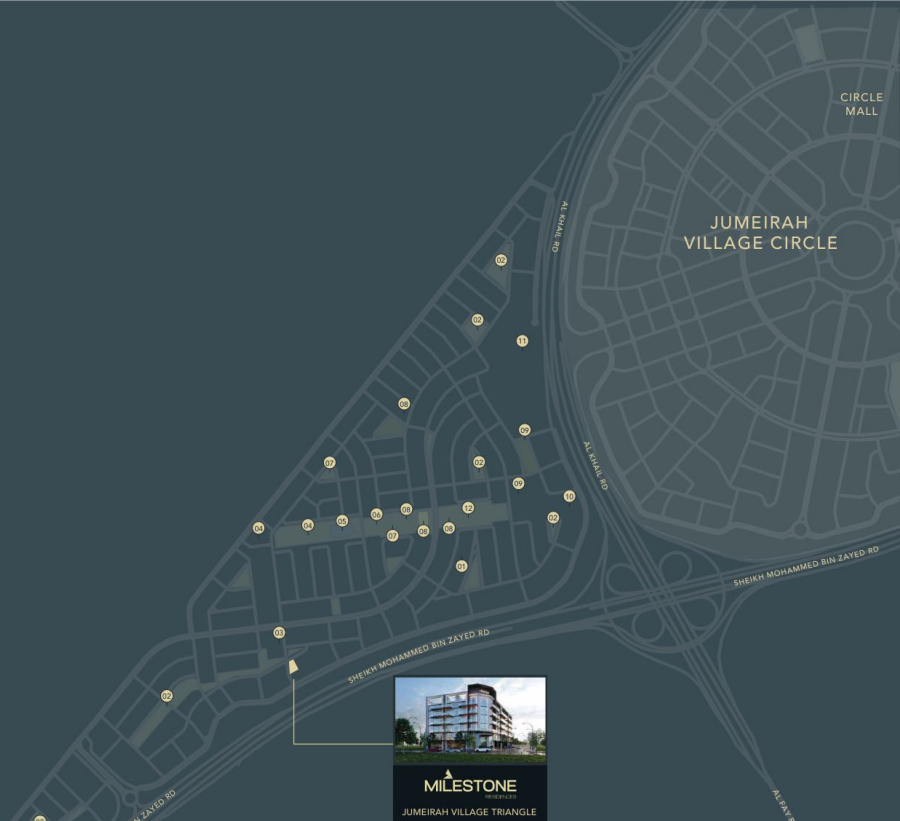


25 Minutes  
Jumeirah Beach

# Provident.

Jumeirah Village Triangle, a canvas of lush greenery and serene landscapes, offers an escape from the city's fervor without forsaking its convenience. Nestled within this verdant enclave, **Milestone Residences** by Axiom stands as a testament to tranquil living amid Dubai's dynamic pulse.

- |    |  |    |                      |
|----|--|----|----------------------|
| 01 | Milestone Residences                     | 07 | Basketball Courts    |
| 02 | Community Parks                          | 08 | Tennis Courts        |
| 03 | Jumeirah Village Triangle Water Fountain | 09 | Sunmarke School      |
| 04 | Arcadia School                           | 10 | Supermarket          |
| 05 | Jumeirah Village Triangle Pond           | 11 | Al Khail Avenue Mall |
| 06 | Soccer Field                             | 12 | Dog Park             |







## About the Project

**Milestone Residences** by Axiom is an exclusive haven of 51 contemporary apartments, designed for those who seek a balance between urban convenience and natural beauty. Each space is curated to be a portrait of luxury and privacy, offering a unique living experience in the heart of Jumeirah Village Triangle.

Provident.





## **Modern Elegance in Design:**

A Signature of Axiom Prime  
Real Estate Development

Our design philosophy at **Milestone Residences** intertwines modern aesthetics with functional elegance. The clean lines and minimalist approach reflect a commitment to quality and craftsmanship, creating spaces that are both timeless and forward-thinking.





**Contemporary Design,**  
Timeless Elegance

**Milestone Residences** by Axiom presents an architectural masterpiece: a statement of intent and a commitment to excellence. The facade blends sleek modernity with subtle grandeur, inviting residents into a world where every detail epitomises luxury.

Provident





## **First Impressions** of Lasting Grandeur

Step into a sumptuous embrace at **Milestone Residences** reception area, where every arrival is celebrated. The space harmonises nature with design, featuring natural touches amidst contemporary elegance, ensuring a tranquil beginning of your sanctuary experience.



MILESTONE  
RESIDENCES





**Unwind in the luxury**  
of every moment

The lounge at **Milestone Residences** by Axiom is a confluence of comfort and sophistication. Here, residents unwind in the warmth of bespoke interiors that reflect the serene spirit of their community, a perfect retreat for moments of quiet contemplation or intimate gatherings.





## Serene Waters

Above the City Pulse

**Milestone Residences** rooftop pool area is a crowning jewel, a serene oasis in the sky. With panoramic views and a horizon that stretches into the cityscape, residents can bask in infinite relaxation, where water, sky, and the hum of the city unite.



MILESTONE  
RESIDENCES



## The Social Landscape of Refined Community Living

At the heart of **Milestone Residences** by Axiom lies the podium, a foundation that balances the beauty of nature with the pulse of community living. It's a space crafted for connectivity, interaction, and the simple pleasures of a well-lived life.





**State-of-the-Art Fitness**  
for an Elevated Life

Our state-of-the-art gym is the pinnacle of personal well-being. With equipment that caters to every aspect of fitness and walls that inspire through art, **Milestone Residences** gym is not just about physical health but a holistic approach to wellness.







## Interiors Defined by Craftsmanship and Comfort

The interiors of **Milestone Residences** by Axiom are a testament to meticulous craftsmanship and contemporary finesse. Each room is a canvas, where natural light paints the uncompromising quality of our materials and the innovative spirit of our designs.





## Spaces Where Life's Best Moments Unfold

The living room spaces at **Milestone Residences** by Axiom are designed to be the backdrop of your finest moments. Elegant, spacious, and versatile, they capture the essence of modern living while providing a window to the breathtaking views of Jumeirah Village Triangle.





## **Designed to Evoke**

The Spirit of  
Culinary Togetherness

**Milestone Residences** kitchens are a harmony of form and function, where culinary magic and family moments simmer together. Premium finishes and state-of-the-art appliances come together to inspire the creation of gastronomic delights.





## A Sanctuary Crafted Around Your Comforts

Retreat to the refuge of **Milestone Residences** bedrooms, where comfort meets chic modernity. The plush textures, ambient lighting, and serene palette create a relaxing and invigorating personal haven.







## **An Ambience of** Serenity and Perfection

**Milestone Residences** bathrooms are designed with a meticulous eye for detail. From the marble finishes to the premium fixtures, each element is selected to create an atmosphere of sophisticated tranquillity.

Provident.



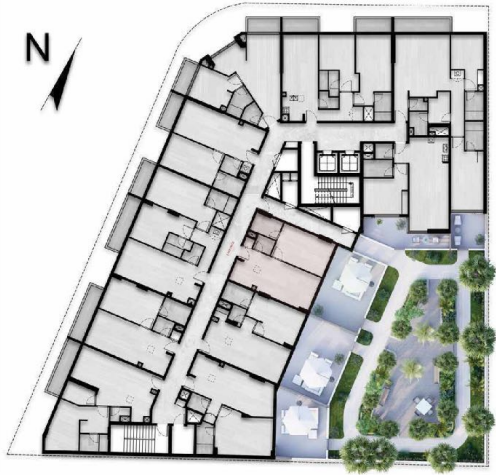


# Floor Plan



## Blueprints of Elegance

Discover the architectural harmony of **Milestone Residences** by Axiom, where each floorplan is an embodiment of thoughtful design and spatial symmetry, illustrating the fine art of luxury living.

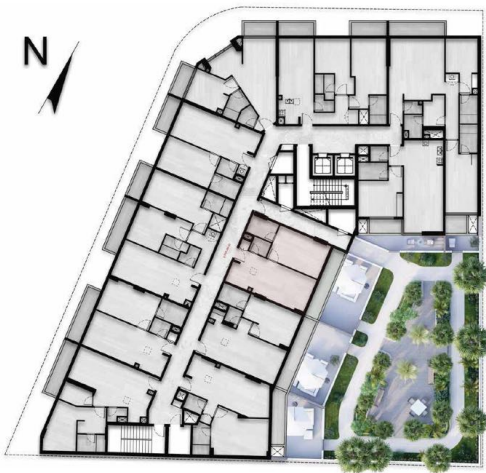


## Key Plan

## Unit 101

DESCRIPTION	ORIENTATION	RES. AREA (SQ FT.)	BALCONY AREA (SQ FT.)	TERRACE AREA (SQ FT.)	TOTAL AREA (SQ FT.)
1 BED RM FLAT	I. GARDEN (FIRST FLOOR)	686.09	N/A	403.75	1089.85

(\*): Layout, Area, Dimensions & Furniture might slightly change due to design development.



## Key Plan

## Units 201/ 301/ 401/ 501

DESCRIPTION	ORIENTATION	RES. AREA (SQ FT.)	BALCONY AREA (SQ FT.)	TERRACE AREA (SQ FT.)	TOTAL AREA (SQ FT.)
1 BED RM FLAT	I. GARDEN (2ND-5TH FLOORS)	686.09	117.06	N/A	803.15

(\*): Layout, Area, Dimensions & Furniture might slightly change due to design development.



## Key Plan

## Unit 102

DESCRIPTION	ORIENTATION	RES. AREA (SQ FT.)	BALCONY AREA (SQ FT.)	TERRACE AREA (SQ FT.)	TOTAL AREA (SQ FT.)
1 BED RM FLAT	I. GARDEN (FIRST FLOOR)	700.95	N/A	417.21	1118.16

(\*): Layout, Area, Dimensions & Furniture might slightly change due to design development.



## Key Plan

## Units 202/ 302/ 402/ 502

DESCRIPTION	ORIENTATION	RES. AREA (SQ. FT.)	BALCONY AREA (SQ. FT.)	TERRACE AREA (SQ. FT.)	TOTAL AREA (SQ. FT.)
1 BED RM FLAT	I. GARDEN (2ND-5TH FLOORS)	700.95	122.71	N/A	823.65

(\*) : Layout , Area , Dimensions & Furniture might slightly change due to design development .





## Key Plan

## Unit 103

DESCRIPTION	ORIENTATION	RES. AREA (SQ. FT.)	BALCONY AREA (SQ. FT.)	TERRACE AREA (SQ. FT.)	TOTAL AREA (SQ. FT.)
1 BED RM FLAT	I. GARDEN (FIRST FLOOR)	768.01	N/A	332.93	1100.93

(\*): Layout, Area, Dimensions & Furniture might slightly change due to design development.



## Key Plan

## Units 203/ 303/ 403/ 503

DESCRIPTION	ORIENTATION	RES. AREA (SQ. FT.)	BALCONY AREA (SQ. FT.)	TERRACE AREA (SQ. FT.)	TOTAL AREA (SQ. FT.)
1 BED RM FLAT	I. GARDEN (2ND-5TH FLOORS)	768.01	91.56	N/A	859.57

(\*): Layout, Area, Dimensions & Furniture might slightly change due to design development.



## Key Plan

## Units 104/ 204/ 304/ 404/ 504

DESCRIPTION	ORIENTATION	RES. AREA (SQ FT.)	BALCONY AREA (SQ FT.)	TERRACE AREA (SQ FT.)	TOTAL AREA (SQ FT.)
1 BED RM FLAT	STREET (1ST-5TH FLOORS)	815.15	93.65	N/A	908.80

(\*): Layout, Area, Dimensions & Furniture might slightly change due to design development.



## Key Plan

### Units 105/ 205/ 305/ 405/ 505

DESCRIPTION	ORIENTATION	RES. AREA (SQ FT.)	BALCONY AREA (SQ FT.)	TERRACE AREA (SQ FT.)	TOTAL AREA (SQ FT.)
1 BED RM FLAT	STREET (1ST-5TH FLOORS)	693.84	93.65	N/A	787.49

(\*): Layout , Area , Dimensions & Furniture might slightly change due to design development .



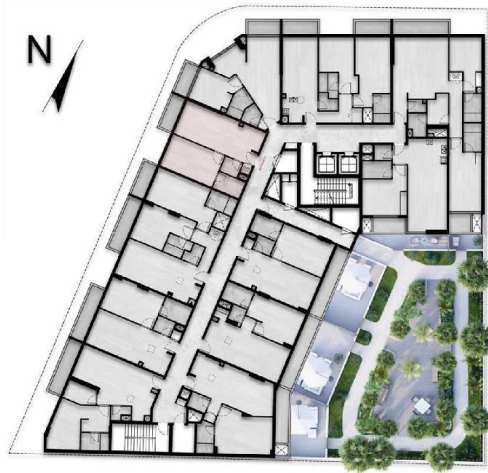
## Key Plan



## Units 106/ 206/ 306/ 406/ 506

DESCRIPTION	ORIENTATION	RES. AREA (SQ. FT.)	BALCONY AREA (SQ. FT.)	TERRACE AREA (SQ. FT.)	TOTAL AREA (SQ. FT.)
2 BED RM FLAT	STREET (1ST-5TH FLOORS)	1058.31	155.00	N/A	1213.31

(\*): Layout, Area, Dimensions & Furniture might slightly change due to design development.



## Key Plan

## Units 107/ 207/ 307/ 407/ 507

DESCRIPTION	ORIENTATION	RES. AREA (SQ. FT.)	BALCONY AREA (SQ. FT.)	TERRACE AREA (SQ. FT.)	TOTAL AREA (SQ. FT.)
1 BED RM FLAT	STREET (1ST-5TH FLOORS)	673.61	61.35	N/A	734.96

(\*): Layout , Area , Dimensions & Furniture might slightly change due to design development .



## Key Plan

## Units 208/ 308/ 408/ 508

DESCRIPTION	ORIENTATION	RES. AREA (SQ FT.)	BALCONY AREA (SQ FT.)	TERRACE AREA (SQ FT.)	TOTAL AREA (SQ FT.)
1 BED RM FLAT	STREET/DISTRICT PARK (2ND-5TH FLOORS)	834.89	113.02	N/A	947.91

(\*): Layout, Area, Dimensions & Furniture might slightly change due to design development.



## Key Plan

## Units 109/ 209/ 309/ 409

DESCRIPTION	ORIENTATION	RES. AREA (SQ FT.)	BALCONY AREA (SQ FT.)	TERRACE AREA (SQ FT.)	TOTAL AREA (SQ FT.)
2 BED RM FLAT	STREET/DISTRICT PARK (1ST-4TH FLOORS)	1007.61	122.71	N/A	1130.32

(\*): Layout, Area, Dimensions & Furniture might slightly change due to design development.





## Key Plan

## Unit 110

DESCRIPTION	ORIENTATION	RES. AREA (SQ. FT.)	BALCONY AREA (SQ. FT.)	TERRACE AREA (SQ. FT.)	TOTAL AREA (SQ. FT.)
2 BED RM FLAT	STREET/DISTRICT PARK /I. GARDEN (FIRST FLOOR)	1208.57	85.79	132.29	1426.65

(\*): Layout, Area, Dimensions & Furniture might slightly change due to design development.





## Key Plan

## Units 210/ 310/ 410

DESCRIPTION	ORIENTATION	RES. AREA (SQ FT.)	BALCONY AREA (SQ FT.)	TERRACE AREA (SQ FT.)	TOTAL AREA (SQ FT.)
2 BED RM FLAT	STREET/DISTRICT PARK /L. GARDEN (2ND-4TH FLOORS)	1208.57	85.79	132.29	1426.65



(\*): Layout , Area , Dimensions & Furniture might slightly change due to design development .



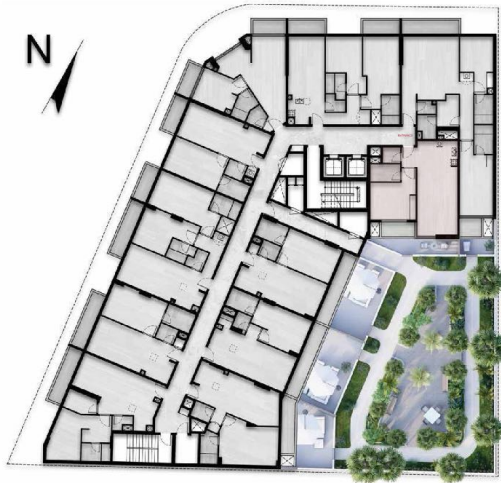
## Key Plan



## Unit 111

DESCRIPTION	ORIENTATION	RES. AREA (SQ FT.)	BALCONY AREA (SQ FT.)	TERRACE AREA (SQ FT.)	TOTAL AREA (SQ FT.)
1 BED RM FLAT	I. GARDEN (FIRST FLOOR)	744.22	N/A	199.02	943.24

(\*): Layout, Area, Dimensions & Furniture might slightly change due to design development.

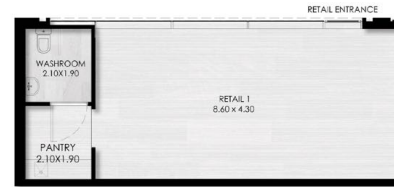
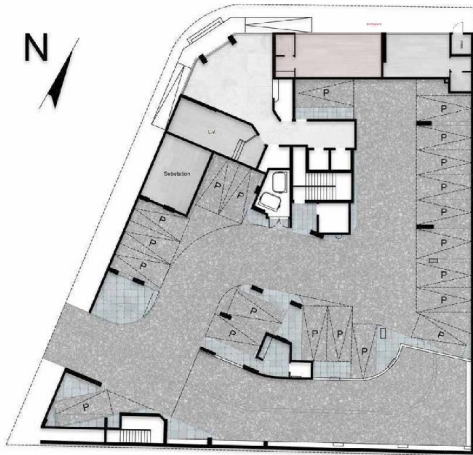


## Key Plan

## Units 211/ 311/ 411

DESCRIPTION	ORIENTATION	RES. AREA (SQ FT.)	BALCONY AREA (SQ FT.)	TERRACE AREA (SQ FT.)	TOTAL AREA (SQ FT.)
1 BED RM FLAT	I. GARDEN (2ND-4TH FLOORS)	744.22	N/A	199.02	943.24

(\*): Layout , Area , Dimensions & Furniture might slightly change due to design development .

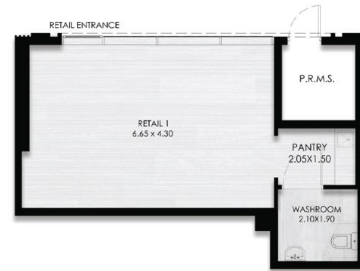
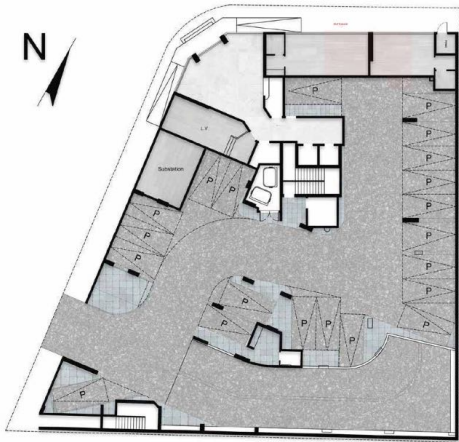


## Key Plan

## Retail R/1

DESCRIPTION	ORIENTATION	RES. AREA (SQ FT.)	BALCONY AREA (SQ FT.)	TERRACE AREA (SQ FT.)	TOTAL AREA (SQ FT.)
RETAIL	STREET/DISTRICT PARK (GF)	N/A	N/A	N/A	539.59

(\*): Layout, Area, Dimensions & Furniture might slightly change due to design development.



## Key Plan

## Retail R/2

DESCRIPTION	ORIENTATION	RES. AREA (SQ FT.)	BALCONY AREA (SQ FT.)	TERRACE AREA (SQ FT.)	TOTAL AREA (SQ FT.)
RETAIL	STREET/DISTRICT PARK (GF)	N/A	N/A	N/A	444.54

(\*): Layout, Area, Dimensions & Furniture might slightly change due to design development.



AXIOM  
PRIME  
REAL ESTATE DEVELOPMENT