

The background of the image is a dense, textured pattern of green leaves, likely from a plant like basil or similar, filling the entire frame. The leaves are in various shades of green, from a vibrant emerald to a darker forest green, and are arranged in a natural, overlapping manner. The lighting is soft, highlighting the veins and edges of the leaves.

senses

AT THE FIELDS



**SENSE
YOUR
REALITY**



© 2014 The Dubai Land Department. All rights reserved. This is a conceptual rendering and does not represent the actual site. The Dubai Land Department is not responsible for any errors or omissions. The Dubai Land Department is not responsible for any errors or omissions.



Meydan is the epitome of sophistication and elegance hosting the world's most spectacular race day, the prestigious Meydan Racecourse. One of Dubai's richest addresses, Meydan has now given life to an exclusive residential community – Senses at The Fields - which redefine living standards, from design and finish to lifestyle.







Senses at The Fields, a meticulous product is delivered, with attention to the fine details blending in a harmony of colors with complementary finishes and textures delivering a unique townhouse tastefully designed for luxury living.





FLAWLESS FINISHING



GRAND FITTINGS

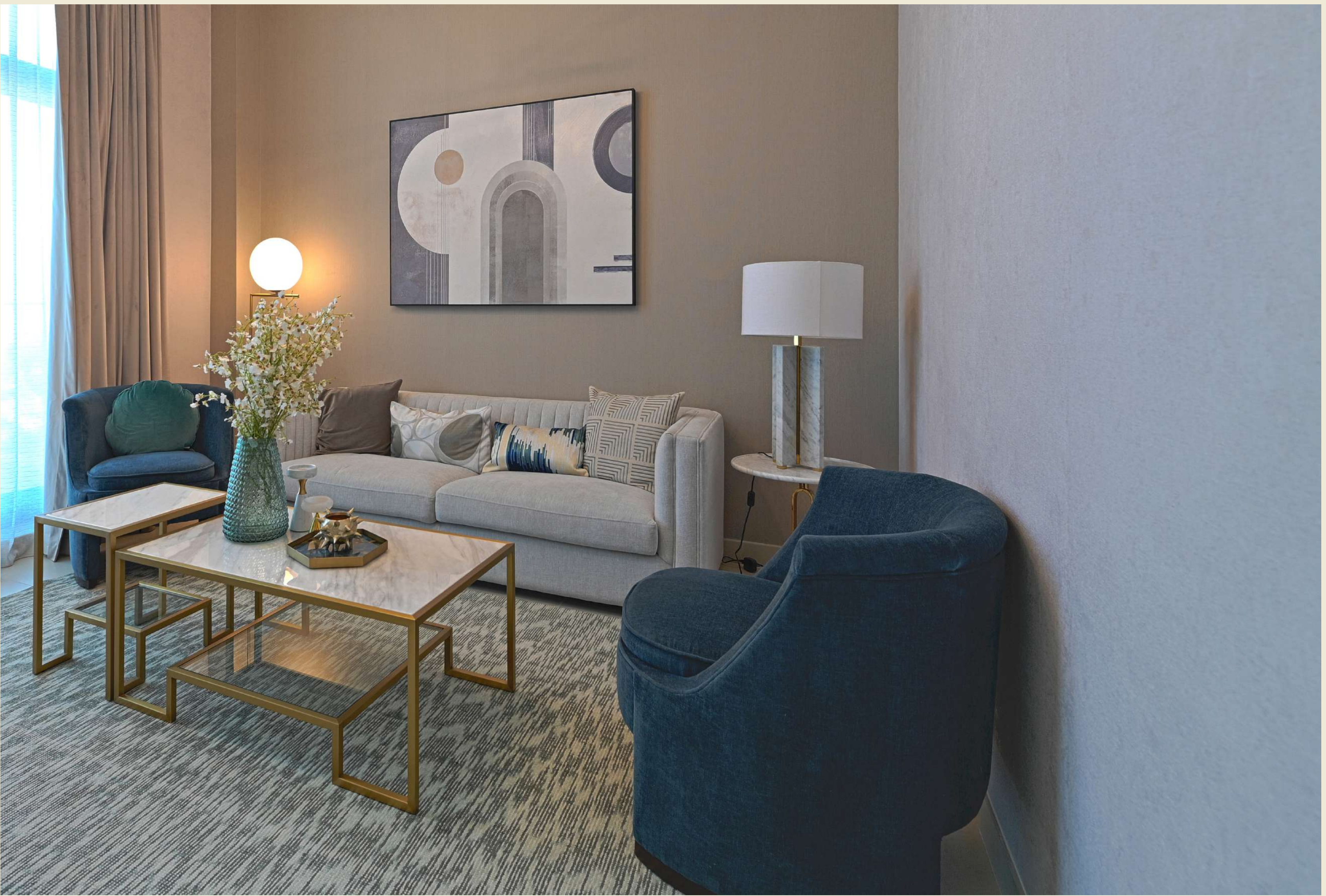
Senses, a stunning realty project, is adorned with the most exquisite and refined fittings, creating an ambiance that is nothing short of exceptional. The level of attention paid to every detail is evident throughout the property, from the luxurious furnishings to the tastefully selected artwork and accessories.

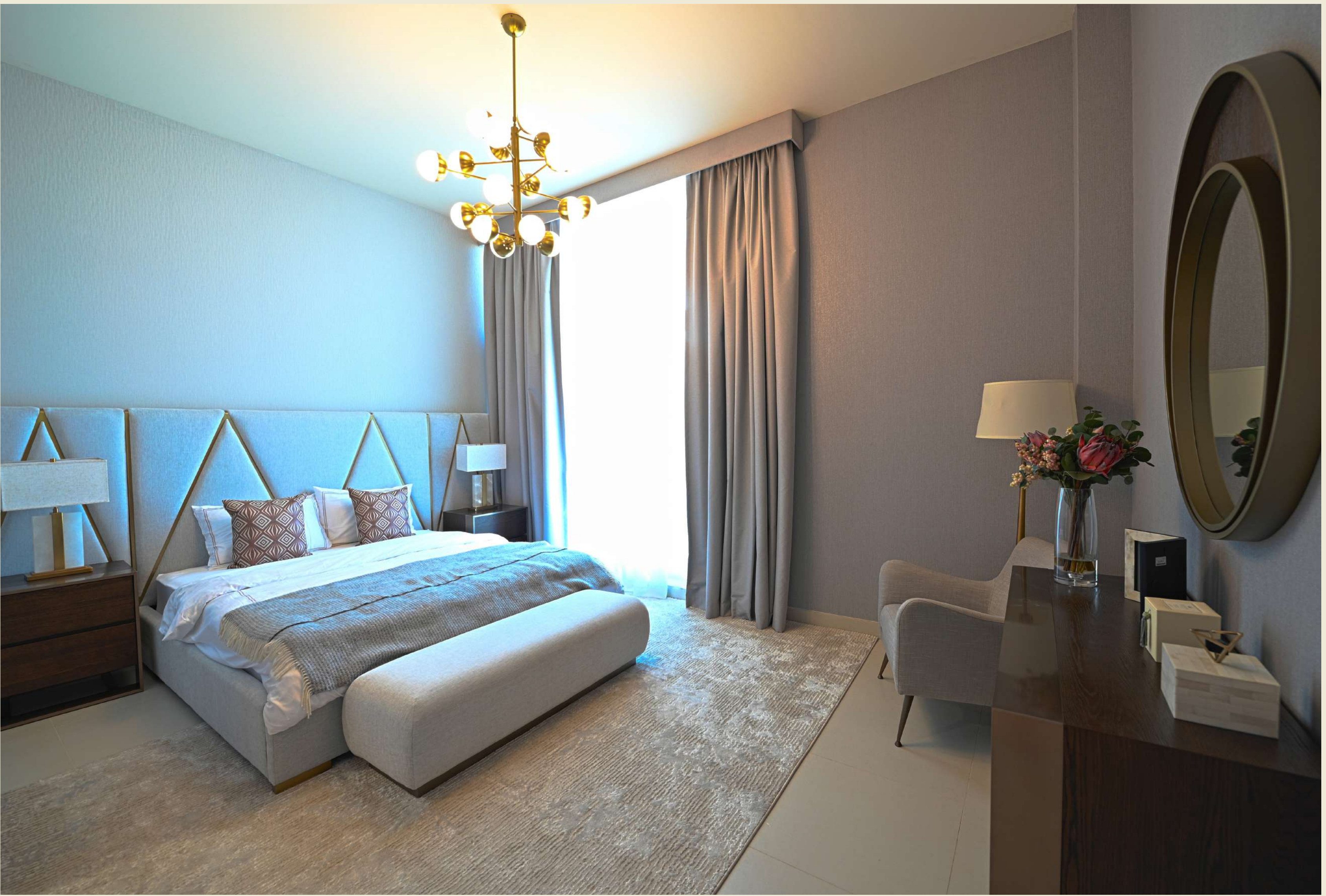


3 BEDROOM VILLA











4 BEDROOM VILLA







THE FIELDS
COMMUNITY AMENITIES



THE FIELDS COMMUNITY MALL

The Fields Community Mall caters to its residents with over 42 retail outlets comprising of a mini mart, chemist, florist, coffee shop, juice bar, party supplies store, exchange, nail salon, hair salon, barber, health centre, and pet shop.





THE FIELDS CLUB HOUSE

Here residents can enjoy the services of a gym, wellness centre, yoga area, kids play area (indoor/outdoor), residents lounge, children's party hall, and outdoor gardening area.



- 1. MOHAMMED BIN RASHED AL MAKTOUM CITY
- 2. MEYDAN RACECOURSE
- 3. BURJ KHALIFA
- 4. BURJ AL ARAB
- 5. JUMEIRAH MOSQUE
- 6. PALM JUMEIRAH
- 7. WORLDISLANDS
- 8. EMIRATES TOWERS
- 9. DUBAI INTERNATIONAL AIRPORT
- 10. DUBAI INTERNATIONAL FINANCIAL DISTRICT
- 11. DUBAI DESIGN DISTRICT

CREATING LIFETIME MEMORIES

Life thrives inside and outside these walls. Let inspiration lead the way in a fashionably designed home where only unforgettable memories can be made; a home that grows with families in celebration of their simplest and most joyful of moments.

G&Co.

4.15_{AED}

Total value launched and sold
in billions

With more than a decade of trust in the property market, G&Co is a household name in real estate development. Strong believers in a customer-centric approach, G&Co have successfully built and delivered luxurious living communities such as 'Millennium Estates' and 'Grand Views', both in the highly sought-after address of Mohammad Bin Rashid City.

7.2_{Sq. Ft.}

Total land developed
in millions

600+

Total units in mansions, villas and
townhouses



senses

AT THE FIELDS

KEY CONTRIBUTORS

G&Co.

Fortune5

meydan