



- PG -

MAISON

AT AL FURJAN



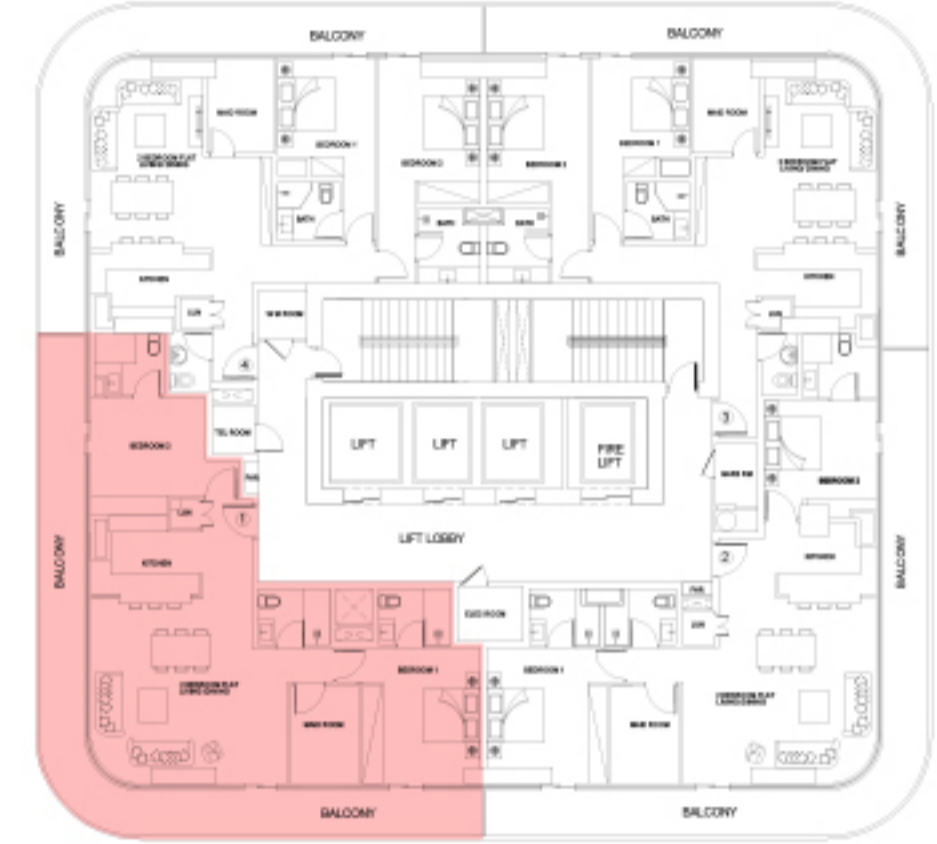
Suite Area: 1091.78 sqft
Balcony Area: 436.15 sqft
Total Area: 1527.94 sqft

Pool View / Furjan Villa View



Main Entrance

Pool View / Furjan Villa View



Seaside

Main Entrance

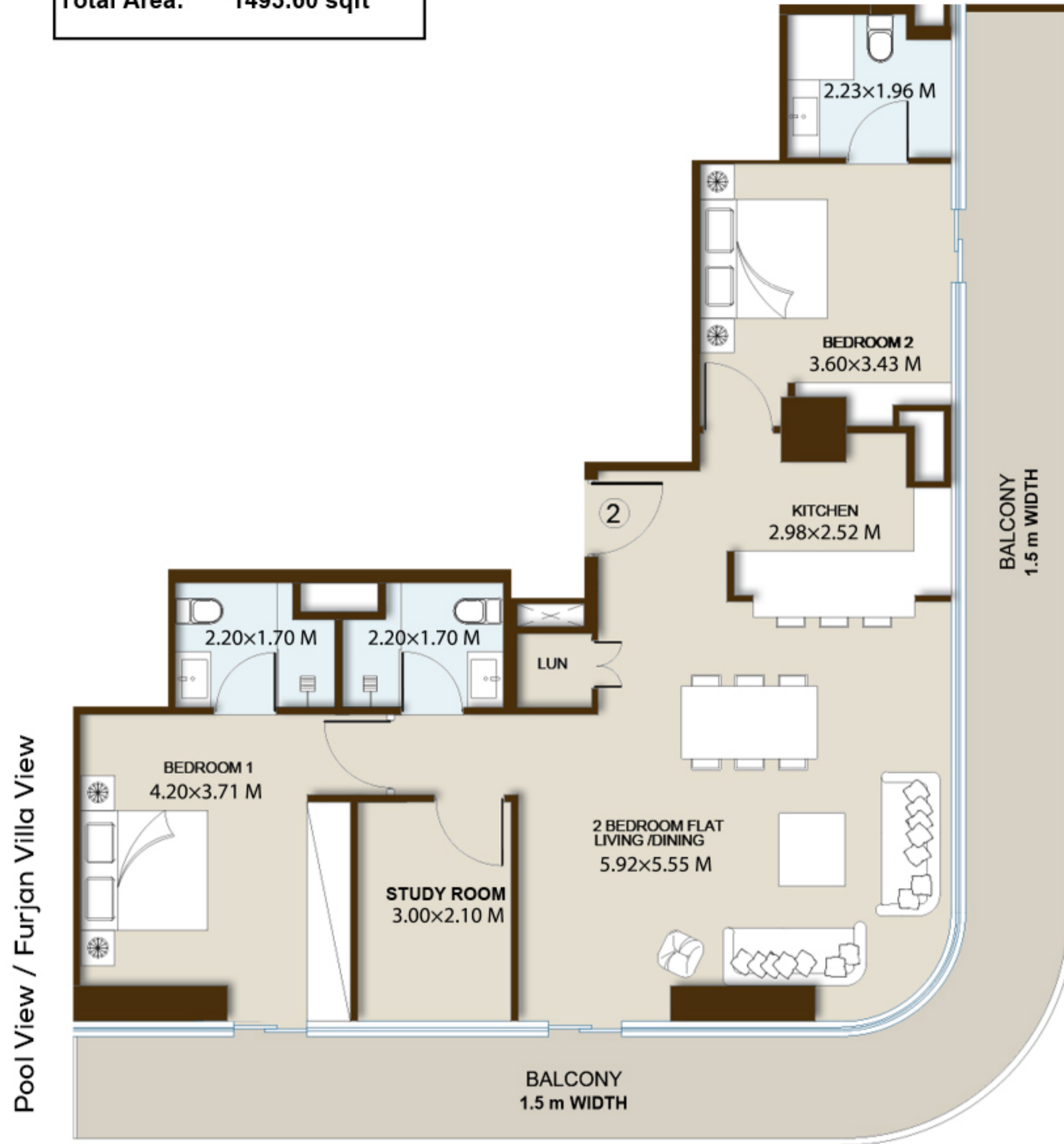
TYPE 01

DISCLAIMER: Drawings are provided by our consultants. All dimensions, features and amenities are approximate at time of printing. Actual area may vary from stated area. The developer reserves the right to make revisions to the Floorplans and any features, materials and dimensions mentioned without further notice.

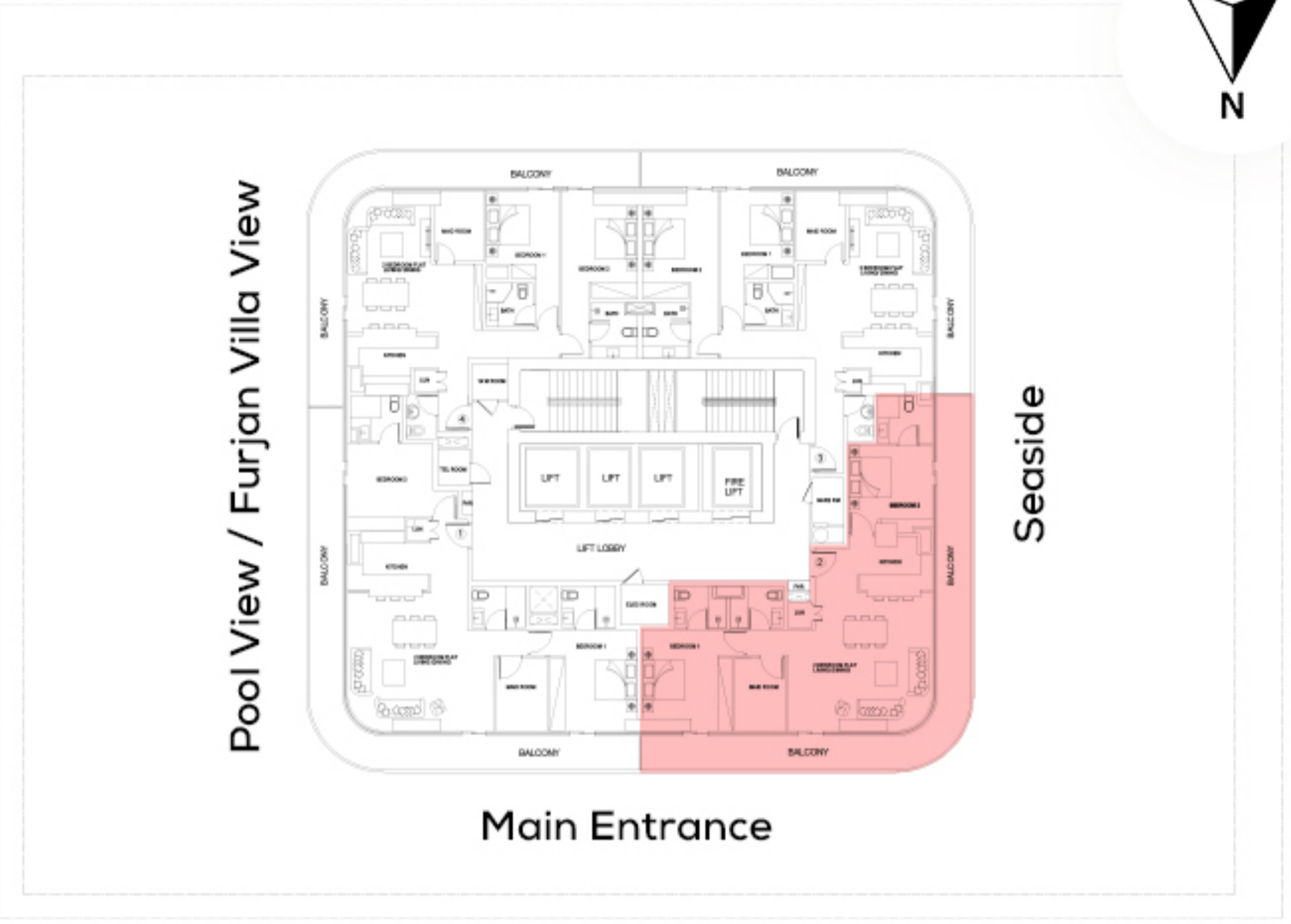
Suite Area: 1057.55 sqft

Balcony Area: 436.05 sqft

Total Area: 1493.60 sqft



Main Entrance



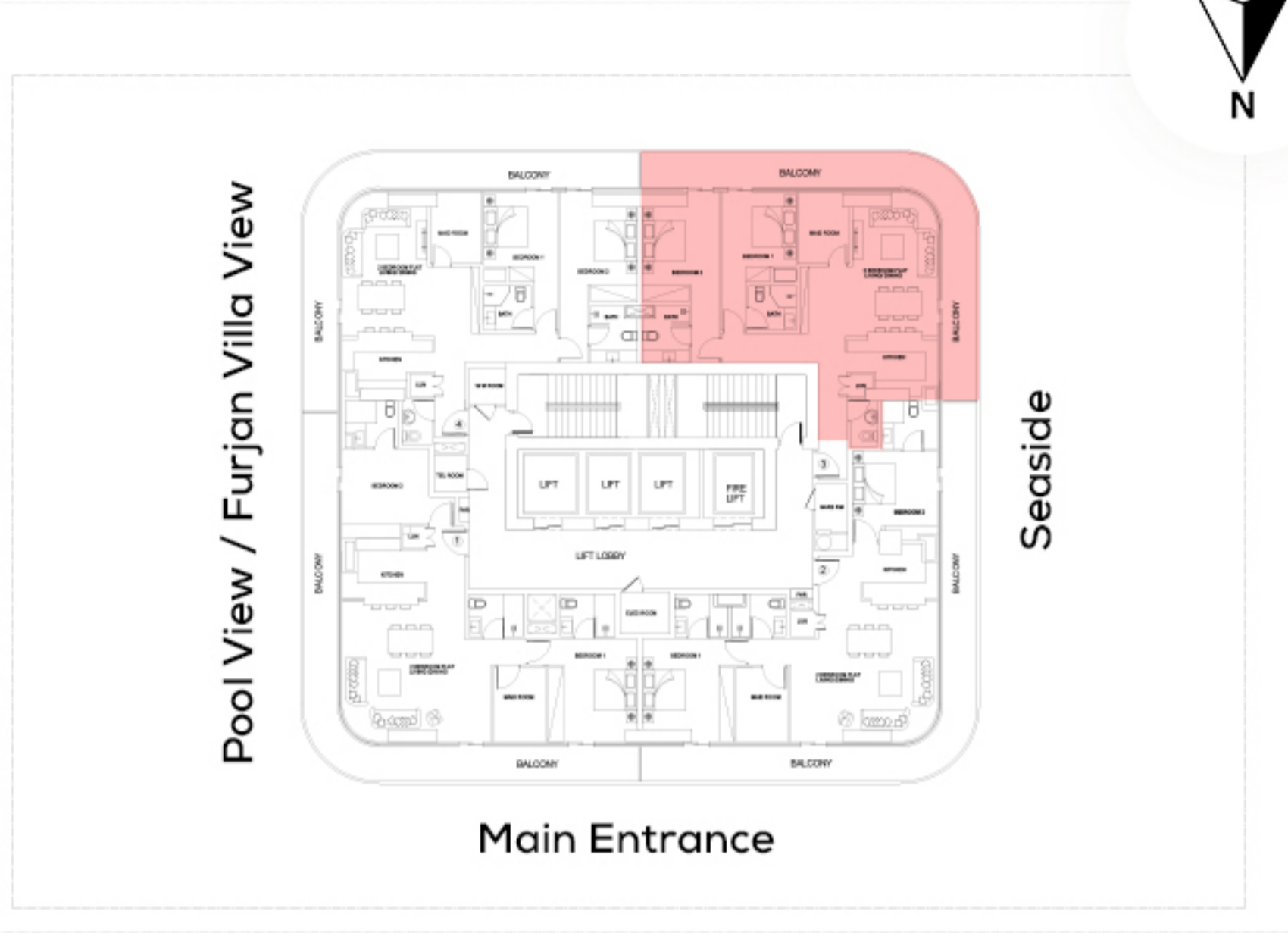
TYPE 02

DISCLAIMER: Drawings are provided by our consultants. All dimensions, features and amenities are approximate at time of printing. Actual area may vary from stated area. The developer reserves the right to make revisions to the floorplans and any features, materials and dimensions mentioned without further notice.

Suite Area: 1072.30 sqft
Balcony Area: 360.91 sqft
Total Area: 1433.21 sqft



Seaside



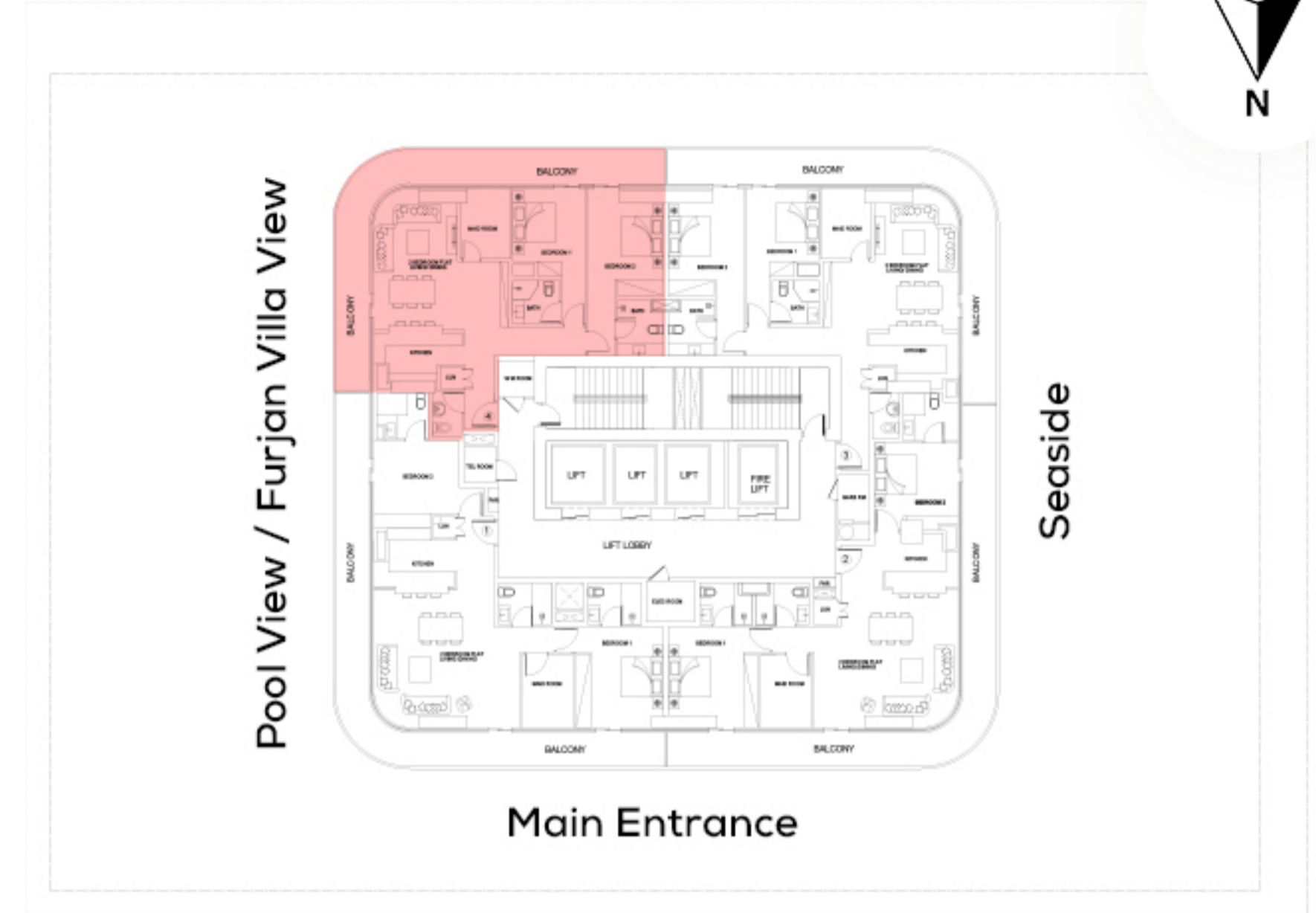
TYPE 03

DISCLAIMER: Drawings are provided by our consultants. All dimensions, features and amenities are approximate at time of printing. Actual area may vary from stated area. The developer reserves the right to make revisions to the Floorplans and any features, materials and dimensions mentioned without further notice.

Suite Area: 1033.77 sqft

Balcony Area: 362.53 sqft

Total Area: 1396.29 sqft



TYPE 04