

# FLOOR Plans



# FASHIONZ

◇ fashiontv

by **DANUBE**

Dubai's First FashionTV  
Branded Residences











fashionZ

**DANUBE  
PROPERTIES**

f

f

f

f

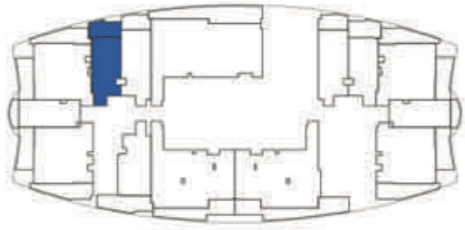
f

f

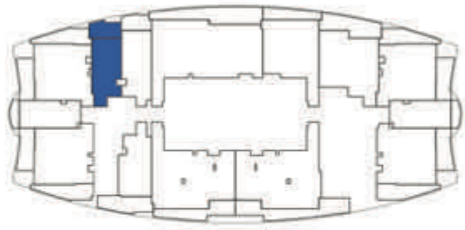




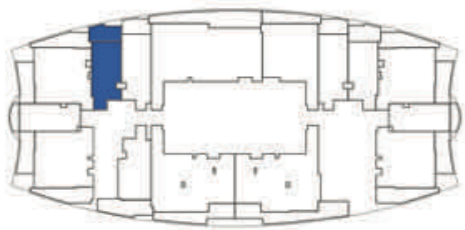
FLOOR : 21 & 47 (Typ)



FLOOR : 22 - 24 (Typ)



FLOOR : 25 - 45 & 48 - 56 (Typ)



SITE PLAN



# PRESIDENTIAL STUDIO - A

## AREA in Sq.Ft :

Apartment	336 to 337
Balcony	95 to 97
<b>Total</b>	<b>431 to 433</b>

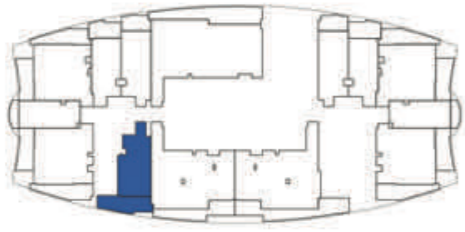
## UNITS :

FLOOR	UNIT Nos
21 & 47 (Typ)	(2108) & (4708)
22 - 24 (Typ)	(2208) to (2408)
25 - 45 & 48 - 56 (Typ)	(2509) to (4509) & (4809) to (5609)

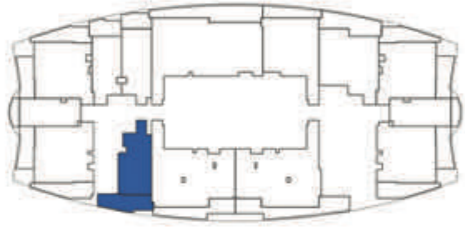
FEATURES :  Pool



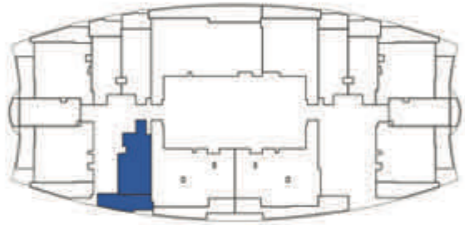
FLOOR : 21 & 47 (Typ)



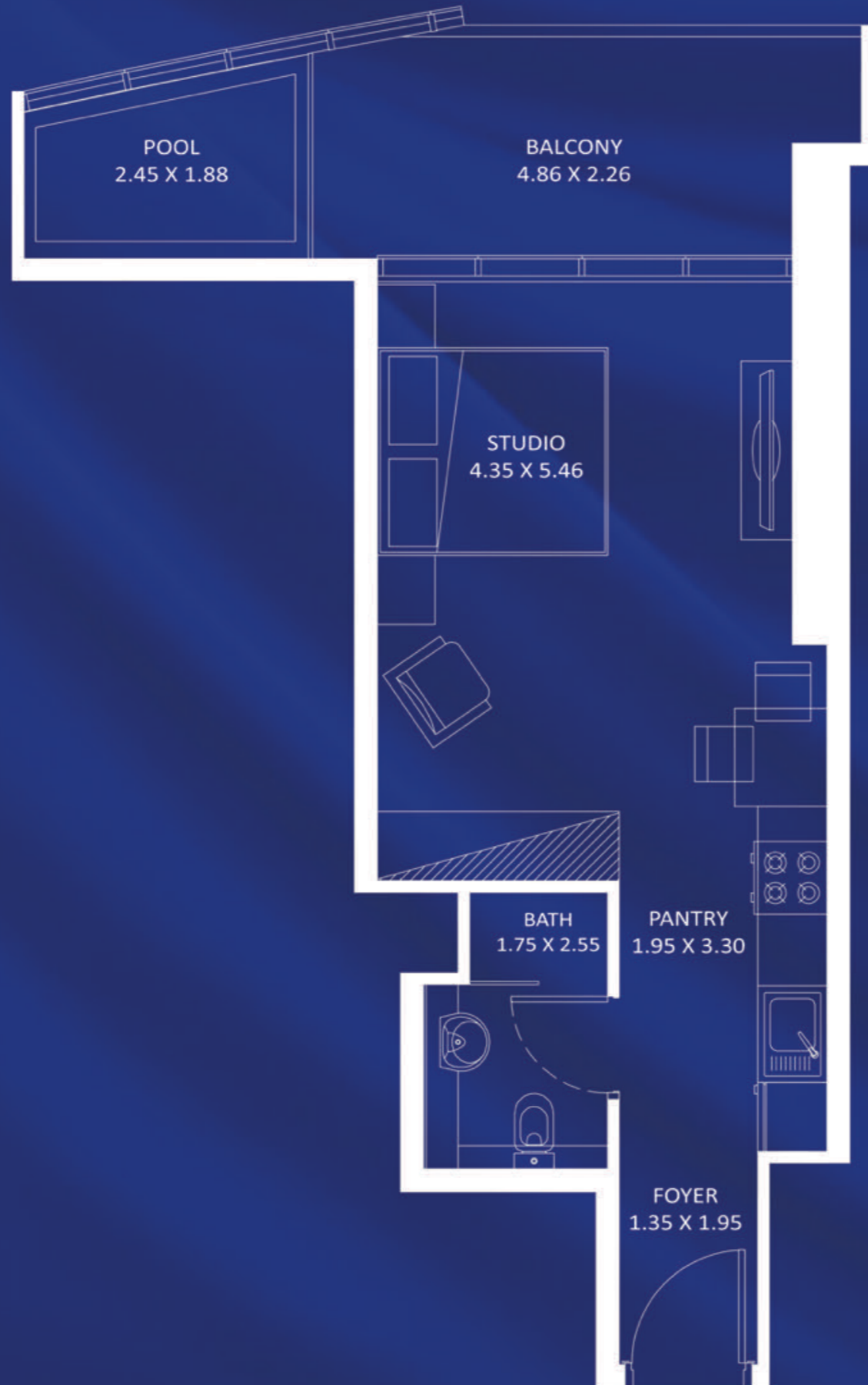
FLOOR : 22 - 24 (Typ)



FLOOR : 25 - 45 & 48 - 56 (Typ)



SITE PLAN



# PRESIDENTIAL STUDIO - B

## AREA in Sq.Ft :

Apartment	375 to 376
Balcony	153
<b>Total</b>	<b>528 to 529</b>

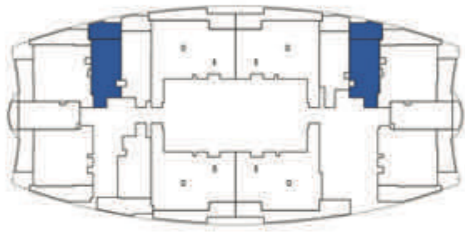
## UNITS :

FLOOR	UNIT Nos
21 & 47 (Typ)	(2112) & (4712)
22 - 24 (Typ)	(2212) to (2412)
25 - 45 & 48 - 56 (Typ)	(2513) to (4513) & (4813) to (5613)

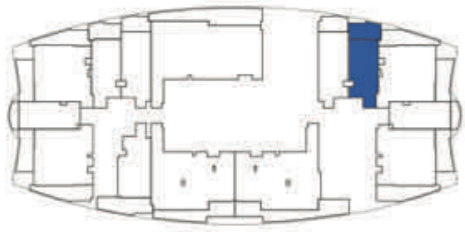
FEATURES :  Pool



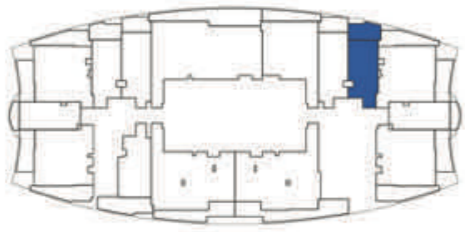
FLOOR : 2 - 19 (Typ)



FLOOR : 21 & 47 (Typ)



FLOOR : 25 - 45 & 48 - 56 (Typ)



SITE PLAN



# STUDIO TYPE - A

## AREA in Sq.Ft :

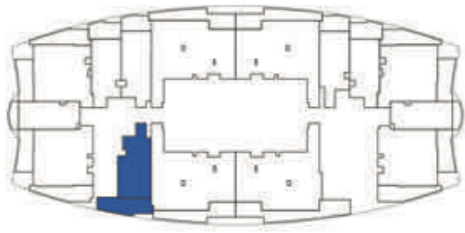
Apartment	335 to 336
Balcony	97 to 99
<b>Total</b>	<b>433 to 434</b>

## UNITS :

FLOOR	UNIT Nos
2 - 19 (Typ)	(204) (209) to (1904) (1909)
21 & 47 (Typ)	(2104) & (4704)
25 - 45 & 48 - 56 (Typ)	(2504) to (4504) & (4804) to (5604)



FLOOR : 2 - 19 (Typ)



## STUDIO TYPE - B

### AREA in Sq.Ft :

Apartment	376
Balcony	153
<b>Total</b>	<b>529</b>

### UNITS :

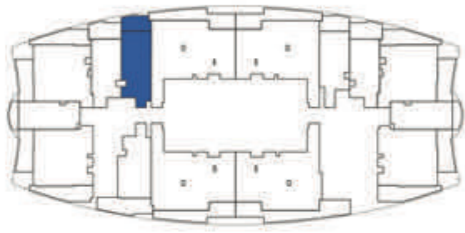
FLOOR	UNIT Nos
2 - 19 (Typ)	(213) to (1913)

### SITE PLAN

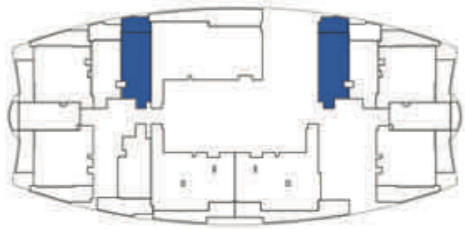




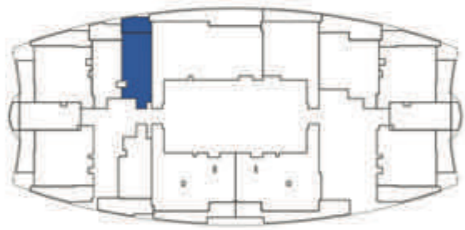
FLOOR : 2 - 19 (Typ)



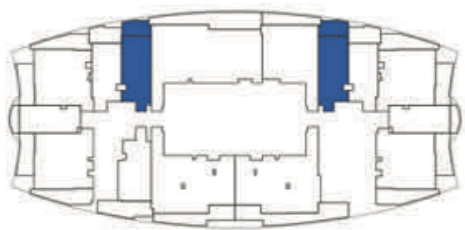
FLOOR : 21 & 47 (Typ)



FLOOR : 22 - 24 (Typ)



FLOOR : 25 - 45 & 48 - 56 (Typ)



SITE PLAN



## EXECUTIVE STUDIO - C

### AREA in Sq.Ft :

Apartment	377 to 378
Balcony	80 to 82
<b>Total</b>	<b>457 to 460</b>

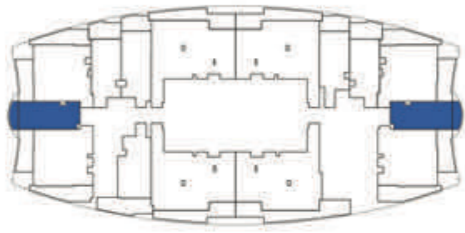
### UNITS:

FLOOR	UNIT Nos
2 - 19 (Typ)	(208) to (1908)
21 & 47 (Typ)	(2105) (2107) & (4705) (4707)
22 - 24 (Typ)	(2207) to (2407)
25 - 45 & 48 - 56 (Typ)	(2505) (2508) to (4505) (4508) & (4805) (4808) to (5605) (5608)

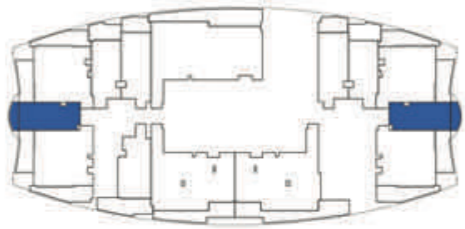
FEATURES :  Convertible 1 BHK



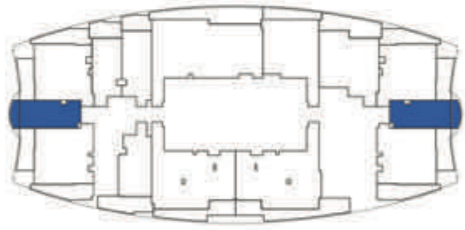
FLOOR : 2 - 19 (Typ)



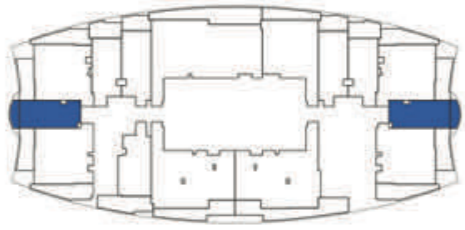
FLOOR : 21 & 47 (Typ)



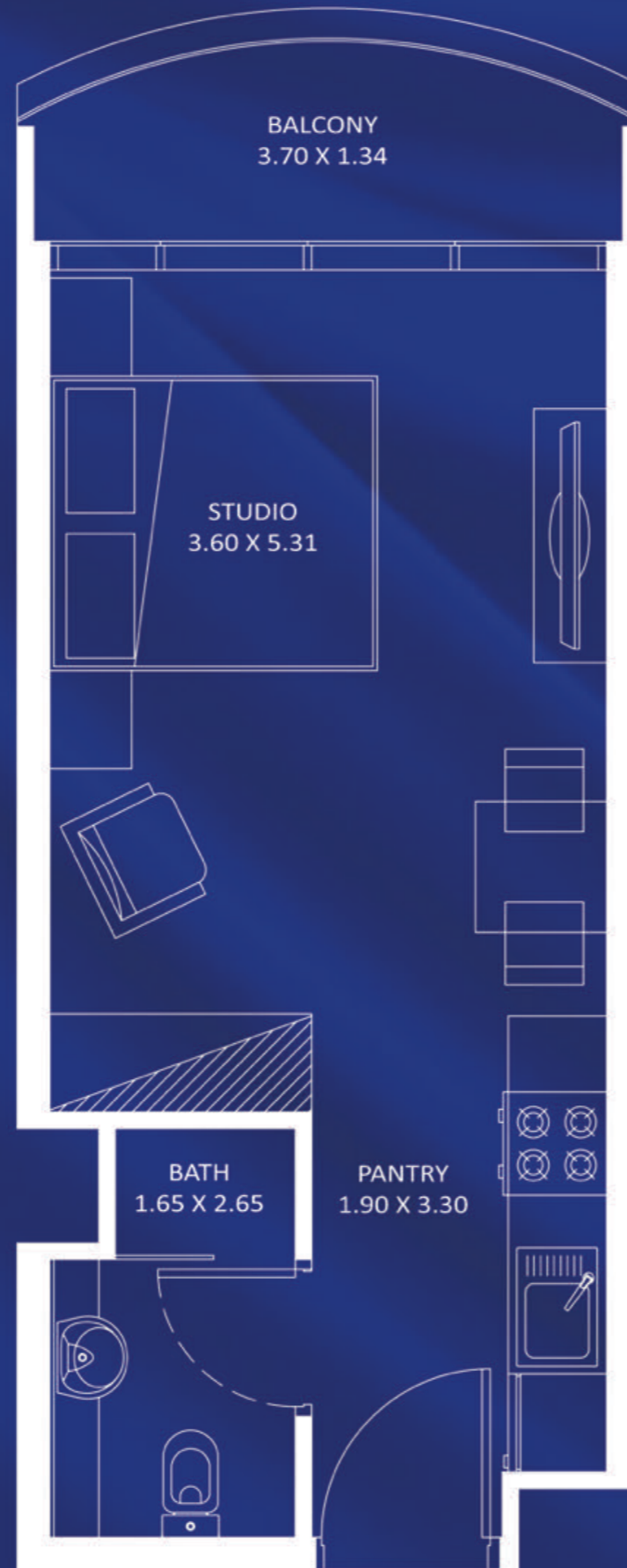
FLOOR : 22 - 24 (Typ)



FLOOR : 25 - 45 & 48 - 56 (Typ)



SITE PLAN



# STUDIO TYPE - D

## AREA in Sq.Ft :

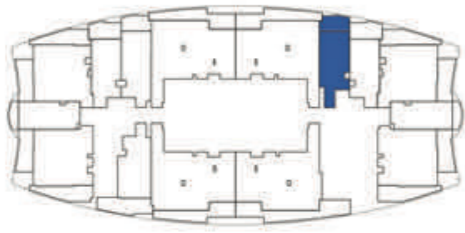
Apartment	303
Balcony	44
<b>Total</b>	<b>347</b>

## UNITS :

FLOOR	UNIT Nos
2 - 19 (Typ)	(202) (211) to (1902) (1911)
21 & 47 (Typ)	(2102) (2110) & (4702) (4710)
22 - 24 (Typ)	(2202) (2210) to (2402) (2410)
25 - 45 & 48 - 56 (Typ)	(2502) (2511) to (4502) (4511) & (4802) (4811) to (5602) (5611)



FLOOR : 2 - 19 (Typ)



# STUDIO TYPE - E

AREA in Sq.Ft :	
Apartment	344
Balcony	81
<b>Total</b>	<b>425</b>

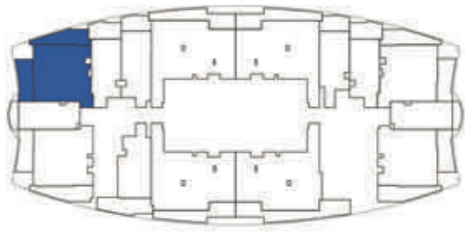
UNITS :	
FLOOR	UNIT Nos
2 - 19 (Typ)	(205) to (1905)

SITE PLAN

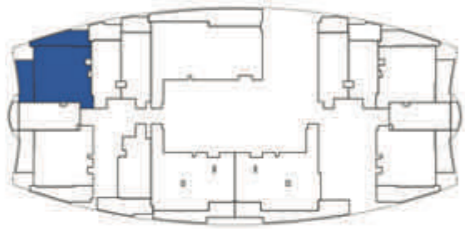




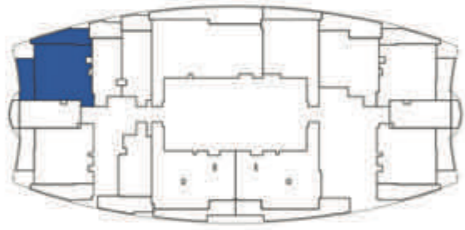
FLOOR : 2 - 19 (Typ)



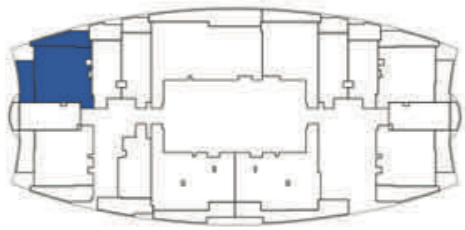
FLOOR : 21 & 47 (Typ)



FLOOR : 22 - 24 (Typ)



FLOOR : 25 - 45 & 48 - 56 (Typ)



SITE PLAN



# PRESIDENTIAL SUITE

## AREA in Sq.Ft :

Apartment	596
Balcony	250 to 252
<b>Total</b>	<b>846 to 848</b>

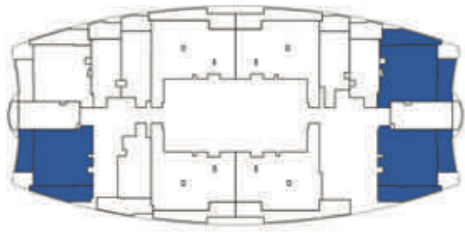
## UNITS:

FLOOR	UNIT Nos
2 - 19 (Typ)	(210) to (1910)
21 & 47 (Typ)	(2109) & (4709)
22 - 24 (Typ)	(2209) to (2409)
25 - 45 & 48 - 56 (Typ)	(2510) to (4510) & (4810) to (5610)

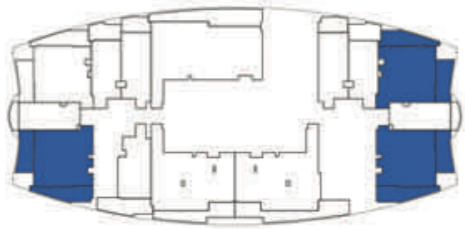
FEATURES :  Pool  Office



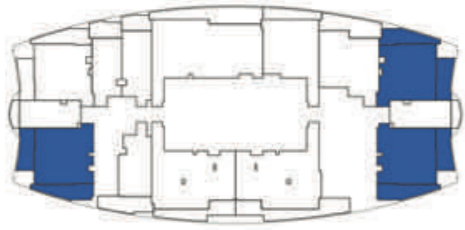
FLOOR : 2 - 19 (Typ)



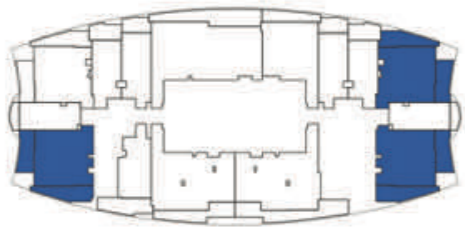
FLOOR : 21 & 47 (Typ)



FLOOR : 22 - 24 (Typ)



FLOOR : 25 - 45 & 48 - 56 (Typ)



SITE PLAN



# 1 BEDROOM TYPE - A

## AREA in Sq.Ft :

Apartment	596 to 610
Balcony	253 to 264
<b>Total</b>	<b>849 to 873</b>

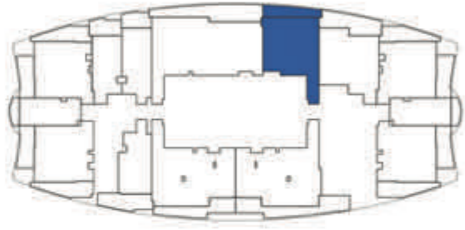
## UNITS:

FLOOR	UNIT Nos
2 - 19 (Typ)	(201) (203) (212) to (1901) (1903) (1912)
21 & 47 (Typ)	(2101) (2103) (2111) & (4701) (4703) (4711)
22 - 24 (Typ)	(2201) (2203) (2211) to (2401) (2403) (2411)
25 - 45 & 48 - 56 (Typ)	(2501) (2503) (2512) to (4501) (4503) (4512) & (4801) (4803) (4812) to (5601) (5603) (5612)

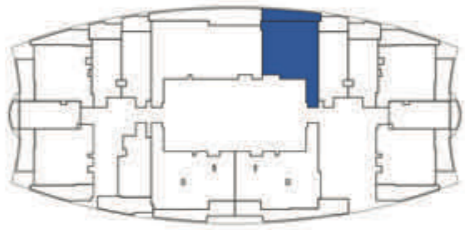
FEATURES :  Office



FLOOR : 22 - 24 (Typ)



FLOOR : 25 - 45 & 48 - 56 (Typ)



# 1 BEDROOM TYPE - B

## AREA in Sq.Ft :

Apartment	647 to 649
Balcony	110 to 112
<b>Total</b>	<b>759</b>

## UNITS:

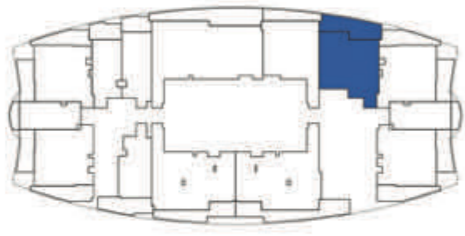
FLOOR	UNIT Nos
22 - 24 (Typ)	(2205) to (2405)
25 - 45 & 48 - 56 (Typ)	(2506) to (4506) & (4806) to (5606)

### SITE PLAN





FLOOR : 22 - 24 (Typ)



# 1 BEDROOM TYPE - C

AREA in Sq.Ft :	
Apartment	654
Balcony	193
<b>Total</b>	<b>847</b>

UNITS:	
FLOOR	UNIT Nos
22 - 24 (Typ)	(2204) to (2404)

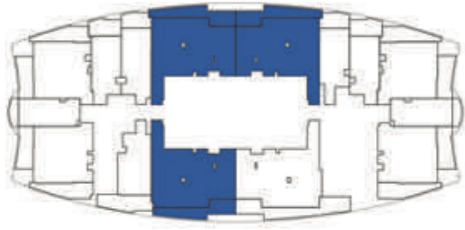
FEATURES :  Pool

## SITE PLAN





FLOOR : 2 - 19 (Typ)



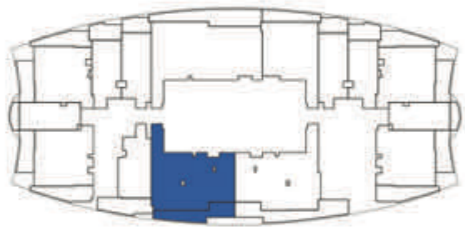
FLOOR : 21 & 47 (Typ)



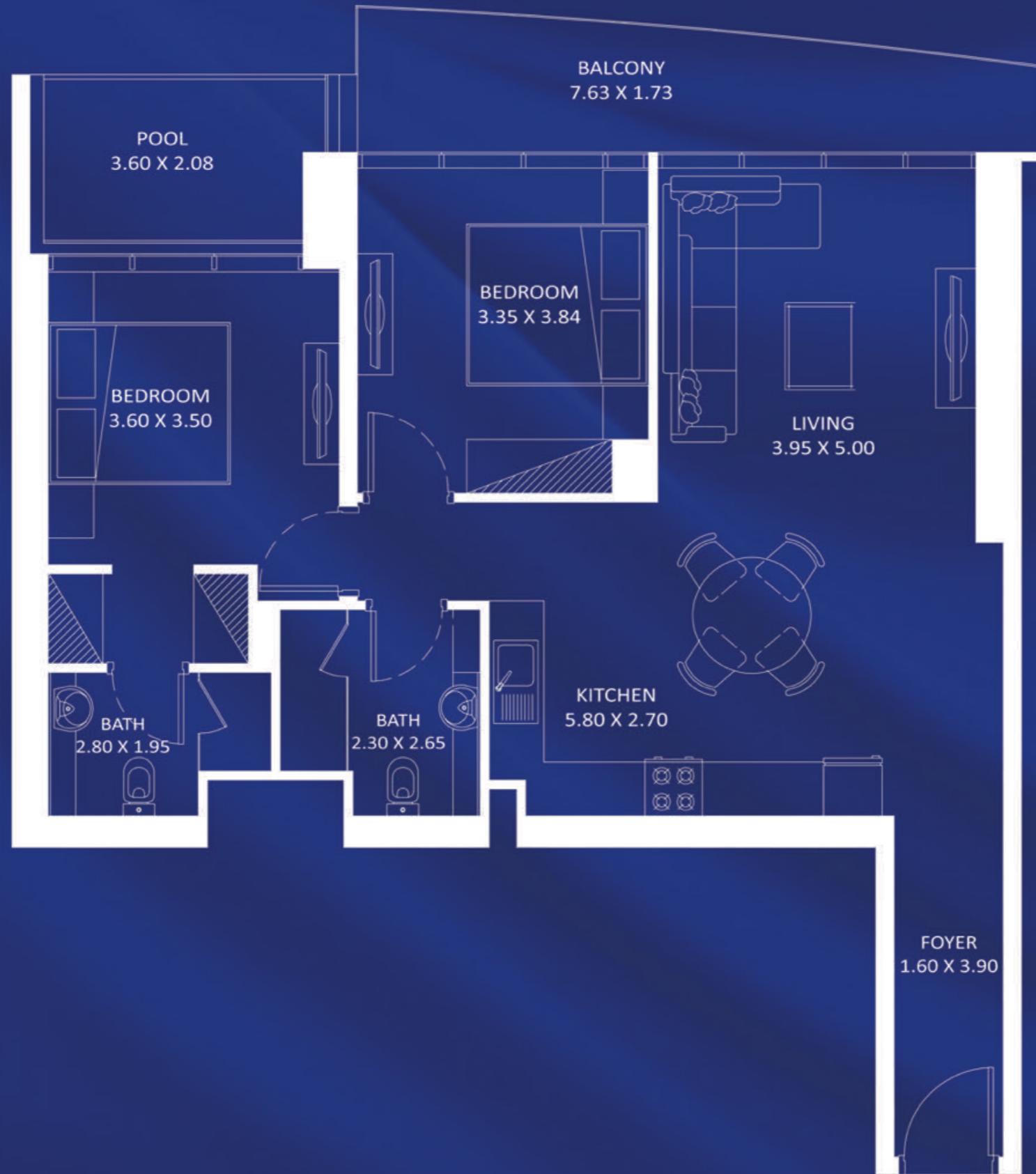
FLOOR : 22 - 24 (Typ)



FLOOR : 25 - 45 & 48 - 56 (Typ)



SITE PLAN



## 2 BEDROOM TYPE - A

### AREA in Sq.Ft :

Apartment	891 to 894
Balcony	177 to 186
<b>Total</b>	<b>1,070 to 1,078</b>

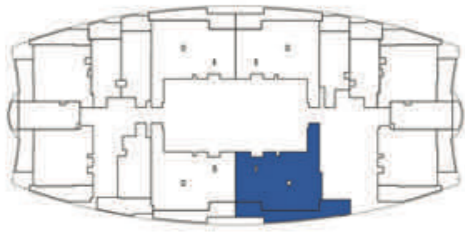
### UNITS:

FLOOR	UNIT Nos
2 - 19 (Typ)	(206 - 207) (214) to (1906 - 1907) (1914)
21 & 47 (Typ)	(2113) & (4713)
22 - 24 (Typ)	(2213) to (2413)
25 - 45 & 48 - 56 (Typ)	(2514) to (4514) & (4814) to (5614)

FEATURES :  Pool



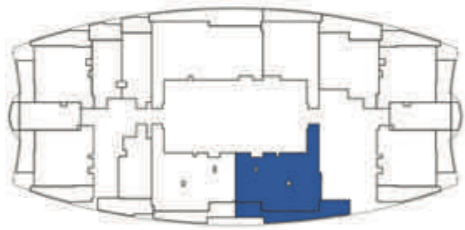
FLOOR : 2 - 19 (Typ)



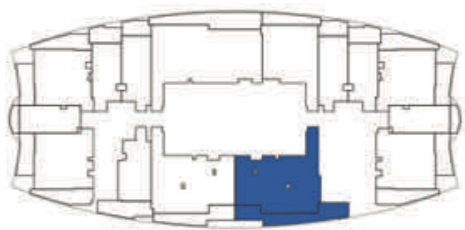
FLOOR : 21 & 47 (Typ)



FLOOR : 22 - 24 (Typ)



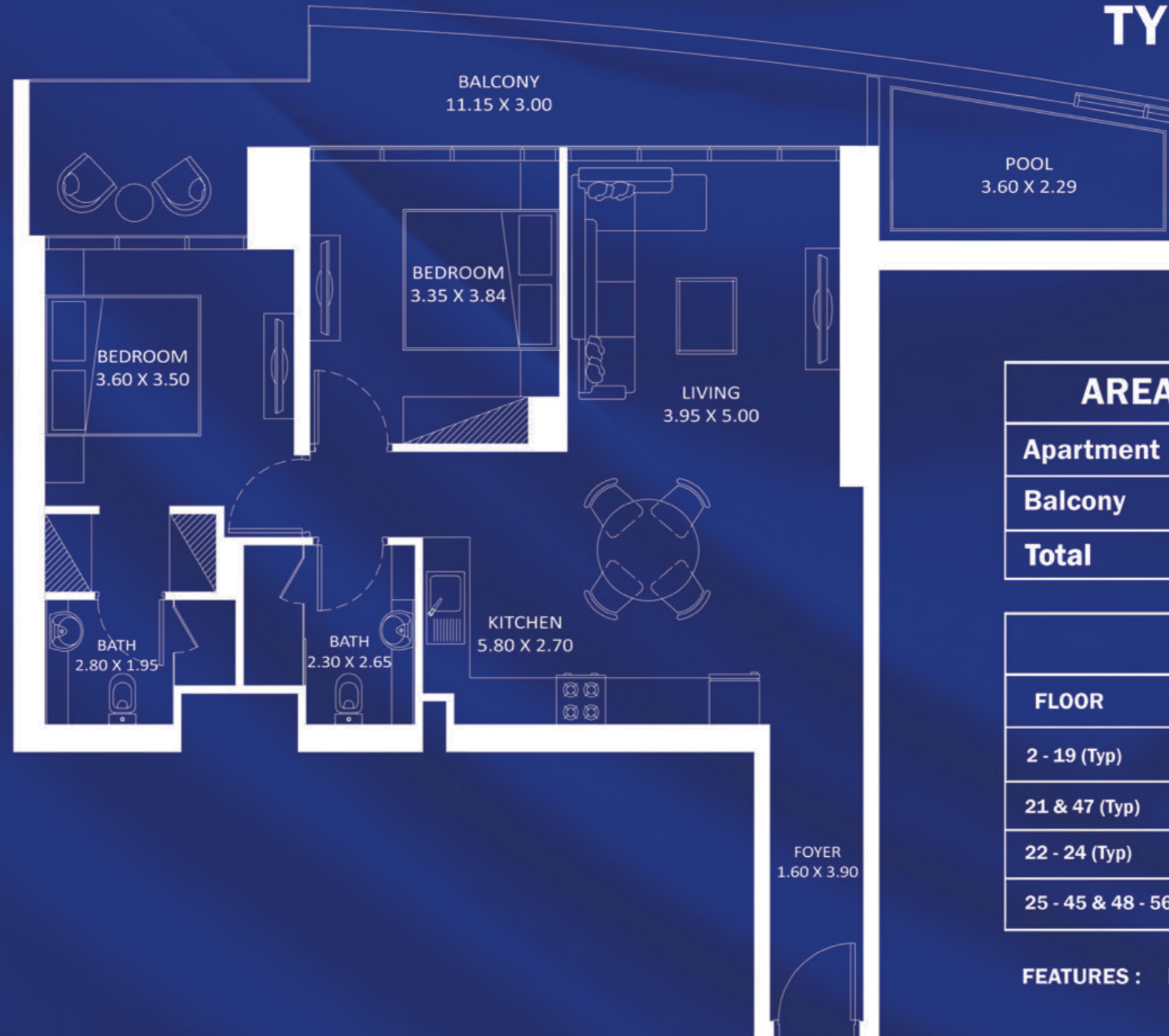
FLOOR : 25 - 45 & 48 - 56 (Typ)



SITE PLAN



# 2 BEDROOM TYPE - B



### AREA in Sq.Ft :

Apartment	902 to 907
Balcony	271 to 274
<b>Total</b>	<b>1,176 to 1,177</b>

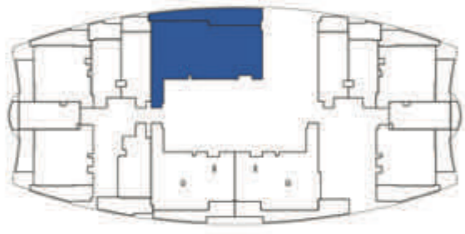
### UNITS:

FLOOR	UNIT Nos
2 - 19 (Typ)	(215) to (1915)
21 & 47 (Typ)	(2114) & (4714)
22 - 24 (Typ)	(2214) to (2414)
25 - 45 & 48 - 56 (Typ)	(2515) to (4515) & (4815) to (5615)

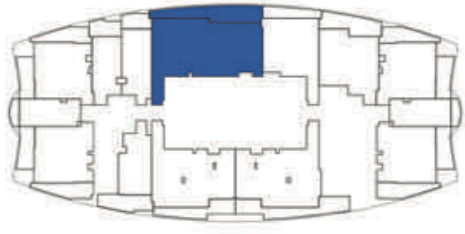
FEATURES :  Pool



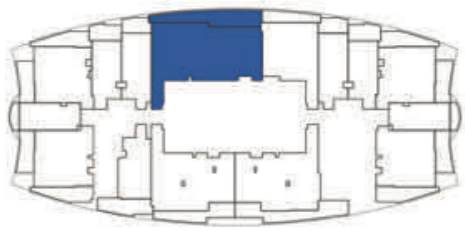
FLOOR : 21 & 47 (Typ)



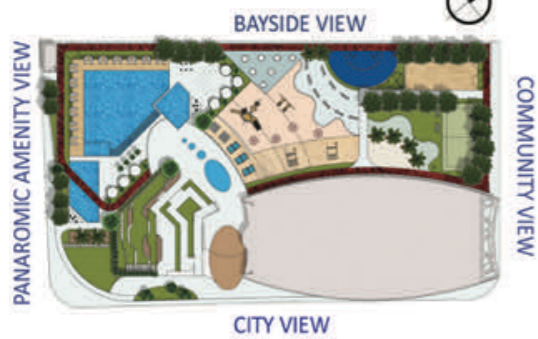
FLOOR : 22 - 24 (Typ)



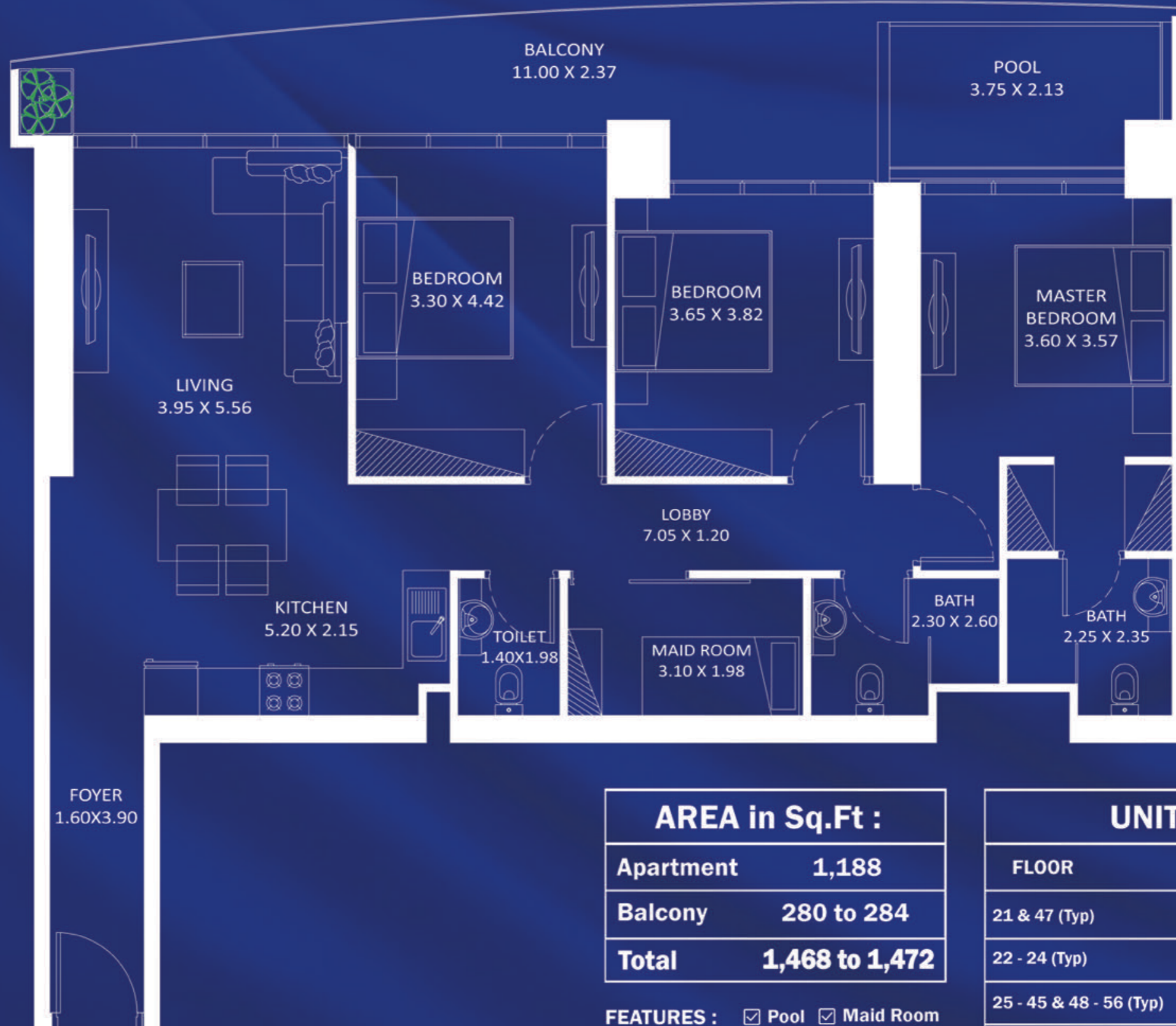
FLOOR : 25 - 45 & 48 - 56 (Typ)



SITE PLAN



# 3 BEDROOM TYPE - A

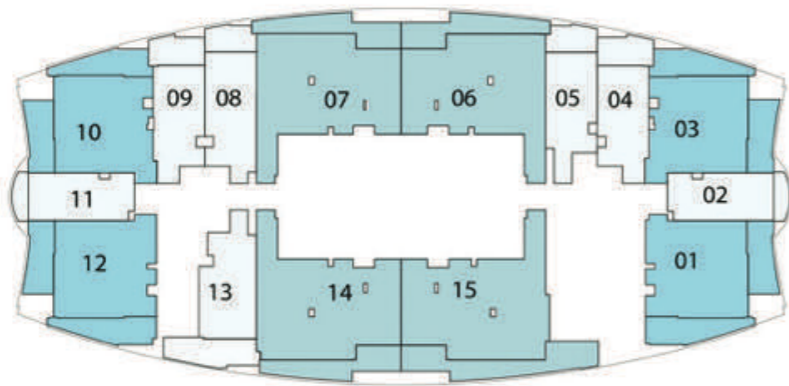


AREA in Sq.Ft :	
Apartment	1,188
Balcony	280 to 284
<b>Total</b>	<b>1,468 to 1,472</b>

UNITS :	
FLOOR	UNIT Nos
21 & 47 (Typ)	(2106) & (4706)
22 - 24 (Typ)	(2206) to (2406)
25 - 45 & 48 - 56 (Typ)	(2507) to (4507) & (4807) to (5607)

FEATURES :  Pool  Maid Room

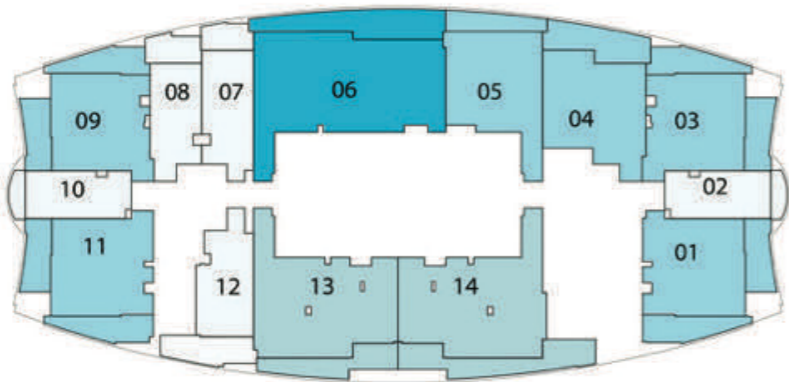




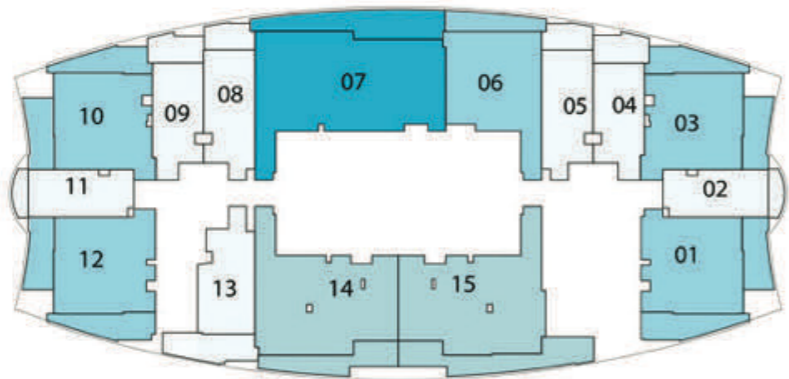
**2- 19 (TYP) FLOOR**



**21 & 47 (TYP) FLOOR**



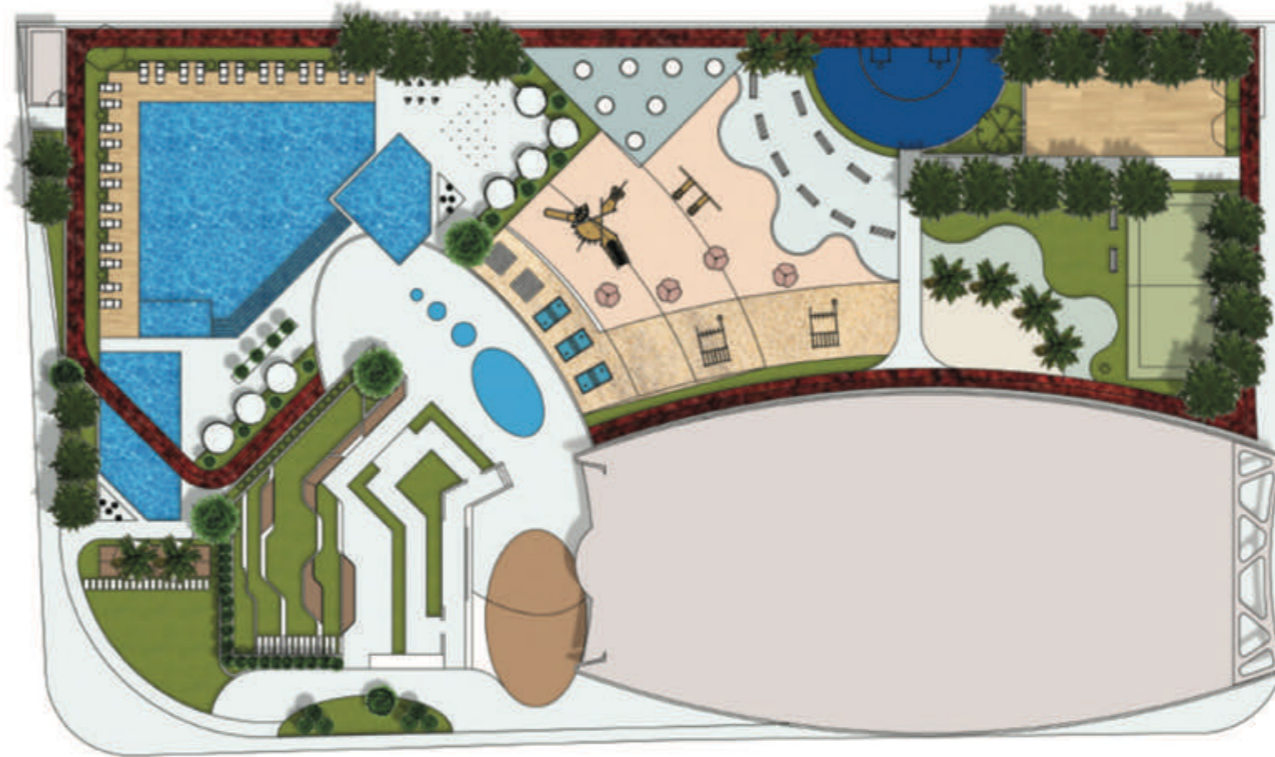
**22 - 24 (TYP) FLOOR**



**25 - 45 & 48 - 56 (TYP) FLOOR**



PANAROMIC AMENITY VIEW



BAYSIDE VIEW

COMMUNITY VIEW

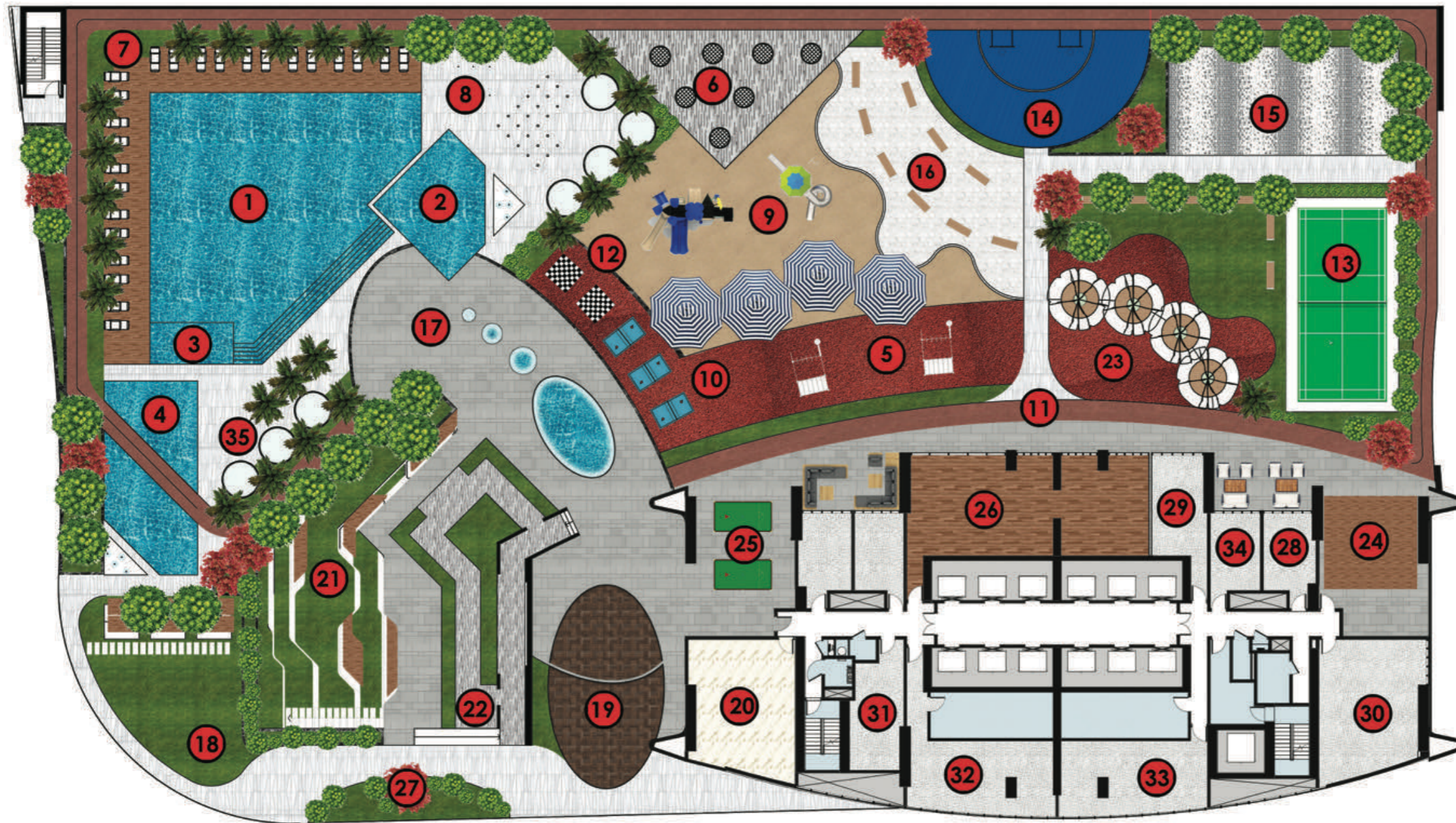
CITY VIEW

- STUDIO
- 1 BEDROOM
- 2 BEDROOM
- 3 BEDROOM



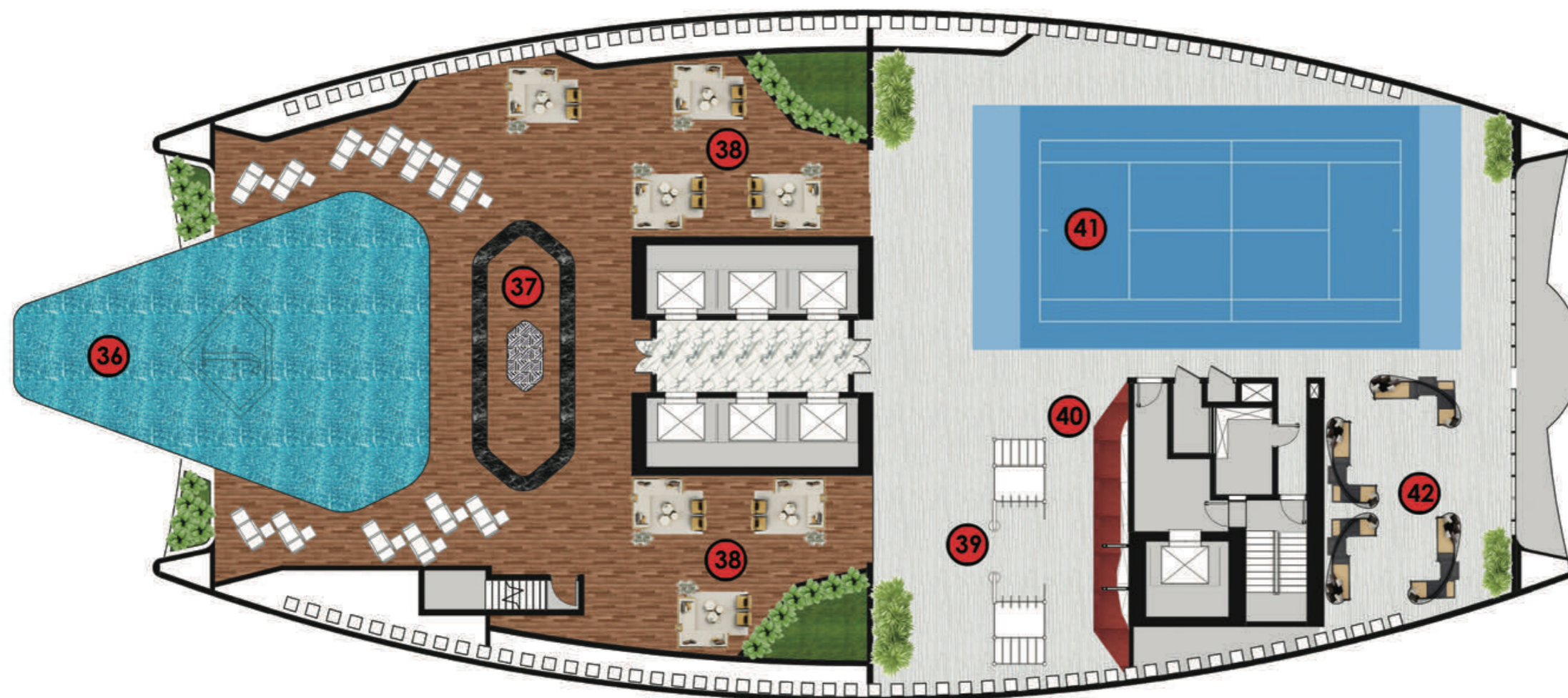
## LEGEND

1. Swimming Pool
2. Kids Pool
3. Jacuzzi
4. Aquatic Gym
5. Outdoor Fashion Gym
6. Trampoline Park
7. Pool Deck
8. Kids Splash Pad
9. Kids Play Area
10. Table Tennis Zone
11. Jogging Track
12. Chess Board Area
13. Badminton Court
14. Multi Purpose Court
15. Skating Park
16. Meditation Zone
17. Fashion Plaza
18. Japanese Garden
19. Outdoor Party Area
20. Party Hall Area
21. Outdoor Cinema
22. Fashion Ramp
23. BBQ Area
24. Zumba & Dance Studio
25. Snooker Zone
26. Fashion Gym
27. Open Cigar Zone
28. Spa & Therapy
29. Doctor on Call
30. Fashion School
31. Kids Day Care
32. Business Center
33. Fashion Library
34. Beauty Parlour
35. Gazebo



## HEALTH CLUB LEVEL





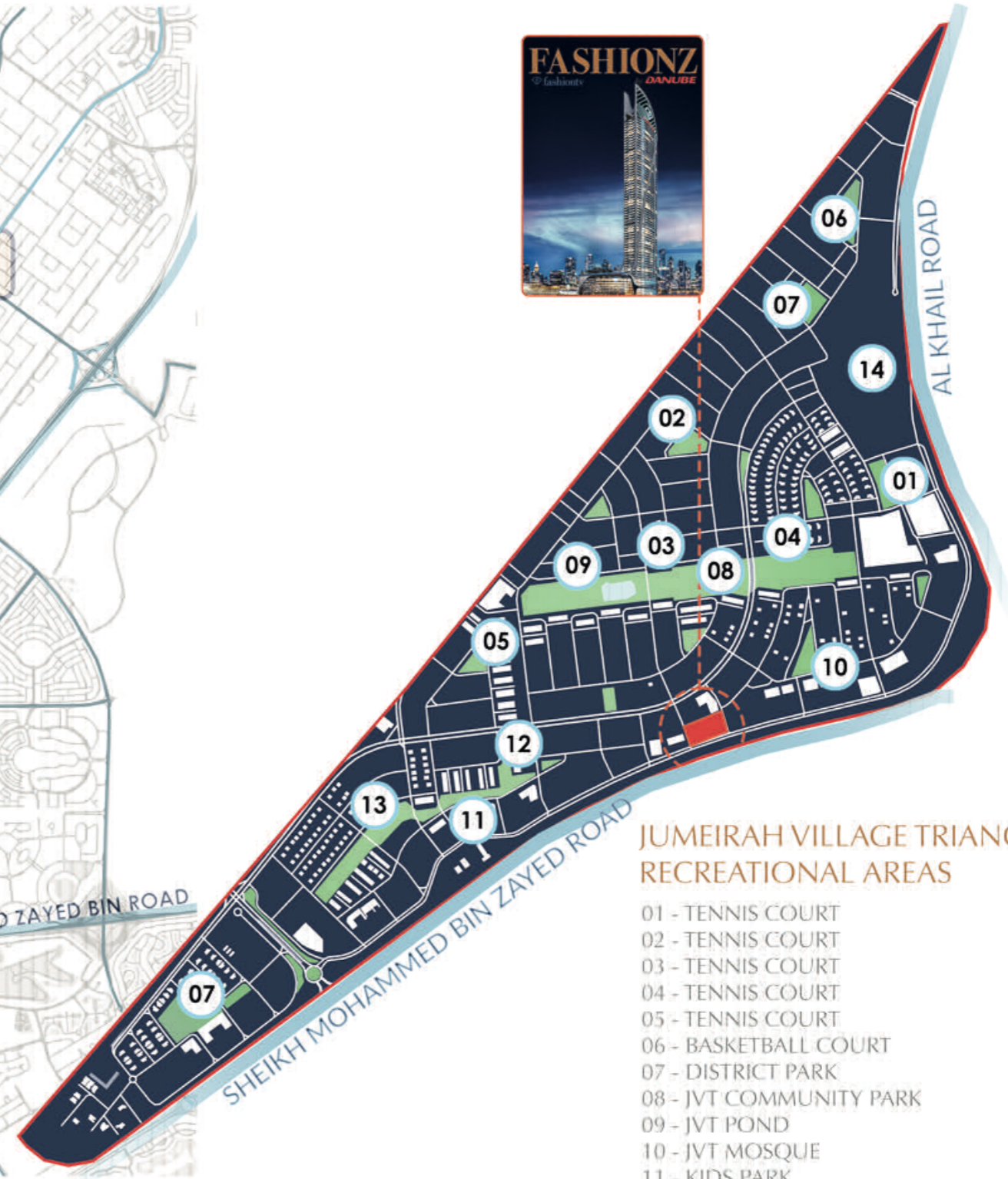
## LEGEND

- 36. Roof Top Infinity Pool
- 37. Health Bar
- 38. Rooftop Lounge
- 39. Outdoor Gym
- 40. Rock Climbing Wall
- 41. Padel Court
- 42. Viewing Deck

# ROOF HEALTH CLUB LEVEL

1. All Information, materials, plans and amenities are approximate and provided for illustrative purposes only. The developer reserves the right to make revisions to the floor plans and any features, materials, dimensions, drawings, and amenities of the project without notice.
2. Units areas, actual dimensions, layout, location, specifications of balcony, door, wardrobe or other fixtures may vary floor to floor and between units and are subject to revision by the developer.
3. Furniture and electric devices will not be provided by the developer, unless specified otherwise in the Unit Sale Purchase Agreement.





**JUMEIRAH VILLAGE TRIANGLE RECREATIONAL AREAS**

- 01 - TENNIS COURT
- 02 - TENNIS COURT
- 03 - TENNIS COURT
- 04 - TENNIS COURT
- 05 - TENNIS COURT
- 06 - BASKETBALL COURT
- 07 - DISTRICT PARK
- 08 - JVT COMMUNITY PARK
- 09 - JVT POND
- 10 - JVT MOSQUE
- 11 - KIDS PARK
- 12 - JVT WATER FOUNTAIN PARK
- 13 - JVT DOG PARK
- 14 - NAKHEEL MALL WITH THEATER

**JVT OVERVIEW**







