



Bizim Evler **10**

**BizimEvler 10**

WHAT YOU EXPECT FROM LIFE IS  
WAITING FOR YOU AT BİZİM EVLER 10.

**ihlas**  
 **Holding**



## MAKING LIFE BEAUTIFUL IS A RESULT OF STABILITY

With its 32 years of experience, İhlas Holding, which has produced more than 20 thousand residential units and made hundreds of thousands of families homeowners, has achieved an unprecedented success with its 10th project under the brand of Bizim Evler at Ispartakule region...

It continues to be the unchanging address of trust and quality for years based on the family life.







## WE ARE DOING WHAT SUITS US THE BEST; CONTINUING TO PRODUCE QUALITY

The privileges of Bizim Evler 10 begin with its view; you are living happy dreams with your loved ones accompanied by Küçükçekmece Lake. You feel the purest form of peace with the fresh air of wide green areas. You live your life with the rightful pride of making the right decision for your future in your comfortable residence with high investment value, where quality is noticed at every point.





## IT STARTS WITH BİZİM EVLER AND CONTINUES WITH YOUR HAPPINESS

In our specially designed residents' comfortable living areas which all your needs are considered, you will share unique happiness with your family and you will experience a spacious area where you meet all your needs in the large and functional balconies planned as two in our 3+1 and 4+1 residences and one in our 2+1 residences.

You will feel that you are in Bizim Evler, with rich 4+1, 3+1 and 2+1 residence options in 6 blocks that are planned for you to make maximum use of daylight, the beauties that the landscape areas and lake view add to your life, and the interior spaces made of high quality materials.





## THE MOST PROFITABLE LOCATION OF ISTANBUL

In Ispartakule, which is one of the regions with the highest investment value in Istanbul, privileges surrounded by transportation opportunities, away from the crowd and chaos of the city, are waiting for you.

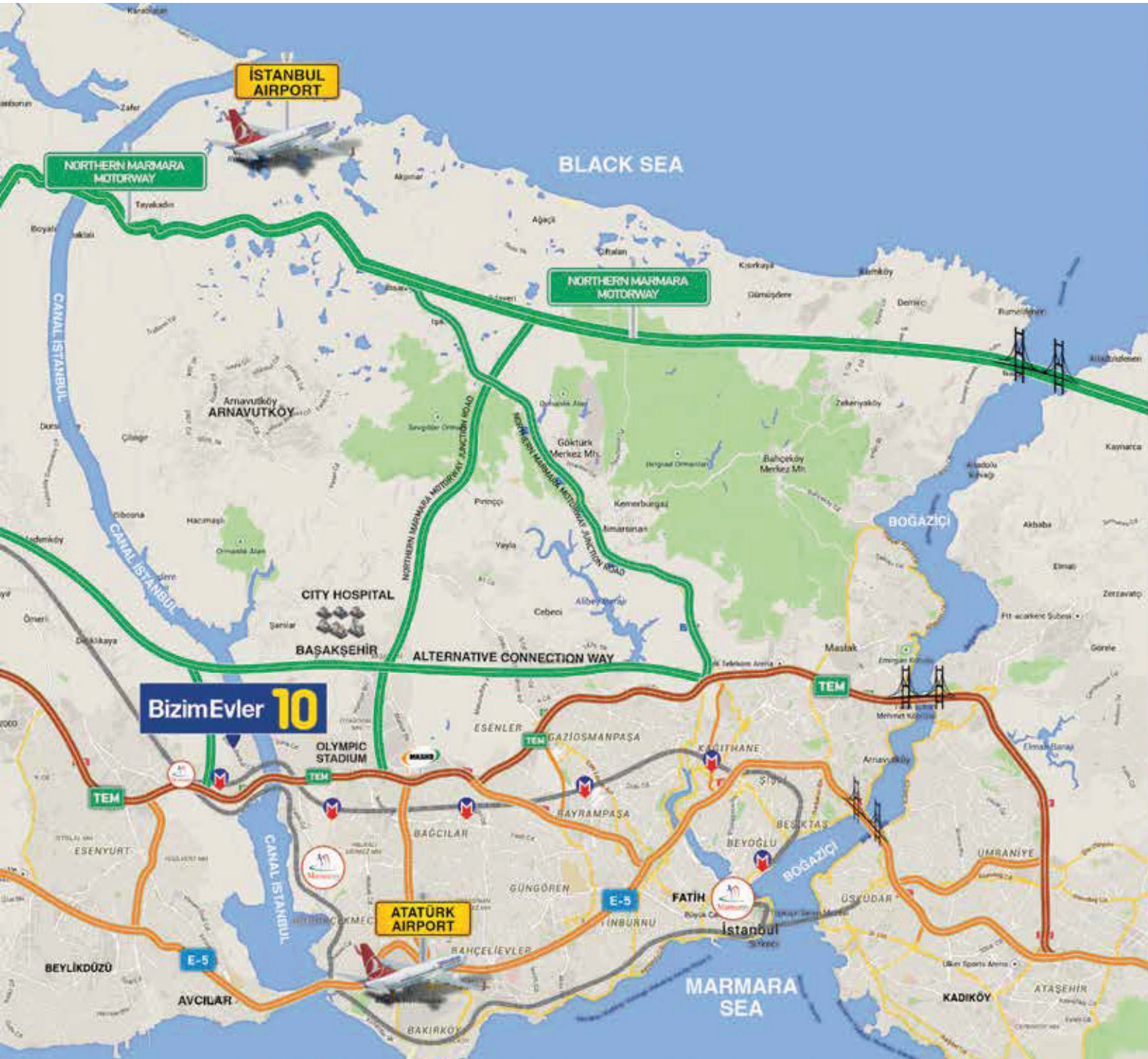
Ispartakule, with its social facilities, mega projects and life that increases its value every day, brings you together at Bizim Evler 10.

You will open the doors of a profitable future right next to the planned Canal Istanbul project.









## BİZİM EVLER'S PRIVILEGE STARTS ON THE ROAD

Bizim Evler 10, located 3 minutes from TEM Motorway Ispartakule Toll Booths, next to Bahçeşehir-Halkalı Marmaray Train Line and Mahmutbey-Bahçeşehir-Esenyurt Metro Line, provides easy access to every point of the city with its direct connection to Yavuz Sultan Selim Bridge and Istanbul Airport.



## ALL OF YOUR NEEDS ARE CONSIDERED

The 44 commercial units that Bizim Evler 10 will offer to meet all your needs; will add value to your life with cafes, restaurants, markets and shops. In addition, exterior parking lot specially reserved for commercial units make your life easier.





## PEACEFUL LIFE IS NOW AT BİZİM EVLER 10

Bizim Evler 10, which plans the majority of the project area as green areas, offers you and your loved ones the simplest form of peace with specially designed walking paths, bicycle tracks, gazebos where you can make beautiful memories with your family and friends, and ornamental pools that offer blue dreams in an excellent landscape in an average of 36,600 m<sup>2</sup> area.







## UNIQUE PRIVILEGES OF BİZİM EVLER 10

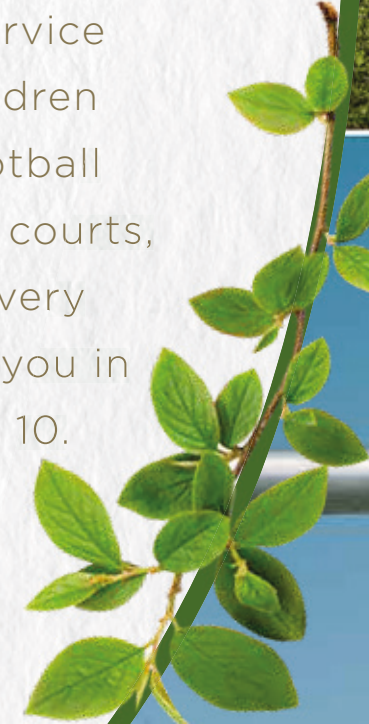
Your life will be restyled with Bizim Evler 10 privileges; you will experience the happiness of doing sports and performing cultural activities with your loved ones in our social facility building. You will be rejuvenated with health in the fitness center organized separately for men and women and Turkish Bath, along with facilities such as billiards, table tennis, multi-purpose indoor gym and indoor swimming pool.





## TEN THOUSANDS OF HAPPY FAMILIES WITH TENS OF YEARS OF EXPERIENCE

Bizim Evler, which brings together tens of thousands of families with their happy dreams, has equipped its landscape areas with activity points for you to have a good time with your loved ones. Offered to the uninterrupted service of our site residents; with 3 children playgrounds, tennis court, 2 football fields, volleyball and basketball courts, the bicycle path spreading to every corner of the landscape awaits you in the unique world of Bizim Evler 10.









## DETAILS THAT MAKE LIFE EASIER

### CAR PARK

For each of our residence, one parking spot will be waiting specially for you. Details that make your life easier will welcome you with specially reserved sections for guest vehicles and electric vehicle charging stations in the parking area.

### SECURITY

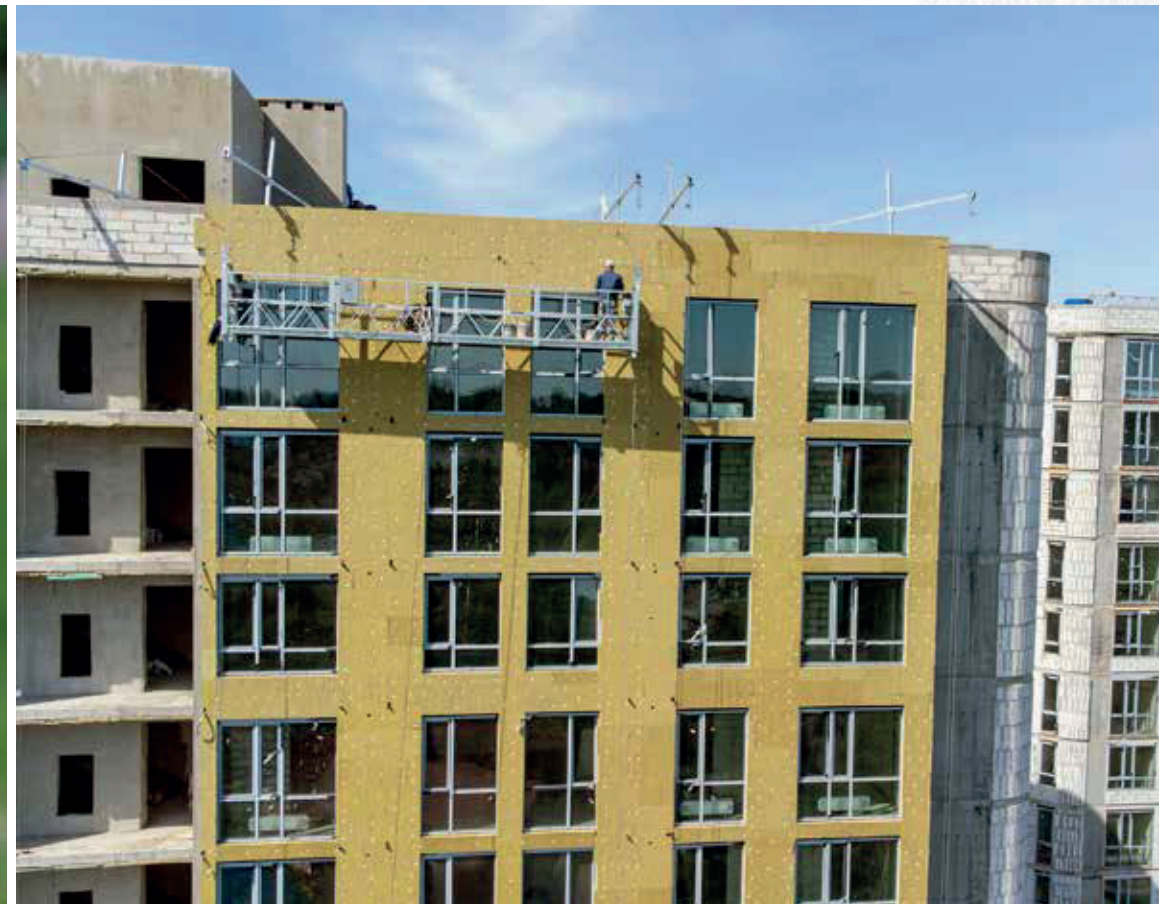
Security service will be provided by Bizim Evler 10's Site Management and 24/7 security camera systems will be actively monitored. While you share happiness with your family, your eyes will never be left behind.

### GENERATOR

With our fully powered generator, electricity backup will be made to cover all parts of apartments, elevators, hydrophores, heating system, common areas, environment and parking lot lighting, shops and social facilities; your energy will never be cut off at Bizim Evler 10.

### INSULATION

High performance in sound and heat insulation will be applied by using first quality materials on exterior facade and windows; solutions that will maintain your peace and happiness at all times will be actively implemented.





## BETTER EVERY TIME WITH THE QUALITY OF BİZİM EVLER

Bizim Evler, which never compromises on quality in workmanship and use of material, and which has been the address of quality and trust since the first project realized in 2007, continues this tradition and culture with its new project.

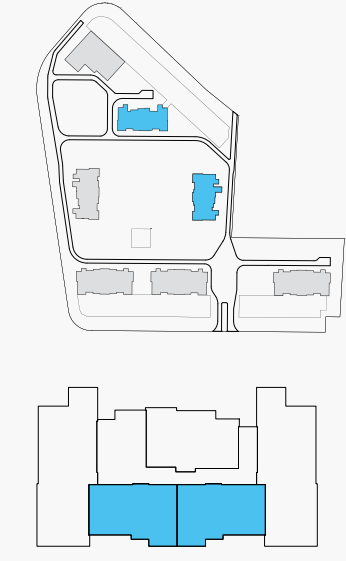




2+1

A1-B1 BLOCK

BizimEvler 10



GROSS AREA OF RESIDENCE FOR SALE: 132.00 m<sup>2</sup>

This plan has been prepared for general informational purposes, and the company has the right to make any changes it deems technically necessary. Space furnishings are shown as examples and may differ according to the block and floor.

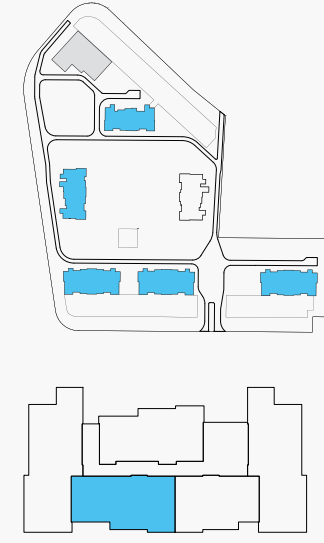


The images and information in this brochure are for informational purposes. The application project is valid for the project's residences' sizes and site lists. The company has the right to make any changes it deems necessary during the implementation phase.

# 3+1

A1 - A2 - C1 - C2 - C3 BLOCK

## BizimEvler 10



**GROSS AREA OF Residence FOR SALE: 169 - 173 m<sup>2</sup>**

This plan has been prepared for general informational purposes, and the company has the right to make any changes it deems technically necessary. Space furnishings are shown as examples and may differ according to the block and floor.

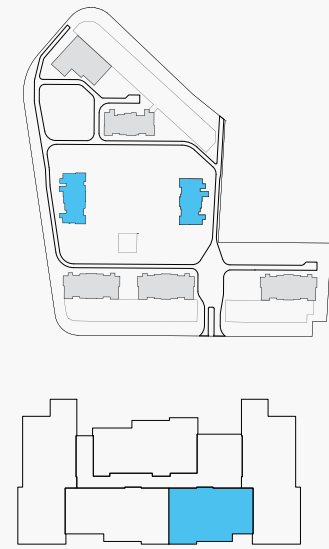


The images and information in this brochure are for informational purposes. The application project is valid for the project's residences' sizes and site lists. The company has the right to make any changes it deems necessary during the implementation phase.

# 3+1 C/D

A2-B1 BLOCK

# BizimEvler 10



GROSS AREA OF RESIDENCE FOR SALE: 141 - 143 m<sup>2</sup>

This plan has been prepared for general informational purposes, and the company has the right to make any changes it deems technically necessary. Space furnishings are shown as examples and may differ according to the block and floor.

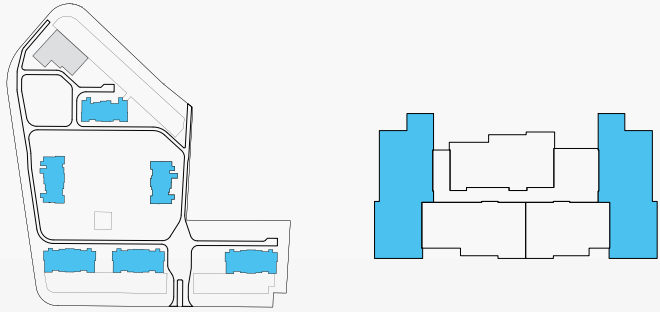


The images and information in this brochure are for informational purposes. The application project is valid for the project's residences' sizes and site lists. The company has the right to make any changes it deems necessary during the implementation phase.

# 4+1

A1-A2-B1-C1-C2-C3 BLOCK

## BizimEvler 10



This plan has been prepared for general informational purposes, and the company has the right to make any changes it deems technically necessary. Space furnishings are shown as examples and may differ according to the block and floor.



The images and information in this brochure are for informational purposes. The application project is valid for the project's residences' sizes and site lists. The company has the right to make any changes it deems necessary during the implementation phase.

