

PALMIERA 3

THE OASIS

FLOOR PLANS

EMAAR

PALMIERA 3

THE OASIS

4 BEDROOM
CLASSIC

GROUND FLOOR	1,878.30	SQ.FT.	174.50	SQ.M.
FIRST FLOOR	1,740.41	SQ.FT.	157.58	SQ.M.
SECOND FLOOR	529.05	SQ.FT.	49.15	SQ.M.
TERRACE	774.46	SQ.FT.	71.95	SQ.M.
CAR PORT AREA	644.43	SQ.FT.	89.87	SQ.M.
DRIVER ROOM AREA	143.16	SQ.FT.	13.30	SQ.M.
TOTAL AREA	5,665.58	SQ.FT.	526.35	SQ.M.



KEY PLAN



GROUND FLOOR



FIRST FLOOR



SECOND FLOOR

FLOOR PLAN 1. All dimensions are in imperial and metric, and measured from finish to finish excluding construction tolerances. 2. All materials, dimensions, and drawings are approximate only. 3. Information is subject to change without notice, at developer's absolute discretion. 4. Actual area may vary from the stated area. 5. Drawings not to scale. 6. All images used are for illustrative purposes only and do not represent the actual size, features, specifications, fittings, and furnishings. 7. The developer reserves the right to make revisions / alterations, at it's absolute discretion, without any liability whatsoever.

PALMIERA 3

THE OASIS

4 BEDROOM
CONTEMPORARY

GROUND FLOOR	1,826.85	SQ.FT.	169.72	SQ.M.
FIRST FLOOR	1,791.22	SQ.FT.	166.41	SQ.M.
SECOND FLOOR	529.05	SQ.FT.	49.15	SQ.M.
TERRACE	951.10	SQ.FT.	88.36	SQ.M.
CAR PORT AREA	643.90	SQ.FT.	59.82	SQ.M.
DRIVER ROOM AREA	143.16	SQ.FT.	13.30	SQ.M.
TOTAL AREA	5,885.27	SQ.FT.	546.76	SQ.M.



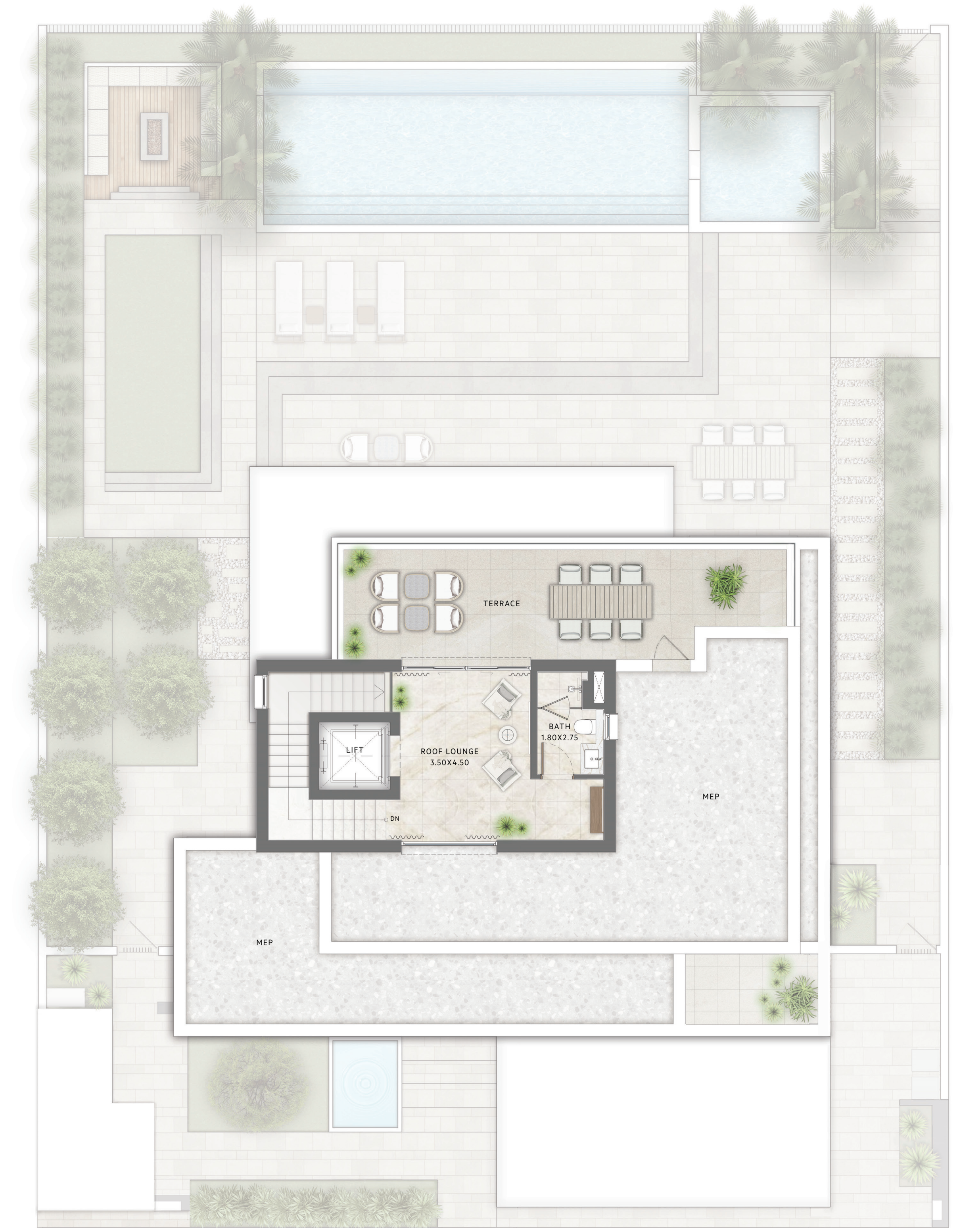
KEY PLAN



GROUND FLOOR



FIRST FLOOR



SECOND FLOOR

FLOOR PLAN 1. All dimensions are in imperial and metric, and measured from finish to finish excluding construction tolerances. 2. All materials, dimensions, and drawings are approximate only. 3. Information is subject to change without notice, at developer's absolute discretion. 4. Actual area may vary from the stated area. 5. Drawings not to scale. 6. All images used are for illustrative purposes only and do not represent the actual size, features, specifications, fittings, and furnishings. 7. The developer reserves the right to make revisions / alterations, at it's absolute discretion, without any liability whatsoever.

PALMIERA 3

THE OASIS

4 BEDROOM
CHAMFER

GROUND FLOOR	1,910.48	SQ.FT.	177.49	SQ.M.
FIRST FLOOR	1,740.41	SQ.FT.	161.69	SQ.M.
SECOND FLOOR	719.35	SQ.FT.	66.83	SQ.M.
TERRACE	754.66	SQ.FT.	70.11	SQ.M.
CAR PORT AREA	645.73	SQ.FT.	59.99	SQ.M.
DRIVER ROOM AREA	143.16	SQ.FT.	13.30	SQ.M.
TOTAL AREA	5,913.79	SQ.FT.	549.41	SQ.M.



KEY PLAN



GROUND FLOOR



FIRST FLOOR



SECOND FLOOR

FLOOR PLAN 1. All dimensions are in imperial and metric, and measured from finish to finish excluding construction tolerances. 2. All materials, dimensions, and drawings are approximate only. 3. Information is subject to change without notice, at developer's absolute discretion. 4. Actual area may vary from the stated area. 5. Drawings not to scale. 6. All images used are for illustrative purposes only and do not represent the actual size, features, specifications, fittings, and furnishings. 7. The developer reserves the right to make revisions / alterations, at it's absolute discretion, without any liability whatsoever.