

NORTHBAY

RESIDENCES



Live in the moment.



Hayat
island



DISCOVER

Ras Al Khaimah



The long and vibrant history of Ras Al Khaimah pervades the landscape, in centuries-old towns, mountaintop forts, coral stone buildings, museums, archaeological exhibits, ancient mosques. The famous Arabian tradition of hospitality is cherished, together with the heritage of adventure, exploration and wonder.

ENCHANTING BEAUTY

Located between the shores of the Arabian Gulf and the magnificent Hajar mountains, Ras Al Khaimah truly has it all - amazing white pure pearly beaches, breathtaking mountains, red sandy desert, fertile green agricultural plains, hot springs, exotic nature preserves and wildlife.





RAS AL KHAIMAH

A rising star

PROSPEROUS AND AMBITIOUS, RAS AL KHAIMAH IS
EXPERIENCING NEW ENERGY.

The emirate of Ras Al Khaimah has had an amazing period of economic growth in recent years, due in part to its Free Trade Zone, several strong expanding industries such as ceramics, manufacturing, construction materials production, tourism and real property development.

It is the most ambitious and the most favorable Emirate for international business in the UAE, characterized by security and stability



INTRODUCING

Mina Al Arab

MINA AL ARAB *Masterplan*

1. THE BEACHFRONT
2. THE LAGOON WALK
3. THE HARBOUR
4. GRANADA
5. MALIBU
6. BERMUDA
7. MARBELLA
8. FLAMINGO VILLAS
9. ECO LODGE
10. WETLANDS
11. THEME PARKS
12. ANANTARA RESORT & SPA
13. INTERCONTINENTAL HOTEL & RESORTS





THE COVE ROTANA

MINA AL ARAB

ECO RESERVE

HAYAT ISLAND

RAHA ISLAND

JAZIRAH PORT

AL JAZIRAT AL HAMRA

AL JAZIRA SPORTS

Anantara *hotel*

EXPERIENCE AUTHENTIC LUXURY
IN A PRESTIGIOUS NEIGHBORHOOD

Experience a lifestyle reserved for the privileged few, for those who love to bask in the lap of luxury, for the discerning and exacting. Creates the perfect ambience to both relax and be entertained.





With 306 units of guest rooms, suites and the dazzling Maldives-inspired overwater villas, private beach, stunning eco-reserve, and an unparalleled variety of amenities the Anantara Mina Al Arab Ras Al Khaimah Resort will absolutely astound you.





WELCOME TO

**Hayat
island**



HAYAT ISLAND *Masterplan*

- | | | |
|------------------------------|---------------------------------------|---------------------------|
| 1. RESIDENCE CLUB & POOL | 11. ADVENTURE PARK | 21. LUXURY RESORT BEACH |
| 2. BEACH VILLAS | 12. NEIGHBOURHOOD PARK | 22. VIP VILLA |
| 3. TOWN HOUSES | 13. THE SOUVI MALL | 23. BEACH FRONT FERRACE |
| 4. DROP OFF & PODIUM PARKING | 14. PEDESTRIAN BRIDGE | 24. ABRA DROP OFF |
| 5. HELIRAD | 15. INTERACTIVE WATER FEATURE | 25. HIEN & WATER TAXI |
| 6. APARTMENT DROP OFF | 16. HOTEL DROP OFF | 26. SERVICE APARTMENTS |
| 7. GATEWAY APARTMENT | 17. LUXURY RESORT | 27. RETAIL/PROMENADE |
| 8. BEACH APARTMENT | 18. LUXURY RESORT VILLAS | 28. F&B KIOSKS |
| 9. LIFESTYLE HOTEL | 19. LUXURY RESORT POOL | 29. PEDESTRIAN CONNECTION |
| 10. EVENTS PLAZA | 20. LUXURY RESORT PRESIDENTIAL VILLAS | |



INTERCONTINENTAL.
RAS AL KHAIMAH MINA AL ARAB RESORT

InterContinental *hotel*

IDEAL PLACE, IDEAL LOCATION, IDEAL EXPERIENCE
THAT'S THE INTERCONTINENTAL GUARANTEE

The prestigious InterContinental Mina Al Arab resort is located on Hayat Island, with 350 guest rooms and suites, as well as dazzling facilities that include a health club, spa, two swimming pools, a fitness centre, and a selection of restaurants.



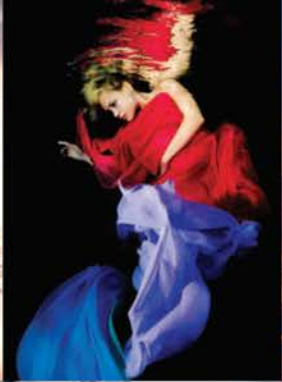
With the diverse and spectacular Ras Al Khaimah fast on the rise as the UAE's desired destination for getaways, nature, and relaxation, the InterContinental Mina Al Arab Resort is a top choice for guests and residents that are used only to the best, and expect it at every turn.



INTERCONTINENTAL.
RAS AL KHAIMAH MINA AL ARAB RESORT

NB

NORTHBAY
RESIDENCES





Northbay

Idyllic location

THE NORTHBAY IS DESIGNED TO EXEMPLIFY AND
ACCENTUATE THE IDYLLIC NATURAL ENVIRONMENT
OF RAS AL KHAIMAH

Swim in the turquoise waters of the Arabian Gulf while gazing upon the majestic Hajar Mountains in the background. Soak in the sun on enchanting beaches, and feel the pearly white sand on your toes. In this natural paradise, with dolphins and flamingos, secluded coves, pearly white sand beaches, nature trails, and desert adventures, the Northbay offers a unique combination of the best of luxury living situated within pure nature, with the ultimate in both recreation and relaxation.



A woman in a white dress is standing on the mast of a sailboat, reaching up towards the rigging. The sailboat's white sails are partially visible, and the background is a clear blue sky. The overall scene is bright and serene, suggesting a luxurious sailing experience.

Ocean views *forever*

SUBLIME SURROUNDINGS

The Northbay tower is on the prestigious Hayat Island of the Mina Al Arab, with the best-in-class amenities the region has to offer, superb beach views, and the breathtaking expanse of the Arabian Gulf.









Its organic design exemplifies both the latest architectural trends and the island's form, expressing the fluidity of the ocean, the sway of the winds, and mimicking the color of Ras Al Khaimah's pearly beaches.

A PEARL OF BEAUTY

As all development on Hayat Island, the Northbay is both ultra-modern and in sync with its natural surroundings.





The highlight of the Northbay towers, its position on Hayat Island and the Arabian Gulf, are the terraces, which provide the possibility to fully take in the stunning beauty of the ocean, the beaches, the little coves and lagoons, and to enjoy a life where contemplating the vast and immense horizon is an amazing daily experience.



INFINITE BEAUTY

The masterful interplay of the specifics of the landscape, the culture, the surrounding architecture, art and ecology translates into a unique design and living experience.







In the centre *of it all*

FEEL THE BUZZ

The Northbay is conveniently close to Hayat Island's fascinating public areas and amenities, which include the wide array of dining, retail and entertainment possibilities, promenades, walkways, boardwalks, parks, playgrounds and events spaces. It is adjacent to the prestigious InterContinental Mina Al Arab resort, a center for all that is happening.



Designed *to inspire*

HARMONIOUS INTERIORS

The Northbay apartments have been created to accommodate all the necessities needed for ultra-comfortable and plush living, and to render them truly exceptional, through nature-inspired materials, smooth surfaces, clear spaces, open arrangements, details inspired by culture and tradition, all further enhanced with stunning views of the ocean and the lagoon.





AMENITIES

Infinite *wonder*

AMENITIES OF THE NORTHBAY PROVIDE ALL THE ESSENTIALS OF A LUXURY EXPERIENCE

We've got you covered with a world-class gym, a shaded kids' pool and dazzling sunbathing deck. Yet we've also thought about those super luxurious moments, such as viewing the ocean from the tranquility of an infinity pool. The Northbay also provides unique, organic spaces, such as an aromatic garden, with colorful and aromatic trees, an open lawn, and a residential garden to connect and share.



“

“The best of luxury living with the ultimate in both recreation and relaxation.”

RAK PROPERTIES



The Northbay has everything you need for a perfect life - dazzling alabaster beaches, infinite ocean views, amenities to nourish and strengthen body and soul, and features that pamper and indulge to the maximum.

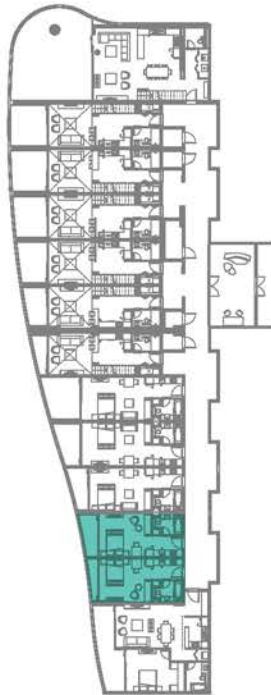
FLOOR PLANS

STUDIO

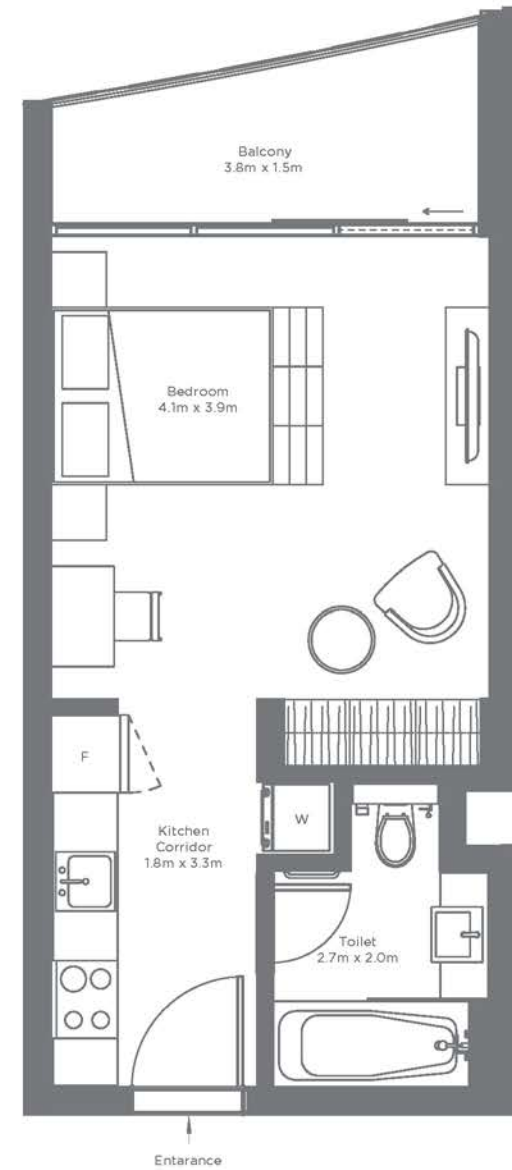
APARTMENT

TYPE 1

| | Sq.f | Podium Sq.mt |
|--------------|-----------------------|---------------------|
| Unit Area | 351.76 | 32.68 |
| Terrace Area | 46.18 - 76.82 Range | 4.29 - 7.10 Range |
| Total Area | 397.94 - 428.19 Range | 36.97 - 39.78 Range |



Units | 002 - 003



Floor plan numbers, square footage, and floor plans are approximate. Final dimensions, square footage and floor plans may vary or may be mirrored. Balcony areas for each type differ.

STUDIO

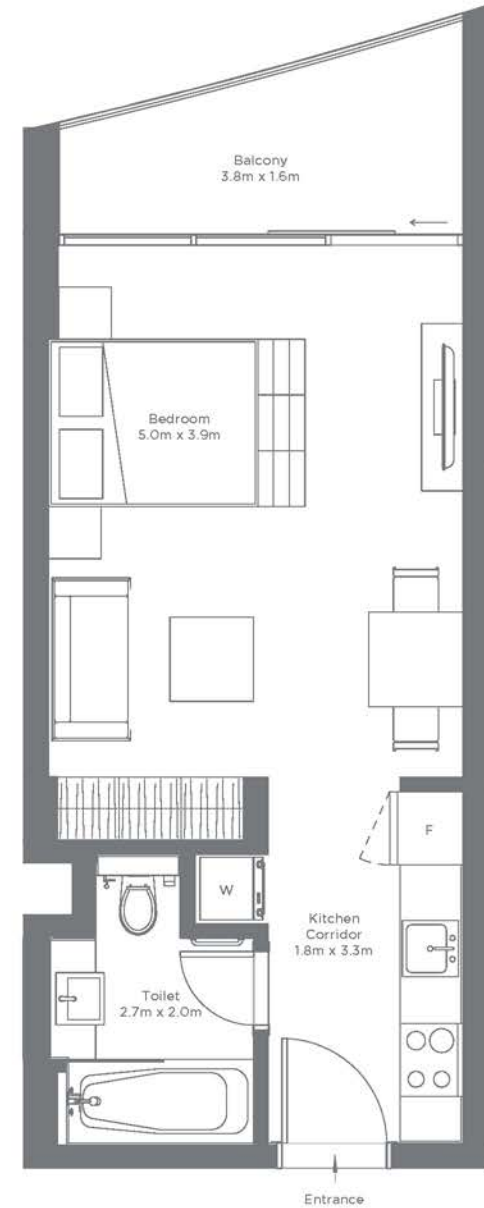
APARTMENT

TYPE 2

| | Sq.f | Podium Sq.m |
|--------------|--------|----------------|
| Unit Area | 392.02 | 36.42 |
| Terrace Area | 67.92 | 6.31 |
| Total Area | 459.94 | 42.73 |



Unit | 004



Floor plan numbers, square footage, and floor plans are approximate. Final dimensions, square footage and floor plans may vary or may be mirrored. Balcony areas for each type differ.

STUDIO

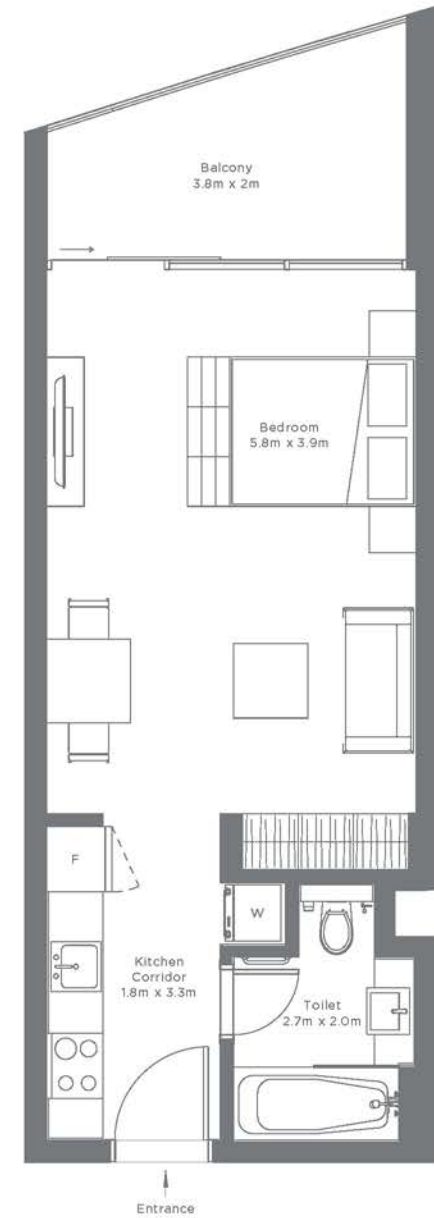
APARTMENT

TYPE 3

| | Sq.f | Podium Sq.mt |
|--------------|-----------------------|---------------------|
| Unit Area | 424.96 | 39.48 |
| Terrace Area | 103.98 - 159.20 Range | 9.66 - 14.79 Range |
| Total Area | 528.94 - 584.16 Range | 49.14 - 54.27 Range |



Unit | 005, 006



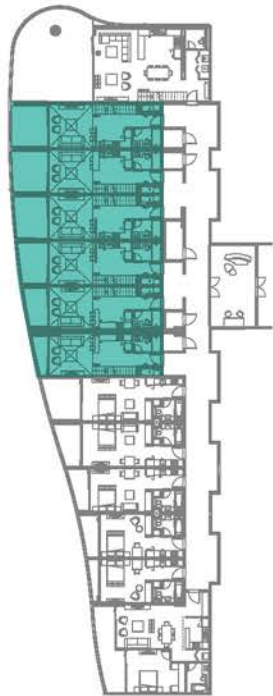
Floor plan numbers, square footage, and floor plans are approximate. Final dimensions, square footage and floor plans may vary or may be mirrored. Balcony areas for each type differ.

LOFT

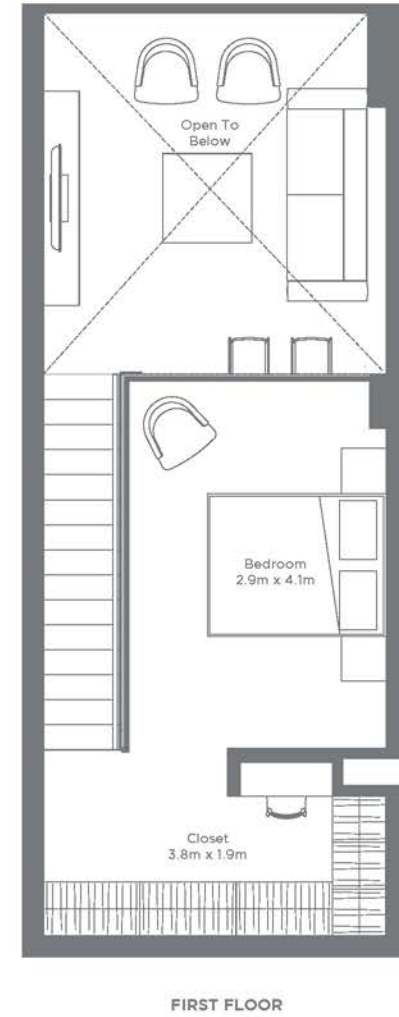
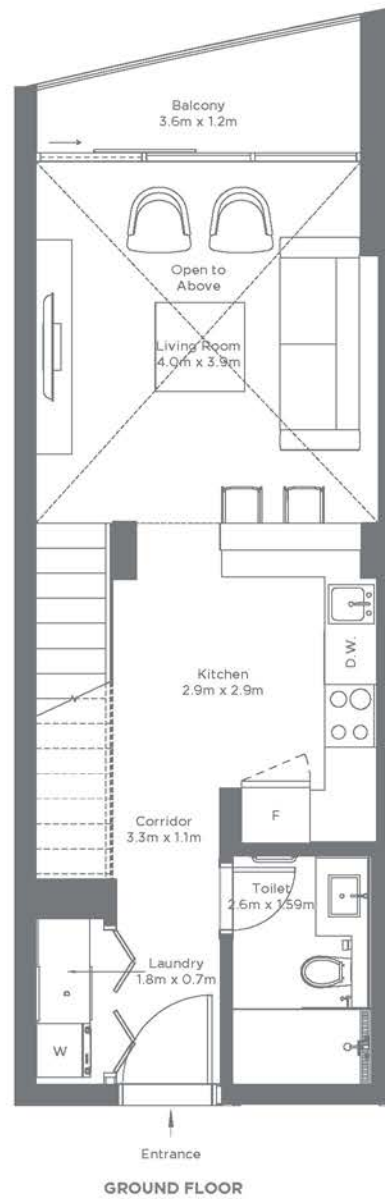
1 BEDROOM APARTMENT

TYPE 1

| | Sq.f | Podium Sq.mt |
|--------------|-----------------------|---------------------|
| Unit Area | 756.59 | 70.29 |
| Terrace Area | 65.55 - 158.34 Range | 6.09 - 14.71 Range |
| Total Area | 822.15 - 914.93 Range | 76.38 - 85.00 Range |



Unit | 007, 008, 009, 010, 011, 012



Floor plan numbers, square footage, and floor plans are approximate. Final dimensions, square footage and floor plans may vary or may be mirrored. Balcony areas for each type differ.

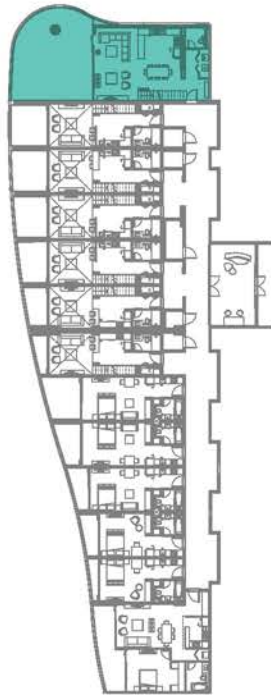
LOFT

1 BEDROOM APARTMENT

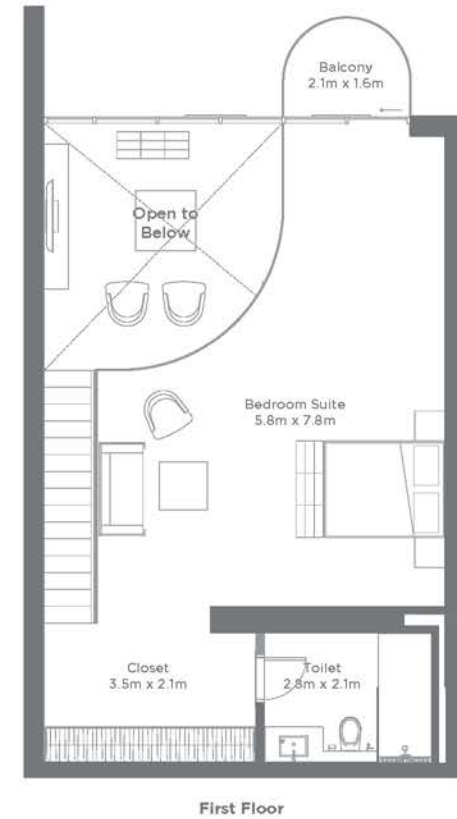
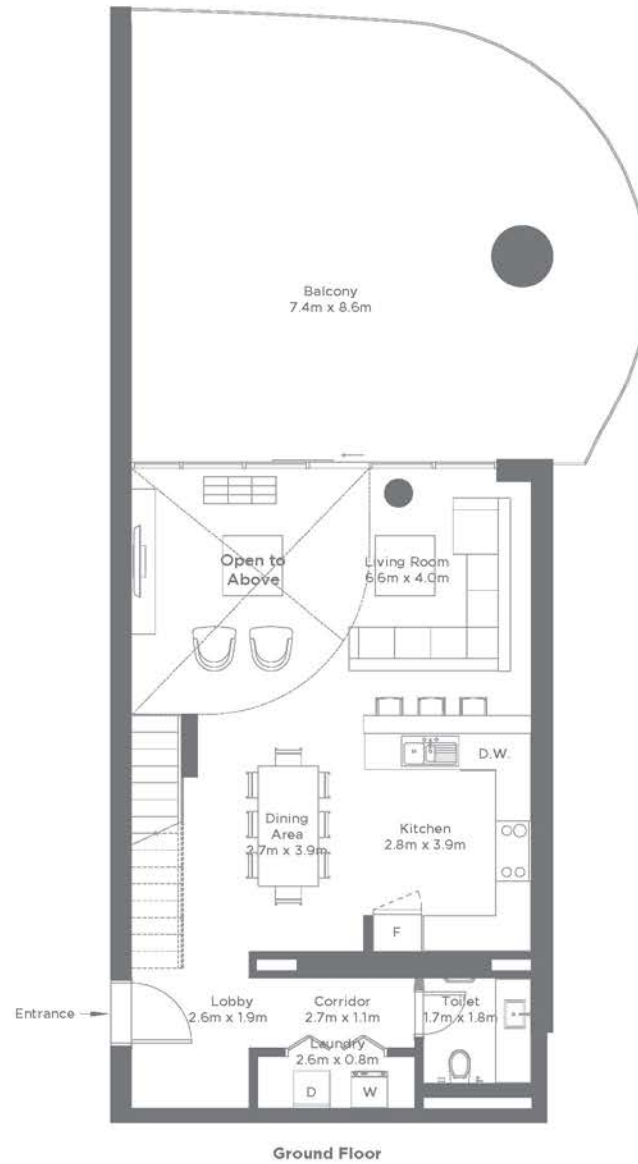
TYPE 2

Podium

| | Sq.f | Sq.m |
|--------------|---------|--------|
| Unit Area | 1366.26 | 126.93 |
| Terrace Area | 393.42 | 36.55 |
| Total Area | 1759.68 | 163.48 |



Unit | 013



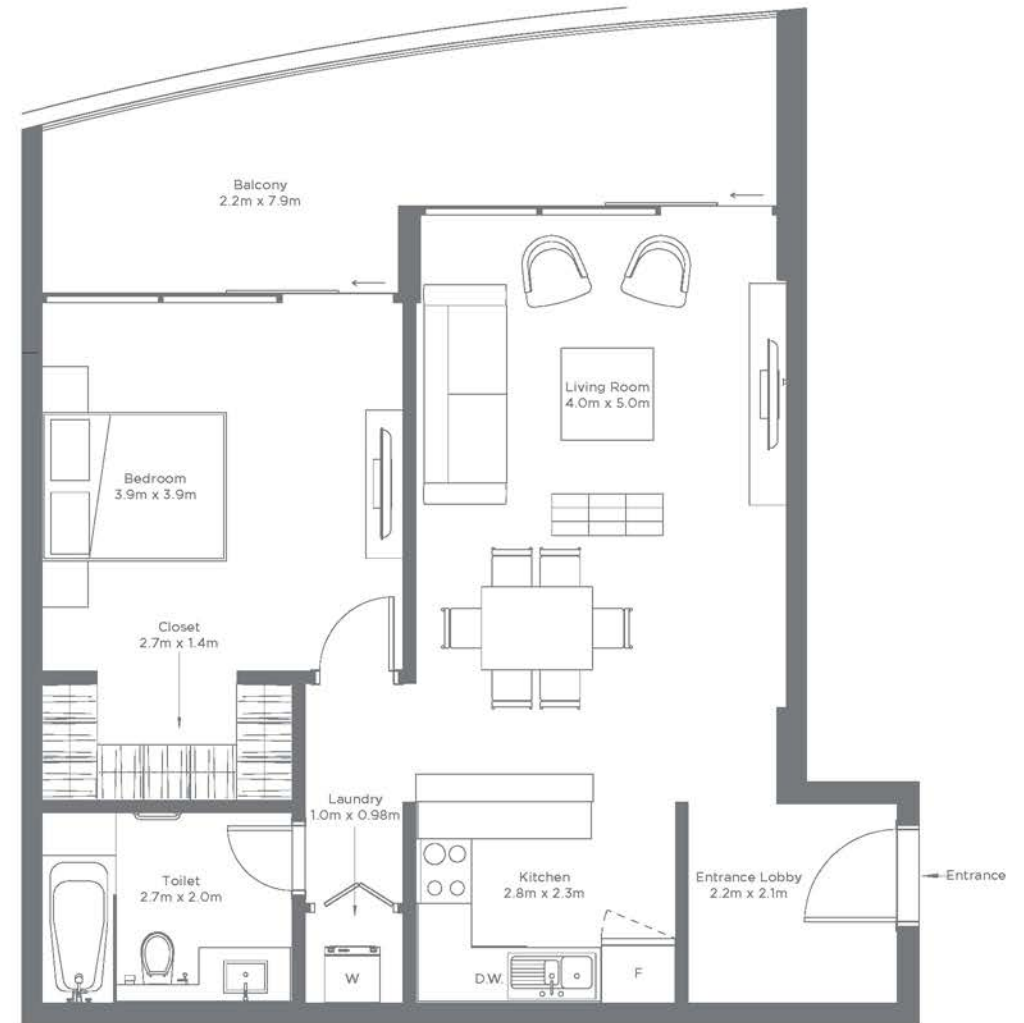
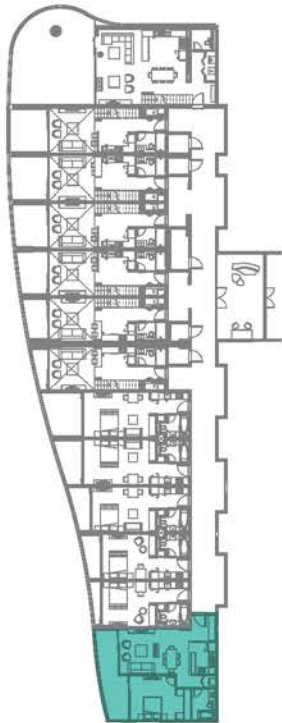
Floor plan numbers, square footage, and floor plans are approximate. Final dimensions, square footage and floor plans may vary or may be mirrored. Balcony areas for each type differ.

1

BEDROOM APARTMENT

TYPE 2

| | Sqf | Sq.mt |
|--------------|--------|-------|
| Unit Area | 754.76 | 70.12 |
| Terrace Area | 188.37 | 17.50 |
| Total Area | 943.13 | 87.62 |



Units | 001

Floor plan numbers, square footage, and floor plans are approximate. Final dimensions, square footage and floor plans may vary or may be mirrored. Balcony areas for each type differ.

STUDIO

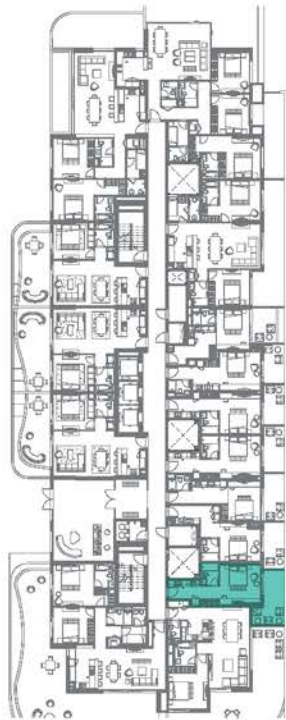
APARTMENT

TYPE 1

Tower 1

| | Sq.f | Sq.mt |
|--------------|--------|-------|
| Unit Area | 355.21 | 33.00 |
| Terrace Area | 139.92 | 13.00 |
| Total Area | 495.13 | 46.00 |

Level 1



Unit | 108

Floor plan numbers, square footage, and floor plans are approximate. Final dimensions, square footage and floor plans may vary or may be mirrored. Balcony areas for each type differ.



STUDIO

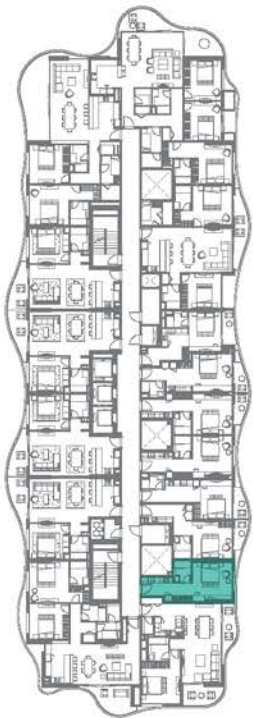
APARTMENT

TYPE 1

Tower 1

| | Sq.f | Sq.mt |
|--------------|--------|-------|
| Unit Area | 355.21 | 33.00 |
| Terrace Area | 0.00 | 0.00 |
| Total Area | 355.21 | 33.00 |

Level 2-5



Unit | 209, 309, 409, 509

Floor plan numbers, square footage, and floor plans are approximate. Final dimensions, square footage and floor plans may vary or may be mirrored. Balcony areas for each type differ.



STUDIO

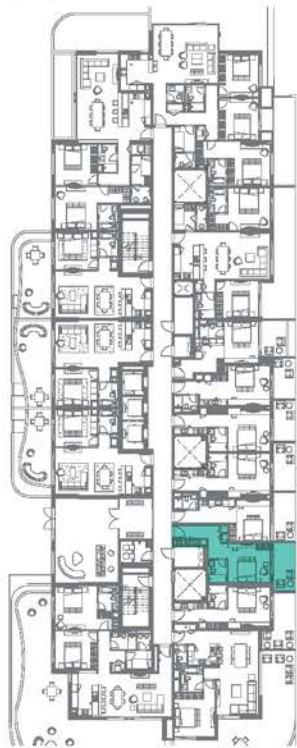
APARTMENT

TYPE 2

Tower 1

| | Sq.f | Sq.mt |
|--------------|--------|-------|
| Unit Area | 376.74 | 35.00 |
| Terrace Area | 107.63 | 10.00 |
| Total Area | 484.37 | 45.00 |

Level 1



Unit | 109

Floor plan numbers, square footage, and floor plans are approximate. Final dimensions, square footage and floor plans may vary or may be mirrored. Balcony areas for each type differ.



STUDIO

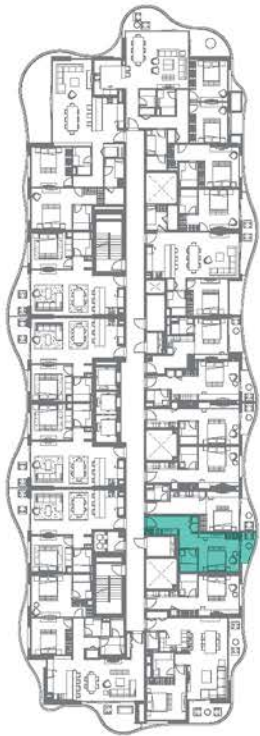
APARTMENT

TYPE 2

Tower 1

| | Sq.f | Sq.mt |
|--------------|--------|-------|
| Unit Area | 376.74 | 35.00 |
| Terrace Area | 37.67 | 3.50 |
| Total Area | 414.41 | 38.50 |

Level 2-5



Unit | 210, 310, 410, 510

Floor plan numbers, square footage, and floor plans are approximate. Final dimensions, square footage and floor plans may vary or may be mirrored. Balcony areas for each type differ.



STUDIO

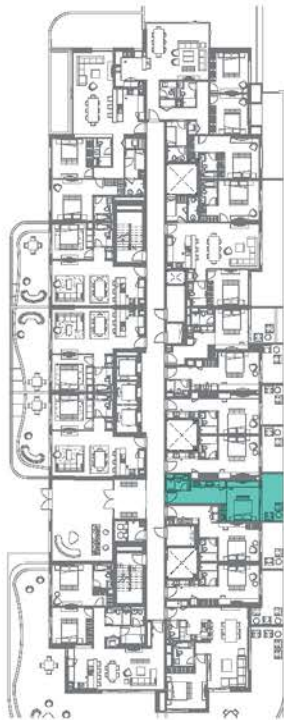
APARTMENT

TYPE 3

Tower 1

| | Sq.f | Sq.mt |
|--------------|--------|-------|
| Unit Area | 344.45 | 32.00 |
| Terrace Area | 107.63 | 10.00 |
| Total Area | 452.08 | 42.00 |

Level 1



Unit | 110

Floor plan numbers, square footage, and floor plans are approximate. Final dimensions, square footage and floor plans may vary or may be mirrored. Balcony areas for each type differ.



STUDIO

APARTMENT

TYPE 3

Tower 1

| | Sq.f | Sq.m |
|--------------|--------|-------|
| Unit Area | 344.45 | 32.00 |
| Terrace Area | 37.67 | 3.50 |
| Total Area | 382.12 | 35.50 |

Level 2-5



Unit | 211, 311, 411, 511

Floor plan numbers, square footage, and floor plans are approximate. Final dimensions, square footage and floor plans may vary or may be mirrored. Balcony areas for each type differ.



STUDIO

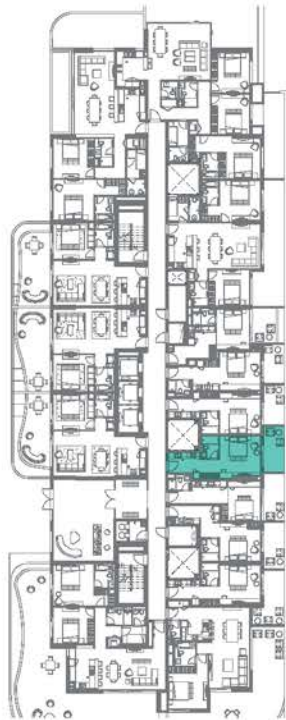
APARTMENT

TYPE 4

Tower 1

| | Sq.f | Sq.mt |
|--------------|--------|-------|
| Unit Area | 365.97 | 34.00 |
| Terrace Area | 107.63 | 10.00 |
| Total Area | 473.60 | 44.00 |

Level 1



Unit | 111

Floor plan numbers, square footage, and floor plans are approximate. Final dimensions, square footage and floor plans may vary or may be mirrored. Balcony areas for each type differ.



STUDIO

APARTMENT

TYPE 4

Tower 1

| | Sq.f | Sq.mt |
|--------------|--------|-------|
| Unit Area | 365.97 | 34.00 |
| Terrace Area | 0.00 | 0.00 |
| Total Area | 365.97 | 34.00 |

Level 2-5



Unit | 212, 312, 412, 512

Floor plan numbers, square footage, and floor plans are approximate. Final dimensions, square footage and floor plans may vary or may be mirrored. Balcony areas for each type differ.



STUDIO

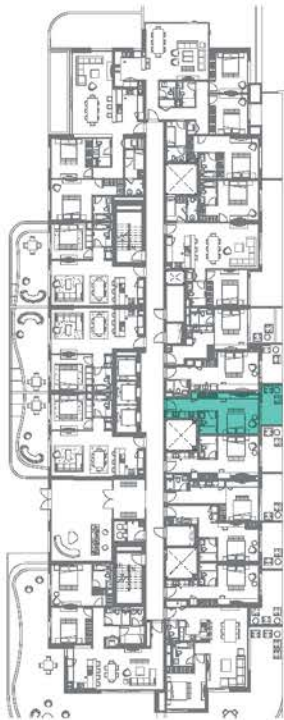
APARTMENT

TYPE 5

Tower 1

| | Sq.f | Sq.mt |
|--------------|--------|-------|
| Unit Area | 365.97 | 34.00 |
| Terrace Area | 89.33 | 8.30 |
| Total Area | 455.31 | 42.30 |

Level 1



Unit | 112

Floor plan numbers, square footage, and floor plans are approximate. Final dimensions, square footage and floor plans may vary or may be mirrored. Balcony areas for each type differ.



STUDIO

APARTMENT

TYPE 5

Tower 1

| | Sq.f | Sq.m |
|--------------|--------|-------|
| Unit Area | 365.97 | 34.00 |
| Terrace Area | 37.67 | 3.50 |
| Total Area | 403.64 | 37.50 |

Level 2-5



Unit | 213, 313, 413, 513

Floor plan numbers, square footage, and floor plans are approximate. Final dimensions, square footage and floor plans may vary or may be mirrored. Balcony areas for each type differ.



STUDIO

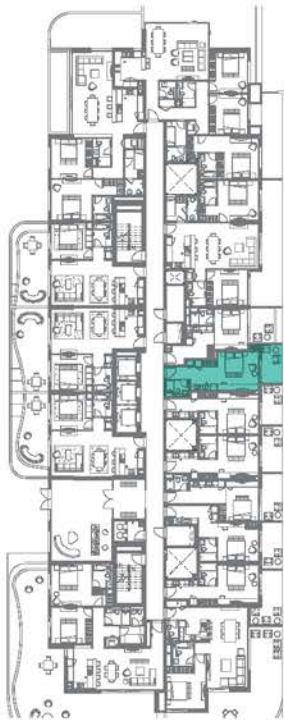
APARTMENT

TYPE 6

Tower 1

| | Sq.f | Sq.mt |
|--------------|--------|-------|
| Unit Area | 376.74 | 35.00 |
| Terrace Area | 89.33 | 8.30 |
| Total Area | 466.07 | 43.30 |

Level 1



Unit | 113

Floor plan numbers, square footage, and floor plans are approximate. Final dimensions, square footage and floor plans may vary or may be mirrored. Balcony areas for each type differ.



STUDIO

APARTMENT

TYPE 6

Tower 1

| | Sq.f | Sq.mt |
|--------------|--------|-------|
| Unit Area | 376.74 | 35.00 |
| Terrace Area | 37.67 | 3.50 |
| Total Area | 414.41 | 38.50 |

Level 2-5



Unit | 214, 314, 414, 514

Floor plan numbers, square footage, and floor plans are approximate. Final dimensions, square footage and floor plans may vary or may be mirrored. Balcony areas for each type differ.



STUDIO

APARTMENT

TYPE 7

Tower 1

| | Sq.f | Sq.mt |
|--------------|--------|-------|
| Unit Area | 355.21 | 33.00 |
| Terrace Area | 89.33 | 8.30 |
| Total Area | 444.54 | 41.30 |

Level 1



Unit | 114

Floor plan numbers, square footage, and floor plans are approximate. Final dimensions, square footage and floor plans may vary or may be mirrored. Balcony areas for each type differ.



STUDIO

APARTMENT

TYPE 7

Tower 1

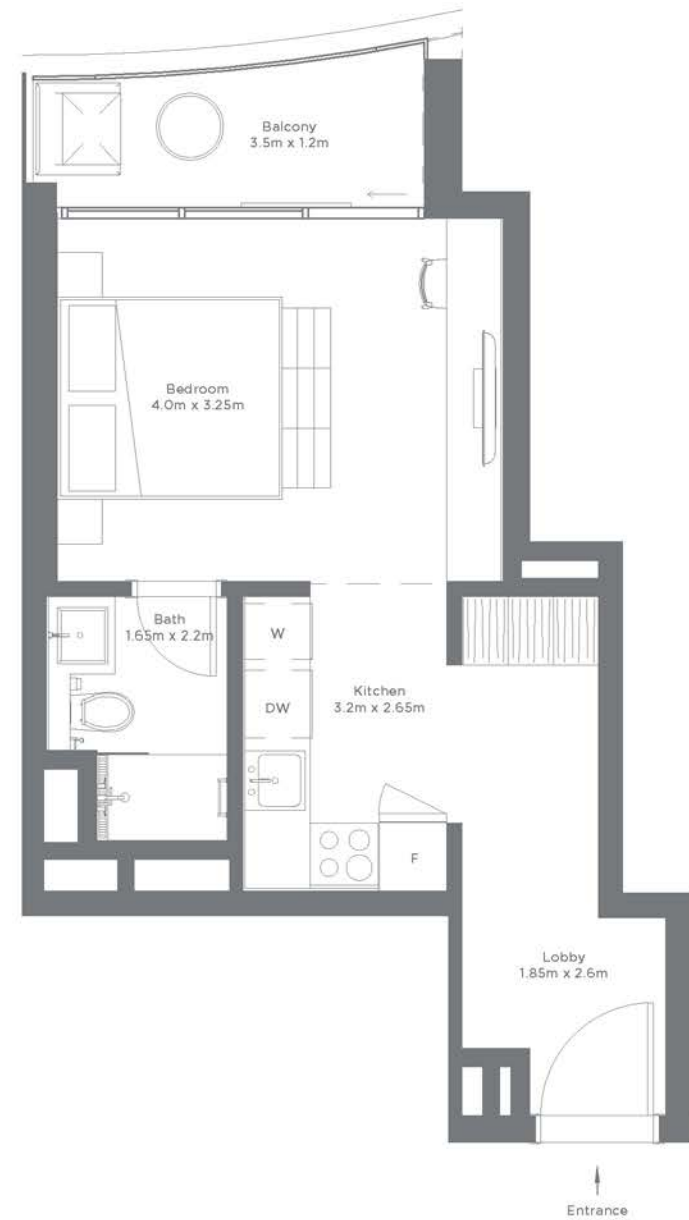
| | Sq.f | Sq.mt |
|--------------|--------|-------|
| Unit Area | 355.21 | 33.00 |
| Terrace Area | 53.82 | 5.00 |
| Total Area | 409.02 | 38.00 |

Level 2-5



Unit | 215, 315, 415, 515

Floor plan numbers, square footage, and floor plans are approximate. Final dimensions, square footage and floor plans may vary or may be mirrored. Balcony areas for each type differ.



1

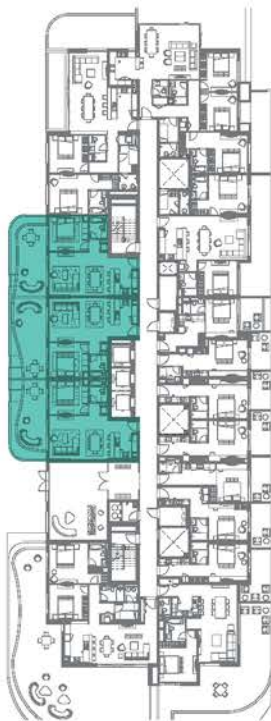
BEDROOM APARTMENT

TYPE 1

Tower 1

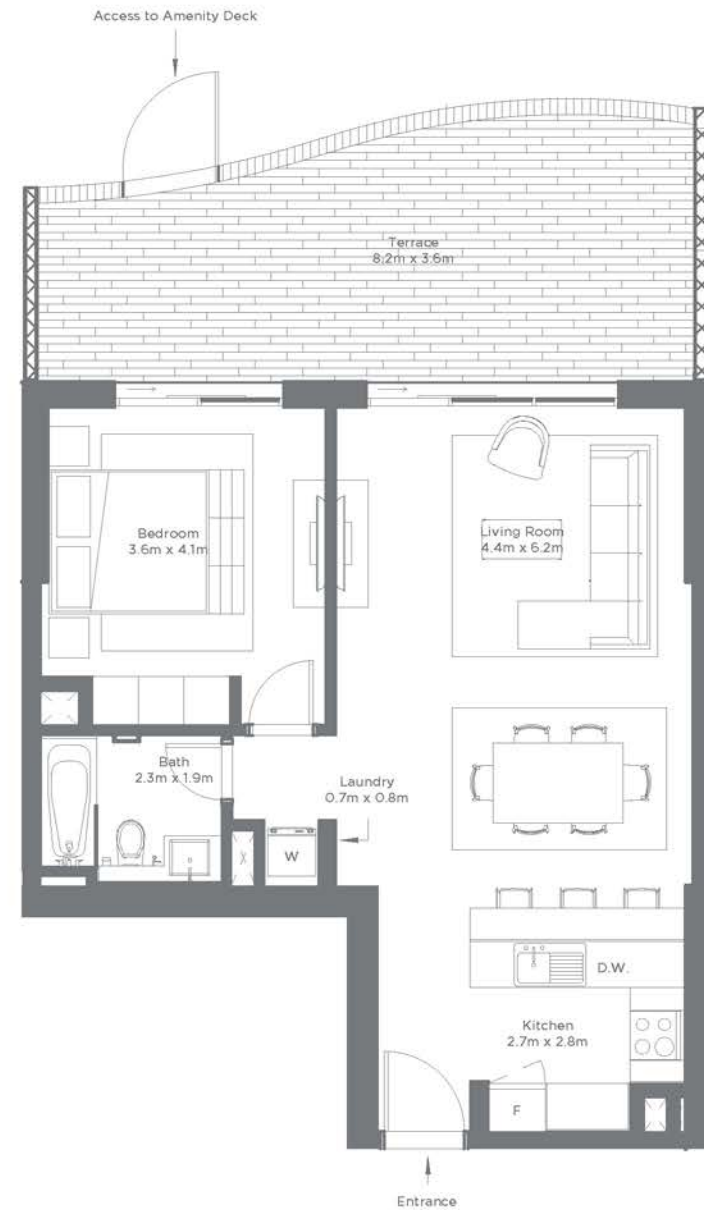
| | Sq.f | Sq.mt |
|--------------|---------|-------|
| Unit Area | 710.42 | 66.00 |
| Terrace Area | 322.89 | 30.00 |
| Total Area | 1033.31 | 96.00 |

Level 1



Units | 103, 104, 105

Floor plan numbers, square footage, and floor plans are approximate. Final dimensions, square footage and floor plans may vary or may be mirrored. Balcony areas for each type differ.



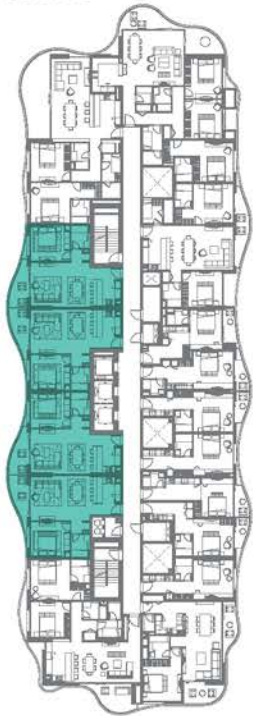
1

BEDROOM APARTMENT

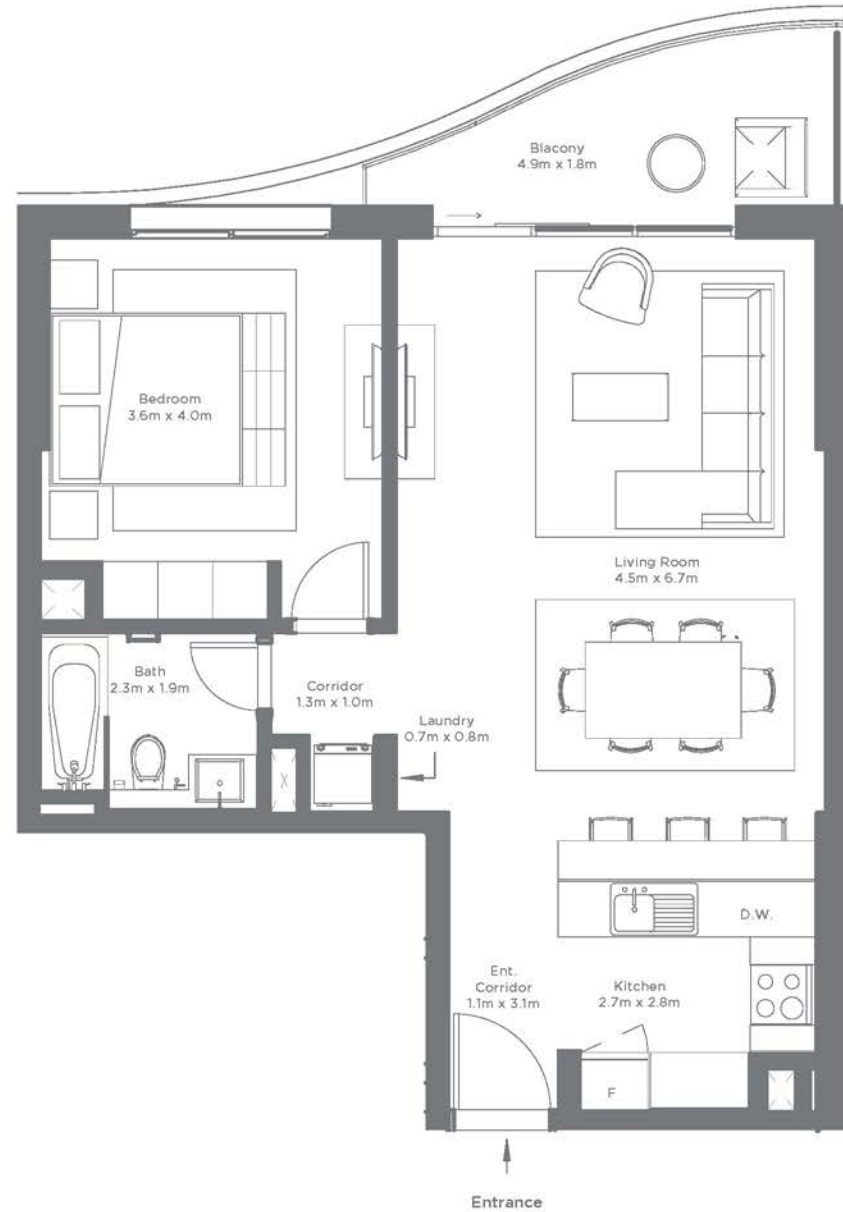
TYPE 1

| | Sq.f | Tower 1 Sq.mt |
|--------------|--------|------------------|
| Unit Area | 710.42 | 66.00 |
| Balcony Area | 75.34 | 7.00 |
| Total Area | 785.76 | 73.00 |

Level 2-10



Level 11



Units | 203-206, 303-306, 403-406, 503-506, 603-606 & 703-706, 803-806, 903-906, 1003-1006, 1101-1103, 1108

Floor plan numbers, square footage, and floor plans are approximate. Final dimensions, square footage and floor plans may vary or may be mirrored. Balcony areas for each type differ.

1

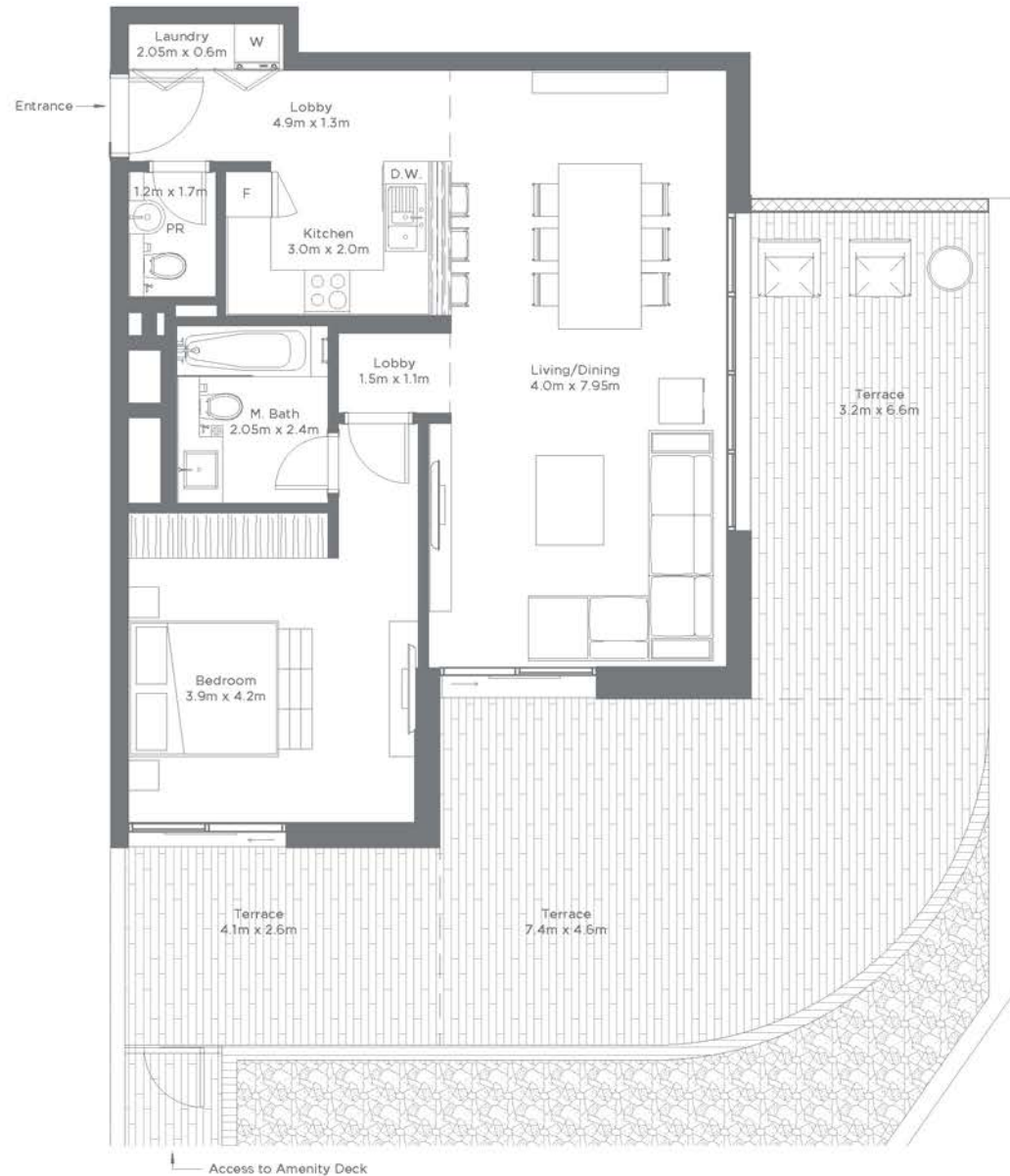
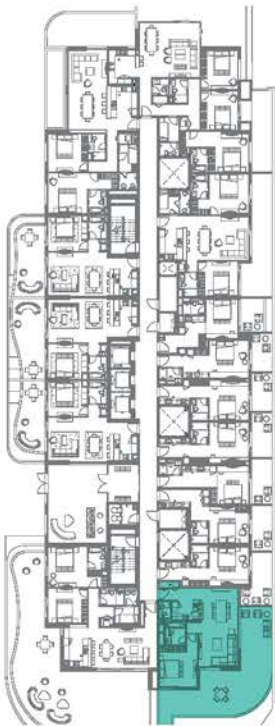
BEDROOM APARTMENT

TYPE 3

Tower 1

| | Sq.f | Sq.m |
|--------------|---------|--------|
| Unit Area | 850.35 | 79.00 |
| Terrace Area | 667.31 | 62.00 |
| Total Area | 1517.66 | 141.00 |

Level 1



Units | 107

Floor plan numbers, square footage, and floor plans are approximate. Final dimensions, square footage and floor plans may vary or may be mirrored. Balcony areas for each type differ.

1

BEDROOM APARTMENT

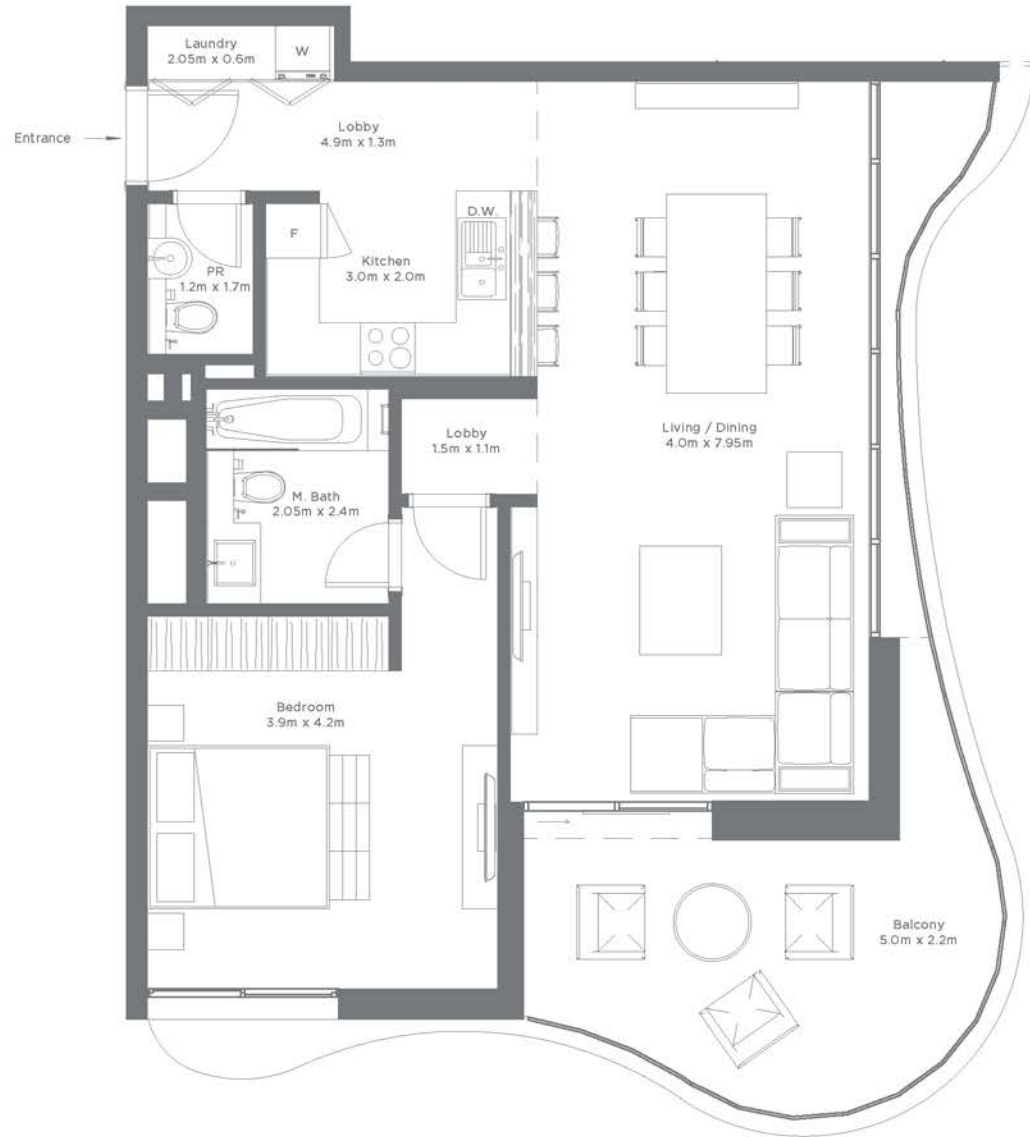
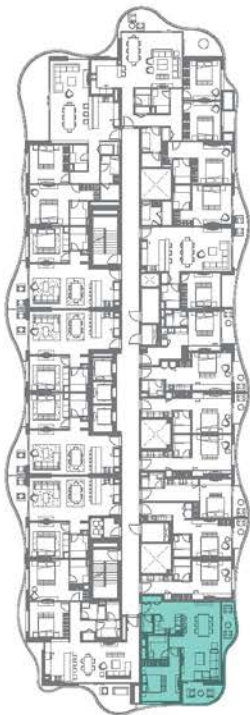
TYPE 3

Tower 1

| | Sq.f | Sq.mt |
|--------------|--------|-------|
| Unit Area | 850.35 | 79.00 |
| Terrace Area | 139.92 | 13.00 |
| Total Area | 990.27 | 92.00 |

Level 2,4

Level 3,5



Units | 208, 308, 408, 508

Floor plan numbers, square footage, and floor plans are approximate. Final dimensions, square footage and floor plans may vary or may be mirrored. Balcony areas for each type differ.

2

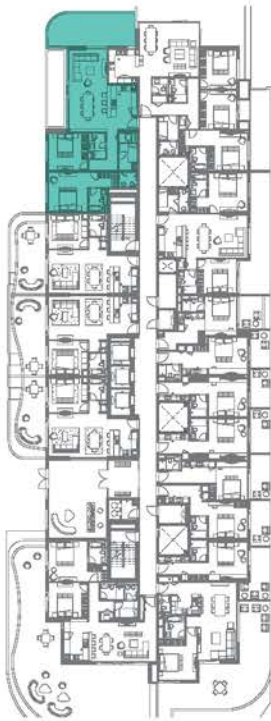
BEDROOM APARTMENT

TYPE 1

Tower 1

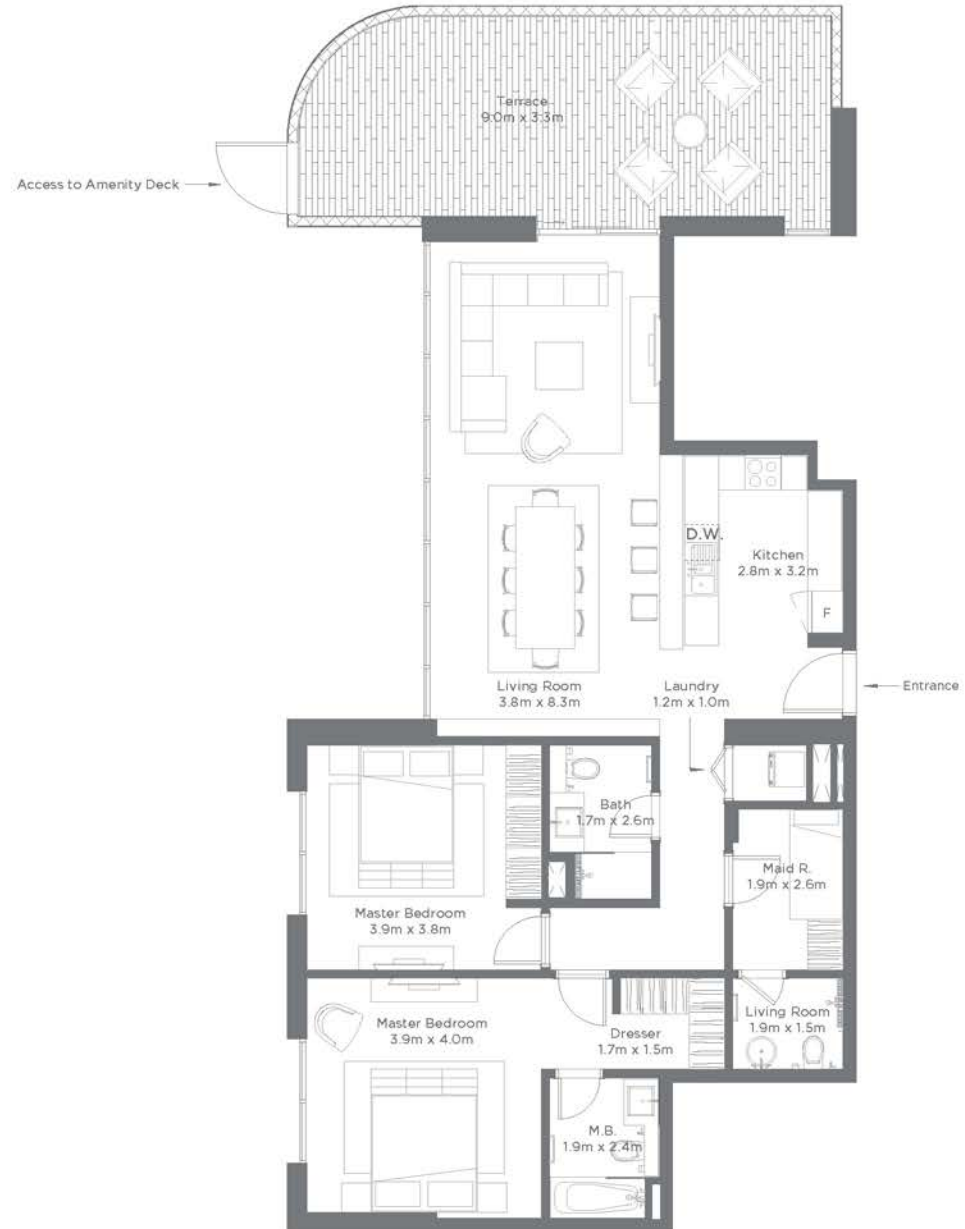
| | Sq.f | Sq.m |
|--------------|---------|--------|
| Unit Area | 1313.20 | 122.00 |
| Balcony Area | 322.89 | 30.00 |
| Total Area | 1636.09 | 152.00 |

Level 1



Units | 102

Floor plan numbers, square footage, and floor plans are approximate. Final dimensions, square footage and floor plans may vary or may be mirrored. Balcony areas for each type differ.



2

BEDROOM APARTMENT

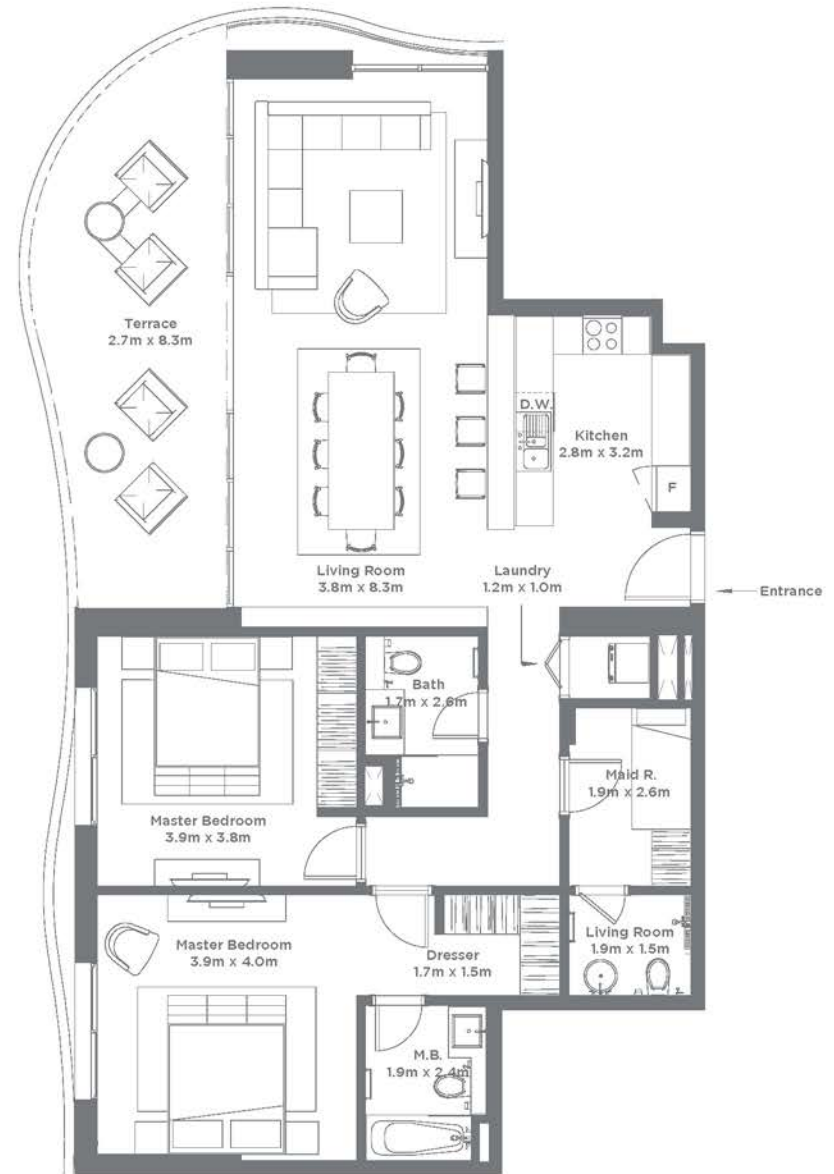
TYPE 1

Tower 1

| | Sq.f | Sq.mt |
|--------------|---------|--------|
| Unit Area | 1313.20 | 122.00 |
| Balcony Area | 226.02 | 21.00 |
| Total Area | 1539.22 | 143.00 |

Level 2,4,6,8

Level 3,5,7,9



Units | 202, 302, 402, 502, 602, 702, 802, 902

Floor plan numbers, square footage, and floor plans are approximate. Final dimensions, square footage and floor plans may vary or may be mirrored. Balcony areas for each type differ.

2

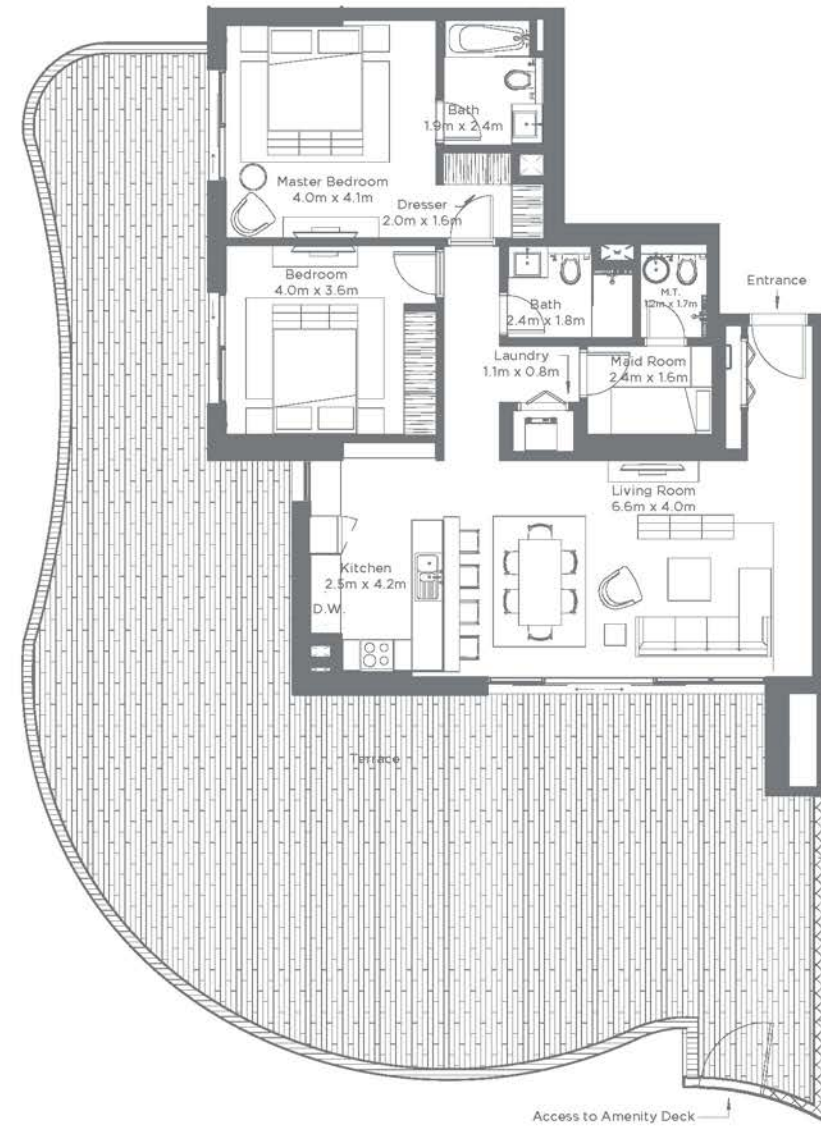
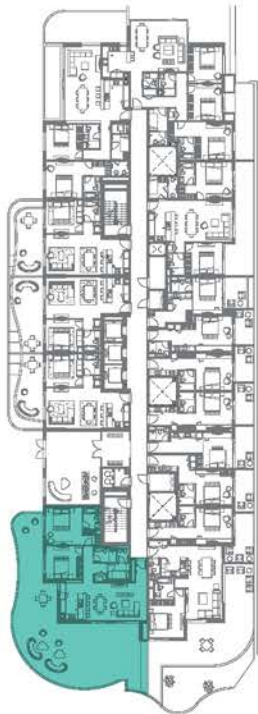
BEDROOM APARTMENT

TYPE 2

Tower 1

| | Sq.f | Sq.m |
|--------------|---------|--------|
| Unit Area | 1216.32 | 113.00 |
| Balcony Area | 1399.19 | 130.00 |
| Total Area | 2615.51 | 243.00 |

Level 1



Units | 106

Floor plan numbers, square footage, and floor plans are approximate. Final dimensions, square footage and floor plans may vary or may be mirrored. Balcony areas for each type differ.

2

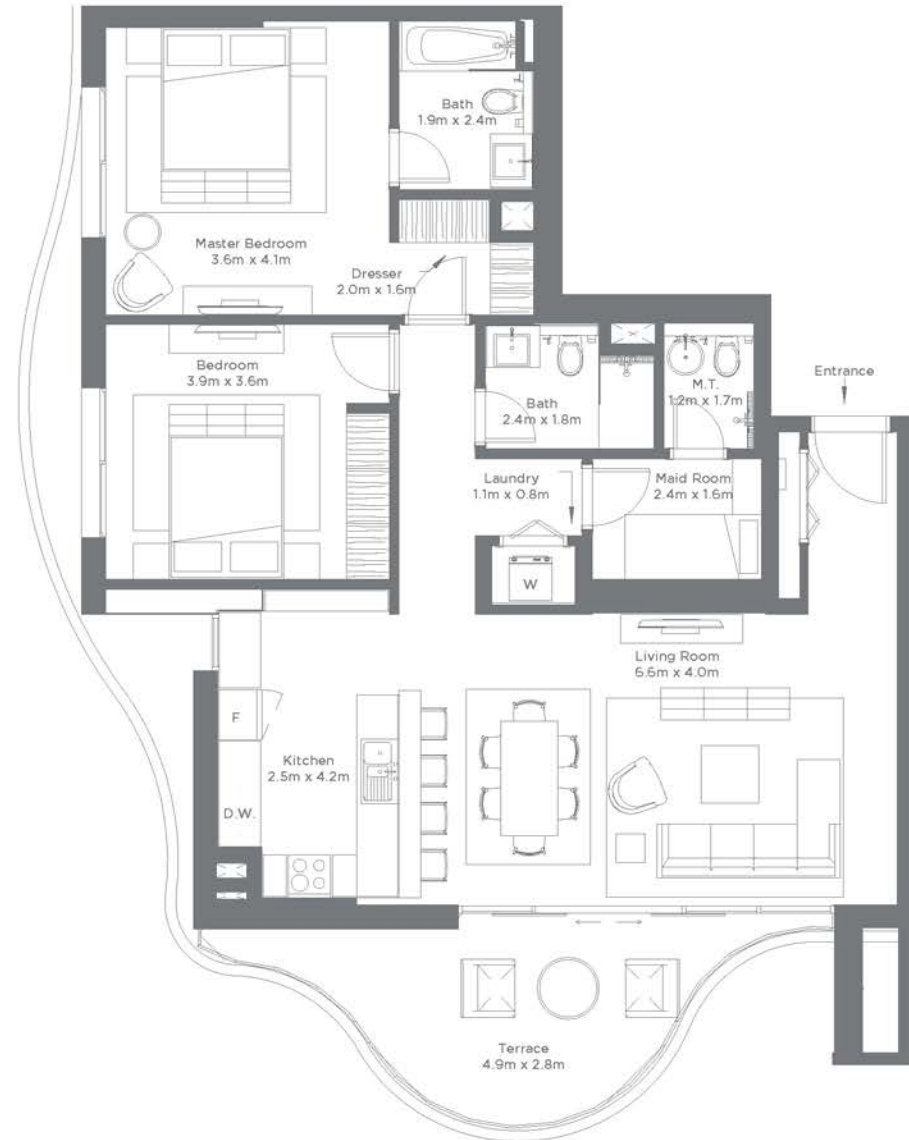
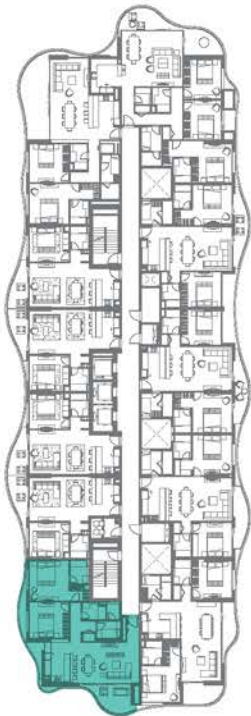
BEDROOM APARTMENT

TYPE 2

| | Sq.f | Tower 1 Sq.mt |
|--------------|-------------------------|-----------------------|
| Unit Area | 1216.30 | 113.00 |
| Balcony Area | 118.39 - 139.92 Range | 11.00 - 13.00 Range |
| Total Area | 1334.71 - 1356.24 Range | 124.00 - 126.00 Range |

Level 2,4,6,8,10

Level 3,5,7,9,11



Units | 207, 307, 407, 507, 607, 707, 807, 907, 1007, 1104

Floor plan numbers, square footage, and floor plans are approximate. Final dimensions, square footage and floor plans may vary or may be mirrored. Balcony areas for each type differ.

2

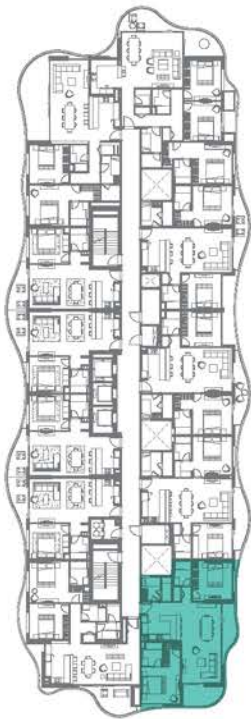
BEDROOM APARTMENT

TYPE 3

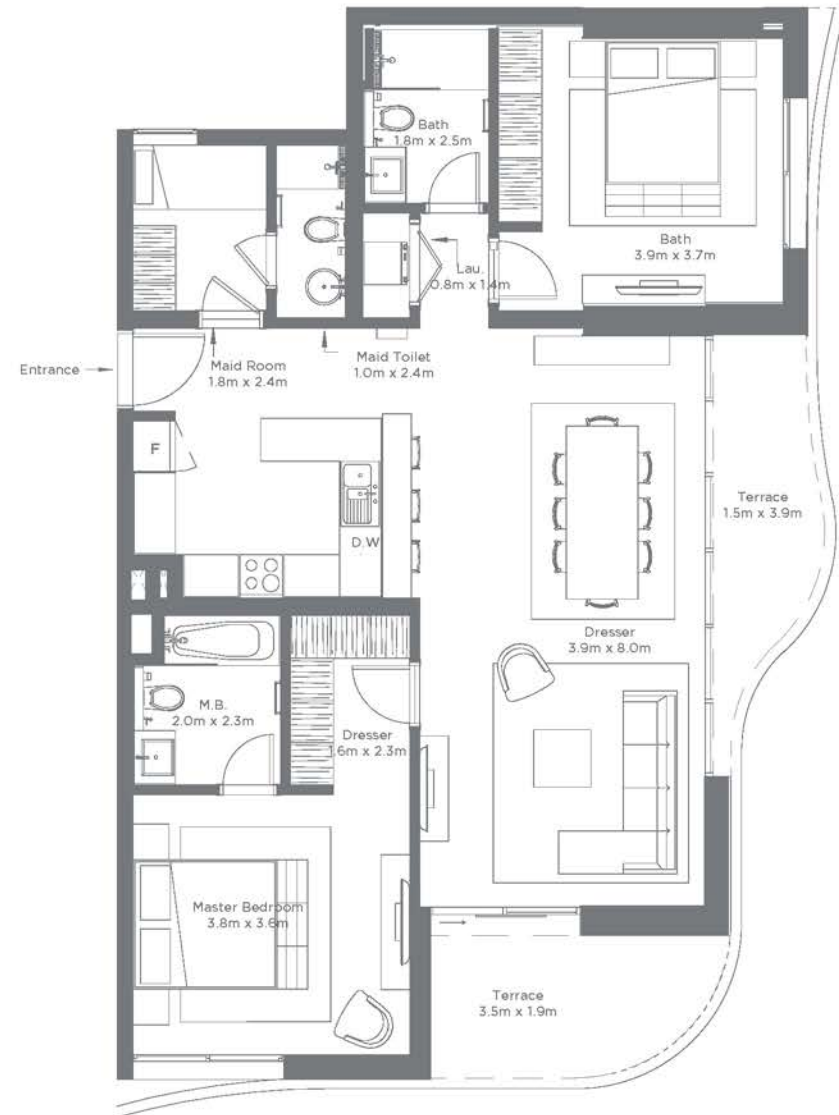
Tower 1

| | Sq.f | Sq.mt |
|--------------|-------------------------|-----------------------|
| Unit Area | 1216.30 | 113.00 |
| Balcony Area | 86.10 - 139.92 Range | 8.00 - 13.00 Range |
| Total Area | 1302.43 - 1356.24 Range | 121.00 - 126.00 Range |

Level 6,8,10



Level 7,9,11



Units | 608, 708, 808, 908, 1008, 1105

Floor plan numbers, square footage, and floor plans are approximate. Final dimensions, square footage and floor plans may vary or may be mirrored. Balcony areas for each type differ.

2

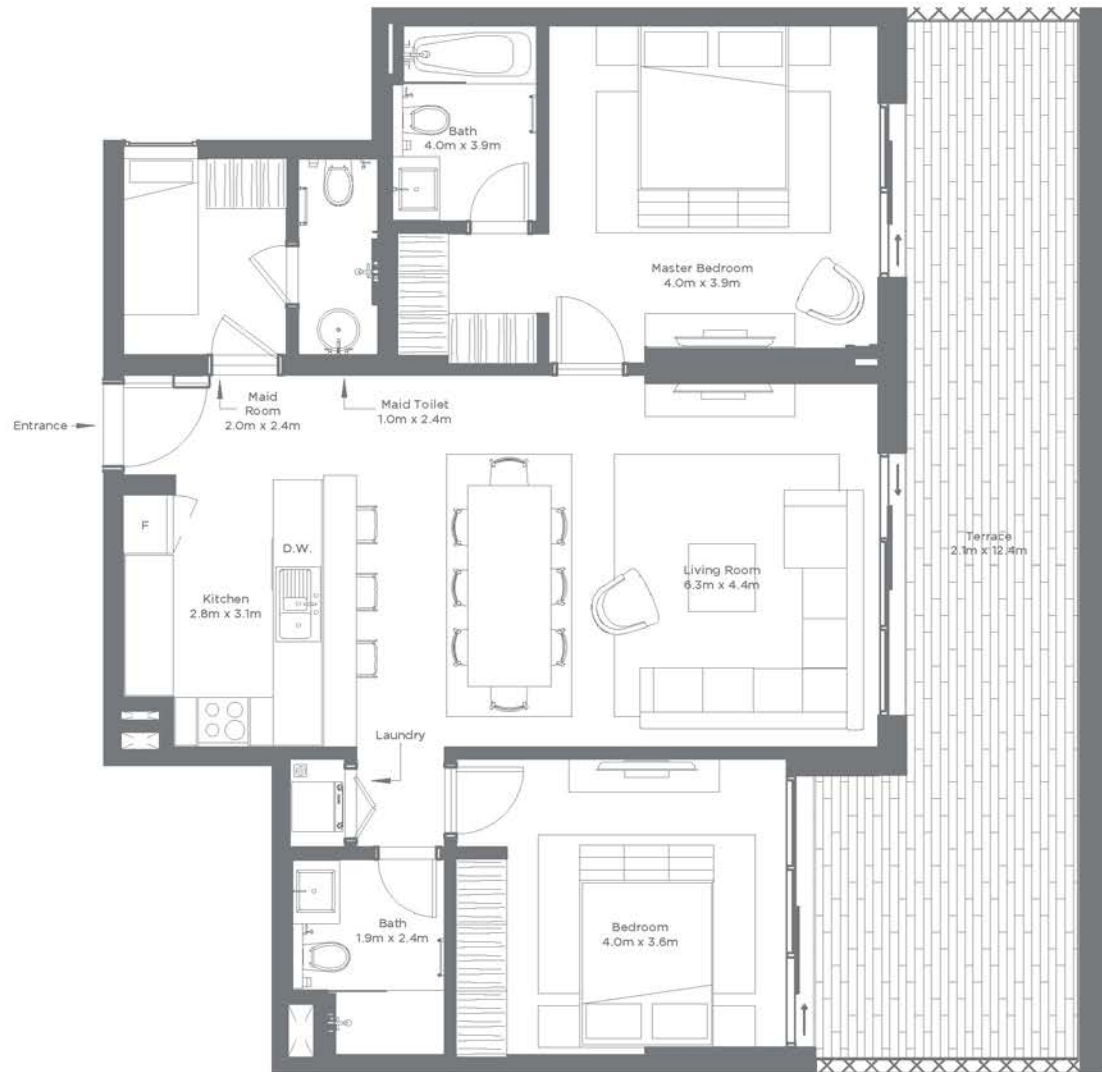
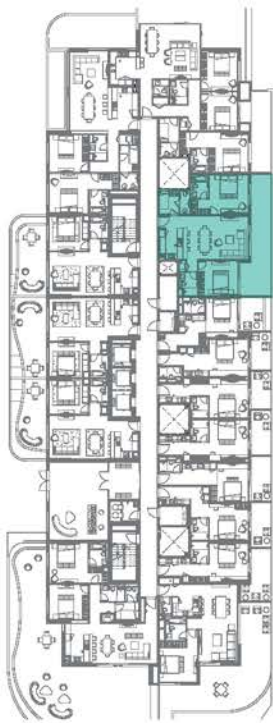
BEDROOM APARTMENT

TYPE 4

Tower 1

| | Sq.f | Sq.m |
|--------------|---------|--------|
| Unit Area | 1097.92 | 102.00 |
| Terrace Area | 322.89 | 30.00 |
| Total Area | 1420.81 | 132.00 |

Level 1



Units | 115

Floor plan numbers, square footage, and floor plans are approximate. Final dimensions, square footage and floor plans may vary or may be mirrored. Balcony areas for each type differ.

2

BEDROOM APARTMENT

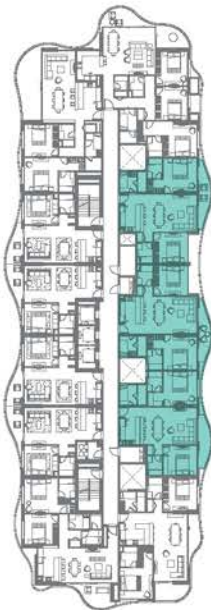
TYPE 4

| | Sqf | Tower 1 Sq.mt |
|--------------|-------------------------|-----------------------|
| Unit Area | 1097.49 - 1097.92 Range | 101.96 - 102.00 Range |
| Terrace Area | 53.82 - 75.34 Range | 5.00 - 7.00 Range |
| Total Area | 1151.30 - 1173.26 Range | 106.96 - 109.00 Range |

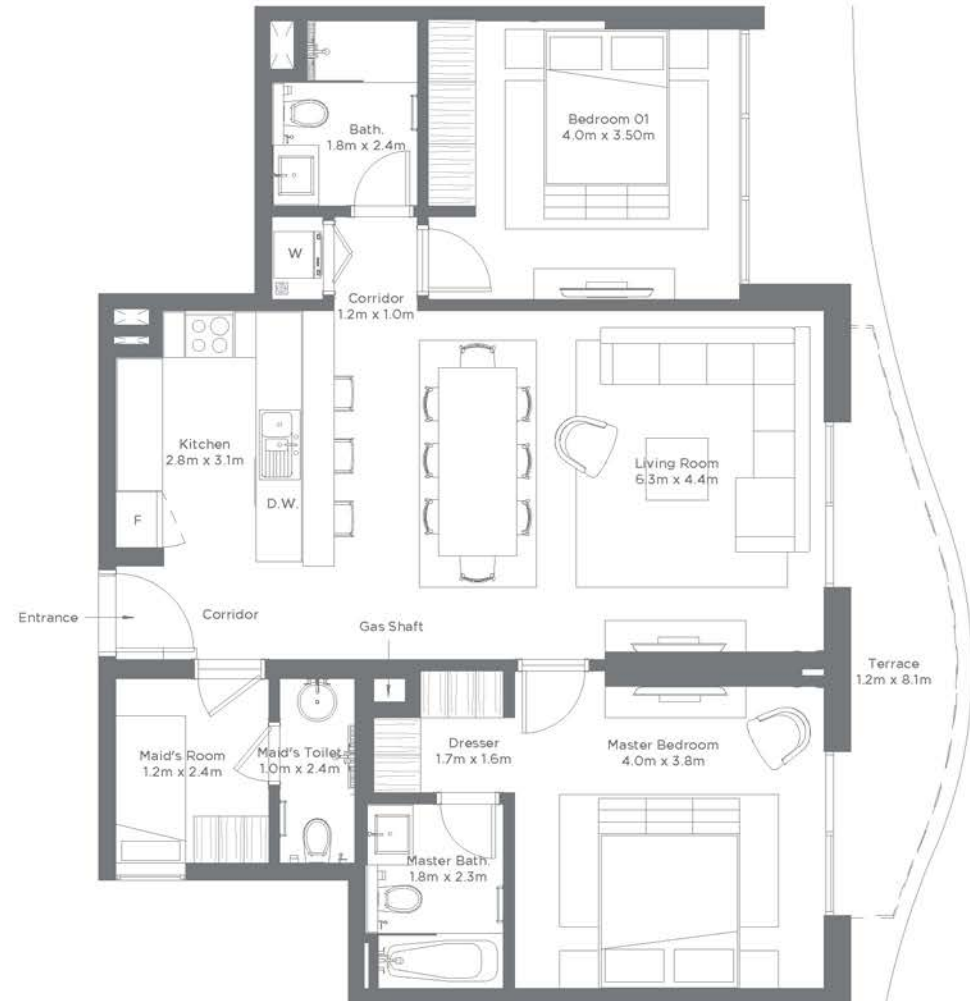
Level 2-5



Level 6-10



Level 11



Units | 216, 316, 416, 516, 609-611, 709-711, 809-811, 909-911, 1009-1011, 1106-1107

Floor plan numbers, square footage, and floor plans are approximate. Final dimensions, square footage and floor plans may vary or may be mirrored. Balcony areas for each type differ.

3

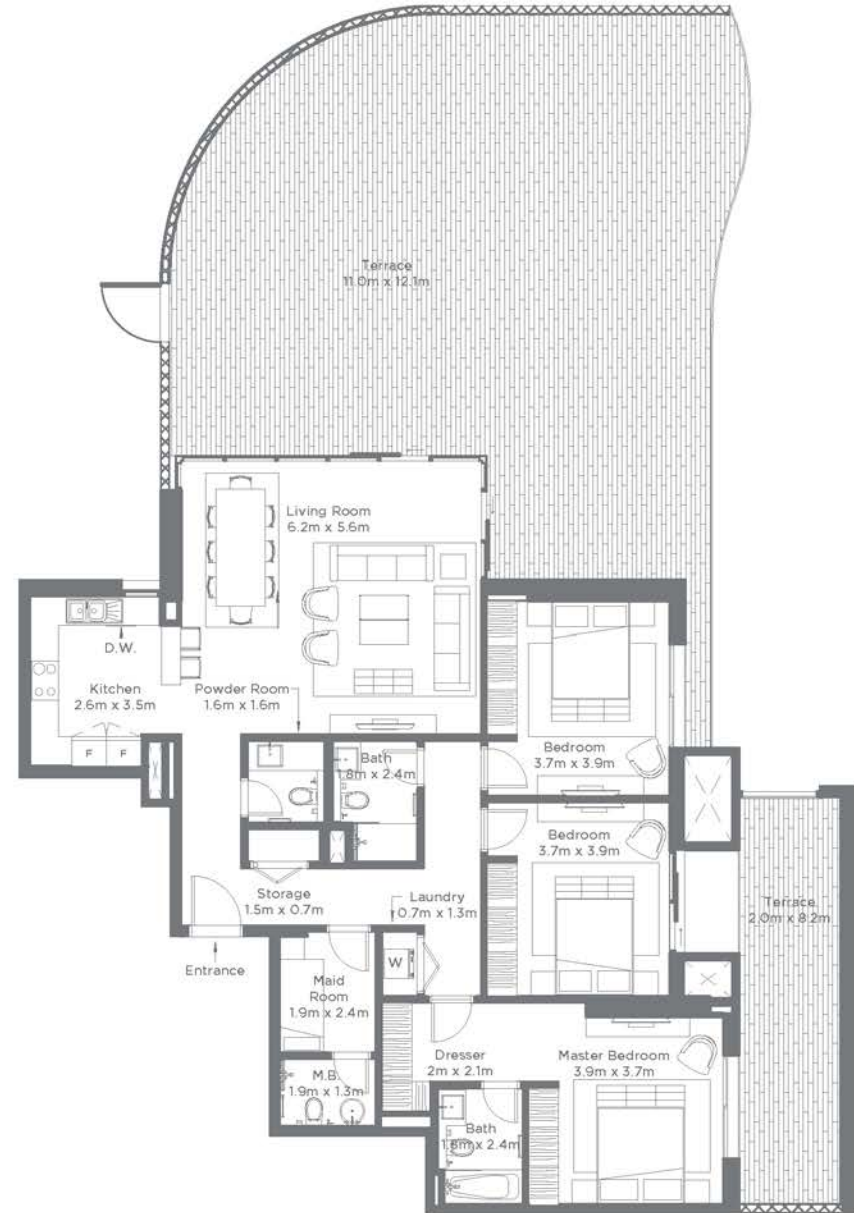
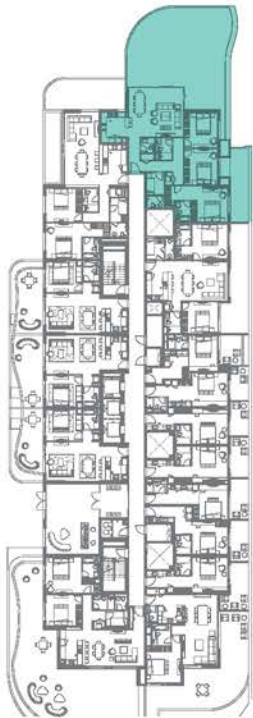
BEDROOM APARTMENT

TYPE 1

Tower 1

| | Sq. f | Sq. mt |
|--------------|---------|--------|
| Unit Area | 1603.82 | 149.00 |
| Balcony Area | 1399.19 | 130.00 |
| Total Area | 3003.01 | 279.00 |

Level 1



Units | 101

Floor plan numbers, square footage, and floor plans are approximate. Final dimensions, square footage and floor plans may vary or may be mirrored. Balcony areas for each type differ.

3

BEDROOM APARTMENT

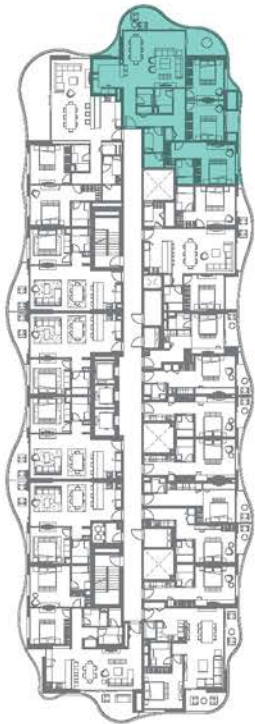
TYPE 1

Tower 1

| | Sq. ft | Sq. mt |
|--------------|---------|--------|
| Unit Area | 1604.00 | 149.00 |
| Balcony Area | 215.00 | 20.00 |
| Total Area | 1819.00 | 169.00 |

Level 2,4,6,8

Level 3,5,7,9



Units | 201, 301, 401, 501, 601, 701, 801, 901

Floor plan numbers, square footage, and floor plans are approximate. Final dimensions, square footage and floor plans may vary or may be mirrored. Balcony areas for each type differ.

DUPLEX

TYPE A

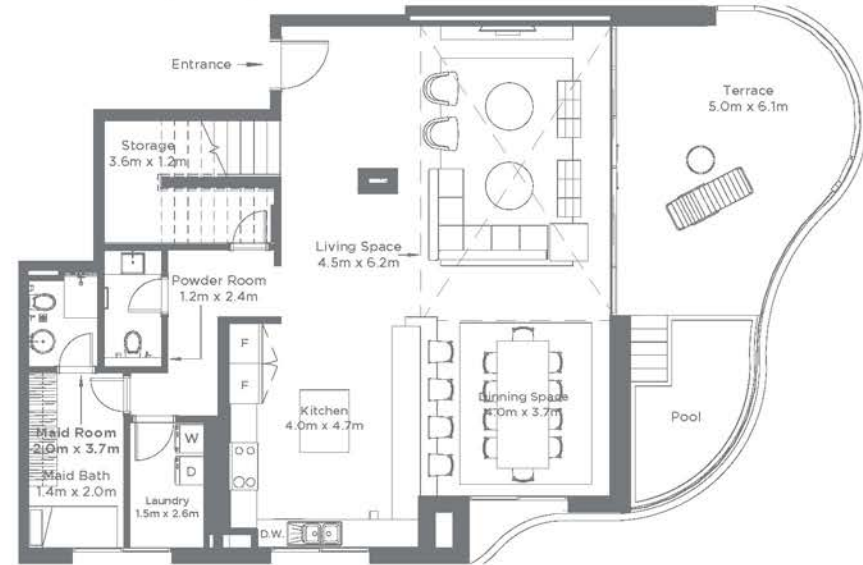
Tower 1

| | Sqf | Sqmt |
|--------------|---------|--------|
| Unit Area | 2809.39 | 261.00 |
| Balcony Area | 408.99 | 38.00 |
| Total Area | 3218.37 | 299.00 |

Level 10



GROUND FLOOR (LEVEL 10)



FIRST FLOOR (LEVEL 11)



Units | 1001

Floor plan numbers, square footage, and floor plans are approximate. Final dimensions, square footage and floor plans may vary or may be mirrored. Balcony areas for each type differ.

DUPLEX

TYPE B

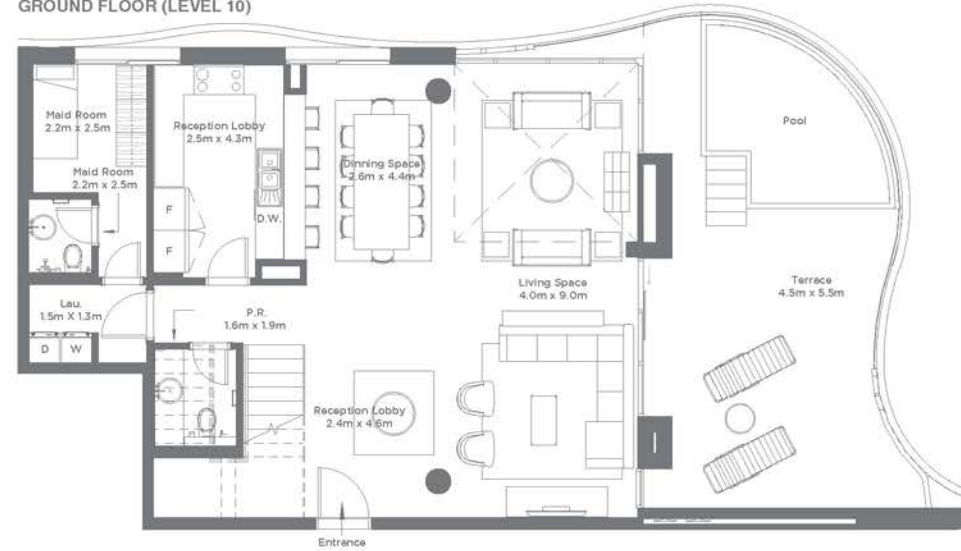
Tower 1

| | Sq.f | Sq.mt |
|--------------|---------|--------|
| Unit Area | 2970.84 | 276.00 |
| Balcony Area | 473.57 | 44.00 |
| Total Area | 3444.41 | 320.00 |

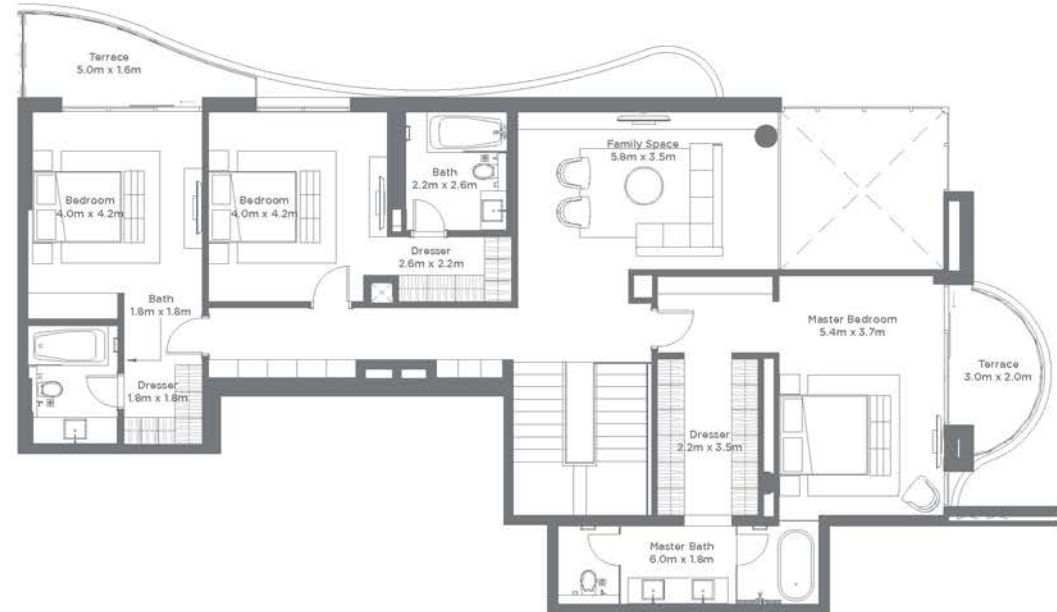
Level 10



GROUND FLOOR (LEVEL 10)



FIRST FLOOR (LEVEL 11)



Units | 1002

Floor plan numbers, square footage, and floor plans are approximate. Final dimensions, square footage and floor plans may vary or may be mirrored. Balcony areas for each type differ.

