

# aeon

DUBAI CREEK HARBOUR



FLOOR PLAN - TOWER 2



EMAAR



# aeon

DUBAI CREEK HARBOUR

TOWER 2

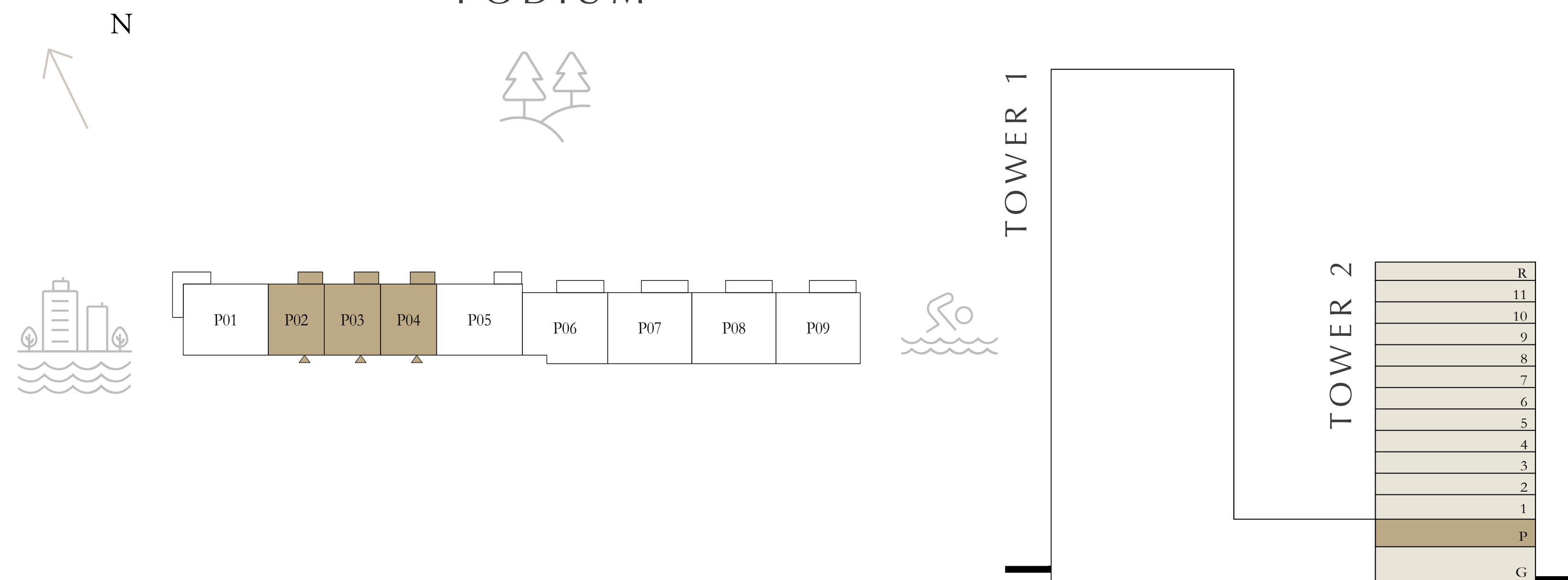
## 1 BEDROOM

	PODIUM	UNIT 02 & 04
SUITE AREA	750.35 SQ.FT.	69.71 SQ.M.
BALCONY AREA	62.75 SQ.FT.	5.83 SQ.M.
TOTAL AREA	813.10 SQ.FT.	75.54 SQ.M.

	PODIUM	UNIT 03
SUITE AREA	751.21 SQ.FT.	69.79 SQ.M.
BALCONY AREA	62.75 SQ.FT.	5.83 SQ.M.
TOTAL AREA	813.96 SQ.FT.	75.62 SQ.M.

KEY PLAN LEVEL  
PODIUM

KEY SECTION



Disclaimer : All dimensions are in imperial and metric, and measured from finish to finish excluding construction tolerances. 2. All materials, dimensions, and drawings are approximate only. 3. Information is subject to change without notice, at developer's absolute discretion. 4. Actual area may vary from the stated area. 5. Drawings not to scale. 6. All images used are for illustrative purposes only and do not represent the actual size, features, specifications, fittings, and furnishings. 7. The developer reserves the right to make revisions / alterations, at it's absolute discretion, without any liability whatsoever.



# aeon

DUBAI CREEK HARBOUR

TOWER 2

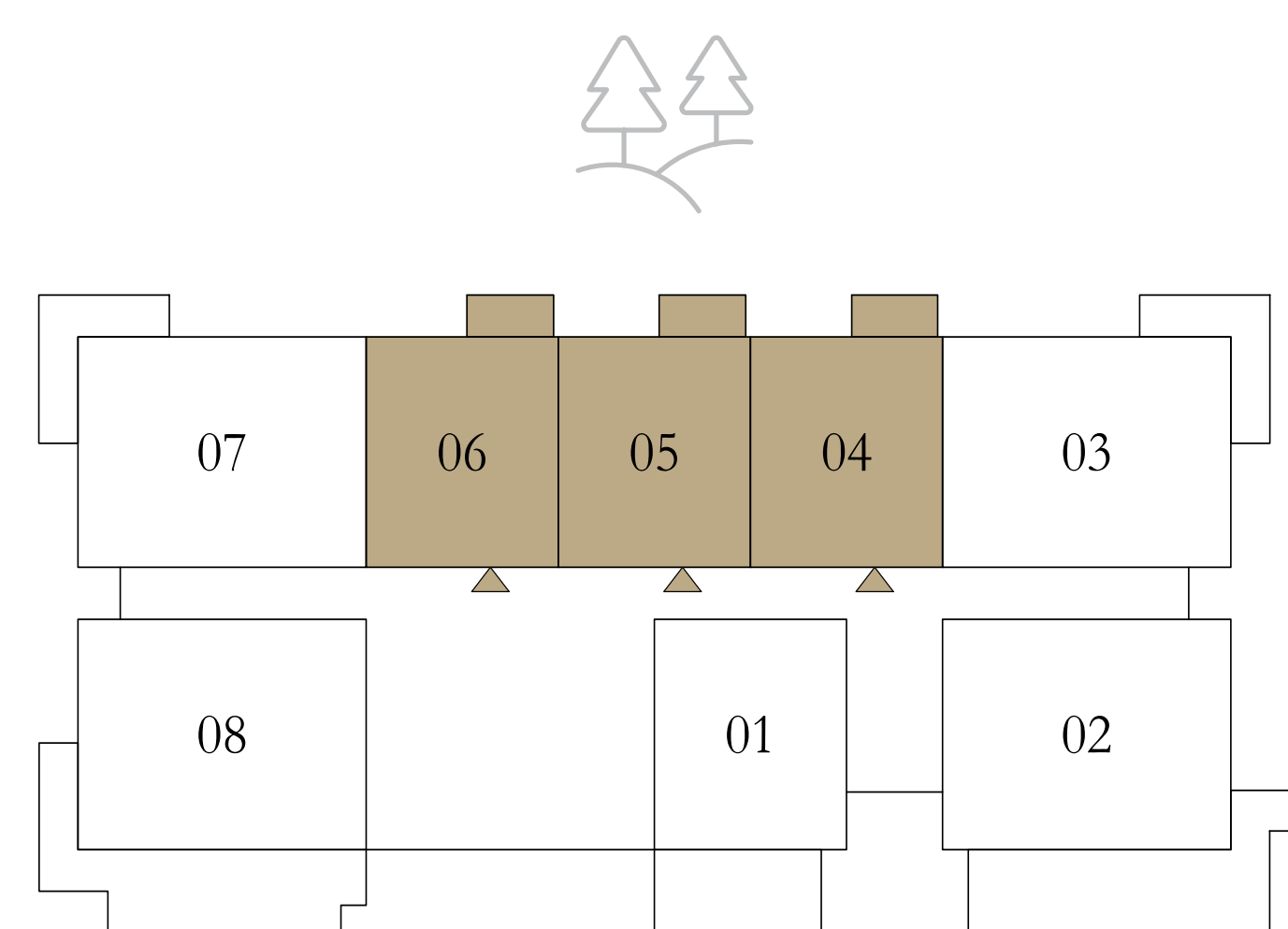
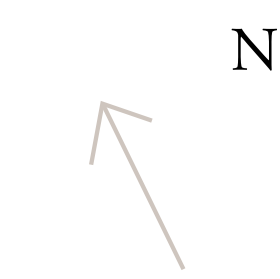
## 1 BEDROOM

LEVEL 1	UNIT 04	
SUITE AREA	750.03 SQ.FT.	69.68 SQ.M.
BALCONY AREA	64.58 SQ.FT.	6.00 SQ.M.
TOTAL AREA	814.61 SQ.FT.	75.68 SQ.M.
LEVEL 1	UNIT 05	
SUITE AREA	751.54 SQ.FT.	69.82 SQ.M.
BALCONY AREA	64.05 SQ.FT.	5.95 SQ.M.
TOTAL AREA	815.59 SQ.FT.	75.77 SQ.M.
LEVEL 1	UNIT 06	
SUITE AREA	750.57 SQ.FT.	69.73 SQ.M.
BALCONY AREA	64.05 SQ.FT.	5.95 SQ.M.
TOTAL AREA	814.62 SQ.FT.	75.68 SQ.M.

KEY PLAN LEVEL

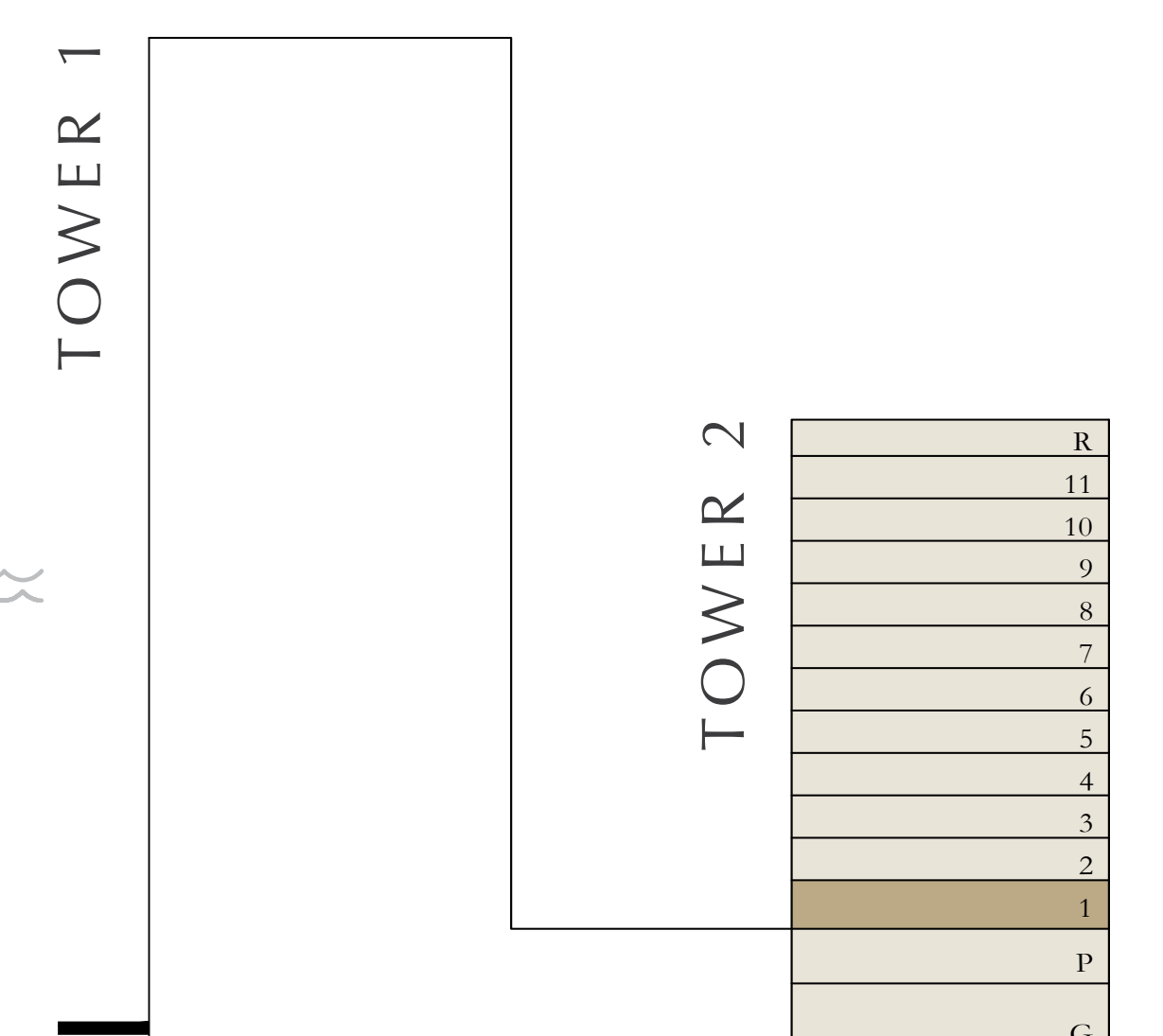
KEY SECTION

1



TOWER 1

TOWER 2



Disclaimer : All dimensions are in imperial and metric, and measured from finish to finish excluding construction tolerances. 2. All materials, dimensions, and drawings are approximate only. 3. Information is subject to change without notice, at developer's absolute discretion. 4. Actual area may vary from the stated area. 5. Drawings not to scale. 6. All images used are for illustrative purposes only and do not represent the actual size, features, specifications, fittings, and furnishings. 7. The developer reserves the right to make revisions / alterations, at it's absolute discretion, without any liability whatsoever.



# aeon

DUBAI CREEK HARBOUR

TOWER 2

## 1 BEDROOM

LEVELS 2-11 UNIT 01 & 06

SUITE AREA	750.57 SQ.FT.	69.73 SQ.M.
BALCONY AREA	64.05 SQ.FT.	5.95 SQ.M.
TOTAL AREA	814.62 SQ.FT.	75.68 SQ.M.

LEVELS 2-11 UNIT 04

SUITE AREA	750.03 SQ.FT.	69.68 SQ.M.
BALCONY AREA	64.58 SQ.FT.	6.00 SQ.M.
TOTAL AREA	814.61 SQ.FT.	75.68 SQ.M.

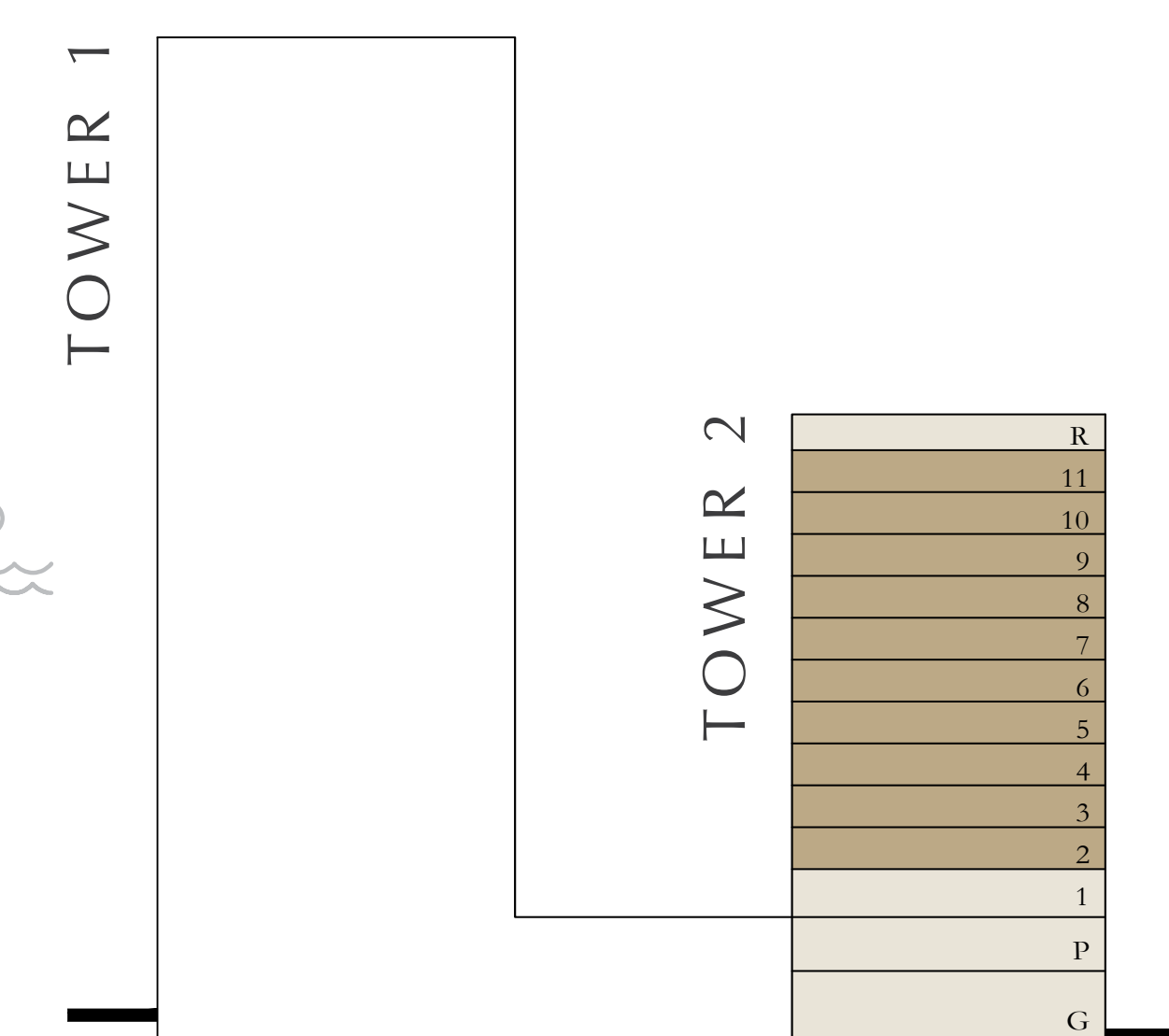
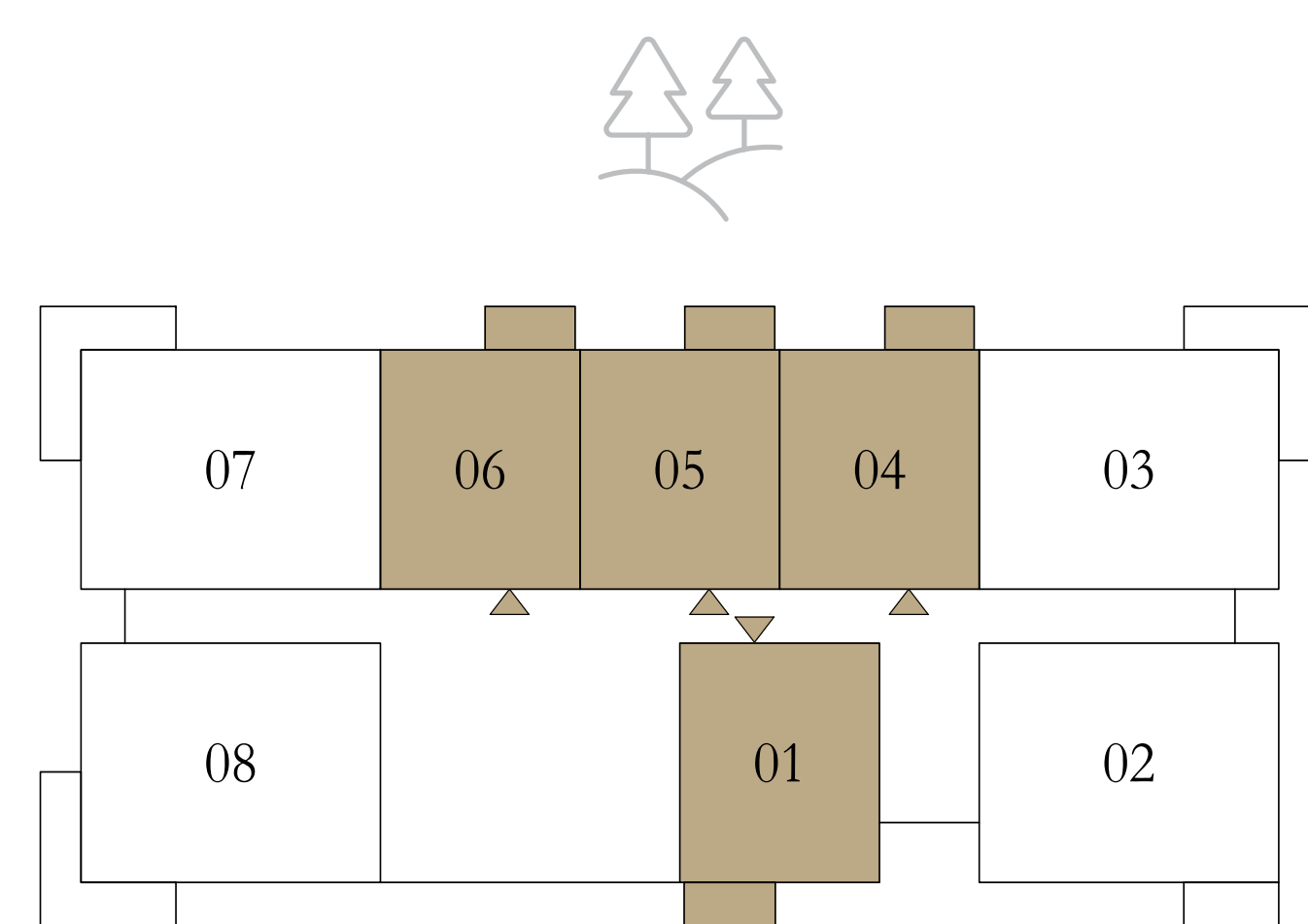
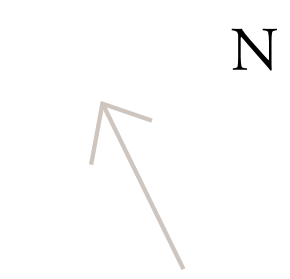
LEVELS 2-11 UNIT 05

SUITE AREA	751.54 SQ.FT.	69.82 SQ.M.
BALCONY AREA	64.05 SQ.FT.	5.95 SQ.M.
TOTAL AREA	815.59 SQ.FT.	75.77 SQ.M.

KEY PLAN LEVEL

2-11

KEY SECTION



Disclaimer : All dimensions are in imperial and metric, and measured from finish to finish excluding construction tolerances. 2. All materials, dimensions, and drawings are approximate only. 3. Information is subject to change without notice, at developer's absolute discretion. 4. Actual area may vary from the stated area. 5. Drawings not to scale. 6. All images used are for illustrative purposes only and do not represent the actual size, features, specifications, fittings, and furnishings. 7. The developer reserves the right to make revisions / alterations, at it's absolute discretion, without any liability whatsoever.



# aeon

DUBAI CREEK HARBOUR

TOWER 2

## 1 BEDROOM

LEVEL 1

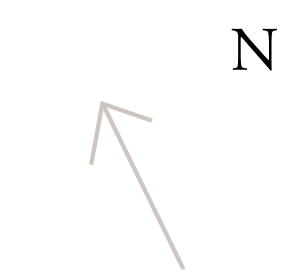
UNIT 01

SUITE AREA	750.57 SQ.FT.	69.73 SQ.M.
BALCONY AREA	239.93 SQ.FT.	22.29 SQ.M.
TOTAL AREA	990.50 SQ.FT.	92.02 SQ.M.

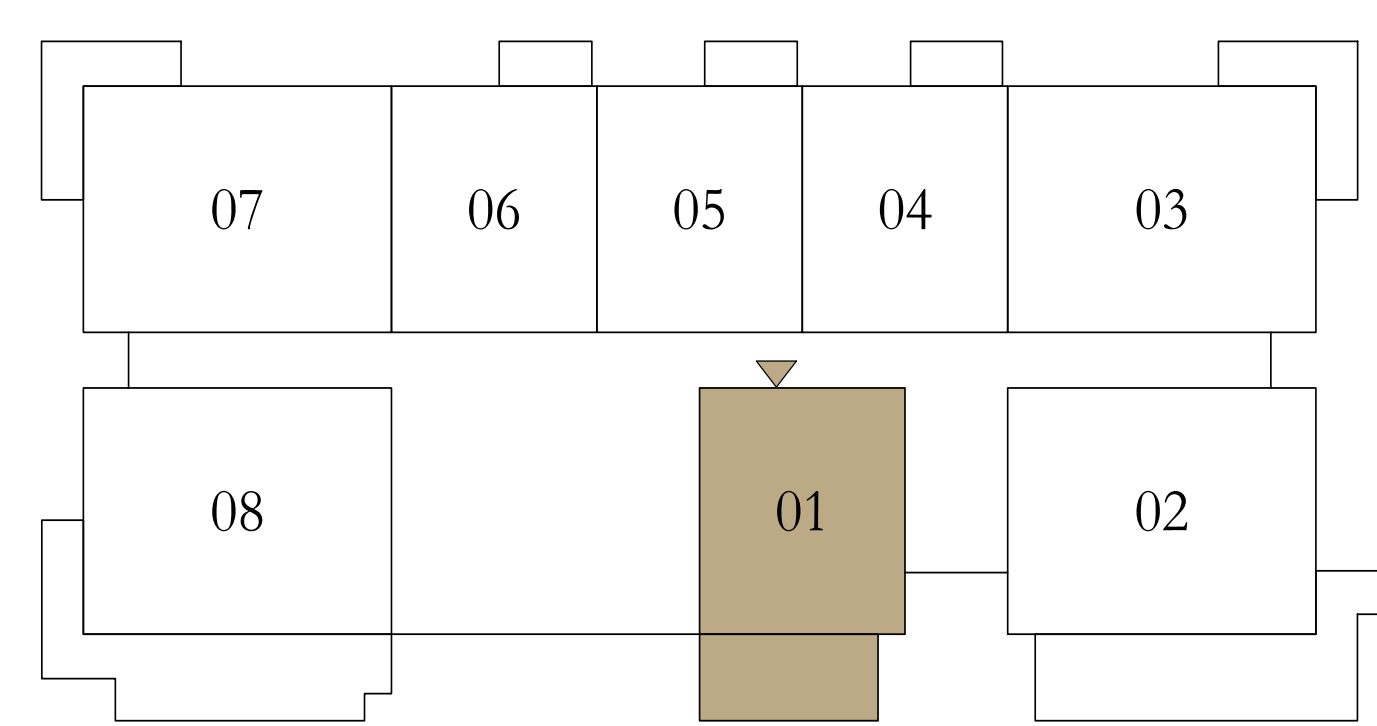


KEY PLAN LEVEL

KEY SECTION

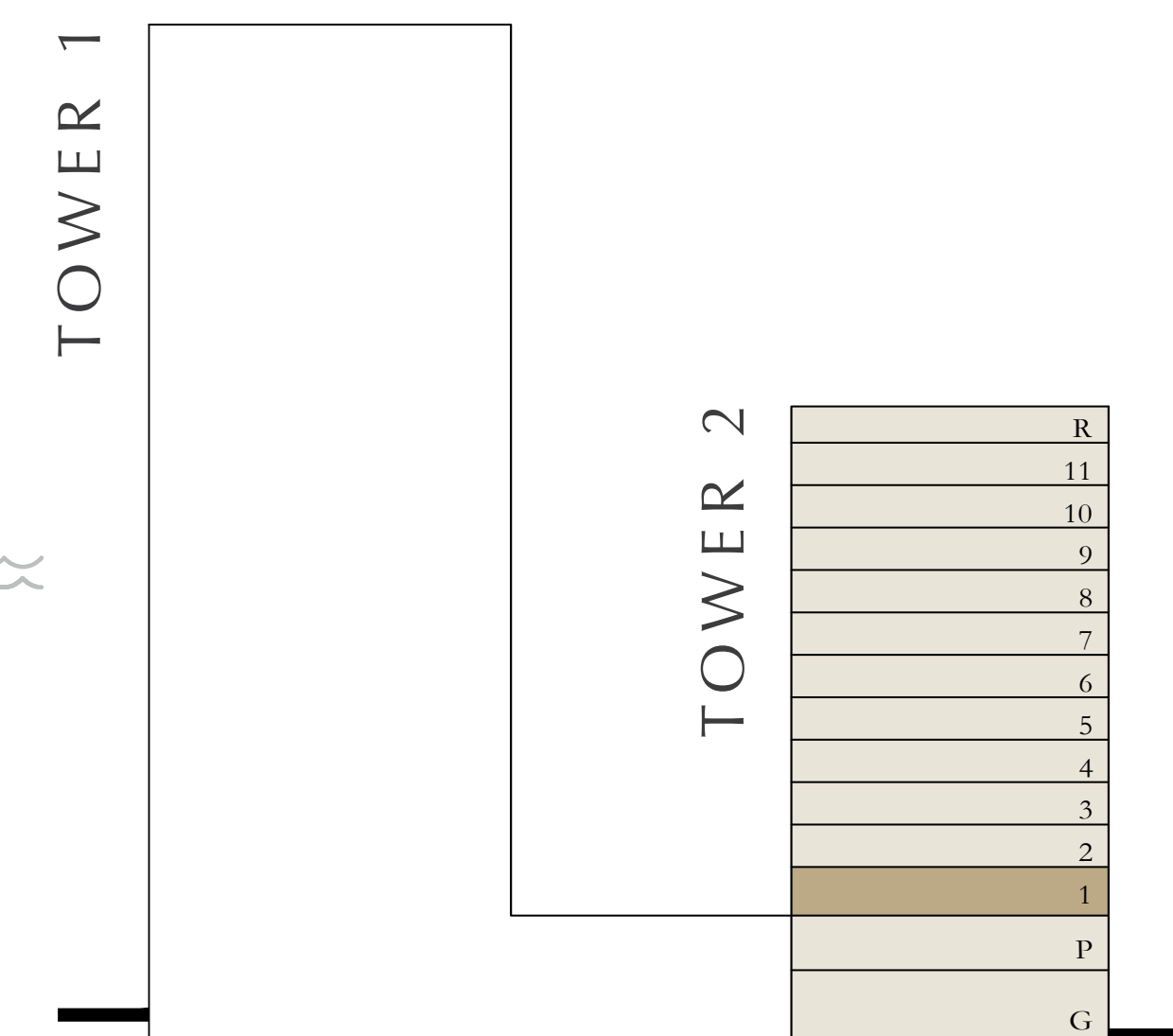


1



TOWER 1

TOWER 2



Disclaimer : All dimensions are in imperial and metric, and measured from finish to finish excluding construction tolerances. 2. All materials, dimensions, and drawings are approximate only. 3. Information is subject to change without notice, at developer's absolute discretion. 4. Actual area may vary from the stated area. 5. Drawings not to scale. 6. All images used are for illustrative purposes only and do not represent the actual size, features, specifications, fittings, and furnishings. 7. The developer reserves the right to make revisions / alterations, at it's absolute discretion, without any liability whatsoever.



# aeon

DUBAI CREEK HARBOUR

TOWER 2

## 2 BEDROOMS

PODIUM

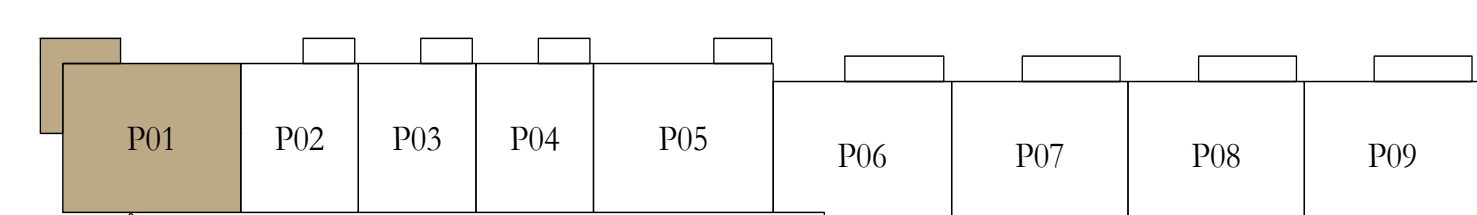
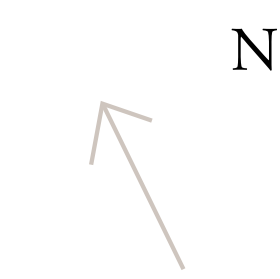
UNIT 01

SUITE AREA	1171.76 SQ.FT.	108.86 SQ.M.
BALCONY AREA	167.92 SQ.FT.	15.60 SQ.M.
TOTAL AREA	1339.68 SQ.FT.	124.46 SQ.M.



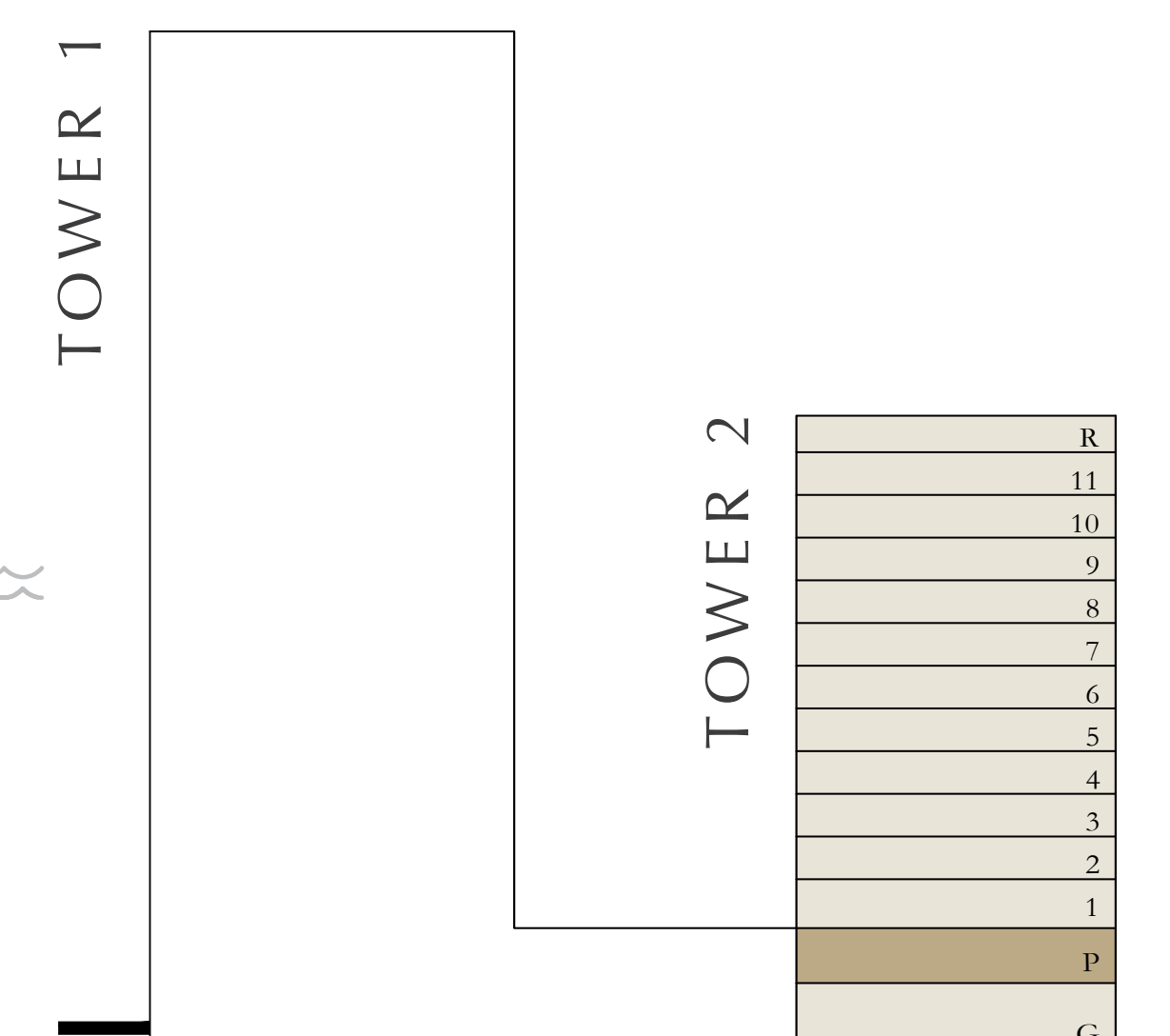
KEY PLAN LEVEL  
PODIUM

KEY SECTION



TOWER 1

TOWER 2



Disclaimer : All dimensions are in imperial and metric, and measured from finish to finish excluding construction tolerances. 2. All materials, dimensions, and drawings are approximate only. 3. Information is subject to change without notice, at developer's absolute discretion. 4. Actual area may vary from the stated area. 5. Drawings not to scale. 6. All images used are for illustrative purposes only and do not represent the actual size, features, specifications, fittings, and furnishings. 7. The developer reserves the right to make revisions / alterations, at it's absolute discretion, without any liability whatsoever.



# aeon

DUBAI CREEK HARBOUR

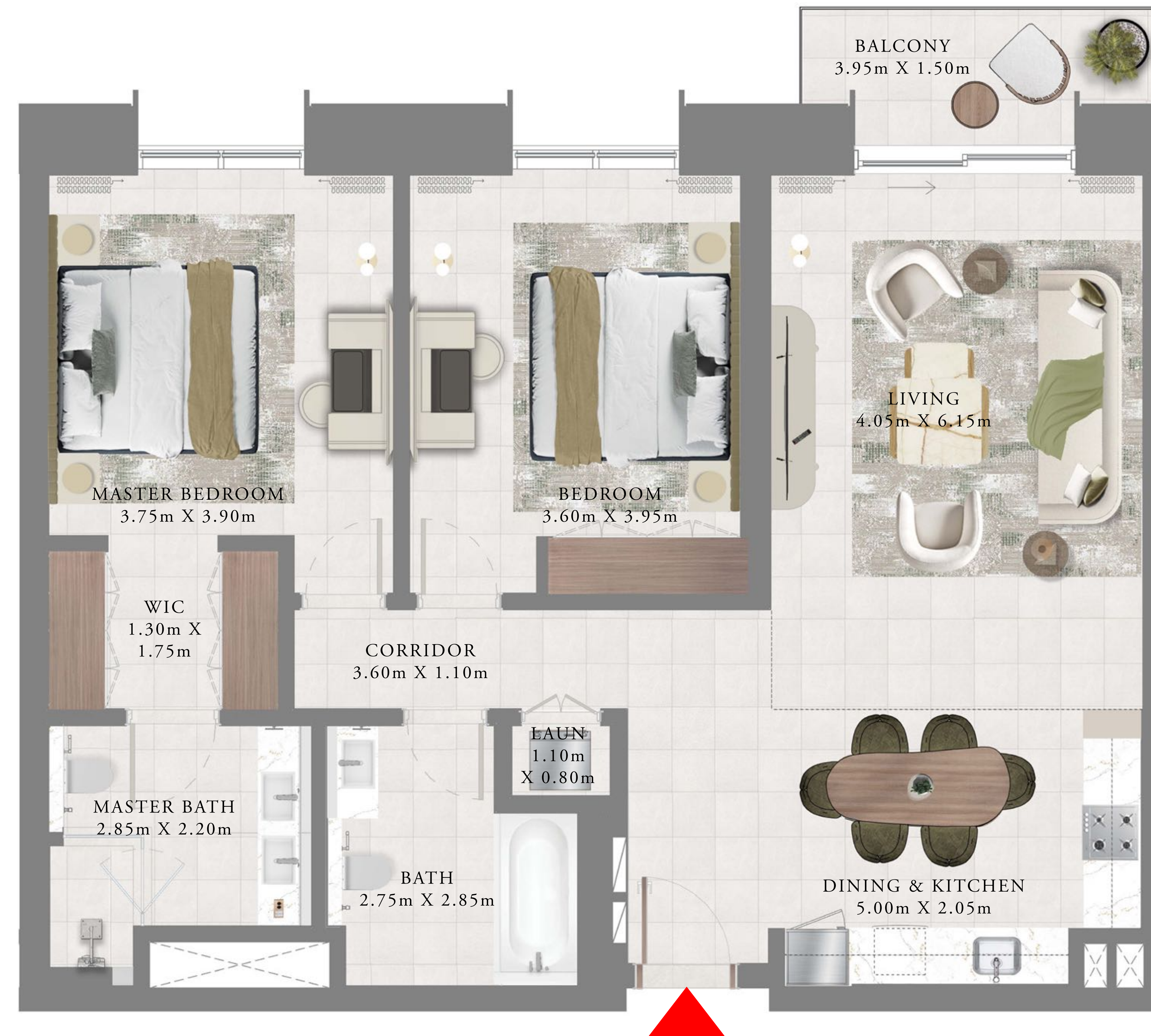
TOWER 2

## 2 BEDROOMS

PODIUM

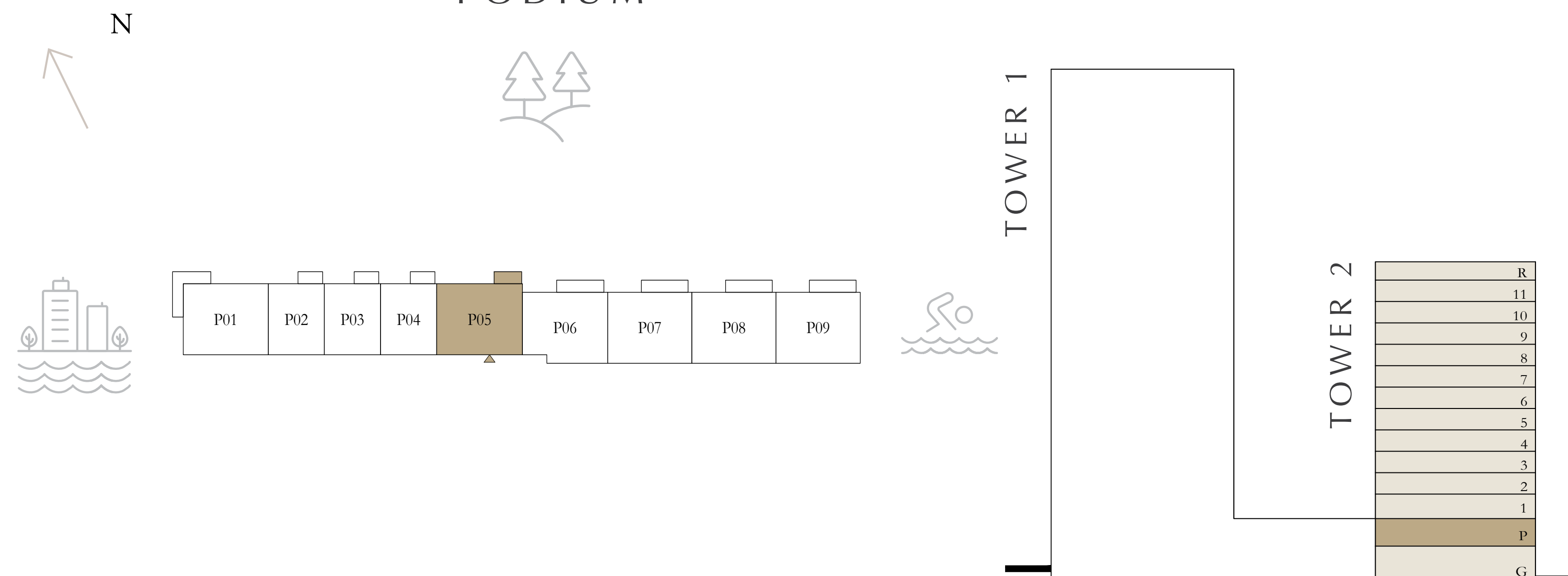
UNIT 05

SUITE AREA	1173.70 SQ.FT.	109.04 SQ.M.
BALCONY AREA	70.29 SQ.FT.	6.53 SQ.M.
TOTAL AREA	1243.99 SQ.FT.	115.57 SQ.M.



KEY PLAN LEVEL  
PODIUM

KEY SECTION



Disclaimer : All dimensions are in imperial and metric, and measured from finish to finish excluding construction tolerances. 2. All materials, dimensions, and drawings are approximate only. 3. Information is subject to change without notice, at developer's absolute discretion. 4. Actual area may vary from the stated area. 5. Drawings not to scale. 6. All images used are for illustrative purposes only and do not represent the actual size, features, specifications, fittings, and furnishings. 7. The developer reserves the right to make revisions / alterations, at it's absolute discretion, without any liability whatsoever.



# aeon

DUBAI CREEK HARBOUR

TOWER 2

## 2 BEDROOMS

PODIUM

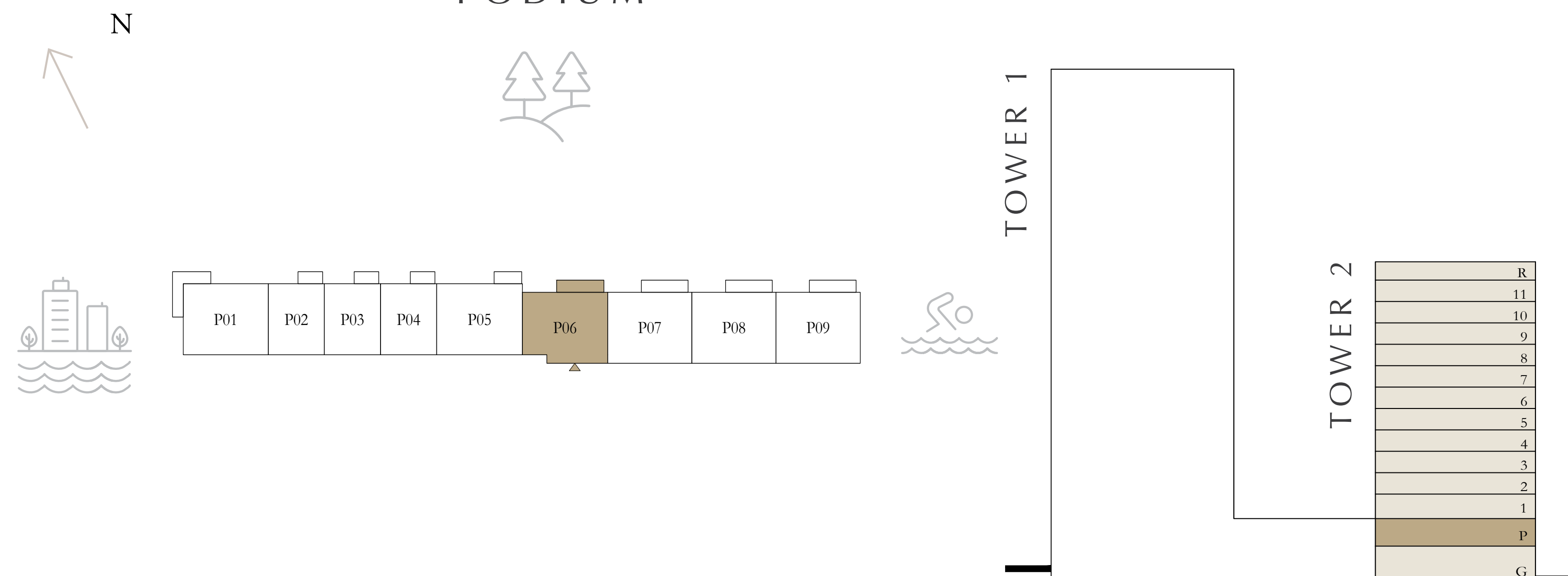
UNIT 06

SUITE AREA	1157.34 SQ.FT.	107.52 SQ.M.
BALCONY AREA	115.39 SQ.FT.	10.72 SQ.M.
TOTAL AREA	1272.73 SQ.FT.	118.24 SQ.M.



KEY PLAN LEVEL  
PODIUM

KEY SECTION



Disclaimer : All dimensions are in imperial and metric, and measured from finish to finish excluding construction tolerances. 2. All materials, dimensions, and drawings are approximate only. 3. Information is subject to change without notice, at developer's absolute discretion. 4. Actual area may vary from the stated area. 5. Drawings not to scale. 6. All images used are for illustrative purposes only and do not represent the actual size, features, specifications, fittings, and furnishings. 7. The developer reserves the right to make revisions / alterations, at it's absolute discretion, without any liability whatsoever.



# aeon

DUBAI CREEK HARBOUR

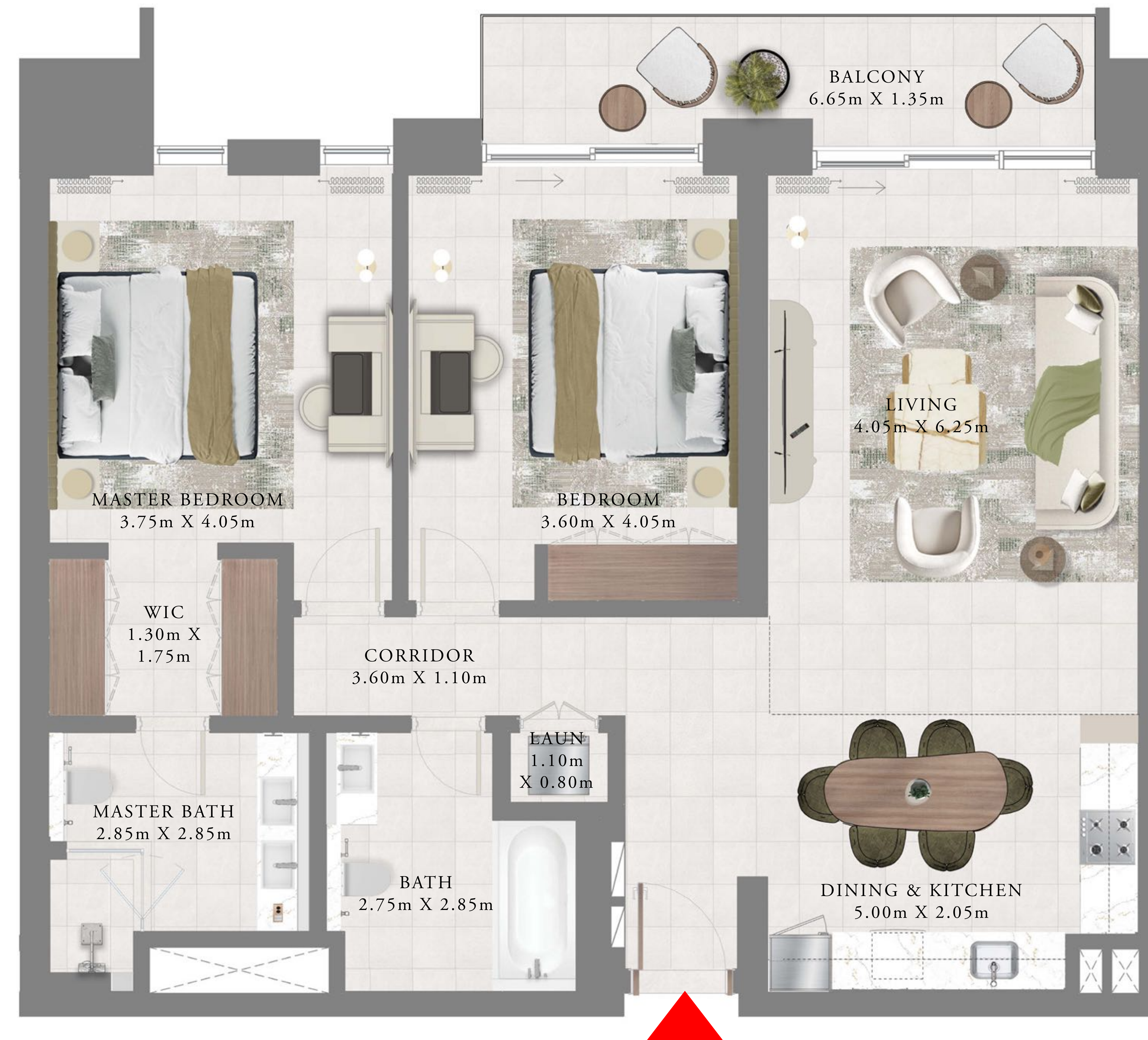
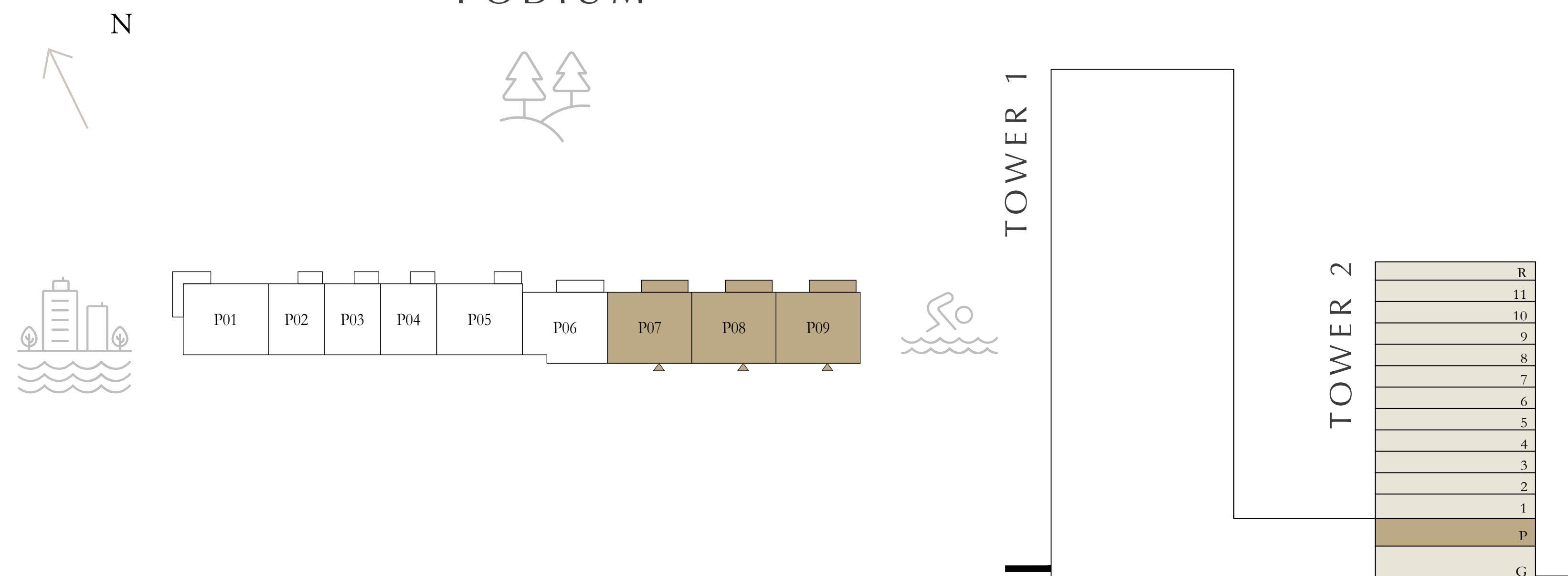
TOWER 2

## 2 BEDROOMS

	PODIUM	UNIT 07
SUITE AREA	1177.03 SQ.FT.	109.35 SQ.M.
BALCONY AREA	112.16 SQ.FT.	10.42 SQ.M.
TOTAL AREA	1289.19 SQ.FT.	119.77 SQ.M.
	PODIUM	UNIT 08
SUITE AREA	1174.99 SQ.FT.	109.16 SQ.M.
BALCONY AREA	114.21 SQ.FT.	10.61 SQ.M.
TOTAL AREA	1289.20 SQ.FT.	119.77 SQ.M.
	PODIUM	UNIT 09
SUITE AREA	1177.14 SQ.FT.	109.36 SQ.M.
BALCONY AREA	112.16 SQ.FT.	10.42 SQ.M.
TOTAL AREA	1289.30 SQ.FT.	119.78 SQ.M.

KEY PLAN LEVEL  
PODIUM

KEY SECTION



Disclaimer : All dimensions are in imperial and metric, and measured from finish to finish excluding construction tolerances. 2. All materials, dimensions, and drawings are approximate only. 3. Information is subject to change without notice, at developer's absolute discretion. 4. Actual area may vary from the stated area. 5. Drawings not to scale. 6. All images used are for illustrative purposes only and do not represent the actual size, features, specifications, fittings, and furnishings. 7. The developer reserves the right to make revisions / alterations, at it's absolute discretion, without any liability whatsoever.



# aeon

DUBAI CREEK HARBOUR

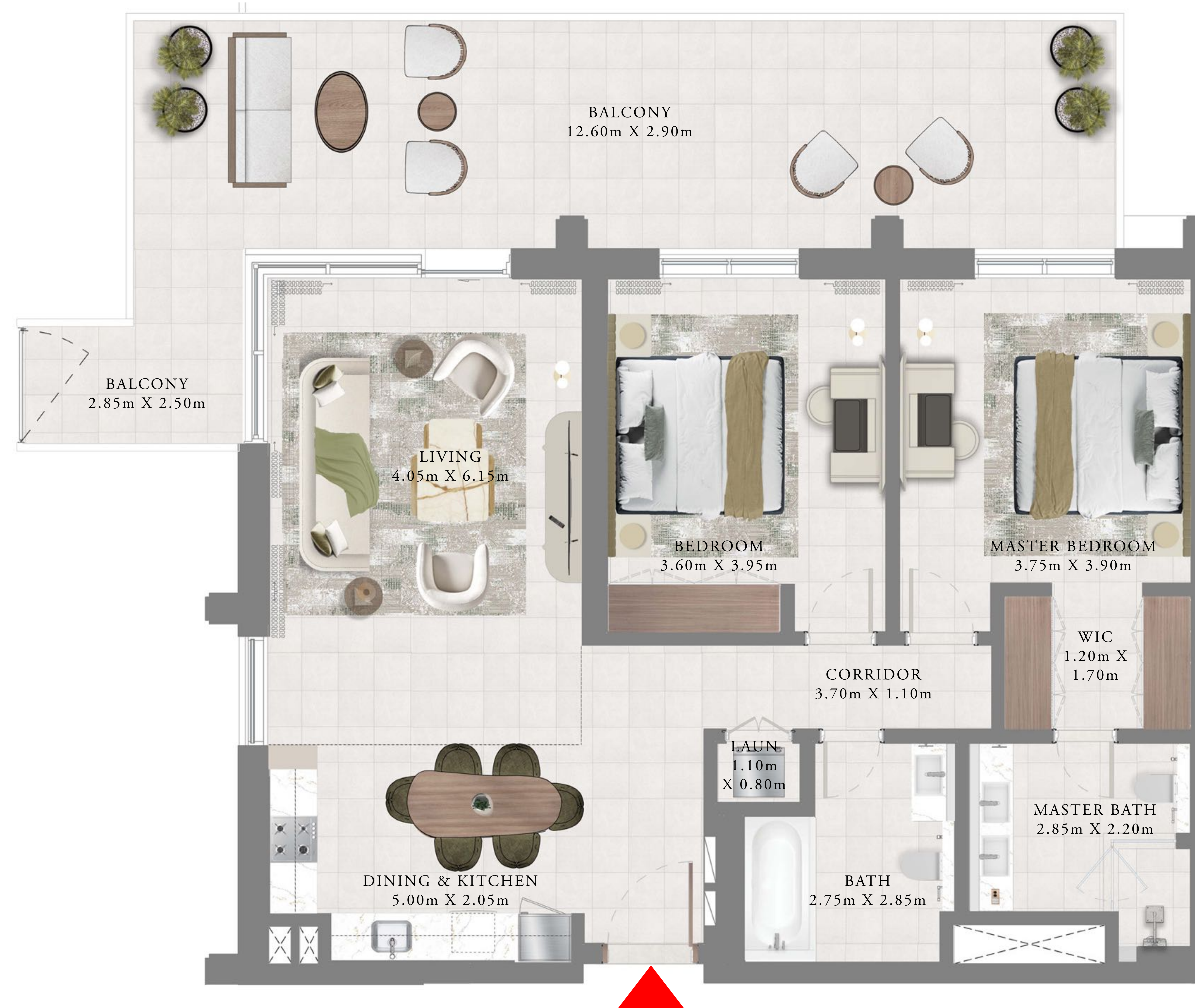
TOWER 2

2 BEDROOMS

LEVEL 1

UNIT 02

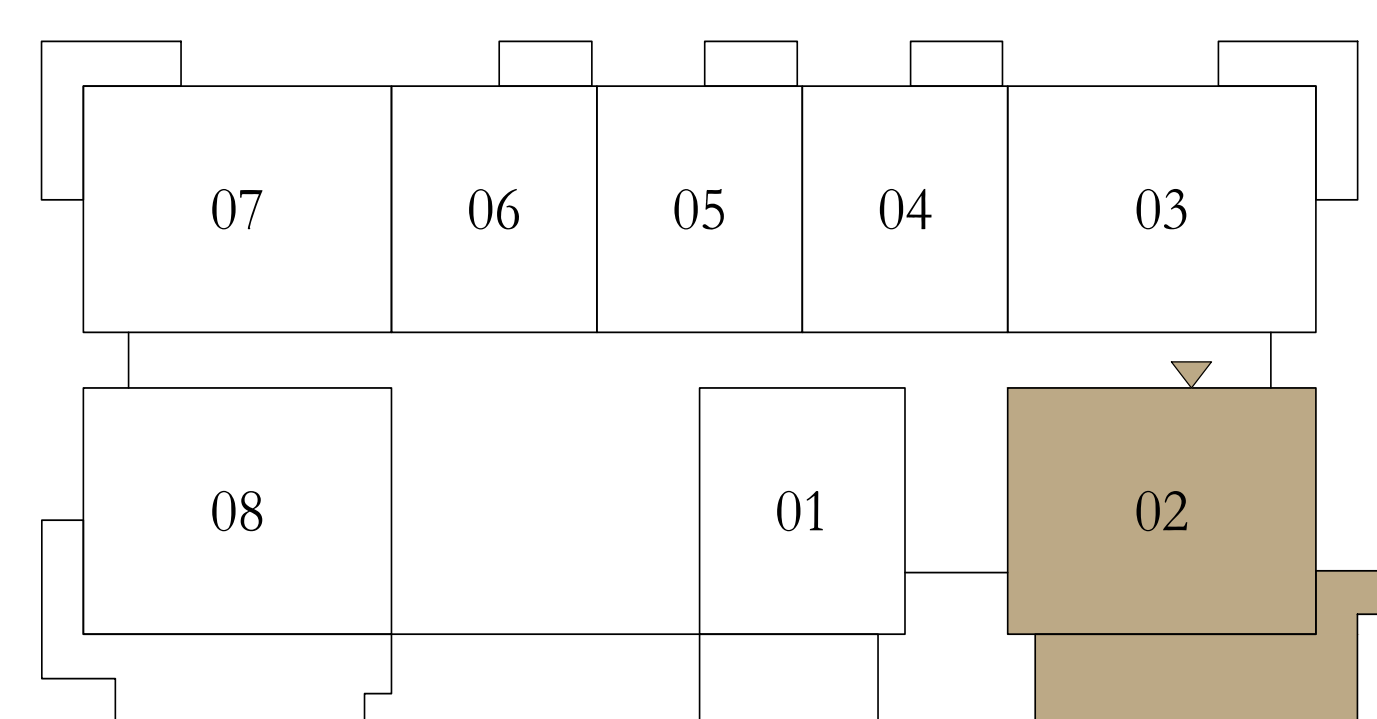
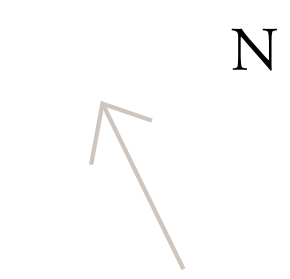
SUITE AREA	1161.53 SQ.FT.	107.91 SQ.M.
BALCONY AREA	501.81 SQ.FT.	46.62 SQ.M.
TOTAL AREA	1663.34 SQ.FT.	154.53 SQ.M.



KEY PLAN LEVEL

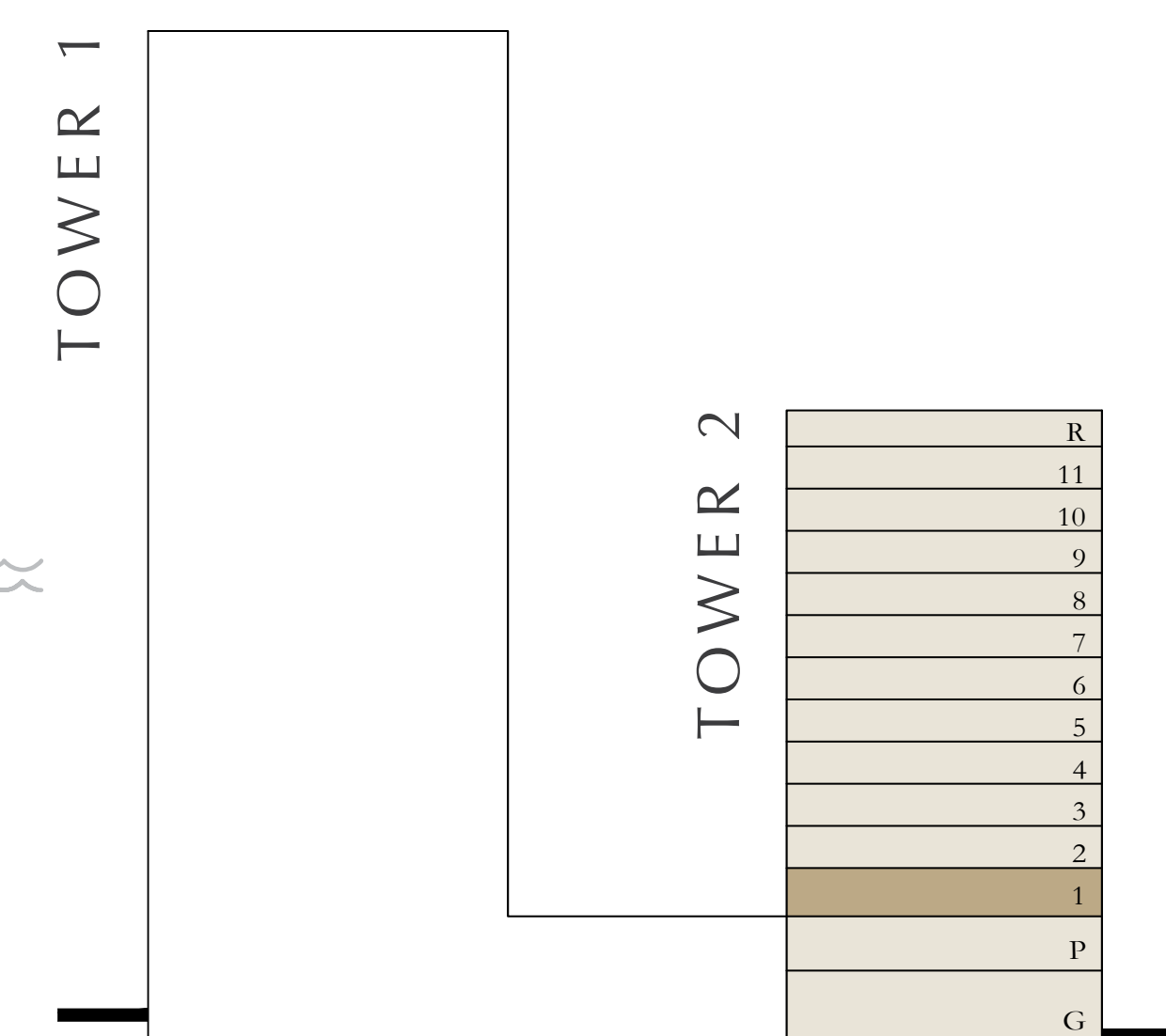
1

KEY SECTION



TOWER 1

TOWER 2



Disclaimer : All dimensions are in imperial and metric, and measured from finish to finish excluding construction tolerances. 2. All materials, dimensions, and drawings are approximate only. 3. Information is subject to change without notice, at developer's absolute discretion. 4. Actual area may vary from the stated area. 5. Drawings not to scale. 6. All images used are for illustrative purposes only and do not represent the actual size, features, specifications, fittings, and furnishings. 7. The developer reserves the right to make revisions / alterations, at it's absolute discretion, without any liability whatsoever.



# aeon

DUBAI CREEK HARBOUR

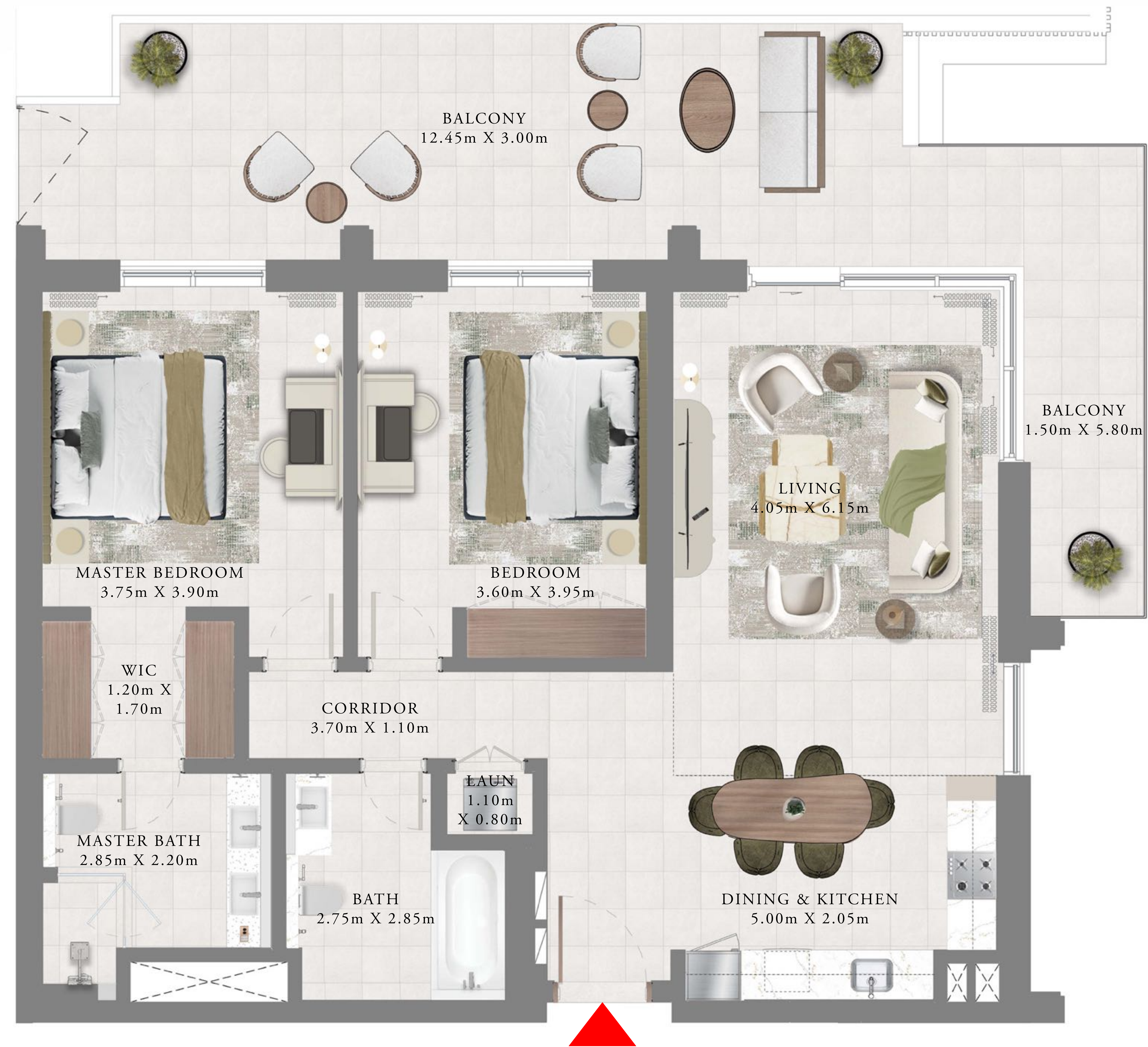
TOWER 2

## 2 BEDROOMS

LEVEL 1

UNIT 08

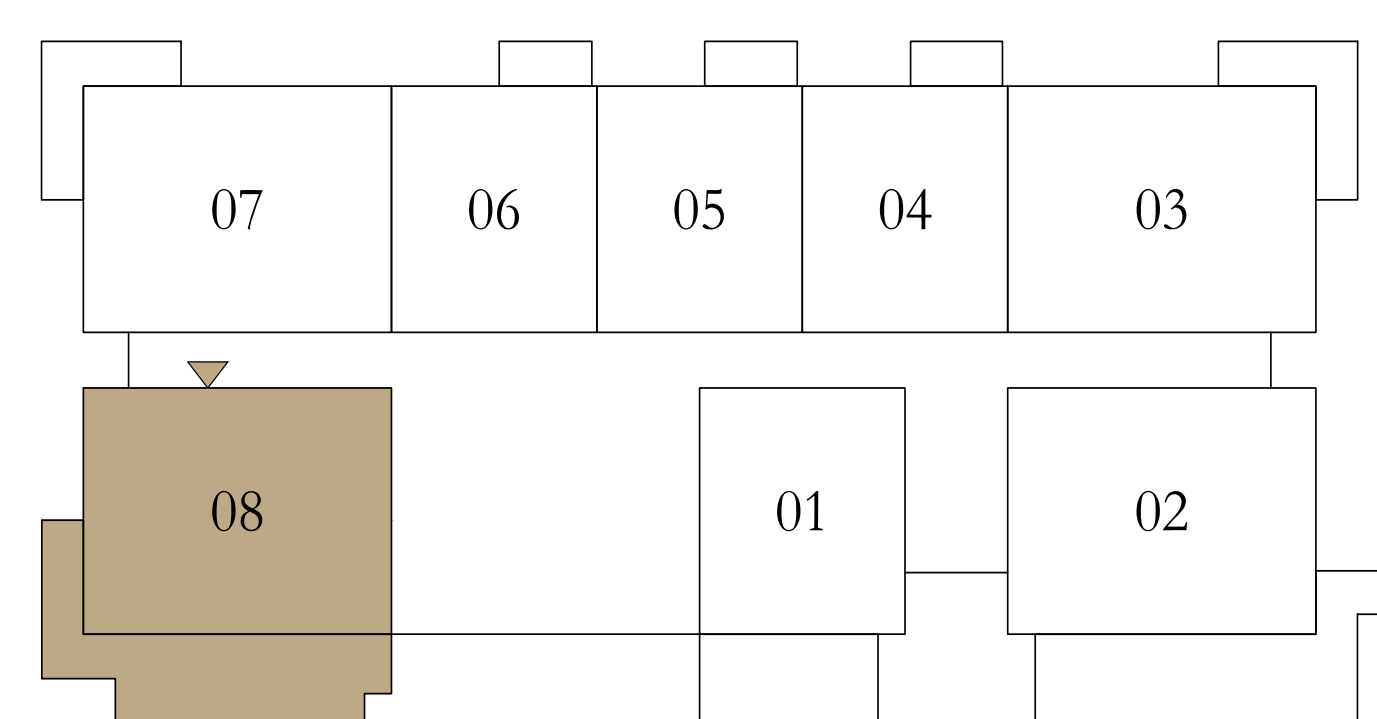
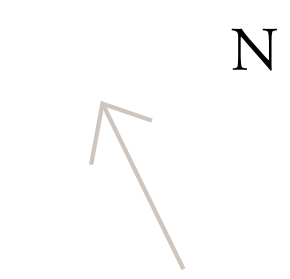
SUITE AREA	1161.53 SQ.FT.	107.91 SQ.M.
BALCONY AREA	492.56 SQ.FT.	45.76 SQ.M.
TOTAL AREA	1654.09 SQ.FT.	153.67 SQ.M.



KEY PLAN LEVEL

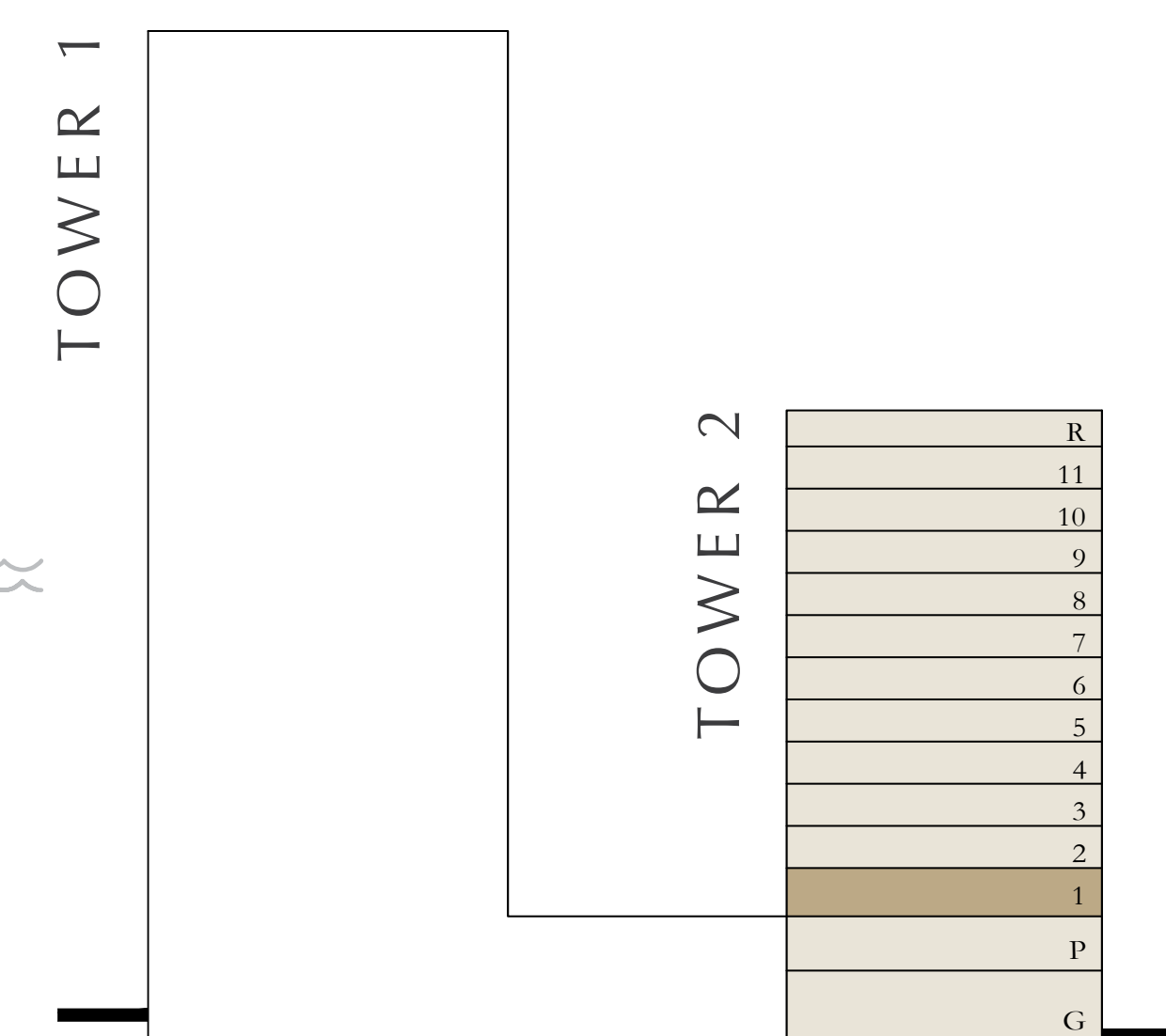
1

KEY SECTION



TOWER 1

TOWER 2



Disclaimer : All dimensions are in imperial and metric, and measured from finish to finish excluding construction tolerances. 2. All materials, dimensions, and drawings are approximate only. 3. Information is subject to change without notice, at developer's absolute discretion. 4. Actual area may vary from the stated area. 5. Drawings not to scale. 6. All images used are for illustrative purposes only and do not represent the actual size, features, specifications, fittings, and furnishings. 7. The developer reserves the right to make revisions / alterations, at it's absolute discretion, without any liability whatsoever.



# aeon

DUBAI CREEK HARBOUR

TOWER 2

## 2 BEDROOMS

LEVELS 2-11

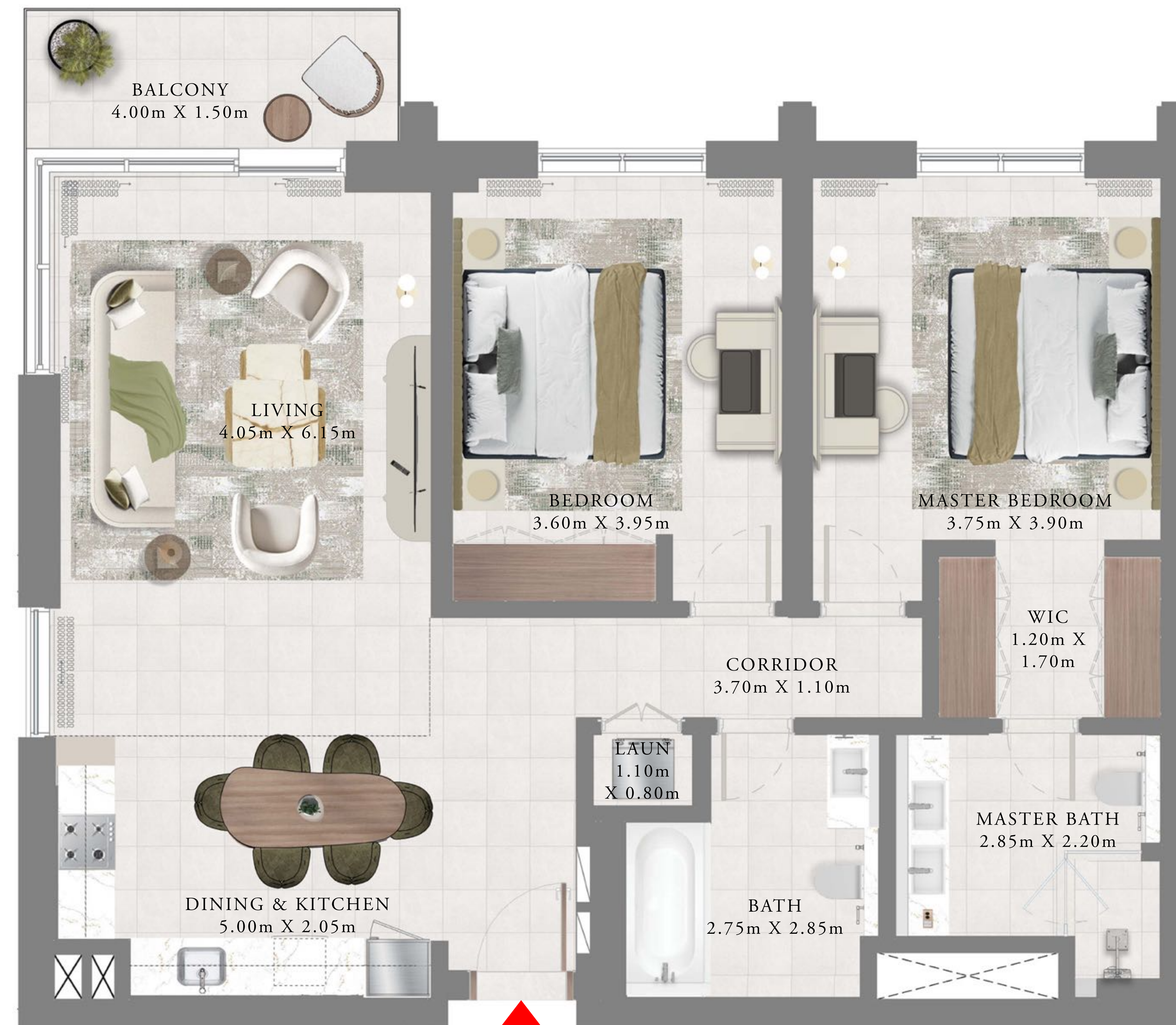
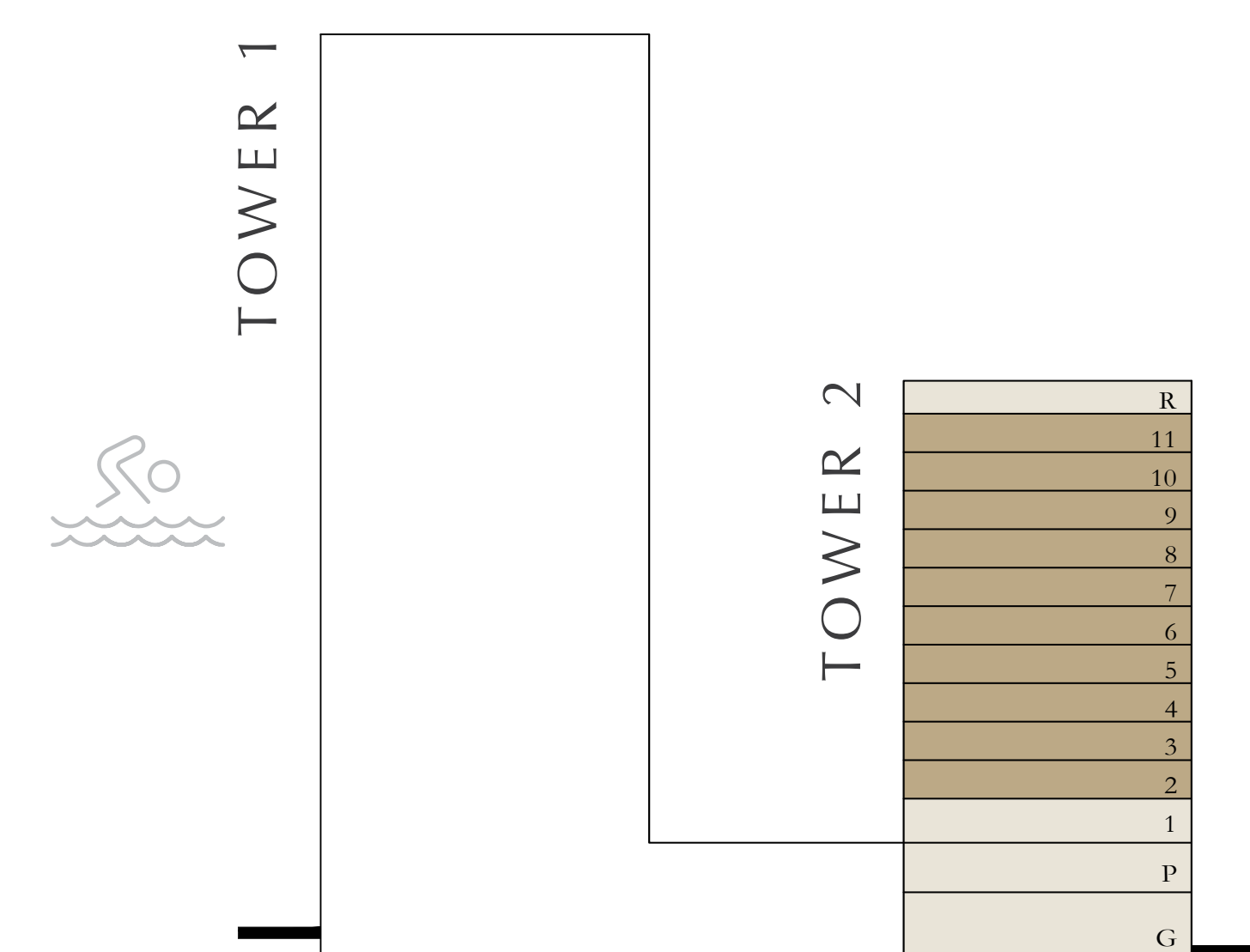
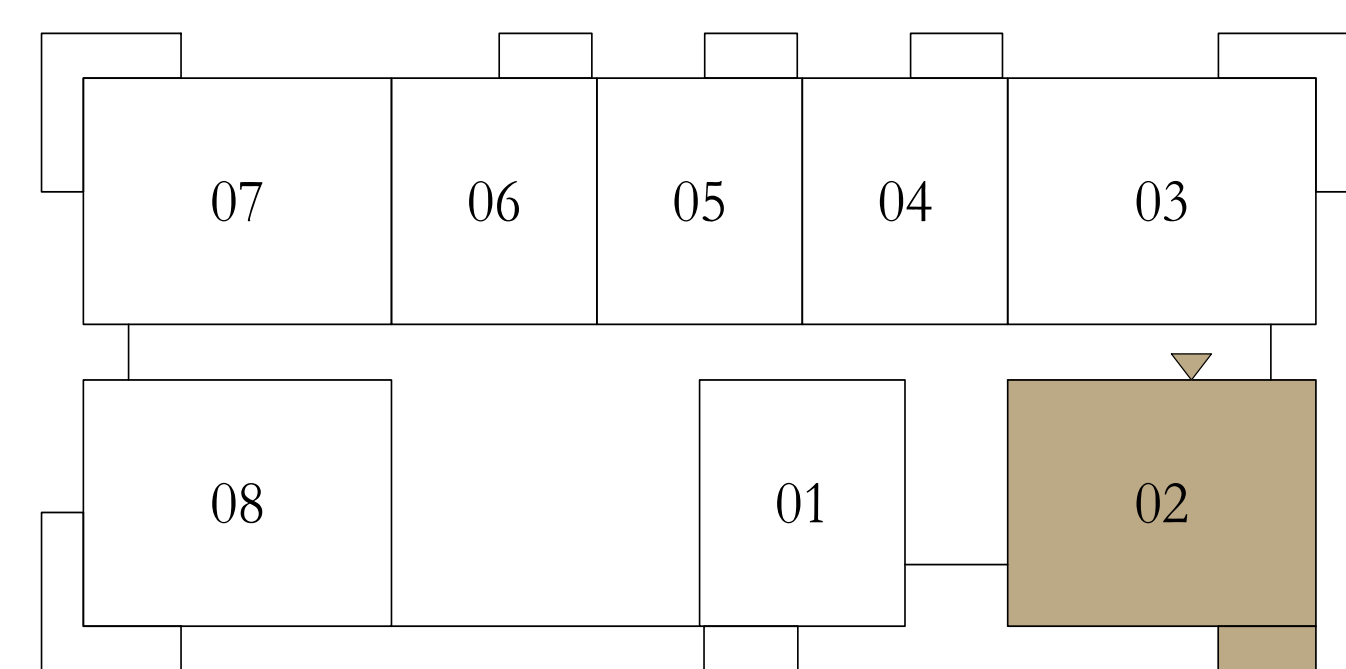
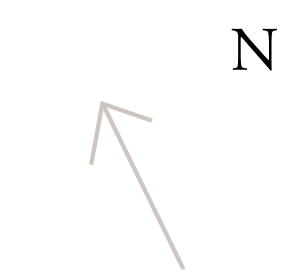
UNIT 02

SUITE AREA	1161.53 SQ.FT.	107.91 SQ.M.
BALCONY AREA	71.47 SQ.FT.	6.64 SQ.M.
TOTAL AREA	1233.00 SQ.FT.	114.55 SQ.M.

KEY PLAN LEVEL

2-11

KEY SECTION



Disclaimer : All dimensions are in imperial and metric, and measured from finish to finish excluding construction tolerances. 2. All materials, dimensions, and drawings are approximate only. 3. Information is subject to change without notice, at developer's absolute discretion. 4. Actual area may vary from the stated area. 5. Drawings not to scale. 6. All images used are for illustrative purposes only and do not represent the actual size, features, specifications, fittings, and furnishings. 7. The developer reserves the right to make revisions / alterations, at it's absolute discretion, without any liability whatsoever.



# aeon

DUBAI CREEK HARBOUR

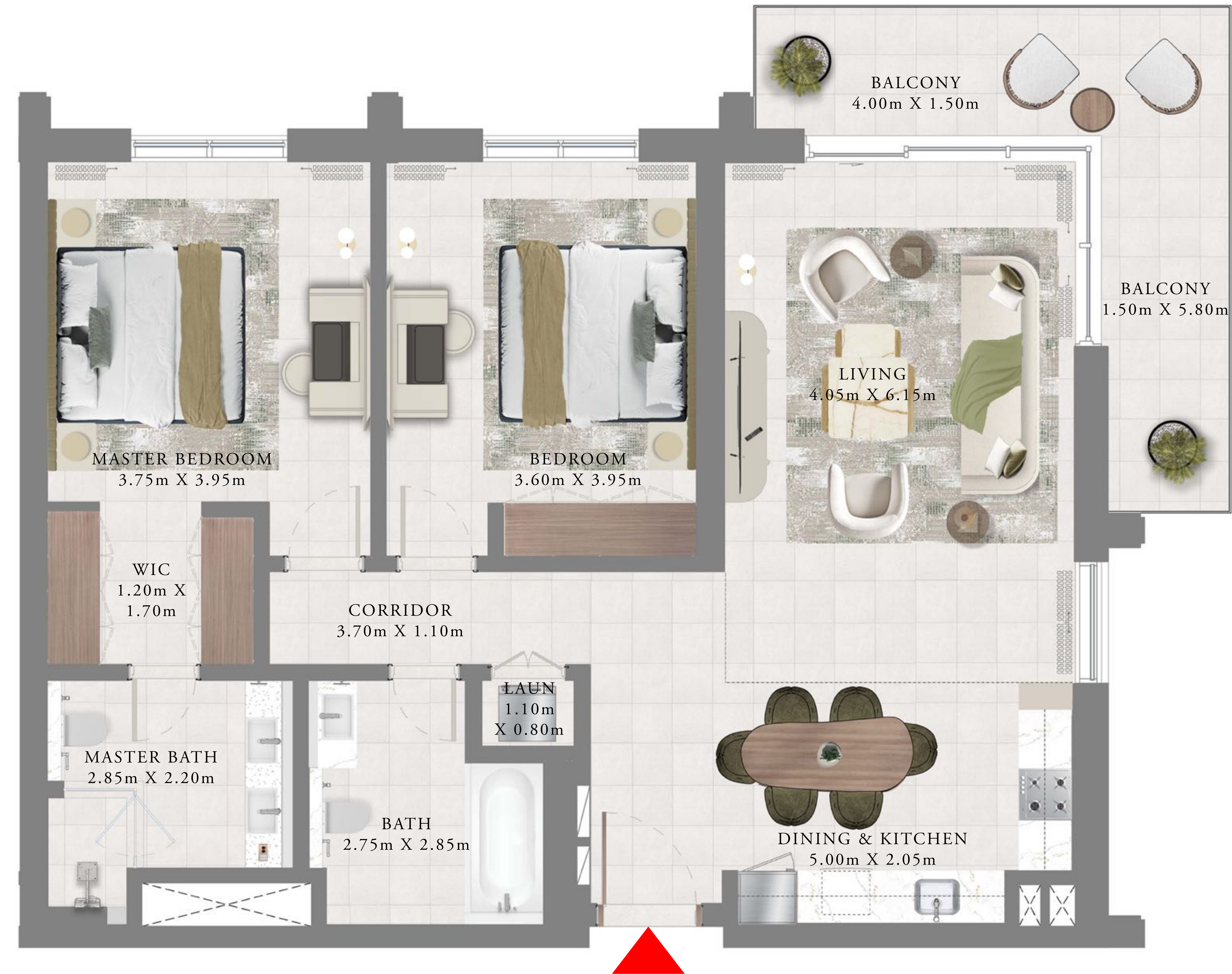
TOWER 2

## 2 BEDROOMS

LEVEL 1

UNIT 03

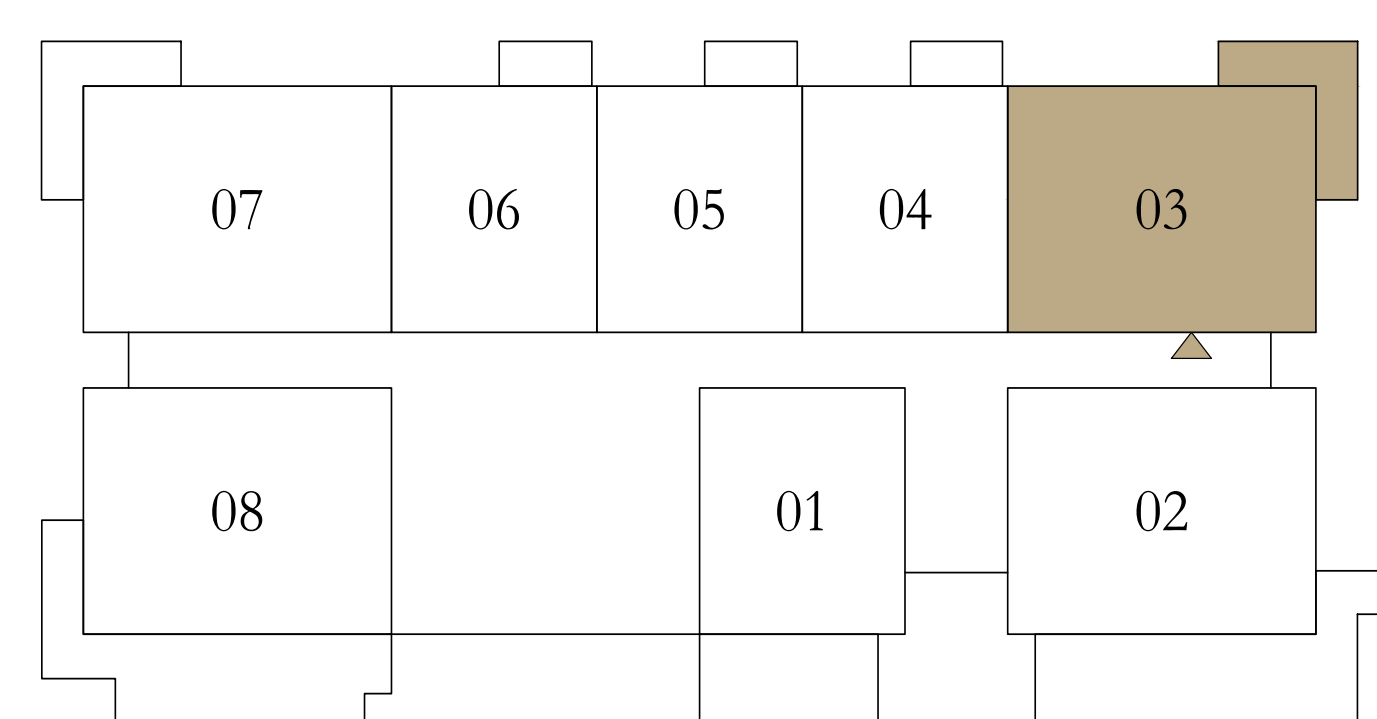
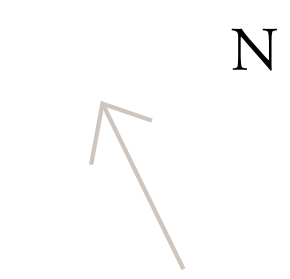
SUITE AREA	1161.53 SQ.FT.	107.91 SQ.M.
BALCONY AREA	171.04 SQ.FT.	15.89 SQ.M.
TOTAL AREA	1332.57 SQ.FT.	123.80 SQ.M.



KEY PLAN LEVEL

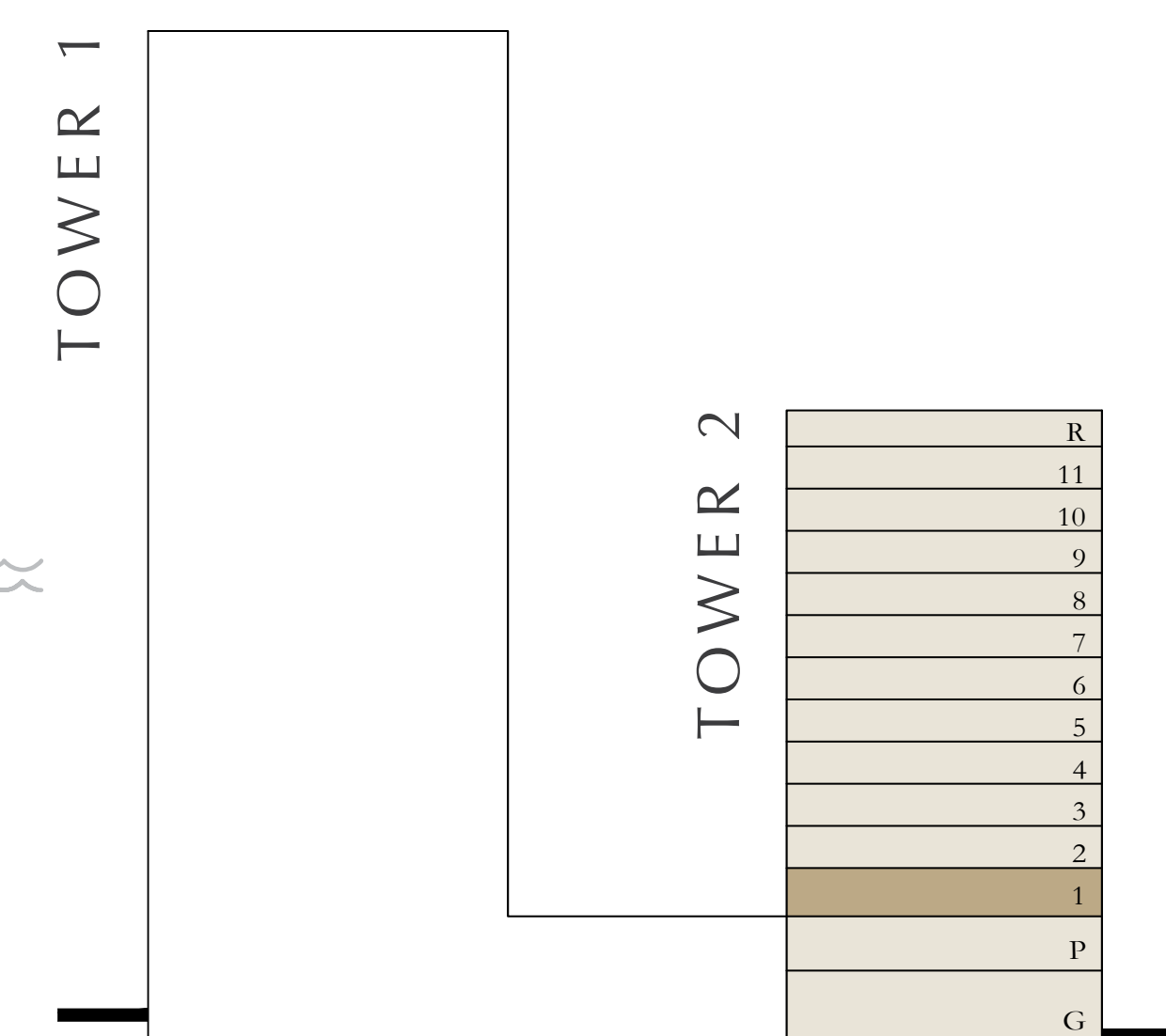
1

KEY SECTION



TOWER 1

TOWER 2



Disclaimer : All dimensions are in imperial and metric, and measured from finish to finish excluding construction tolerances. 2. All materials, dimensions, and drawings are approximate only. 3. Information is subject to change without notice, at developer's absolute discretion. 4. Actual area may vary from the stated area. 5. Drawings not to scale. 6. All images used are for illustrative purposes only and do not represent the actual size, features, specifications, fittings, and furnishings. 7. The developer reserves the right to make revisions / alterations, at it's absolute discretion, without any liability whatsoever.



# aeon

DUBAI CREEK HARBOUR

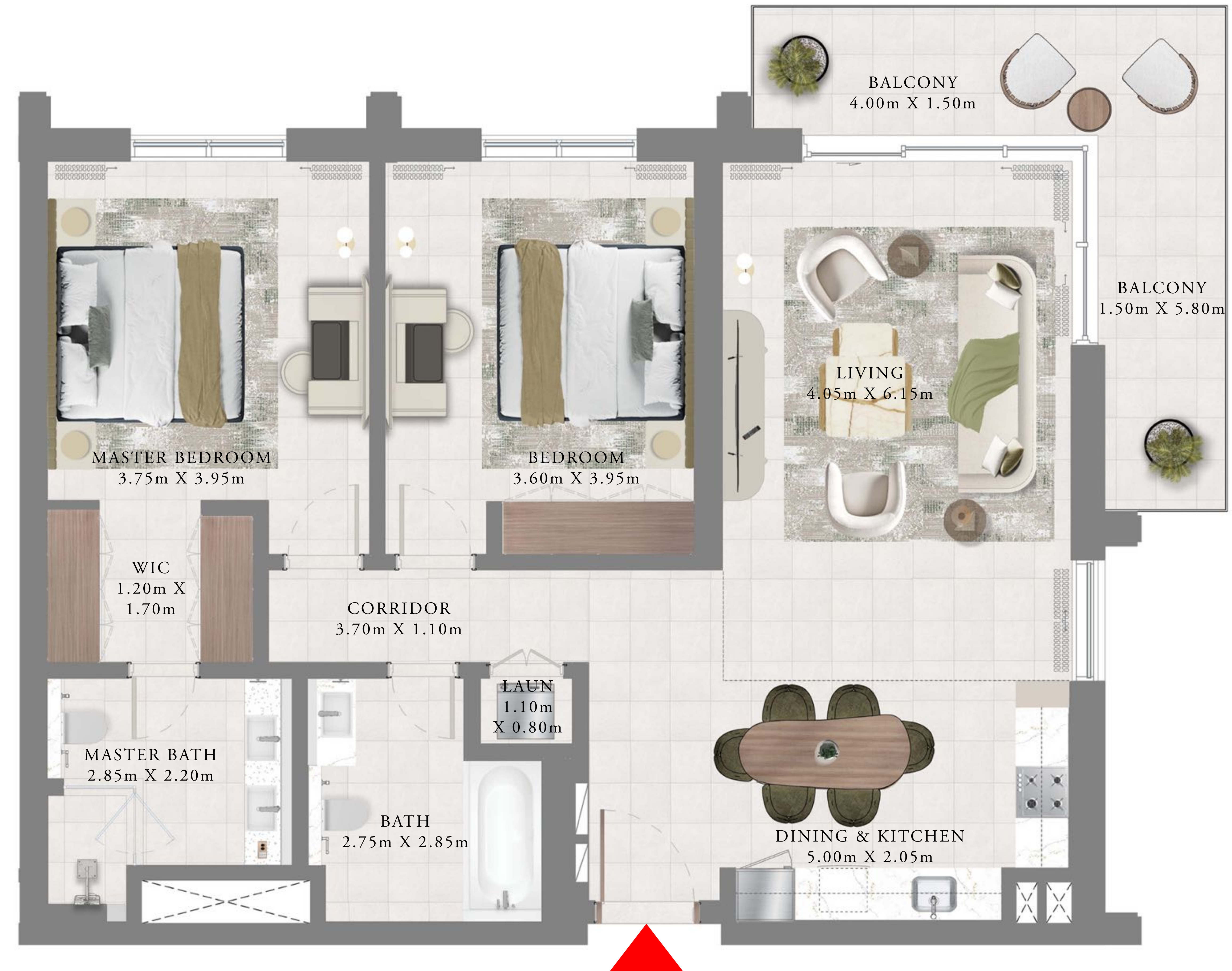
TOWER 2

## 2 BEDROOMS

LEVELS 2-11

UNIT 03 & 08

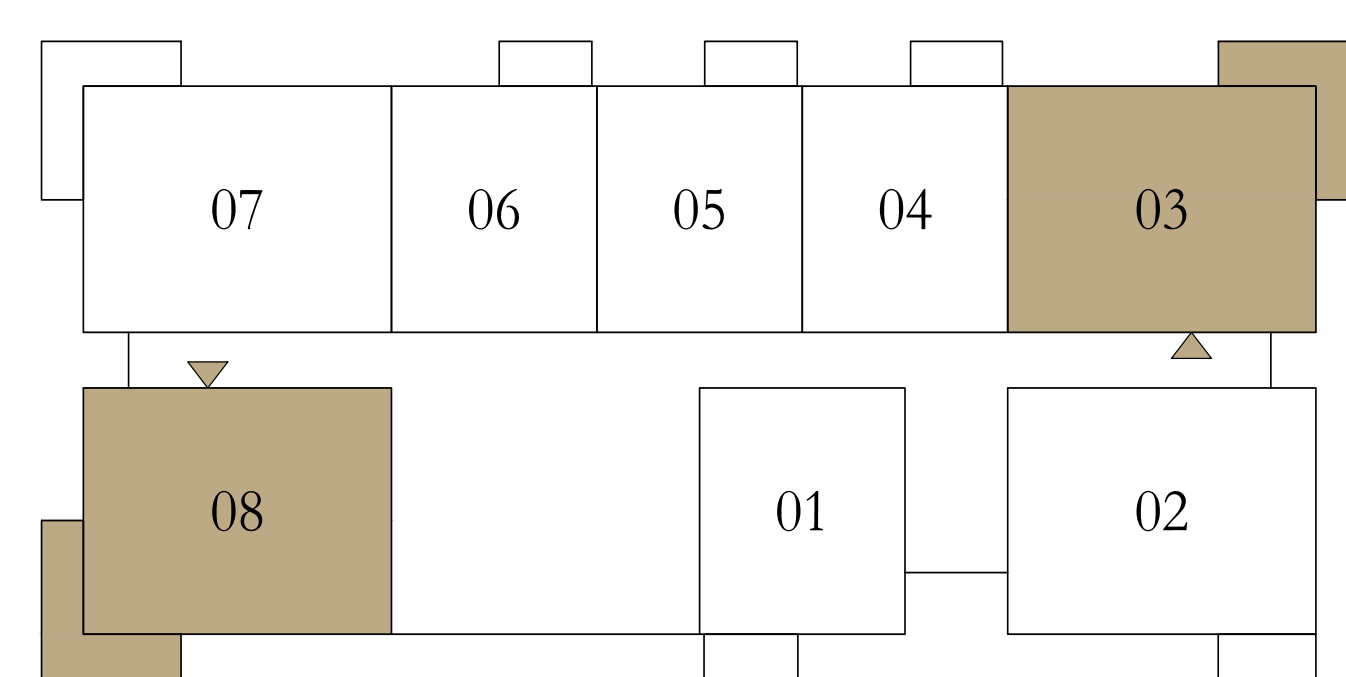
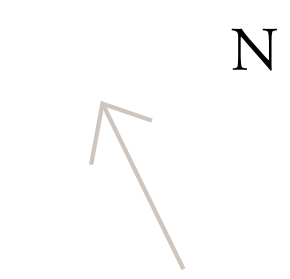
SUITE AREA	1161.53 SQ.FT.	107.91 SQ.M.
BALCONY AREA	171.04 SQ.FT.	15.89 SQ.M.
TOTAL AREA	1332.57 SQ.FT.	123.80 SQ.M.



KEY PLAN LEVEL

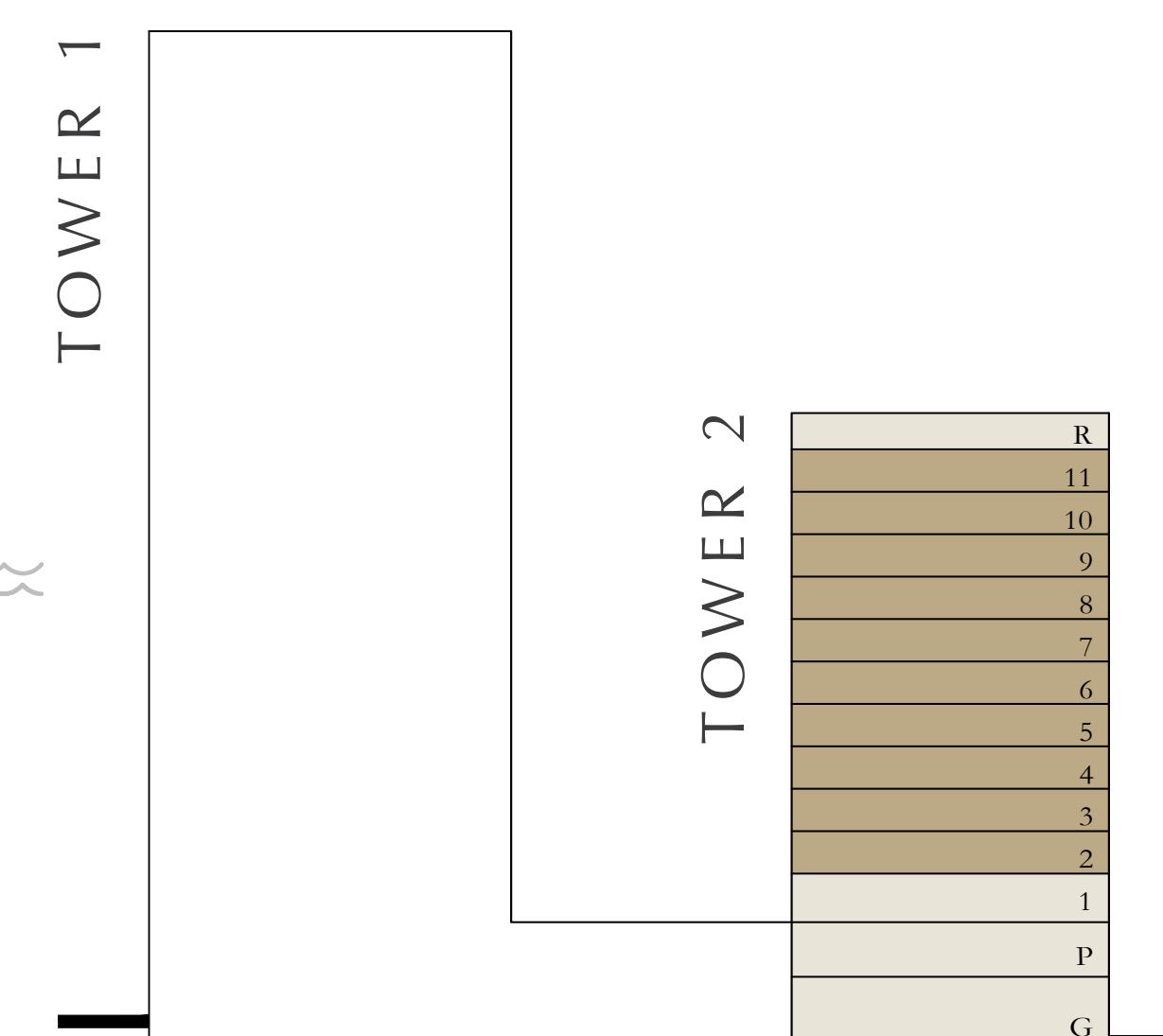
2-11

KEY SECTION



TOWER 1

TOWER 2



Disclaimer : All dimensions are in imperial and metric, and measured from finish to finish excluding construction tolerances. 2. All materials, dimensions, and drawings are approximate only. 3. Information is subject to change without notice, at developer's absolute discretion. 4. Actual area may vary from the stated area. 5. Drawings not to scale. 6. All images used are for illustrative purposes only and do not represent the actual size, features, specifications, fittings, and furnishings. 7. The developer reserves the right to make revisions / alterations, at it's absolute discretion, without any liability whatsoever.



# aeon

DUBAI CREEK HARBOUR

TOWER 2

## 2 BEDROOMS

LEVEL 1

UNIT 07

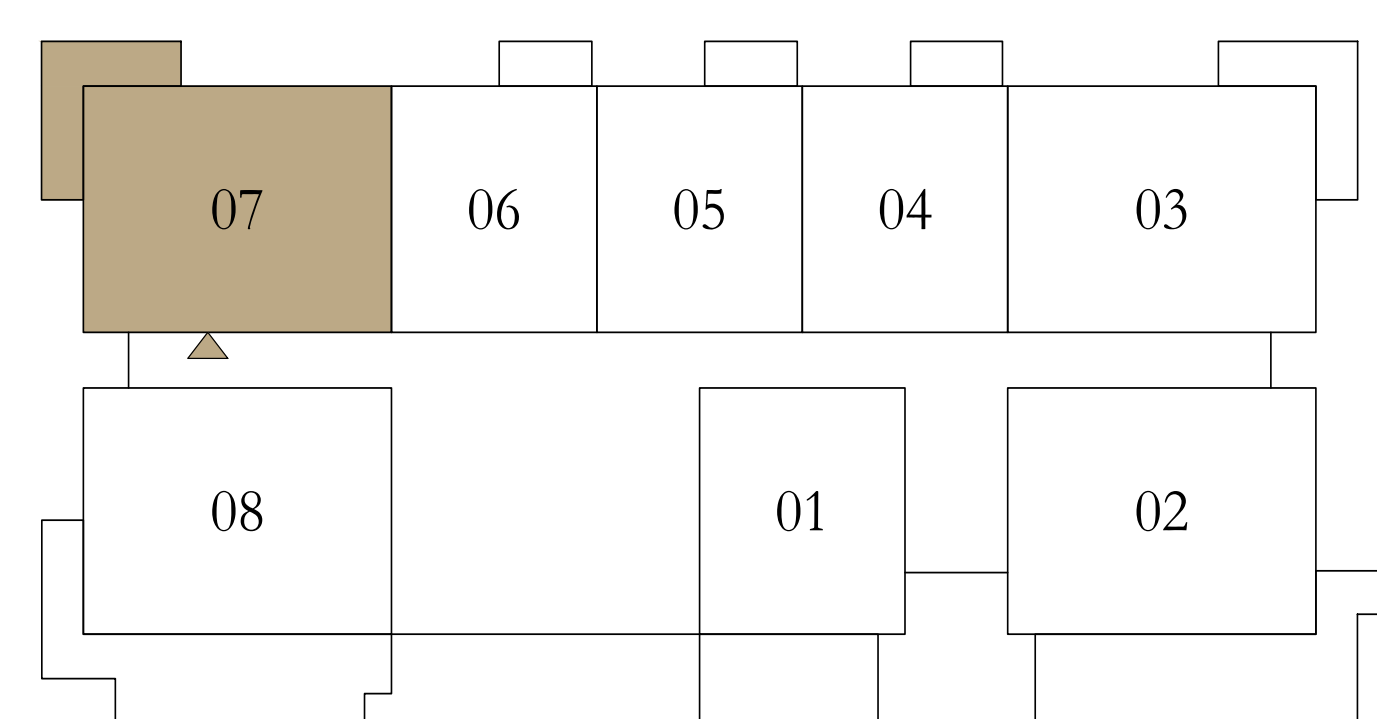
SUITE AREA	1161.53 SQ.FT.	107.91 SQ.M.
BALCONY AREA	171.04 SQ.FT.	15.89 SQ.M.
TOTAL AREA	1332.57 SQ.FT.	123.80 SQ.M.



KEY PLAN LEVEL

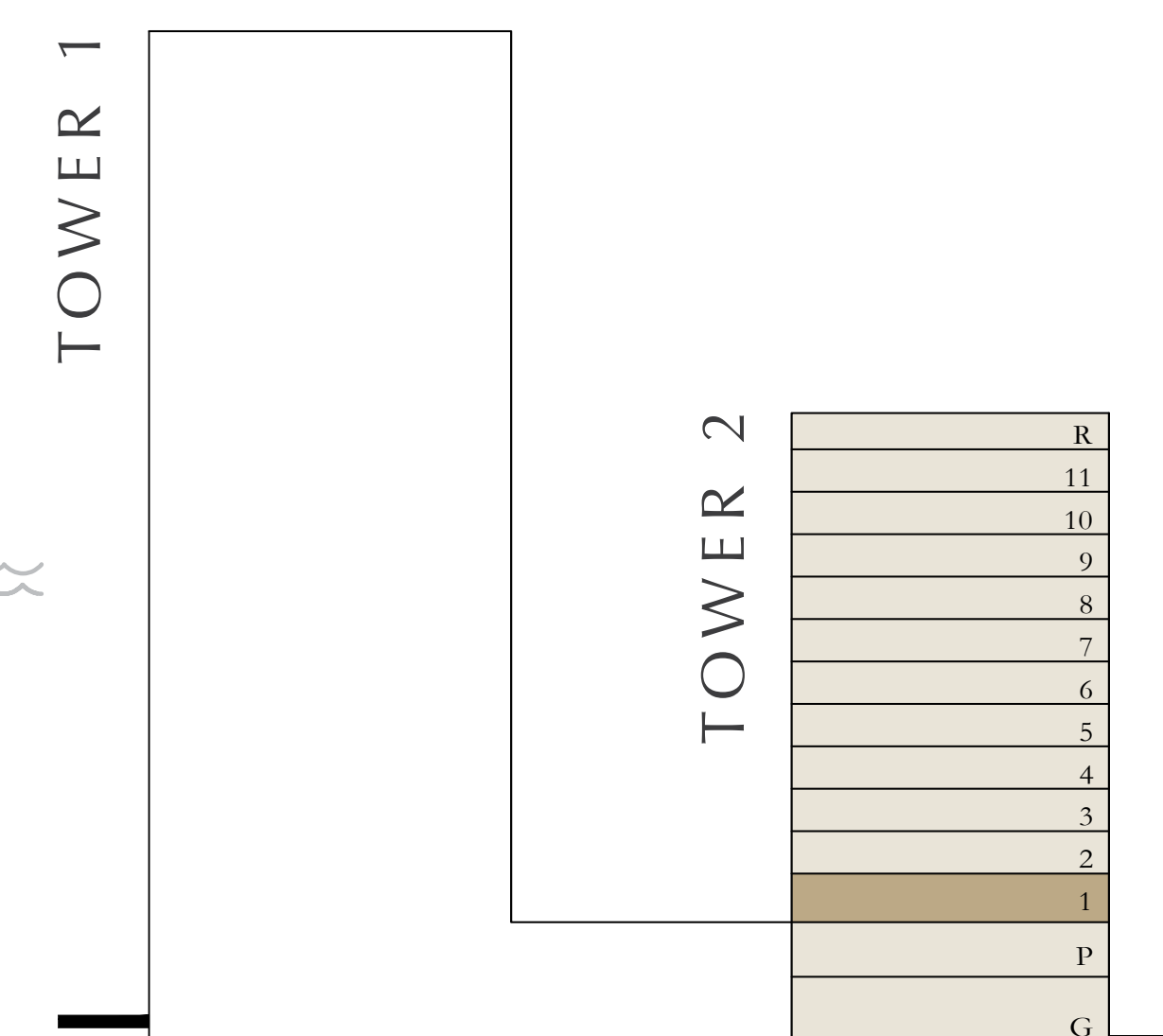
1

KEY SECTION



TOWER 1

TOWER 2



Disclaimer : All dimensions are in imperial and metric, and measured from finish to finish excluding construction tolerances. 2. All materials, dimensions, and drawings are approximate only. 3. Information is subject to change without notice, at developer's absolute discretion. 4. Actual area may vary from the stated area. 5. Drawings not to scale. 6. All images used are for illustrative purposes only and do not represent the actual size, features, specifications, fittings, and furnishings. 7. The developer reserves the right to make revisions / alterations, at it's absolute discretion, without any liability whatsoever.



# aeon

DUBAI CREEK HARBOUR

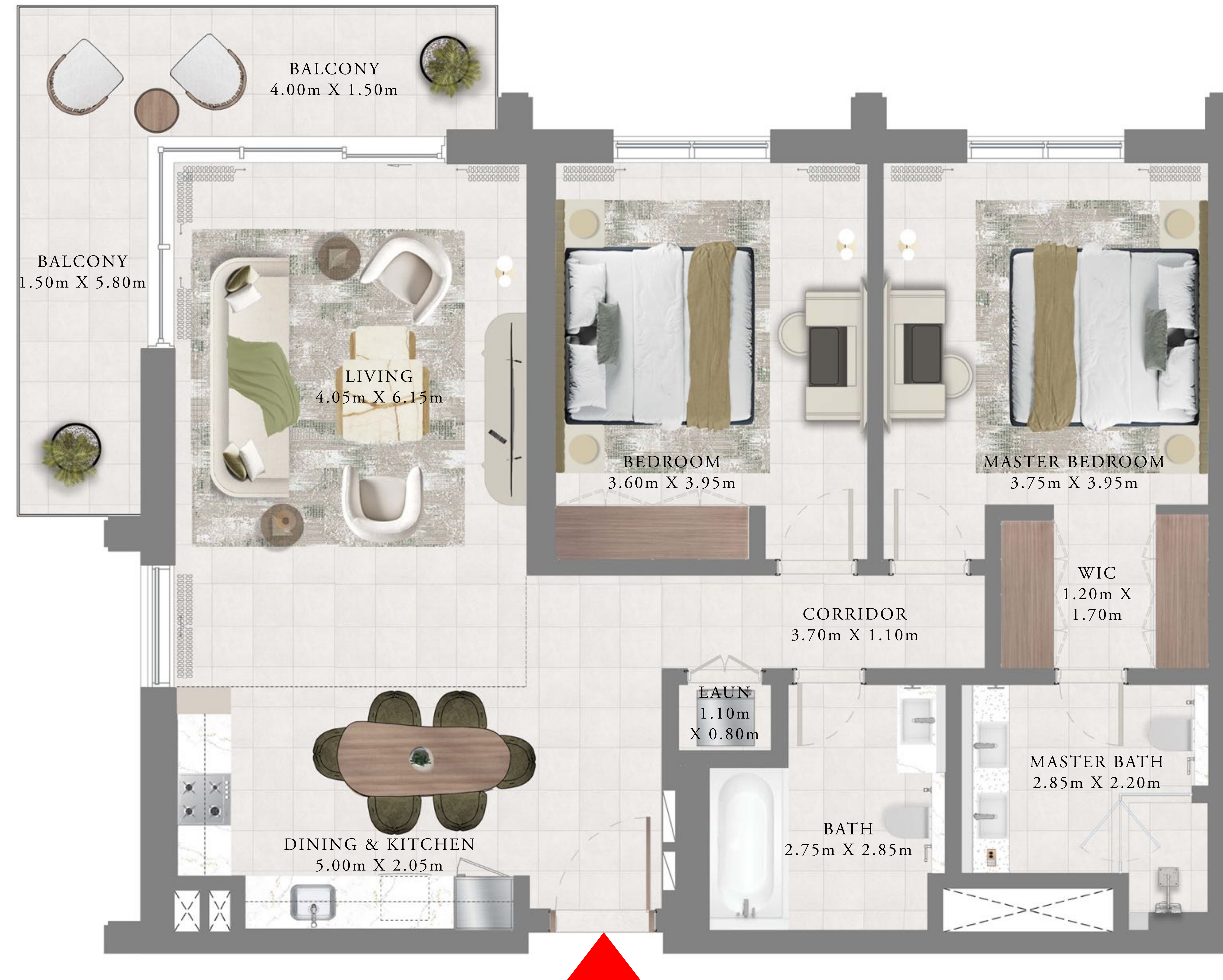
TOWER 2

## 2 BEDROOMS

LEVELS 2-11

UNIT 07

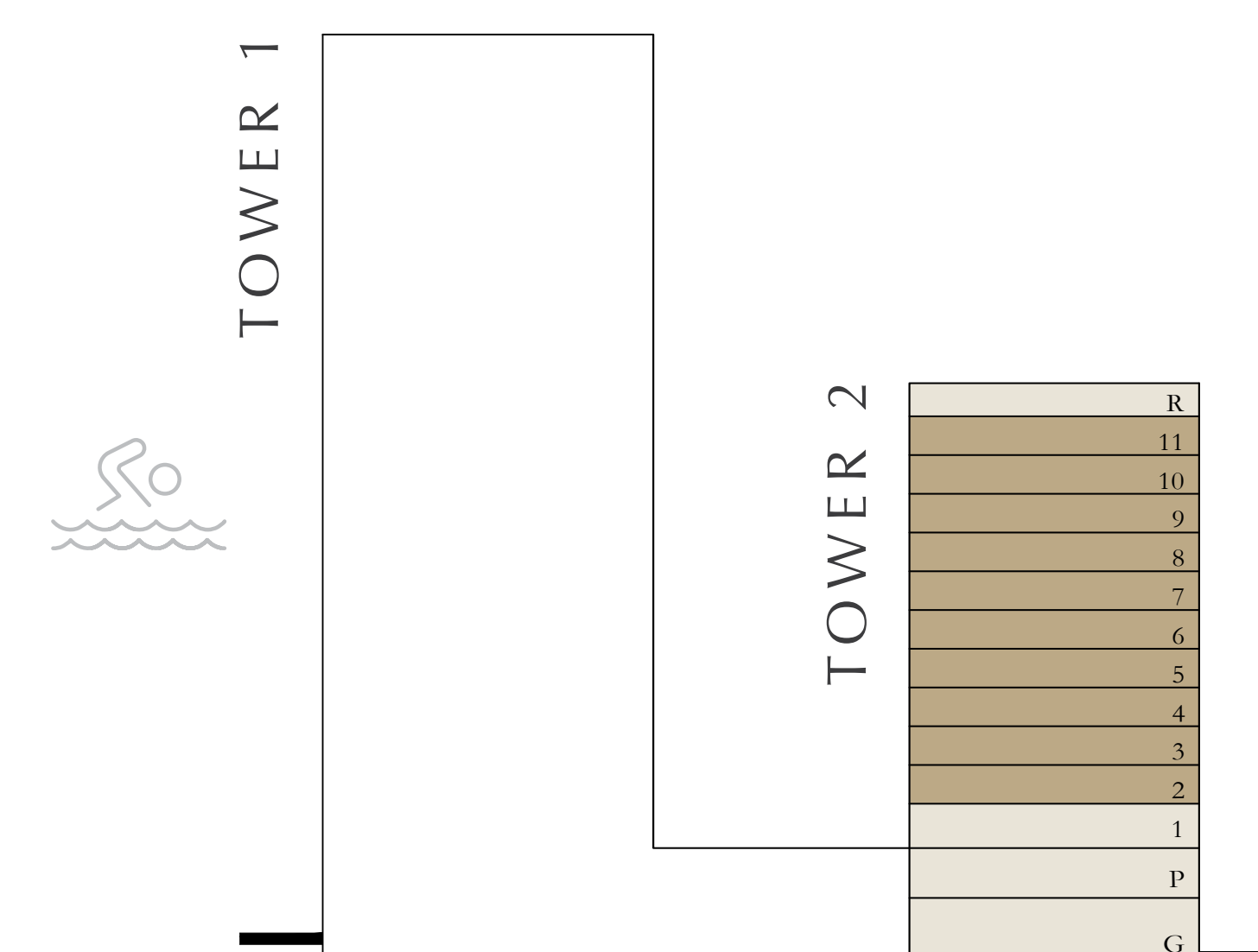
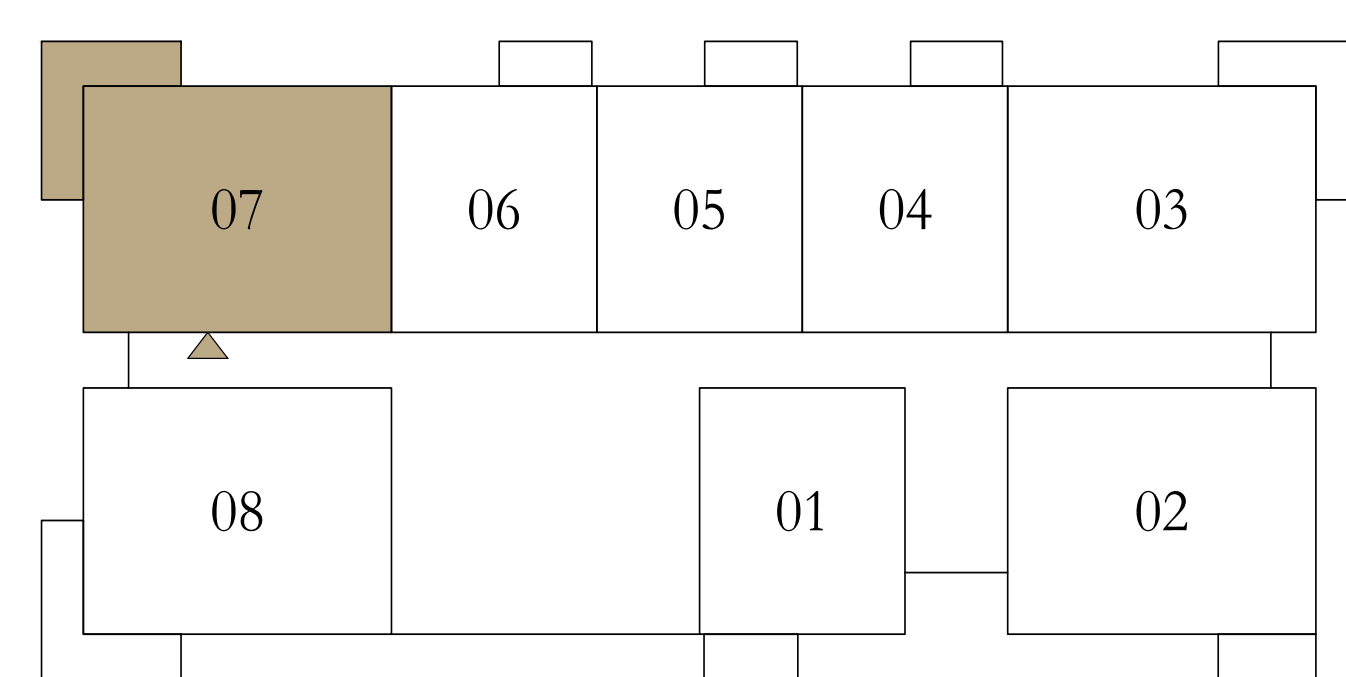
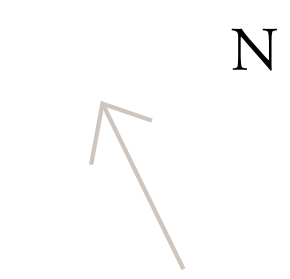
SUITE AREA	1161.53 SQ.FT.	107.91 SQ.M.
BALCONY AREA	171.04 SQ.FT.	15.89 SQ.M.
TOTAL AREA	1332.57 SQ.FT.	123.80 SQ.M.



KEY PLAN LEVEL

2-11

KEY SECTION



Disclaimer : All dimensions are in imperial and metric, and measured from finish to finish excluding construction tolerances. 2. All materials, dimensions, and drawings are approximate only. 3. Information is subject to change without notice, at developer's absolute discretion. 4. Actual area may vary from the stated area. 5. Drawings not to scale. 6. All images used are for illustrative purposes only and do not represent the actual size, features, specifications, fittings, and furnishings. 7. The developer reserves the right to make revisions / alterations, at it's absolute discretion, without any liability whatsoever.