



CONSTRUCTION COMPANY
строительная компания
ABDULKADİR TUNÇ INVESTMENT LTD.

LOS ANGELES

Starts from Feb 2024

MMT TUNÇ GROUP



MMT TUNÇ GROUP CONSTRUCTION COMPANY IS A RELIABLE DEVELOPER WITH 25 YEARS OF EXPERIENCE IN THE REAL ESTATE MARKET. MMT TUNÇ GROUP IS ONE OF THE FEW CONSTRUCTION COMPANIES IN ALANYA THAT WORKS CLOSELY WITH THE CITY AUTHORITIES ON THE HOUSING RENOVATION PROGRAM AND WE ARE BUILDING MORE THAN 25 PROJECTS IN 10 DISTRICTS OF ALANYA AND NORTHERN CYPRUS WITH APARTMENTS IN VARIOUS PRICE CATEGORIES. THANKS TO THIS COOPERATION, OUR PROJECTS HAVE PROFESSIONALLY PREPARED AND APPROVED CONSTRUCTION DOCUMENTS AND ARE GUARANTEED TO BE COMPLETED IN THE REQUIRED QUALITY AND ON TIME.

- Total building area: 6895 m²
- Number of blocks: 1
- Number of apartments: 268



LOS ANGELES IS A NEW LARGE-SCALE RESORT COMPLEX LOCATED ON THE SEASHORE IN THE GULF OF MORPHOU IN THE GAZIVEREN AREA OF NORTHERN CYPRUS. IT HAS AN IDEAL LOCATION, IN A SPARSELY POPULATED, ECOLOGICALLY CLEAN PLACE, WHICH IS ONE OF THE REASONS WHY MANY PEOPLE WHO WANT TO BUY PROPERTY IN CYPRUS PREFER TO LIVE HERE. THE COMPLEX IS LOCATED RIGHT BY THE BEAUTIFUL SANDY BEACH, A SHORT WALK FROM THE CENTER OF GAZIVEREN

Gaziveren district

Distance to:
Girne - 47km
Lefkosa - 53 km
Iskele - 117 km



The city has the fame of the "Citrus Capital" and is known for its orange festivals. A promising area that is just building up its infrastructure and has low prices due to the availability of educational institutions.

External infrastructure



- Outdoor pools
- Indoor heated swimming pool
- Water park
- Fitness Center
- Sauna/Hammam
- Children's playground
- Multicard
- Closed parking
- Taxi
- Transfer services
- Equipped beach strip

Unique solutions



- Rooftop pool with panoramic views of the Mediterranean Sea.
- The restaurant is on the 11th floor level.
- Cascading terraces from the 5th floor.
- Apartment with a garden of 10 m² with terraces on the ground floors.
- Jacuzzi on the terraces.



View from the front



The main entrance

Terraces from the 5th floor



View of the terraces



Roof view



Roof



Top view, backyard

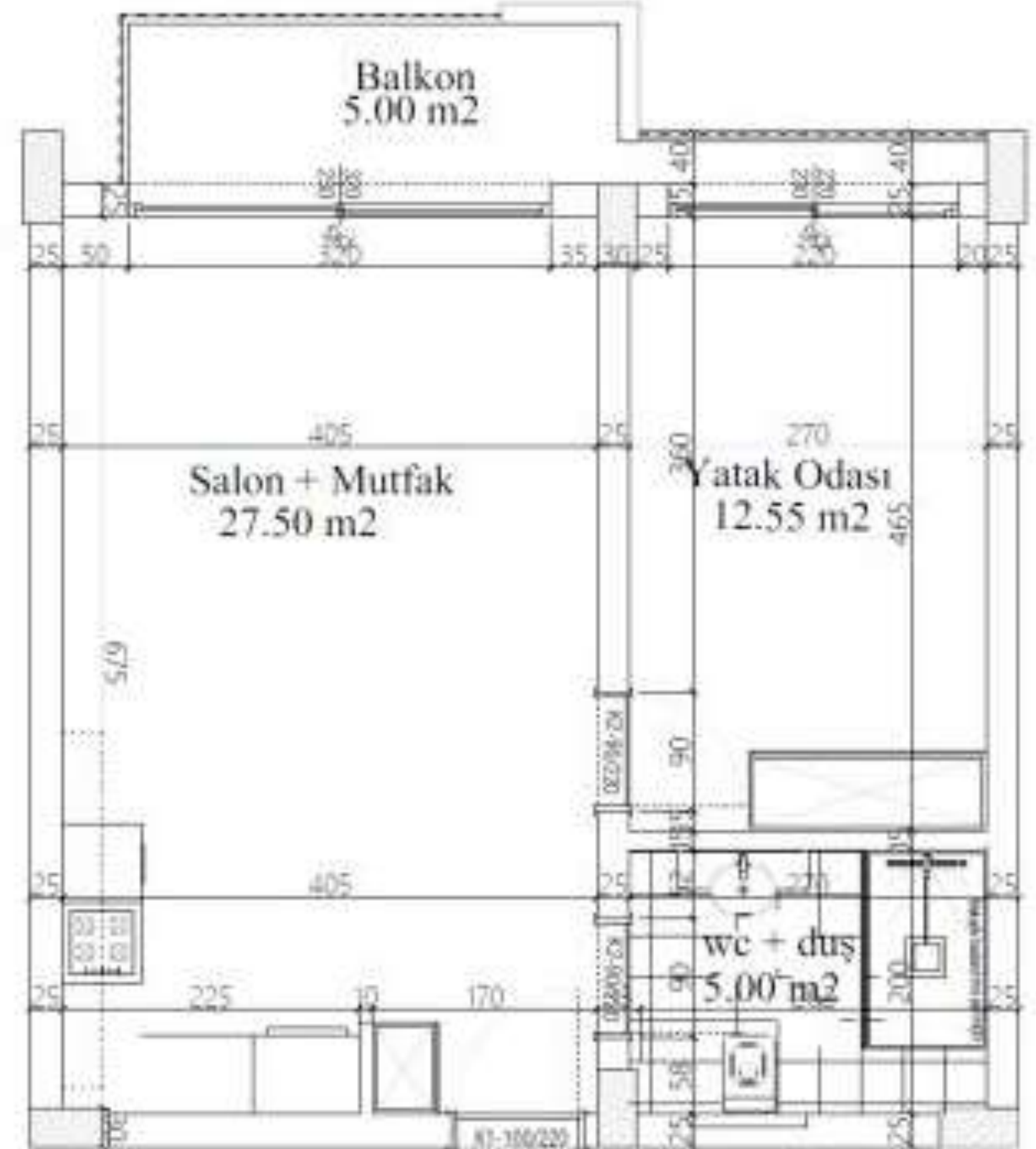
Types and quadrature of apartments

1+1

The total area is 50 m²

Balcony – 5 m²

Living area – 45 m²



Types and quadrature of apartments

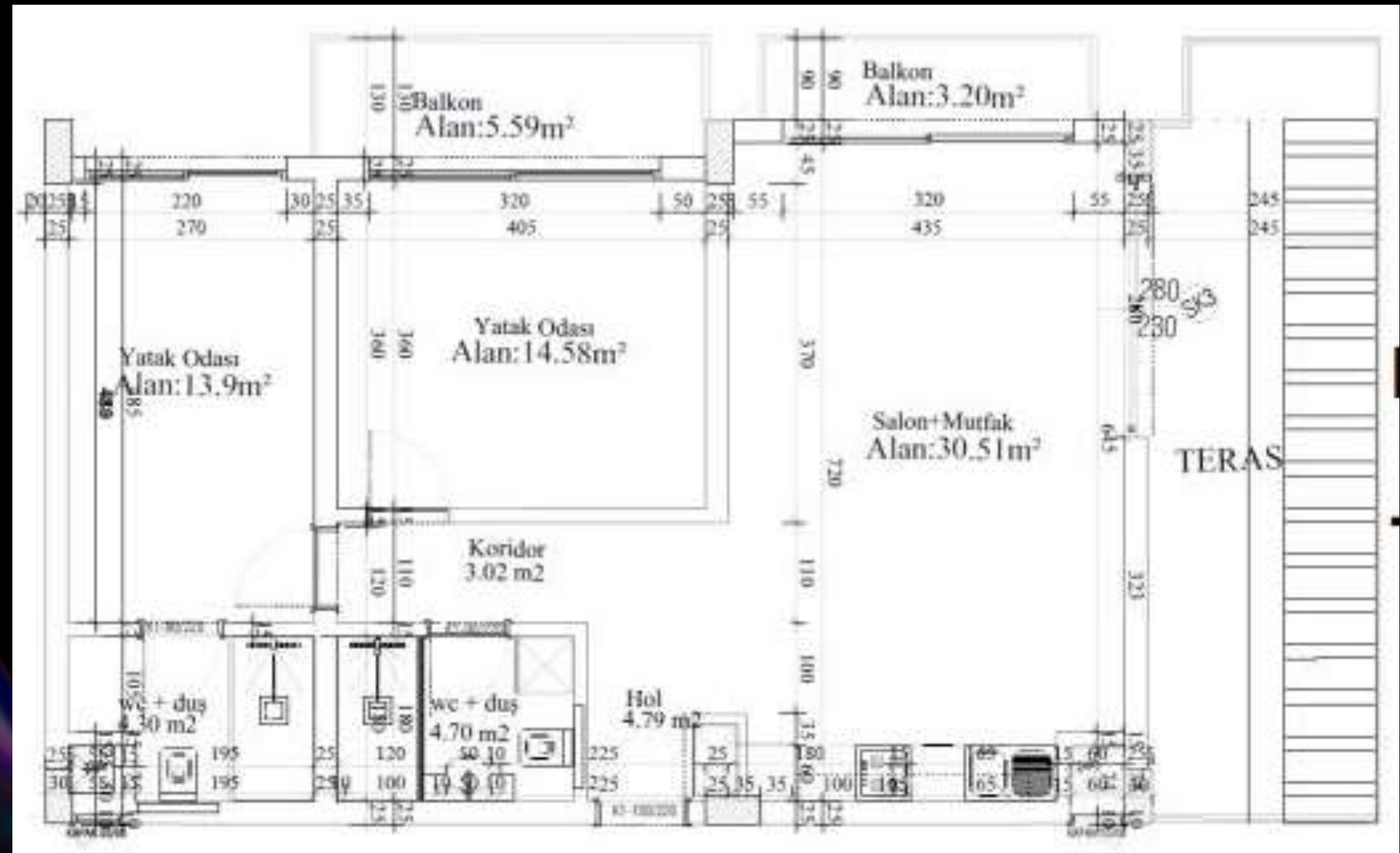
2+1

The total area is 87 m²

Balcony - 5.59 m²

Balcony - 3.20 m²

Living area - 78 m²



Payment plan

- Reservation 2000 GBP
- Initial payment 35%
- Payment by interest-free installments until the end of construction



Thank you!