

# KNIGHTSBRIDGE COLLAGE SUKHUMVIT 107



“PURITY OF LIFE”

KNIGHTSBRIDGE  
COLLAGE  
SUKHUMVIT 107

“ P U R I T Y O F L I F E ”

*Pure simple element, clear line and clean shape to create  
different rhythm volume of design.*



# Why Bearing?

- Prime location in Bangna with more than 70% of demand growth for over 5 years
- Highly growth for capital gain which gaining around 5-6 % / year
- Gaining up to 7 % Rental guarantee yield
- Center of education and entertainment; Bangkok Mall, International School etc.
- Future transit line ;
  - (i) Light Rail Transit Project Bangna – Suwannabhumi
  - (ii) MRT Yellow line Project
- **BTS GREEN LINE Bearing Station & Udomsuk – Bangna Skywalk**
- Office Hub & Service Residence



# SPACE connect



## CONNECT "THE WORLD"

Suitable for every style of transportation with only 300 meters from BTS Bearing, 7 minutes to BTS Onnut, 15 minutes to Thonglor. Moreover, this project will benefit you with the shorter distance from our project to Sirat Expressway.

## CONNECT "Experience"

Connected you to Integrated Space to every dimension of functional with 4 storey linkage facilities, created the new ideas of living and fulfill your need.



## CONNECT "Intelligence"

With Smart Home Automation System, Which will be helping you to master the housing system much more easier than before..

## CONNECT "Mechanical"

The recent technology called "Auto Parking & Robot Parking" will developed the goodness of living and also provide higher standard of living. With the highest safety provided from our professional mechanic worker to ensure that our machine will be working properly at all time.

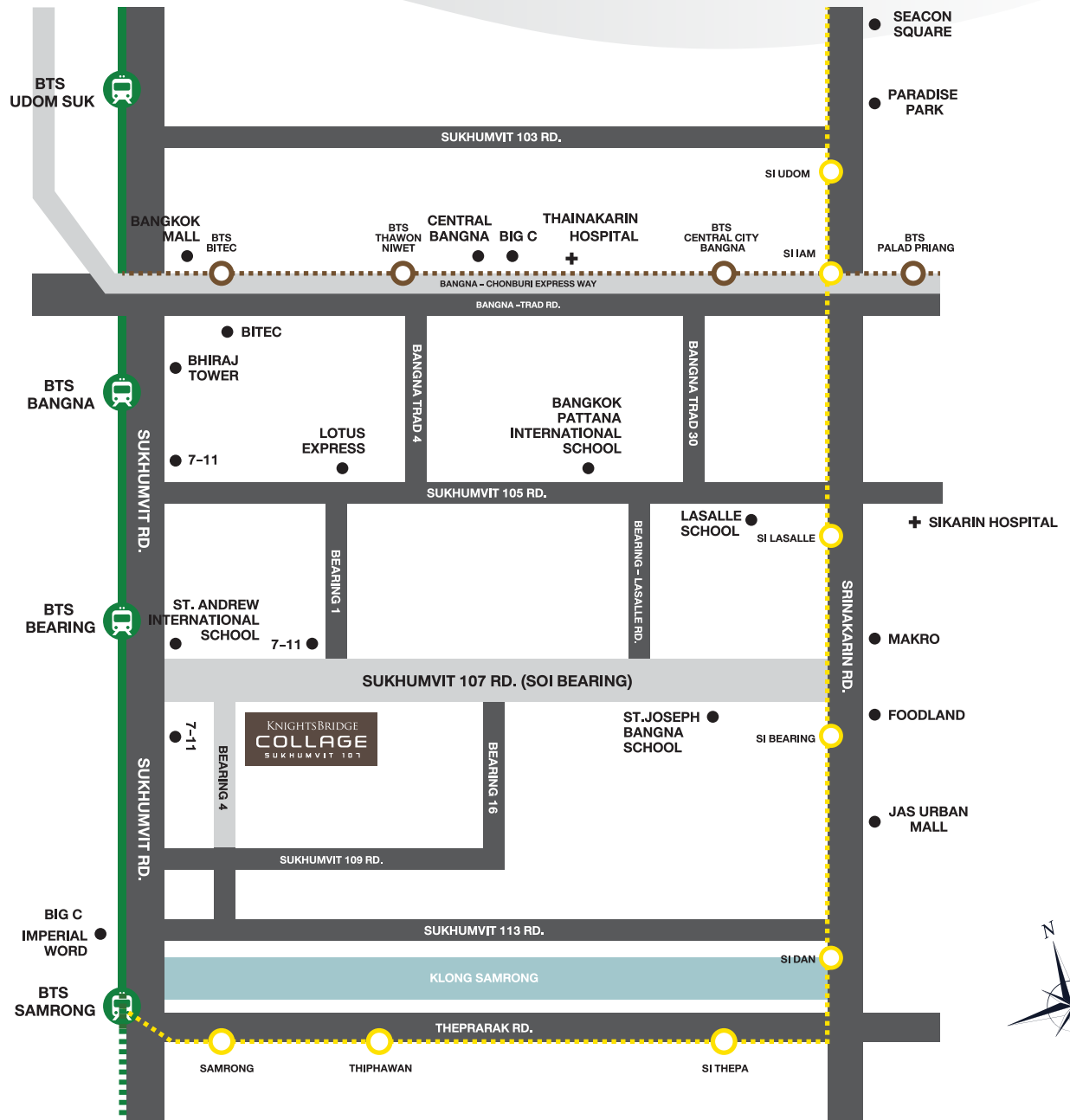


# KNIGHTSBRIDGE COLLAGE SUKHUMVIT 107

# Project Location

## LOCATION

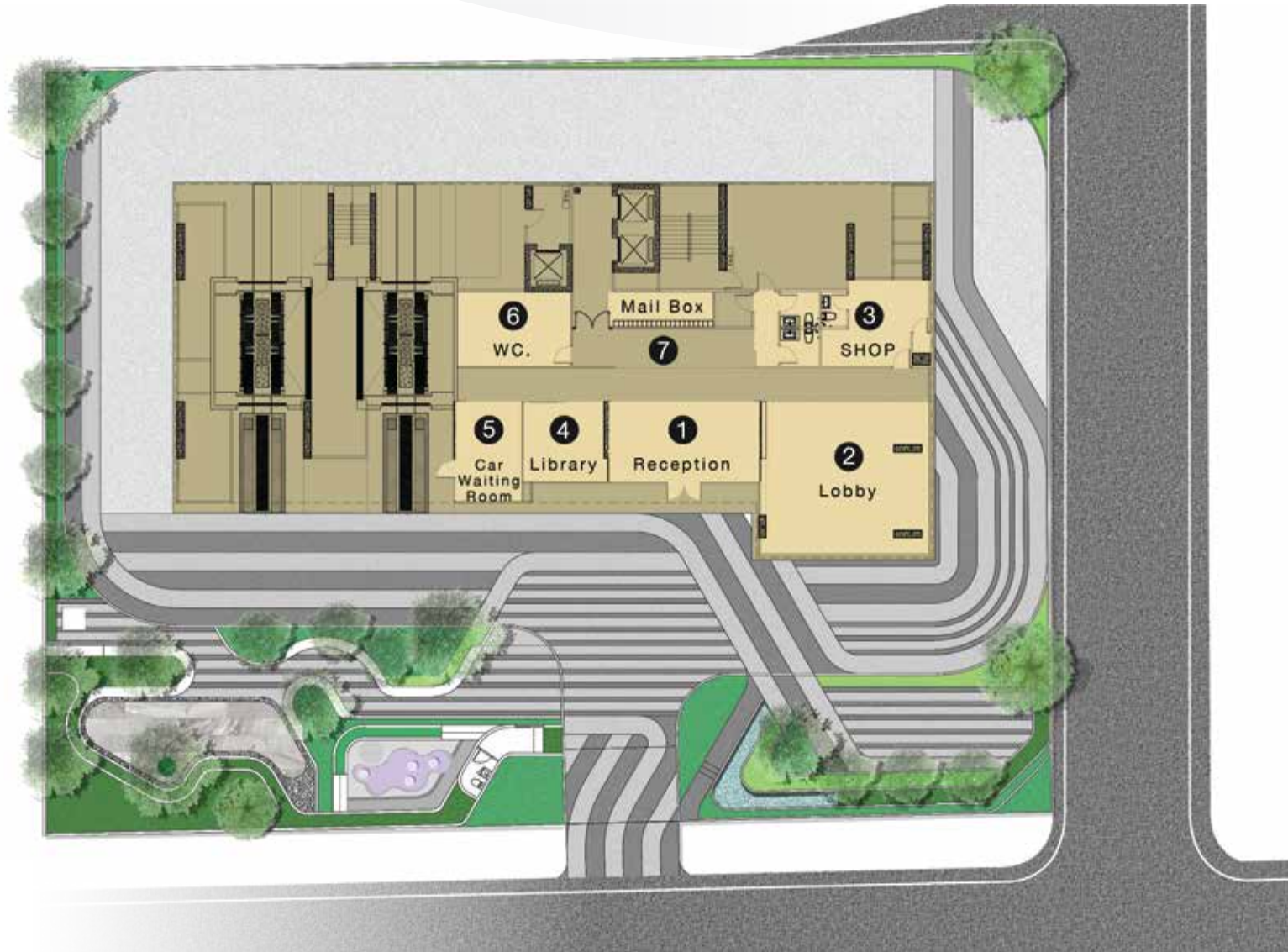
- **Sukhumvit107**  
(BTS Bearing E14)
- **300 M.**  
From BTS Bearing
- **Supreme Access**  
(Express Way)  
Sirat Expressway  
Bangna Expressway
- **Close to CBD**
- **7 mins** to On-nut
- **15 mins** to Thonglo







# Ground Floor Plan





# Master Plan



## 8<sup>th</sup> Floor Plan



# Master Plan

2314  
BP1-04

2315  
B1-04

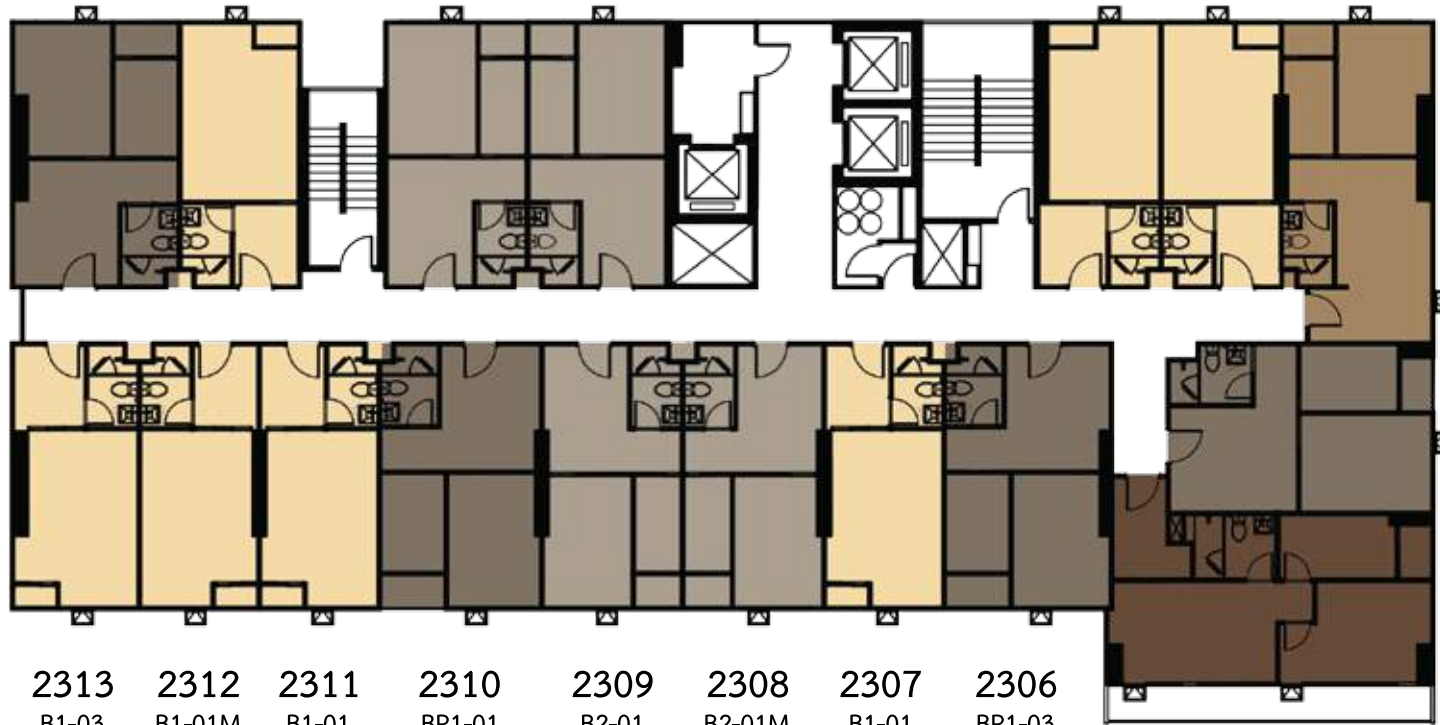
2316  
B2-02

2317  
B2-03

2301  
B1-02

2302  
B1-01

2303  
B3-01



2305  
C3-01



th  
**23** Floor Plan





# Master Plan

2414    2415    2416    2417    2401    2402    2403  
BP1-04    B1-04    B2-02    B2-03    B1-02    B1-01    B3-01



2413    2412    2411    2410    2409    2408    2407    2406    2405    2404  
B1-03    B1-01M    B1-01    BP1-01    B2-01    B2-01M    B1-01    BP1-03    D1-01    D2-01



th  
**24** Floor Plan



# Master Plan

2514  
BP1-04

2515  
B1-04

2516  
B2-02

2517  
B2-03

2501  
B1-02

2502  
B1-01

2503  
B3-01



2513  
B1-03

2512  
B1-01M

2511  
B1-01

2510  
BP1-01

2509  
B2-01

2508  
B2-01M

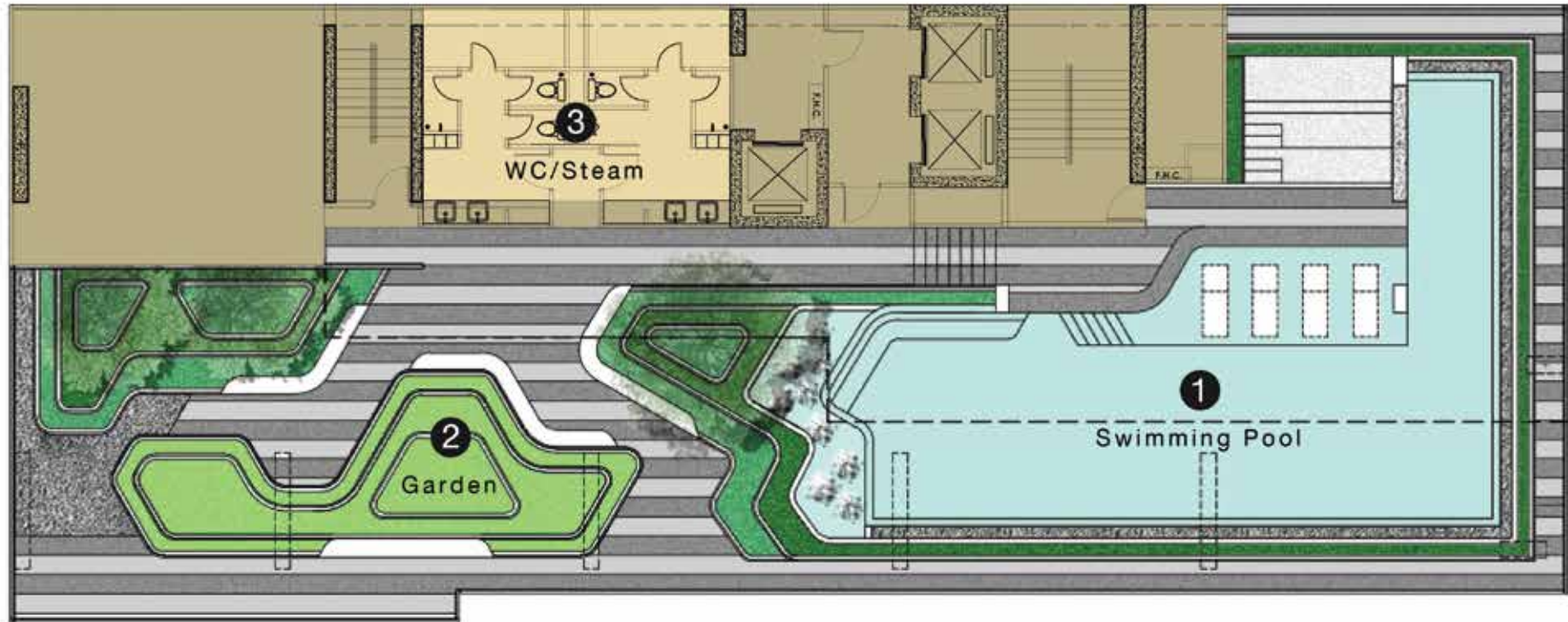
2507  
B1-01

2506  
BP1-03



th  
**25** Floor Plan

# Facilities Floor



<sup>th</sup>  
**26** Floor Plan





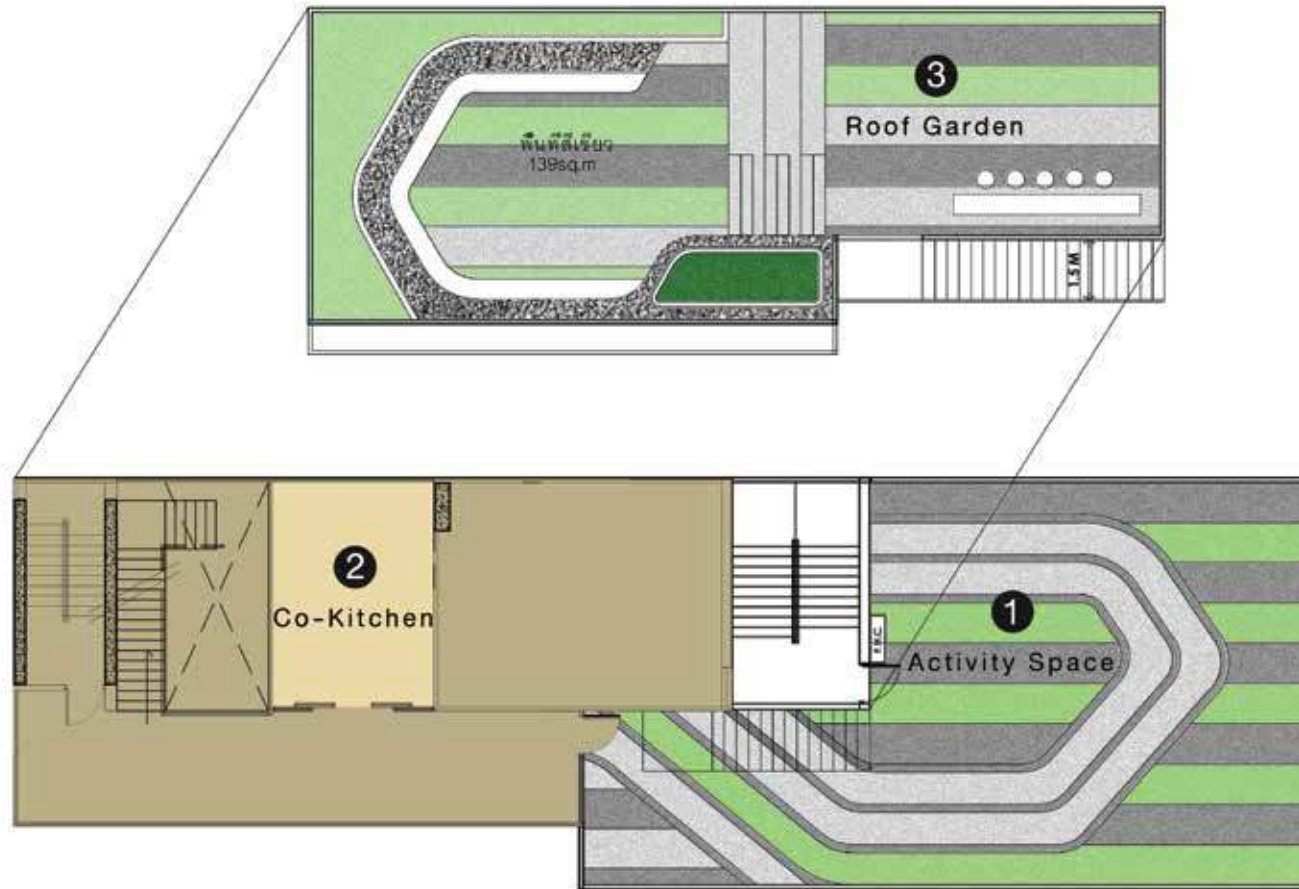
# Facilities Floor



<sup>th</sup>  
**27** Floor Plan



# Roof Floor Plan



<sup>th</sup>  
**28** Floor Plan

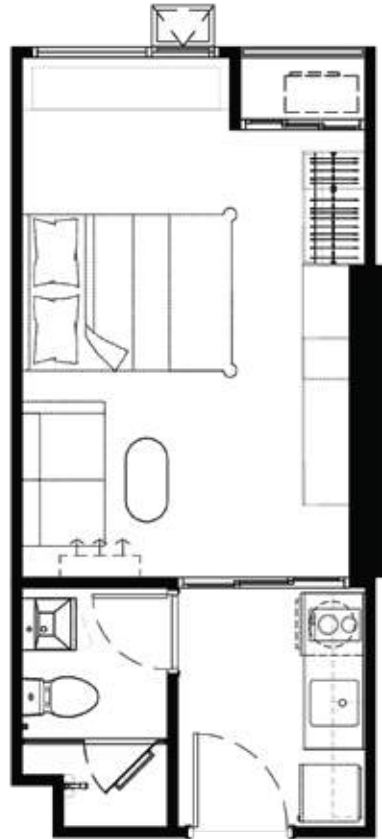


# Unit Plan

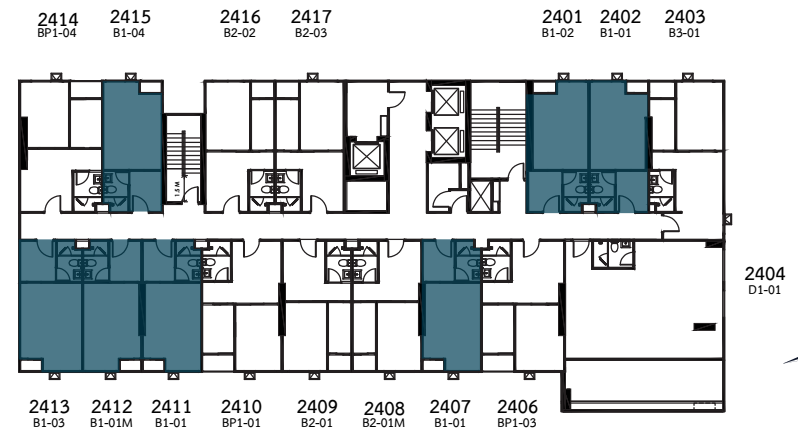
Type

**B1-01**

24.70 Sqm



8<sup>th</sup> Floor Plan



24<sup>th</sup> Floor Plan







Simulated images for commercial only.

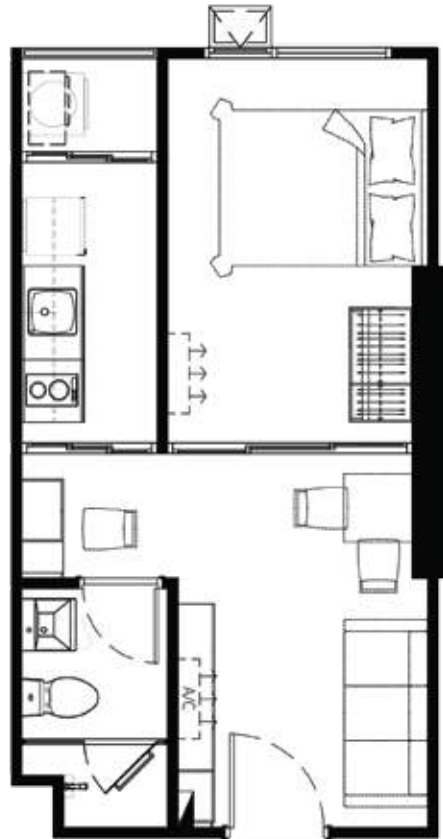


# Unit Plan

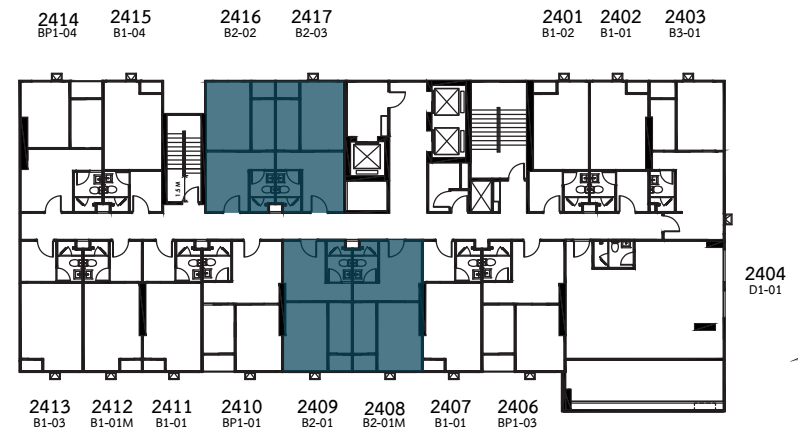
Type

**B2-01**

28.80 Sqm



th  
**8-22** Floor Plan



th  
**24** Floor Plan







Simulated images for commercial only.



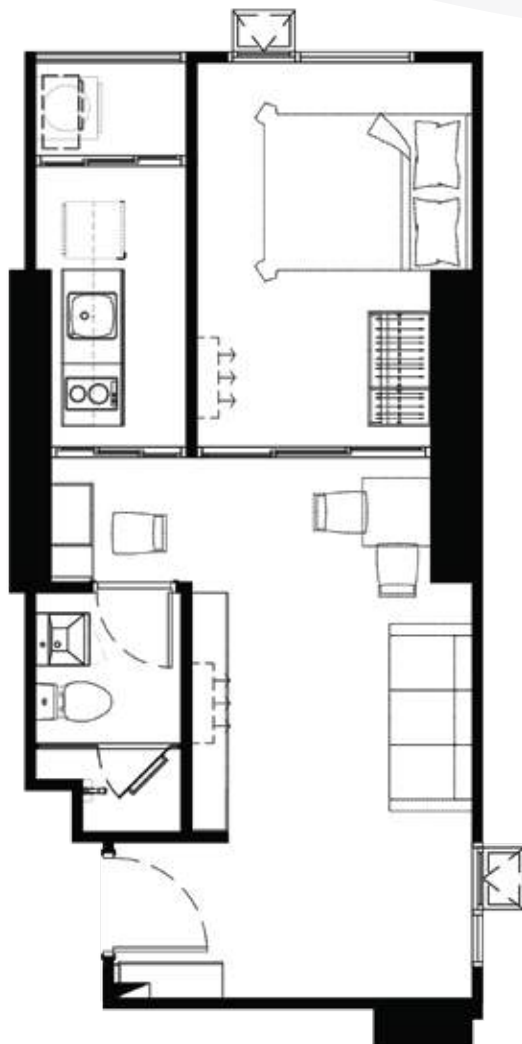


# Unit Plan

Type

**B3-01**

34.80 Sqm



8<sup>th</sup>  
**8-22** Floor Plan



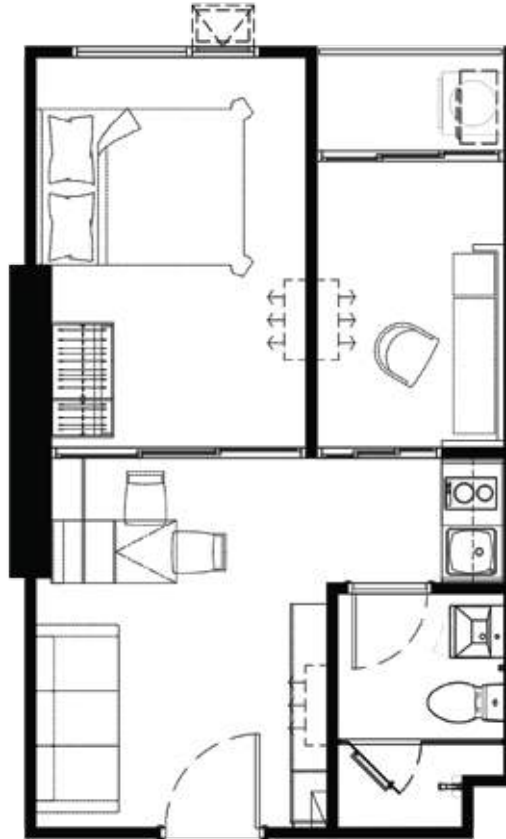


# Unit Plan

Type

**BP-01**

33.30 Sqm



th  
**8-22** Floor Plan



th  
**24** Floor Plan





Simulated images for commercial only.





# Unit Plan

Type

**C1-01**

53.60 Sqm



8<sup>th</sup>  
**8-22** Floor Plan

