

Bizim Evler 9

A NEW CLASSIC OF BİZİM EVLER

The story of Bizim Evler, which was started by İhlas in 2007 in Ispartakule, continues adding value to the region with Bizim Evler 9 Project.

- Attentively designed residence options suitable for your family
 - Unique lake view
 - Wide and spacious landscape areas
- High quality materials, advanced construction techniques
 - Day by day increasing investment value



WITH THE EXCITEMENT OF THE FIRST DAY



The images and information in this brochure are for informational purposes. The application project is valid for the project's flats' sizes and site lists. The company has the right to make any changes it deems necessary during the implementation phase.

With the excitement of the first day Bizim Evler continues to make you earn more. It has always been beneficial over the years with its investment value and the quality of life brought by the privileges it offers.

We present Bizim Evler 9 for you to earn again. Your special site consisting of 145 residences offers you a good option.



QUALITY
THAT IS ALIVE
FROM THE
FIRST DAY TO
THE PRESENT



The images and information in this brochure are for informational purposes. The application project is valid for the project's flats' sizes and site lists. The company has the right to make any changes it deems necessary during the implementation phase.

TO LIVE IN THE BLUE AND THE GREEN THOROUGHLY

A life which turns into deep blue dreams with
a wonderful lake view is awaiting you.

The beauties that start with this impressive view are crowned with the
unique time you will spend with your family in the spacious green areas.
You will experience the landscape to the fullest whether on your large
balcony or in the green area of the site.



The images and information in this brochure are for informational purposes. The application project is valid for the project's flats' sizes and site lists.
The company has the right to make any changes it deems necessary during the implementation phase.

THE QUALITY IS IN THE FOUNDATION

Bizim Evler brand, which aims to set the level of quality higher with every project; is proud to offer you a quality worthy of its name with its modern and meticulous design, high quality materials used, built-in fixtures preferences in kitchens and many other innovations.

HAPPINESS' CURTAIN IS RISING AGAIN

Your special site, which is designed for family life and consists of 3+1 and 4+1 flats with large size; offers you a calm and peaceful environment.







HAPPY AND PEACEFUL
FUTURE OF YOUR FAMILY...



The images and information in this brochure are for informational purposes. The application project is valid for the project's flats' sizes and site lists. The company has the right to make any changes it deems necessary during the implementation phase.

ISPARTAKULE'S INCREASING PRIVILEGE WITH THE SPECIAL LIVING BEAUTIES OF BIZIM EVLER



The images and information in this brochure are for informational purposes. The application project is valid for the project's flats' sizes and site lists. The company has the right to make any changes it deems necessary during the implementation phase.

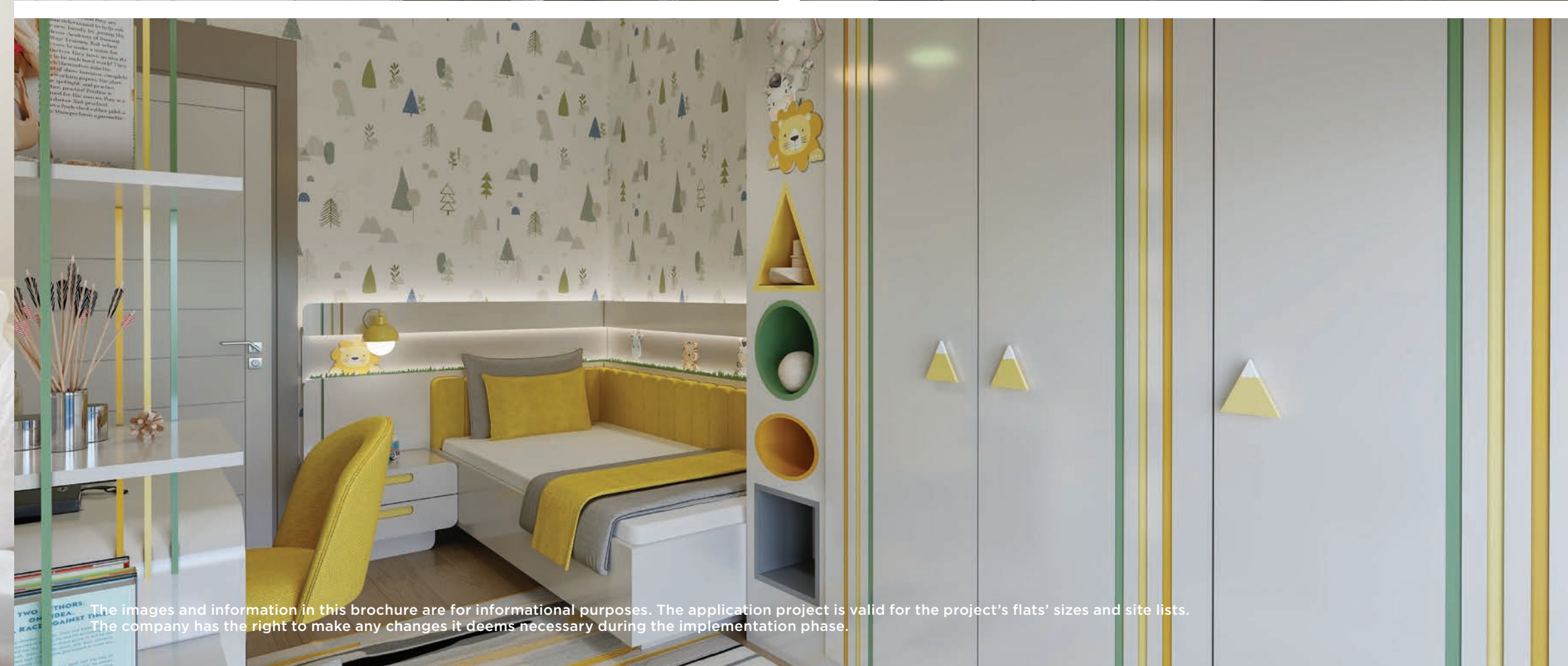
ALL YOUR NEEDS ARE IN YOUR HANDS

Bizim Evler 9 saves time with its shopping units located just below your residence. It offers you a new shopping space consisting of shops, cafes and restaurants.





The images and information in this brochure are for informational purposes. The application project is valid for the project's flats' sizes and site lists. The company has the right to make any changes it deems necessary during the implementation phase.



The images and information in this brochure are for informational purposes. The application project is valid for the project's flats' sizes and site lists. The company has the right to make any changes it deems necessary during the implementation phase.

FRESHNESS OF THE GREEN TURNS INTO THE SERENITY OF YOUR FAMILY

Bizim Evler 9 changes the standards of your daily life with its unique landscape designed with rich flora and ornamental pools, bicycle and walking tracks and children's playgrounds.



SIGNATURE FOR THE FUTURE



The images and information in this brochure are for informational purposes. The application project is valid for the project's flats' sizes and site lists. The company has the right to make any changes it deems necessary during the implementation phase.

HIDDEN BEAUTIES WITH HAPPINESS EVERYWHERE

A good time with your family awaits you at every spot.
Happiness overflowing from your garden spreads to your environment.
While your children; your most valuable ones in your life, are playing
games in front of your eyes, you will dream about their future.



UNCHANGING QUALITY CONTINUES TO CHANGE LIVES



The images and information in this brochure are for informational purposes. The application project is valid for the project's flats' sizes and site lists. The company has the right to make any changes it deems necessary during the implementation phase.

FITNESS IS OUR SPIRIT

You can relieve the tiredness of the day with the fitness center equipped with high quality equipment, sauna and Turkish bath. Social and sports facilities are waiting for you at Bizim Evler.





The images and information in this brochure are for informational purposes. The application project is valid for the project's flats' sizes and site lists. The company has the right to make any changes it deems necessary during the implementation phase.



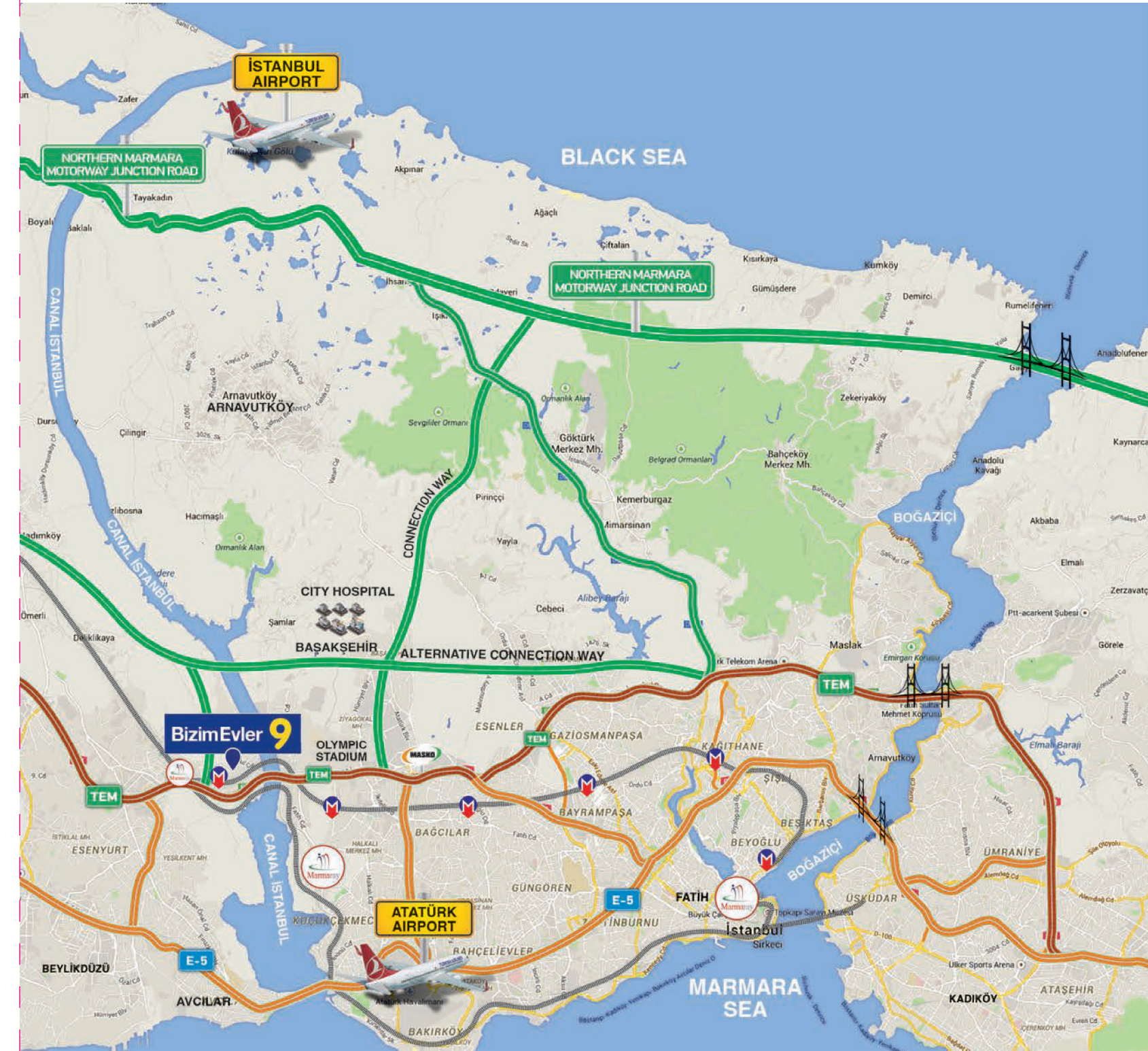
The images and information in this brochure are for informational purposes. The application project is valid for the project's flats' sizes and site lists. The company has the right to make any changes it deems necessary during the implementation phase.

THE RIGHT CHOICE FOR BOTH LIVING AND INVESTING

The right choice for both living and investing...

With the planned urbanization model and the Canal Istanbul Project to be built, Ispartakule's attractiveness is increasing day by day, and Ispartakule has turned into an exemplary living center.

Bizim Evler 9, right next to the TEM Motorway's Ispartakule toll booths, provides great convenience in transportation, being in close location to Bahçeşehir - Halkalı Marmaray Train Line and planned Mahmutbey - Bahçeşehir - Esenyurt metro line, additionally its direct connection to Yavuz Sultan Selim Bridge and Istanbul Airport.



CANAL İSTANBUL



METRO



İSTANBUL AIRPORT



HIGH SPEED TRAIN



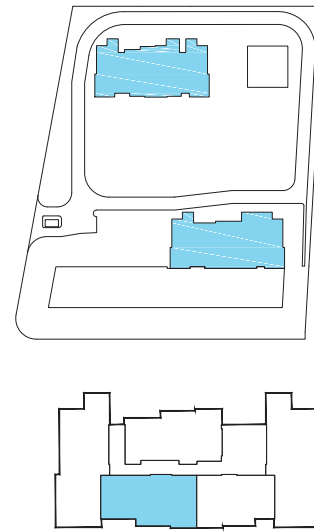
**MOST
IMPORTANTLY,
FOR YOUR
INCREASED LIFE
QUALITY;
BİZİM EVLER 9**



The images and information in this brochure are for informational purposes. The application project is valid for the project's flats' sizes and site lists. The company has the right to make any changes it deems necessary during the implementation phase.

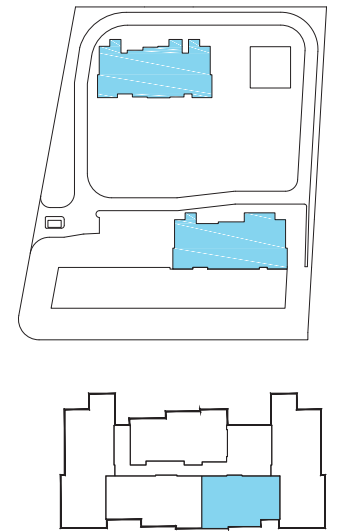
3+1 A

A1-A2 BLOCK

Residence gross area being sold: 174.00 m²

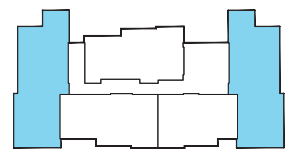
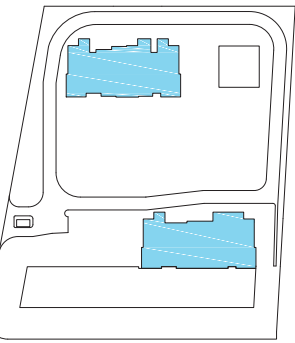
3+1 C

A1-A2 BLOCK

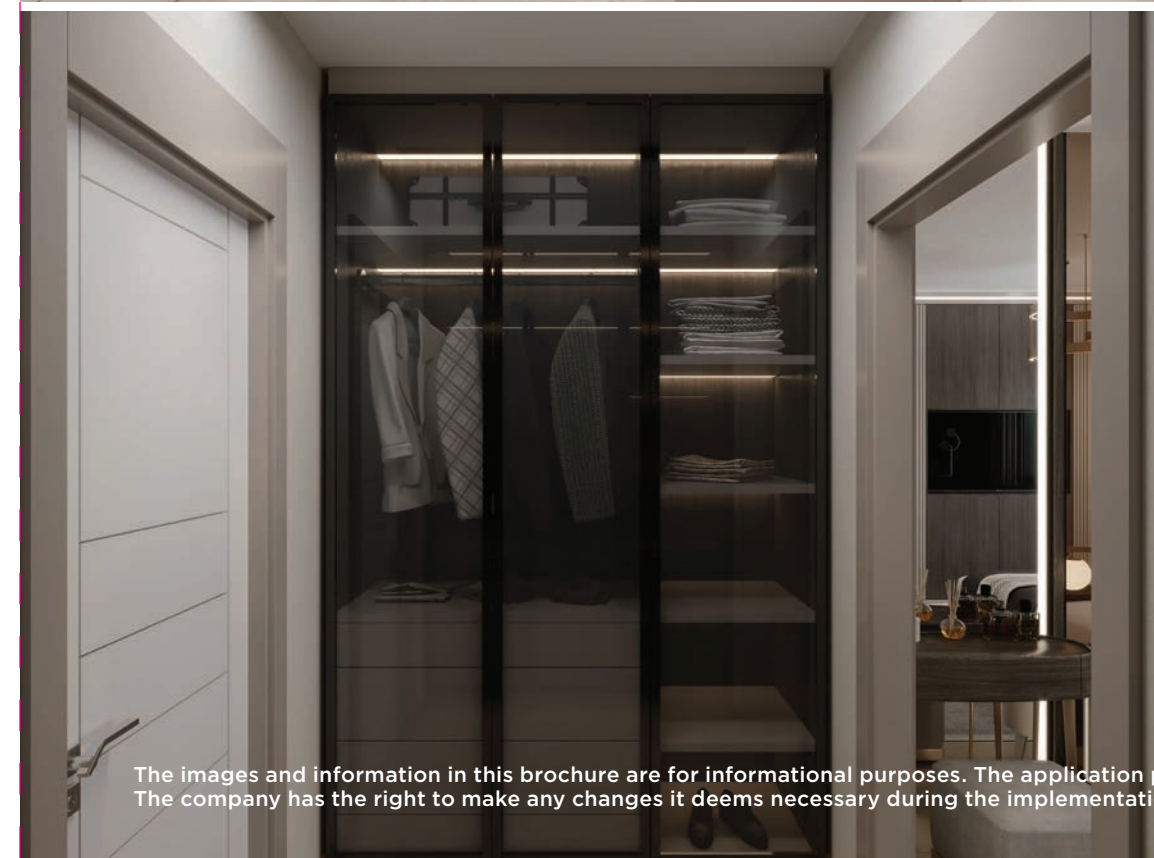
Residence gross area being sold: 144.00 m²

4+1 A

A1-A2 BLOCK

Residence gross area being sold: 226.00 m²

This plan has been prepared for general informational purposes, and the company has the right to make any changes it deems technically necessary. Space furnishings are shown as examples and may differ according to the block and floor.



The images and information in this brochure are for informational purposes. The application project is valid for the project's flats' sizes and site lists. The company has the right to make any changes it deems necessary during the implementation phase.



Projects that turn into happiness with İhlas Holding quality and assurance



Bizim Evler 1



Bizim Evler 2



Bizim Evler 3



Bizim Evler 4



Bizim Evler 5



Bizim Evler 6



Bizim Evler 7



Bizim Evler 8



Bizim Evler Güzelce



İhlas Armutlu Holiday Resort



İhlas Yuva Site



İhlas Marmara Villas



İhlas Marmara Evleri 1



İhlas Marmara Evleri 2



İhlas Marmara Evleri 3



İhlas Marmara Evleri 4

Bizim Evler 9