



THE EIGHTY THREE

— DUBAI SOUTH —



OKSA DEVELOPER



THE EIGHTY THREE

DUBAI SOUTH



FOURTH FLOOR

FLOOR PLAN 1. All dimensions are in imperial and metric, and measured from finish to finish excluding construction tolerances. 2. All materials, dimensions, and drawings are approximately only. 3. Information is subject to change without notice, at developer's absolute discretion. 4. Actual area may vary from the stated area. 5. Drawings not to scale. 6. All images used are for illustrative purposes only and do not represent the actual size, features, specifications, fittings, and furnishings. 7. The developer reserves the right to make revisions / alterations, at it's absolute discretion, without any liability whatsoever.



THE EIGHTY THREE
DUBAI SOUTH

2 BHK - FLAT NO 401
LEVEL -4

SUITE AREA	92.08 SQ.M	991.14 SQ.FT
BALCONY AREA	98.61 SQ.M	1061.44 SQ.FT
TOTAL AREA	190.69 SQ.M	2052.58 SQ.FT



KEY PLAN

UNIT PLAN : 1. All dimensions are in imperial and metric, and measured from finish to finish excluding construction tolerances. 2. All materials, dimesions, and drawings are approximately only. 3. Information is subject to change without notice, at developer's absolute discretion. 4. Actual area may vary from the stated area. 5. Drawings not to scale. 6. All images used are for illustrative purposes only and do not represent the actual size, features, specifications, fittings, and furnishings. 7. The developer reserves the right to make revisions / alterations, at it's absolute discretion, without any liability whatsoever.



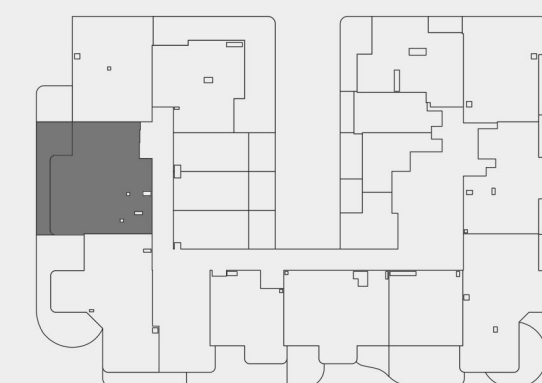
THE EIGHTY THREE

DUBAI SOUTH

2 BHK - FLAT NO 402

LEVEL -4

SUITE AREA	88.21 SQ.M	949.48 SQ.FT
BALCONY AREA	21.08 SQ.M	226.90 SQ.FT
TOTAL AREA	109.29 SQ.M	1176.38 SQ.FT



KEY PLAN

UNIT PLAN : 1. All dimensions are in imperial and metric, and measured from finish to finish excluding construction tolerances. 2. All materials, dimensions, and drawings are approximately only. 3. Information is subject to change without notice, at developer's absolute discretion. 4. Actual area may vary from the stated area. 5. Drawings not to scale. 6. All images used are for illustrative purposes only and do not represent the actual size, features, specifications, fittings, and furnishings. 7. The developer reserves the right to make revisions / alterations, at its absolute discretion, without any liability whatsoever.



THE EIGHTY THREE
DUBAI SOUTH

2 BHK - FLAT NO 403
LEVEL -4

SUITE AREA	77.25 SQ.M	831.51 SQ.FT
BALCONY AREA	69.80 SQ.M	751.32 SQ.FT
TOTAL AREA	147.05 SQ.M	1582.83 SQ.FT



KEY PLAN

UNIT PLAN : 1. All dimensions are in imperial and metric, and measured from finish to finish excluding construction tolerances. 2. All materials, dimesions, and drawings are approximately only. 3. Information is subject to change without notice, at developer's absolute discretion. 4. Actual area may vary from the stated area. 5. Drawings not to scale. 6. All images used are for illustrative purposes only and do not represent the actual size, features, specifications, fittings, and furnishings. 7. The developer reserves the right to make revisions / alterations, at it's absolute discretion, without any liability whatsoever.



THE EIGHTY THREE

DUBAI SOUTH

2 BHK - FLAT NO 404

LEVEL -4



SUITE AREA	62.81 SQ.M	676.08 SQ.FT
BALCONY AREA	57.62 SQ.M	620.22 SQ.FT
TOTAL AREA	120.43 SQ.M	1296.30 SQ.FT



KEY PLAN

UNIT PLAN : 1. All dimensions are in imperial and metric, and measured from finish to finish excluding construction tolerances. 2. All materials, dimensions, and drawings are approximately only. 3. Information is subject to change without notice, at developer's absolute discretion. 4. Actual area may vary from the stated area. 5. Drawings not to scale. 6. All images used are for illustrative purposes only and do not represent the actual size, features, specifications, fittings, and furnishings. 7. The developer reserves the right to make revisions / alterations, at it's absolute discretion, without any liability whatsoever.

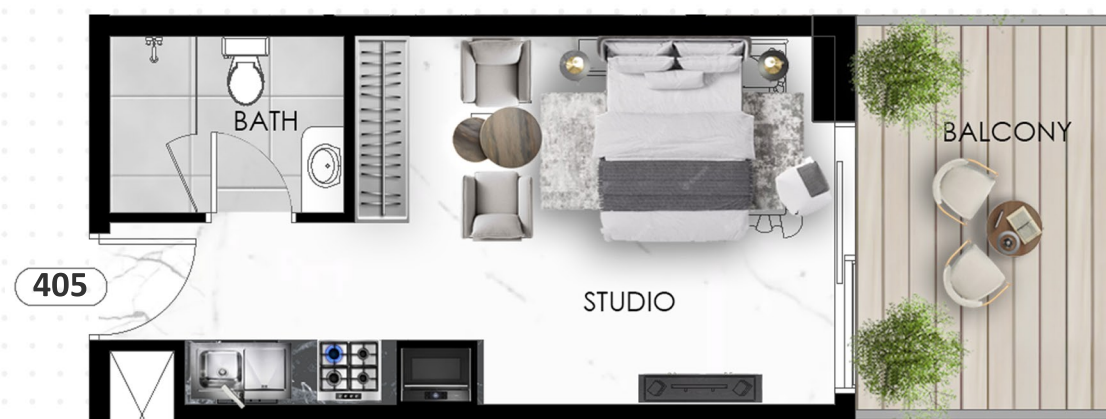


THE EIGHTY THREE

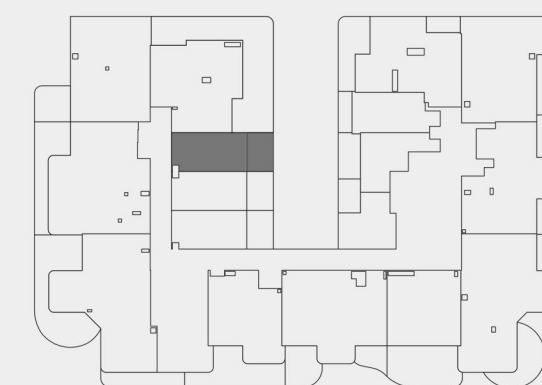
DUBAI SOUTH

STUDIO - FLAT NO 405

LEVEL -4



SUITE AREA	25.02 SQ.M	269.31 SQ.FT
BALCONY AREA	9.48 SQ.M	102.04 SQ.FT
TOTAL AREA	34.50 SQ.M	371.35 SQ.FT



KEY PLAN

UNIT PLAN : 1. All dimensions are in imperial and metric, and measured from finish to finish excluding construction tolerances. 2. All materials, dimensions, and drawings are approximately only. 3. Information is subject to change without notice, at developer's absolute discretion. 4. Actual area may vary from the stated area. 5. Drawings not to scale. 6. All images used are for illustrative purposes only and do not represent the actual size, features, specifications, fittings, and furnishings. 7. The developer reserves the right to make revisions / alterations, at it's absolute discretion, without any liability whatsoever.

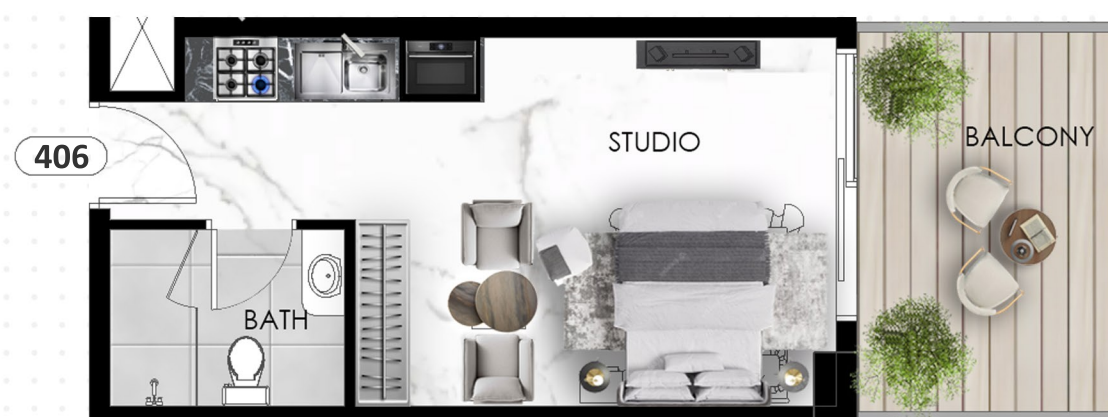


THE EIGHTY THREE

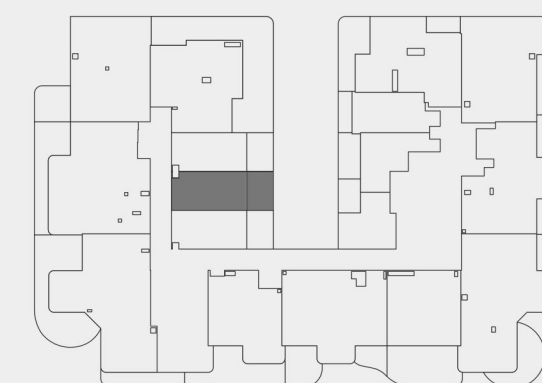
DUBAI SOUTH

STUDIO - FLAT NO 406

LEVEL -4



SUITE AREA	25.05 SQ.M	269.63 SQ.FT
BALCONY AREA	9.32 SQ.M	100.32 SQ.FT
TOTAL AREA	34.37 SQ.M	369.95 SQ.FT



KEY PLAN

UNIT PLAN : 1. All dimensions are in imperial and metric, and measured from finish to finish excluding construction tolerances. 2. All materials, dimesions, and drawings are approximately only. 3. Information is subject to change without notice, at developer's absolute discretion. 4. Actual area may vary from the stated area. 5. Drawings not to scale. 6. All images used are for illustrative purposes only and do not represent the actual size, features, specifications, fittings, and furnishings. 7. The developer reserves the right to make revisions / alterations, at it's absolute discretion, without any liability whatsoever.

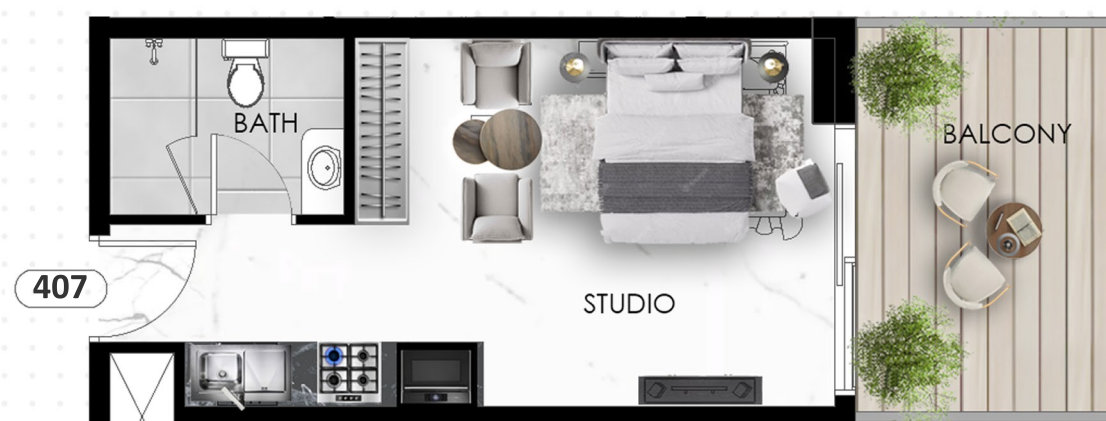


THE EIGHTY THREE

DUBAI SOUTH

STUDIO - FLAT NO 407

LEVEL -4



SUITE AREA	25.07 SQ.M	269.85 SQ.FT
BALCONY AREA	9.30 SQ.M	100.10 SQ.FT
TOTAL AREA	34.37 SQ.M	369.95 SQ.FT



KEY PLAN

UNIT PLAN : 1. All dimensions are in imperial and metric, and measured from finish to finish excluding construction tolerances. 2. All materials, dimesions, and drawings are approximately only. 3. Information is subject to change without notice, at developer's absolute discretion. 4. Actual area may vary from the stated area. 5. Drawings not to scale. 6. All images used are for illustrative purposes only and do not represent the actual size, features, specifications, fittings, and furnishings. 7. The developer reserves the right to make revisions / alterations, at it's absolute discretion, without any liability whatsoever.



THE EIGHTY THREE

DUBAI SOUTH

STUDIO - FLAT NO 408

LEVEL -4



SUITE AREA	23.64 SQ.M	254.46 SQ.FT
BALCONY AREA	6.73 SQ.M	72.44 SQ.FT
TOTAL AREA	30.37 SQ.M	326.90 SQ.FT



KEY PLAN

UNIT PLAN : 1. All dimensions are in imperial and metric, and measured from finish to finish excluding construction tolerances. 2. All materials, dimensions, and drawings are approximately only. 3. Information is subject to change without notice, at developer's absolute discretion. 4. Actual area may vary from the stated area. 5. Drawings not to scale. 6. All images used are for illustrative purposes only and do not represent the actual size, features, specifications, fittings, and furnishings. 7. The developer reserves the right to make revisions / alterations, at it's absolute discretion, without any liability whatsoever.



THE EIGHTY THREE

DUBAI SOUTH

STUDIO - FLAT NO 409

LEVEL -4



SUITE AREA	26.17 SQ.M	281.69 SQ.FT
BALCONY AREA	8.90 SQ.M	95.80 SQ.FT
TOTAL AREA	35.07 SQ.M	377.49 SQ.FT



KEY PLAN

UNIT PLAN : 1. All dimensions are in imperial and metric, and measured from finish to finish excluding construction tolerances. 2. All materials, dimensions, and drawings are approximately only. 3. Information is subject to change without notice, at developer's absolute discretion. 4. Actual area may vary from the stated area. 5. Drawings not to scale. 6. All images used are for illustrative purposes only and do not represent the actual size, features, specifications, fittings, and furnishings. 7. The developer reserves the right to make revisions / alterations, at it's absolute discretion, without any liability whatsoever.

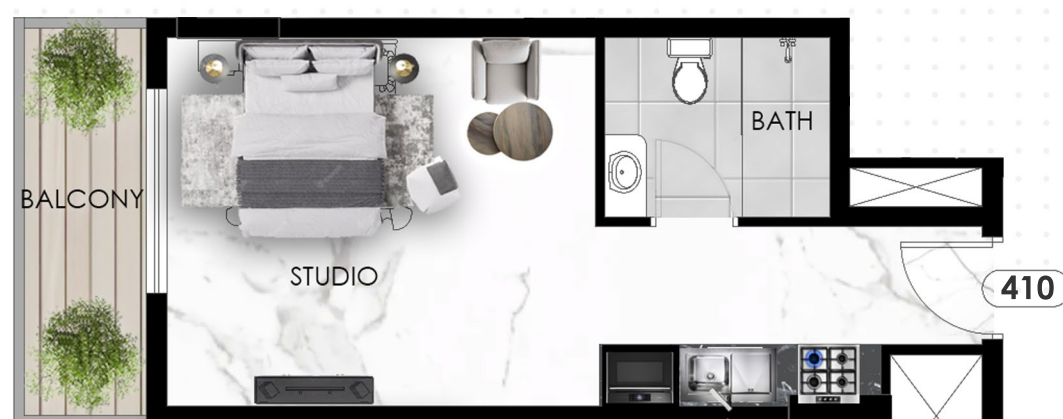


THE EIGHTY THREE

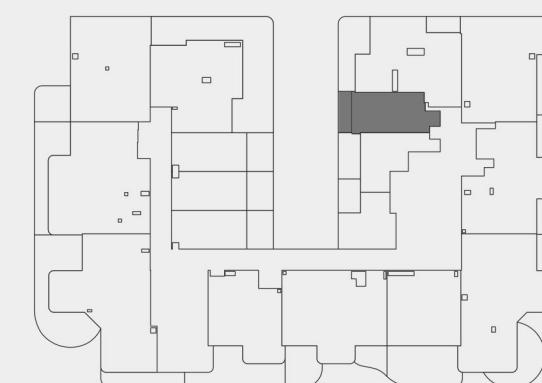
DUBAI SOUTH

STUDIO - FLAT NO 410

LEVEL -4



SUITE AREA	27.85 SQ.M	299.77 SQ.FT
BALCONY AREA	5.22 SQ.M	56.19 SQ.FT
TOTAL AREA	33.07 SQ.M	355.96 SQ.FT



KEY PLAN

UNIT PLAN : 1. All dimensions are in imperial and metric, and measured from finish to finish excluding construction tolerances. 2. All materials, dimensions, and drawings are approximately only. 3. Information is subject to change without notice, at developer's absolute discretion. 4. Actual area may vary from the stated area. 5. Drawings not to scale. 6. All images used are for illustrative purposes only and do not represent the actual size, features, specifications, fittings, and furnishings. 7. The developer reserves the right to make revisions / alterations, at it's absolute discretion, without any liability whatsoever.



THE EIGHTY THREE

DUBAI SOUTH

2 BHK - FLAT NO 411

LEVEL -4



SUITE AREA	63.87 SQ.M	687.49 SQ.FT
BALCONY AREA	19.76 SQ.M	212.69 SQ.FT
TOTAL AREA	83.63 SQ.M	900.19 SQ.FT



KEY PLAN

UNIT PLAN : 1. All dimensions are in imperial and metric, and measured from finish to finish excluding construction tolerances. 2. All materials, dimesions, and drawings are approximately only. 3. Information is subject to change without notice, at developer's absolute discretion. 4. Actual area may vary from the stated area. 5. Drawings not to scale. 6. All images used are for illustrative purposes only and do not represent the actual size, features, specifications, fittings, and furnishings. 7. The developer reserves the right to make revisions / alterations, at it's absolute discretion, without any liability whatsoever.



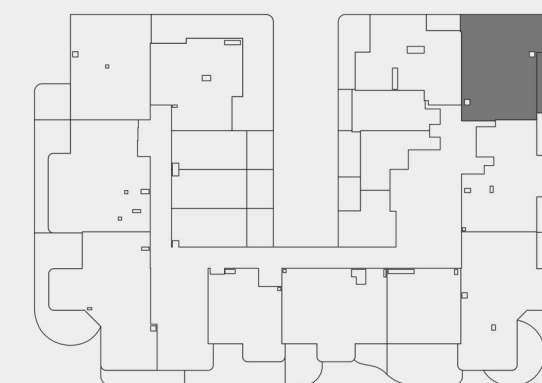
THE EIGHTY THREE

DUBAI SOUTH

2 BHK - FLAT NO 412

LEVEL -4

SUITE AREA	76.56 SQ.M	824.08 SQ.FT
BALCONY AREA	14.22 SQ.M	153.06 SQ.FT
TOTAL AREA	90.78 SQ.M	977.15 SQ.FT



KEY PLAN

UNIT PLAN : 1. All dimensions are in imperial and metric, and measured from finish to finish excluding construction tolerances. 2. All materials, dimensions, and drawings are approximately only. 3. Information is subject to change without notice, at developer's absolute discretion. 4. Actual area may vary from the stated area. 5. Drawings not to scale. 6. All images used are for illustrative purposes only and do not represent the actual size, features, specifications, fittings, and furnishings. 7. The developer reserves the right to make revisions / alterations, at it's absolute discretion, without any liability whatsoever.



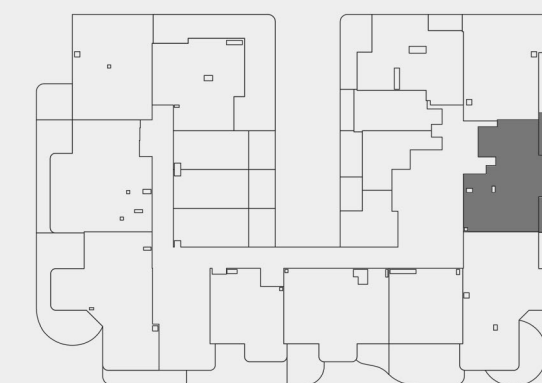
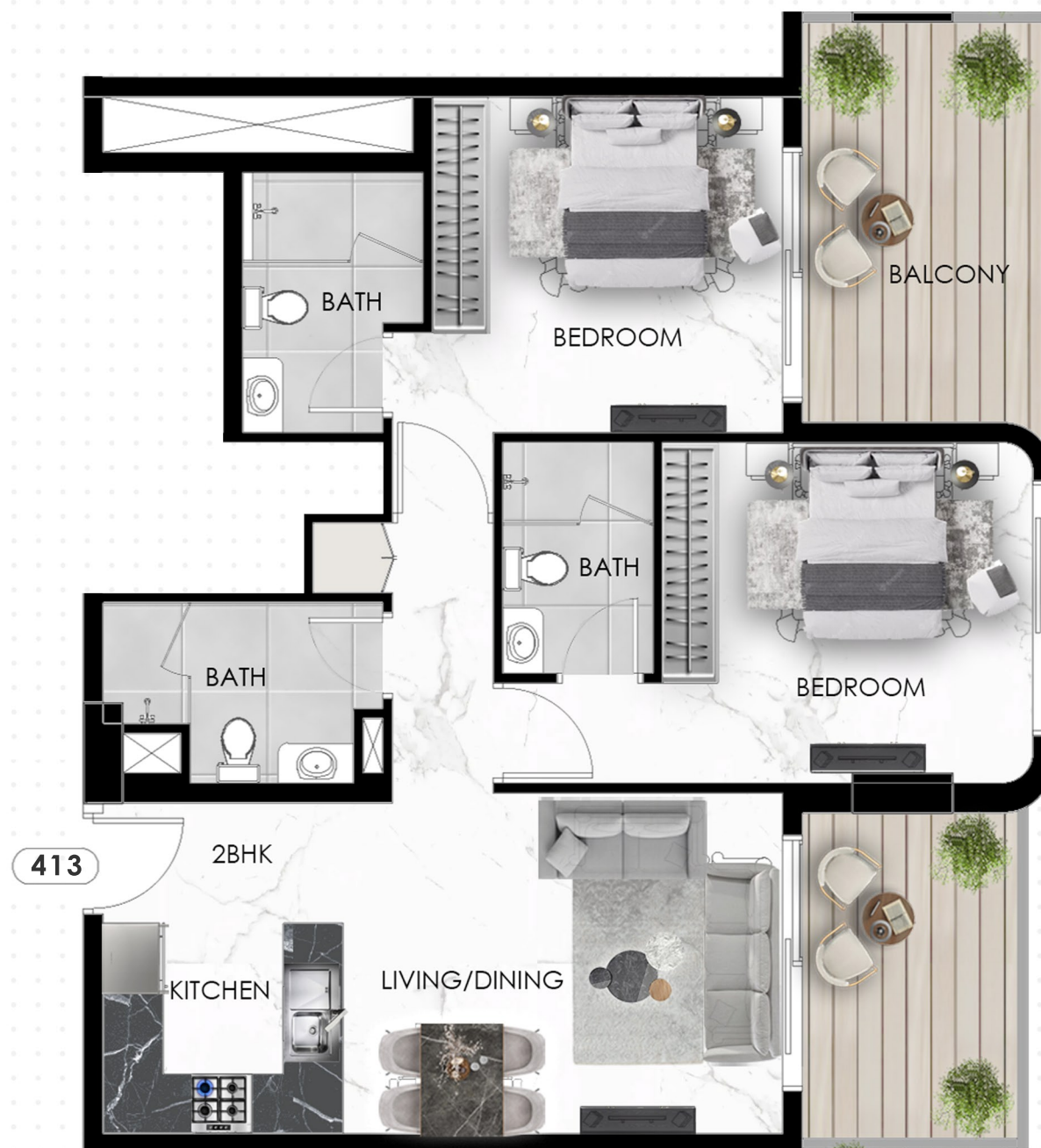
THE EIGHTY THREE

DUBAI SOUTH

2 BHK - FLAT NO 413

LEVEL -4

SUITE AREA	71.49 SQ.M	769.51 SQ.FT
BALCONY AREA	19.62 SQ.M	311.19 SQ.FT
TOTAL AREA	91.11 SQ.M	1080.70 SQ.FT



KEY PLAN

UNIT PLAN : 1. All dimensions are in imperial and metric, and measured from finish to finish excluding construction tolerances. 2. All materials, dimensions, and drawings are approximately only. 3. Information is subject to change without notice, at developer's absolute discretion. 4. Actual area may vary from the stated area. 5. Drawings not to scale. 6. All images used are for illustrative purposes only and do not represent the actual size, features, specifications, fittings, and furnishings. 7. The developer reserves the right to make revisions / alterations, at it's absolute discretion, without any liability whatsoever.



THE EIGHTY THREE

DUBAI SOUTH

2 BHK - FLAT NO 414

LEVEL -4

SUITE AREA	90.51 SQ.M	974.24 SQ.FT
BALCONY AREA	101.85 SQ.M	1096.30 SQ.FT
TOTAL AREA	192.36 SQ.M	2070.55 SQ.FT



KEY PLAN

UNIT PLAN : 1. All dimensions are in imperial and metric, and measured from finish to finish excluding construction tolerances. 2. All materials, dimensions, and drawings are approximately only. 3. Information is subject to change without notice, at developer's absolute discretion. 4. Actual area may vary from the stated area. 5. Drawings not to scale. 6. All images used are for illustrative purposes only and do not represent the actual size, features, specifications, fittings, and furnishings. 7. The developer reserves the right to make revisions / alterations, at its absolute discretion, without any liability whatsoever.



THE EIGHTY THREE

DUBAI SOUTH

1 BHK - FLAT NO 415

LEVEL -4

SUITE AREA	46.83 SQ.M	504.07 SQ.FT
BALCONY AREA	26.46 SQ.M	284.81 SQ.FT
TOTAL AREA	73.29 SQ.M	788.89 SQ.FT



KEY PLAN

UNIT PLAN : 1. All dimensions are in imperial and metric, and measured from finish to finish excluding construction tolerances. 2. All materials, dimensions, and drawings are approximately only. 3. Information is subject to change without notice, at developer's absolute discretion. 4. Actual area may vary from the stated area. 5. Drawings not to scale. 6. All images used are for illustrative purposes only and do not represent the actual size, features, specifications, fittings, and furnishings. 7. The developer reserves the right to make revisions / alterations, at it's absolute discretion, without any liability whatsoever.



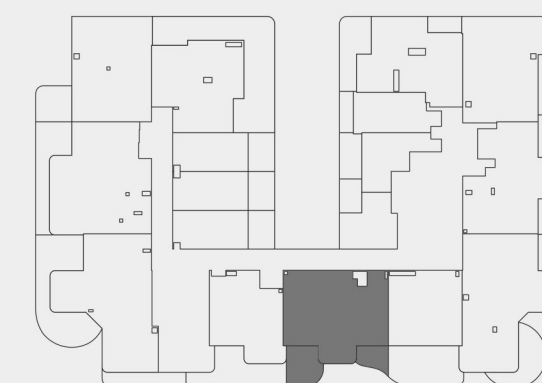
THE EIGHTY THREE

DUBAI SOUTH

2 BHK - FLAT NO 416

LEVEL -4

SUITE AREA	72.29 SQ.M	778.12 SQ.FT
BALCONY AREA	19.97 SQ.M	214.96 SQ.FT
TOTAL AREA	92.26 SQ.M	993.08 SQ.FT



KEY PLAN

UNIT PLAN : 1. All dimensions are in imperial and metric, and measured from finish to finish excluding construction tolerances. 2. All materials, dimensions, and drawings are approximately only. 3. Information is subject to change without notice, at developer's absolute discretion. 4. Actual area may vary from the stated area. 5. Drawings not to scale. 6. All images used are for illustrative purposes only and do not represent the actual size, features, specifications, fittings, and furnishings. 7. The developer reserves the right to make revisions / alterations, at it's absolute discretion, without any liability whatsoever.



THE EIGHTY THREE

DUBAI SOUTH

1 BHK - FLAT NO 417

LEVEL -4

SUITE AREA	49.42 SQ.M	531.95 SQ.FT
BALCONY AREA	24.12 SQ.M	259.63 SQ.FT
TOTAL AREA	73.54 SQ.M	791.58 SQ.FT



KEY PLAN

UNIT PLAN : 1. All dimensions are in imperial and metric, and measured from finish to finish excluding construction tolerances. 2. All materials, dimensions, and drawings are approximately only. 3. Information is subject to change without notice, at developer's absolute discretion. 4. Actual area may vary from the stated area. 5. Drawings not to scale. 6. All images used are for illustrative purposes only and do not represent the actual size, features, specifications, fittings, and furnishings. 7. The developer reserves the right to make revisions / alterations, at it's absolute discretion, without any liability whatsoever.



THE EIGHTY THREE

— DUBAI SOUTH —

by



OKSA DEVELOPER