



**فام القابضة**  
**FAM HOLDING**

+971 4 3517250

info@famholding.com

+971 4 3515159

www.famholding.com



www.famholding.com







# ساركوا SARKOA Tower

يعد برج ساركوا ثورة في عالم العقارات لما به من عراقة التصميم وفخامة التطوير. ويرجع تسمية برج ساركوا بهذا الاسم نسبة إلى إمارة الشارقة، بحيث كانت تسمى (ساركوا) قبل آلاف السنين وبناء على ذلك قمنا بدمج أصالة الماضي وثقافة المستقبل.

**SARKOA TOWER** is revolution in real estate world as it is ancient in design and luxurious in development. The name of **SARKOA** relates to the Emirate of Sharjah as it was named (**SARKOA**) thousands of years ago. According to that we had merged the authenticity of the past with the culture of Future.



Our ethics  
are as important to us as  
**OUR EXISTENCE**

معاييرنا... تعتبر مهمة لنا مثل وجودنا

## CHAIRMAN MESSAGE



FAM Holding is a conglomerate of business solutions across a number of industries having diversified investments in the region. Since our founding in early 2006, we have been moving forward aggressively on many fronts to capitalize on solid growth opportunities, to improve our operating efficiency, to expand our global presence and to sharpen our business portfolio's focus on our core businesses.

FAM Holding, with a rich heritage, strong convictions and fair business principles is ideally positioned to leverage its strengths and make optimum use of resources to become one of the most sought after business houses in the region. The long-term aim is to create a broad range of innovative industries that will generate a steady flow of new ideas and technologies and advances.

Firmly networked into the global economy, these industries will transform UAEs economic role and will contribute to the development of national and regional economies.

As a part of global expansion strategy we are rapidly growing with offices in different parts of the MENA region and in Europe. Our transparent way of working helps us to establish a strong bond with our business partners & investors, and carve a niche for ourselves as one of the best in the region.

Take the first step towards developing positive relationships by allowing us to share our experience and expertise in the art of doing business.

Dr. Faisal Ali Mousa



## LOCATION

# SARKOA TOWER

IS LOCATED IN PRIME LOCATION OF  
Sharjah, U.A.E At Gamal Abdul Nasser

## LOCATION STRATEGY

**Your Dreams are True With Us..**

In the age of speediness , we have found a way to keep in line with technology , to exceed it , via projects that gather between practical life and high thinking .

استراتيجية الموقع

**أحلامك لدينا حقيقة**

في عصر السرعة وجدنا طريقا لمواكبة التكنولوجيا بل والتفوق عليها وذلك من خلال مشاريع تجمع بين الحياة العملية والرقمي الفكري.



# LOCATION

- دقيقة واحدة من كورنيش الشارقة (كورنيش البحيرة)
- ٢٥ دقيقة من مطار الشارقة الدولية
- ٣٠ من مطار دبي الدولي
- ٤٠ دقيقة من برج خليفة

- A minutes from Sharjah Cornish (Cornish Al Buheira)
- 25 minutes from International Sharjah Airport
- 30 minutes from International Dubai Airport
- 40 minutes from Khalifa Tower

موقع برج ساركوا الخلاب المطل على كورنيش البحيرة والواجهة المائية (المجاز) التي تتميز بحديقة رائعة حيث تعتبر من أكبر المساحات الخضراء في الإمارات، زينت بعدد كبير من أشجار النخيل كما تتمتع بمساحات واسعة للعب الاطفال وممارسة الرياضة بأنواعها المشي والركض وركوب الدراجة عدد وافر من المطاعم الراقية التي تناسب جميع الأذواق. بالإضافة إلى الخدمات المصرفية والتجارية على مسافة قريبة

The astonishing location of **SARKOA** , which overlooks Al Buhaira Corniche and the aqua frontage ( Al MAJAZ ) , which is distinguished by a wonderful park , which is considered one of the biggest green areas in the Emirates , which is ornamented by a big number of palm trees . It is also has wide areas for children's games and for children to practice different types of sports such as walking , running and cycling . There are sufficient numbers of luxurious restaurants that suit all tastes , in addition to nearby bank and commercial services







## بناء مميز في الشارقة **UNIQUE TOWER** IN SHARJAH

**SARKOA TOWER** represents a residential project that gives a new sense of luxury, in its distinctive location in the heart of Sharjah, the Capital of Islamic Culture , and its fascinating location on Khalid Lagoon Corniche and Al Wahda Street from the other side , as the tower provides all factors of a practical and hi- life. It gathers luxurious engineering design, comfortable space and distinctive style.

All these advantages are in Abdul Naser Area which is full of life.



يمثل برج ساركوا مشروعاً سكنياً يرسى مفهوماً جديداً للرفاهية بموقعة المميز في قلب الشارقة عاصمة الثقافة الإسلامية حيث يطل على كورنيش بحيرة خالد وطريق شارع الوحدة من الجهة الاخرى ويوفر كل مقومات الحياة العملية والراقية فهو يجمع بين التصميم الهندسي الفاخر والمساحة المريحة والطراز المتميز ، كل هذه المميزات بمنطقة جمال عبد الناصر المفعمة بالحياة .







- ## خدمات البرج Tower Services
- هايبر ماركت ٢٤ ساعة
  - مقهى ومطعم
  - صالة رياضية للرجال + صالة رياضية للنساء
  - لأول مرة ملعب تنس
  - حمام سباحة للرجال + حمام سباحة للنساء
  - نظام مراقبة ذكية للشقق
  - نظام حراسة ٢٤ ساعة
  - نظام مراقبة بالكاميرات
  - Hypermarket 24 hours
  - Cafe and Restaurant
  - Gym (Men only & Women only)
  - For the first time a Tennis Court
  - Swimming pool for Men + Swimming pool for Women
  - Intelligent control system Apartments
  - 24-hour guard system
  - Camera surveillance system

« لأول مرة في الشارقة - مضمار جري مع ملعب تنس على ارتفاع ٣٥ متر من سطح الارض »  
" The first time in Sharjah – Running Course with Tennis Court at 35 ms. high up the surface of Earth "







## DARING THOUGHTS AND VELVET DESIGNS

An engineer is known by his big fondness in displaying daring and various thoughts especially through designs of fascinating and beautiful shapes , in addition to many technical accessories to décor as such touches are changed into antiques distributed across the house from the main entrance to the bedrooms .

Beauty has its own story which is told among the internal engineering threads , and thoughts are mixed between old and new and the engineer's ability to translate the house owner's dreams to reality . That is a philosophy which is related to areas , lines , colors and lighting and the last technical touch .

Hence , it is a story to be told . Our engineers could write its lines in this place which had been changed from empty areas to an engineering plate which is full of innovation .

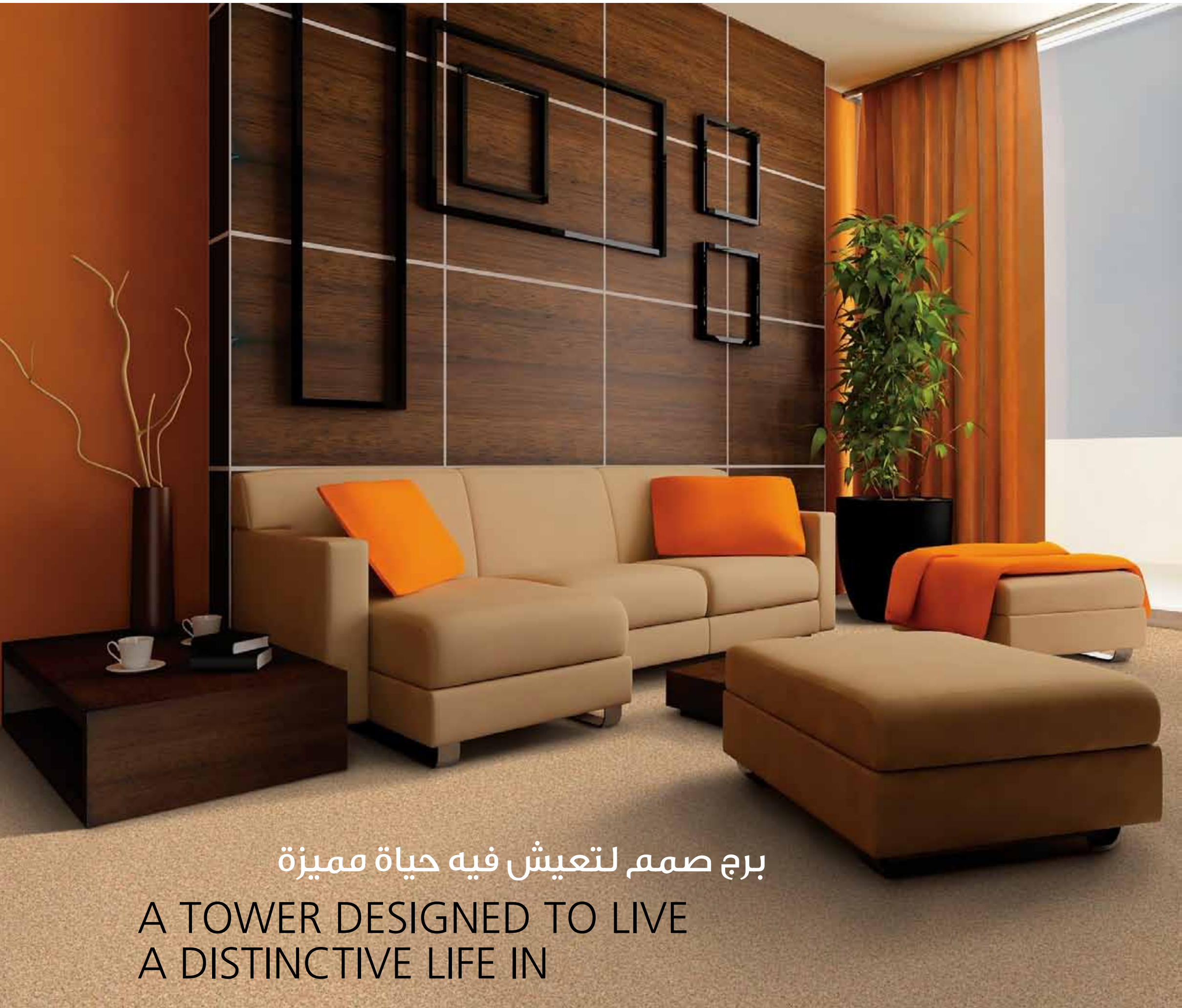
## أفكار جريئة وتصاميم مخملية

يعرف عن أي مهندس شغفه الكبير في طرح أفكار جريئة ومتنوعة وخاصة من خلال تصاميم لأشكال فاتنة وجميلة، مضاف إليها العديد من الإكسسوارات الفنية للديكور الداخلي حيث تتحول هذه اللمسات الى تحف موزعة في أرجاء المنزل من المدخل الرئيسي الى غرفة النوم .

وللجمال قصة تروى بين خيوط الهندسة الداخلية وتشابك الأفكار بين قديم وجديد وقدرة المهندس على ترجمة احلام صاحب البيت على أرض الواقع، وتلك فلسفة مرتبطة بالمساحات والخطوط والألوان والإضاءة .. واللمسة الفنية الأخيرة .

إذن.. إنها قصة تروى وقد استطاعوا مهندسينا من كتابة سطورها في هذا المكان الذي تحول من مساحات فارغة الى لوحة هندسية تنبض بالإبداع.





برج صمم لتعيش فيه حياة مميزة

A TOWER DESIGNED TO LIVE  
A DISTINCTIVE LIFE IN

### SARKOA TOWER Real Estate Minaret

A building that gives you whatever you want from the peak of innovation in order to live a distinct and unique life .

SARKOA TOWER gives you whatever you an ideal opportunity for a calm life where relaxation and enjoyment of natural views overlooking Khalid Lagoon and Al Majaz Park which makes you live in a world of innovation .



### منارة الإبداع العقاري

بناء يمنحك كل ما تريد من قمة الإبداع  
لتعيش حياة فريدة ومميزة. يمنحك  
برج ساركوا فرص مثالية للحياة  
الهادئة حيث الاسترخاء والاستمتاع  
بالمناظر الطبيعية المطلة على  
بحيرة خالد وحديقة المجاز مما يجعلك  
تعيش في عالم من الإبداع.





WE BELIEVE OUR BASIC PRINCIPLES, WHICH INCLUDE **INTEGRITY, UNDERSTANDING, EXCELLENCE** UNITY AND RESPONSIBILITY, ARE INTEGRAL TO OUR SURVIVAL

SARKOA TOWER had been designed by high technology of welfare to be a an aspect of commercial development and cultural growth .

The tower introduces a new architectural thinking and high administrative development as it is considered the first tower in the Emirate of Sharjha with which a tennis court is attached, and it is considered the first hung passage as it is added to many luxurious aspects .

**FAM Holdings ... Endless Borders**

نحن نؤمن بمبادئنا الأساسية، التي تشمل  
**النزاهة، التفاهم، والتميز**

الانسجام والمسؤولية، هي جزء لا يتجزأ من بقائنا

تم تصميم برج ساركوا بتقنية عالية من الرقي والرفاهية ليكون  
مظهراً من مظاهر التنمية الإقتصادية والنمو الثقافي.

ويقدم فكراً معمارياً جديداً وتطور إداري راقى حيث يعد أول برج في  
إمارة الشارقة ملحق به ملعب تنس وأول ممشى معلق حيث يضاف  
إلى عديد من مظاهر الرفاهية.

فام القابضة ... حدود بلا نهاية



### TYPICAL FLOOR PLAN

FROM 12 TO 39 FLOOR

TOWER PLAN :	
0	GROUND FLOOR
1 - 6	PARKING FLOOR
7 - 10	OFFICES
11	HEALTHY CLUB
12 - 39	RESIDENTIAL TYPICAL FLOOR
40 - 41	DUPLEX FLOOR



### 1ST OFFICE PLAN (FLOOR 7<sup>th</sup>)



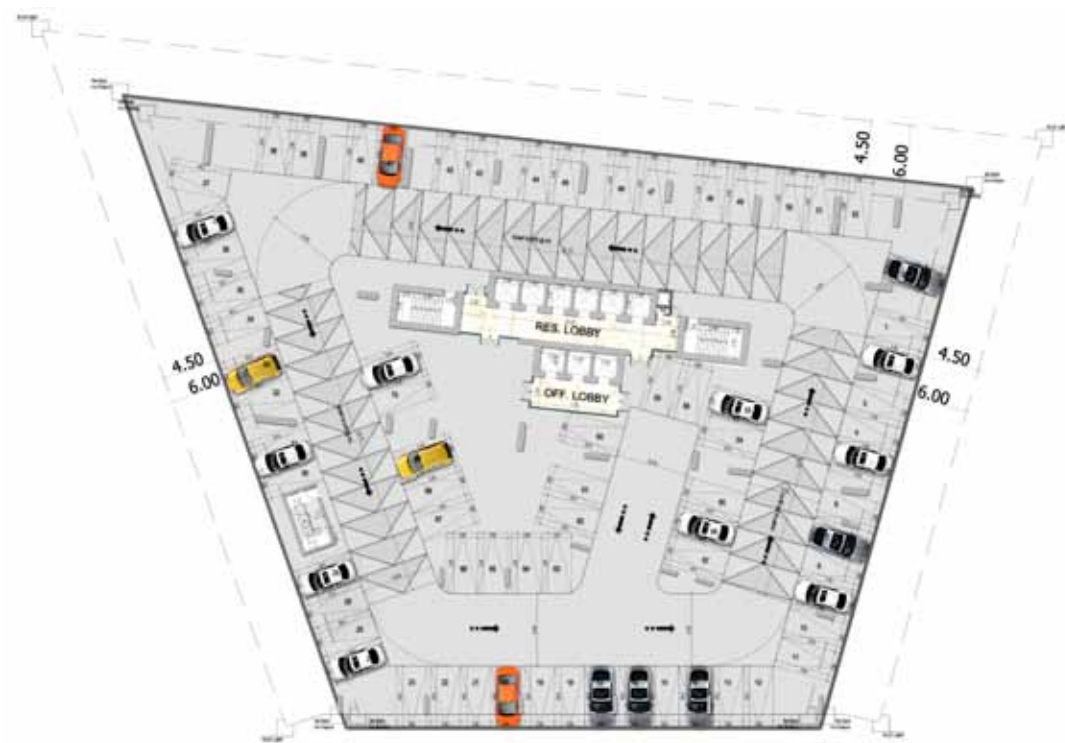
### 2ND TO 4TH OFFICE (FLOOR 8-10)



### GROUND FLOOR PLAN



### PARKING PLAN



### HEALTH CLUB PLAN (FLOOR 11<sup>th</sup>)







# SARKOA Tower

## APPARTMENT 1 2 Bedroom

Flat Area: 1,442.43 sq.ft  
134.005 sq.m



1	Bedroom	4.91 x 3.70 m
2	Bedroom	4.00 x 3.50 m
3	Living Room	5.31 x 3.50 m
4	Kitchen	3.42 x 2.70 m
5	Bathroom	2.30 x 1.70 m
6	Toilet	1.70 x 1.10 m
7	Balcony	3.85 x 1.00 m
8	Store	1.70 x 1.10 m



## APPARTMENT 2 3 Bedroom

Flat Area: 1741.51 sq.ft  
161.79 sq.m



1	Bedroom	4.14 x 3.50 m
2	Bedroom	3.54 x 4.30 m
3	Bedroom	4.59 x 3.50 m
4	Living Room	7.11 x 3.50 m
5	Kitchen	3.20 x 2.50 m
6	Bathroom	2.00 x 1.70 m
7	Bathroom	2.47 x 1.70 m
8	Toilet	1.40 x 1.57 m
9	Balcony	3.05 x 1.00 m







# SARKOA Tower

## APPARTMENT 3 1 Bedroom

Flat Area: 951.72 sq.ft  
88.417 sq.m

1	Bedroom	4.53 x 3.50 m
2	Living Room	5.10 x 3.50 m
3	Kitchen	3.00 x 2.50 m
4	Bathroom	2.20 x 1.70 m
5	Toilet	1.10 x 1.60 m
6	Balcony	3.45 x 1.00 m



## APPARTMENT 4 2 Bedroom

Flat Area: 1,436.12 sq.ft  
133.419 sq.m

1	Bedroom	4.55 x 3.50 m
2	Bedroom	4.30 x 3.50 m
3	Living Room	5.50 x 3.50 m
4	Kitchen	3.10 x 3.00 m
5	Bathroom	1.80 x 2.20 m
6	Bathroom	1.80 x 2.20 m
7	Toilet	1.10 x 1.60 m
8	Balcony	3.45 x 1.00 m







# SARKOA Tower

## APPARTMENT 5 2 Bedroom

Flat Area: 1,343.00 sq.ft  
124.768 sq.m



1	Bedroom	4.40 x 3.50 m
2	Bedroom	4.40 x 3.50 m
3	Living Room	6.20 x 3.50 m
4	Kitchen	3.10 x 2.70 m
5	Bathroom	1.70 x 2.00 m
6	Toilet	1.30 x 1.60 m
7	Balcony	3.37 x 1.05 m



All materials dimensions and drawings are approximate. The information is subject to change without prior notice. The developers reserves the right to make revisions. Do not scale drawings.

## APPARTMENT 6 1 Bedroom

Flat Area: 937.71 sq.ft  
87.116 sq.m



1	Bedroom	4.10 x 3.50 m
2	Living Room	4.80 x 3.50 m
3	Kitchen	2.90 x 2.70 m
4	Bathroom	2.20 x 1.70 m
5	Toilet	1.20 x 1.70 m
6	Balcony	3.35 x 1.10 m



Computer renderings displayed are artistic representation of the project. Variations may occur. These Floor plans are for the purpose of demonstration and cannot be considered as final.





# SARKOA Tower

## APPARTMENT 7 1 Bedroom

Flat Area: 912.47 sq.ft  
84.770 sq.m



1	Bedroom	4.10 x 3.50 m
2	Living Room	4.60 x 3.50 m
3	Kitchen	2.90 x 2.70 m
4	Bathroom	2.20 x 1.70 m
5	Toilet	1.20 x 1.80 m
6	Balcony	3.40 x 1.60 m



## APPARTMENT 8 2 Bedroom

Flat Area: 1.491.84 sq.ft  
138.596 sq.m



1	Bedroom	4.50 x 3.50 m
2	Bedroom	4.57 x 3.50 m
3	Living Room	5.10 x 3.50 m
4	Kitchen	4.22 x 2.50 m
5	Bathroom	2.78 x 1.70 m
6	Toilet	1.10 x 2.50 m
7	Balcony	3.50 x 1.10 m
8	Balcony2	3.40 x 1.20 m







# SARKOA Tower

## APPARTMENT 9 2 Bedroom

Flat Area: 1,533.09 sq.ft  
142.428 sq.m

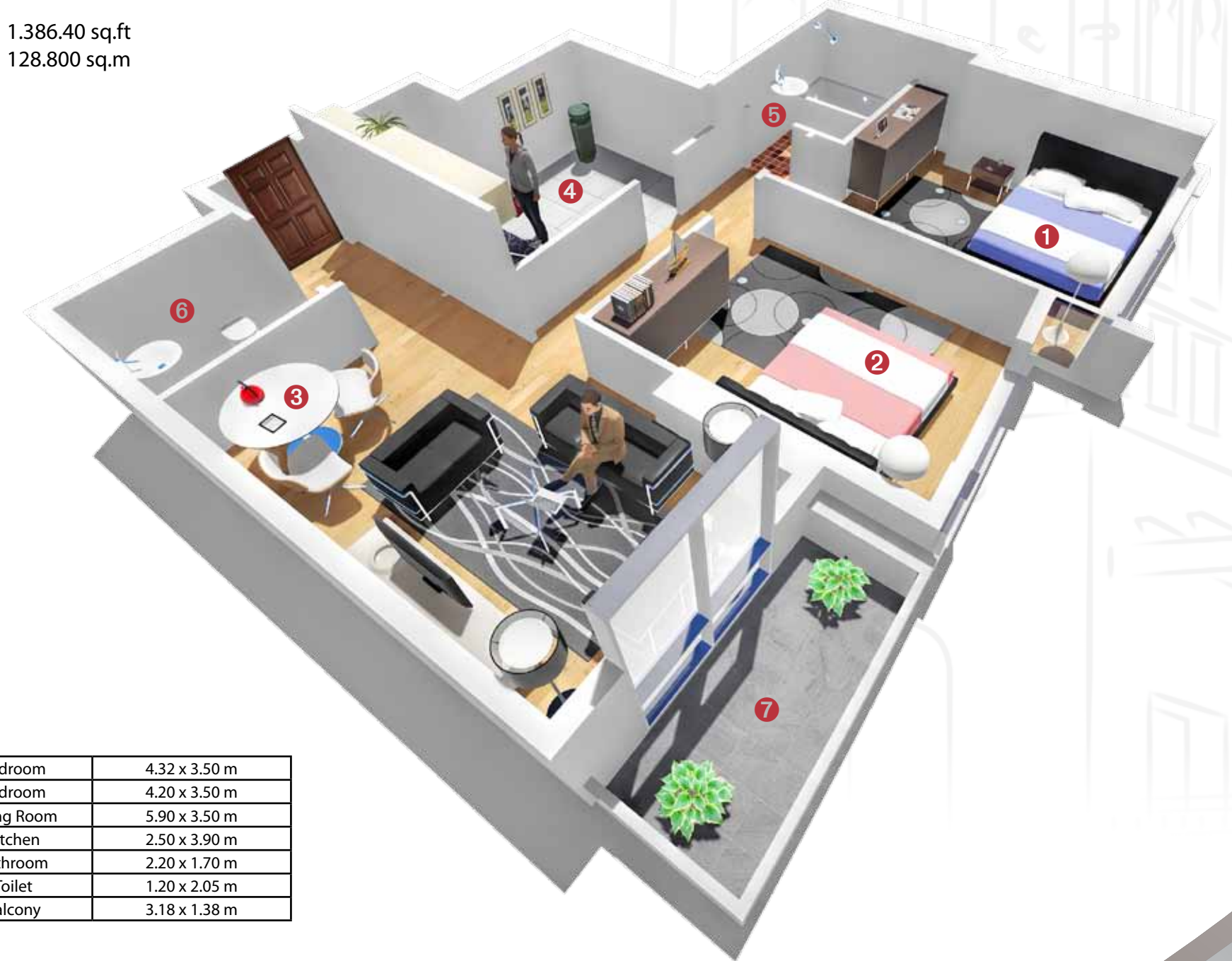


1	Bedroom	4.47 x 3.50 m
2	Bedroom	4.98 x 3.50 m
3	Living Room	6.00 x 3.50 m
4	Kitchen	3.10 x 3.00 m
5	Bathroom	2.20 x 1.80 m
6	Bathroom	2.00 x 1.90 m
7	Toilet	1.20 x 1.80 m
8	Balcony	3.45 x 1.49 m



## APPARTMENT 10 2 Bedroom

Flat Area: 1,386.40 sq.ft  
128.800 sq.m



1	Bedroom	4.32 x 3.50 m
2	Bedroom	4.20 x 3.50 m
3	Living Room	5.90 x 3.50 m
4	Kitchen	2.50 x 3.90 m
5	Bathroom	2.20 x 1.70 m
6	Toilet	1.20 x 2.05 m
7	Balcony	3.18 x 1.38 m







# SARKOA Tower

## APPARTMENT 11 2 Bedroom

Flat Area: 1.370.70 sq.ft  
127.342 sq.m

1	Bedroom	4.22 x 3.51 m
2	Bedroom	4.10 x 3.50 m
3	Living Room	5.51 x 3.50 m
4	Kitchen	3.00 x 2.50 m
5	Bathroom	3.00 x 1.70 m
7	Toilet	1.50 x 1.65 m
8	Balcony	3.90 x 1.00 m



## APPARTMENT 12 3 Bedroom

Flat Area: 1.878.04 sq.ft  
174.474 sq.m

1	Bedroom	4.00 x 4.60 m
2	Bedroom	4.38 x 3.50 m
3	Bedroom	4.00 x 4.60 m
4	Living Room	4.72 x 3.50 m
5	Kitchen	4.00 x 2.50 m
6	Bathroom	2.10 x 1.57 m
7	Bathroom	2.00 x 2.42 m
8	Bathroom	2.19 x 1.70 m
9	Toilet	1.38 x 1.40 m
10	Balcony	3.50 x 1.00 m



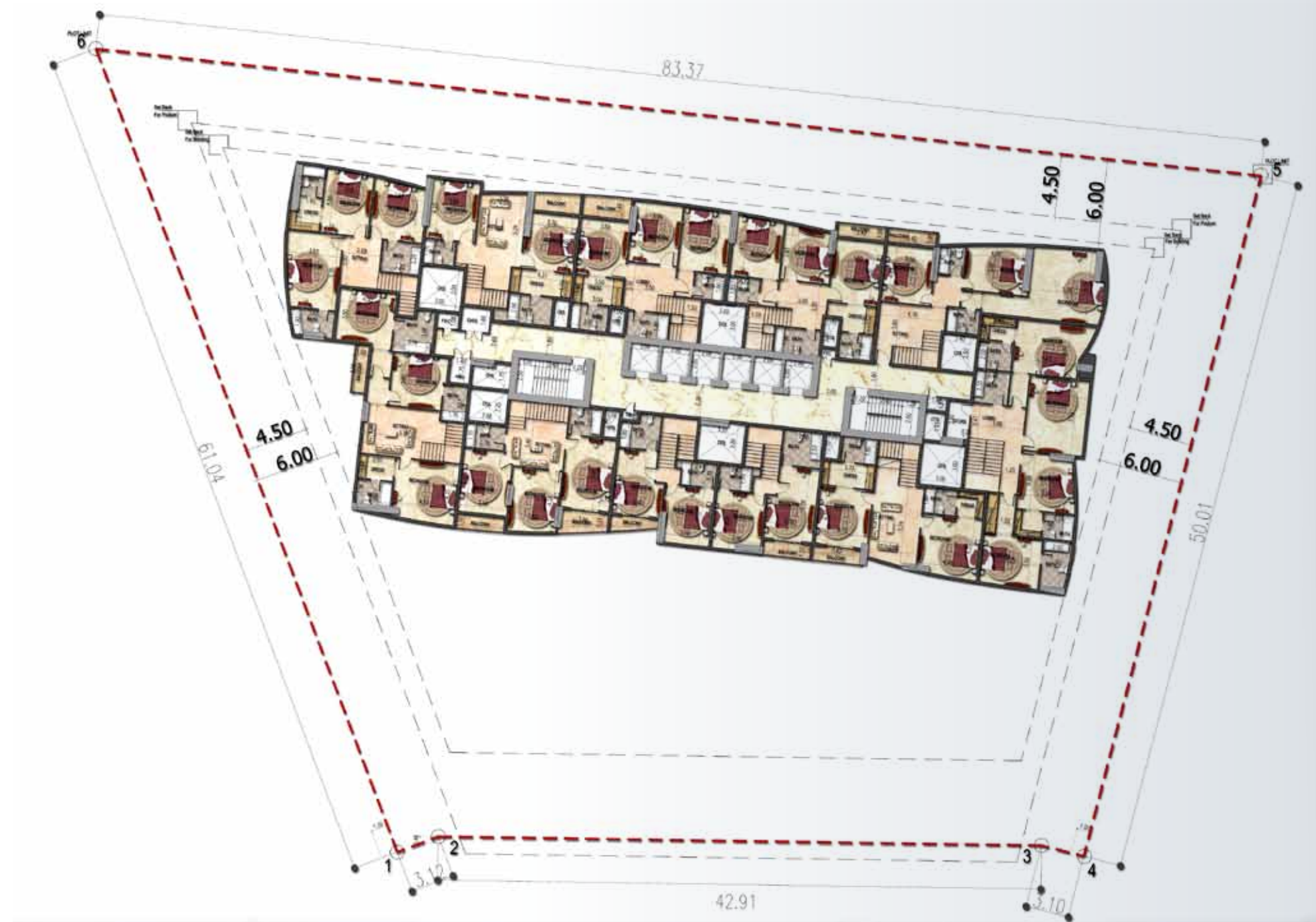


# SARKOA TOWER

DUPLEX 1<sup>ST</sup> FLOOR



DUPLEX 2<sup>ND</sup> FLOOR





Duplex

# SARKOA TOWER

## Duplex 1

THREE BEDROOM

View: Lake/City

Duplex Area:

3017.09 sq.ft  
280.29 sq.m

### GROUND FLOOR

1	Hall	4.19 X 7.31 m
2	Maid Room	2.39 x 2.99 m
3	Kitchen	4.67 x 4.19 m
4	Bathroom	1.58 x 3.03 m
5	Toilet	1.17 x 1.40 m
6	Balcony	3.70 x 1.20 m



### FIRST FLOOR

1	Bedroom	3.50 x 4.42 m
2	Bedroom	3.69 x 4.42 m
3	Bedroom	4.02 x 5.33 m
4	Bathroom	1.70 x 2.00 m
5	Dress	1.70 x 2.32 m
6	Bathroom	2.50 x 2.21 m
7	Bathroom	2.13 x 2.77 m
8	Sitting Area	3.50 x 2.83 m





Duplex

# SARKOA TOWER

## Duplex 2

THREE BEDROOM

View: Lake

Duplex Area:

3507.80 sq.ft  
325.88 sq.m

### GROUND FLOOR

1	Hall	4.51 X 6.81 m
2	Maid Room	2.00 x 2.87 m
3	Kitchen	3.50 x 2.87 m
4	Bathroom	1.53 x 1.40 m
5	Toilet	1.50 x 1.65 m
6	Balcony	3.70 x 1.00 m



### FIRST FLOOR

1	Bedroom	3.86 x 3.93 m
2	Bedroom	3.84 x 3.88 m
3	Bedroom	4.44 x 4.56 m
4	Bathroom	1.70 x 3.81 m
5	Bathroom	1.70 x 2.58 m
6	Bathroom	2.87 x 1.91 m
7	Sitting Area	3.50 x 5.86 m
8	Dress	1.67 x 2.57 m
9	Sitting	3.07 x 2.77 m
10	Balcony	1.00 x 3.84 m





# SARKOA TOWER

## Duplex 3

THREE BEDROOM

View: City

Duplex Area:

3168.40 sq.ft  
294.35 sq.m

### GROUND FLOOR

1	Hall	3.21 X 5.91 m
2	Dining	3.30 x 3.15 m
3	Maid Room	2.62 x 2.09 m
4	Bathroom	1.40 x 2.09 m
5	Bedroom	3.50 x 4.24 m
6	Kitchen	2.50 x 3.93 m
7	Bathroom	1.78 x 3.15 m
8	Toilet	1.20 x 2.05 m
9	Balcony	3.21 x 1.27 m



### FIRST FLOOR

1	Bedroom	4.00 x 3.56 m
2	Bedroom	3.61 x 5.00 m
3	Bathroom	1.91 x 2.27 m
4	Bathroom	3.01 x 2.33 m
5	Dress	1.91 x 3.61 m
6	Sitting Area	5.16 x 3.39 m
7	Balcony	1.38 x 3.61 m





# SARKOA TOWER

## Duplex 4

THREE BEDROOM

View: City

Duplex Area:

3200.87 sq.ft  
297.37 sq.m

### GROUND FLOOR

1	Hall	6.00 X 3.33 m
2	Sitting	3.50 x 6.43 m
3	Maid Room	2.50 x 1.87 m
4	Kitchen	3.21 x 3.66 m
5	Bathroom	1.30 x 2.30 m
6	Toilet	1.13 x 2.00 m
7	Balcony	3.33 x 1.28 m



### FIRST FLOOR

1	Bedroom	3.50 x 4.09 m
2	Bedroom	3.50 x 4.15 m
3	Bedroom	4.09 x 3.50 m
4	Bathroom	1.80 x 2.99 m
5	Bathroom	2.01 x 2.20 m
6	Bathroom	4.00 x 2.32 m
7	Dress	2.50 x 3.50 m
8	Lobby	3.50 x 3.52 m
9	Balcony	1.38 x 3.50 m





# SARKOA TOWER

## Duplex 5

THREE BEDROOM

View: Lake

Duplex Area:

3048.80 sq.ft  
283.24 sq.m

### GROUND FLOOR

1	Hall	7.00 X 6.51 m
2	Maid Room	2.67 x 2.00 m
3	Kitchen	4.40 x 2.48 m
4	Bathroom	1.86 x 1.40 m
5	Toilet	1.20 x 2.29 m
6	Balcony	3.70 x 1.00 m



### FIRST FLOOR

1	Bedroom	3.57 x 4.28 m
2	Bedroom	3.50 x 4.38 m
3	Bedroom	3.50 x 5.29 m
4	Bathroom	1.70 x 2.78 m
5	Bathroom	2.27 x 2.20 m
6	Sitting Area	4.22 x 2.98 m
7	Dress	3.50 x 1.99 m
8	Balcony	1.32 x 3.57 m
9	Balcony2	1.31 x 3.50 m





# SARKOA TOWER

## Duplex 6

TWO BEDROOM

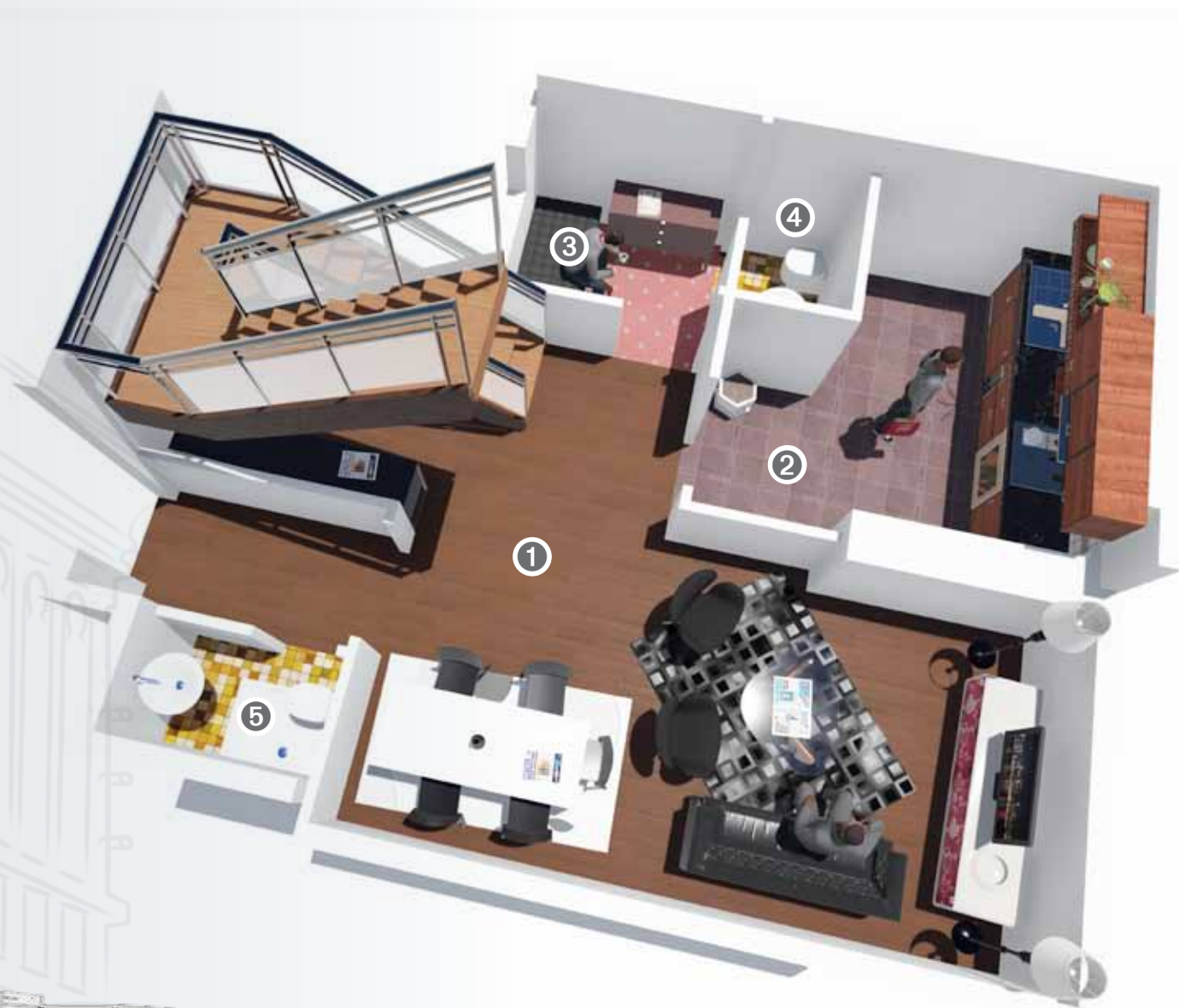
View: Lake

Duplex Area:

2174.19 sq.ft  
201.99 sq.m

### GROUND FLOOR

1	Hall	6.51 x 3.50 m
3	Kitchen	2.50 X 3.60 m
3	Maid Room	1.67 x 2.00 m
4	Bathroom	1.20 x 1.67 m
5	Toilet	1.10 x 1.59 m



### FIRST FLOOR

1	Bedroom	3.50 X 4.92 m
2	Bedroom	3.50 X 4.00 m
3	Bathroom	1.80 X 2.00 m
4	Bathroom	2.30 X 3.00 m
5	Sitting	2.69 X 2.73 m
6	Dress	4.00 x 2.30 m
7	Balcony	1.31 x 3.50 m



Duplex

# SARKOA TOWER

## Duplex 7

TWO BEDROOM

View: Lake

Duplex Area:

2261.62 sq.ft  
210.11 sq.m

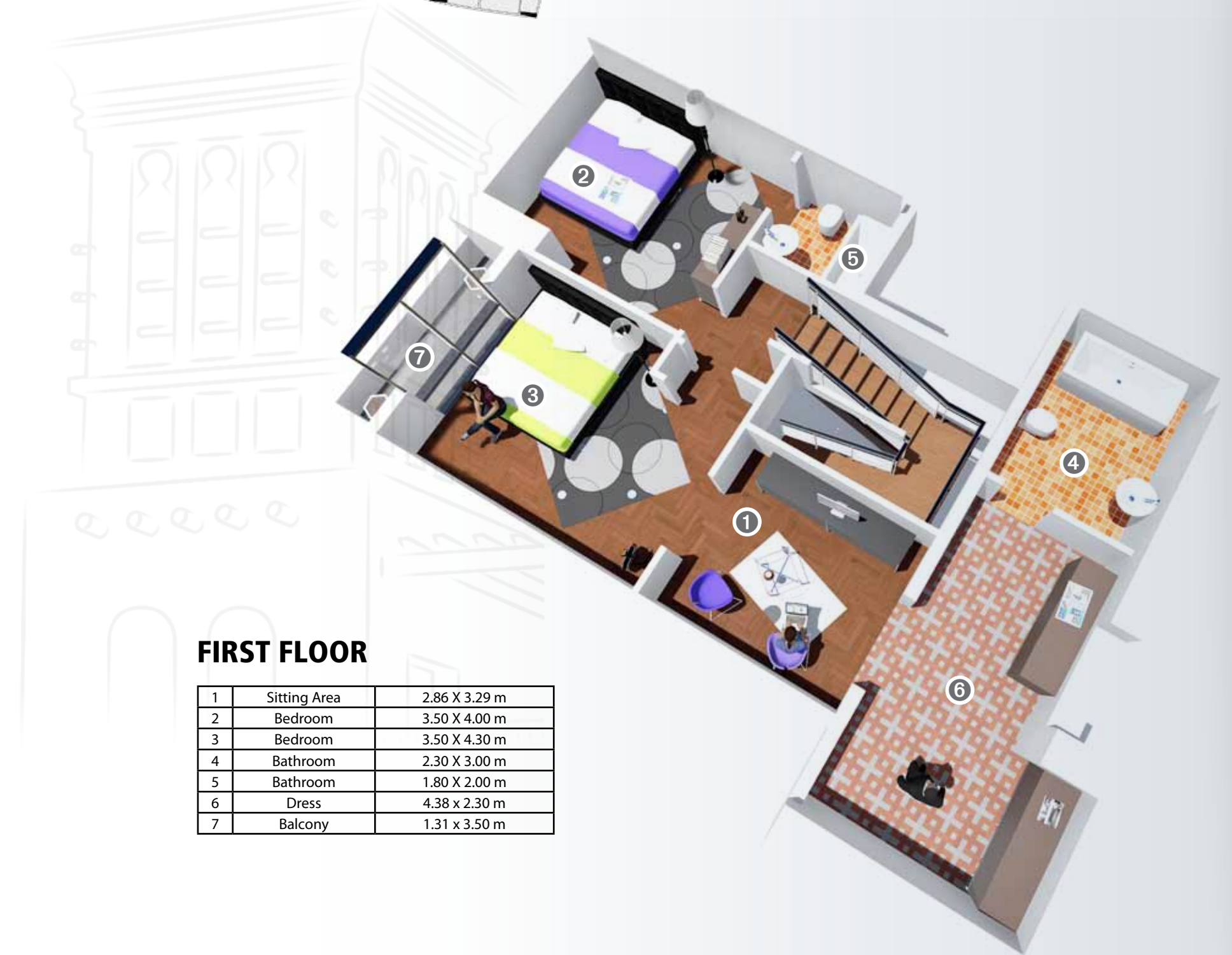
### GROUND FLOOR

1	Hall	3.50 x 6.11 m
3	Kitchen	2.50 X 3.40 m
3	Maid Room	1.90 x 2.17 m
4	Bathroom	1.30 x 2.17 m
5	Toilet	1.20 x 1.70 m



### FIRST FLOOR

1	Sitting Area	2.86 X 3.29 m
2	Bedroom	3.50 X 4.00 m
3	Bedroom	3.50 X 4.30 m
4	Bathroom	2.30 X 3.00 m
5	Bathroom	1.80 X 2.00 m
6	Dress	4.38 x 2.30 m
7	Balcony	1.31 x 3.50 m





# SARKOA TOWER

## Duplex 8

THREE BEDROOM

View: Lake

Duplex Area:

2941.05 sq.ft  
273.23 sq.m

### GROUND FLOOR

1	Hall	6.25 x 5.48 m
2	Kitchen	3.42 x 2.63 m
3	Maid Room	2.02 x 2.00 m
4	Bathroom	1.30 x 2.00 m
5	Bedroom	3.54 x 4.52 m
6	Bathroom	1.70 x 3.54 m
7	Toilet	1.60 x 1.20 m
8	Balcony	6.70 x 1.00 m



### FIRST FLOOR

1	Sitting Area	3.50 X 5.44 m
2	Bedroom	3.80 X 3.72 m
3	Bedroom	4.28 X 4.47 m
4	Dress	1.60 X 3.33 m
5	Dress	1.70 X 1.98 m
6	Bathroom	1.70 X 2.13 m
7	Bathroom	1.70 X 2.30 m
8	Balcony	1.31 x 3.45 m





# SARKOA TOWER

## Duplex 9

THREE BEDROOM

View: City

Duplex Area:

3088.82 sq.ft  
286.96 sq.m

### GROUND FLOOR

1	Hall	3.81 X 5.50 m
2	Sitting	3.50 X 5.88 m
3	Kitchen	3.60 X 3.05 m
4	Maid Room	1.89 X 2.50 m
5	Bathroom	1.30 X 2.48 m
6	Toilet	2.49 X 1.18 m
7	Balcony	3.45 X 1.00 m



### FIRST FLOOR

1	Bedroom	4.09 X 3.50 m
2	Bedroom	3.60 X 3.90 m
3	Bedroom	3.52 X 5.50 m
4	Bathroom	2.70 X 3.68 m
5	Bathroom	2.01 X 2.20 m
6	Bathroom	1.80 X 3.19 m
7	Sitting	3.52 X 5.50 m
8	Dress	1.80 X 2.00 m
9	Balcony	3.45 X 1.00 m





Duplex

# SARKOA TOWER

## Duplex 10

THREE BEDROOM

View: Lake/City

Duplex Area:

3341.95 sq.ft  
310.47 sq.m

### GROUND FLOOR

1	Hall	3.60 x 4.39 m
2	Sitting Area	6.10 x 4.52 m
3	Kitchen	5.31 x 2.66 m
4	Maid Room	1.98 x 2.86 m
5	Bathroom	1.60 x 2.02 m
6	Toilet	1.91 x 1.20 m
7	Balcony	3.45 X 1.00 m



### FIRST FLOOR

1	Sitting	4.83 X 6.20 m
2	Bedroom	3.50 X 4.11 m
3	Bedroom	3.50 X 4.13 m
4	Bedroom	5.24 X 4.94 m
5	Bathroom	2.10 X 1.81 m
6	Bathroom	1.70 X 2.10 m
7	Balcony	1.00 x 3.50 m



SARKOA TOWER



# SARKOA TOWER

## Duplex 11

FOUR BEDROOM

View: Lake/City

Duplex Area:

4804.93 sq.ft  
446.39 sq.m

### GROUND FLOOR

1	Hall	5.30 x 7.12 m
2	Majlis	5.46 x 9.90 m
3	Maid Room	2.80 x 2.48 m
4	Kitchen	4.40 x 2.48 m
5	Bathroom	1.50 x 2.48 m
6	Toilet	1.56 x 1.41 m
7	Balcony	6.70 x 1.00 m



### FIRST FLOOR

1	Bedroom	5.54 x 3.60 m
2	Dress	1.70 X 2.47 m
3	Bathroom	1.80 x 2.47 m
4	Bedroom	4.15 x 5.33 m
5	Sitting Area	5.01 x 3.87 m
6	Bathroom	1.80 x 2.49 m
7	Store	1.56 X 2.70 m
8	Bedroom	3.99 x 3.92 m
9	Dress	1.80 X 1.80 m
10	Bathroom	1.80 x 2.12 m
11	Bedroom	4.20 x 3.81 m
12	Bathroom	3.49 x 2.09 m





المطور



فام القابضة  
**FAM HOLDING**

الإستشاري

International

العالمية

Engineering Consultants ■ ■ ■ للاستشارات الهندسية

Tel: +971 6 575 95 55  
Fax: +971 6 575 95 59  
P.O.Box: 95950, Sharjah  
sharjah@internationalcon.com

المقاول



فام لمقاولات البناء ذ.م.م  
**FAM BUILDING CONTRACTING L.L.C.**

+971 4351 7250 info@famholding.com  
+971 4 3515159 www.famholding.com  
عضو من مجموعة فام القابضة  
Member Of Fam Holding Group