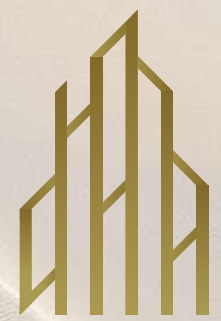




# ELIE SAAB

WATERFRONT

BY OHANA



OHANA DEVELOPMENT

ELIE SAAB

WATERFRONT

BY OHANA

ELIE SAAB WATERFRONT BY OHANA — SHAPING THE FUTURE OF LUXURY LIVING

# ELIE SAAB

WATERFRONT

BY OHANA

01

*The*

## PROJECT

When Art  
meets Architecture

P. 05

02

OHANA

*Developer*

Crafting luxury experiences  
in an ode to Excellence

P. 11

03

ELIE SAAB

*Designer*

The Signature of  
refined aesthetics

P. 14

04

*The*

## LOCATION

Where the delights of Abu Dhabi  
are ever present

P. 17

05

*The*

## INTERIORS

Sophisticated furnishings  
of bespoke beauty

P. 24

06

*Residential*  
AMENITIES

Enriching an unparalleled  
lifestyle

P. 37

# ELIE SAAB

WATERFRONT

BY OHANA



ELIE SAAB

WATERFRONT

BY OHANA

*The*  
**PROJECT**

WHEN ART MEETS ARCHITECTURE



OHANA DEVELOPMENT



ELIE SAAB

WATERFRONT

BY OHANA

PERFECTLY CRAFTED

# A SCULPTURE IN *Motion*

A distinctive duet of *innovative design* and *timeless elegance*, ELIE SAAB Waterfront is a unique residential tower showcasing the art of luxury.

*The first, branded real estate in Abu Dhabi*, a 35-story 'sculpture in motion' crowned by a lavish dual-level penthouse and pool.

# ELIE SAAB

WATERFRONT

BY OHANA

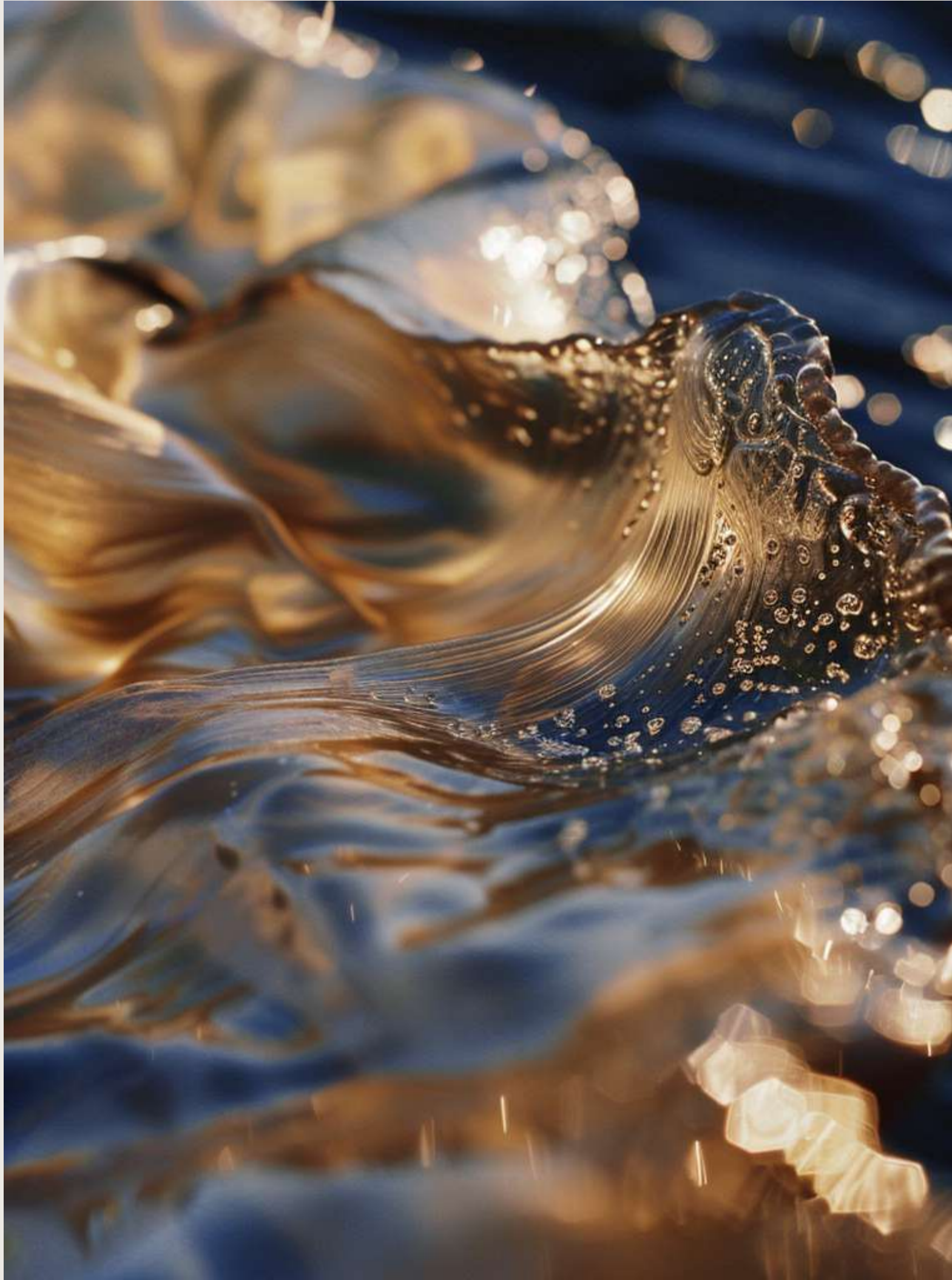
*Elevating* THE ART OF TAILORED ELEGANCE



# ELIE SAAB

WATERFRONT

BY OHANA





# ELIE SAAB

WATERFRONT

BY OHANA



# ELIE SAAB

WATERFRONT

BY OHANA

A MASTERPIECE UNFOLDS

Fluid curves inspired by the ocean evoke the image of a veil swayed by the breeze to accentuate the meticulous details of pure luxury.

An indelible addition to the Abu Dhabi skyline where every contour is a stroke of architectural magnificence. A work of art that embraces *family values* in redefining *luxury coastal living*, a regal home adorned with the signature of ELIE SAAB.



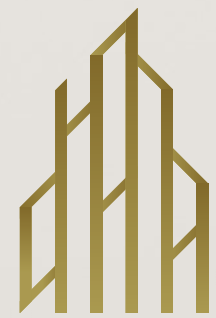
ELIE SAAB

WATERFRONT

BY OHANA

OHANA  
*Developer*

CRAFTING LUXURY EXPERIENCES  
IN AN ODE TO EXCELLENCE



OHANA DEVELOPMENT

ELIE SAAB

WATERFRONT

BY OHANA

MASTERS IN TRANSFORMATION

TURNING DREAMS  
*into Reality*



Ohana shapes the future of luxury living in 3 continents with a mastery in design excellence that is both functional and a work of art, where every aspect is carefully curated to delight and inspire.

*A unique blend of innovation, sophistication, and comfort.*



OHANA DEVELOPMENT

# ELIE SAAB

WATERFRONT

BY OHANA

## COMMITMENT TO INTEGRITY AND QUALITY

With a focus on adaptability and forward thinking, Ohana creates sublime life experiences where quality, customer satisfaction, community-oriented practices and family values are fundamental.

Pairing Ohana's world class expertise with the *creativity and style* of ELIE SAAB has culminated in a residential tower that is a symbol of distinction and elegance, *a branded landmark* of Abu Dhabi, a city in motion.

ELIE SAAB

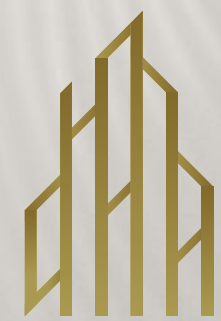
WATERFRONT

BY OHANA

ELIE SAAB

*Designer*

THE SIGNATURE OF REFINED AESTHETICS



OHANA DEVELOPMENT

# ELIE SAAB

WATERFRONT

BY OHANA

FINELY DESIGNED

## *The unique* STYLE OF ELIE SAAB



Founded by Elie Saab in 1982, in a war-torn Beirut, ELIE SAAB was the first Lebanese couture house to be recognized by Camera Nazionale della Moda in Rome (1997) and was among the first international members admitted to the prestigious Chambre Syndical (2003). Known for its exceptional savoir-faire and timeless appeal, ELIE SAAB is recognized as one of the most significant couture houses at the forefront of fashion, sought out by celebrities, royalty, and public figures alike. With ateliers in Paris, Milan, London and Lebanon, and over one hundred boutiques worldwide, the label continues to grow into one of the world's leading luxury lifestyle brands, offering diversified lines, from ready-to-wear and bridal, to accessories, eyewear, children's wear, watches and fragrances. ELIE SAAB recently established MAISON (2019), with signature furniture collections and exclusive interiors for global real-estate ventures.

# ELIE SAAB

WATERFRONT

BY OHANA



A SPECIAL CONCEPT OF LIVING

ELIE SAAB's unique genius lies in the ability to create timeless, enchanting designs that capture the imagination. Ohana had encapsulated this into a residential experience with a distinctive aesthetic of organic, sinuous curves.

Inspired by simplicity and purity, with the dominant motif of Art Déco, the tower captures the essence of ELIE SAAB design, embodying beauty and grace. Its design, with curved balconies and a facade shimmering like silk, *transforms living spaces into art.*



ELIE SAAB

WATERFRONT

BY OHANA

*The*  
**LOCATION**

WHERE THE DELIGHTS OF ABU DHABI  
ARE EVER PRESENT

ELIE SAAB

WATERFRONT

BY OHANA

*Elevating luxury* IN ABU DHABI



ELIE SAAB

WATERFRONT

BY OHANA

AT THE CONFLUENCE

A CITY IN  
*Motion*

Be part of *a new skyline*, a landmark of luxury on *Al Reem Island* with the signature aesthetic of ELIE SAAB mirroring the splendor of Abu Dhabi's cultural richness and dynamic attitude. A prestigious address and a vibrant, cosmopolitan lifestyle.



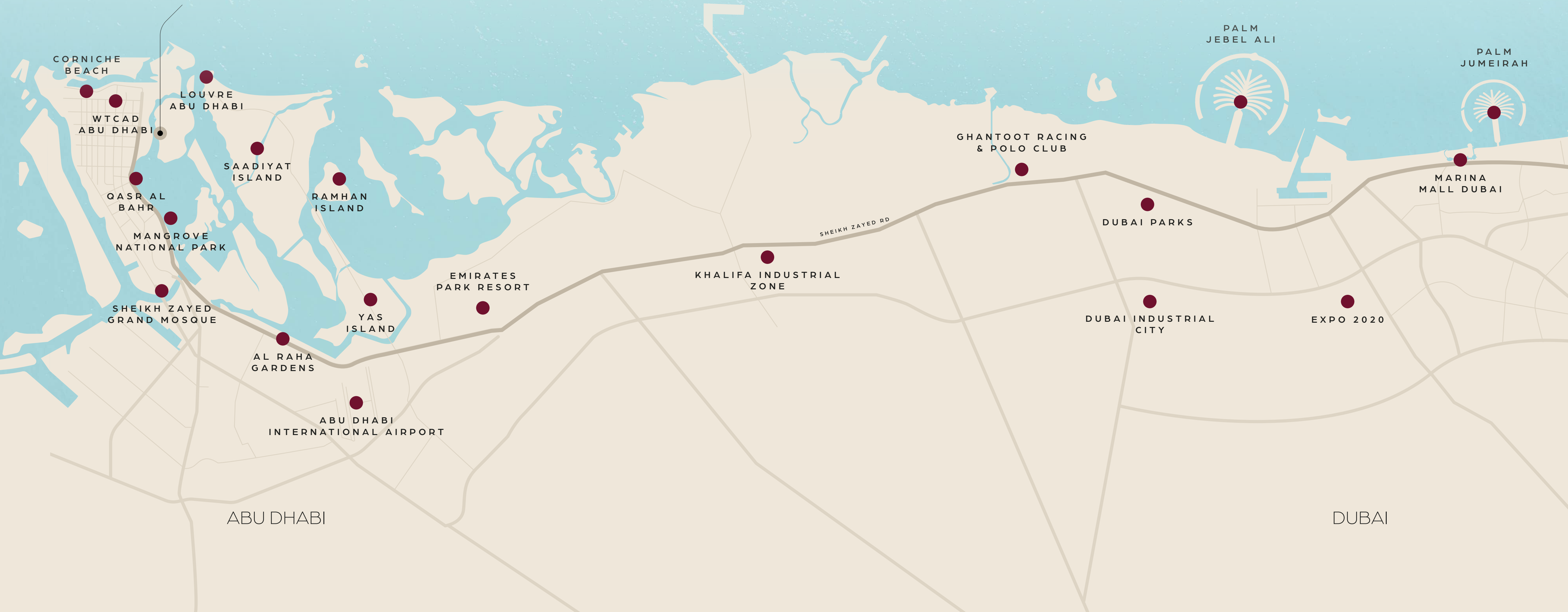
# ELIE SAAB

WATERFRONT

BY OHANA

OUR LOCATION

## *Al Reem Island*





THE GALLERIA  
AL MARYAH ISLAND

CLEVELAND CLINIC  
ABU DHABI

ABU DHABI  
MALL

BEACH  
ROTANA

CARREFOUR  
MARKET

REPTON  
FRY CAMPUS

REEM  
HOSPITAL

AL FAY PARK

REEM MALL

SORBONNE UNIVERSITY  
ABU DHABI

ELIE SAAB

WATERFRONT

BY OHANA

HAZZA BIN ZAYED  
THE FIRST STREET

BURJEEL  
HOSPITAL

QASR  
AL BAHR

GEMS WORLD ACADEMY  
ABU DHABIYN

TO ABU DHABI  
CITY

# ELIE SAAB

WATERFRONT

BY OHANA

A LAVISH MARITIME LIFESTYLE  
WITH URBAN CONVENIENCE

Perfectly positioned to enjoy the dynamic waterfront setting featuring stunning panoramic views of the city skyline, the Arabian Gulf and the yacht marina. Experience the timeless chic of the city's most coveted locales, mere moments from the commercial pulse of Abu Dhabi.

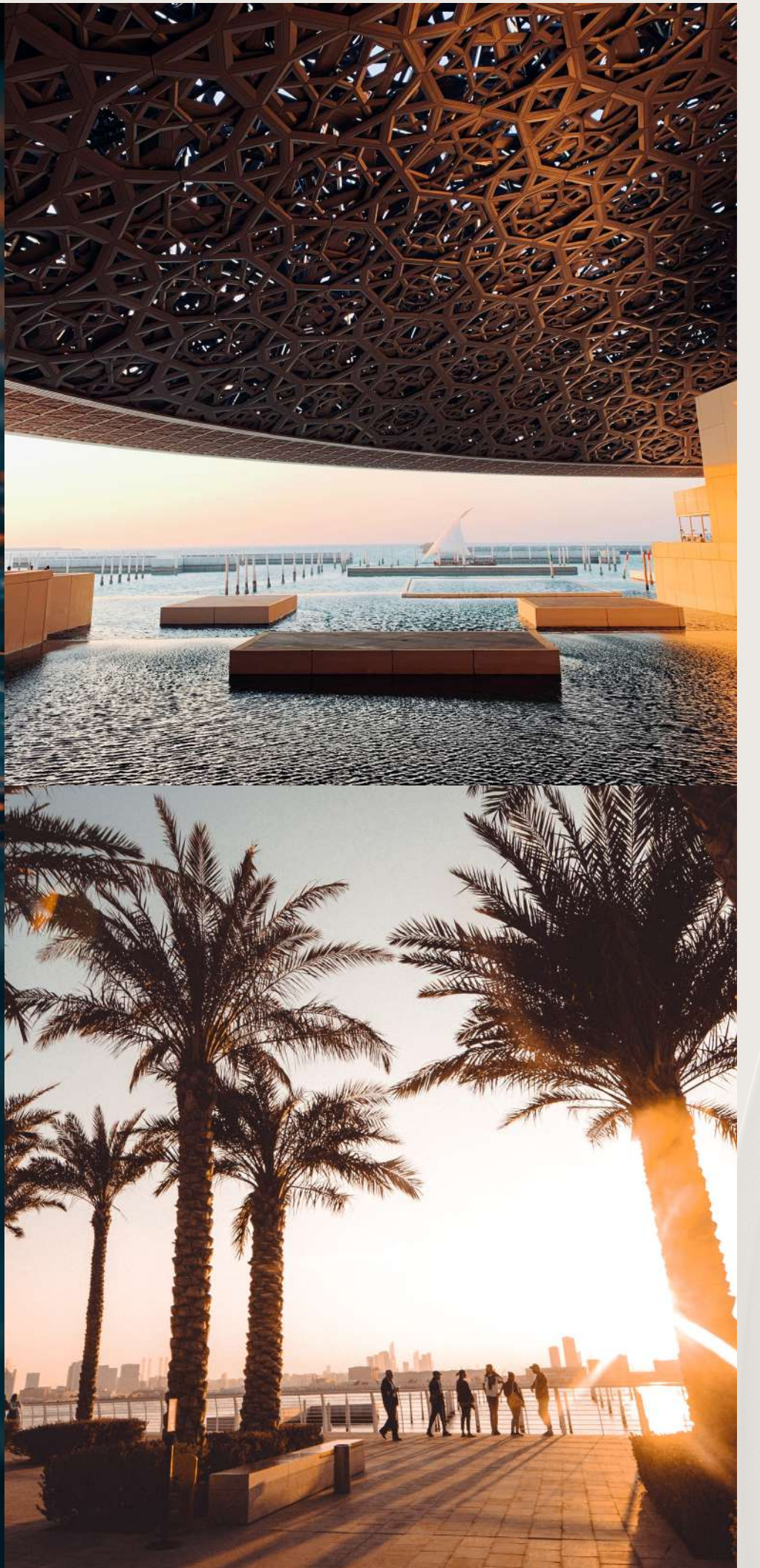
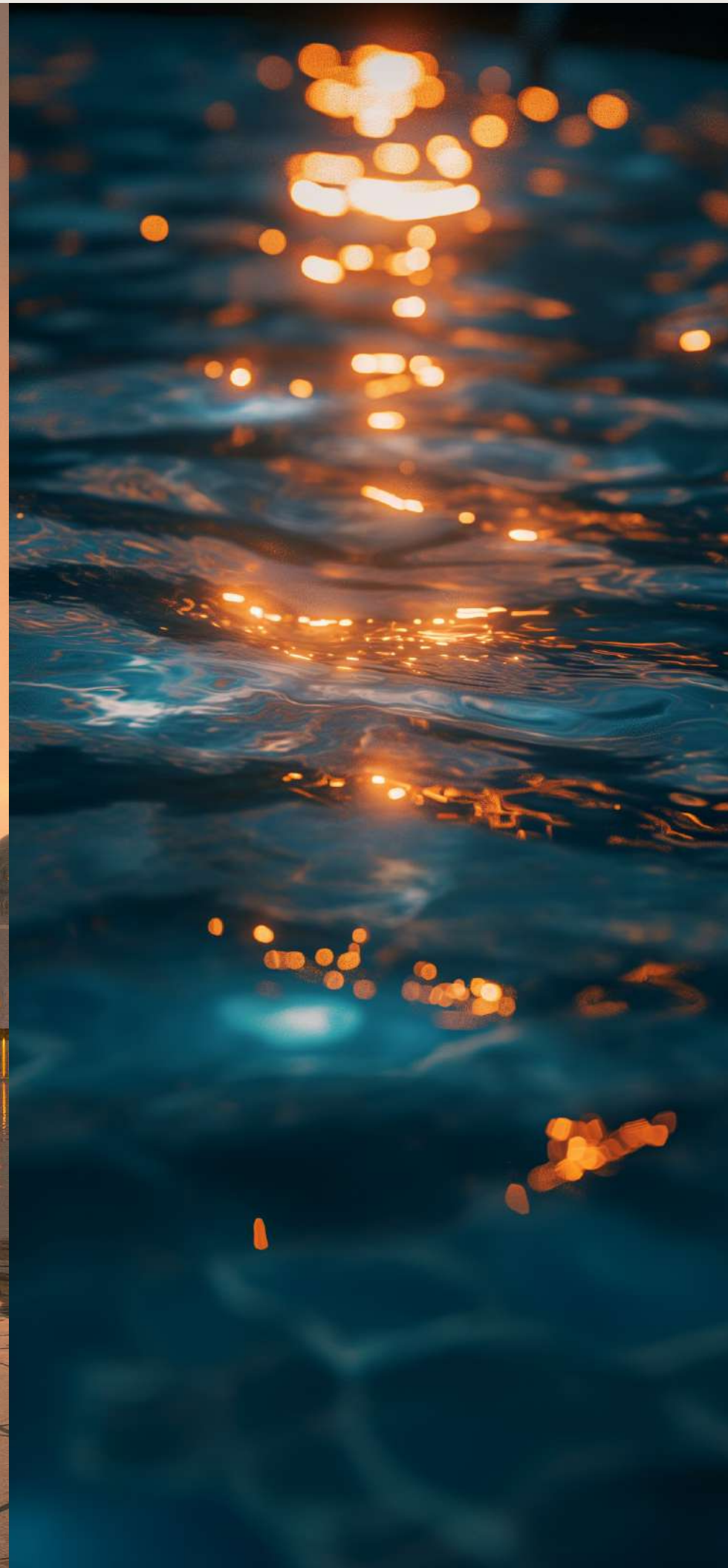
Enjoy the convenience of nearby educational and healthcare institutions like the *Sorbonne University Abu Dhabi*, and the state-of-the-art *Reem Hospital*. Explore over *400 branded boutiques and numerous dining options* at Reem Mall or relax in *Reem Central Park*, a generous green space ideal for family outings and sports activities.



# ELIE SAAB

WATERFRONT

BY OHANA



ELIE SAAB

WATERFRONT

BY OHANA

*The*  
**INTERIORS**

SOPHISTICATED FURNISHINGS OF  
BESPOKE BEAUTY



OHANA DEVELOPMENT



ELIE SAAB

WATERFRONT

BY OHANA

SIGNATURE MATERIALS

BEFITTING A  
*Royal abode*



The furnishing by ELIE SAAB reflect the *exceptional craftsmanship* and *attention to detail* of its signature in creating living spaces that are as comfortable and practical as they are enchanting and luxurious.

ELIE SAAB

WATERFRONT

BY OHANA



# ELIE SAAB

WATERFRONT

BY OHANA

## DISCERNING ELEGANCE

Exquisite interiors embrace the timeless elegance of ELIE SAAB's essence design, a testament to contemporary sophistication and refined ease. Crafting a life not just lived, but impeccably designed.

Experience a touch of luxury in everyday life with your choice of 1-3 bedroom layouts embodying *a perfect blend of functionality and design* in a semi-minimalist, cozy ambiance with *liberating open space and inspiring views*.



ELIE SAAB

WATERFRONT

BY OHANA



# ELIE SAAB

WATERFRONT

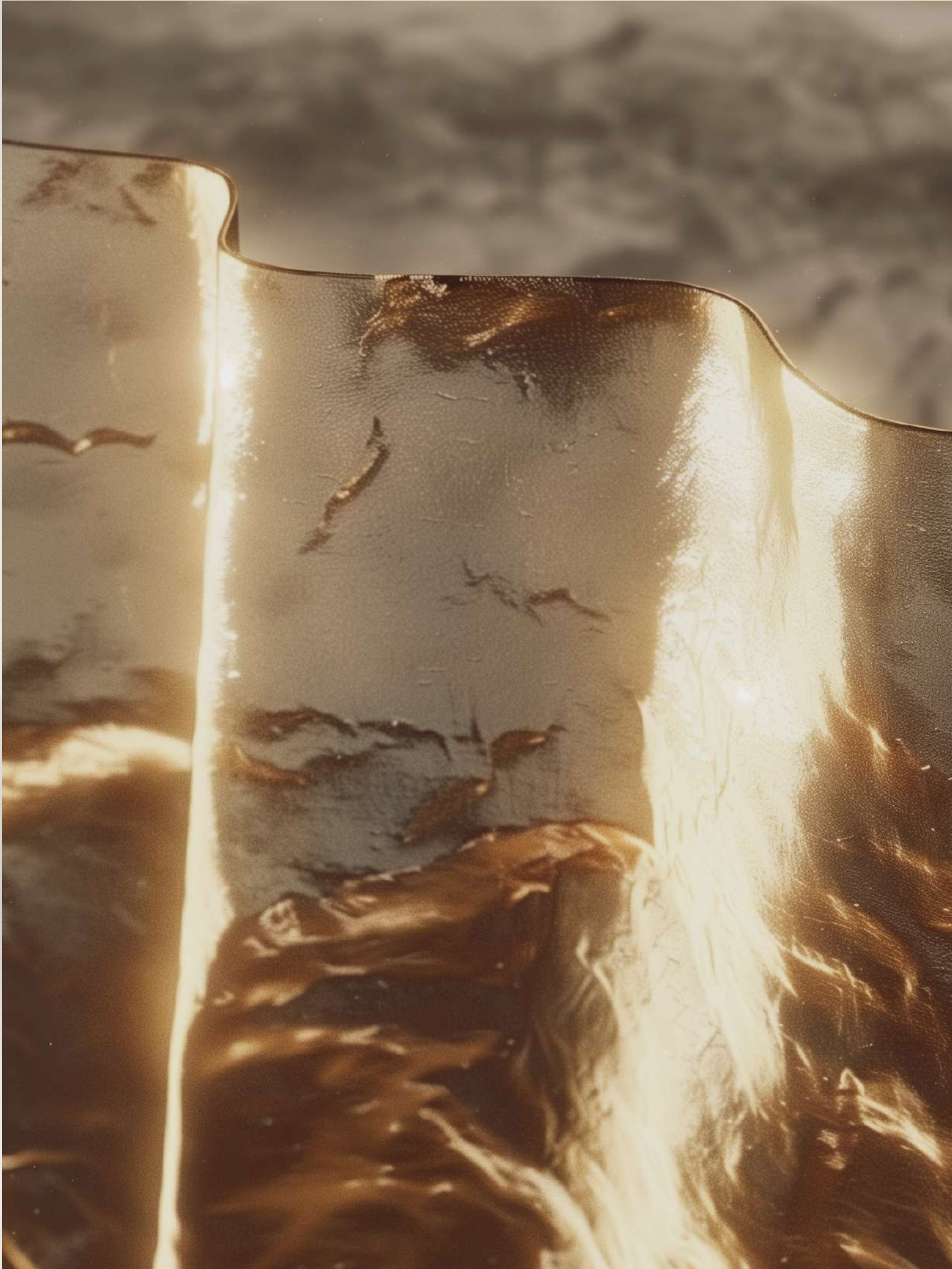
BY OHANA



ELIE SAAB

WATERFRONT

BY OHANA




# ELIE SAAB

WATERFRONT

BY OHANA





# ELIE SAAB

WATERFRONT

BY OHANA

SOPHISTICATION IN EVERY CORNER

ELIE SAAB's distinctive style blends craftsmanship with modern sensibilities in furnishing rooms that showcase style and livability.

Reside in plush luxury where clean lines, opulent fabrics, subtle metal accents and timeless motifs create serene spaces that exude sophistication and refinement. *An artful balance* creates a visually pleasing harmony of *elegance in simplicity*.



# ELIE SAAB

WATERFRONT

BY OHANA



# ELIE SAAB

WATERFRONT

BY OHANA

ARTISTIC NUANCES IN A SYMPHONY  
OF STYLE AND FUNCTION

Every aspect of space bathed in natural light whispers elegance, with a palette of soft neutrals and rich textures that mirror ELIE SAAB's renowned approach to beauty and sophistication.

The *dual level penthouse* echoes the aesthetics of ELIE SAAB. *Visionary vistas* combine breathtaking outdoor beauty with *indoor finesse*. Every moment is a picturesque experience of elegance and allure, where wakening is as glamorous as it is rejuvenating.



ELIE SAAB

WATERFRONT

BY OHANA



# ELIE SAAB

WATERFRONT

BY OHANA



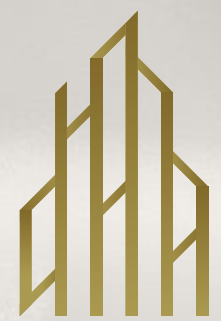
ELIE SAAB

WATERFRONT

BY OHANA

*Residential*  
**AMENITIES**

ENRICHING AN UNPARALLELED LIFESTYLE



OHANA DEVELOPMENT

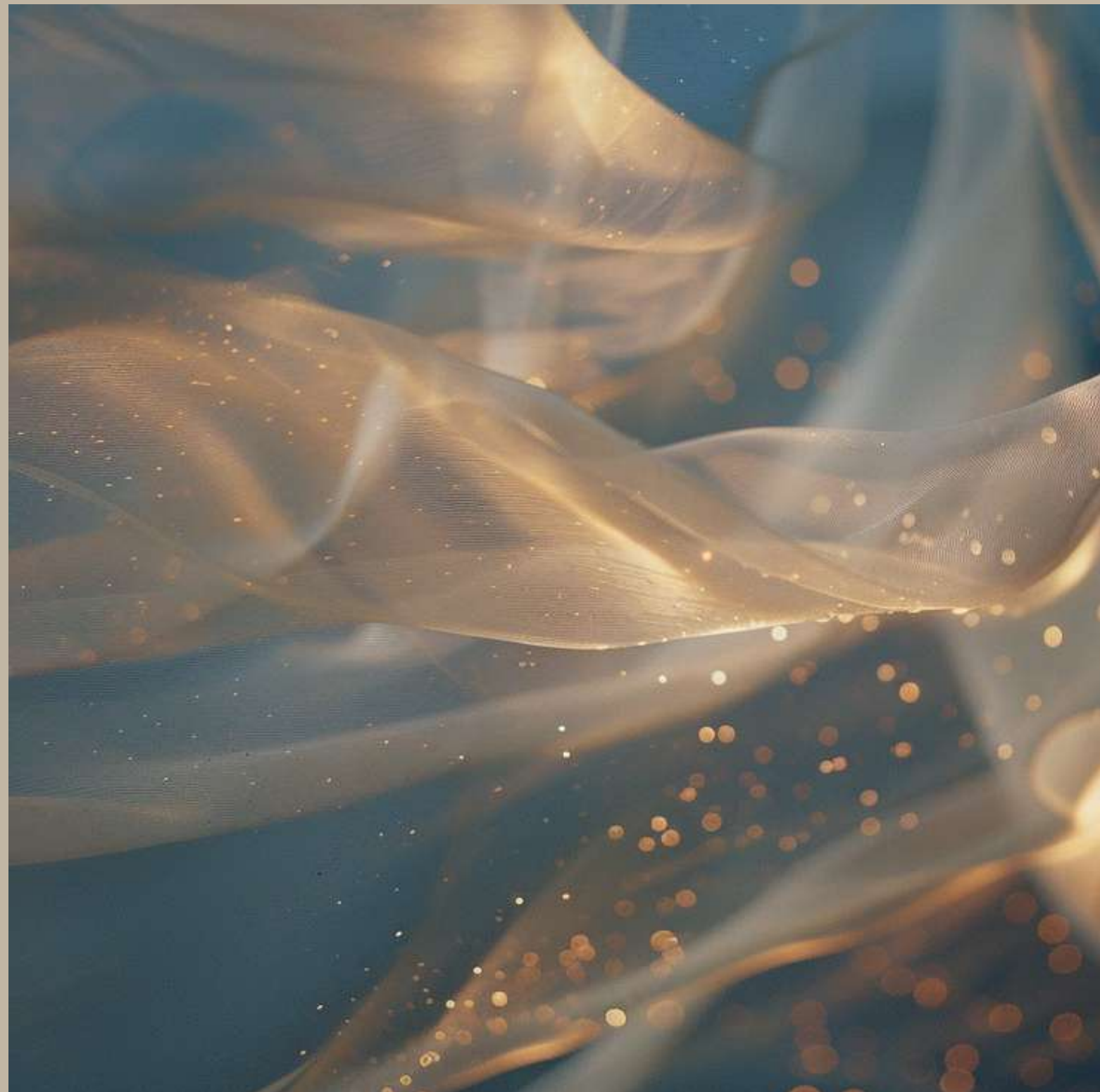
ELIE SAAB

WATERFRONT

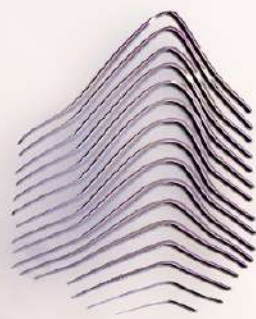
BY OHANA

THE LUXURY OF CONVENIENCE

INDULGE YOUR DESIRES  
*at Home*



ELIE SAAB Waterfront offers the finest things in life not only in your luxury home but also in the convenience and quality of amenities above the *entrance podium*.



ELIE SAAB  
WATER FRONT  
BY OHANA



# ELIE SAAB

WATERFRONT

BY OHANA

STYLE IN ALL YOUR NEEDS

The opulent touch of ELIE SAAB lifts your daily experience to a superior level. The grand reception feels like a gateway to another realm.

Open views, plush furnishings, and precious finishes evoke a sense of grandeur.

Soak up luxury in the *azure pool*, impeccably designed complete with a backdrop of dramatic views. Enjoy the serenity of the *landscaped gardens* and the convenience of *electric car charging* and *guest carparks*. Each element a testament to a life well lived.





ELIE SAAB

WATERFRONT

BY OHANA



# ELIE SAAB

WATERFRONT

BY OHANA

THE FLOW OF LIFE WITH A VIEW

Regenerate your day and be inspired by the waterfront view while working out in the state-of-the-art gym or ignite competition with friends on the padel court.

Tranquility flows in the *yoga/wellness space*, where serenity is captured in the stillness of the morning light, promising a sanctuary for the mind and body. It's here that the rush of the outside world fades into the background, allowing residents to rejuvenate and recharge.

# ELIE SAAB

WATERFRONT

BY OHANA



ELIE SAAB

WATERFRONT

BY OHANA

CELEBRATING COMMUNITY AND FAMILY

Amenities based on community and family values ensure life flourishes with vibrant energy and endless possibilities amidst artistic splendor.

Offering a transcendent blend of relaxation and activity. *Cherish family time* in the *playground* and in *communal areas* designed not just for passing through, but for lingering, sharing moments, and creating memories.





SEA & CITY VIEW

YACHT MARINA VIEW

SEA VIEW

46

#### PRIME LOCATION FEATURES

Experience unparalleled convenience and luxury at ELIE SAAB Waterfront.

**WALKING DISTANCE TO REEM MALL:**  
Enjoy the convenience of a short walk to a world-class shopping experience.

**5 MINUTE DRIVE TO THE GALLERIA MALL:**  
Quick access to high-end luxury shopping and dining.

**OVERLOOKING THE MARINA AND THE CANAL:** Breathtaking unobstructed views of the marina and canal, right from your window.

**PROXIMITY TO PROMINENT SCHOOLS:**  
A short drive to Nord Anglia International School, Gems World Academy, and Repton Senior School.

**DIRECT ACCESS TO HAZZA BIN ZAYED THE FIRST STREET BRIDGE:**  
Seamless connectivity to Abu Dhabi city center.

**NEARBY TOP-RATED HOSPITALS:**  
Cleveland Clinic Abu Dhabi, Reem Hospital, Mediclinic, and Burjeel Hospital within easy reach.

**5 MINUTE DRIVE TO SORBONNE UNIVERSITY:**  
Proximity to prominent universities.

# ELIE SAAB

WATERFRONT

BY OHANA

## layout PARKING

KEYPLAN



PARKING



ELIE SAAB  
WATERFRONT  
BY OHANA

*layout*  
PODIUM

KEYPLAN

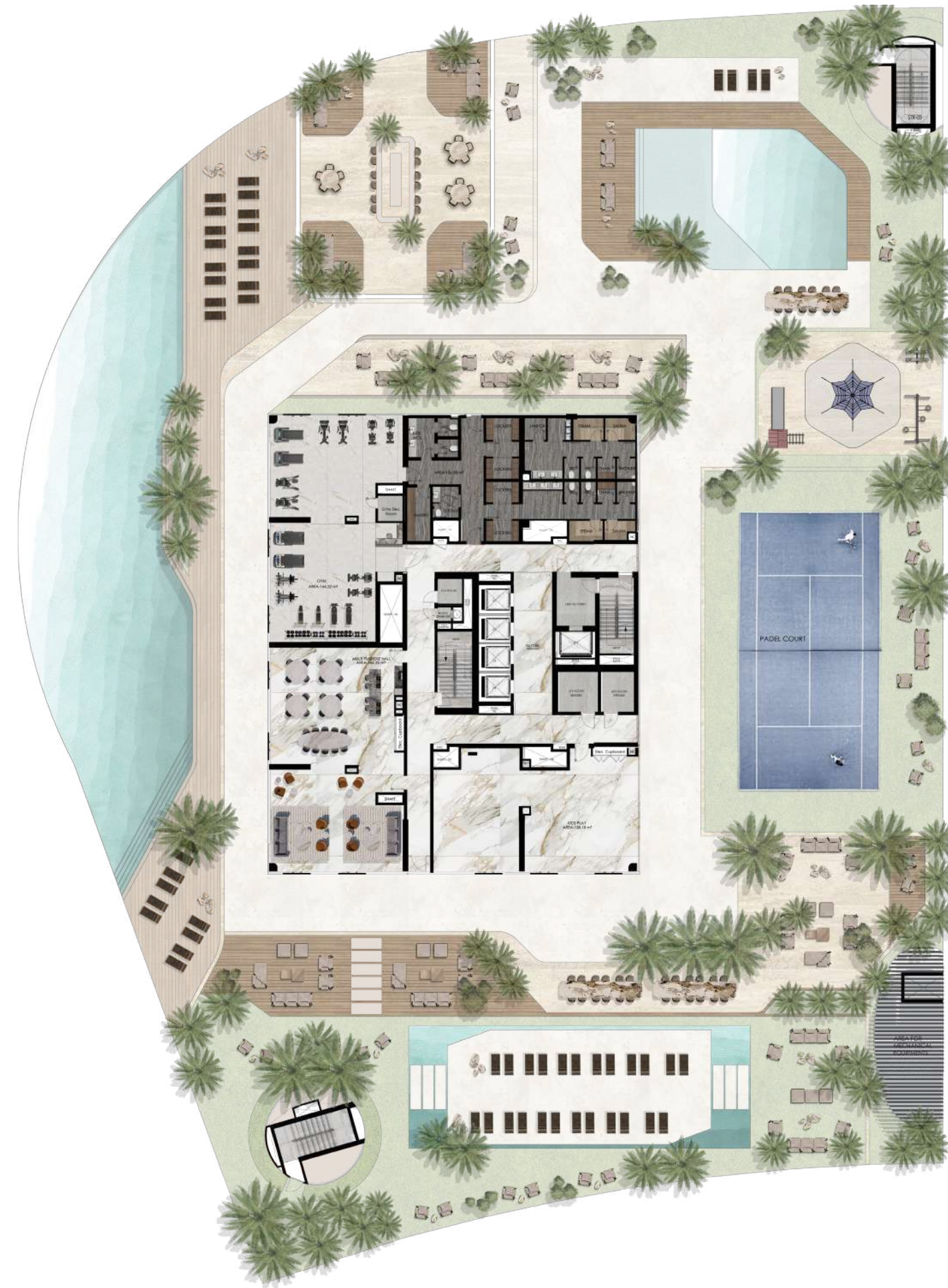


PODIUM



  
SEA VIEW

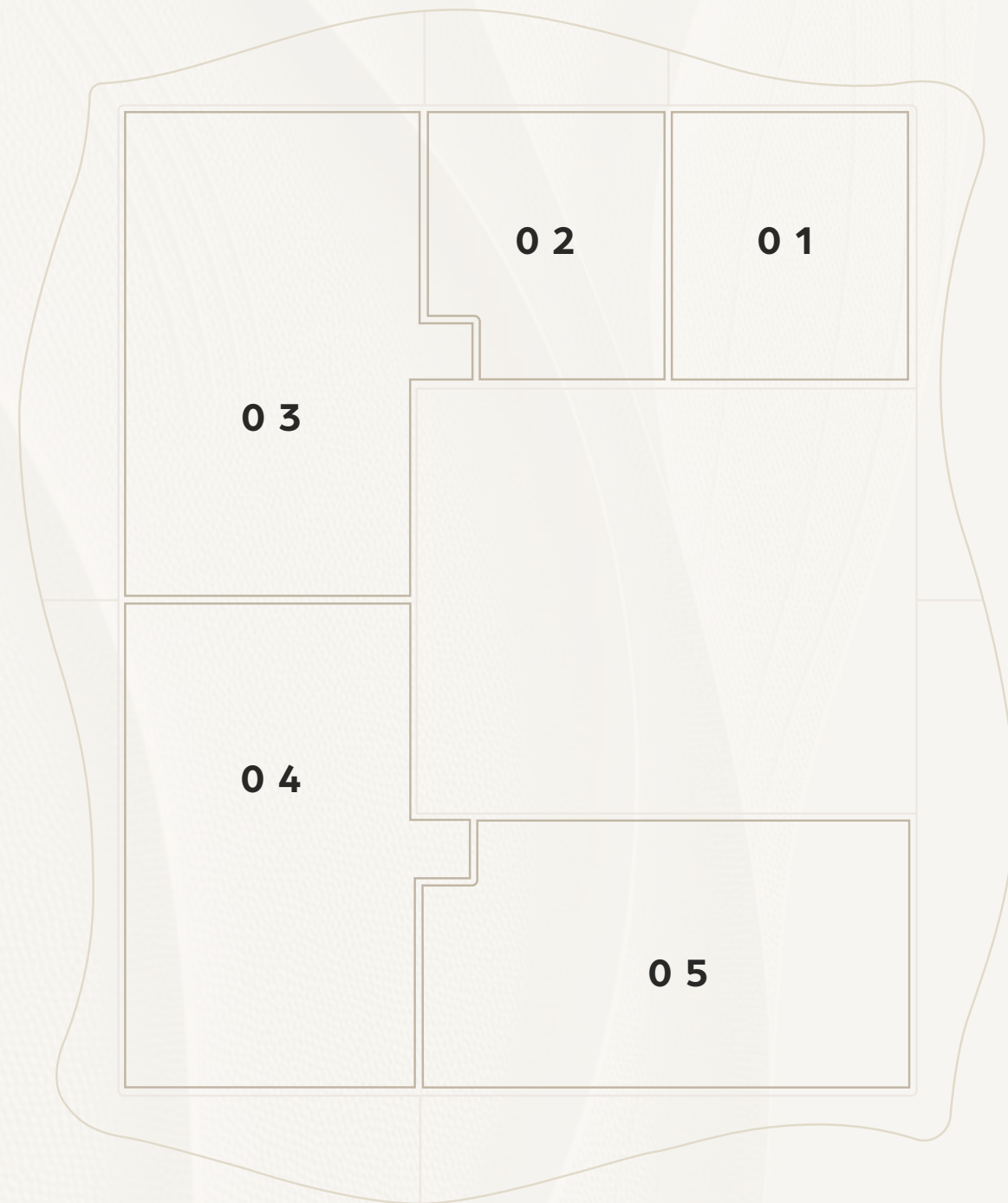
  
CITY/SEA VIEW



  
YACHTS MARINA VIEW



ELIE SAAB  
WATERFRONT  
BY OHANA



CITY/SEA VIEW



SEA VIEW



YACHTS MARINA VIEW

# ELIE SAAB

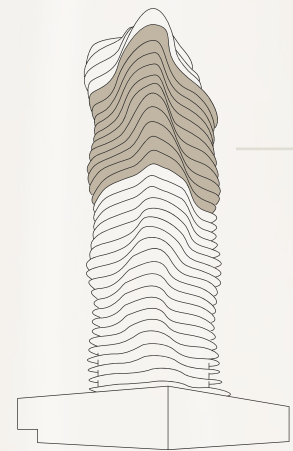
WATERFRONT

BY OHANA

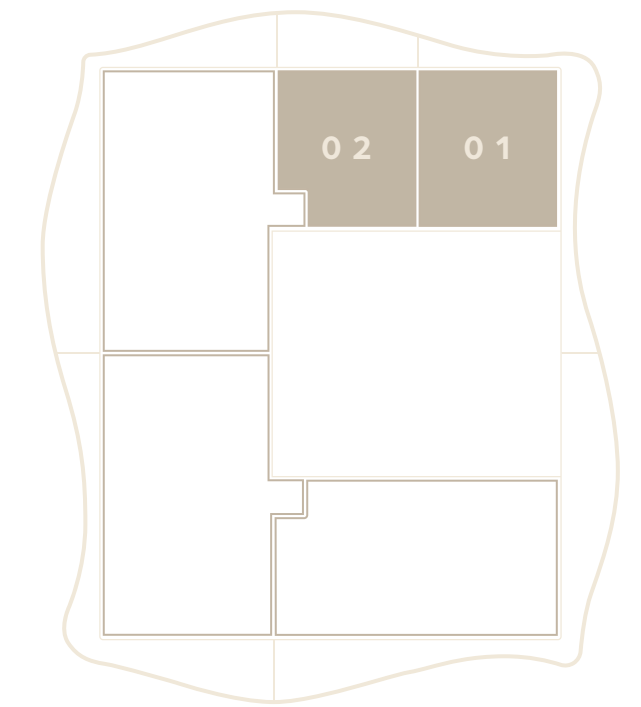
## apartment 1BEDROOM TYPE A

	SQM
NET AREA	66.83
BALCONIES	23.2
TOTAL AREA	90.03

### KEYPLAN



### MASTERPLAN



# ELIE SAAB

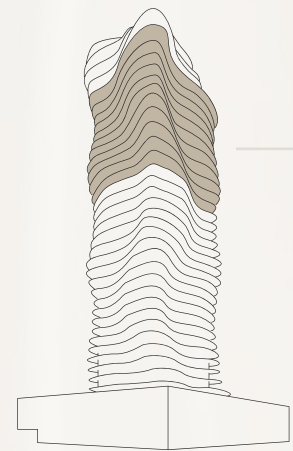
WATERFRONT

BY OHANA

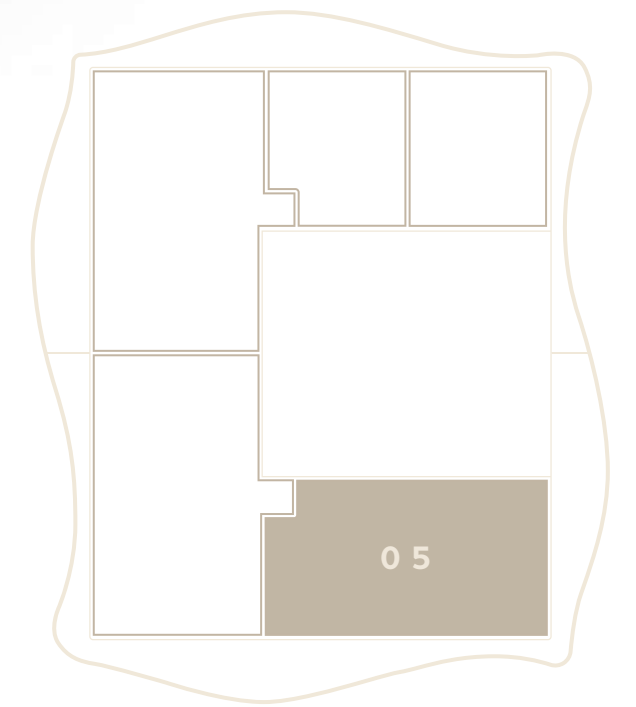
## apartment 2BEDROOMS TYPE B

	SQM
NET AREA	135.16
BALCONIES	47.3
TOTAL AREA	182.46

KEYPLAN



MASTERPLAN



# ELIE SAAB

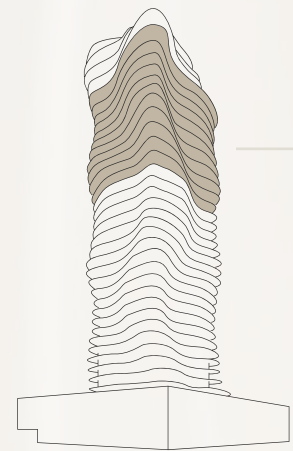
WATERFRONT

BY OHANA

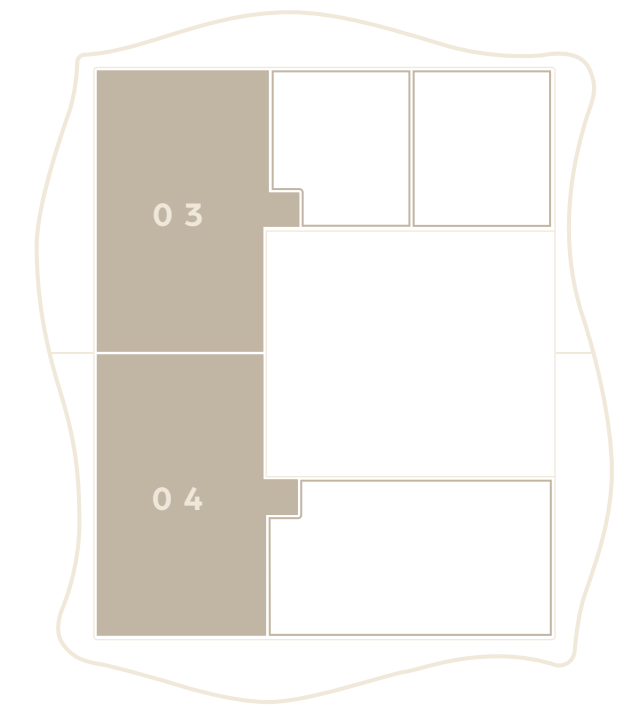
## apartment 3BEDROOMS

	SQM
NET AREA	156.55
BALCONIES	64.2
TOTAL AREA	220.75

### KEYPLAN



### MASTERPLAN

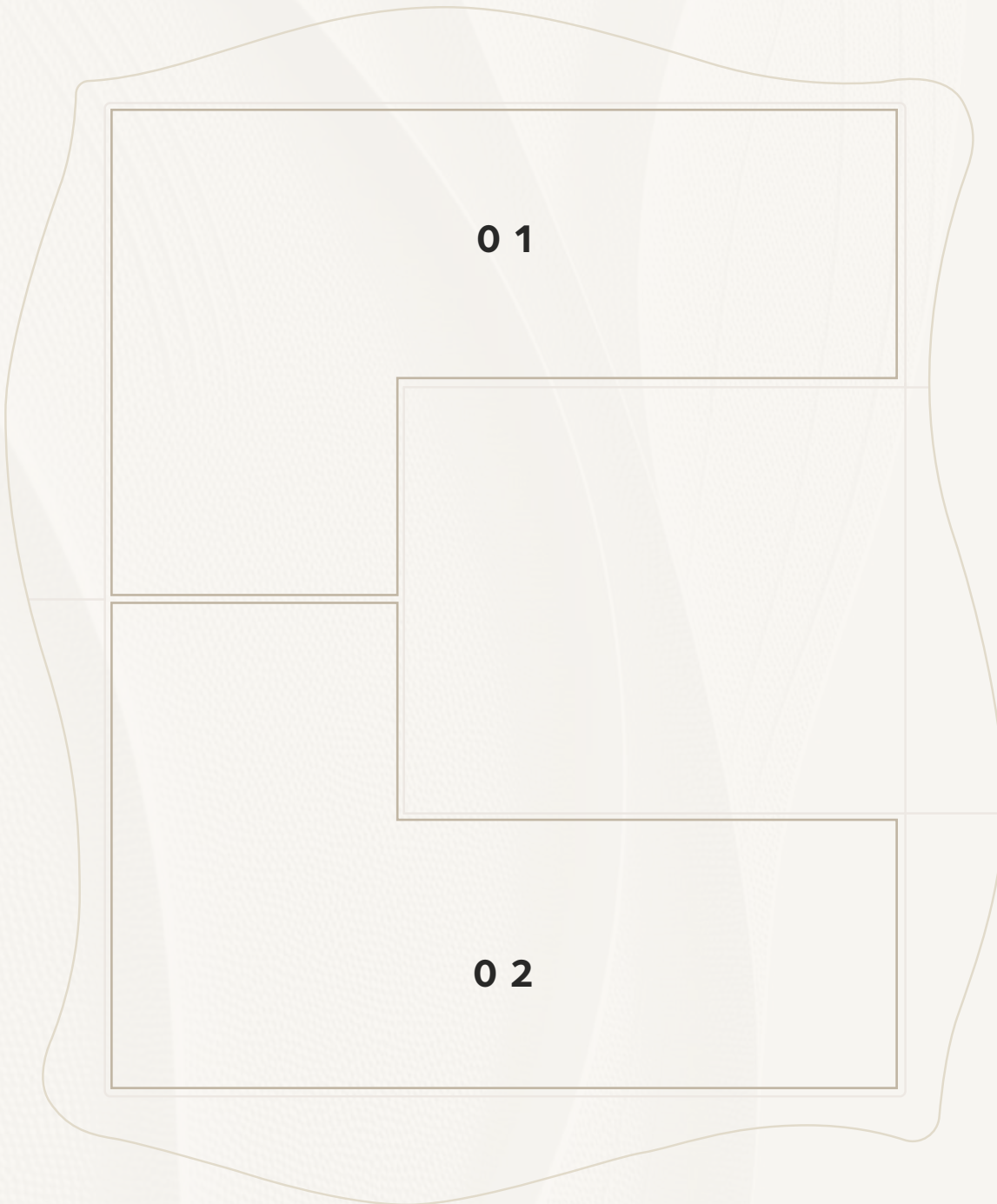


ELIE SAAB

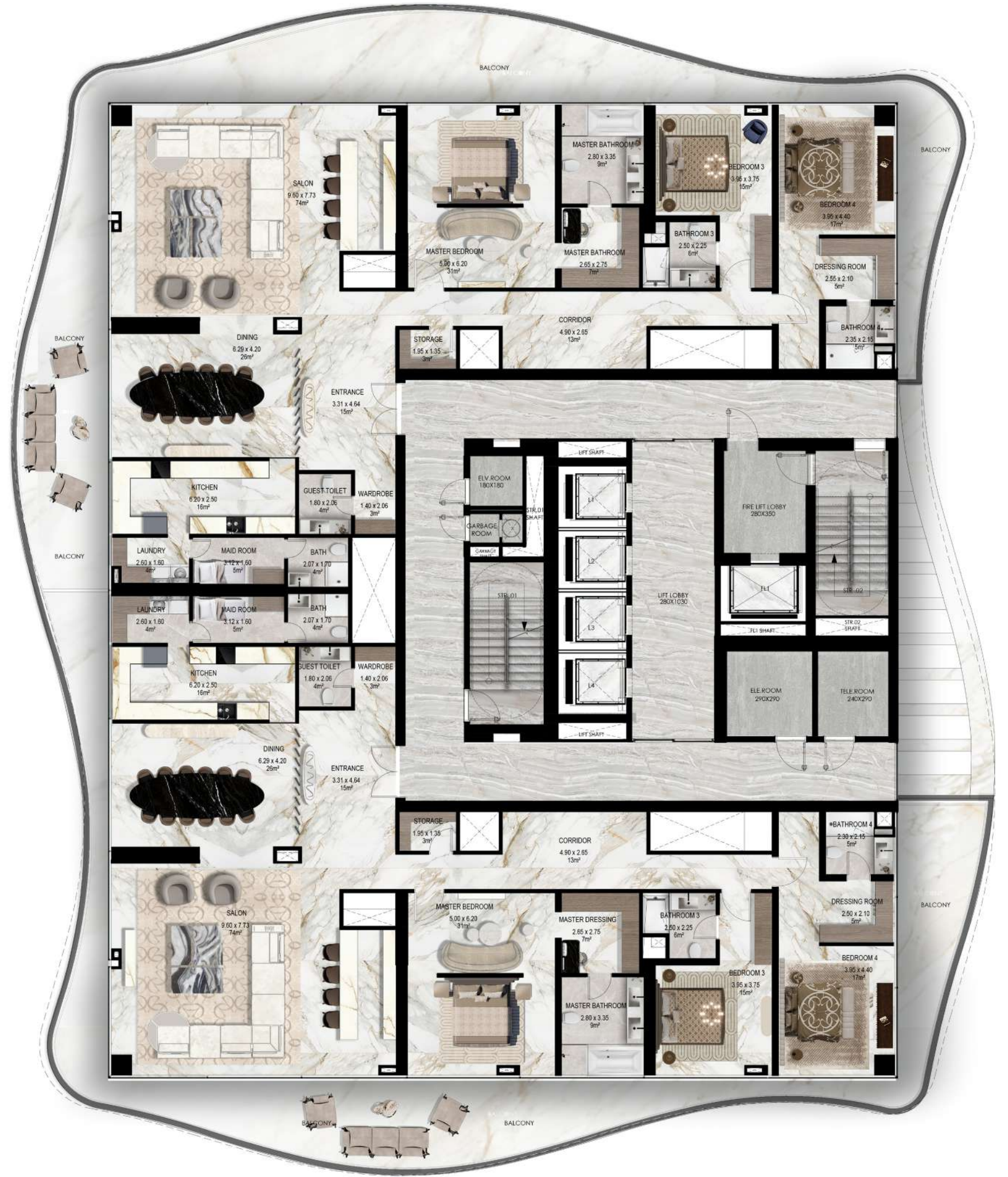
WATERFRONT

BY OHANA

28<sup>TH</sup> AND 29<sup>TH</sup> FLOOR



CITY/SEA VIEW



SEA VIEW



YACHTS MARINA VIEW

# ELIE SAAB

WATERFRONT

BY OHANA

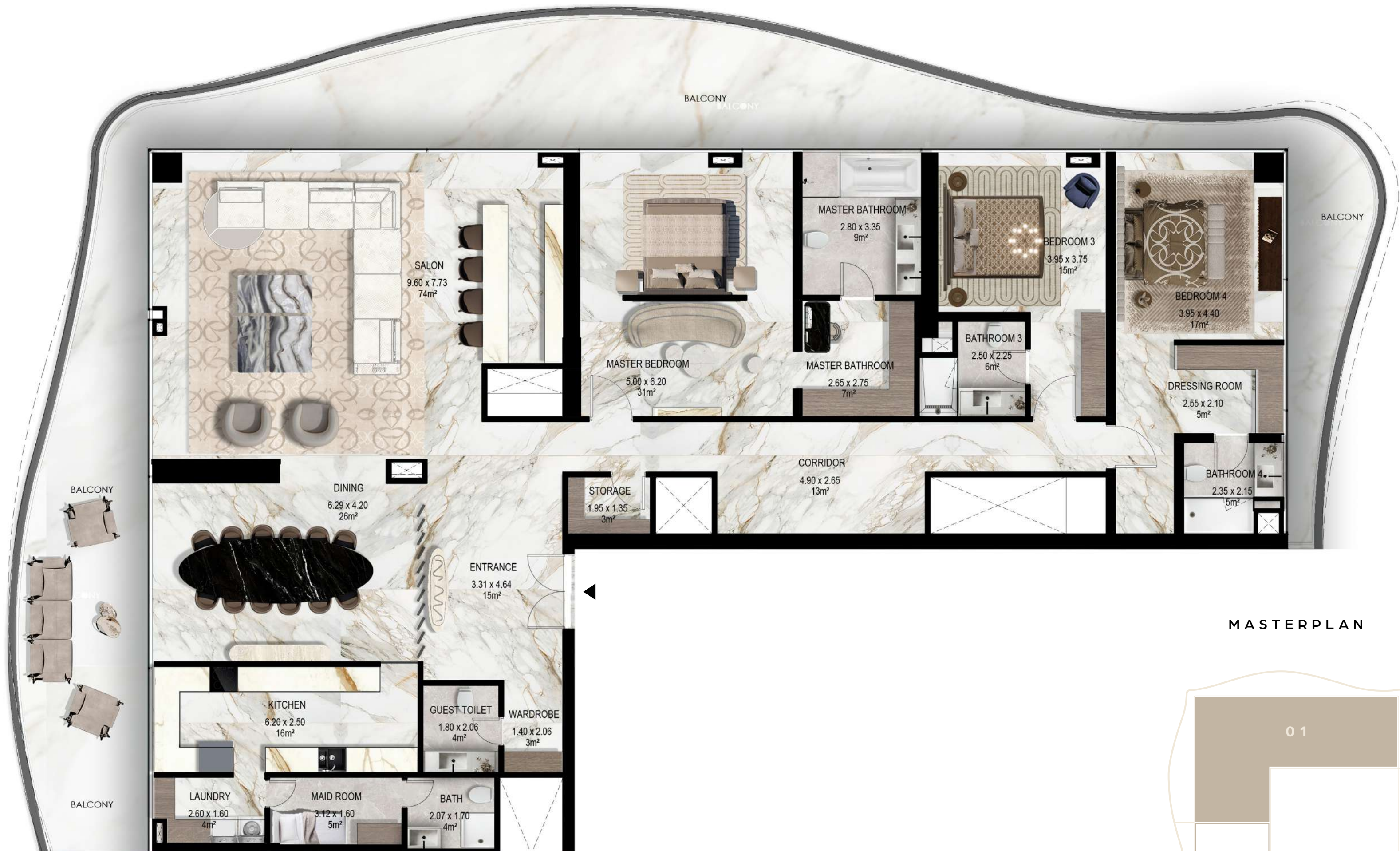
## ELIE SAAB APARTMENT

28<sup>TH</sup> AND 29<sup>TH</sup> FLOOR

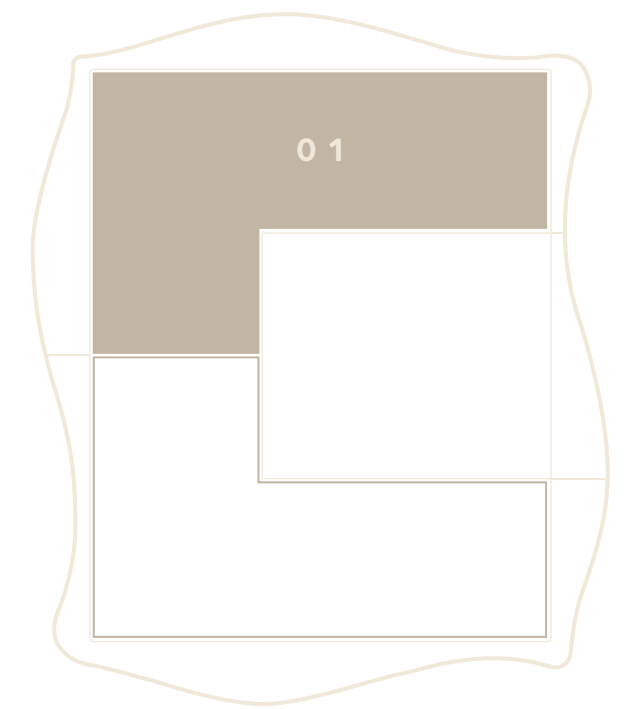
	SQM	
	28 <sup>TH</sup>	29 <sup>TH</sup>
NET AREA	294	294
BALCONIES	106	101
TOTAL AREA	400	395

### KEYPLAN

28<sup>TH</sup> AND 29<sup>TH</sup> FLOOR



### MASTERPLAN



This layout does not constitute a cadastral plan and has no contractual validity. The measurements, type, and arrangement of furnishings are purely indicative and representative of the spaces, subject to subsequent changes/ variations pursuant to law and contract.

# ELIE SAAB

WATERFRONT

BY OHANA

## ELIE SAAB APARTMENT

28<sup>TH</sup> AND 29<sup>TH</sup> FLOOR

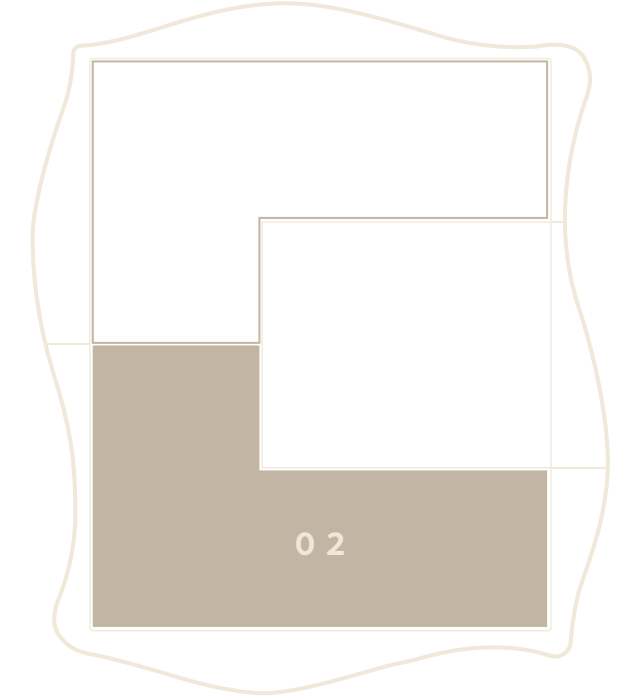
	SQM	
	28 <sup>TH</sup>	29 <sup>TH</sup>
NET AREA	294	294
BALCONIES	118	112
TOTAL AREA	412	406

### KEYPLAN

28<sup>TH</sup> AND 29<sup>TH</sup> FLOOR



### MASTERPLAN



This layout does not constitute a cadastral plan and has no contractual validity. The measurements, type, and arrangement of furnishings are purely indicative and representative of the spaces, subject to subsequent changes/ variations pursuant to law and contract.

**ELIE SAAB**  
WATERFRONT  
BY OHANA

**ELIE SAAB**  
**APARTMENT**  
30<sup>TH</sup> AND 31<sup>TH</sup> FLOOR

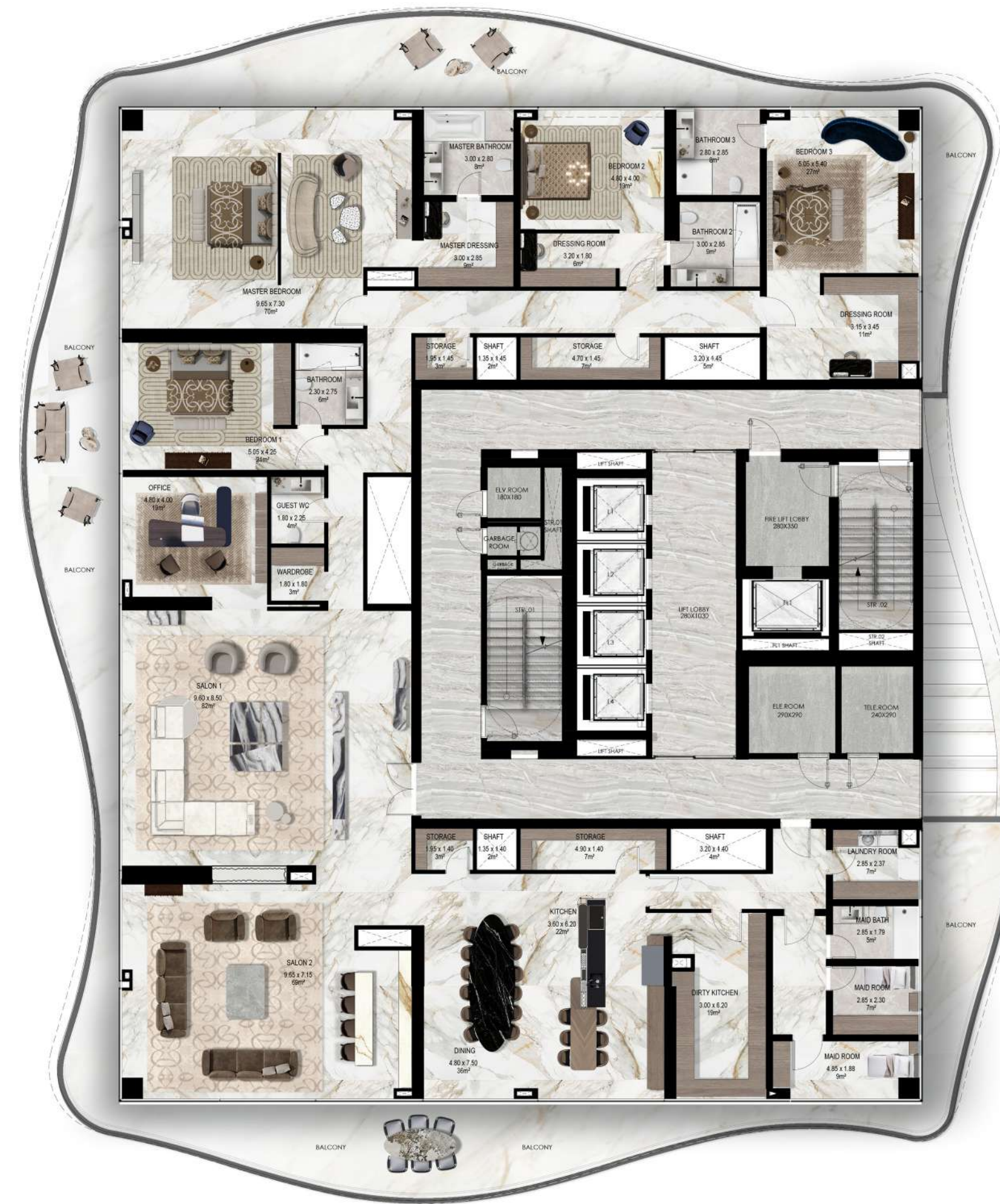
	SQM	
	30 <sup>TH</sup>	31 <sup>ST</sup>
NET AREA	595	595
BALCONIES	210	215
TOTAL AREA	805	810

**KEYPLAN**

30<sup>TH</sup> AND  
31<sup>ST</sup> FLOOR



CITY/SEA VIEW



YACHTS MARINA VIEW



SEA VIEW



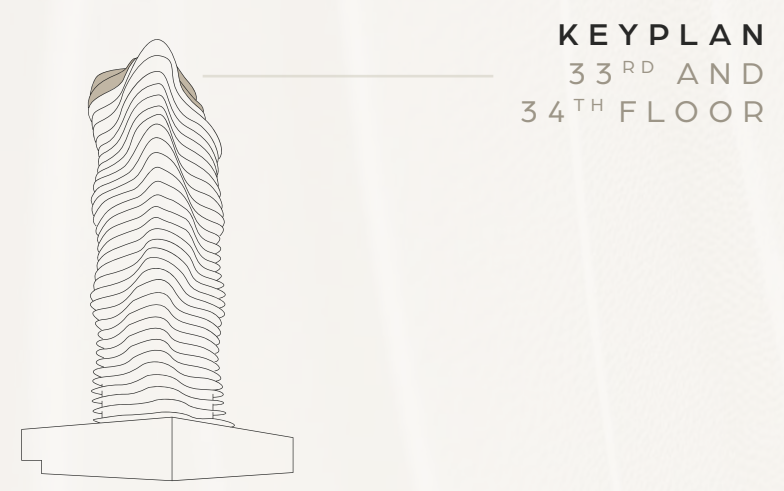
This layout does not constitute a cadastral plan and has no contractual validity. The measurements, type, and arrangement of furnishings are purely indicative and representative of the spaces, subject to subsequent changes/ variations pursuant to law and contract.



**ELIE SAAB**  
**WATERFRONT**  
 BY OHANA

*layout*  
**PENTHOUSE**  
 33<sup>RD</sup> AND 34<sup>TH</sup> FLOOR

	SQM
NET AREA	624
BALCONIES	798
TOTAL AREA	1422



This layout does not constitute a cadastral plan and has no contractual validity. The measurements, type, and arrangement of furnishings are purely indicative and representative of the spaces, subject to subsequent changes/ variations pursuant to law and contract.

**ELIE SAAB**  
 WATERFRONT  
 BY OHANA

*layout*  
**PENTHOUSE**  
 33<sup>RD</sup> AND 34<sup>TH</sup> FLOOR

	SQM
NET AREA	352
BALCONIES	567
TOTAL AREA	919



CITY/SEA VIEW



SEA VIEW



YACHTS MARINA VIEW

This layout does not constitute a cadastral plan and has no contractual validity. The measurements, type, and arrangement of furnishings are purely indicative and representative of the spaces, subject to subsequent changes/ variations pursuant to law and contract.

**ELIE SAAB**  
**WATERFRONT**  
 BY OHANA

*layout*  
**PENTHOUSE**  
 33<sup>RD</sup> AND 34<sup>TH</sup> FLOOR

	SQM
NET AREA	272
BALCONIES	231
TOTAL AREA	503



CITY/SEA VIEW



SEA VIEW



YACHTS MARINA VIEW



This layout does not constitute a cadastral plan and has no contractual validity. The measurements, type, and arrangement of furnishings are purely indicative and representative of the spaces, subject to subsequent changes/variations pursuant to law and contract.



A BEACON OF INNOVATION  
& DESIGN EXCELLENCE

*in Abu Dhabi's skyline*



**ELIE SAAB**

WATERFRONT

BY OHANA