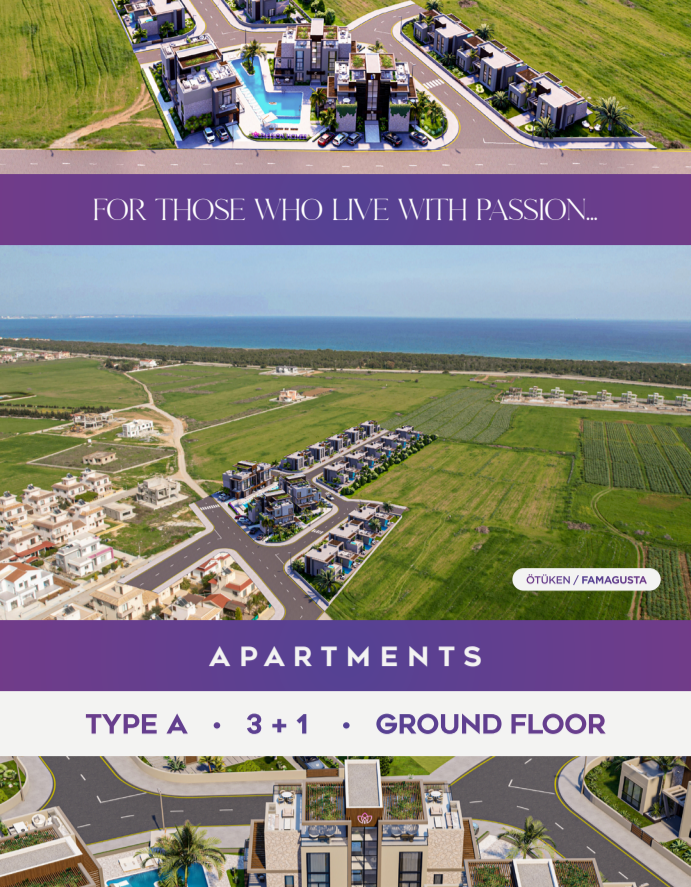




PASSION HOMES



FOR THOSE WHO LIVE WITH PASSION...



ÖTÜKEN / FAMAĞUSTA

APARTMENTS

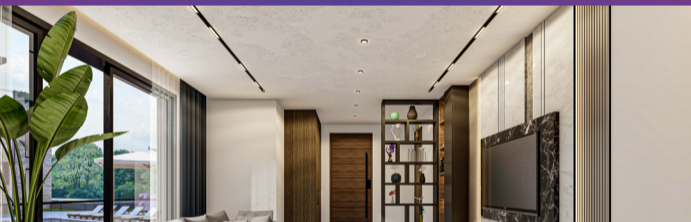
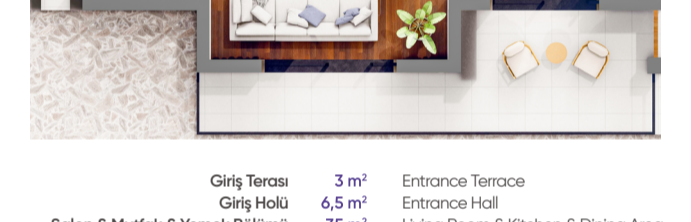
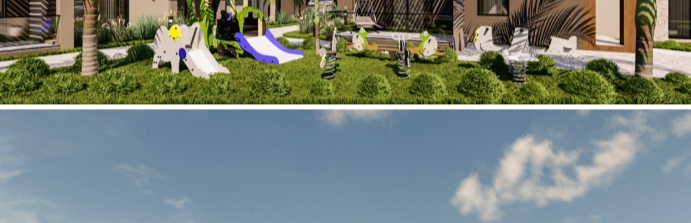
TYPE A • 3 + 1 • GROUND FLOOR



Özellikler Specifications

- | | |
|--|---|
| 3 Yatak Odası | • 3 Bedrooms |
| 12 Daireden Oluşan Site İçerisinde | • In the Site Consisting of 12 Apartments |
| Ortak Kullanım Havuz | • Common Pool |
| Müstakil, Zemin Kat Daire | • Detached, Ground Floor Apartment |
| Kişisel Giriş | • Private Entrance |
| Özel Araç Park Alanı | • Private Parking Area |
| Girişte Vestiyer Dolabı | • Closet Locker at the Entrance |
| Tüm Yatak Odalarında Aynalı Duvar Dolapları | • Fitted Wardrobes with Mirror in all Bedrooms |
| Misafir Tuvaleti | • Guest Toilet |
| Geniş Teras | • Large Terrace |
| Isı İzolasyonlu Çift Cam Alüminyum | • Heat-Insulated Double-Glazed Aluminium |
| Lüks Asma Tavan ve Dekoratif Sistemler | • Luxury Decorative and Ceiling Systems |
| Yüksek Kalitede Seramik ve Parkeler | • High Quality Ceramic and Parquet Flooring |
| Yüksek Kalitede Aydınlatma Ürünleri | • High Quality Lighting Products |
| Yüksek Kalitede Ahşap Doğrama ve Tezgah Ürünleri | • High Quality Wood Works and Work-top Products |
| Hidrofor Sistemi | • Water Pump System |
| Klima Altyapısı | • Air Conditioning Infrastructure |
| Opsiyonel Zeminde Isıtma Sistemleri | • Optional Floor Heating Systems |
| Opsiyonel Dekorasyon Paketi | • Optional Decoration Package |

EXTERIOR



Giriş Terası	3 m ²	Entrance Terrace
Giriş Holü	6,5 m ²	Entrance Hall
Salon & Mutfak & Yemek Bölümü	35 m ²	Living Room & Kitchen & Dining Area
Misafir Tuvaleti	3,5 m ²	Guest Toilet
Koridor	4,5 m ²	Hallway
Banyo-WC	6,5 m ²	Bathroom-WC
Yatak Odası-1	14 m ²	Bedroom-1
Yatak Odası-2	15 m ²	Bedroom-2
Yatak Odası-3	13 m ²	Bedroom-3
Teras	15 m ²	Terrace

INTERIOR



HALKEN

İNŞAAT

0392 444 48 48