



VIOLET TOWER

فيوليت تاور

DUBAI INVESTMENT S

Dubai Investments is a leading investment company in the UAE with over 27 years of experience.

DI's real estate subsidiaries have a strong track record of developing top-notch projects in the region.



1995
ESTABLISHED

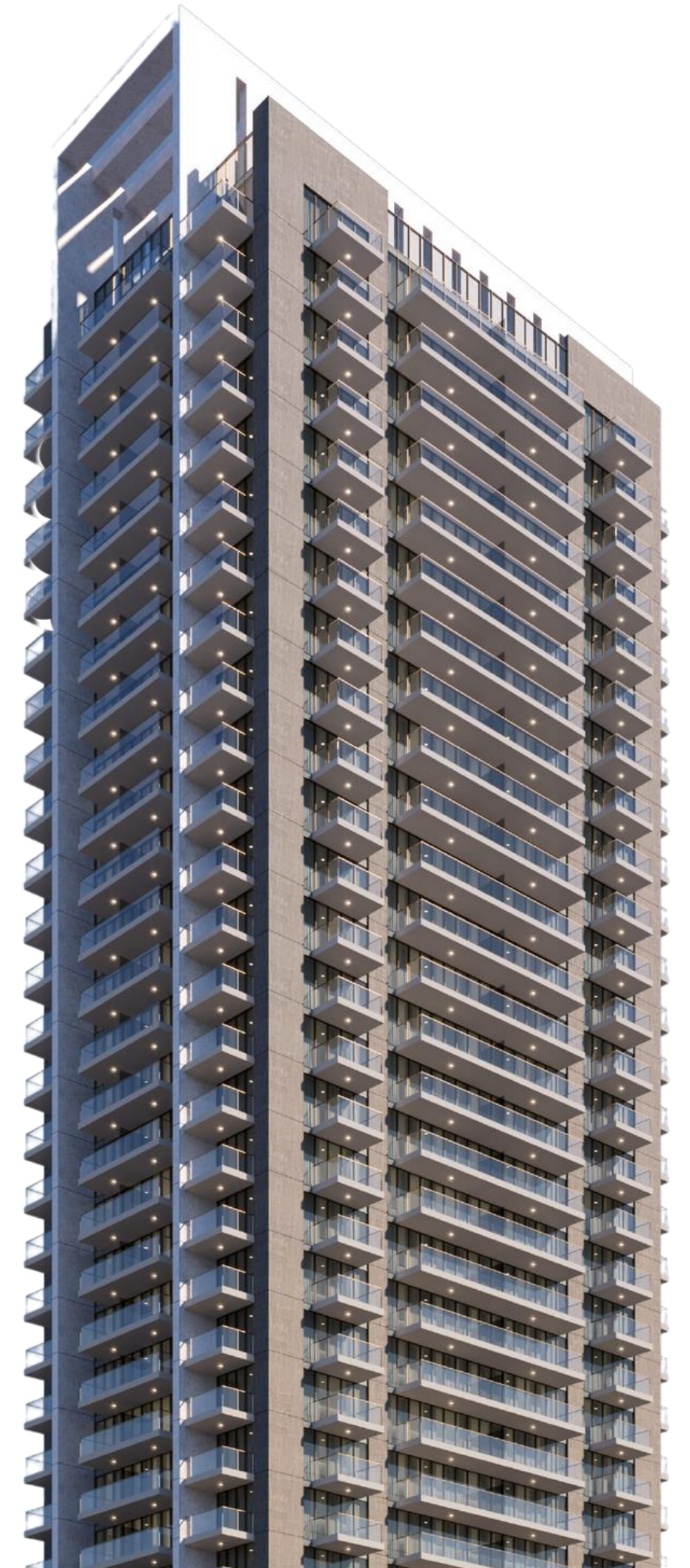
20.9
ASSET
BILLIONS
AED)

15,000 +
SHAREHOLDE
RS

3,500 +
EMPLOYEE
S

The PROJECT

Violet Tower is a residential tower located in the heart of Jumeirah Village Circle (JVC). With 27 residential floors and a variety of high-quality amenities, Violet Tower epitomizes the marriage of elegance and practical living.



LOCATION

Violet Tower's convenient location at the heart of JVC puts it just a few minutes away from key amenities and landmarks in the city. Residents have easy access to a number of Dubai's main connecting highways and streets.



7 minutes

Dubai Hills Mall



10 minutes

Mall of the Emirates



10 minutes

Dubai Marina



20 minutes

Jumeirah Beach



15 minutes

Downtown Dubai



15 minutes

Burj Al Arab



20 minutes

Palm Jumeirah



20 minutes

Museum of the Future



30 minutes

Dubai International Airport



30 minutes

Dubai World Trade Center



UNITS SPECIFICATIONS



STUDIO



ONE-BEDROOM



TWO-BEDROOM

Unit	Quantity (units)	Avg. Size (sqft)
Studio Apartment	84	427.60
1-Bedroom Apartment	163	859.04
2-Bedroom Apartment	40	1,303.10
Total Number of Units	287	=
Gymnasium	--	--
Swimming Pool	--	--
Kids Playing Area	--	-
Total Number of Floors	G+4P+27	-

ARCHITECTURAL DESIGNS

Violet Tower stands out with its modern architecture, sleek design and fine finishing.

Exterior

The exterior features expansive windows, providing abundant natural light and panoramic views of the vibrant surroundings.

Outdoor Spaces

Balconies and communal areas contribute to the aesthetic appeal, offering residents a harmonious blend of urban living and natural beauty.

Interiors

The stylish streak flows seamlessly into the building's interior, with space unique and welcoming in its own right

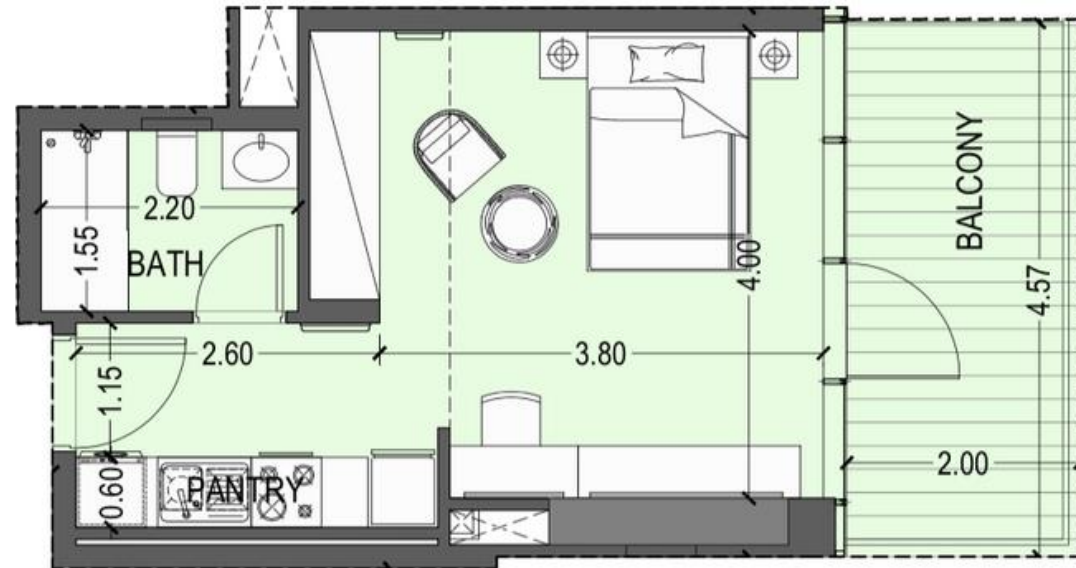
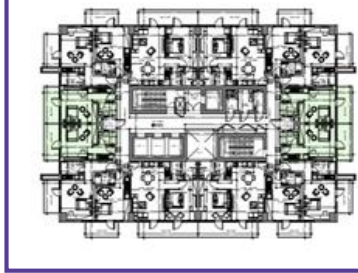


FLOOR PLANS

STUDIOS

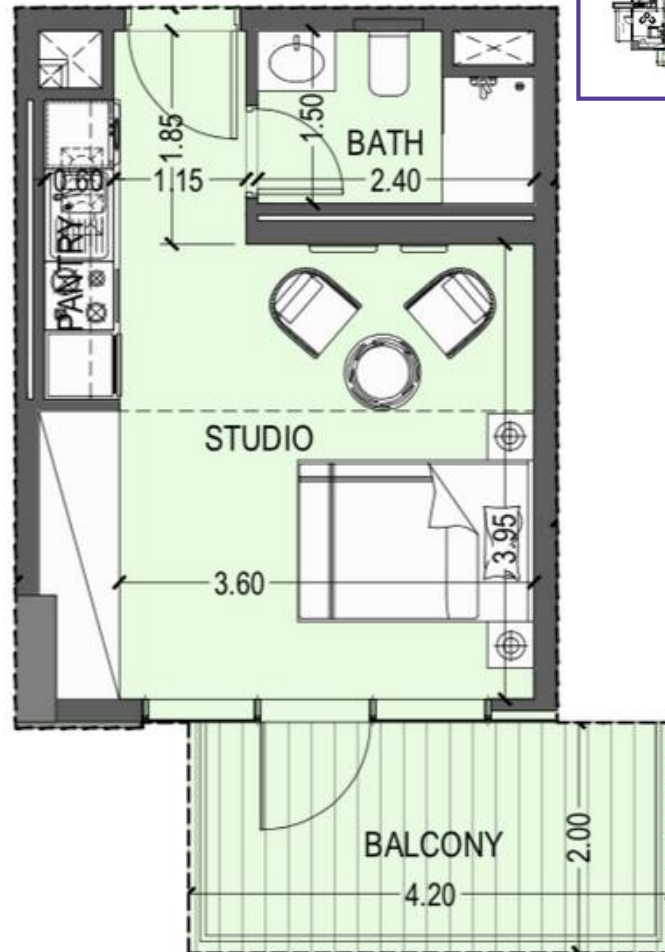
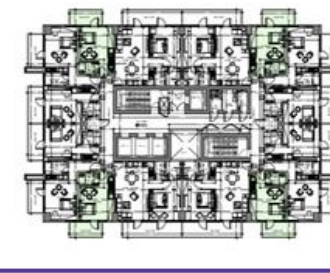
TYPE A

2nd to 8th floor | 28 flats



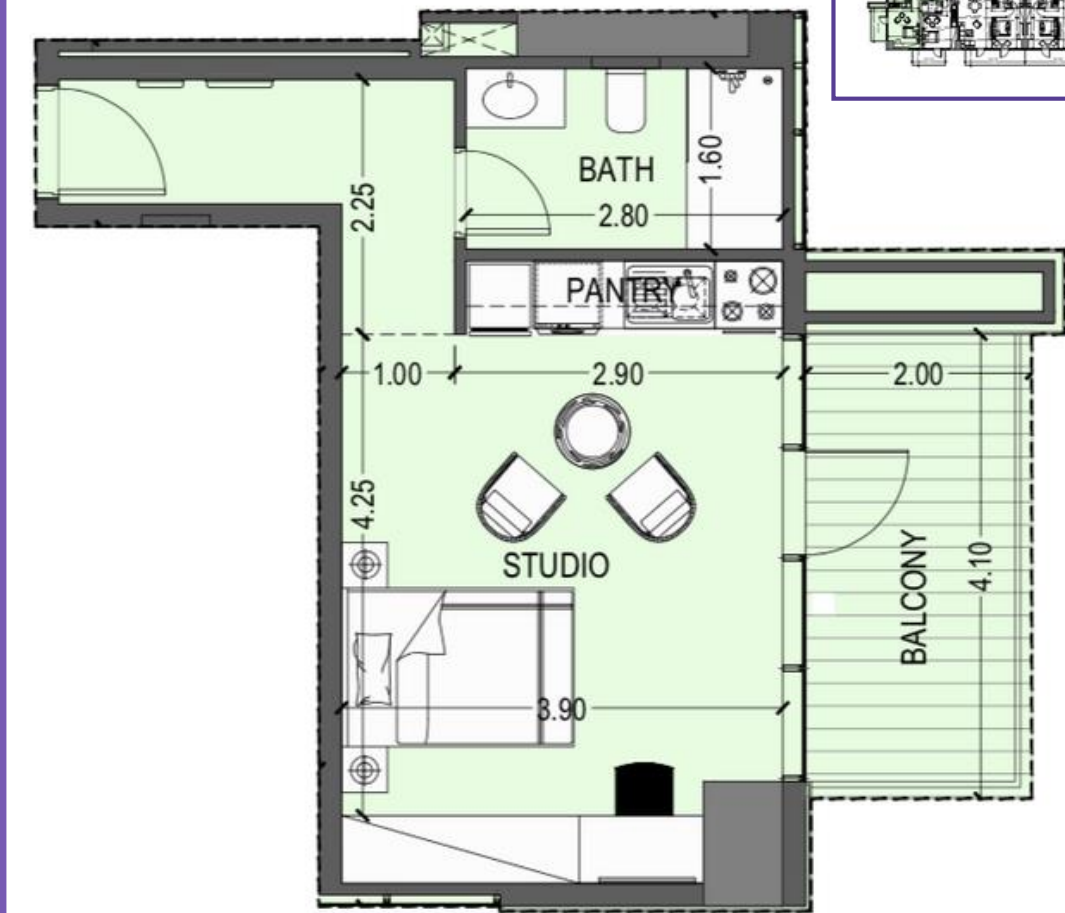
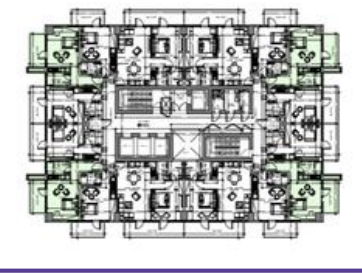
TYPE B

2nd to 8th floor | 28 flats



TYPE C

2nd to 8th floor | 28 flats

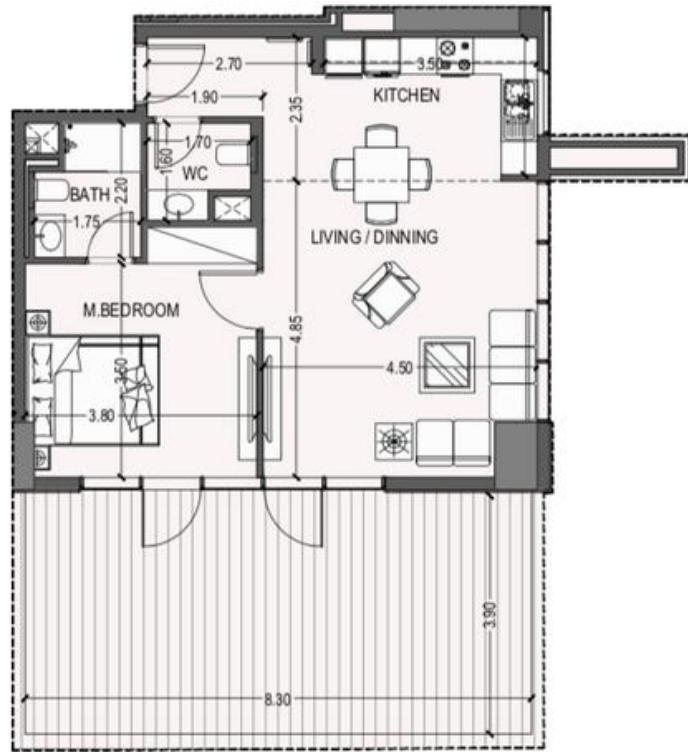
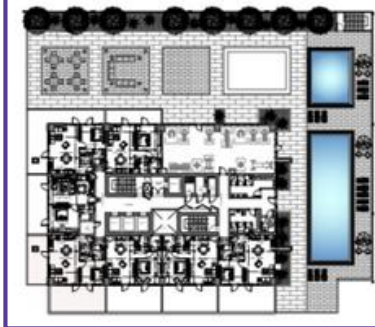


FLOOR PLANS

ONE-BEDROOM

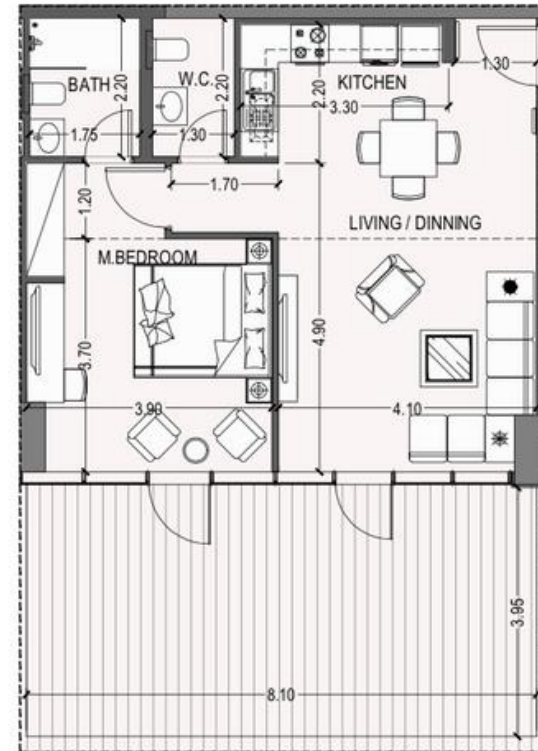
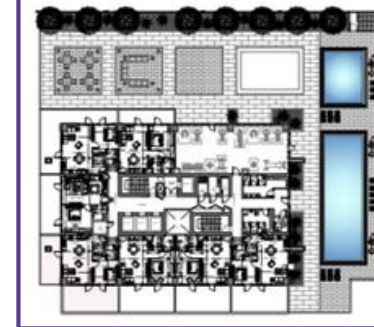
TYPE A

First floor | 1 flat



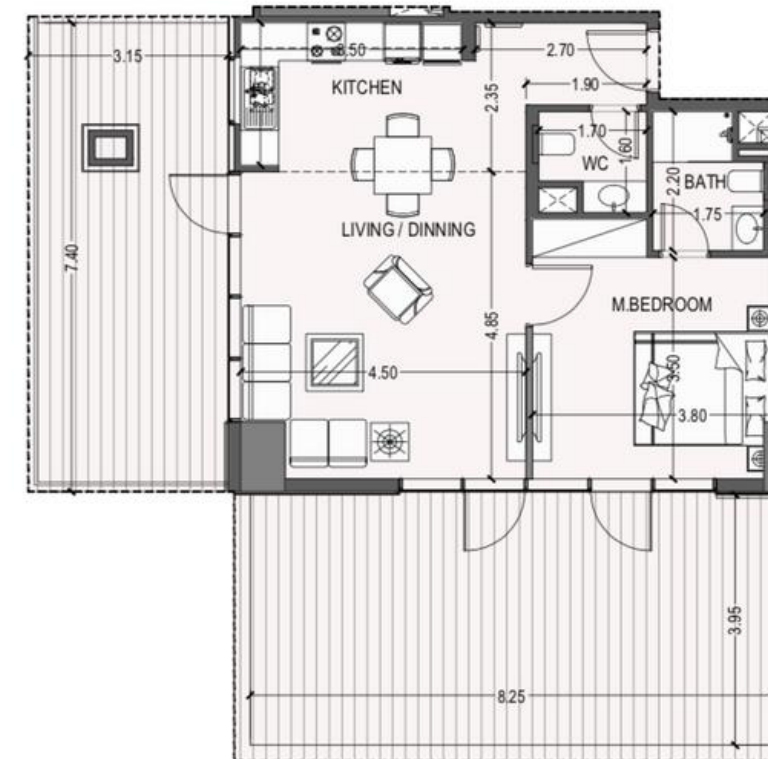
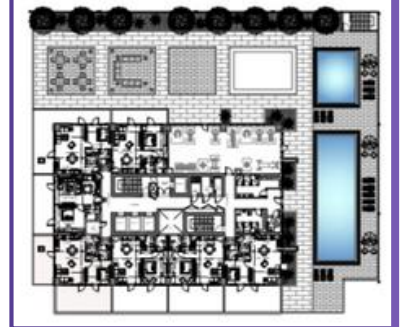
TYPE B

First floor | 1 flat



TYPE C

First floor | 1 flat

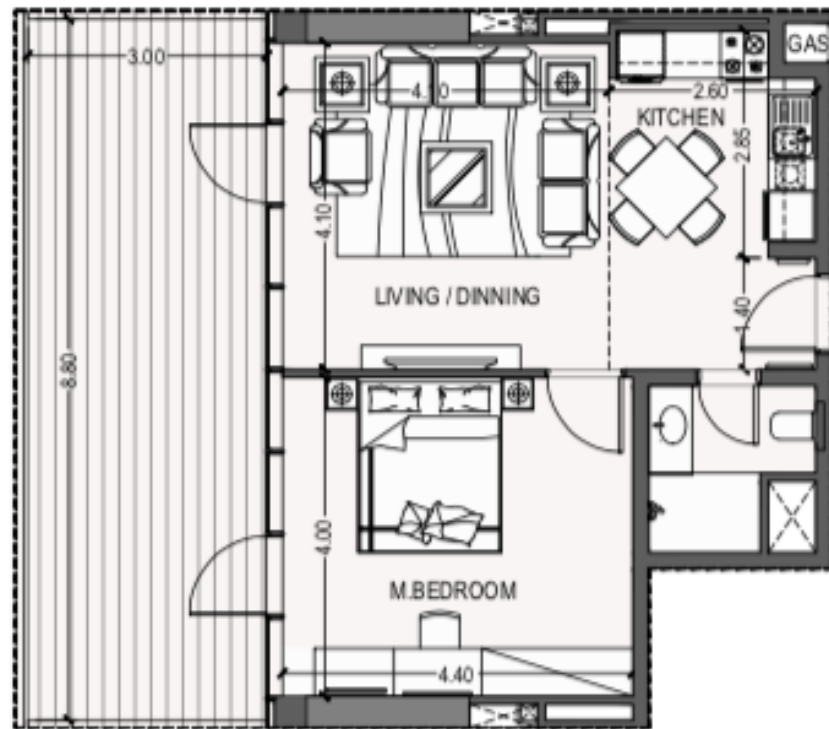
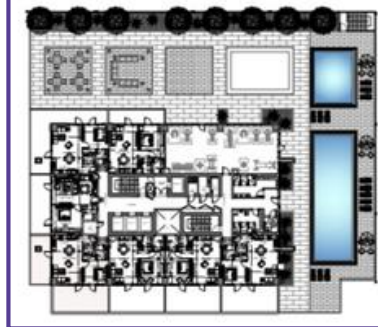


FLOOR PLANS

ONE-BEDROOM

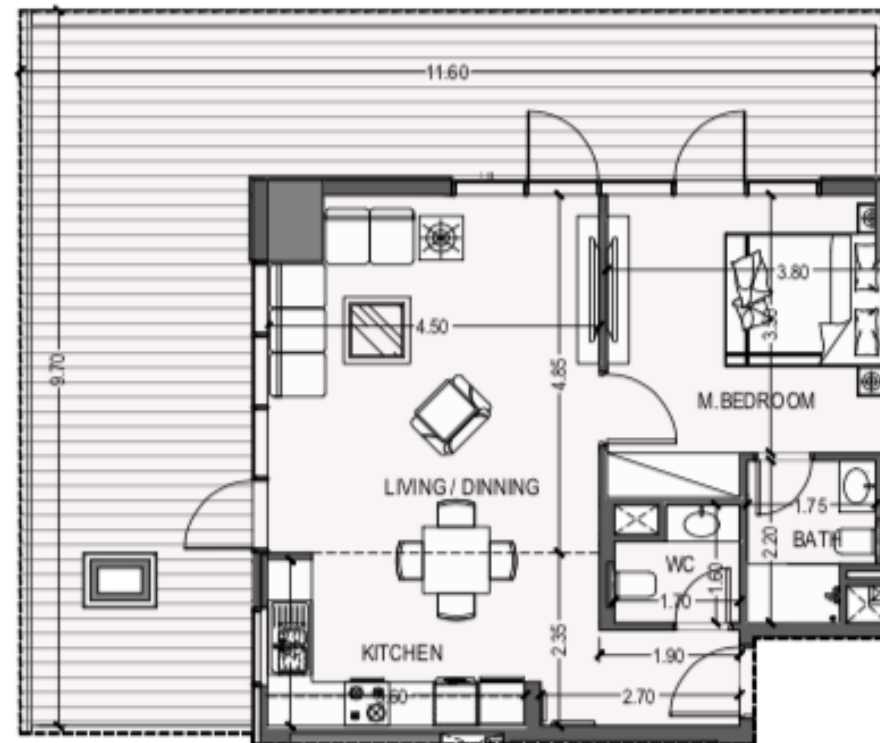
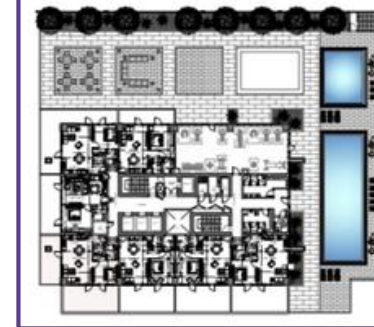
TYPE D

First floor | 1 flat



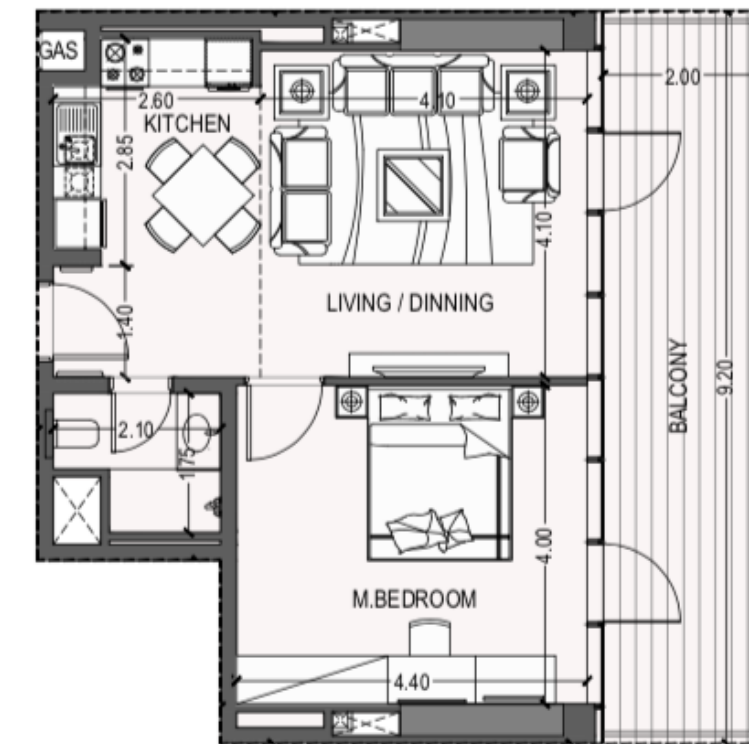
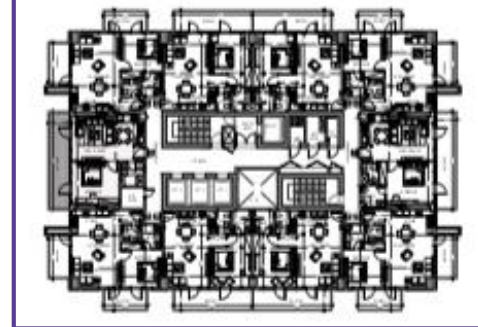
TYPE E

First floor | 1 flat



TYPE F

9th to 17th floor | 10 flats

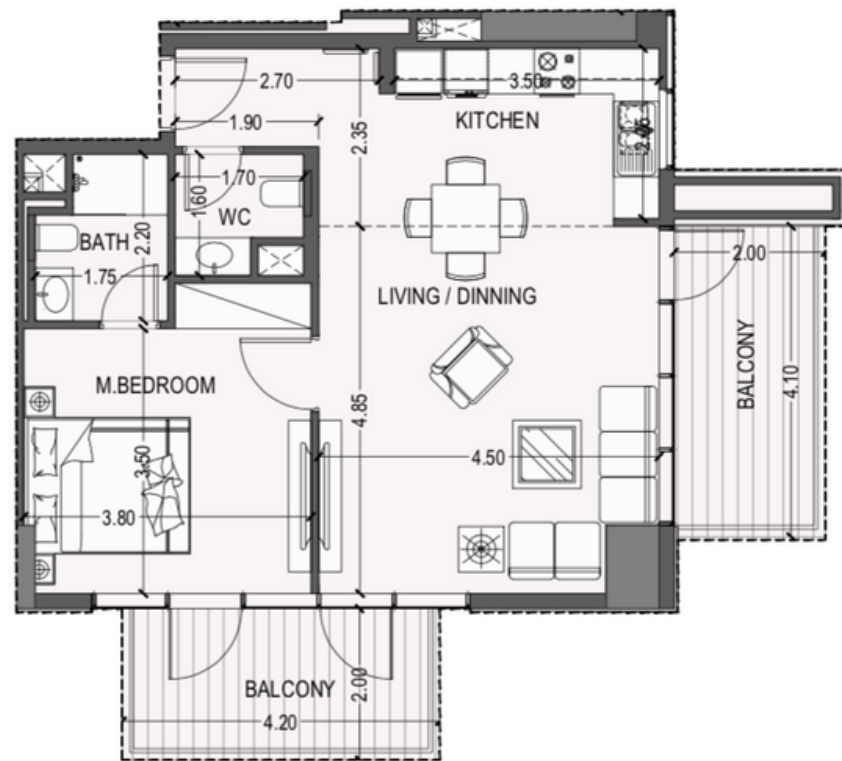
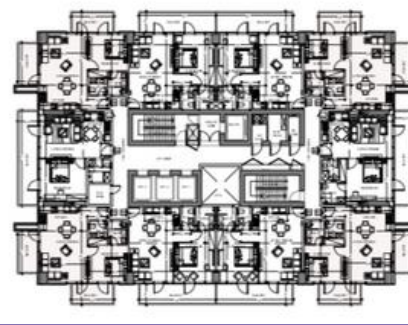


FLOOR PLANS

ONE-BEDROOM

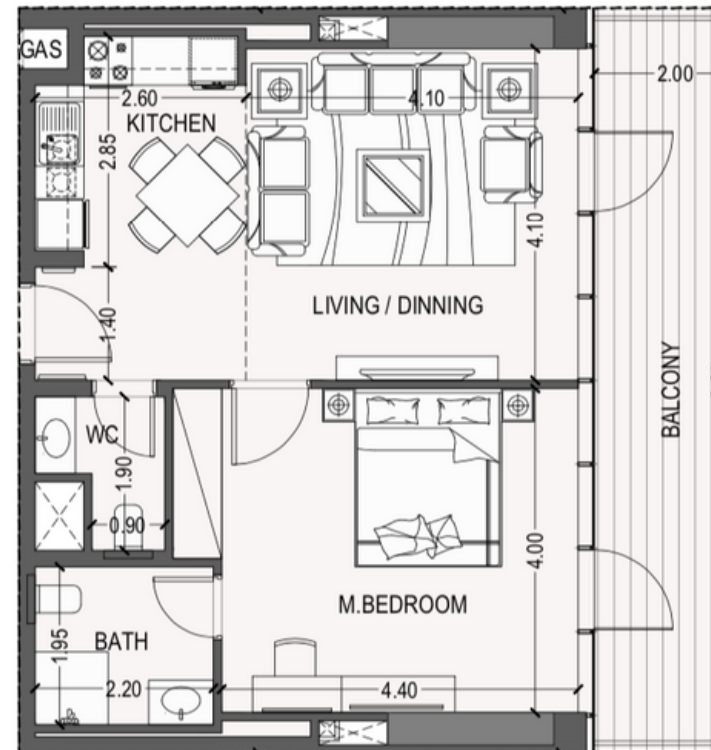
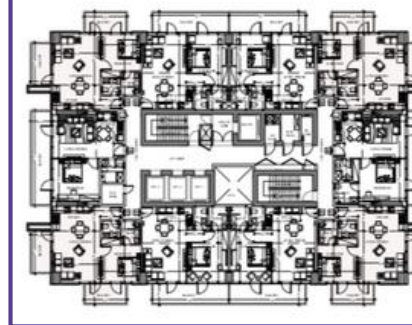
TYPE G

9th to 19th floor | 36 flats



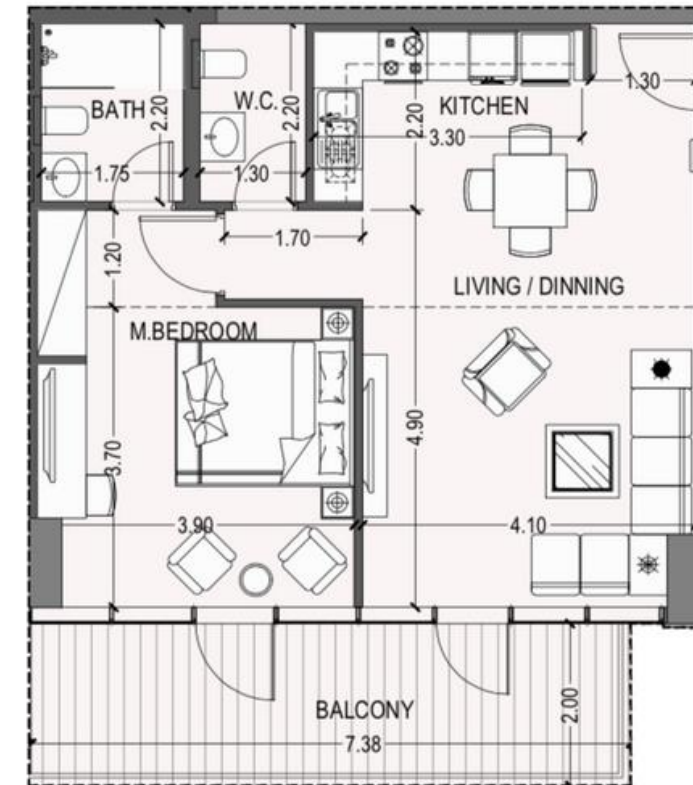
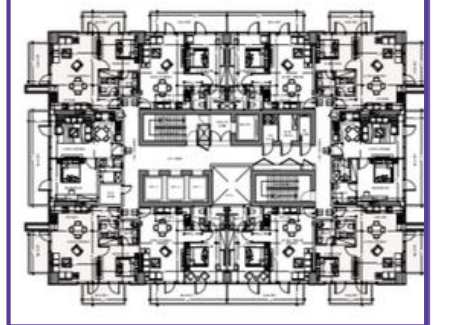
TYPE H

9th to 16th floor | 8 flats



TYPE J

2nd to 27th floor | 102 flats

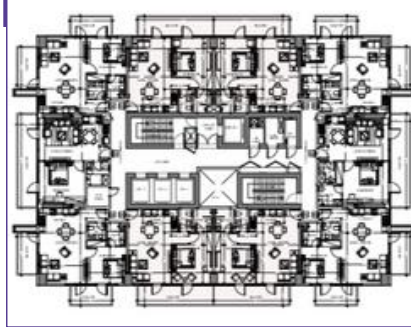
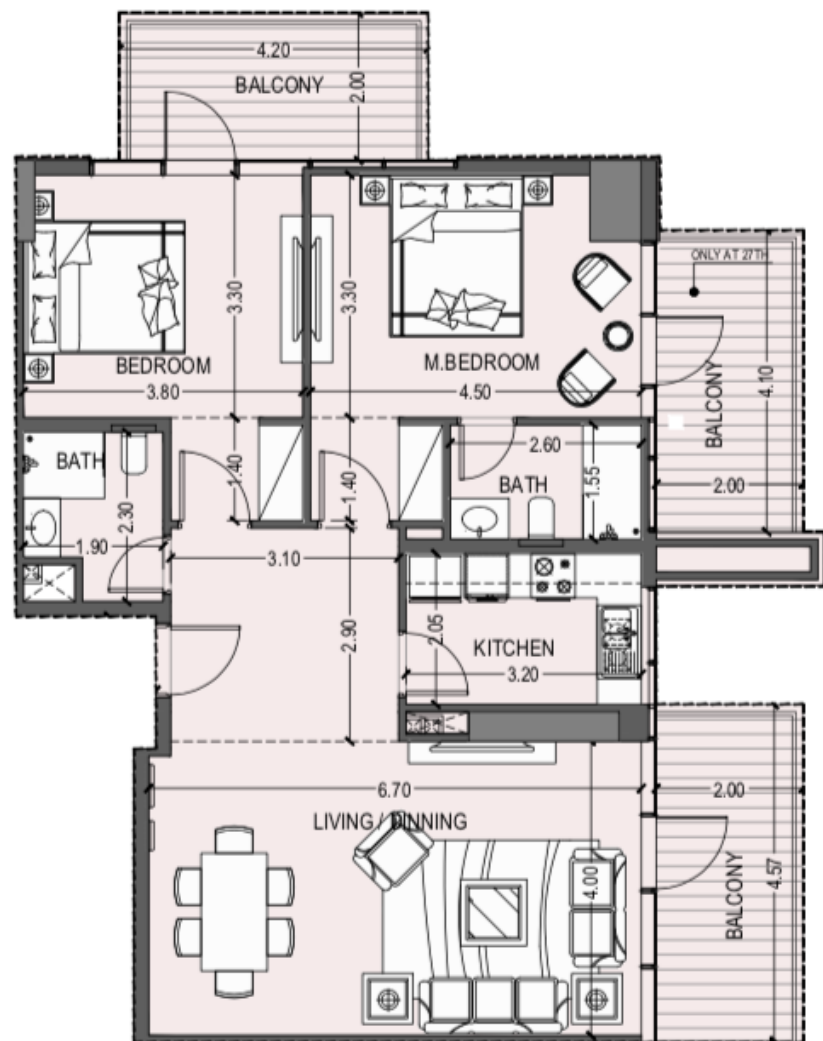


FLOOR PLANS

TWO-BEDROOM

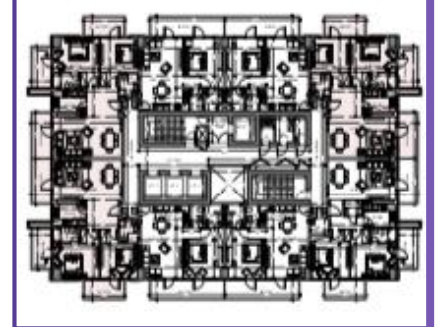
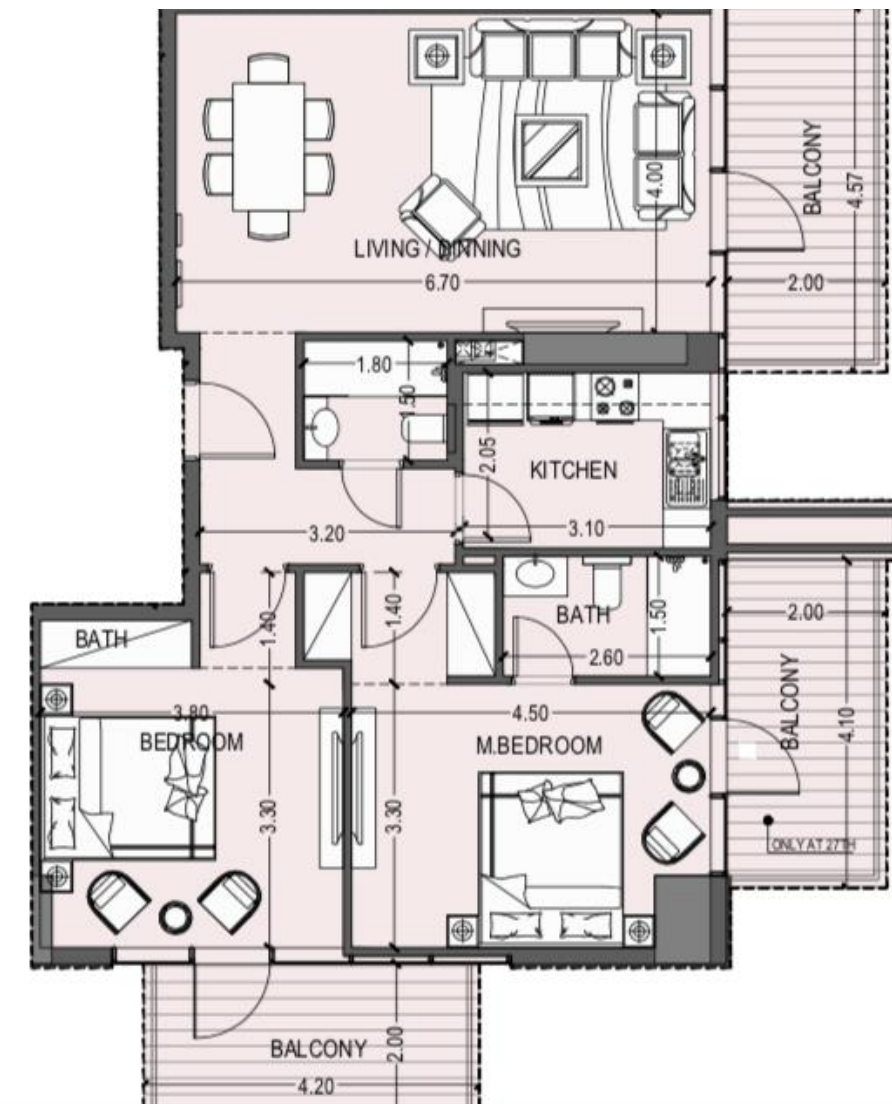
TYPE A

2nd to 27th floor | 30 flats



TYPE B

2nd to 27th floors | 10 flats



AMENITIES

Gymnasium

A modern gym facility with the latest in workout equipment

Pool

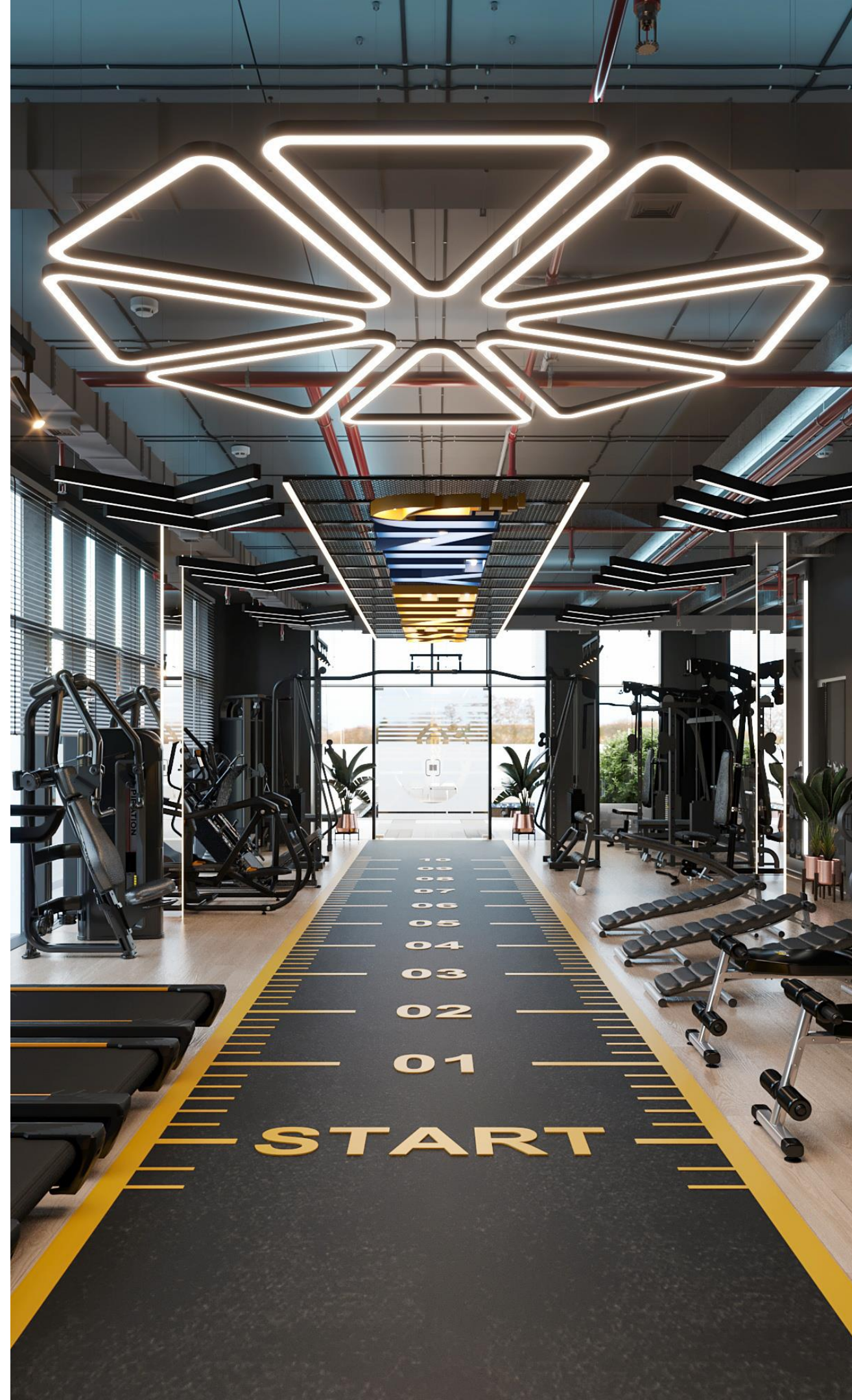
An inviting pool to cool down and refresh

Kids Playing Area

A safe and vibrant playing area for kids to enjoy their time

Poolside Lounge

A place to relax, unwind and enjoy a cold beverage or steaming BBQ under the sun



SUSTAINABLE COMMITMENT

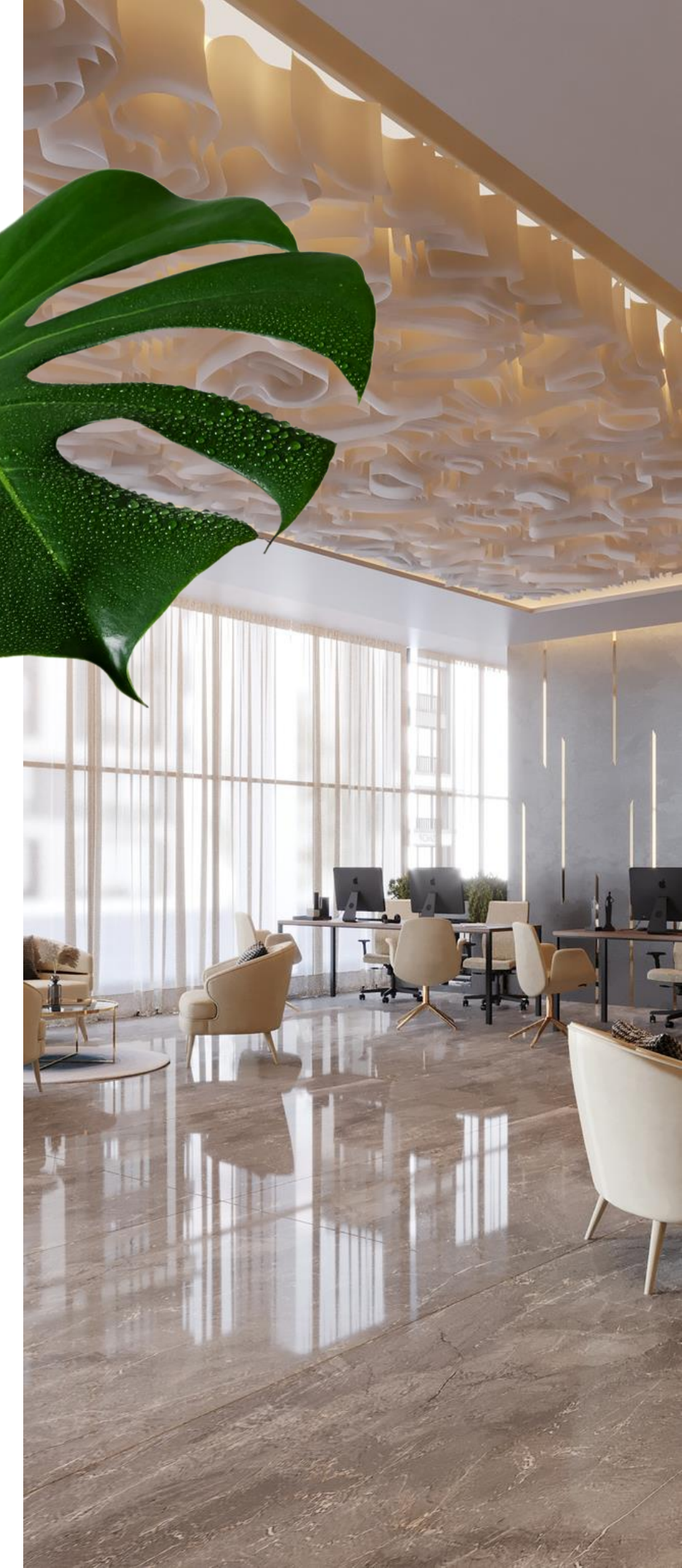
 Aligned with the Dubai Municipality Green Code

 Minimal ecological impact

 Sustainable design

 Energy-efficient solutions

 Waste reduction initiatives





For more information contact +9714 8122800
ESCROW : 490555920027 | Developer ID: 278 | RERA ID: 2824 | Transaction Number:
88108 www.violettower.com