

# AQUA ARC

BY BNW DEVELOPMENTS

AL MARJAN ISLAND

PROJECT INSPIRATION

Inspired by the awe-inspiring landscape of **Ras Al Khaimah**, where the majestic **Jais Mountain** stands proudly to create a mesmerizing panorama and unforgettable experience, **the design of AQUA ARC** reflects the grandeur of the peaks embracing each other to form a stunning valley.

*Here, nature reveals itself in its most magnificent form.*

Each balcony is crafted to mirror the tranquillity of the sea waves, epitomizing the harmonious blend of Ras Al Khaimah's natural environment where mountains meet the sea, composing **an everlasting symphony of beauty.**





**The main entrance**, positioned at the podium's top level, elevates the sense of luxury as vehicles ascend 5 meters above street level to reach the ceremonial drop-off point serving both buildings.

Each building boasts **a double-height entrance lobby**, ensuring a visual and physical connection between the arrival point and the exquisitely designed landscape, adorned with lush plantations and abundant water features. As the buildings ascend, they feature stepped-back floors, visually evoking the splendour of the mountain and providing expansive terraces for the apartments behind.

The top floor of each building houses penthouses with vast terraces, epitomizing **ultimate luxury and privacy**.

**The architecture of the building** gives the impression of two interconnected blocks, forming an inner paradise of landscape. These structures appear to open their arms in a welcoming gesture to visitors.

**The roof of the podium** features openings and holes that offer glimpses of caves etched into the Jais Mountain range, complemented by cascading water and various outdoor activities, enhancing the allure of this Hidden Gem.

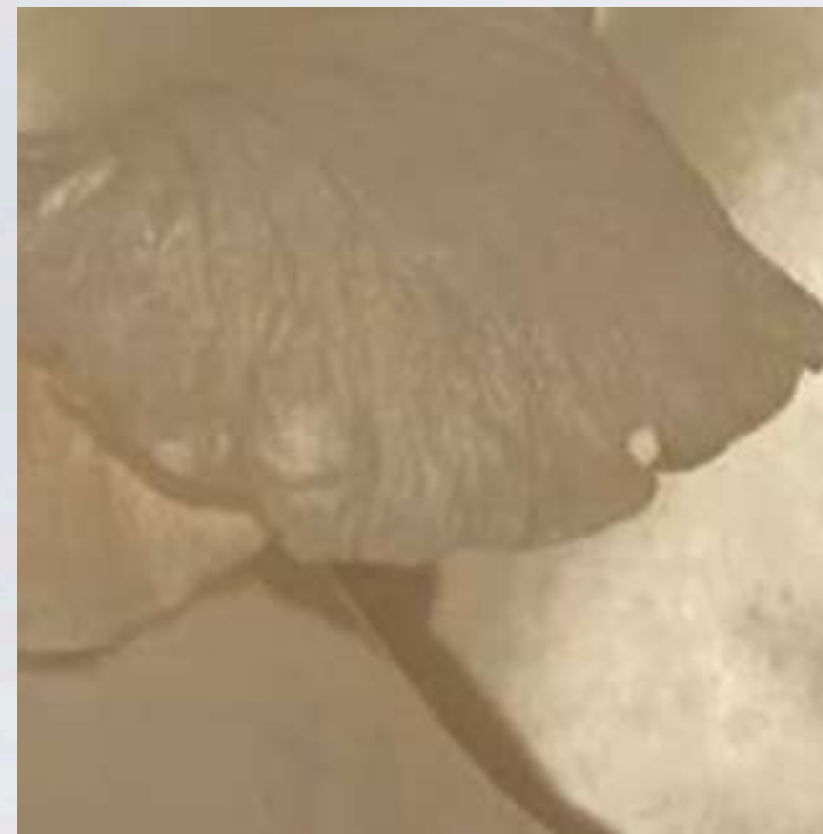




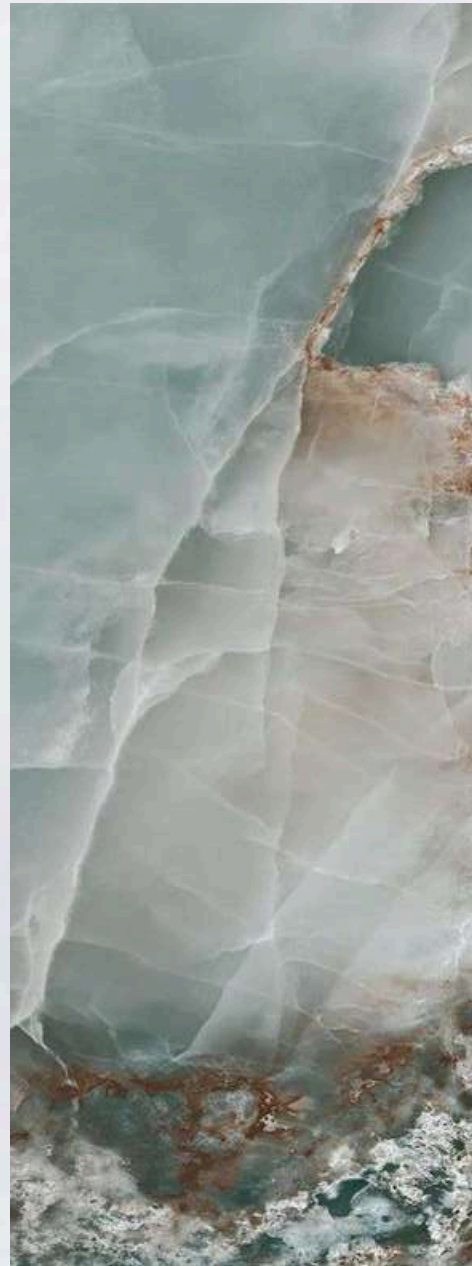
# Concept

Nestled along the picturesque coastline of Ras Al Khaimah, the property offers unparalleled views of the crystal-like waters, creating a serene backdrop for your everyday life. Drawing inspiration from the hues and fluid forms of the sea, the residence **embodies the very essence of aqua** through its design elements.

The concept **transforms urban living spaces into relaxing retreats** reminiscent of oceanic paradises.



# Textures





# Materials

The cornerstone of the design concept is the biomimicry of natural elements using **materials that resonate and reflect the features of nature** into the interiors of urban residences.

Stones with veins reciprocating the sand, and metal finishes basking the glare of the sun on the water during golden hour and the azure of water.