

Tower B  
**CREST**  
GRANDE



UNIT & FLOOR PLANS



SOBHA HARTLAND





*At the beach*

life is different. Time doesn't move  
hour to hour but mood to moment. We  
live by the currents, plan by the tides  
and follow the Sun.

Sandy Gingras



Beachfront lives &  
*Miami vibes*



## Miami-inspired *lifestyle*

A classy, elegant, and cosmopolitan island lifestyle in the center of Dubai, with resort-style relaxation surrounded by untouched nature and soothing waterways, and stunning views of the Dubai skyline and the world's largest tower.



*Refresh . regain . refocus*



## In the Waterfront District of Sobha Hartland

Sobha Hartland enjoys a waterfront boardwalk that is exclusive to the residents of its community who enjoy their evenings as is meant to be.

*Pre-Launching*

Tower B

**CREST**  
GRANDE



Waterfront *lifestyle*





*Enviabile* AMENITIES

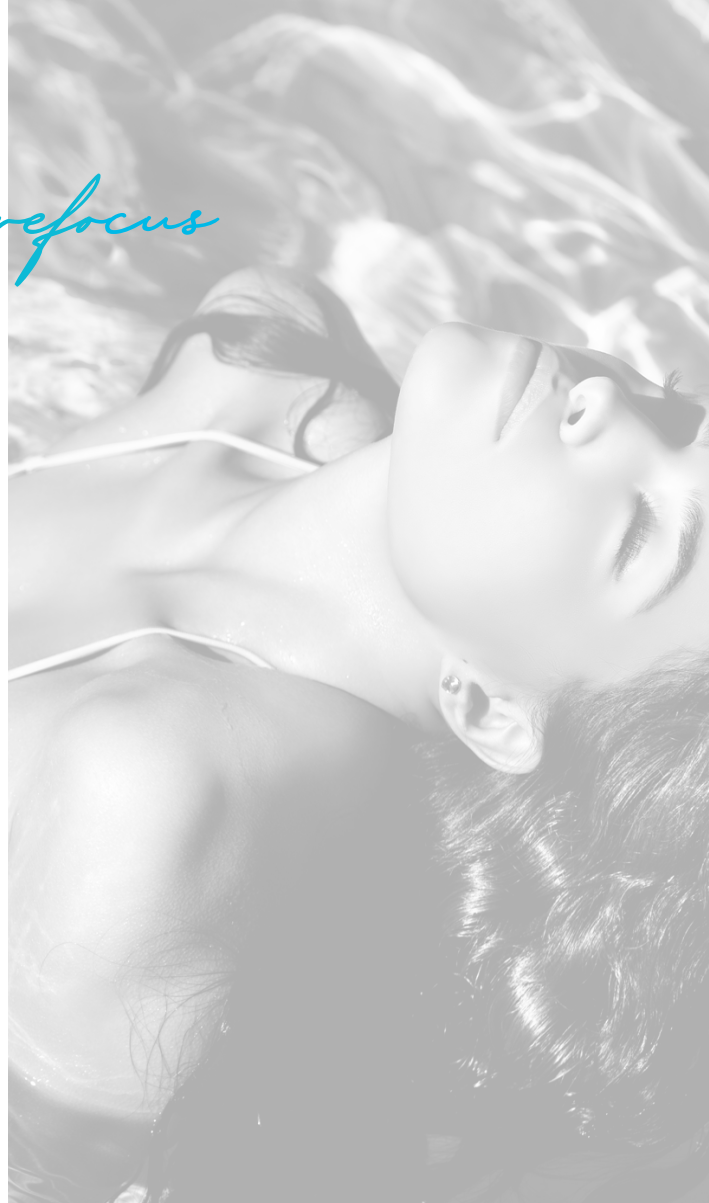
*Hustle . sweat . respect*



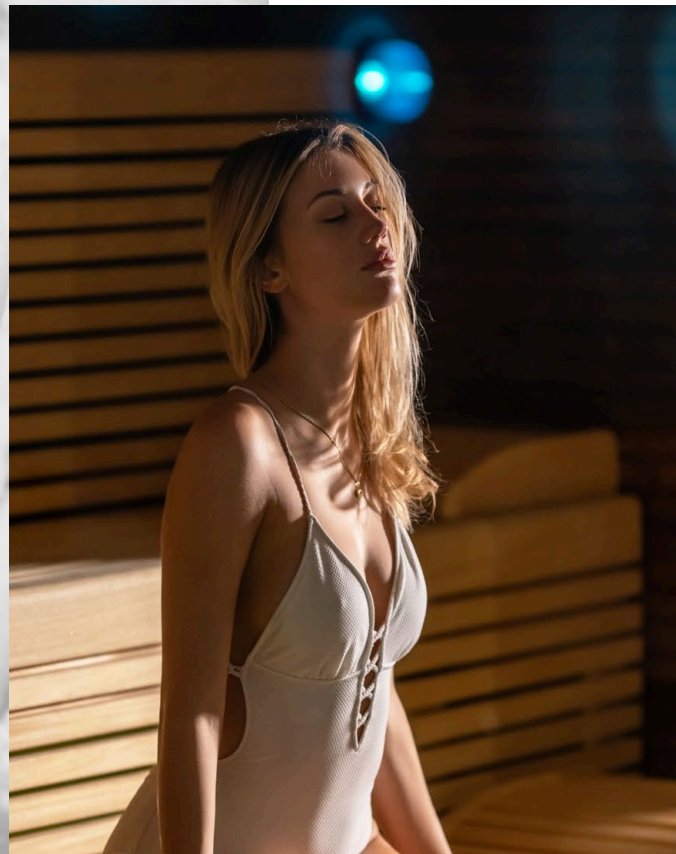
Indoor & Outdoor  
GYMNASIUM



*Refresh . regain . refocus*



A Pristine Adult & Kids  
SWIMMING POOL



## SAUNA ROOM





*Catch . run . hide*



A Dedicated Playing Area  
FOR YOUR KIDS

*Scenic · mouthwatering · cuisines*



## RETAIL & RESTAURANTS





A dedicated barbecue zone  
**TO ENJOY YOUR  
WEEKENDS**

Tower B

# CREST

GRANDE



1 & 2 bedroom Waterfront Apartments  
starting from **1.3 MN\***

## Payment Plan

**60%**  
during construction

**40%**  
2 year post completion

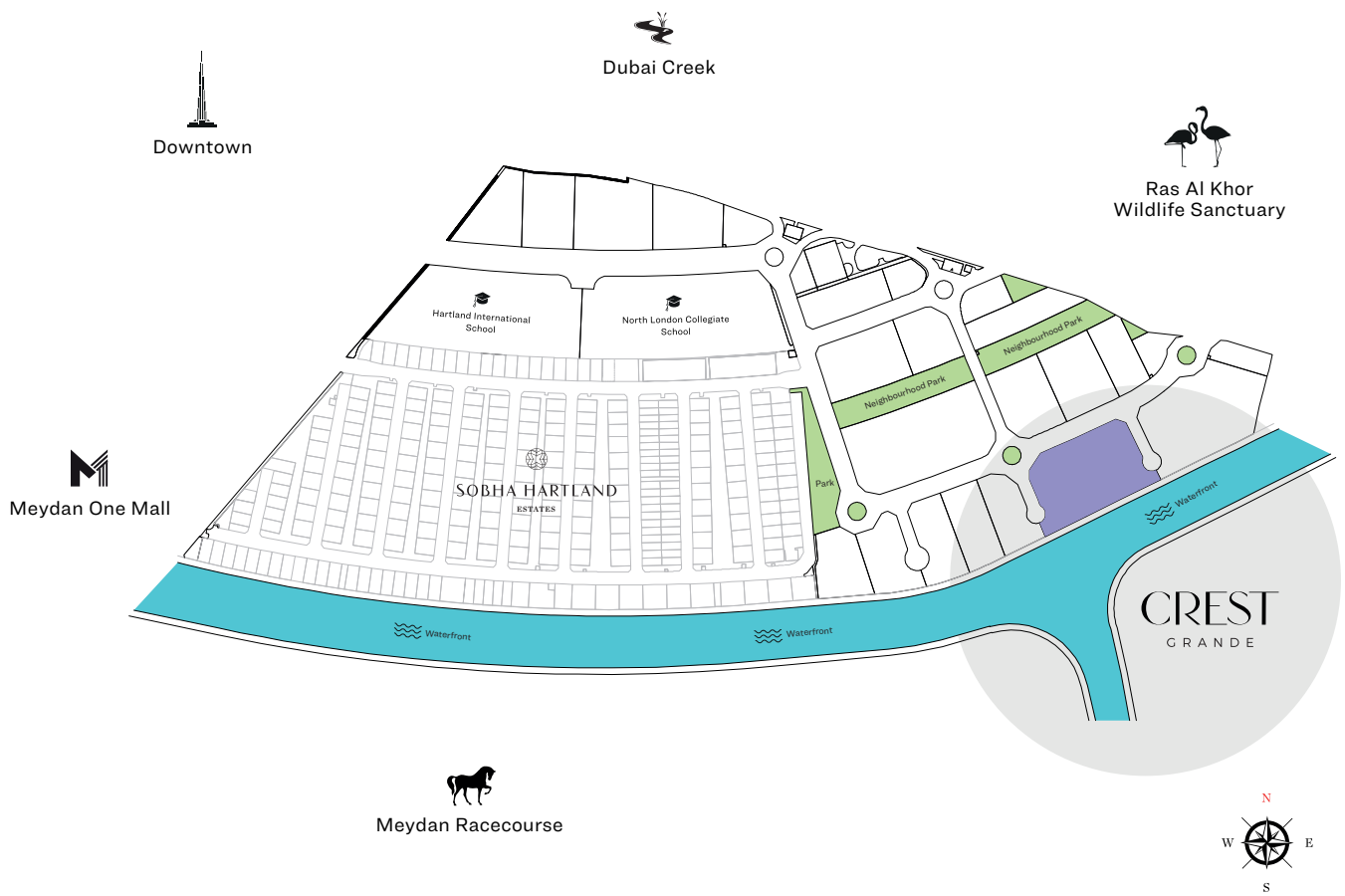


MASTER PLAN

FLOOR PLANS

RESIDENTIAL UNIT PLANS

# LOCATION IN THE MASTERPLAN



## APARTMENT FEATURES



Landmark views



Covered car parking

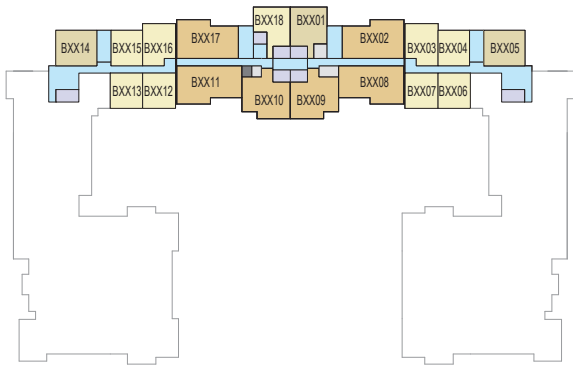


Fully fitted kitchens

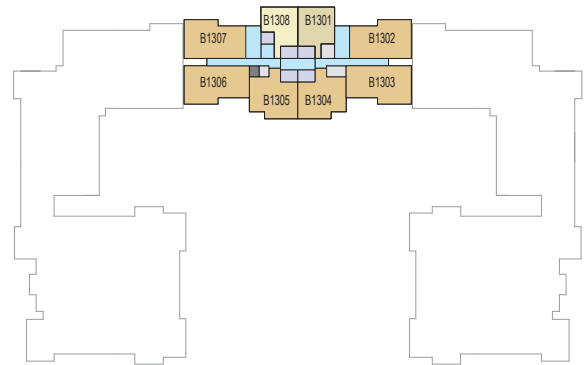


Bedroom wardrobe in all units

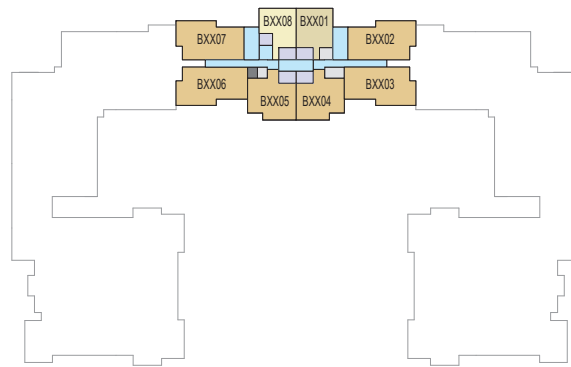
# FLOOR PLAN LAYOUT



LEVEL 07-12



LEVEL 13



LEVEL 14-35

- |   |  |
|---|--|
| <span style="display: inline-block; width: 15px; height: 15px; background-color: #f0e68c; border: 1px solid black; margin-right: 5px;"></span> 1 BED UNIT   | <span style="display: inline-block; width: 15px; height: 15px; background-color: #add8e6; border: 1px solid black; margin-right: 5px;"></span> LOBBIES, CORRIDORS & STAIRS |
| <span style="display: inline-block; width: 15px; height: 15px; background-color: #d2b48c; border: 1px solid black; margin-right: 5px;"></span> 1.5 BED UNIT | <span style="display: inline-block; width: 15px; height: 15px; background-color: #d3d3d3; border: 1px solid black; margin-right: 5px;"></span> SERVICES                    |
| <span style="display: inline-block; width: 15px; height: 15px; background-color: #cd853f; border: 1px solid black; margin-right: 5px;"></span> 2 BED UNIT   | <span style="display: inline-block; width: 15px; height: 15px; background-color: #696969; border: 1px solid black; margin-right: 5px;"></span> GARBAGE ROOM                |
| <span style="display: inline-block; width: 15px; height: 15px; background-color: #9370db; border: 1px solid black; margin-right: 5px;"></span> LIFT         |  |



# 1 BEDROOM APARTMENT

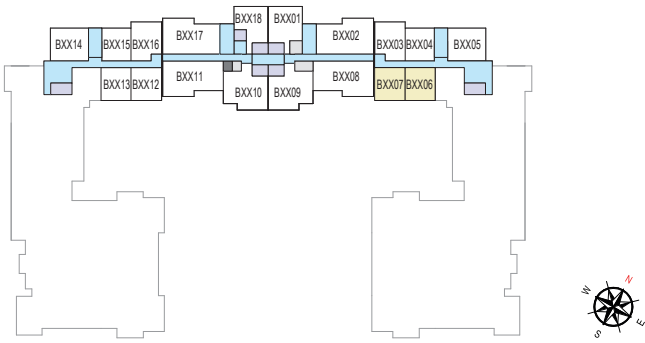
TYPE A (with Balcony) - VARIANT 1

## TOTAL SALEABLE AREA

SUITE RANGE = 659.29 SQ.FT. - 674.68 SQ.FT.

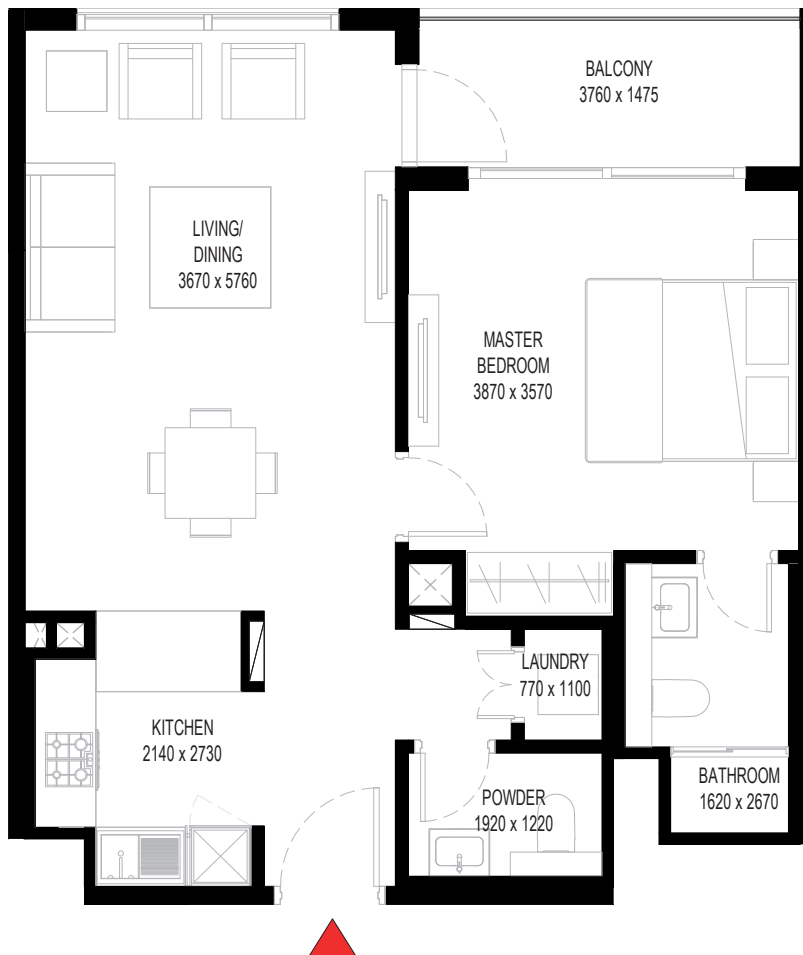
BALCONY RANGE = 70.07 SQ.FT. - 72.12 SQ.FT.

TOTAL RANGE = 731.41 SQ.FT. - 744.75 SQ.FT.



LEVEL 07-12

UNIT



List of unit numbers with this unit plan:

### VIEWS

Waterfront, Amenities

B0706, B0707, B0806, B0807, B0906, B0907, B1006, B1007, B1106, B1107, B1206, B1207



# 1 BEDROOM APARTMENT

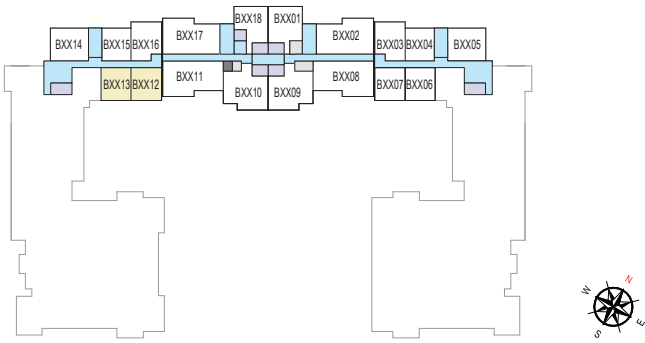
TYPE A (with Balcony) - VARIANT 2

**TOTAL SALEABLE AREA**

SUITE RANGE = 659.29 SQ.FT. - 675.22 SQ.FT.

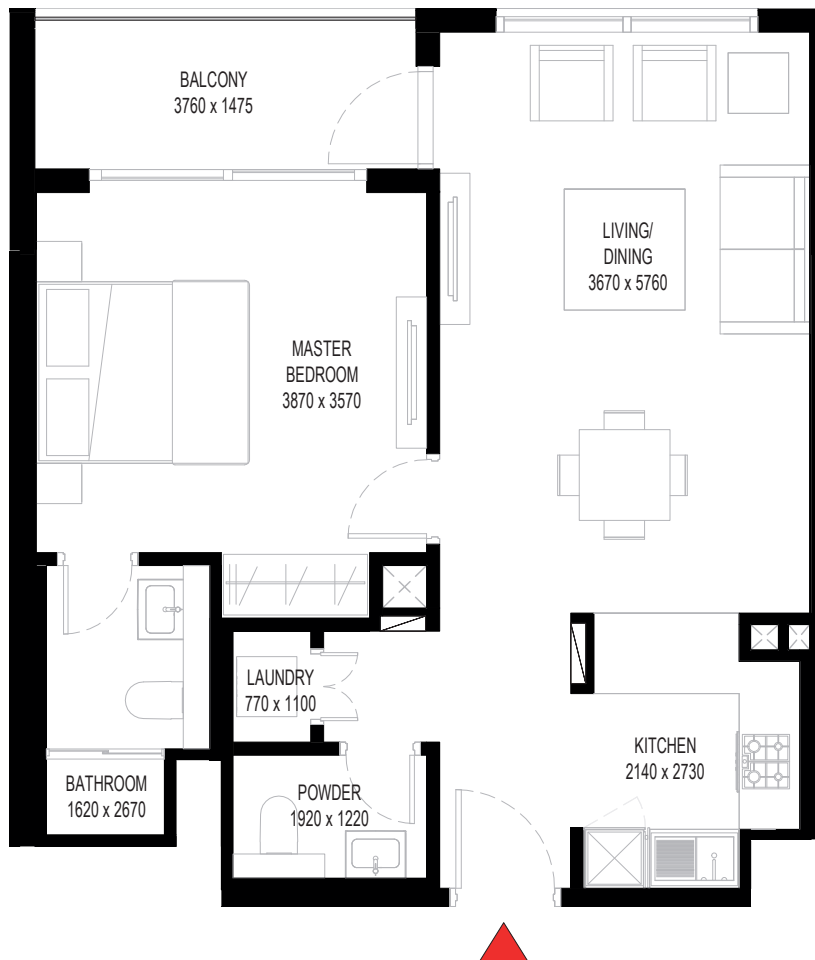
BALCONY RANGE = 71.90 SQ.FT. - 72.12 SQ.FT.

TOTAL RANGE = 731.41 SQ.FT. - 747.12 SQ.FT.



LEVEL 07-12

UNIT



List of unit numbers with this unit plan:

## VIEWS

Waterfront, Amenities

B0712, B0713, B0812, B0813, B0912, B0913, B1012, B1013, B1112, B1113, B1212, B1213



# 1 BEDROOM APARTMENT

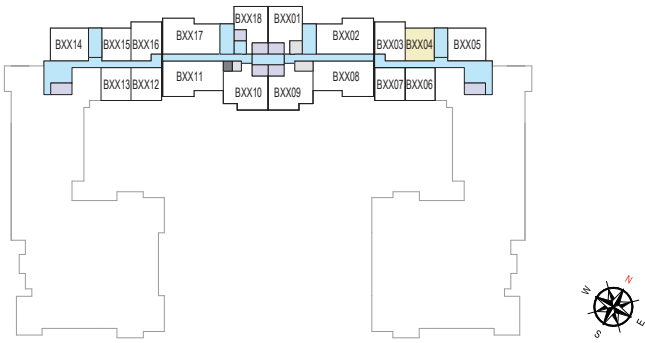
TYPE A (with Balcony) - VARIANT 6

## TOTAL SALEABLE AREA

SUITE = 659.94 SQ.FT.

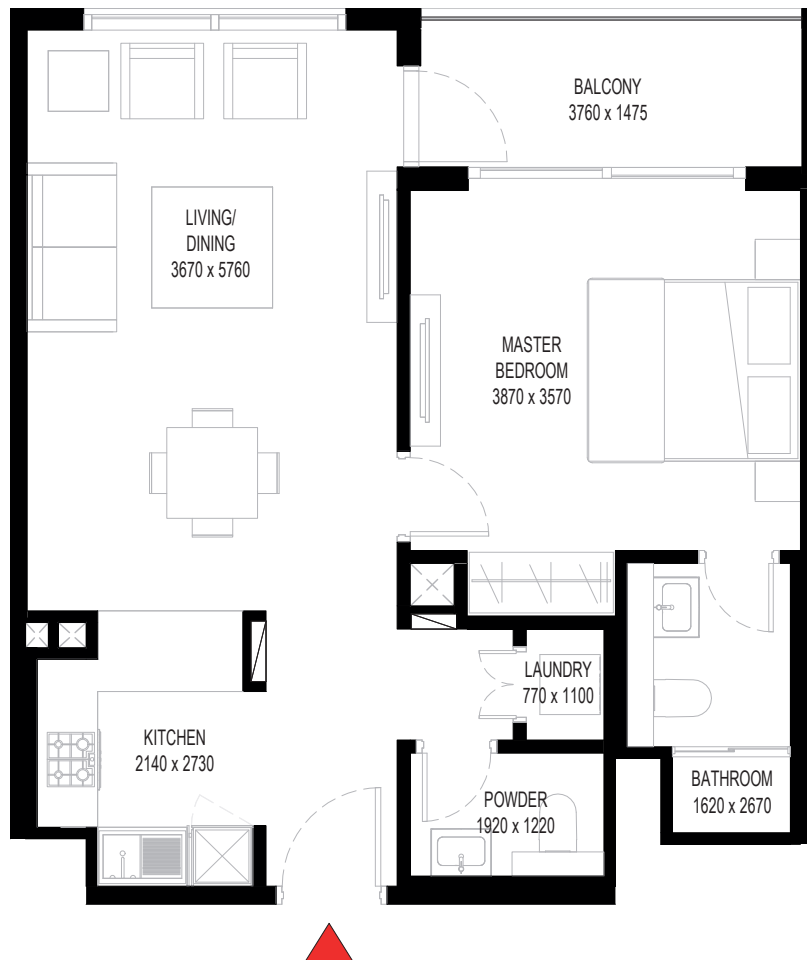
BALCONY = 71.90 SQ.FT.

TOTAL = 731.84 SQ.FT.



LEVEL 07-12

UNIT



List of unit numbers with this unit plan:

### VIEWS

Hartland

B0704, B0804, B0904, B1004, B1104, B1204





# 1 BEDROOM APARTMENT

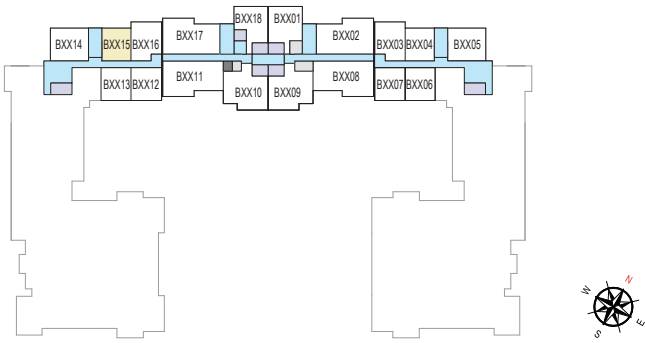
TYPE A (with Balcony) - VARIANT 7

## TOTAL SALEABLE AREA

SUITE = 659.94 SQ.FT.

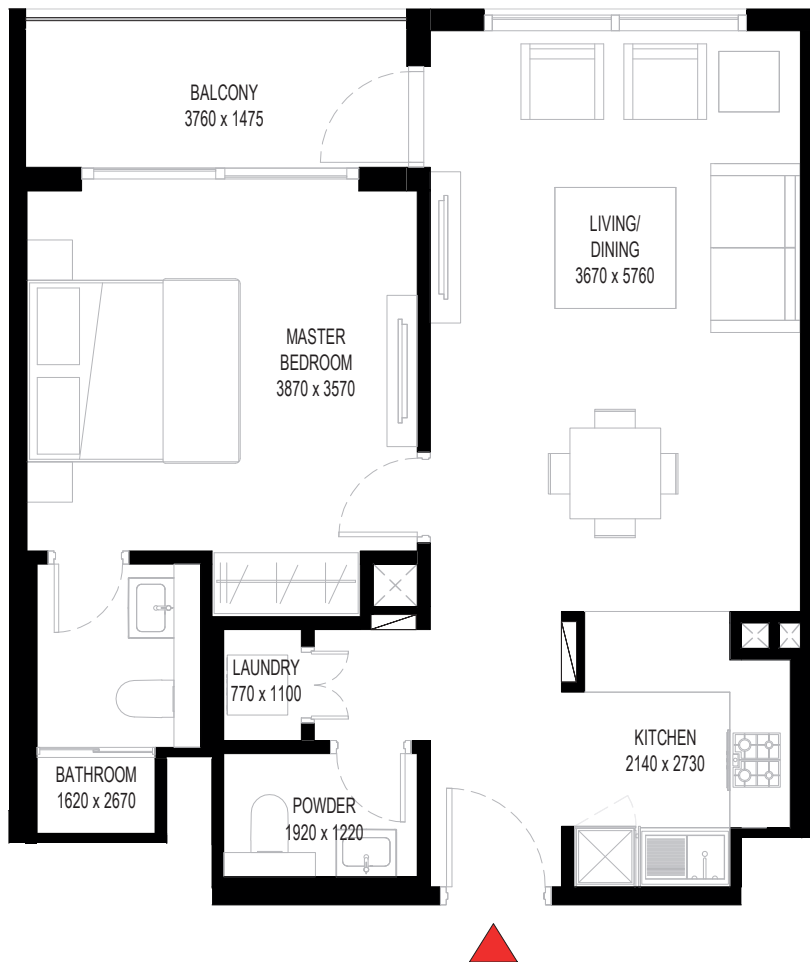
BALCONY = 71.90 SQ.FT.

TOTAL = 731.84 SQ.FT.



LEVEL 07-12

UNIT



List of unit numbers with this unit plan:

### VIEWS

Hartland

B0715, B0815, B0915, B1015, B1115, B1215



# 1 BEDROOM APARTMENT

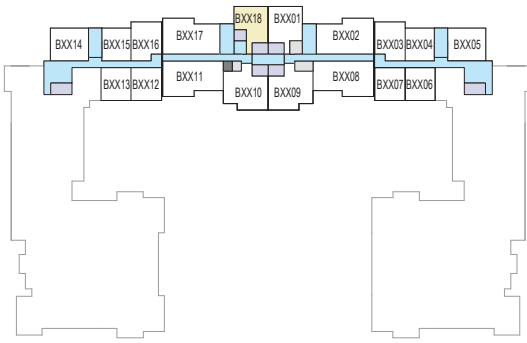
TYPE B (with Balcony)

**TOTAL SALEABLE AREA**

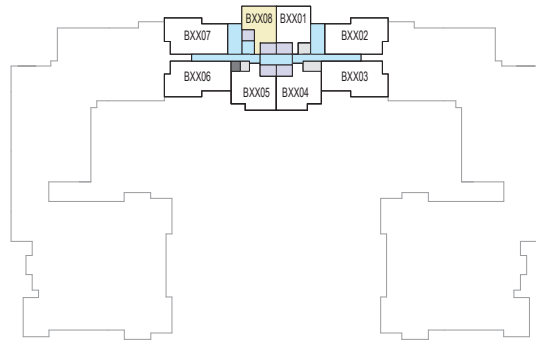
SUITE = 820.43 SQ.FT.

BALCONY = 83.42 SQ.FT.

TOTAL = 903.85 SQ.FT.



LEVEL 07-12



LEVEL 13-35



UNIT



List of unit numbers with this unit plan:

## VIEWS

Hartland

B0718, B0818, B0918, B1018, B1118, B1218, B1308

Hartland, Ras Al Khor

B1408

Hartland, Downtown, Ras Al Khor

B1508, B1608, B1708, B1808, B1908, B2008, B2108, B2208, B2308, B2408

Hartland, Downtown, Burj Khalifa, Ras Al Khor

B2508, B2608, B2708, B2808, B2908, B3008, B3108, B3208, B3308, B3408, B3508

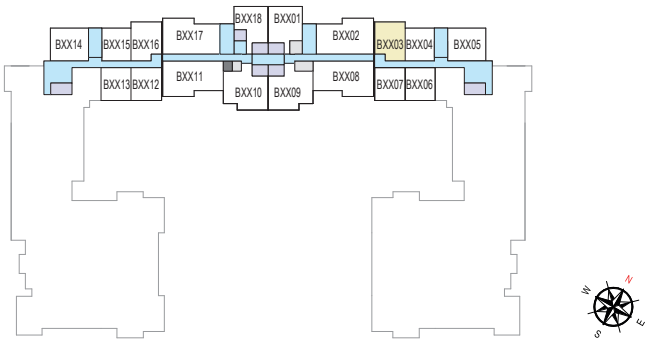


# 1 BEDROOM APARTMENT

TYPE C (with Balcony)

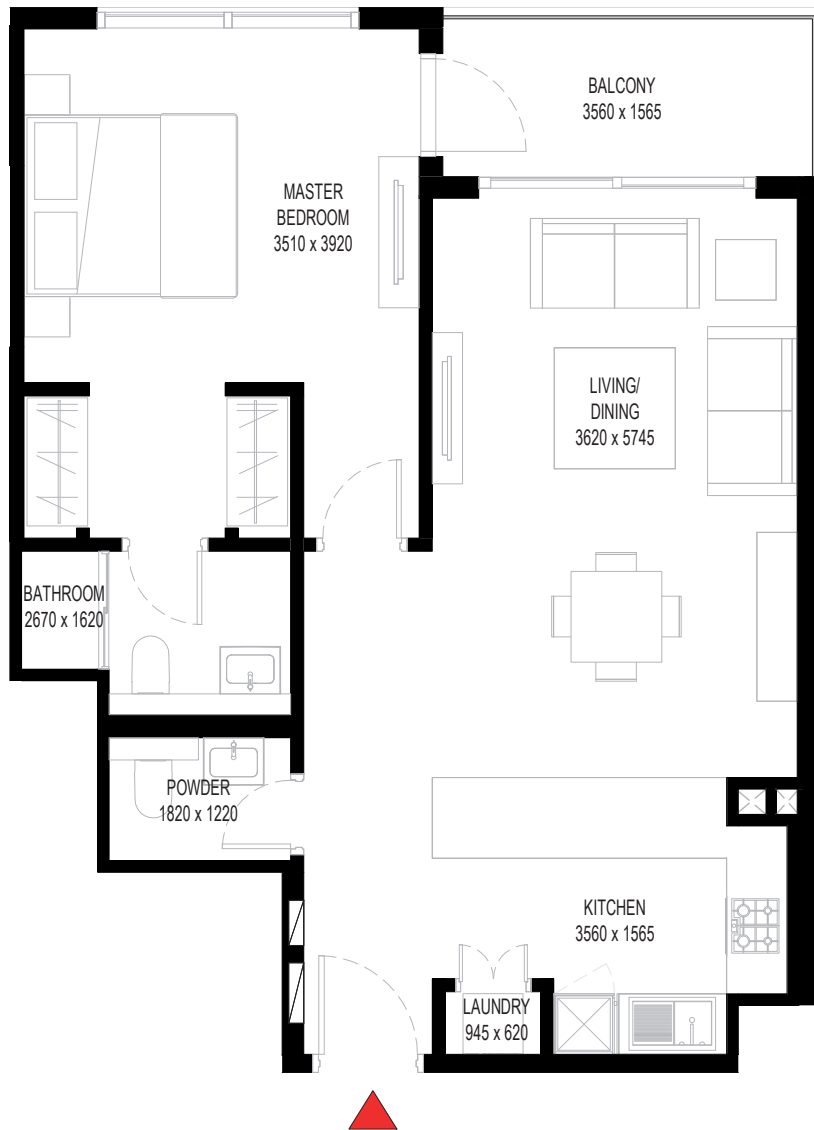
## TOTAL SALEABLE AREA

SUITE = 767.25 SQ.FT.  
BALCONY = 67.92 SQ.FT.  
TOTAL = 835.17 SQ.FT.



LEVEL 07-12

UNIT



List of unit numbers with this unit plan:

### VIEWS

Hartland  
B0703, B0803, B0903, B1003, B1103, B1203





# 1 BEDROOM APARTMENT

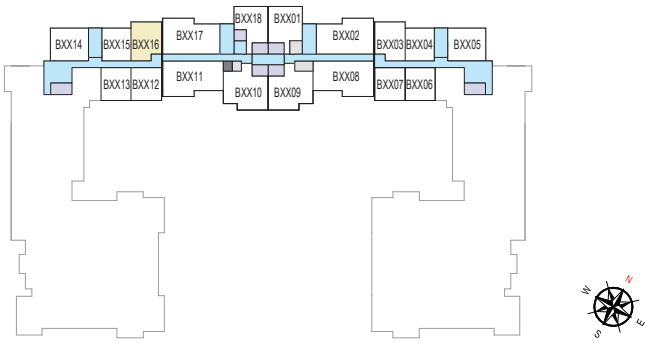
TYPE C (with Balcony) - VARIANT 1

## TOTAL SALEABLE AREA

SUITE = 767.14 SQ.FT.

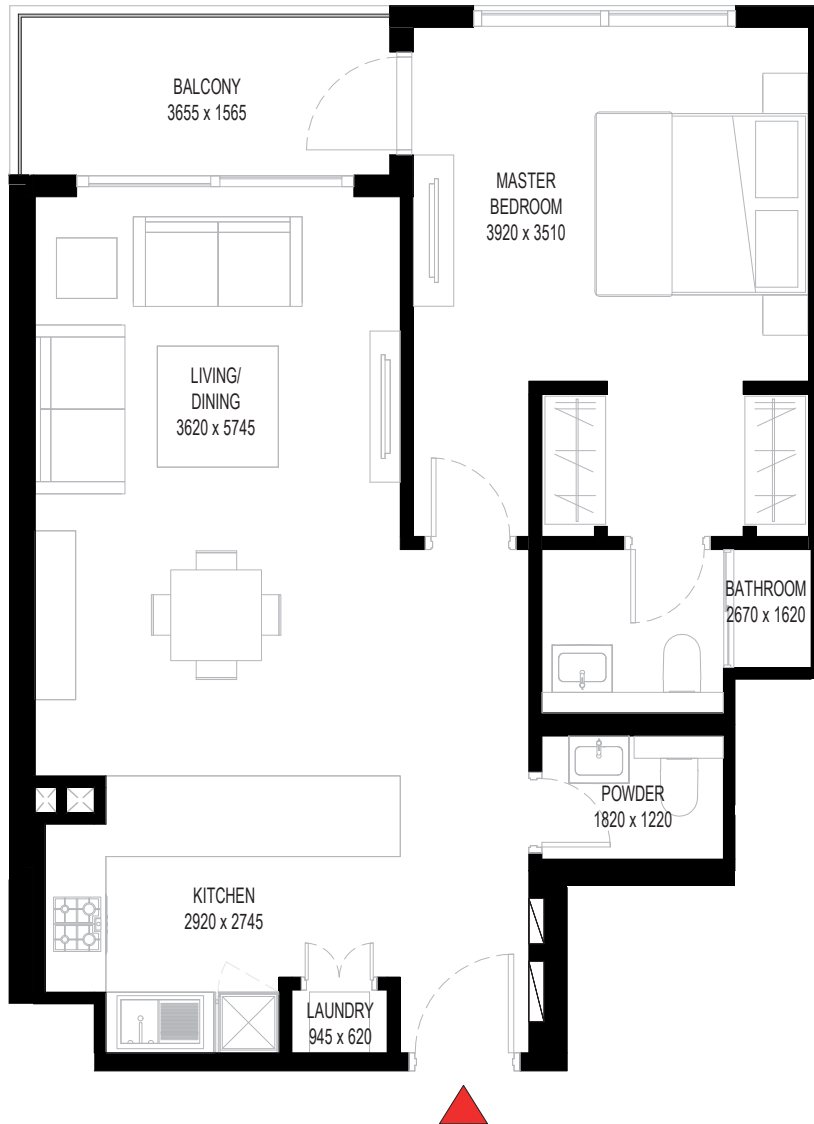
BALCONY = 68.03 SQ.FT.

TOTAL = 835.17 SQ.FT.



LEVEL 07-12

UNIT



List of unit numbers with this unit plan:

### VIEWS

Hartland

B0716, B0816, B0916, B1016, B1116, B1216

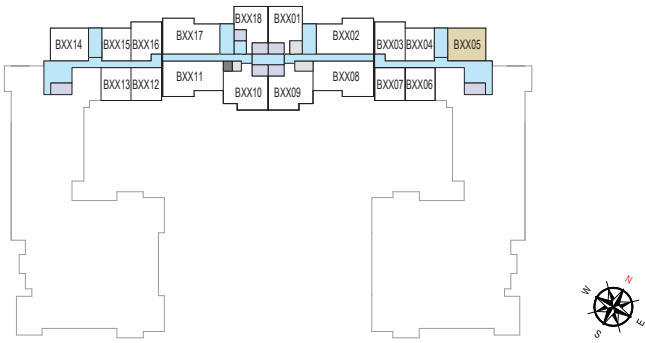


# 1.5 BEDROOM APARTMENT

TYPE A (with Balcony)

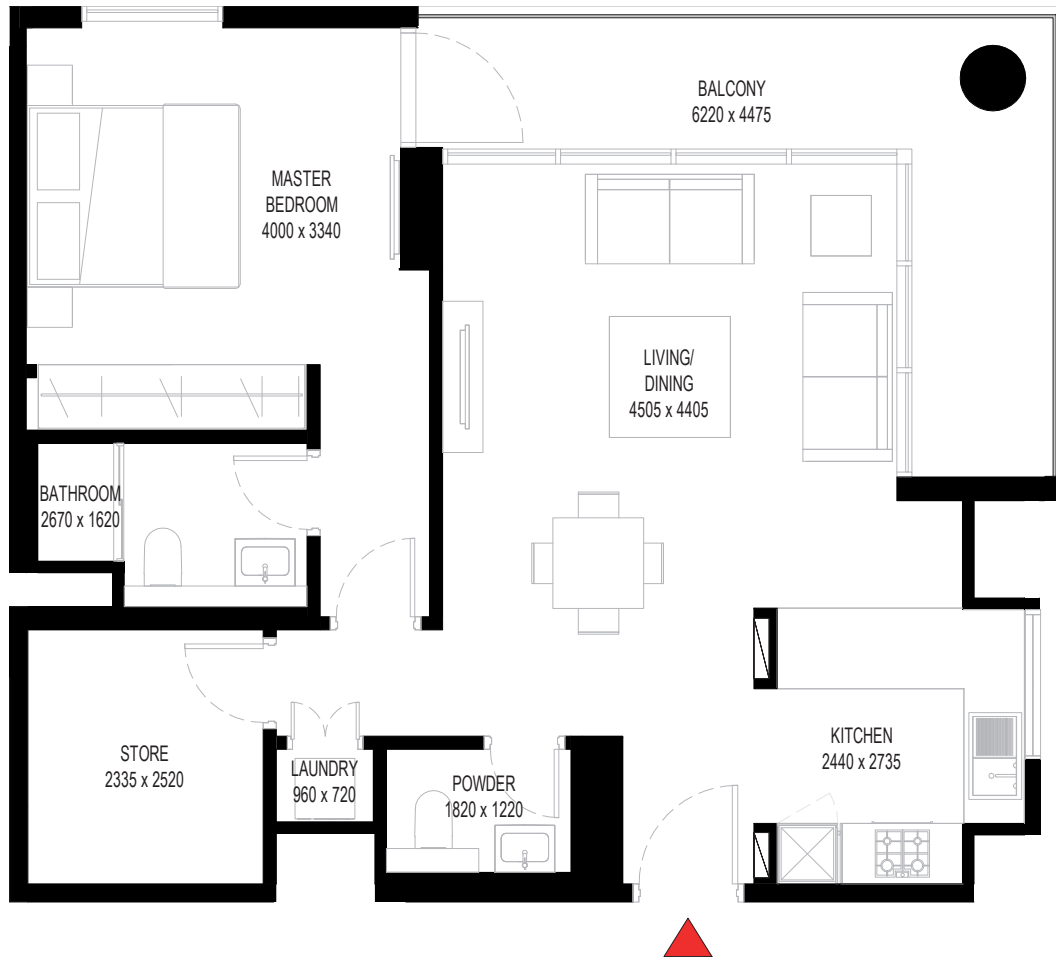
## TOTAL SALEABLE AREA

SUITE = 792.33 SQ.FT.  
BALCONY = 147.90 SQ.FT.  
TOTAL = 940.23 SQ.FT.



LEVEL 07-12

UNIT



List of unit numbers with this unit plan:

### VIEWS

Hartland, Ras Al Khor  
B0705, B0805, B0905, B1005, B1105, B1205



# 1.5 BEDROOM APARTMENT

TYPE A (with Balcony) - VARIANT 1

## TOTAL SALEABLE AREA

SUITE = 792.12 SQ.FT.

BALCONY = 148 SQ.FT.

TOTAL = 940.12 SQ.FT.



LEVEL 07-12

UNIT



List of unit numbers with this unit plan:

### VIEWS

Hartland

BO714, BO814, BO914, B1014, B1114, B1214





# 1.5 BEDROOM APARTMENT

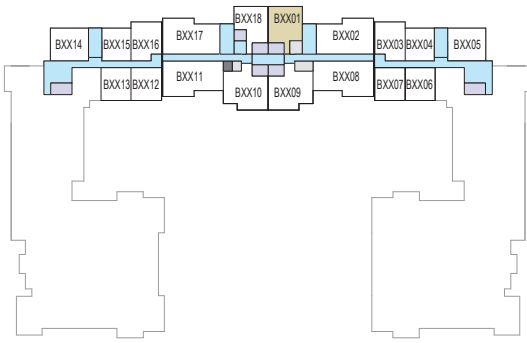
TYPE E (with Balcony)

**TOTAL SALEABLE AREA**

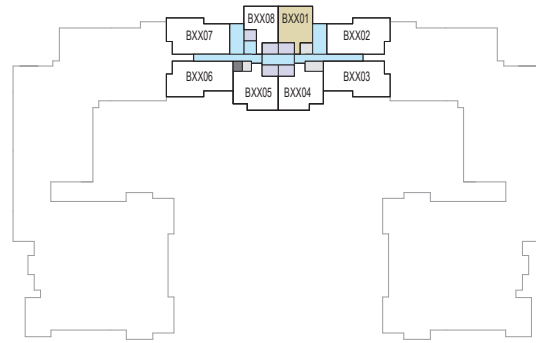
SUITE RANGE = 958.53 SQ.FT. - 959.60 SQ.FT.

BALCONY RANGE = 83.21 SQ.FT. - 84.28 SQ.FT.

TOTAL = 1,042.81 SQ.FT.



LEVEL 07-12



LEVEL 13-35



UNIT



List of unit numbers with this unit plan:

## VIEWS

Hartland

B0701, B0801, B0901, B1101, B1201, B1301

Hartland, Ras Al Khor

B1401

Hartland, Downtown, Ras Al Khor

B1501, B1601, B1701, B1801, B1901, B2101, B2201, B2301, B2401

Hartland, Downtown, Burj Khalifa, Ras Al Khor

B2501, B2601, B2701, B2801, B2901, B3101, B3201, B3301, B3401, B3501

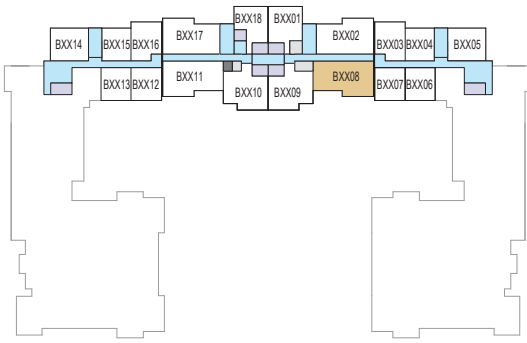


# 2 BEDROOM APARTMENT

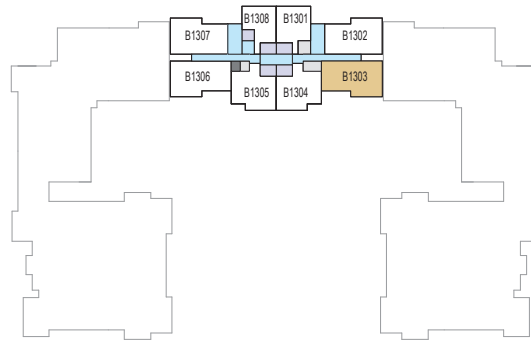
TYPE B (with Maid Room + Balcony)

## TOTAL SALEABLE AREA

SUITE = 1,270.46 SQ.FT.  
 BALCONY = 140.04 SQ.FT.  
 TOTAL = 1,410.50 SQ.FT.



LEVEL 07-12



LEVEL 13



UNIT



List of unit numbers with this unit plan:

### VIEWS

Waterfront, Amenities  
 B0708, B0808, B0908, B1008, B1108, B1208, B1303

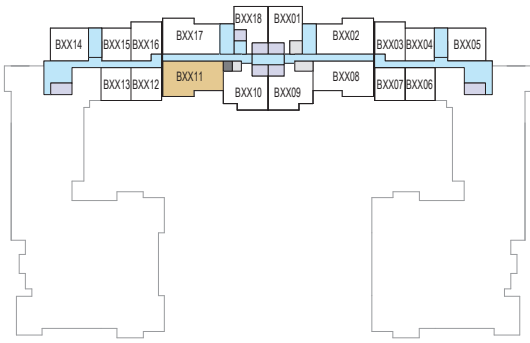


# 2 BEDROOM APARTMENT

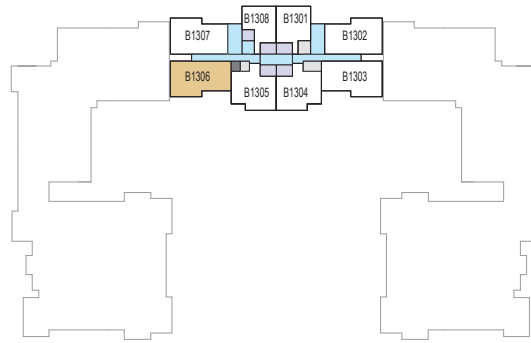
TYPE B (with Maid Room + Balcony) - VARIANT 1

## TOTAL SALEABLE AREA

SUITE = 1,264.44 SQ.FT.  
BALCONY = 147.14 SQ.FT.  
TOTAL = 1,411.58 SQ.FT.



LEVEL 07-12



LEVEL 13



UNIT



List of unit numbers with this unit plan:

### VIEWS

Waterfront, Amenities

B0711, B0811, B0911, B1011, B1111, B1211, B1306





# 2 BEDROOM APARTMENT

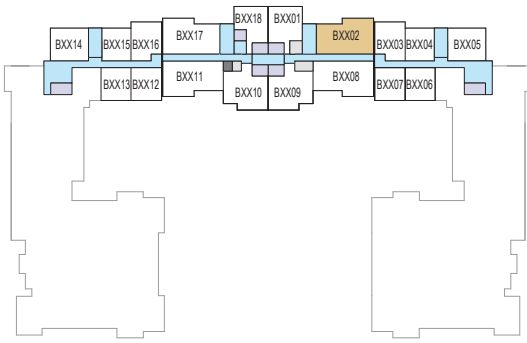
TYPE C (with Maid Room + Balcony)

## TOTAL SALEABLE AREA

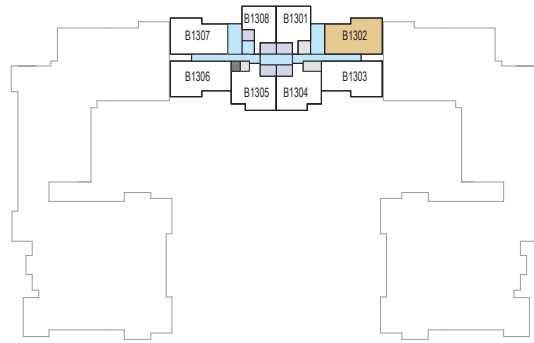
SUITE = 1,244.42 SQ.FT.

BALCONY = 140.25 SQ.FT.

TOTAL = 1,384.67 SQ.FT.



LEVEL 07-12



LEVEL 13



UNIT



List of unit numbers with this unit plan:

### VIEWS

Hartland

B0702, B0802, B0902, B1002, B1102, B1202, B1302

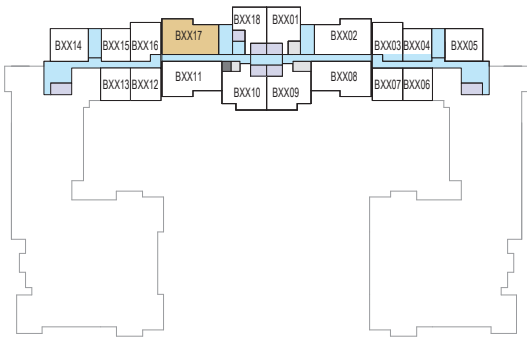


# 2 BEDROOM APARTMENT

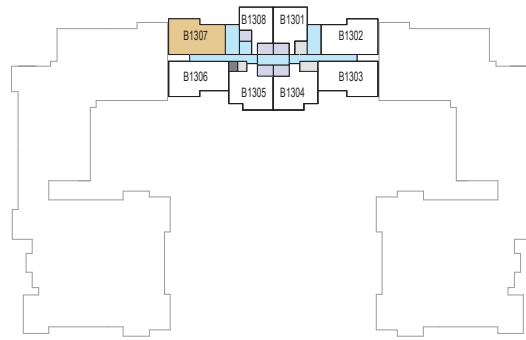
TYPE C (with Maid Room + Balcony) - VARIANT 1

## TOTAL SALEABLE AREA

SUITE = 1,241.51 SQ.FT.  
 BALCONY = 143.05 SQ.FT.  
 TOTAL = 1,384.56 SQ.FT.



LEVEL 07-12



LEVEL 13



■ UNIT



List of unit numbers with this unit plan:

### VIEWS

Hartland  
 BO717, BO817, BO917, B1017, B1117, B1217, B1307



# 2 BEDROOM APARTMENT

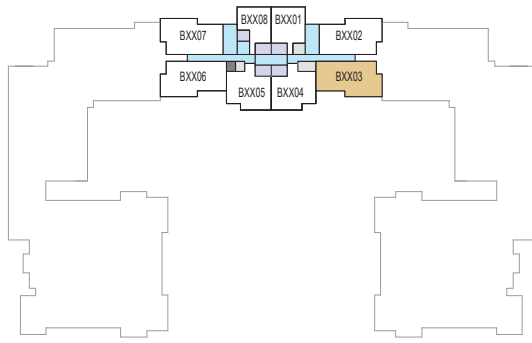
TYPE H (with Maid Room + Balcony)

## TOTAL SALEABLE AREA

SUITE = 1,254.75 SQ.FT.

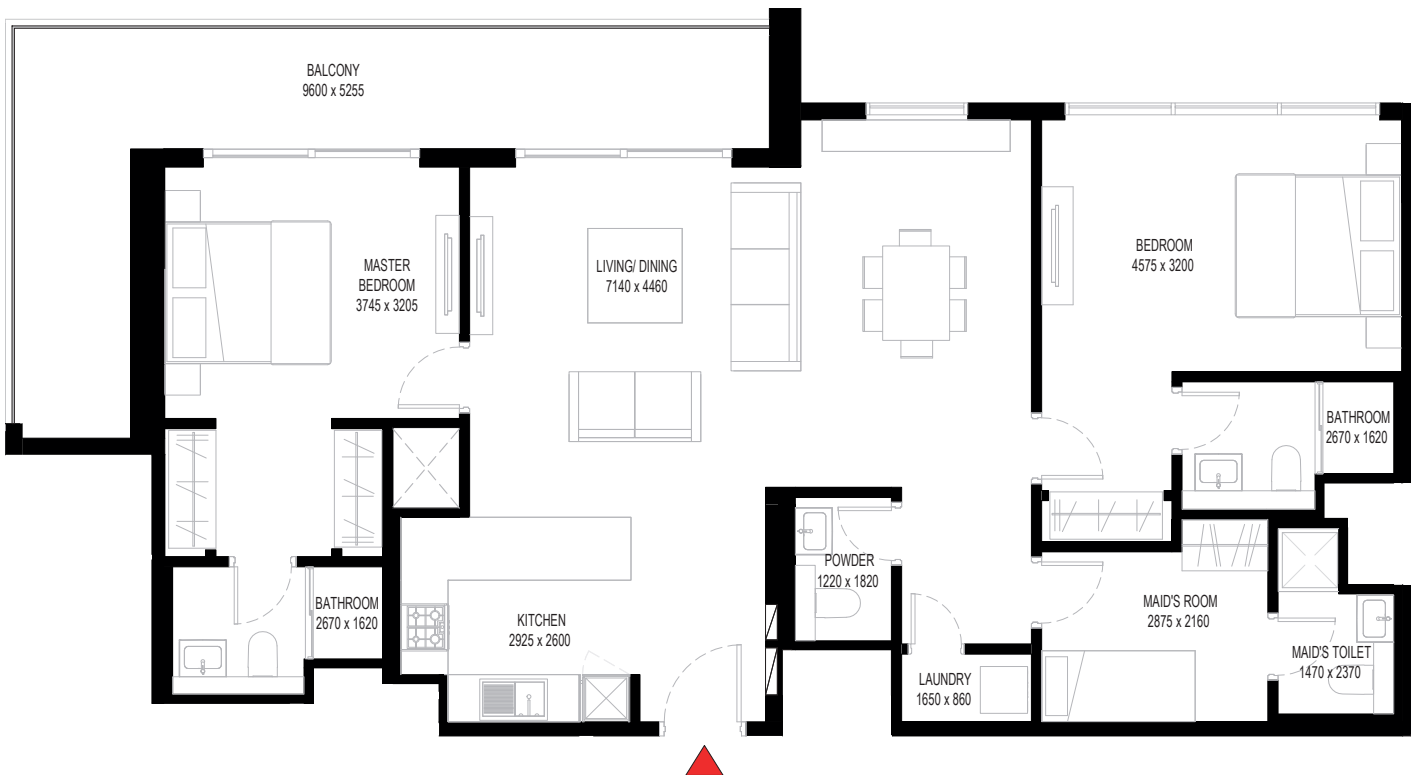
BALCONY = 237.56 SQ.FT.

TOTAL = 1,492.31 SQ.FT.



LEVEL 14-35

UNIT



List of unit numbers with this unit plan:

### VIEWS

Waterfront, Amenities, Ras Al Khor  
B1403

Waterfront, Amenities, Hartland, Ras Al Khor  
B1503

Waterfront, Hartland, Ras Al Khor  
B1603, B1703, B1803, B1903, B2003, B2103, B2203, B2303, B2403, B2503, B2603,  
B2703, B2803, B2903, B3003, B3103, B3203, B3303, B3403, B3503

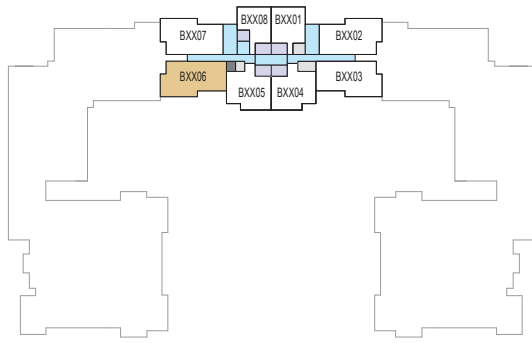


# 2 BEDROOM APARTMENT

TYPE H (with Maid Room + Balcony) - VARIANT 1

## TOTAL SALEABLE AREA

SUITE = 1,253.56 SQ.FT.  
BALCONY = 238.10 SQ.FT.  
TOTAL = 1,491.66 SQ.FT.



LEVEL 14-35

UNIT



List of unit numbers with this unit plan:

### VIEWS

Waterfront, Amenities  
B1406

Waterfront, Amenities, Hartland, Downtown  
B1506

Waterfront, Hartland, Downtown  
B1606, B1706, B1806, B1906, B2006, B2106, B2206, B2306, B2406

Waterfront, Hartland, Downtown, Burj Khalifa  
B2506, B2606, B2706, B2806, B2906, B3006, B3106, B3206, B3306, B3406, B3506



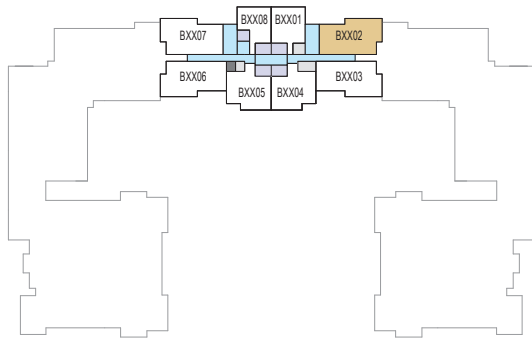


# 2 BEDROOM APARTMENT

TYPE I (with Maid Room + Balcony)

## TOTAL SALEABLE AREA

SUITE = 1,226.66 SQ.FT.  
BALCONY = 237.99 SQ.FT.  
TOTAL = 1,464.65 SQ.FT.



LEVEL 14-35

UNIT



List of unit numbers with this unit plan:

### VIEWS

Hartland, Ras Al Khor  
B1402

Hartland, Downtown, Ras Al Khor  
B1502, B1602, B1702, B1802, B1902, B2002, B2102, B2202, B2302, B2402

Hartland, Downtown, Burj Khalifa, Ras Al Khor  
B2502, B2602, B2702, B2802, B2902, B3002, B3102, B3202, B3302, B3402, B3502



# 2 BEDROOM APARTMENT

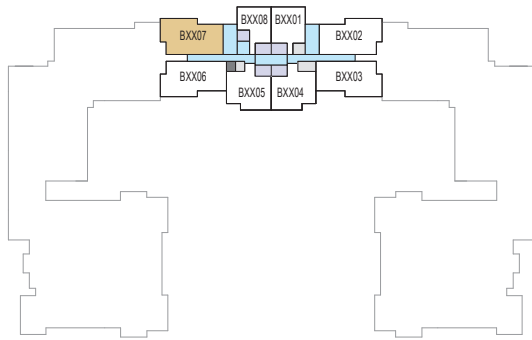
TYPE I (with Maid Room + Balcony) - VARIANT 1

## TOTAL SALEABLE AREA

SUITE = 1,226.66 SQ.FT.

BALCONY = 237.67 SQ.FT.

TOTAL = 1,464.33 SQ.FT.



LEVEL 14-35

UNIT



List of unit numbers with this unit plan:

### VIEWS

Hartland, Ras Al Khor  
B1407

Hartland, Downtown, Ras Al Khor  
B1507, B1607, B1707, B1807, B1907, B2007, B2107, B2207, B2307, B2407

Hartland, Downtown, Burj Khalifa, Ras Al Khor  
B2507, B2607, B2707, B2807, B2907, B3007, B3107, B3207, B3307, B3407, B3507

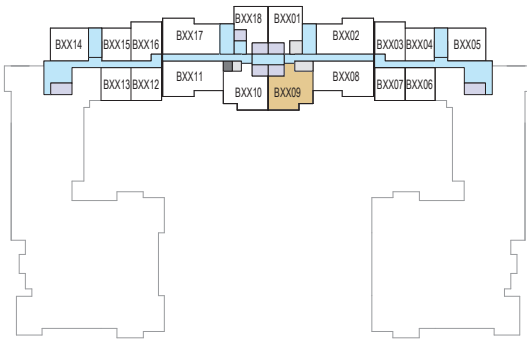


# 2 BEDROOM APARTMENT

TYPE O (with 2 Balconies)

**TOTAL SALEABLE AREA**

SUITE RANGE = 1,115.68 SQ.FT. - 1,115.89 SQ.FT.  
 BALCONY RANGE = 150.05 SQ.FT. - 150.37 SQ.FT.  
 TOTAL RANGE = 1,266.05 SQ.FT. - 1,265.94 SQ.FT.



LEVEL 07-12



LEVEL 13-35



UNIT



List of unit numbers with this unit plan:

## VIEWS

Waterfront, Amenities

B0709, B0809, B0909, B1009, B1109, B1209, B1304, B1404

Waterfront, Amenities, Hartland

B1504

Waterfront, Hartland

B1604, B1704, B1804, B1904, B2004, B2104, B2204, B2304, B2404, B2504, B2604, B2704, B2804, B2904, B3004, B3104, B3204, B3304, B3404, B3504



# 2 BEDROOM APARTMENT

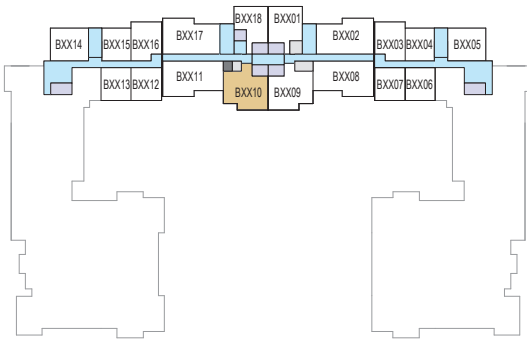
TYPE O (with 2 Balconies) - VARIANT 1

**TOTAL SALEABLE AREA**

SUITE RANGE = 1,120.52 SQ.FT. - 1,120.85 SQ.FT.

BALCONY RANGE = 150.37 SQ.FT. - 150.59 SQ.FT.

TOTAL = 1,271.11 SQ.FT. - 1,271.22 SQ.FT.



LEVEL 07-12



LEVEL 13-35



UNIT



List of unit numbers with this unit plan:

## VIEWS

Waterfront, Amenities

B0710, B0810, B0910, B1010, B1110, B1210, B1305, B1405

Waterfront, Amenities, Hartland

B1505

Waterfront, Hartland

B1605, B1705, B1805, B1905, B2005, B2105, B2205, B2305, B2405, B2505, B2605, B2705, B2805, B2905, B3005, B3105, B3205, B3305, B3405, B3505

