

A B
Cavalier



J V C

**Serene, Bold &
New**

A vision that challenges the status quo. In the heart of the urban context - comes a stunning new precedent for luxury Dubai living. A gorgeous harmony of urban chic and resort - inspired sophistication, envisioned for those who aspire to the highest realms of luxury, comfort and style

Urban Living

The definitive economic hub of the MENA region, Dubai draws the attention of the entire world. Its superior infrastructure and vibrant culture lends itself perfectly to hosting one of the major urban lifestyle.

Dubai is an urban wonderland with many of its communities like self-contained mini-cities within the bigger metropolis.



Lifestyle

AB Cavalier offers a serene lifestyle to its residents with a peaceful and relaxed environment. This includes features such as well-maintained grounds, tranquil common spaces, and an atmosphere that is conducive to rest and relaxation. A building full of amenities such as a swimming pool, fitness center, or meditation room to help residents stay relaxed and refreshed. It also has green spaces or community gardens where residents can enjoy the beauty of nature. By creating an environment that prioritizes relaxation and calm, a building with a serene lifestyle can help residents live a more balanced and fulfilling life.



Location

When you're at JVC, you're among the most vibrant urban context yet within 3kms from Downtown Dubai. destinations such as Mall of the Emirates, Dubai Hills Mall and Burj Khalifa district (Downtown) in close proximity and can be reached within 15-20 minutes.

Redefining the concept of city centre, AB Cavalier also provides easy access to Sheikh Mohammed Bin Zayed Road, which makes for delightful city connectivity.



AB Cavalier

AB Cavalier is an oasis in the city. This 11 storey, 162-unit mid-rise residential condominium in JVC introduces ZNera's well-honed residential design sensibilities to Dubai. The architecture seeks to manipulate notions of interior and exterior space by seamlessly weaving twelve private swimming pools with generously appointed living spaces, integrating the natural elements of water, fire and light with interiors of crafted luxury.



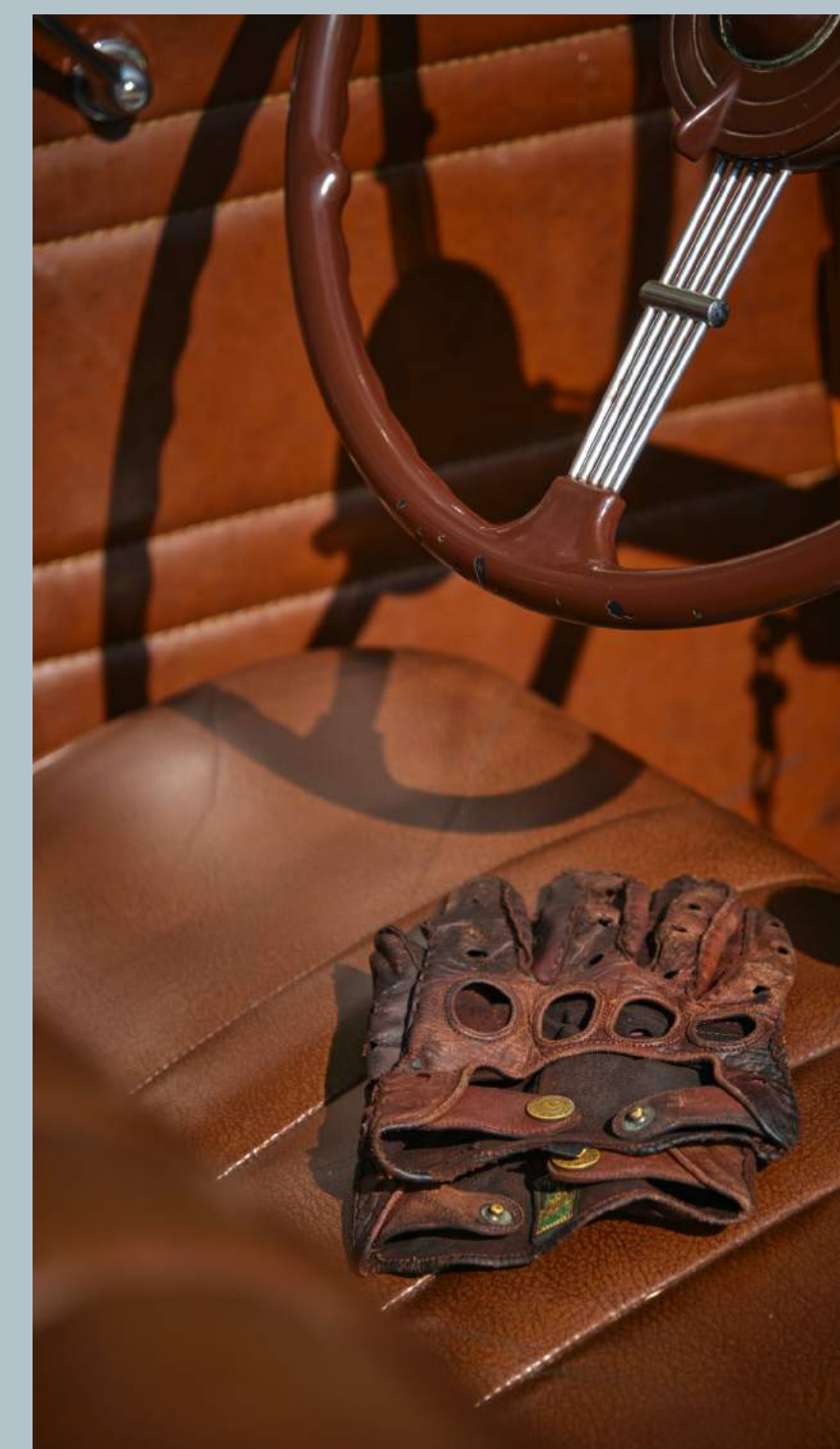
Natural Nordic Glam

The interior design is a minimal and clutter-free interior design style that emphasizes airy spaces, natural light, and clean lines.

Ab Cavalier has a lot to please interior design fans, starting with distinctively refined aesthetics and stunning architectural details.

The color scheme is inspired by nature, with beige, grey, brown, and tan shades.

There are also cognac leather and walnut elements in every room, which adds to the look's cohesiveness.



Divine Habitat

The Arrival experience is serene. The reception lobby provides access to the development's exclusive amenities such as concierge, clubhouse, gym etc. The reception dissolves the boundary between a formal entrance and a lounge aesthetics.





Austerity Redefined

While an intricate metal and glass facade filters light in and views out, soaring double-volume ceilings and architecturally-modulated interiors provide the perfect sanctuary for unique resort-style living in the heart of a bustling city.



A Serene Vibe

With its understated elegance, earthy colors and natural textures, the minimalist interior is warm and refined, with a serene quality.





A volumetric play

Visual connections on the interior are heightened by volumetric plays within multi-storey units, immersing inhabitants in an interplay of space, light and airiness.



Functional Aesthetics

The feeling of a clean and warm design, that focuses on contrasts, whites, naturals, and black will make everyone feel relaxed and comfortable.



Minimalist contemporary

A functional contemporary kitchen has been designed to meet the needs of modern lifestyles, while also incorporating modern design elements. The kitchen features sleek, clean lines, and a neutral color palette, often with a minimalist aesthetic.



Amenities

- 01 Indoor kid's play area
- 02 Steam / Sauna
- 03 Gym
- 04 Swimming Pool
- 05 Jacuzzi
- 06 Commercial Area
- 07 Clubhouse
- 08 Outdoor Yoga Studio
- 09 Outdoor Gym
- 10 Meeting rooms







The architecture

The façade is composed of glazing framed by light composite bronze trimmed with aluminium, giving it a natural yet clearly structured look.

This is carried over to the interiors, which employ a luminous colour scheme and feature subtle inclusions of wood in its many forms: it can be found in the white oak floors, textured brushed-cypress feature wall, and walnut wardrobe cabinets.



The architecture

From the initial approach of splitting of the building mass into two towers through to the use of planar shifts in the façade, the design aims to break down the built impact of high-density mid-rise buildings and create identity and purity in an increasingly crowded urban setting.



The architecture

The design uses a volumetric composition of mid-rise tower crating slender masses which complements each other through material and composition.



The architecture

The adoption of a pure clean form with subtle geometric shifts creates distinctive and bold gestures that blend both architecture and the urban context. Having pool at private terraces accentuate the luxury quotient embedded in this project



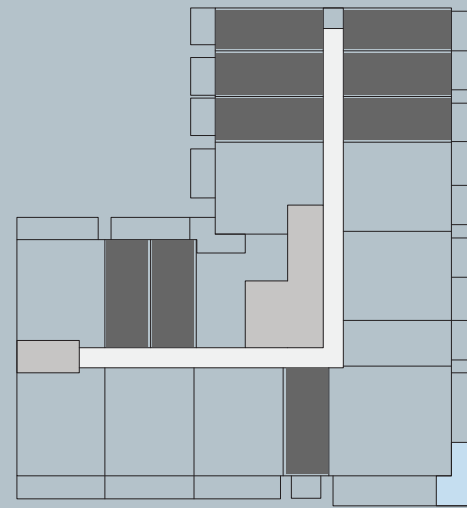
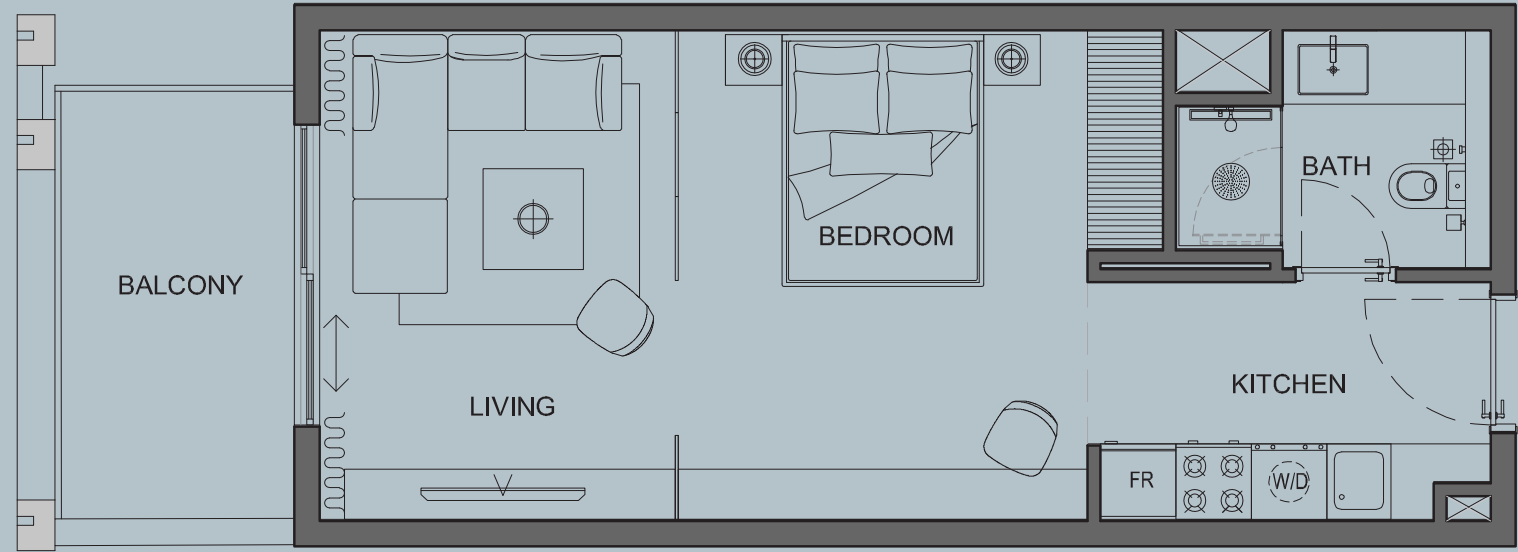
Studio

Typical Unit

1

Area

- Residence 38.50 sq. m.
- Terrace 06.55 sq. m.
- Total 45.05 sq. m.



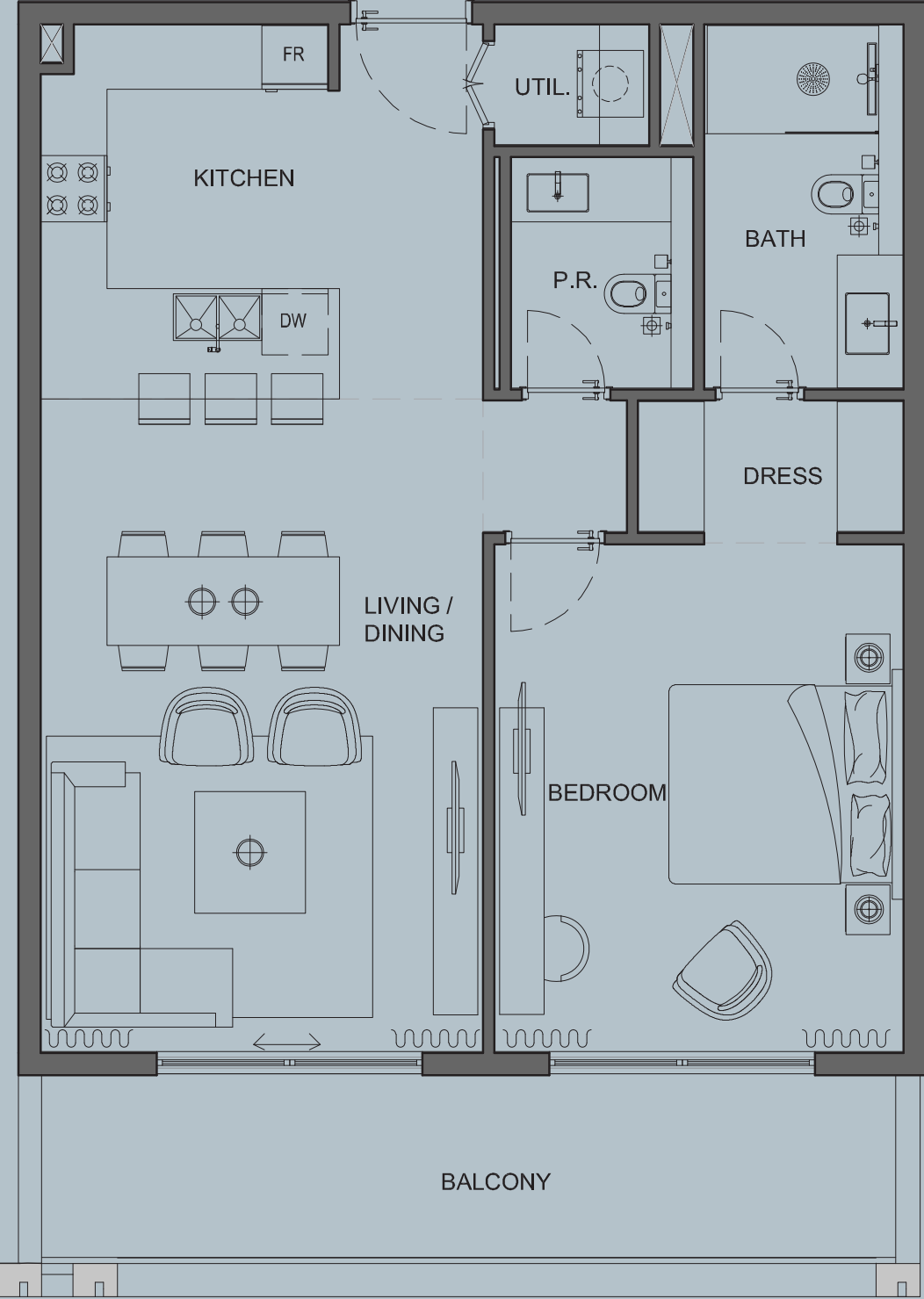
1Bed

Typical Unit

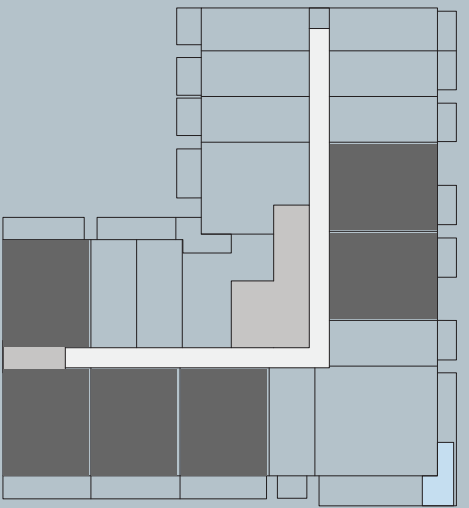
2

Area

- Residence 76.00 sq. m.
- Terrace 13.25 sq. m.
- Total 89.25 sq. m.



1 BED



1Bed

Typical
Unit 2

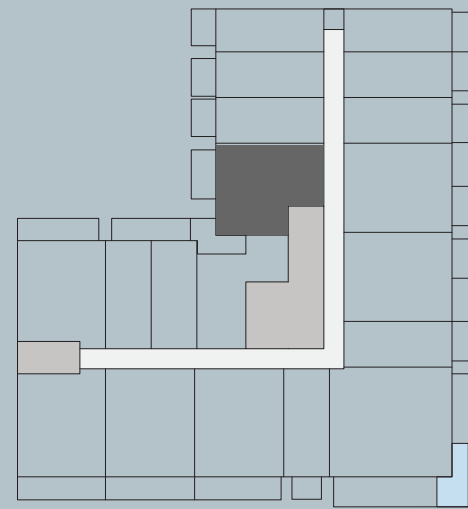
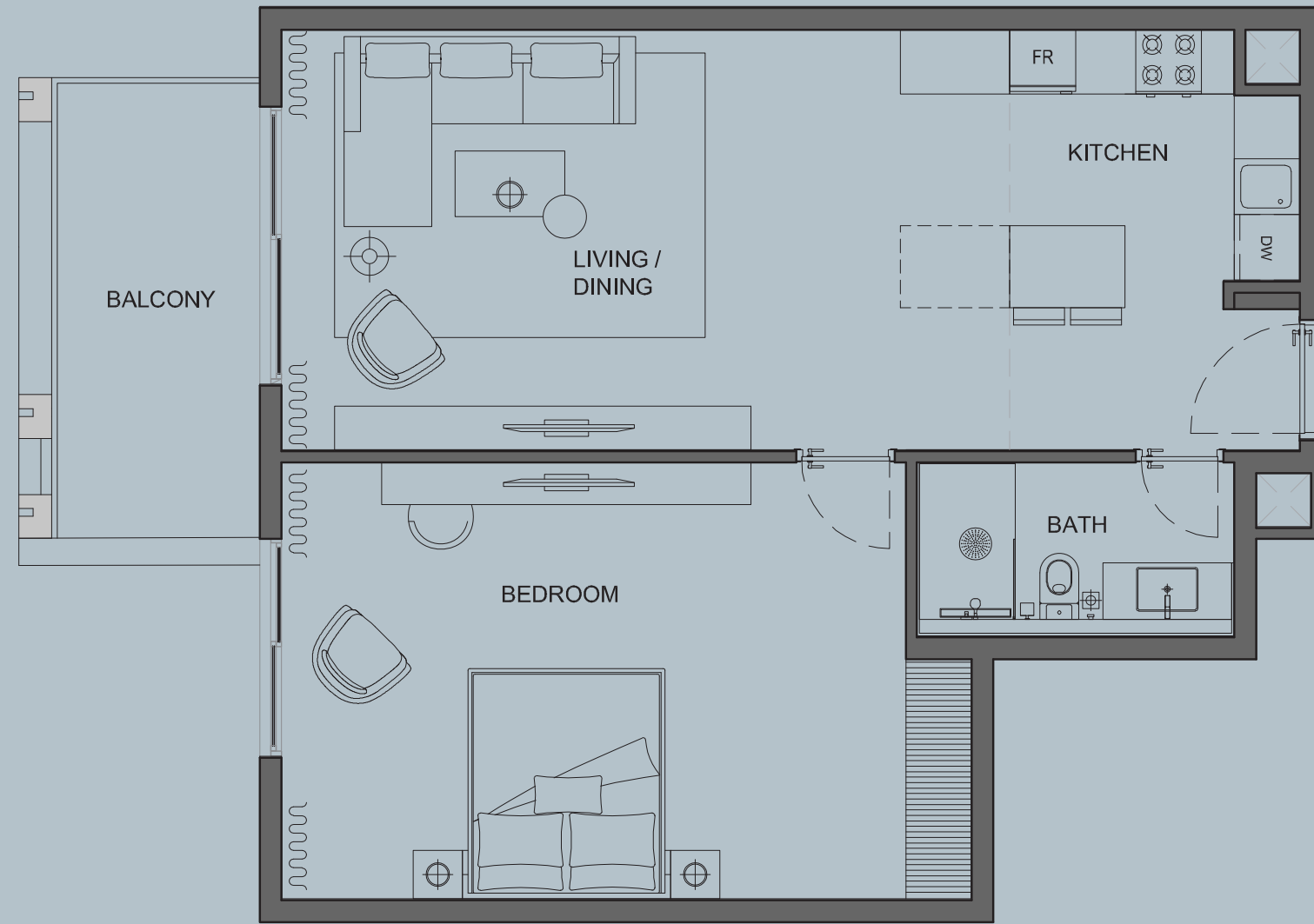
3

Area

Residence 69.50 sq. m.

Terrace 08.00 sq. m.

Total 77.50 sq. m.



1Bed

Typical
Unit 3

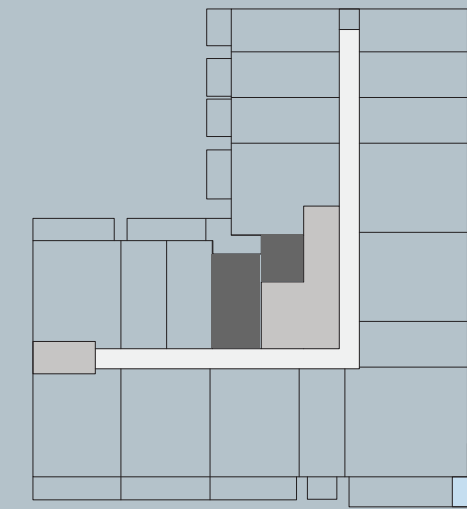
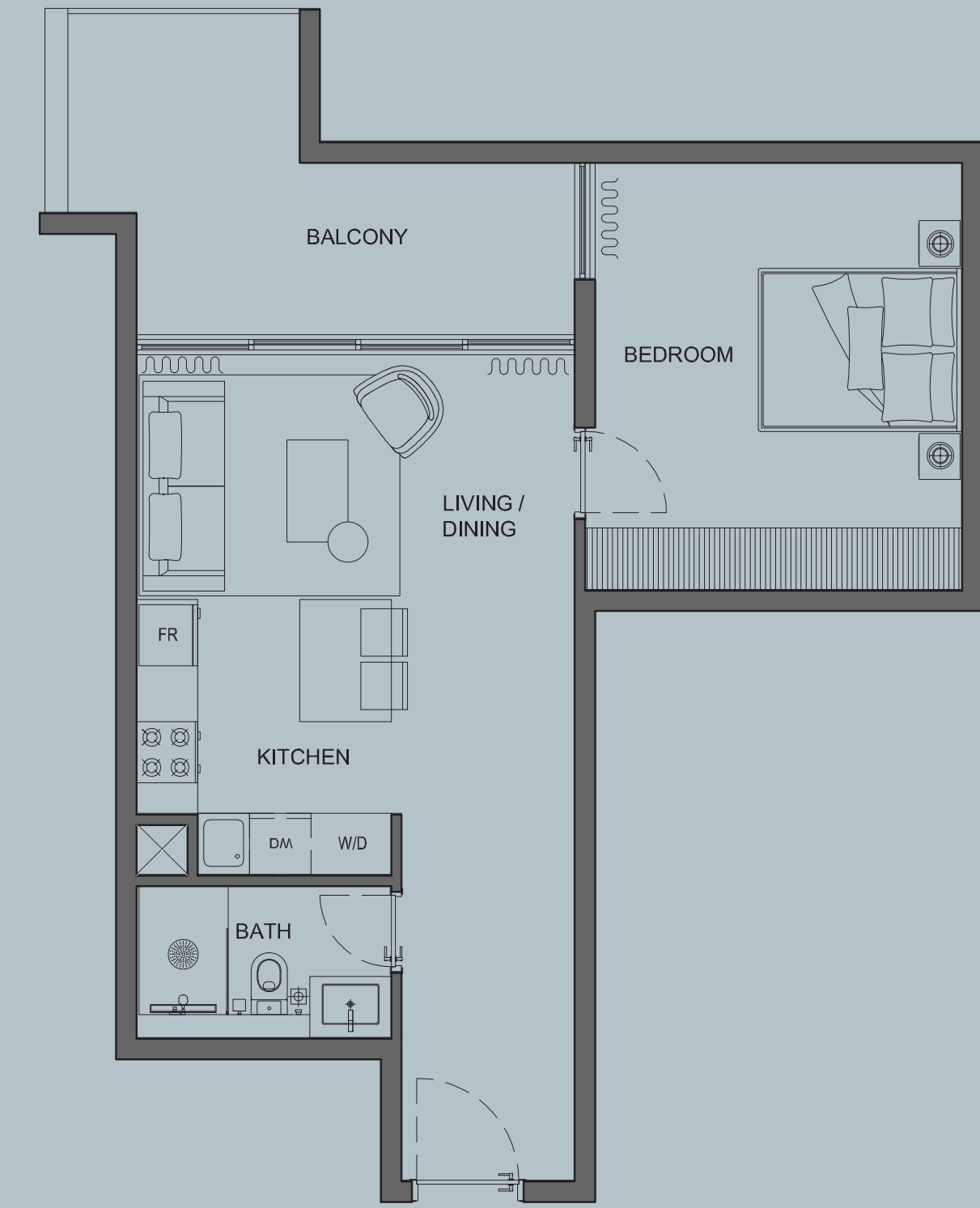
4

Area

Residence 51.30 sq. m.

Terrace 11.06 sq. m.

Total 62.36 sq. m.



1Bed

Typical
Unit 5

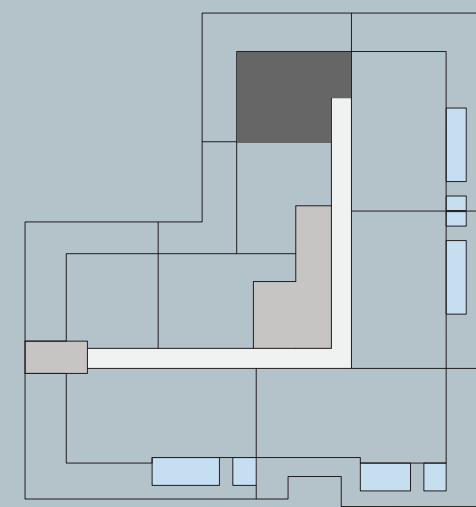
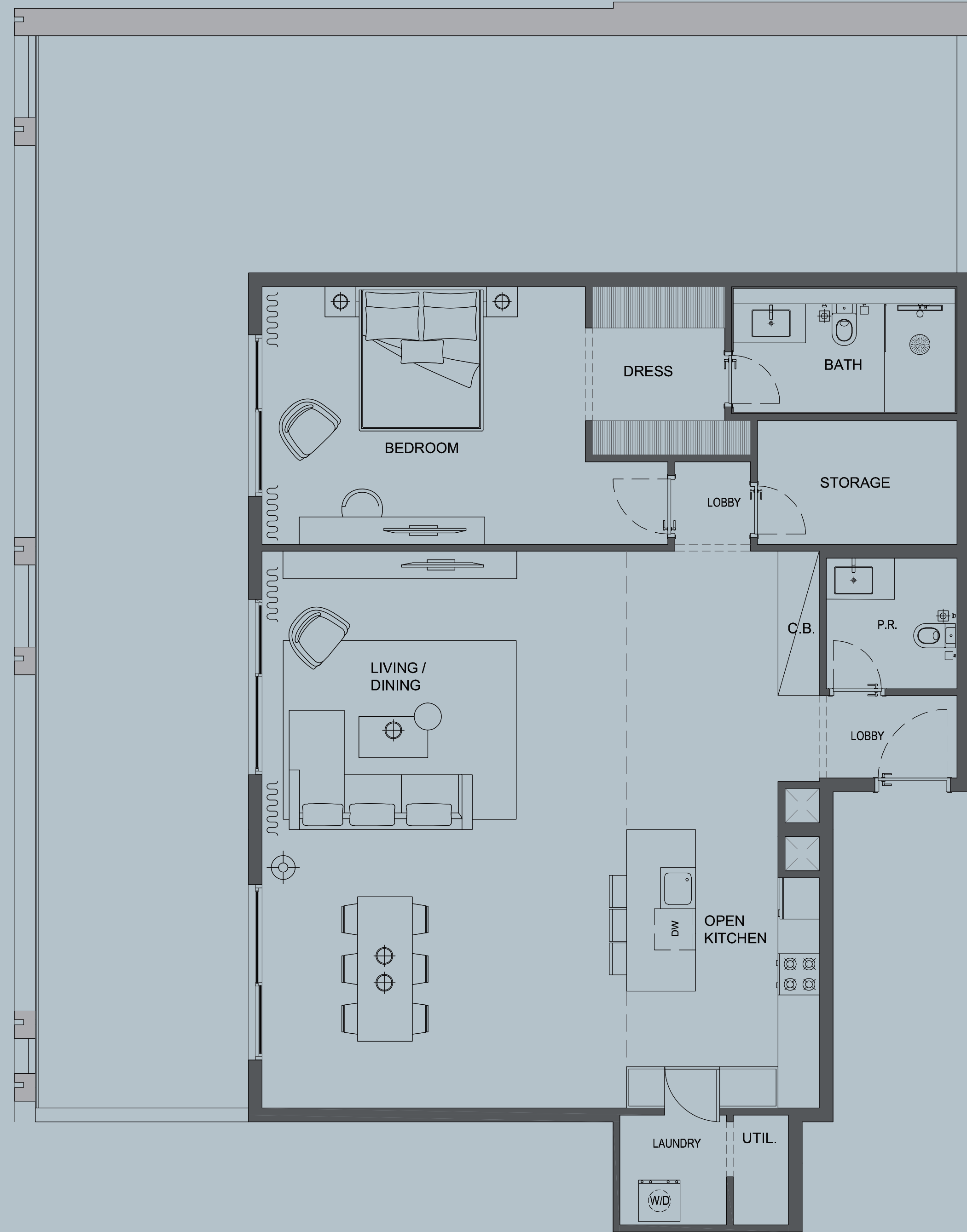
5

Area

Residence 121.60 sq. m.

Terrace 83.90 sq. m.

Total 205.50 sq. m.



2Bed

Typical
Unit

6

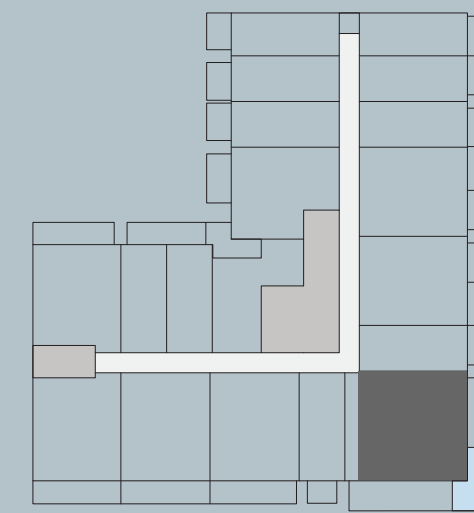
Area

Residence 107.86 sq. m.

Terrace 40.05 sq. m.

Pool 09.40 sq. m.

Total 157.76 sq. m.



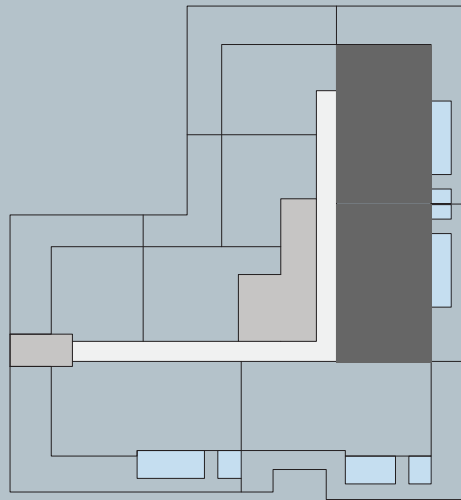
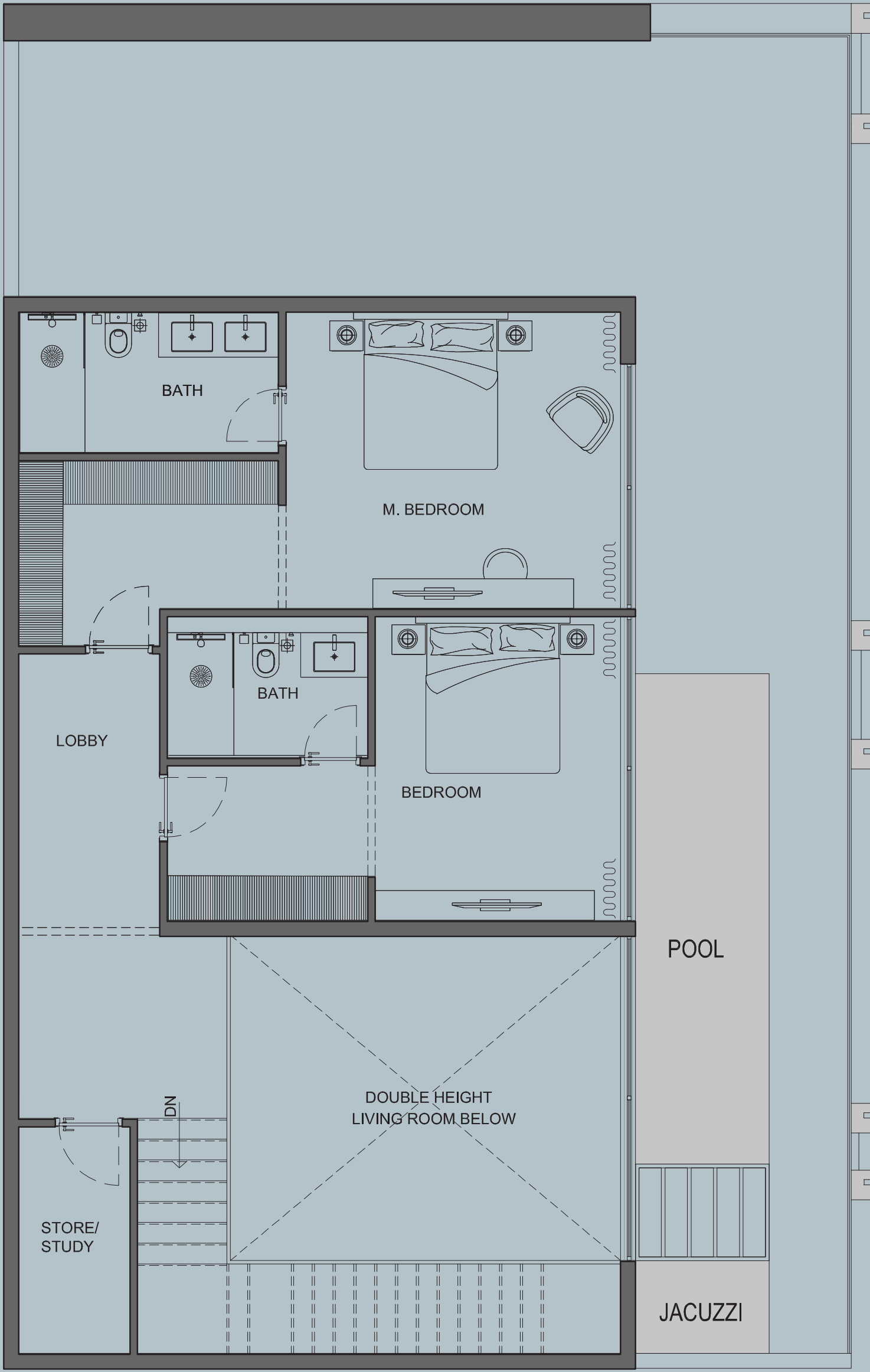
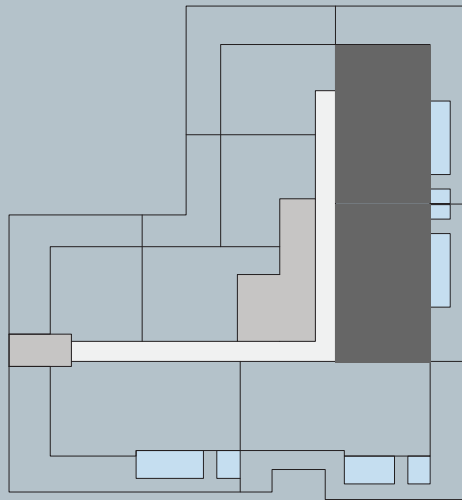
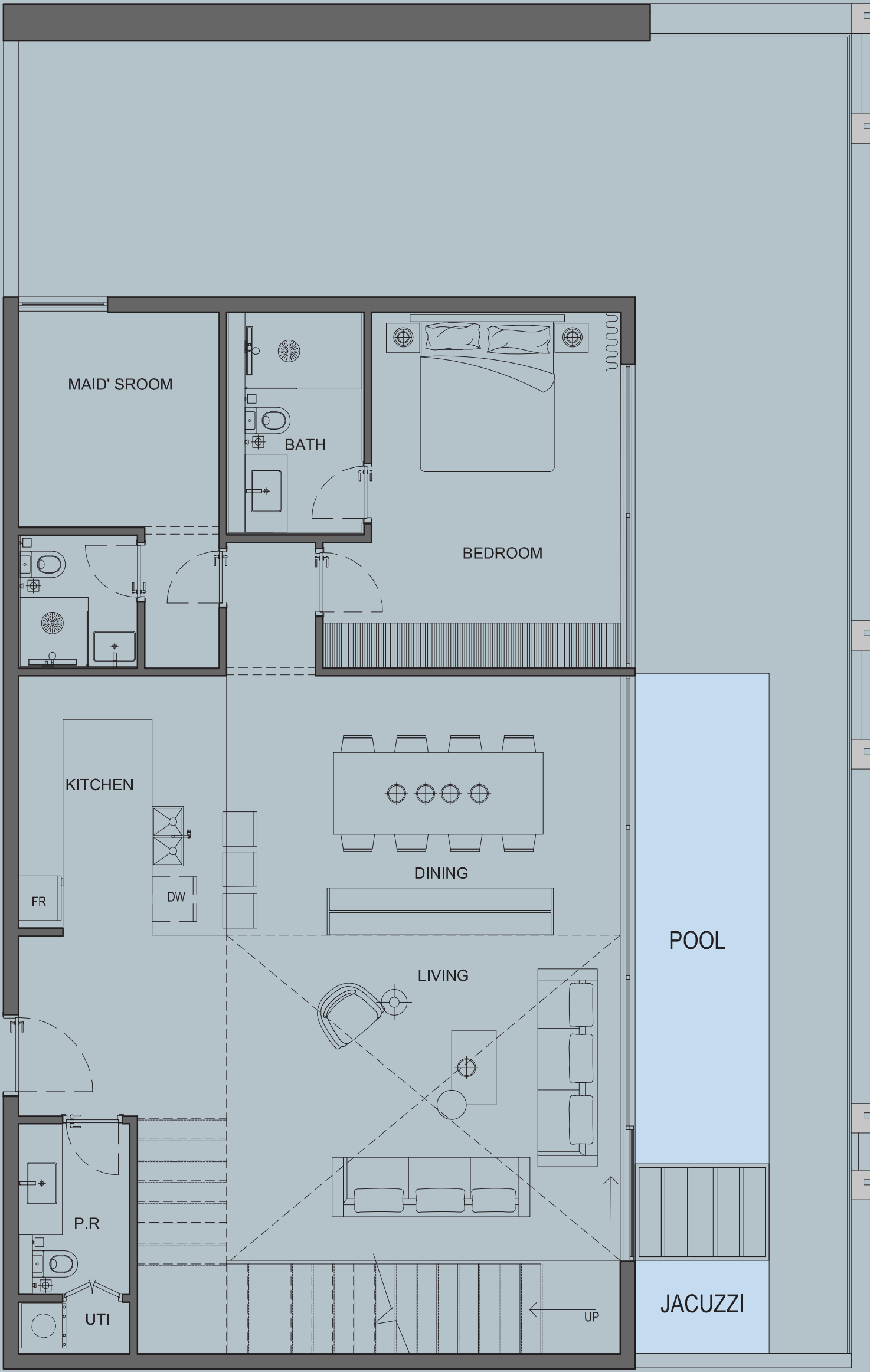
Duplex 3 Bed

Typical Unit 1

7

Area

Residence	120.30 + 96.50 sq. m.
Terrace	63.75 sq. m.
Pool & Jacuzzi	16.80 sq. m.
Total	297.35 sq. m.



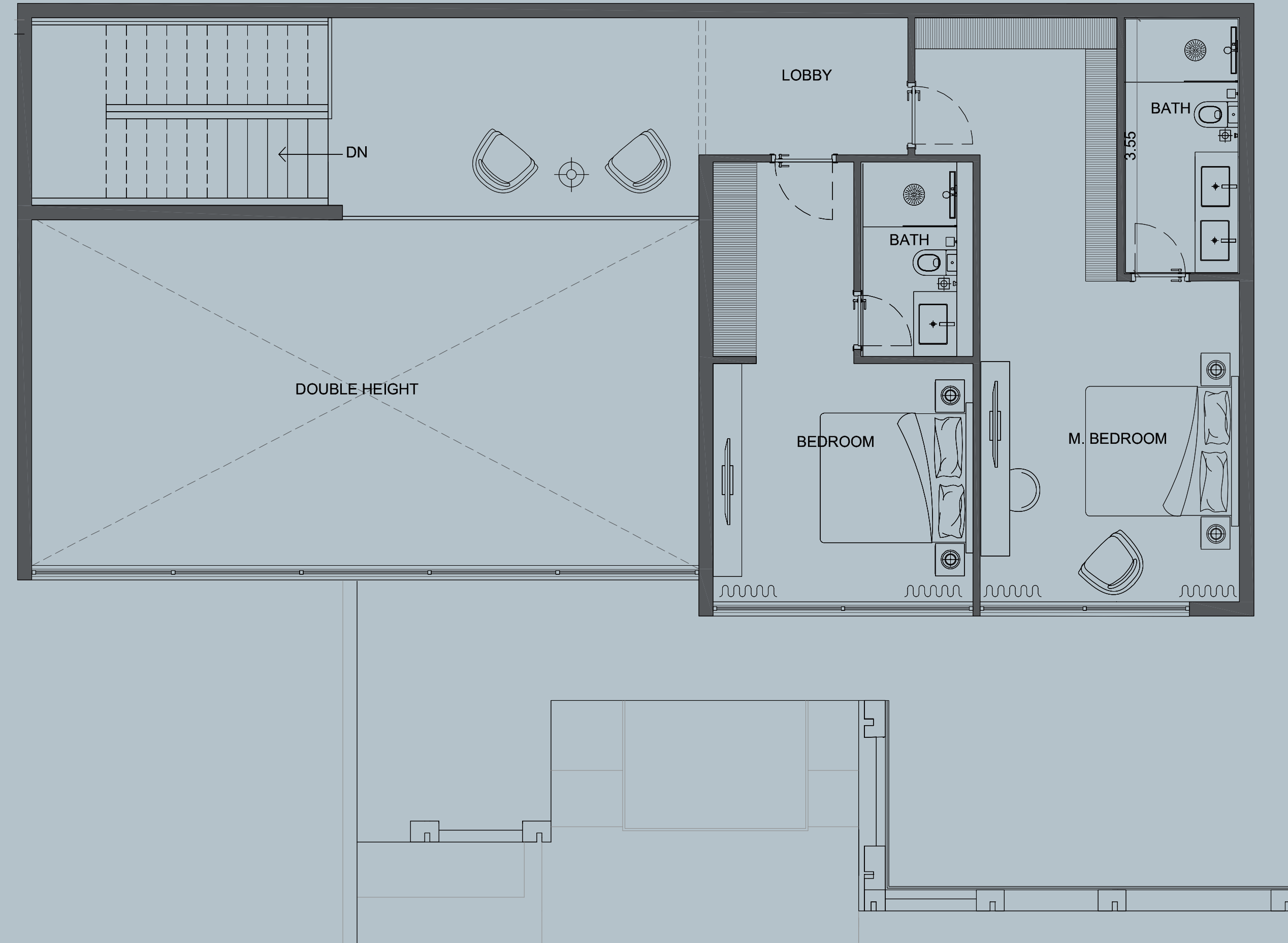
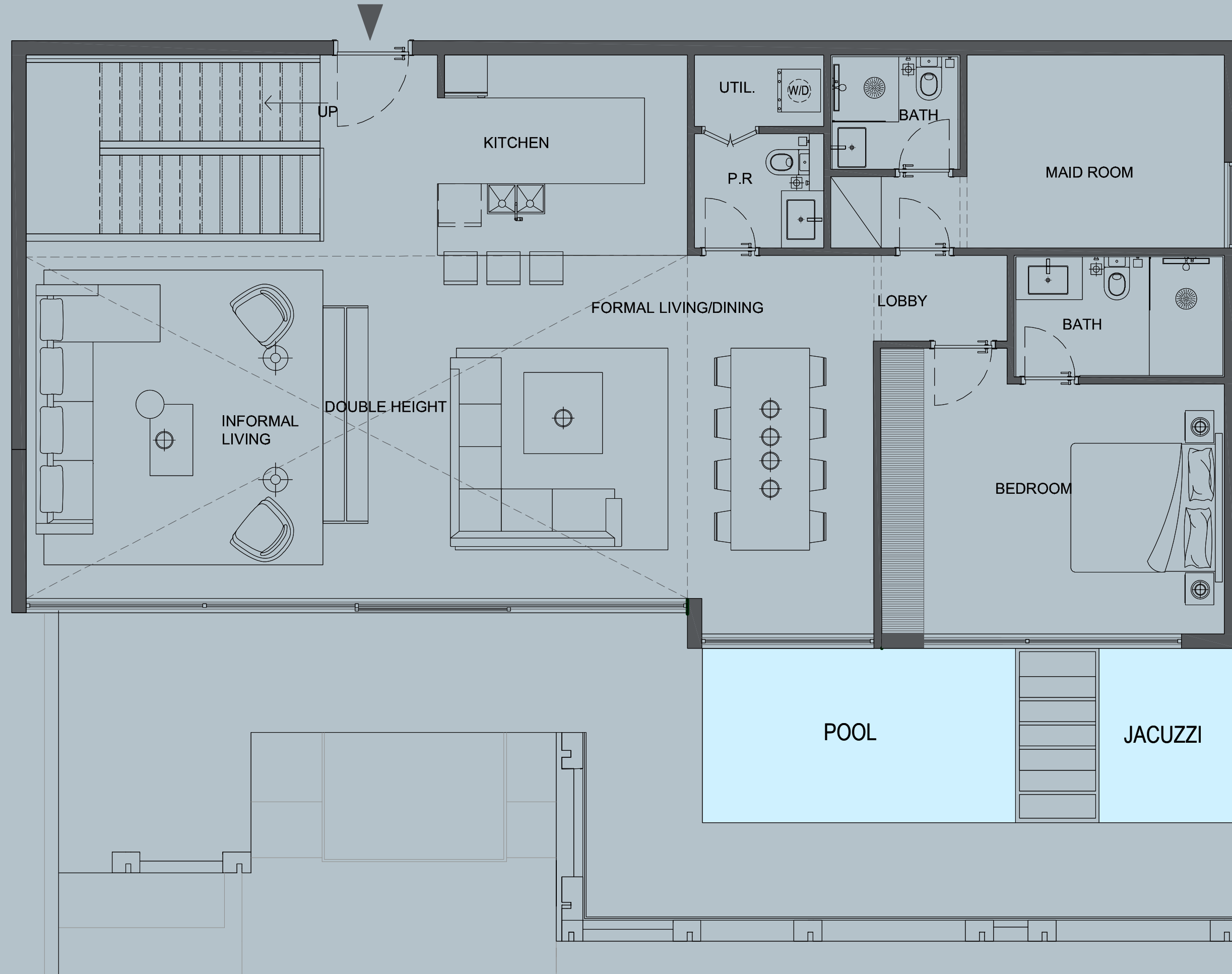
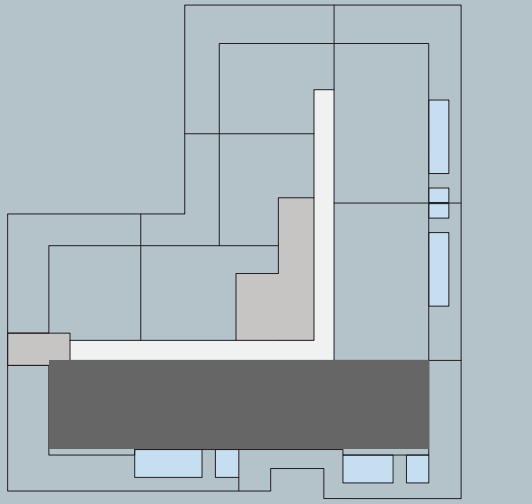
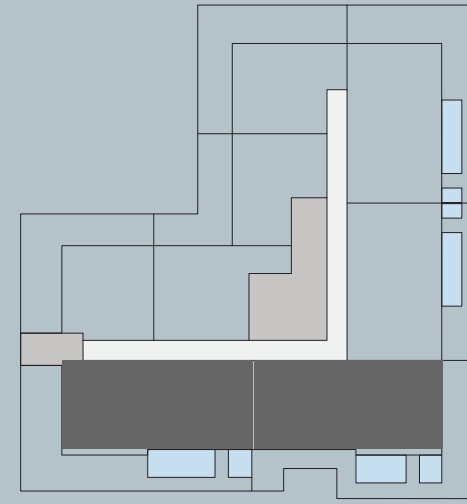
Duplex 3Bed

Typical Unit 2



Area

Residence	138.50 + 91.20 sq. m.
Terrace	71.50 sq. m.
Pool & Jacuzzi	19.28 sq. m.
Total	320.48 sq. m.





AB Developers

Over 2 decades of passion for craftsmanship and excellence have come together to deliver a living experience that the real estate world has rarely seen.

Whether its leading residential and commercial projects in India, design ventures for Middle Eastern royalties or developing a freehold community in the centre of Dubai.



A B
Cavalier



J V C