

BARAJEEL TOWERS

www.barajeeltowers.ae



جي جا العقارية
PROPERTIES



BARAJEEL

TOWERS

ABOUT AJMAN

Ajman, the smallest yet most diverse of all emirates, strategically lies in the heart of UAE. It borders Sharjah and is approximately only minutes to Ras Al Khaimah. Hence, it provides easy commute to Dubai and to other emirates.

ABOUT BARAJEEL TOWERS

Discover a unique residential experience at Barajeel Towers. Located in Ajman's vibrant downtown, these contemporary apartments boast stunning views of the city skyline and the serene Ajman Creek. With exquisite finishes and a prime location, Barajeel Towers offers a bespoke lifestyle for discerning residents.

AMENITIES

- Fully equipped gym:
Modern equipment and multiple workout areas
- Security:
24-hour security staff on site
- Nearby Amenities
Shopping: Markets and shopping centers within reach
- Education:
Nearby schools and universities
- Recreation:
Parks, recreation centers, and restaurants nearby



CONNECTIVITY



20 min

to Sharjah
International Airport

إلى مطار
الشارقة الدولي



10 min

to Ajman
City Centre

إلى سيتي
سنتر عجمان



30 min

to Dubai
International Airport

إلى مطار
دبي الدولي



10 min

to Ajman
Corniche

إلى كورنيش
عجمان



5 min

to Ajman
Free Zone

إلى المنطقة
الحرّة في عجمان



8 min

to Ajman
Museum

إلى متحف
عجمان



15 min

to Ajman
University

إلى جامعة
عجمان



15 min

to Ajman
Mangroves

إلى منغروف
عجمان

FIRST FLOOR PLAN
TOWER A&B

BARAJEEL TOWERS

FIRST FLOOR PLAN
TOWER A&B

ONE BEDROOM



TWO BEDROOM

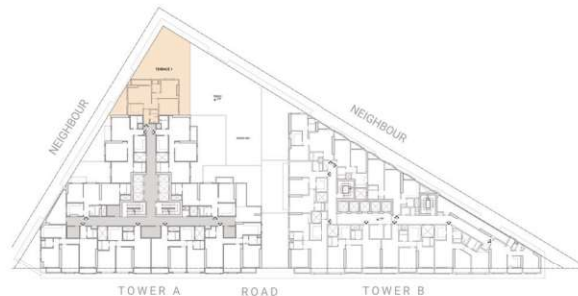


BARAJEEL TOWERS



Disclaimer:

1. All materials, finishes, dimensions and drawings are approximate.
2. Information is subject to change without notice.
3. Actual suite area may vary from the stated area.
4. Drawings are not to scale.
5. The Developer reserves the right to make revisions /alterations without any liability whatsoever.



TOWER A UNIT 01

Apartment:
2 Bedroom

Total Area:
4437.43 SQ.FT.
412.25 SQ.M.

BARAJEEL TOWERS



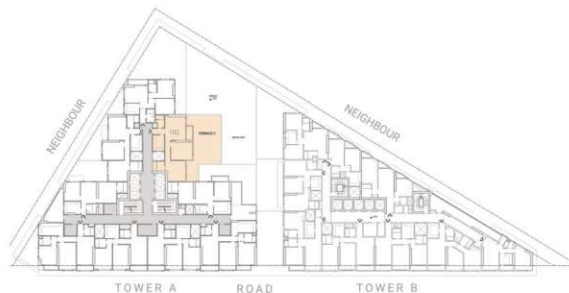
TOWER A UNIT 02

Apartment:
2 Bedroom

Total Area:
3268.02 SQ.FT.
303.61 SQ.M.

Disclaimer:

1. All materials, finishes, dimensions and drawings are approximate.
2. Information is subject to change without notice.
3. Actual suite area may vary from the stated area.
4. Drawings are not to scale.
5. The Developer reserves the right to make revisions /alterations without any liability whatsoever.



BARAJEEL TOWERS



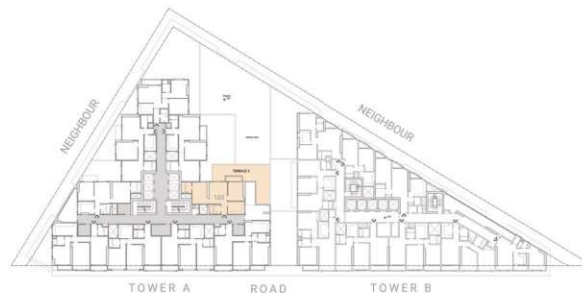
TOWER A UNIT 03

Apartment:
2 Bedroom

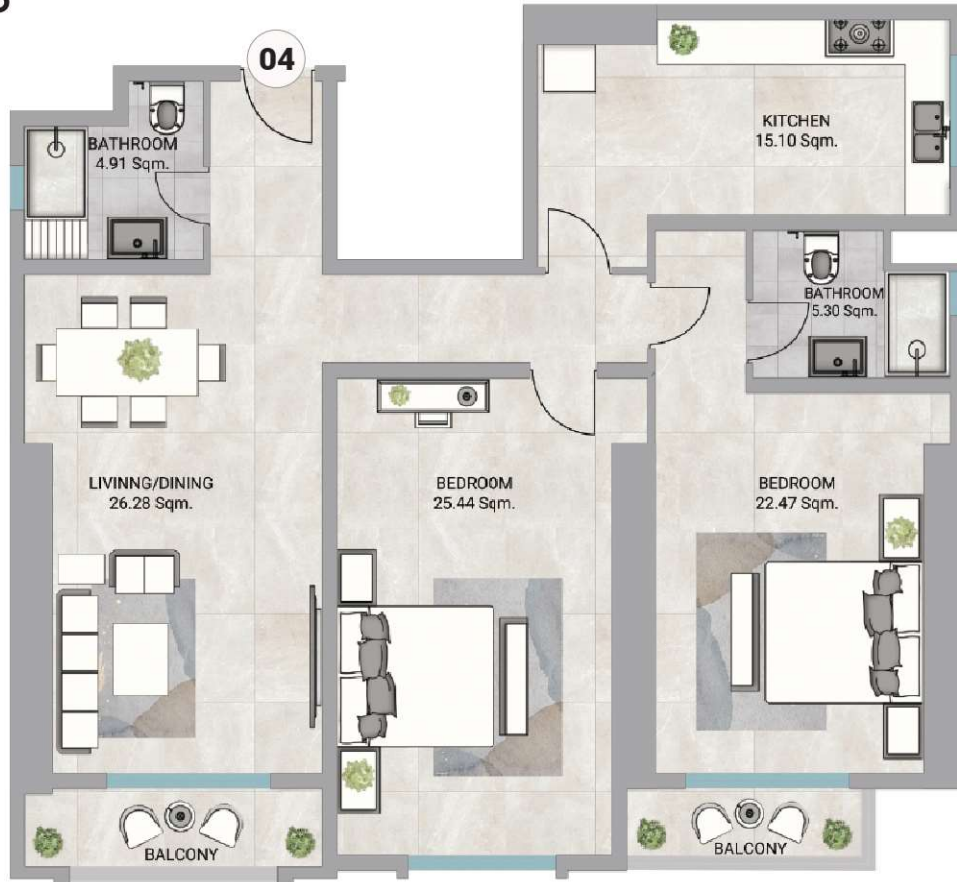
Total Area:
2493.80 SQ.FT.
231.68 SQ.M.

Disclaimer:

1. All materials, finishes, dimensions and drawings are approximate.
2. Information is subject to change without notice.
3. Actual suite area may vary from the stated area.
4. Drawings are not to scale.
5. The Developer reserves the right to make revisions /alterations without any liability whatsoever.



BARAJEEL TOWERS



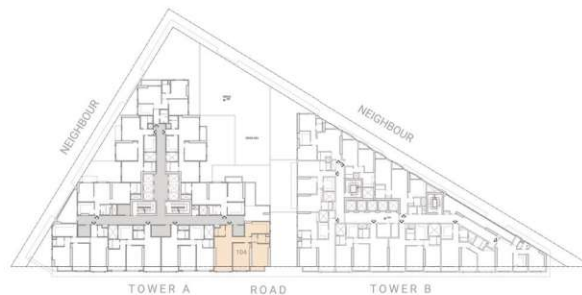
TOWER A UNIT 04

Apartment:
2 Bedroom

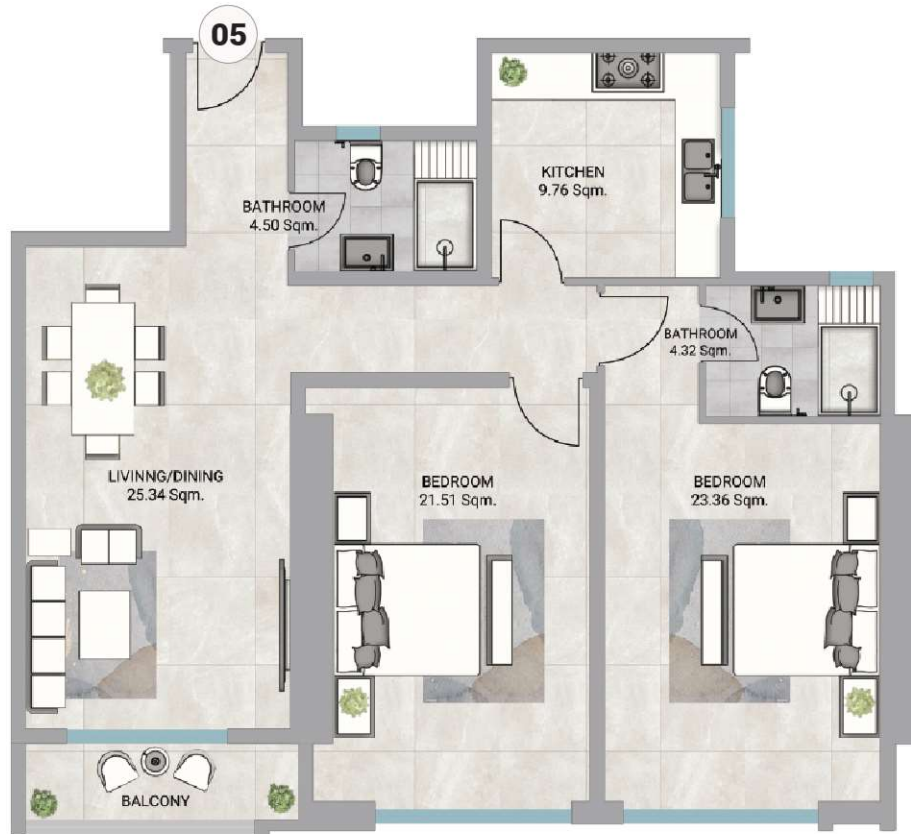
Total Area:
2146.82 SQ.FT.
199.45 SQ.M.

Disclaimer:

1. All materials, finishes, dimensions and drawings are approximate.
2. Information is subject to change without notice.
3. Actual suite area may vary from the stated area.
4. Drawings are not to scale.
5. The Developer reserves the right to make revisions /alterations without any liability whatsoever.



BARAJEEL TOWERS



TOWER A UNIT 05

Apartment:
2 Bedroom

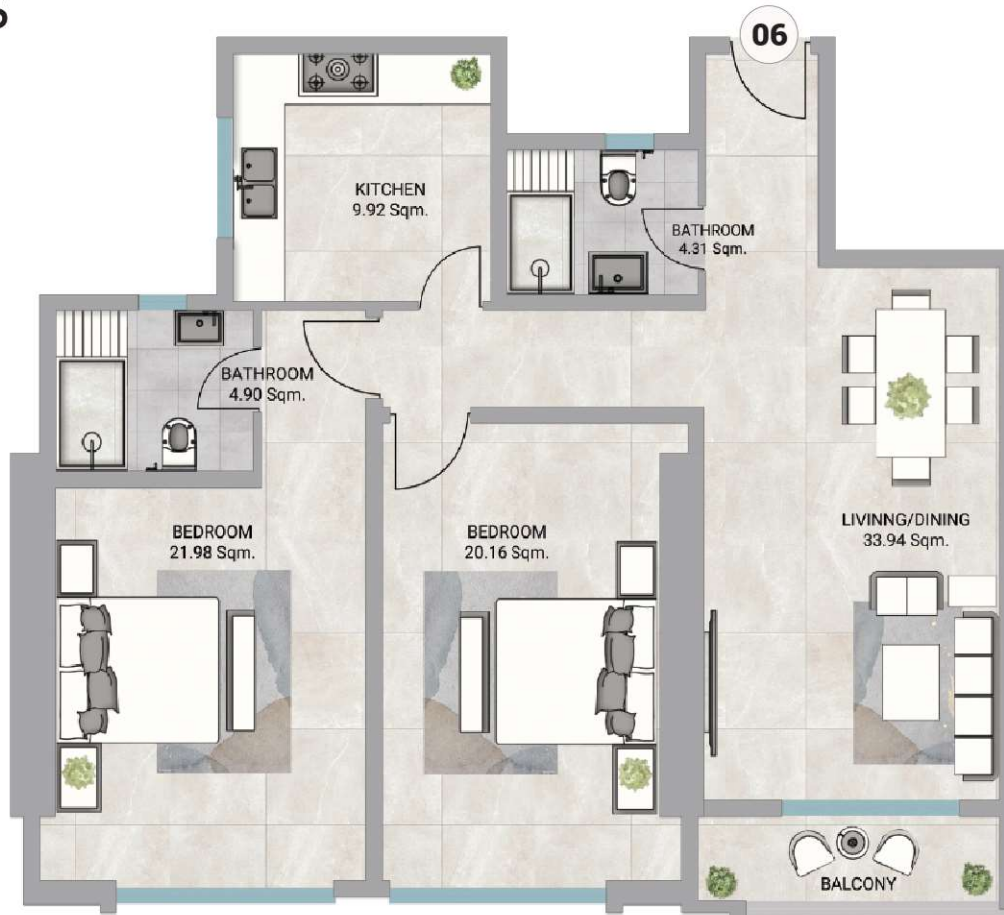
Total Area:
1858.22 SQ.FT.
172.63 SQ.M.

Disclaimer:

1. All materials, finishes, dimensions and drawings are approximate.
2. Information is subject to change without notice.
3. Actual suite area may vary from the stated area.
4. Drawings are not to scale.
5. The Developer reserves the right to make revisions /alterations without any liability whatsoever.



BARAJEEL TOWERS



TOWER A UNIT 06

Apartment:
2 Bedroom

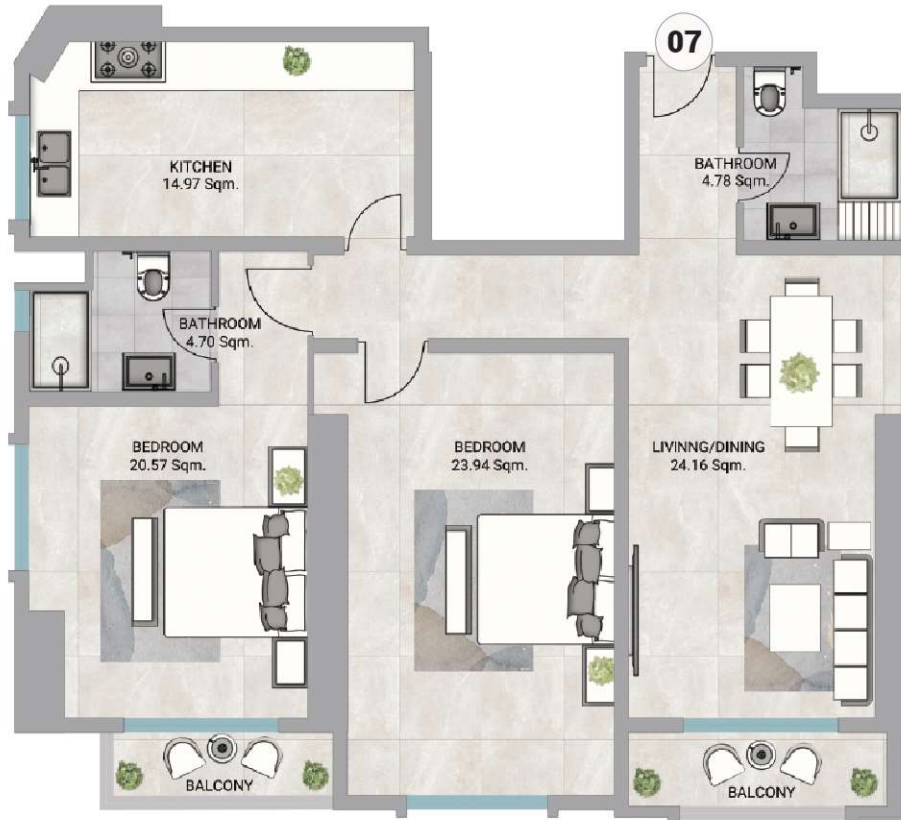
Total Area:
1861.72 SQ.FT.
172.96 SQ.M.

Disclaimer:

1. All materials, finishes, dimensions and drawings are approximate.
2. Information is subject to change without notice.
3. Actual suite area may vary from the stated area.
4. Drawings are not to scale.
5. The Developer reserves the right to make revisions /alterations without any liability whatsoever.



BARAJEEL TOWERS



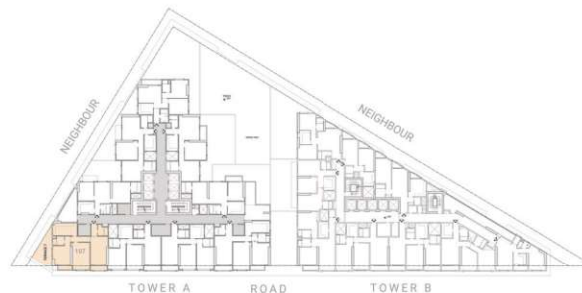
TOWER A UNIT 07

Apartment:
2 Bedroom

Total Area:
2739.36 SQ.FT.
254.50 SQ.M.

Disclaimer:

1. All materials, finishes, dimensions and drawings are approximate.
2. Information is subject to change without notice.
3. Actual suite area may vary from the stated area.
4. Drawings are not to scale.
5. The Developer reserves the right to make revisions /alterations without any liability whatsoever.



BARAJEEL TOWERS



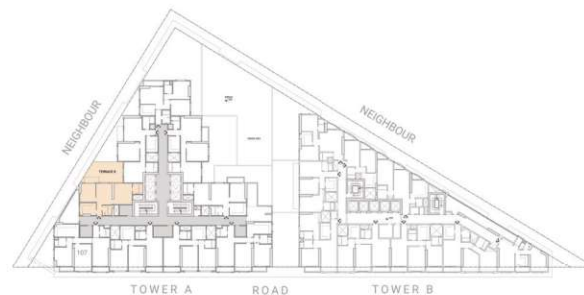
TOWER A UNIT 08

Apartment:
2 Bedroom

Total Area:
2119.12 SQ.FT.
196.87 SQ.M.

Disclaimer:

1. All materials, finishes, dimensions and drawings are approximate.
2. Information is subject to change without notice.
3. Actual suite area may vary from the stated area.
4. Drawings are not to scale.
5. The Developer reserves the right to make revisions /alterations without any liability whatsoever.



BARAJEEL TOWERS



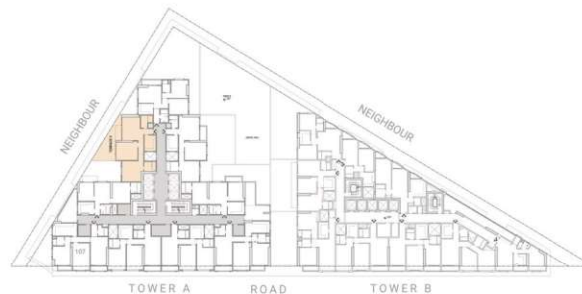
TOWER A UNIT 09

Apartment:
2 Bedroom

Total Area:
2543.18 SQ.FT.
236.27 SQ.M.

Disclaimer:

1. All materials, finishes, dimensions and drawings are approximate.
2. Information is subject to change without notice.
3. Actual suite area may vary from the stated area.
4. Drawings are not to scale.
5. The Developer reserves the right to make revisions /alterations without any liability whatsoever.



BARAJEEL TOWERS



TOWER B
UNIT 01

Apartment:
2 Bedroom

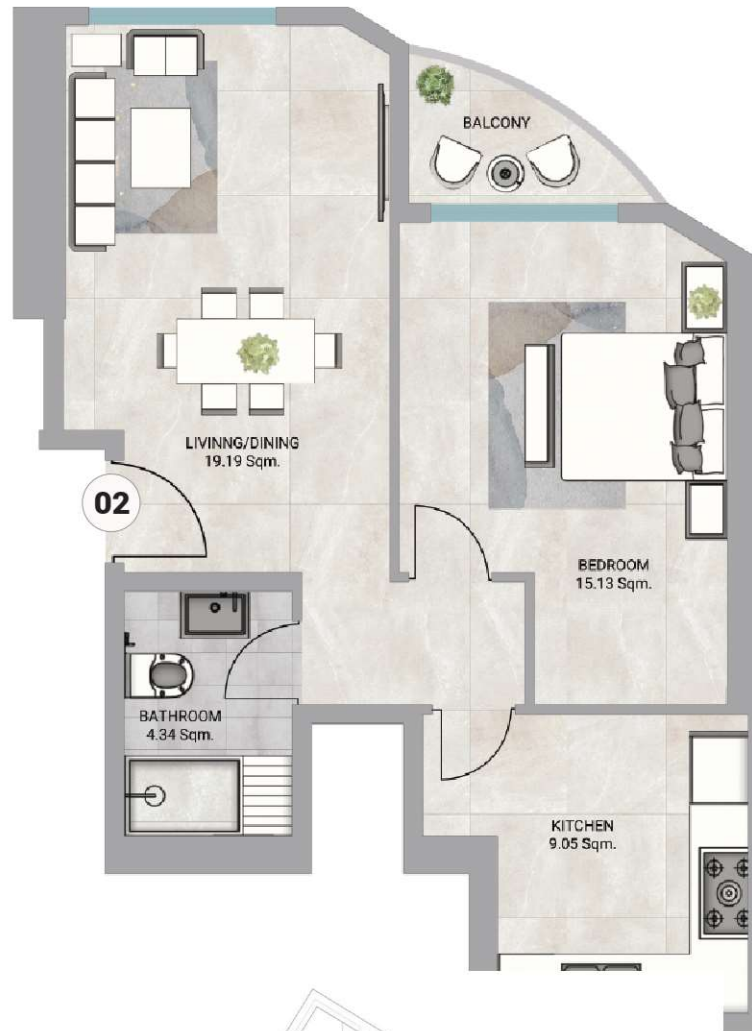
Total Area:
3388.80 SQ.FT.
314.83 SQ.M.

Disclaimer:

1. All materials, finishes, dimensions and drawings are approximate.
2. Information is subject to change without notice.
3. Actual suite area may vary from the stated area.
4. Drawings are not to scale.
5. The Developer reserves the right to make revisions /alterations without any liability whatsoever.



BARAJEEL TOWERS



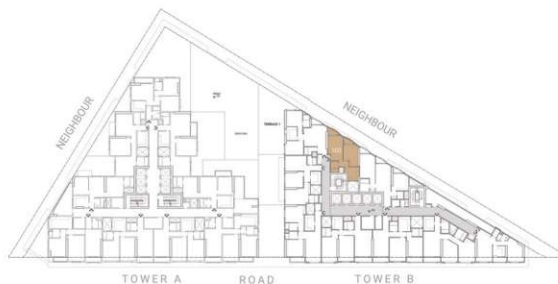
TOWER B UNIT 02

Apartment:
1 Bedroom

Total Area:
1801.00 SQ.FT.
101.20 SQ.M.

Disclaimer:

1. All materials, finishes, dimensions and drawings are approximate.
2. Information is subject to change without notice.
3. Actual suite area may vary from the stated area.
4. Drawings are not to scale.
5. The Developer reserves the right to make revisions /alterations without any liability whatsoever.



BARAJEEL TOWERS



TOWER B UNIT 03

Apartment:
1 Bedroom

Total Area:
1586.80 SQ.FT.
147.42 SQ.M.

Disclaimer:

1. All materials, finishes, dimensions and drawings are approximate.
2. Information is subject to change without notice.
3. Actual suite area may vary from the stated area.
4. Drawings are not to scale.
5. The Developer reserves the right to make revisions /alterations without any liability whatsoever.



BARAJEEL TOWERS



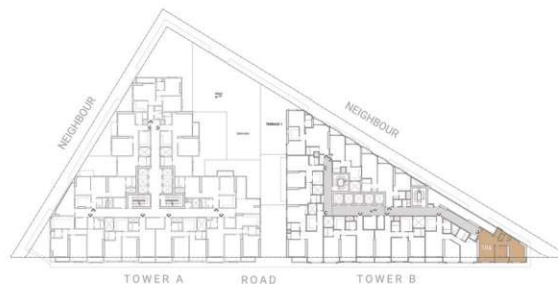
TOWER B UNIT 04

Apartment:
1 Bedroom

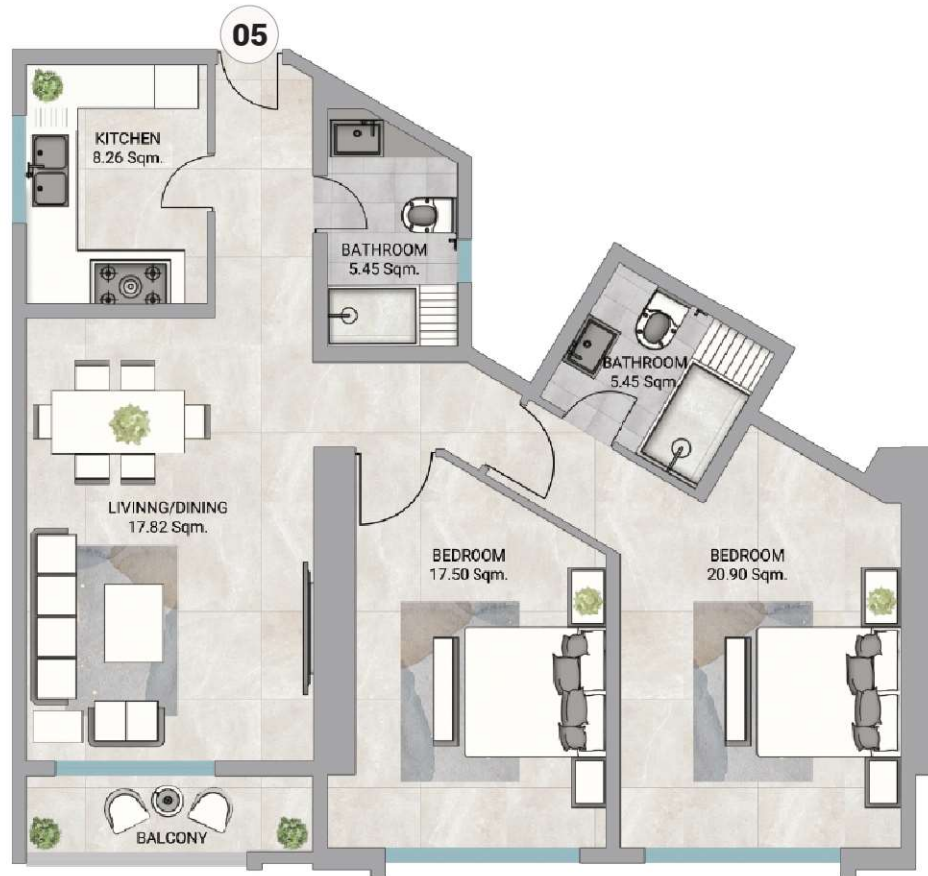
Total Area:
1280.68 SQ.FT.
118.98 SQ.M.

Disclaimer:

1. All materials, finishes, dimensions and drawings are approximate.
2. Information is subject to change without notice.
3. Actual suite area may vary from the stated area.
4. Drawings are not to scale.
5. The Developer reserves the right to make revisions /alterations without any liability whatsoever.



BARAJEEL TOWERS



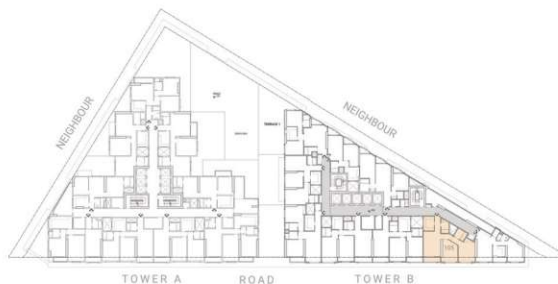
TOWER B UNIT 05

Apartment:
2 Bedroom

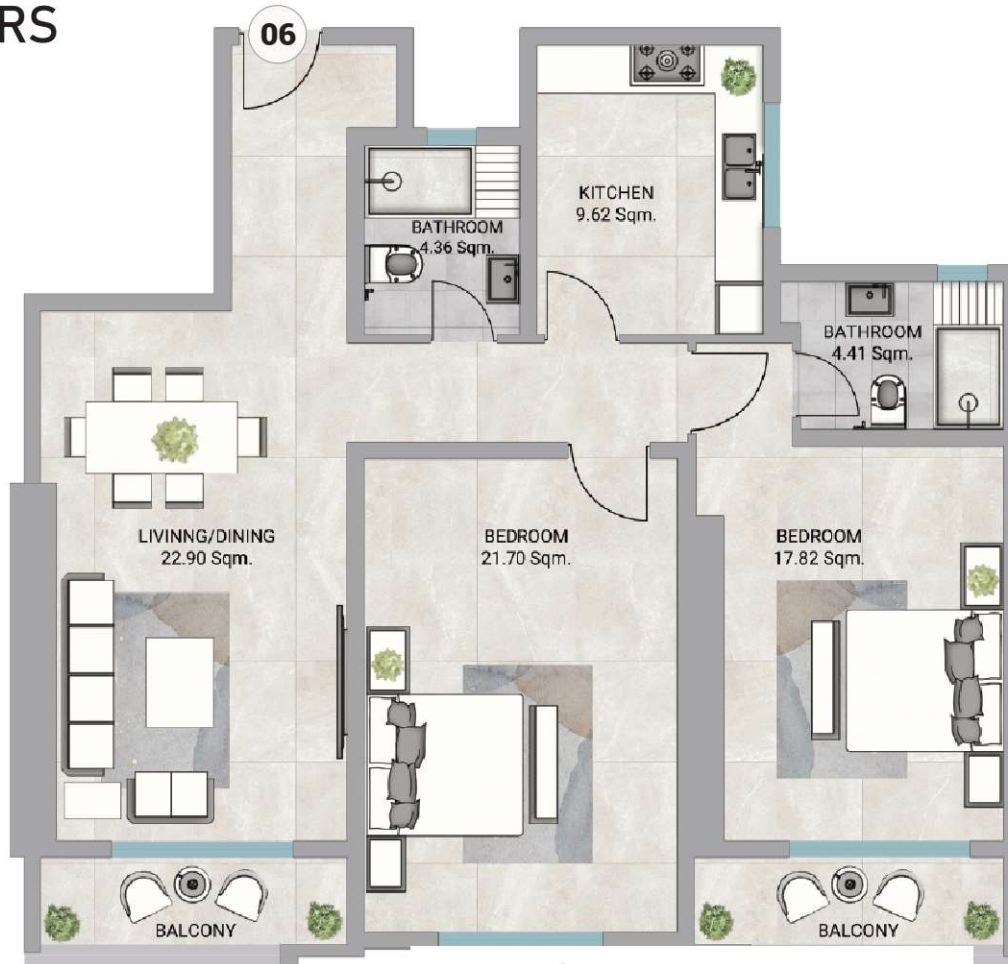
Total Area:
1801.00 SQ.FT.
167.32 SQ.M.

Disclaimer:

1. All materials, finishes, dimensions and drawings are approximate.
2. Information is subject to change without notice.
3. Actual suite area may vary from the stated area.
4. Drawings are not to scale.
5. The Developer reserves the right to make revisions /alterations without any liability whatsoever.



BARAJEEL TOWERS



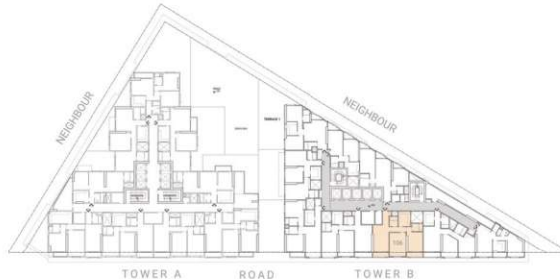
TOWER B UNIT 06

Apartment:
1 Bedroom

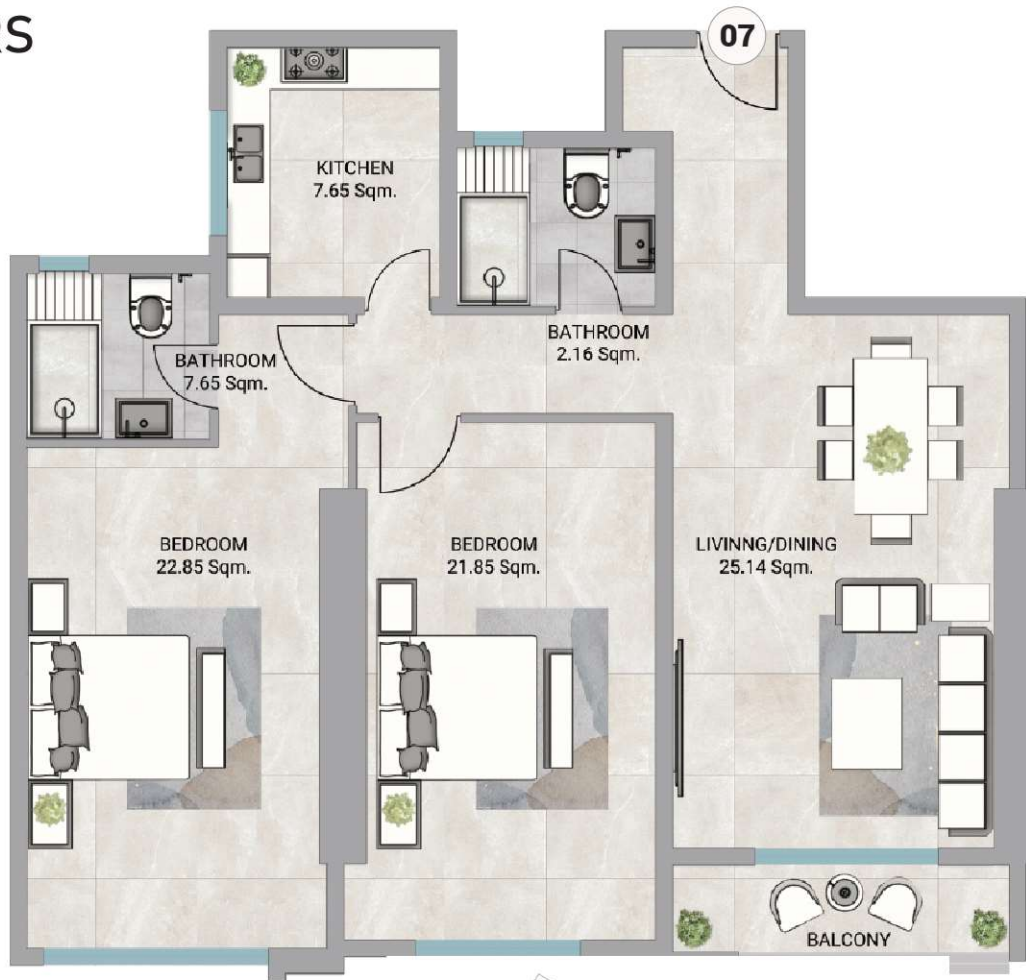
Total Area:
1876.90 SQ.FT.
174.37 SQ.M.

Disclaimer:

1. All materials, finishes, dimensions and drawings are approximate.
2. Information is subject to change without notice.
3. Actual suite area may vary from the stated area.
4. Drawings are not to scale.
5. The Developer reserves the right to make revisions /alterations without any liability whatsoever.



BARAJEEL TOWERS



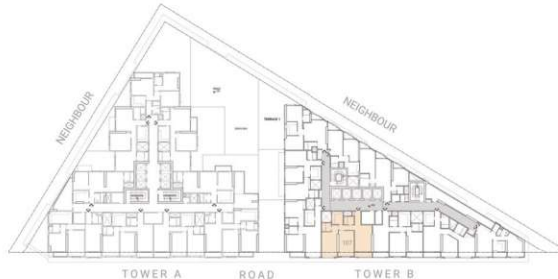
TOWER B UNIT 07

Apartment:
2 Bedroom

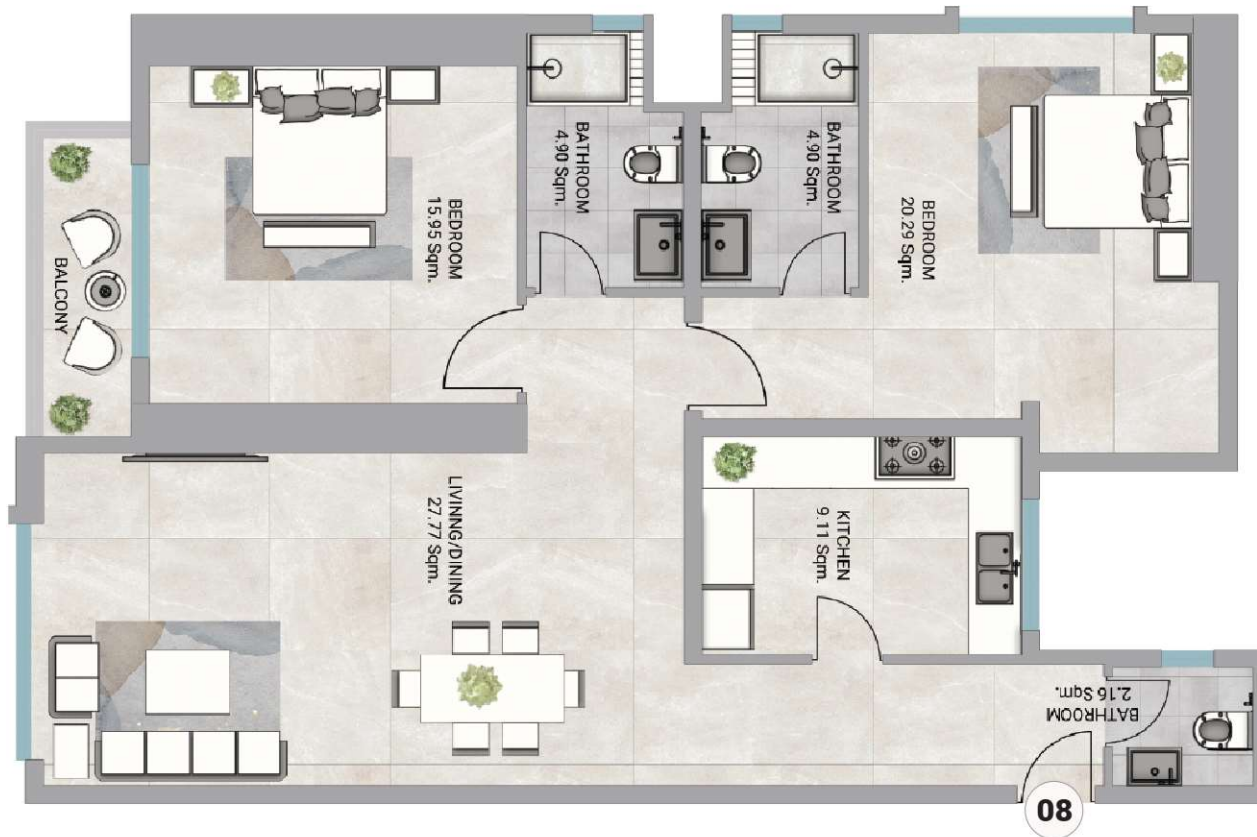
Total Area:
1910.10 SQ.FT.
177.45 SQ.M.

Disclaimer:

1. All materials, finishes, dimensions and drawings are approximate.
2. Information is subject to change without notice.
3. Actual suite area may vary from the stated area.
4. Drawings are not to scale.
5. The Developer reserves the right to make revisions /alterations without any liability whatsoever.



BARAJEEL TOWERS



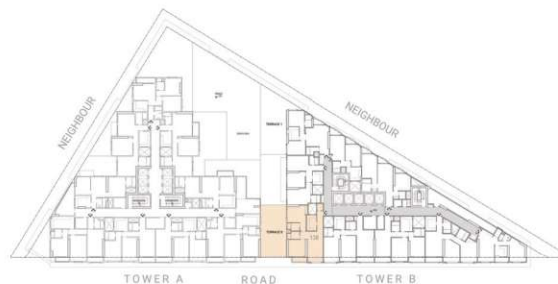
TOWER B
UNIT 08

Apartment:
1 Bedroom

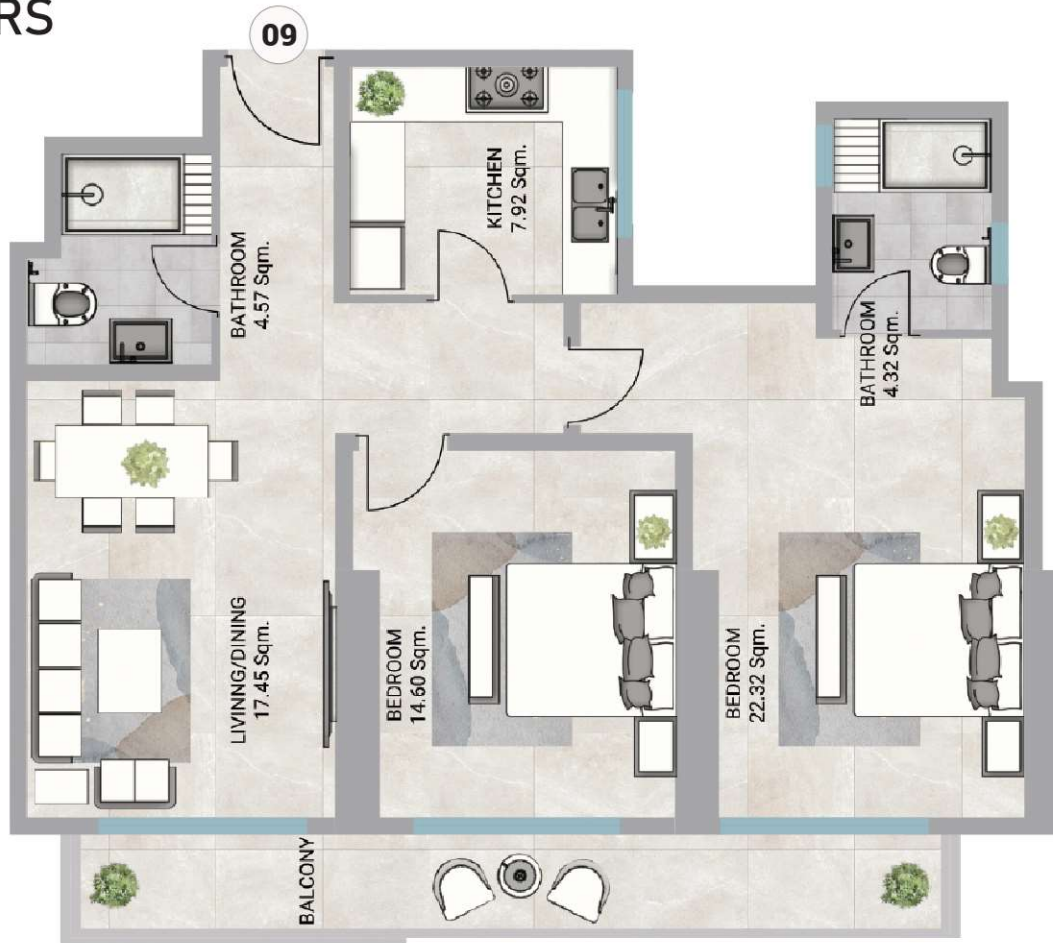
Total Area:
3148.24 SQ.FT.
292.48 SQ.M.

Disclaimer:

1. All materials, finishes, dimensions and drawings are approximate.
2. Information is subject to change without notice.
3. Actual suite area may vary from the stated area.
4. Drawings are not to scale.
5. The Developer reserves the right to make revisions /alterations without any liability whatsoever.



BARAJEEL TOWERS



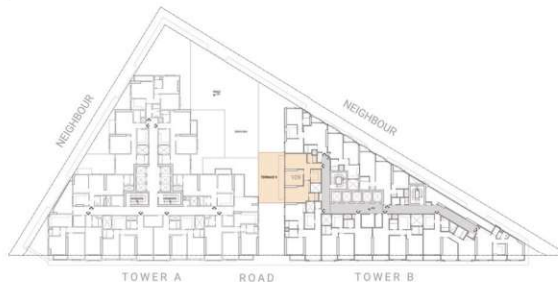
TOWER B UNIT 09

Apartment:
2 Bedroom

Total Area:
2699.66 SQ.FT.
250.81 SQ.M.

Disclaimer:

1. All materials, finishes, dimensions and drawings are approximate.
2. Information is subject to change without notice.
3. Actual suite area may vary from the stated area.
4. Drawings are not to scale.
5. The Developer reserves the right to make revisions /alterations without any liability whatsoever.



TYPICAL FLOOR PLAN
TOWER A&B

BARAJEEL TOWERS

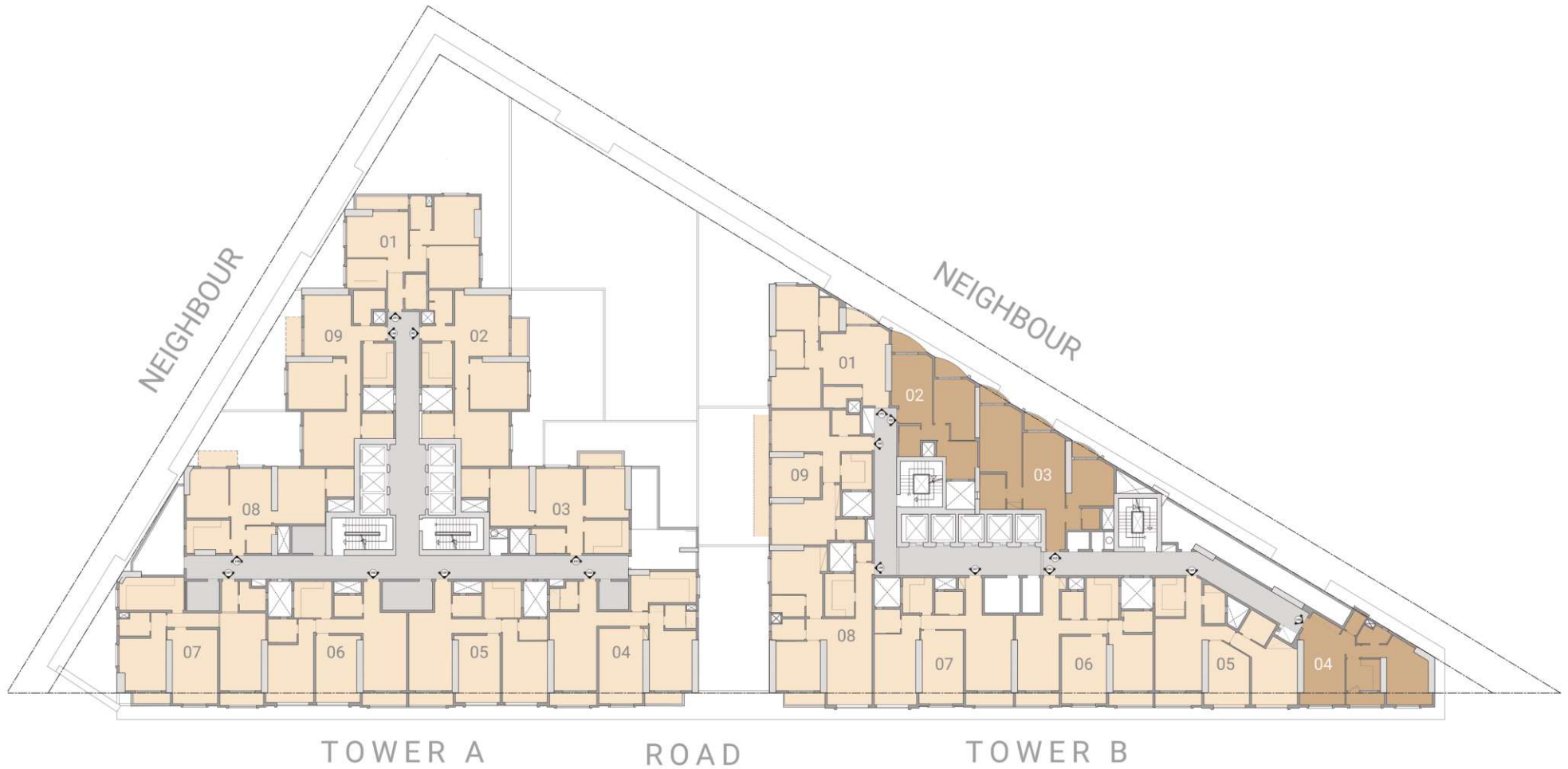
TYPICAL FLOOR PLAN

TOWER A&B

ONE BEDROOM



TWO BEDROOM



BARAJEEL TOWERS



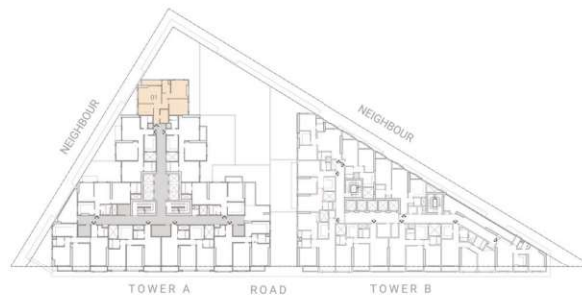
TOWER A UNIT 01

Apartment:
2 Bedroom

Total Area:
1658.70 SQ.FT.
154.10 SQ.M.

Disclaimer:

1. All materials, finishes, dimensions and drawings are approximate.
2. Information is subject to change without notice.
3. Actual suite area may vary from the stated area.
4. Drawings are not to scale.
5. The Developer reserves the right to make revisions /alterations without any liability whatsoever.



BARAJEEL TOWERS



TOWER A UNIT 02

Apartment:
2 Bedroom

Total Area:
1846.87 SQ.FT.
171.58 SQ.M.

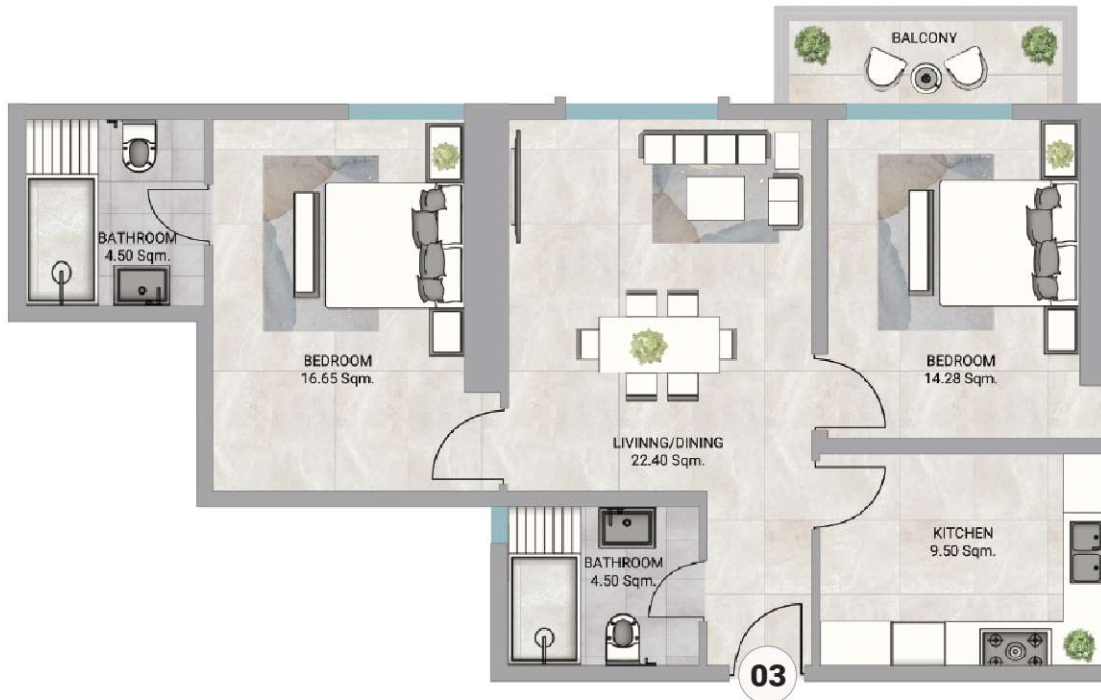
Disclaimer:

1. All materials, finishes, dimensions and drawings are approximate.
2. Information is subject to change without notice.
3. Actual suite area may vary from the stated area.
4. Drawings are not to scale.
5. The Developer reserves the right to make revisions /alterations without any liability whatsoever.



BARAJEEL TOWERS

TOWERS



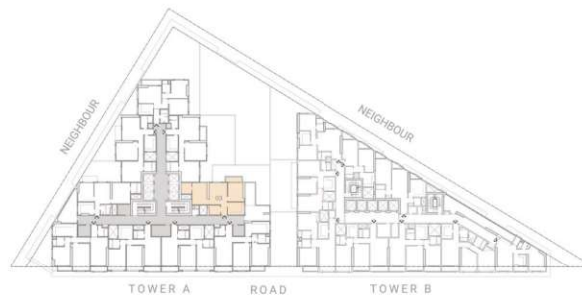
TOWER A UNIT 03

Apartment:
2 Bedroom

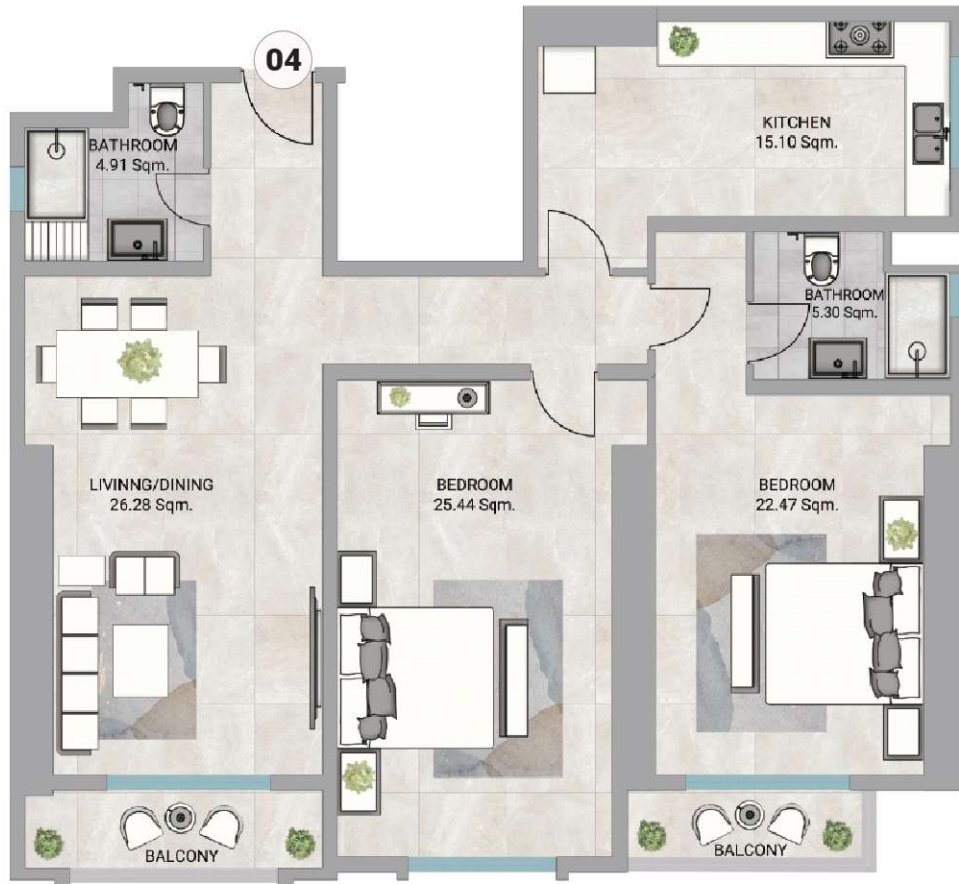
Total Area:
1484.70 SQ.FT.
137.93 SQ.M.

Disclaimer:

1. All materials, finishes, dimensions and drawings are approximate.
2. Information is subject to change without notice.
3. Actual suite area may vary from the stated area.
4. Drawings are not to scale.
5. The Developer reserves the right to make revisions /alterations without any liability whatsoever.



BARAJEEL TOWERS



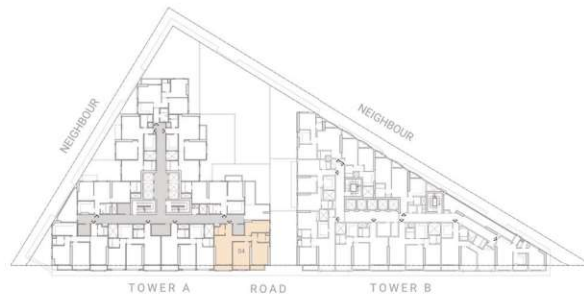
TOWER A UNIT 04

Apartment:
2 Bedroom

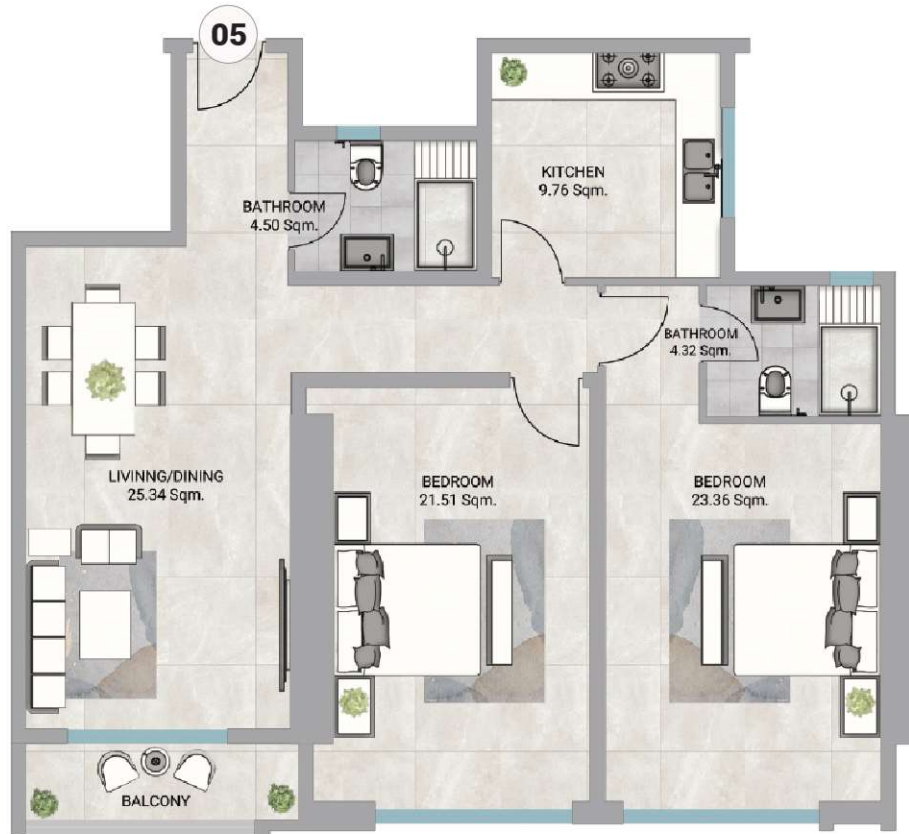
Total Area:
2144.65 SQ.FT.
199.24 SQ.M.

Disclaimer:

1. All materials, finishes, dimensions and drawings are approximate.
2. Information is subject to change without notice.
3. Actual suite area may vary from the stated area.
4. Drawings are not to scale.
5. The Developer reserves the right to make revisions /alterations without any liability whatsoever.



BARAJEEL TOWERS



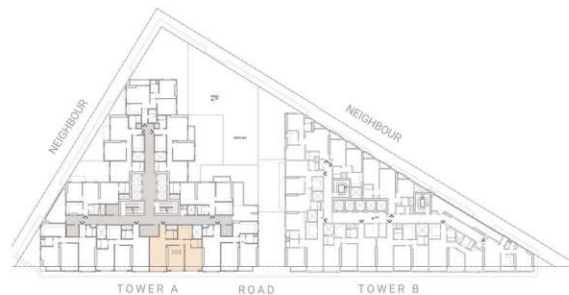
TOWER A UNIT 05

Apartment:
2 Bedroom

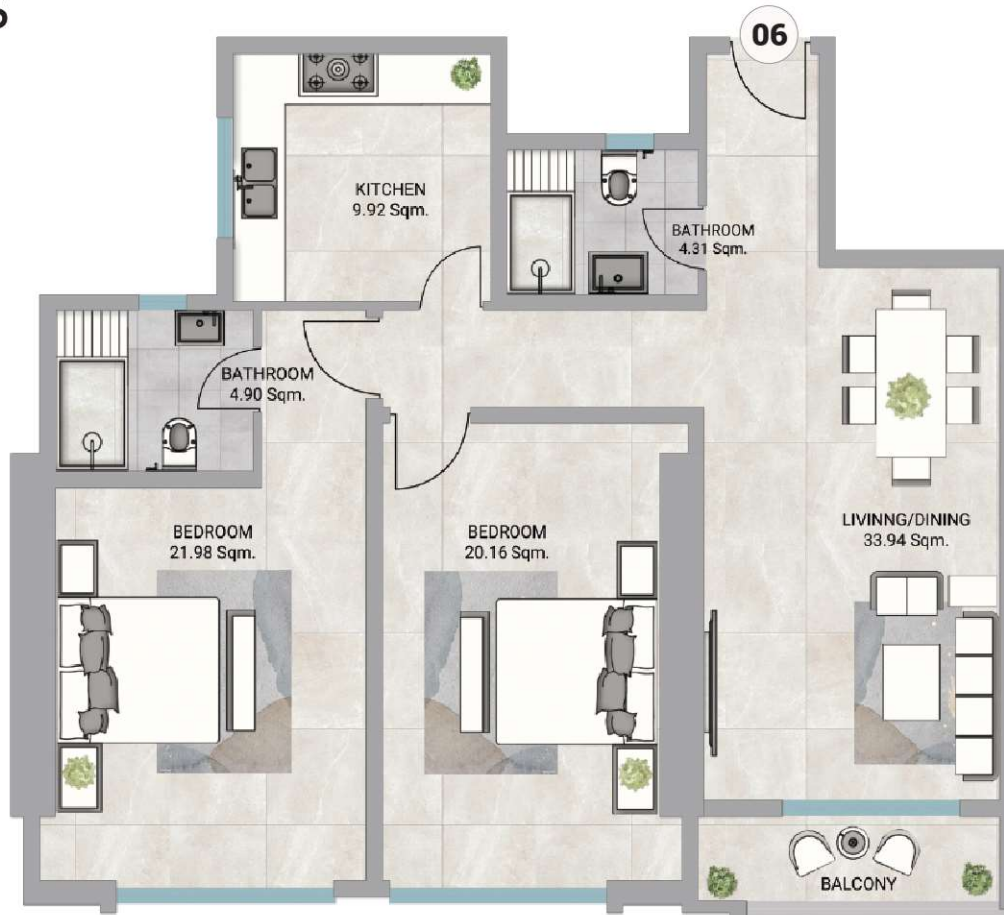
Total Area:
1860.38 SQ.FT.
172.84 SQ.M.

Disclaimer:

1. All materials, finishes, dimensions and drawings are approximate.
2. Information is subject to change without notice.
3. Actual suite area may vary from the stated area.
4. Drawings are not to scale.
5. The Developer reserves the right to make revisions /alterations without any liability whatsoever.



BARAJEEL TOWERS



TOWER A UNIT 06

Apartment:
2 Bedroom

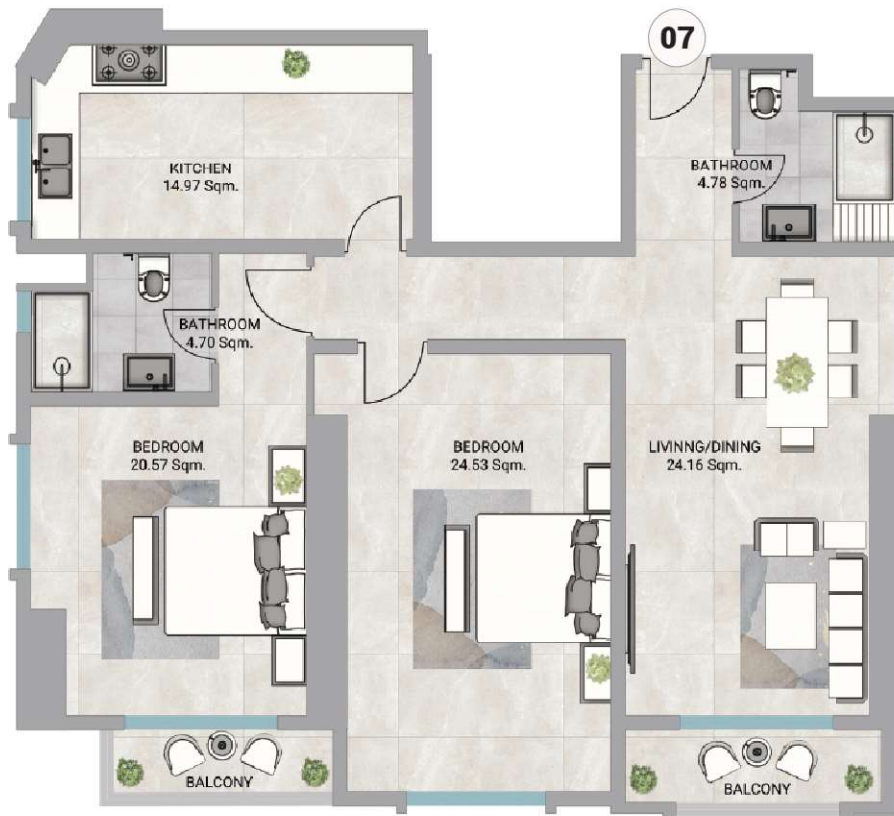
Total Area:
1863.72 SQ.FT.
173.15 SQ.M.

Disclaimer:

1. All materials, finishes, dimensions and drawings are approximate.
2. Information is subject to change without notice.
3. Actual suite area may vary from the stated area.
4. Drawings are not to scale.
5. The Developer reserves the right to make revisions /alterations without any liability whatsoever.



BARAJEEL TOWERS



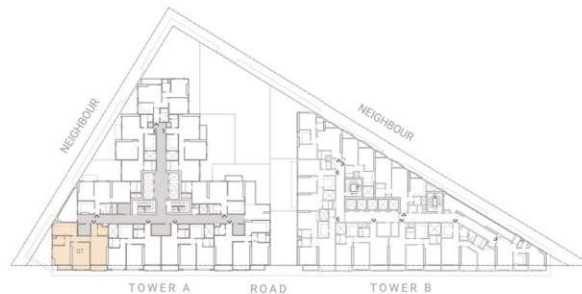
TOWER A UNIT 07

Apartment:
2 Bedroom

Total Area:
2094.43 SQ.FT.
194.58 SQ.M.

Disclaimer:

1. All materials, finishes, dimensions and drawings are approximate.
2. Information is subject to change without notice.
3. Actual suite area may vary from the stated area.
4. Drawings are not to scale.
5. The Developer reserves the right to make revisions /alterations without any liability whatsoever.



BARAJEEL TOWERS



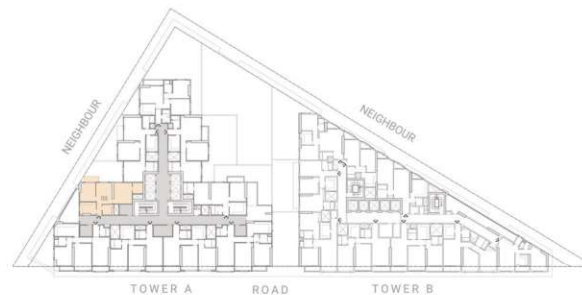
TOWER A UNIT 08

Apartment:
2 Bedroom

Total Area:
1440.33 SQ.FT.
133.81 SQ.M.

Disclaimer:

1. All materials, finishes, dimensions and drawings are approximate.
2. Information is subject to change without notice.
3. Actual suite area may vary from the stated area.
4. Drawings are not to scale.
5. The Developer reserves the right to make revisions /alterations without any liability whatsoever.



BARAJEEL TOWERS



TOWER A UNIT 09

Apartment:
2 Bedroom

Total Area:
1839.03 SQ.FT.
170.85 SQ.M.

Disclaimer:

1. All materials, finishes, dimensions and drawings are approximate.
2. Information is subject to change without notice.
3. Actual suite area may vary from the stated area.
4. Drawings are not to scale.
5. The Developer reserves the right to make revisions /alterations without any liability whatsoever.



BARAJEEL TOWERS



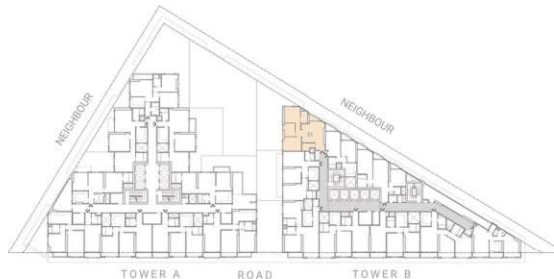
TOWER B UNIT 01

Apartment:
2 Bedroom

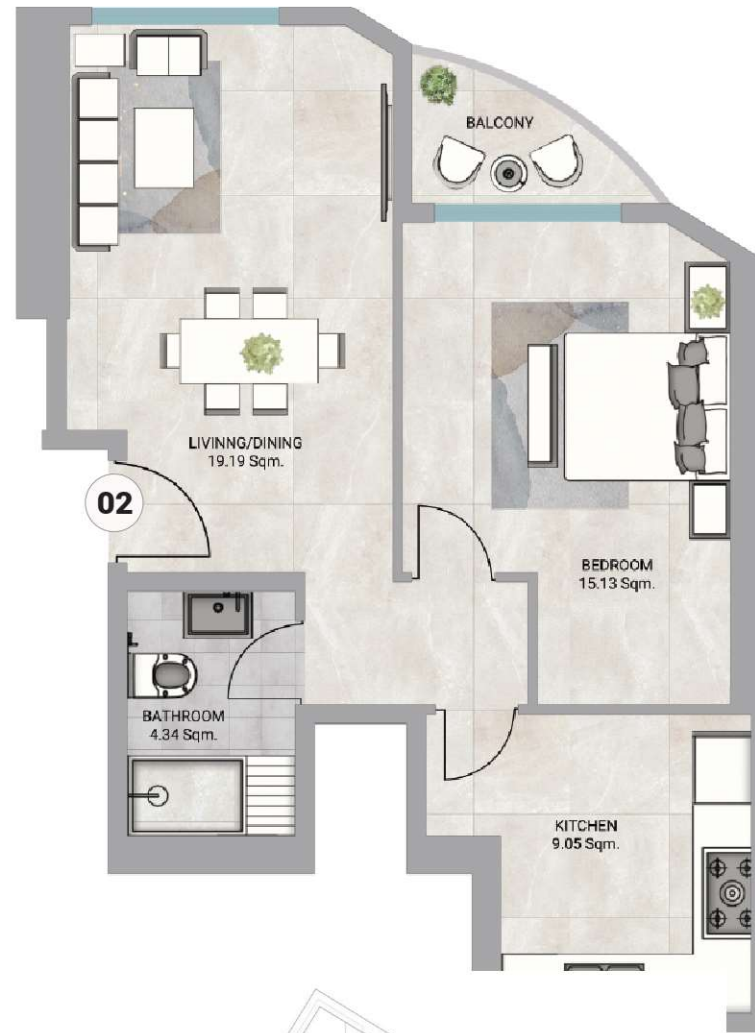
Total Area:
1590.47 SQ.FT.
147.76 SQ.M.

Disclaimer:

1. All materials, finishes, dimensions and drawings are approximate.
2. Information is subject to change without notice.
3. Actual suite area may vary from the stated area.
4. Drawings are not to scale.
5. The Developer reserves the right to make revisions /alterations without any liability whatsoever.



BARAJEEL TOWERS



TOWER B UNIT 02

Apartment:
1 Bedroom

Total Area:
1088.17 SQ.FT.
1101.09 SQ.M.

Disclaimer:

1. All materials, finishes, dimensions and drawings are approximate.
2. Information is subject to change without notice.
3. Actual suite area may vary from the stated area.
4. Drawings are not to scale.
5. The Developer reserves the right to make revisions /alterations without any liability whatsoever.

BARAJEEL TOWERS



TOWER B UNIT 03

Apartment:
1 Bedroom

Total Area:
1565.78 SQ.FT.
145.47 SQ.M.

Disclaimer:

1. All materials, finishes, dimensions and drawings are approximate.
2. Information is subject to change without notice.
3. Actual suite area may vary from the stated area.
4. Drawings are not to scale.
5. The Developer reserves the right to make revisions /alterations without any liability whatsoever.

BARAJEEL TOWERS



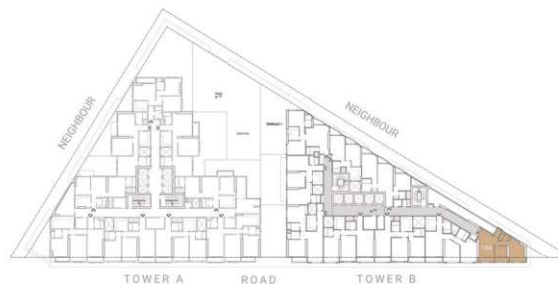
TOWER B UNIT 04

Apartment:
1 Bedroom

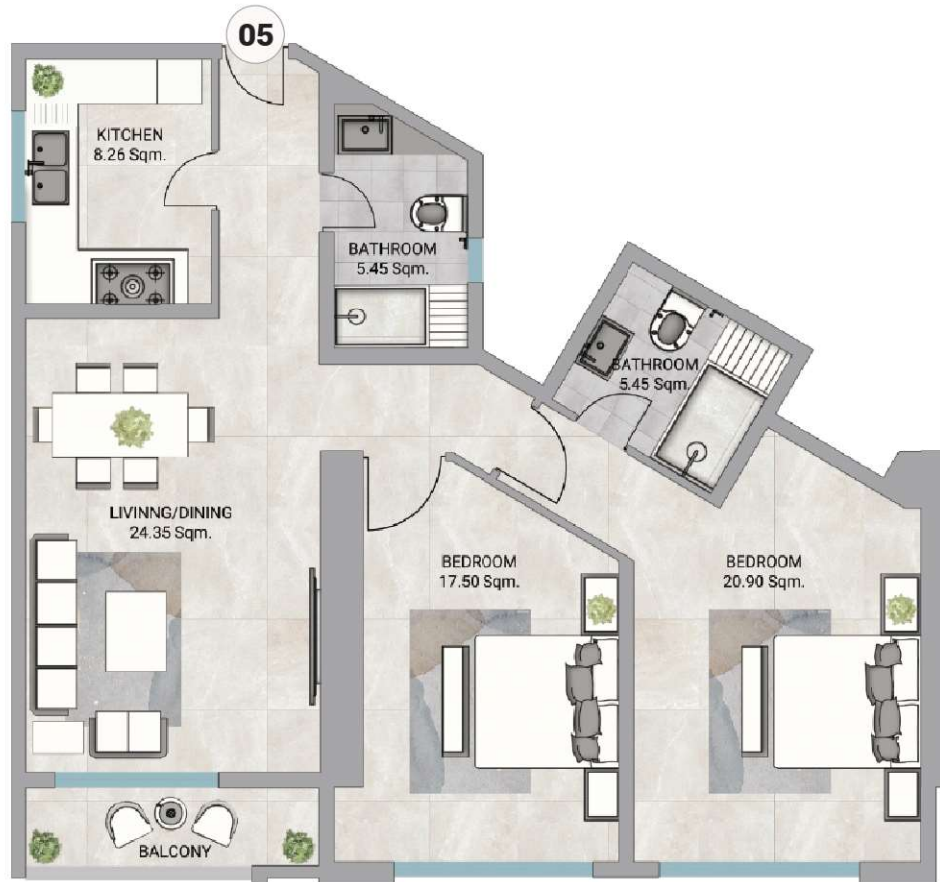
Total Area:
1281.35 SQ.FT.
119.04 SQ.M.

Disclaimer:

1. All materials, finishes, dimensions and drawings are approximate.
2. Information is subject to change without notice.
3. Actual suite area may vary from the stated area.
4. Drawings are not to scale.
5. The Developer reserves the right to make revisions /alterations without any liability whatsoever.



BARAJEEL TOWERS



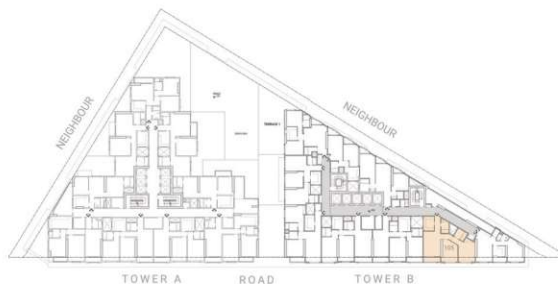
TOWER B UNIT 05

Apartment:
2 Bedroom

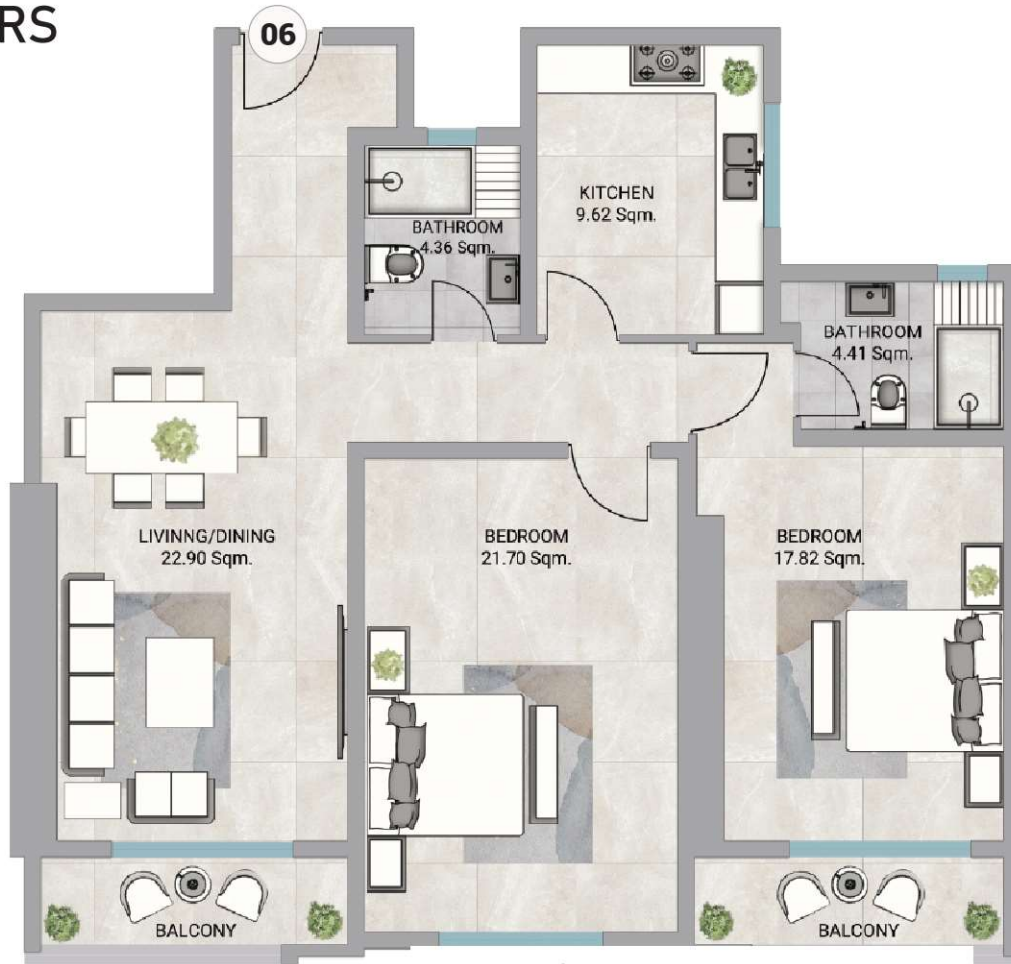
Total Area:
1800.33 SQ.FT.
167.26 SQ.M.

Disclaimer:

1. All materials, finishes, dimensions and drawings are approximate.
2. Information is subject to change without notice.
3. Actual suite area may vary from the stated area.
4. Drawings are not to scale.
5. The Developer reserves the right to make revisions /alterations without any liability whatsoever.



BARAJEEL TOWERS



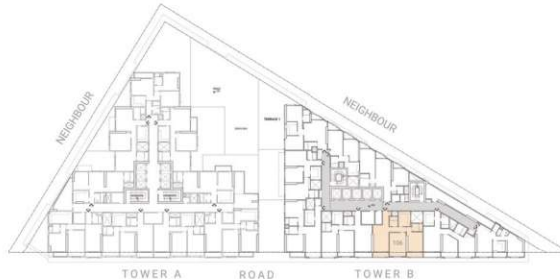
TOWER B UNIT 06

Apartment:
1 Bedroom

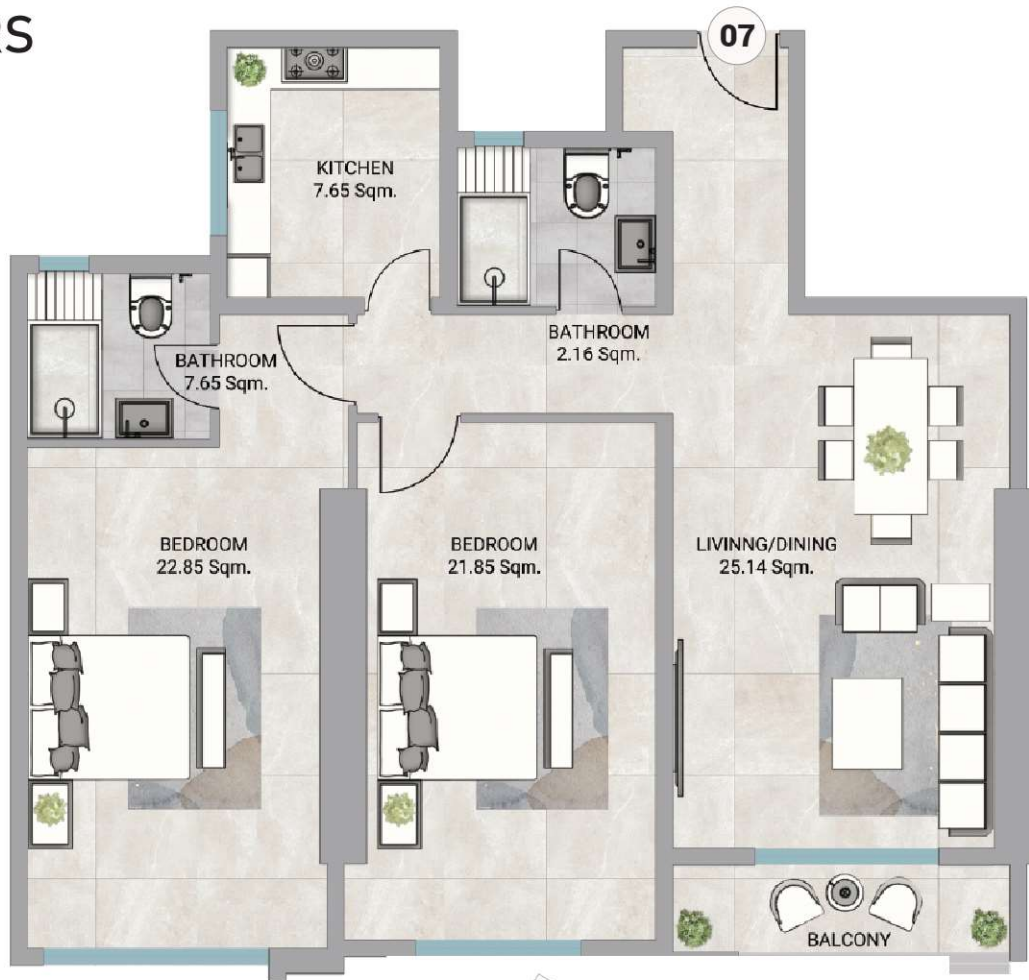
Total Area:
1876.90 SQ.FT.
174.37 SQ.M.

Disclaimer:

1. All materials, finishes, dimensions and drawings are approximate.
2. Information is subject to change without notice.
3. Actual suite area may vary from the stated area.
4. Drawings are not to scale.
5. The Developer reserves the right to make revisions /alterations without any liability whatsoever.



BARAJEEL TOWERS



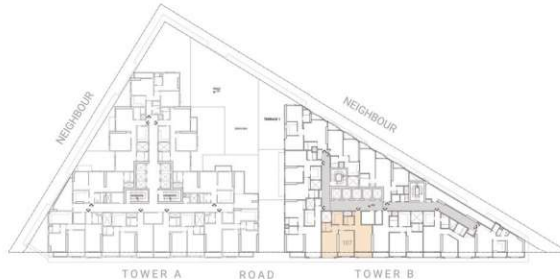
TOWER B UNIT 07

Apartment:
2 Bedroom

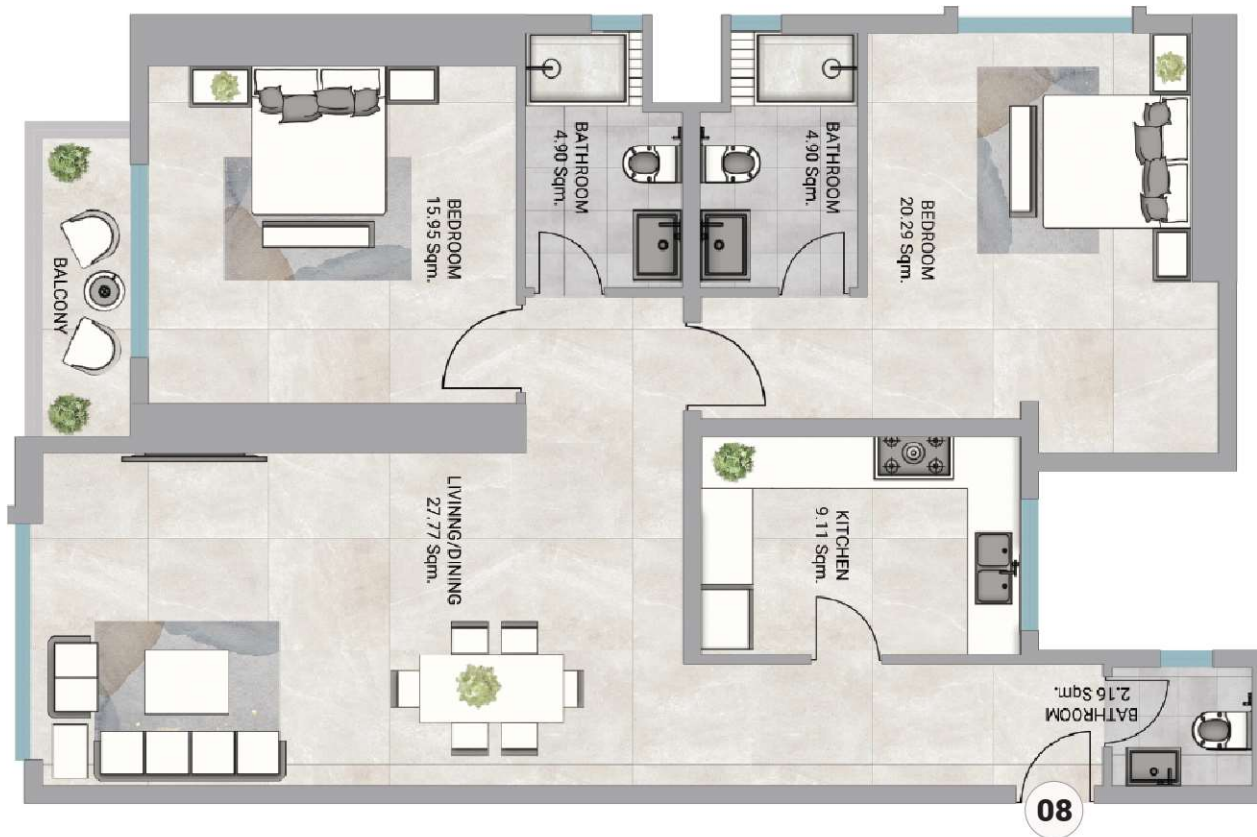
Total Area:
1910.10 SQ.FT.
177.45 SQ.M.

Disclaimer:

1. All materials, finishes, dimensions and drawings are approximate.
2. Information is subject to change without notice.
3. Actual suite area may vary from the stated area.
4. Drawings are not to scale.
5. The Developer reserves the right to make revisions /alterations without any liability whatsoever.



BARAJEEL TOWERS



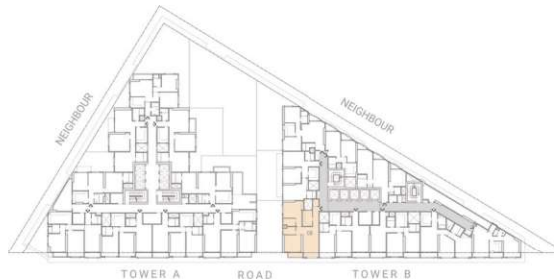
TOWER B
UNIT 08

Apartment:
1 Bedroom

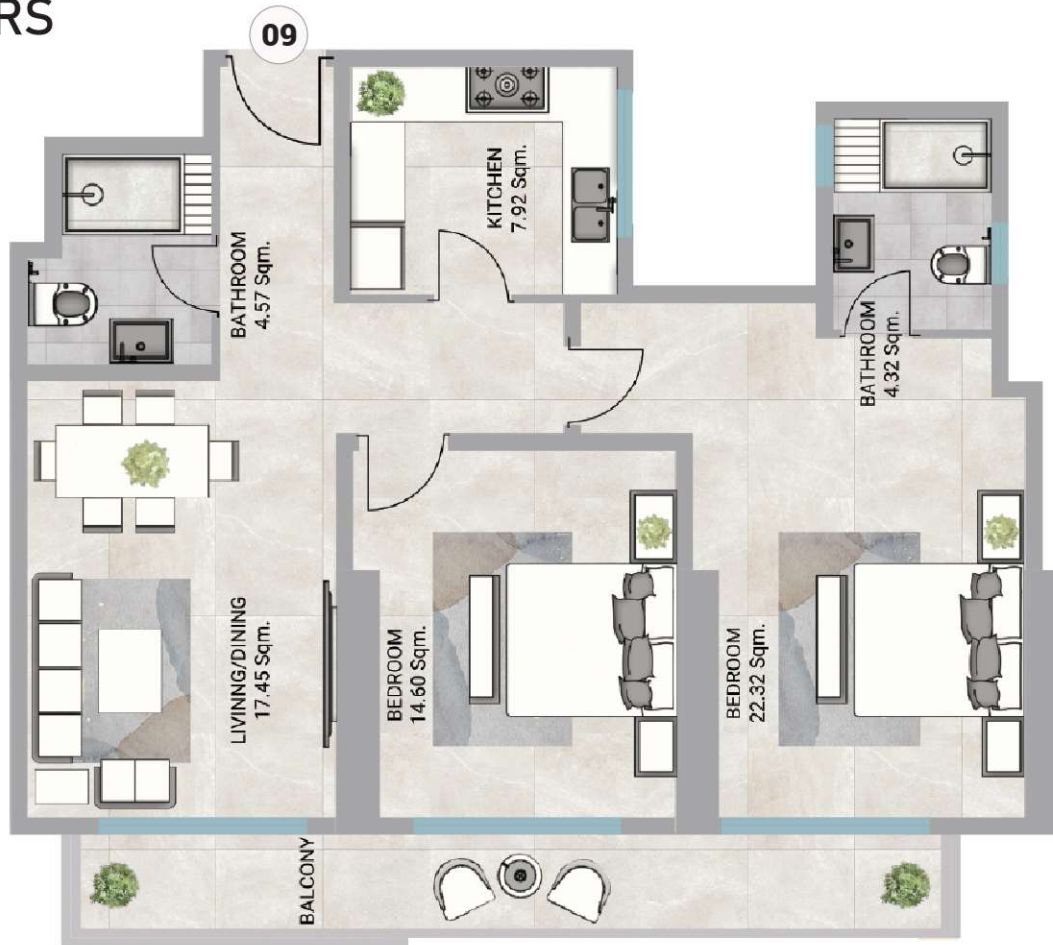
Total Area:
1900.92 SQ.FT.
176.60 SQ.M.

Disclaimer:

1. All materials, finishes, dimensions and drawings are approximate.
2. Information is subject to change without notice.
3. Actual suite area may vary from the stated area.
4. Drawings are not to scale.
5. The Developer reserves the right to make revisions /alterations without any liability whatsoever.



BARAJEEL TOWERS



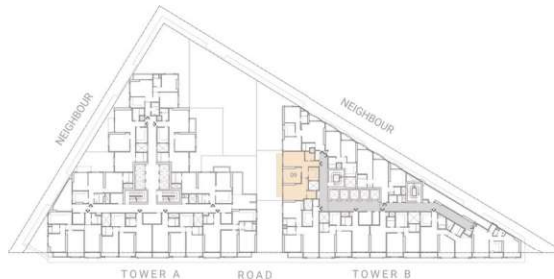
TOWER B
UNIT 09

Apartment:
2 Bedroom

Total Area:
1730.76 SQ.FT.
160.79 SQ.M.

Disclaimer:

1. All materials, finishes, dimensions and drawings are approximate.
2. Information is subject to change without notice.
3. Actual suite area may vary from the stated area.
4. Drawings are not to scale.
5. The Developer reserves the right to make revisions /alterations without any liability whatsoever.



PAYMENT PLAN

10%
DownPayment

6
Years Payment Plan

100%
Freehold for all nationalities



WHY INVEST IN AJMAN

Ajman's property market is flourishing, and investors are taking notice. Here, you can secure a foothold in a thriving region with properties boasting excellent value. Enjoy strong potential returns, a strategic location near major business centers, and a government committed to growth. Freehold ownership and investor-friendly policies make Ajman an ideal place to build your wealth.



GJ Properties is an Ajman based property developer, established in 1998. One of the largest and fastest growing providers of residential, commercial and industrial properties in Ajman, GJ Properties with over 20 years of experience, has been recognized as the 'Best Property Agency' by the Arabian Property Awards 21-2020.

GJ Properties focused team of highly qualified engineers, architects, and construction personnel demonstrates their superior performance in the properties industry. Stemming from building and maintaining high-quality homes and developments, their design principles are rooted deeply in understanding comfort and convenience - all emerging from a core of ergonomics.

Whether a rental property or a beachfront home, GJ Properties' expert team will create exactly what a thriving community needs. GJ Properties ensures every property they develop shall provide comfort and convenience for years to come - even with the changing trends of modern architecture. Devoted to creating homes for generations, GJ Properties has built an elegant legacy of providing the best in quality construction standards and only excellence in customer service.