



THE CUBE
RESIDENCES

Inspiration In Every Angle



Concept

The Cube, a three-dimensional symbol of **stability and balance**, is more than just a residential building—it's a dynamic community in **Dubai's MBR District 11**. Designed for the youth, artists, entrepreneurs & innovators, The Cube fosters creativity & collaboration in a space where **smart home technology & adaptable furniture** enhance everyday living. Blending geometric perfection with modern convenience, The Cube is a hub for limitless potential, **where innovative minds come together to thrive.**





About AMWAJ Development

The developer of The Cube Residences is **Amwaj Development**, a premier real estate developer in the UAE with a mission to elevate living standards by creating communities that cultivate experiences, innovation & offer eco-friendly development solutions. Amwaj Development seeks to redefine the meaning of urban living in Dubai while ensuring premium quality products and a smooth client journey.



Prime Location Mohammed Bin Rashid City District II

MBR District II reflects the visionary leadership of His Highness Sheikh Mohammed Bin Rashid Al Maktoum, UAE Vice President, Prime Minister, and Ruler of Dubai. This thriving district has become a symbol of Dubai's commitment to innovation and sustainable urban development, offering a harmonious blend of modern living and lush green landscapes. MBR District II elevates Dubai's stature on the world stage while ensuring a superior quality of life for its residents, with its strategic location and exceptional amenities.

Connecting You To The City Mohammed Bin Rashid City District II

12
Minutes

Burj Khalifa

15
Minutes

Downtown Dubai

15
Minutes

Dubai Mall

20
Minutes

Dubai Airport

25
Minutes

Palm Jumeirah

30
Minutes

Dubai Marina

25
Minutes

Burj Al Arab

25
Minutes

Mall Of The Emirates

30
Minutes

Al Maktoum Airport



PALM JUMEIRAH
DUBAI MARINA

BURJ AL ARAB

MALL OF THE
EMIRATES

BURJ KHALIFA
& DOWNTOWN DUBAI

DUBAI INTERNATIONAL
AIRPORT

AL MAKTOUM AIRPORT



THE CUBE
RESIDENCES



Geometric
Perfection



THE CUBE



AMWAJ



T.H.E. CUBE



THE CUBE



A Canvas of Comfort & Creativity

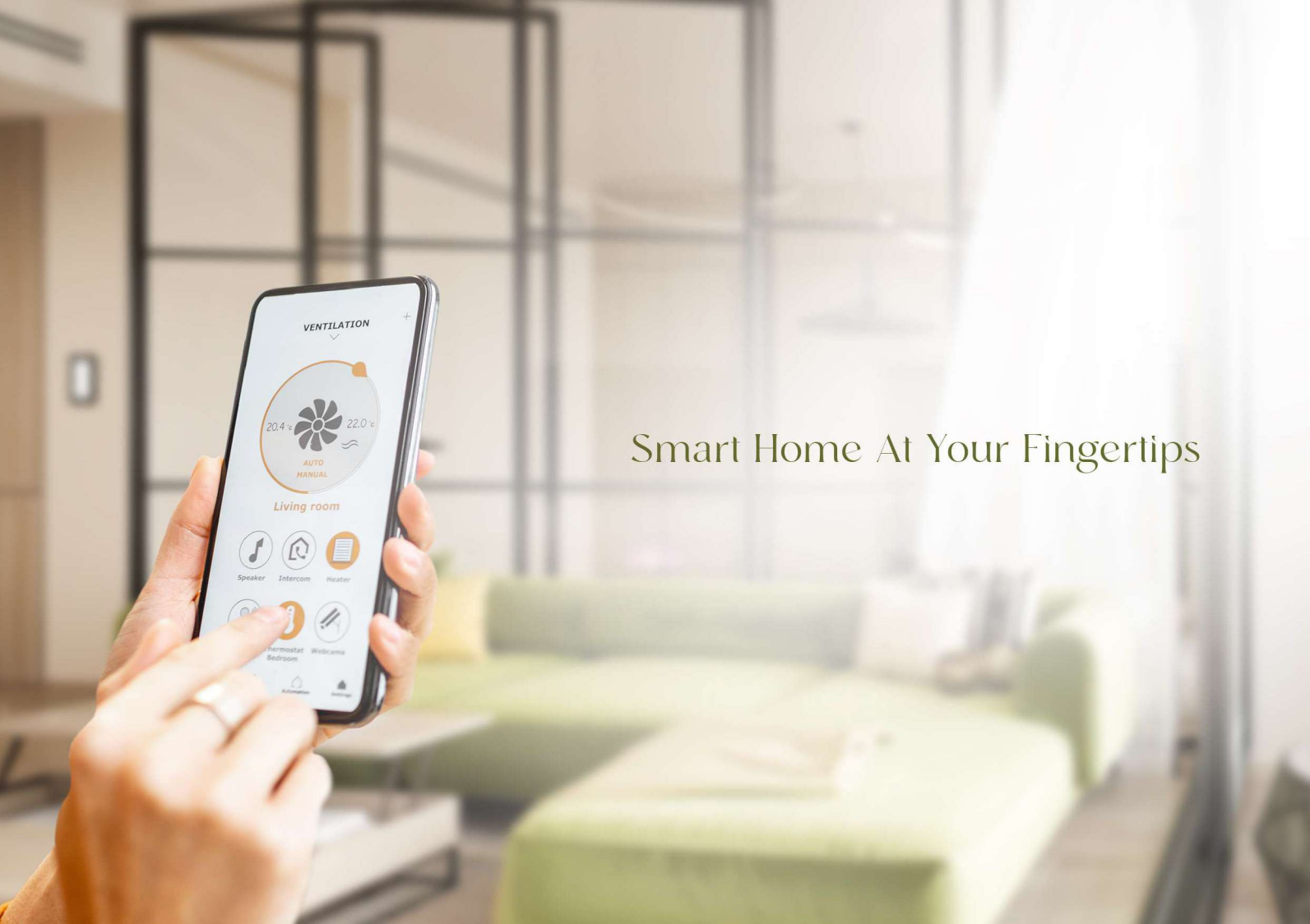





THE CUBE
RESIDENCES

Walk in With Prestige





Smart Home At Your Fingertips

Fold Away. Flexible Spaces





Smart
Spaces





Expand Your Table





Unfold and
Work With A View







Kick Off
Your Morning





Create
collaborate & thrive at
the Work Space Lounge



Progress
& feel the burn at the
Fitness Centre



Fuel
your day at the
Coffee Corner



Live
smarter, with a touch at your
Smart home automation



Enjoy
endless fun & excitement
at the Gaming Room



Adapt
smart furniture that
fits your lifestyle.



Splash
into relaxation at the
Rooftop Pool & Lounge



Play
at the Arcade & recharge
at the vending machine



Relax
rejuvenate and revive
at the Sauna



Stay
secure always with our
24/7 Security

A high-angle, top-down photograph of a woman swimming in a pool. She is seen from behind, with her arms raised and hands open, splashing water. Her hair is wet and pulled back. The water is a vibrant, clear blue, and the overall scene conveys a sense of relaxation and enjoyment.

Where Every Day
Feels Like a Vacation

Catch The Sunset



THE CURS

Rooftop



Meaningful Moments Together





Chill and Connect







Game It Up



SPONETA BLACK

MADE IN GERMANY

BLACK OUTDOOR

SOLO



Your Fitness Journey
Starts Here



Stay Fit



LET'S GO
FORWARD

FLOOR PLANS

AMWAJ أمواج
DEVELOPMENT للتطوير

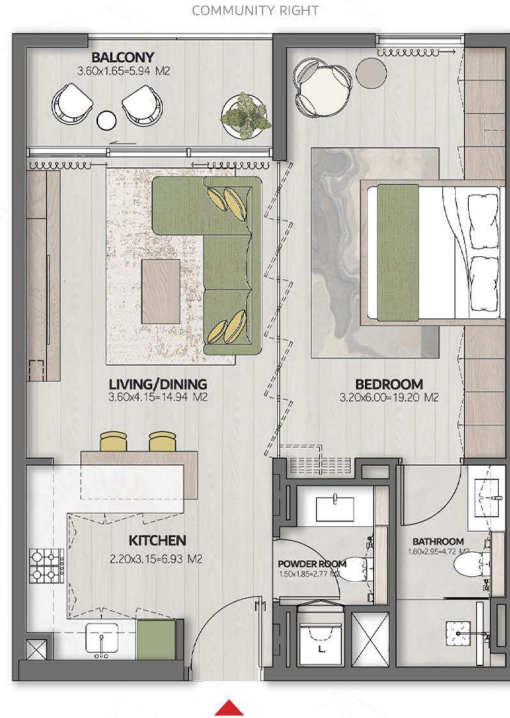
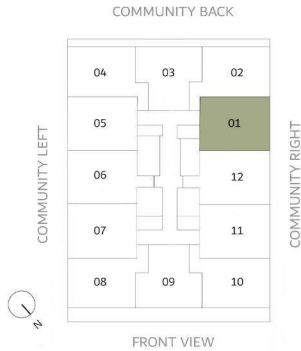


THE CUBE

RESIDENCES

1 BEDROOM -TYPE 1

SUITE AREA	639.91 - 682.54 FT ²
BALCONY	68.14 - 68.24 FT ²
TOTAL AREA	708.48 - 750.68 FT ²



Disclaimer: all pictures, plans, layouts, information, data and details included in this brochure are indicative only and may change at any time up to the final 'as built status in accordance with the final designs of the project, regulatory approvals and planning permissions

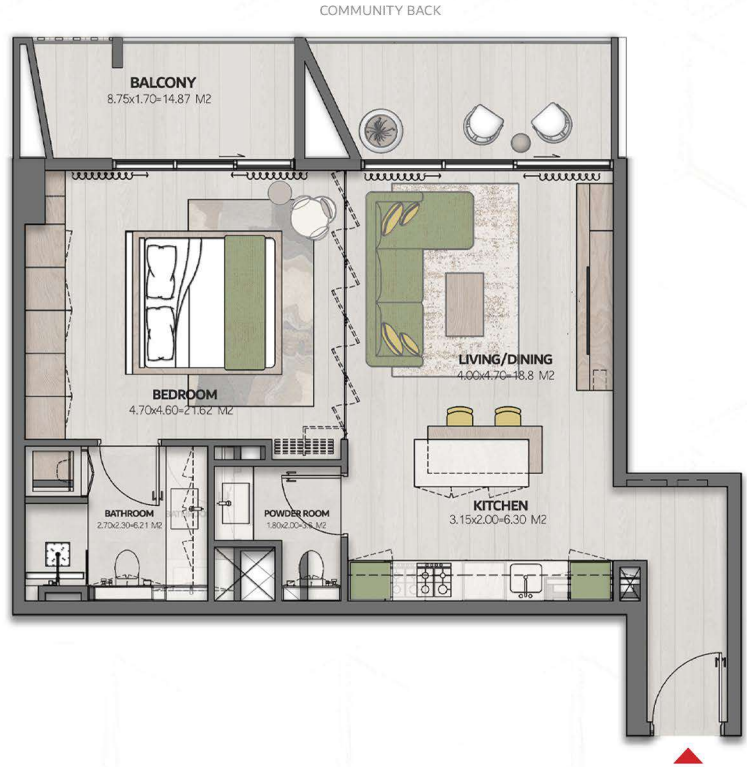
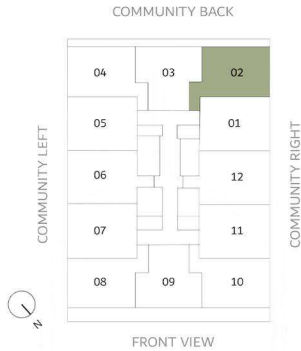


THE CUBE

RESIDENCES

1 BEDROOM - TYPE 2

SUITE AREA	689 FT ²
BALCONY	96.01 - 175.34 FT ²
TOTAL AREA	785.01 - 864.34 FT ²



Disclaimer: all pictures, plans, layouts, information, data and details included in this brochure are indicative only and may change at any time up to the final 'as built status in accordance with the final designs of the project, regulatory approvals and planning permissions

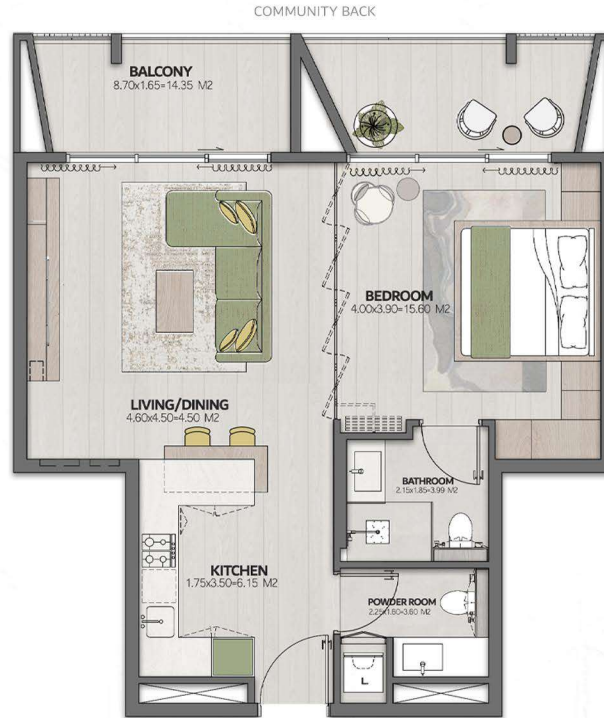
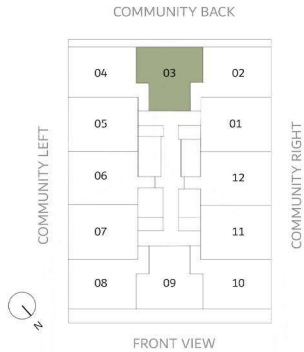


THE CUBE

RESIDENCES

1 BEDROOM - TYPE 3

SUITE AREA	653.37 FT ²
BALCONY	98.17 - 177.82 FT ²
TOTAL AREA	751.54 - 831.19 FT ²



Disclaimer: all pictures, plans, layouts, information, data and details included in this brochure are indicative only and may change at any time up to the final 'as built' status in accordance with the final designs of the project, regulatory approvals and planning permissions

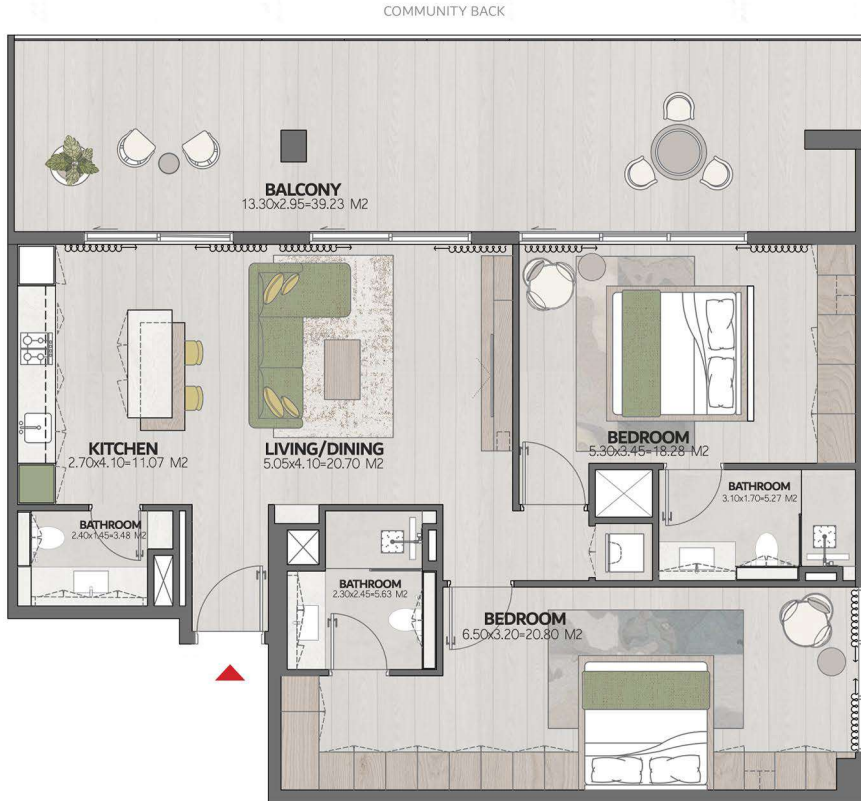
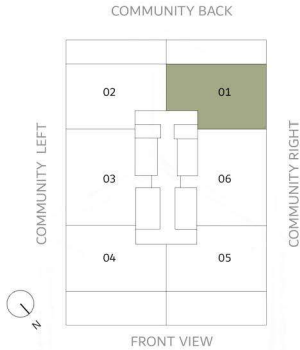


THE CUBE

RESIDENCES

2 BEDROOM -TYPE 1

SUITE AREA	1126.8 FT ²
BALCONY	451.1 - 568.23 FT ²
TOTAL AREA	1577.9 - 1695 FT ²



Disclaimer: all pictures, plans, layouts, information, data and details included in this brochure are indicative only and may change at any time up to the final 'as built status in accordance with the final designs of the project, regulatory approvals and planning permissions

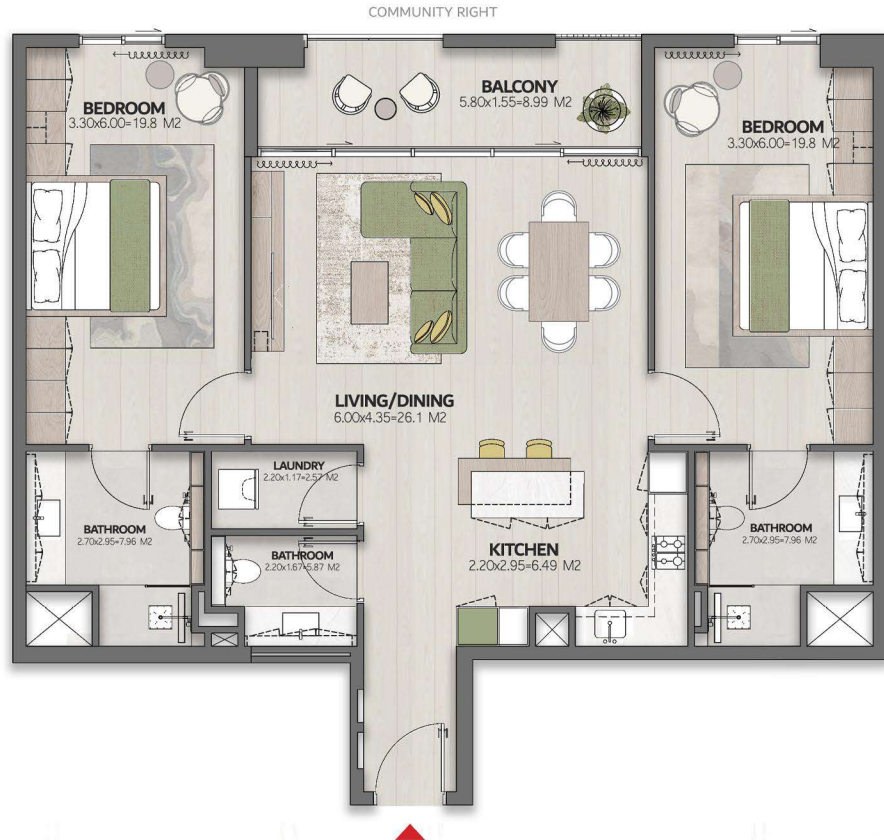
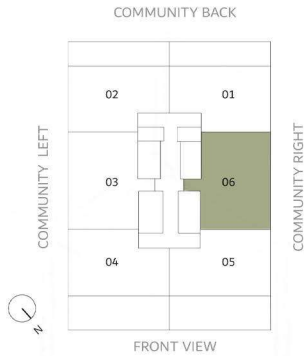


THE CUBE

RESIDENCES

2 BEDROOM -TYPE 2

SUITE AREA	1208.89- 1210.5 FT ²
BALCONY	106.6FT ²
TOTAL AREA	1315.45 - 1317.1FT ²



Disclaimer: all pictures, plans, layouts, information, data and details included in this brochure are indicative only and may change at any time up to the final 'as built status in accordance with the final designs of the project, regulatory approvals and planning permissions

Discover Your Future Apartment In



Tap on each image to experience the 360



Disclaimer: This 360° tour is intended for illustrative purposes only and showcases the layout of our 1-bedroom Type 1 apartment. Variations in size, finishes, and fixtures may occur between different units. Please refer to official floor plans for specific details.