



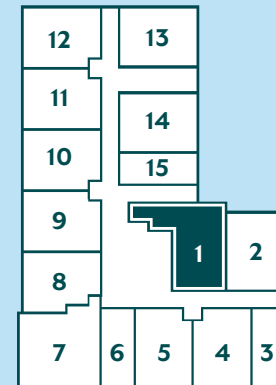
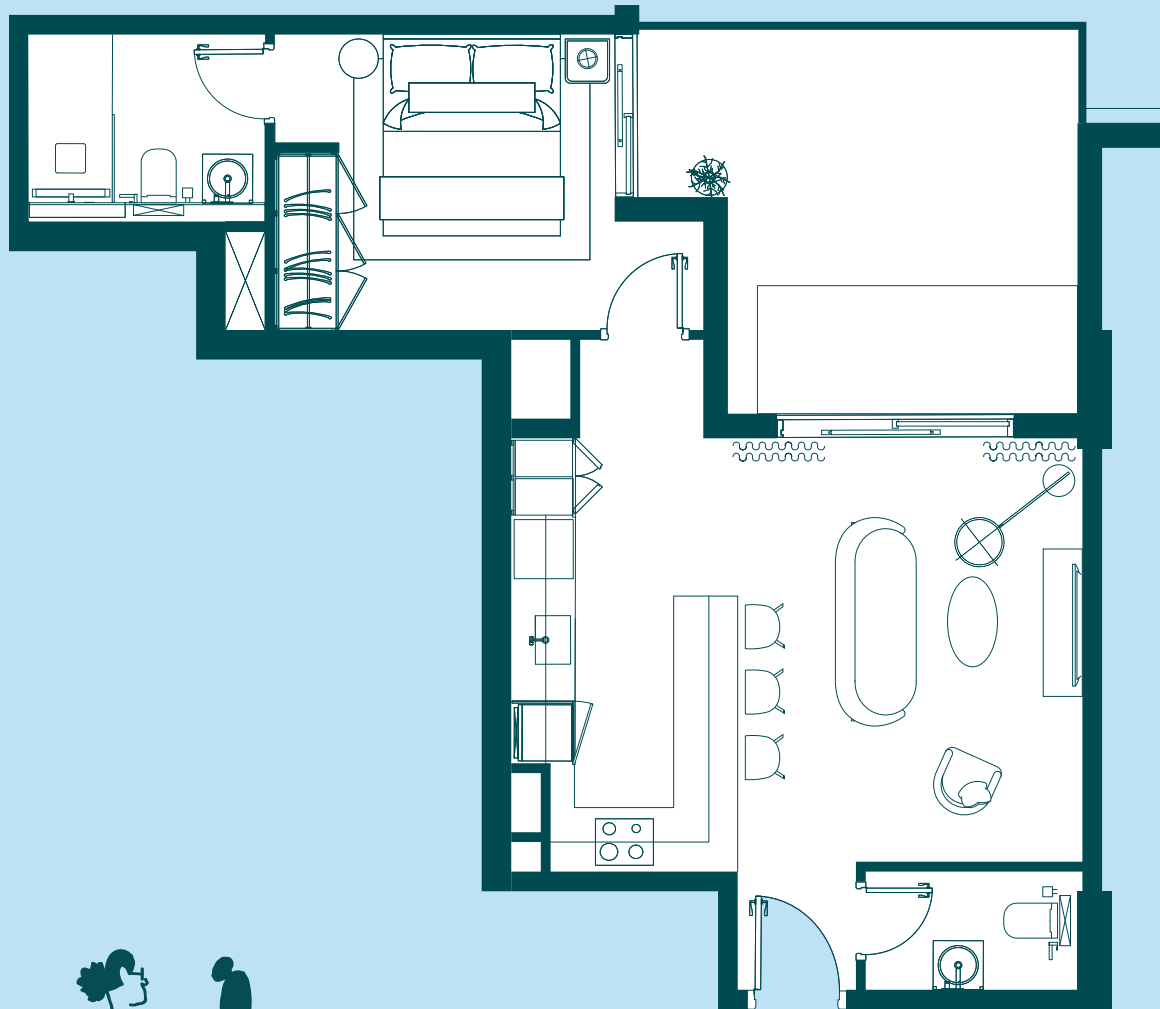
# 1 BED

Unit 101

741 Sq.ft

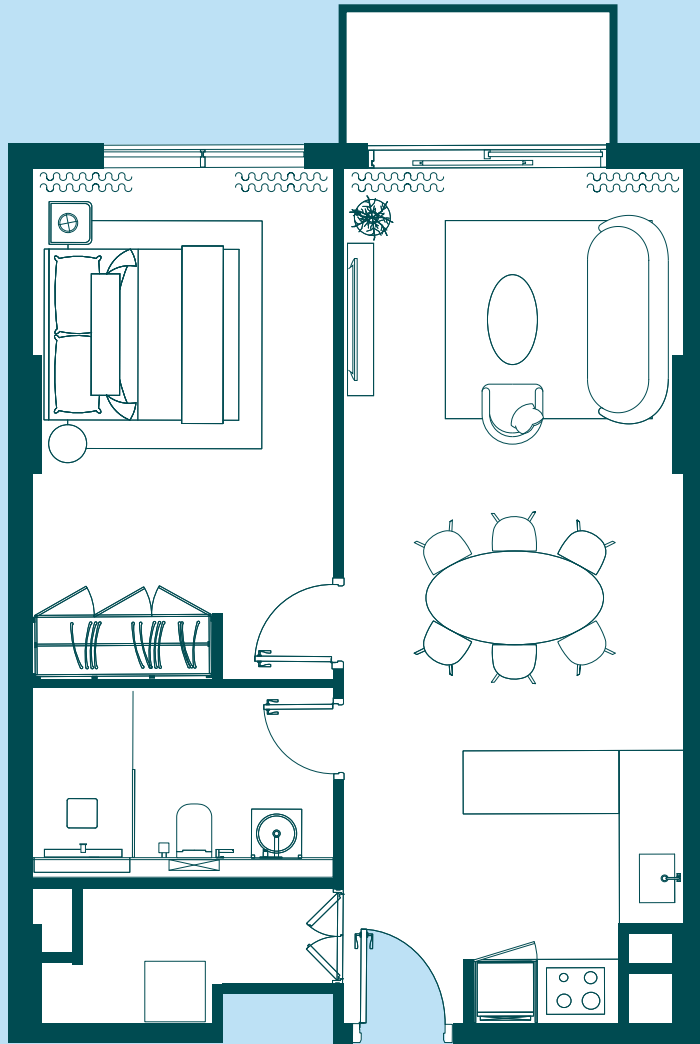
## DIMENSIONS

- ❶ INTERNAL AREA: 552.73 Sq.Ft. (51.35 Sq.M.)
- ❷ BALCONY AREA: 188.05 Sq. Ft. (17.47Sq.M.)
- ❸ TOTAL AREA: 740.77 Sq. Ft. (68.82 Sq.M.)



More information at:  
[rise-residences.com](http://rise-residences.com)

1. All dimensions are in imperial and metric, and measured to structural elements and exclude wall finishes and construction tolerances. 2. All materials, dimensions, and drawings are approximate only. 3. Information is subject to change without notice at developer's absolute discretion. 4. Actual area may vary from the stated area. 5. Drawings not to scale. 6. All images used are for illustrative purposes only and do not represent the actual size, features, specifications, fittings, and furnishings. 7. The developer reserves the right to make revisions / alterations, at its absolute discretion, without any liability whatsoever.



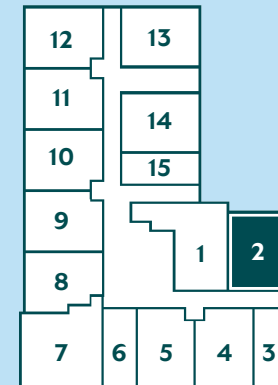
# 1 BED

Unit 102

723 Sq.ft

## DIMENSIONS

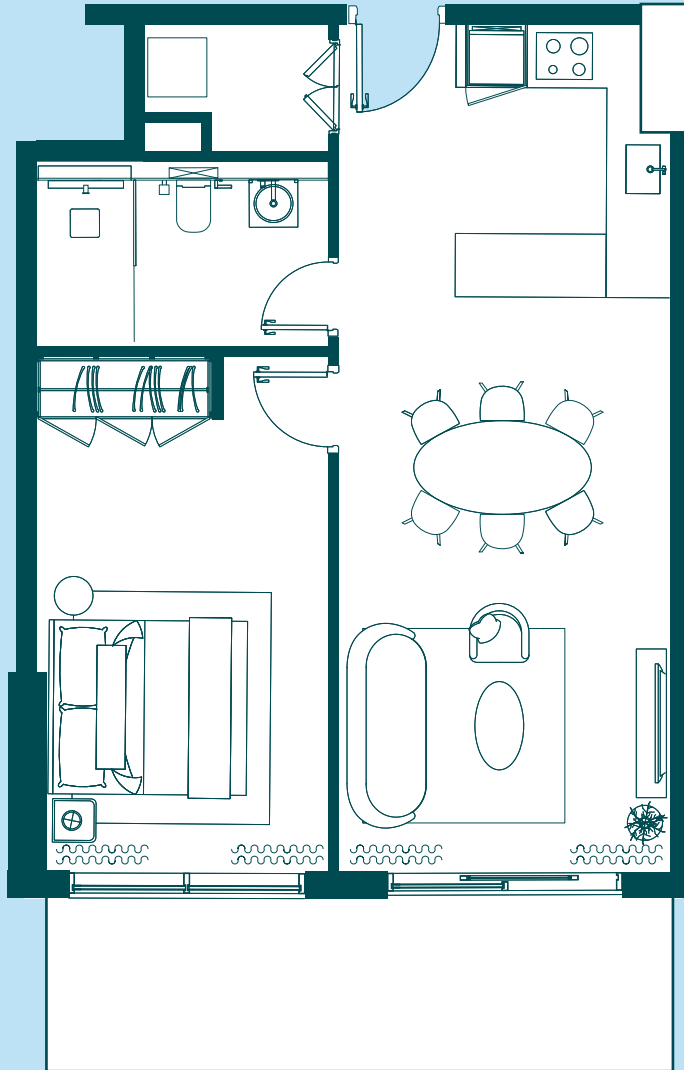
- ❶ **INTERNAL AREA:** 603.10 Sq.Ft. (56.03 Sq.M.)
- ❷ **BALCONY AREA:** 120.02 Sq. Ft. (11.15 Sq.M.)
- ❸ **TOTAL AREA:** 723.12 Sq. Ft. (67.18 Sq.M.)



1. All dimensions are in imperial and metric, and measured to structural elements and exclude wall finishes and construction tolerances. 2. All materials, dimensions, and drawings are approximate only. 3. Information is subject to change without notice at developer's absolute discretion. 4. Actual area may vary from the stated area. 5. Drawings not to scale. 6. All images used are for illustrative purposes only and do not represent the actual size, features, specifications, fittings, and furnishings. 7. The developer reserves the right to make revisions / alterations, at its absolute discretion, without any liability whatsoever.

More information at:  
[rise-residences.com](http://rise-residences.com)





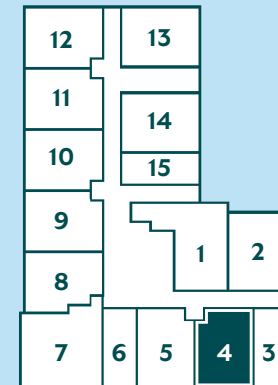
# 1 BED

Unit 104

751 Sq.ft

## DIMENSIONS

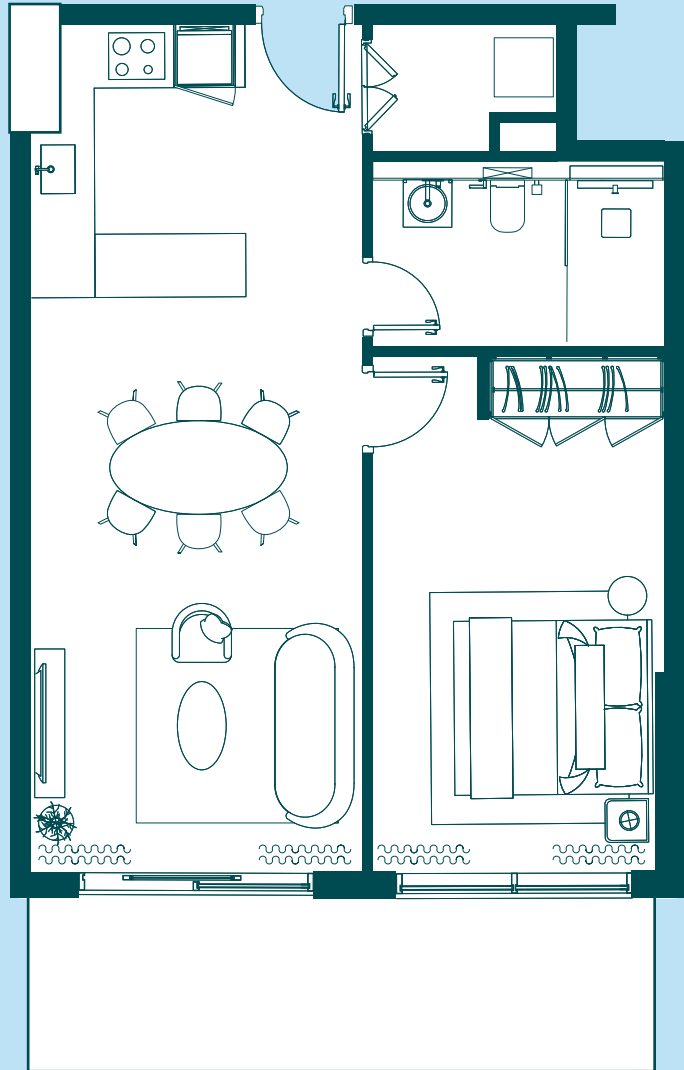
- ❶ **INTERNAL AREA:** 616.45 Sq.Ft. (57.27 Sq.M.)
- ❷ **BALCONY AREA:** 134.66 Sq. Ft. (12.51 Sq.M.)
- ❸ **TOTAL AREA:** 751.11 Sq. Ft. (69.78 Sq.M.)



1. All dimensions are in imperial and metric, and measured to structural elements and exclude wall finishes and construction tolerances. 2. All materials, dimensions, and drawings are approximate only. 3. Information is subject to change without notice at developer's absolute discretion. 4. Actual area may vary from the stated area. 5. Drawings not to scale. 6. All images used are for illustrative purposes only and do not represent the actual size, features, specifications, fittings, and furnishings. 7. The developer reserves the right to make revisions / alterations, at its absolute discretion, without any liability whatsoever.

More information at:  
[rise-residences.com](http://rise-residences.com)





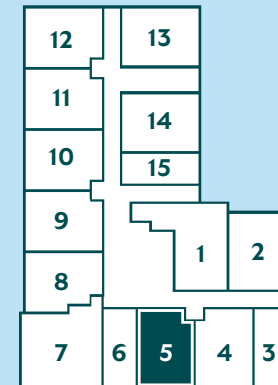
# 1 BED

Unit 105

749 Sq.ft

## DIMENSIONS

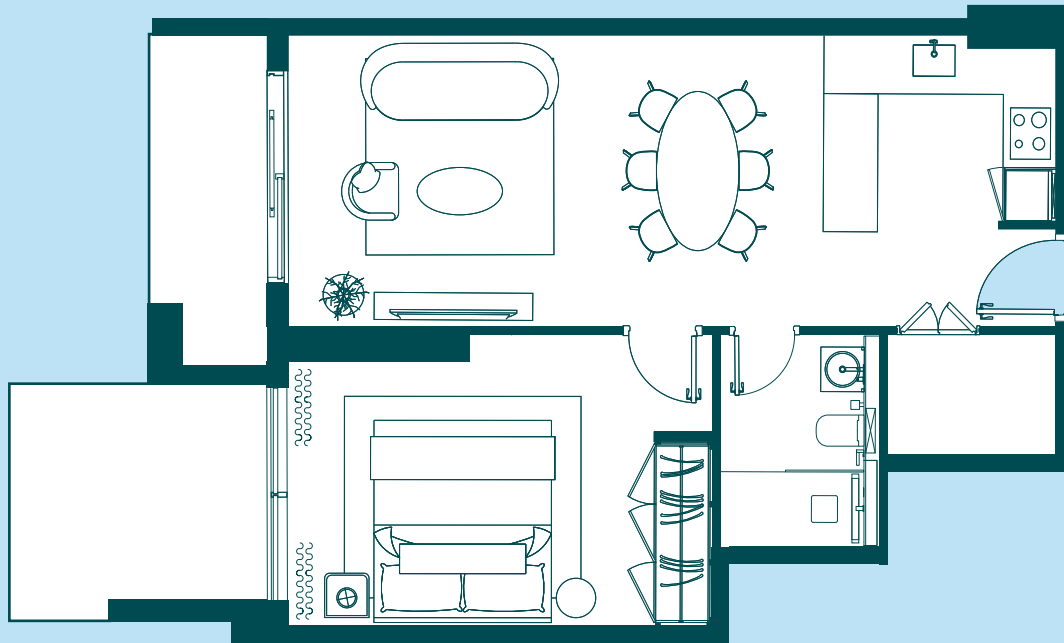
- ❶ **INTERNAL AREA:** 616.45 Sq.Ft. (57.27 Sq.M.)
- ❷ **BALCONY AREA:** 132.61 Sq. Ft. (12.32 Sq.M.)
- ❸ **TOTAL AREA:** 749.06 Sq. Ft. (69.59 Sq.M.)



1. All dimensions are in imperial and metric, and measured to structural elements and exclude wall finishes and construction tolerances. 2. All materials, dimensions, and drawings are approximate only. 3. Information is subject to change without notice at developer's absolute discretion. 4. Actual area may vary from the stated area. 5. Drawings not to scale. 6. All images used are for illustrative purposes only and do not represent the actual size, features, specifications, fittings, and furnishings. 7. The developer reserves the right to make revisions / alterations, at its absolute discretion, without any liability whatsoever.

More information at:  
[rise-residences.com](http://rise-residences.com)





More information at:  
[rise-residences.com](http://rise-residences.com)

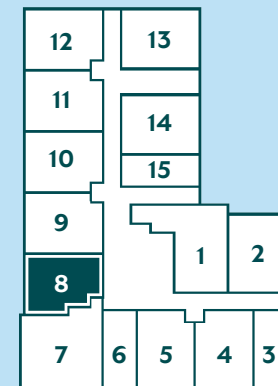
# 1 BED

Unit 108

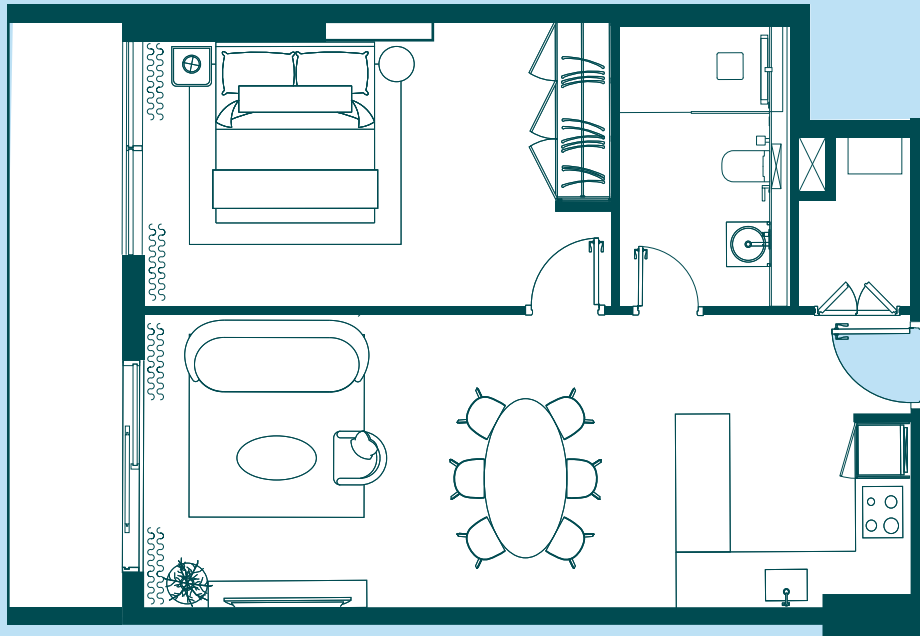
769 Sq.ft

## DIMENSIONS

- ❶ **INTERNAL AREA:** 599.55 Sq.Ft. (55.70 Sq.M.)
- ❷ **BALCONY AREA:** 168.99 Sq. Ft. (15.70 Sq.M.)
- ❸ **TOTAL AREA:** 768.54 Sq. Ft. (71.40 Sq.M.)



1. All dimensions are in imperial and metric, and measured to structural elements and exclude wall finishes and construction tolerances. 2. All materials, dimensions, and drawings are approximate only. 3. Information is subject to change without notice at developer's absolute discretion. 4. Actual area may vary from the stated area. 5. Drawings not to scale. 6. All images used are for illustrative purposes only and do not represent the actual size, features, specifications, fittings, and furnishings. 7. The developer reserves the right to make revisions / alterations, at its absolute discretion, without any liability whatsoever.



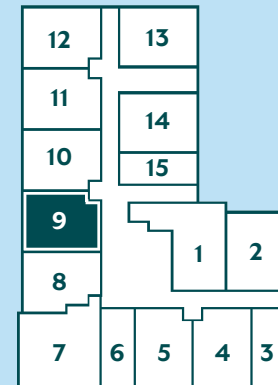
# 1 BED

Unit 109

767 Sq.ft

## DIMENSIONS

- ❶ **INTERNAL AREA:** 635.29 Sq.Ft. (59.02 Sq.M.)
- ❷ **BALCONY AREA:** 131.97 Sq. Ft. (12.26 Sq.M.)
- ❸ **TOTAL AREA:** 767.25 Sq. Ft. (71.28 Sq.M.)



1. All dimensions are in imperial and metric, and measured to structural elements and exclude wall finishes and construction tolerances. 2. All materials, dimensions, and drawings are approximate only. 3. Information is subject to change without notice at developer's absolute discretion. 4. Actual area may vary from the stated area. 5. Drawings not to scale. 6. All images used are for illustrative purposes only and do not represent the actual size, features, specifications, fittings, and furnishings. 7. The developer reserves the right to make revisions / alterations, at its absolute discretion, without any liability whatsoever.



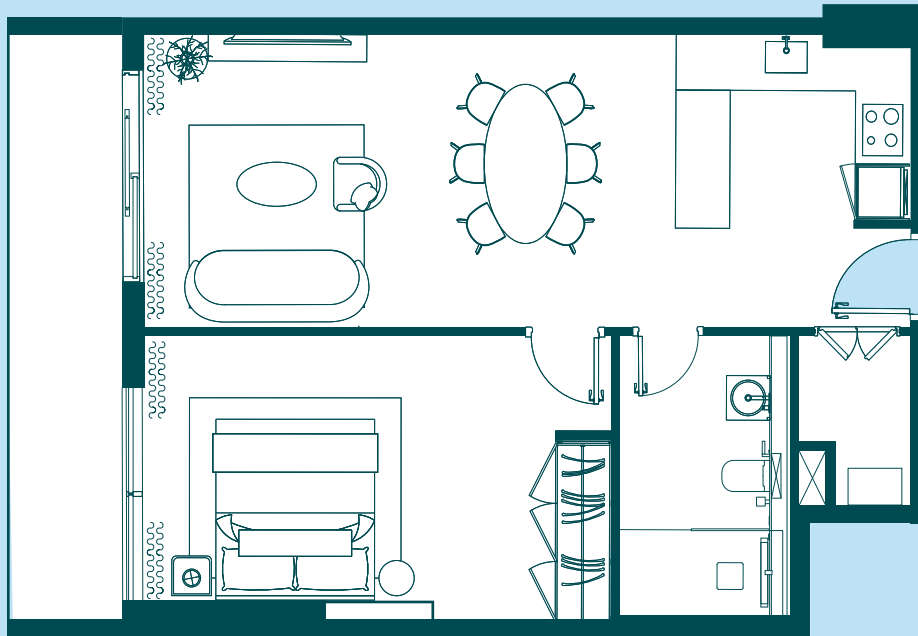
More information at:  
[rise-residences.com](http://rise-residences.com)



# 1 BED

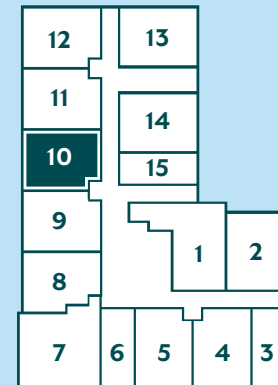
Unit 110

772 Sq.ft



## DIMENSIONS

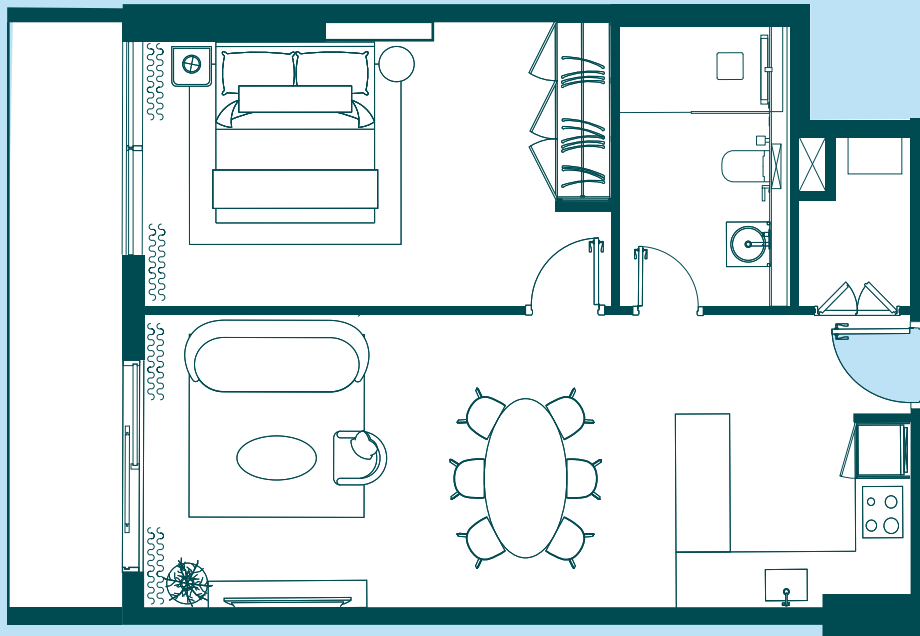
- ❶ **INTERNAL AREA:** 640.02 Sq.Ft. (59.46 Sq.M.)
- ❷ **BALCONY AREA:** 131.97 Sq. Ft. (12.26 Sq.M.)
- ❸ **TOTAL AREA:** 771.99 Sq. Ft. (71.72 Sq.M.)



1. All dimensions are in imperial and metric, and measured to structural elements and exclude wall finishes and construction tolerances. 2. All materials, dimensions, and drawings are approximate only. 3. Information is subject to change without notice at developer's absolute discretion. 4. Actual area may vary from the stated area. 5. Drawings not to scale. 6. All images used are for illustrative purposes only and do not represent the actual size, features, specifications, fittings, and furnishings. 7. The developer reserves the right to make revisions / alterations, at its absolute discretion, without any liability whatsoever.



More information at:  
[rise-residences.com](http://rise-residences.com)



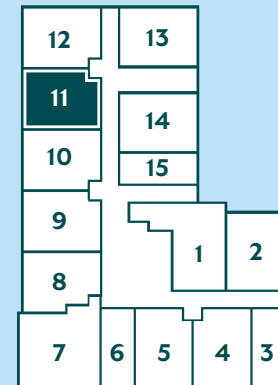
# 1 BED

Unit 111

770 Sq.ft

## DIMENSIONS

- ❶ **INTERNAL AREA:** 637.65 Sq.Ft. (59.24 Sq.M.)
- ❷ **BALCONY AREA:** 131.97 Sq. Ft. (12.26 Sq.M.)
- ❸ **TOTAL AREA:** 769.62 Sq. Ft. (71.50 Sq.M.)



1. All dimensions are in imperial and metric, and measured to structural elements and exclude wall finishes and construction tolerances. 2. All materials, dimensions, and drawings are approximate only. 3. Information is subject to change without notice at developer's absolute discretion. 4. Actual area may vary from the stated area. 5. Drawings not to scale. 6. All images used are for illustrative purposes only and do not represent the actual size, features, specifications, fittings, and furnishings. 7. The developer reserves the right to make revisions / alterations, at its absolute discretion, without any liability whatsoever.

More information at:  
[rise-residences.com](http://rise-residences.com)



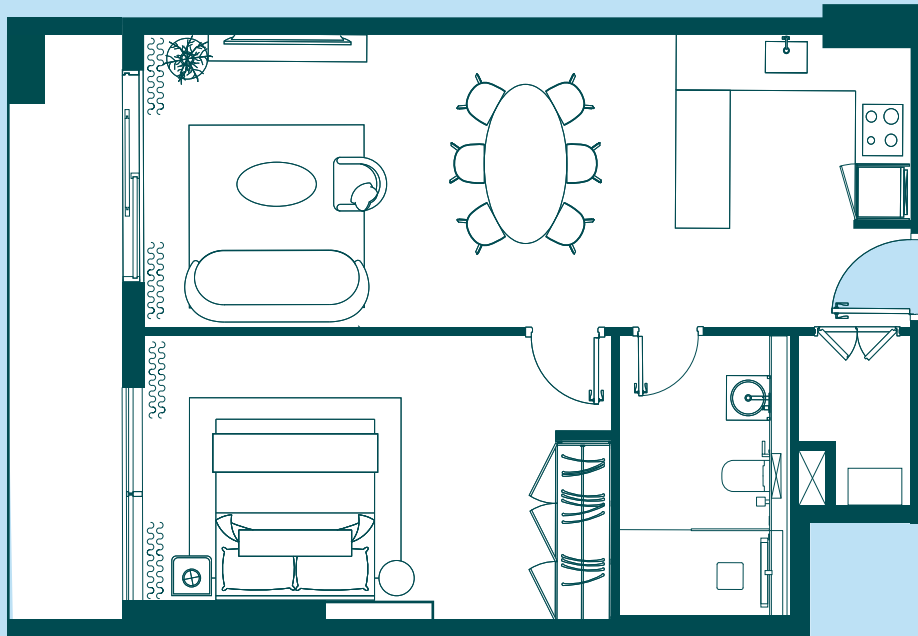




# 1 BED

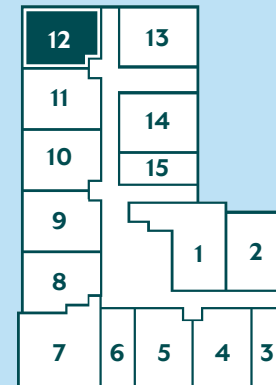
Unit 112

767 Sq.ft



## DIMENSIONS

- ❶ **INTERNAL AREA:** 635.82 Sq.Ft. (59.07 Sq.M.)
- ❷ **BALCONY AREA:** 131.10 Sq. Ft. (12.18 Sq.M.)
- ❸ **TOTAL AREA:** 766.93 Sq. Ft. (71.25 Sq.M.)



1. All dimensions are in imperial and metric, and measured to structural elements and exclude wall finishes and construction tolerances. 2. All materials, dimensions, and drawings are approximate only. 3. Information is subject to change without notice at developer's absolute discretion. 4. Actual area may vary from the stated area. 5. Drawings not to scale. 6. All images used are for illustrative purposes only and do not represent the actual size, features, specifications, fittings, and furnishings. 7. The developer reserves the right to make revisions / alterations, at its absolute discretion, without any liability whatsoever.



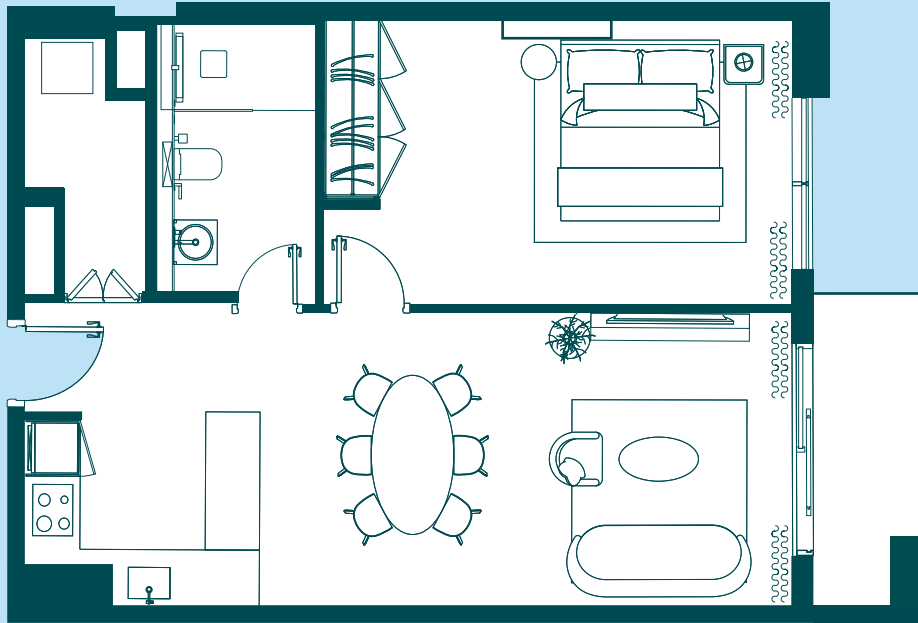
More information at:  
[rise-residences.com](http://rise-residences.com)



# 1 BED

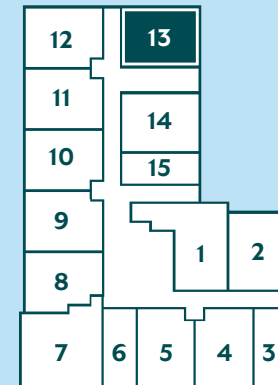
Unit 113

806 Sq.ft



## DIMENSIONS

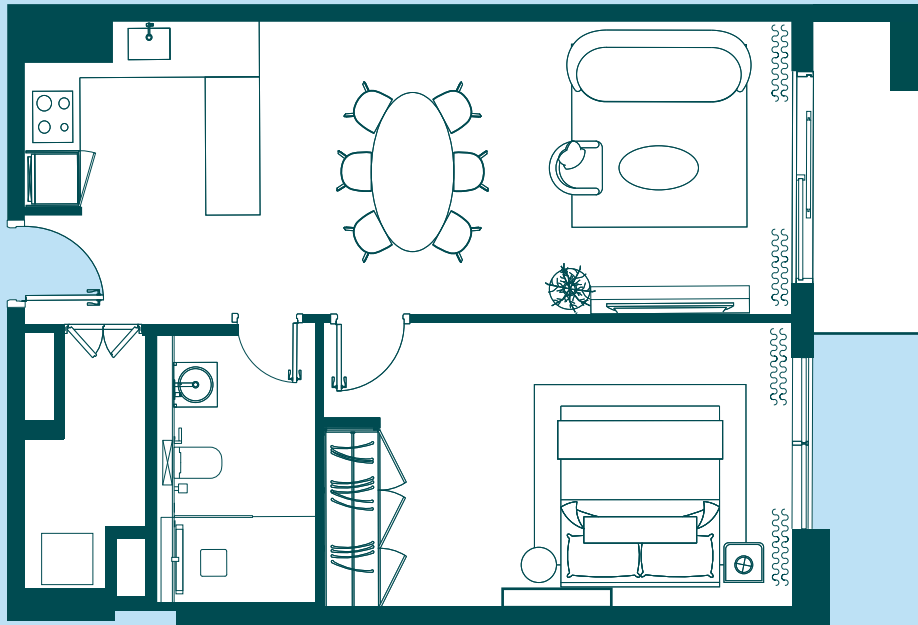
- ❶ **INTERNAL AREA:** 631.52 Sq.Ft. (58.67 Sq.M.)
- ❷ **BALCONY AREA:** 174.38 Sq. Ft. (16.20 Sq.M.)
- ❸ **TOTAL AREA:** 805.89 Sq. Ft. (74.87 Sq.M.)



1. All dimensions are in imperial and metric, and measured to structural elements and exclude wall finishes and construction tolerances. 2. All materials, dimensions, and drawings are approximate only. 3. Information is subject to change without notice at developer's absolute discretion. 4. Actual area may vary from the stated area. 5. Drawings not to scale. 6. All images used are for illustrative purposes only and do not represent the actual size, features, specifications, fittings, and furnishings. 7. The developer reserves the right to make revisions / alterations, at its absolute discretion, without any liability whatsoever.

More information at:  
[rise-residences.com](http://rise-residences.com)





More information at:  
[rise-residences.com](http://rise-residences.com)

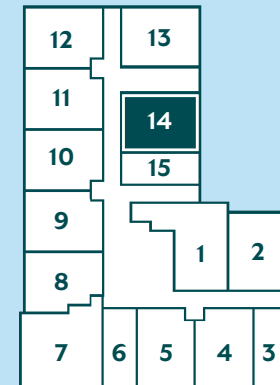
# 1 BED

Unit 114

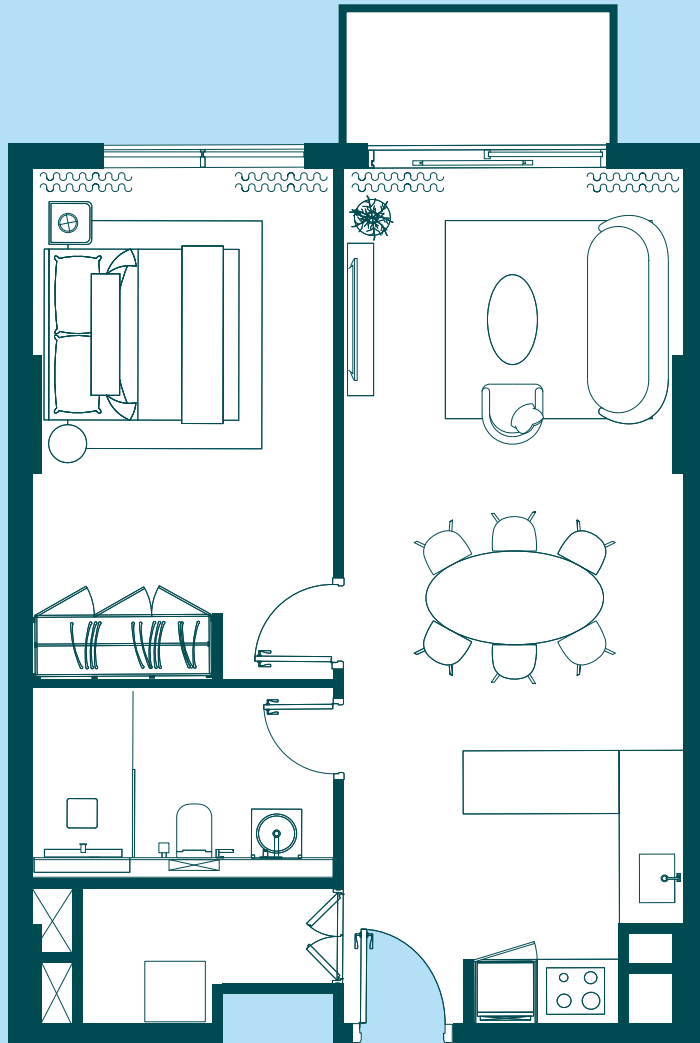
794 Sq.ft

## DIMENSIONS

- ❶ **INTERNAL AREA:** 620.65 Sq.Ft. (57.66 Sq.M.)
- ❷ **BALCONY AREA:** 173.41 Sq. Ft. (16.11 Sq.M.)
- ❸ **TOTAL AREA:** 794.05 Sq. Ft. (73.77 Sq.M.)



1. All dimensions are in imperial and metric, and measured to structural elements and exclude wall finishes and construction tolerances. 2. All materials, dimensions, and drawings are approximate only. 3. Information is subject to change without notice at developer's absolute discretion. 4. Actual area may vary from the stated area. 5. Drawings not to scale. 6. All images used are for illustrative purposes only and do not represent the actual size, features, specifications, fittings, and furnishings. 7. The developer reserves the right to make revisions / alterations, at its absolute discretion, without any liability whatsoever.



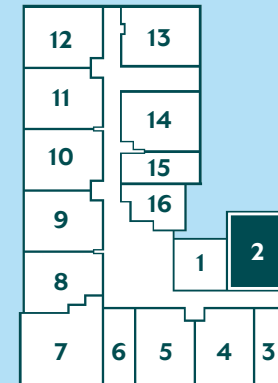
# 1 BED

Unit 202/902

653 Sq.ft

## DIMENSIONS

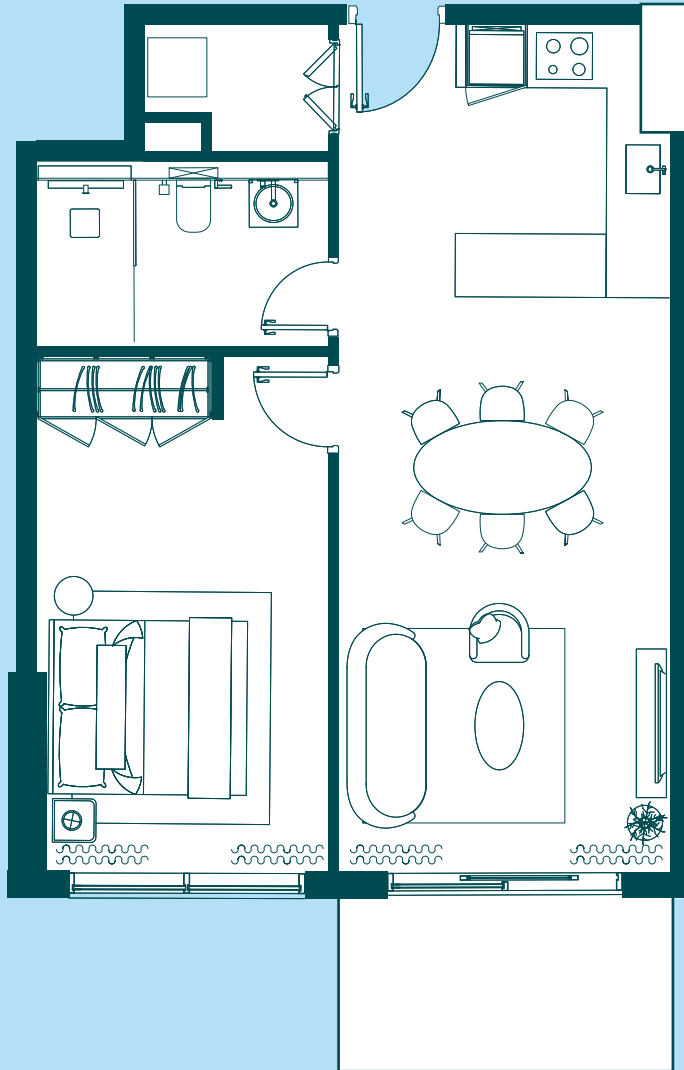
- ❶ **INTERNAL AREA:** 603.10 Sq.Ft. (56.03 Sq.M.)
- ❷ **BALCONY AREA:** 49.62 Sq. Ft. (4.61 Sq.M.)
- ❸ **TOTAL AREA:** 652.72 Sq. Ft. (60.64 Sq.M.)



1. All dimensions are in imperial and metric, and measured to structural elements and exclude wall finishes and construction tolerances. 2. All materials, dimensions, and drawings are approximate only. 3. Information is subject to change without notice at developer's absolute discretion. 4. Actual area may vary from the stated area. 5. Drawings not to scale. 6. All images used are for illustrative purposes only and do not represent the actual size, features, specifications, fittings, and furnishings. 7. The developer reserves the right to make revisions / alterations, at its absolute discretion, without any liability whatsoever.

More information at:  
[rise-residences.com](http://rise-residences.com)





More information at:  
[rise-residences.com](http://rise-residences.com)

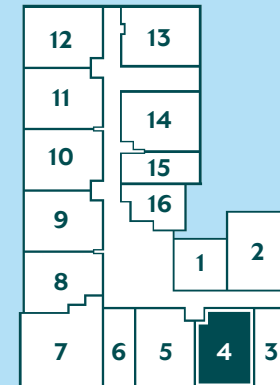
# 1 BED

Unit 204/904

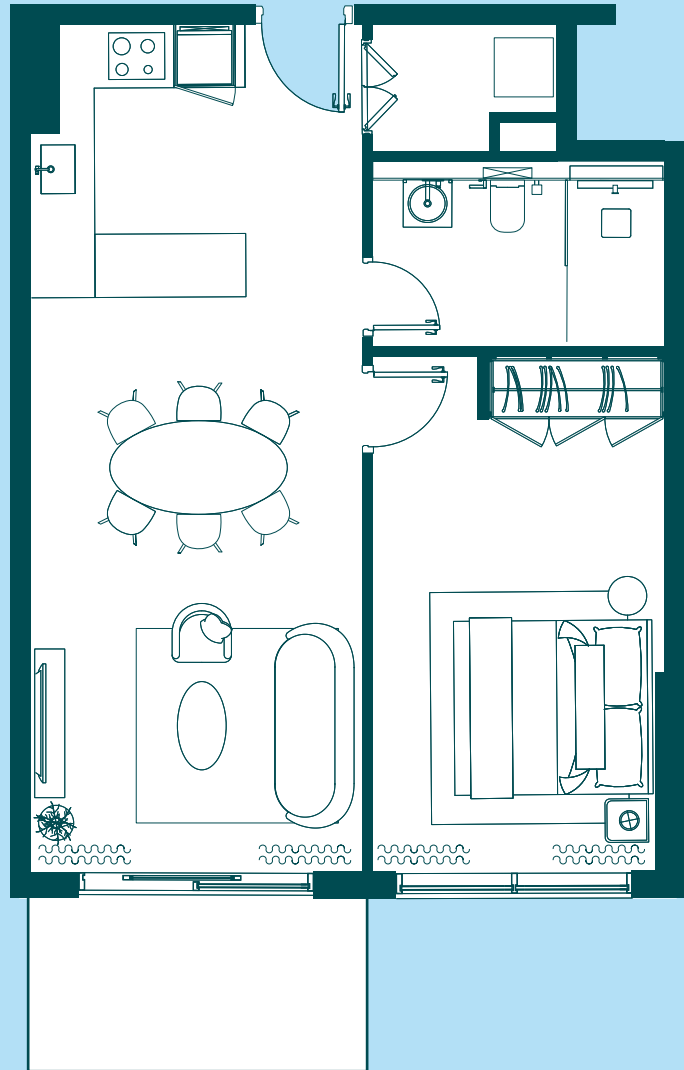
696 Sq.ft

## DIMENSIONS

- ❶ **INTERNAL AREA:** 616.34 Sq.Ft. (57.26 Sq.M.)
- ❷ **BALCONY AREA:** 79.98 Sq. Ft. (7.43 Sq.M.)
- ❸ **TOTAL AREA:** 696.32 Sq. Ft. (64.69 Sq.M.)



1. All dimensions are in imperial and metric, and measured to structural elements and exclude wall finishes and construction tolerances. 2. All materials, dimensions, and drawings are approximate only. 3. Information is subject to change without notice at developer's absolute discretion. 4. Actual area may vary from the stated area. 5. Drawings not to scale. 6. All images used are for illustrative purposes only and do not represent the actual size, features, specifications, fittings, and furnishings. 7. The developer reserves the right to make revisions / alterations, at its absolute discretion, without any liability whatsoever.



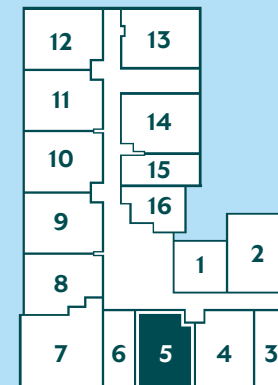
# 1 BED

Unit 205/905

682 Sq.ft

## DIMENSIONS

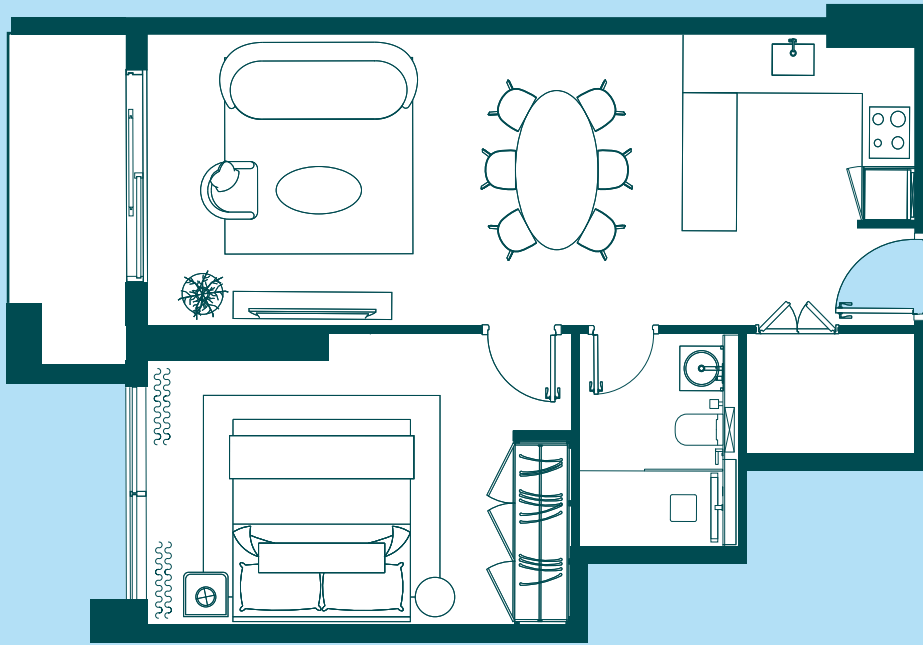
- ❶ **INTERNAL AREA:** 616.34 Sq.Ft. (57.26 Sq.M.)
- ❷ **BALCONY AREA:** 65.55 Sq. Ft. (6.09 Sq.M.)
- ❸ **TOTAL AREA:** 681.89 Sq. Ft. (63.35 Sq.M.)



1. All dimensions are in imperial and metric, and measured to structural elements and exclude wall finishes and construction tolerances. 2. All materials, dimensions, and drawings are approximate only. 3. Information is subject to change without notice at developer's absolute discretion. 4. Actual area may vary from the stated area. 5. Drawings not to scale. 6. All images used are for illustrative purposes only and do not represent the actual size, features, specifications, fittings, and furnishings. 7. The developer reserves the right to make revisions / alterations, at its absolute discretion, without any liability whatsoever.

More information at:  
[rise-residences.com](http://rise-residences.com)





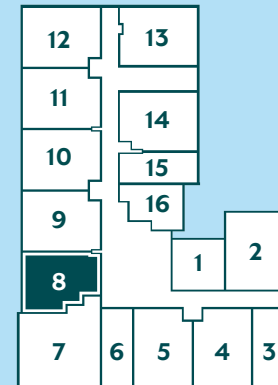
# 1 BED

Unit 208/908

682 Sq.ft

## DIMENSIONS

- ❶ **INTERNAL AREA:** 599.55 Sq.Ft. (55.70 Sq.M.)
- ❷ **BALCONY AREA:** 82.02 Sq. Ft. (7.62 Sq.M.)
- ❸ **TOTAL AREA:** 681.57 Sq. Ft. (63.32 Sq.M.)



1. All dimensions are in imperial and metric, and measured to structural elements and exclude wall finishes and construction tolerances. 2. All materials, dimensions, and drawings are approximate only. 3. Information is subject to change without notice at developer's absolute discretion. 4. Actual area may vary from the stated area. 5. Drawings not to scale. 6. All images used are for illustrative purposes only and do not represent the actual size, features, specifications, fittings, and furnishings. 7. The developer reserves the right to make revisions / alterations, at its absolute discretion, without any liability whatsoever.

More information at:  
[rise-residences.com](http://rise-residences.com)

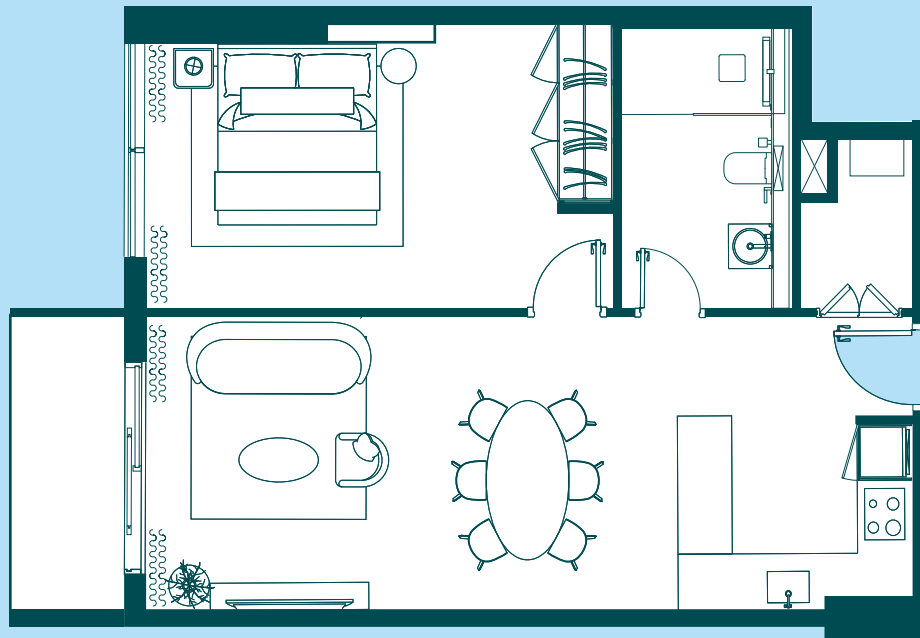




# 1 BED

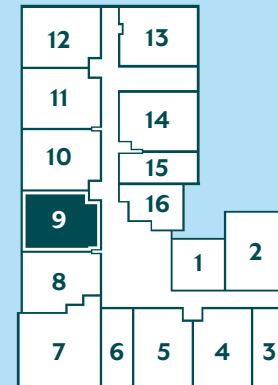
Unit 209/909

711 Sq.ft



## DIMENSIONS

- ❶ **INTERNAL AREA:** 635.29 Sq.Ft. (59.02 Sq.M.)
- ❷ **BALCONY AREA:** 76.10 Sq. Ft. (7.07 Sq.M.)
- ❸ **TOTAL AREA:** 711.39 Sq. Ft. (66.09 Sq.M.)



1. All dimensions are in imperial and metric, and measured to structural elements and exclude wall finishes and construction tolerances. 2. All materials, dimensions, and drawings are approximate only. 3. Information is subject to change without notice at developer's absolute discretion. 4. Actual area may vary from the stated area. 5. Drawings not to scale. 6. All images used are for illustrative purposes only and do not represent the actual size, features, specifications, fittings, and furnishings. 7. The developer reserves the right to make revisions / alterations, at its absolute discretion, without any liability whatsoever.

More information at:  
[rise-residences.com](http://rise-residences.com)



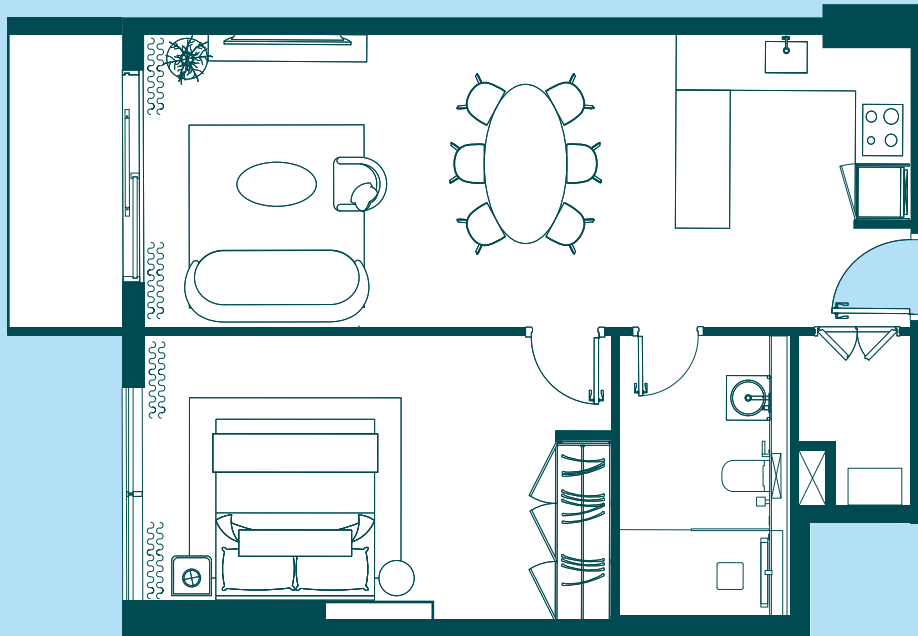




# 1 BED

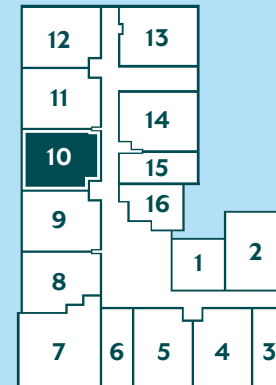
Unit 210/910

716 Sq.ft



## DIMENSIONS

- ❶ **INTERNAL AREA:** 640.02 Sq.Ft. (59.46 Sq.M.)
- ❷ **BALCONY AREA:** 76.10 Sq. Ft. (7.07 Sq.M.)
- ❸ **TOTAL AREA:** 716.12 Sq. Ft. (66.53 Sq.M.)



1. All dimensions are in imperial and metric, and measured to structural elements and exclude wall finishes and construction tolerances. 2. All materials, dimensions, and drawings are approximate only. 3. Information is subject to change without notice at developer's absolute discretion. 4. Actual area may vary from the stated area. 5. Drawings not to scale. 6. All images used are for illustrative purposes only and do not represent the actual size, features, specifications, fittings, and furnishings. 7. The developer reserves the right to make revisions / alterations, at its absolute discretion, without any liability whatsoever.



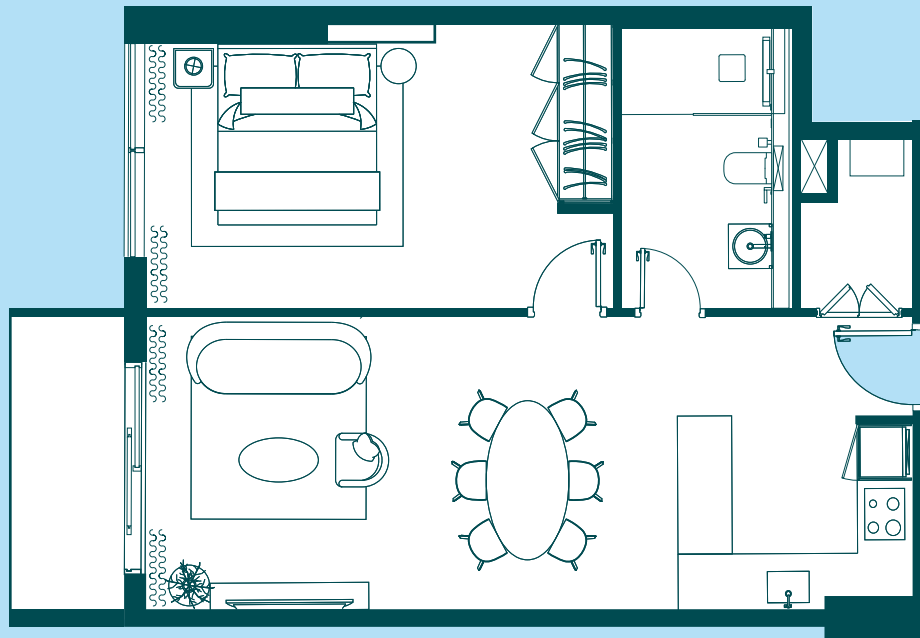
More information at:  
[rise-residences.com](http://rise-residences.com)



# 1 BED

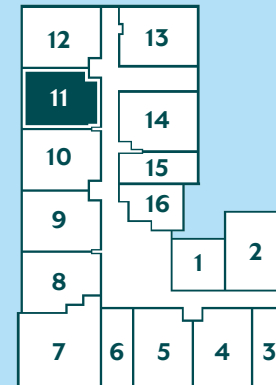
Unit 211/911

714 Sq.ft



## DIMENSIONS

- ❶ **INTERNAL AREA:** 637.65 Sq.Ft. (59.24 Sq.M.)
- ❷ **BALCONY AREA:** 76.10 Sq. Ft. (7.07 Sq.M.)
- ❸ **TOTAL AREA:** 713.75 Sq. Ft. (66.31 Sq.M.)



1. All dimensions are in imperial and metric, and measured to structural elements and exclude wall finishes and construction tolerances. 2. All materials, dimensions, and drawings are approximate only. 3. Information is subject to change without notice at developer's absolute discretion. 4. Actual area may vary from the stated area. 5. Drawings not to scale. 6. All images used are for illustrative purposes only and do not represent the actual size, features, specifications, fittings, and furnishings. 7. The developer reserves the right to make revisions / alterations, at its absolute discretion, without any liability whatsoever.

More information at:  
[rise-residences.com](http://rise-residences.com)

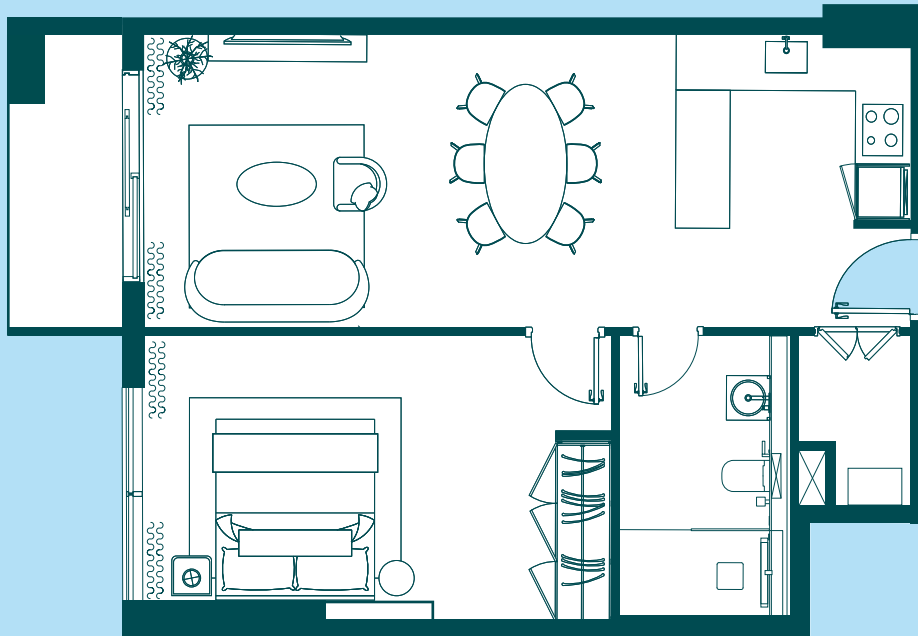




# 1 BED

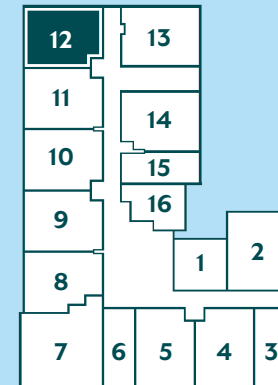
Unit 212/912

711 Sq.ft



## DIMENSIONS

- ❶ **INTERNAL AREA:** 635.82 Sq.Ft. (59.07 Sq.M.)
- ❷ **BALCONY AREA:** 75.24 Sq. Ft. (6.99 Sq.M.)
- ❸ **TOTAL AREA:** 711.06 Sq. Ft. (66.06 Sq.M.)



1. All dimensions are in imperial and metric, and measured to structural elements and exclude wall finishes and construction tolerances. 2. All materials, dimensions, and drawings are approximate only. 3. Information is subject to change without notice at developer's absolute discretion. 4. Actual area may vary from the stated area. 5. Drawings not to scale. 6. All images used are for illustrative purposes only and do not represent the actual size, features, specifications, fittings, and furnishings. 7. The developer reserves the right to make revisions / alterations, at its absolute discretion, without any liability whatsoever.



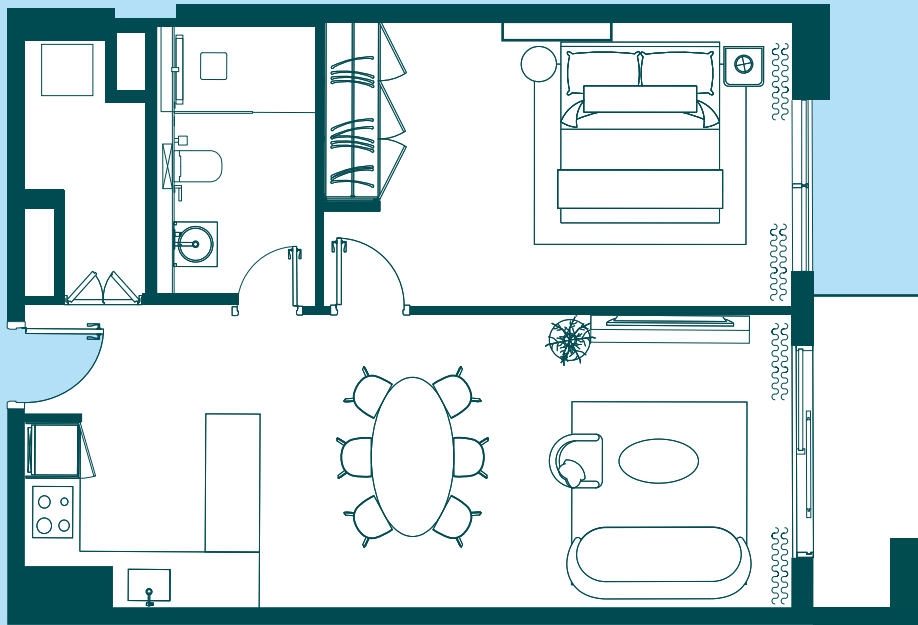
More information at:  
[rise-residences.com](http://rise-residences.com)



# 1 BED

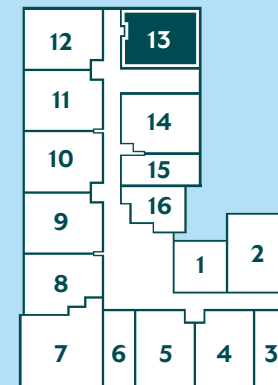
Unit 213/913

706 Sq.ft



## DIMENSIONS

- ❶ **INTERNAL AREA:** 631.52 Sq.Ft. (58.67 Sq.M.)
- ❷ **BALCONY AREA:** 74.27 Sq. Ft. (6.90 Sq.M.)
- ❸ **TOTAL AREA:** 705.79 Sq. Ft. (65.57 Sq.M.)



1. All dimensions are in imperial and metric, and measured to structural elements and exclude wall finishes and construction tolerances. 2. All materials, dimensions, and drawings are approximate only. 3. Information is subject to change without notice at developer's absolute discretion. 4. Actual area may vary from the stated area. 5. Drawings not to scale. 6. All images used are for illustrative purposes only and do not represent the actual size, features, specifications, fittings, and furnishings. 7. The developer reserves the right to make revisions / alterations, at its absolute discretion, without any liability whatsoever.

More information at:  
[rise-residences.com](http://rise-residences.com)

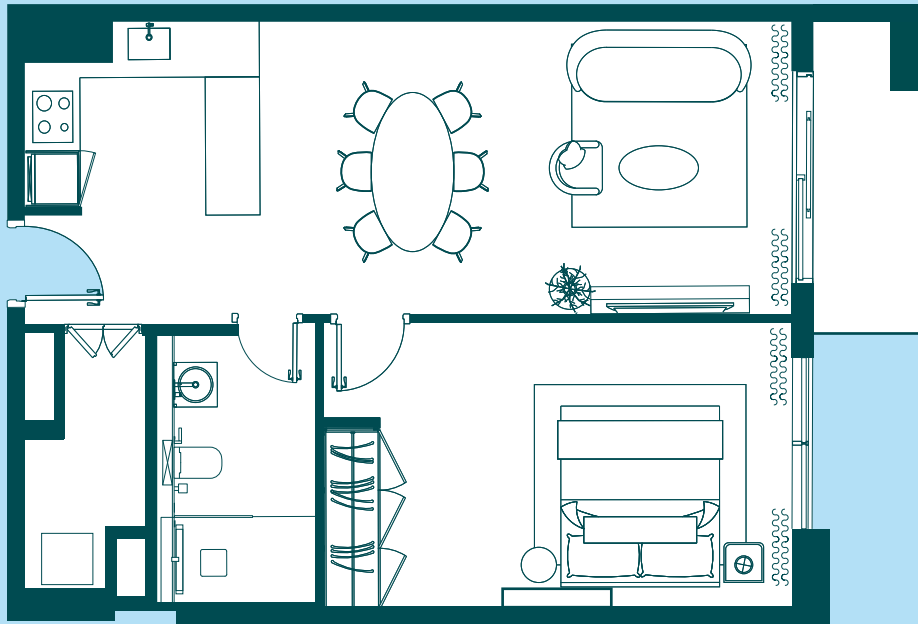




# 1 BED

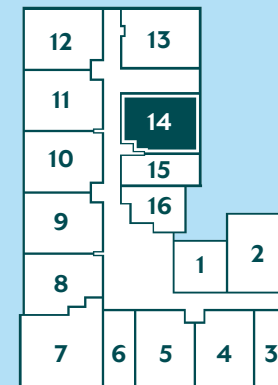
Unit 214/914

693 Sq.ft



## DIMENSIONS

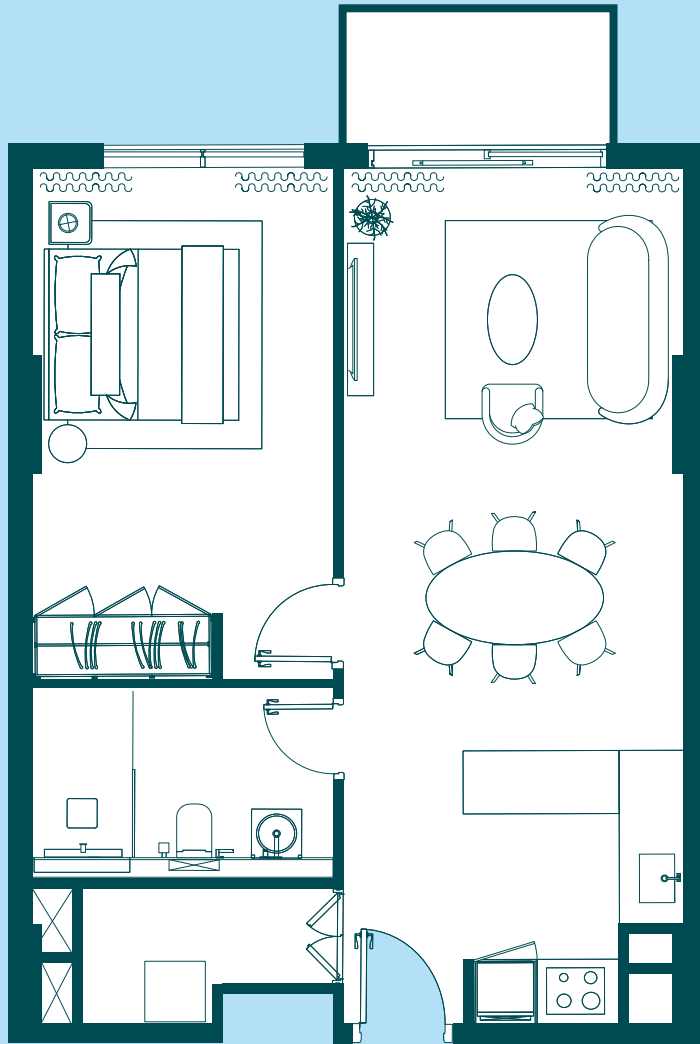
- ❶ **INTERNAL AREA:** 620.65 Sq.Ft. (57.66 Sq.M.)
- ❷ **BALCONY AREA:** 72.33 Sq. Ft. (6.72 Sq.M.)
- ❸ **TOTAL AREA:** 692.98 Sq. Ft. (64.38 Sq.M.)



1. All dimensions are in imperial and metric, and measured to structural elements and exclude wall finishes and construction tolerances. 2. All materials, dimensions, and drawings are approximate only. 3. Information is subject to change without notice at developer's absolute discretion. 4. Actual area may vary from the stated area. 5. Drawings not to scale. 6. All images used are for illustrative purposes only and do not represent the actual size, features, specifications, fittings, and furnishings. 7. The developer reserves the right to make revisions / alterations, at its absolute discretion, without any liability whatsoever.

More information at:  
[rise-residences.com](http://rise-residences.com)





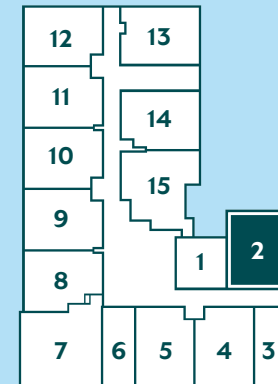
# 1 BED

Unit 1002/1102

653 Sq.ft

## DIMENSIONS

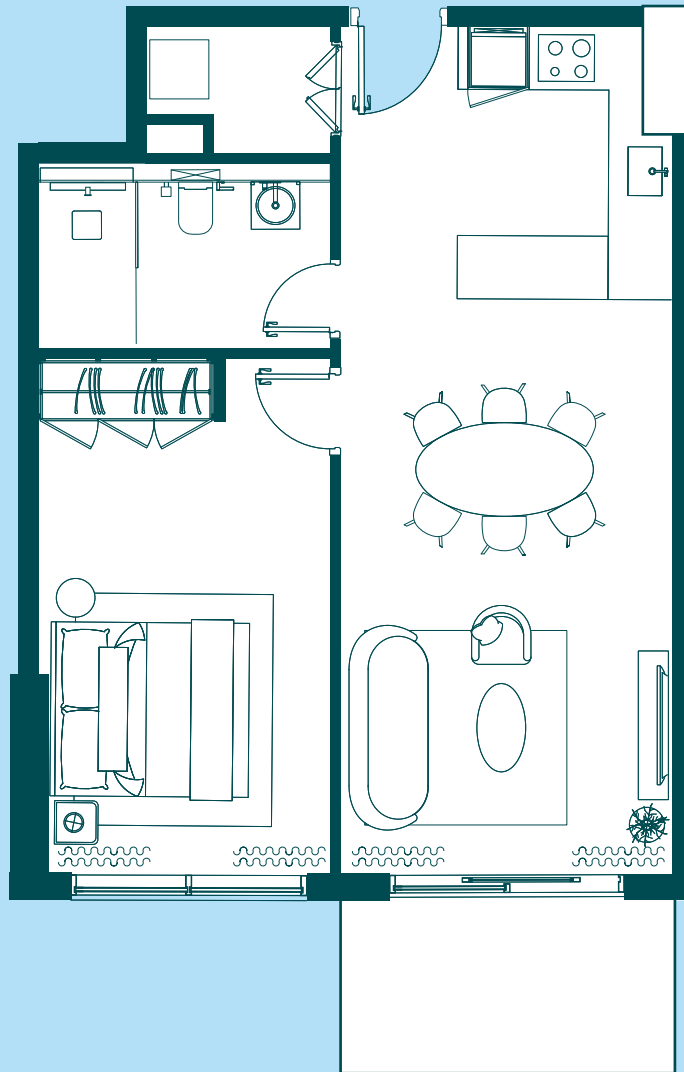
- ❶ **INTERNAL AREA:** 603.10 Sq.Ft. (56.03 Sq.M.)
- ❷ **BALCONY AREA:** 49.62 Sq. Ft. (4.61 Sq.M.)
- ❸ **TOTAL AREA:** 652.72 Sq. Ft. (60.64 Sq.M.)



1. All dimensions are in imperial and metric, and measured to structural elements and exclude wall finishes and construction tolerances. 2. All materials, dimensions, and drawings are approximate only. 3. Information is subject to change without notice at developer's absolute discretion. 4. Actual area may vary from the stated area. 5. Drawings not to scale. 6. All images used are for illustrative purposes only and do not represent the actual size, features, specifications, fittings, and furnishings. 7. The developer reserves the right to make revisions / alterations, at its absolute discretion, without any liability whatsoever.

More information at:  
[rise-residences.com](http://rise-residences.com)



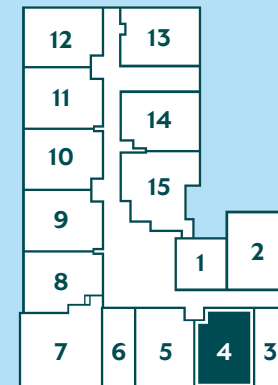


# 1 BED

Unit 1004/1104 696 Sq.ft

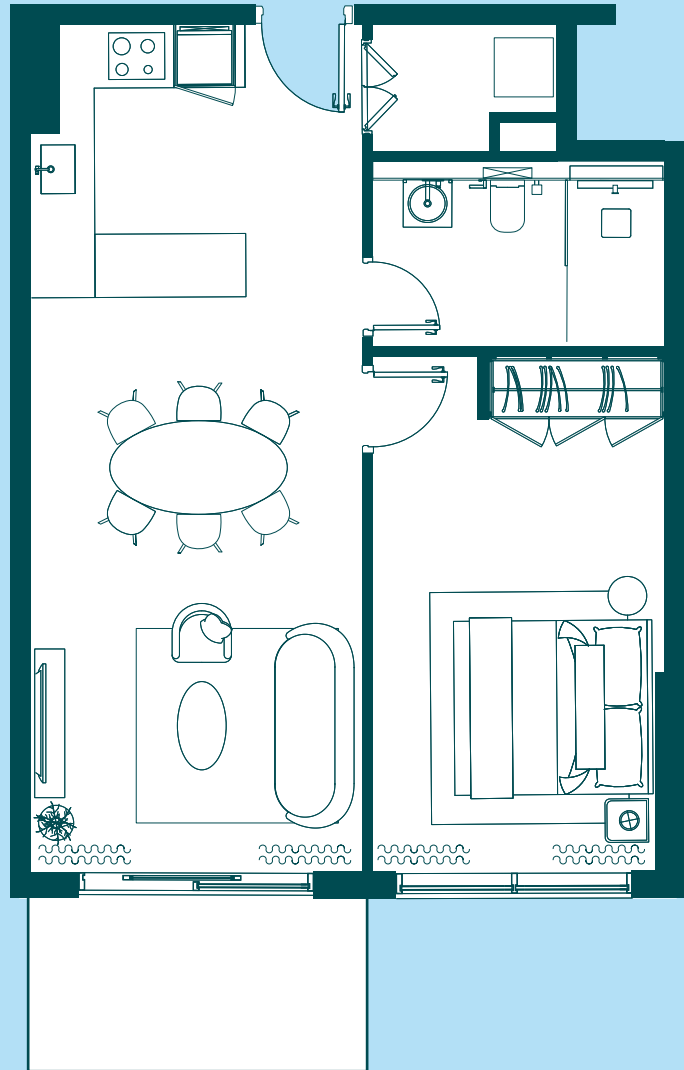
## DIMENSIONS

- ❶ INTERNAL AREA: 616.34 Sq.Ft. (57.26 Sq.M.)
- ❷ BALCONY AREA: 79.98 Sq. Ft. (7.43 Sq.M.)
- ❸ TOTAL AREA: 696.32 Sq. Ft. (64.69 Sq.M.)



More information at:  
[rise-residences.com](http://rise-residences.com)

1. All dimensions are in imperial and metric, and measured to structural elements and exclude wall finishes and construction tolerances. 2. All materials, dimensions, and drawings are approximate only. 3. Information is subject to change without notice at developer's absolute discretion. 4. Actual area may vary from the stated area. 5. Drawings not to scale. 6. All images used are for illustrative purposes only and do not represent the actual size, features, specifications, fittings, and furnishings. 7. The developer reserves the right to make revisions / alterations, at its absolute discretion, without any liability whatsoever.

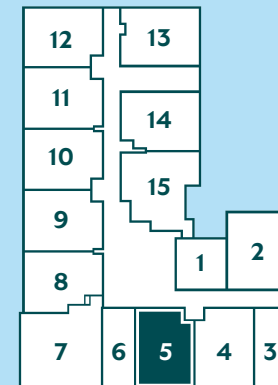


# 1 BED

Unit 1005/1105      682 Sq.ft

## DIMENSIONS

- ❶ **INTERNAL AREA:** 616.34 Sq.Ft. (57.26 Sq.M.)
- ❷ **BALCONY AREA:** 65.55 Sq. Ft. (6.09 Sq.M.)
- ❸ **TOTAL AREA:** 681.89 Sq. Ft. (63.35 Sq.M.)

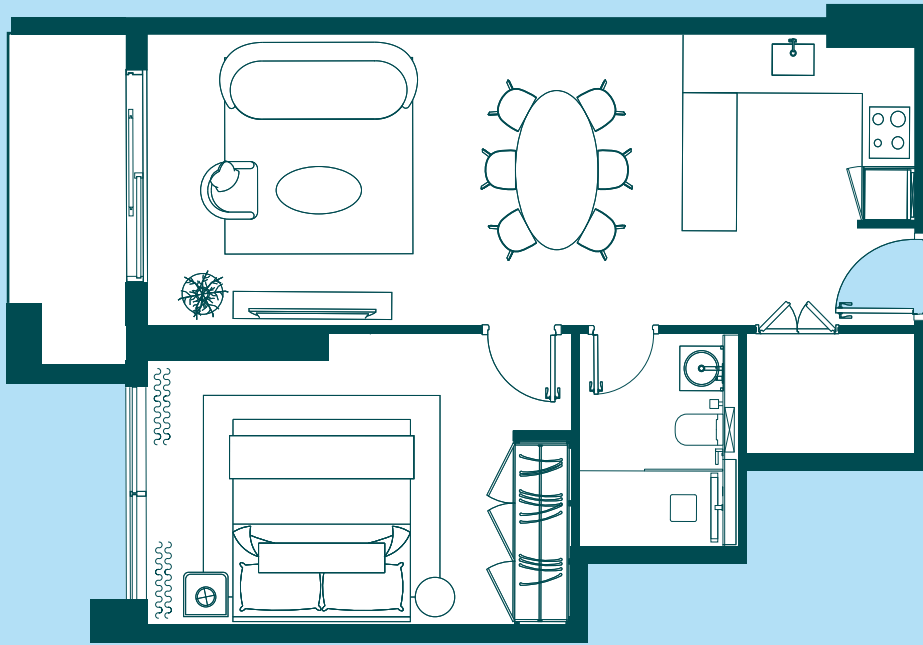


1. All dimensions are in imperial and metric, and measured to structural elements and exclude wall finishes and construction tolerances. 2. All materials, dimensions, and drawings are approximate only. 3. Information is subject to change without notice at developer's absolute discretion. 4. Actual area may vary from the stated area. 5. Drawings not to scale. 6. All images used are for illustrative purposes only and do not represent the actual size, features, specifications, fittings, and furnishings. 7. The developer reserves the right to make revisions / alterations, at its absolute discretion, without any liability whatsoever.

More information at:  
[rise-residences.com](http://rise-residences.com)





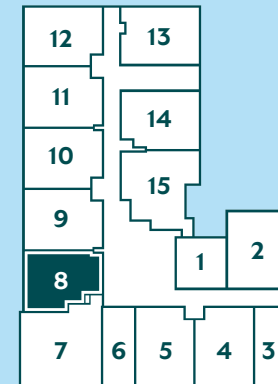


# 1 BED

Unit 1008/1108      682 Sq.ft

## DIMENSIONS

- ❶ **INTERNAL AREA:** 599.55 Sq.Ft. (55.70 Sq.M.)
- ❷ **BALCONY AREA:** 82.02 Sq. Ft. (7.62 Sq.M.)
- ❸ **TOTAL AREA:** 681.57 Sq. Ft. (63.32 Sq.M.)



1. All dimensions are in imperial and metric, and measured to structural elements and exclude wall finishes and construction tolerances. 2. All materials, dimensions, and drawings are approximate only. 3. Information is subject to change without notice at developer's absolute discretion. 4. Actual area may vary from the stated area. 5. Drawings not to scale. 6. All images used are for illustrative purposes only and do not represent the actual size, features, specifications, fittings, and furnishings. 7. The developer reserves the right to make revisions / alterations, at its absolute discretion, without any liability whatsoever.

More information at:  
[rise-residences.com](http://rise-residences.com)

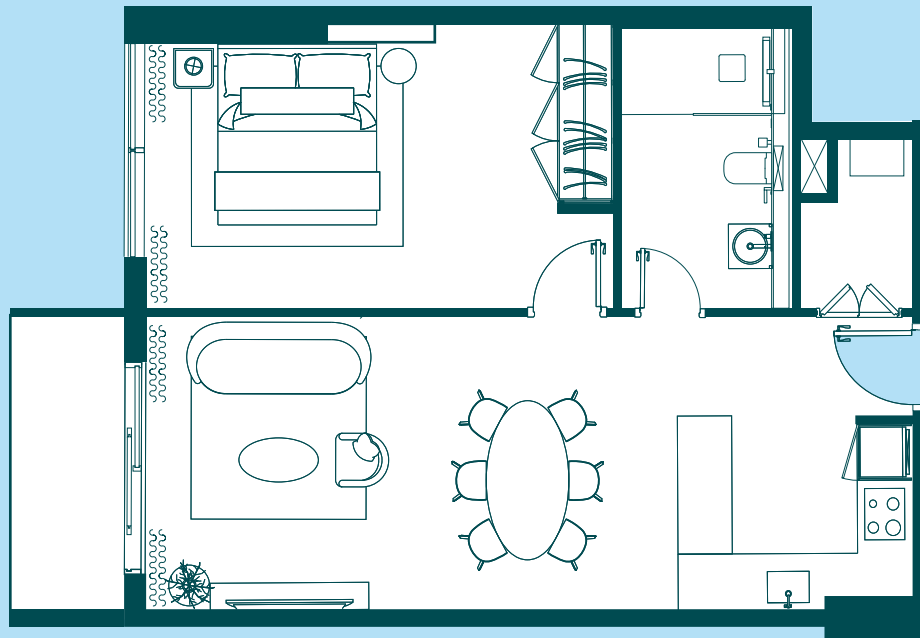




# 1 BED

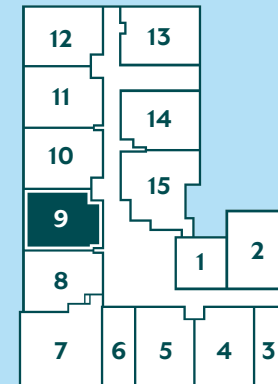
Unit 1009/1109

711 Sq.ft



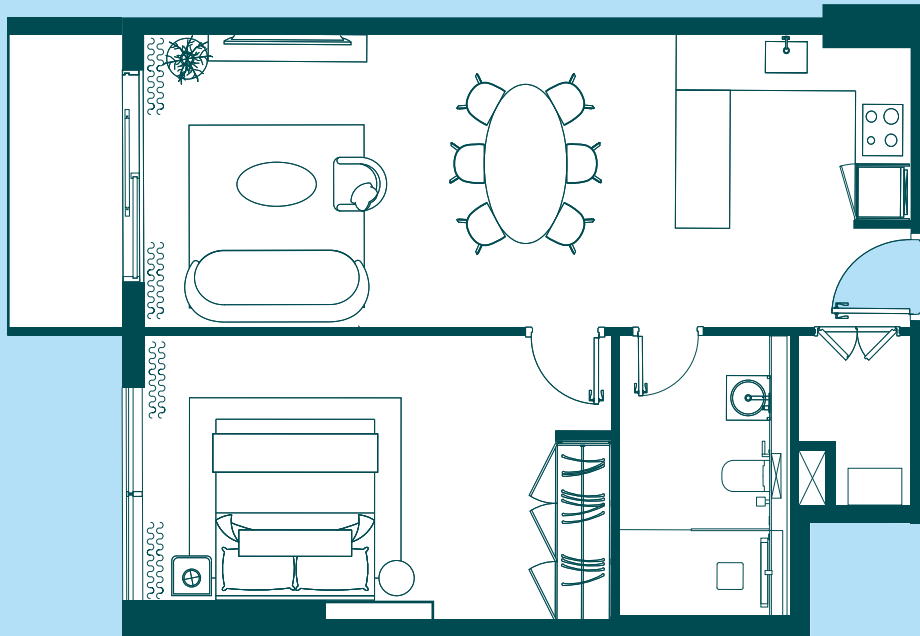
## DIMENSIONS

- ❶ **INTERNAL AREA:** 635.29 Sq.Ft. (59.02 Sq.M.)
- ❷ **BALCONY AREA:** 76.10 Sq. Ft. (7.07 Sq.M.)
- ❸ **TOTAL AREA:** 711.39 Sq. Ft. (66.09Sq.M.)



More information at:  
[rise-residences.com](http://rise-residences.com)

1. All dimensions are in imperial and metric, and measured to structural elements and exclude wall finishes and construction tolerances. 2. All materials, dimensions, and drawings are approximate only. 3. Information is subject to change without notice at developer's absolute discretion. 4. Actual area may vary from the stated area. 5. Drawings not to scale. 6. All images used are for illustrative purposes only and do not represent the actual size, features, specifications, fittings, and furnishings. 7. The developer reserves the right to make revisions / alterations, at its absolute discretion, without any liability whatsoever.



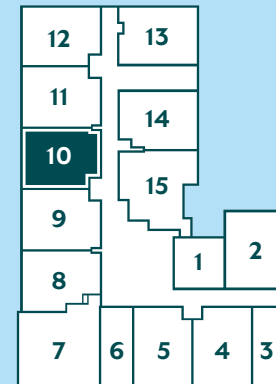
# 1 BED

Unit 1010/1110

716 Sq.ft

## DIMENSIONS

- ❶ **INTERNAL AREA:** 640.02 Sq.Ft. (59.46 Sq.M.)
- ❷ **BALCONY AREA:** 76.10 Sq. Ft. (7.07 Sq.M.)
- ❸ **TOTAL AREA:** 716.12 Sq. Ft. (66.53 Sq.M.)



1. All dimensions are in imperial and metric, and measured to structural elements and exclude wall finishes and construction tolerances. 2. All materials, dimensions, and drawings are approximate only. 3. Information is subject to change without notice at developer's absolute discretion. 4. Actual area may vary from the stated area. 5. Drawings not to scale. 6. All images used are for illustrative purposes only and do not represent the actual size, features, specifications, fittings, and furnishings. 7. The developer reserves the right to make revisions / alterations, at its absolute discretion, without any liability whatsoever.

More information at:  
[rise-residences.com](http://rise-residences.com)

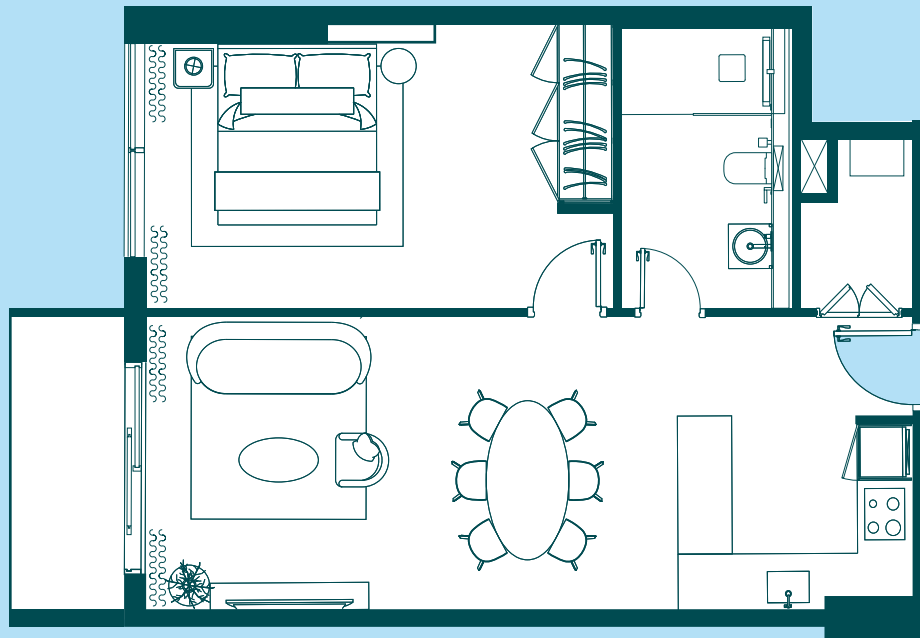




# 1 BED

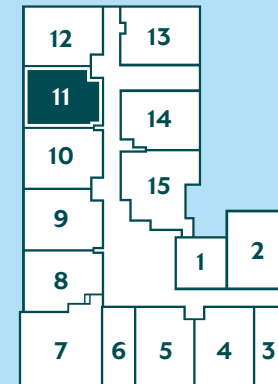
Unit 1011/1111

714 Sq.ft



## DIMENSIONS

- ❶ **INTERNAL AREA:** 637.65 Sq.Ft. (59.24 Sq.M.)
- ❷ **BALCONY AREA:** 76.10 Sq. Ft. (7.07 Sq.M.)
- ❸ **TOTAL AREA:** 713.75 Sq. Ft. (66.31 Sq.M.)



1. All dimensions are in imperial and metric, and measured to structural elements and exclude wall finishes and construction tolerances. 2. All materials, dimensions, and drawings are approximate only. 3. Information is subject to change without notice at developer's absolute discretion. 4. Actual area may vary from the stated area. 5. Drawings not to scale. 6. All images used are for illustrative purposes only and do not represent the actual size, features, specifications, fittings, and furnishings. 7. The developer reserves the right to make revisions / alterations, at its absolute discretion, without any liability whatsoever.

More information at:

[rise-residences.com](http://rise-residences.com)

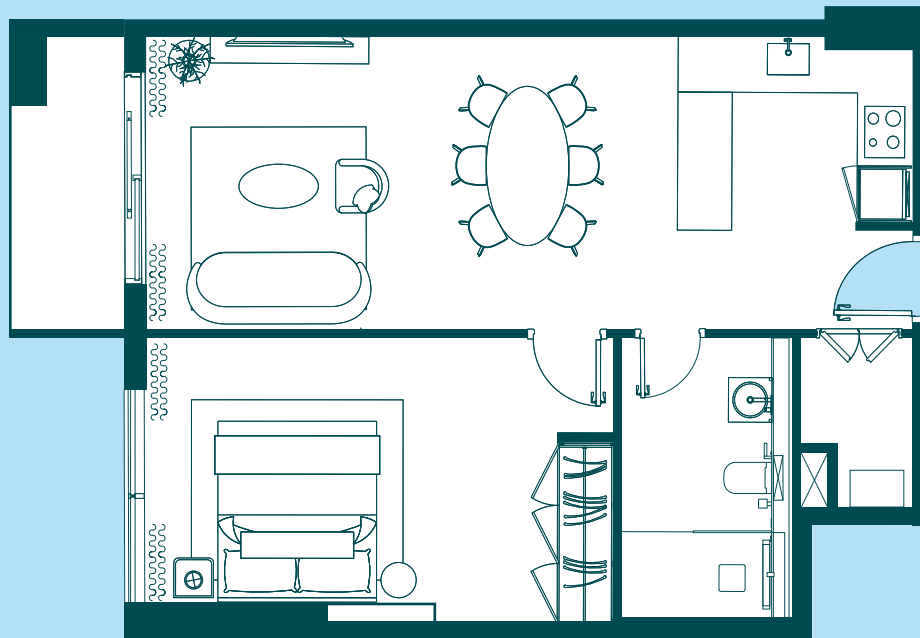




# 1 BED

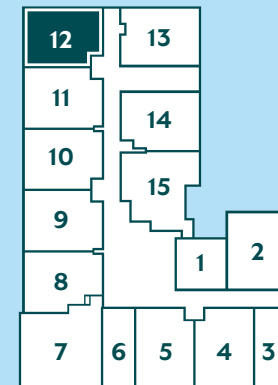
Unit 1012/1112

710 Sq.ft



## DIMENSIONS

- ❶ **INTERNAL AREA:** 635.83 Sq.Ft. (59.07 Sq.M.)
- ❷ **BALCONY AREA:** 74.27 Sq. Ft. (6.9 Sq.M.)
- ❸ **TOTAL AREA:** 710.1 Sq. Ft. (65.97 Sq.M.)



1. All dimensions are in imperial and metric, and measured to structural elements and exclude wall finishes and construction tolerances. 2. All materials, dimensions, and drawings are approximate only. 3. Information is subject to change without notice at developer's absolute discretion. 4. Actual area may vary from the stated area. 5. Drawings not to scale. 6. All images used are for illustrative purposes only and do not represent the actual size, features, specifications, fittings, and furnishings. 7. The developer reserves the right to make revisions / alterations, at its absolute discretion, without any liability whatsoever.

More information at:  
[rise-residences.com](http://rise-residences.com)

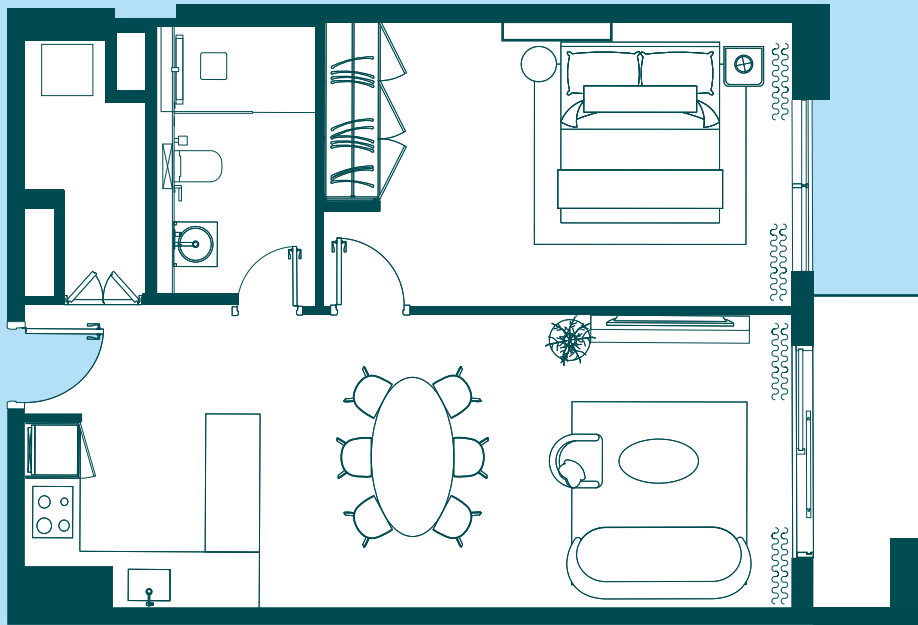




# 1 BED

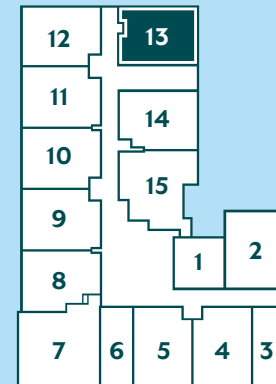
Unit 1013/1113

706 Sq.ft



## DIMENSIONS

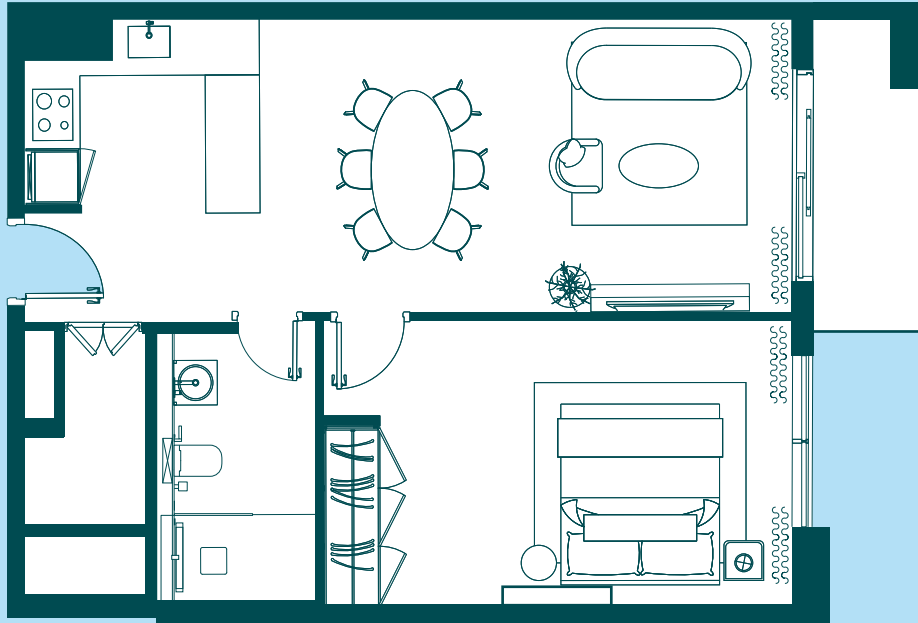
- ❶ **INTERNAL AREA:** 631.95 Sq.Ft. (58.71 Sq.M.)
- ❷ **BALCONY AREA:** 74.27 Sq. Ft. (6.90 Sq.M.)
- ❸ **TOTAL AREA:** 706.22 Sq. Ft. (65.61 Sq.M.)



1. All dimensions are in imperial and metric, and measured to structural elements and exclude wall finishes and construction tolerances. 2. All materials, dimensions, and drawings are approximate only. 3. Information is subject to change without notice at developer's absolute discretion. 4. Actual area may vary from the stated area. 5. Drawings not to scale. 6. All images used are for illustrative purposes only and do not represent the actual size, features, specifications, fittings, and furnishings. 7. The developer reserves the right to make revisions / alterations, at its absolute discretion, without any liability whatsoever.

More information at:  
[rise-residences.com](http://rise-residences.com)





More information at:  
[rise-residences.com](http://rise-residences.com)

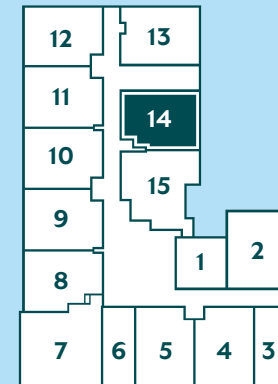
# 1 BED

Unit 1014/1114

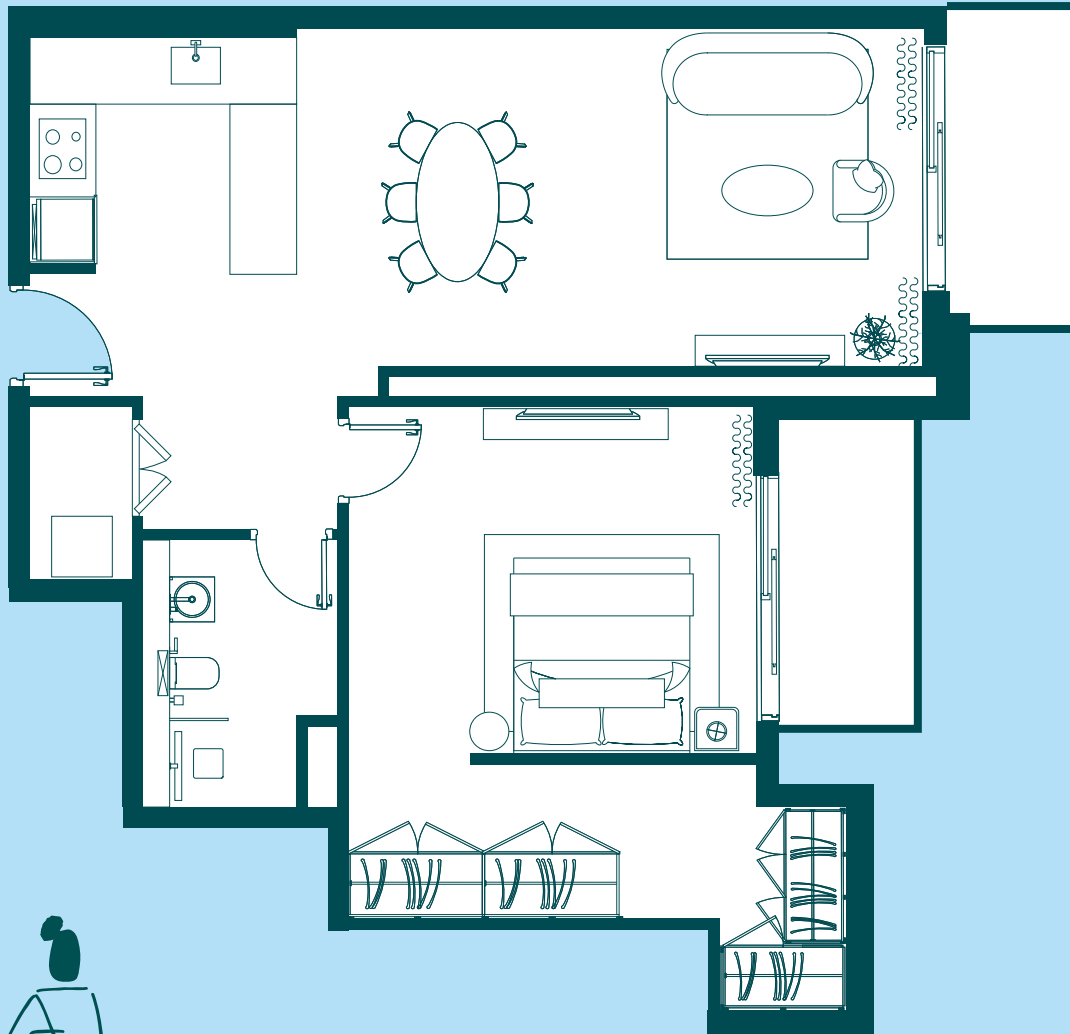
693 Sq.ft

## DIMENSIONS

- ❶ **INTERNAL AREA:** 620.65 Sq.Ft. (57.66 Sq.M.)
- ❷ **BALCONY AREA:** 72.33 Sq. Ft. (6.72 Sq.M.)
- ❸ **TOTAL AREA:** 692.98 Sq. Ft. (64.38 Sq.M.)



1. All dimensions are in imperial and metric, and measured to structural elements and exclude wall finishes and construction tolerances. 2. All materials, dimensions, and drawings are approximate only. 3. Information is subject to change without notice at developer's absolute discretion. 4. Actual area may vary from the stated area. 5. Drawings not to scale. 6. All images used are for illustrative purposes only and do not represent the actual size, features, specifications, fittings, and furnishings. 7. The developer reserves the right to make revisions / alterations, at its absolute discretion, without any liability whatsoever.



More information at:  
[rise-residences.com](http://rise-residences.com)

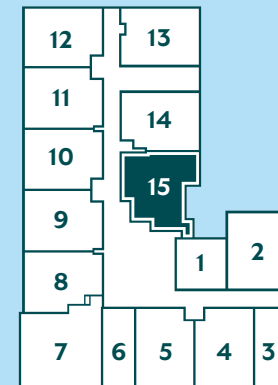
# 1 BED

Unit 1015/1115

834 Sq.ft

## DIMENSIONS

- ❶ INTERNAL AREA: 715.05 Sq.Ft. (66.43 Sq.M.)
- ❷ BALCONY AREA: 119.16 Sq.Ft. (11.07 Sq.M.)
- ❸ TOTAL AREA: 834.20 Sq.Ft. (77.50 Sq.M.)



1. All dimensions are in imperial and metric, and measured to structural elements and exclude wall finishes and construction tolerances. 2. All materials, dimensions, and drawings are approximate only. 3. Information is subject to change without notice at developer's absolute discretion. 4. Actual area may vary from the stated area. 5. Drawings not to scale. 6. All images used are for illustrative purposes only and do not represent the actual size, features, specifications, fittings, and furnishings. 7. The developer reserves the right to make revisions / alterations, at its absolute discretion, without any liability whatsoever.