



MADA'IN TOWER

**BOU
TIQUE
PROPERTY
DEVELOPER**

Building Dreams
Creating Futures



WHAT MAKES US UNIQUE

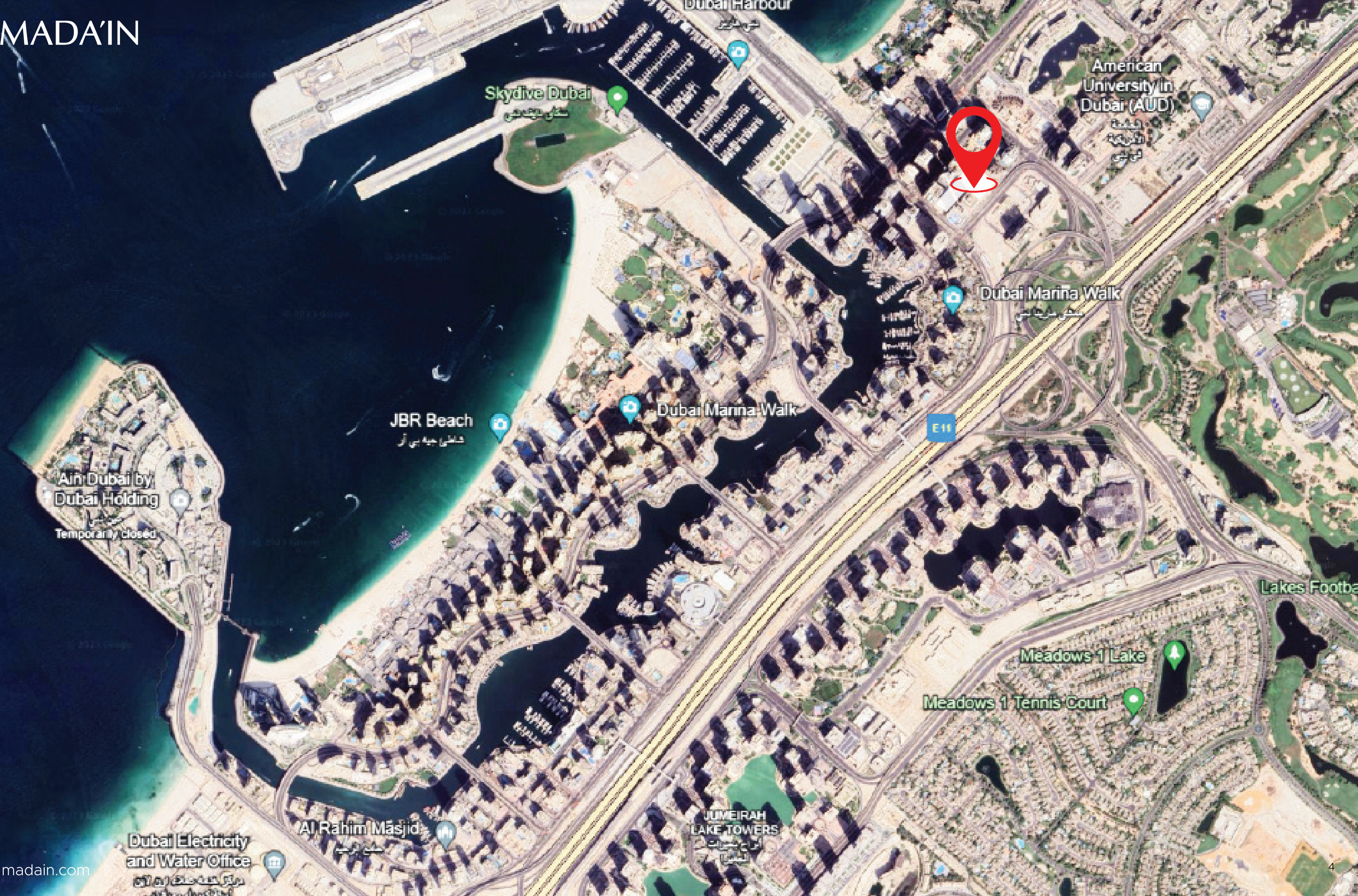
MADA'IN PROPERTIES takes immense pride in what sets us apart – our unrivaled commitment to uniqueness. We understand that real estate is not just about constructing buildings; it's about crafting spaces that are exceptional, distinctive, and memorable.

What makes us truly unique is our relentless pursuit of innovative design, our unyielding dedication to sustainability, and our unwavering commitment to making a positive impact in the communities where we operate.

Every project we undertake is a testament to our creativity, precision, and our ability to seamlessly blend aesthetics with functionality. We are not satisfied with the ordinary; we strive for the extraordinary.

Our team's expertise, combined with our keen understanding of market dynamics, ensures that each development bears the hallmark of excellence. When you choose us, you choose a partner who goes beyond bricks and mortar, creating enduring spaces that stand out in the industry for their elegance and distinctiveness. Unique by design, unique by choice – that's what makes us the epitome of real estate innovation.





MADA'IN TOWER

We are honoured to introduce Madain Tower exclusively located at Dubai Marina.

This luxurious tower has its own characteristics where you feel the nature at your home.

Based between Al Khayay St and Al Sharta main road, this artwork has a view at Dubai Harbour Yacht Club, Dubai Media City, Palm Jumeirah, Sheikh Zayed Road and Emirates Hills Golf course.



Prime Locations	Distance
Dubai Marina Walk	5 minutes
SZR Road	2 minutes
Tram Station	150 meters
Metro Station	2 minutes
Dubai Marina Yacht Moorage	400 meters
Dubai Marina Mall	10 minutes
Palm Jumeirah	8 minutes
Burj Khalifa	17 minutes
DXB Airport	20 minutes
Al Maktoum Airport	25 minutes

SWIMMING POOL &
JACUZZI with Apartments





MADA'IN TOWER

Ready luxury apartments in Dubai Marina

With spectacular views Mada'in Tower is a paradigm of urban architecture and design, located in Dubai's tourist center. Every space is planned to perfection, with spectacular views of the surrounding neighbourhood.

Unit types

Residence available in apartments:

- 1 Bedroom
- 2 Bedroom
- Sky Villa Duplex 3 Bedroom
- Sky Villa Duplex 4 Bedroom
- Sky Mansion 5 Bedroom
- Sky Palace 7 Bedroom

Amenities

- Olympic size Swimming pool
- Gym
- Elegant lobby with reception desk
- Kids Area with Swimming pool
- Sauna
- Steam
- Round-the-clock security
- Ample parking space (VIP & Valet Parking)
- Manicured landscaping

PAYMENT PLAN - 3 YEARS

10% ON BOOKING		
1st Payment	2nd Payment	3rd Payment
10% March 2024	5% July 2024	5% December 2024
4th Payment	5th Payment	6th Payment
5% March 2025	5% July 2025	5% December 2025
7th Payment	8th Payment	9th Payment
5% March 2026	5% July 2026	5% December 2026
40% Handover 2027		

MADA'IN

800 370
MADAIN.COM

The renderings and visualizations contained in this brochure are provided for illustrative and marketing purposes. While the information provided is believed to be accurate and reliable at the time of printing, only the information contained in the final Sales and Purchase Agreement will have any legal effect.