



**INDONESIA  
BALI**

# **PERERENAN APARTMENTS**



# SWOI PERERENAN APARTMENTS

[Click to view complex location](#)

SWOI Development Group proudly presents **SWOI Pererenan Boutique Apartments**, the epitome of modern luxury living.

**SWOI Pererenan Apartments** grace a picturesque **1140 square meters** of serene view land, offering a haven of tranquility and sophistication.

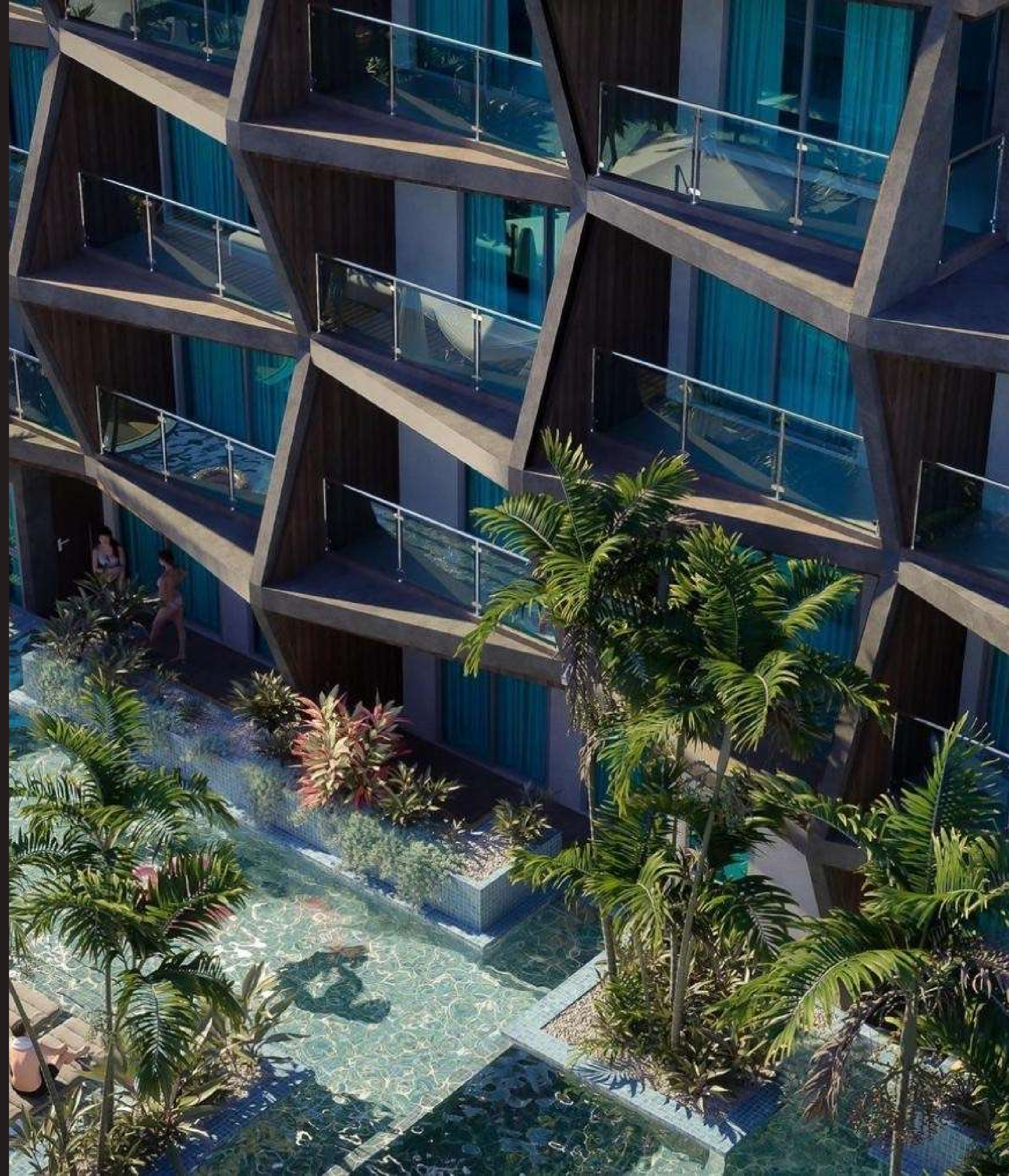
Choose from our selection of **56 meticulously designed apartments**, featuring **1 and 2 bedrooms**, each adorned with charming balconies ranging from **4-6 sqm**.

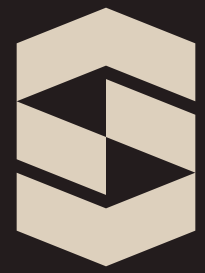
Take your daily retreat to new heights with the complex **Rooftop Oasis**: a stunning 25-meter rooftop swimming pool. Bask in the sun, savor panoramic views, and unwind in style.

Enjoy movie nights under the stars at our **outdoor cinema**, where you can create unforgettable memories.

**Boutique Apartments** offers the convenience of a lift, ample parking for both cars and motorcycles, and a welcoming reception for all your needs.

**Experience the ultimate blend of comfort and luxury. Boutique Apartments at SWOI Pererenan is not just a residence; it's a lifestyle.**





## WHY INVEST IN SWOI PERERENAN APARTMENTS

### FLIP SALE PROFITABILITY

USD 180 000

NETT REVENUE:  
USD 55 000 IN 1 YEAR

47% ROI

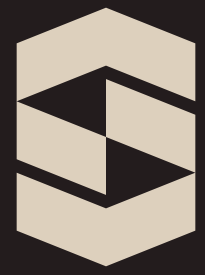
### RENTAL BUSINESS PROFITABILITY

USD 27 300/YEAR

PAYBACK: 7 YEARS

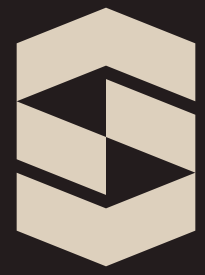
NETT REVENUE:  
USD 16 200/YEAR

14% ROI



# SWOI PERERENAN APARTMENTS EXTERIOR AND VIEWLAND





# SWOI PERERENAN APARTMENTS EXTERIOR AND VIEWLAND



# PERERENAN

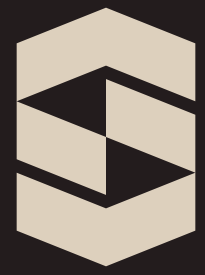


## COMPLEX INFRASTRUCTURE:

- Infinity pool 25 meters
- Lounge area
- Outdoor cinema
- Gym
- Spa area with sauna
- Reception
- 24/7 security and video surveillance
- 3 evacuation stairs
- Elevator
- Parking for cars and motorcycles
- Turnkey solution

- 4 floors
- 56 apartments from 32sq m
- 1 and 2 bedrooms with balconies 4-6 sqm each
- Natural light and air
- Trending furniture and equipment
- International building standards and quality
- Modern living concept

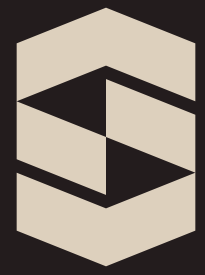
- 1140 square meters total area of the complex
- 30 years leasehold land with priority of extension
- 1,5km from Pererenan Beach and best surf spots
- Most luxurious area in Bali
- Unblocked rice field views
- Central Pererenan
- 5 min to Canggu
- Walking distance to gyms, bars, cafe, restaurants



# SWOI PERERENAN APARTMENTS INTERIOR

Exceptional style and functionality designed to fulfil your needs, desires and unique taste



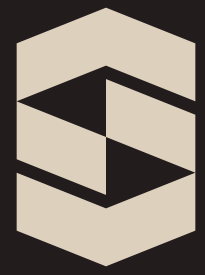


# SWOI PERERENAN APARTMENTS INTERIOR



Your comfort and cutting edge standards is what motivates us to provide you the most unforgettable experience through out your future investment in a household

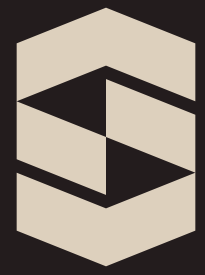




# SWOI PERERENAN APARTMENTS INTERIOR

We provide not only a personal living space,  
but an experince for you to feel and enjoy

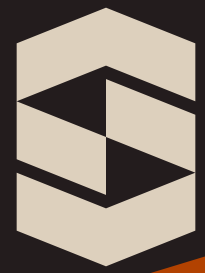




# SWOI PERERENAN APARTMENTS INTERIOR



We redefine the meaning of home. Choosing us as your housing partner comes with a myriad of benefits that transform the way you live.



# SWOI PERERENAN APARTMENTS PRICES

**ONLY 3**

**35 sq.m**

**USD**

**120 000**

**ONLY 6**

**31-33 sq.m**

**USD**

**110 000**

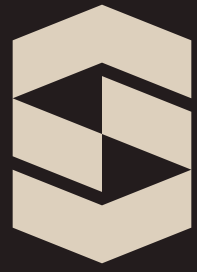
**ONLY 1**

**38 sq.m**

**USD**

**130 000**

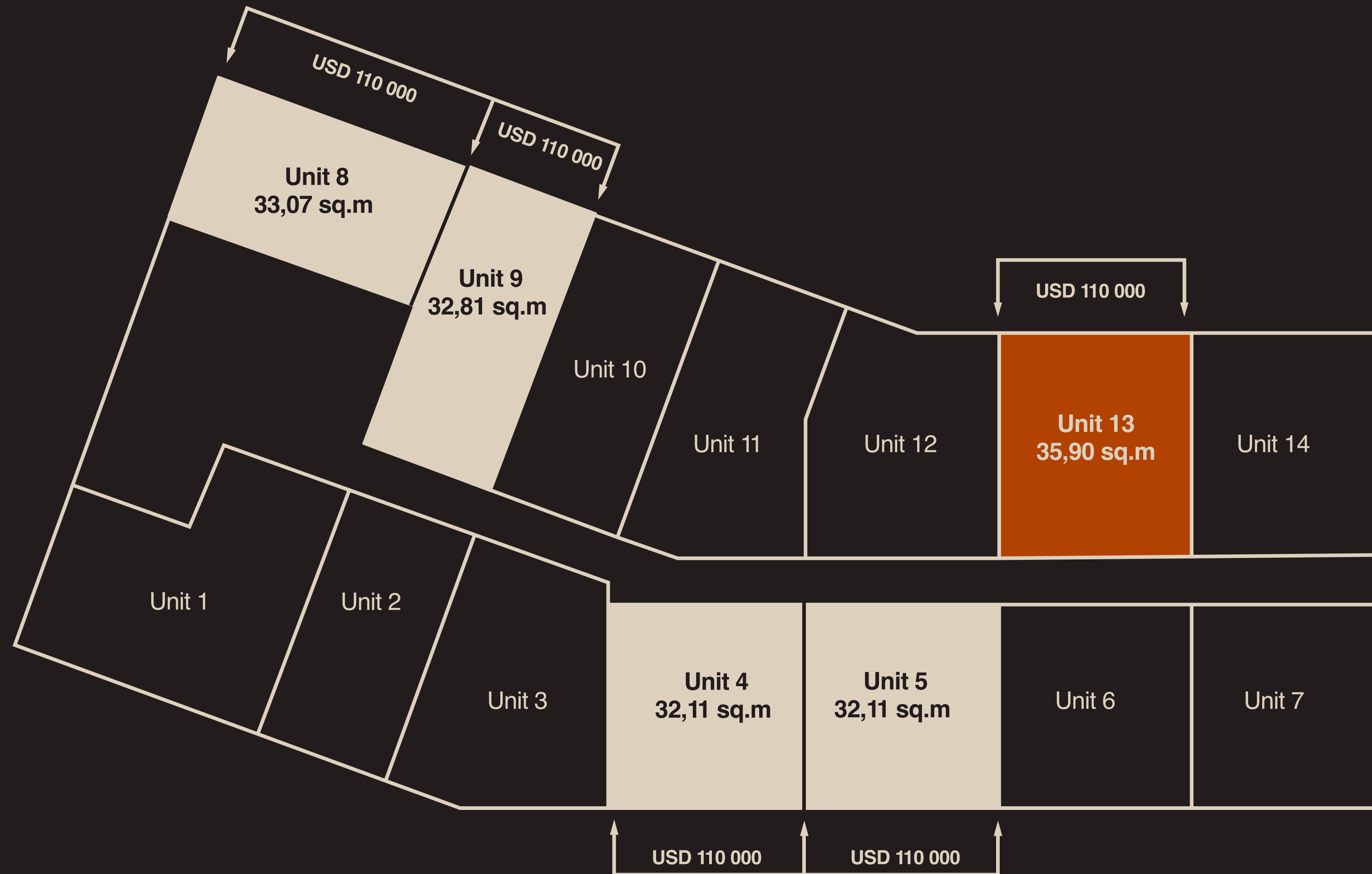
**LIMITED OFFER - BOOK NOW!**

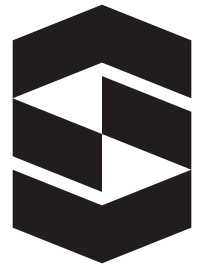


# SWOI PERERENAN APARTMENTS FLOOR 1 LAYOUT PLAN

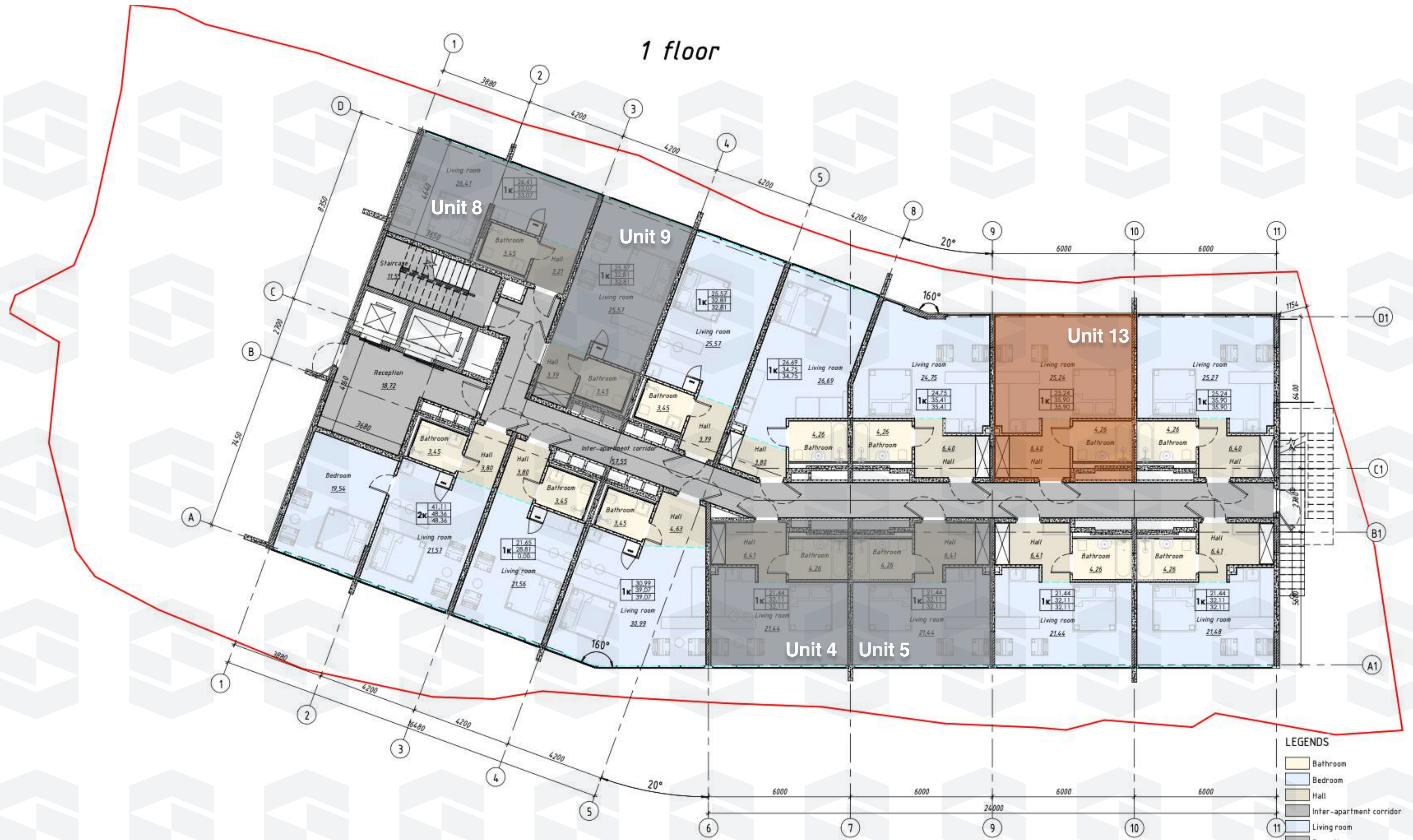
LIMITED OFFER PRE-SALE UNITS

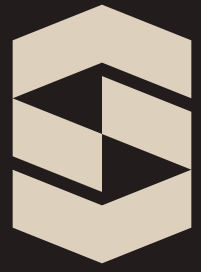
ONE-BEDROOM APARTMENTS  
NO BALCONY





# SWOI PERERENAN APARTMENTS FLOOR 1 FLOOR PLAN

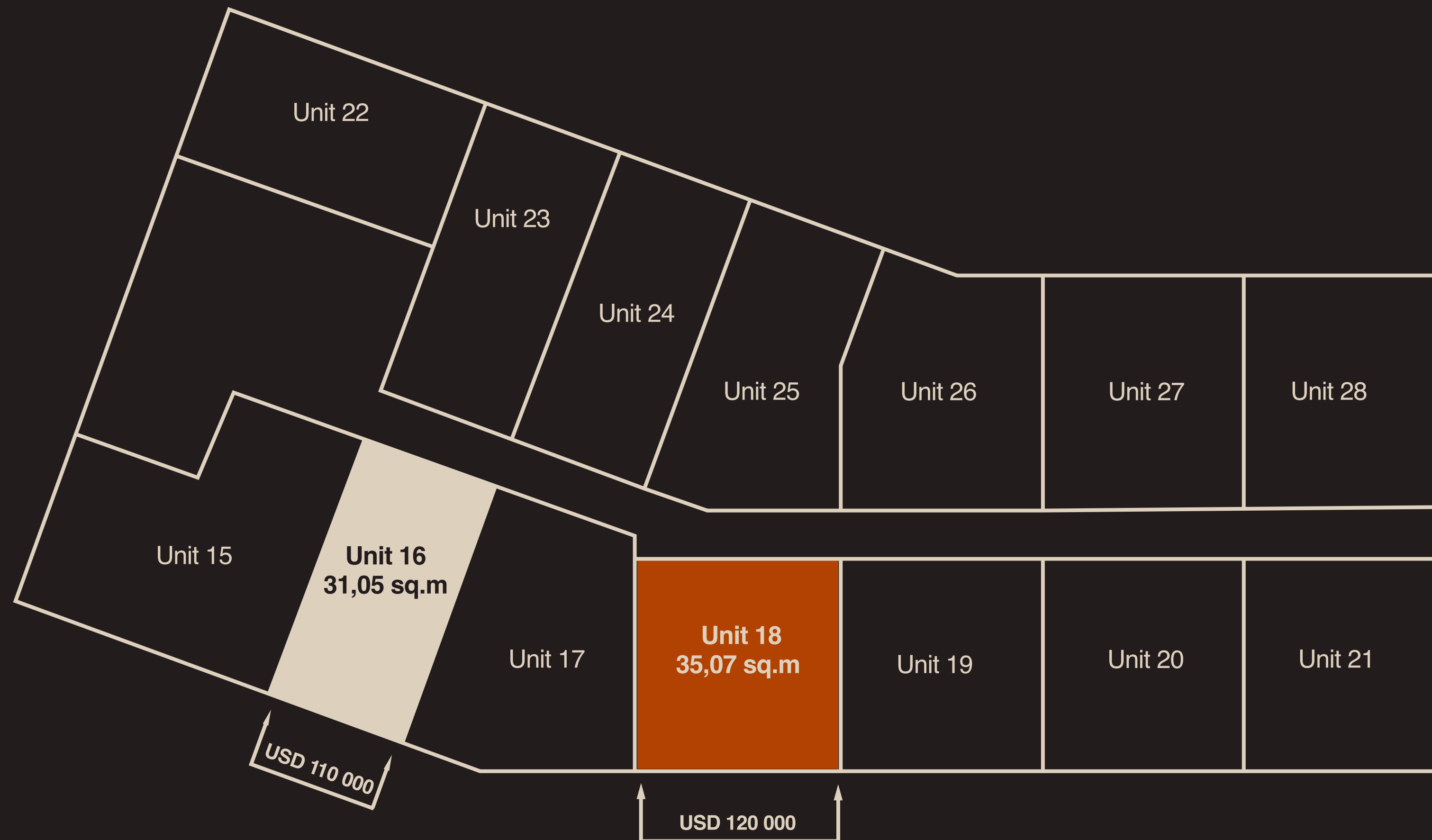


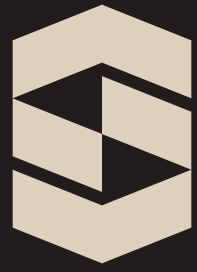


# SWOI PERERENAN APARTMENTS FLOOR 2 LAYOUT PLAN

LIMITED OFFER PRE-SALE UNITS

ONE-BEDROOM APARTMENTS WITH BALCONY



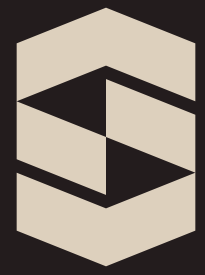


# SWOI PERERENAN APARTMENTS FLOOR 3 LAYOUT PLAN

LIMITED OFFER PRE-SALE UNITS

ONE-BEDROOM APARTMENTS WITH BALCONY





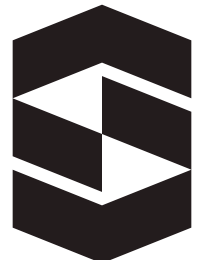
# SWOI PERERENAN APARTMENTS FLOOR 4 LAYOUT PLAN

LIMITED OFFER PRE-SALE UNITS

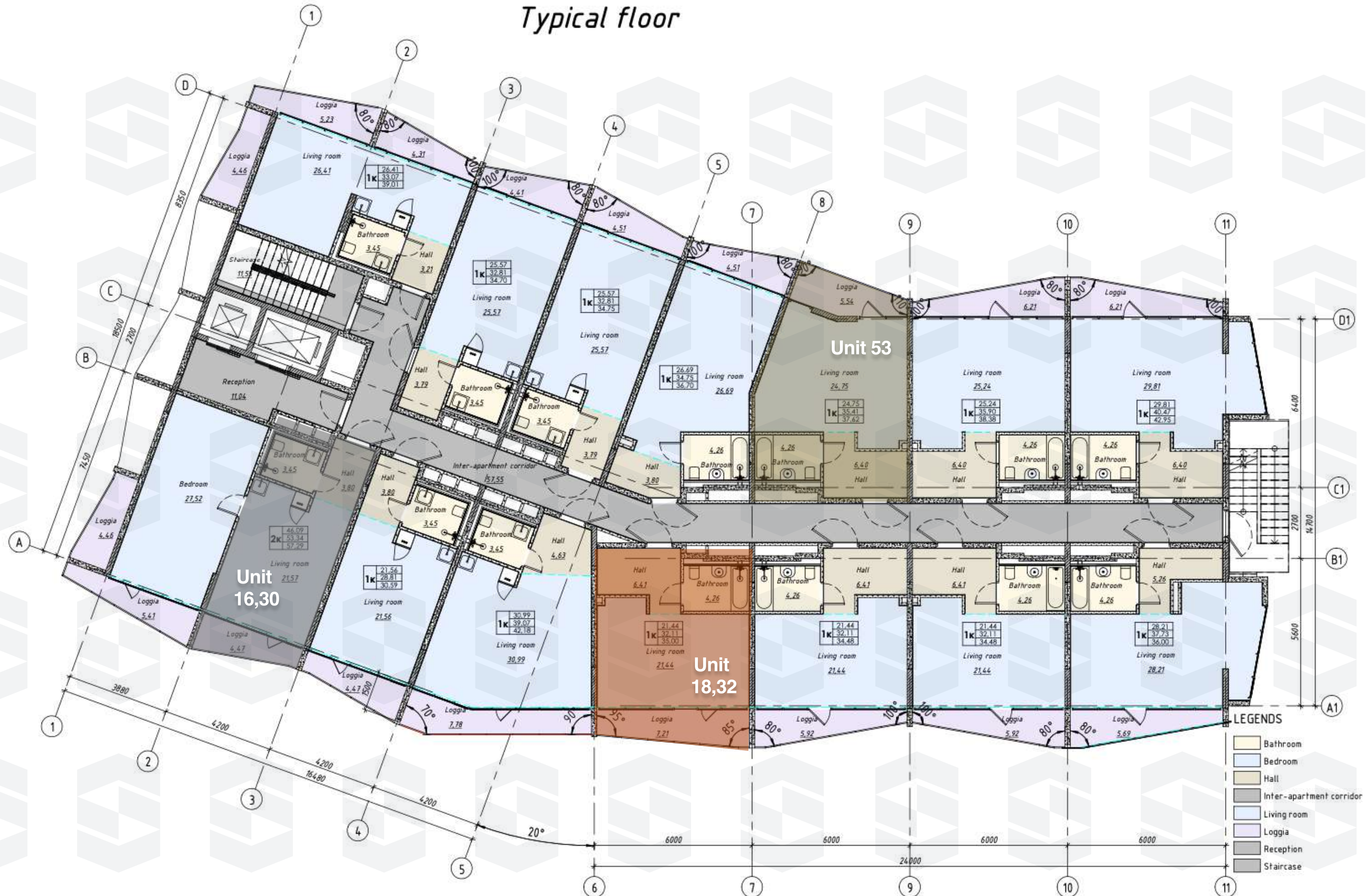
ONE-BEDROOM APARTMENTS WITH BALCONY

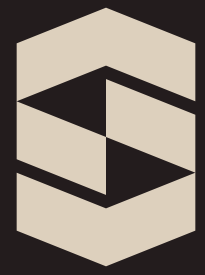






# SWOI PERERENAN APARTMENTS FLOOR 2-4 TYPICAL FLOOR PLAN





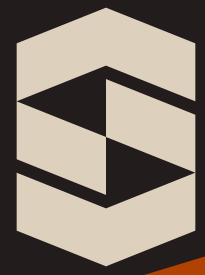
# SWOI PERERENAN APARTMENTS INVESTMENT ROADMAP

## Step 1



## Step 2





# LIQUIDITY FACTORS



- RAPIDLY GROWING COUNTRY' ECONOMY
- LOWEST RECESSION RATE (2%)TOP 5 WORLD
- TOURISM DESTINATION 7th LARGEST GDP IN THE WORLD
- 5% ANNUAL ECONOMY GROWTH RATE



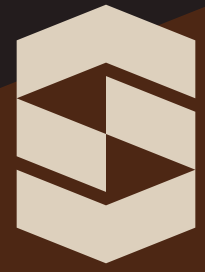
- GROWING LAND PRICE LOCATION
- UP TO 80% OCCUPANCY RATE
- LESS TRAFFIC
- DEMAND FOR DAILY AND LONG-TERM RENT



- TRENDIEST NEW BALI LOCATION
- 5 MINS DRIVE FROM THE BEACH AREA
- INFRASTRUCTURE WITH MODERN GYMS, RESTAURANTS, BARS, SCHOOLS, SPA CENTERS
- ACCESS TO BEST SURF SPOTS



- AUTHENTIC BALINESE NATURE VIEWS
- UNIQUE BLACK SAND BEACHES
- ONLY 5MIN AWAY FROM BATU BOLONG
- NO-TRAFFIC JAM ACCESS TO NORTH BALI AREAS



## WHY INVEST WITH SWOI DEVELOPMENT

# WHO WE ARE:

**LEADING DEVELOPER IN BALI**

**MORE THEN 10 PROJECTS COMPLETED**

**MORE THEN 10 YEARS OF EXPERIENCE**

**WE STAND BEHIND DEVELOPMENT OF TRENDIEST SETTER  
COWORKING IN BERAWA**

**BIGGEST COMPLEX OF TOWNHOUSES ON BALI**

**MORE THEN 9000 SQ.M IN DEVELOPMENT**

### TRENDING

- Only top high demand locations in development
- Innovative Eco-friendly Designs
- Increased focus on sustainability

### OUR TEAM

- International awarded architects and designers
- Technical and engineering supervision of all sites
- We work with only reputable contractors



## OUR QUALITY

- Highest quality building standards in Bali
- 24/7 quality control of all construction steps
- We use only certified building supply from factories
- We use modern construction tools and machinery
- International standards of waterproofing at every stage of construction
- We implement solutions according to specific Balinese weather conditions

### OUR COMMUNITY MISSION

- Eco initiatives
- Sport for community
- Free public workout stations across Bali (coming soon)