

EQUITI

HOME

AL FURJAN

FLOORS:

G + 2P + 10 + R

DEVELOPER:

BNH REAL ESTATE DEVELOPER

COMPLETION DATE:

Q2 2025



Location



DIFC

DUBAI INTERNATIONAL AIRPORT (DXB)

DOWNTOWN DUBAI MALL

BURJ AL ARAB

MEYDAN

PALM JUMEIRAH

MALL OF EMIRATES

AL KHAIL ROAD

DUBAI MARINA

EQUITI
HOME
AL FURJAN

SHEIKH MOHAMMED BIN ZAYED ROAD

SHEIKH ZAYED ROAD

THE PALM JEBEL ALI

JEBEL ALI PORT

JEBEL ALI SHOOTING CLUB

EXPO CITY DUBAI



EQUITI
HOME

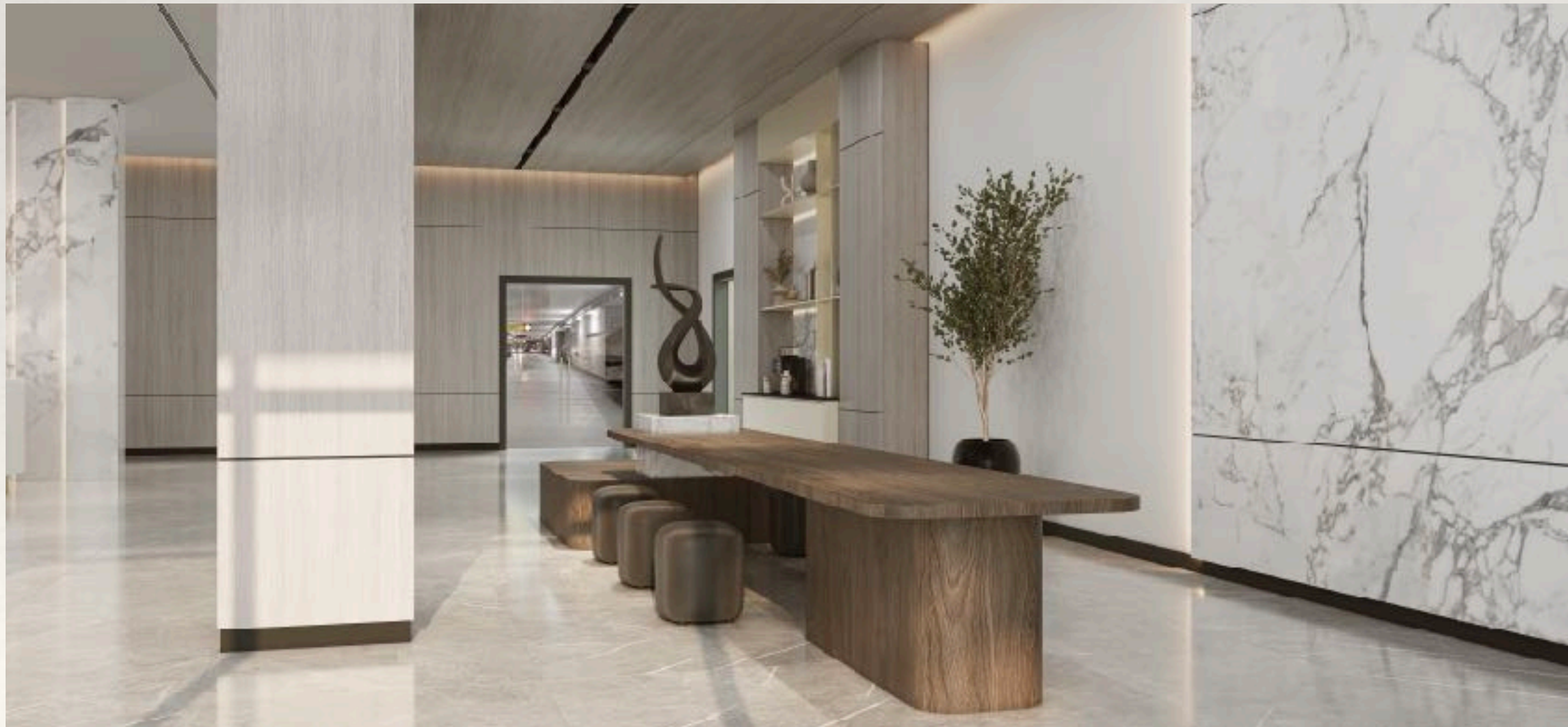
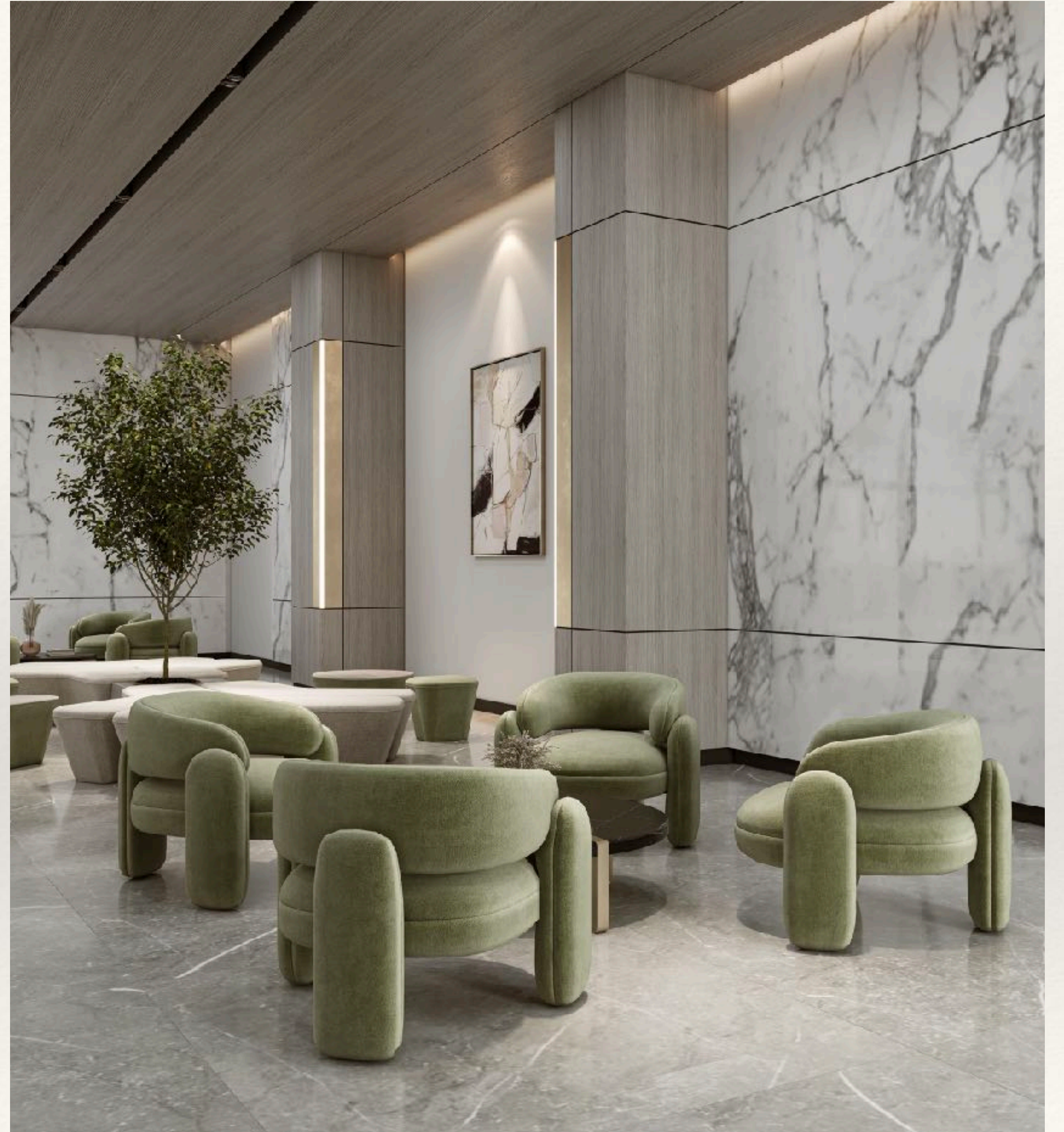
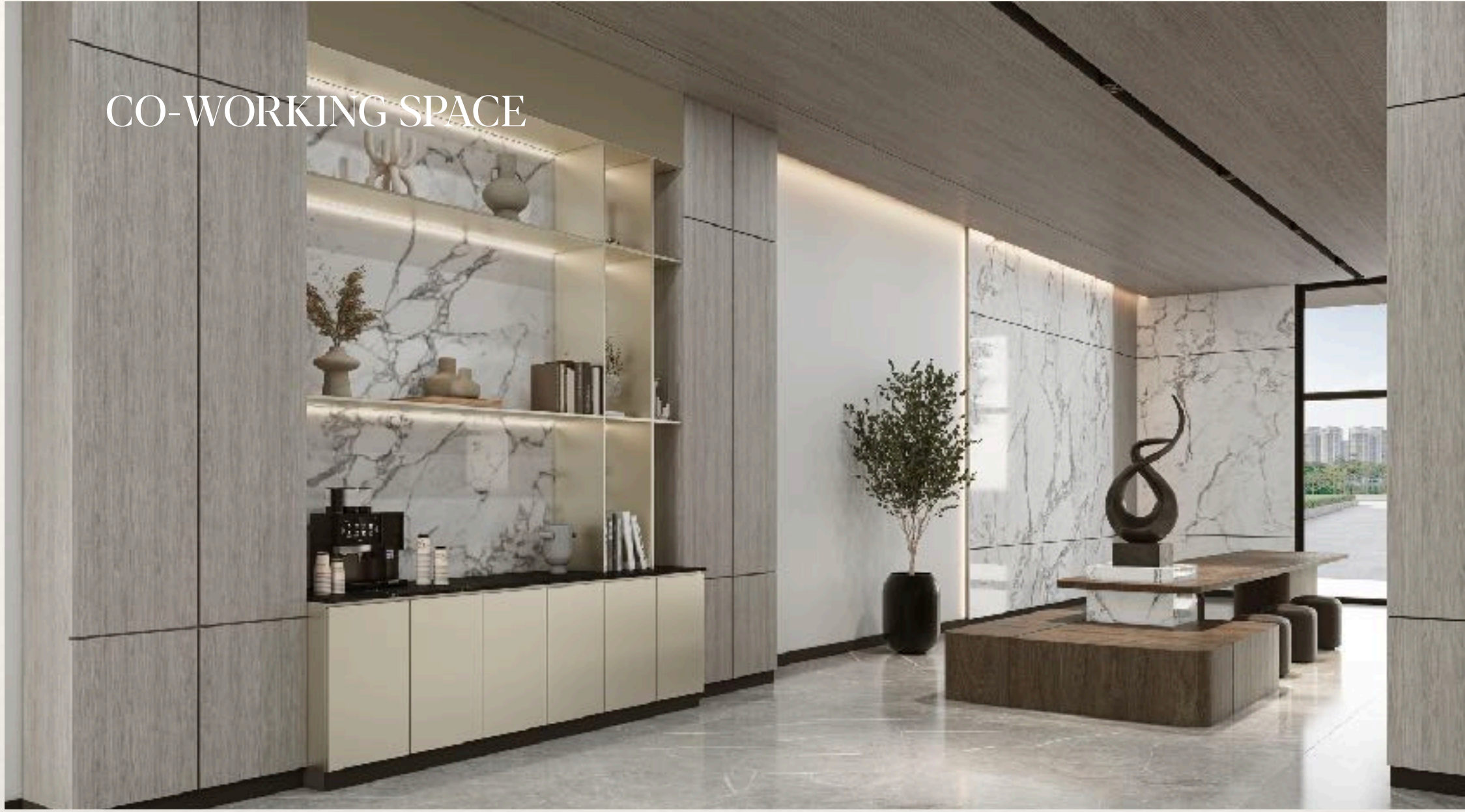


EQUITY
ARCADE
AL FURJAN





CO-WORKING SPACE

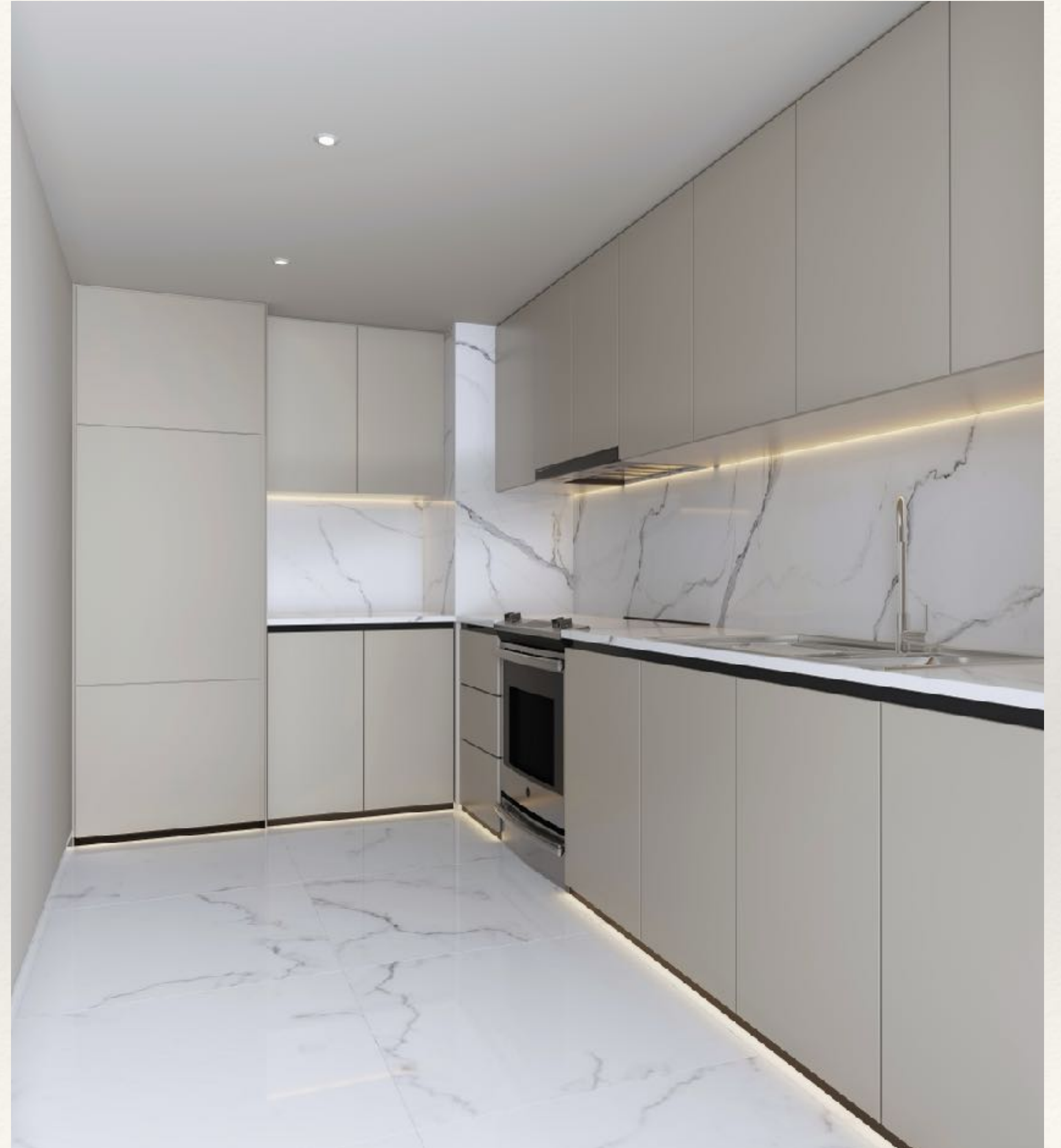


ACTIVE LIFESTYLE











Unit Types

1 Bedroom Average Size
668 - 735 SQFT

2 Bedroom + Maids Average Size
1,082 - 1,171 SQFT

3 Bedroom Average Size
1,799 - 1,850 SQFT

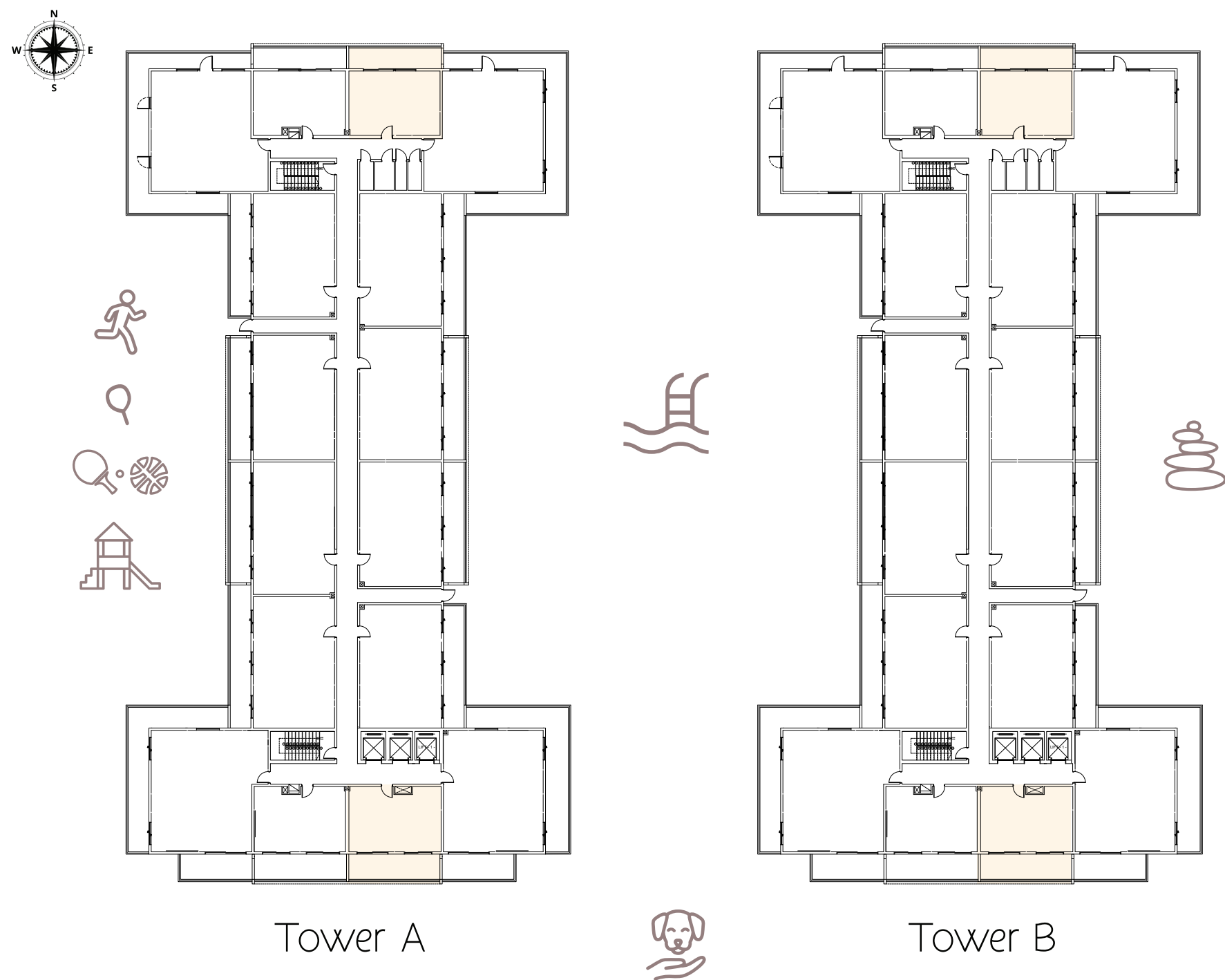
4 Bedroom Penthouse Average Size
2,752 - 3,102 SQFT



FLOOR PLAN

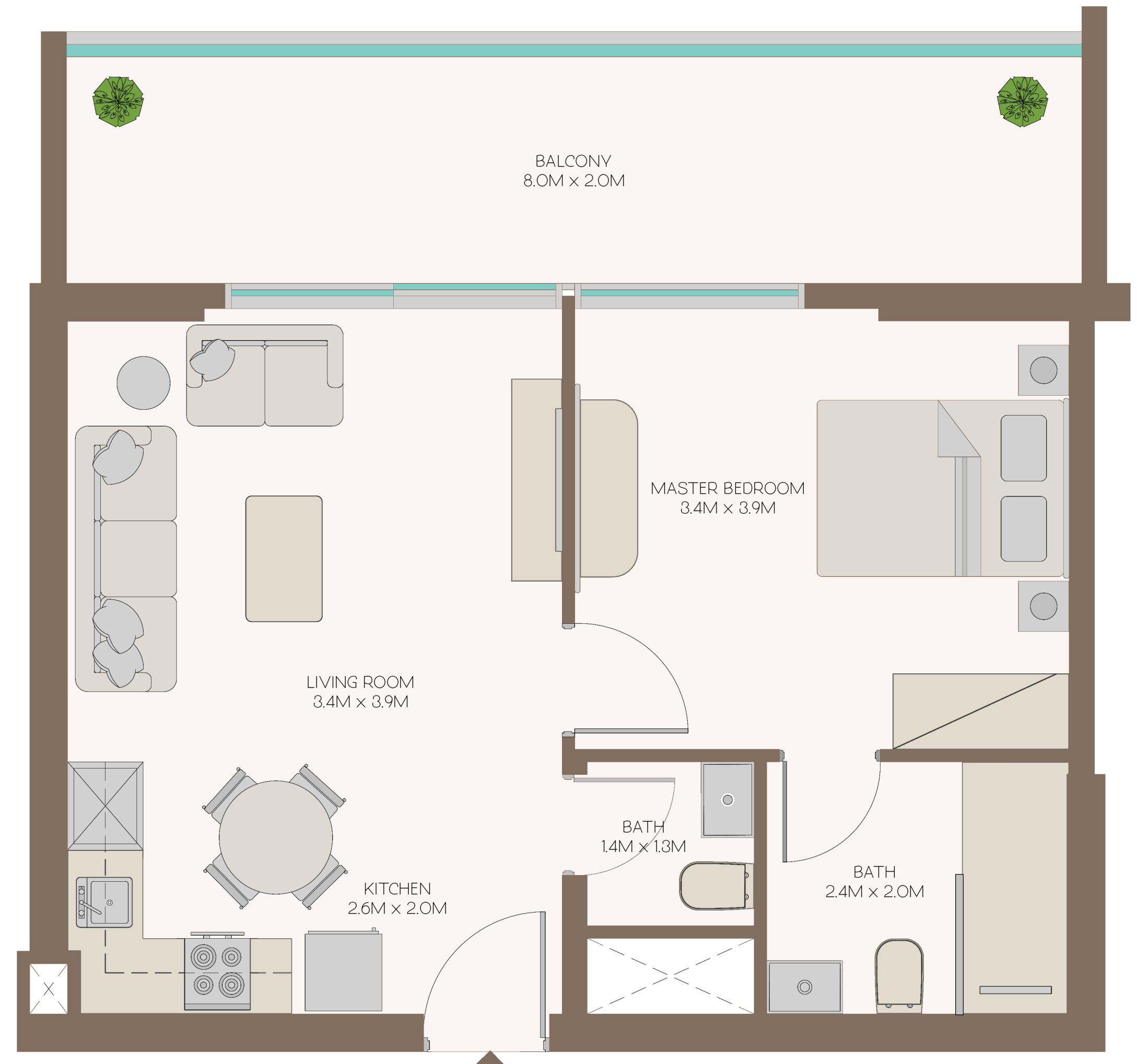
1 Bedroom Apartment

Floor	1st - 8th
TYPE A1	Unit No. A O2, 11 - B O2, 11
Suite Area	497 sq.ft
Balcony Area	211 sq.ft
Total Area	708 sq.ft



Tower A

Tower B

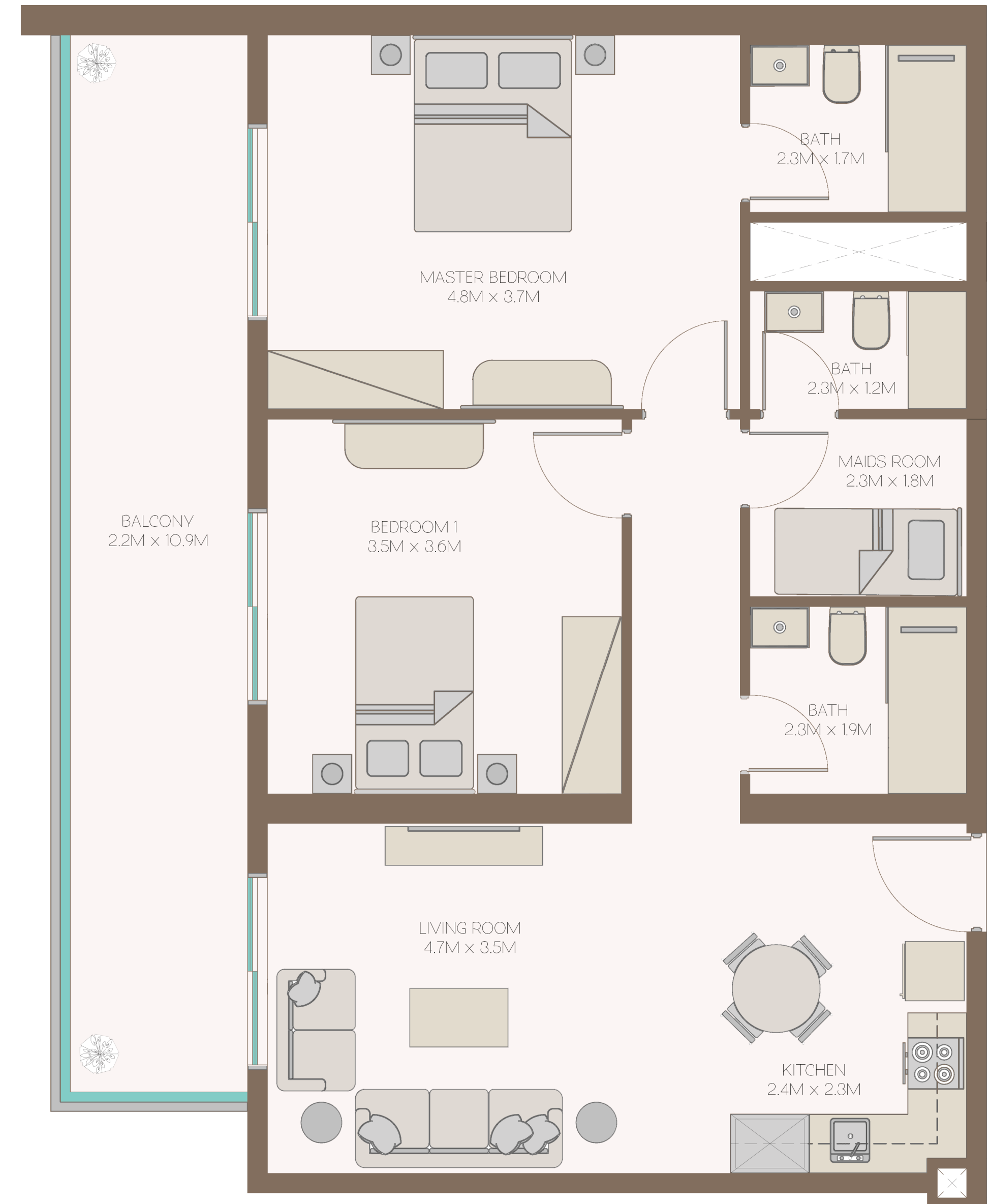
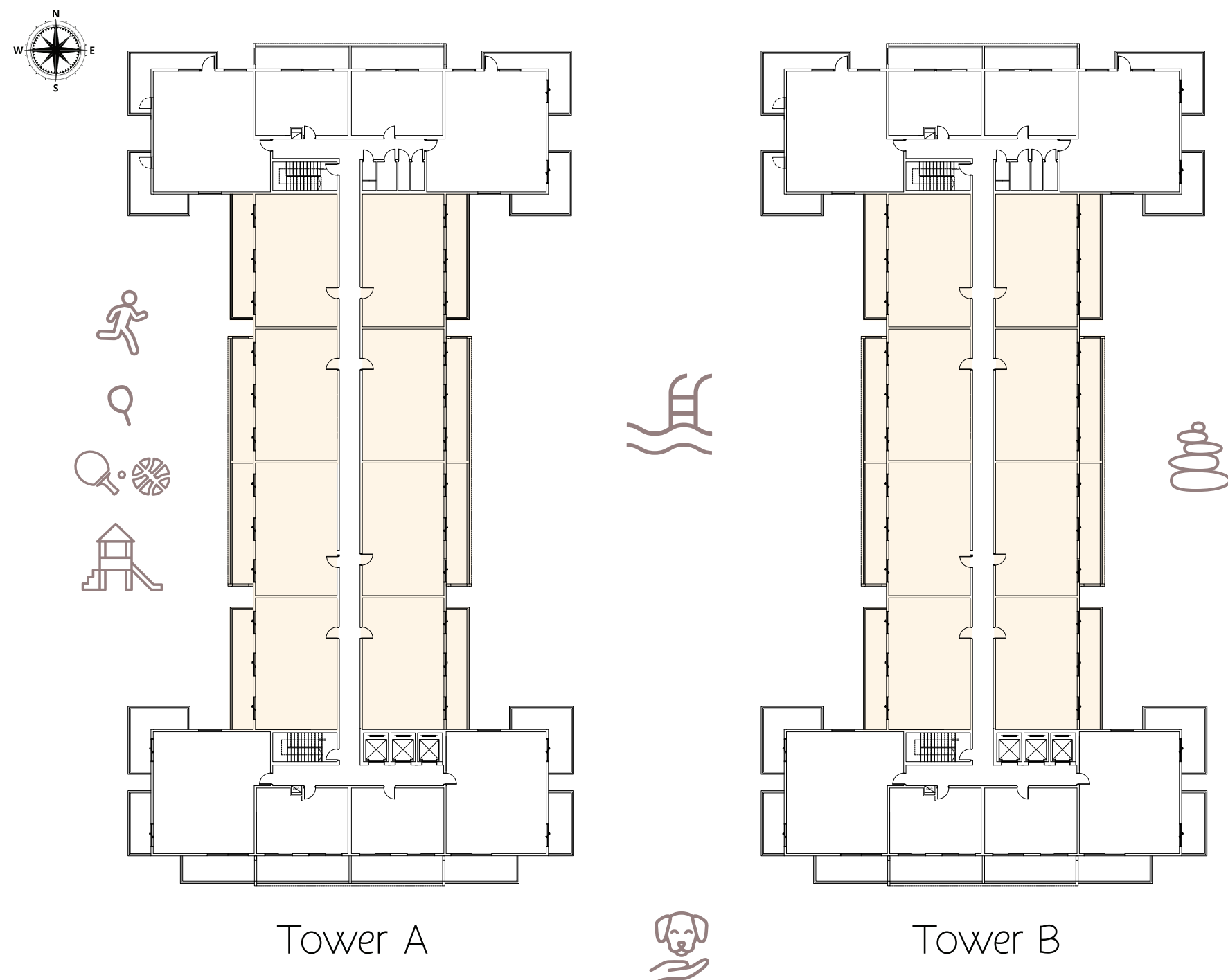


All drawings and dimensions are approximate. Drawings are not to scale and are subject to change without notice. The developer reserves the right to make revisions. The units are measured at typical floor in the building and columns may vary in size depending on the floor level. The furnishings and accessories shown are for representation only. The length and width of the Unit and balcony varies depending on which floor and which orientation the unit is located within the building to comply with the building authority regulations. Apartment unit sizes may vary. Actual unit sizes will be reflected on the Sales and Purchase Agreement.

FLOOR PLAN

2 Bedroom + Maids Apartment

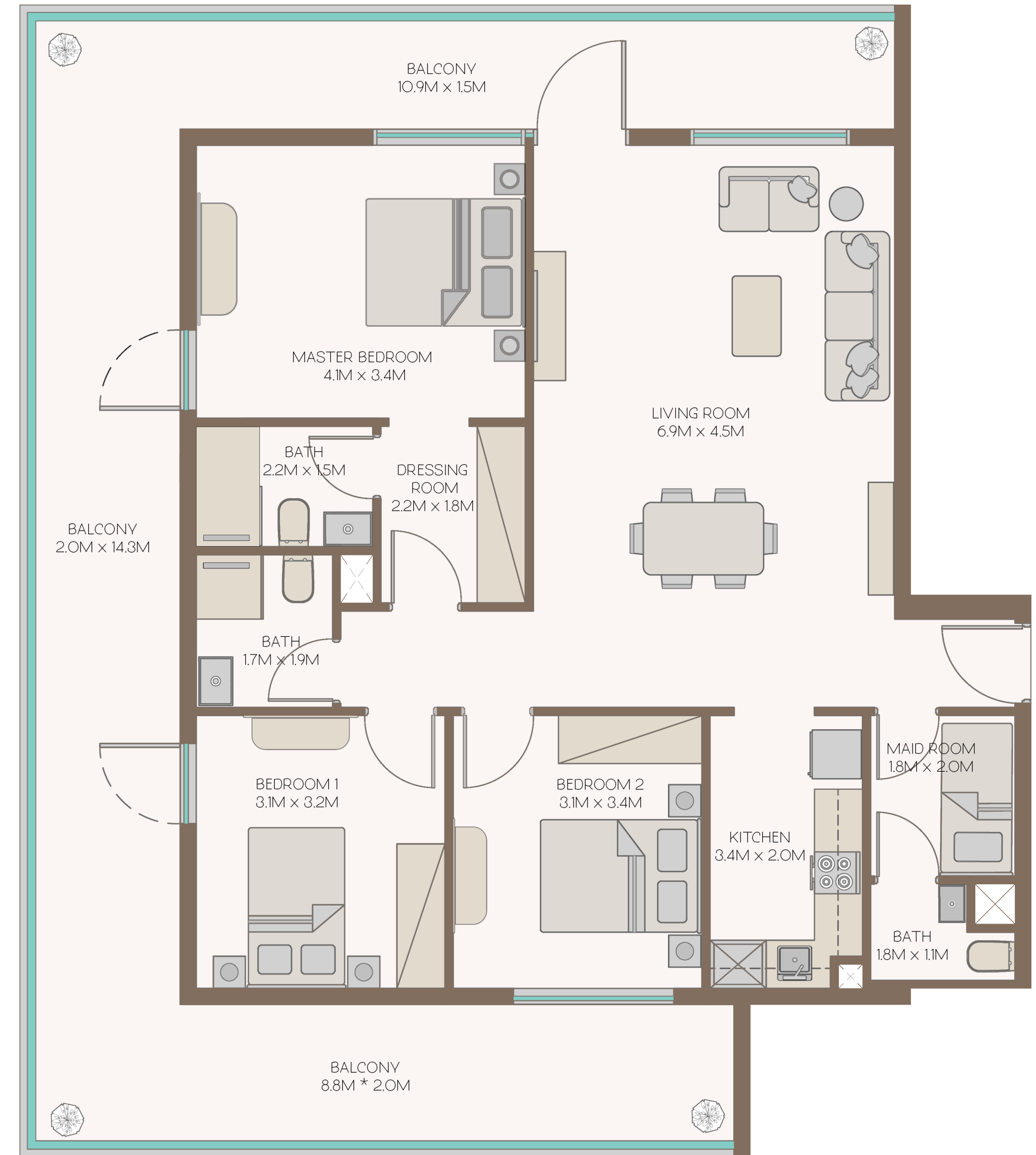
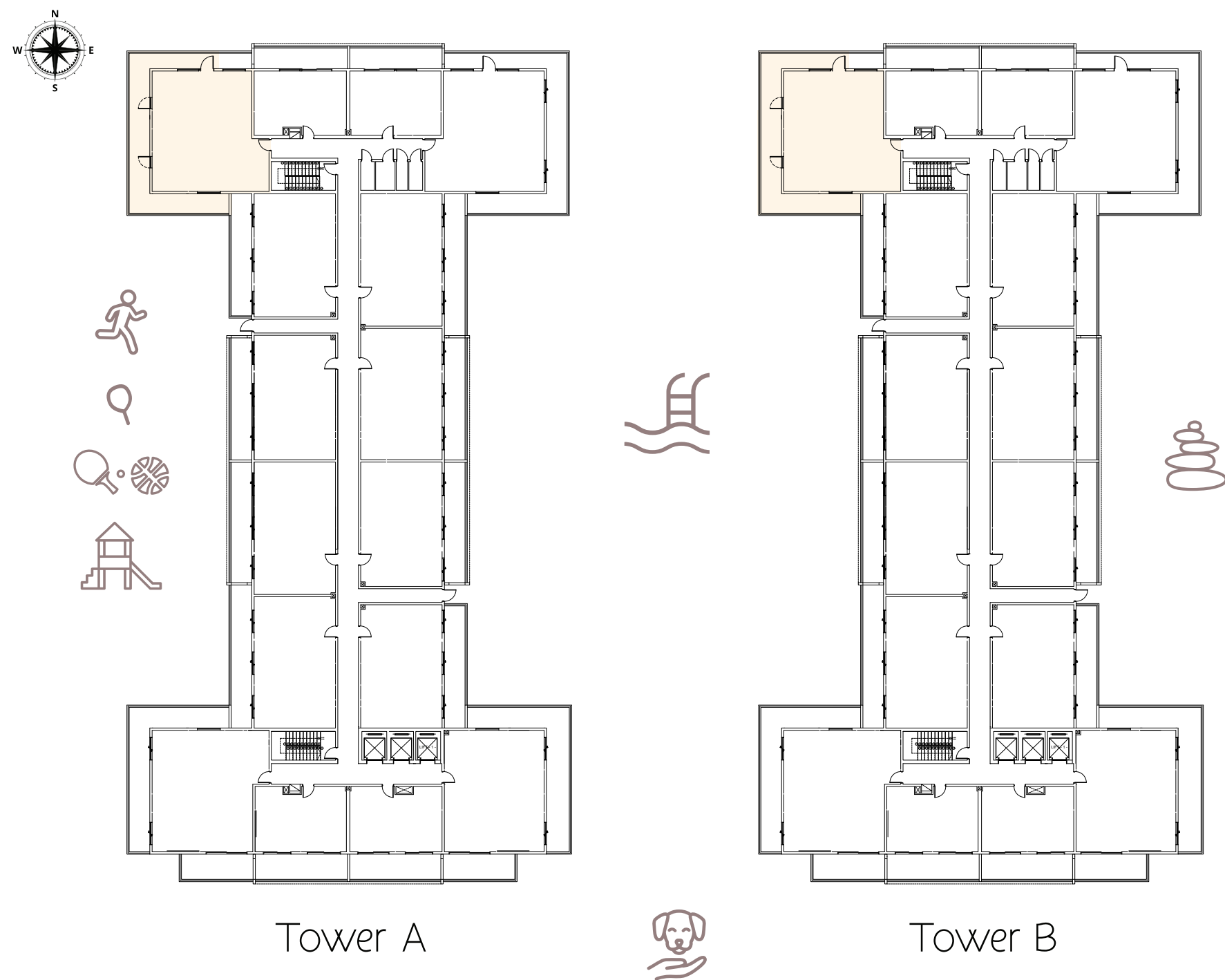
Floor	2nd - 8th
TYPE TYPICAL	Unit No. A 05, 06, 07, 08, 13, 14, 15, 16 - B 05, 06, 07, 08, 13, 14, 15, 16
Suite Area	905 sq.ft
Balcony Area	238 sq.ft
Total Area	1,143 sq.ft



FLOOR PLAN

3 Bedroom + Maids Apartment

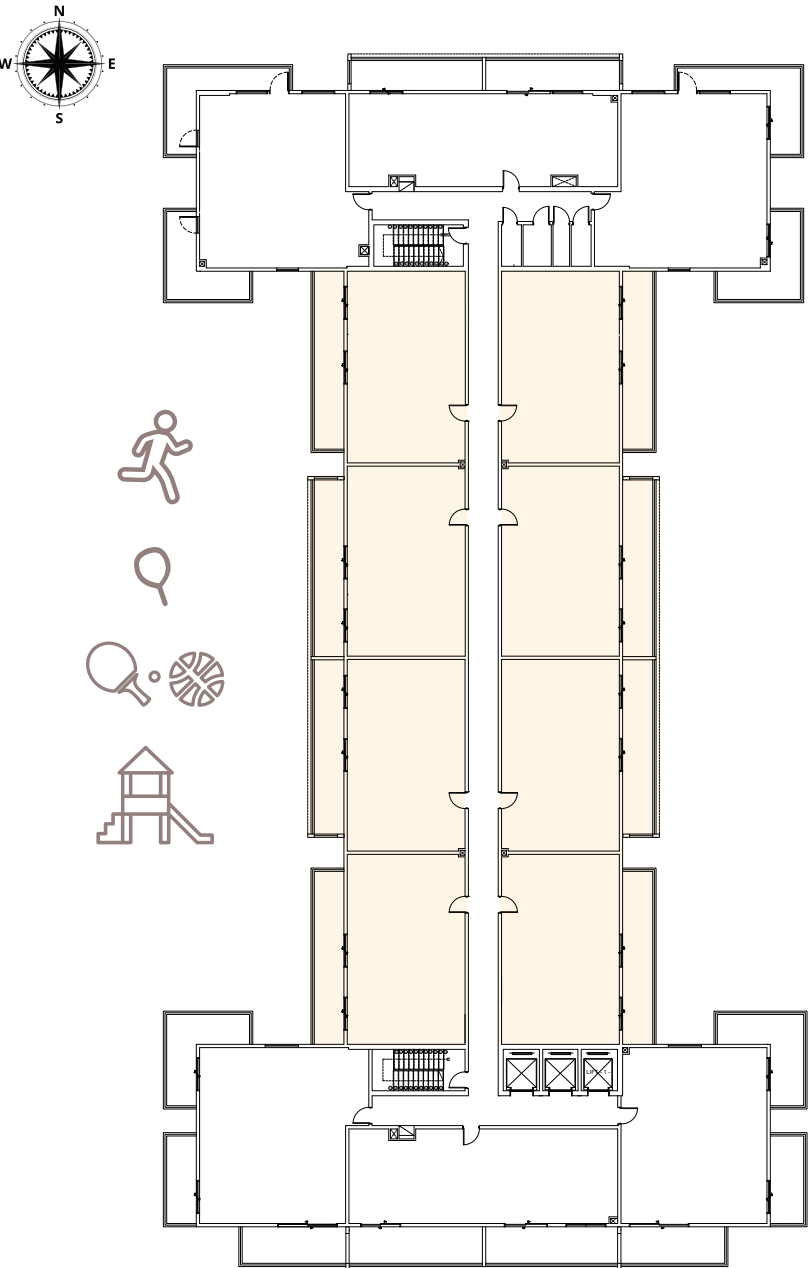
Floor	1st
TYPE A2	Unit No. A 04 - B 04
Suite Area	1,092 sq.ft
Balcony Area	611 sq.ft
Total Area	1,703 sq.ft



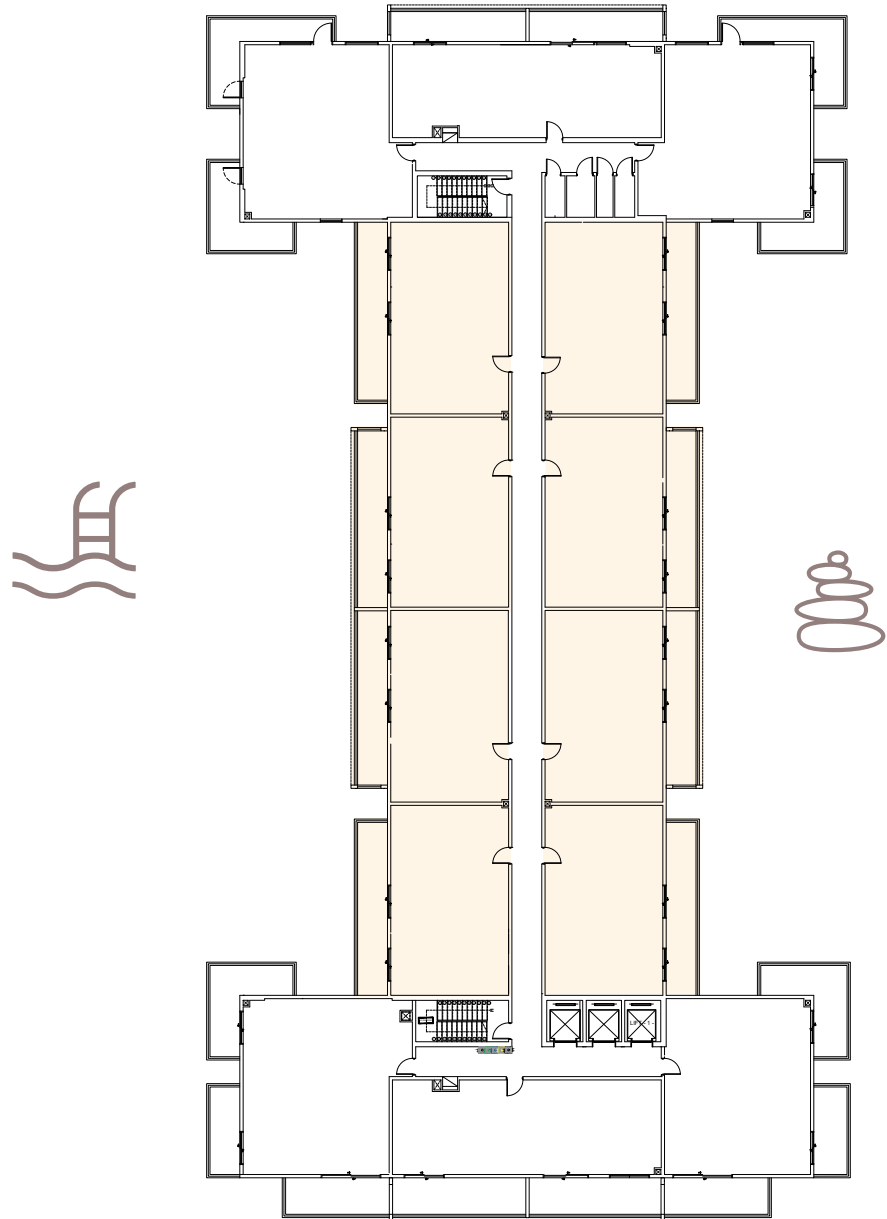
FLOOR PLAN

3 Bedroom + Maid Duplex Apartment

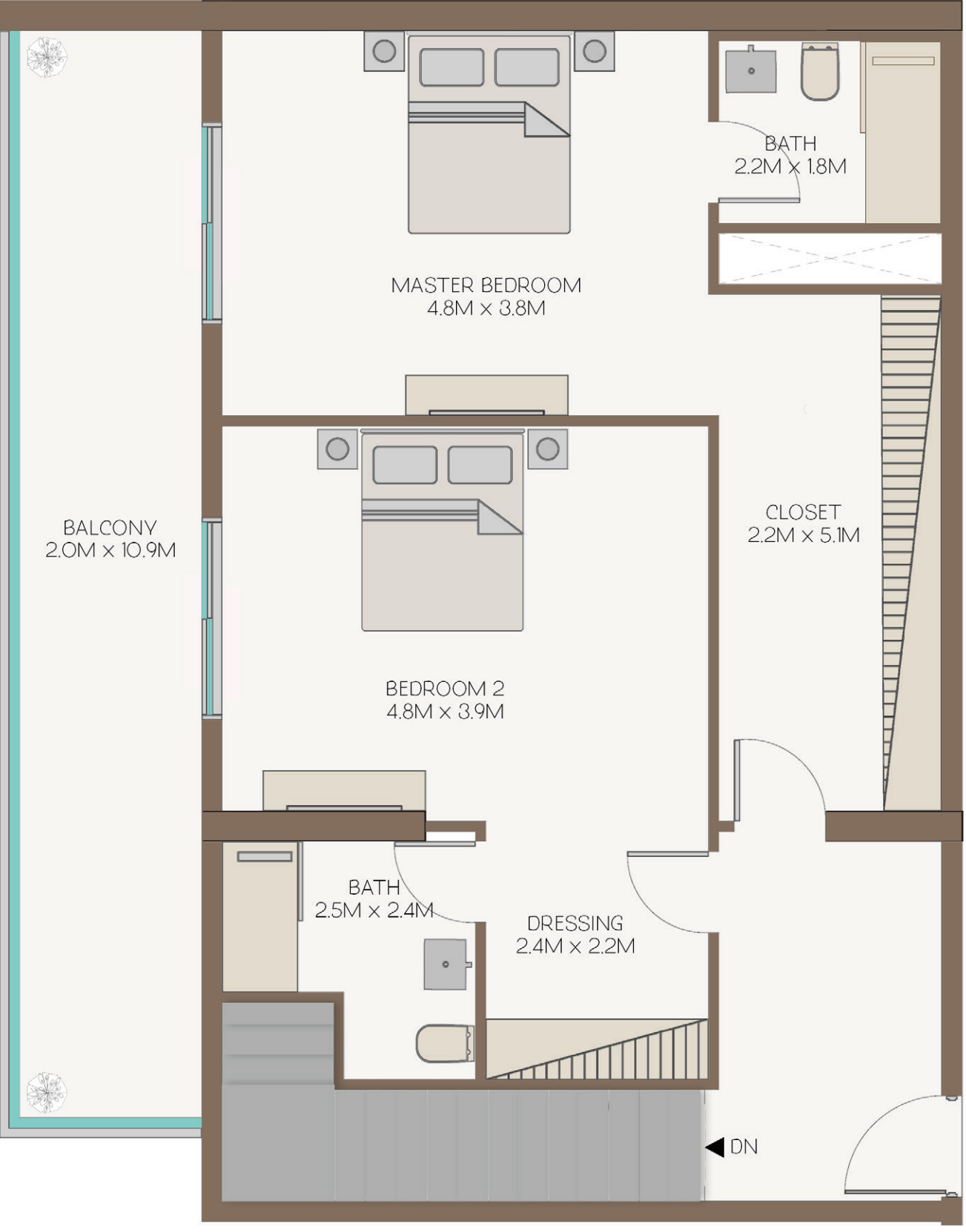
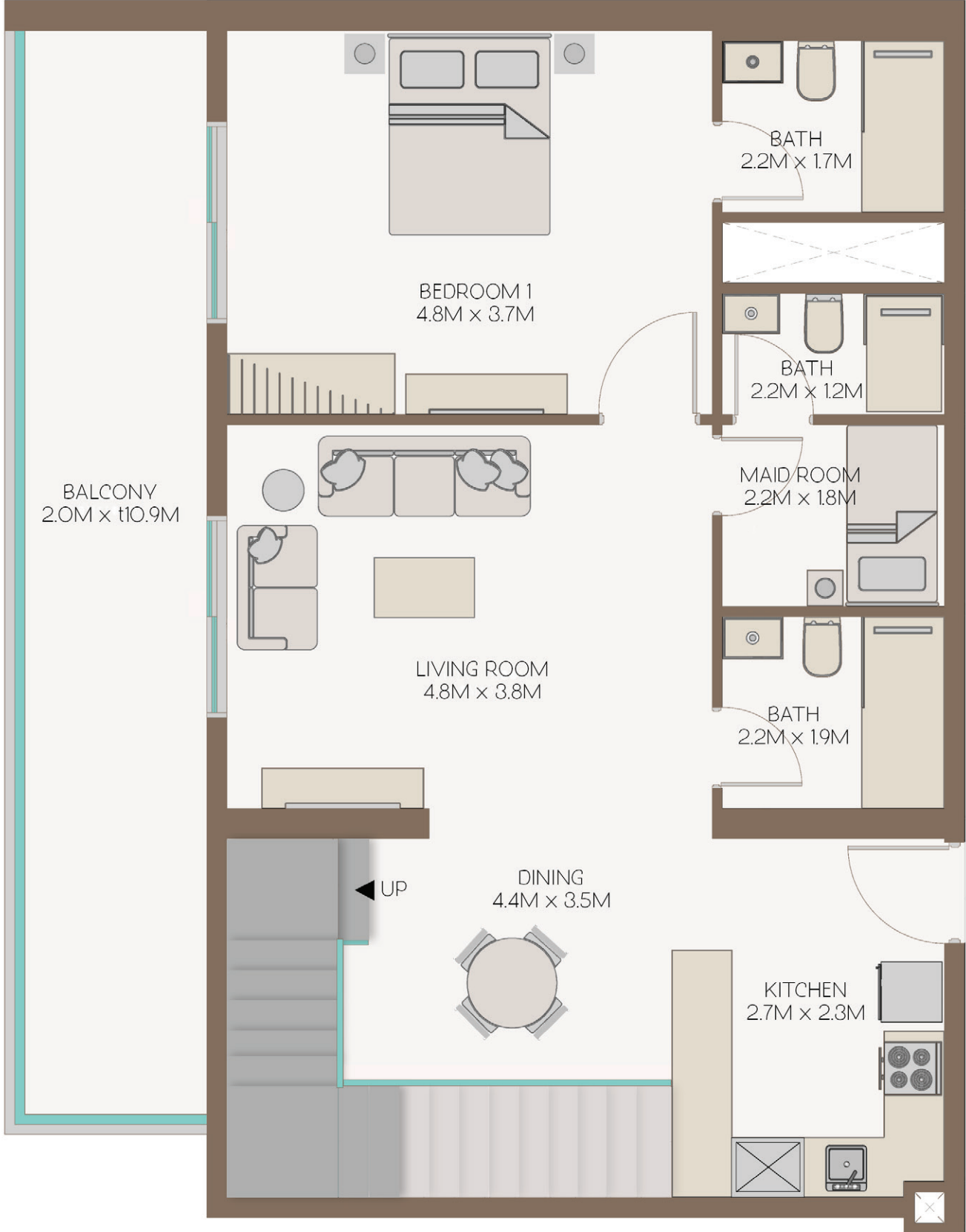
Floor	9th - 10th
TYPE TYPICAL	Unit No. A 04, 05, 06, 07, 11, 12, 13, 14 - B 04, 05, 06, 07, 11, 12, 13, 14
Suite Area	1,814 sq.ft
Balcony Area	474 sq.ft
Total Area	2,288 sq.ft



Tower A



Tower B

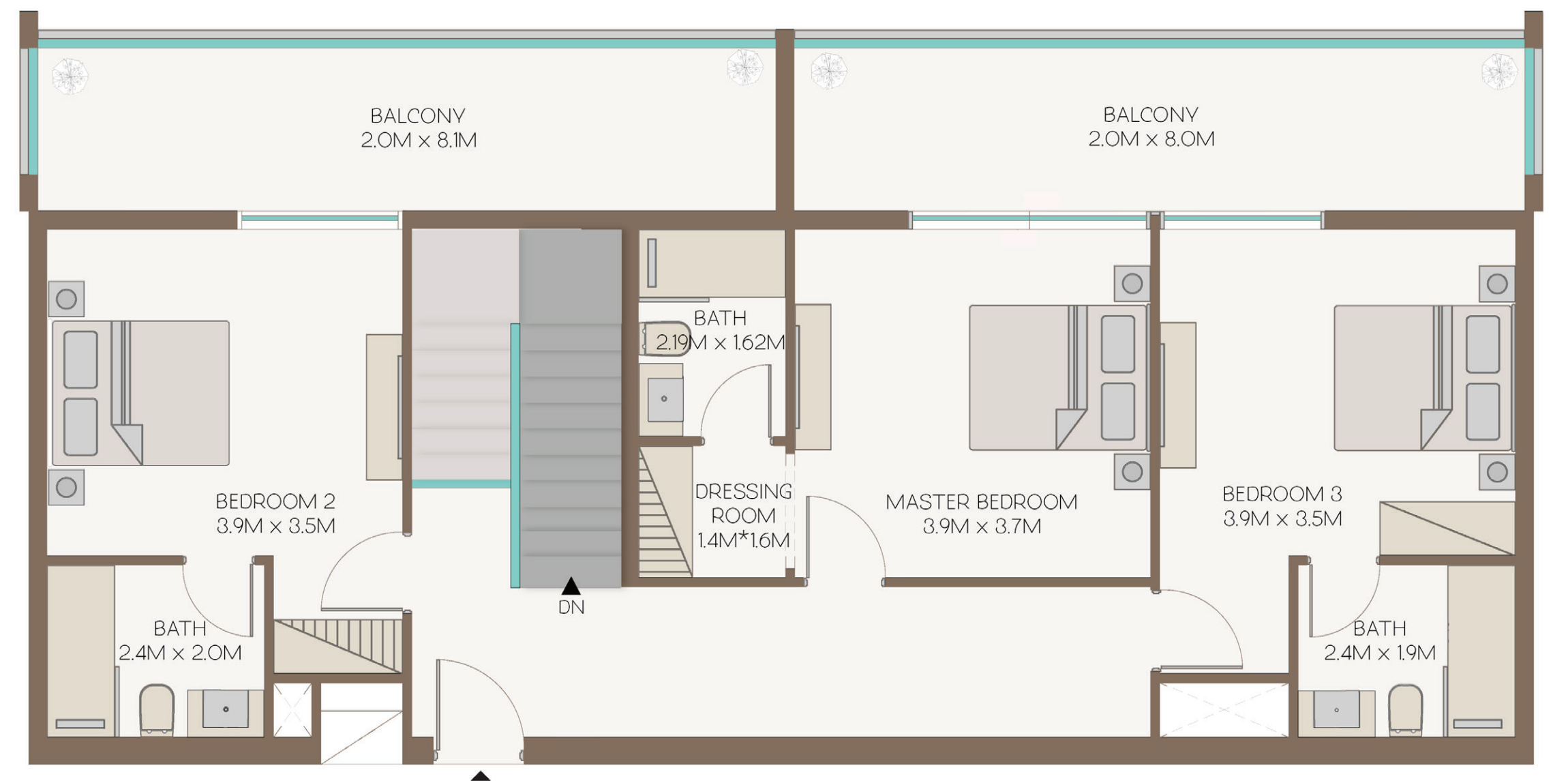
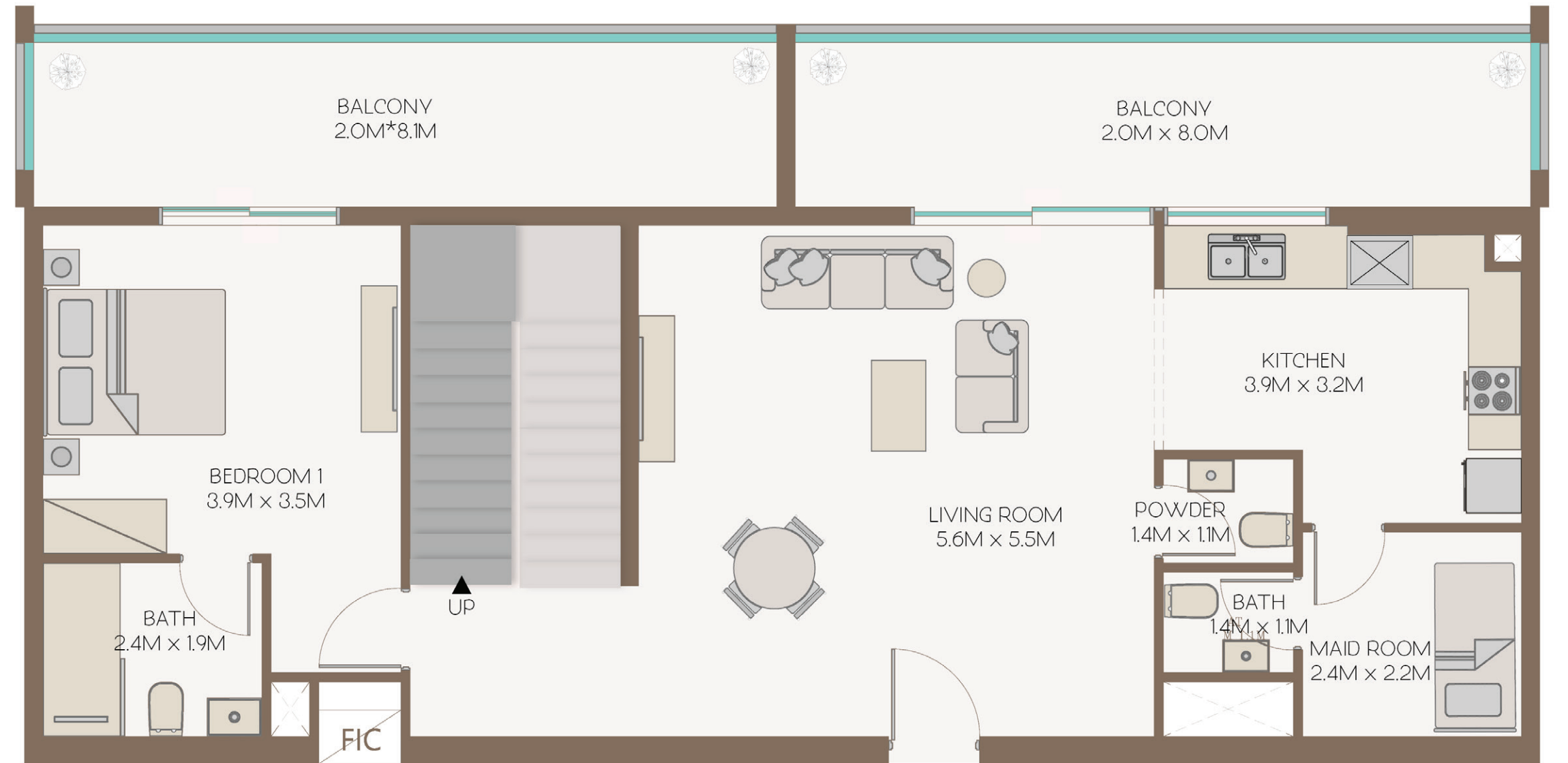
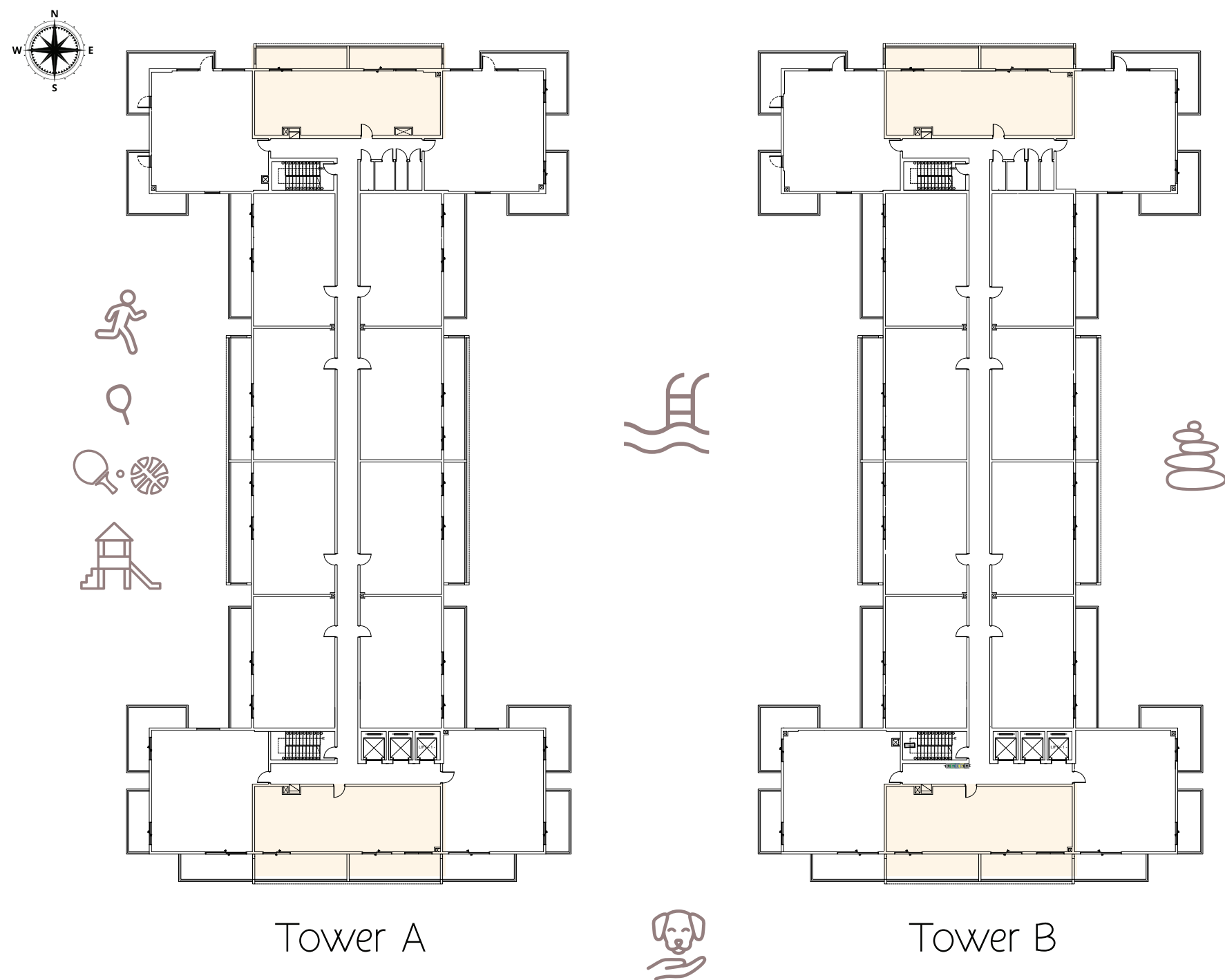


All drawings and dimensions are approximate. Drawings are not to scale and are subject to change without notice. The developer reserves the right to make revisions. The units are measured at typical floor in the building and columns may vary in size depending on the floor level. The furnishings and accessories shown are for representation only. The length and width of the Unit and balcony varies depending on which floor and which orientation the unit is located within the building to comply with the building authority regulations. Apartment unit sizes may vary. Actual unit sizes will be reflected on the Sales and Purchase Agreement.

FLOOR PLAN

4 Bedroom Penthouse + Maid Apartment

Floor	9th - 10th
TYPE A2	Unit No. A 02, 09 - B 02, 09
Suite Area	1,991 sq.ft
Balcony Area	838 sq.ft
Total Area	2,829 sq.ft



FLOOR PLAN

4 Bedroom Penthouse + Maid Apartment

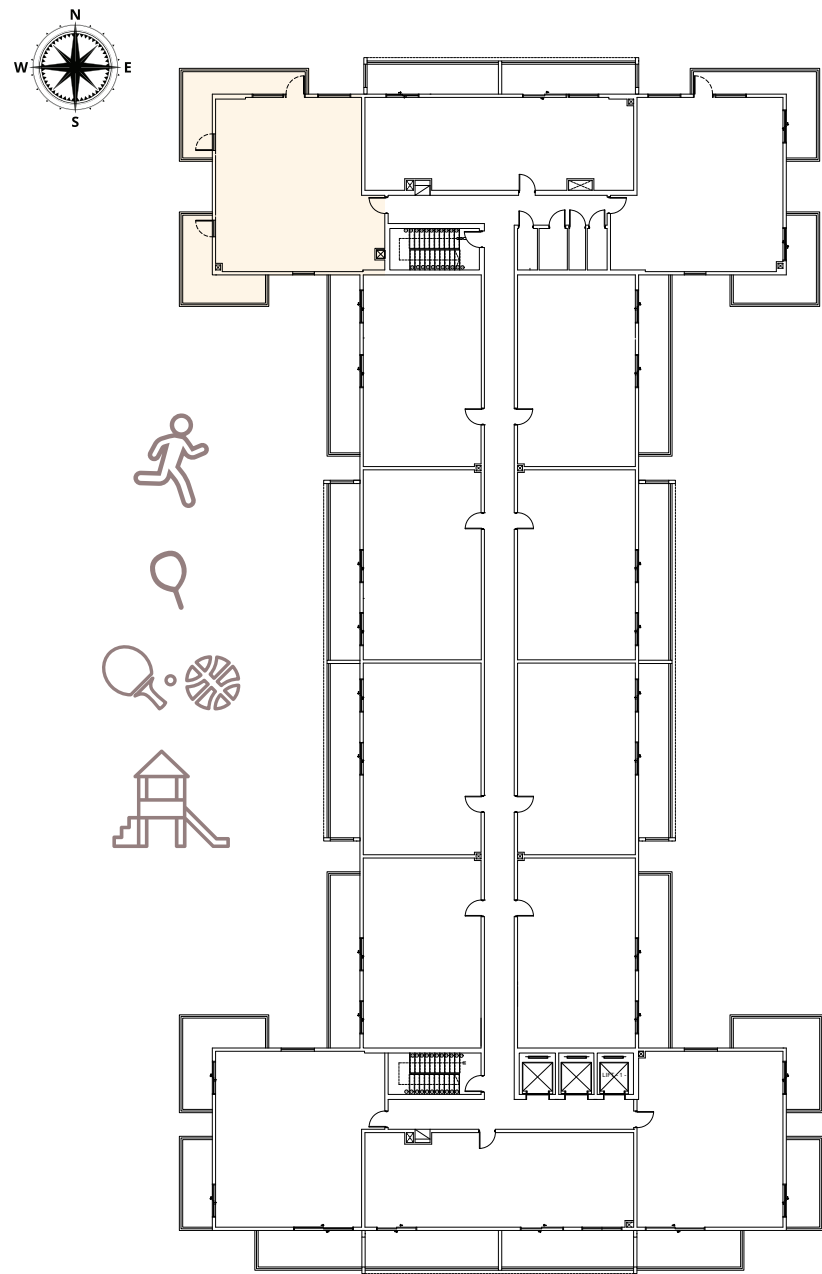
Floor 9th - 10th

TYPE A3 Unit No. A 03 - B 03

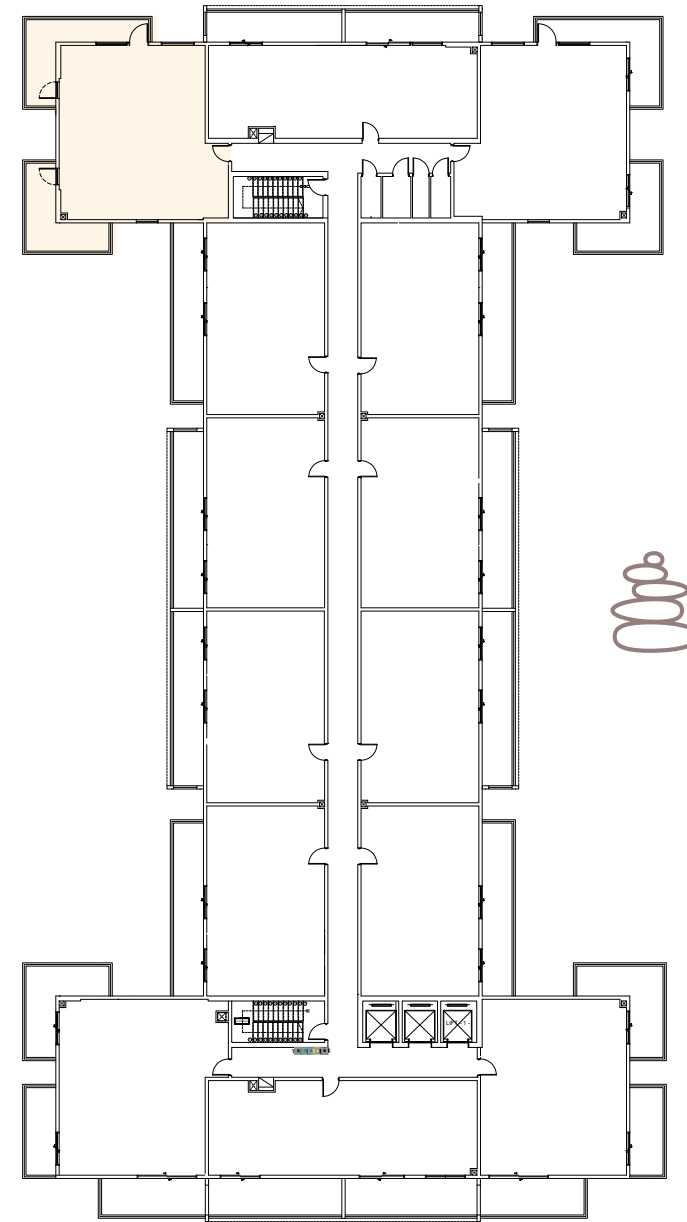
Suite Area 2,162 sq.ft

Balcony Area 842 sq.ft

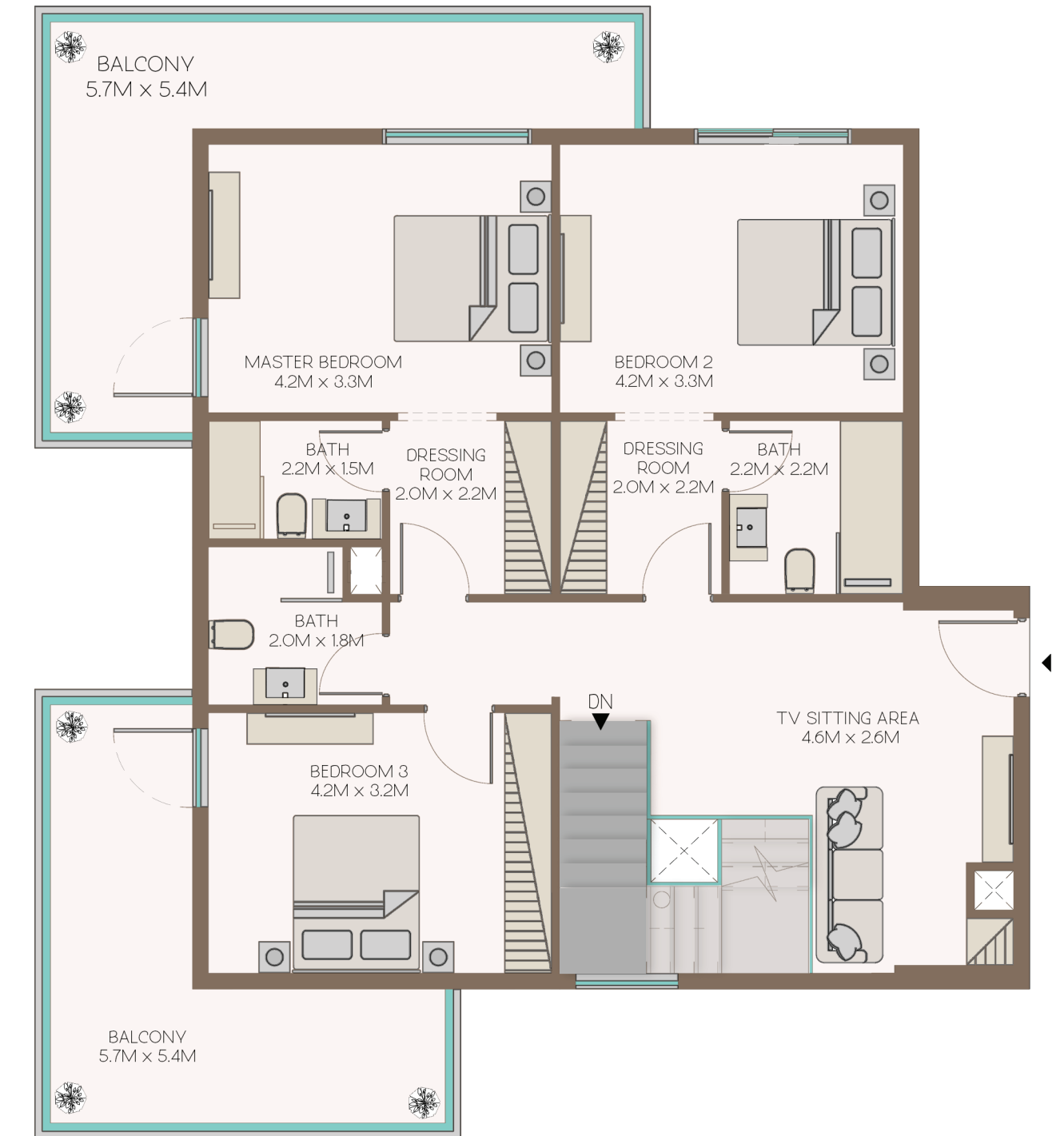
Total Area 3,004 sq.ft



Tower A



Tower B



Price Range

Starting from
880K - 2.3M

Payment Plan
3 Year Post Completion

10% Cash Discount

Note: Limited Offer



3 Year Post Completion Payment Plan

Instalment	Milestone	Instalment Collection %	Total Collection %
1st	Down Payment	10%	10%
2nd	15 Apr 2024	10%	20%
3rd	15 Aug 2024	10%	30%
4th	15 Jun 2025	20%	50%
5th	15 Dec 2025	10%	60%
6th	15 Jun 2026	8%	68%
7th	15 Dec 2026	8%	76%
8th	15 Jun 2027	8%	84%
9th	15 Dec 2027	8%	92%
10th	15 Jun 2028	8%	100%

Note: Limited Offer

Key Selling Points

School & Shopping
Pavilions Nearby

3 Year Post Completion
Payment Plan
30% Till Completion
70% Post Completion

Amazing Location
5 Minutes from
the Metro

10 Minutes Away
from Ibn Battuta Mall

30 Minutes Away
from Dubai Airport

10% Cash Discount

How to book your apartment

Reservation

1. Clients Passport Copy
2. Signed RF, with correct customer details, valid email address and phone number to issue the receipt/s
3. AED 30k EOI required to book units

Note: Limited Offer





BNH Property Real Estate Development and Management is an urban real estate investment and management firm established in the UAE under its founder and CEO and Mr. Muhammad Nasir Muhammad Iqbal partnering with Mr. Muhammad Bilal Muhammad Nasir. BNH focuses on high-growth potential projects in the real-estate sector. The company had already built an excellent reputation for trust and dedication in the UAE when it successfully launched its signature project, Silicon Information Technology Tower, Dubai, UAE. SIT Tower is one of the most valuable and admired real estate developments in Dubai Silicon Oasis. The tower benefits from a prime location, design, facilities, and unsurpassed floor space spread over 25 floors, all of which create an excellent atmosphere for all your business needs. The company is accelerating forward with its ongoing projects at International City Phase-2 and Al Furjan.

TRACK RECORD



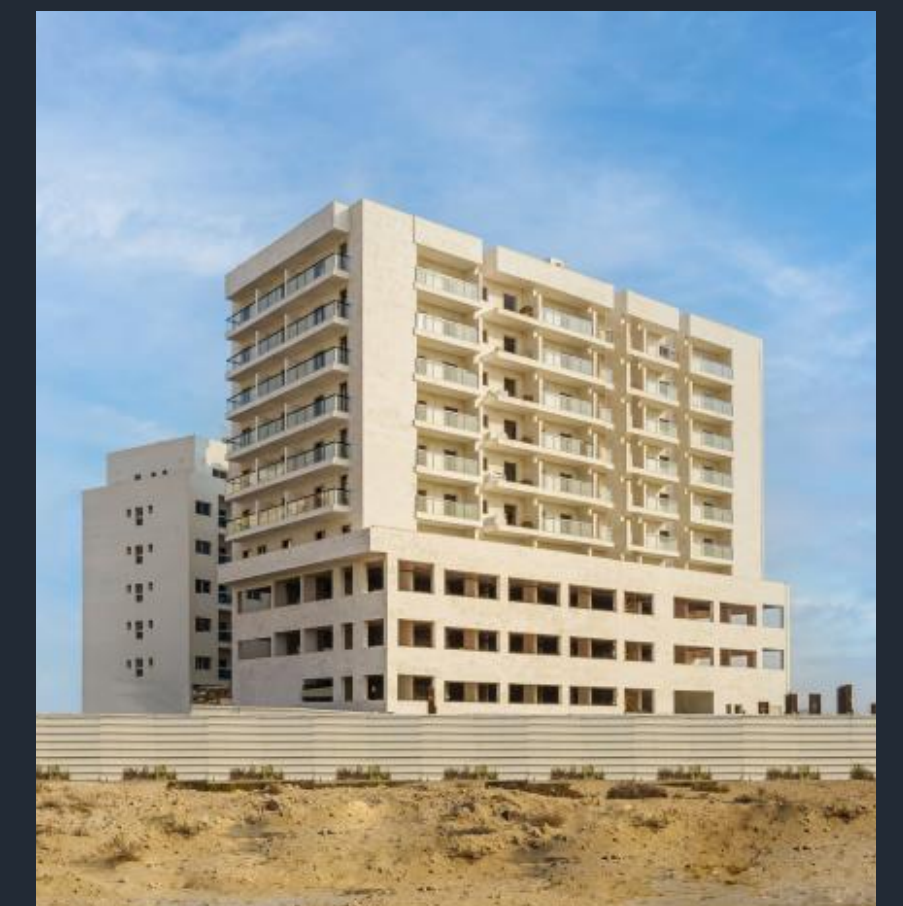
SIT TOWER



SMART TOWER 1



EQUITI RESIDENCE



EQUITI APARTMENTS



Established in 2012, Driven Properties has grown into a leading property brokerage, investment, and consultancy company. Our dedicated team of international agents and staff offer a full spectrum of innovative and customizable property solutions and wealth management services to clients in the UAE and abroad.

TRACK RECORD



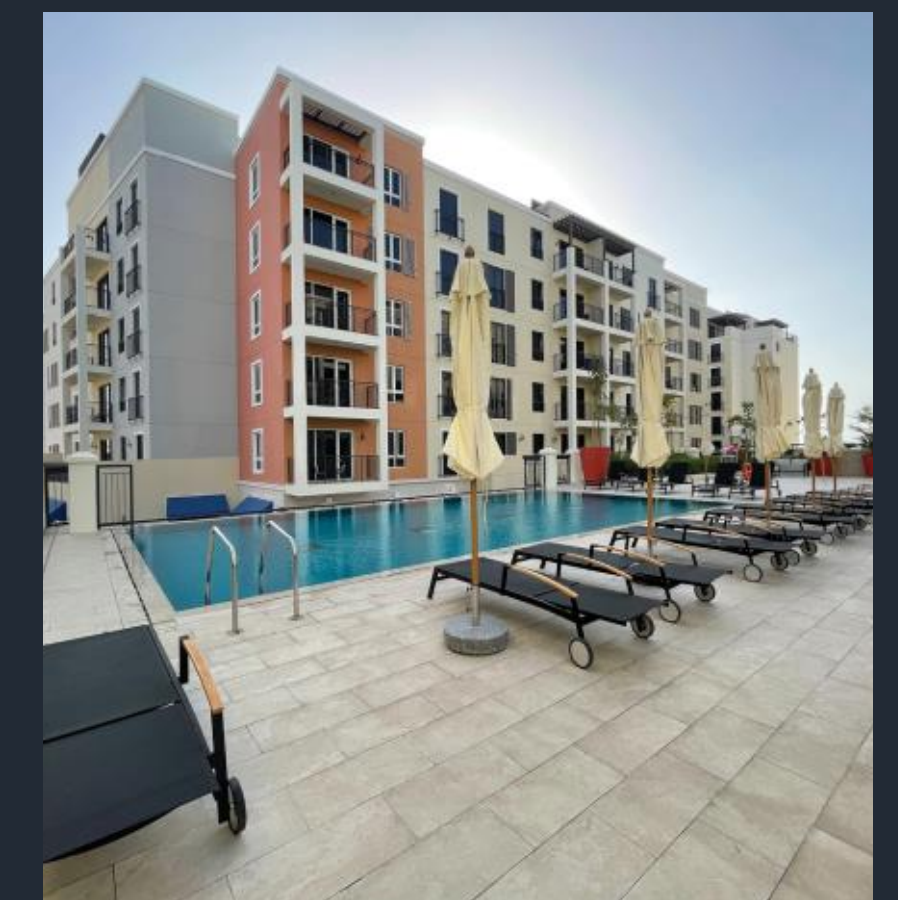
SEA MIRROR
RESIDENCE



CANAL FRONT



CITY WALK



PORT DE LA MER

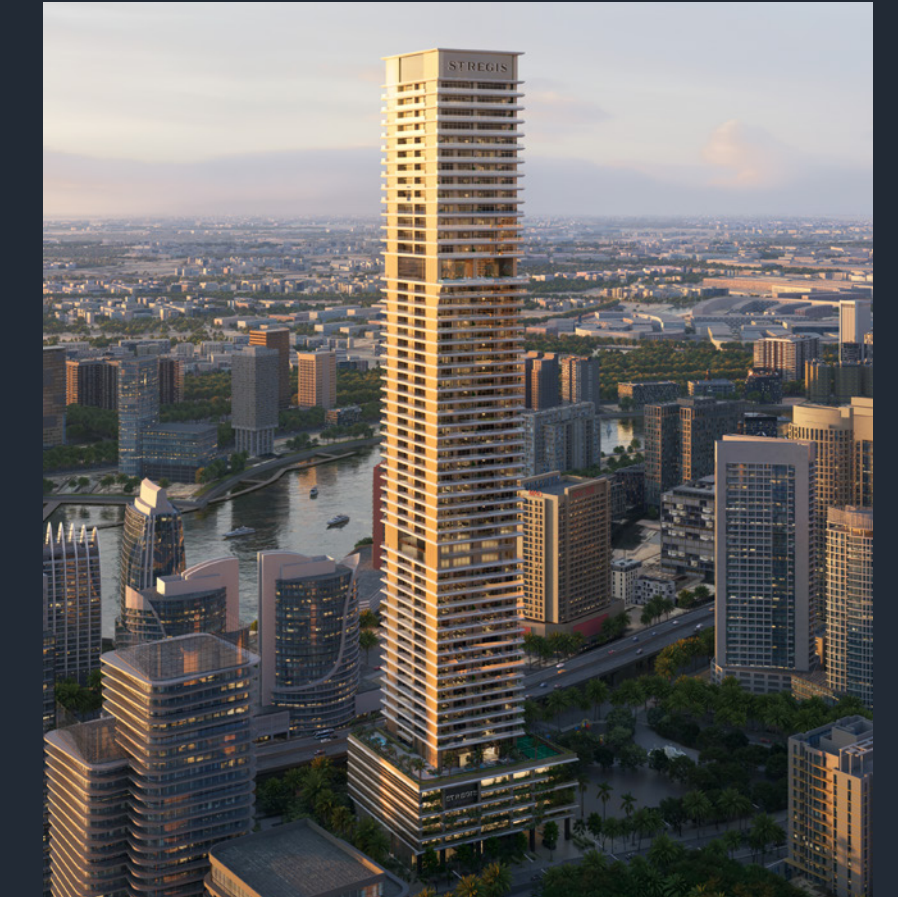
refine

Refine is a renowned development management company backed by a group of highly accomplished real estate developers and experts, with 80 years and 10,000+ units combined development experience. Refine represents the best of all members, striving to excel and relentlessly pursue excellence, providing innovative solutions and refined products for its customers.

TRACK RECORD



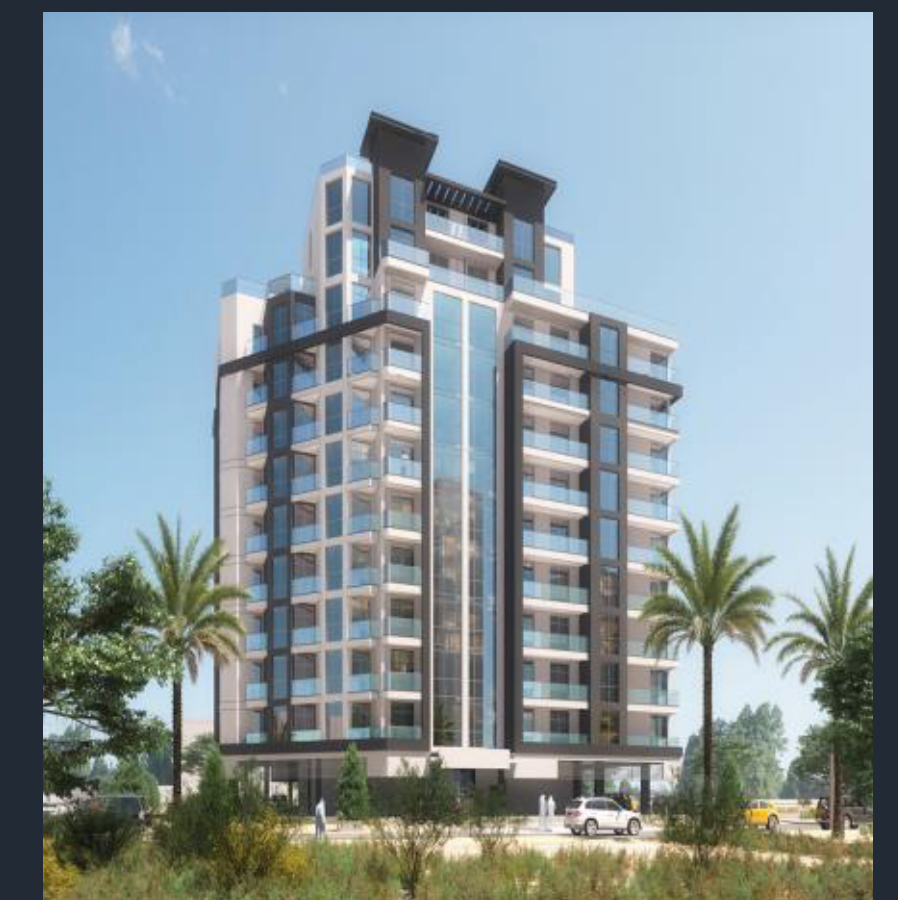
RIXOS



ST. REGIS



J ONE



EDISON HOUSE

Thank You & Happy Selling



refine