



MARRIOTT RESIDENCES
JLT, DUBAI

Floor Plans

February 2025

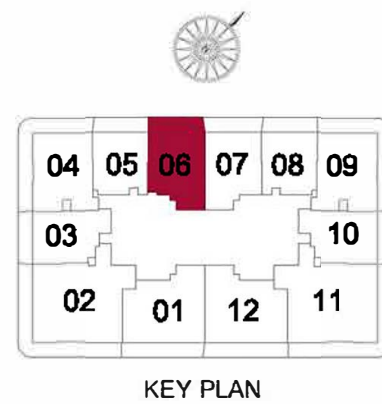
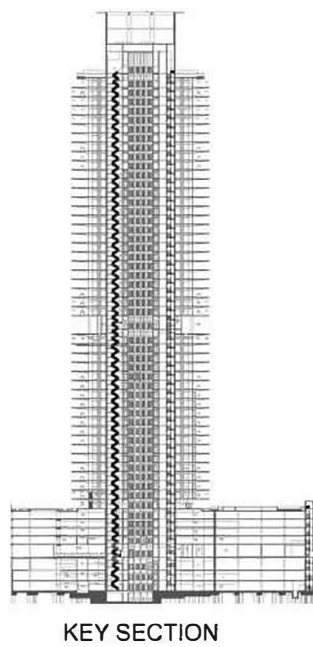


1 BEDROOM TYPE A / UNIT 06

Unit Area = 846.47 SQ.FT. / 78.64 SQ.M.

Balcony Area = 188.69 SQ.FT. / 17.53 SQ.M.

Total Area = 1035.17 SQ.FT. / 96.17 SQ.M.



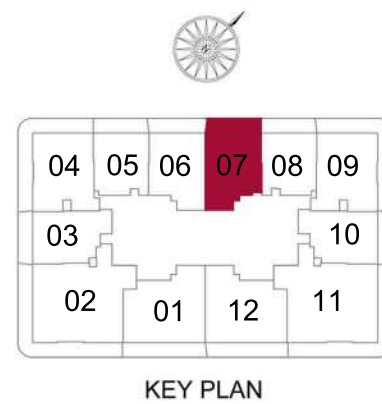
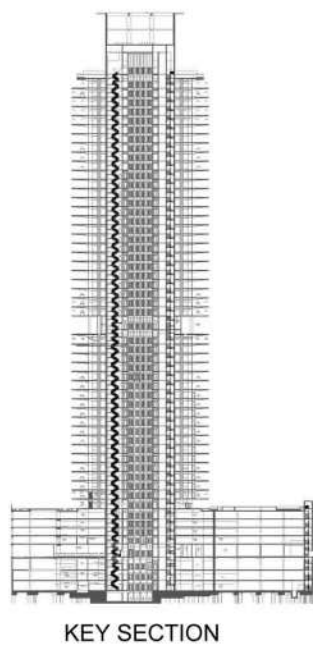
FLOOR PLAN 1. All dimensions are in Imperial and metric, and measured from finish excluding construction tolerance. 2. All materials, dimensions, and drawings are approximate only. 3. Information is subject to change without notice, at developer's absolute discretion. 4. Actual area may vary from the stated area. 5. Drawings not to scale. 6. All images use are for illustrative purposes only and do not represent the actual size, features, specifications, fittings, and furnishings. 7. The developer reserves the right to make revisions / alterations, at its absolute discretion, without any liability whatsoever.

1 BEDROOM TYPE A / UNIT 07

Unit Area = 840.66 SQ.FT. / 78.10 SQ.M.

Balcony Area = 174.48 SQ.FT. / 16.21 SQ.M.

Total Area = 1,015.14 SQ.FT. / 94.31 SQ.M.



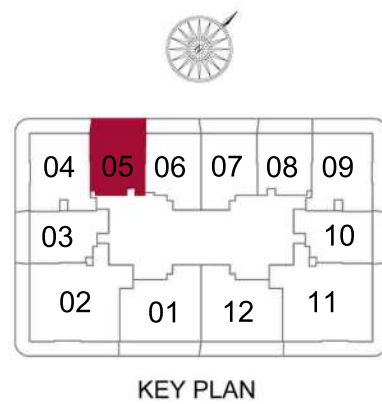
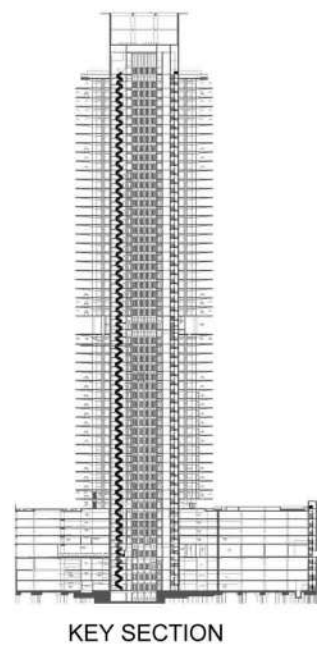
FLOOR PLAN 1. All dimensions are in imperial and metric, and measured from finish excluding construction tolerance. 2. All materials, dimensions, and drawings are approximate only. 3. Information is subject to change without notice, at developer's absolute discretion. 4. Actual area may vary from the stated area. 5. Drawings not to scale. 6. All images use are for illustrative purposes only and do not represent the actual size, features, specifications, fittings, and furnishings. 7. The developer reserves the right to make revisions / alterations, at it's absolute discretion, without any liability whatsoever.

1 BEDROOM TYPE B / UNIT 05

Unit Area = 715.91 SQ.FT. / 66.51 SQ.M.

Balcony Area = 173.84 SQ.FT. / 16.15 SQ.M.

Total Area = 889.74 SQ.FT. / 82.66 SQ.M.



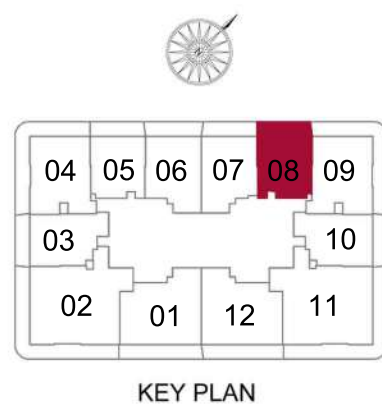
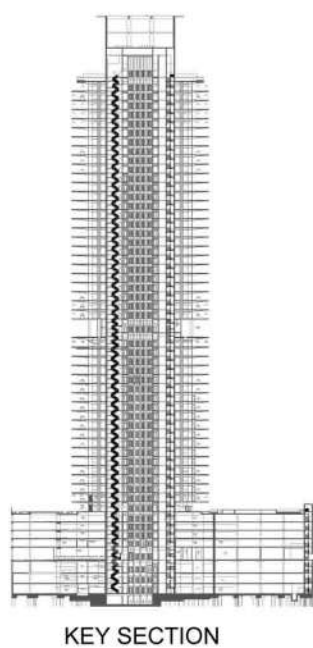
FLOOR PLAN 1. All dimensions are in imperial and metric, and measured from finish excluding construction tolerance. 2. All materials, dimensions, and drawings are approximate only. 3. Information is subject to change without notice, at developer's absolute discretion. 4. Actual area may vary from the stated area. 5. Drawings not to scale. 6. All images use are for illustrative purposes only and do not represent the actual size, features, specifications, fittings, and furnishings. 7. The developer reserves the right to make revisions / alterations, at it's absolute discretion, without any liability whatsoever.

1 BEDROOM TYPE B / UNIT 08

Unit Area = 715.26 SQ.FT. / 66.45 SQ.M.

Balcony Area = 174.59 SQ.FT. / 16.22 SQ.M.

Total Area = 889.85 SQ.FT. / 82.67 SQ.M.

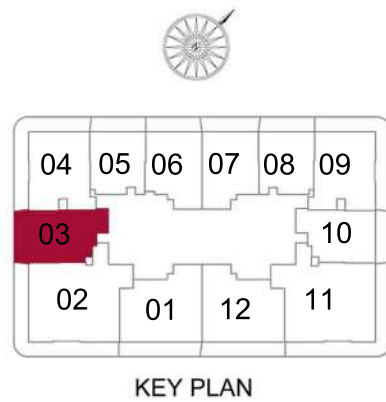
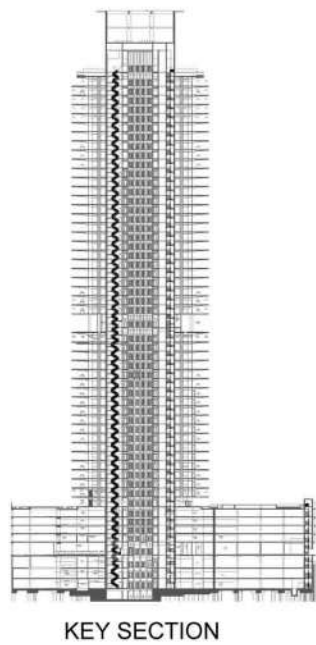


1 BEDROOM TYPE C / UNIT 03

Unit Area = 803.85 SQ.FT. / 74.68 SQ.M.

Balcony Area = 169.21 SQ.FT. / 15.72 SQ.M.

Total Area = 973.06 SQ.FT. / 90.40 SQ.M.



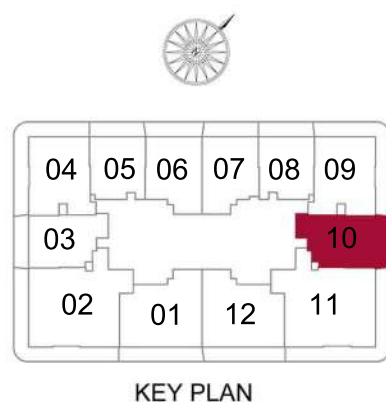
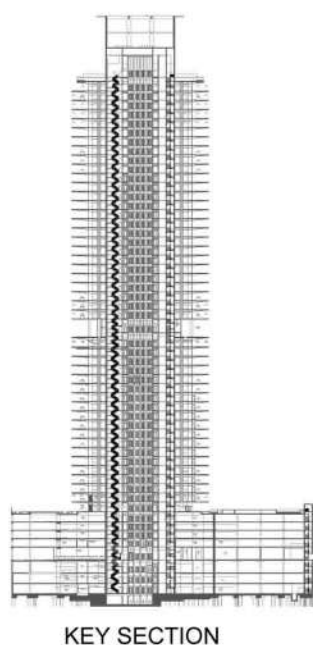
FLOOR PLAN 1. All dimensions are in imperial and metric, and measured from finish excluding construction tolerance. 2. All materials, dimensions, and drawings are approximate only. 3. Information is subject to change without notice, at developer's absolute discretion. 4. Actual area may vary from the stated area. 5. Drawings not to scale. 6. All images use are for illustrative purposes only and do not represent the actual size, features, specifications, fittings, and furnishings. 7. The developer reserves the right to make revisions / alterations, at it's absolute discretion, without any liability whatsoever.

1 BEDROOM TYPE C / UNIT 10

Unit Area = 803.42 SQ.FT. / 74.64 SQ.M.

Balcony Area = 169.32 SQ.FT. / 15.73 SQ.M.

Total Area = 972.73 SQ.FT. / 90.37 SQ.M.

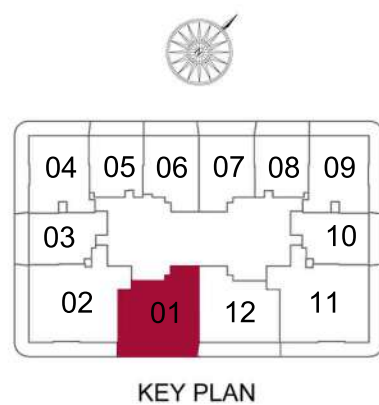
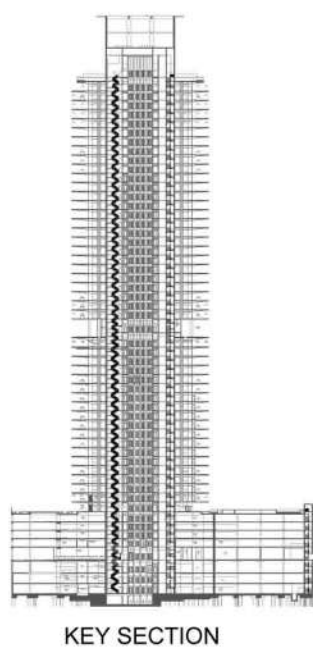


2 BEDROOM TYPE A / UNIT 01

Unit Area = 1143.02 SQ.FT. / 106.19 SQ.M.

Balcony Area = 268.99 SQ.FT. / 24.99 SQ.M.

Total Area = 1412.01 SQ.FT. / 131.18 SQ.M.



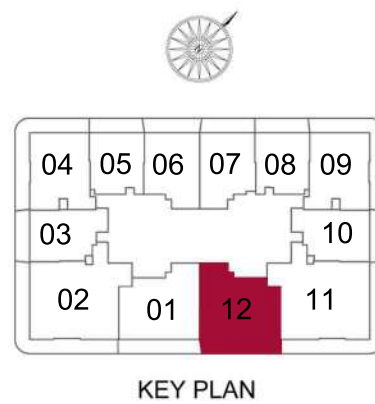
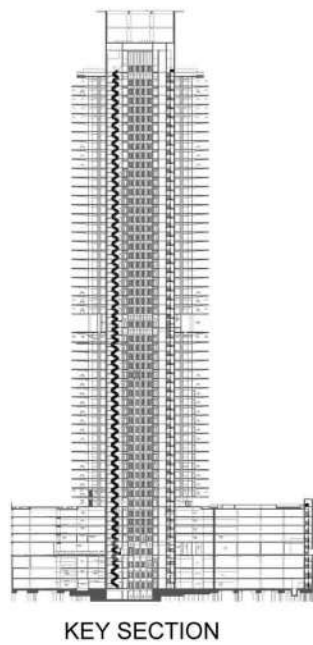
FLOOR PLAN 1. All dimensions are in imperial and metric, and measured from finish excluding construction tolerance. 2. All materials, dimensions, and drawings are approximate only. 3. Information is subject to change without notice, at developer's absolute discretion. 4. Actual area may vary from the stated area. 5. Drawings not to scale. 6. All images use are for illustrative purposes only and do not represent the actual size, features, specifications, fittings, and furnishings. 7. The developer reserves the right to make revisions / alterations, at it's absolute discretion, without any liability whatsoever.

2 BEDROOM TYPE A / UNIT 12

Unit Area = 1143.34 SQ.FT. / 106.22 SQ.M.

Balcony Area = 260.16 SQ.FT. / 24.17 SQ.M.

Total Area = 1403.61 SQ.FT. / 130.40 SQ.M.



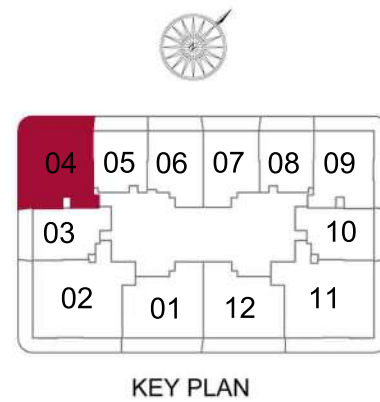
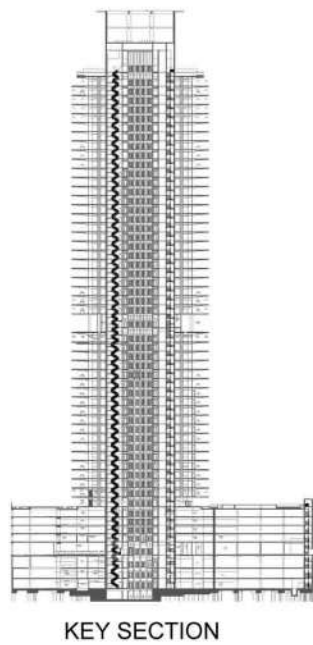
FLOOR PLAN 1. All dimensions are in imperial and metric, and measured from finish excluding construction tolerance. 2. All materials, dimensions, and drawings are approximate only. 3. Information is subject to change without notice, at developer's absolute discretion. 4. Actual area may vary from the stated area. 5. Drawings not to scale. 6. All images use are for illustrative purposes only and do not represent the actual size, features, specifications, fittings, and furnishings. 7. The developer reserves the right to make revisions / alterations, at it's absolute discretion, without any liability whatsoever.

2 BEDROOM TYPE B / UNIT 04

Unit Area = 1016.97 SQ.FT. / 94.48 SQ.M.

Balcony Area = 475.44 SQ.FT. / 44.17 SQ.M.

Total Area = 1492.42 SQ.FT. / 138.65 SQ.M.



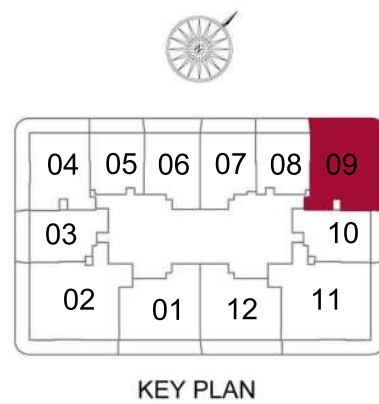
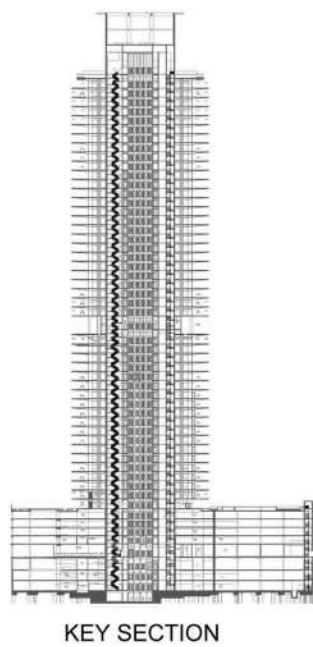
FLOOR PLAN 1. All dimensions are in imperial and metric, and measured from finish excluding construction tolerance. 2. All materials, dimensions, and drawings are approximate only. 3. Information is subject to change without notice, at developer's absolute discretion. 4. Actual area may vary from the stated area. 5. Drawings not to scale. 6. All images use are for illustrative purposes only and do not represent the actual size, features, specifications, fittings, and furnishings. 7. The developer reserves the right to make revisions / alterations, at it's absolute discretion, without any liability whatsoever.

2 BEDROOM TYPE B / UNIT 09

Unit Area = 1016.97 SQ.FT. / 94.48 SQ.M.

Balcony Area = 479.75 SQ.FT. / 44.57 SQ.M.

Total Area = 1496.72 SQ.FT. / 139.05 SQ.M.

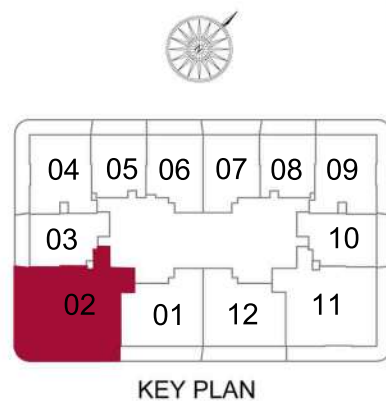
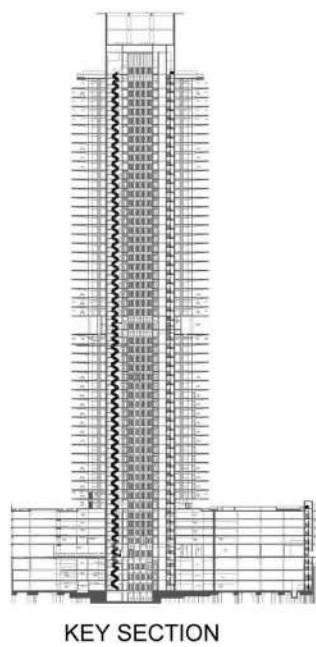


3 BEDROOM / UNIT 02

Unit Area = 1627.07 SQ.FT. / 151.16 SQ.M.

Balcony Area = 567.47 SQ.FT. / 52.72 SQ.M.

Total Area = 2194.55 SQ.FT. / 203.88 SQ.M.

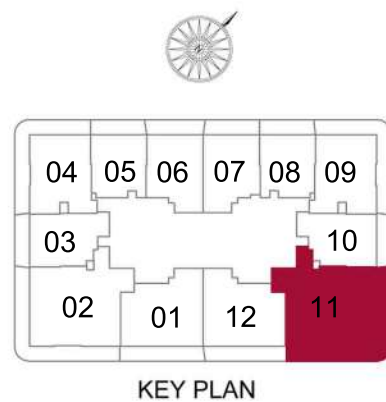
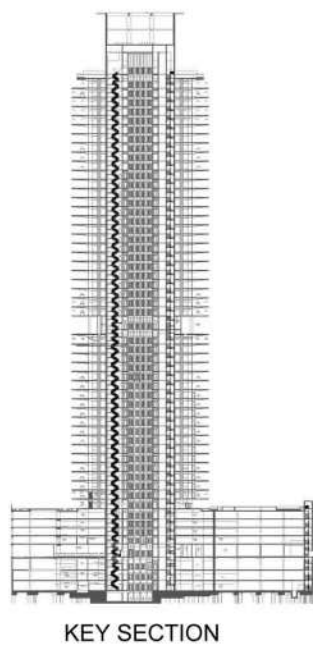


3 BEDROOM / UNIT 11

Unit Area = 1627.07 SQ.FT. / 151.16 SQ.M.

Balcony Area = 567.58 SQ.FT. / 52.73 SQ.M.

Total Area = 2194.65 SQ.FT. / 203.89 SQ.M.



FLOOR PLAN 1. All dimensions are in imperial and metric, and measured from finish excluding construction tolerance. 2. All materials, dimensions, and drawings are approximate only. 3. Information is subject to change without notice, at developer's absolute discretion. 4. Actual area may vary from the stated area. 5. Drawings not to scale. 6. All images use are for illustrative purposes only and do not represent the actual size, features, specifications, fittings, and furnishings. 7. The developer reserves the right to make revisions / alterations, at it's absolute discretion, without any liability whatsoever.

Presented by

EVOLUTIONS