

MOSTAR

MAHAL

BAŞAKŞEHİR



General Information



CONCEPT
FAMILY
BOUTIQUE
PROJECT



LOCATION
BAŞAKŞEHİR



STATUS
Under
Construction



COMMERCIAL
UNITS
3



VIEW
CITY AND
GREEN
VALLEY VIEW



LAND AREA
2500 sqm



LANDSCAPE
AREA
30%



NUMBER OF
BUILDINGS
2 Buildings



NUMBER OF
APARTMENTS
32



TYPE OF
APARTMENTS
4+1
5+1 DUPLEX



SMART HOME
SYSTEM



Legal Information



DELIVERY DATE
JULY 2024



TITLE DEED STATUS
Will be ready on January



TITLE DEED FEES
2%



VAT
8%



VALUATION REPORT
Exact Amount



CITIZENSHIP
Will be suitable on January



Social Facilities



Security



OTOPARK



Land Marks



Transportation

Istanbul Airport	25 Min
Halkalı Marmaray Station	15 Min
Metro	3 Min
E80-	8 Min
O7- New Highway	7 Min



Health

Çam ve Sakura Hospital	5 Min
Başakşehir Hospital	8 Min
BHT CLINIC	8 Min
Kanuni Sultan Süleyman Hospital	10 Min



Shopping

Mall Of Istanbul	8 Min
Arena Park	8 Min
Deposito Shopping Mall	7 Min
Olimpa Shopping Mall	5 Min
212 Shopping Mall	12 Min



Education

Istanbul Kultur University	12 Min
Altınbaş University	12 Min
Ibn Haldun University	10 Min
Al Aqsa international school	7 Min
IZU Istanbul Zaim University	10 Min
Istanbul American School	8 Min
Kudus Koleji	3 Min



Others

Başakşehir Municipality	7 Min
Başakşehir National Park	5 Min
Sular Vadisi	7 Min
Olympic Stadium	4 Min
Şamlar Forest	14 Min
Masko	8 Min
İstoç	12 Min

Exterior Design



Interior Design



4+1

A BLOK



Net Alan :150,75 m²
Genel Brüt Alan :214,06 m²

1-ANTRE	3,51 m ²
2-HOL	9,66 m ²
3-SALON	38,49 m ²
4-MUTFAK	14,36 m ²
5-OTURMA ODASI	16,31 m ²
6-YATAK ODASI	11,93 m ²
7-YATAK ODASI	12,81 m ²
8-EBV. YATAK ODASI	15,80 m ²
9-GİYİNME ODASI	6,04 m ²
10-EBV. BANYO	4,21 m ²
11-BANYO	6,63 m ²
12-ÇAMAŞIR ODASI	4,09 m ²
13-BALKON	6,69 m ²


MOSTAR MAHAL



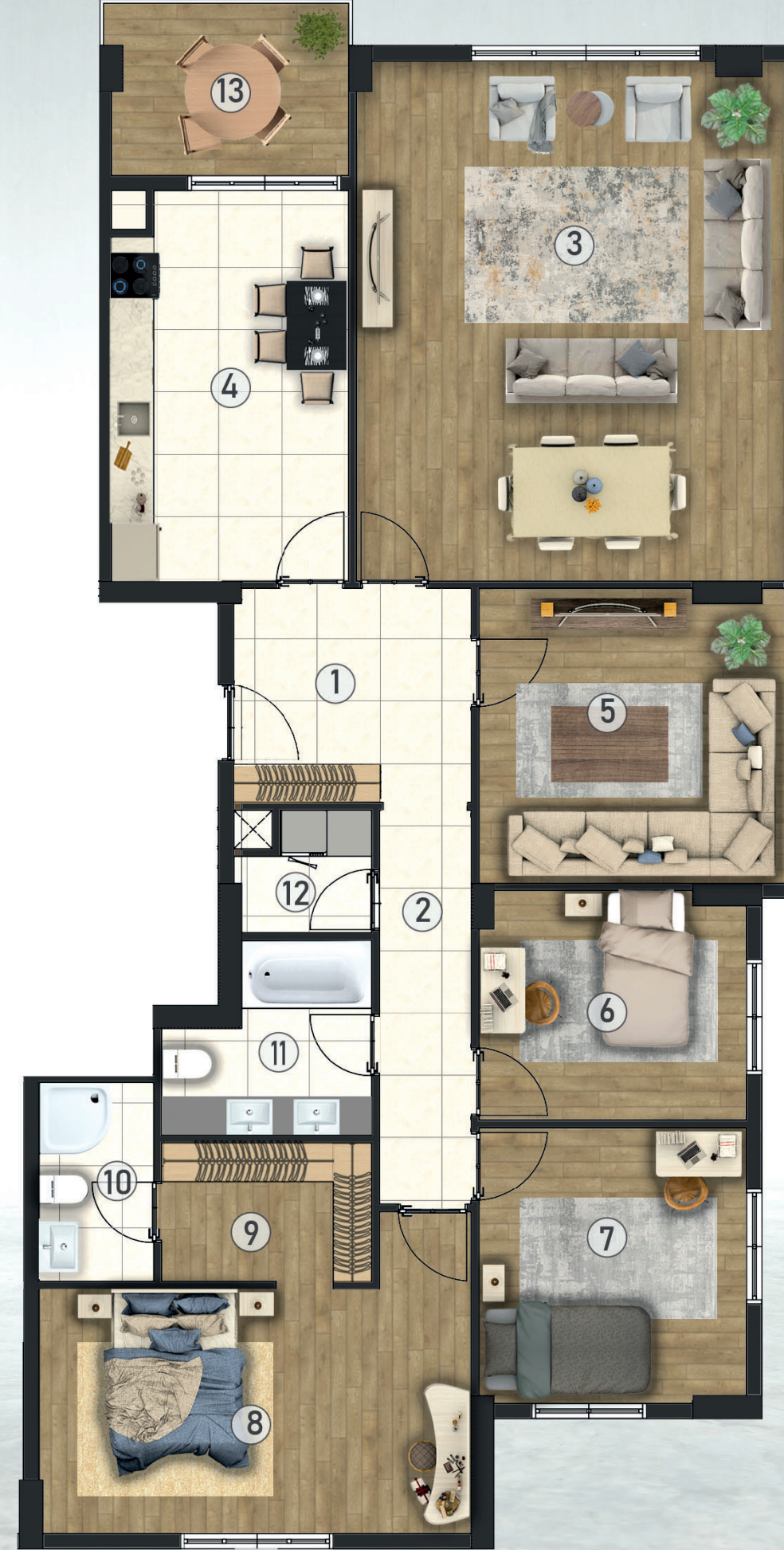
4+1

B BLOK



Net Alan :150,00 m²
Genel Brüt Alan :213,00 m²


1-ANTRE	8,40 m ²
2-HOL	6,30 m ²
3-SALON	37,87 m ²
4-MUTFAK	15,55 m ²
5-OTURMA ODASI	15,22 m ²
6-YATAK ODASI	10,25 m ²
7-YATAK ODASI	12,50 m ²
8-EBV. YATAK ODASI	19,25 m ²
9-GİYİNME ODASI	4,98 m ²
10-EBV. BANYO	3,90 m ²
11-BANYO	5,80 m ²
12-ÇAMAŞIR ODASI	2,42 m ²
13-BALKON	7,37 m ²




MOSTAR MAHAL



MOSTAR MAHAL

-  Basın Ekspres Cd.
-  TEM / E-80
-  MARMARAY
-  M11
-  E-5
-  T1
-  M9
-  M1A / M1B

HOSPITAL

- 1 Çam ve Sakura Hospital..... 3 km, 5 min
- 2 Başakşehir Hospital..... 5 km, 8 min
- 3 BHT CLINIC 6 km, 8 min
- 4 Kanuni Sultan Süleyman Hospital.. 7 km, 10 min

TRANSPORTATION

- 1 Istanbul Airport..... 29 km, 25 min
- 2 Halkalı Marmaray Station..... 12 km, 15 min
- 3 Metro..... 1 km, 3 min
- 4 E-80 5,5 km, 8 min
- 5 O-7 New Highway..... 4,5 km, 7 min

EDUCATION

- 1 Istanbul Kultur University..... 8 km, 12 min
- 2 Altınbaş University..... 8,5 km, 12 min
- 3 İbn Haldun University..... 7 km, 10 min
- 4 Al Aqsa international school 3,4 km, 7 min
- 5 IZU Istanbul Zaim University..... 7,1 km, 10 min
- 6 Istanbul American School..... 3,9 km, 8 min
- 7 Kudus Koleji..... 2,2 km, 3 min

SHOPPING MALLS

- 1 Mall Of Istanbul..... 5,5 km, 8 min
- 2 Arena Park..... 5 km, 8 min
- 3 Deposito Shopping Mall..... 4 km, 7 min
- 4 Olimpa Shopping Mall..... 2 km, 5 min
- 5 212 Shopping Mall..... 8 km, 12 min

OTHERS

- 1 Başakşehir Municipality..... 4 km, 7 min
- 2 Başakşehir National Park..... 3,3 km, 5 min
- 3 Sular Vadisi..... 4 km, 7 min
- 4 Olympic Stadium..... 2,7 km, 4 min
- 5 Şamlar Forest..... 10 km, 14 min
- 6 Masko..... 3,6 km, 8 min
- 7 İstoç..... 8,3 km, 12 min

ESENYURT

ESENYURT

KÜÇÜKÇEKMECE GÖLÜ

KÜÇÜKÇEKMECE

BAHÇELİEVLER

BAKIRKÖY

BAŞAKŞEHİR

BAĞCILAR

GÜNGÖREN

AVCILAR

MARMARA DENİZİ

ATATÜRK HAVALİMANI

YENİBOSNA

ŞİRİNEVLER

MARMARAY

ĞLU

ĞLU

MARMARAY