



RICHMOND PARK
LUXURY DESTINATION VILLAS



**DASHAD
GROUP**
TRUST, INVEST, WIN



**DASHAD
GROUP**

TRUST, INVEST, WIN

WHAT IS LUXURY?

Luxury is

Sophistication

spoken in a whisper

We believe that luxury comes in the thoughtfulness of small details, executed perfectly. It speaks softly, quietly and is never loud or ostentatious.

Luxury doesn't have a point to prove.





Luxury is an

Experience

- an index to life

We measure our lives
experiences, not in years, not
in time. How often we create
those experiences, their
richness and their depth is
what make for a truly
luxurious life.



RICHMOND PARK

LUXURY DESTINATION VILLAS

THE NEW HEART OF YENIBOGAZICI

The Richmond park project is a Luxury Boutique Collection of Villas with an ethos of privacy and exclusivity. Designed in the Mediterranean Villa style, no one villa overlooks another. Located in **Yenibogazici** area /Famagusta in 1000 m away from sandy beaches, these villas ensure great views, with open, airy spaces and will be fitted with top-of-the-line accoutrements for your comfort.

I N D E X

- Design
- Style
- Nature
- Yeni Bogaziçi
- The Richmond Park
- Project
- Floor Plans
- Location
- About Us

A person wearing a brown, textured, sleeveless dress is shown from the side, reaching out with their right hand to touch a pink flower in a field of tall grasses. The person is wearing a dark brown beaded bracelet on their right wrist. The background is a soft-focus landscape of tall grasses and a bright sky, suggesting a natural, outdoor setting. The overall mood is peaceful and connected to nature.

In The Midst Of Untouched Nature

The Project features unparalleled amenities throughout. No matter what reflects your mood-of-the-moment. No matter where you relax, you'll be surrounded by the best in materials, finishes, fixtures and design touches you'd expect in a home this complete.

UNPARALLELED DESIGN



STYLE AND DURABILITY



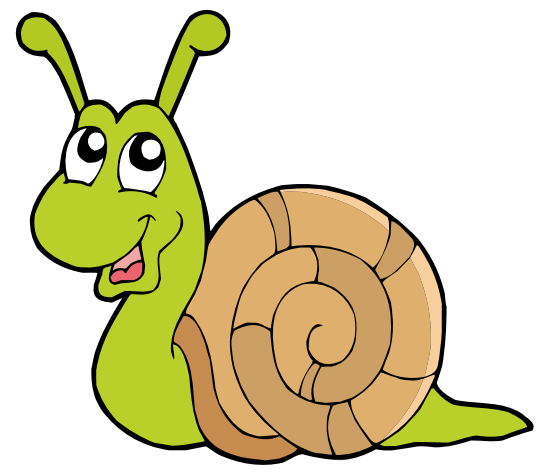
Commitment to quality, care and attention to detail, is at the heart of everything we do at Dashad Group,
as Dashad says

"put simply, we build quality homes we are proud of. Homes you'll love to live in, built with care and thought."

A five-year warranty is just the start. We ensure the homes are finished to the highest standard and all the elements that make up your home are carefully chosen for quality, style and durability.

Flexible and adaptable to fit every lifestyle, making the most of natural light and incorporating open plan spaces, the exciting mix of designs at Richmond Park means that you're sure to fall in love with where you live.

**HAVE YOU EVER HEARD OF A
"CITTASLOW"?
"SLOW TOWNS"**



Yeni Boğaziçi

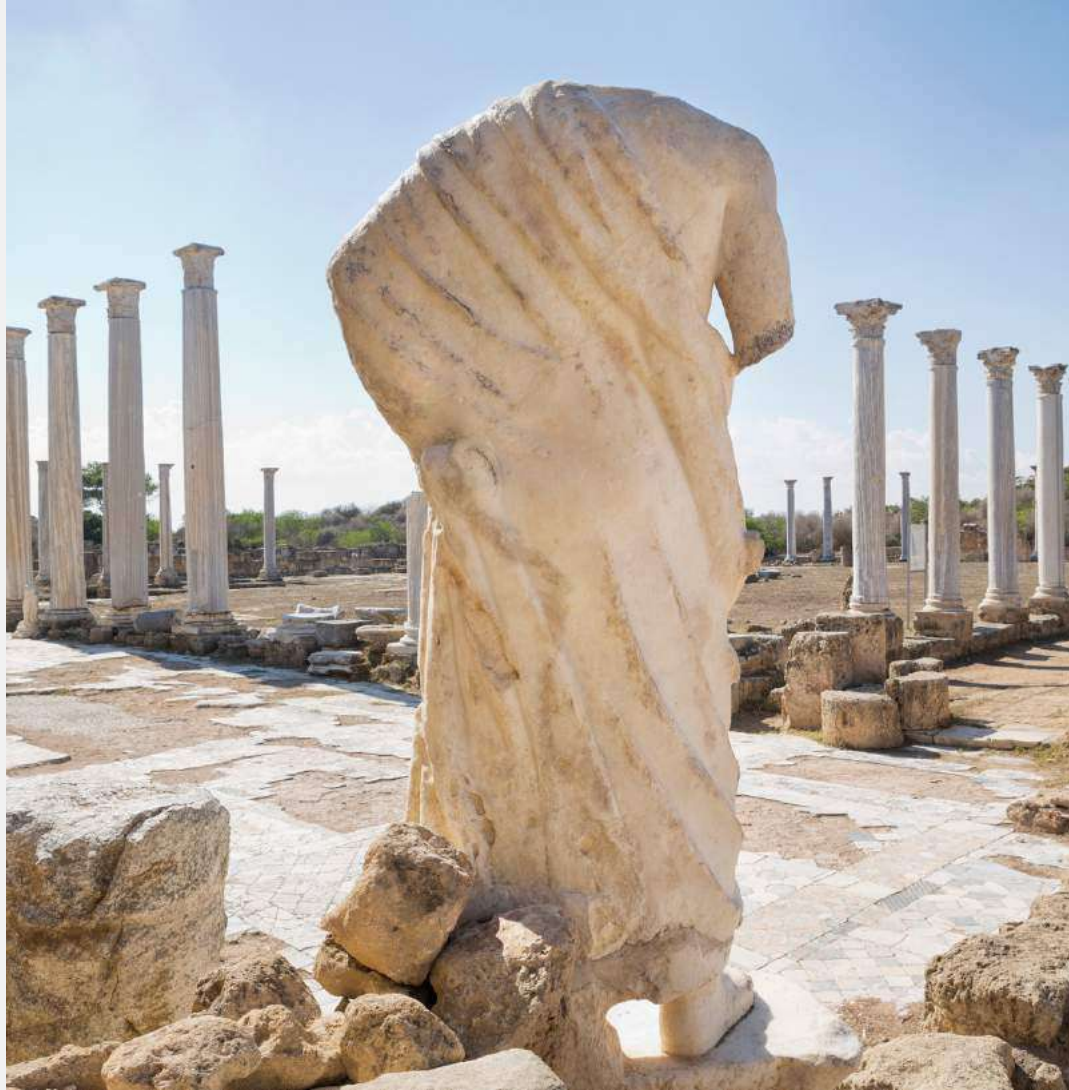
What is a Slow City? Cittaslow

Cittaslow is a forward thinking movement that aims to combat the stresses of modern life, and slow down the pace of life, improve the quality of life, care for the environment, promote a healthy lifestyle, and preserve the special nature of local cultures.

Cittaslow is all about raising the overall quality of life for local residents.



The Option to Experience Untrammelled Tranquility



Discover Yenibogacizi and discover what this thriving Famagusta countryside has to offer. One trip and you're hooked!

Incredibly well-served by just about every amenity you can think of and with real personality, Yenibogazici is a unique area you're going to love.

Slower pace of life 



The Option to Experience an Untouched Culture



Richmond Park

Luxury is

The Ability to Take a Pause

It is the ability to take time out from the pressures of daily life, let the mind re-charge, let it re-set, to let your mind breathe and be free. There is no greater luxury than a free mind.

Yenibogazici sandy beaches



FALL IN LOVE WITH WHERE YOU LIVE

SITE PLAN



Richmond Park project is located in Yeni Bogazici Area with a short walking distance from Yeni Bogazici Sandy beaches, just 3 minutes from The Historical Salamis Ancient City and 5 minutes to Famagusta city. It is an ideal location for those who want to have all services at hand and, at the same time, enjoy privacy and tranquility.

There are three different types of villa and a total of 10 units of Luxury villa consisting of 4 and 3 bedrooms. And one block of double story apartments comprises of 6 units of luxury 1+1 and 2+1 flats.

Here, you don't have to go far from your home looking for natural surroundings.



Because sometimes you can have it all!

Apartment block

3 BEDROOM VILLAS

3 BEDROOM BUNGALOWS

4 BEDROOM VILLAS

3 BEDROOM VILLAS

4 BEDROOM VILLA

3 BEDROOM BUNGALOWS

4 BEDROOM VILLAS



Type A



**4+1 Fully Detached villa of 293 m² - 33.77 m² of terraces
situated on a 400 m² plot.**





SUMMER DINING

The summer dining area creates an intimate corner for friends and family to enjoy outside cooking, dining and drinking. All connected to the pool area and integrated with the landscaped gardens.





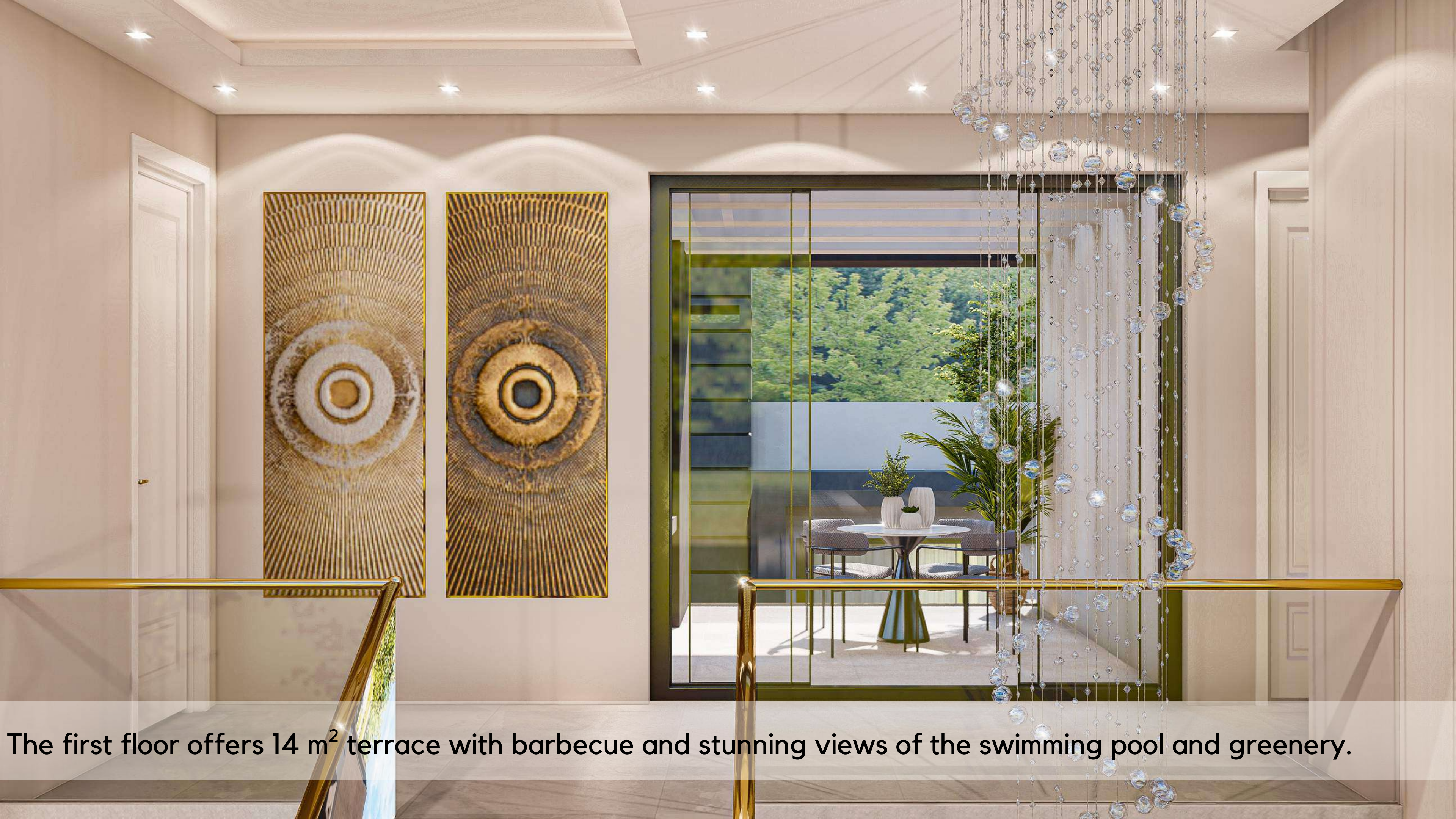
Naturally exclusive,
naturally luxurious





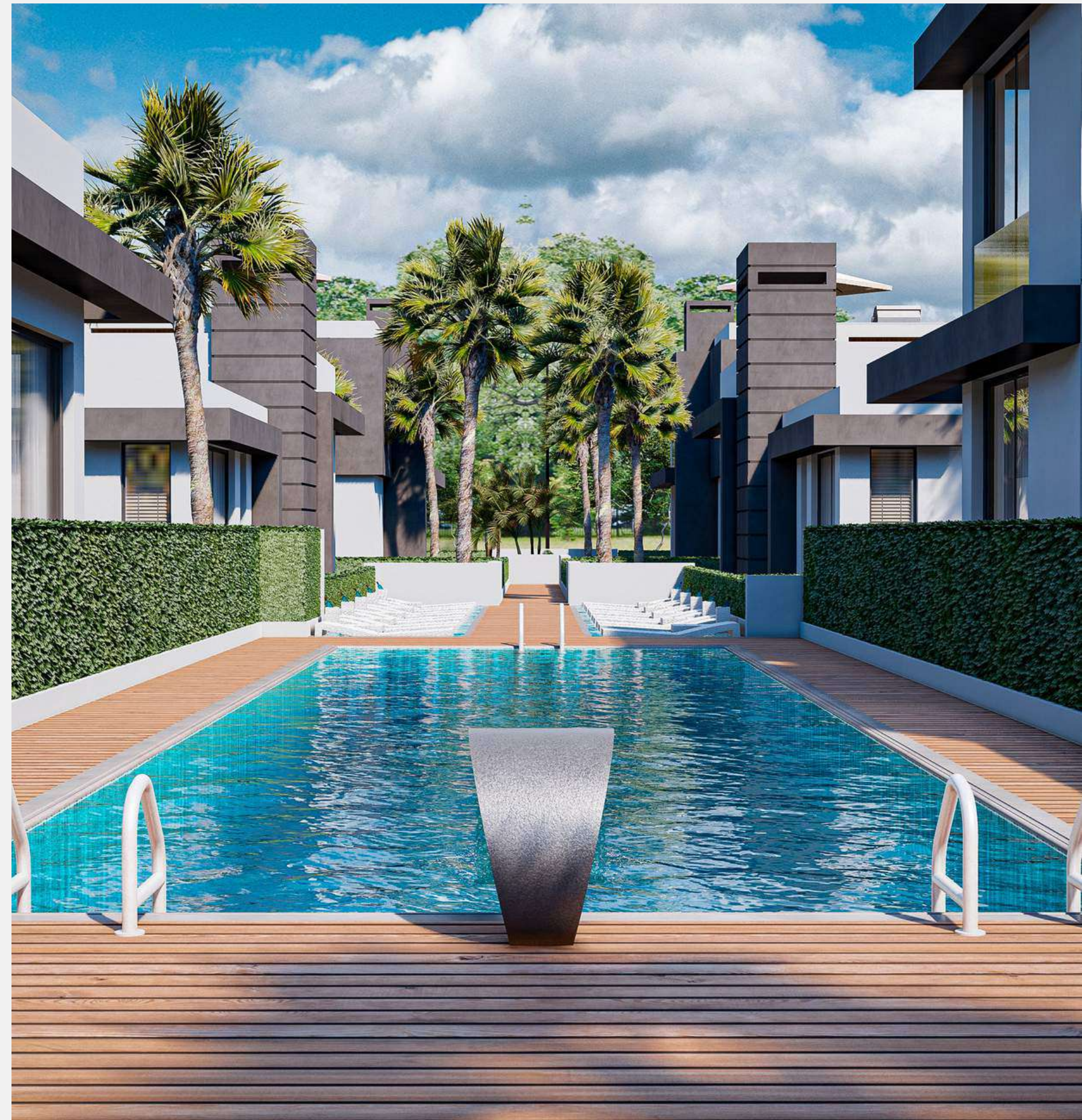
Healthier living spaces with plenty of natural light





The first floor offers 14 m² terrace with barbecue and stunning views of the swimming pool and greenery.

The perfect place for your morning coffee !





A private place free from intrusion



Bathroom

You deserve the best

We expect our bathrooms to provide full relaxation and to offer a place to unwind and enjoy some peace and tranquility. Our main challenge in bathroom design is to meet your needs within the best materials, confines of space and provide a great looking addition to your home.

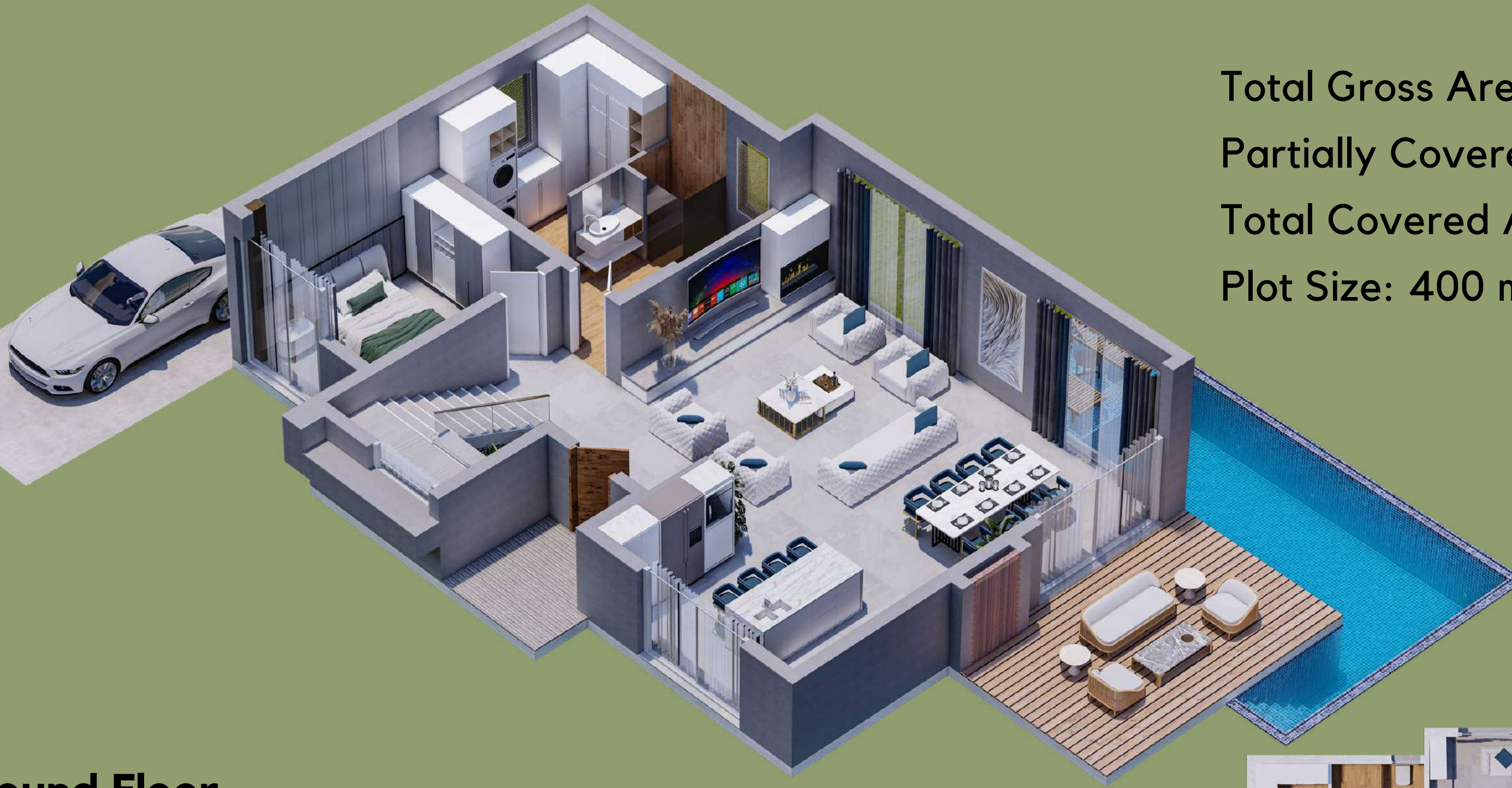




Laundry Room



Total Gross Area: 293 m²
Partially Covered Balcony: 33.77 m²
Total Covered Area: 240 m²
Plot Size: 400 m²

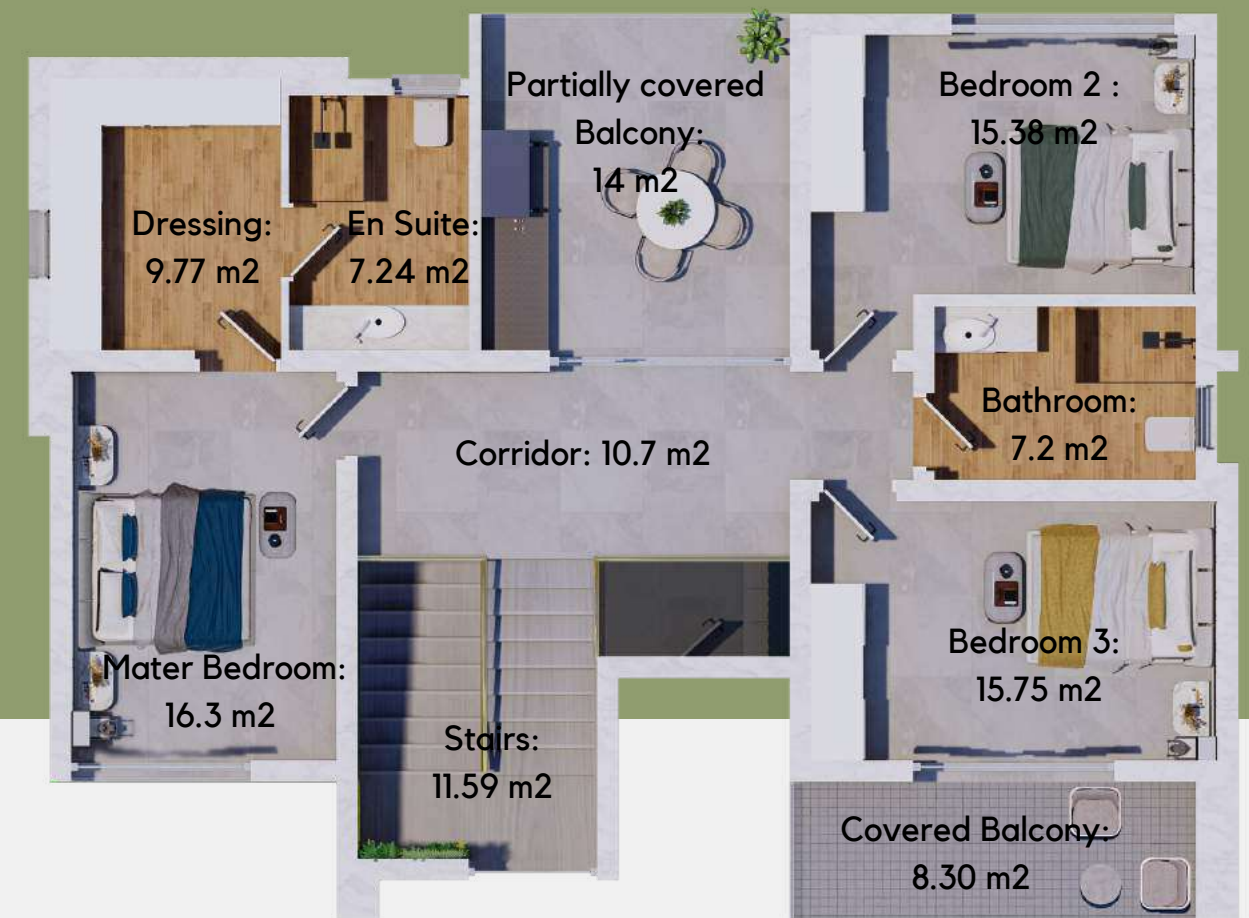


Ground Floor





First Floor



SPECIFICATIONS AND MATERIALS

4+1 Fully Detached villa of 293 m²- 33.77 m² of terraces situated on a 400 m² plot.

4 bedrooms

3 luxury bathrooms

Spacious Living room

Hallway

Laundry room

High quality floor covering

Option of ceramic and parquet throughout the house

The Stylish Unique Front Door

High quality Acrylic kitchen cabinets with cooking island

Built-in wardrobes in the bedrooms

Master bedroom with walk-in closet and en-suite bathroom

Window sills made of natural marble

Double-glazed Heat Insulated Aluminum Windows

Suspended ceiling in the entrance hall, living room and kitchen

Glass Staircase Rails

Glass balcony Railing

Outdoor parking with Pergola style

Outdoor and covered terraces

Wall-hung toilet Pan with Built-in Reservoir

Washbasins with Cabinet

Flat Shower and Tempered Glass Cabinets

TV/Satellite Infrastructure System

Internet/Data Infrastructure System

Additional services:

Pool 7*3 And 8*4

Household appliances and furniture

Fireplace

Garden Fireplace and Barbecue

VRF air conditioning system

Type B



3+1 Fully Detached Luxurious High Ceiling bungalow of 200 m²- 15.2 m² of terraces situated on a 400 m² plot.







This is where you come for understated luxury, where refinement meets comfort.



**DAYS IN
PERFECT RHYTHM
EXPERIENCES AT RICHMOND PARK**





Magical corner that inspires you to cook

AN EXCLUSIVE RESIDENTIAL RETREAT





Total Gross Area: 200 m²
 Partially Covered Balcony: 15.20 m²
 Total Covered Area: 165 m²
 Plot Size: 400 m²

Floor Plan



SPECIFICATIONS AND MATERIALS

3+1 Fully Detached Luxurious High Ceiling bungalow of 200m²-
15.2 m² of terraces situated on a 400m² plot.

3 bedrooms

2 luxury bathrooms

Spacious Living room

Hallway

High quality floor covering

Option of ceramic and parquet throughout the house

High quality Acrylic kitchen cabinets with cooking island

Utility Room

The Stylish Unique Front Door

Built-in wardrobes in the bedrooms

Master bedroom with walk-in closet and en-suite bathroom

Window sills made of natural marble

Double-glazed Heat Insulated Aluminum Windows

Suspended ceiling in the entrance hall, living room
and kitchen

Outdoor parking with Pergola style

Outdoor and covered terraces

Wall-hung toilet Pan with Built-in Reservoir

Washbasins with Cabinet

Flat Shower and Tempered Glass Cabinets

TV/Satellite Infrastructure System

Internet/Data Infrastructure System

Additional services:

Pool 7*3 And 8*4

Household appliances and furniture

Fireplace

Garden Fireplace and Barbecue

VRF air conditioning system

Type C



**3+1 Fully Detached villa of 219 m² - 13 .95 m² of terraces
situated on a 300 m² plot.**







Ultra luxury living in harmony
with nature.



A deep connection to nature



Living room

The heart of your home

The open-plan living space with fireplace is the heart of the home. It has been specially designed to facilitate the contemporary living and invites the bright natural light in, creating an atmosphere of optimism and positivity.









Bedroom

We promise you a good night sleep

The bedroom is a sanctuary. It is a place of escape, rest, and renewal. It is one of the most intimate spaces of your home. We will aim to bring every element of your bedroom to come together to reflect your personality and create the perfect relaxing environment.







Total Gross Area: 215.9 m² - 219.95 m²

Partially Covered Balcony: 13.95 m²

Total Covered Area: 201.95-206 m²

Plot Size: 300 m²



Ground Floor



First Floor



SPECIFICATIONS AND MATERIALS

3+1 Fully Detached villa of 219m² - 13 .95 m² of terraces situated on a 300m² plot.

3 bedrooms

2 luxury bathrooms

Spacious Living room

Hallway

High quality floor covering

Option of ceramic and parquet throughout the house

High quality Acrylic kitchen cabinets with cooking island

The Stylish Unique Front Door

Built-in wardrobes in the bedrooms

Master bedroom with walk-in closet

Window sills made of natural marble

Double-glazed Heat Insulated Aluminum Windows

Suspended ceiling in the entrance hall, living room and kitchen

Glass Staircase Rails

Glass balcony Railing

Outdoor and covered terraces

Outdoor parking with Pergola style

Wall-hung toilet Pan with Built-in Reservoir

Washbasins with Cabinet

Flat Shower and Tempered Glass Cabinets

TV/Satellite Infrastructure System

Internet/Data Infrastructure System

Additional services:

Household appliances and furniture

Fireplace

Garden Fireplace and Barbecue

VRF air conditioning system

Apartment Block



Richmond Park is best described as a luxury boutique residence where ultimate style meets impeccable design. Here, this island-style development splits over just 6 spacious one and two-bedroom Garden/ Roof Garden apartments.

The true magic, however, lies in Richmond Park's seamless indoor-outdoor design. This allows for a harmonious blend of nature and luxury, where every apartment benefits from generously sized terrace area and garden, which would allow owners the ability to take full advantage of the enjoyable Cyprus climate.



Inspired Design

Impeccable Style





2+1 Ground floor Garden Flat + 70 m² Private Garden



2+1 First floor Roof Garden Flat + 56 m² Private Roof Garden

Total Gross Area: 114 m²

Balcony: 24 m²

Garden : 70 m²

Roof Garden: 56 m²

Total Covered Area: 90 m²



2+1 Garden/Roof Garden Flats Floor Plan

SPECIFICATIONS AND MATERIALS

114 m² Flats, 24 m² Terrace+ 70 m² Garden Area/56 m² Roof

Garden Area

2 bedrooms

Luxury bathroom

Spacious Living room

High quality floor covering

Option of ceramic and parquet throughout the house

High quality Acrylic kitchen cabinets

Built-in wardrobes in the bedrooms

The Stylish Unique Front Door

Green wall facade

Window sills made of natural marble

Double-glazed Heat Insulated Aluminum Windows

Suspended ceiling in the living room and kitchen

Glass balcony Railing

Outdoor and covered terraces

Outdoor Parking

Boiler

Wall-hung toilet Pan with Built-in Reservoir

Washbasins with Cabinet

Flat Shower and Tempered Glass Cabinets

TV/Satellite Infrastructure System

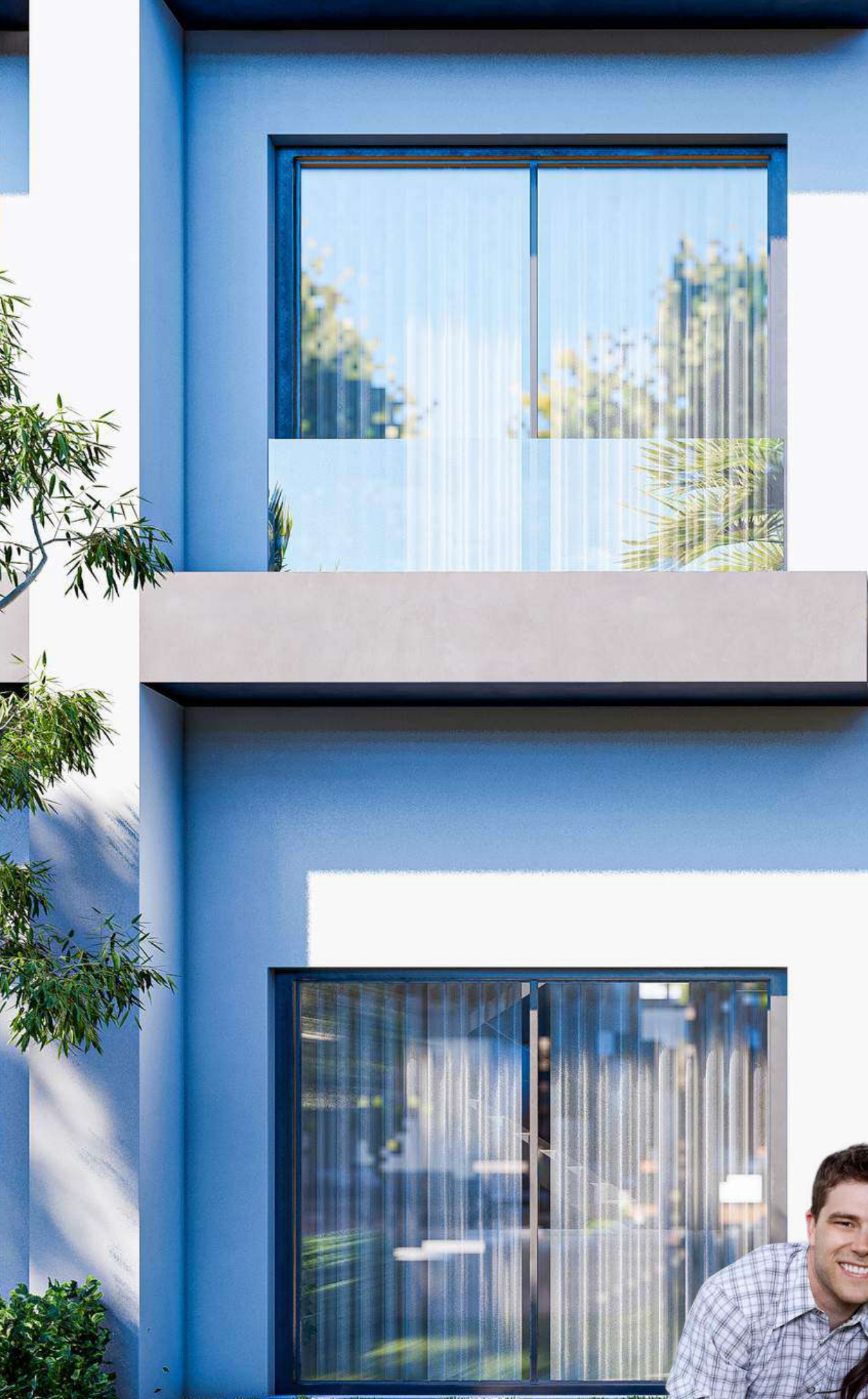
Internet/Data Infrastructure System

Additional services:

Household appliances and furniture

Barbecue

VRF air conditioning system



1+1 Ground floor Garden Flat + 26 m² Private Garden





1+1 First floor Roof Garden Flat + 28 m² Private Roof Garden

Total Gross Area: 83 m²

Balcony: 10 m²

Garden: 26 m²

Roof Garden: 28 m²

Total Covered Area: 73 m²



**1+1 Garden/ with Roof Garden Flats
Floor Plan**

SPECIFICATIONS AND MATERIALS

83 m² Flats, 10 m² Terrace+ 26 m² Garden Area/28 m² Roof Garden

Area

1 bedroom

Luxury bathroom

Spacious Living room

High quality floor covering

Option of ceramic and parquet throughout the house

High quality Acrylic kitchen cabinets

Built-in wardrobes

The Stylish Unique Front Door

Green wall facade

Window sills made of natural marble

Double-glazed Heat Insulated Aluminum Windows

Suspended ceiling in the living room and kitchen

Glass balcony Railing

Outdoor and covered terraces

Outdoor Parking

Boiler

Wall-hung toilet Pan with Built-in Reservoir

Washbasins with Cabinet

Flat Shower and Tempered Glass Cabinets

TV/Satellite Infrastructure System

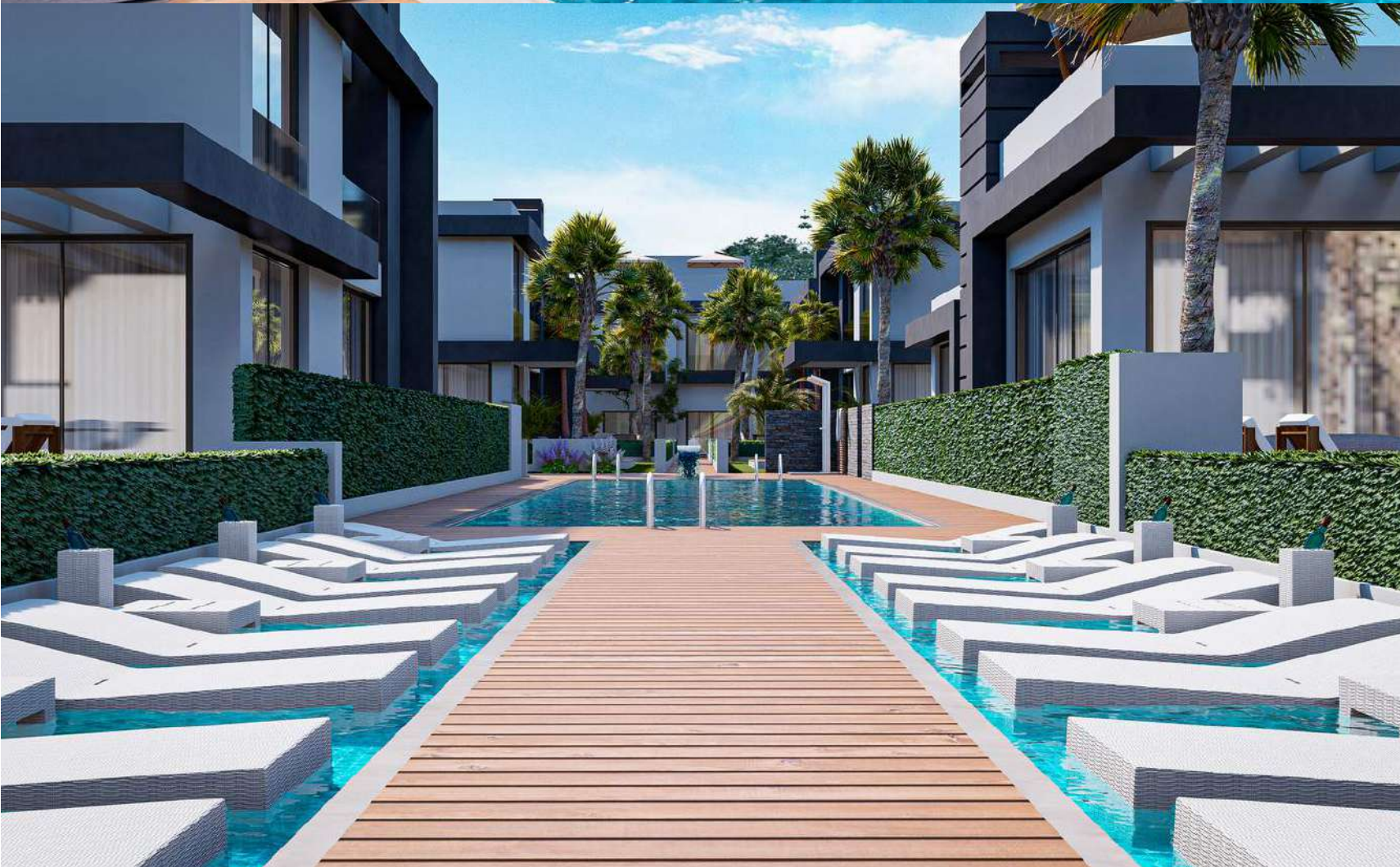
Internet/Data Infrastructure System

Additional services:

Household appliances and furniture

Barbecue

VRF air conditioning system



Richmond Park Social Amenities



ENCHANTED

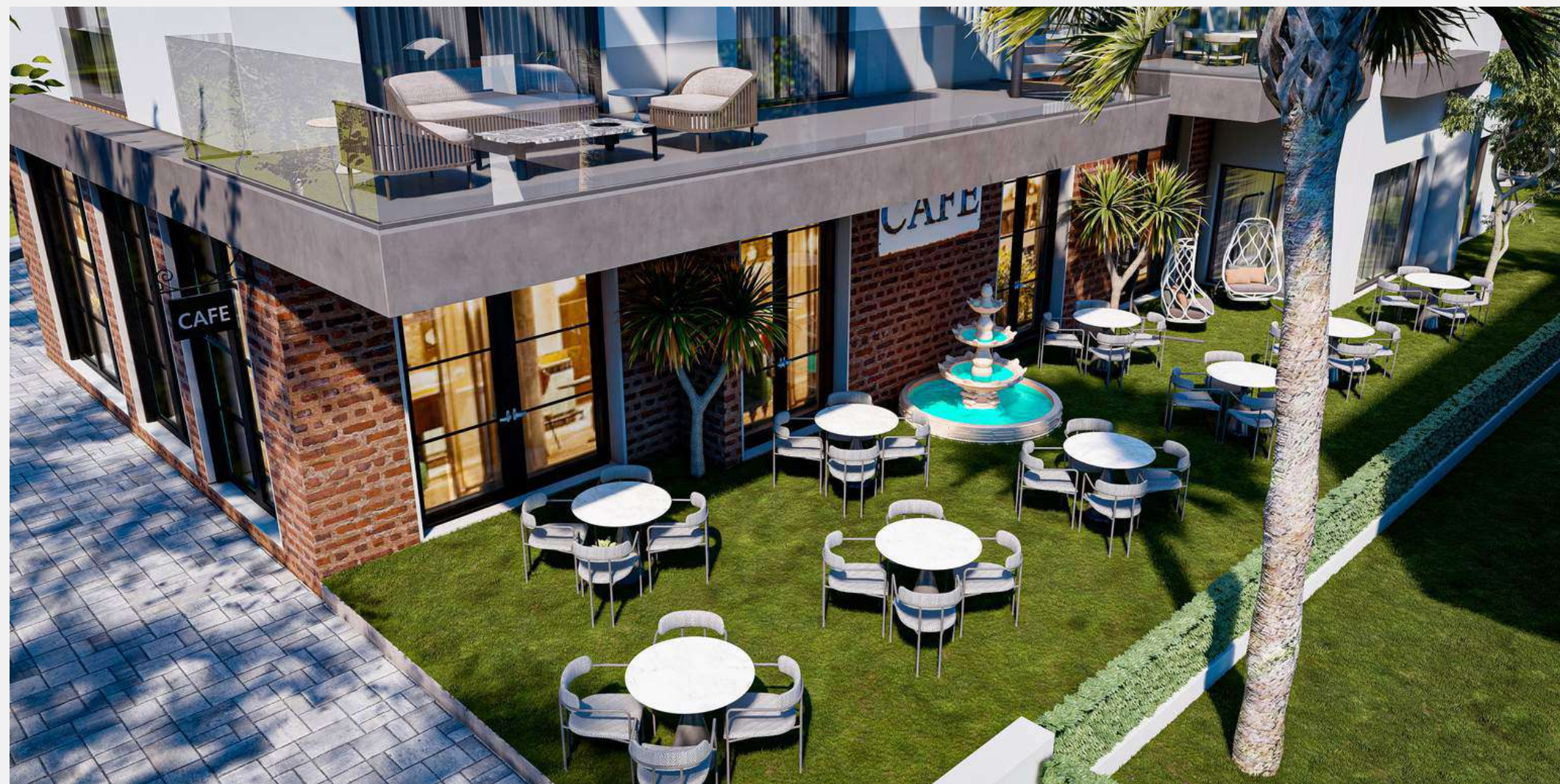
This is how life at Richmond Park feels like.

Savor the resort style living at home. Richmond Park offer extensive options to live your life to the fullest. Amenities that will charm and leave you enchanted.



CAFE

CAFE

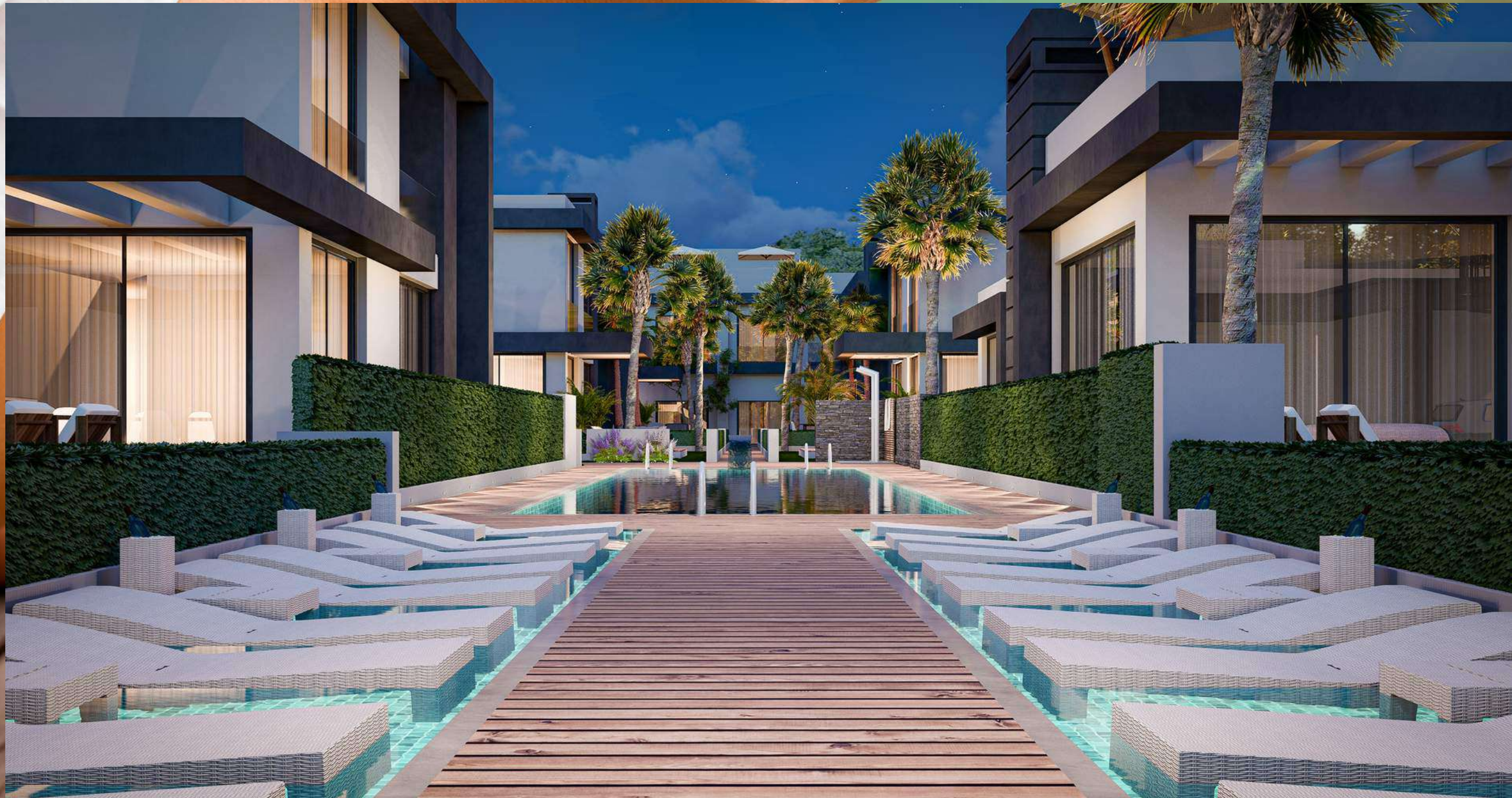


MOMENTS OF PERFECT JOY



HERE'S WHERE THE
MIND
STOPS SEARCHING FOR MORE.

Ideal place for meditation





MINDFUL planning for every member of the family.

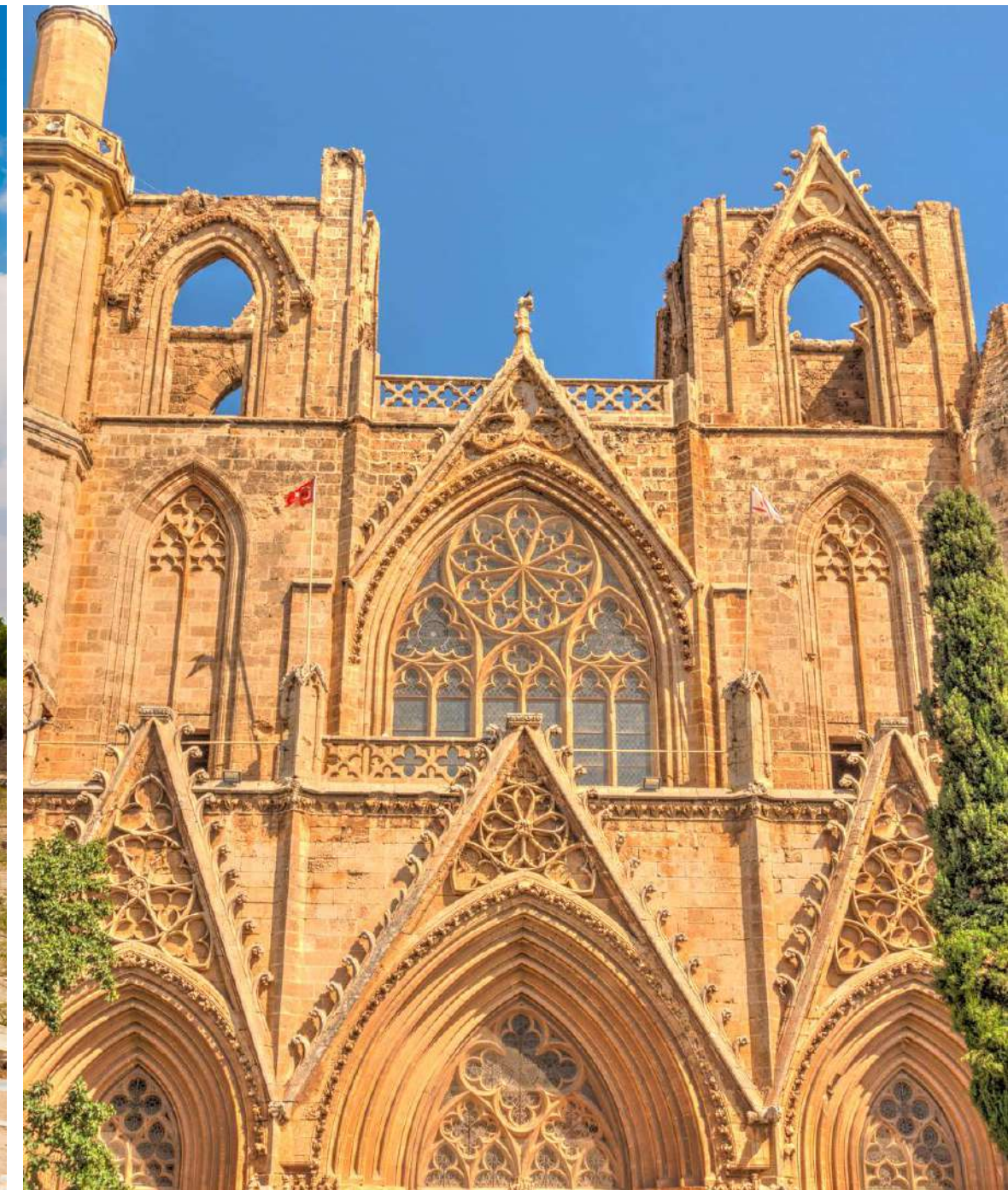
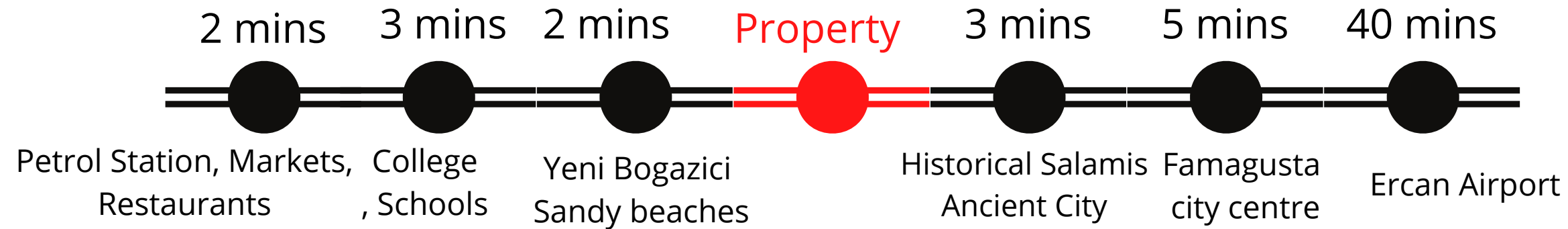
Having somewhere to go is a house, having someone there who you love is a home. And a dream home is a place where every member of the family has amenities at their doorstep. Amenities for our elders as well as amenities for our children will ensure that a home becomes a legacy and one which transcends time itself.

Children's Play Area



To anywhere your heart desires!

From business to pleasure the ultra-luxurious Mediterranean style villas at Richmond Park are in close proximity to all the things your heart desire!





Salamis Bay Hotel



Kel'in Yeri



Alpet Petrol Station



Ambelia Resturant



1000 m

Richmond Park



**A Location
That Speaks For Itself**

We are not
Real Estate Developers

We are
Experientialists



DASHAD
GROUP

TRUST. INVEST. WIN

To think beyond
brick and mortar,
beyond square footage
and floor area ratios.

To think of spaces as
**the backdrop
to experiences**

we call that thinking

Experientialism

and that is our core philosophy.

We think from the perspective of what a space should feel like; what state-of-mind it should evoke; what luxuries it must provide-and then begin planning a project. It becomes the crux of our decisions on what destinations to choose, which locations and what the design of our villas should be.

We believe that the truest experiences are located where the **mindscapes** is in harmony with the **landscape**.

It is this belief that defines us.



RICHMOND PARK

*Do you want 'something different'? Would you love to live in a
stunning, contemporary designed home?*

*Then welcome to **Richmond Park!***



**DASHAD
GROUP**

TRUST, INVEST, WIN