



F. PANORAMA

Alkent
Büyüçekmece

Marmara Sea and
Büyükçekmece
Lake view at the
same time



ABOUT PROJECT

Building Company:

Gül İnşaat + Delta Yatırım Holding

Teslim tarihi: 03/2025

Proje Alanı: 11.600 m²

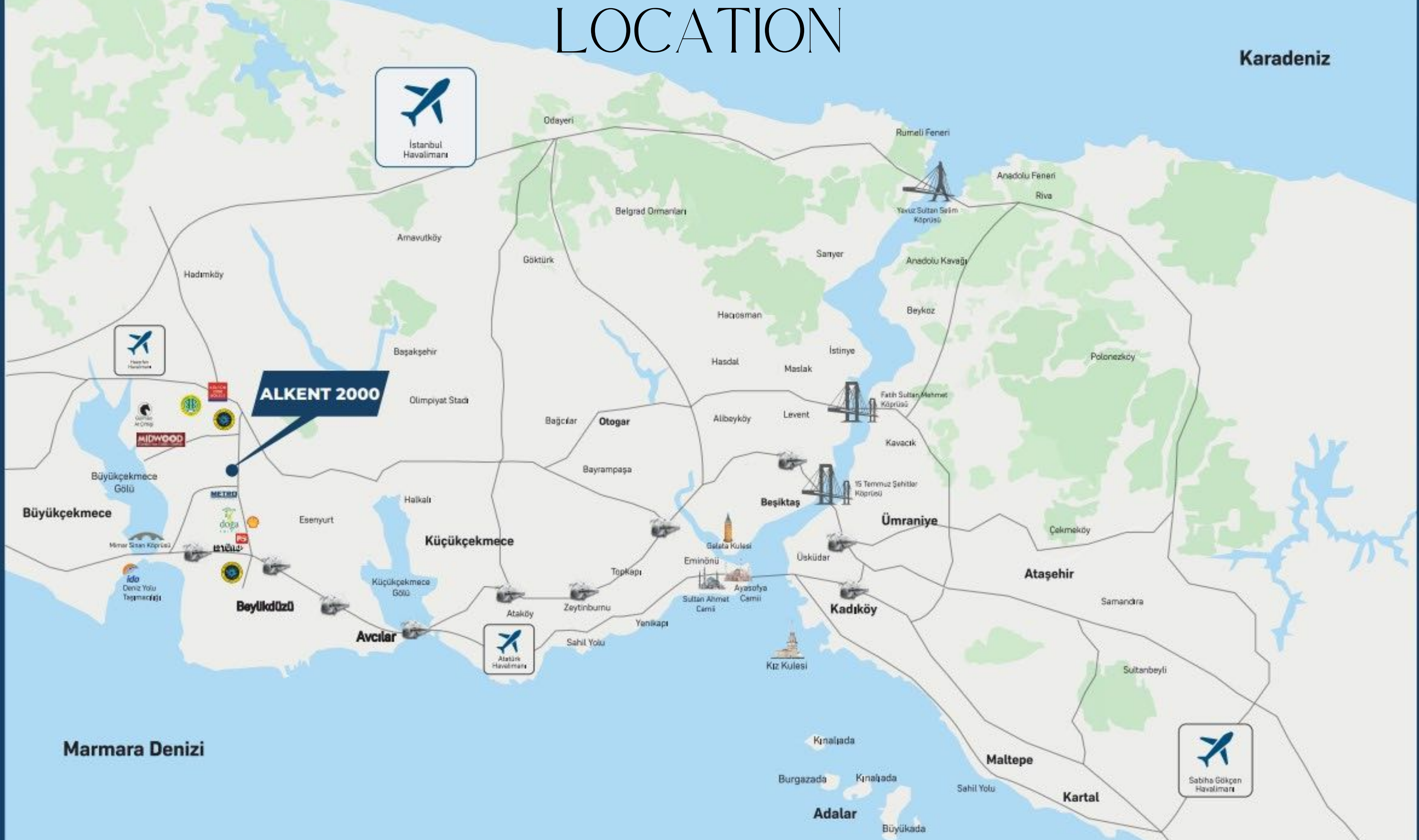
Peyzaj Alanı 8.000 m²

227 Apartments

19 commercial



LOCATION



E5 Highway 5 Km

Hazerfen Airport 5 Min.

TEM Highway 1 Km

Midwood Studios 5 Min.

Close to Privilege Life

Istanbul University 4 Km

Perla Vista AVM 5 Km

Brights Int. School 2 Km

Marmara Park AVM 10 Km

8.000 M²
LANDSCAPE



SAMPLE
APARTMENT

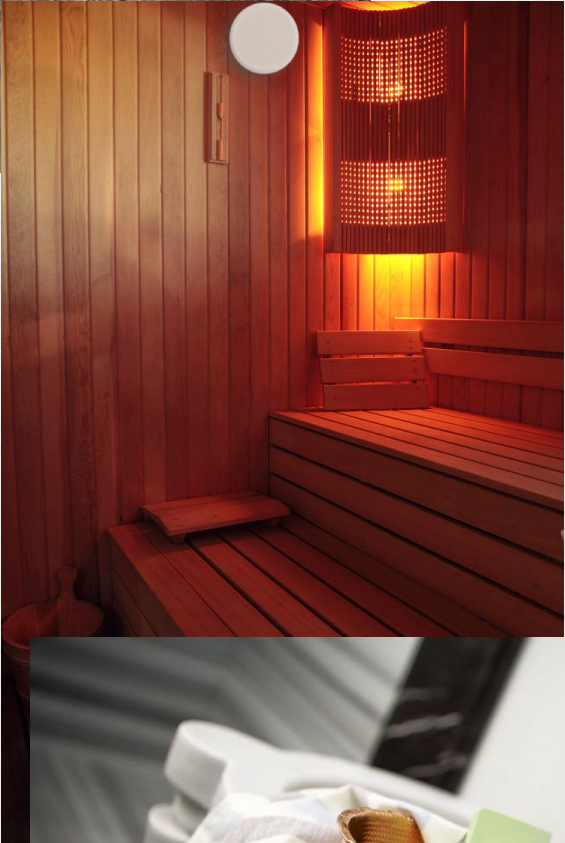
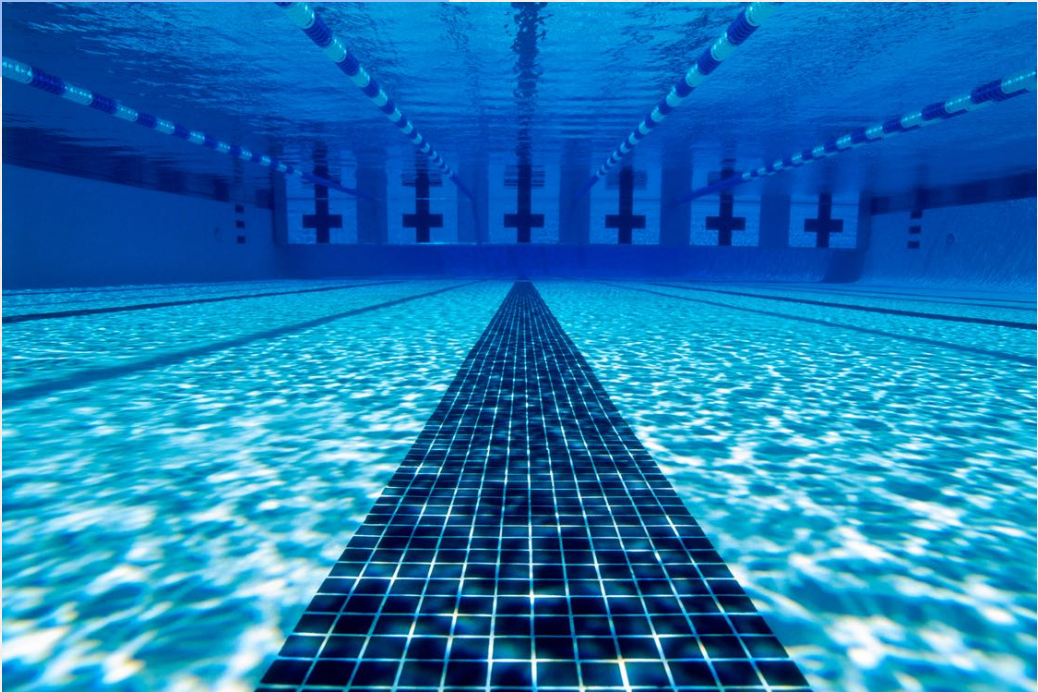








SOCIAL FACILITIES



SITUATION PLAN



FLOOR PLANS

202 ADA 9 PARSEL / A-B BLOK

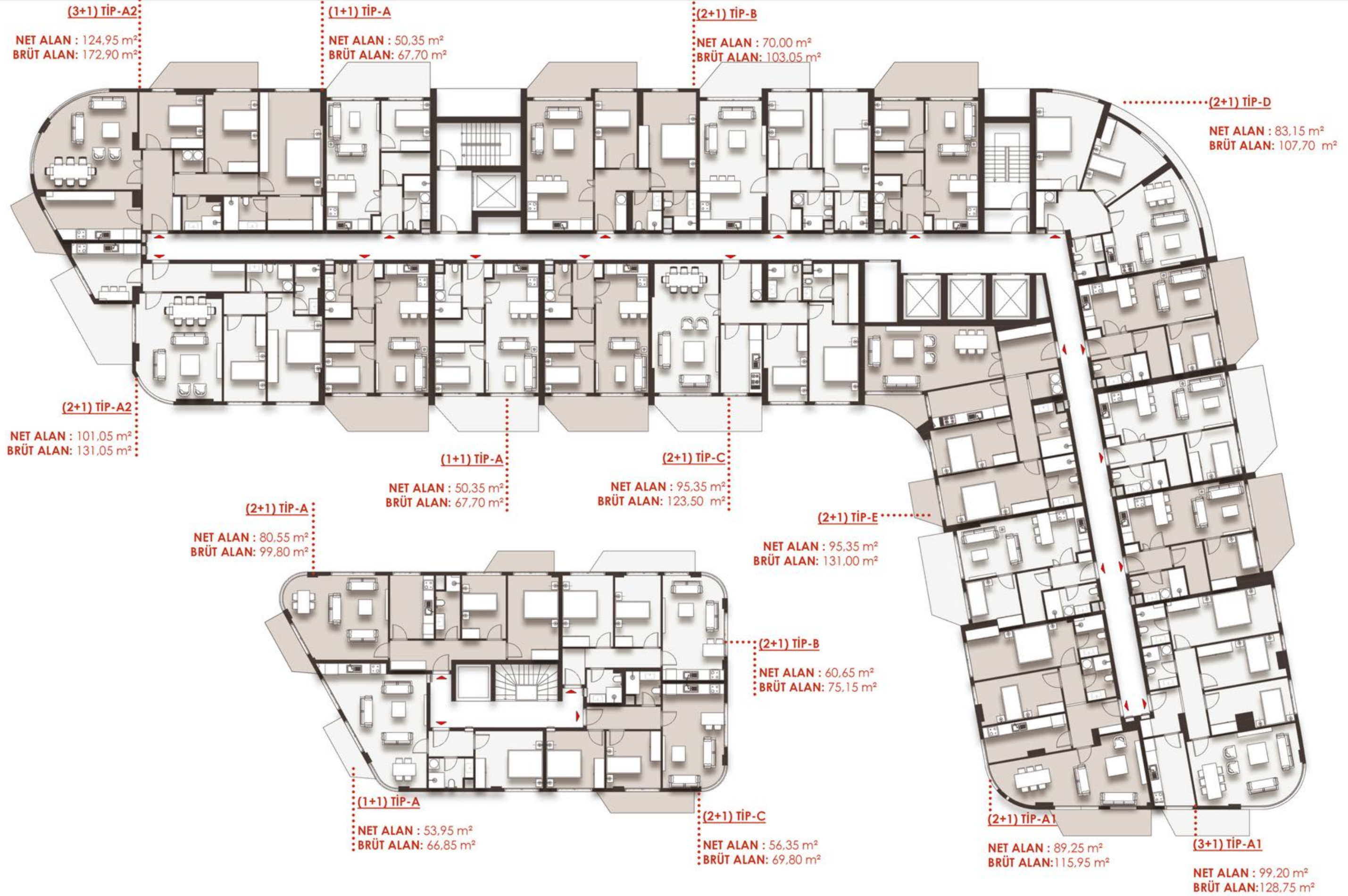


202 ADA 9 PARSEL / A-B BLOK



1. NORMAL KAT

202 ADA 9 PARSEL / A-B BLOK

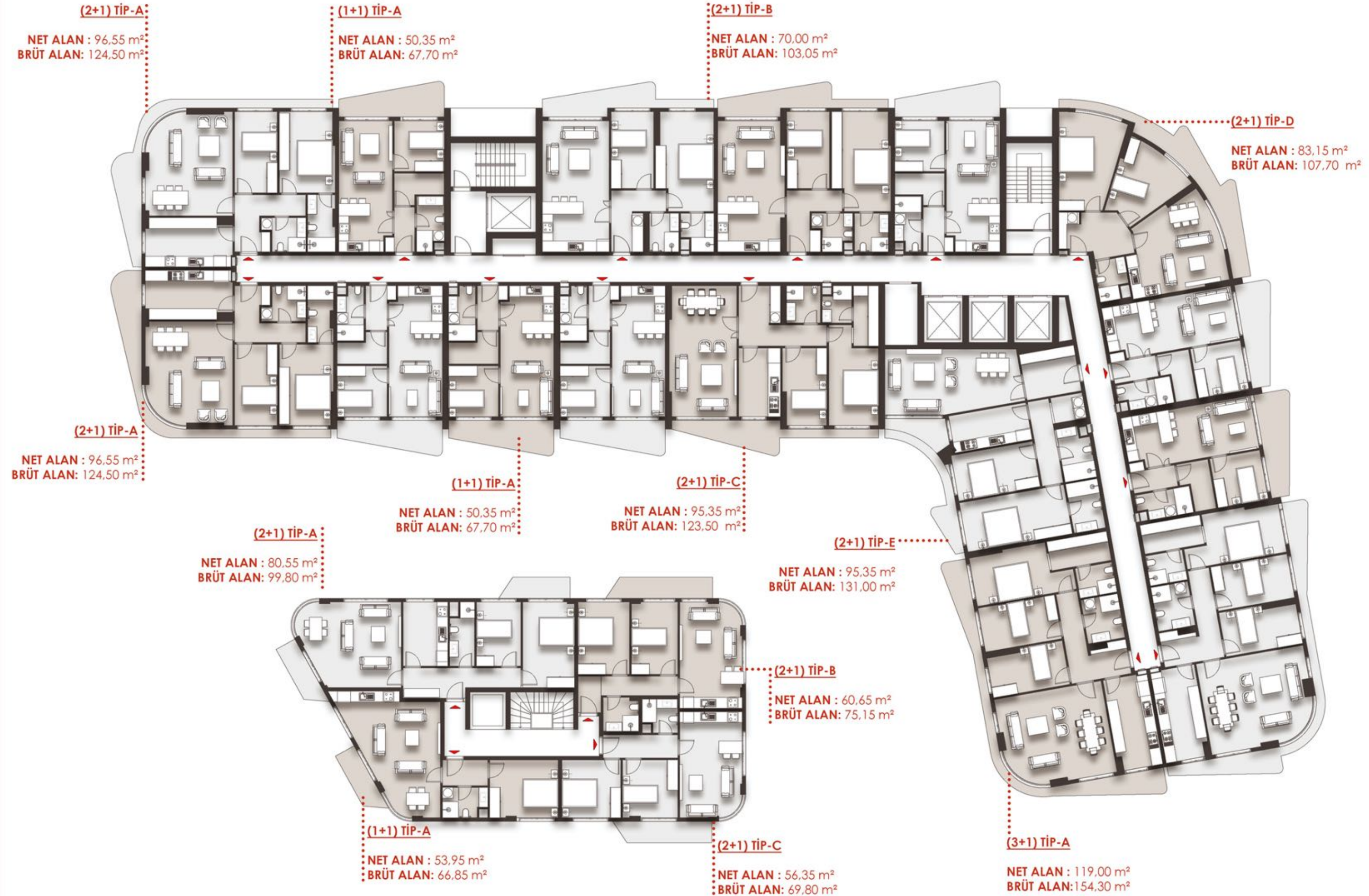


202 ADA 9 PARSEL / A BLOK



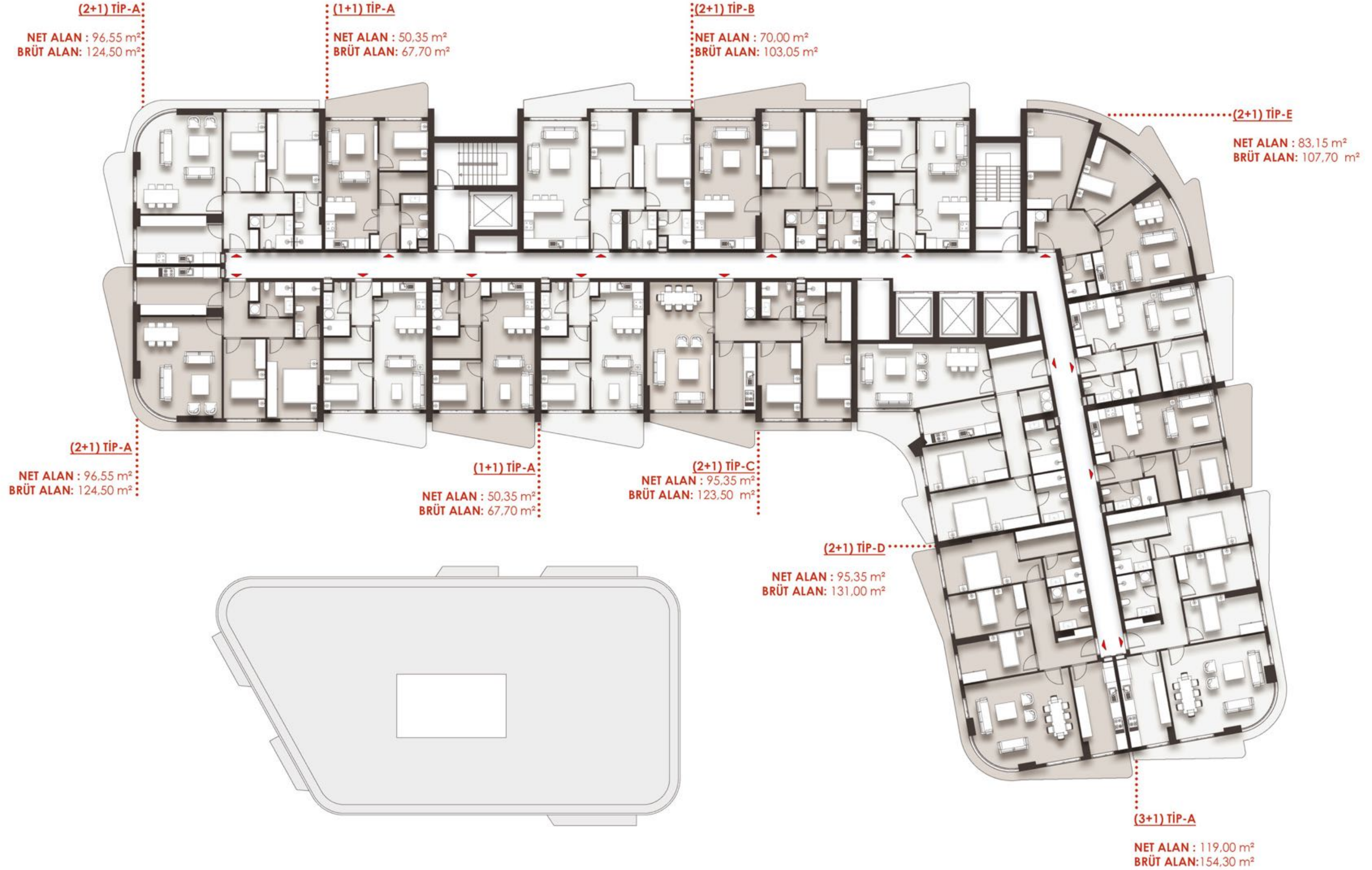
3. NORMAL KAT

202 ADA 9 PARSEL / A BLOK



4. NORMAL KAT

202 ADA 9 PARSEL / A BLOK



5...10. NORMAL KAT

202 ADA 9 PARSEL / A BLOK

(3+1) TİP-A TERASLI:
NET ALAN : 145,65 m²
BRÜT ALAN: 186,05 m²

(1+1) TİP-A
NET ALAN : 50,35 m²
BRÜT ALAN: 67,70 m²

(2+1) TİP-B
NET ALAN : 70,00 m²
BRÜT ALAN: 103,05 m²

(2+1) TİP-D
NET ALAN : 83,15 m²
BRÜT ALAN: 107,70 m²

(3+1) TİP-A TERASLI:
NET ALAN : 145,65 m²
BRÜT ALAN: 186,05 m²

(1+1) TİP-A:
NET ALAN : 50,35 m²
BRÜT ALAN: 67,70 m²

(2+1) TİP-C:
NET ALAN : 95,35 m²
BRÜT ALAN: 123,50 m²

(2+1) TİP-E
NET ALAN : 95,35 m²
BRÜT ALAN: 131,00 m²

(2+1) TİP-A TERASLI
NET ALAN : 112,70 m²
BRÜT ALAN: 139,40 m²

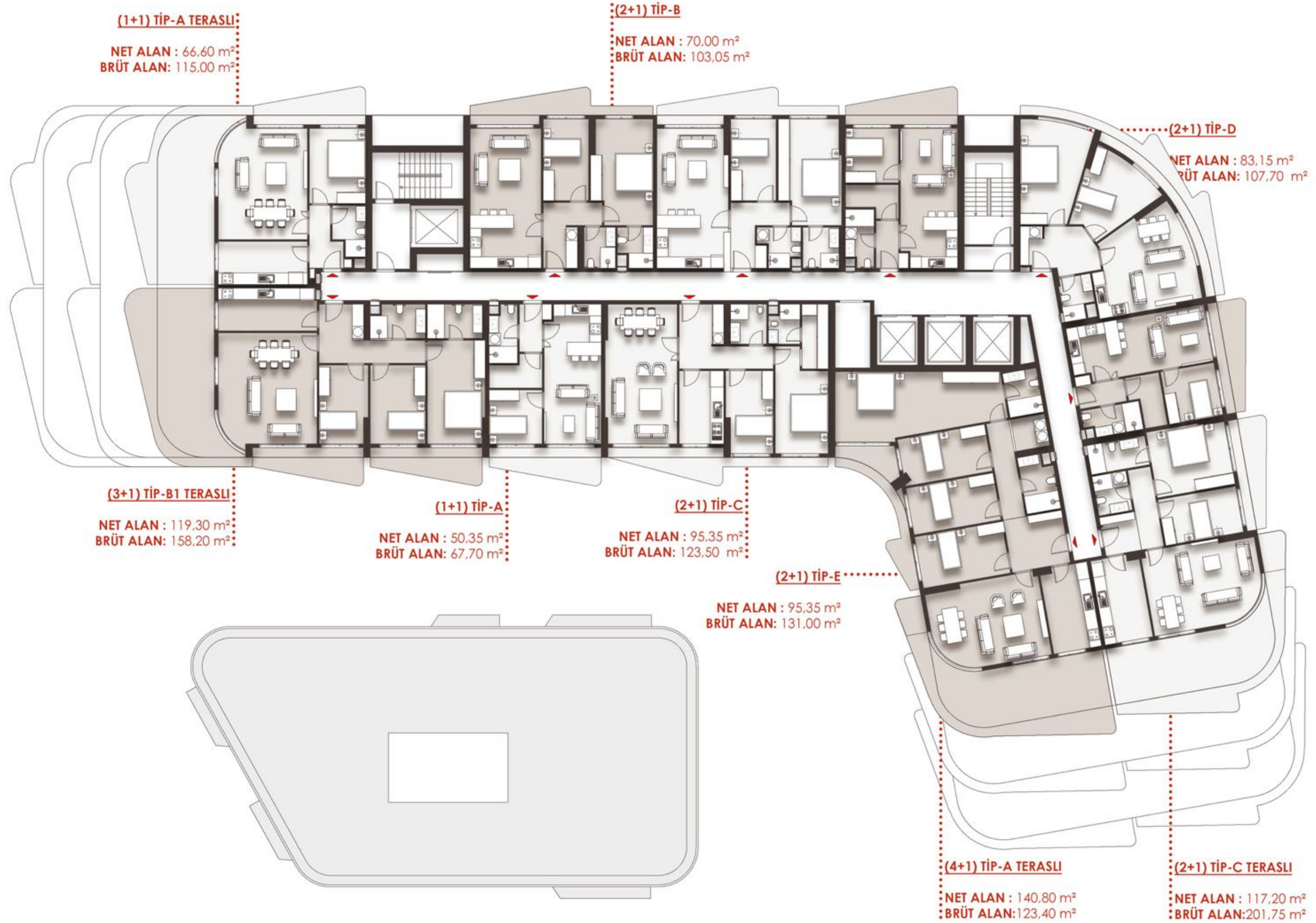


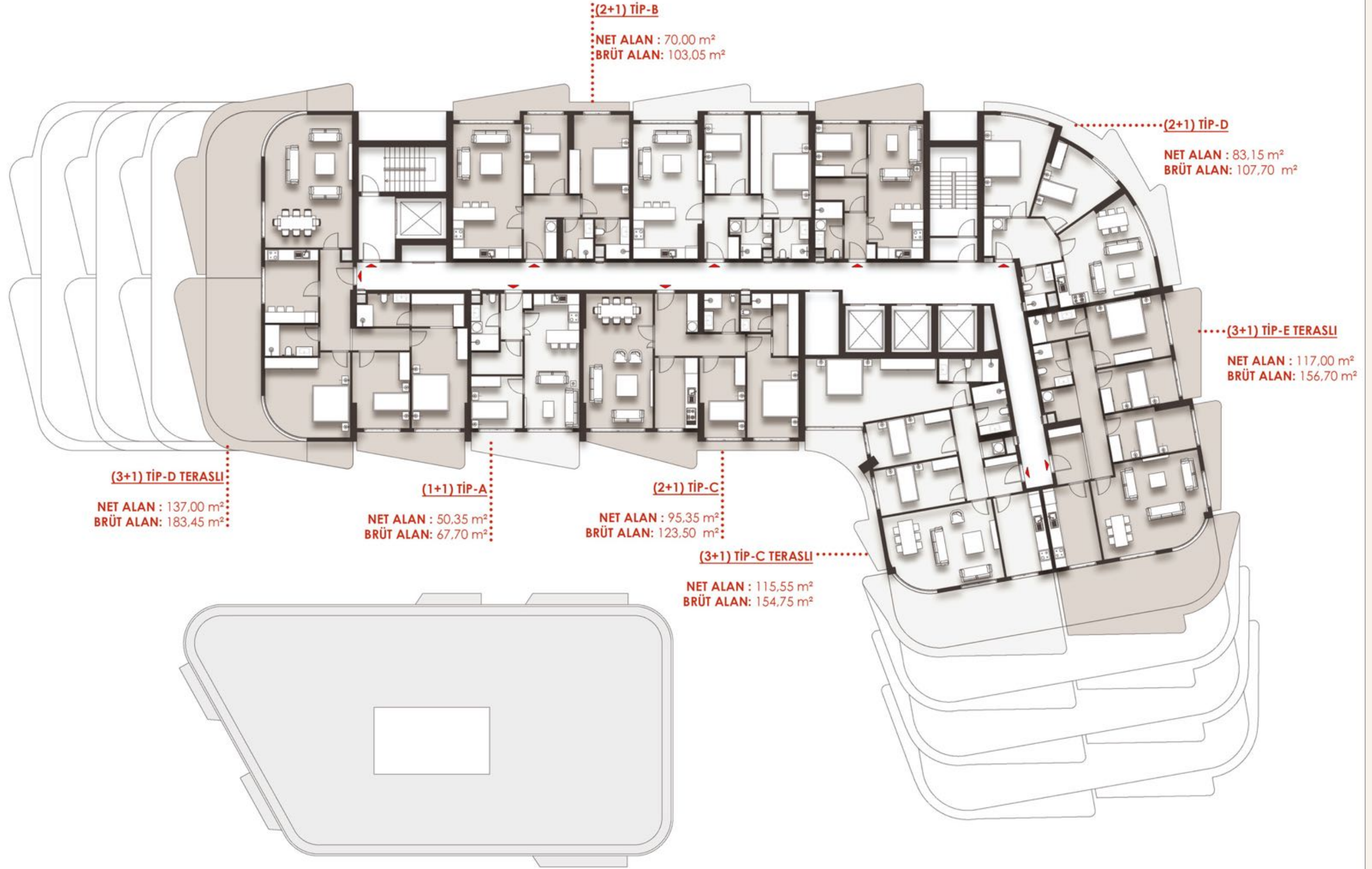
202 ADA 9 PARSEL / A BLOK



12. NORMAL KAT

202 ADA 9 PARSEL / A BLOK





APARTMENT
PLANS



TIP-A1 (2+1)

1 ANTRE	8,50 m ²
2 SALON	27,10 m ²
3 MUTFAK	9,85 m ²
4 YATAK ODASI	12,00 m ²
5 E.YATAK ODASI	16,00 m ²
6 E. BANYO	3,70 m ²
7 BANYO	4,00 m ²
8 BALKON	8,10 m ²

NET ALAN : 89,25 m²

BRÜT ALAN : 115,95 m²

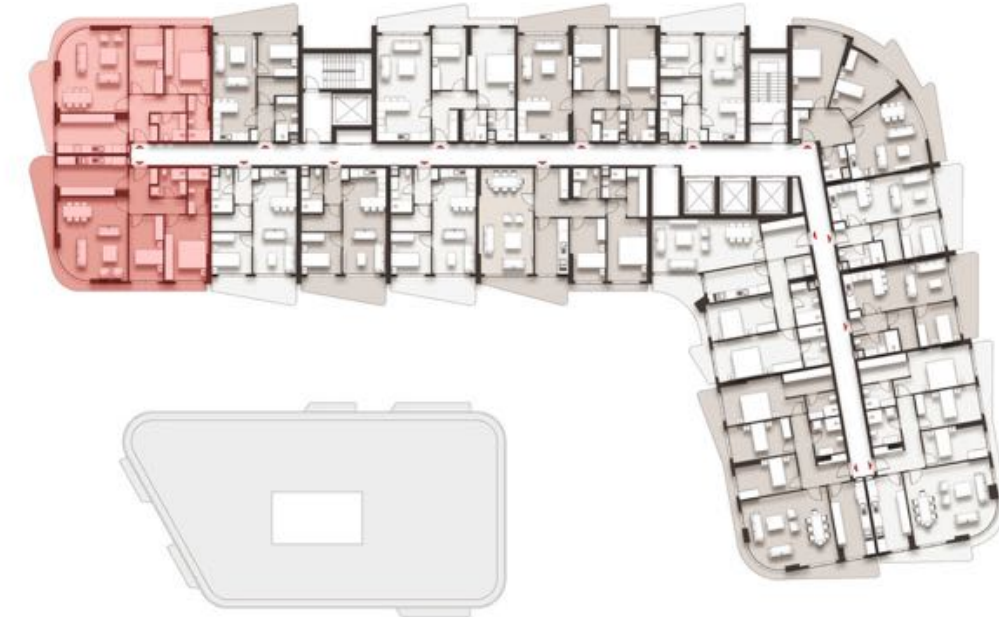


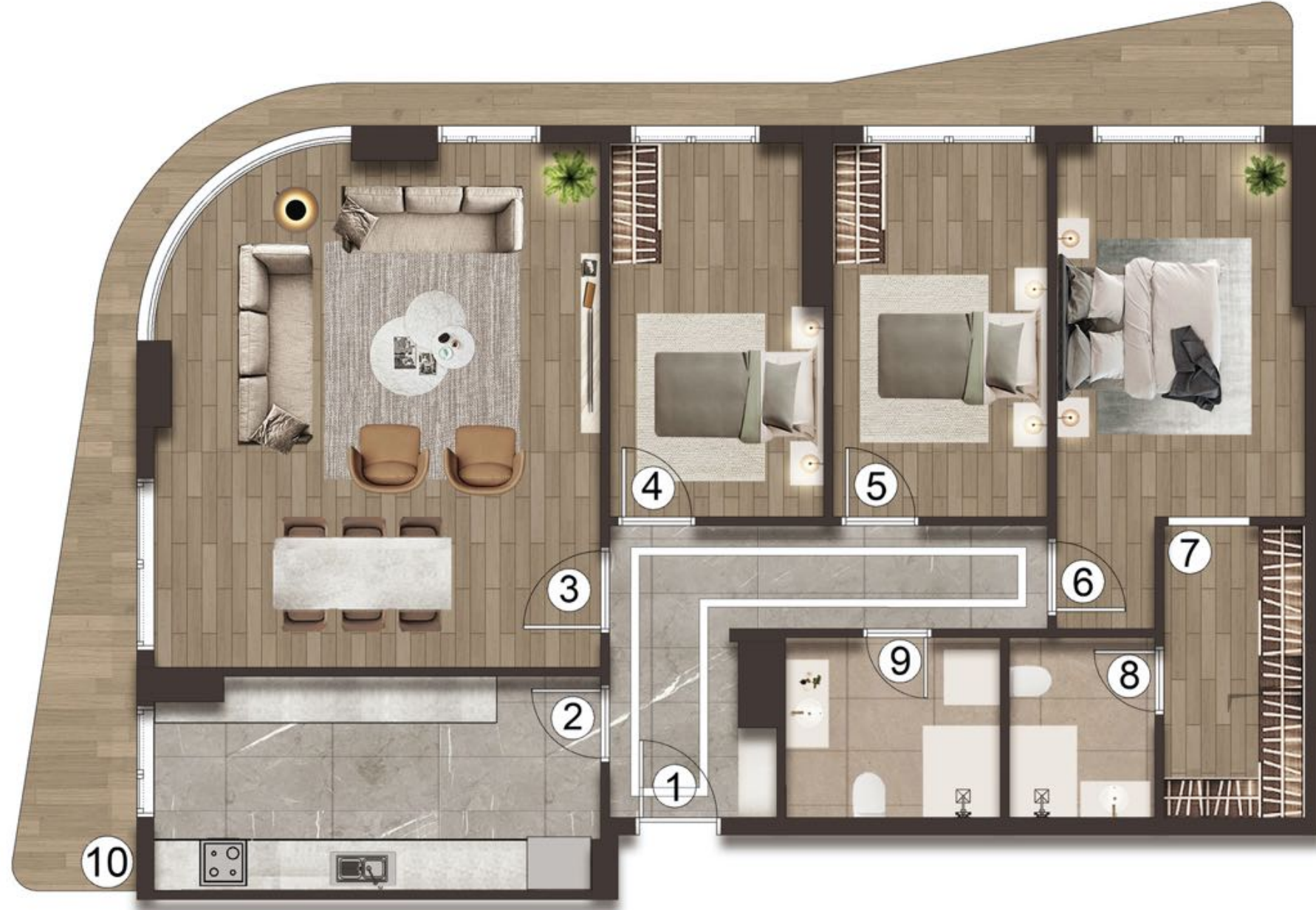


TIP-A (2+1)

1 ANTRE	8,25 m ²
2 MUTFAK	13,05 m ²
3 SALON	26,95 m ²
4 YATAK ODASI (M.K.A)	10,90 m ²
5 E. YATAK ODASI	14,05 m ²
6 E. BANYO	4,80 m ²
7 BANYO	4,05 m ²
8 BALKON	8,40 m ²

NET ALAN : 90,45 m²
BRÜT ALAN : 124,50 m²

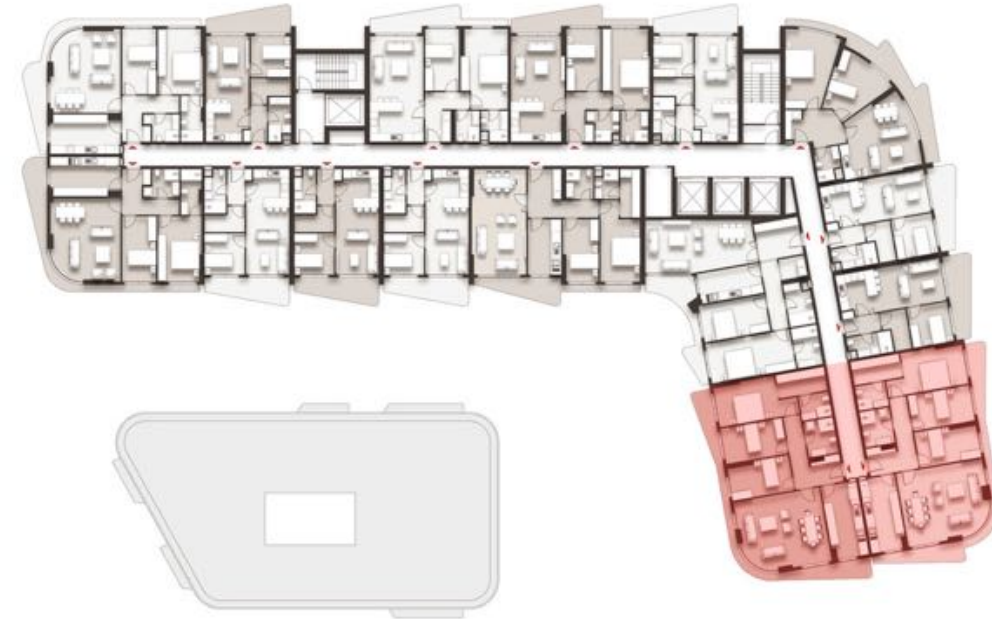




TIP-A (3+1)

1 ANTRE+HOL	9,90 m ²
2 MUTFAK	12,70 m ²
3 SALON	30,20 m ²
4 YATAK ODASI	10,40 m ²
5 YATAK ODASI	10,90 m ²
6 E.YATAK ODASI	13,80 m ²
7 GİYİNME ODASI	5,60 m ²
8 E. BANYO	3,60 m ²
9 BANYO	5,25 m ²
10 BALKON	16,65 m ²

NET ALAN : 119,00 m²
BRÜT ALAN : 154,30 m²

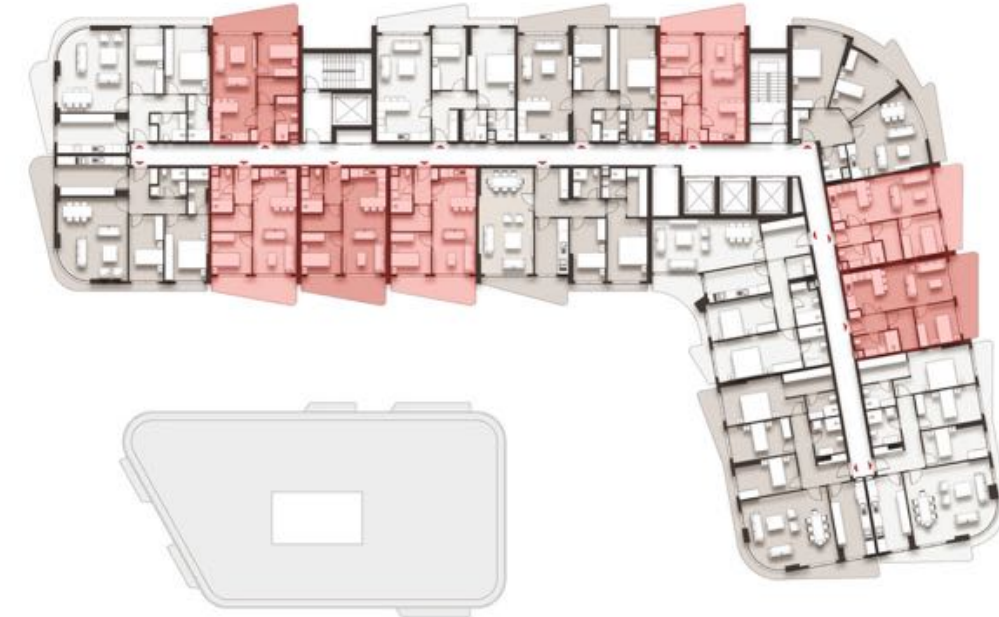




TİP-A (1+1)

1 ANTRE	3,30 m ²
2 SALON+MUTFAK	21,60 m ²
3 SANDIK ODASI	4,05 m ²
4 BANYO	4,40 m ²
5 YATAK ODASI	8,00 m ²
6 BALKON	9,00 m ²

NET ALAN : 50,35 m²
BRÜT ALAN : 67,70 m²

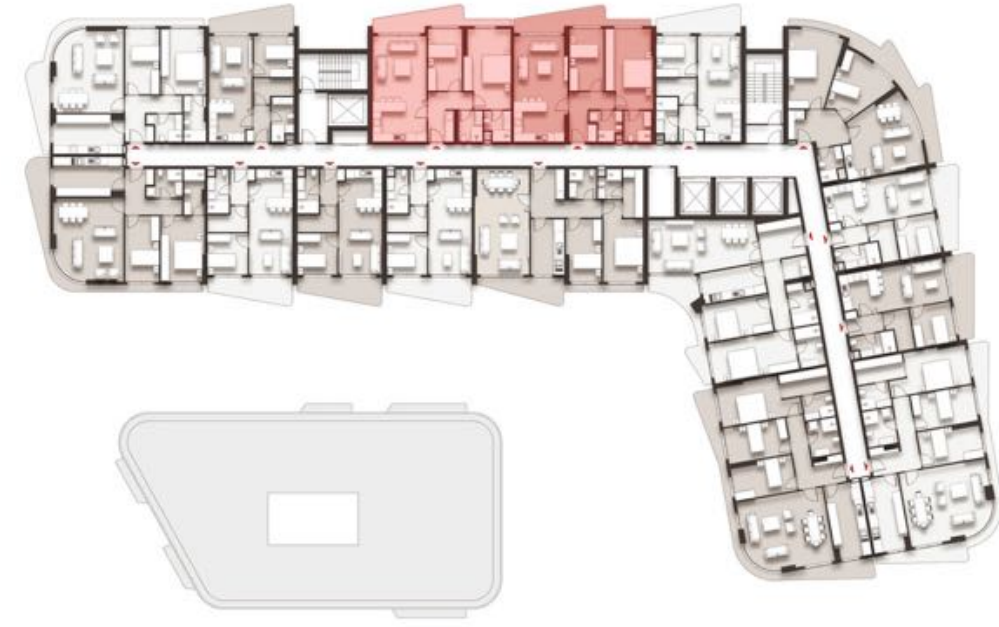




TİP-B (2+1)

1 ANTRE	7,40 m ²
2 SALON+MUTFAK	26,90 m ²
3 YATAK ODASI	10,30 m ²
4 E.YATAK ODASI	17,50m ²
5 E.BANYO	4,10 m ²
6 BANYO	3,80 m ²
7 BALKON	9,80 m ²

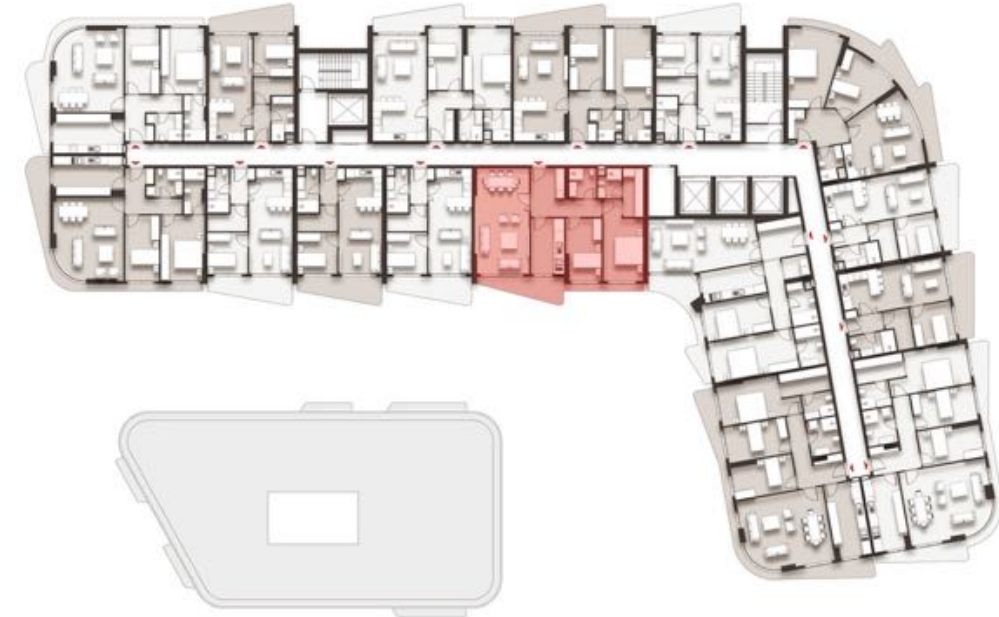
NET ALAN : 79,80 m²
BRÜT ALAN :103,50 m²





TIP-C (2+1)

1 ANTRE	11,10 m ²
2 SALON	27,95 m ²
3 MUTFAK	9,05 m ²
4 YATAK ODASI	10,90 m ²
5 E.YATAK ODASI	13,90 m ²
6 GİYİNME ODASI	4,75 m ²
7 E.BANYO	3,10 m ²
8 BANYO	4,00 m ²
9 BALKON	10,60 m ²
NET ALAN	: 95,35 m²
BRÜT ALAN	: 124,40 m²

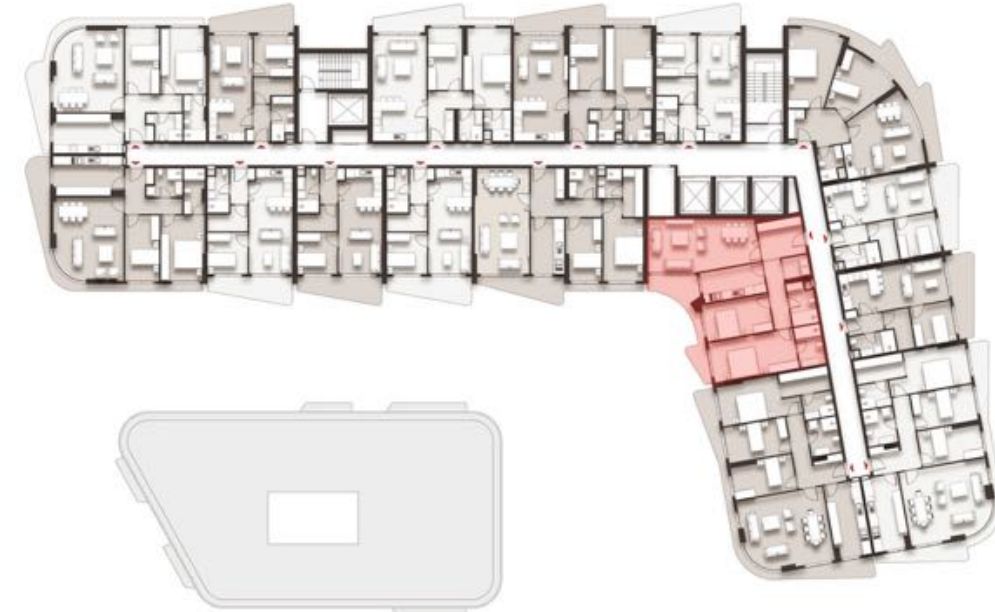




TİP-E (2+1)

1 ANTRE	8,05 m ²
2 SALON+MUTFAK	26,65 m ²
3 MUTFAK	9,25 m ²
4 YATAK ODASI	12,10 m ²
5 E.YATAK ODASI	16,65 m ²
6 E.BANYO	5,05 m ²
7 BANYO	5,00 m ²
8 ÇAMAŞIR O.	2,60 m ²
9 BALKON	10,00 m ²

NET ALAN : 95,35 m²
BRÜT ALAN :129,05 m²

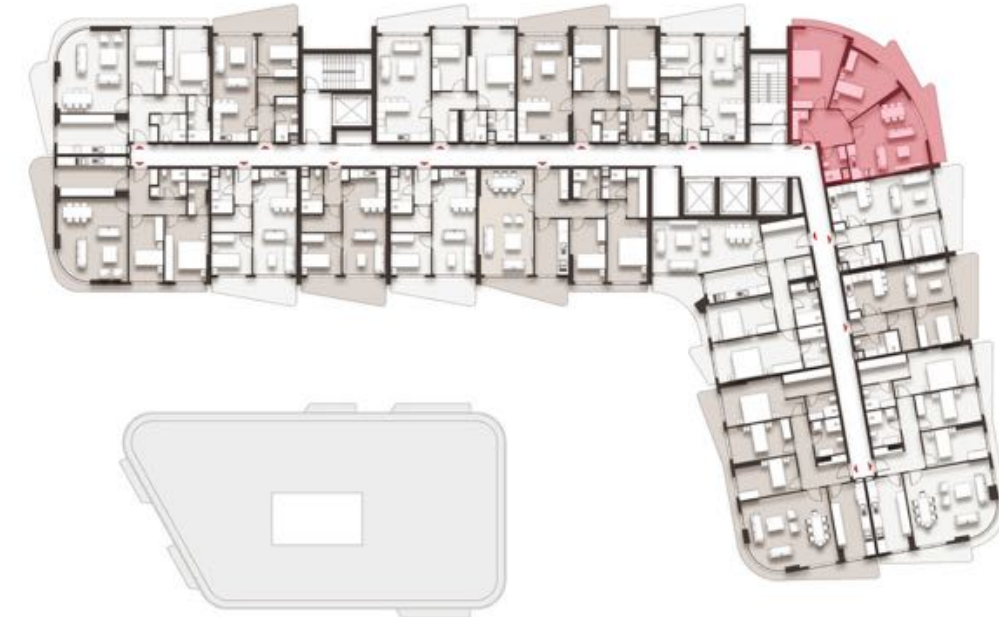




TİP-D (2+1)

1 ANTRE	9,10 m ²
2 BANYO	3,55 m ²
3 MUTFAK+SALON	23,95 m ²
4 YATAK ODASI	13,20 m ²
5 E.YATAK ODASI	17,30 m ²
6 BALKON	16,05 m ²

NET ALAN : 83,15 m²
BRÜT ALAN : 107,70 m²





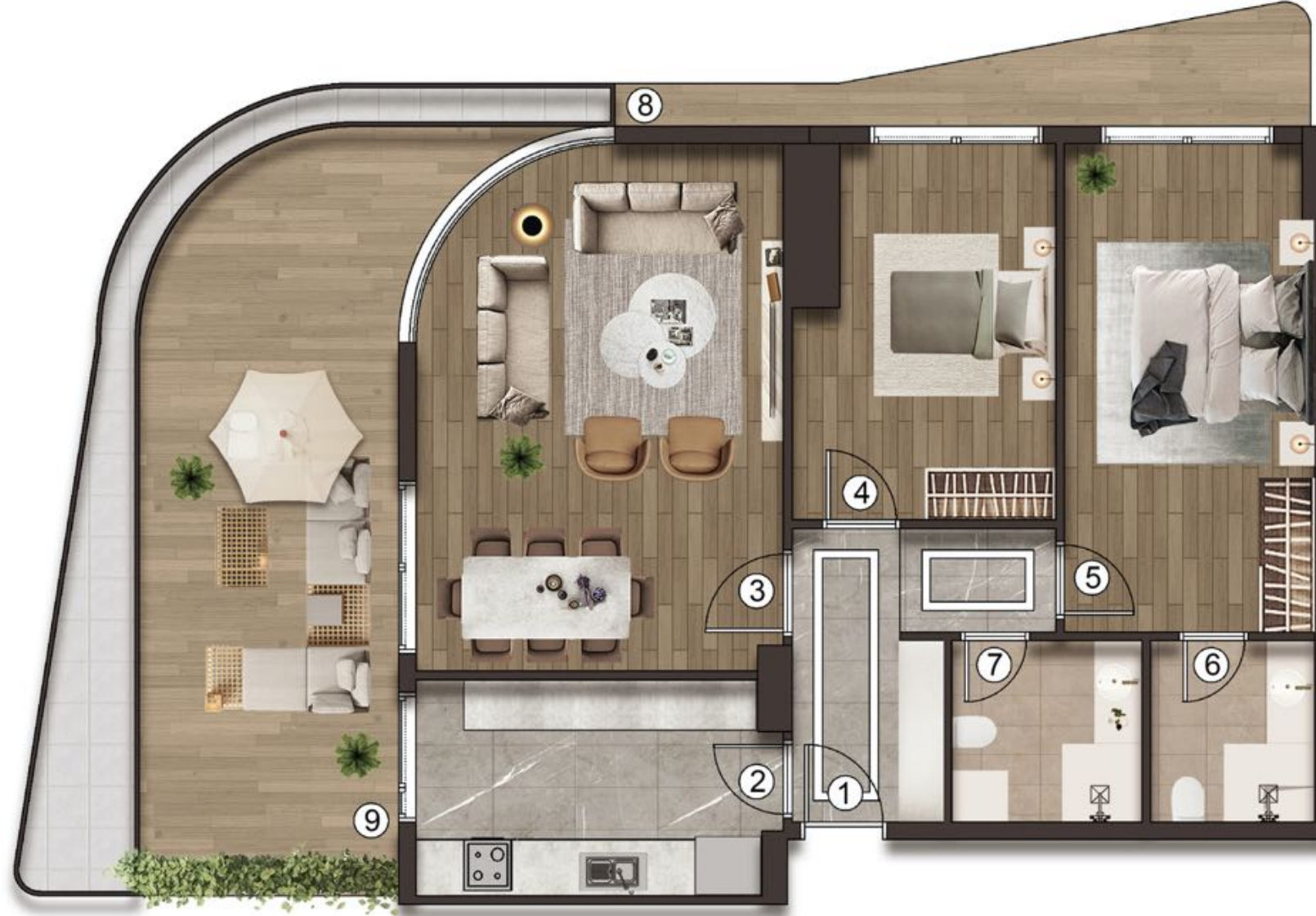
TİP-A (3+1) TERASLI

1 ANTRE	6,35 m ²
2 MUTFAK	11,75 m ²
3 SALON	27,10 m ²
4 YATAK ODASI	10,50 m ²
5 YATAK ODASI	10,40 m ²
6 E.YATAK ODASI	12,60 m ²
7 GİYİNME ODASI	5,00 m ²
8 E. BANYO	5,05 m ²
9 BANYO	4,40 m ²
10 ÇAM. ODASI	2,60 m ²
11 TERAS	40,90 m ²
12 BALKON	9,00 m ²

NET ALAN : 145,65 m²

BRÜT ALAN : 186,05 m²



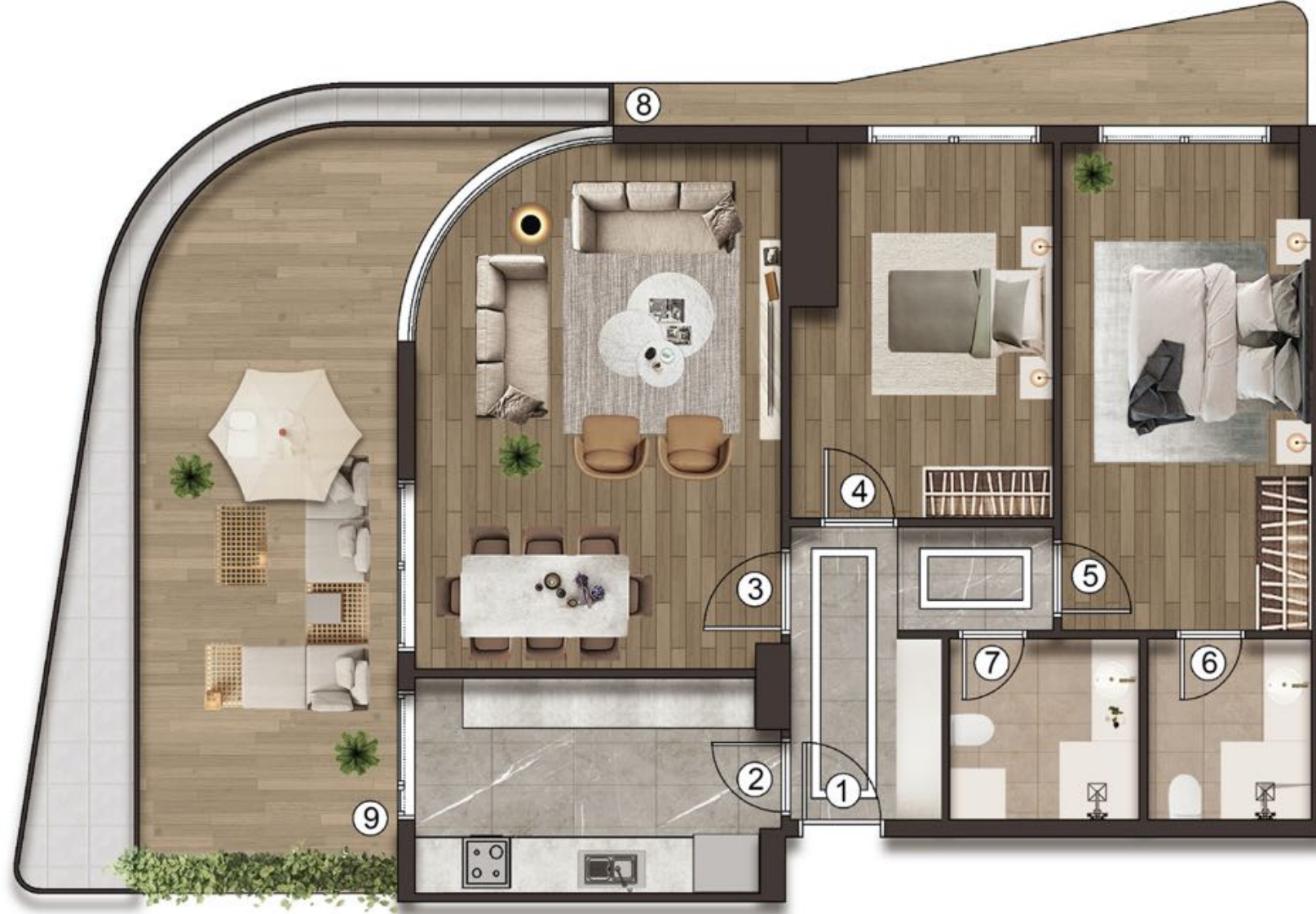


TİP-A (2+1) (TERASLI)

1 ANTRE+HOL	7,45 m ²
2 MUTFAK	10,25 m ²
3 SALON	24,70 m ²
4 YATAK ODASI	12,20 m ²
5 E.YATAK ODASI	16,10 m ²
6 E.BANYO	4,00 m ²
7 BANYO	4,60 m ²
8 BALKON	6,70 m ²
9 TERAS	26,70 m ²

NET ALAN : 112,70 m²
BRÜT ALAN : 139,40 m²



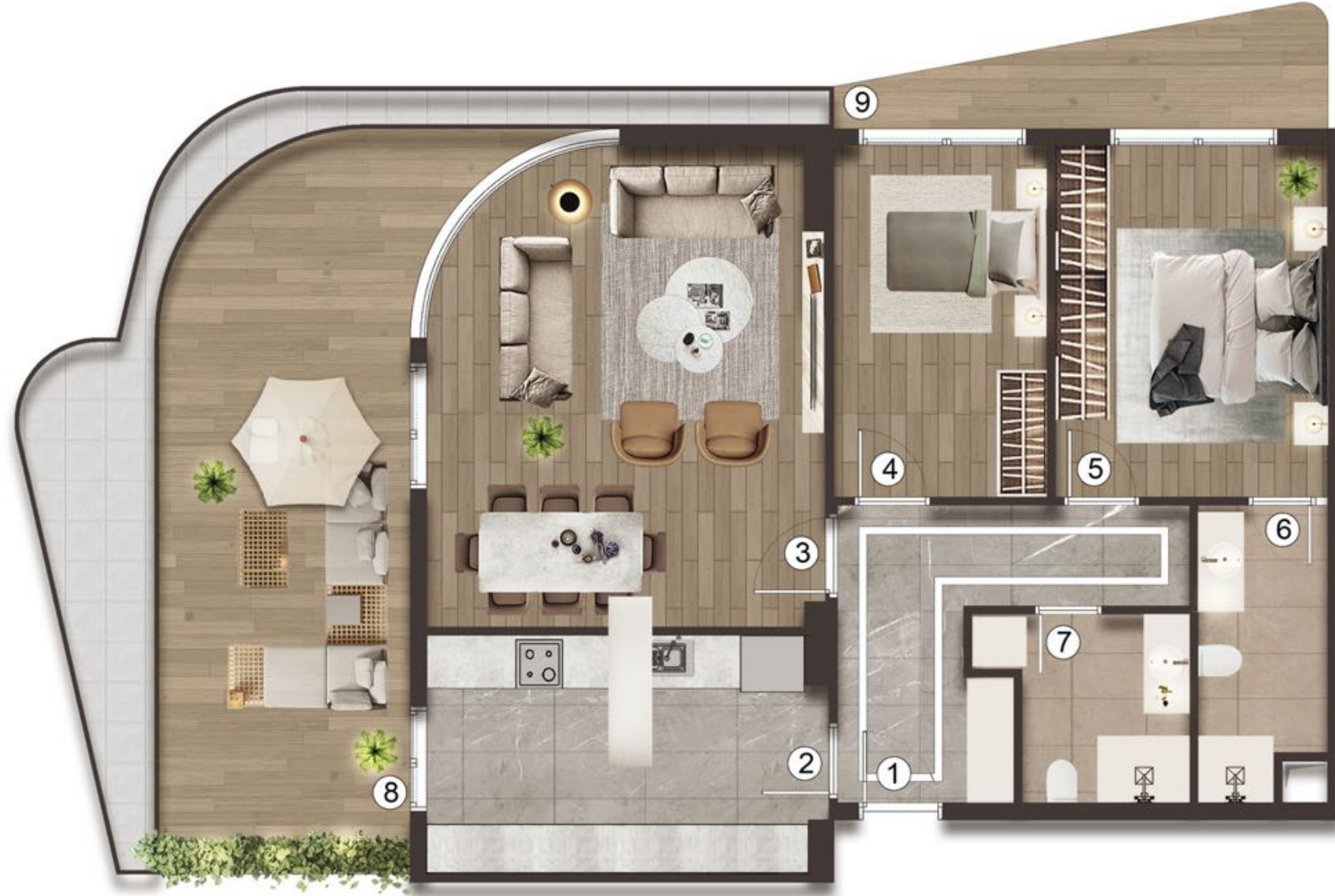


TİP-A (2+1) (TERASLI)

1 ANTRE+HOL	7,45 m ²
2 MUTFAK	10,25 m ²
3 SALON	24,70 m ²
4 YATAK ODASI	12,20 m ²
5 E.YATAK ODASI	16,10 m ²
6 E.BANYO	4,00 m ²
7 BANYO	4,60 m ²
8 BALKON	6,70 m ²
9 TERAS	26,70 m ²

NET ALAN : 112,70 m²
BRÜT ALAN : 139,40 m²





TİP-B (2+1) (TERASLI)

1 ANTRE+HOL	9,45 m ²
2 MUTFAK	13,35 m ²
3 SALON	25,65 m ²
4 YATAK ODASI	10,70 m ²
5 E.YATAK ODASI	13,65 m ²
6 E.BANYO	5,10 m ²
7 BANYO	4,90 m ²
8 TERAS	26,70 m ²
9 BALKON	6,05 m ²

NET ALAN : 115,55 m²
BRÜT ALAN : 160,05 m²



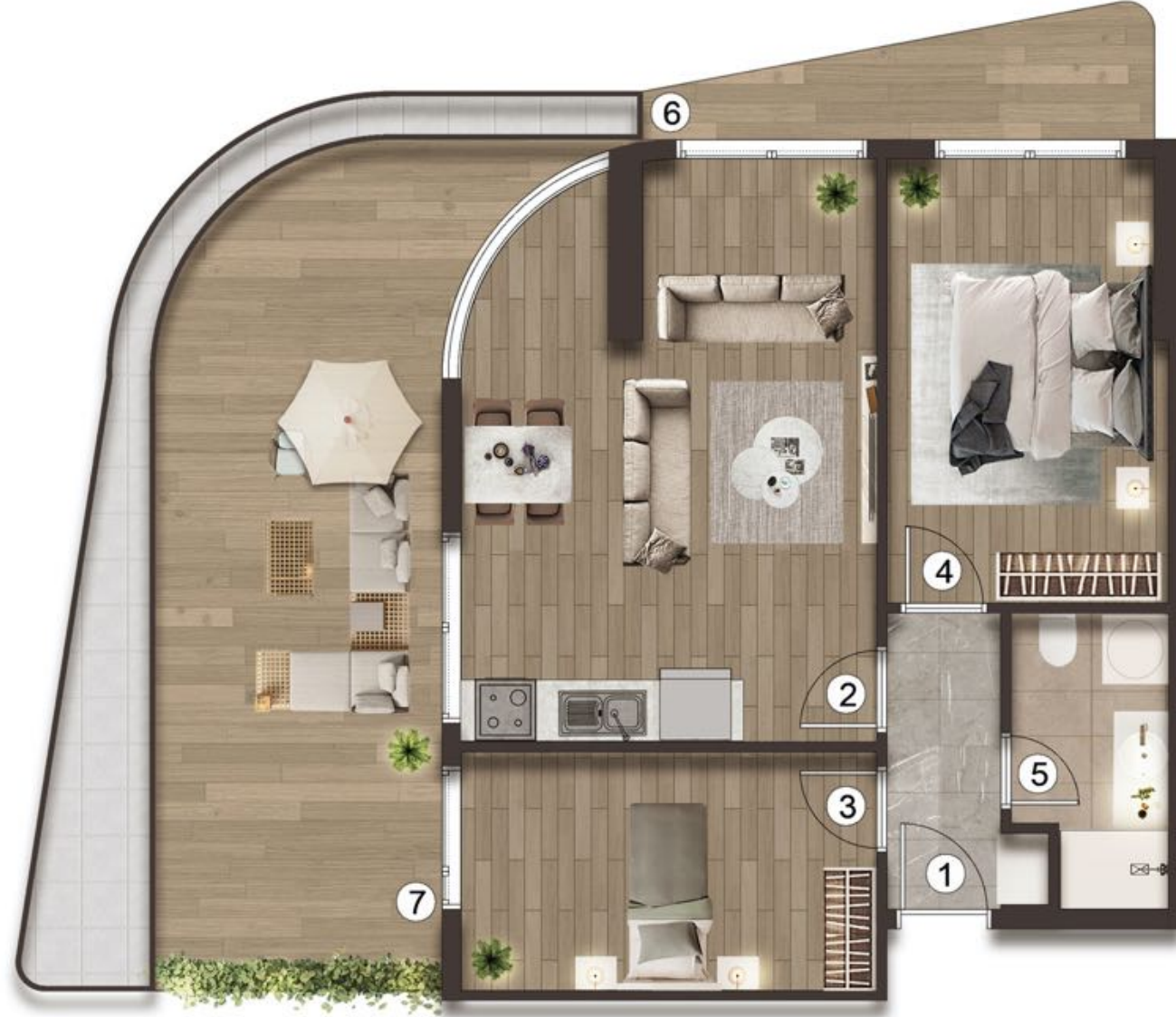


TİP-B (3+1) (TERASLI)

1 ANTRE+HOL	10,50 m ²
2 MUTFAK	10,90 m ²
3 SALON	24,80 m ²
4 YATAK ODASI	12,60 m ²
5 YATAK ODASI	10,45 m ²
6 E.YATAK ODASI	16,56 m ²
7 GİYİNME ODASI	4,35 m ²
8 E. BANYO	4,10 m ²
9 BANYO	3,85 m ²
10 ÇAM. ODASI	2,15 m ²
11 BALKON	9,00 m ²
12 BALKON	5,35 m ²
13 TERAS	26,70 m ²

NET ALAN : 114,50 m²
BRÜT ALAN : 177,90 m²



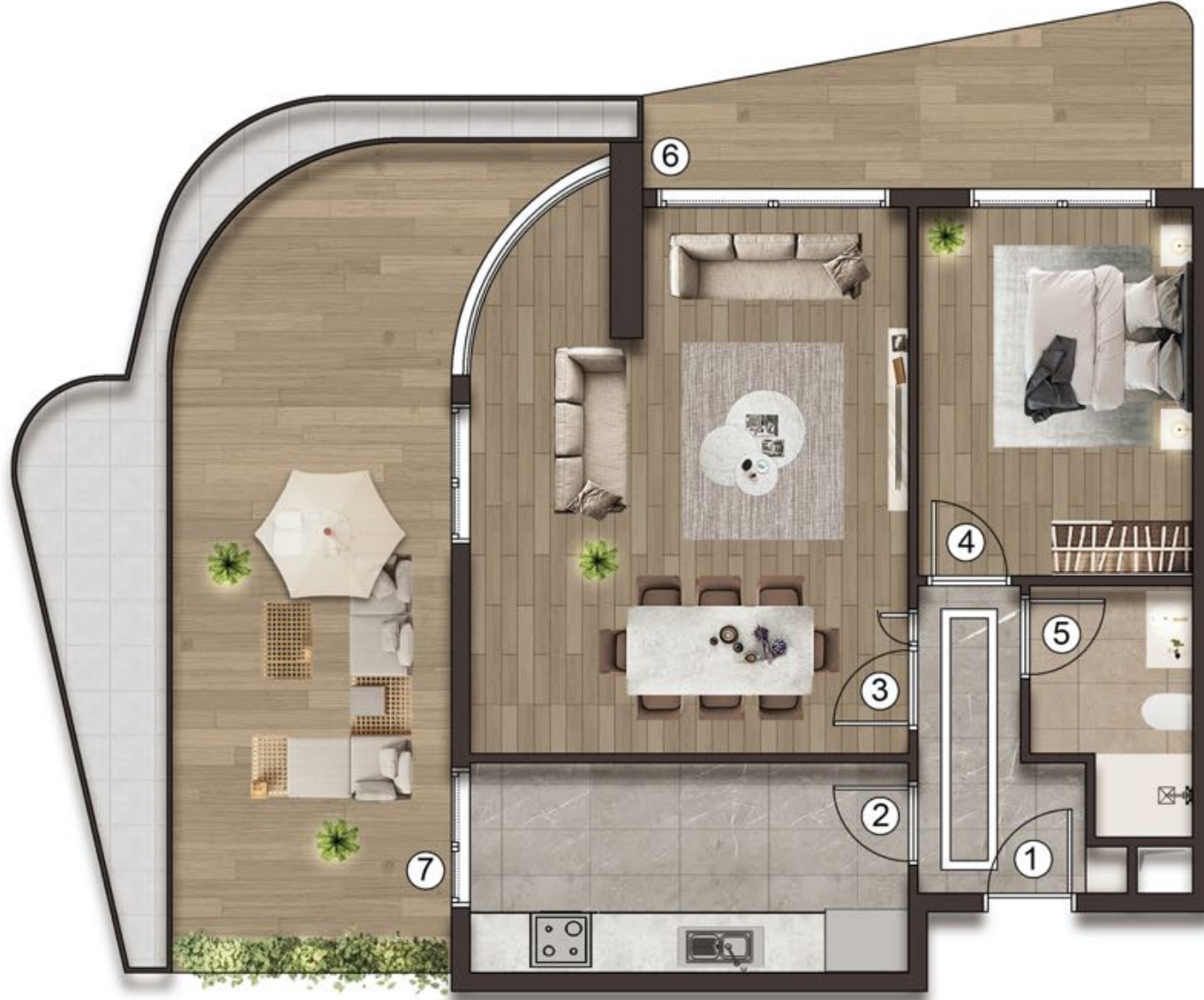


TIP-C (2+1) (TERASLI)

1 ANTRE	3,30 m ²
2 SALON+MUTFAK	21,60 m ²
3 SANDIK ODASI	4,05 m ²
4 BANYO	4,40 m ²
5 YATAK ODASI	8,00 m ²
6 BALKON	5,30 m ²
7 TERAS	26,70 m ²

NET ALAN : 63,20 m²
BRÜT ALAN : 110,10 m²

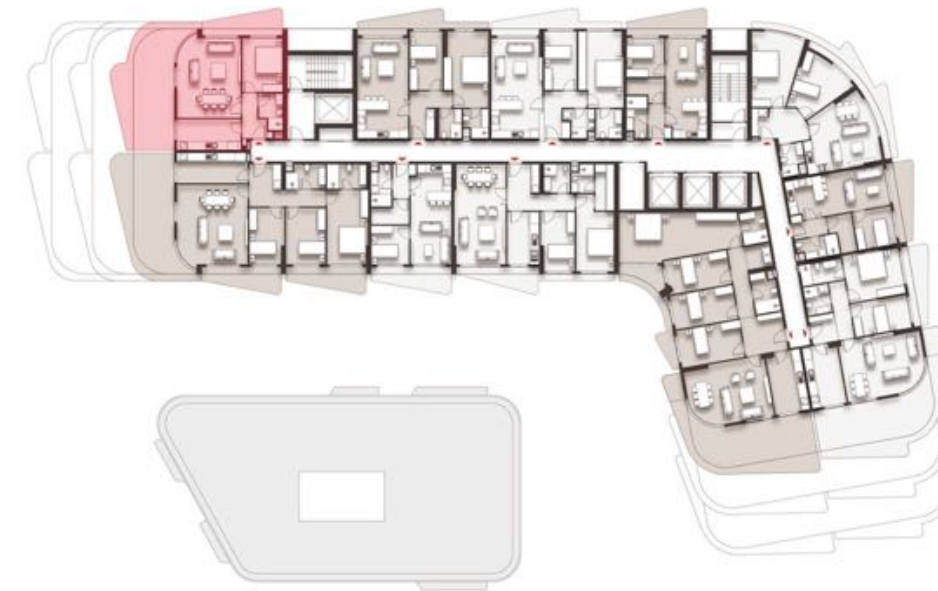




TİP-A (1+1) (TERASLI)

1 ANTRE	4,60 m ²
2 MUTFAK	10,60 m ²
3 SALON	26,65 m ²
4 E.YATAK ODASI	11,65 m ²
5 BANYO	4,10 m ²
6 BALKON	9,00 m ²
7 TERAS	26,70 m ²

NET ALAN : 66,60 m²
BRÜT ALAN : 115,00 m²





TIP-B1 (3+1) (TERASLI)

1 ANTRE	11,15 m ²
2 MUTFAK	11,65 m ²
3 SALON	29,65 m ²
4 YATAK ODASI	10,45 m ²
5 YATAK ODASI	12,05 m ²
6 E.YATAK ODASI	16,40 m ²
7 E. BANYO	5,25 m ²
8 BANYO	4,85 m ²
9 BALKON	9,00 m ²
10 BALKON	8,95 m ²
11 TERAS	26,70 m ²

NET ALAN : 119,30 m²

BRÜT ALAN : 158,20 m²

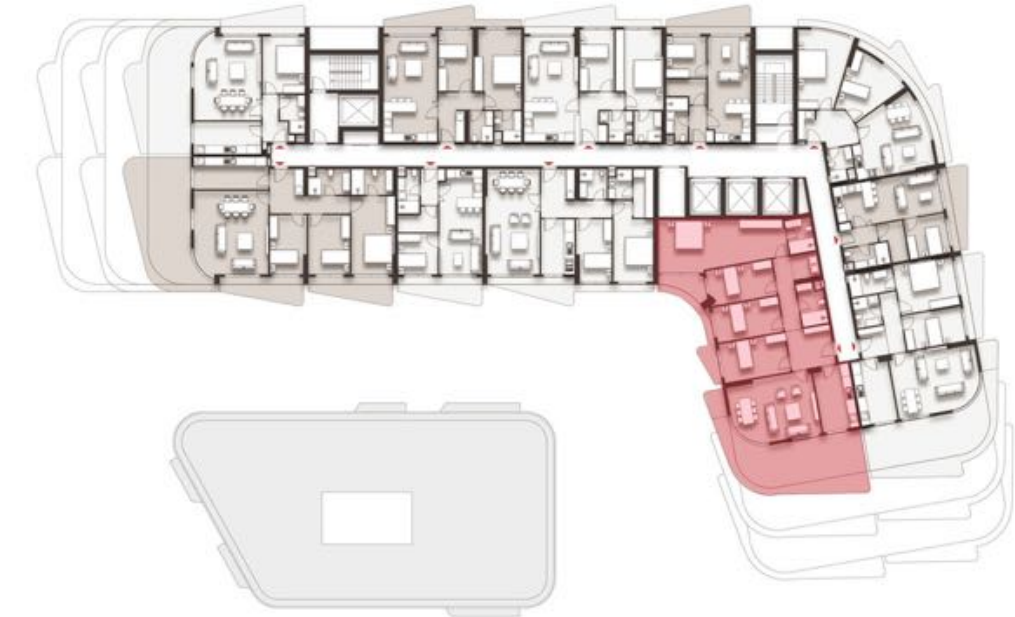


TİP-A 4+1 (TERASLI)

1 ANTRE	6,35 m ²
2 MUTFAK	11,30 m ²
3 SALON	25,55 m ²
4 YATAK ODASI	12,80 m ²
5 YATAK ODASI	11,65 m ²
6 YATAK ODASI	11,65 m ²
7 E.YATAK ODASI	28,80 m ²
8 E. BANYO	4,25m ²
9 ÇAM. ODASI	3,05 m ²
10 BANYO	5,00 m ²
11 BALKON	9,45 m ²
12 BALKON	2,55 m ²
13 TERAS	26,70m ²

NET ALAN : 140,80 m²

BRÜT ALAN : 213,40 m²





TİP-C (2+1) TERASLI

1 ANTRE+HOL	8,95 m ²
2 MUTFAK	11,25 m ²
3 SALON	25,55 m ²
4 YATAK ODASI	10,20 m ²
5 E.YATAK ODASI	14,30 m ²
6 E.BANYO	4,80 m ²
7 BANYO	3,80 m ²
8 BALKON	9,00 m ²
9 BALKON	2,65 m ²
10 TERAS	26,70 m ²

NET ALAN : 117,20 m²

BRÜT ALAN : 201,75m²

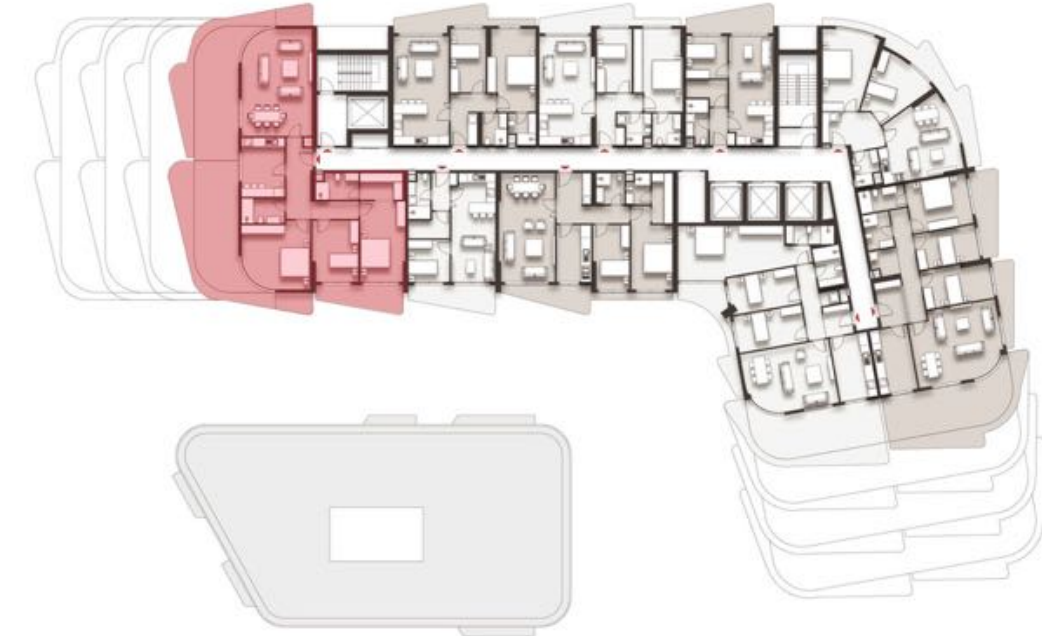




TİP-D (3+1) TERASLI

1 ANTRE	12,70 m ²
2 SALON	33,30 m ²
3 MUTFAK	11,60 m ²
4 BANYO	4,95 m ²
5 YATAK ODASI	19,60 m ²
6 YATAK ODASI	12,75 m ²
7 E.YATAK ODASI	16,40 m ²
8 GİYİNME ODASI	5,20 m ²
9 E. BANYO	4,85 m ²
10 BALKON	9,00 m ²
11 BALKON	3,30 m ²
12 BALKON	3,30 m ²
13 TERAS	26,70 m ²

NET ALAN : 137,00 m²
BRÜT ALAN : 183,45 m²



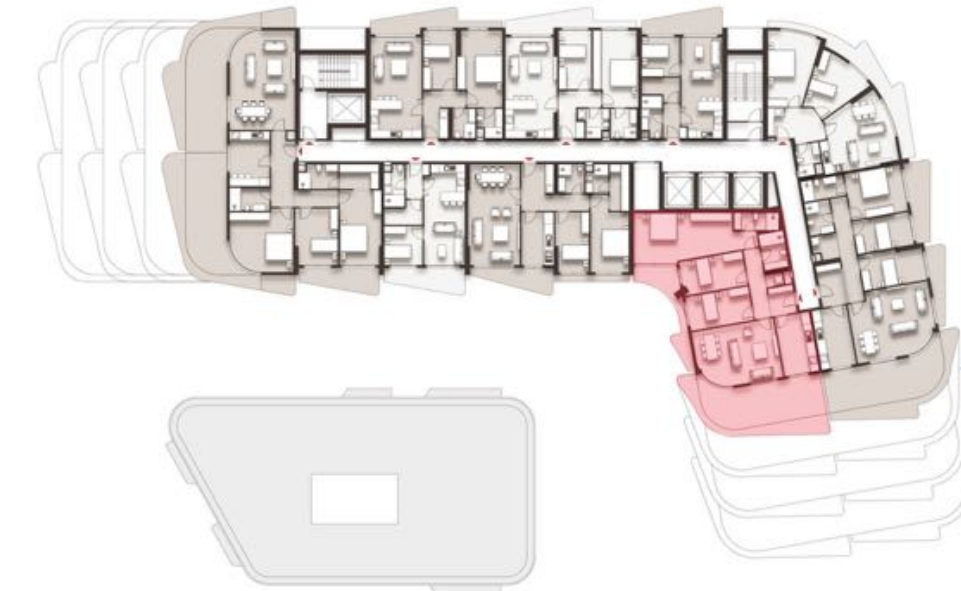


TİP-C (3+1) TERASLI

1 ANTRE+ HOL	10,00 m ²
2 MUTFAK	11,10 m ²
3 SALON	25,15 m ²
4 YATAK ODASI	11,65 m ²
5 YATAK ODASI	11,65 m ²
6 E.YATAK ODASI	26,65 m ²
7 E. BANYO	4,10 m ²
8 BANYO	4,75 m ²
9 ÇAM. ODASI	1,10 m ²
10 BALKON	9,55 m ²
11 TERAS	26,70 m ²

NET ALAN : 115,55 m²

BRÜT ALAN : 154,75 m²

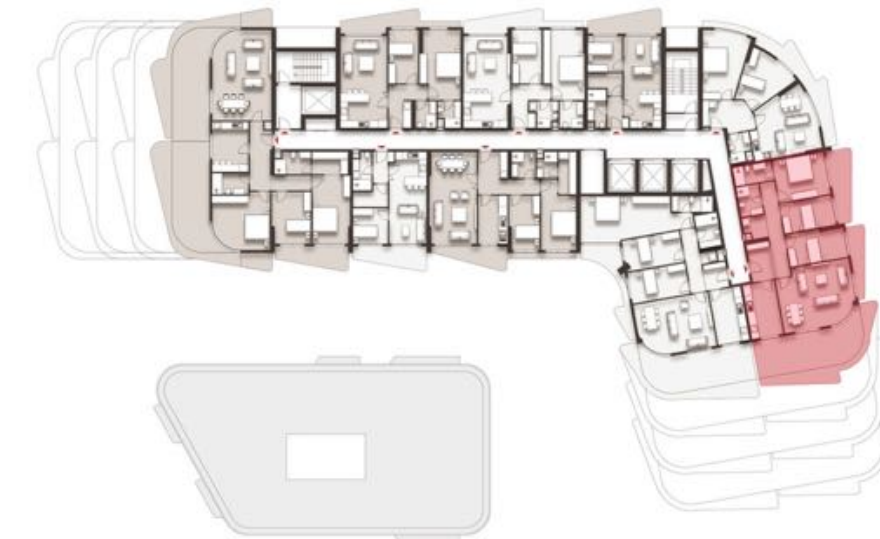


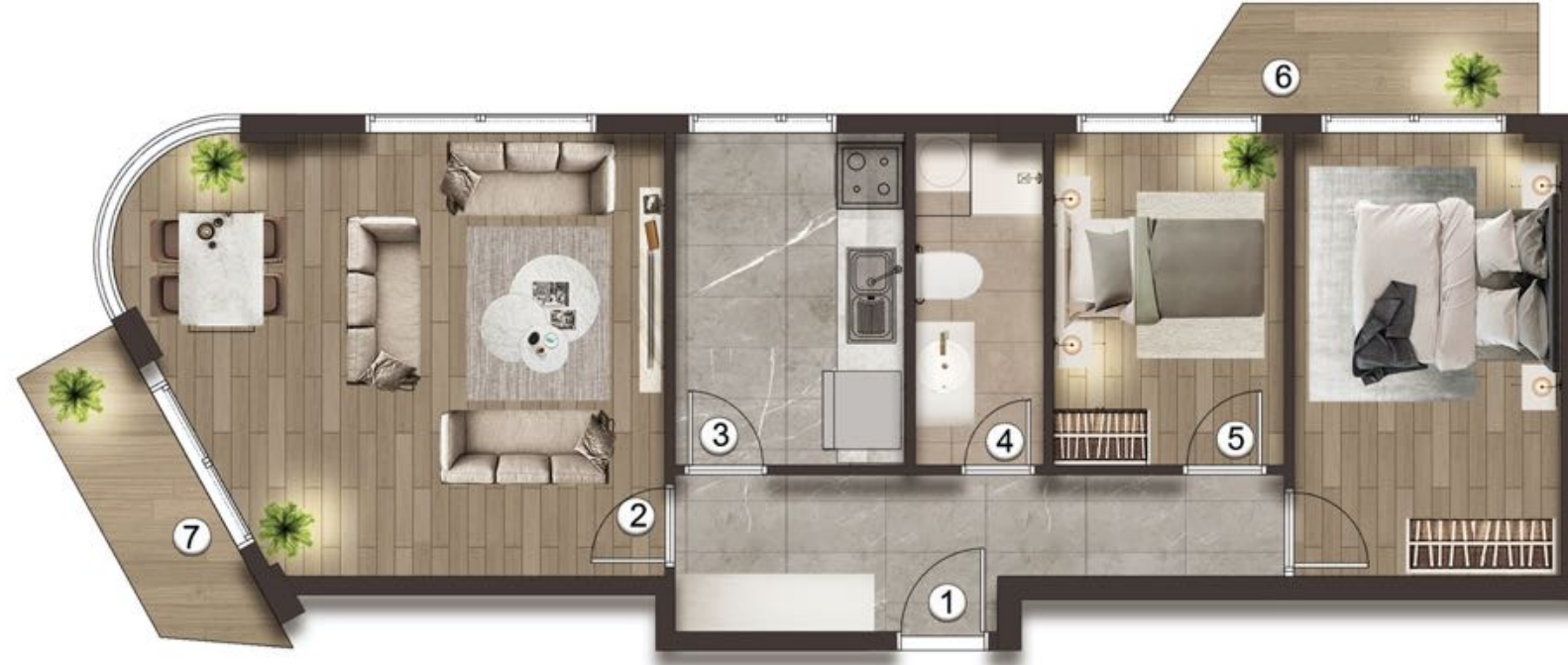


TİP-E (3+1) TERASLI

1 ANTRE+HOL	14,75 m2
2 MUTFAK	11,10 m2
3 SALON	28,45 m2
4 YATAK ODASI	11,60 m2
5 YATAK ODASI	9,60 m2
6 E.YATAK ODASI	14,10 m2
7 E. BANYO	4,65 m2
8 BANYO	4,30m2
9 ÇAM. ODASI	3,05m2
10 BALKON	9,00 m2
11 BALKON	6,05 m2
12 TERAS	26,60 m2

NET ALAN : 117,00 m2
BRÜT ALAN : 156,70 m2





TIP-A (2+1)

1 ANTRE	9,35 m ²
2 SALON	25,60 m ²
3 MUTFAK	9,00 m ²
4 BANYO	5,05 m ²
5 YATAK ODASI	9,00 m ²
6 BALKON	4,30 m ²
7 BALKON	4,30 m ²

NET ALAN : 80,55 m²
BRÜT ALAN : 99,80 m²

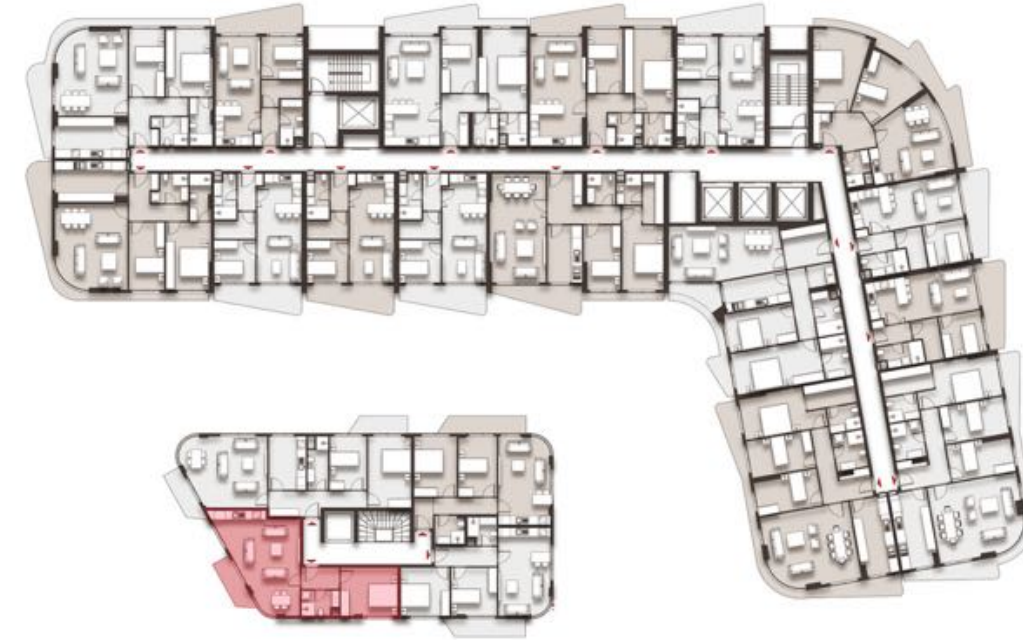




TİP-A (1+1)

1 ANTRE	3,70 m ²
2 SALON+MUTFAK	29,40 m ²
3 BANYO	4,00 m ²
4 YATAK ODASI	12,50 m ²
5 BALKON	4,30 m ²

NET ALAN : 53,90 m²
BRÜT ALAN : 66,80 m²



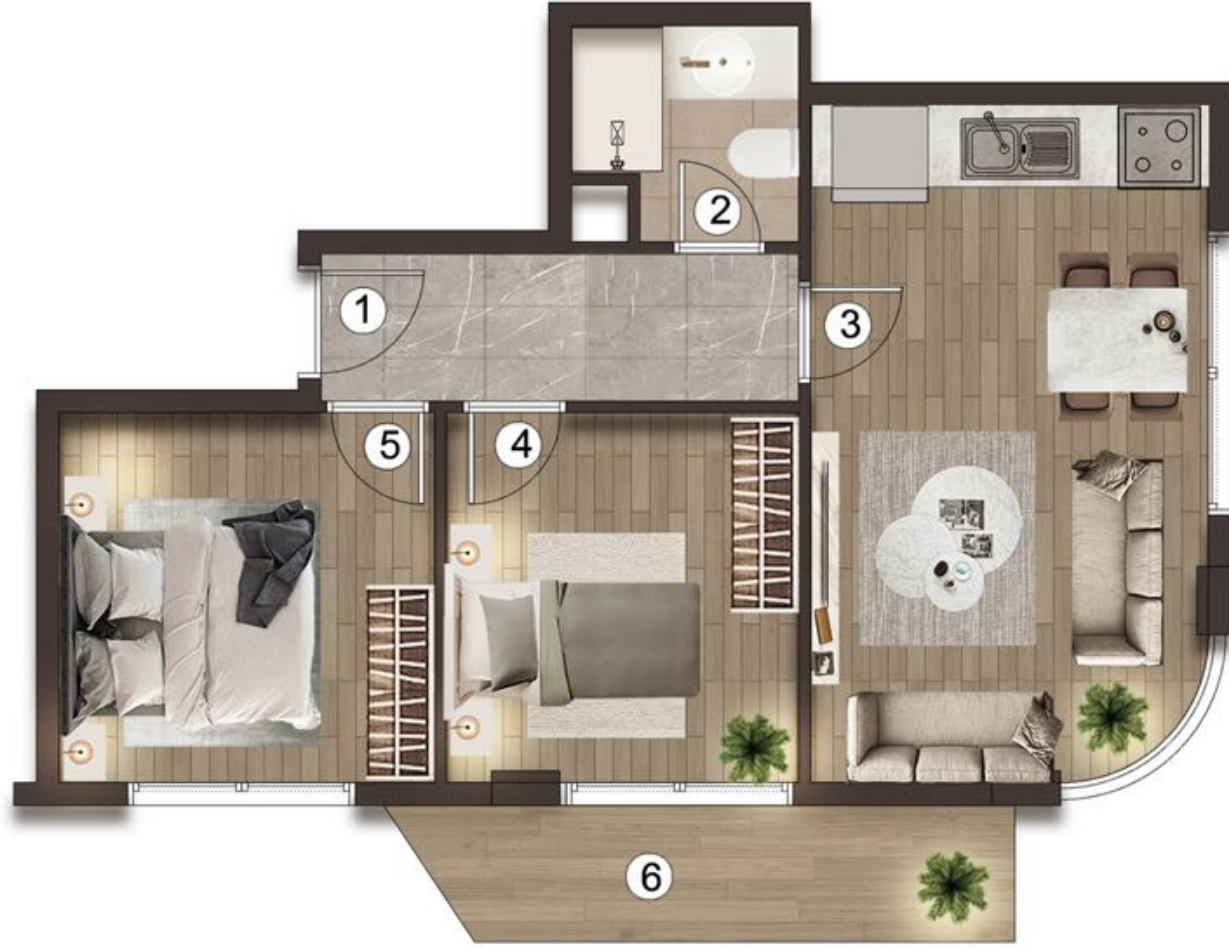


TİP B (2+1)

1 ANTRE	7,40 m ²
2 BANYO	3,80 m ²
3 MUTFAK+ SALON	20,45 m ²
4 YATAK ODASI	10,55 m ²
5 E.YATAK ODASI	11,75 m ²
6 BALKON	6,70 m ²

NET ALAN : 60,65 m²
BRÜT ALAN : 75,15 m²





TIP C (2+1)

1 ANTRE	5,45 m ²
2 BANYO	3,60 m ²
3 MUTFAK+SALON	20,45m ²
4 YATAK ODASI	10,05 m ²
5 E.YATAK ODASI	10,75 m ²
6 BALKON	6,20 m ²

NET ALAN : 56,35 m²
BRÜT ALAN : 69,80 m²

