



Kempinski Residences
The Creek

DUBAI

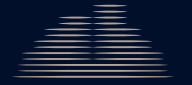
FLOOR PLANS TOWER 2

Kempinski
HOTELIERS SINCE 1897

LOFT TYPE A

Floor 1

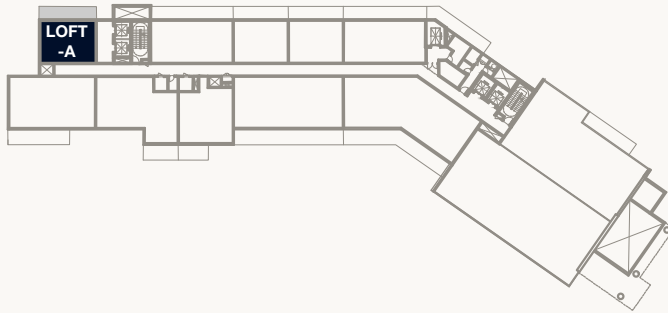
Internal Area	58.73 sq m	632.16 sq ft
Balcony Area	16.73 sq m	180.08 sq ft
Total Area	75.46 sq m	812.24 sq ft



Kempinski Residences
The Creek

DUBAI

Tower 2



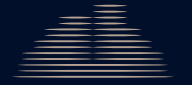
ENTRANCE

1. All dimensions are in imperial and metric, and measured to the structural elements and exclude wall finishes and construction tolerances. 2. All materials, dimensions, and drawings are approximate only. 3. Information is subject to change without notice, at developer's absolute discretion. 4. Actual area may vary from the stated area. 5. Balcony sizes may vary between units. 6. Drawings are not to scale. 7. All images used are for illustrative purposes only and do not represent the actual size, features, specifications, fittings, or furnishings. 8. The developer reserves the right to make revisions/alterations, at its absolute discretion, without any liability whatsoever.

LOFT TYPE A

Floor 2-7

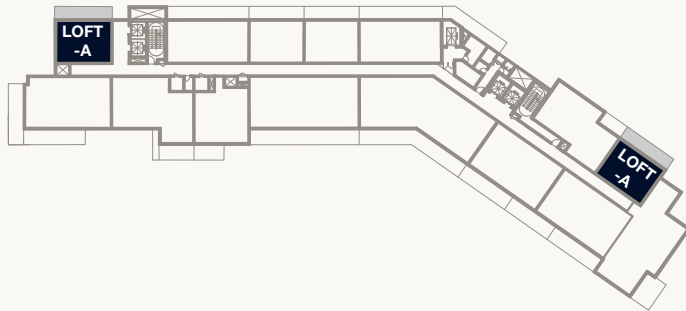
Internal Area	58.73 sq m	632.16 sq ft
Balcony Area	16.73 sq m	180.08 sq ft
Total Area	75.46 sq m	812.24 sq ft



Kempinski Residences
The Creek

DUBAI

Tower 2



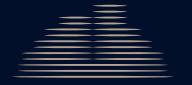
ENTRANCE

1. All dimensions are in imperial and metric, and measured to the structural elements and exclude wall finishes and construction tolerances. 2. All materials, dimensions, and drawings are approximate only. 3. Information is subject to change without notice, at developer's absolute discretion. 4. Actual area may vary from the stated area. 5. Balcony sizes may vary between units. 6. Drawings are not to scale. 7. All images used are for illustrative purposes only and do not represent the actual size, features, specifications, fittings, or furnishings. 8. The developer reserves the right to make revisions/alterations, at its absolute discretion, without any liability whatsoever.

LOFT TYPE A

Floor 8-9

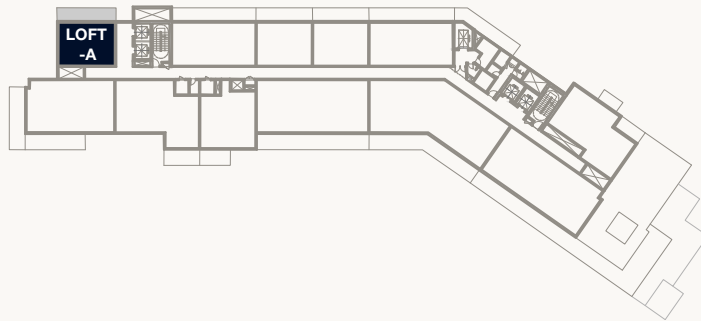
Internal Area	58.73 sq m	632.16 sq ft
Balcony Area	16.73 sq m	180.08 sq ft
Total Area	75.46 sq m	812.24 sq ft



Kempinski Residences
The Creek

DUBAI

Tower 2



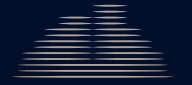
ENTRANCE

1. All dimensions are in imperial and metric, and measured to the structural elements and exclude wall finishes and construction tolerances. 2. All materials, dimensions, and drawings are approximate only. 3. Information is subject to change without notice, at developer's absolute discretion. 4. Actual area may vary from the stated area. 5. Balcony sizes may vary between units. 6. Drawings are not to scale. 7. All images used are for illustrative purposes only and do not represent the actual size, features, specifications, fittings, or furnishings. 8. The developer reserves the right to make revisions/alterations, at its absolute discretion, without any liability whatsoever.

LOFT TYPE A

Floor 10–11

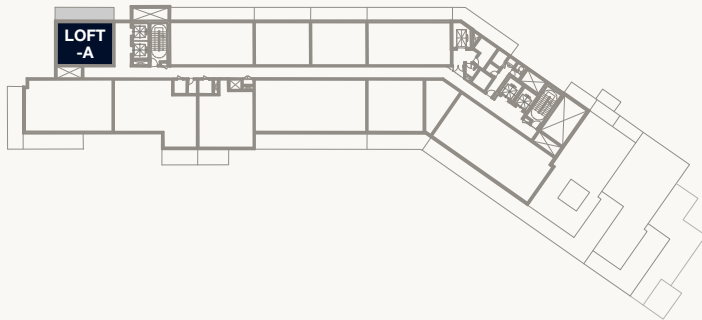
Internal Area	58.73 sq m	632.16 sq ft
Balcony Area	16.73 sq m	180.08 sq ft
Total Area	75.46 sq m	812.24 sq ft



Kempinski Residences
The Creek

DUBAI

Tower 2



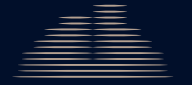
ENTRANCE

1. All dimensions are in imperial and metric, and measured to the structural elements and exclude wall finishes and construction tolerances. 2. All materials, dimensions, and drawings are approximate only. 3. Information is subject to change without notice, at developer's absolute discretion. 4. Actual area may vary from the stated area. 5. Balcony sizes may vary between units. 6. Drawings are not to scale. 7. All images used are for illustrative purposes only and do not represent the actual size, features, specifications, fittings, or furnishings. 8. The developer reserves the right to make revisions/alterations, at its absolute discretion, without any liability whatsoever.

LOFT TYPE A

Floor 12

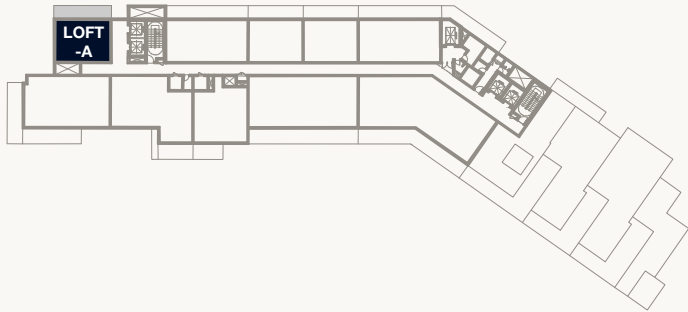
Internal Area	58.73 sq m	632.16 sq ft
Balcony Area	16.73 sq m	180.08 sq ft
Total Area	75.46 sq m	812.24 sq ft



Kempinski Residences
The Creek

DUBAI

Tower 2



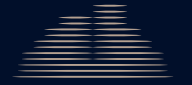
ENTRANCE

1. All dimensions are in imperial and metric, and measured to the structural elements and exclude wall finishes and construction tolerances. 2. All materials, dimensions, and drawings are approximate only. 3. Information is subject to change without notice, at developer's absolute discretion. 4. Actual area may vary from the stated area. 5. Balcony sizes may vary between units. 6. Drawings are not to scale. 7. All images used are for illustrative purposes only and do not represent the actual size, features, specifications, fittings, or furnishings. 8. The developer reserves the right to make revisions/alterations, at its absolute discretion, without any liability whatsoever.

LOFT TYPE A1

Floor 1

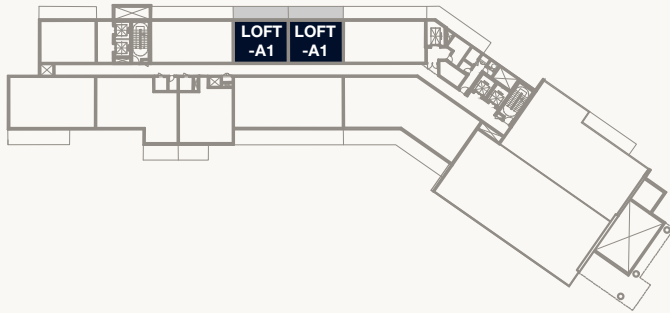
Internal Area	57.72 sq m	621.29 sq ft
Balcony Area	15.98 sq m	172.01 sq ft
Total Area	73.70 sq m	793.30 sq ft



Kempinski Residences
The Creek

DUBAI

Tower 2

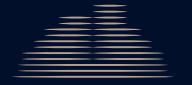


1. All dimensions are in imperial and metric, and measured to the structural elements and exclude wall finishes and construction tolerances. 2. All materials, dimensions, and drawings are approximate only. 3. Information is subject to change without notice, at developer's absolute discretion. 4. Actual area may vary from the stated area. 5. Balcony sizes may vary between units. 6. Drawings are not to scale. 7. All images used are for illustrative purposes only and do not represent the actual size, features, specifications, fittings, or furnishings. 8. The developer reserves the right to make revisions/alterations, at its absolute discretion, without any liability whatsoever.

LOFT TYPE A1

Floor 2-7

Internal Area	57.72 sq m	621.29 sq ft
Balcony Area	15.98 sq m	172.01 sq ft
Total Area	73.70 sq m	793.30 sq ft



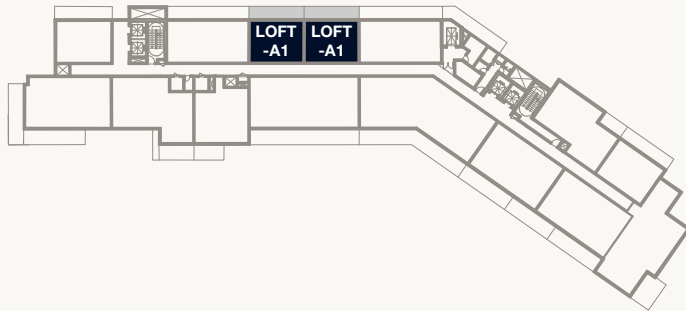
Kempinski Residences
The Creek

DUBAI

Tower 2



PARK
VIEW



WILDLIFE SANCTUARY
VIEW



CREEK HARBOUR
VIEW



BURJ KHALIFA
VIEW

NORTH



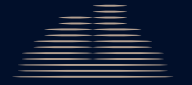
ENTRANCE

1. All dimensions are in imperial and metric, and measured to the structural elements and exclude wall finishes and construction tolerances. 2. All materials, dimensions, and drawings are approximate only. 3. Information is subject to change without notice, at developer's absolute discretion. 4. Actual area may vary from the stated area. 5. Balcony sizes may vary between units. 6. Drawings are not to scale. 7. All images used are for illustrative purposes only and do not represent the actual size, features, specifications, fittings, or furnishings. 8. The developer reserves the right to make revisions/alterations, at its absolute discretion, without any liability whatsoever.

LOFT TYPE A1

Floor 8-9

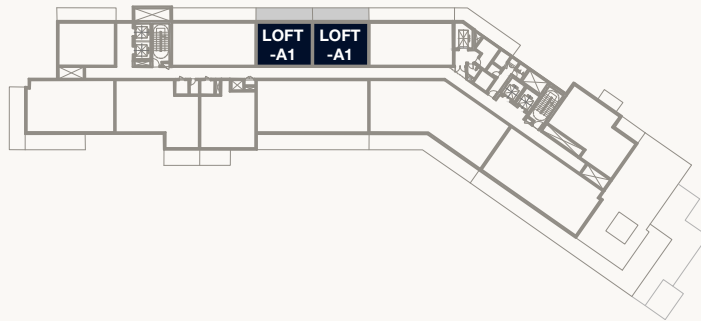
Internal Area	57.72 sq m	621.29 sq ft
Balcony Area	15.98 sq m	172.01 sq ft
Total Area	73.70 sq m	793.30 sq ft



Kempinski Residences
The Creek

DUBAI

Tower 2

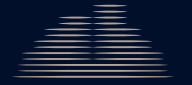


1. All dimensions are in imperial and metric, and measured to the structural elements and exclude wall finishes and construction tolerances. 2. All materials, dimensions, and drawings are approximate only. 3. Information is subject to change without notice, at developer's absolute discretion. 4. Actual area may vary from the stated area. 5. Balcony sizes may vary between units. 6. Drawings are not to scale. 7. All images used are for illustrative purposes only and do not represent the actual size, features, specifications, fittings, or furnishings. 8. The developer reserves the right to make revisions/alterations, at its absolute discretion, without any liability whatsoever.

LOFT TYPE A1

Floor 10-11

Internal Area	57.72 sq m	621.29 sq ft
Balcony Area	15.98 sq m	172.01 sq ft
Total Area	73.70 sq m	793.30 sq ft



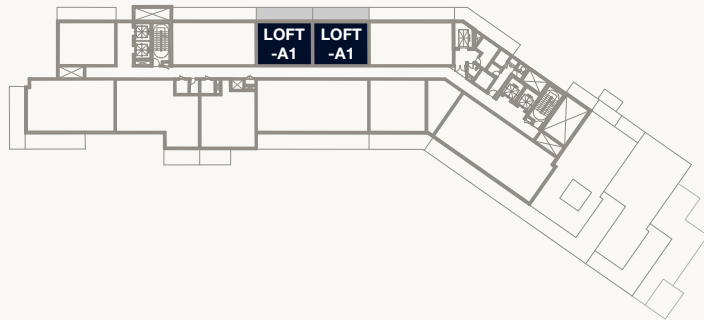
Kempinski Residences
The Creek

DUBAI

Tower 2



PARK
VIEW



WILDLIFE SANCTUARY
VIEW



CREEK HARBOUR
VIEW



BURJ KHALIFA
VIEW

NORTH



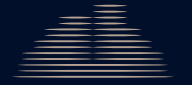
ENTRANCE

1. All dimensions are in imperial and metric, and measured to the structural elements and exclude wall finishes and construction tolerances. 2. All materials, dimensions, and drawings are approximate only. 3. Information is subject to change without notice, at developer's absolute discretion. 4. Actual area may vary from the stated area. 5. Balcony sizes may vary between units. 6. Drawings are not to scale. 7. All images used are for illustrative purposes only and do not represent the actual size, features, specifications, fittings, or furnishings. 8. The developer reserves the right to make revisions/alterations, at its absolute discretion, without any liability whatsoever.

LOFT TYPE A1

Floor 12-14

Internal Area	57.72 sq m	621.29 sq ft
Balcony Area	15.98 sq m	172.01 sq ft
Total Area	73.70 sq m	793.30 sq ft



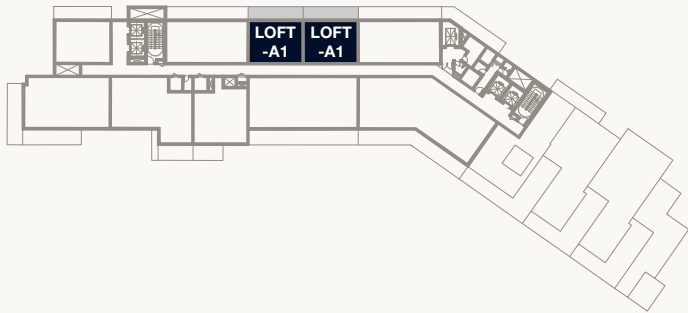
Kempinski Residences
The Creek

DUBAI

Tower 2



PARK
VIEW



WILDLIFE SANCTUARY
VIEW



CREEK HARBOUR
VIEW



BURJ KHALIFA
VIEW

NORTH



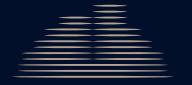
ENTRANCE

1. All dimensions are in imperial and metric, and measured to the structural elements and exclude wall finishes and construction tolerances. 2. All materials, dimensions, and drawings are approximate only. 3. Information is subject to change without notice, at developer's absolute discretion. 4. Actual area may vary from the stated area. 5. Balcony sizes may vary between units. 6. Drawings are not to scale. 7. All images used are for illustrative purposes only and do not represent the actual size, features, specifications, fittings, or furnishings. 8. The developer reserves the right to make revisions/alterations, at its absolute discretion, without any liability whatsoever.

1 BEDROOM – TYPE A

Floor 1

Internal Area	88.06 sq m	947.87 sq ft
Balcony Area	24.16 sq m	260.06 sq ft
Total Area	112.22 sq m	1,207.93 sq ft



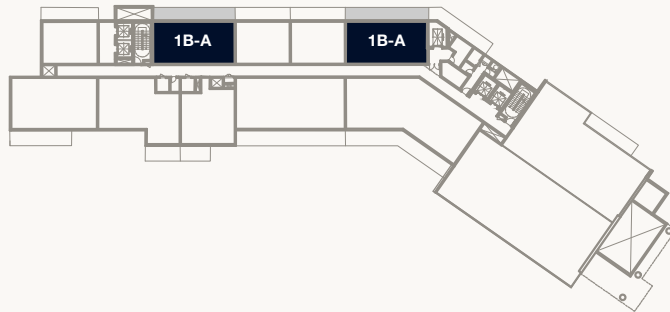
Kempinski Residences
The Creek

DUBAI

Tower 2



PARK
VIEW



WILDLIFE SANCTUARY
VIEW



CREEK HARBOUR
VIEW



BURJ KHALIFA
VIEW

NORTH



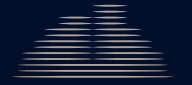
ENTRANCE

1. All dimensions are in imperial and metric, and measured to the structural elements and exclude wall finishes and construction tolerances. 2. All materials, dimensions, and drawings are approximate only. 3. Information is subject to change without notice, at developer's absolute discretion. 4. Actual area may vary from the stated area. 5. Balcony sizes may vary between units. 6. Drawings are not to scale. 7. All images used are for illustrative purposes only and do not represent the actual size, features, specifications, fittings, or furnishings. 8. The developer reserves the right to make revisions/alterations, at its absolute discretion, without any liability whatsoever.

1 BEDROOM – TYPE A

Floor 2-7

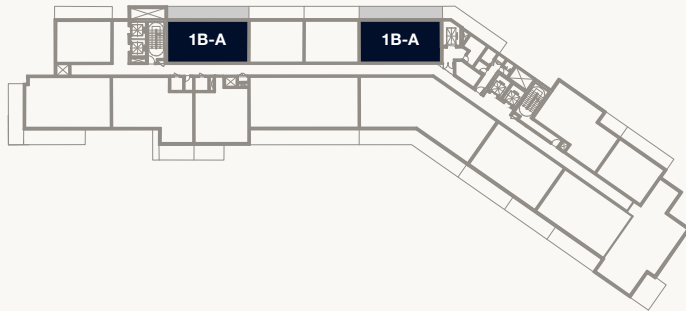
Internal Area	88.06 sq m	947.87 sq ft
Balcony Area	24.16 sq m	260.06 sq ft
Total Area	112.22 sq m	1,207.93 sq ft



Kempinski Residences
The Creek

DUBAI

Tower 2

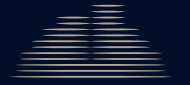


1. All dimensions are in imperial and metric, and measured to the structural elements and exclude wall finishes and construction tolerances. 2. All materials, dimensions, and drawings are approximate only. 3. Information is subject to change without notice, at developer's absolute discretion. 4. Actual area may vary from the stated area. 5. Balcony sizes may vary between units. 6. Drawings are not to scale. 7. All images used are for illustrative purposes only and do not represent the actual size, features, specifications, fittings, or furnishings. 8. The developer reserves the right to make revisions/alterations, at its absolute discretion, without any liability whatsoever.

1 BEDROOM – TYPE A

Floor 8–9

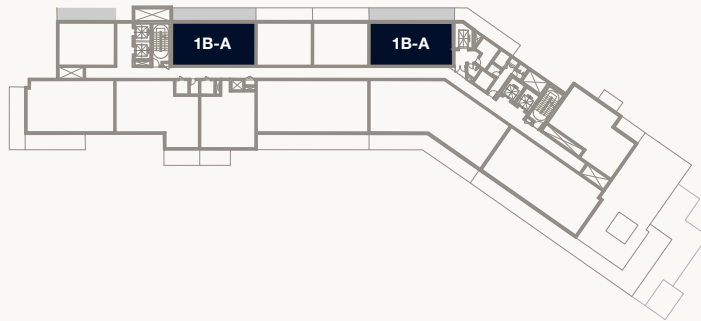
Internal Area	88.06 sq m	947.87 sq ft
Balcony Area	24.16 sq m	260.06 sq ft
Total Area	112.22 sq m	1,207.93 sq ft



Kempinski Residences
The Creek

DUBAI

Tower 2

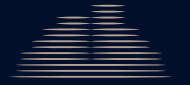


1. All dimensions are in imperial and metric, and measured to the structural elements and exclude wall finishes and construction tolerances. 2. All materials, dimensions, and drawings are approximate only. 3. Information is subject to change without notice, at developer's absolute discretion. 4. Actual area may vary from the stated area. 5. Balcony sizes may vary between units. 6. Drawings are not to scale. 7. All images used are for illustrative purposes only and do not represent the actual size, features, specifications, fittings, or furnishings. 8. The developer reserves the right to make revisions/alterations, at its absolute discretion, without any liability whatsoever.

1 BEDROOM – TYPE A

Floor 10–11

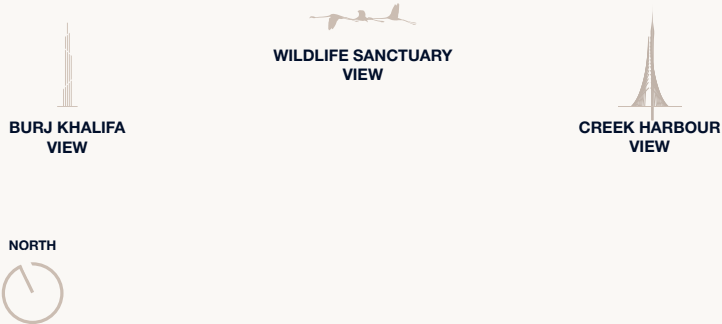
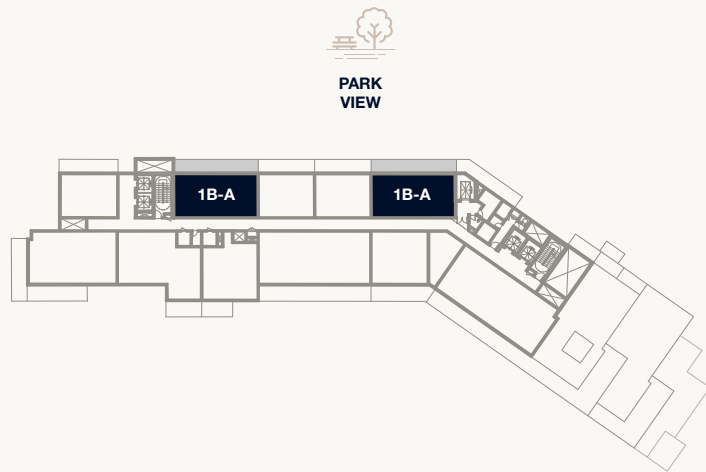
Internal Area	88.06 sq m	947.87 sq ft
Balcony Area	24.16 sq m	260.06 sq ft
Total Area	112.22 sq m	1,207.93 sq ft



Kempinski Residences
The Creek

DUBAI

Tower 2

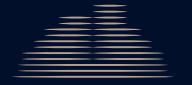


1. All dimensions are in imperial and metric, and measured to the structural elements and exclude wall finishes and construction tolerances. 2. All materials, dimensions, and drawings are approximate only. 3. Information is subject to change without notice, at developer's absolute discretion. 4. Actual area may vary from the stated area. 5. Balcony sizes may vary between units. 6. Drawings are not to scale. 7. All images used are for illustrative purposes only and do not represent the actual size, features, specifications, fittings, or furnishings. 8. The developer reserves the right to make revisions/alterations, at its absolute discretion, without any liability whatsoever.

1 BEDROOM – TYPE A

Floor 12–14

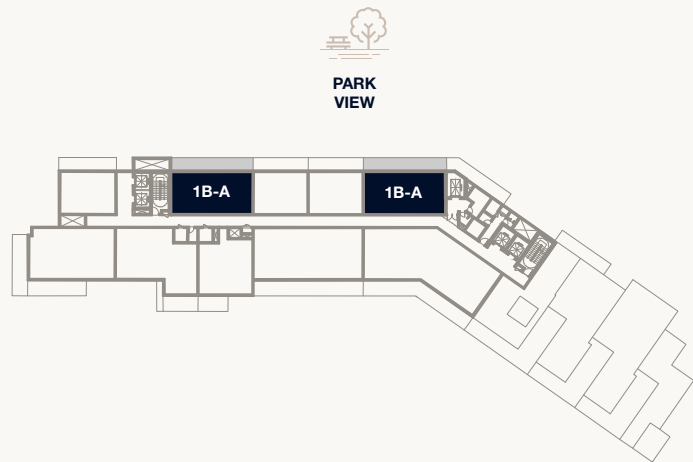
Internal Area	88.06 sq m	947.87 sq ft
Balcony Area	24.16 sq m	260.06 sq ft
Total Area	112.22 sq m	1,207.93 sq ft



Kempinski Residences
The Creek

DUBAI

Tower 2



PARK
VIEW

WILDLIFE SANCTUARY
VIEW

CREEK HARBOUR
VIEW

BURJ KHALIFA
VIEW

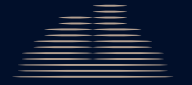


1. All dimensions are in imperial and metric, and measured to the structural elements and exclude wall finishes and construction tolerances. 2. All materials, dimensions, and drawings are approximate only. 3. Information is subject to change without notice, at developer's absolute discretion. 4. Actual area may vary from the stated area. 5. Balcony sizes may vary between units. 6. Drawings are not to scale. 7. All images used are for illustrative purposes only and do not represent the actual size, features, specifications, fittings, or furnishings. 8. The developer reserves the right to make revisions/alterations, at its absolute discretion, without any liability whatsoever.

1 BEDROOM – TYPE B

Floor 2–7

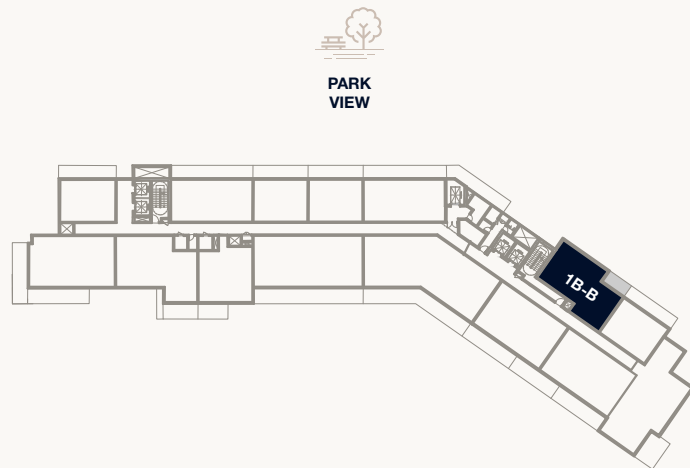
Internal Area	96.33 sq m	1,036.89 sq ft
Balcony Area	8.06 sq m	86.76 sq ft
Total Area	104.39 sq m	1,123.65 sq ft



Kempinski Residences
The Creek

DUBAI

Tower 2



PARK
VIEW



BURJ KHALIFA
VIEW



WILDLIFE SANCTUARY
VIEW



CREEK HARBOUR
VIEW



NORTH



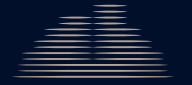
ENTRANCE

1. All dimensions are in imperial and metric, and measured to the structural elements and exclude wall finishes and construction tolerances. 2. All materials, dimensions, and drawings are approximate only. 3. Information is subject to change without notice, at developer's absolute discretion. 4. Actual area may vary from the stated area. 5. Balcony sizes may vary between units. 6. Drawings are not to scale. 7. All images used are for illustrative purposes only and do not represent the actual size, features, specifications, fittings, or furnishings. 8. The developer reserves the right to make revisions/alterations, at its absolute discretion, without any liability whatsoever.

1 BEDROOM – TYPE B

Floor 8–9

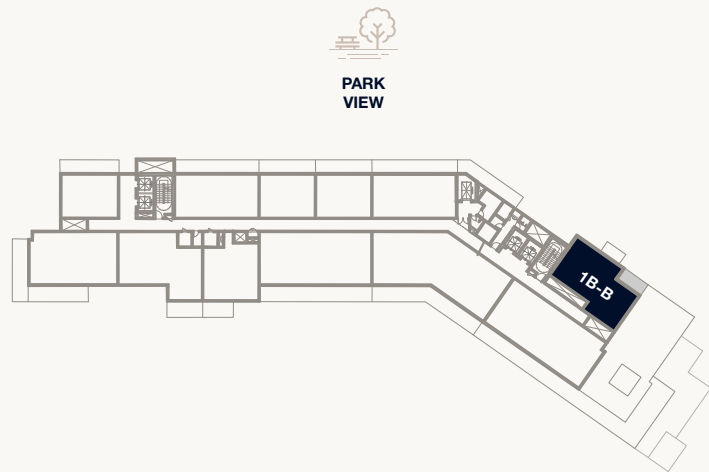
Internal Area	96.33 sq m	1,036.89 sq ft
Balcony Area	8.06 sq m	86.76 sq ft
Total Area	104.39 sq m	1,123.65 sq ft



Kempinski Residences
The Creek

DUBAI

Tower 2



PARK
VIEW



BURJ KHALIFA
VIEW



WILDLIFE SANCTUARY
VIEW



CREEK HARBOUR
VIEW

NORTH



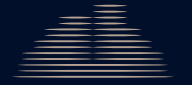
ENTRANCE

1. All dimensions are in imperial and metric, and measured to the structural elements and exclude wall finishes and construction tolerances. 2. All materials, dimensions, and drawings are approximate only. 3. Information is subject to change without notice, at developer's absolute discretion. 4. Actual area may vary from the stated area. 5. Balcony sizes may vary between units. 6. Drawings are not to scale. 7. All images used are for illustrative purposes only and do not represent the actual size, features, specifications, fittings, or furnishings. 8. The developer reserves the right to make revisions/alterations, at its absolute discretion, without any liability whatsoever.

1 BEDROOM – TYPE D1

Floor 10–11

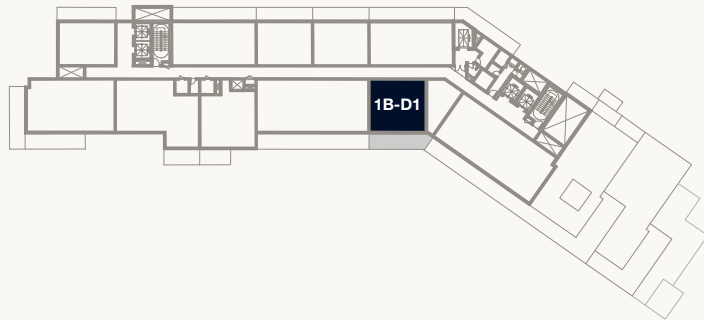
Internal Area	70.84 sq m	762.52 sq ft
Balcony Area	21.33 sq m	229.59 sq ft
Total Area	92.17 sq m	992.11 sq ft



Kempinski Residences
The Creek

DUBAI

Tower 2

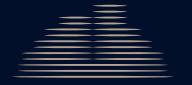


1. All dimensions are in imperial and metric, and measured to the structural elements and exclude wall finishes and construction tolerances. 2. All materials, dimensions, and drawings are approximate only. 3. Information is subject to change without notice, at developer's absolute discretion. 4. Actual area may vary from the stated area. 5. Balcony sizes may vary between units. 6. Drawings are not to scale. 7. All images used are for illustrative purposes only and do not represent the actual size, features, specifications, fittings, or furnishings. 8. The developer reserves the right to make revisions/alterations, at its absolute discretion, without any liability whatsoever.

1 BEDROOM – TYPE E

Floor 1

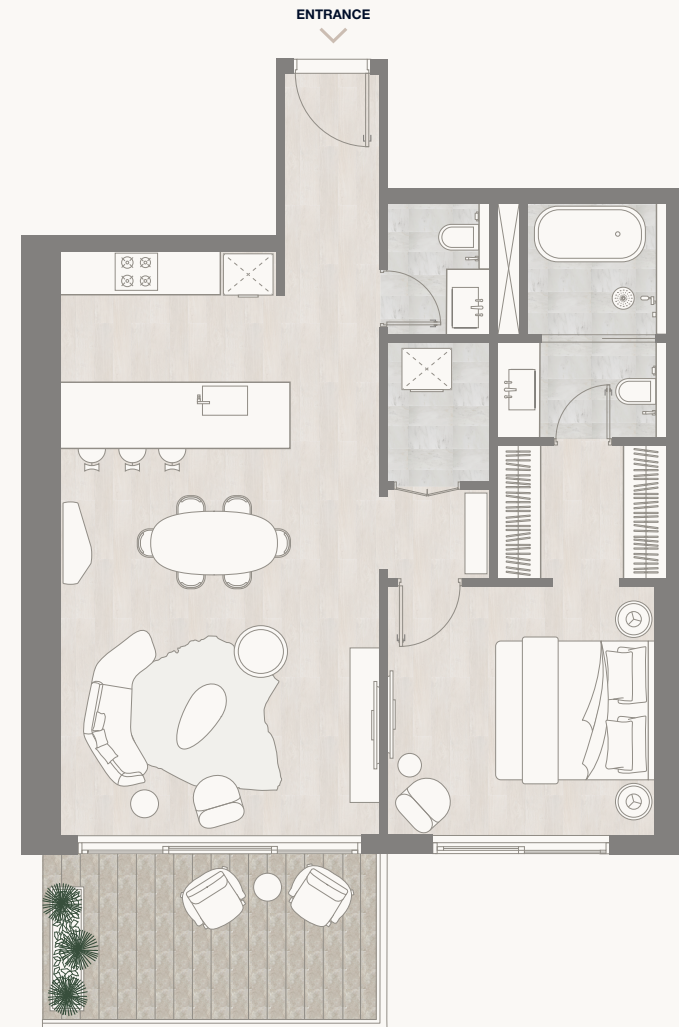
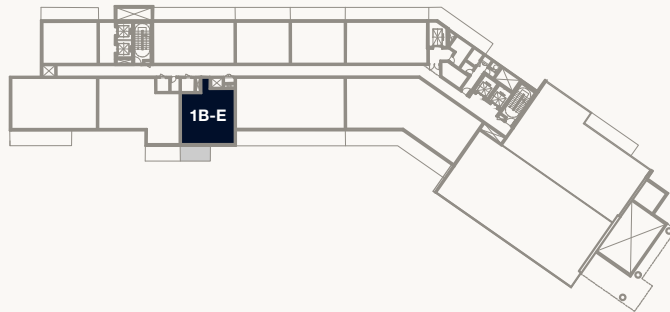
Internal Area	77.43 sq m	833.45 sq ft
Balcony Area	10.21 sq m	109.90 sq ft
Total Area	87.64 sq m	943.35 sq ft



Kempinski Residences
The Creek

DUBAI

Tower 2

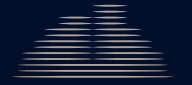


1. All dimensions are in imperial and metric, and measured to the structural elements and exclude wall finishes and construction tolerances. 2. All materials, dimensions, and drawings are approximate only. 3. Information is subject to change without notice, at developer's absolute discretion. 4. Actual area may vary from the stated area. 5. Balcony sizes may vary between units. 6. Drawings are not to scale. 7. All images used are for illustrative purposes only and do not represent the actual size, features, specifications, fittings, or furnishings. 8. The developer reserves the right to make revisions/alterations, at its absolute discretion, without any liability whatsoever.

1 BEDROOM – TYPE E

Floor 2-7

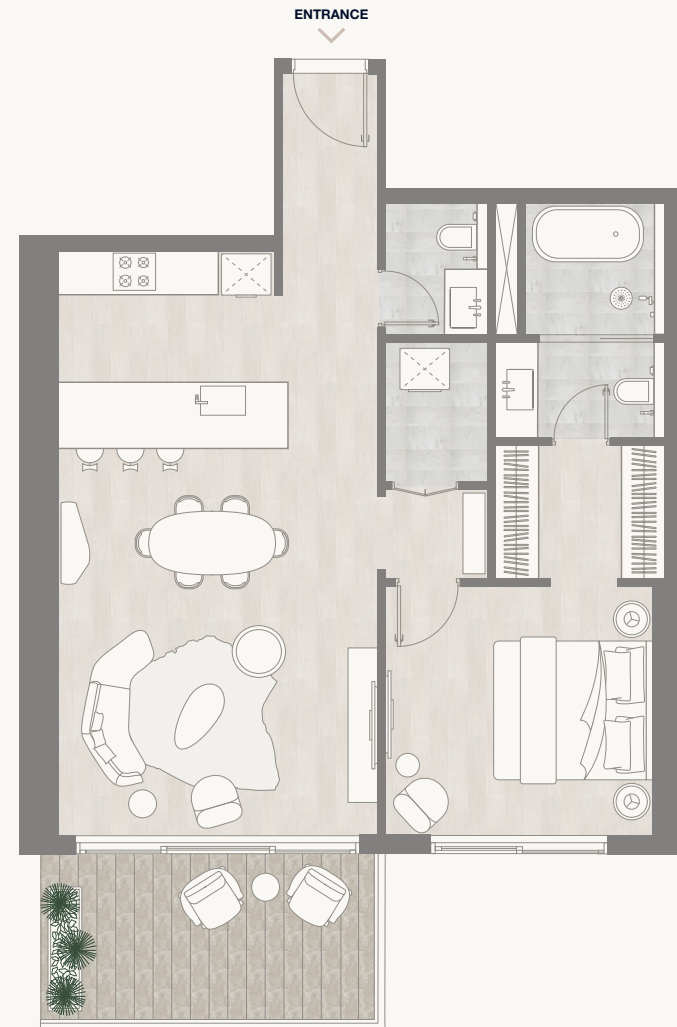
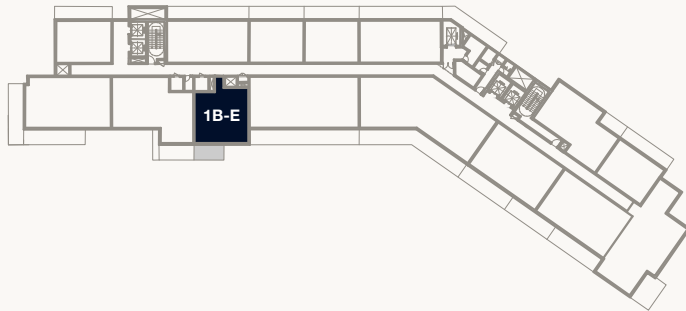
Internal Area	77.43 sq m	833.45 sq ft
Balcony Area	10.21 sq m	109.90 sq ft
Total Area	87.64 sq m	943.35 sq ft



Kempinski Residences
The Creek

DUBAI

Tower 2

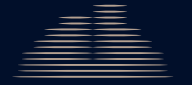


1. All dimensions are in imperial and metric, and measured to the structural elements and exclude wall finishes and construction tolerances. 2. All materials, dimensions, and drawings are approximate only. 3. Information is subject to change without notice, at developer's absolute discretion. 4. Actual area may vary from the stated area. 5. Balcony sizes may vary between units. 6. Drawings are not to scale. 7. All images used are for illustrative purposes only and do not represent the actual size, features, specifications, fittings, or furnishings. 8. The developer reserves the right to make revisions/alterations, at its absolute discretion, without any liability whatsoever.

1 BEDROOM – TYPE E

Floor 8-9

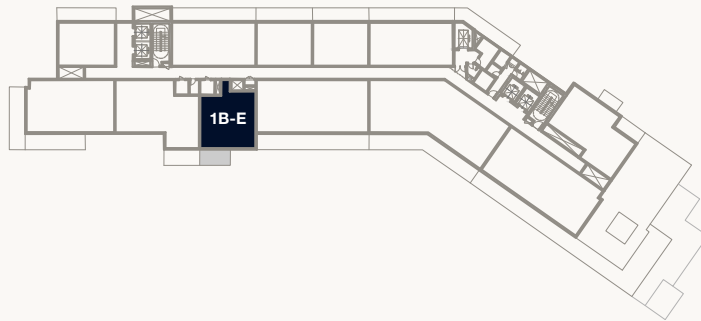
Internal Area	77.43 sq m	833.45 sq ft
Balcony Area	10.21 sq m	109.90 sq ft
Total Area	87.64 sq m	943.35 sq ft



Kempinski Residences
The Creek

DUBAI

Tower 2



NORTH

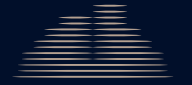


1. All dimensions are in imperial and metric, and measured to the structural elements and exclude wall finishes and construction tolerances. 2. All materials, dimensions, and drawings are approximate only. 3. Information is subject to change without notice, at developer's absolute discretion. 4. Actual area may vary from the stated area. 5. Balcony sizes may vary between units. 6. Drawings are not to scale. 7. All images used are for illustrative purposes only and do not represent the actual size, features, specifications, fittings, or furnishings. 8. The developer reserves the right to make revisions/alterations, at its absolute discretion, without any liability whatsoever.

1 BEDROOM – TYPE E

Floor 10-11

Internal Area	77.43 sq m	833.45 sq ft
Balcony Area	10.21 sq m	109.90 sq ft
Total Area	87.64 sq m	943.35 sq ft



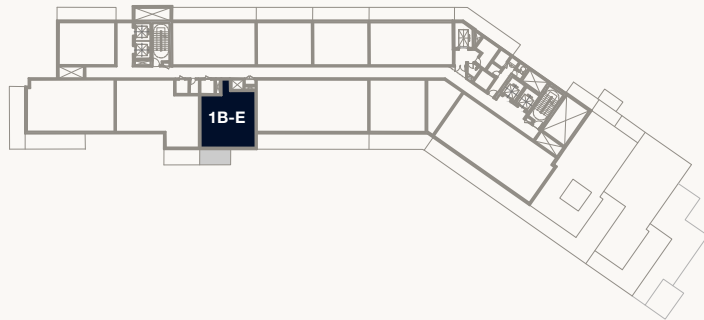
Kempinski Residences
The Creek

DUBAI

Tower 2



PARK
VIEW



1B-E



WILDLIFE SANCTUARY
VIEW



BURJ KHALIFA
VIEW

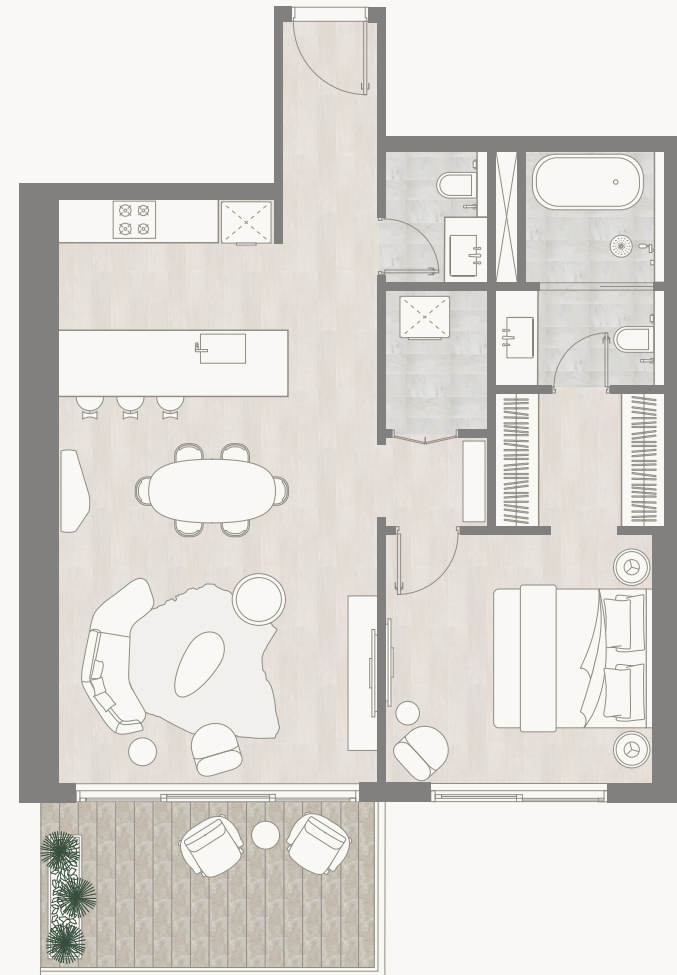


CREEK HARBOUR
VIEW

NORTH



ENTRANCE

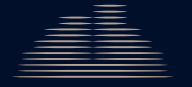


1. All dimensions are in imperial and metric, and measured to the structural elements and exclude wall finishes and construction tolerances. 2. All materials, dimensions, and drawings are approximate only. 3. Information is subject to change without notice, at developer's absolute discretion. 4. Actual area may vary from the stated area. 5. Balcony sizes may vary between units. 6. Drawings are not to scale. 7. All images used are for illustrative purposes only and do not represent the actual size, features, specifications, fittings, or furnishings. 8. The developer reserves the right to make revisions/alterations, at its absolute discretion, without any liability whatsoever.

1 BEDROOM – TYPE E

Floor 12-13

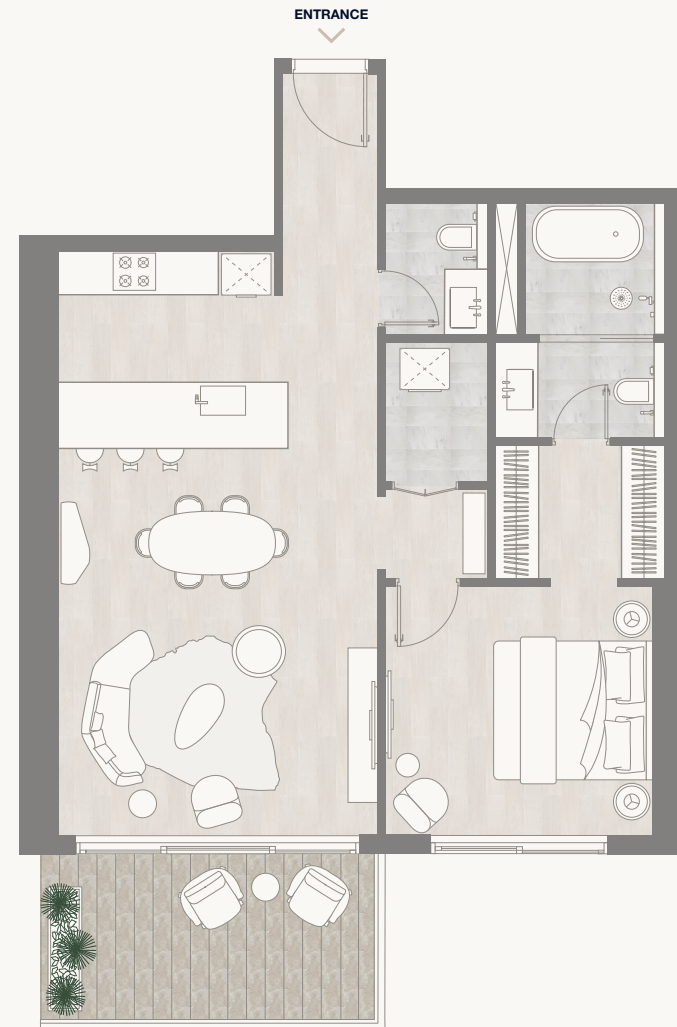
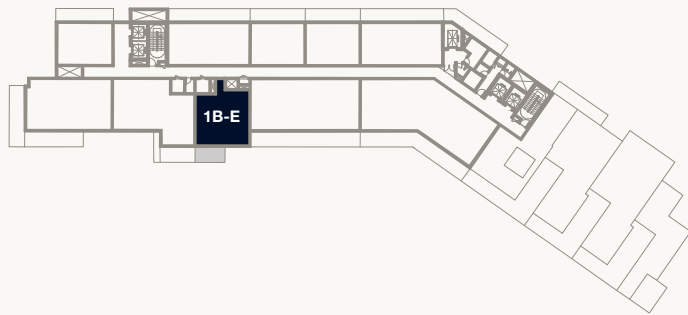
Internal Area	77.43 sq m	833.45 sq ft
Balcony Area	10.21 sq m	109.90 sq ft
Total Area	87.64 sq m	943.35 sq ft



Kempinski Residences
The Creek

DUBAI

Tower 2

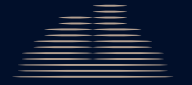


1. All dimensions are in imperial and metric, and measured to the structural elements and exclude wall finishes and construction tolerances. 2. All materials, dimensions, and drawings are approximate only. 3. Information is subject to change without notice, at developer's absolute discretion. 4. Actual area may vary from the stated area. 5. Balcony sizes may vary between units. 6. Drawings are not to scale. 7. All images used are for illustrative purposes only and do not represent the actual size, features, specifications, fittings, or furnishings. 8. The developer reserves the right to make revisions/alterations, at its absolute discretion, without any liability whatsoever.

2 BEDROOM – TYPE A

Floor 2–5

Internal Area	105.66 sq m	1,137.31 sq ft
Balcony Area	20.71 sq m	222.92 sq ft
Total Area	126.37 sq m	1,360.23 sq ft



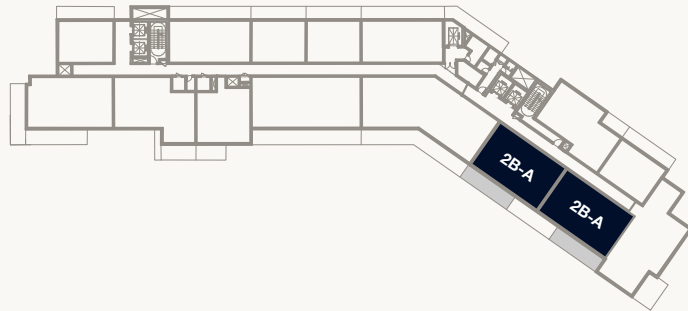
Kempinski Residences
The Creek

DUBAI

Tower 2



PARK
VIEW



WILDLIFE SANCTUARY
VIEW



BURJ KHALIFA
VIEW



CREEK HARBOUR
VIEW

NORTH

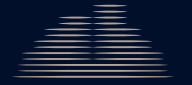


1. All dimensions are in imperial and metric, and measured to the structural elements and exclude wall finishes and construction tolerances. 2. All materials, dimensions, and drawings are approximate only. 3. Information is subject to change without notice, at developer's absolute discretion. 4. Actual area may vary from the stated area. 5. Balcony sizes may vary between units. 6. Drawings are not to scale. 7. All images used are for illustrative purposes only and do not represent the actual size, features, specifications, fittings, or furnishings. 8. The developer reserves the right to make revisions/alterations, at its absolute discretion, without any liability whatsoever.

2 BEDROOM – TYPE A

Floor 6–7

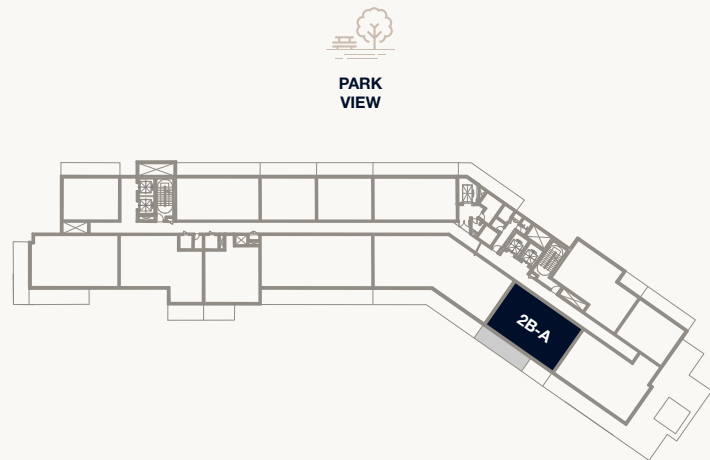
Internal Area	105.66 sq m	1,137.31 sq ft
Balcony Area	20.71 sq m	222.92 sq ft
Total Area	126.37 sq m	1,360.23 sq ft



Kempinski Residences
The Creek

DUBAI

Tower 2



PARK
VIEW

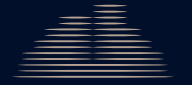


1. All dimensions are in imperial and metric, and measured to the structural elements and exclude wall finishes and construction tolerances. 2. All materials, dimensions, and drawings are approximate only. 3. Information is subject to change without notice, at developer's absolute discretion. 4. Actual area may vary from the stated area. 5. Balcony sizes may vary between units. 6. Drawings are not to scale. 7. All images used are for illustrative purposes only and do not represent the actual size, features, specifications, fittings, or furnishings. 8. The developer reserves the right to make revisions/alterations, at its absolute discretion, without any liability whatsoever.

2 BEDROOM – TYPE B

Floor 1

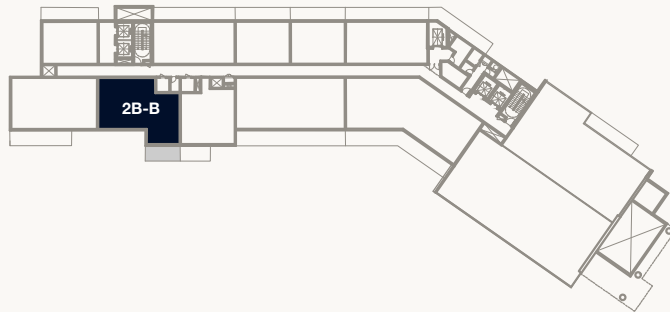
Internal Area	108.75 sq m	1,170.58 sq ft
Balcony Area	12.05 sq m	129.71 sq ft
Total Area	120.80 sq m	1,300.29 sq ft



Kempinski Residences
The Creek

DUBAI

Tower 2

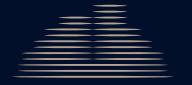


1. All dimensions are in imperial and metric, and measured to the structural elements and exclude wall finishes and construction tolerances. 2. All materials, dimensions, and drawings are approximate only. 3. Information is subject to change without notice, at developer's absolute discretion. 4. Actual area may vary from the stated area. 5. Balcony sizes may vary between units. 6. Drawings are not to scale. 7. All images used are for illustrative purposes only and do not represent the actual size, features, specifications, fittings, or furnishings. 8. The developer reserves the right to make revisions/alterations, at its absolute discretion, without any liability whatsoever.

2 BEDROOM – TYPE B

Floor 2-7

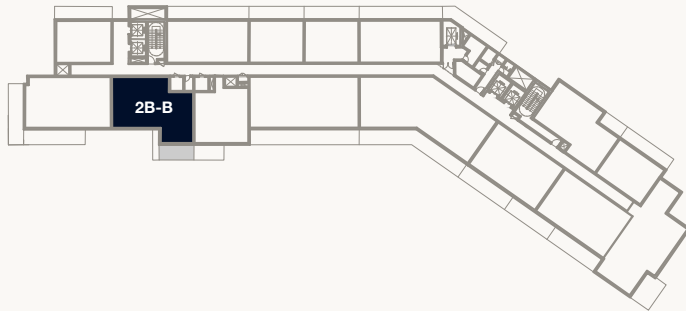
Internal Area	108.75 sq m	1,170.58 sq ft
Balcony Area	12.05 sq m	129.71 sq ft
Total Area	120.80 sq m	1,300.29 sq ft



Kempinski Residences
The Creek

DUBAI

Tower 2



NORTH

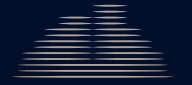


1. All dimensions are in imperial and metric, and measured to the structural elements and exclude wall finishes and construction tolerances. 2. All materials, dimensions, and drawings are approximate only. 3. Information is subject to change without notice, at developer's absolute discretion. 4. Actual area may vary from the stated area. 5. Balcony sizes may vary between units. 6. Drawings are not to scale. 7. All images used are for illustrative purposes only and do not represent the actual size, features, specifications, fittings, or furnishings. 8. The developer reserves the right to make revisions/alterations, at its absolute discretion, without any liability whatsoever.

2 BEDROOM – TYPE B

Floor 8-9

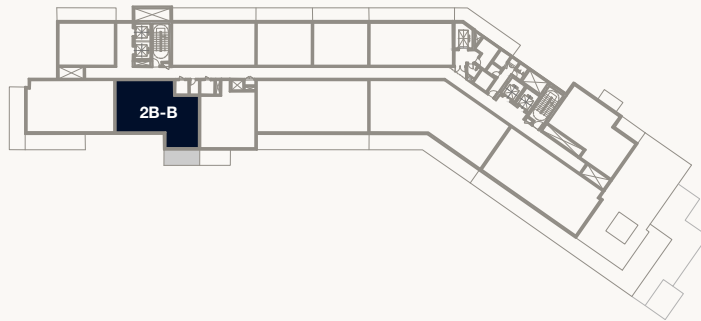
Internal Area	108.75 sq m	1,170.58 sq ft
Balcony Area	12.05 sq m	129.71 sq ft
Total Area	120.80 sq m	1,300.29 sq ft



Kempinski Residences
The Creek

DUBAI

Tower 2



NORTH

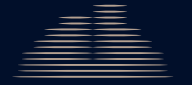


1. All dimensions are in imperial and metric, and measured to the structural elements and exclude wall finishes and construction tolerances. 2. All materials, dimensions, and drawings are approximate only. 3. Information is subject to change without notice, at developer's absolute discretion. 4. Actual area may vary from the stated area. 5. Balcony sizes may vary between units. 6. Drawings are not to scale. 7. All images used are for illustrative purposes only and do not represent the actual size, features, specifications, fittings, or furnishings. 8. The developer reserves the right to make revisions/alterations, at its absolute discretion, without any liability whatsoever.

2 BEDROOM – TYPE B

Floor 10-11

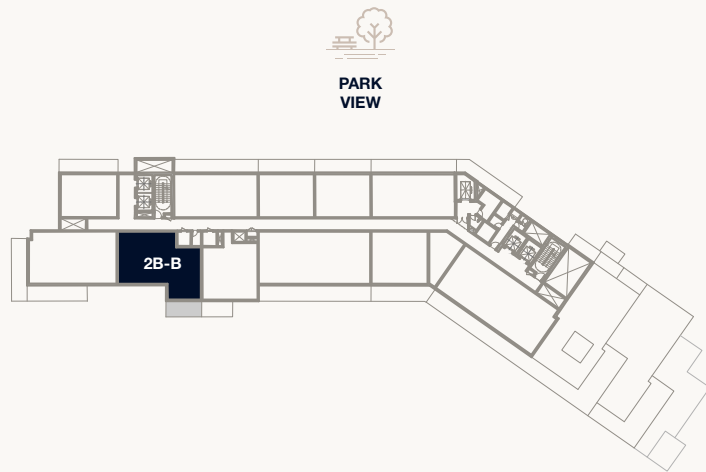
Internal Area	108.75 sq m	1,170.58 sq ft
Balcony Area	12.05 sq m	129.71 sq ft
Total Area	120.80 sq m	1,300.29 sq ft



Kempinski Residences
The Creek

DUBAI

Tower 2



PARK
VIEW



BURJ KHALIFA
VIEW



WILDLIFE SANCTUARY
VIEW



CREEK HARBOUR
VIEW

NORTH

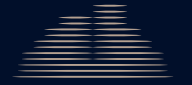


1. All dimensions are in imperial and metric, and measured to the structural elements and exclude wall finishes and construction tolerances. 2. All materials, dimensions, and drawings are approximate only. 3. Information is subject to change without notice, at developer's absolute discretion. 4. Actual area may vary from the stated area. 5. Balcony sizes may vary between units. 6. Drawings are not to scale. 7. All images used are for illustrative purposes only and do not represent the actual size, features, specifications, fittings, or furnishings. 8. The developer reserves the right to make revisions/alterations, at its absolute discretion, without any liability whatsoever.

2 BEDROOM – TYPE B

Floor 12-14

Internal Area	108.75 sq m	1,170.58 sq ft
Balcony Area	12.05 sq m	129.71 sq ft
Total Area	120.80 sq m	1,300.29 sq ft



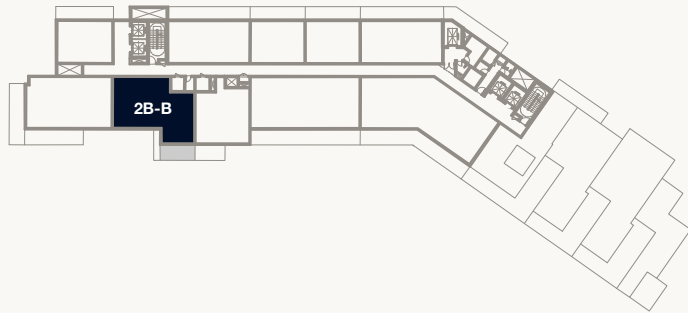
Kempinski Residences
The Creek

DUBAI

Tower 2



PARK
VIEW



2B-B



WILDLIFE SANCTUARY
VIEW



BURJ KHALIFA
VIEW



CREEK HARBOUR
VIEW

NORTH

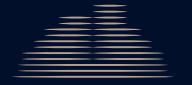


1. All dimensions are in imperial and metric, and measured to the structural elements and exclude wall finishes and construction tolerances. 2. All materials, dimensions, and drawings are approximate only. 3. Information is subject to change without notice, at developer's absolute discretion. 4. Actual area may vary from the stated area. 5. Balcony sizes may vary between units. 6. Drawings are not to scale. 7. All images used are for illustrative purposes only and do not represent the actual size, features, specifications, fittings, or furnishings. 8. The developer reserves the right to make revisions/alterations, at its absolute discretion, without any liability whatsoever.

2 BEDROOM – TYPE C

Floor 1

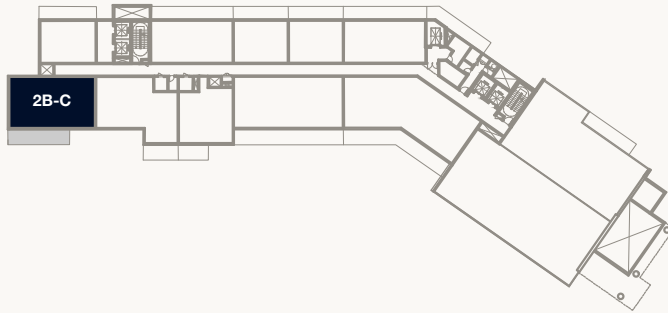
Internal Area	111.41 sq m	1,199.21 sq ft
Balcony Area	21.22 sq m	228.41 sq ft
Total Area	132.63 sq m	1,427.62 sq ft



Kempinski Residences
The Creek

DUBAI

Tower 2



NORTH

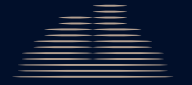


1. All dimensions are in imperial and metric, and measured to the structural elements and exclude wall finishes and construction tolerances. 2. All materials, dimensions, and drawings are approximate only. 3. Information is subject to change without notice, at developer's absolute discretion. 4. Actual area may vary from the stated area. 5. Balcony sizes may vary between units. 6. Drawings are not to scale. 7. All images used are for illustrative purposes only and do not represent the actual size, features, specifications, fittings, or furnishings. 8. The developer reserves the right to make revisions/alterations, at its absolute discretion, without any liability whatsoever.

2 BEDROOM – TYPE C

Floor 2-7

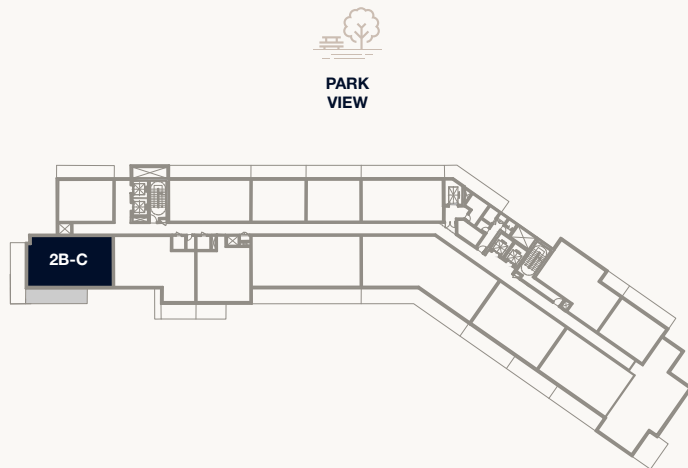
Internal Area	111.41 sq m	1,199.21 sq ft
Balcony Area	21.22 sq m	228.41 sq ft
Total Area	132.63 sq m	1,427.62 sq ft



Kempinski Residences
The Creek

DUBAI

Tower 2



PARK
VIEW

WILDLIFE SANCTUARY
VIEW

BURJ KHALIFA
VIEW

CREEK HARBOUR
VIEW

NORTH

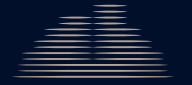


1. All dimensions are in imperial and metric, and measured to the structural elements and exclude wall finishes and construction tolerances. 2. All materials, dimensions, and drawings are approximate only. 3. Information is subject to change without notice, at developer's absolute discretion. 4. Actual area may vary from the stated area. 5. Balcony sizes may vary between units. 6. Drawings are not to scale. 7. All images used are for illustrative purposes only and do not represent the actual size, features, specifications, fittings, or furnishings. 8. The developer reserves the right to make revisions/alterations, at its absolute discretion, without any liability whatsoever.

2 BEDROOM – TYPE C

Floor 8-9

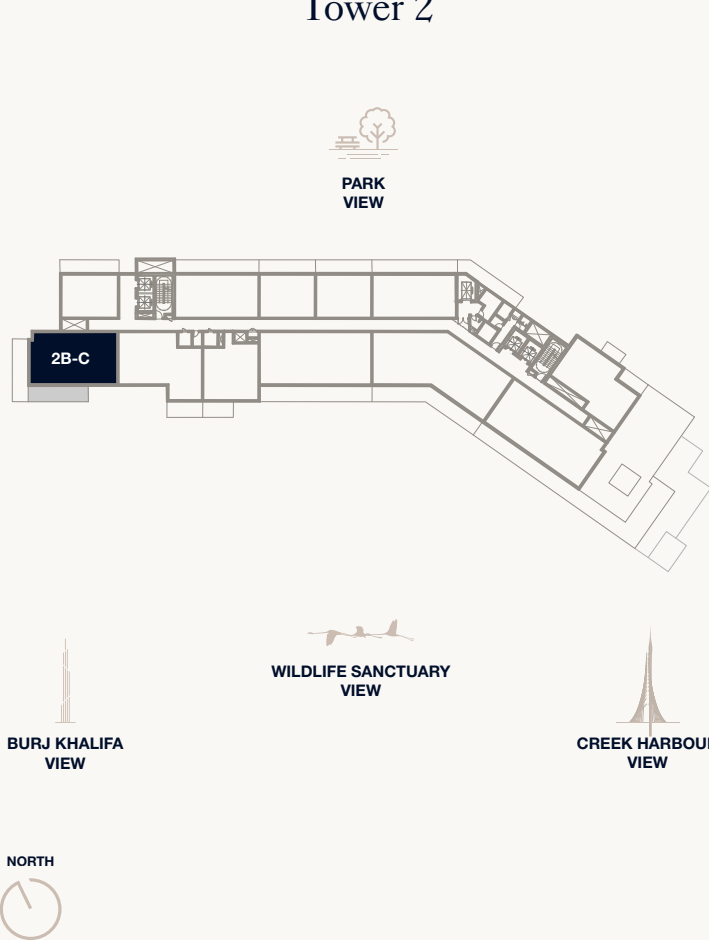
Internal Area	111.41 sq m	1,199.21 sq ft
Balcony Area	21.22 sq m	228.41 sq ft
Total Area	132.63 sq m	1,427.62 sq ft



Kempinski Residences
The Creek

DUBAI

Tower 2

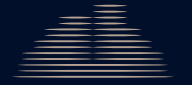


1. All dimensions are in imperial and metric, and measured to the structural elements and exclude wall finishes and construction tolerances. 2. All materials, dimensions, and drawings are approximate only. 3. Information is subject to change without notice, at developer's absolute discretion. 4. Actual area may vary from the stated area. 5. Balcony sizes may vary between units. 6. Drawings are not to scale. 7. All images used are for illustrative purposes only and do not represent the actual size, features, specifications, fittings, or furnishings. 8. The developer reserves the right to make revisions/alterations, at its absolute discretion, without any liability whatsoever.

2 BEDROOM – TYPE C

Floor 10-11

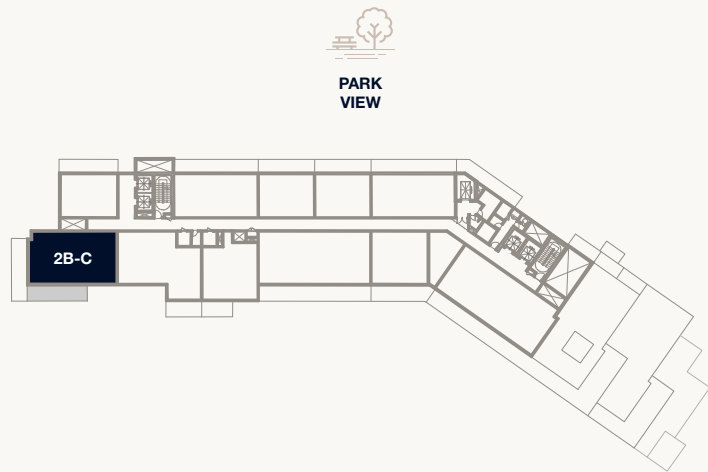
Internal Area	111.41 sq m	1,199.21 sq ft
Balcony Area	21.22 sq m	228.41 sq ft
Total Area	132.63 sq m	1,427.62 sq ft



Kempinski Residences
The Creek

DUBAI

Tower 2



PARK
VIEW

WILDLIFE SANCTUARY
VIEW



BURJ KHALIFA
VIEW



CREEK HARBOUR
VIEW

NORTH

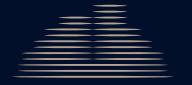


1. All dimensions are in imperial and metric, and measured to the structural elements and exclude wall finishes and construction tolerances. 2. All materials, dimensions, and drawings are approximate only. 3. Information is subject to change without notice, at developer's absolute discretion. 4. Actual area may vary from the stated area. 5. Balcony sizes may vary between units. 6. Drawings are not to scale. 7. All images used are for illustrative purposes only and do not represent the actual size, features, specifications, fittings, or furnishings. 8. The developer reserves the right to make revisions/alterations, at its absolute discretion, without any liability whatsoever.

2 BEDROOM – TYPE C

Floor 12

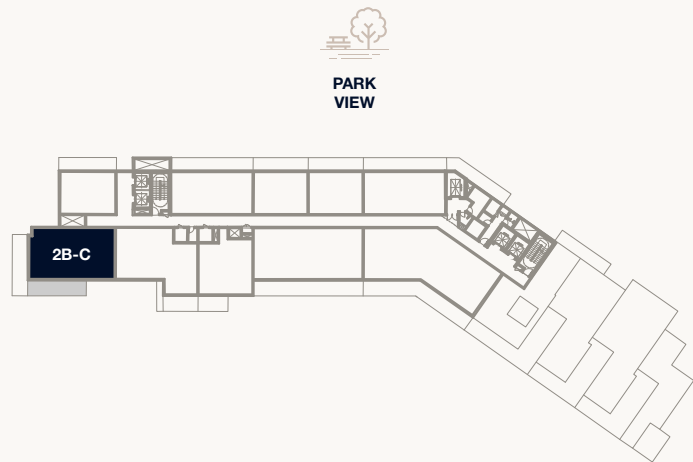
Internal Area	111.41 sq m	1,199.21 sq ft
Balcony Area	21.22 sq m	228.41 sq ft
Total Area	132.63 sq m	1,427.62 sq ft



Kempinski Residences
The Creek

DUBAI

Tower 2



PARK
VIEW



WILDLIFE SANCTUARY
VIEW



BURJ KHALIFA
VIEW



CREEK HARBOUR
VIEW

NORTH

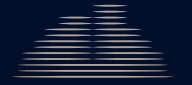


1. All dimensions are in imperial and metric, and measured to the structural elements and exclude wall finishes and construction tolerances. 2. All materials, dimensions, and drawings are approximate only. 3. Information is subject to change without notice, at developer's absolute discretion. 4. Actual area may vary from the stated area. 5. Balcony sizes may vary between units. 6. Drawings are not to scale. 7. All images used are for illustrative purposes only and do not represent the actual size, features, specifications, fittings, or furnishings. 8. The developer reserves the right to make revisions/alterations, at its absolute discretion, without any liability whatsoever.

2 BEDROOM – TYPE D

Floor 1

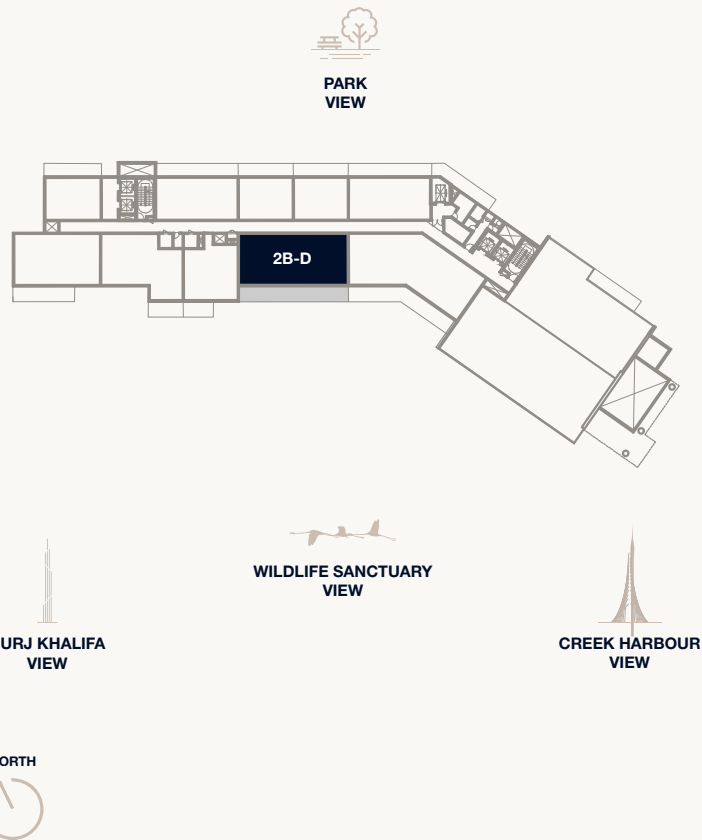
Internal Area	139.11 sq m	1,497.37 sq ft
Balcony Area	39.85 sq m	428.94 sq ft
Total Area	178.96 sq m	1,926.31 sq ft



Kempinski Residences
The Creek

DUBAI

Tower 2

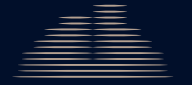


1. All dimensions are in imperial and metric, and measured to the structural elements and exclude wall finishes and construction tolerances. 2. All materials, dimensions, and drawings are approximate only. 3. Information is subject to change without notice, at developer's absolute discretion. 4. Actual area may vary from the stated area. 5. Balcony sizes may vary between units. 6. Drawings are not to scale. 7. All images used are for illustrative purposes only and do not represent the actual size, features, specifications, fittings, or furnishings. 8. The developer reserves the right to make revisions/alterations, at its absolute discretion, without any liability whatsoever.

2 BEDROOM – TYPE D

Floor 2-7

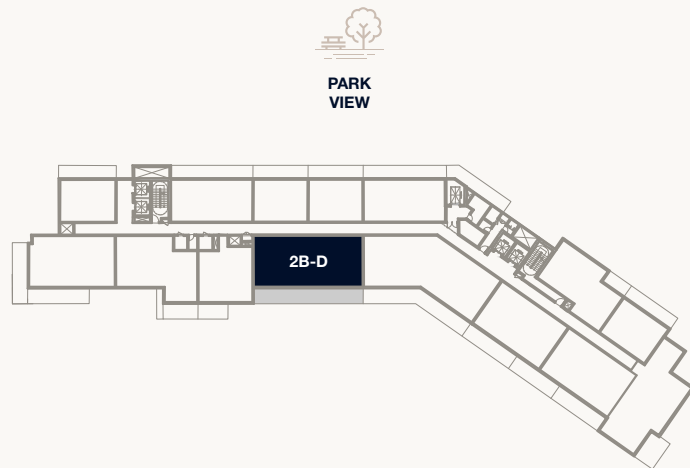
Internal Area	139.11 sq m	1,497.37 sq ft
Balcony Area	39.85 sq m	428.94 sq ft
Total Area	178.96 sq m	1,926.31 sq ft



Kempinski Residences
The Creek

DUBAI

Tower 2

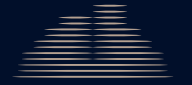


1. All dimensions are in imperial and metric, and measured to the structural elements and exclude wall finishes and construction tolerances. 2. All materials, dimensions, and drawings are approximate only. 3. Information is subject to change without notice, at developer's absolute discretion. 4. Actual area may vary from the stated area. 5. Balcony sizes may vary between units. 6. Drawings are not to scale. 7. All images used are for illustrative purposes only and do not represent the actual size, features, specifications, fittings, or furnishings. 8. The developer reserves the right to make revisions/alterations, at its absolute discretion, without any liability whatsoever.

2 BEDROOM – TYPE D

Floor 8-9

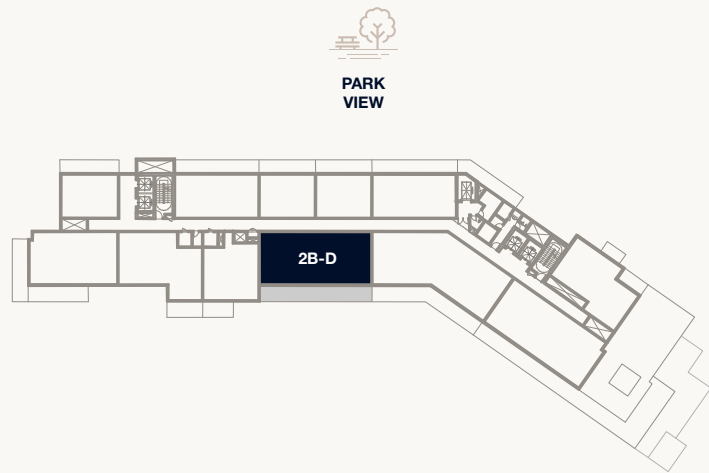
Internal Area	139.11 sq m	1,497.37 sq ft
Balcony Area	39.85 sq m	428.94 sq ft
Total Area	178.96 sq m	1,926.31 sq ft



Kempinski Residences
The Creek

DUBAI

Tower 2

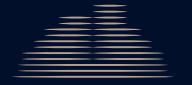


1. All dimensions are in imperial and metric, and measured to the structural elements and exclude wall finishes and construction tolerances. 2. All materials, dimensions, and drawings are approximate only. 3. Information is subject to change without notice, at developer's absolute discretion. 4. Actual area may vary from the stated area. 5. Balcony sizes may vary between units. 6. Drawings are not to scale. 7. All images used are for illustrative purposes only and do not represent the actual size, features, specifications, fittings, or furnishings. 8. The developer reserves the right to make revisions/alterations, at its absolute discretion, without any liability whatsoever.

2 BEDROOM – TYPE D

Floor 10-11

Internal Area	139.11 sq m	1,497.37 sq ft
Balcony Area	39.85 sq m	428.94 sq ft
Total Area	178.96 sq m	1,926.31 sq ft



Kempinski Residences
The Creek

DUBAI

Tower 2



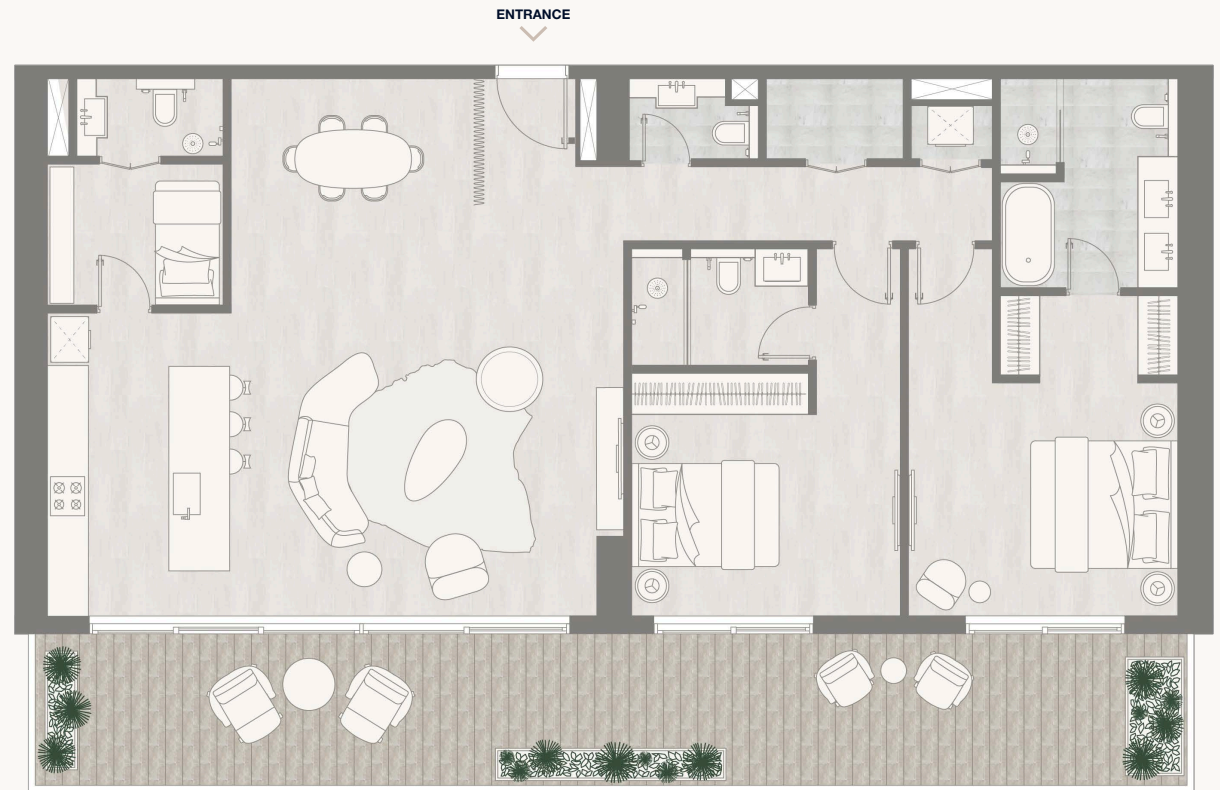
PARK
VIEW

WILDLIFE SANCTUARY
VIEW

CREEK HARBOUR
VIEW

BURJ KHALIFA
VIEW

NORTH

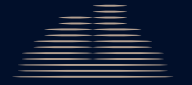


1. All dimensions are in imperial and metric, and measured to the structural elements and exclude wall finishes and construction tolerances. 2. All materials, dimensions, and drawings are approximate only. 3. Information is subject to change without notice, at developer's absolute discretion. 4. Actual area may vary from the stated area. 5. Balcony sizes may vary between units. 6. Drawings are not to scale. 7. All images used are for illustrative purposes only and do not represent the actual size, features, specifications, fittings, or furnishings. 8. The developer reserves the right to make revisions/alterations, at its absolute discretion, without any liability whatsoever.

2 BEDROOM – TYPE D

Floor 12-13

Internal Area	139.11 sq m	1,497.37 sq ft
Balcony Area	39.85 sq m	428.94 sq ft
Total Area	178.96 sq m	1,926.31 sq ft



Kempinski Residences
The Creek

DUBAI

Tower 2



PARK
VIEW

WILDLIFE SANCTUARY
VIEW

CREEK HARBOUR
VIEW

BURJ KHALIFA
VIEW

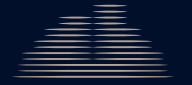


1. All dimensions are in imperial and metric, and measured to the structural elements and exclude wall finishes and construction tolerances. 2. All materials, dimensions, and drawings are approximate only. 3. Information is subject to change without notice, at developer's absolute discretion. 4. Actual area may vary from the stated area. 5. Balcony sizes may vary between units. 6. Drawings are not to scale. 7. All images used are for illustrative purposes only and do not represent the actual size, features, specifications, fittings, or furnishings. 8. The developer reserves the right to make revisions/alterations, at its absolute discretion, without any liability whatsoever.

3 BEDROOM – TYPE A

Floor 1

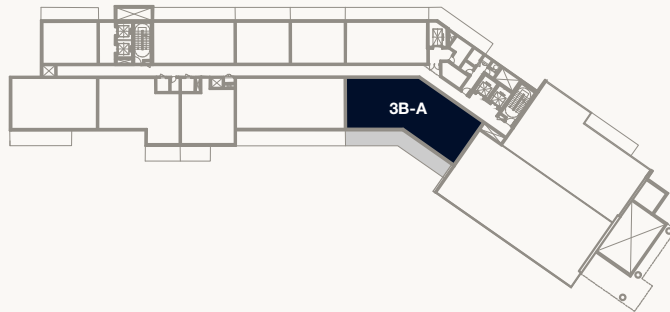
Internal Area	168.97 sq m	1,818.78 sq ft
Balcony Area	41.99 sq m	451.98 sq ft
Total Area	210.96 sq m	2,270.76 sq ft



Kempinski Residences
The Creek

DUBAI

Tower 2

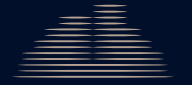


1. All dimensions are in imperial and metric, and measured to the structural elements and exclude wall finishes and construction tolerances. 2. All materials, dimensions, and drawings are approximate only. 3. Information is subject to change without notice, at developer's absolute discretion. 4. Actual area may vary from the stated area. 5. Balcony sizes may vary between units. 6. Drawings are not to scale. 7. All images used are for illustrative purposes only and do not represent the actual size, features, specifications, fittings, or furnishings. 8. The developer reserves the right to make revisions/alterations, at its absolute discretion, without any liability whatsoever.

3 BEDROOM – TYPE A

Floor 2–7

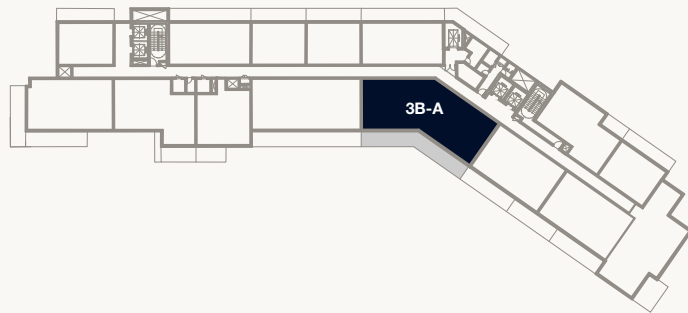
Internal Area	168.97 sq m	1,818.78 sq ft
Balcony Area	41.99 sq m	451.98 sq ft
Total Area	210.96 sq m	2,270.76 sq ft



Kempinski Residences
The Creek

DUBAI

Tower 2



NORTH

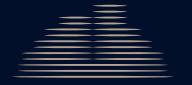


1. All dimensions are in imperial and metric, and measured to the structural elements and exclude wall finishes and construction tolerances. 2. All materials, dimensions, and drawings are approximate only. 3. Information is subject to change without notice, at developer's absolute discretion. 4. Actual area may vary from the stated area. 5. Balcony sizes may vary between units. 6. Drawings are not to scale. 7. All images used are for illustrative purposes only and do not represent the actual size, features, specifications, fittings, or furnishings. 8. The developer reserves the right to make revisions/alterations, at its absolute discretion, without any liability whatsoever.

3 BEDROOM – TYPE A

Floor 8–9

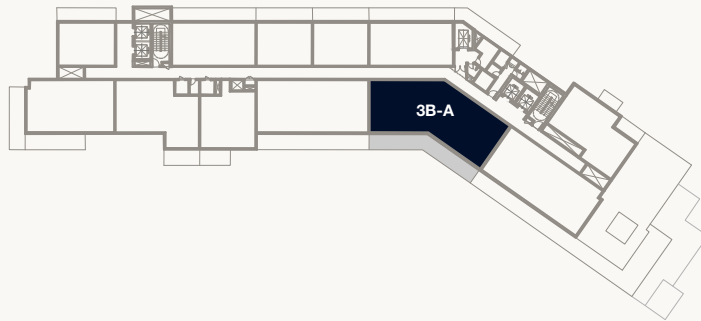
Internal Area	168.97 sq m	1,818.78 sq ft
Balcony Area	41.99 sq m	451.98 sq ft
Total Area	210.96 sq m	2,270.76 sq ft



Kempinski Residences
The Creek

DUBAI

Tower 2



NORTH

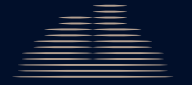


1. All dimensions are in imperial and metric, and measured to the structural elements and exclude wall finishes and construction tolerances. 2. All materials, dimensions, and drawings are approximate only. 3. Information is subject to change without notice, at developer's absolute discretion. 4. Actual area may vary from the stated area. 5. Balcony sizes may vary between units. 6. Drawings are not to scale. 7. All images used are for illustrative purposes only and do not represent the actual size, features, specifications, fittings, or furnishings. 8. The developer reserves the right to make revisions/alterations, at its absolute discretion, without any liability whatsoever.

3 BEDROOM – TYPE B

Floor 14

Internal Area	211.10 sq m	2,272.26 sq ft
Balcony Area	52.30 sq m	562.95 sq ft
Total Area	263.40 sq m	2,835.21 sq ft



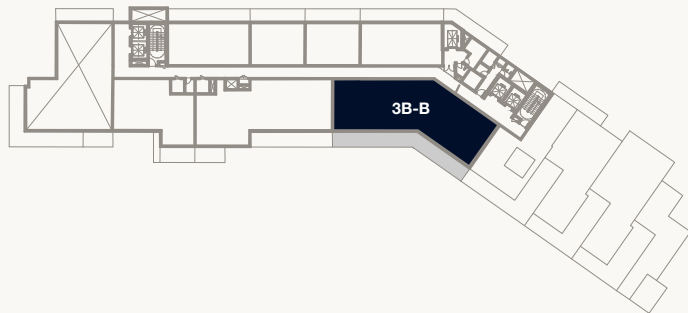
Kempinski Residences
The Creek

DUBAI

Tower 2



PARK
VIEW



3B-B



WILDLIFE SANCTUARY
VIEW



BURJ KHALIFA
VIEW



CREEK HARBOUR
VIEW

NORTH

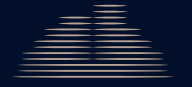


1. All dimensions are in imperial and metric, and measured to the structural elements and exclude wall finishes and construction tolerances. 2. All materials, dimensions, and drawings are approximate only. 3. Information is subject to change without notice, at developer's absolute discretion. 4. Actual area may vary from the stated area. 5. Balcony sizes may vary between units. 6. Drawings are not to scale. 7. All images used are for illustrative purposes only and do not represent the actual size, features, specifications, fittings, or furnishings. 8. The developer reserves the right to make revisions/alterations, at its absolute discretion, without any liability whatsoever.

3 BEDROOM – TYPE E

Floor 14

Internal Area	178.27 sq m	1,918.88 sq ft
Balcony Area	40.11 sq m	431.74 sq ft
Total Area	218.38 sq m	2,350.62 sq ft



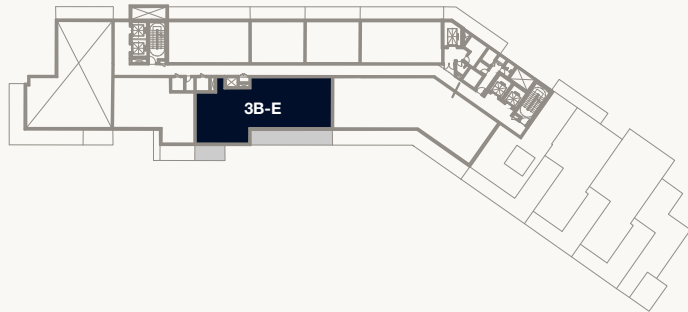
Kempinski Residences
The Creek

DUBAI

Tower 2



PARK
VIEW



WILDLIFE SANCTUARY
VIEW



BURJ KHALIFA
VIEW



CREEK HARBOUR
VIEW



NORTH

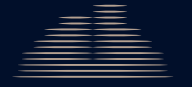


1. All dimensions are in imperial and metric, and measured to the structural elements and exclude wall finishes and construction tolerances. 2. All materials, dimensions, and drawings are approximate only. 3. Information is subject to change without notice, at developer's absolute discretion. 4. Actual area may vary from the stated area. 5. Balcony sizes may vary between units. 6. Drawings are not to scale. 7. All images used are for illustrative purposes only and do not represent the actual size, features, specifications, fittings, or furnishings. 8. The developer reserves the right to make revisions/alterations, at its absolute discretion, without any liability whatsoever.

3 BEDROOM DUPLEX – TYPE C

Floor 2 & 4 – Lower Floor

Internal Area	220.98 sq m	2,378.61 sq ft
Balcony/Terrace Area	20.35 sq m	219.05 sq ft
Total Area	241.33 sq m	2,597.66 sq ft



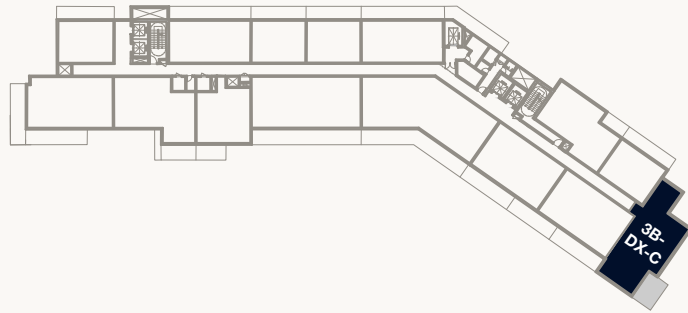
Kempinski Residences
The Creek

DUBAI

Tower 2



PARK
VIEW



WILDLIFE SANCTUARY
VIEW



BURJ KHALIFA
VIEW



CREEK HARBOUR
VIEW

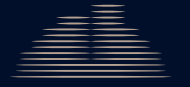
NORTH



1. All dimensions are in imperial and metric, and measured to the structural elements and exclude wall finishes and construction tolerances. 2. All materials, dimensions, and drawings are approximate only. 3. Information is subject to change without notice, at developer's absolute discretion. 4. Actual area may vary from the stated area. 5. Balcony sizes may vary between units. 6. Drawings are not to scale. 7. All images used are for illustrative purposes only and do not represent the actual size, features, specifications, fittings, or furnishings. 8. The developer reserves the right to make revisions/alterations, at its absolute discretion, without any liability whatsoever.

3 BEDROOM DUPLEX – TYPE C

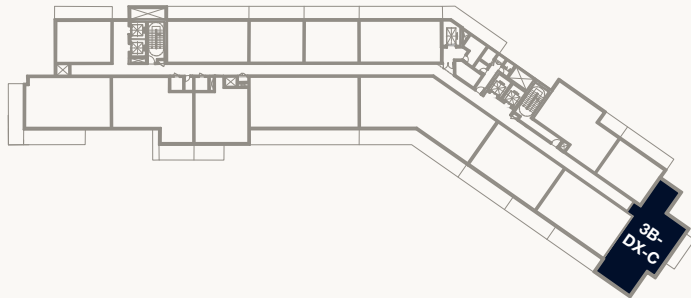
Floor 3 & 5 – Upper Floor



Kempinski Residences
The Creek

DUBAI

Tower 2

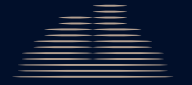


1. All dimensions are in imperial and metric, and measured to the structural elements and exclude wall finishes and construction tolerances. 2. All materials, dimensions, and drawings are approximate only. 3. Information is subject to change without notice, at developer's absolute discretion. 4. Actual area may vary from the stated area. 5. Balcony sizes may vary between units. 6. Drawings are not to scale. 7. All images used are for illustrative purposes only and do not represent the actual size, features, specifications, fittings, or furnishings. 8. The developer reserves the right to make revisions/alterations, at its absolute discretion, without any liability whatsoever.

4 BEDROOM DUPLEX – TYPE A

Floor 8 – Lower Floor

Internal Area	260.60 sq m	2,805.08 sq ft
Balcony/Terrace Area	174.38 sq m	1,877.01 sq ft
Total Area	434.98 sq m	4,682.09 sq ft



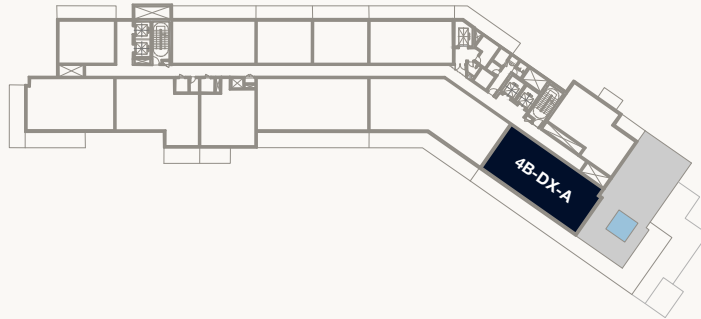
Kempinski Residences
The Creek

DUBAI

Tower 2



PARK
VIEW



WILDLIFE SANCTUARY
VIEW



CREEK HARBOUR
VIEW



BURJ KHALIFA
VIEW

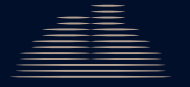
NORTH



1. All dimensions are in imperial and metric, and measured to the structural elements and exclude wall finishes and construction tolerances. 2. All materials, dimensions, and drawings are approximate only. 3. Information is subject to change without notice, at developer's absolute discretion. 4. Actual area may vary from the stated area. 5. Balcony sizes may vary between units. 6. Drawings are not to scale. 7. All images used are for illustrative purposes only and do not represent the actual size, features, specifications, fittings, or furnishings. 8. The developer reserves the right to make revisions/alterations, at its absolute discretion, without any liability whatsoever.

4 BEDROOM DUPLEX – TYPE A

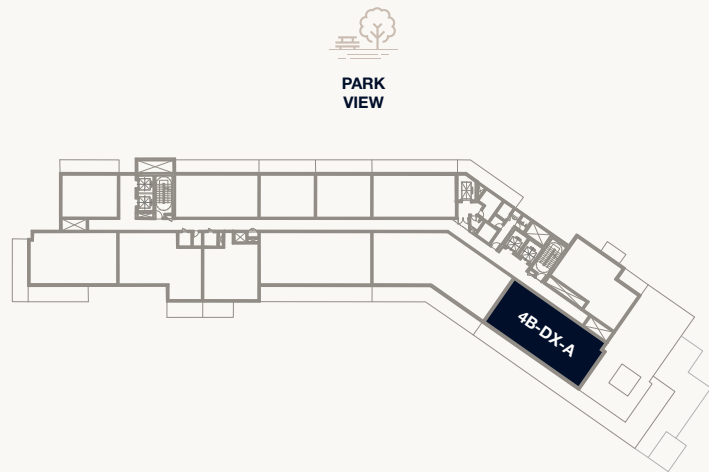
Floor 9 – Upper Floor



Kempinski Residences
The Creek

DUBAI

Tower 2



PARK
VIEW

4B-DX-A

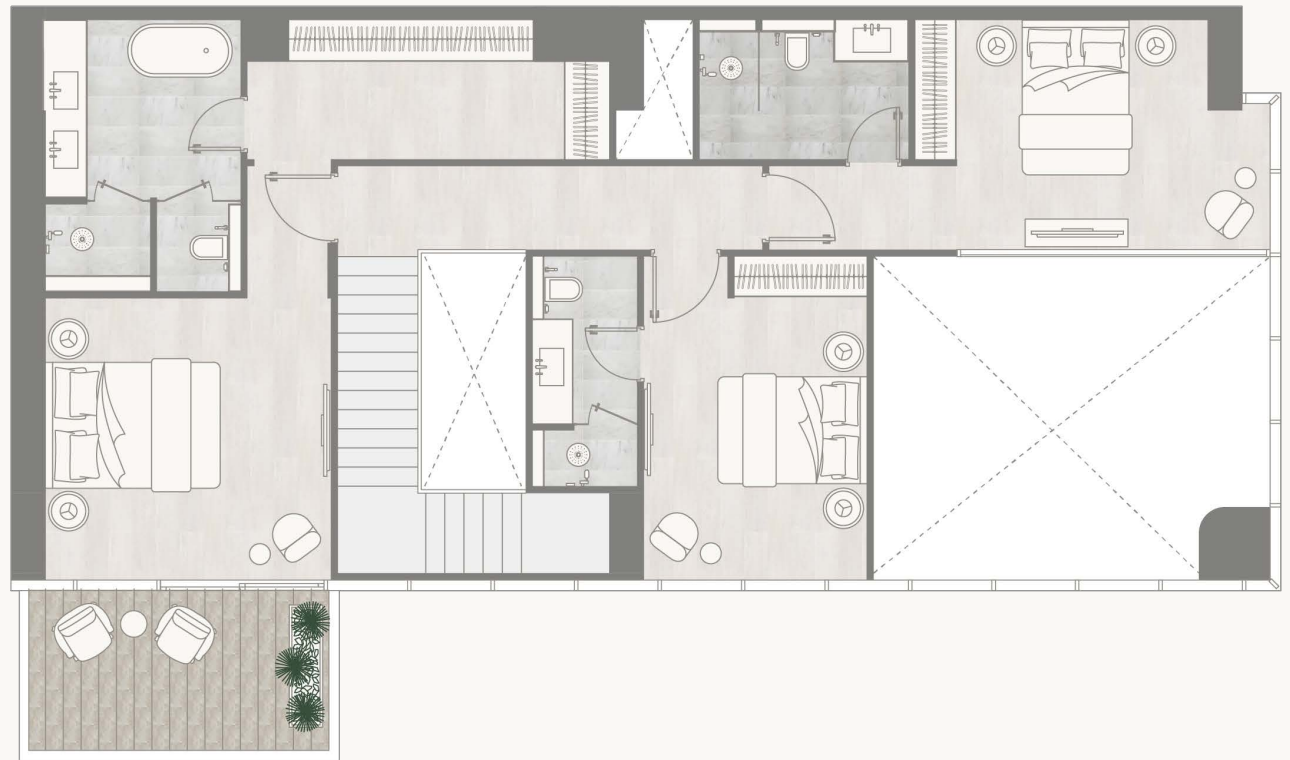
WILDLIFE SANCTUARY
VIEW



BURJ KHALIFA
VIEW



CREEK HARBOUR
VIEW



NORTH

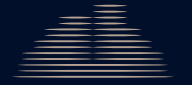


1. All dimensions are in imperial and metric, and measured to the structural elements and exclude wall finishes and construction tolerances. 2. All materials, dimensions, and drawings are approximate only. 3. Information is subject to change without notice, at developer's absolute discretion. 4. Actual area may vary from the stated area. 5. Balcony sizes may vary between units. 6. Drawings are not to scale. 7. All images used are for illustrative purposes only and do not represent the actual size, features, specifications, fittings, or furnishings. 8. The developer reserves the right to make revisions/alterations, at its absolute discretion, without any liability whatsoever.

4 BEDROOM DUPLEX – TYPE A

Floor 10 – Lower Floor

Internal Area	263.38 sq m	2,835.00 sq ft
Balcony/Terrace Area	174.32 sq m	1,876.36 sq ft
Total Area	437.70 sq m	4,711.36 sq ft



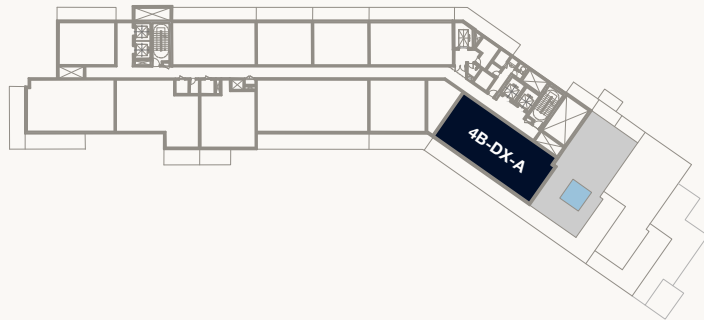
Kempinski Residences
The Creek

DUBAI

Tower 2



PARK
VIEW



WILDLIFE SANCTUARY
VIEW



CREEK HARBOUR
VIEW



BURJ KHALIFA
VIEW

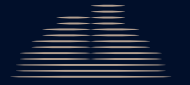
NORTH



1. All dimensions are in imperial and metric, and measured to the structural elements and exclude wall finishes and construction tolerances. 2. All materials, dimensions, and drawings are approximate only. 3. Information is subject to change without notice, at developer's absolute discretion. 4. Actual area may vary from the stated area. 5. Balcony sizes may vary between units. 6. Drawings are not to scale. 7. All images used are for illustrative purposes only and do not represent the actual size, features, specifications, fittings, or furnishings. 8. The developer reserves the right to make revisions/alterations, at its absolute discretion, without any liability whatsoever.

4 BEDROOM DUPLEX – TYPE A

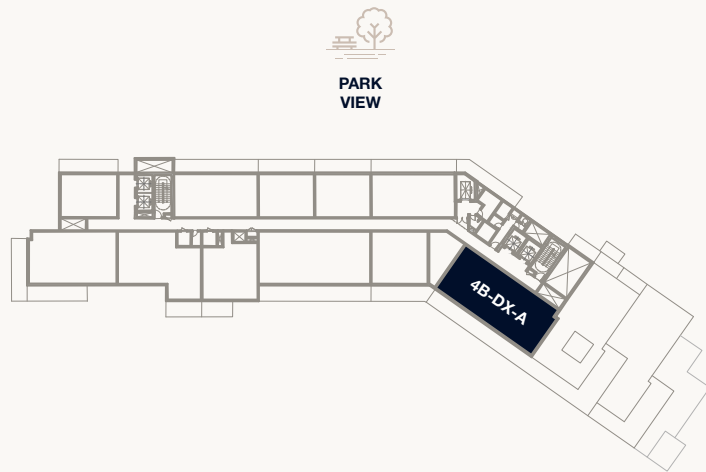
Floor 11 – Upper Floor



Kempinski Residences
The Creek

DUBAI

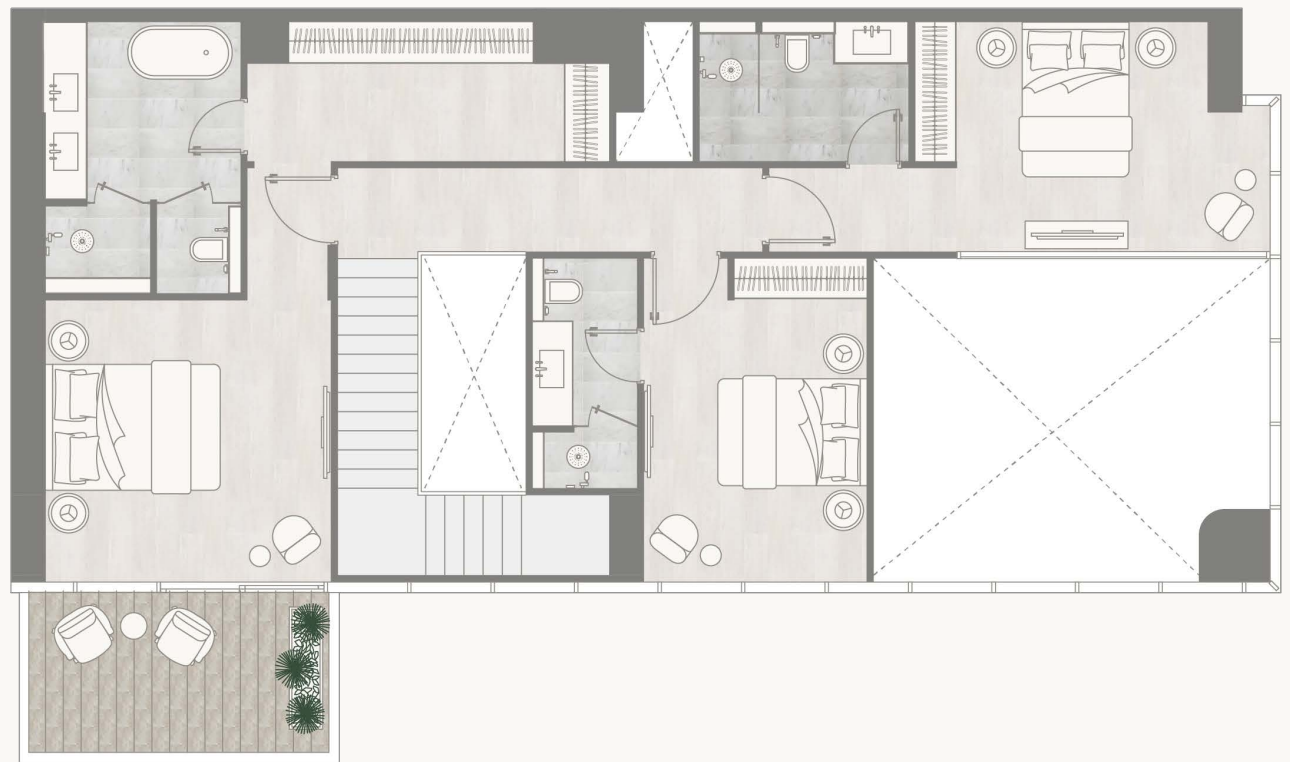
Tower 2



BURJ KHALIFA
VIEW



CREEK HARBOUR
VIEW

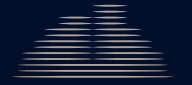


1. All dimensions are in imperial and metric, and measured to the structural elements and exclude wall finishes and construction tolerances. 2. All materials, dimensions, and drawings are approximate only. 3. Information is subject to change without notice, at developer's absolute discretion. 4. Actual area may vary from the stated area. 5. Balcony sizes may vary between units. 6. Drawings are not to scale. 7. All images used are for illustrative purposes only and do not represent the actual size, features, specifications, fittings, or furnishings. 8. The developer reserves the right to make revisions/alterations, at its absolute discretion, without any liability whatsoever.

4 BEDROOM DUPLEX – TYPE B

Floor 12 – Lower Floor

Internal Area	302.96 sq m	3,261.03 sq ft
Balcony/Terrace Area	174.17 sq m	1,874.75 sq ft
Total Area	477.13 sq m	5,135.78 sq ft



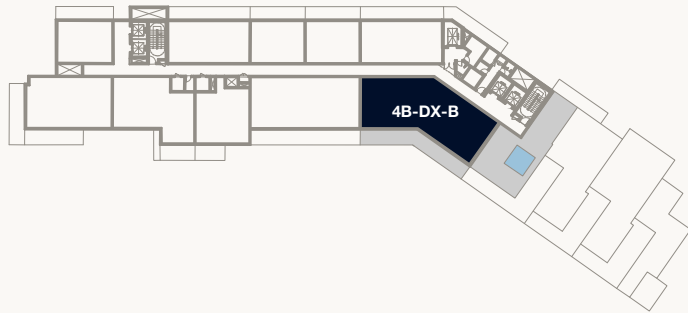
Kempinski Residences
The Creek

DUBAI

Tower 2



PARK
VIEW



4B-DX-B



WILDLIFE SANCTUARY
VIEW



BURJ KHALIFA
VIEW



CREEK HARBOUR
VIEW

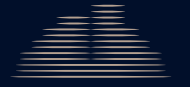
NORTH



1. All dimensions are in imperial and metric, and measured to the structural elements and exclude wall finishes and construction tolerances. 2. All materials, dimensions, and drawings are approximate only. 3. Information is subject to change without notice, at developer's absolute discretion. 4. Actual area may vary from the stated area. 5. Balcony sizes may vary between units. 6. Drawings are not to scale. 7. All images used are for illustrative purposes only and do not represent the actual size, features, specifications, fittings, or furnishings. 8. The developer reserves the right to make revisions/alterations, at its absolute discretion, without any liability whatsoever.

4 BEDROOM DUPLEX – TYPE B

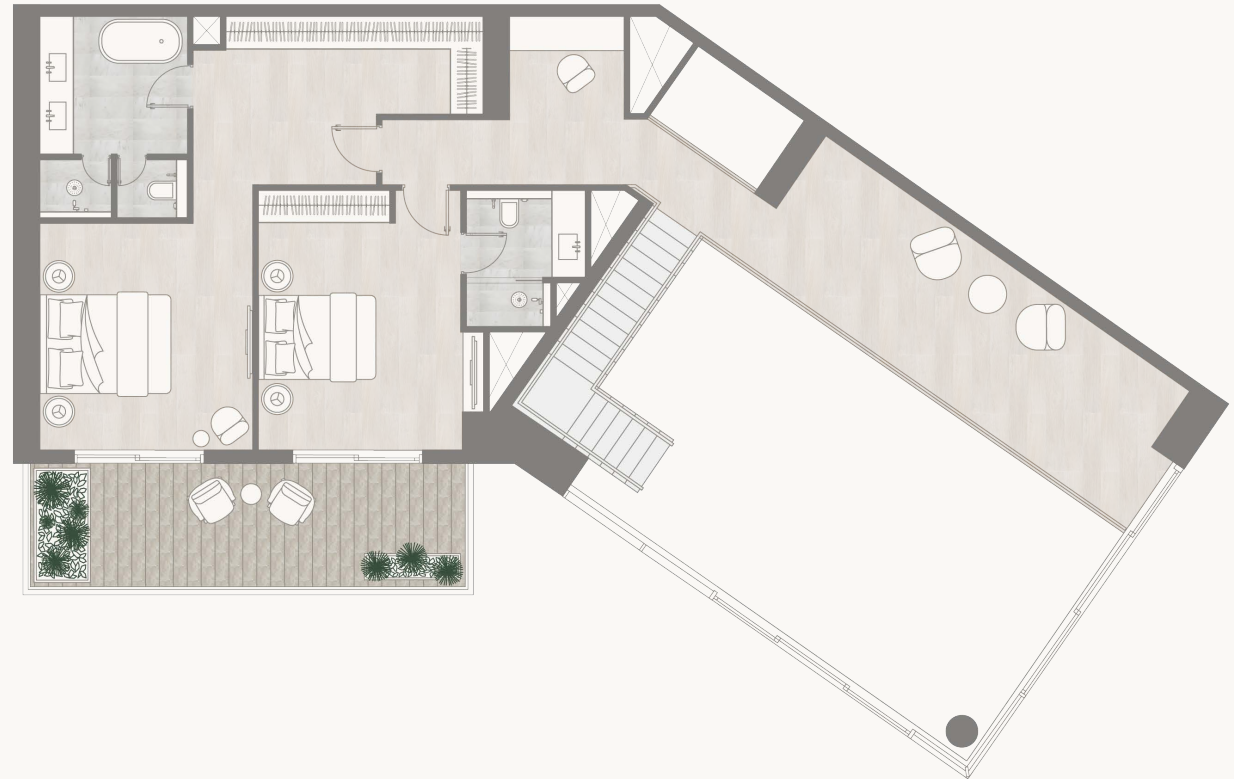
Floor 13 – Upper Floor



Kempinski Residences
The Creek

DUBAI

Tower 2



1. All dimensions are in imperial and metric, and measured to the structural elements and exclude wall finishes and construction tolerances. 2. All materials, dimensions, and drawings are approximate only. 3. Information is subject to change without notice, at developer's absolute discretion. 4. Actual area may vary from the stated area. 5. Balcony sizes may vary between units. 6. Drawings are not to scale. 7. All images used are for illustrative purposes only and do not represent the actual size, features, specifications, fittings, or furnishings. 8. The developer reserves the right to make revisions/alterations, at its absolute discretion, without any liability whatsoever.

