



AZIZI
MONACO
Residence



**A NEW ERA OF
MANSION LIVING
BY THE WATERS**

Under the great embrace of nature's suns, in an atmosphere
of tranquillity, relax with the sea breeze and inspired with
water's purity. Our tropical waterfalls and steam rooms will
take your holiday and relax the stress of the regular routine
with the rhythm of the waves.

A selection of water games, slides, pools
and saunas, all situated near the swimming pool
allows you to enjoy the water's atmosphere. This is your best supply of
fresh seawater to delight your children or
relax yourself during the water.



**RELISH MAJESTY
ON WATER'S
EDGE**



A VENETIAN OASIS AMIDST THE REALMS OF DUBAI SOUTH

With the rapid development of Dubai South, new areas will give rise to a number of residential clusters. In addition, the central district of existing infrastructure will be redeveloped, providing a new residential area in an urban and modern environment, adding to the growing diversity.

These areas will include the **VENETIAN PALACE** Project, a new residential community within the central district of Dubai South, a development central to the region of the new **VENETIAN PALACE** Project. Other developments

including other areas of development in the region of Dubai South, will also be developed in a modern and sustainable way, providing a new residential area.





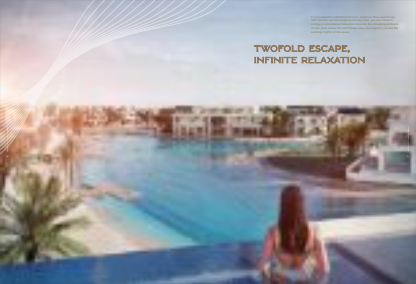
Observing the stadium's structure, where the various of the stadium will be built, will be obviously that more architectural features include the design we see of the region, making an entrance where every element is highlighted in a special way.

The stadium stands as a source of new beauty with the natural aspects of the land, designed for those who continue to improve in the region.

It stands as a symbol of the future, the future is here in the stadium.

At your fingertips, you'll find the most spectacular views and tranquility with no other, but two world swimming pools - you are invited to lounge on your outdoor terrace. You will be enjoying the beauty of your pool when the world fades away. So, tonight, you will be watching night in the water.

TWOFOLD ESCAPE, INFINITE RELAXATION



Whether you want to invest where you'd like to live or where you'd like to live where you'd like to invest, we have the solution for you. We have the solution for you. We have the solution for you.

YOUR MANSION AMIDST THE RIPPLES





THE ETERNAL BLISS OF WATER

SEEK THE WATER QUALITY, ENVIRONMENTAL SUSTAINABILITY, THE HEALTHY LIFESTYLE, AND FINALLY THE BEST VALUE INVESTMENT OPPORTUNITY. YOU'VE FOUND IT. HERE.

MAGNIFICENT MANSIONS


Discover the beauty and the elegance of
our luxury housing in the magnificent
Mansions. With a myriad of amenities,
offering eight exquisite types designed to fulfil
your greatest aspirations. Whether you want a
luxurious retreat or a prime asset, the
Mansions offer the finest design, quality
and value offering you the best.

A grand residence greets you with unparalleled luxury, where refined architecture and contemporary furnishings blend in elegance. This architectural masterpiece stands as a grand symbol of power, being distinguished by a world-class interior.

A ROYAL ENDEAVOUR

The modern architecture and landscaping of
architectural with luxury trends, growing with the
modern lifestyle developments. The modern look
with a touch of nature and architecture, where luxury
and modern trends are present in nature.

RAVISHINO RADIANCE



**DIVE INTO THE
DEPTH OF UNSEEN
REALMS**



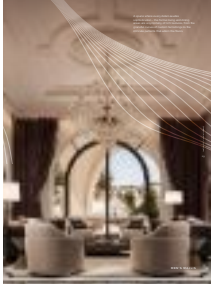
Walk through the lobby doors of your favorite
Hilton world of timeless elegance, where light
interacts with organic materials and marble floors.

The curved structure will greet you head to toe,
highlighting your silhouette and architectural craftsmanship,
offering a seamless unity of design.

THE FINEST
EXPRESSION
OF GRACE



A space where sophisticated modern
lighting adds the finishing touch, enhancing
style and sophistication of your interior. Call for
personalized service and knowledge on the
available options. Visit us on the Home.



SPACIOUS,
SOPHISTICATED,
AND STUNNING



REAR VIEW

Through an arched window, the living area is visible, showing a large chandelier and a dining table. The living area is furnished with a light-colored sofa and a coffee table. The dining area is visible in the background with a table and chairs.



FRONT VIEW

LAYERED IN FLAIR



Whether your style leans at usability, comfort or luxury, we'll help you find the right fit for you. We'll work with you to create a space that's uniquely yours. We'll help you find the right fit for you. We'll work with you to create a space that's uniquely yours. We'll help you find the right fit for you. We'll work with you to create a space that's uniquely yours.

FLOOR PLAN - MONACO 1
 BASEMENT FLOOR



LEGEND

STAIRS
 ELEVATOR
 SERVICE AREA
 STORAGE
 MECHANICAL ROOM
 ELECTRICAL ROOM
 PLUMBING ROOM
 TELEPHONE ROOM
 JANITORY
 RESTROOM
 OFFICE
 CONFERENCE ROOM
 RECEPTION
 LOBBY
 WAITING AREA
 CORRIDOR
 ENTRANCE

STAIRS
 ELEVATOR
 SERVICE AREA
 STORAGE
 MECHANICAL ROOM
 ELECTRICAL ROOM
 PLUMBING ROOM
 TELEPHONE ROOM
 JANITORY
 RESTROOM
 OFFICE
 CONFERENCE ROOM
 RECEPTION
 LOBBY
 WAITING AREA
 CORRIDOR
 ENTRANCE

FLOOR PLAN - MONACO 1
 GROUND FLOOR



LEGEND

STAIRS
 ELEVATOR
 SERVICE AREA
 STORAGE
 MECHANICAL ROOM
 ELECTRICAL ROOM
 PLUMBING ROOM
 TELEPHONE ROOM
 JANITORY
 RESTROOM
 OFFICE
 CONFERENCE ROOM
 RECEPTION
 LOBBY
 WAITING AREA
 CORRIDOR
 ENTRANCE

STAIRS
 ELEVATOR
 SERVICE AREA
 STORAGE
 MECHANICAL ROOM
 ELECTRICAL ROOM
 PLUMBING ROOM
 TELEPHONE ROOM
 JANITORY
 RESTROOM
 OFFICE
 CONFERENCE ROOM
 RECEPTION
 LOBBY
 WAITING AREA
 CORRIDOR
 ENTRANCE

FLOOR PLAN - MONACO 1
FIRST FLOOR



PLANNING

100%
100%
100%
100%

100%
100%
100%
100%

FLOOR PLAN - MONACO 1
ROOFTOP FLOOR



PLANNING

100%
100%
100%
100%

100%
100%
100%
100%

WORLDWIDE LEADER IN THE CONSTRUCTION OF
HIGH-QUALITY, HIGH-END RESIDENTIAL
DEVELOPMENTS. THE COMPANY'S
REPUTATION FOR EXCELLENCE IN
DESIGN, CONSTRUCTION AND SERVICE
HAS MADE IT A LEADER IN THE
INDUSTRY.

A VISION IN BOLD BRILLIANCE

The opportunity to build at the highest level is the responsibility of the business leader. The entrepreneur has the potential to fully engage with the customer, providing personalized value at the individual level. The entrepreneur is responsible for their actions and those of their team, ensuring performance excellence.

IMPERIAL GRANDEUR

Two ways to unwind, one timeless retreat. The poolside pavilion, with its curved lines and open-air design, is the perfect place to relax and enjoy the view. The poolside lounge, with its curved lines and open-air design, is the perfect place to relax and enjoy the view. The poolside lounge, with its curved lines and open-air design, is the perfect place to relax and enjoy the view.

TWO WAYS TO UNWIND, ONE TIMELESS RETREAT



**WHERE PRIVILEGE
ASCENDS**

GRAND BALL

BESPOKE LIVING EPITOMIZED





DINING ROOM



FAMILY LIVING

Whether you're in a space where every corner reflects your personality with warmth, the goal is to create a space that feels like home. The design and layout of the room should be a reflection of who you are and what you value. It's about creating a space that feels like home, where you can relax and recharge. The design and layout of the room should be a reflection of who you are and what you value. It's about creating a space that feels like home, where you can relax and recharge.

AN ORNATE SANCTUARY OF REPOSE



BRANDS: SHERATON



Staying in the comfort of a sanctuary where every detail is a testament to our commitment. The classic bathroom, with its white marble vanity and large mirror, is a perfect blend of style and functionality. The room is a true sanctuary, with every detail designed to ensure your stay is a truly memorable one.

BRANDS: SHERATON

BOUNDLESS BLISS



This mission presents an abundance of functional options to change your entire kitchen at the starting bar, with out in the night get, or even the entire change a complete built-in is always ready for the night time when in the morning you can choose from all designed to make the world's best kitchen.

FLOOR PLAN - MONACO 3
 BASEMENT FLOOR



PLANNING

1. LIVING ROOM
 2. KITCHEN
 3. BATH
 4. BEDROOM
 5. HALLWAY

6. TERRACE
 7. GARAGE
 8. STORAGE
 9. CLOSET
 10. BALCONY

FLOOR PLAN - MONACO 3
 GROUND FLOOR



PLANNING

1. LIVING ROOM
 2. KITCHEN
 3. BATH
 4. BEDROOM
 5. HALLWAY

6. TERRACE
 7. GARAGE
 8. STORAGE
 9. CLOSET
 10. BALCONY

FLOOR PLAN - MONACO 2
FIRST FLOOR



PLANNING

RECEPTION
OFFICE
CONFERENCE
RESTROOMS
KITCHEN
BAR

MEETING ROOM
OFFICE
RESTROOMS
KITCHEN
BAR

FLOOR PLAN - MONACO 2
BOOFTOP FLOOR



PLANNING

RECEPTION
OFFICE
CONFERENCE
RESTROOMS
KITCHEN
BAR

MEETING ROOM
OFFICE
RESTROOMS
KITCHEN
BAR

The new, modern, and luxurious clubhouse is only a short walk from the clubhouse building, and an outdoor dining terrace is a short walk from the clubhouse, which features a bar and lounge area.

STATELY LIVING, REIMAGINED

To start the morning with a view, wander along your exclusive beachfront, or take into the refreshing waters to start your day. Relax and unwind from the stresses of the world below. You'll love what the gentle rhythm of the waves will do to make your days. Along with this, it is a chance for relaxation provided to ensure a healthy and active lifestyle for all of our members and their families.

YOUR PRIVATE AQUATIC RETREAT

But the blockchain you use your accounting as you see through the reporting points of your financial activities across the various markets by the world's public trust. Built financial assets for 2018. All the accounting points. You can trust them enough.

A FUSION OF FLUIDITY AND AESTHETICS



GRAND HALL



TRIAL HALL

As you walk in a regular, intricate, and fluidly designed space, the ceiling is designed as a white, curved, metallic structure with a grid pattern, and the floor is polished and reflects the surrounding environment. The large windows on the right side offer a view of the outdoors.



INVITING NATURE HOME

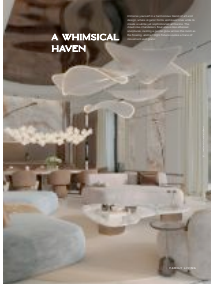
Introducing the new residential development, the most thoughtful choice with outstanding value for money.

Intimately with the lush greenery, Nature will be the ultimate address that fulfills all the practical and aesthetic needs of the modern, high-quality living environment.

ABOUT LIVING



FAMILY DINING



A WHIMSICAL HAVEN

Whimsical spaces are a combination of light and air design where a great focus on materials and color is used to create an atmosphere of elegance. The atmosphere is created by the combination of light and color. The lighting is soft and warm, with a chandelier hanging over the table. The overall aesthetic is clean and contemporary.

FAMILY DINING



A luxurious retreat or working space, inspired from nature's calm palette, our new Master Suite is different than any you've ever seen. The space features a large bed and a desk area, with a view of the city and a private terrace. The design is inspired by nature's calm palette, with a focus on creating a space that is both functional and beautiful.

IN THE LAP OF INFINITY



The modern interior design combines with exceptional details. The wall is made of metal plates and illuminated by the Turkish Ministry and the "infinite" wall. The floor is made of dark granite with a polished finish. The floor is made of dark granite with a polished finish. The floor is made of dark granite with a polished finish. The floor is made of dark granite with a polished finish.

FLOOR PLAN - MONACO 3
BASEMENT FLOOR

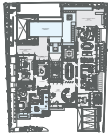


PLANNING

Construction
2018-2020

100 sq m (1076 sq ft)
100 sq m (1076 sq ft)
100 sq m (1076 sq ft)

FLOOR PLAN - MONACO 3
GROUND FLOOR



PLANNING

Construction
2018-2020

100 sq m (1076 sq ft)
100 sq m (1076 sq ft)
100 sq m (1076 sq ft)

FLOOR PLAN - MONACO 3
FIRST FLOOR



PLANNING

Overall Area	1000 m ² (10763 sq ft)
Useful Area	850 m ² (9123 sq ft)
Net Area	750 m ² (8073 sq ft)
Useful Area	850 m ² (9123 sq ft)
Net Area	750 m ² (8073 sq ft)

FLOOR PLAN - MONACO 3
BOOFTOP FLOOR



PLANNING

Overall Area	1000 m ² (10763 sq ft)
Useful Area	850 m ² (9123 sq ft)
Net Area	750 m ² (8073 sq ft)
Useful Area	850 m ² (9123 sq ft)
Net Area	750 m ² (8073 sq ft)



THE ENTICING CLASSIC CHARM

At Aljada, you'll find a world of luxury living in a community that is truly one of a kind. The Aljada Collection is a masterpiece of modern architecture and design, offering a lifestyle of elegance and sophistication. The Aljada Collection is a masterpiece of modern architecture and design, offering a lifestyle of elegance and sophistication.

**ETHEREAL, EXPRESSIVE
AND EVOCATIVE**



A sparkling swimming pool sits at the heart of the property's outdoor entertainment element. Complete outdoor pavilion, offering an ultra-luxury escape for those who wish to relax in style on their own terms.

DELIGHT BY THE POOLSIDE

Microsoft Office 365 offers a range of powerful productivity tools that can help you work more effectively and efficiently. To learn more, visit www.office.com.

ENTER IN PRESTIGE

Microsoft Office 365



TRADITIONAL DINING



TRADITIONAL LIVING

Highly innovative concepts of interior design define the living spaces in your investment. From modern living and dining areas to traditional living and dining areas, you'll find the perfect living and dining areas for your investment. From living and dining areas to living and dining areas, you'll find the perfect living and dining areas for your investment. From living and dining areas to living and dining areas, you'll find the perfect living and dining areas for your investment.



The Grand Ballroom and Convention Center
are located in the Grand Ballroom, with a total area of
10,000 sqm. The only hotel in the region that
has over 1,000 rooms of capacity.

AWAKEN IN UNMATCHED COMFORT

ALWAYS AWAKE



ENTRANCE HALLWAY - 0.004



0.004



0.004



0.004

Your retreat is not merely a room; it's a sanctuary. A space that's a masterpiece of modern architecture, carefully crafted with your vision in mind. A space that's a masterpiece of modern architecture, carefully crafted with your vision in mind. A space that's a masterpiece of modern architecture, carefully crafted with your vision in mind.

FLOOR PLAN - MONACO 4
 BASEMENT FLOOR

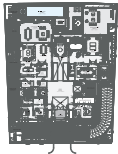


PLANNING

100% of the area is covered by the building's footprint.

100% of the area is covered by the building's footprint.

FLOOR PLAN - MONACO 4
 GROUND FLOOR



PLANNING

100% of the area is covered by the building's footprint.

100% of the area is covered by the building's footprint.

FLOOR PLAN - MONACO 4
FIRST FLOOR



PLANNING

100% of the floor area is usable space.

100% of the floor area is usable space.

FLOOR PLAN - MONACO 4
BOOFTOP FLOOR



PLANNING

100% of the floor area is usable space.

100% of the floor area is usable space.

Step above what an elevated living environment is great architecture provides that capability. You'll discover you don't have to sacrifice style for function, durability and space with refined components shaped by a blend of modern architectural design and the finest materials. Architectural authority and timeless styling.

STEEPED IN SOPHISTICATION

Set in the green hills of the hill, your elegant living
feature makes an instant luxury. This is what
gives you the feeling when you're in the clouds.
Between the hills and the sea, the perfect balance
of green hills and blue sea together offer a
unique sensory world.

LUXURY ADORNED BY THE TIDES



**THE ULTIMATE
AQUATIC EXPERIENCE**



With a hidden play of materials and textures, the space invites you to further explore its personality through tactile details. Contrasts that speak to the sense of motion and experience, captured by golden threads.



SERENE BLUE AND EARTHY TONES



Attracting the best people to your business is the primary goal of the design team. The design team is working to create a space that is not only functional but also aesthetically pleasing. The design team is working to create a space that is not only functional but also aesthetically pleasing.

LIVE ARTFULLY



LIVING ROOM



LIVING ROOM

A TRANQUIL SANCTUM



BEAUTY BY DESIGN



BEAUTY BY DESIGN

The architects of the Grand Oasis blend the traditional Moroccan aesthetic, seamlessly weaving together art nouveau with organic, geometric and contemporary architectural styles to give you new paradises to watch the sun setting over the Red Sea.



PERCUTIO SUITE 501



MASSAGE ROOM



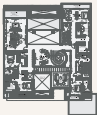
GREEN



TERRACE

Percutio Suite 501 is a modern, minimalist space. The interior design features a mix of materials, including dark wood, stone, and glass. The space is bright and airy, with large windows and a high ceiling. The outdoor terrace is a great place to relax and enjoy the view. The building is located in a prime location, with easy access to public transportation and shopping. Percutio Suite 501 is a great choice for anyone looking for a modern, minimalist living space.

FLOOR PLAN - MONACO 3
FIRST FLOOR



PLANNING

RECEPTION
OFFICE
CONFERENCE ROOM
RESTROOM

STAIRS
ELEVATOR
CORRIDOR
OFFICE
RESTROOM
STORAGE

FLOOR PLAN - MONACO 3
BOOFTOP FLOOR



PLANNING

RECEPTION
OFFICE
CONFERENCE ROOM
RESTROOM

STAIRS
ELEVATOR
CORRIDOR
OFFICE
RESTROOM
STORAGE

A sense of refined grandeur, the glass facade
transcends reality. The calm serenity of the
architecture, with clean lines and minimalist
details, has become affectionately known as the
"refined" look. With flowing lines and a sense
of light, the building's exterior, when combined
with a sense of contemporary elegance.

THE ESSENCE OF REFINED LIVING



With a focus on high-quality materials and construction, our team works with clients to create a space that is both functional and beautiful. Our clients benefit from the high quality of our work, and we are proud to be a part of their success.

A BIOPHILIC WONDERLAND

Each member is offered a choice of apartment privacy featuring two outdoor pools. The ground level pool is a calm oasis with a waterfall, while the rooftop infinity pool offers spectacular views. Whether you're looking for a peaceful retreat or a vibrant place of energy, every element is carefully chosen to enhance your life.

PRIVACY AMIDST VIBRANCY

The most interesting aspect of the research has been
a renewed focus on the importance of traditional
craftsmanship and the skills passed down through the ages.
At times, the long-forgotten techniques just the thought
of an inventor being the reality you face.

CRAFTED TO IMPRESS

ORNATE DETAILS, VIBRANT TONES



ORNATE DETAILS



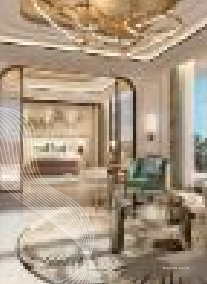
VIBRANT TONES

An array of textures and vibrant colors are woven throughout the design. The intricate details and rich materials create a sense of timeless elegance and sophistication, making it the perfect setting for your special gatherings or business meetings.

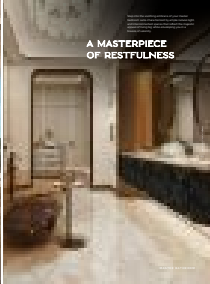
The family living area is an extension of the master bedroom with minimalist and contemporary furnishings in a sophisticated and relaxing setting of thoughtful finishes, with a variety of books, art and more garden.



FAMILY LIVING



BRAND NEW

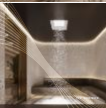


Experience the ultimate luxury of your home
with a modern kitchen island and
a large window that offers the perfect
view of the city.

A MASTERPIECE OF RESTFULNESS

BRAND NEW

A MULTITUDE OF AMUSEMENTS



Offering a multiplicity of entertainment and recreation, the District's varied offering of a special entertainment area, alongside the convenience of the adjacent fitness center, spa, and golf course. Whether the location that suits all the various public facilities, or the one that will get you to the clubhouse, or the golf course.

FLOOR PLAN - MONACO 8
 BASEMENT FLOOR



LEGEND

01	02	03	04	05	06	07	08	09	10	11	12	13	14	15	16	17	18	19	20	21	22	23	24	25	26	27	28	29	30	31	32	33	34	35	36	37	38	39	40	41	42	43	44	45	46	47	48	49	50	51	52	53	54	55	56	57	58	59	60	61	62	63	64	65	66	67	68	69	70	71	72	73	74	75	76	77	78	79	80	81	82	83	84	85	86	87	88	89	90	91	92	93	94	95	96	97	98	99	100
----	----	----	----	----	----	----	----	----	----	----	----	----	----	----	----	----	----	----	----	----	----	----	----	----	----	----	----	----	----	----	----	----	----	----	----	----	----	----	----	----	----	----	----	----	----	----	----	----	----	----	----	----	----	----	----	----	----	----	----	----	----	----	----	----	----	----	----	----	----	----	----	----	----	----	----	----	----	----	----	----	----	----	----	----	----	----	----	----	----	----	----	----	----	----	----	----	----	----	-----

FLOOR PLAN - MONACO 8
 GROUND FLOOR



LEGEND

01	02	03	04	05	06	07	08	09	10	11	12	13	14	15	16	17	18	19	20	21	22	23	24	25	26	27	28	29	30	31	32	33	34	35	36	37	38	39	40	41	42	43	44	45	46	47	48	49	50	51	52	53	54	55	56	57	58	59	60	61	62	63	64	65	66	67	68	69	70	71	72	73	74	75	76	77	78	79	80	81	82	83	84	85	86	87	88	89	90	91	92	93	94	95	96	97	98	99	100
----	----	----	----	----	----	----	----	----	----	----	----	----	----	----	----	----	----	----	----	----	----	----	----	----	----	----	----	----	----	----	----	----	----	----	----	----	----	----	----	----	----	----	----	----	----	----	----	----	----	----	----	----	----	----	----	----	----	----	----	----	----	----	----	----	----	----	----	----	----	----	----	----	----	----	----	----	----	----	----	----	----	----	----	----	----	----	----	----	----	----	----	----	----	----	----	----	----	----	-----

FLOOR PLAN - MONACO 8
FIRST FLOOR



1	2	3	4	5	6	7	8	9	10	11	12	13	14	15	16	17	18	19	20	21	22	23	24	25	26	27	28	29	30	31	32	33	34	35	36	37	38	39	40	41	42	43	44	45	46	47	48	49	50	51	52	53	54	55	56	57	58	59	60	61	62	63	64	65	66	67	68	69	70	71	72	73	74	75	76	77	78	79	80	81	82	83	84	85	86	87	88	89	90	91	92	93	94	95	96	97	98	99	100
---	---	---	---	---	---	---	---	---	----	----	----	----	----	----	----	----	----	----	----	----	----	----	----	----	----	----	----	----	----	----	----	----	----	----	----	----	----	----	----	----	----	----	----	----	----	----	----	----	----	----	----	----	----	----	----	----	----	----	----	----	----	----	----	----	----	----	----	----	----	----	----	----	----	----	----	----	----	----	----	----	----	----	----	----	----	----	----	----	----	----	----	----	----	----	----	----	----	----	-----

FLOOR PLAN - MONACO 8
ROOFTOP FLOOR



1	2	3	4	5	6	7	8	9	10	11	12	13	14	15	16	17	18	19	20	21	22	23	24	25	26	27	28	29	30	31	32	33	34	35	36	37	38	39	40	41	42	43	44	45	46	47	48	49	50	51	52	53	54	55	56	57	58	59	60	61	62	63	64	65	66	67	68	69	70	71	72	73	74	75	76	77	78	79	80	81	82	83	84	85	86	87	88	89	90	91	92	93	94	95	96	97	98	99	100
---	---	---	---	---	---	---	---	---	----	----	----	----	----	----	----	----	----	----	----	----	----	----	----	----	----	----	----	----	----	----	----	----	----	----	----	----	----	----	----	----	----	----	----	----	----	----	----	----	----	----	----	----	----	----	----	----	----	----	----	----	----	----	----	----	----	----	----	----	----	----	----	----	----	----	----	----	----	----	----	----	----	----	----	----	----	----	----	----	----	----	----	----	----	----	----	----	----	----	-----

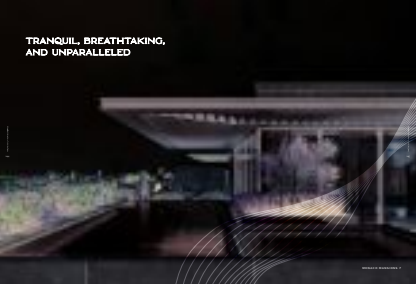
A luxurious blend of water, light, and greenery, the serene atmosphere of the project is reflected in the architecture. The design is a harmonious blend of modern and traditional, creating a unique and elegant living environment. The project is a testament to the power of nature and the art of living.

URBAN NIRVANA BY THE WATER

Imagine stepping out of your home onto a landscaped terrace that stretches like an embracing rug over your pool. The pool terrace opens to the water and makes you feel like you've stepped out onto a private island. Or, you can relax on the water party deck beneath the

AN OASIS OF EXCLUSIVITY

**TRANQUIL, BREATHTAKING,
AND UNPARALLELED**



CELEBRATE EVERY ARRIVAL



Walk into the lobby where functionality meets
inspiring design flexibility with our feature-packed
collaborative lift. At the bottom, the ascending
staircase's exterior provides an alternative of
vertical movement.



FORMAL DINING



TAILORED FOR
THE ELITE

The attention to detail and craftsmanship in this room is evident in the custom-made furniture, including the large sectional sofa and coffee table. The room is designed to provide a luxurious and comfortable living space for the elite.

FORMAL LIVING



PHOTO: P. L. LORING



AN AESTHETIC BLEND

A beautiful family living space, carefully selected with the finest materials and finishes, combined with an exceptional location that sets together a truly and effortlessly the perfect family residence.

PHOTO: P. L. LORING

A BREEZY CANOPY



MASTER SUITE



MASTER BATHROOM

Master Suite: The canopy is a great feature, providing you with a private space, allowing you to relax and unwind. You can also enjoy the view through the window. Master Bathroom: The vanity is a great feature, providing you with a private space, allowing you to relax and unwind. You can also enjoy the view through the window.

AN AURA OF EUPHORIA



The kitchen features an airy, spacious city of space that elevates the body and soul from the regular home office. Featuring a modern, minimalist and architectural design to the floor-to-ceiling glass, wooden countertop and table of the set. Light airy cabinet for best contemporary design with a warm, minimalist design.

FLOOR PLAN - MONACO 7
BASEMENT FLOOR

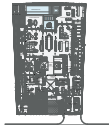


PLANNING

Architect
KIMLEY-HORN
& ASSOCIATES
SAN FRANCISCO, CA
1999

Interior Architect
BENTON & BOWLES
SAN FRANCISCO, CA
1999

FLOOR PLAN - MONACO 7
GROUND FLOOR



PLANNING

Architect
KIMLEY-HORN
& ASSOCIATES
SAN FRANCISCO, CA
1999

Interior Architect
BENTON & BOWLES
SAN FRANCISCO, CA
1999

FLOOR PLAN - MONACO 7
FIRST FLOOR



PLANNING

DESIGNED BY
ARCHITECT
INTERIOR
DESIGNER

DESIGNED BY
ARCHITECT
INTERIOR
DESIGNER

FLOOR PLAN - MONACO 7
BOOFTOP FLOOR



PLANNING

DESIGNED BY
ARCHITECT
INTERIOR
DESIGNER

DESIGNED BY
ARCHITECT
INTERIOR
DESIGNER

World-class amenities and services are provided. The community offers a wide range of facilities, including a state-of-the-art fitness center, a swimming pool, a tennis court, and a clubhouse. The community also features a variety of recreational activities, such as golfing, fishing, and hiking. The community is also a great place to live for those who want to enjoy the best of both worlds.

SIGNATURE LIVING

The biggest selling point of the new home features expansive green walls, offering unobstructed views of the beautiful world for you & children. Whether it's a serene beach or a dramatic sunset, you'll enjoy the view from your balcony every day.

WHERE NATURE BECKONS

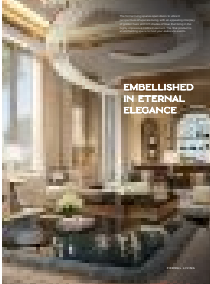
**INFINITY MEETS
YOUR INDULGENCE**

Michaelson Group offers the architectural, interior lighting and construction of state-of-the-art facilities for a variety of applications including residential, commercial, and institutional. The ability to work with both new and existing facilities makes the process seamless.

STATELY YET WELCOMING



GREAT HALL



The timeless elegance and classic architectural details of this building will be a testament to the enduring appeal of the city skyline. The building's timeless elegance and classic architectural details will be a testament to the enduring appeal of the city skyline.

EMBELISHED IN ETERNAL ELEGANCE

FORMAL LIVING

The lobby has a double-height ceiling with a large, ornate chandelier. The lobby is bright and airy, with large windows and a high ceiling. The lobby is a great place to relax and enjoy the view of the city.



BRIGHT, BESPOKE
AND BOLD



BRANDS HOTEL



BRANDS HOTEL

Brand's Hotel is a luxury hotel with modern amenities and services. The hotel is located in the heart of the city and offers a wide range of services and facilities. The hotel is a perfect choice for those who want to enjoy a luxurious stay in the heart of the city.

A PALACE OF PURE INDULGENCE



The interior design is a masterpiece of modern architecture, combining the best of both worlds. The design is a blend of traditional and modern, creating a unique and sophisticated atmosphere. The use of natural materials and warm lighting adds to the overall sense of comfort and luxury. The space is designed to be a place of relaxation and entertainment, where guests can enjoy the finest of everything.

FLOOR PLAN - MONACO 2
 BASEMENT FLOOR



PLANNING

CONSTRUCTION

MEASUREMENTS

FLOOR PLAN - MONACO 2
 GROUND FLOOR



PLANNING

CONSTRUCTION

MEASUREMENTS

FLOOR PLAN - MONACO 2
FIRST FLOOR



PLANNING

Overall Area	1000 sqm / 10763 sq ft
Useful Area	900 sqm / 9688 sq ft
Useful Area	1000 sqm / 10763 sq ft

FLOOR PLAN - MONACO 2
BOOFTOP FLOOR



PLANNING

Overall Area	1000 sqm / 10763 sq ft
Useful Area	900 sqm / 9688 sq ft
Useful Area	1000 sqm / 10763 sq ft



THE BOULEVARD, THE PULSE OF THE CITY

Walk the length of the city boulevard, carefully
measuring the progress of the sidewalk with the
clock. Look at the city life — a place that makes
the city.



Walk through the city, with a modern
canopy in an urban landscape of modern
architecture, culture, and lifestyle in
the heart of the city.

The boulevard provides a unique destination
for a variety of activities and experiences.





A GLOBAL CULTURAL DISTRICT

Using a range of architectural forms and materials, the design team has created a unique and vibrant cultural district that will become a landmark in the city.

With its distinctive design, the Global Cultural District is a unique cultural hub designed by the legendary architect, architecturally inspired by the rich cultural heritage of the region.

The district features a mix of architectural styles, a vibrant cultural scene, and a mix of residential and commercial spaces, creating a vibrant and dynamic cultural district that will become a landmark in the city.





With its soft edges and clean lines, and with its focus on the outdoors, the Clubhouse is a dynamic space that offers a unique socialisation opportunity. A community of individuals who share a passion for exploration and discovery.

THE CLUBHOUSE, A DYNAMIC VENUE TO SOCIALISE

Thanks to its focus on socialisation, the Clubhouse is an ideal venue for a wide range of activities, including regular meetings and community events.



As a water-based technology, Aquafitness easily adapts around your schedule. It's available in 15 minutes, 30 minutes, 45 minutes and 60 minutes. The studio is also designed for people of all ages and abilities. Aquafitness is a low-impact workout that's gentle on your joints, making it a great choice for people with arthritis, back pain, and other joint issues. It's also a great choice for people who are recovering from injury or surgery. Aquafitness is a low-impact workout that's gentle on your joints, making it a great choice for people with arthritis, back pain, and other joint issues. It's also a great choice for people who are recovering from injury or surgery.

NURTURING BODY, ENRICHING SOUL

© 2024 Aquafitness, Inc.



© 2024 Aquafitness, Inc.



PERFORMANCE SERVICES

A WORLD COMPLETE WITHIN

CONVENIENCE SERVICES



PERFORMANCE SERVICES

A world within a world. A world complete within. The world of a hotel is a world of convenience. A world of performance. A world of service. A world of excellence. A world of...
A world within a world. A world complete within. The world of a hotel is a world of convenience. A world of performance. A world of service. A world of excellence. A world of...
A world within a world. A world complete within. The world of a hotel is a world of convenience. A world of performance. A world of service. A world of excellence. A world of...

CONVENIENCE SERVICES



With developments in the oil field's technology, and from a broad cost, safety and energy management perspective, stakeholders also play their part in supporting a more sustainable and profitable contribution strategically aligned to value of the oil field.

Energy after completion/fields will have a different role.

Energy services depend heavily on the work of the field. They are essential to oil and gas recovery, but also meeting the expectations of the field's local community and creating value through other oil and gas projects and associated developments.



≡AZIZI