

ROSE TOWER

EMIRATES CITY - AJMAN

PROJECT BY



REAL ESTATE



Life moves at a different pace here.

Recharge after a busy workday and refocus on the things that matter – love, family and peace of mind.





WELCOME TO

ROSE TOWER

Rose Tower is a stylish residential tower with luxury apartments and commercial spaces strategically located on Sheikh Mohammed Bin Zayed Road. Featuring innovative interiors, spacious rooms, and big balconies, Rose Tower offers apartments with 1 and 2 bedrooms.

The aesthetics and modern luxury of the elegantly designed residences with a wide range of world-class amenities and commercial outlets make Rose Tower an ideal family destination



LIVING WELL
SHOULD FEEL
THIS EFFORTLESS



MODERN INTERIORS & HIGH-END FINISHES

With its stylish apartments and elegant interiors, Rose Tower offers a comfortable lifestyle inspired by a peaceful and uncomplicated way of living. Designed to create a sanctuary from modern urban living, each home offers a perfect setting for spending time with family, entertaining guests, or simply relaxing with friends. The exceptional craftsmanship ensures that every feature is finished to the highest standard.





THE HEART
OF THE HOME



There is no doubt that the kitchen is the core of a home. Rose Tower features fully fitted kitchens with appliances by premium European brands. Cook, entertain or just hang out, residents will have a truly wholesome experience here!





HOMES DESIGNED FOR LIVING

Far from all the city's noise yet close to its heart, Rose Tower is a stunning residential and commercial tower with elegantly crafted spaces. Ranging from cozy one-bedroom to two-bedroom luxury apartments, all residences at Rose Tower feature fully-fitted kitchens with premium branded appliances.

Innovative designs, spacious rooms, and balconies with spectacular views give an elevated living experience. Rose Tower is the perfect destination if you are looking to escape the non-stop pace of a busy metropolis but also prioritize accessibility and convenience.



A woman in a purple swimsuit is floating on her back in a swimming pool. The water is clear and blue, with sunlight creating ripples and reflections. The word 'AMENITIES' is written in large, white, sans-serif capital letters across the center of the image, partially overlapping the woman's body.

AMENITIES

SURROUNDINGS THAT UPLIFT AND INSPIRE

There is no better way to wind down than to take a dip in the luxurious infinity pool at Rose Tower. Immerse yourself in the highest infinity pool in UAE's northern region while enjoying the stunning views.





Helipad

Parking

Central AC

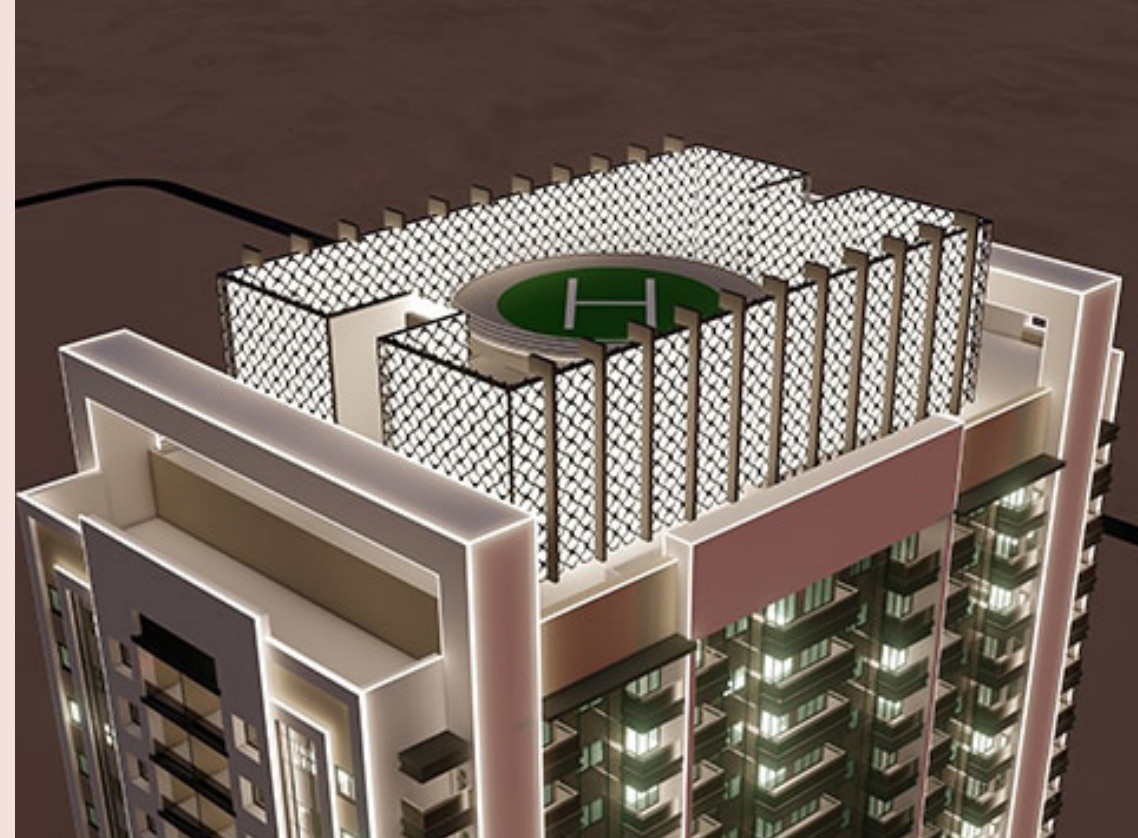
Elegant Lobby

Rooftop Infinity Swimming Pool

Fully Equipped Gym

24-hours Security

Balcony with Views of Al Zorah Nature Reserve





CONVENIENT LOCATION

Rose Tower is conveniently located on Sheikh Mohamed Bin Zayed E311, with direct access to all the major attractions in the region. It is just a 25-minutes drive away from Dubai and 10 minutes away from the central business districts of Ajman and Sharjah.

Rose Tower is close to all the main attractions in the region giving the residents an opportunity to be a part of a vibrant community. Have a splash of fun at the beach, stroll around with your loved ones at the mall or get moving at the nearby sports club, you will be spoilt for choice when it comes to leisure activities.

EMIRATES CITY - AJMAN



06 Minutes
Sheikh Khalifa Hospital



07 Minutes
Ajman University



10 Minutes
City Centre Ajman



12 Minutes
Winners Sports Club



28 Minutes
Downtown Dubai



15 Minutes
Ajman Beach



25 Minutes
Sharjah Airport



23 Minutes
Al Hamriyah Freezone

BOOKING DETAILS

DOCUMENTS NEEDED TO BOOK A UNIT

NATIONAL / UAE RESIDENT

Passport copy

Passport copy signature page

Visa page

Emirates ID

Contact and address details

NON-UAE RESIDENT

Passport copy

Passport copy signature page

National ID card (where applicable)

Contact and address details

Reservation Deposit of 5% of the unit value in AED to be made by credit card or cheque

PROCESS

Reservation Deposit is collected with documents and customer details.

Receipt will be issued to the customer.

Unit will be blocked.

Sales and Purchase Agreement (SPA) will be emailed to the customer.

Customer to sign SPA and return the original, along with instructions to transfer down payment to the specific ESCROW account details.

Initial contract (OQOOD) will be issued through the department of land and real estate regulation and admin fees are paid. Customer is informed of construction progress and makes the agreed upon payments.



PAYMENT PLAN

WHERE LIFESTYLE MEETS AFFORDABILITY

1% PER MONTH

7 YEARS PAYMENT PLAN

ZERO % INTEREST

5% DOWNPAYMENT

STARTING AED 444,000



WHY AJMAN?

GREAT LIVING. GREAT INVESTMENT

Ajman is the smallest yet most diverse of all emirates in the UAE. Located strategically, it borders Sharjah and is only 30 km away from Dubai providing easy commute to other emirates. The perennial sunshine of its golden shores sitting alongside the serene beaches is a haven away from the hassles of life. Its unspoiled landscapes, misty mangroves, authentic culture, and contemporary infrastructure make it a unique destination.

Ajman's diversity and sustainable development attract a large number of investors who are keen to tap into its lucrative business opportunities. Ajman's latest opening of free zone and visa extensions for investors inject more liquidity into the local economy and boosts the underlying confidence of foreign investors. With new laws by the UAE government to grant citizenship to expatriates and ease the rules to provide a conducive atmosphere, Ajman is rapidly growing as a hub for prospective investors to live and work.



FLOOR PLANS

All plans and renderings are conceptual and
are subject to change without notice.

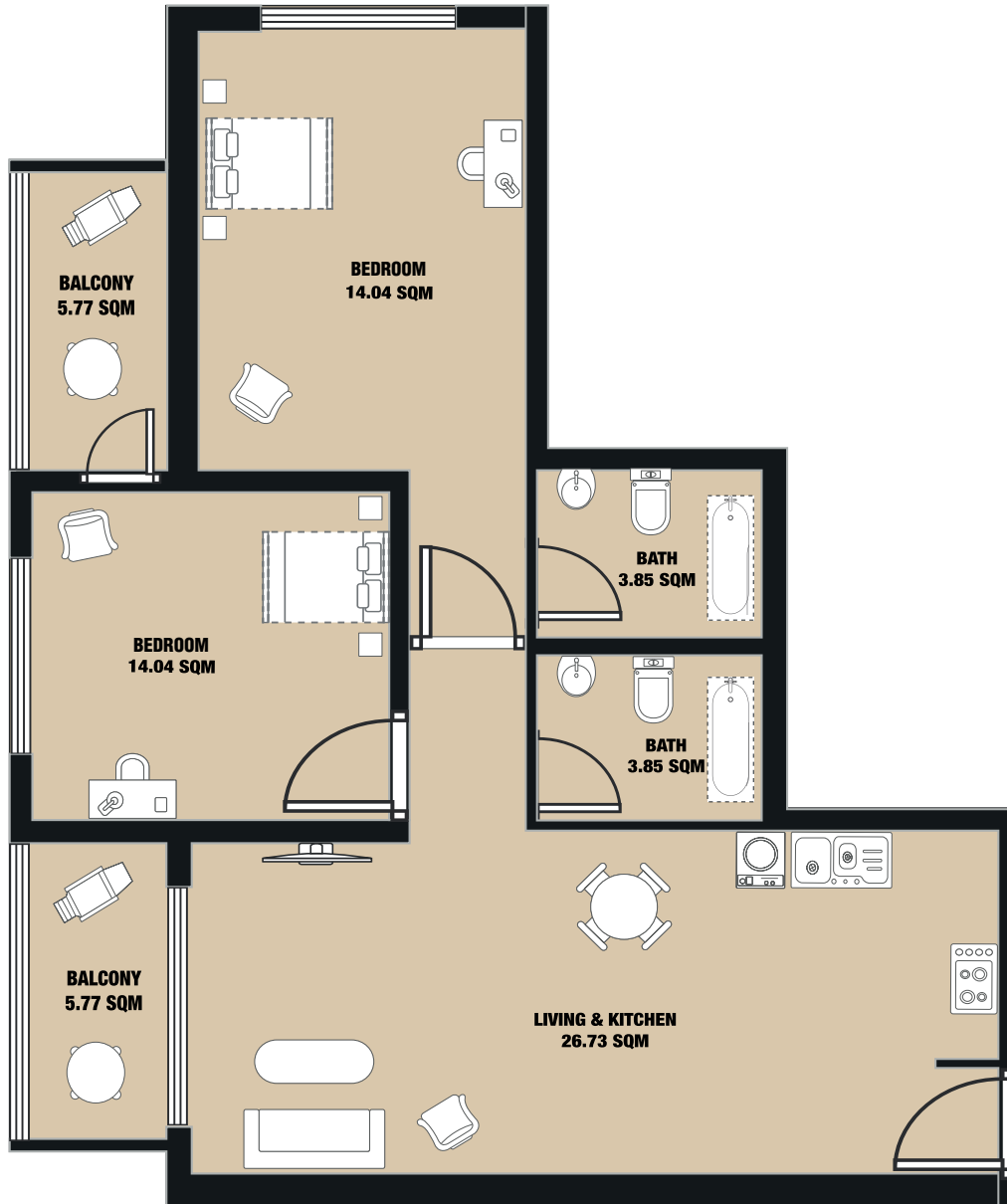




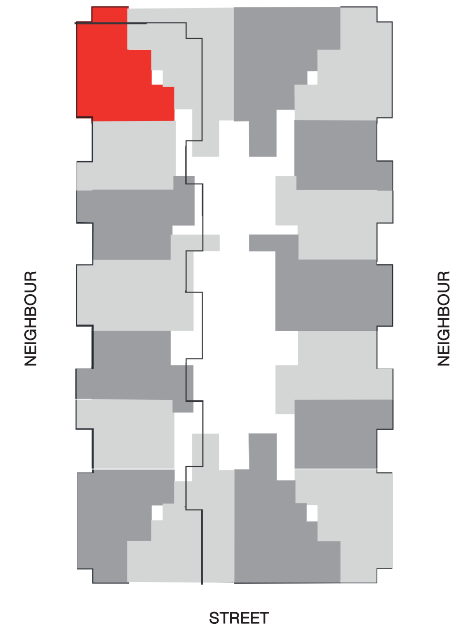
2 BEDROOM APARTMENT

2 BALCONIES+LIVING ROOM+KITCHEN+2 BATHROOMS

01- SERIES



SHEIKH MOHAMMED BIN ZAYED ROAD E311



TOTAL GROSS AREA: 119.17 SQM

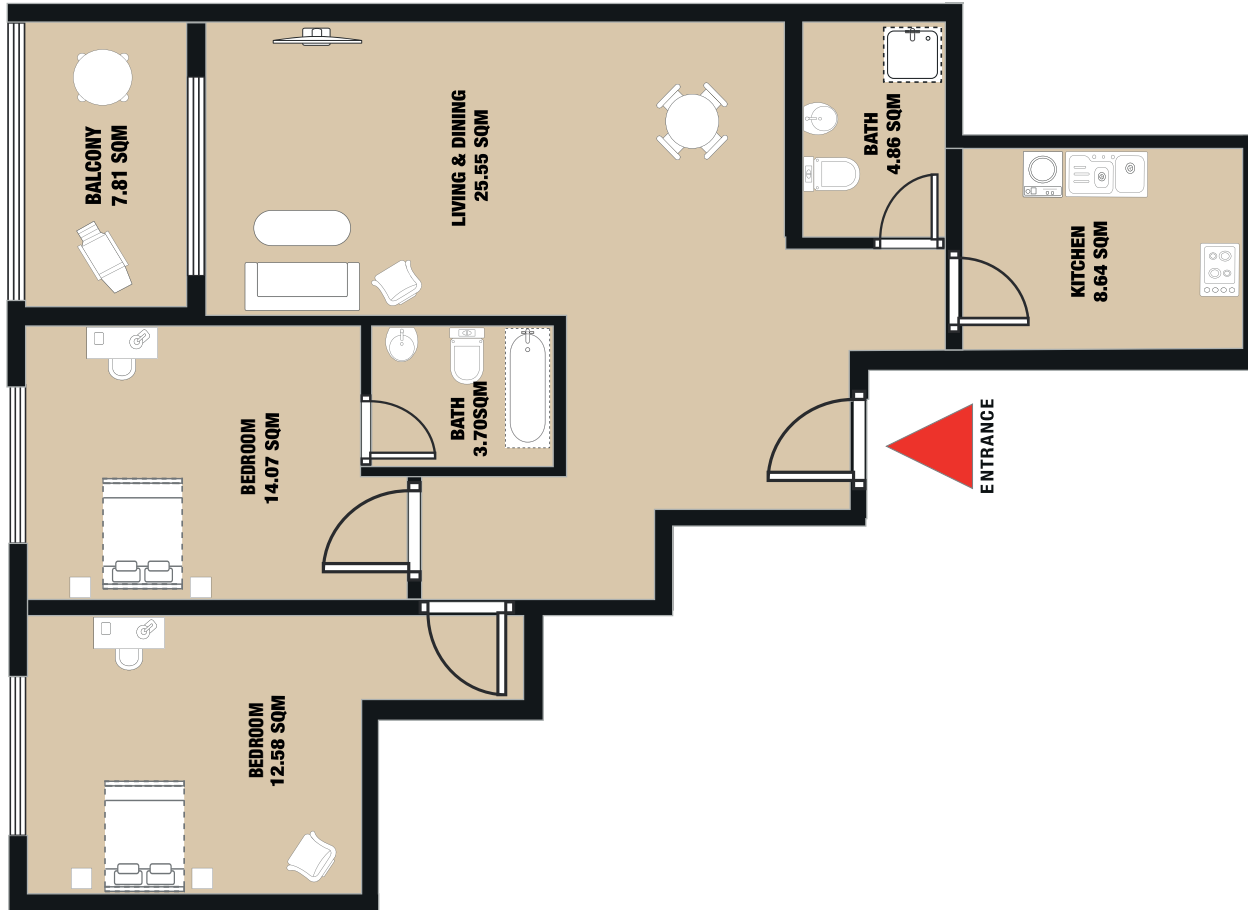
1. All dimensions are in imperial and metric, and measured from finish to finish excluding construction tolerances.
2. All materials, dimensions, and drawings are approximate only.
3. Information is subject to change without notice, at the developer's absolute discretion.
4. Actual area may vary from the stated area.
5. Drawings not to scale.

6. All images used are for illustrative purposes only and do not represent the actual size, features, specifications, fittings, and furnishings.
7. The developer reserves the right to make revisions/alterations, at its absolute discretion, without any liability whatsoever.

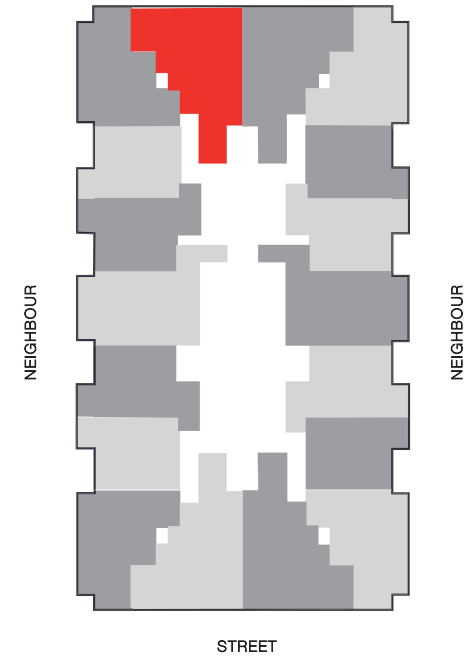
2 BEDROOM APARTMENT

BALCONY+LIVING ROOM+KITCHEN+2 BATHROOMS

02-SERIES



SHEIKH MOHAMMED BIN ZAYED ROAD E311



TOTAL GROSS AREA: 148.55 SQM

1. All dimensions are in imperial and metric, and measured from finish to finish excluding construction tolerances.
2. All materials, dimensions, and drawings are approximate only.
3. Information is subject to change without notice, at the developer's absolute discretion.
4. Actual area may vary from the stated area.
5. Drawings not to scale.
6. All images used are for illustrative purposes only and do not represent the actual size, features, specifications, fittings, and furnishings.
7. The developer reserves the right to make revisions/alterations, at its absolute discretion, without any liability whatsoever.

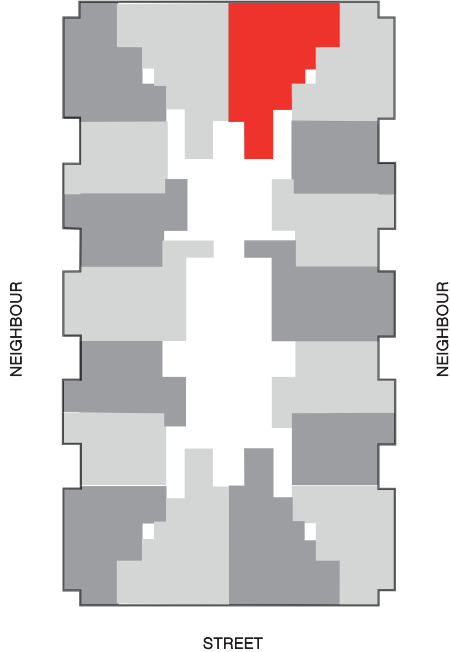
2 BEDROOM APARTMENT

BALCONY+LIVING ROOM+KITCHEN+2 BATHROOMS

03-SERIES



SHEIKH MOHAMMED BIN ZAYED ROAD E311



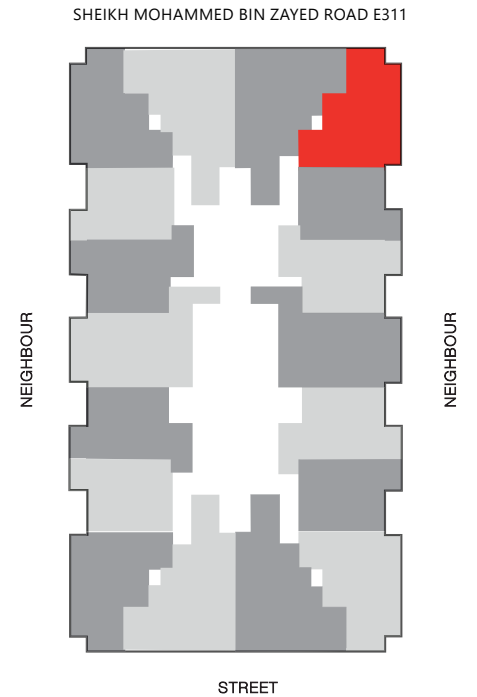
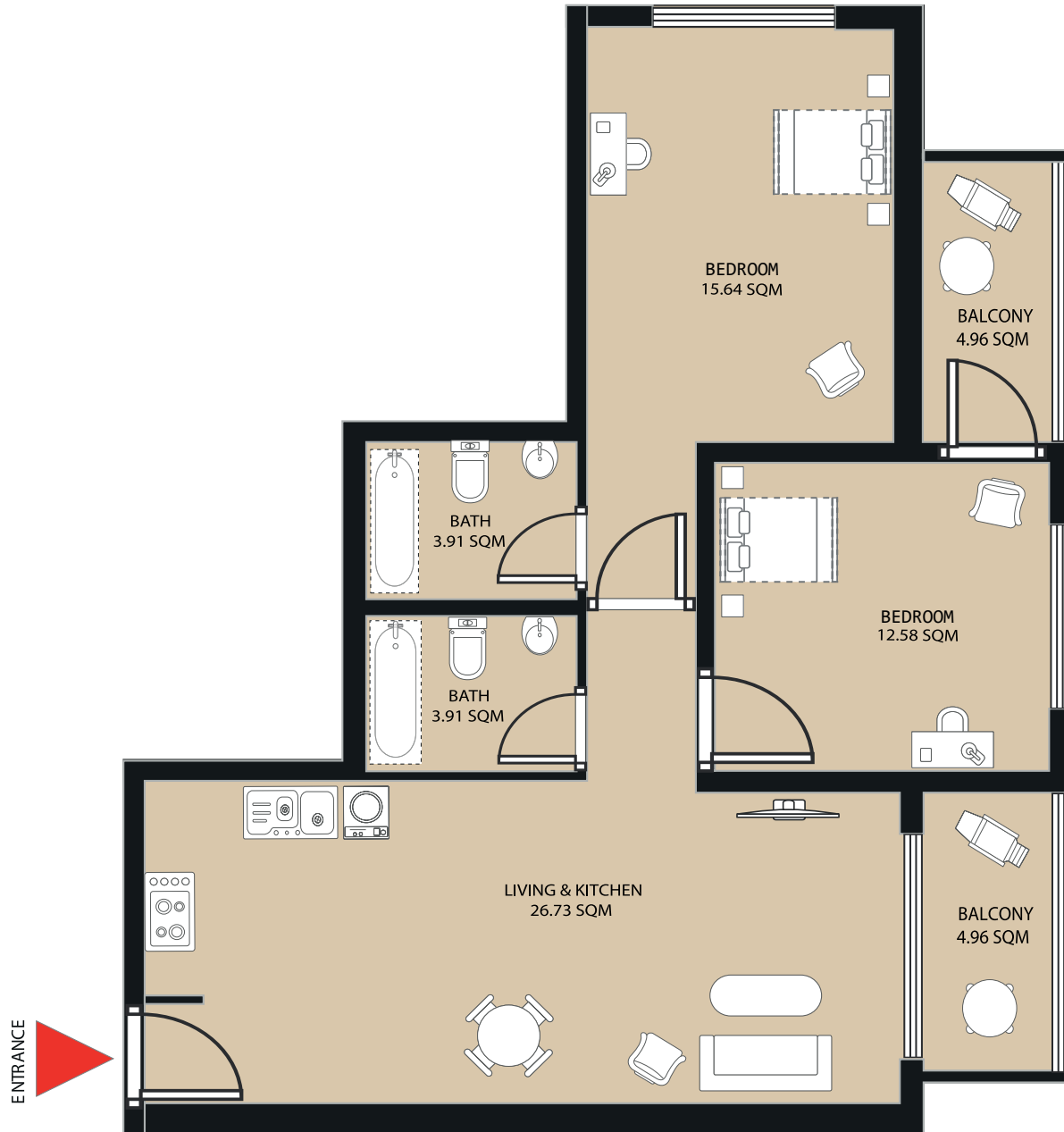
TOTAL GROSS AREA: 148.55 SQM

1. All dimensions are in imperial and metric, and measured from finish to finish excluding construction tolerances.
 2. All materials, dimensions, and drawings are approximate only.
 3. Information is subject to change without notice, at the developer's absolute discretion.
 4. Actual area may vary from the stated area.
 5. Drawings not to scale.
 6. All images used are for illustrative purposes only and do not represent the actual size, features, specifications, fittings, and furnishings.
 7. The developer reserves the right to make revisions/alterations, at its absolute discretion, without any liability whatsoever.

2 BEDROOM APARTMENT

2 BALCONIES+LIVING ROOM+KITCHEN+2 BATHROOMS

04-SERIES



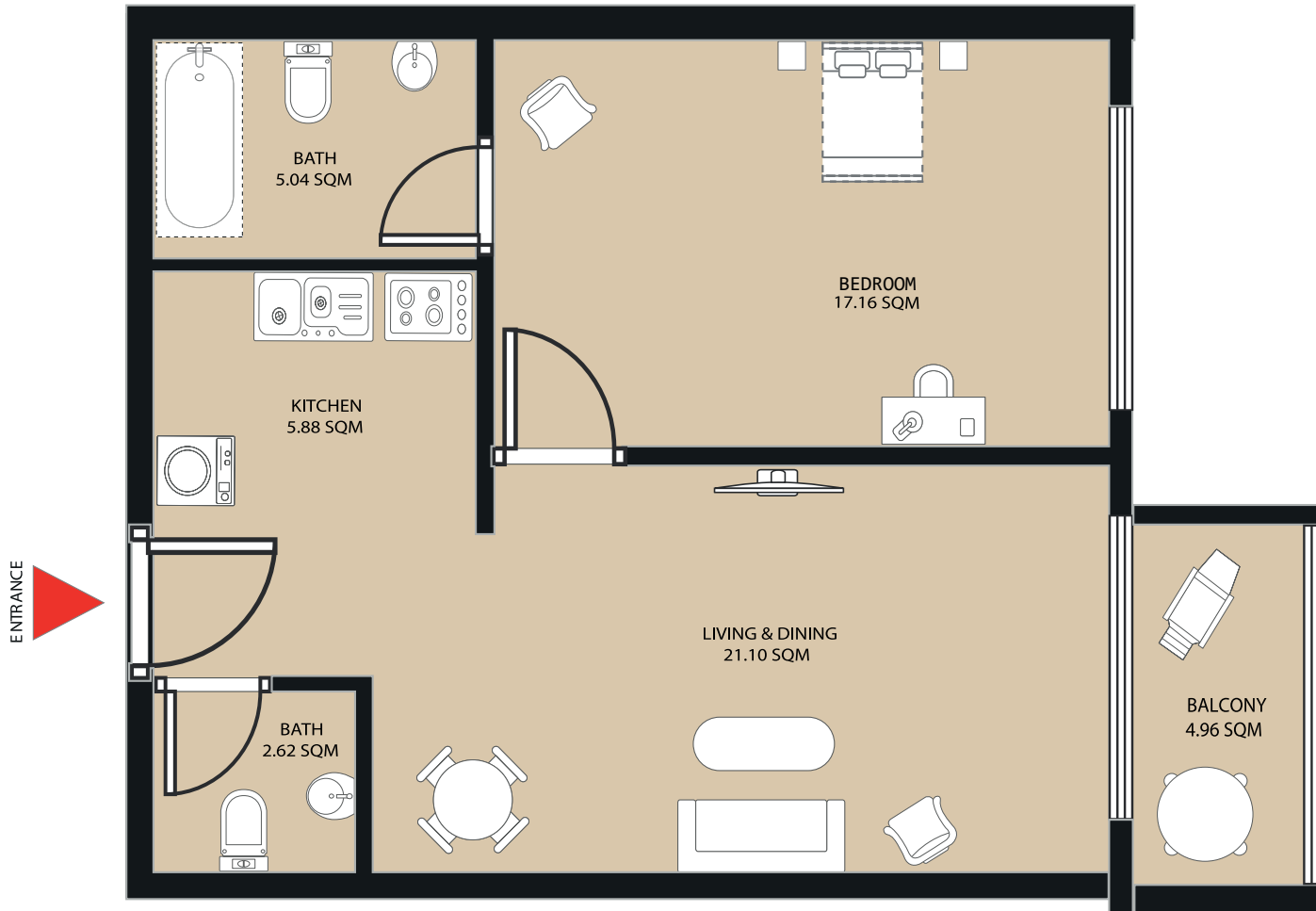
TOTAL GROSS AREA: 119.17 SQM

1. All dimensions are in imperial and metric, and measured from finish to finish excluding construction tolerances.
2. All materials, dimensions, and drawings are approximate only.
3. Information is subject to change without notice, at the developer's absolute discretion.
4. Actual area may vary from the stated area.
5. Drawings not to scale.
6. All images used are for illustrative purposes only and do not represent the actual size, features, specifications, fittings, and furnishings.
7. The developer reserves the right to make revisions/alterations, at its absolute discretion, without any liability whatsoever.

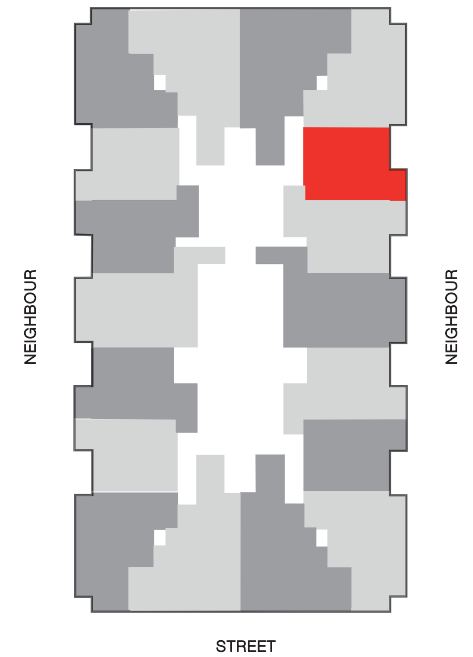
1 BEDROOM APARTMENT

BALCONY+LIVING ROOM+KITCHEN+2 BATHROOMS

05-SERIES



SHEIKH MOHAMMED BIN ZAYED ROAD E311



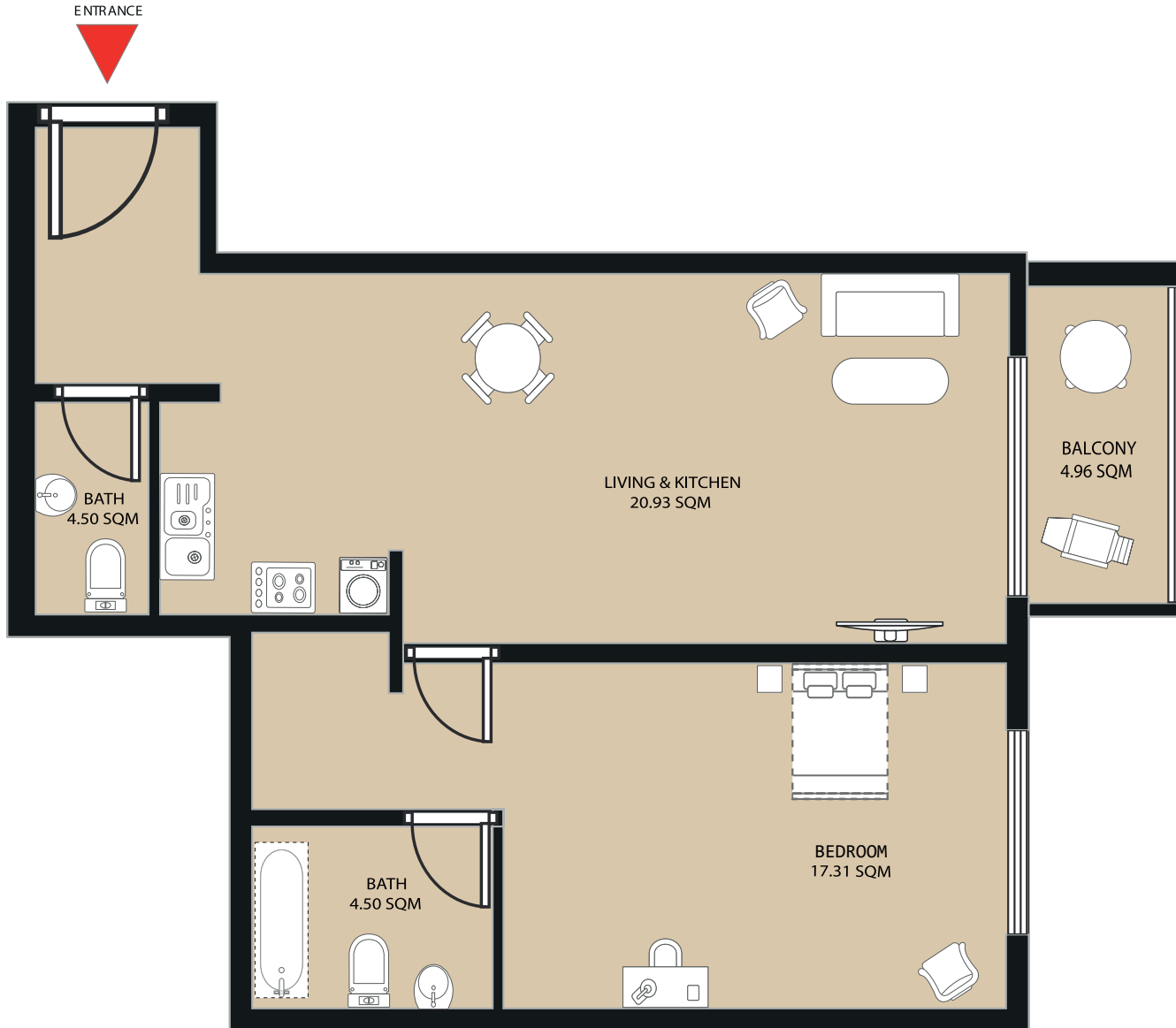
TOTAL GROSS AREA: 89.06 SQM

1. All dimensions are in imperial and metric, and measured from finish to finish excluding construction tolerances.
2. All materials, dimensions, and drawings are approximate only.
3. Information is subject to change without notice, at the developer's absolute discretion.
4. Actual area may vary from the stated area.
5. Drawings not to scale.
6. All images used are for illustrative purposes only and do not represent the actual size, features, specifications, fittings, and furnishings.
7. The developer reserves the right to make revisions/alterations, at its absolute discretion, without any liability whatsoever.

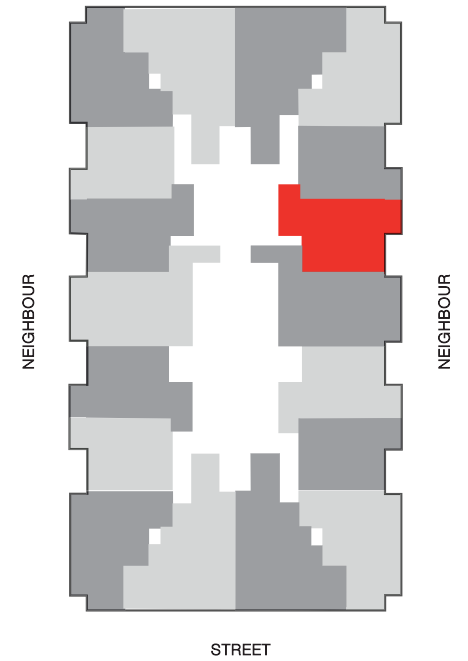
1 BEDROOM APARTMENT

BALCONY+LIVING ROOM+KITCHEN+2 BATHROOMS

06-SERIES



SHEIKH MOHAMMED BIN ZAYED ROAD E311



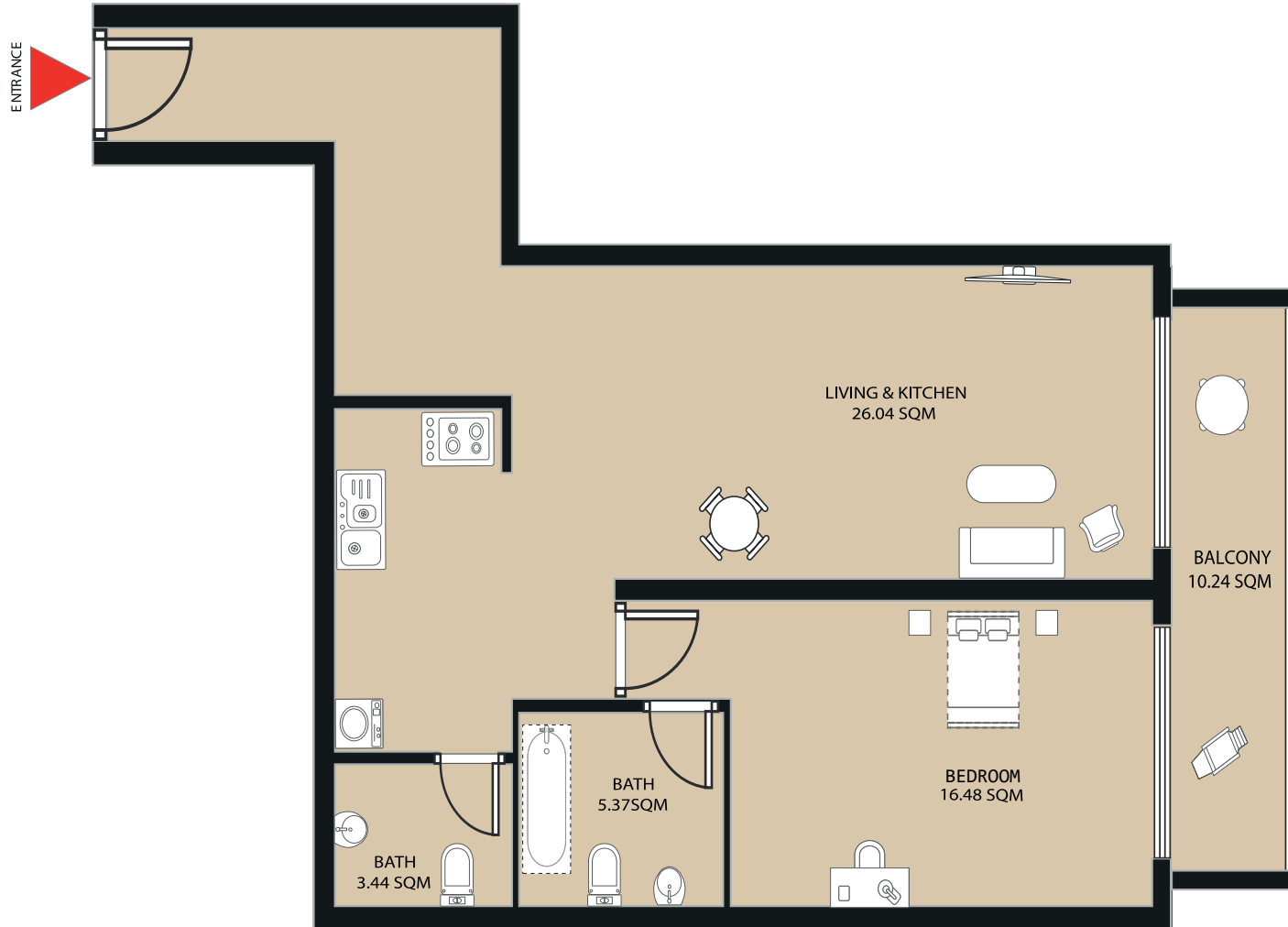
TOTAL GROSS AREA: 101.07 SQM

1. All dimensions are in imperial and metric, and measured from finish to finish excluding construction tolerances.
2. All materials, dimensions, and drawings are approximate only.
3. Information is subject to change without notice, at the developer's absolute discretion.
4. Actual area may vary from the stated area.
5. Drawings not to scale.
6. All images used are for illustrative purposes only and do not represent the actual size, features, specifications, fittings, and furnishings.
7. The developer reserves the right to make revisions/alterations, at its absolute discretion, without any liability whatsoever.

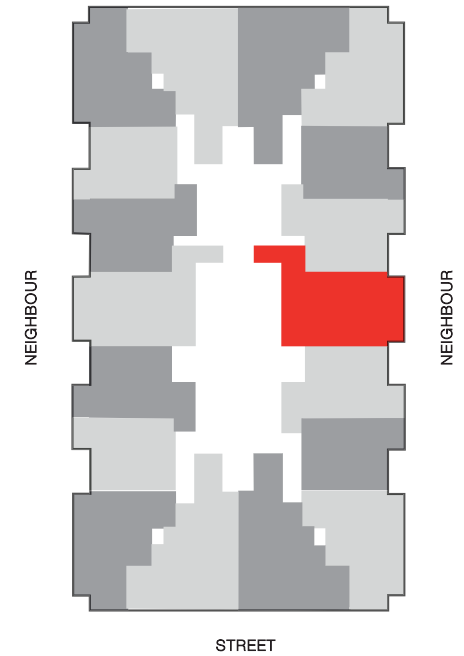
1 BEDROOM APARTMENT

BALCONY+LIVING ROOM+KITCHEN+2 BATHROOMS

07-SERIES



SHEIKH MOHAMMED BIN ZAYED ROAD E311



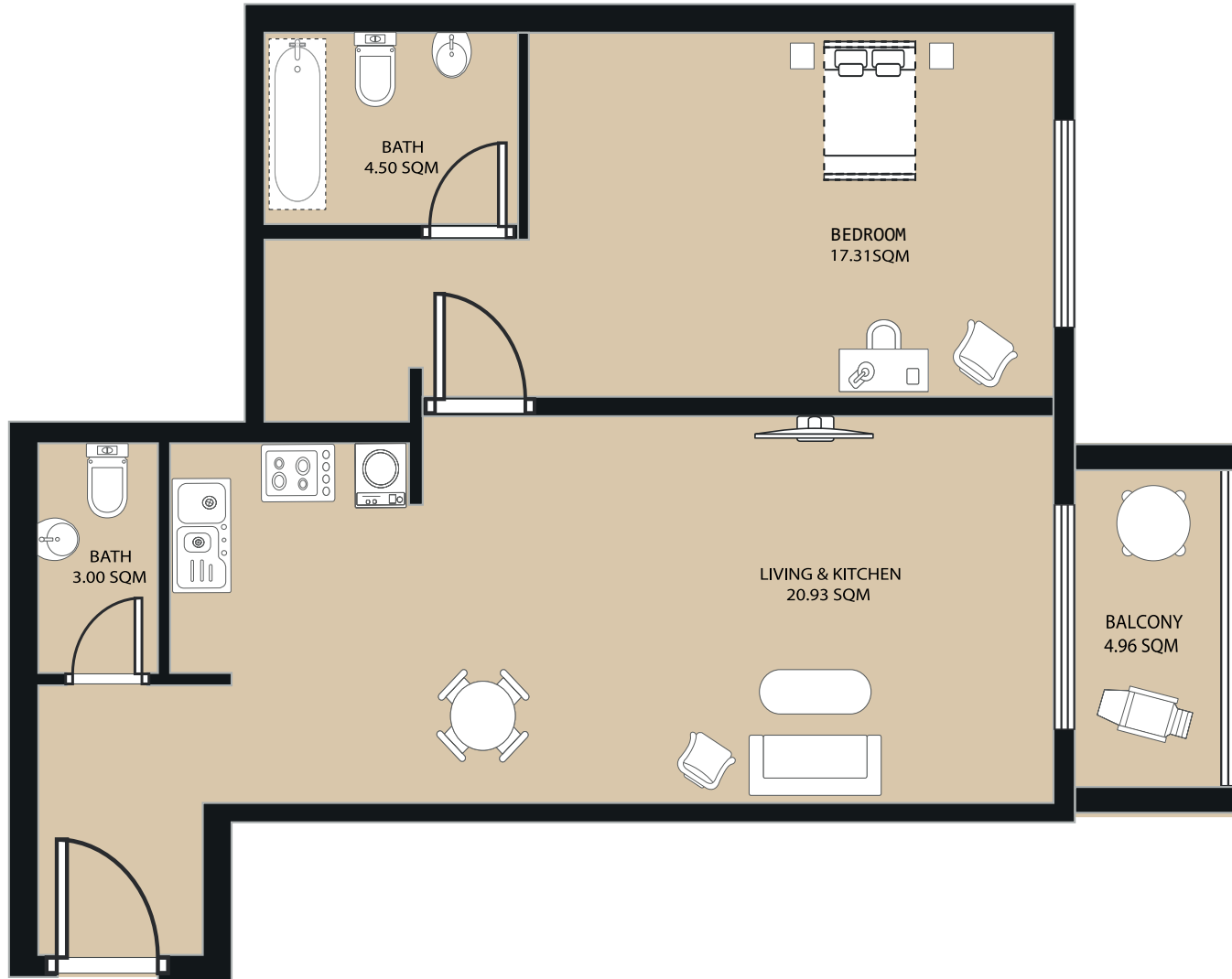
TOTAL GROSS AREA: 125.5 SQM

1. All dimensions are in imperial and metric, and measured from finish to finish excluding construction tolerances.
2. All materials, dimensions, and drawings are approximate only.
3. Information is subject to change without notice, at the developer's absolute discretion.
4. Actual area may vary from the stated area.
5. Drawings not to scale.
6. All images used are for illustrative purposes only and do not represent the actual size, features, specifications, fittings, and furnishings.
7. The developer reserves the right to make revisions/alterations, at its absolute discretion, without any liability whatsoever.

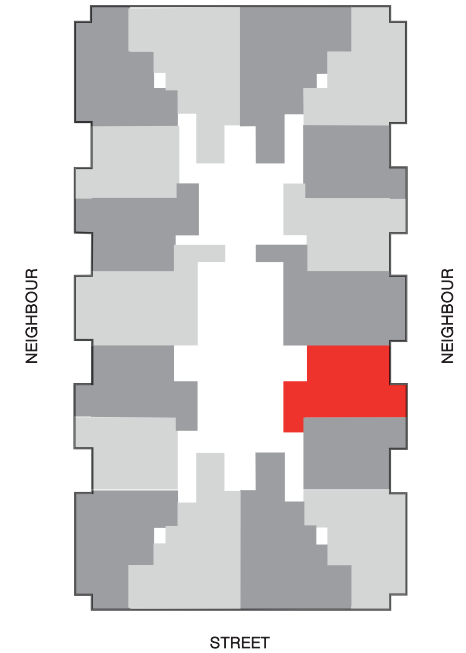
1 BEDROOM APARTMENT

BALCONY+LIVING ROOM+KITCHEN+2 BATHROOMS

08-SERIES



SHEIKH MOHAMMED BIN ZAYED ROAD E311



TOTAL GROSS AREA: 100.70 SQM

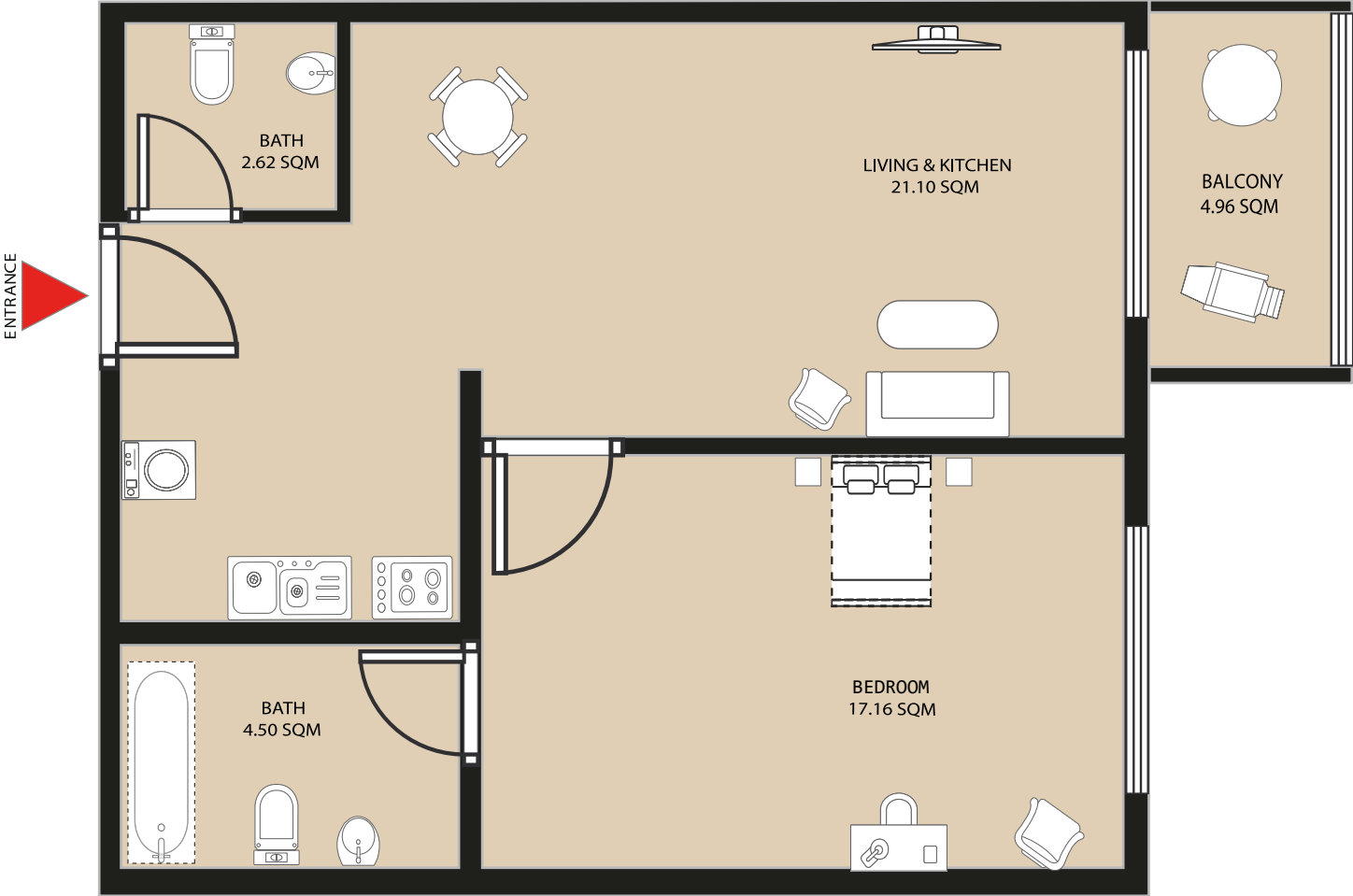


1. All dimensions are in imperial and metric, and measured from finish to finish excluding construction tolerances.
2. All materials, dimensions, and drawings are approximate only.
3. Information is subject to change without notice, at the developer's absolute discretion.
4. Actual area may vary from the stated area.
5. Drawings not to scale.
6. All images used are for illustrative purposes only and do not represent the actual size, features, specifications, fittings, and furnishings.
7. The developer reserves the right to make revisions/alterations, at its absolute discretion, without any liability whatsoever.

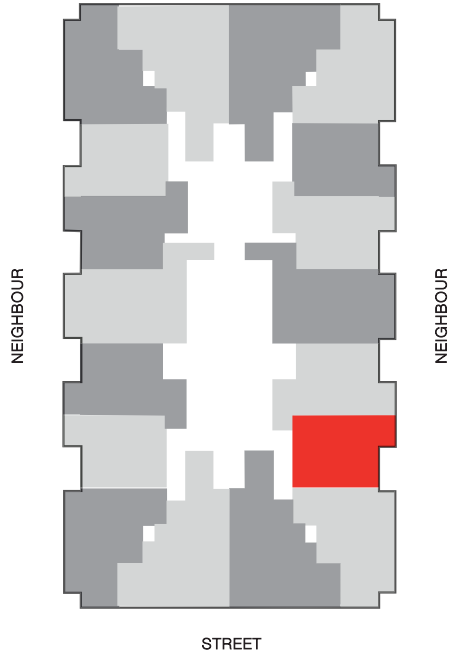
1 BEDROOM APARTMENT

BALCONY+LIVING ROOM+KITCHEN+2 BATHROOMS

09-SERIES



SHEIKH MOHAMMED BIN ZAYED ROAD E311



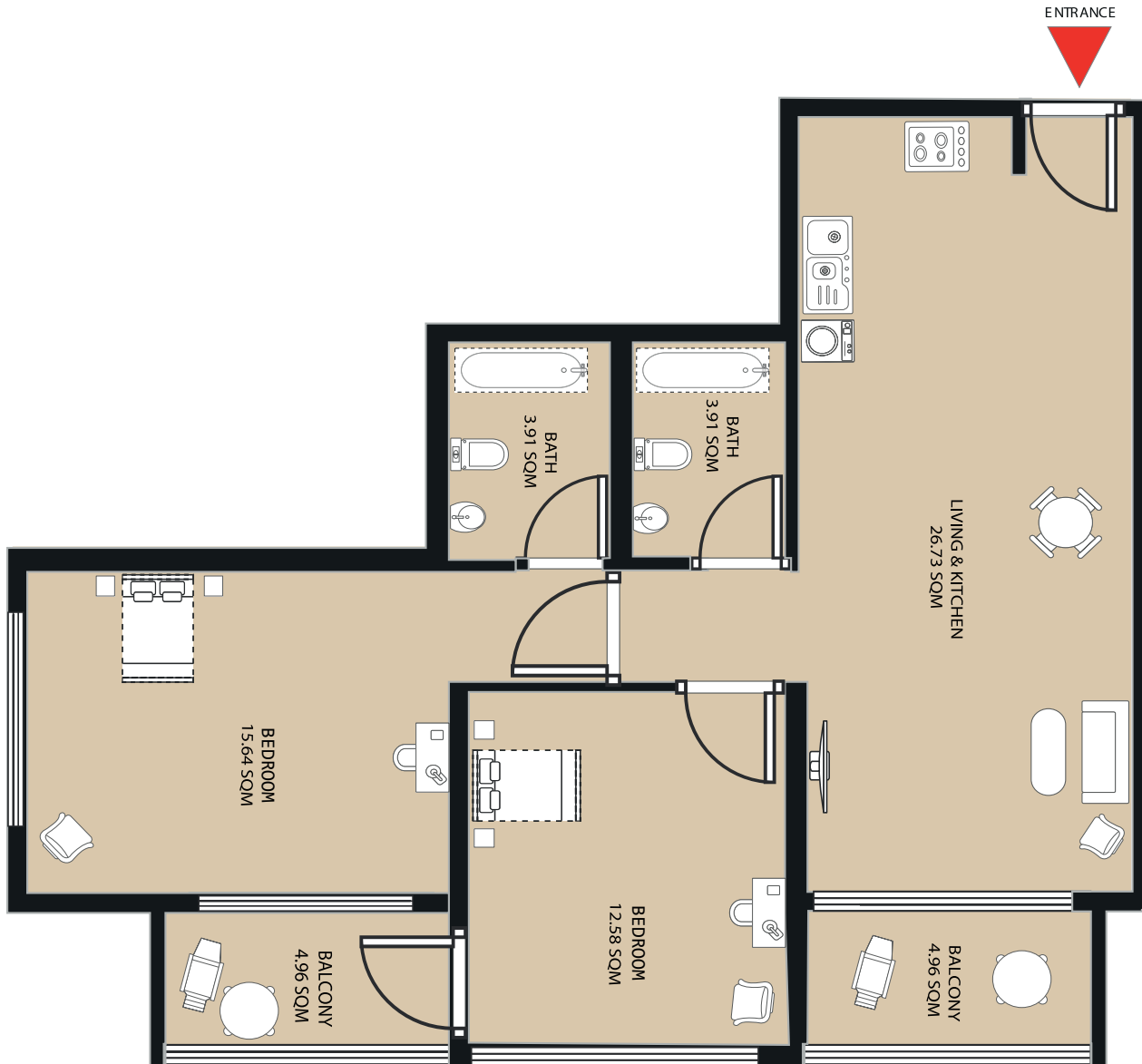
TOTAL GROSS AREA: 89.06 SQM

1. All dimensions are in imperial and metric, and measured from finish to finish excluding construction tolerances.
 2. All materials, dimensions, and drawings are approximate only.
 3. Information is subject to change without notice, at the developer's absolute discretion.
 4. Actual area may vary from the stated area.
 5. Drawings not to scale.
 6. All images used are for illustrative purposes only and do not represent the actual size, features, specifications, fittings, and furnishings.
 7. The developer reserves the right to make revisions/alterations, at its absolute discretion, without any liability whatsoever.

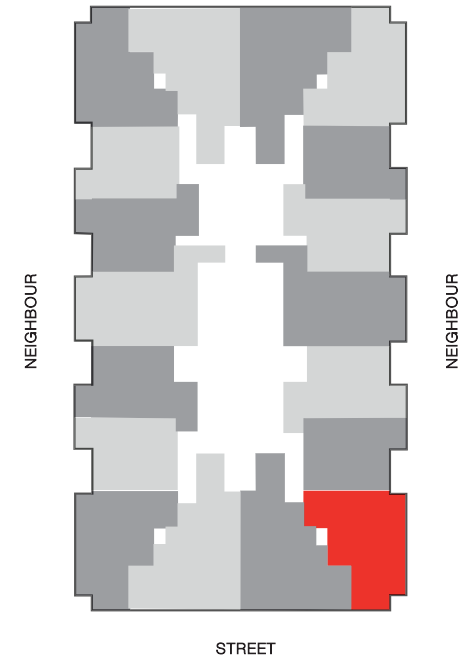
2 BEDROOM APARTMENT

2 BALCONIES+LIVING ROOM+KITCHEN+2 BATHROOMS

10-SERIES



SHEIKH MOHAMMED BIN ZAYED ROAD E311



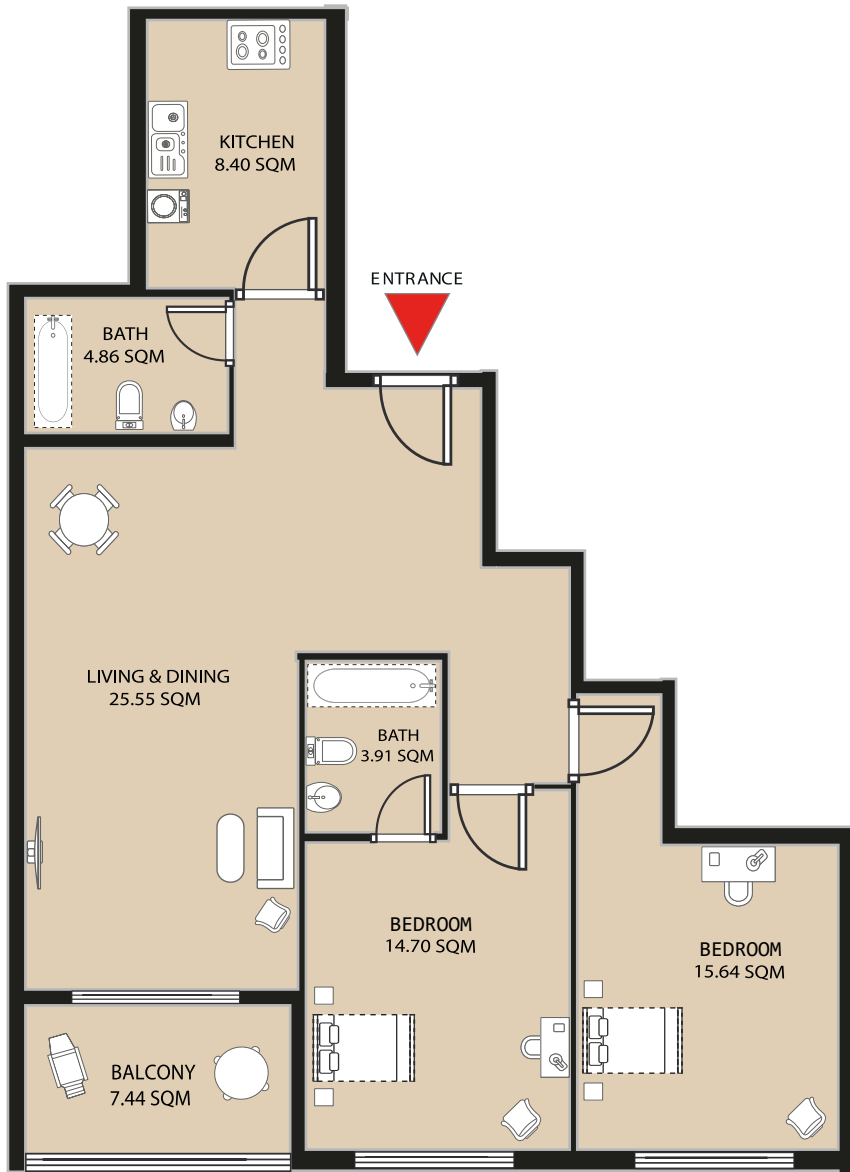
TOTAL GROSS AREA: 119.15 SQM

1. All dimensions are in imperial and metric, and measured from finish to finish excluding construction tolerances.
2. All materials, dimensions, and drawings are approximate only.
3. Information is subject to change without notice, at the developer's absolute discretion.
4. Actual area may vary from the stated area.
5. Drawings not to scale.
6. All images used are for illustrative purposes only and do not represent the actual size, features, specifications, fittings, and furnishings.
7. The developer reserves the right to make revisions/alterations, at its absolute discretion, without any liability whatsoever.

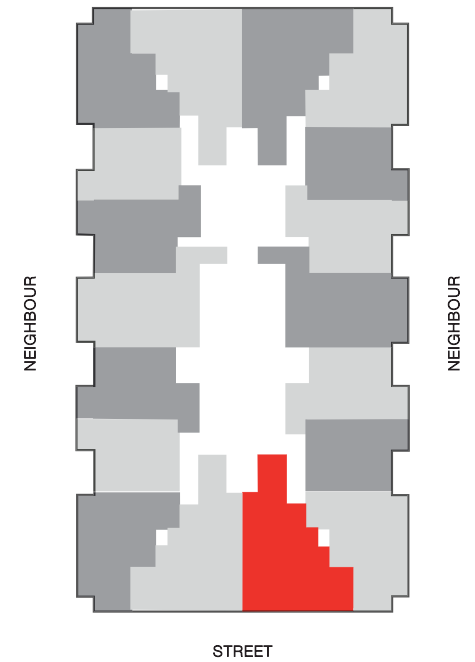
2 BEDROOM APARTMENT

BALCONY+LIVING ROOM+KITCHEN+2 BATHROOMS

11-SERIES



SHEIKH MOHAMMED BIN ZAYED ROAD E311



TOTAL GROSS AREA: 148.53 SQM

1. All dimensions are in imperial and metric, and measured from finish to finish excluding construction tolerances.
2. All materials, dimensions, and drawings are approximate only.
3. Information is subject to change without notice, at the developer's absolute discretion.
4. Actual area may vary from the stated area.
5. Drawings not to scale.
6. All images used are for illustrative purposes only and do not represent the actual size, features, specifications, fittings, and furnishings.
7. The developer reserves the right to make revisions/alterations, at its absolute discretion, without any liability whatsoever.

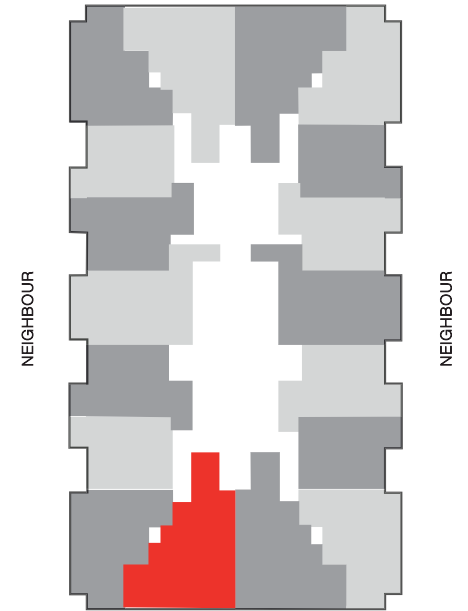
2 BEDROOM APARTMENT

BALCONY+LIVING ROOM+KITCHEN+2 BATHROOMS

12-SERIES



SHEIKH MOHAMMED BIN ZAYED ROAD E311



STREET

TOTAL GROSS AREA: 148.43 SQM

- 1. All dimensions are in imperial and metric, and measured from finish to finish excluding construction tolerances.
- 2. All materials, dimensions, and drawings are approximate only.
- 3. Information is subject to change without notice, at the developer's absolute discretion.
- 4. Actual area may vary from the stated area.
- 5. Drawings not to scale.
- 6. All images used are for illustrative purposes only and do not represent the actual size, features, specifications, fittings, and furnishings.
- 7. The developer reserves the right to make revisions/alterations, at its absolute discretion, without any liability whatsoever.

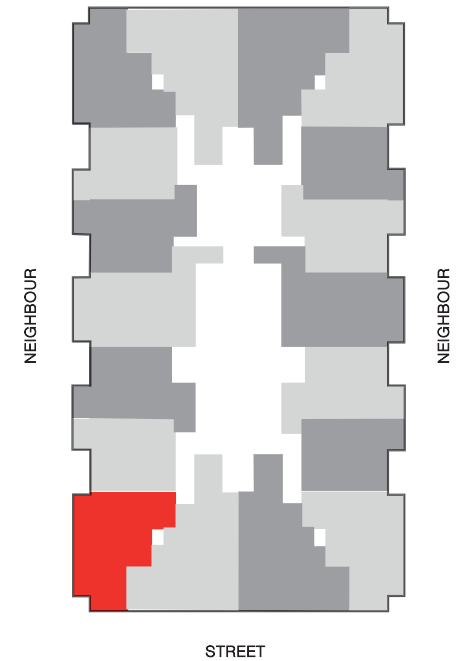
2 BEDROOM APARTMENT

2 BALCONIES+LIVING ROOM+KITCHEN+2 BATHROOMS

13-SERIES



SHEIKH MOHAMMED BIN ZAYED ROAD E311



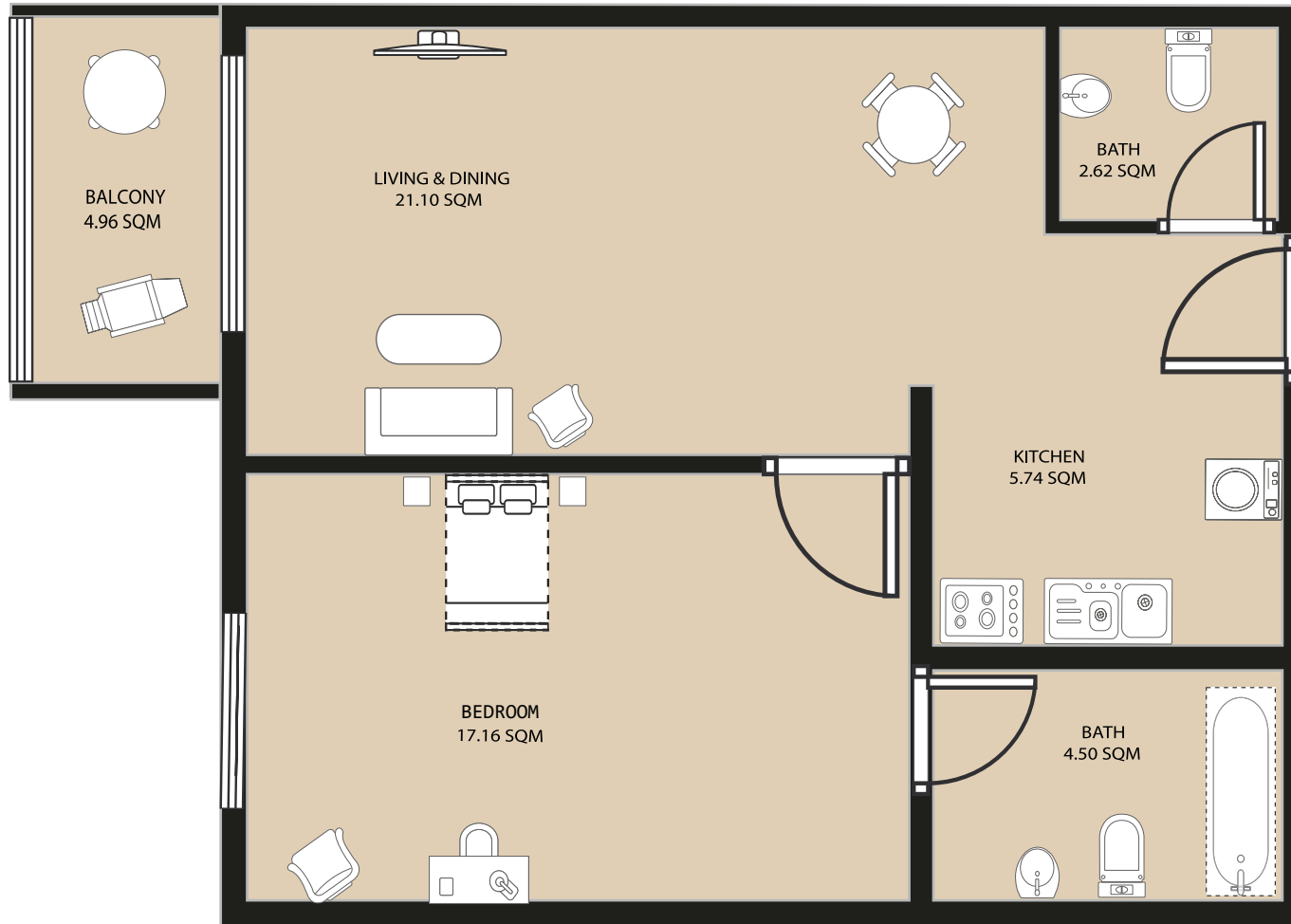
TOTAL GROSS AREA: 119.15 SQM

- 1. All dimensions are in imperial and metric, and measured from finish to finish excluding construction tolerances.
- 2. All materials, dimensions, and drawings are approximate only.
- 3. Information is subject to change without notice, at the developer's absolute discretion.
- 4. Actual area may vary from the stated area.
- 5. Drawings not to scale.
- 6. All images used are for illustrative purposes only and do not represent the actual size, features, specifications, fittings, and furnishings.
- 7. The developer reserves the right to make revisions/alterations, at its absolute discretion, without any liability whatsoever.

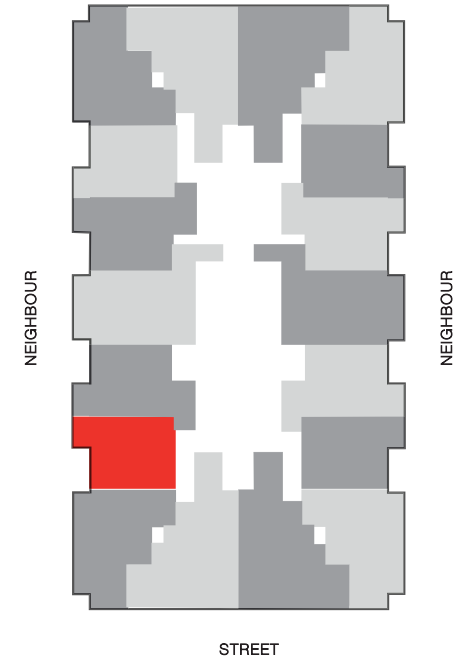
1 BEDROOM APARTMENT

BALCONY+LIVING ROOM+KITCHEN+2 BATHROOMS

14-SERIES



SHEIKH MOHAMMED BIN ZAYED ROAD E311



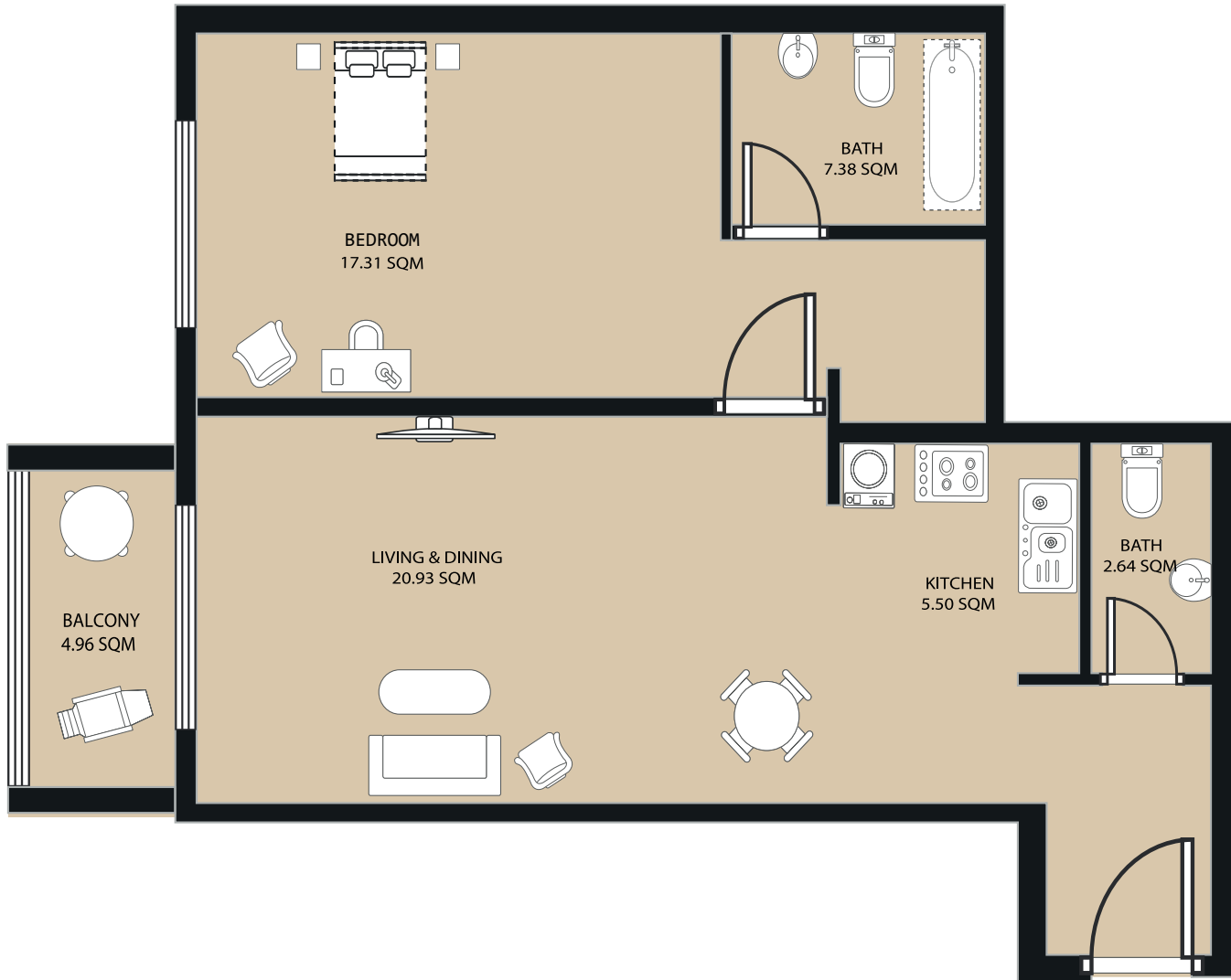
TOTAL GROSS AREA: 89.06 SQM

1. All dimensions are in imperial and metric, and measured from finish to finish excluding construction tolerances.
2. All materials, dimensions, and drawings are approximate only.
3. Information is subject to change without notice, at the developer's absolute discretion.
4. Actual area may vary from the stated area.
5. Drawings not to scale.
6. All images used are for illustrative purposes only and do not represent the actual size, features, specifications, fittings, and furnishings.
7. The developer reserves the right to make revisions/alterations, at its absolute discretion, without any liability whatsoever.

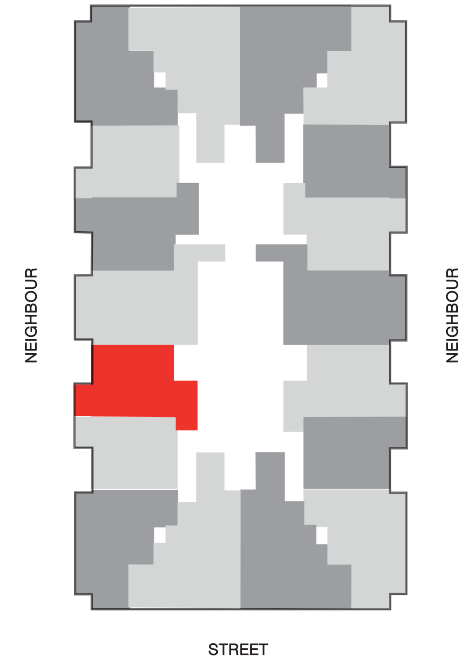
1 BEDROOM APARTMENT

BALCONY+LIVING ROOM+KITCHEN+2 BATHROOMS

15-SERIES



SHEIKH MOHAMMED BIN ZAYED ROAD E311



TOTAL GROSS AREA: 100.70 SQM

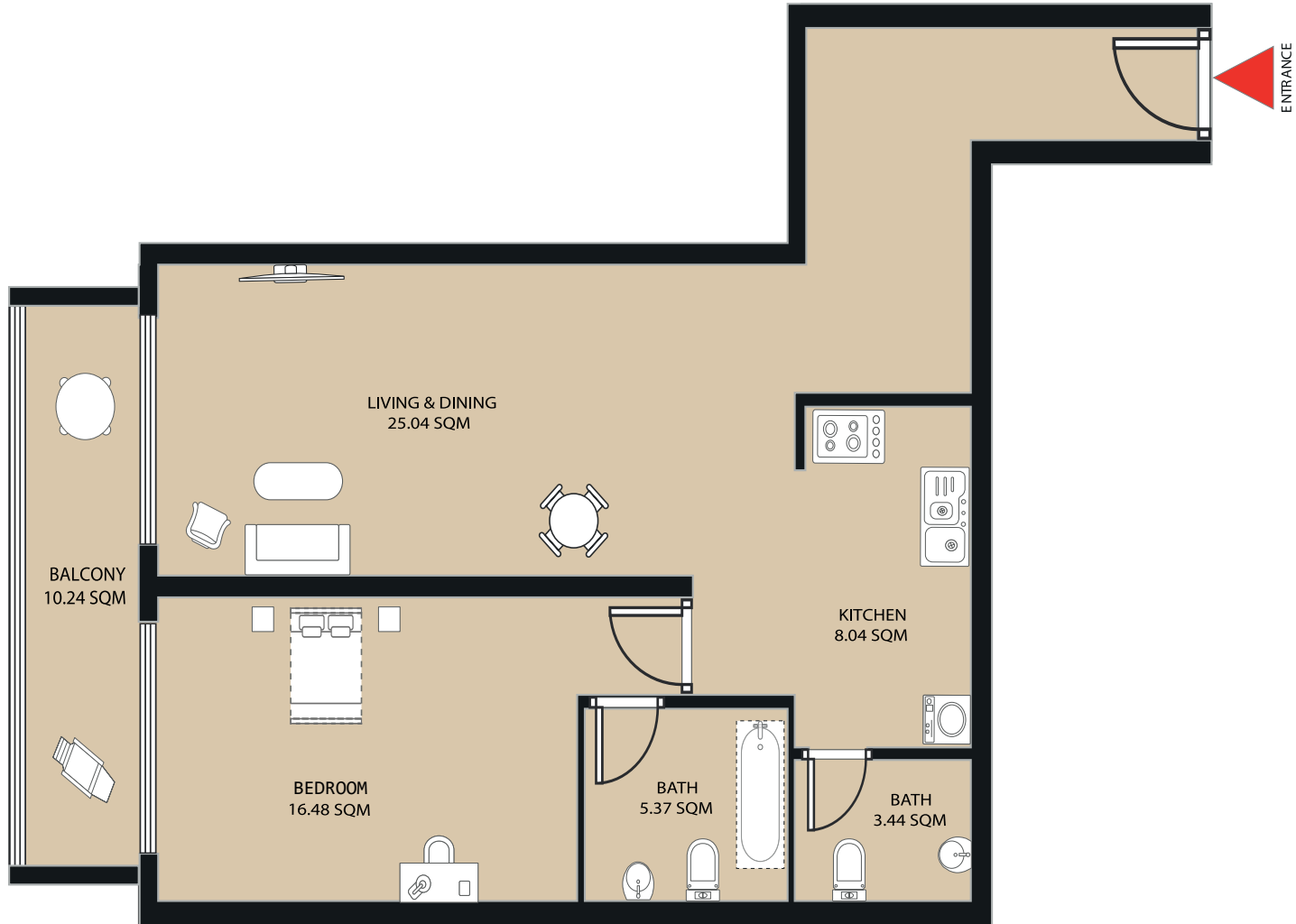


1. All dimensions are in imperial and metric, and measured from finish to finish excluding construction tolerances.
2. All materials, dimensions, and drawings are approximate only.
3. Information is subject to change without notice, at the developer's absolute discretion.
4. Actual area may vary from the stated area.
5. Drawings not to scale.
6. All images used are for illustrative purposes only and do not represent the actual size, features, specifications, fittings, and furnishings.
7. The developer reserves the right to make revisions/alterations, at its absolute discretion, without any liability whatsoever.

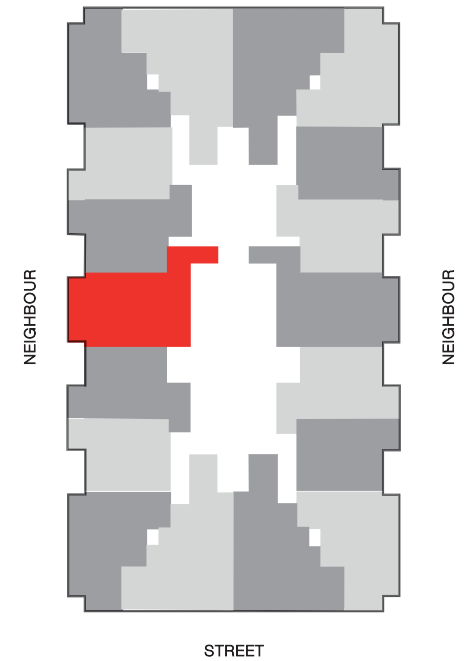
1 BEDROOM APARTMENT

BALCONY+LIVING ROOM+KITCHEN+2 BATHROOMS

16-SERIES



SHEIKH MOHAMMED BIN ZAYED ROAD E311



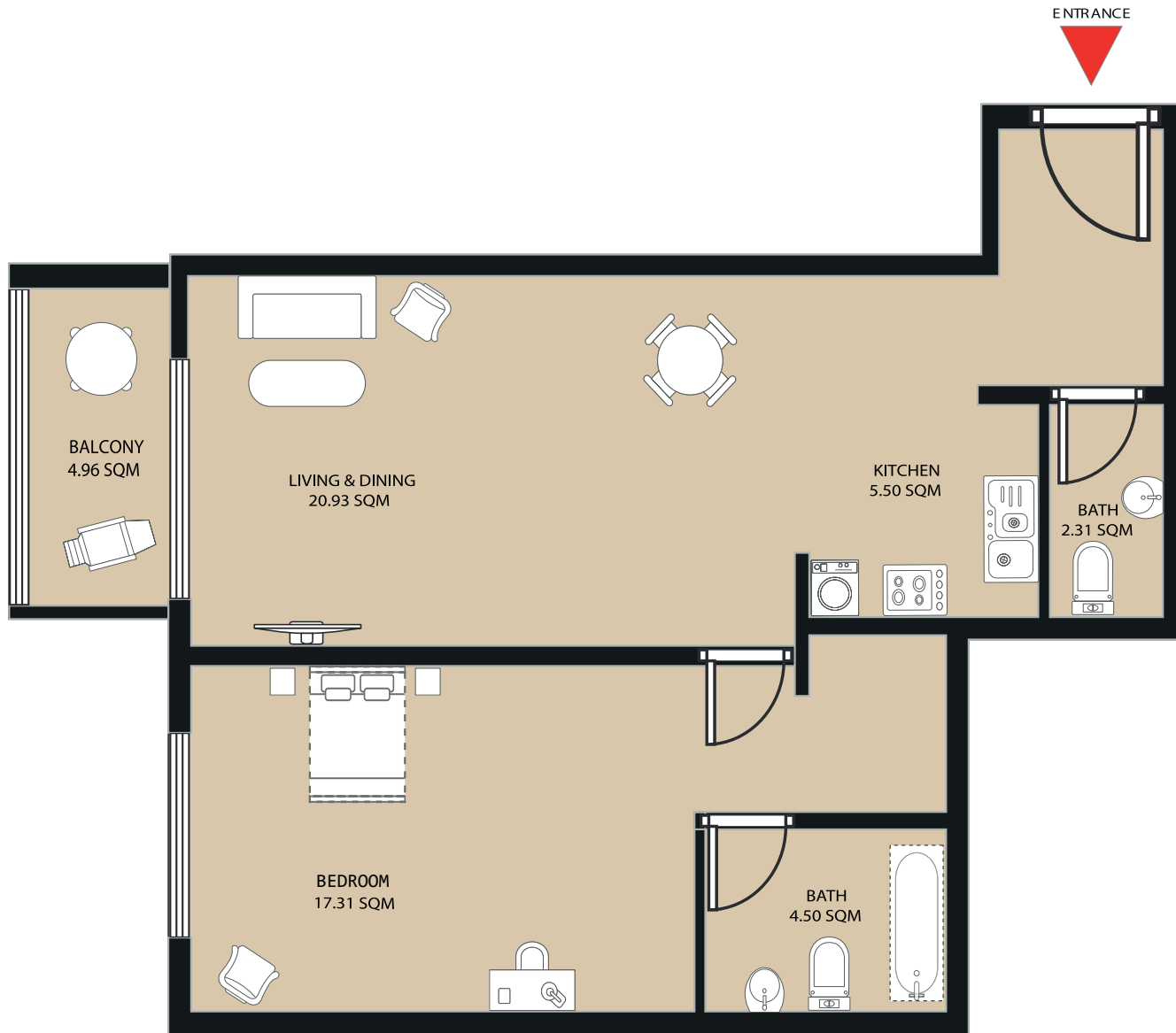
TOTAL GROSS AREA: 125.5 SQM

1. All dimensions are in imperial and metric, and measured from finish to finish excluding construction tolerances.
2. All materials, dimensions, and drawings are approximate only.
3. Information is subject to change without notice, at the developer's absolute discretion.
4. Actual area may vary from the stated area.
5. Drawings not to scale.
6. All images used are for illustrative purposes only and do not represent the actual size, features, specifications, fittings, and furnishings.
7. The developer reserves the right to make revisions/alterations, at its absolute discretion, without any liability whatsoever.

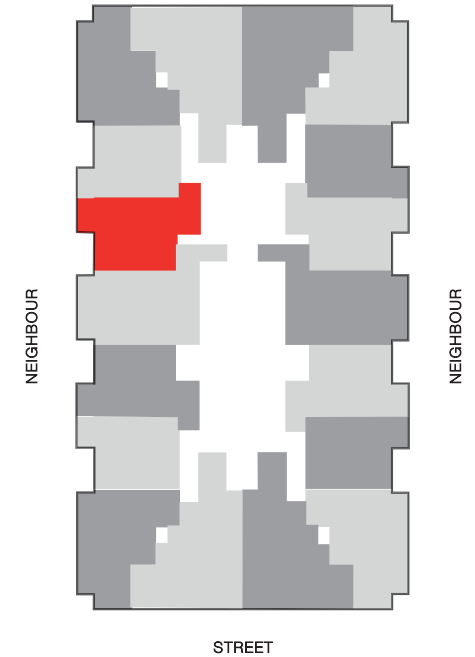
1 BEDROOM APARTMENT

BALCONY+LIVING ROOM+KITCHEN+2 BATHROOMS

17-SERIES



SHEIKH MOHAMMED BIN ZAYED ROAD E311



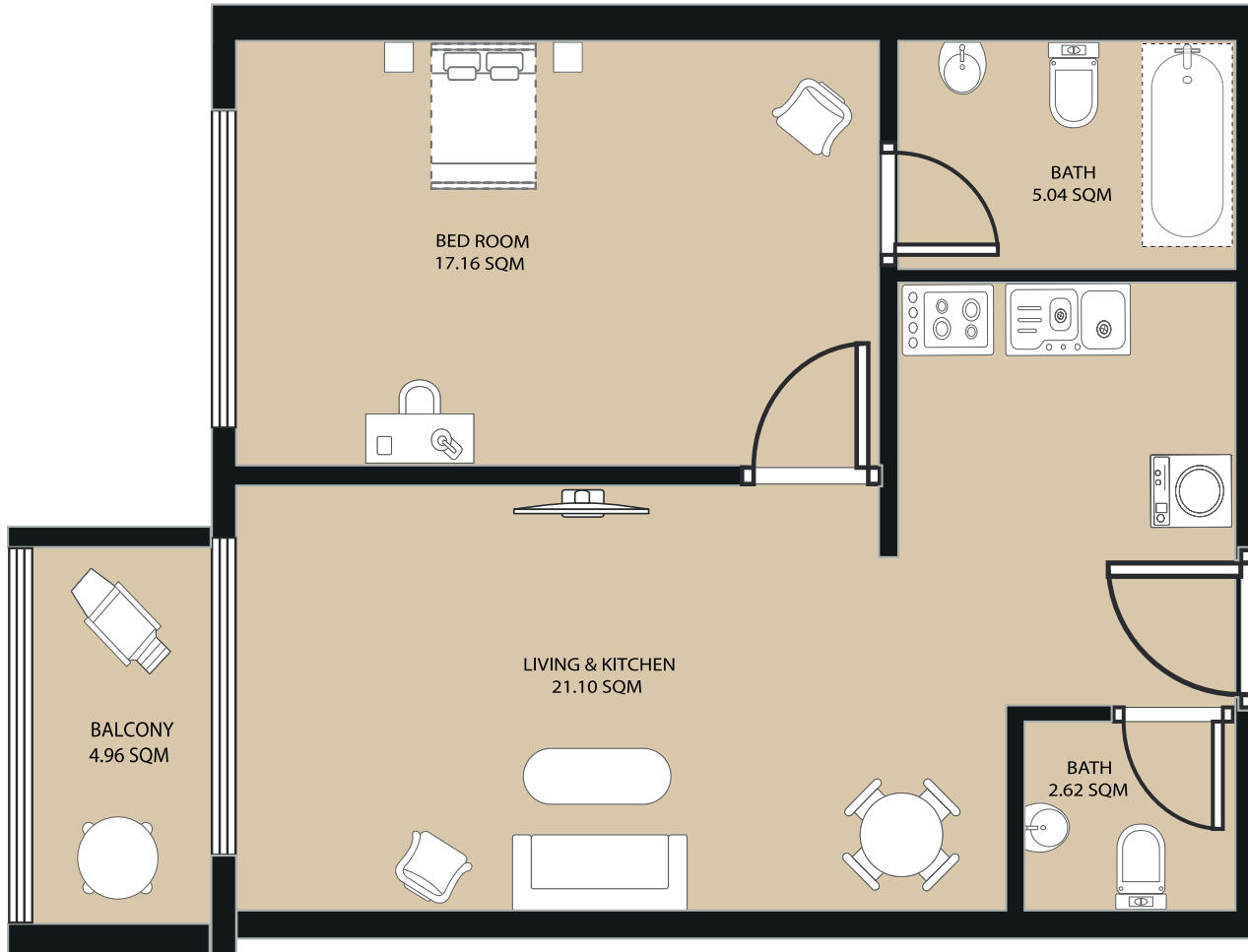
TOTAL GROSS AREA: 101.07 SQM

1. All dimensions are in imperial and metric, and measured from finish to finish excluding construction tolerances.
2. All materials, dimensions, and drawings are approximate only.
3. Information is subject to change without notice, at the developer's absolute discretion.
4. Actual area may vary from the stated area.
5. Drawings not to scale.
6. All images used are for illustrative purposes only and do not represent the actual size, features, specifications, fittings, and furnishings.
7. The developer reserves the right to make revisions/alterations, at its absolute discretion, without any liability whatsoever.

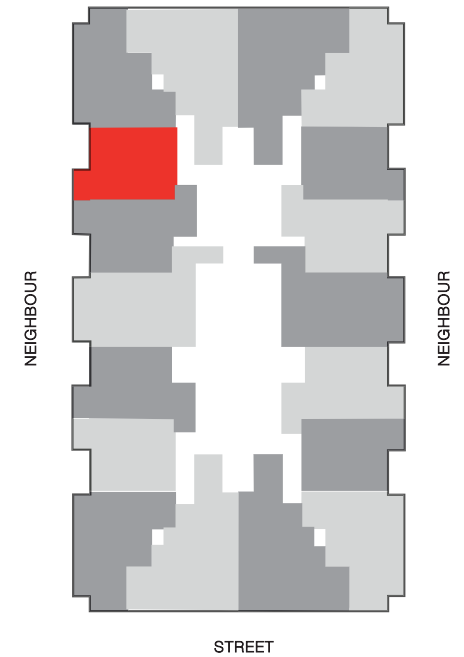
1 BEDROOM APARTMENT

BALCONY+LIVING ROOM+KITCHEN+2 BATHROOMS

18-SERIES



SHEIKH MOHAMMED BIN ZAYED ROAD E311



TOTAL GROSS AREA: 89.06 SQM

1. All dimensions are in imperial and metric, and measured from finish to finish excluding construction tolerances.
2. All materials, dimensions, and drawings are approximate only.
3. Information is subject to change without notice, at the developer's absolute discretion.
4. Actual area may vary from the stated area.
5. Drawings not to scale.
6. All images used are for illustrative purposes only and do not represent the actual size, features, specifications, fittings, and furnishings.
7. The developer reserves the right to make revisions/alterations, at its absolute discretion, without any liability whatsoever.



ROSE TOWER

EMIRATES CITY - AJMAN

A PROJECT BY



REAL ESTATE

Over the last 10 years, GJ Real Estate has delivered 15 high-quality real estate projects in Ajman and the Northern Emirates. Our priority is to create living spaces that offer an exceptional quality of life to our customers. It's made us one of the premier luxury real estate developers in the UAE.

Our projects are designed and built to industry-leading standards. We work with the best of partners, from architects and interior designers to all the specialist contractors that are involved in the construction of large projects.