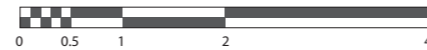




CITRINE RESIDENCES

BUILDING	CITRINE - 1BR
1 BEDROOM	TYPE A
UNIT NO.	105,106,107,108,109, 205,206,207,208,209, 305,306,307,308,309, 405,406,407,408,409, 505,506,507,508,509, 605,606,607,608,609, 705,706,707,708,709, 804,805
SUITE AREA.	63m² (678 sq.ft)
BALCONY AREA.	6 m² (64 sq.ft)
TOTAL AREA	69 m² (742 sq.ft)



Level 01 - 07



Level 08



جزيرة مريم
MARYAM ISLAND
SHARJAH

Disclaimer:

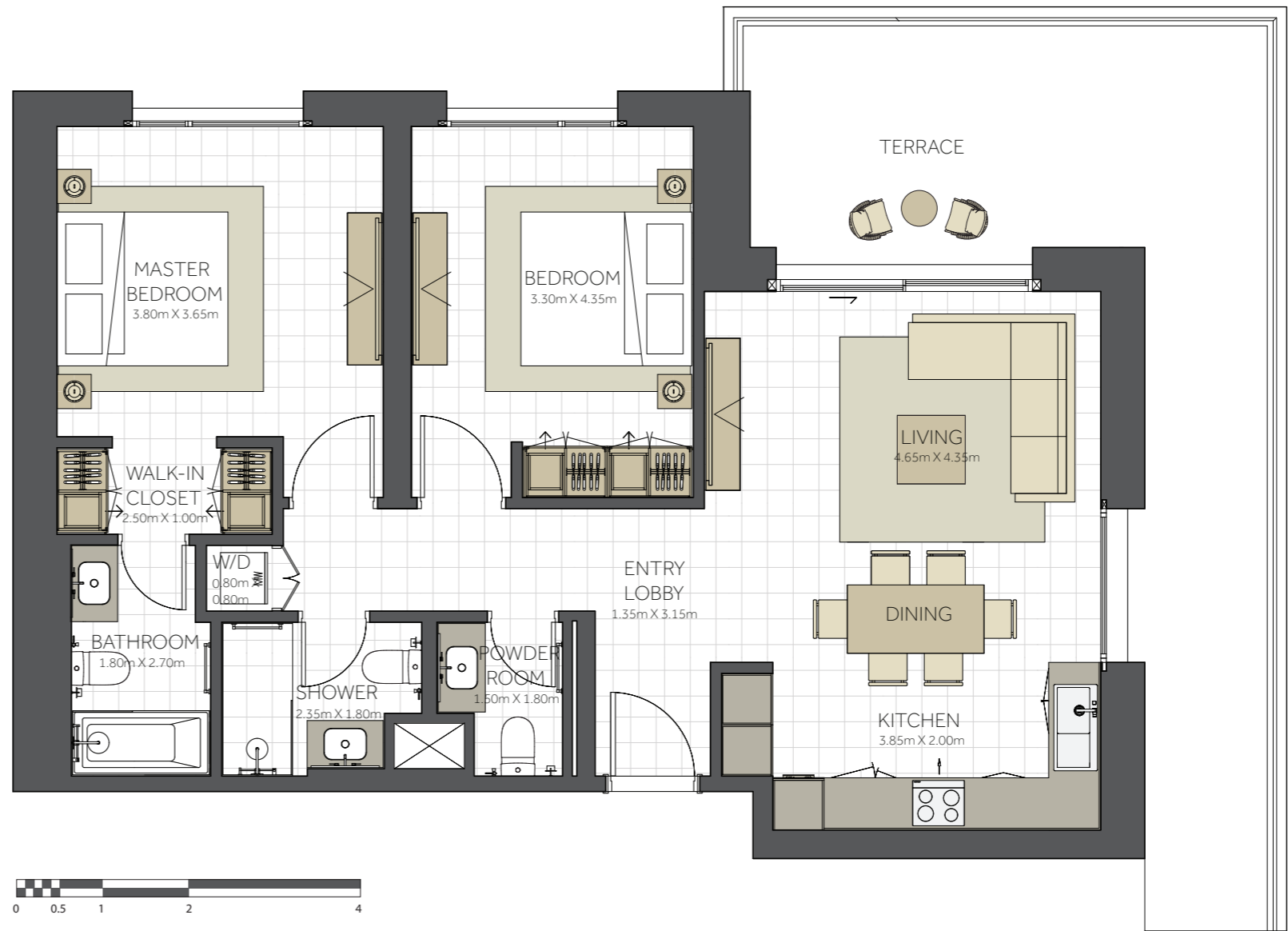
1. All room dimensions are measured to structural elements and exclude all finishes and construction tolerances. 2. All dimensions have been provided by our consultant architects. 3. All materials, dimensions and drawings are approximate. Information is subject to change without notice. 4. Actual suite area may vary from the stated area. Drawings not to scale. The developer reserves the right to make revisions. 5. Calculation of suite area is measured as the area bounded by the centre line of the demising or partition walls separating one unit from another unit, the exterior face of all exterior walls, and the exterior face of the corridor wall enclosing the adjoining unit. 6. Calculation of balcony area is measured as the area bounded by the centre line of the demising or partition walls separating one unit from another unit, the outmost face of the enclosing guard and the external face of the unit adjoining the balcony. 7. The units are measured at typical floor in the building. Columns may vary in size depending on the floor level.



سيترين

CITRINE RESIDENCES

BUILDING	CITRINE - 2BR
2 BEDROOM	TYPE A
UNIT NO.	104
SUITE AREA.	97m ² (1.044 sq.ft)
TERRACE AREA.	28 m ² (301 sq.ft)
TOTAL AREA	125 m ² (1.345 sq.ft)



Level 01

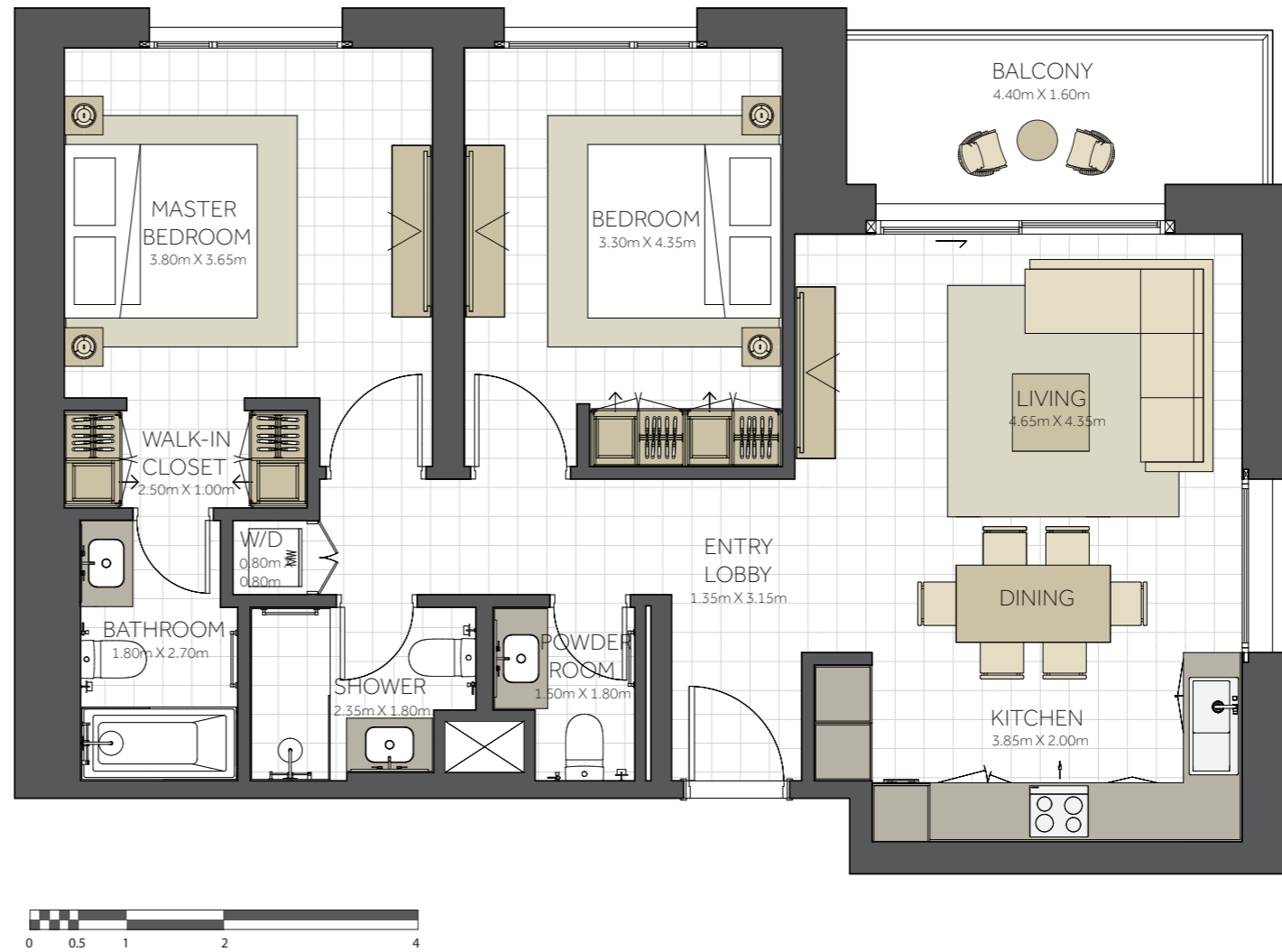
Disclaimer:

1. All room dimensions are measured to structural elements and exclude all finishes and construction tolerances. 2. All dimensions have been provided by our consultant architects. 3. All materials, dimensions and drawings are approximate. Information is subject to change without notice. 4. Actual suite area may vary from the stated area. Drawings not to scale. The developer reserves the right to make revisions. 5. Calculation of suite area is measured as the area bounded by the centre line of the demising or partition walls separating one unit from another unit, the exterior face of all exterior walls, and the exterior face of the corridor wall enclosing the adjoining unit. 6. Calculation of balcony area is measured as the area bounded by the centre line of the demising or partition walls separating one unit from another unit, the outmost face of the enclosing guard and the external face of the unit adjoining the balcony. 7. The units are measured at typical floor in the building. Columns may vary in size depending on the floor level.



CITRINE RESIDENCES

BUILDING	CITRINE - 2BR
2 BEDROOM	TYPE A
UNIT NO.	204, 304, 404, 504, 604, 704
SUITE AREA.	97m ² (1.044 sq.ft)
BALCONY AREA.	8 m ² (86 sq.ft)
TOTAL AREA	105 m ² (1.130 sq.ft)



Level 02 - 07



جزيرة مريم
MARYAM ISLAND
SHARJAH

Disclaimer:

1. All room dimensions are measured to structural elements and exclude all finishes and construction tolerances. 2. All dimensions have been provided by our consultant architects. 3. All materials, dimensions and drawings are approximate. Information is subject to change without notice. 4. Actual suite area may vary from the stated area. Drawings not to scale. The developer reserves the right to make revisions. 5. Calculation of suite area is measured as the area bounded by the centre line of the demising or partition walls separating one unit from another unit, the exterior face of all exterior walls, and the exterior face of the corridor wall enclosing the adjoining unit. 6. Calculation of balcony area is measured as the area bounded by the centre line of the demising or partition walls separating one unit from another unit, the outmost face of the enclosing guard and the external face of the unit adjoining the balcony. 7. The units are measured at typical floor in the building. Columns may vary in size depending on the floor level.



CITRINE RESIDENCES

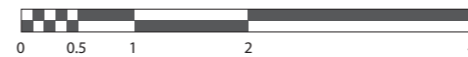
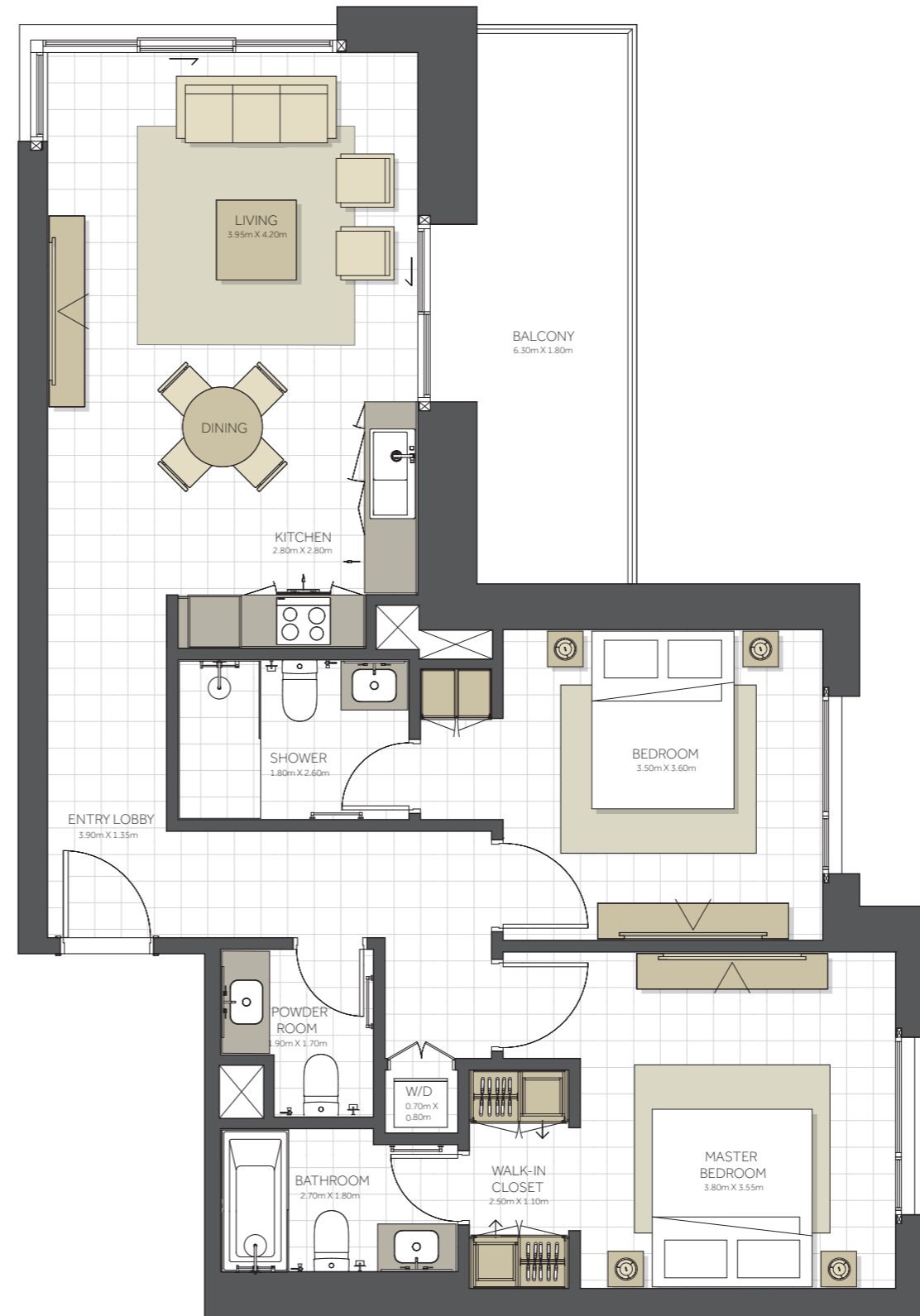
BUILDING	CITRINE - 2BR
2 BEDROOM	TYPE B
UNIT NO.	110,210,310,410, 510,610,710 808,907,1005
SUITE AREA.	100 m² (1.076 sq.ft)
BALCONY AREA.	12 m² (129 sq.ft)
TOTAL AREA	112 m² (1.205 sq.ft)

Level 01 - 07

Level 08

Level 09

Level 10



جزيرة مريم
MARYAM ISLAND
SHARJAH

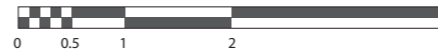
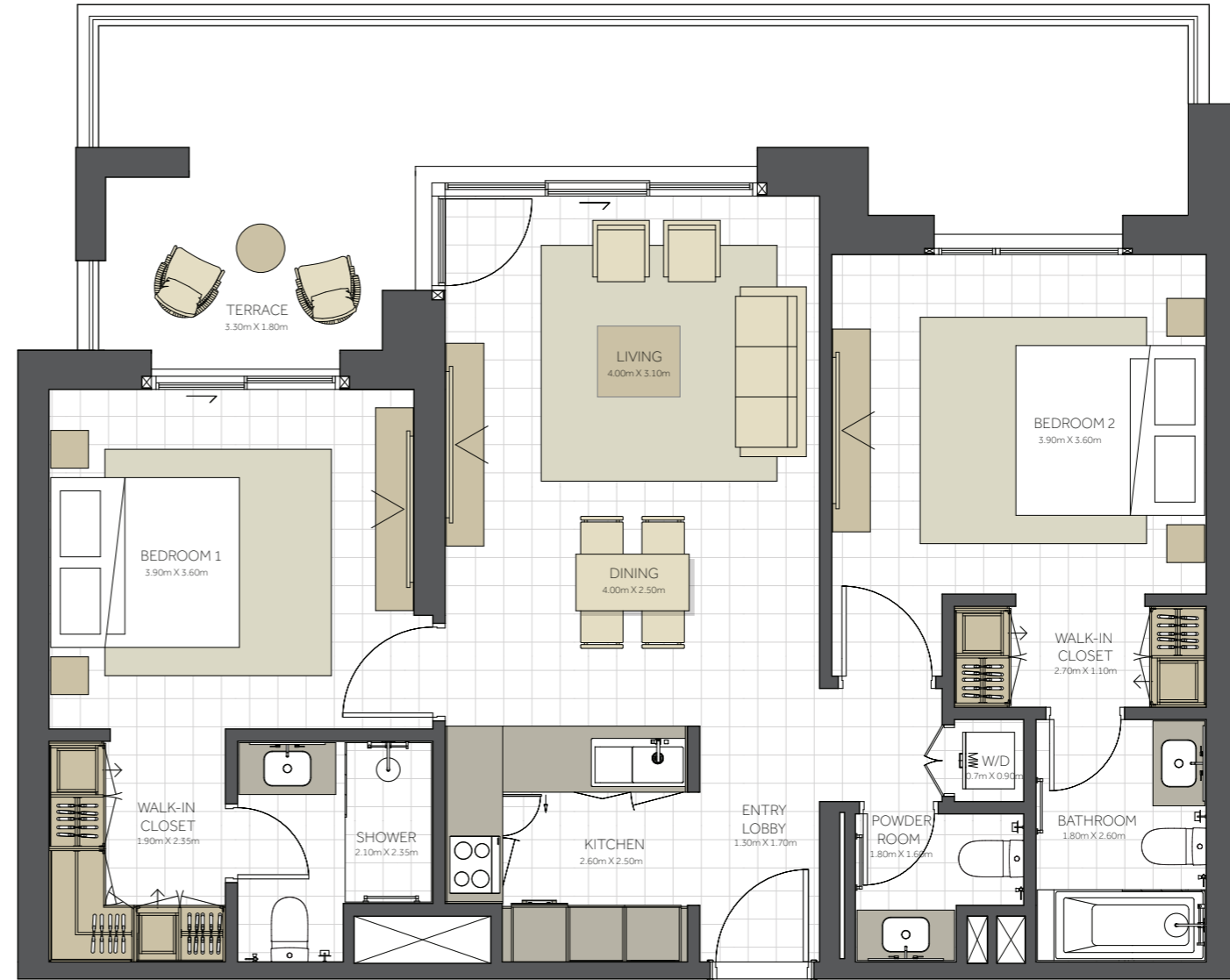
Disclaimer:

1. All room dimensions are measured to structural elements and exclude all finishes and construction tolerances. 2. All dimensions have been provided by our consultant architects. 3. All materials, dimensions and drawings are approximate. Information is subject to change without notice. 4. Actual suite area may vary from the stated area. Drawings not to scale. The developer reserves the right to make revisions. 5. Calculation of suite area is measured as the area bounded by the centre line of the demising or partition walls separating one unit from another unit, the exterior face of all exterior walls, and the exterior face of the corridor wall enclosing the adjoining unit. 6. Calculation of balcony area is measured as the area bounded by the centre line of the demising or partition walls separating one unit from another unit, the outmost face of the enclosing guard and the external face of the unit adjoining the balcony. 7. The units are measured at typical floor in the building. Columns may vary in size depending on the floor level.



CITRINE RESIDENCES

BUILDING	CITRINE - 2 BR
2 BEDROOM	TYPE C
UNIT NO.	101
SUITE AREA.	98m ² (1.055 sq.ft)
TERRACE AREA.	27m ² (290 sq.ft)
TOTAL AREA	125m ² (1.345 sq.ft)



Level 01



جزيرة مريم
MARYAM ISLAND
SHARJAH

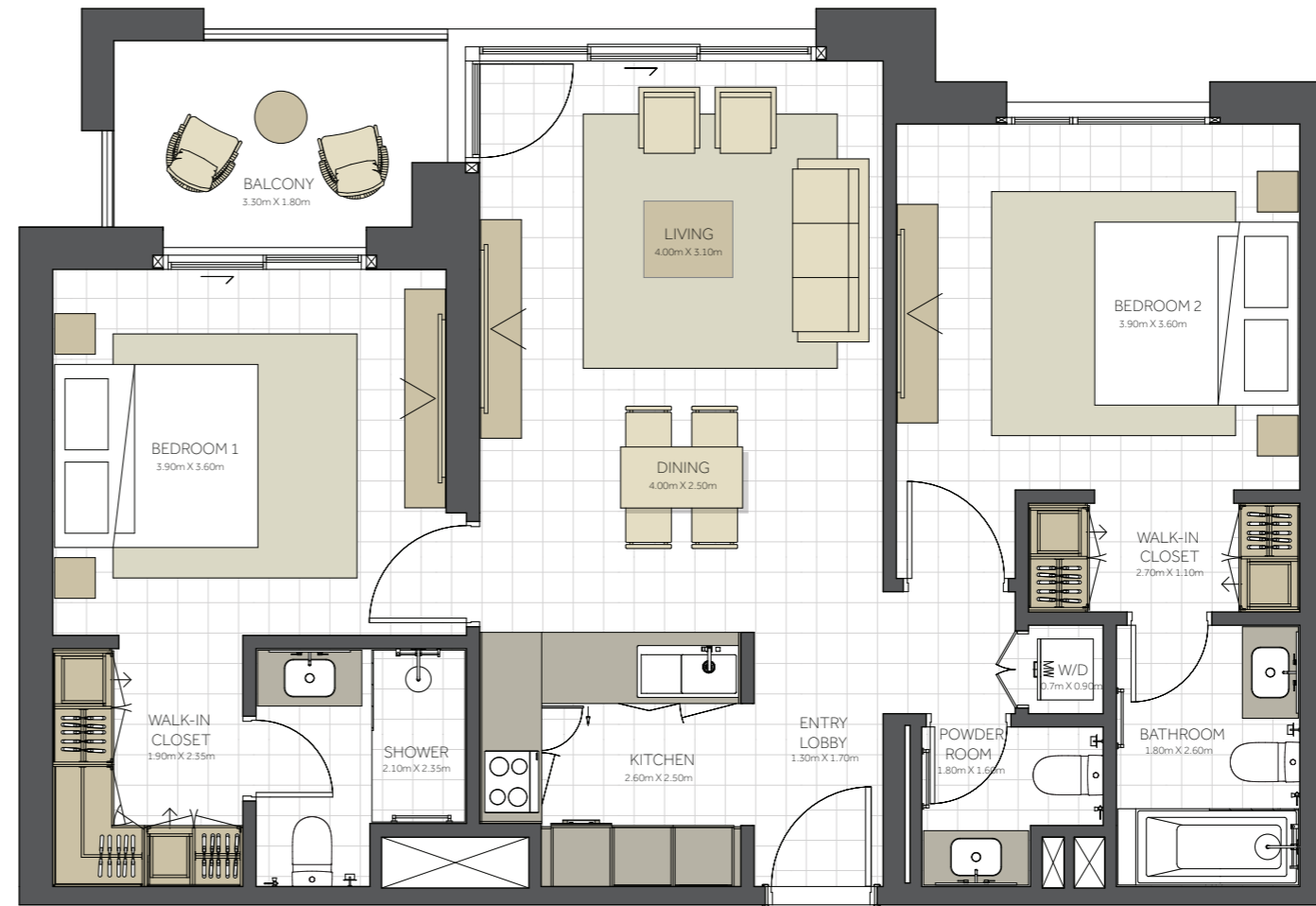
Disclaimer:

1. All room dimensions are measured to structural elements and exclude all finishes and construction tolerances. 2. All dimensions have been provided by our consultant architects. 3. All materials, dimensions and drawings are approximate. Information is subject to change without notice. 4. Actual suite area may vary from the stated area. Drawings not to scale. The developer reserves the right to make revisions. 5. Calculation of suite area is measured as the area bounded by the centre line of the demising or partition walls separating one unit from another unit, the exterior face of all exterior walls, and the exterior face of the corridor wall enclosing the adjoining unit. 6. Calculation of balcony area is measured as the area bounded by the centre line of the demising or partition walls separating one unit from another unit, the outermost face of the enclosing guard and the external face of the unit adjoining the balcony. 7. The units are measured at typical floor in the building. Columns may vary in size depending on the floor level.



CITRINE RESIDENCES

BUILDING	CITRINE - 2 BR
2 BEDROOM	TYPE C
UNIT NO.	201, 301, 401, 501, 601, 701, 801, 901, 1001
SUITE AREA.	98m ² (1.055 sq.ft)
BALCONY AREA.	6m ² (64 sq.ft)
TOTAL AREA	104m ² (1.120 sq.ft)



Level 02 - 07



Level 08



Level 09



Level 10



جزيرة مريم
MARYAM ISLAND
SHARJAH

Disclaimer:

1. All room dimensions are measured to structural elements and exclude all finishes and construction tolerances. 2. All dimensions have been provided by our consultant architects. 3. All materials, dimensions and drawings are approximate. Information is subject to change without notice. 4. Actual suite area may vary from the stated area. Drawings not to scale. The developer reserves the right to make revisions. 5. Calculation of suite area is measured as the area bounded by the centre line of the demising or partition walls separating one unit from another unit, the exterior face of all exterior walls, and the exterior face of the corridor wall enclosing the adjoining unit. 6. Calculation of balcony area is measured as the area bounded by the centre line of the demising or partition walls separating one unit from another unit, the outmost face of the enclosing guard and the external face of the unit adjoining the balcony. 7. The units are measured at typical floor in the building. Columns may vary in size depending on the floor level.

سيترين

CITRINE RESIDENCES

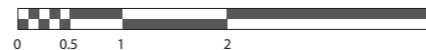
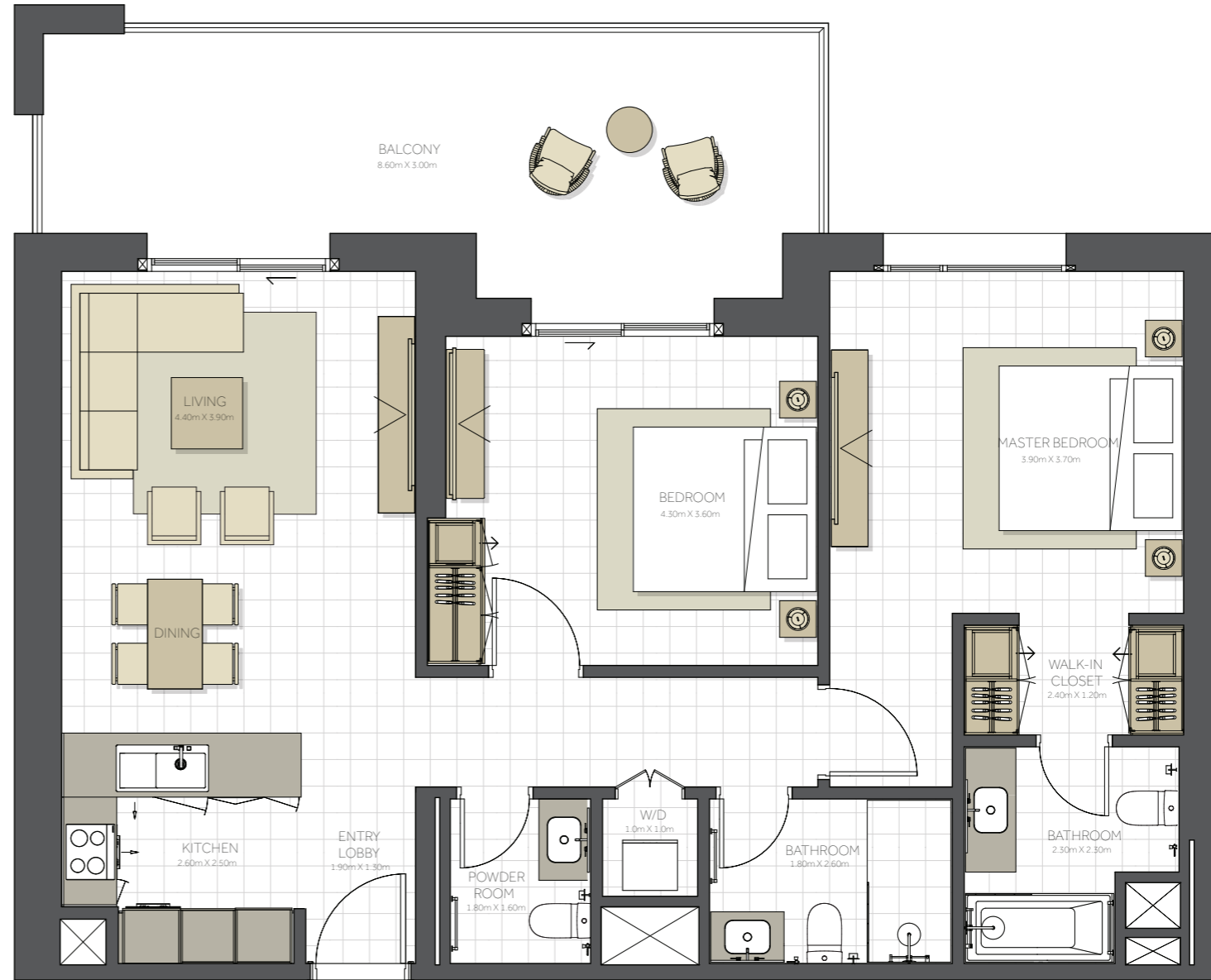
BUILDING	CITRINE - 2 BR
2 BEDROOM	TYPE D
UNIT NO.	111,211,311, 411,511,611, 711,809,908, 1006
SUITE AREA.	98m² (1.055 sq.ft)
BALCONY AREA.	22 m² (237 sq.ft)
TOTAL AREA	120 m² (1.291 sq.ft)

Level 01 - 07

Level 08

Level 09

Level 10



جزيرة مريم
MARYAM ISLAND
SHARJAH

Disclaimer:

1. All room dimensions are measured to structural elements and exclude all finishes and construction tolerances. 2. All dimensions have been provided by our consultant architects. 3. All materials, dimensions and drawings are approximate. Information is subject to change without notice. 4. Actual suite area may vary from the stated area. Drawings not to scale. The developer reserves the right to make revisions. 5. Calculation of suite area is measured as the area bounded by the centre line of the demising or partition walls separating one unit from another unit, the exterior face of all exterior walls, and the exterior face of the corridor wall enclosing the adjoining unit. 6. Calculation of balcony area is measured as the area bounded by the centre line of the demising or partition walls separating one unit from another unit, the outmost face of the enclosing guard and the external face of the unit adjoining the balcony. 7. The units are measured at typical floor in the building. Columns may vary in size depending on the floor level.



CITRINE RESIDENCES

BUILDING	CITRINE - 2 BR
2 BEDROOM	TYPE E
UNIT NO.	806,905,1003
SUITE AREA.	94m ² (1012 sq.ft)
BALCONY AREA.	12 m ² (129 sq.ft)
TOTAL AREA	106m ² (1.141 sq.ft)

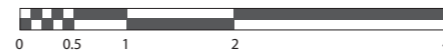
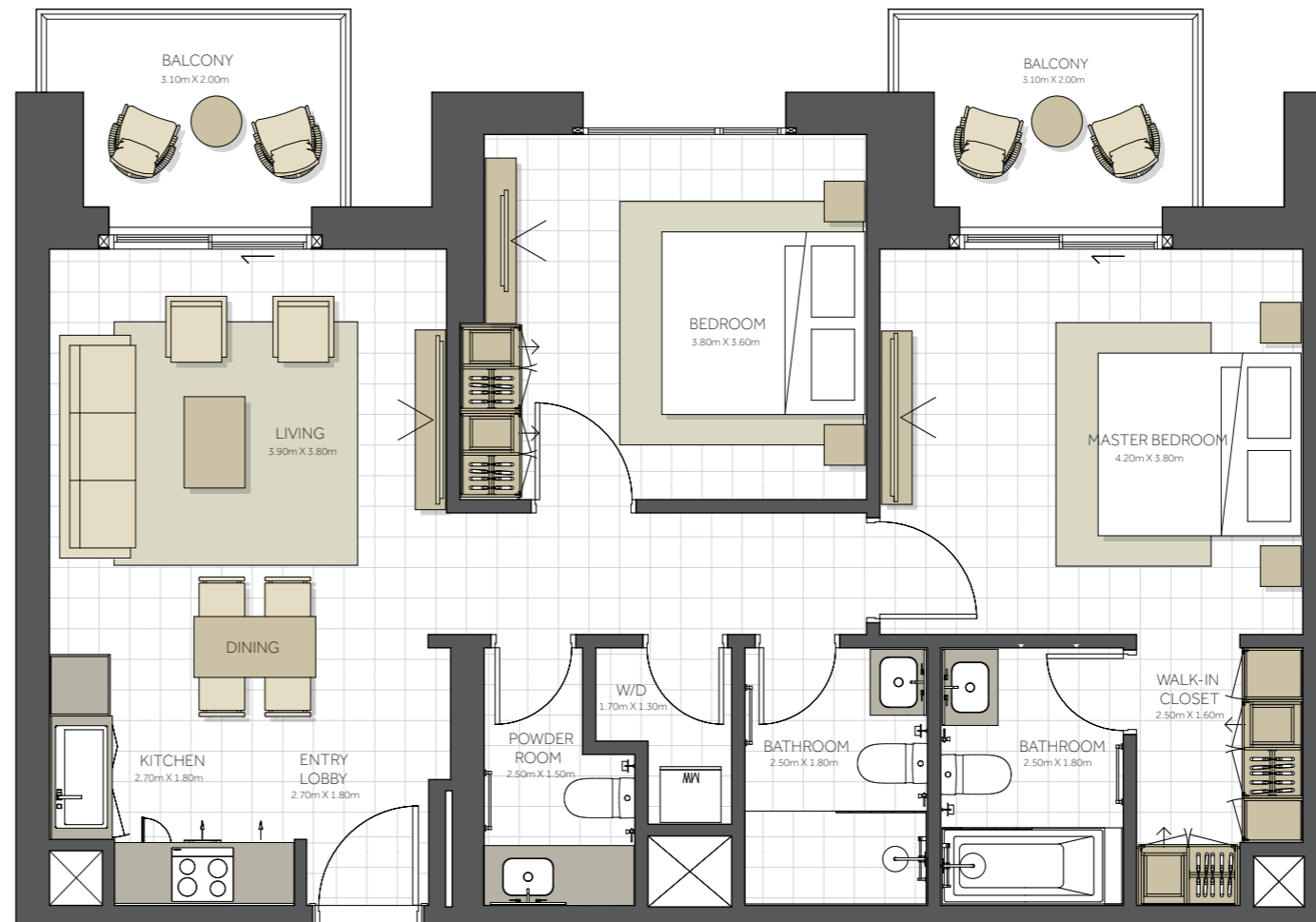
Level 08



Level 09



Level 10



جزيرة مريم
MARYAM ISLAND
SHARJAH

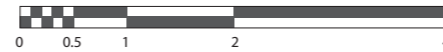
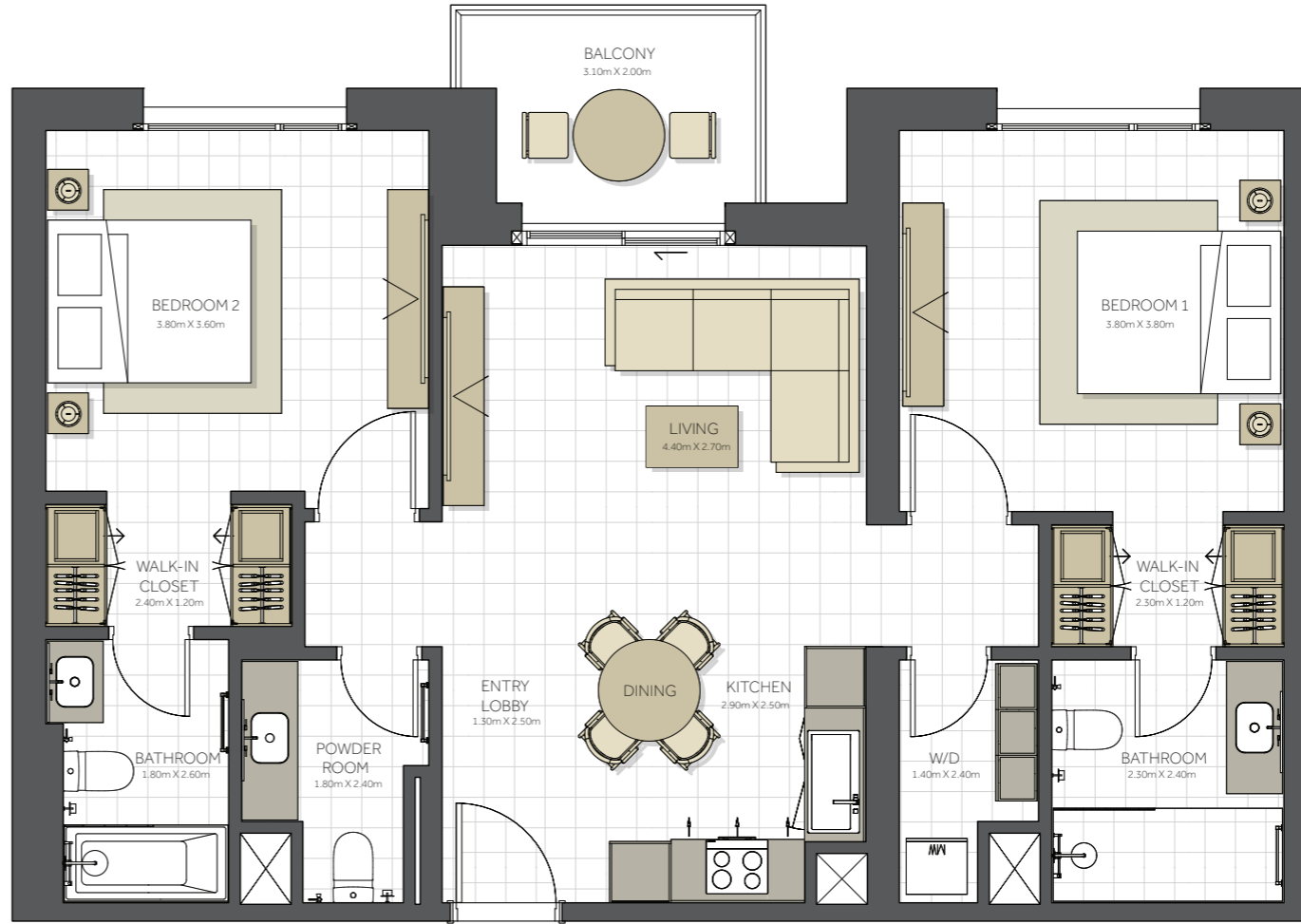
Disclaimer:

1. All room dimensions are measured to structural elements and exclude all finishes and construction tolerances. 2. All dimensions have been provided by our consultant architects. 3. All materials, dimensions and drawings are approximate. Information is subject to change without notice. 4. Actual suite area may vary from the stated area. Drawings not to scale. The developer reserves the right to make revisions. 5. Calculation of suite area is measured as the area bounded by the centre line of the demising or partition walls separating one unit from another unit, the exterior face of all exterior walls, and the exterior face of the corridor wall enclosing the adjoining unit. 6. Calculation of balcony area is measured as the area bounded by the centre line of the demising or partition walls separating one unit from another unit, the outmost face of the enclosing guard and the external face of the unit adjoining the balcony. 7. The units are measured at typical floor in the building. Columns may vary in size depending on the floor level.



CITRINE RESIDENCES

BUILDING	CITRINE - 2 BR
2 BEDROOM	TYPE F
UNIT NO.	807,906,1004
SUITE AREA.	96m ² (1.033 sq.ft)
BALCONY AREA.	6m ² (64 sq.ft)
TOTAL AREA	102m ² (1.098 sq.ft)



Level 08



Level 09



Level 10



جزيرة مريم
MARYAM ISLAND
SHARJAH

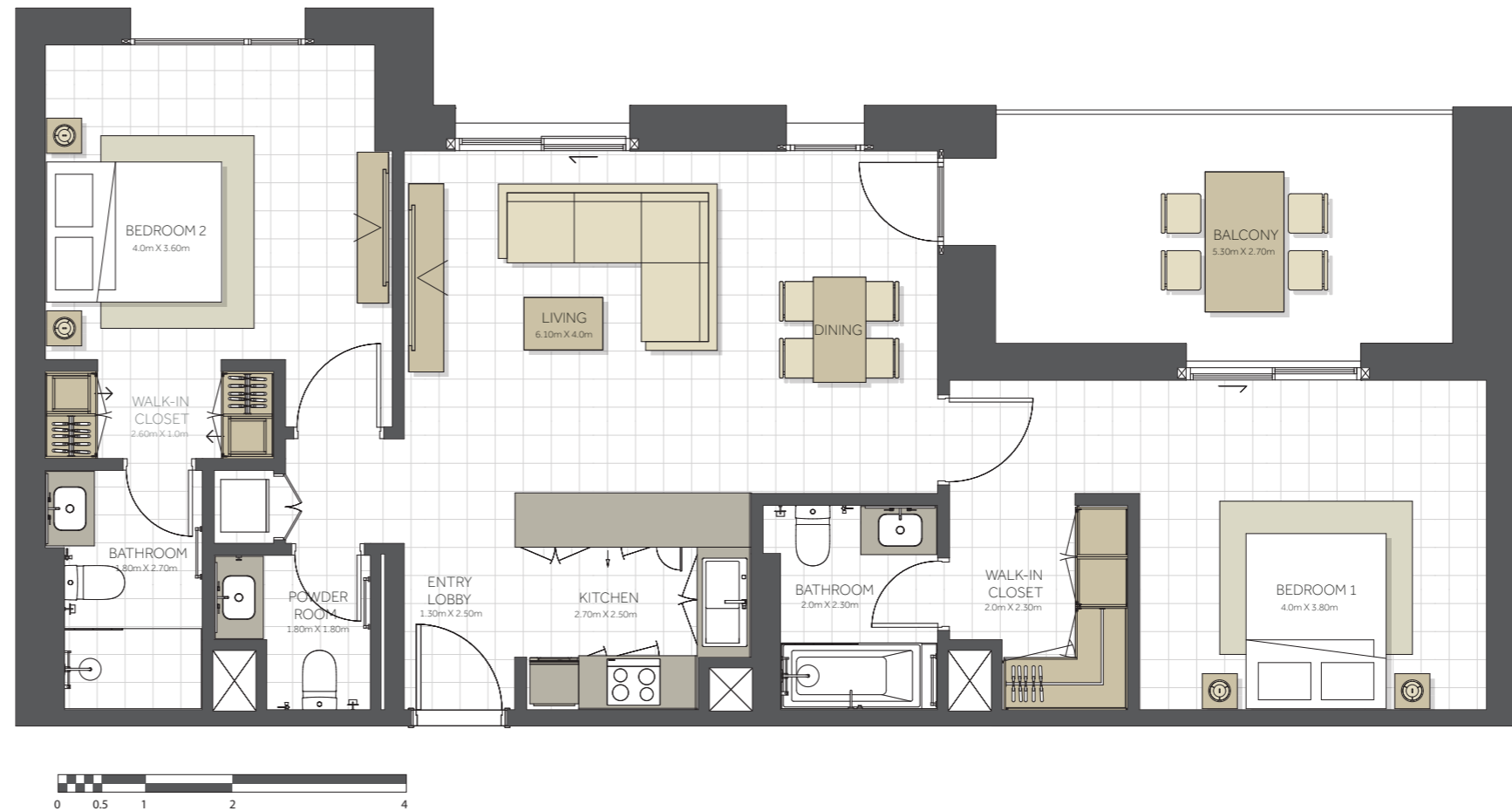
Disclaimer:

1. All room dimensions are measured to structural elements and exclude all finishes and construction tolerances. 2. All dimensions have been provided by our consultant architects. 3. All materials, dimensions and drawings are approximate. Information is subject to change without notice. 4. Actual suite area may vary from the stated area. Drawings not to scale. The developer reserves the right to make revisions. 5. Calculation of suite area is measured as the area bounded by the centre line of the demising or partition walls separating one unit from another unit, the exterior face of all exterior walls, and the exterior face of the corridor wall enclosing the adjoining unit. 6. Calculation of balcony area is measured as the area bounded by the centre line of the demising or partition walls separating one unit from another unit, the outmost face of the enclosing guard and the external face of the unit adjoining the balcony. 7. The units are measured at typical floor in the building. Columns may vary in size depending on the floor level.



CITRINE RESIDENCES

BUILDING	CITRINE - 2 BR
2 BEDROOM	TYPE G
UNIT NO.	904,1002
SUITE AREA.	105m² (1.130 sq.ft)
BALCONY AREA.	15m² (161 sq.ft)
TOTAL AREA	120m² (1.291 sq.ft)



Level 09

Level 10



جزيرة مريم
MARYAM ISLAND
SHARJAH

Disclaimer:

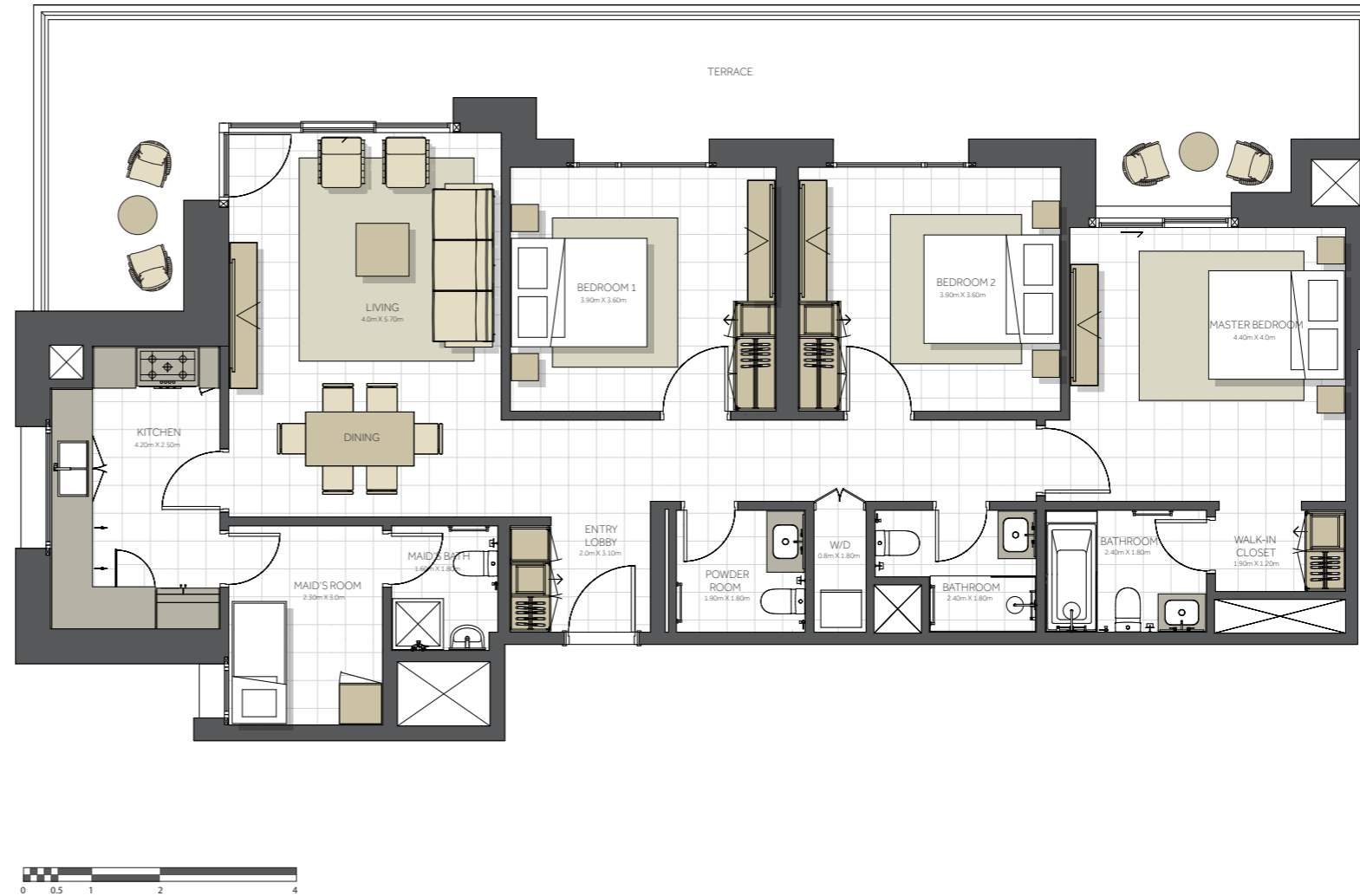
1. All room dimensions are measured to structural elements and exclude all finishes and construction tolerances. 2. All dimensions have been provided by our consultant architects. 3. All materials, dimensions and drawings are approximate. Information is subject to change without notice. 4. Actual suite area may vary from the stated area. Drawings not to scale. The developer reserves the right to make revisions. 5. Calculation of suite area is measured as the area bounded by the centre line of the demising or partition walls separating one unit from another unit, the exterior face of all exterior walls, and the exterior face of the corridor wall enclosing the adjoining unit. 6. Calculation of balcony area is measured as the area bounded by the centre line of the demising or partition walls separating one unit from another unit, the outmost face of the enclosing guard and the external face of the unit adjoining the balcony. 7. The units are measured at typical floor in the building. Columns may vary in size depending on the floor level.





CITRINE RESIDENCES

BUILDING	CITRINE - 3 BR
3 BEDROOM	TYPE A
UNIT NO.	103
SUITE AREA.	140m ² (1.507 sq.ft)
TERRACE AREA.	48 m ² (516 sq.ft)
TOTAL AREA	188m ² (2.023sq.ft)



Level 01



جزيرة مريم
MARYAM ISLAND
SHARJAH

Disclaimer:

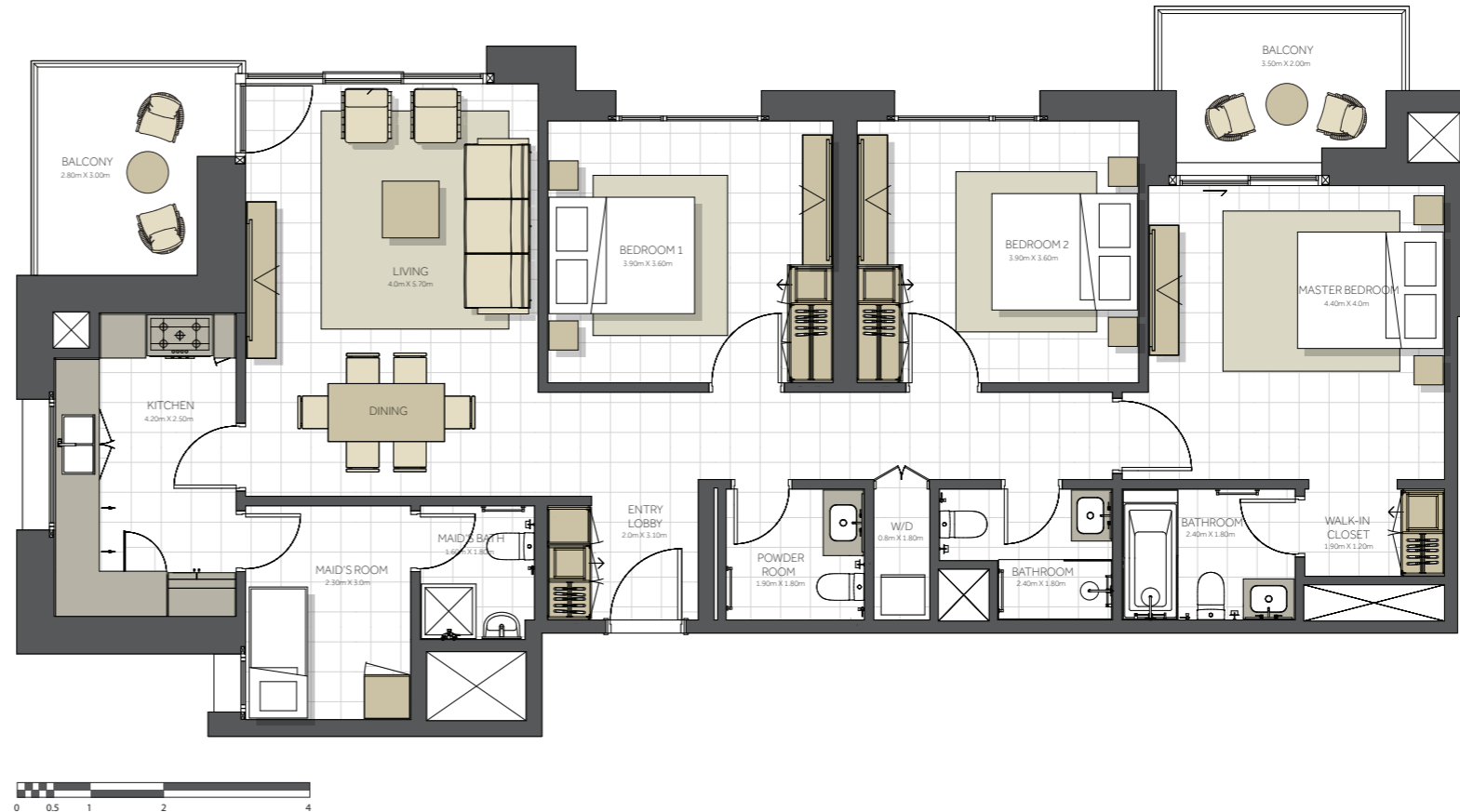
1. All room dimensions are measured to structural elements and exclude all finishes and construction tolerances. 2. All dimensions have been provided by our consultant architects. 3. All materials, dimensions and drawings are approximate. Information is subject to change without notice. 4. Actual suite area may vary from the stated area. Drawings not to scale. The developer reserves the right to make revisions. 5. Calculation of suite area is measured as the area bounded by the centre line of the demising or partition walls separating one unit from another unit, the exterior face of all exterior walls, and the exterior face of the corridor wall enclosing the adjoining unit. 6. Calculation of balcony area is measured as the area bounded by the centre line of the demising or partition walls separating one unit from another unit, the outmost face of the enclosing guard and the external face of the unit adjoining the balcony. 7. The units are measured at typical floor in the building. Columns may vary in size depending on the floor level.





CITRINE RESIDENCES

BUILDING	CITRINE - 3 BR
3 BEDROOM	TYPE A
UNIT NO.	203, 303, 403, 503, 603, 703
SUITE AREA.	140m ² (1.507 sq.ft)
BALCONY AREA.	14 m ² (150 sq.ft)
TOTAL AREA	154 m ² (1.657 sq.ft)



Level 02 - 07



جزيرة مريم
MARYAM ISLAND
SHARJAH

Disclaimer:

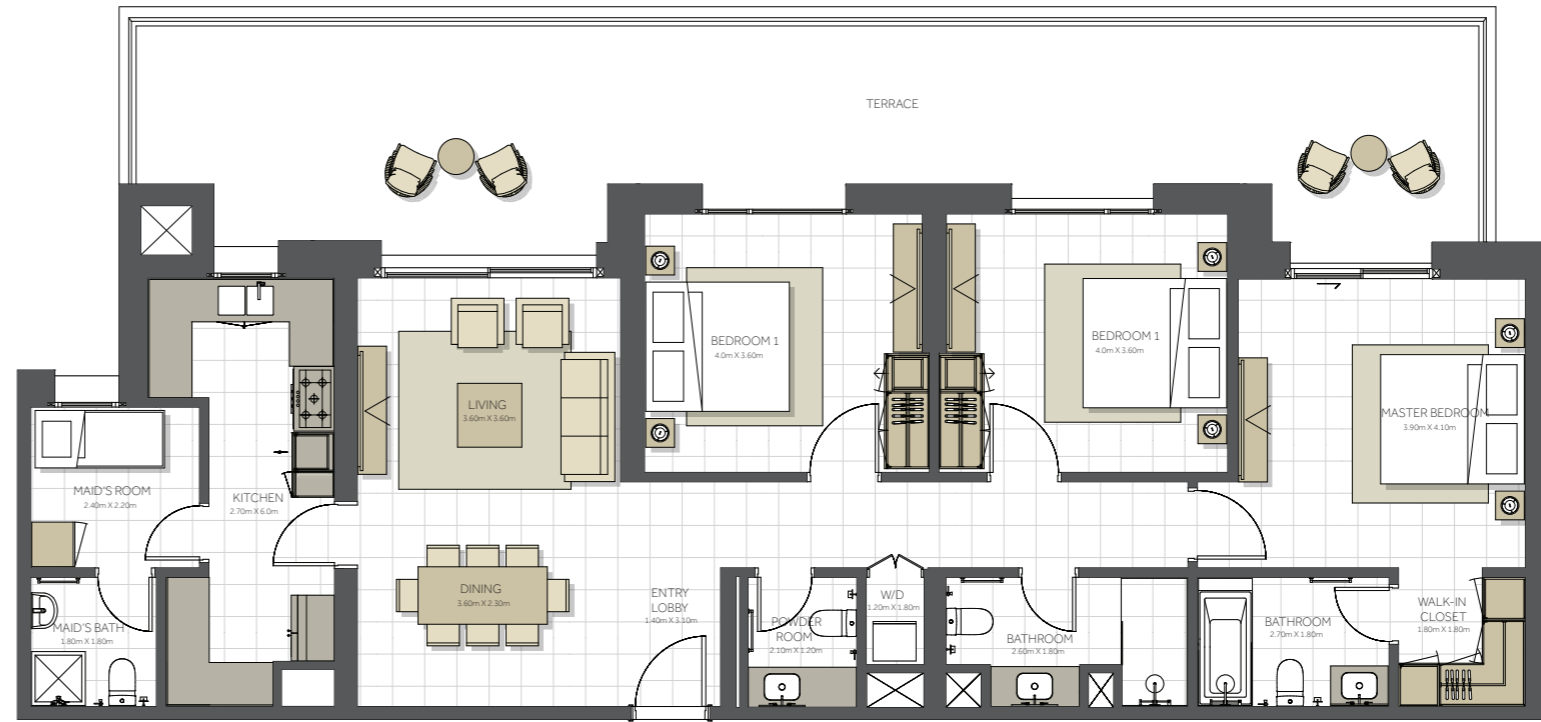
1. All room dimensions are measured to structural elements and exclude all finishes and construction tolerances. 2. All dimensions have been provided by our consultant architects. 3. All materials, dimensions and drawings are approximate. Information is subject to change without notice. 4. Actual suite area may vary from the stated area. Drawings not to scale. The developer reserves the right to make revisions. 5. Calculation of suite area is measured as the area bounded by the centre line of the demising or partition walls separating one unit from another unit, the exterior face of all exterior walls, and the exterior face of the corridor wall enclosing the adjoining unit. 6. Calculation of balcony area is measured as the area bounded by the centre line of the demising or partition walls separating one unit from another unit, the outmost face of the enclosing guard and the external face of the unit adjoining the balcony. 7. The units are measured at typical floor in the building. Columns may vary in size depending on the floor level.





CITRINE RESIDENCES

BUILDING	CITRINE - 3 BR
3 BEDROOM	TYPE C
UNIT NO.	102
SUITE AREA.	138m ² (1.485 sq.ft)
TEERACE AREA.	47m ² (506 sq.ft)
TOTAL AREA	185 m ² (1.991 sq.ft)



Level 01



جزيرة مريم
MARYAM ISLAND
SHARJAH

Disclaimer:

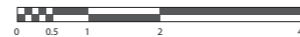
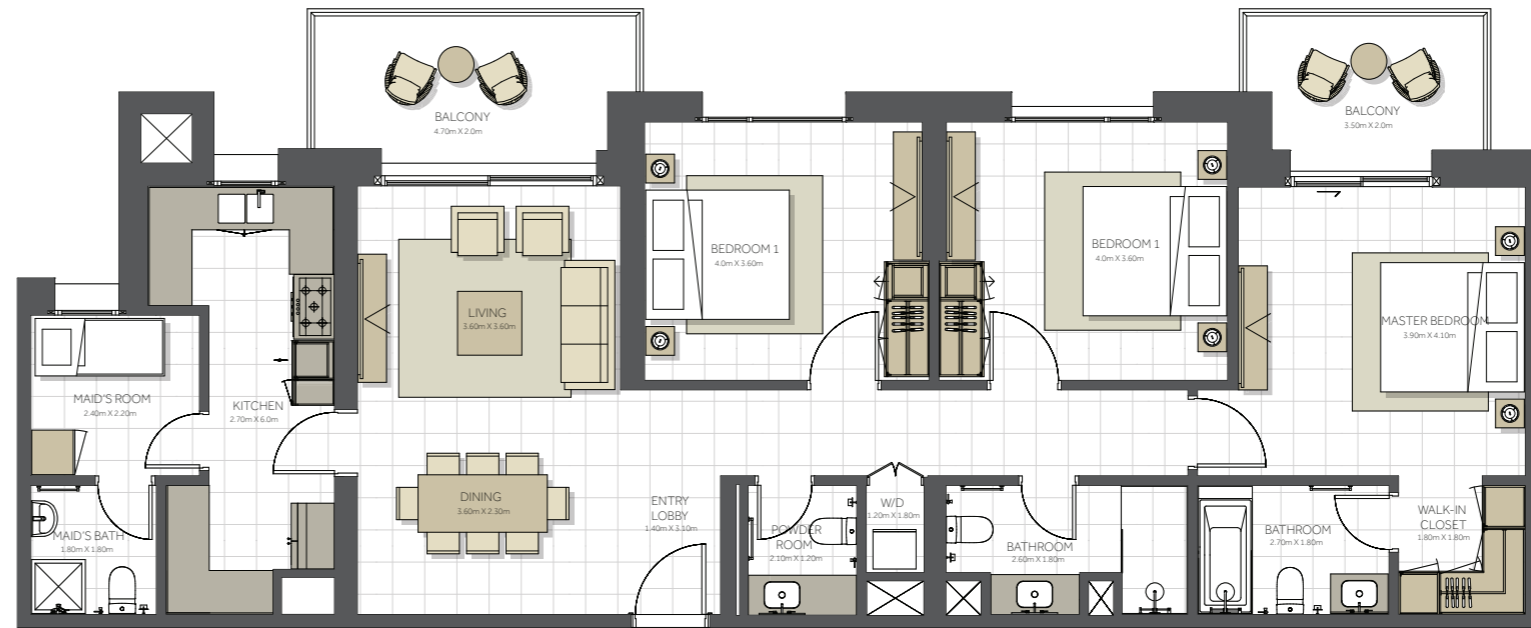
1. All room dimensions are measured to structural elements and exclude all finishes and construction tolerances. 2. All dimensions have been provided by our consultant architects. 3. All materials, dimensions and drawings are approximate. Information is subject to change without notice. 4. Actual suite area may vary from the stated area. Drawings not to scale. The developer reserves the right to make revisions. 5. Calculation of suite area is measured as the area bounded by the centre line of the demising or partition walls separating one unit from another unit, the exterior face of all exterior walls, and the exterior face of the corridor wall enclosing the adjoining unit. 6. Calculation of balcony area is measured as the area bounded by the centre line of the demising or partition walls separating one unit from another unit, the outmost face of the enclosing guard and the external face of the unit adjoining the balcony. 7. The units are measured at typical floor in the building. Columns may vary in size depending on the floor level.





CITRINE RESIDENCES

BUILDING	CITRINE - 3 BR
3 BEDROOM	TYPE C
UNIT NO.	202, 302, 402, 502, 602, 702
SUITE AREA.	138m ² (1.485 sq.ft)
BALCONY AREA.	16 m ² (172 sq.ft)
TOTAL AREA	154 m ² (1.657 sq.ft)



Level 02 - 07



جزيرة مريم
MARYAM ISLAND
SHARJAH

Disclaimer:

1. All room dimensions are measured to structural elements and exclude all finishes and construction tolerances. 2. All dimensions have been provided by our consultant architects. 3. All materials, dimensions and drawings are approximate. Information is subject to change without notice. 4. Actual suite area may vary from the stated area. Drawings not to scale. The developer reserves the right to make revisions. 5. Calculation of suite area is measured as the area bounded by the centre line of the demising or partition walls separating one unit from another unit, the exterior face of all exterior walls, and the exterior face of the corridor wall enclosing the adjoining unit. 6. Calculation of balcony area is measured as the area bounded by the centre line of the demising or partition walls separating one unit from another unit, the outmost face of the enclosing guard and the external face of the unit adjoining the balcony. 7. The units are measured at typical floor in the building. Columns may vary in size depending on the floor level.



CITRINE RESIDENCES

BUILDING	CITRINE - 3 BR
3 BEDROOM	TYPE D
UNIT NO.	113
SUITE AREA.	148m² (1.593 sq.ft)
TERRACE AREA.	53 m² (570 sq.ft)
TOTAL AREA	201 m² (2.163sq.ft)



Level 01



جزيرة مريم
MARYAM ISLAND
SHARJAH

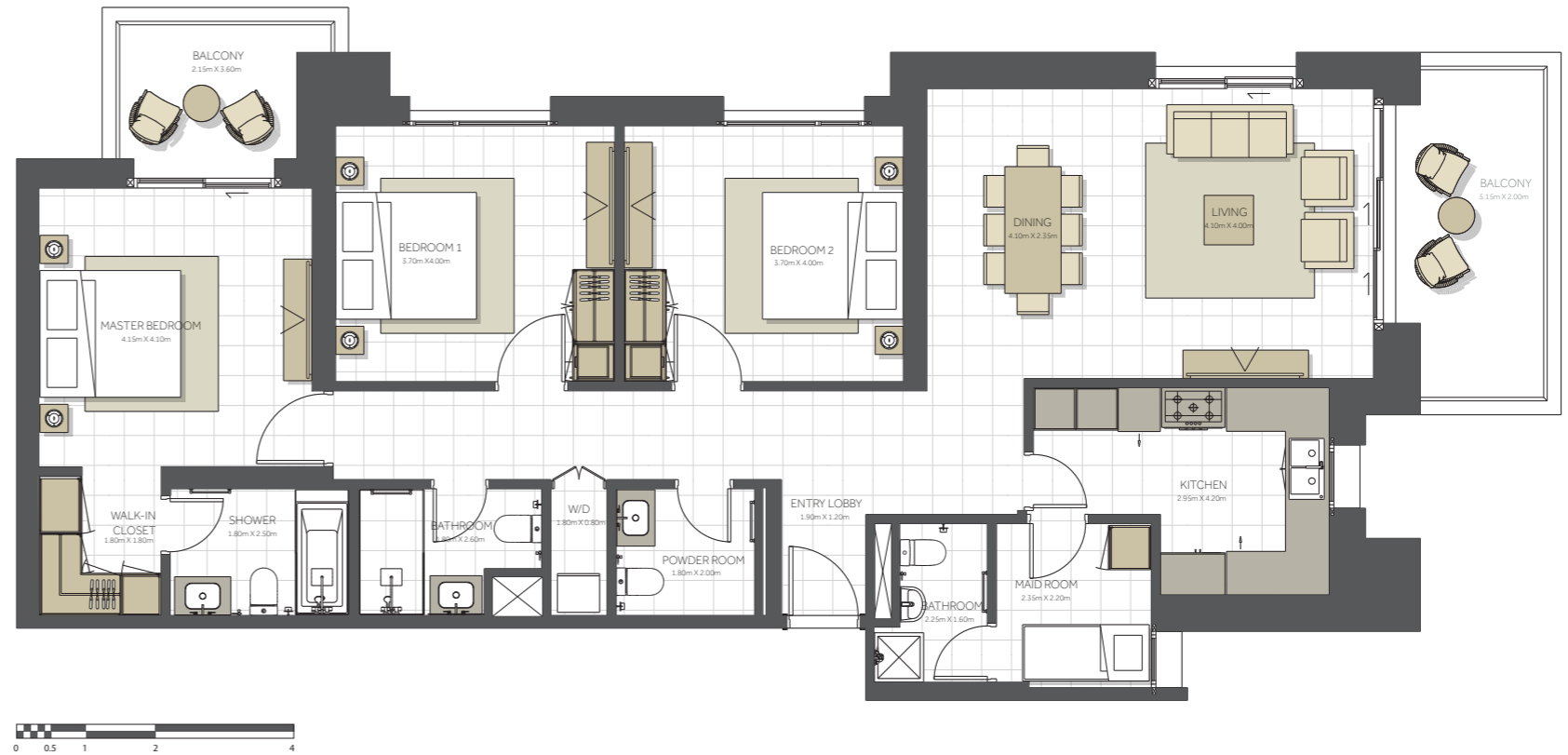
Disclaimer:

1. All room dimensions are measured to structural elements and exclude all finishes and construction tolerances. 2. All dimensions have been provided by our consultant architects. 3. All materials, dimensions and drawings are approximate. Information is subject to change without notice. 4. Actual suite area may vary from the stated area. Drawings not to scale. The developer reserves the right to make revisions. 5. Calculation of suite area is measured as the area bounded by the centre line of the demising or partition walls separating one unit from another unit, the exterior face of all exterior walls, and the exterior face of the corridor wall enclosing the adjoining unit. 6. Calculation of balcony area is measured as the area bounded by the centre line of the demising or partition walls separating one unit from another unit, the outmost face of the enclosing guard and the external face of the unit adjoining the balcony. 7. The units are measured at typical floor in the building. Columns may vary in size depending on the floor level.



CITRINE RESIDENCES

BUILDING	CITRINE - 3 BR
3 BEDROOM	TYPE D
UNIT NO.	112,212, 213, 312, 313, 412, 413, 512, 513, 612, 613, 712, 713, 810,811
SUITE AREA.	148m² (1.593 sq.ft)
BALCONY AREA.	16 m² (172 sq.ft)
TOTAL AREA	164 m² (1.765 sq.ft)



Level 01



Level 02 - 07

Level 08



جزيرة مريم
MARYAM ISLAND
SHARJAH

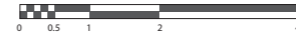
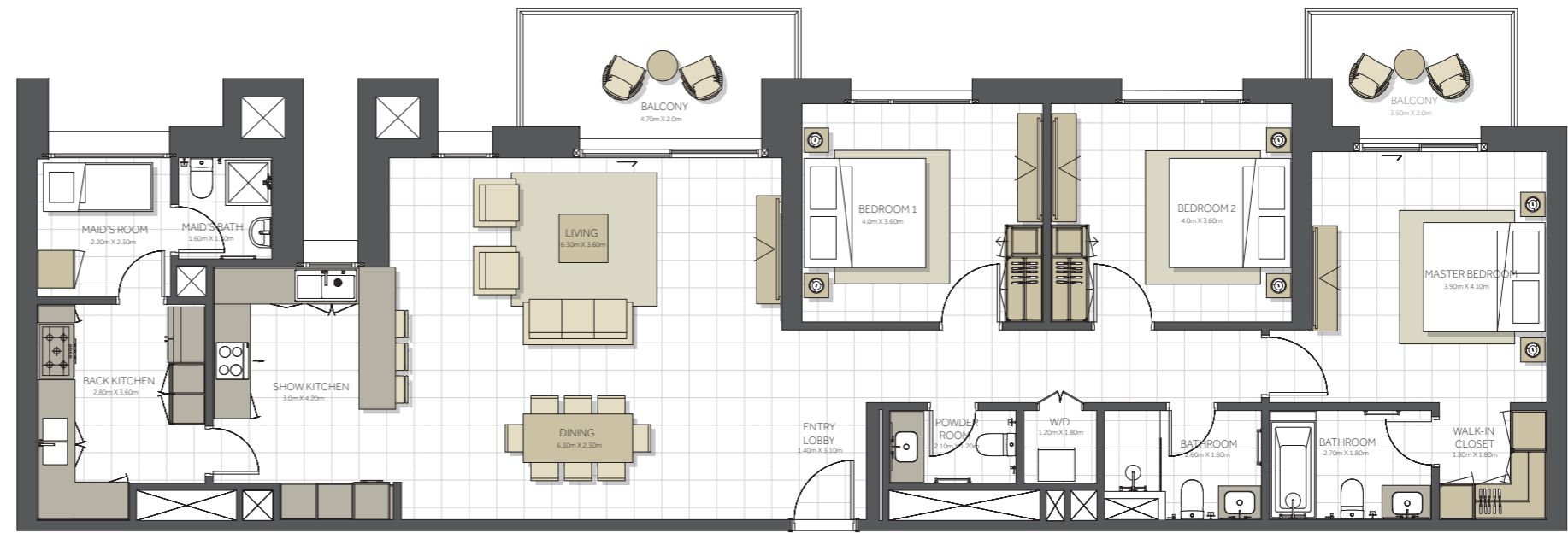
Disclaimer:

1. All room dimensions are measured to structural elements and exclude all finishes and construction tolerances. 2. All dimensions have been provided by our consultant architects. 3. All materials, dimensions and drawings are approximate. Information is subject to change without notice. 4. Actual suite area may vary from the stated area. Drawings not to scale. The developer reserves the right to make revisions. 5. Calculation of suite area is measured as the area bounded by the centre line of the demising or partition walls separating one unit from another unit, the exterior face of all exterior walls, and the exterior face of the corridor wall enclosing the adjoining unit. 6. Calculation of balcony area is measured as the area bounded by the centre line of the demising or partition walls separating one unit from another unit, the outmost face of the enclosing guard and the external face of the unit adjoining the balcony. 7. The units are measured at typical floor in the building. Columns may vary in size depending on the floor level.



CITRINE RESIDENCES

BUILDING	CITRINE - 3 BR
3 BEDROOM	TYPE E
UNIT NO.	802
SUITE AREA.	167 m² (1.797 sq.ft)
BALCONY AREA.	16 m² (172 sq.ft)
TOTAL AREA	183 m² (1.969 sq.ft)



Level 08



جزيرة مريم
MARYAM ISLAND
SHARJAH

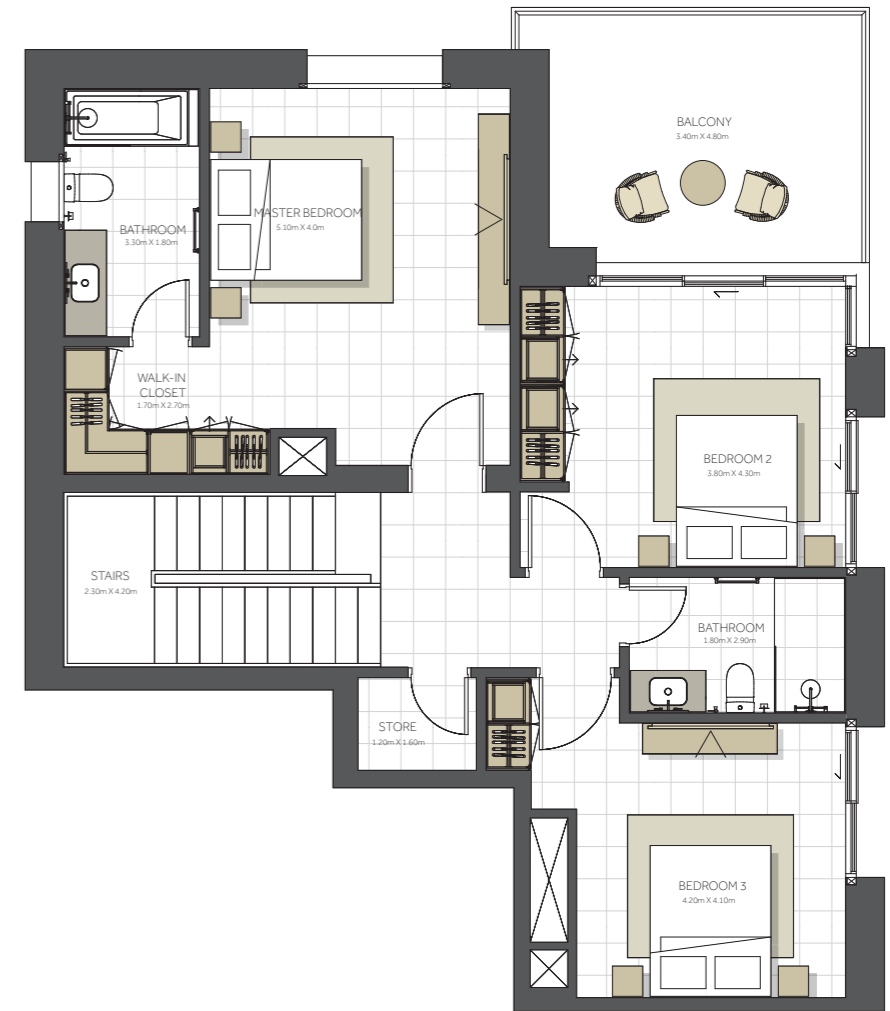
Disclaimer:

1. All room dimensions are measured to structural elements and exclude all finishes and construction tolerances. 2. All dimensions have been provided by our consultant architects. 3. All materials, dimensions and drawings are approximate. Information is subject to change without notice. 4. Actual suite area may vary from the stated area. Drawings not to scale. The developer reserves the right to make revisions. 5. Calculation of suite area is measured as the area bounded by the centre line of the demising or partition walls separating one unit from another unit, the exterior face of all exterior walls, and the exterior face of the corridor wall enclosing the adjoining unit. 6. Calculation of balcony area is measured as the area bounded by the centre line of the demising or partition walls separating one unit from another unit, the outmost face of the enclosing guard and the external face of the unit adjoining the balcony. 7. The units are measured at typical floor in the building. Columns may vary in size depending on the floor level.



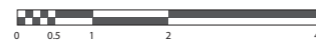
CITRINE RESIDENCES

BUILDING	CITRINE - 4 BR
4 BEDROOM	TYPE A Duplex
UNIT NO.	903
SUITE AREA.	217 m² (2.336 sq.ft)
BALCONY AREA.	69 m² (742 sq.ft)
TOTAL AREA	286 m² (3.078 sq.ft)



Level 09

Level 10



جزيرة مريم
MARYAM ISLAND
SHARJAH

Disclaimer:

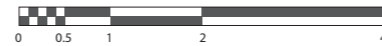
1. All room dimensions are measured to structural elements and exclude all finishes and construction tolerances. 2. All dimensions have been provided by our consultant architects. 3. All materials, dimensions and drawings are approximate. Information is subject to change without notice. 4. Actual suite area may vary from the stated area. Drawings not to scale. The developer reserves the right to make revisions. 5. Calculation of suite area is measured as the area bounded by the centre line of the demising or partition walls separating one unit from another unit, the exterior face of all exterior walls, and the exterior face of the corridor wall enclosing the adjoining unit. 6. Calculation of balcony area is measured as the area bounded by the centre line of the demising or partition walls separating one unit from another unit, the outmost face of the enclosing guard and the external face of the unit adjoining the balcony. 7. The units are measured at typical floor in the building. Columns may vary in size depending on the floor level.



CITRINE RESIDENCES

BUILDING	CITRINE - 4 BR
4 BEDROOM	TYPE A
UNIT NO.	803
SUITE AREA.	196m² (2.110 sq.ft)
BALCONY AREA.	46 m² (495 sq.ft)
TOTAL AREA	242 m² (2.605 sq.ft)

Level 08



جزيرة مريم
MARYAM ISLAND
SHARJAH

Disclaimer:

1. All room dimensions are measured to structural elements and exclude all finishes and construction tolerances. 2. All dimensions have been provided by our consultant architects. 3. All materials, dimensions and drawings are approximate. Information is subject to change without notice. 4. Actual suite area may vary from the stated area. Drawings not to scale. The developer reserves the right to make revisions. 5. Calculation of suite area is measured as the area bounded by the centre line of the demising or partition walls separating one unit from another unit, the exterior face of all exterior walls, and the exterior face of the corridor wall enclosing the adjoining unit. 6. Calculation of balcony area is measured as the area bounded by the centre line of the demising or partition walls separating one unit from another unit, the outmost face of the enclosing guard and the external face of the unit adjoining the balcony. 7. The units are measured at typical floor in the building. Columns may vary in size depending on the floor level.



CITRINE RESIDENCES

BUILDING	CITRINE - 4 BR
4 BEDROOM	TYPE B
UNIT NO.	909,1007
SUITE AREA.	194m² (2.088 sq.ft)
BALCONY AREA.	35m² (376 sq.ft)
TOTAL AREA	229m² (2.465 sq.ft)



Level 09

Level 10



Disclaimer:

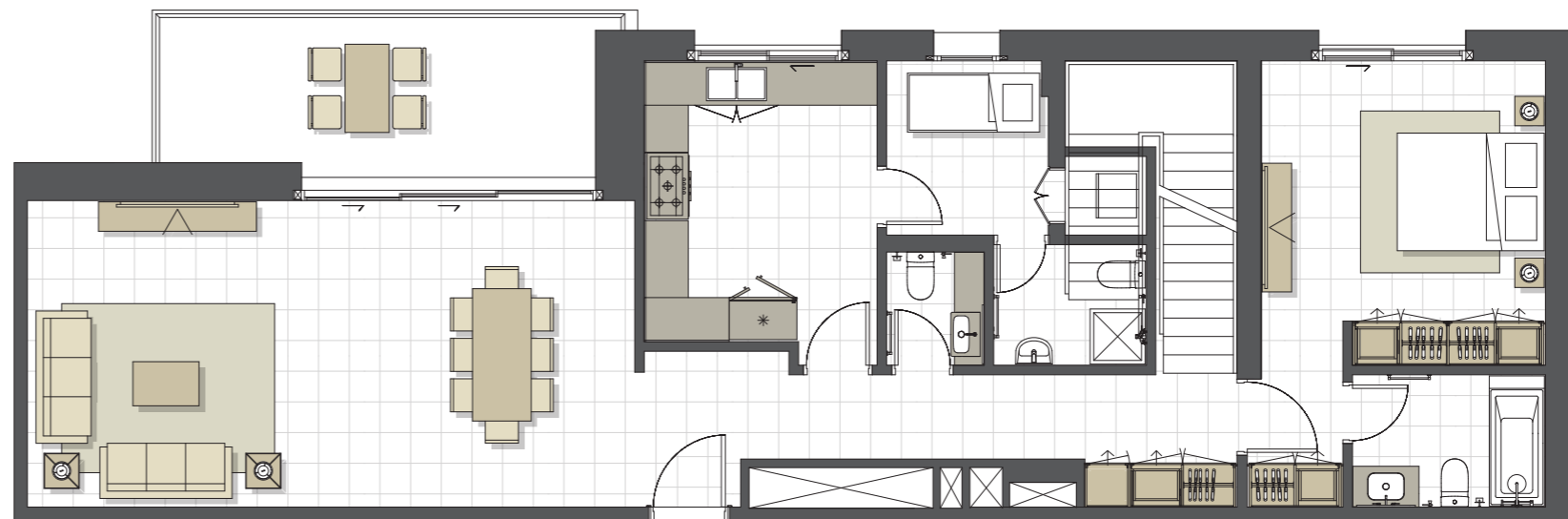
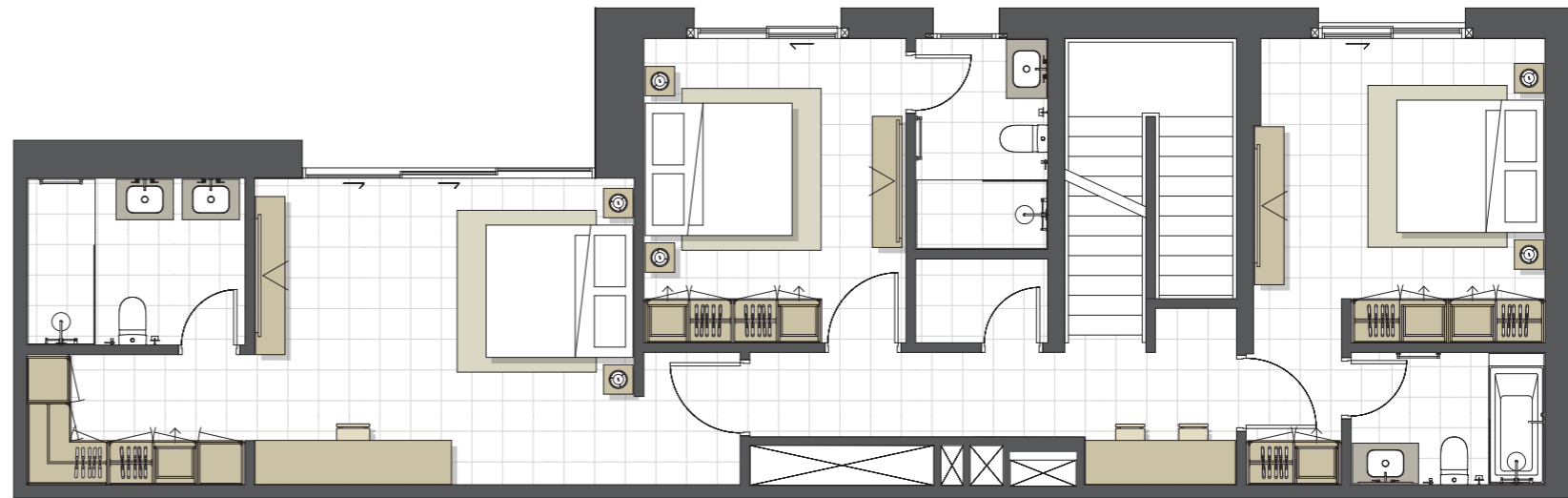
1. All room dimensions are measured to structural elements and exclude all finishes and construction tolerances. 2. All dimensions have been provided by our consultant architects. 3. All materials, dimensions and drawings are approximate. Information is subject to change without notice. 4. Actual suite area may vary from the stated area. Drawings not to scale. The developer reserves the right to make revisions. 5. Calculation of suite area is measured as the area bounded by the centre line of the demising or partition walls separating one unit from another unit, the exterior face of all exterior walls, and the exterior face of the corridor wall enclosing the adjoining unit. 6. Calculation of balcony area is measured as the area bounded by the centre line of the demising or partition walls separating one unit from another unit, the outmost face of the enclosing guard and the external face of the unit adjoining the balcony. 7. The units are measured at typical floor in the building. Columns may vary in size depending on the floor level.



سيترين

CITRINE RESIDENCES

BUILDING	CITRINE - 4 BR
4 BEDROOM	TYPE D Duplex
UNIT NO.	902
SUITE AREA.	241 m ² (2.594 sq.ft)
BALCONY AREA.	14 m ² (150 sq.ft)
TOTAL AREA	255 m ² (2.745 sq.ft)



Level 09

Level 10



جزيرة مريم
MARYAM ISLAND
SHARJAH

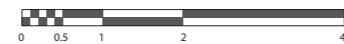
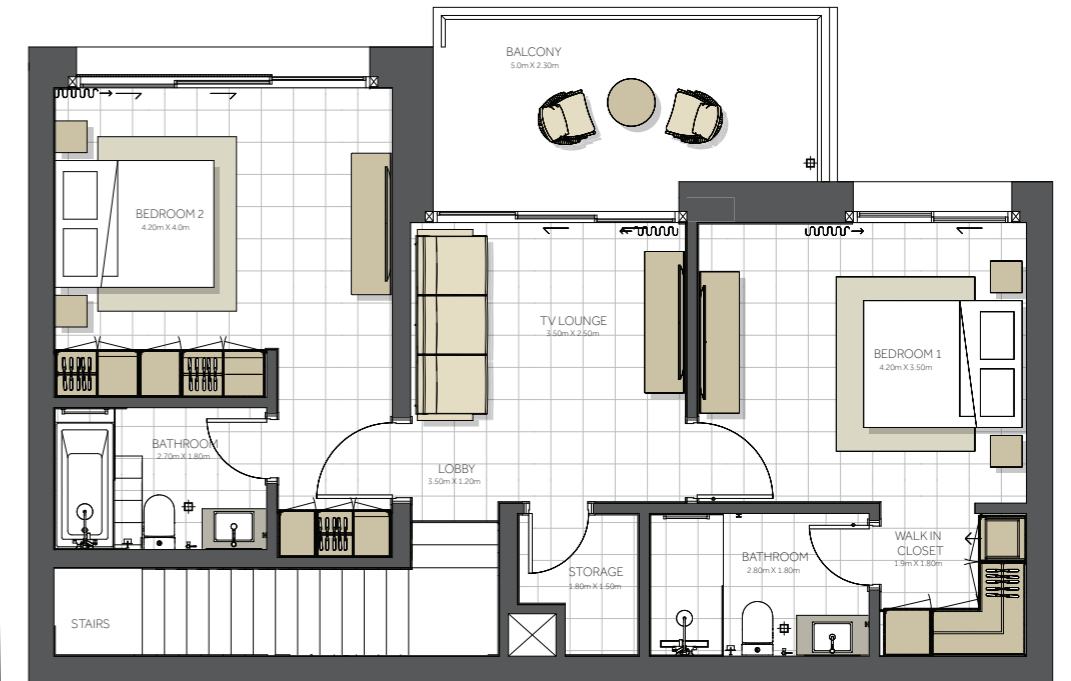
Disclaimer:

1. All room dimensions are measured to structural elements and exclude all finishes and construction tolerances. 2. All dimensions have been provided by our consultant architects. 3. All materials, dimensions and drawings are approximate. Information is subject to change without notice. 4. Actual suite area may vary from the stated area. Drawings not to scale. The developer reserves the right to make revisions. 5. Calculation of suite area is measured as the area bounded by the centre line of the demising or partition walls separating one unit from another unit, the exterior face of all exterior walls, and the exterior face of the corridor wall enclosing the adjoining unit. 6. Calculation of balcony area is measured as the area bounded by the centre line of the demising or partition walls separating one unit from another unit, the outmost face of the enclosing guard and the external face of the unit adjoining the balcony. 7. The units are measured at typical floor in the building. Columns may vary in size depending on the floor level.



CITRINE RESIDENCES

BUILDING	PODIUM
3 BEDROOM	TOWNHOUSE
UNIT NO.	002,003,004
SUITE AREA.	190m² (2.045 sq.ft)
BALCONY AREA.	37 m² (398 sq.ft)
TOTAL AREA	227 m² (2.443 sq.ft)



PODIUM 2

PODIUM 1



جزيرة مريم
MARYAM ISLAND
SHARJAH

Disclaimer:

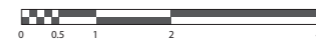
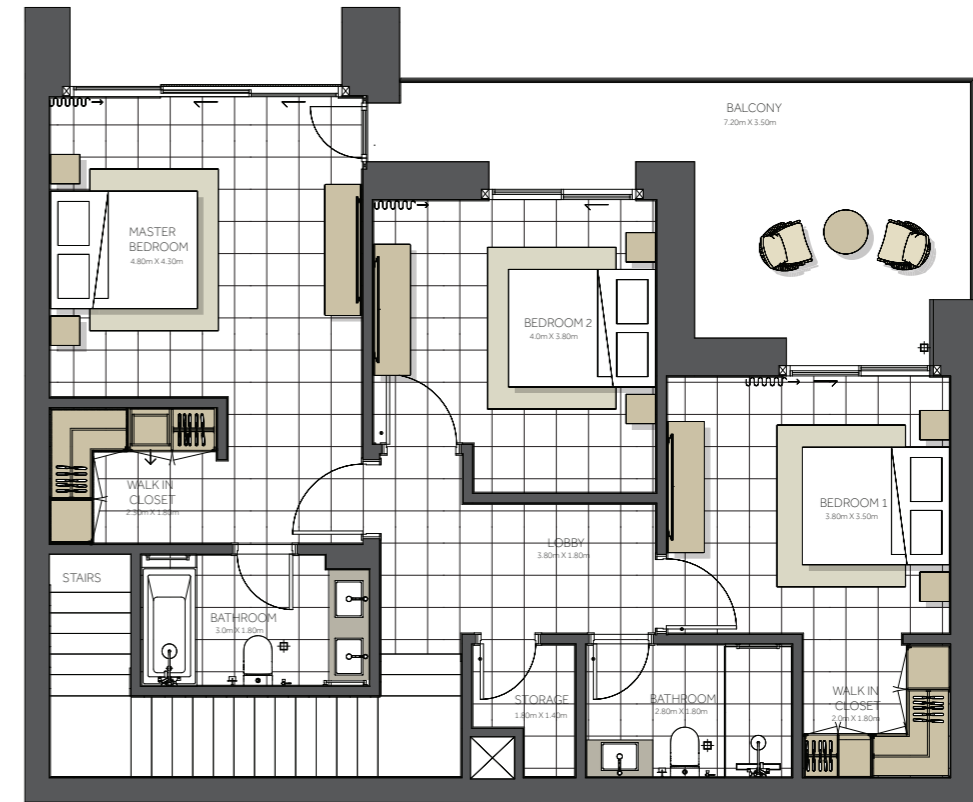
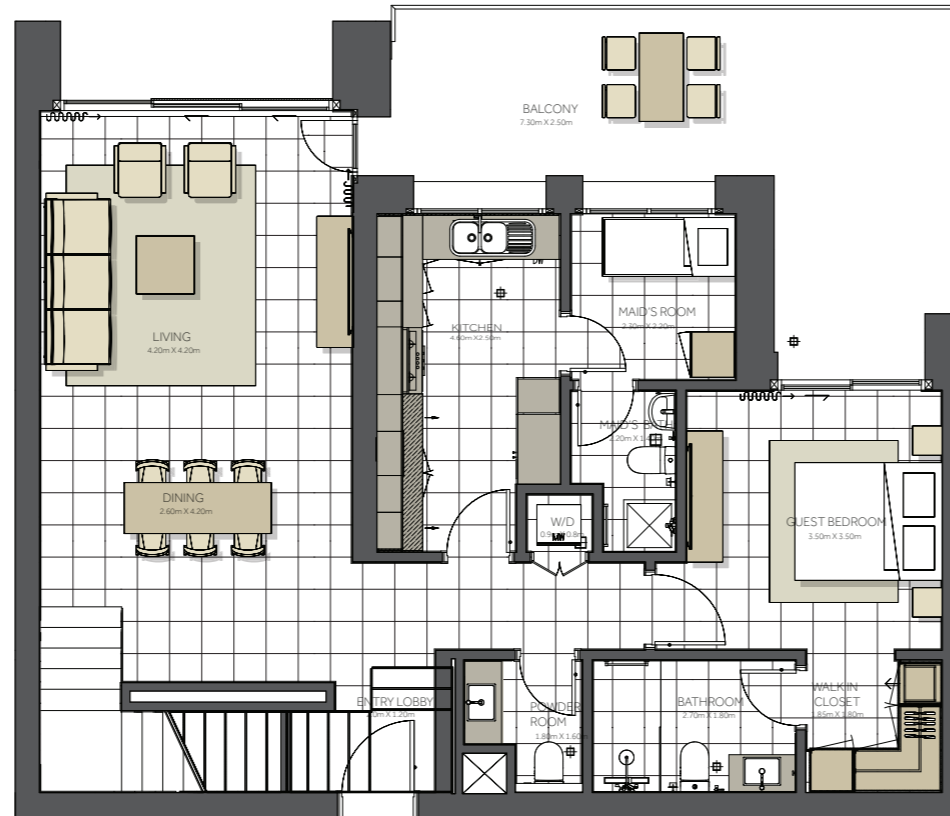
1. All room dimensions are measured to structural elements and exclude all finishes and construction tolerances. 2. All dimensions have been provided by our consultant architects. 3. All materials, dimensions and drawings are approximate. Information is subject to change without notice. 4. Actual suite area may vary from the stated area. Drawings not to scale. The developer reserves the right to make revisions. 5. Calculation of suite area is measured as the area bounded by the centre line of the demising or partition walls separating one unit from another unit, the exterior face of all exterior walls, and the exterior face of the corridor wall enclosing the adjoining unit. 6. Calculation of balcony area is measured as the area bounded by the centre line of the demising or partition walls separating one unit from another unit, the outmost face of the enclosing guard and the external face of the unit adjoining the balcony. 7. The units are measured at typical floor in the building. Columns may vary in size depending on the floor level.





CITRINE RESIDENCES

BUILDING	PODIUM
4 BEDROOM	TOWNHOUSE
UNIT NO.	001,005
SUITE AREA.	214m² (2.303 sq.ft)
BALCONY AREA.	45 m² (484 sq.ft)
TOTAL AREA	259 m² (2.789 sq.ft)



PODIUM 2

PODIUM 1



جزيرة مريم
MARYAM ISLAND
SHARJAH

Disclaimer:

1. All room dimensions are measured to structural elements and exclude all finishes and construction tolerances. 2. All dimensions have been provided by our consultant architects. 3. All materials, dimensions and drawings are approximate. Information is subject to change without notice. 4. Actual suite area may vary from the stated area. Drawings not to scale. The developer reserves the right to make revisions. 5. Calculation of suite area is measured as the area bounded by the centre line of the demising or partition walls separating one unit from another unit, the exterior face of all exterior walls, and the exterior face of the corridor wall enclosing the adjoining unit. 6. Calculation of balcony area is measured as the area bounded by the centre line of the demising or partition walls separating one unit from another unit, the outmost face of the enclosing guard and the external face of the unit adjoining the balcony. 7. The units are measured at typical floor in the building. Columns may vary in size depending on the floor level.