



ONE  
PARK  
SQUARE  
BY IMAN



Inspired By Desert Sand,  
Perfected By Nature



# Building Legacies since 2016

- |    |      |                     |    |      |                   |    |      |  |
|----|------|---------------------|----|------|-------------------|----|------|--|
| 01 | 2016 | OXFORD VILLAS       | 06 | 2022 | OXFORD TERRACES   | 11 | 2023 | GARDENS 2                                    |
| 02 | 2017 | OXFORD RESIDENCES   | 07 | 2022 | OXFORD TERRACES 2 | 12 | 2024 | ONE PARK CENTRAL                             |
| 03 | 2019 | OXFORD RESIDENCES 2 | 08 | 2022 | THE GROVE         | 13 | 2024 | ONE SKY PARK<br>FEATURED BY VERSACE CERAMICS |
| 04 | 2021 | OXFORD BOULEVARD    | 09 | 2023 | OXFORD GARDENS    |    |      |  |
| 05 | 2022 | OXFORD 212          | 10 | 2023 | 10 OXFORD         |    |      |  |

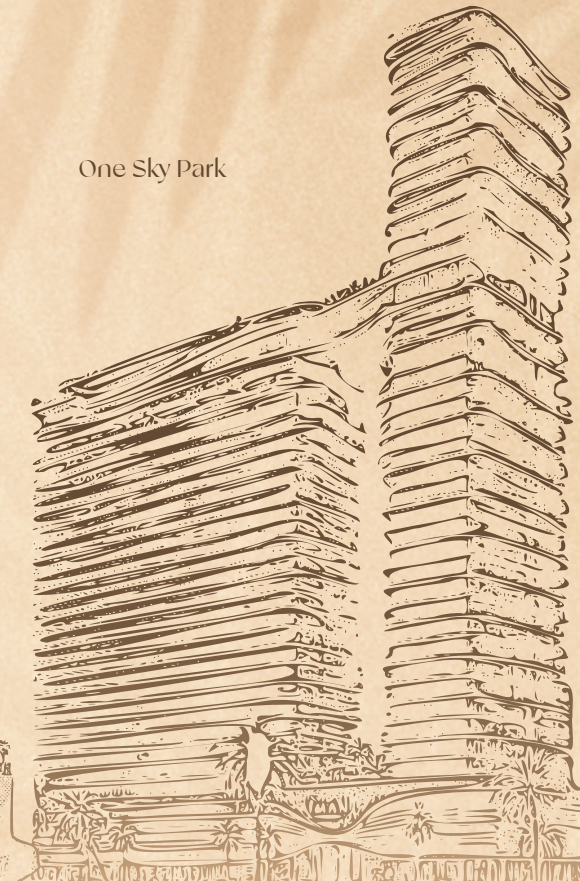
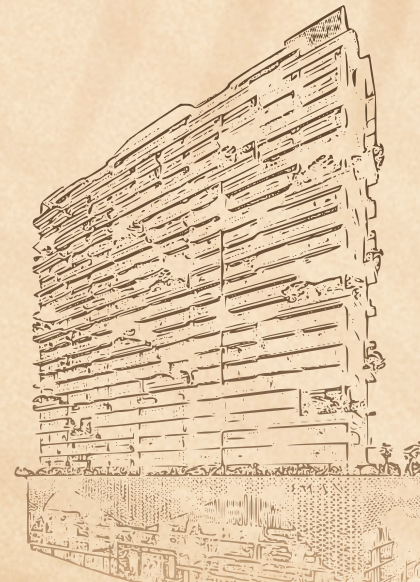
One Sky Park

One Park Central

The Grove

10 Oxford

Oxford 212





# Dubai, The Heartbeat of Modern Living

A marvel of modern ambition and timeless allure, Dubai shines as a sanctuary for those seeking a refined lifestyle paired with peace of mind. With world-class infrastructure, unrivaled urban planning, and a focus on safety, this city promises an experience where comfort and security blend seamlessly. Strategically positioned at the confluence of Europe, Asia, and Africa, Dubai is a magnet for global culture, offering an enriching, cosmopolitan lifestyle amidst breathtaking architecture and vibrant communities. In Dubai, you'll find not just a home, but a dynamic, ever-evolving lifestyle designed to inspire and elevate.



## JVC: The Urban Epicenter

Jumeirah Village Circle (JVC) offers a harmonious blend of community living and modern convenience, making it one of Dubai's most sought-after neighborhoods. Surrounded by parks, reputable schools, and top-tier medical facilities, JVC provides everything needed for a balanced lifestyle. Its close proximity to key motorways ensures seamless connectivity across the city.

An up-and-coming destination, JVC combines contemporary infrastructure with a welcoming, family-oriented atmosphere. For prospective homebuyers, this thriving community represents an ideal choice, promising both a sense of belonging and a sound investment in Dubai's dynamic real estate landscape.

**17min**

Bluewaters  
Island

**18min**

Expo  
City

**20min**

Palm  
Jumeirah

**20min**

Mall of the  
Emirates

**25min**

Dubai  
Mall

**30min**

Al Maktoum  
Intl Airport

**30min**

Dubai Intl  
Airport  
(DXB)

**36min**

Palm  
Jebel Ali





ONE  
PARK  
SQUARE  
BY IMAN

Inspired By Desert Sand, Perfected By Nature







## Design Strategy

One Park Square draws its essence from the serene flow of nature, capturing the gentle movement of water and the timeless beauty of the desert. The architecture flows gracefully, with sleek lines and refined finishes that echo the elegance of natural landscapes. Infused with organic elements, the amenities within One Park Square create an immersive experience, where every corner invites residents to feel connected to both luxury and nature's tranquil rhythms.

## 24th Floor

Penthouse

## 16th Floor

Duplex Apartment

## 12th Floor

Duplex Apartment

## 11th Floor

Indoor Amenities Floor

## 8th Floor

Duplex Apartment

## 1st Floor

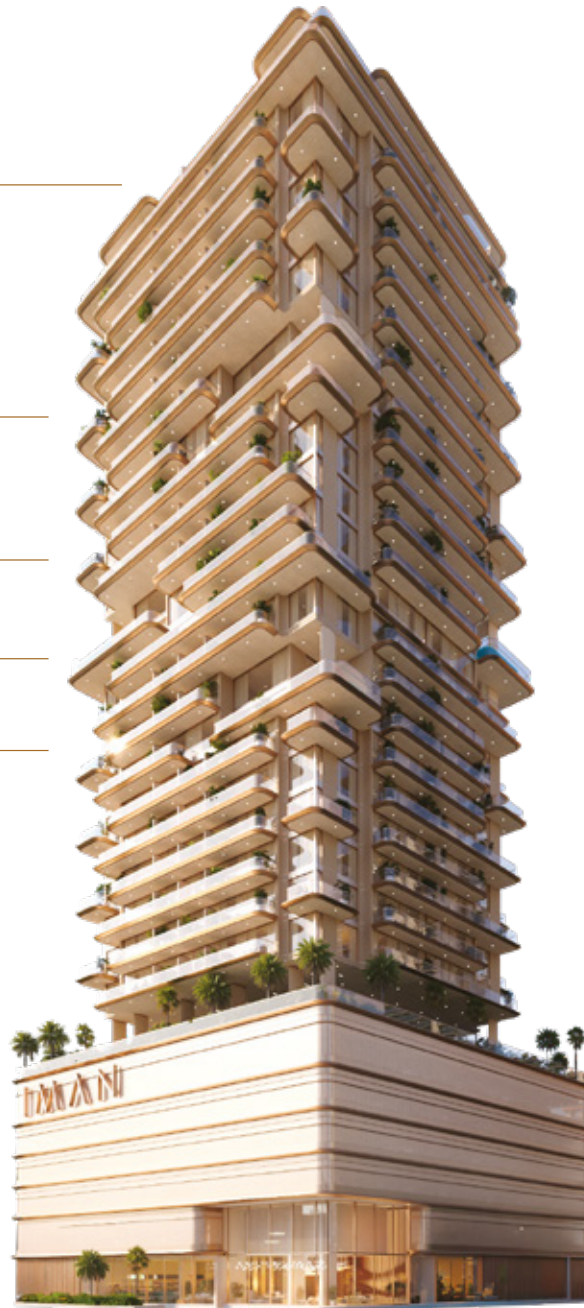
Amenities Floor

## 5 Podium Floors

Parking

## Ground Floor

Expansive Entrance Lobby, Retail Shops, Lift Lobby



# Building Configuration

Exclusive amenities are combined in two zones and celebrated in a protruding structural expression. The building facade for duplexes has been designed to include a pool, while the 24th floor features exquisitely designed penthouses.

## Featured Amenities







THE EXPANSIVE LOBBY



THE EXPANSIVE LOBBY



THE LIVING ROOM



THE KITCHEN



THE BEDROOM





THE BATHROOM



DUPLEX APARTMENT

# Nature's Touch In Every Amenity

One Park Square's amenities cater to every desire,  
creating a setting where lifestyle flows into quiet elegance, offering only the finest in comfort and experience.



AMENITIES FLOOR



40M LEISURE POOL



FITNESS CENTER



JUNGLE GYM



INDOOR KIDS PLAY AREA





OUTDOOR KIDS PLAY AREA



CLUBHOUSE



YOGA ZONE



KIDS POOL & SPLASH PAD



BARBEQUE AREA



SAUNA AND STEAM ROOM



ZEN GARDEN



PET ZONE



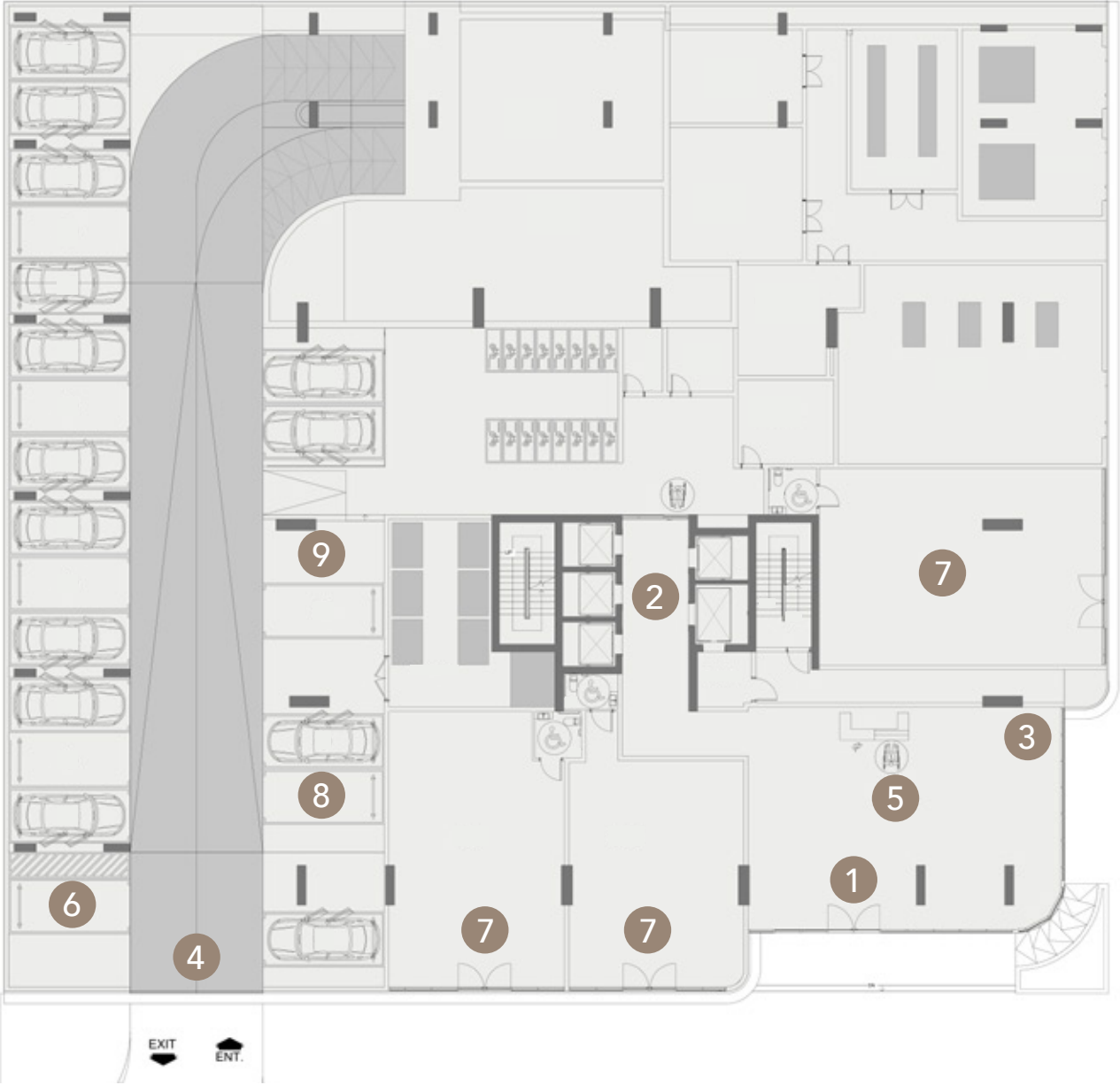


JOGGING TRACK



SKATE PARK

# Ground Floor



- 1 Expansive Lobby
- 2 Lift Lobby
- 3 Lobby Lounge
- 4 Parking Entrance & Exit
- 5 Lobby Reception
- 6 People Of Determination Parking
- 7 Retail Units
- 8 Retail Parking
- 9 EV Charging Station



# First Floor

- 1 Jungle Gym
- 2 Skate Park
- 3 Yoga Zone
- 4 Kids Splash Pad
- 5 Barbeque Area
- 6 Leisure Lounge
- 7 40M Leisure Pool
- 8 Sun Loungers
- 9 Pool Bar
- 10 Zen Garden
- 11 Kids Playground
- 12 Kids Pool
- 13 Sunken Seating
- 14 Outdoor Shower
- 15 Pet Zone
- 16 Jogging Track
- 17 Baja Shelf



# 11th Floor

- 1 Clubhouse
- 2 Pool Table
- 3 Arcade Zone
- 4 Table Tennis
- 5 Club Lounge
- 6 Coffee Bar & Kitchen
- 7 Sauna & Steam Room
- 8 Male Changing Room
- 9 Female Changing Room
- 10 Ice Therapy Room
- 11 Fitness Center
- 12 Cardio Zone
- 13 Strength Zone
- 14 Indoor Kids Play Area
- 15 Kid's Rock Climbing Wall
- 16 Kid's Ball Pool Slide



ONE SOURCE PAPER BY IMAN DEVELOPERS



ONE  
PARK  
SQUARE  
BY IMAN