



KYOTO

BY ORO 24

CURATED  
COMMUNITY  
LIVING





# AMENITIES



DRIVE-IN ENTRANCE /  
DROP OFF



GRAND ENTRANCE  
LOBBY



WATER FEATURE



MOVE IN/  
MOVE OUT BAY



DELIVERY WORKERS  
RESTING ZONE



JOGGING  
TRACK



TERRACE BROOK



PADEL ON THE  
WATER



BARBECUE  
DECK



LANDSCAPE



OUTDOOR KIDS  
PLAY AREA



INDOOR KIDS  
PLAY AREA



VIRTUAL  
GOLF



GAMING  
ARCADE



BOWLING  
ALLEY



BILLIARDS



40 METER  
INFINITY POOL



LANDSCAPE POOL  
DECK



CABANA  
SEATING



OUTDOOR  
CINEMA



KIDS  
POOL



RAIN SHOWER  
LOUNGE



MEDITATION  
ZONE



SQUASH  
COURT



RAINFOREST  
DINING



HEALTH  
CLUB



YOGA  
DECK



ROOF TOP  
LOUNGE



OBSERVATORY  
LOUNGE



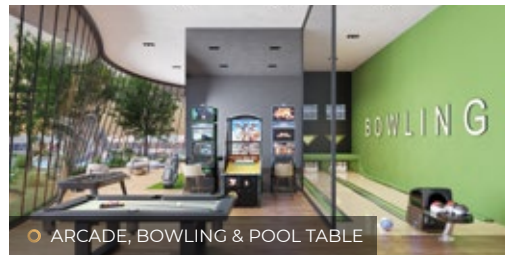
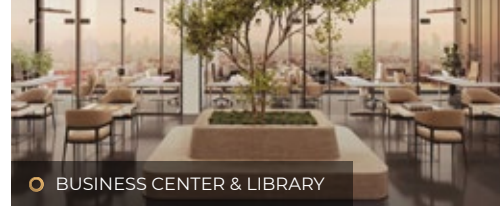
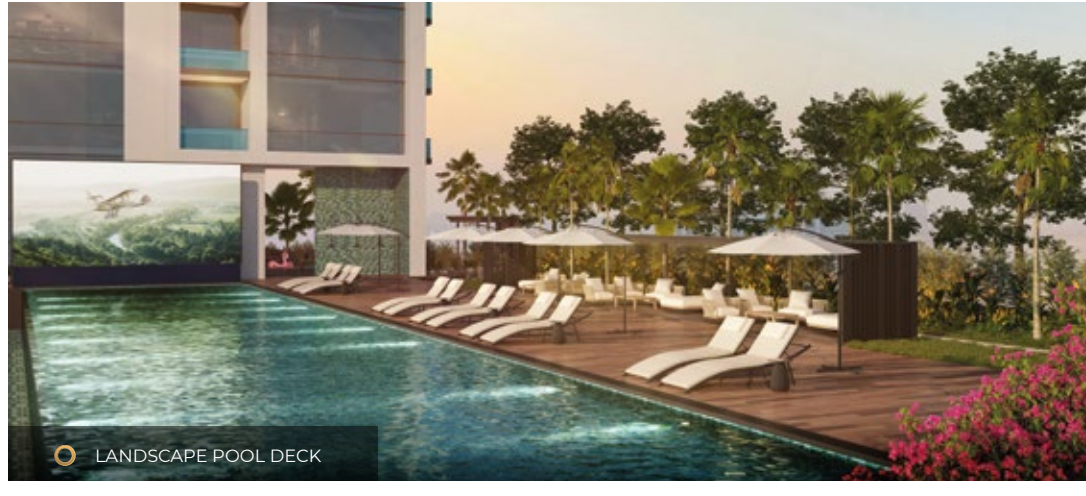
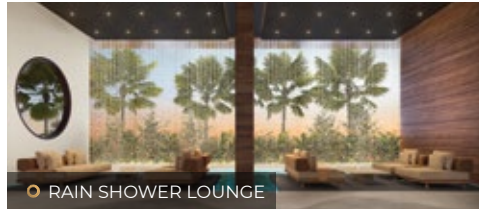
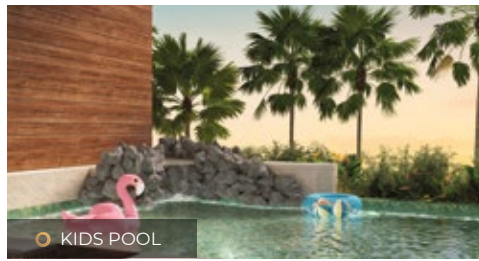
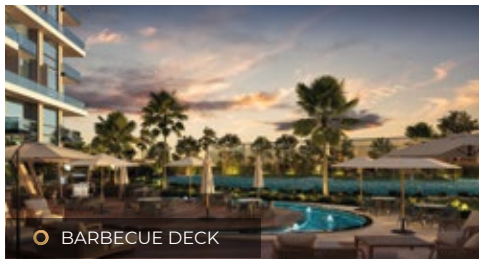
PARTY  
HALL



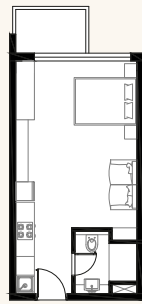
BUSINESS  
CENTER



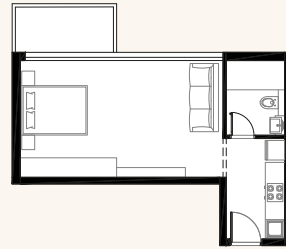
LIBRARY



○ STUDIO

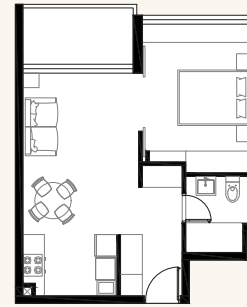


○ TYPE 1



○ TYPE 2

○ 1 BEDROOM

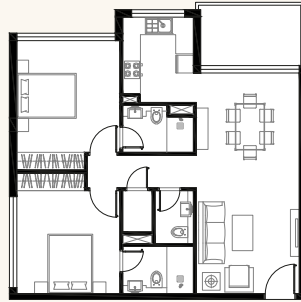


○ TYPE 1



○ TYPE 2

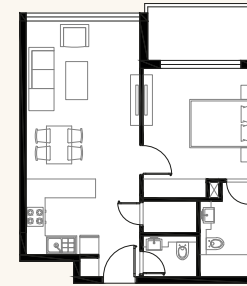
○ 2 BEDROOM



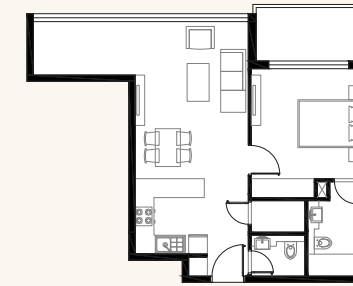
○ TYPE 1



○ TYPE 2

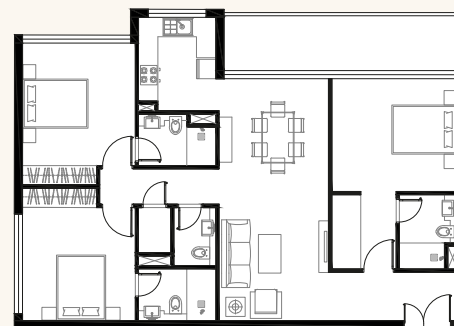


○ TYPE 3



○ TYPE 4

○ 3 BEDROOM



○ TYPE 1

# ARJAN

CENTRALLY LOCATED



## MAILLS

- MY CITY CENTRE - 5 MINS
- CIRCLE MALL - 10 MINS
- CITY CENTRE ME'AISEM - 10 MINS
- MALL OF THE EMIRATES - 15 MINS
- DUBAI HILLS MALL - 15 MINS
- MARINA MALL - 15 MINS
- AL BARSHA MALL - 15 MINS
- IBN BATTUTA MALL - 20 MINS
- NAKHEEL MALL - 20 MINS



## MEDICAL FACILITIES

- NEURO SPINAL HOSPITAL - 5 MINS
- MEDICLINIC PARKVIEW HOSPITAL - 5 MINS
- ASTER CLINIC - 15 MINS
- SAUDI GERMAN HOSPITAL - 15 MINS
- AL ZAHRA HOSPITAL - 15 MINS
- MEDICLINIC MEADOWS - 20 MINS



## SCHOOLS

- BLOOM WORLD ACADEMY - 5 MINS
- GEMS FOUNDERS SCHOOL - 5 MINS
- JSS INTERNATIONAL SCHOOL - 10 MINS
- SUNMARKE SCHOOL - 10 MINS
- ARCADIA SCHOOL - 10 MINS
- REPTON SCHOOL - 10 MINS
- NORD ANGLIA INTERNATIONAL SCHOOL - 10 MINS



## AIRPORTS

- DUBAI INTERNATIONAL AIRPORT (DXB) - 30 MINS
- AL MAKTOUM INTERNATIONAL AIRPORT (DWC) - 30 MINS



## BEACHES

- SUFOUH BEACH - 20 MINS
- MARINA BEACH - 20 MINS
- THE WALK - 25 MINS
- JBR - 25 MINS
- SUNSET BEACH - 25 MINS



## COMMUNITY PARKS

- SABAT PARK - 10 MINS
- DOKHON PARK - 10 MINS
- SABAR PARK - 10 MINS
- BARSHA POND PARK - 15 MINS



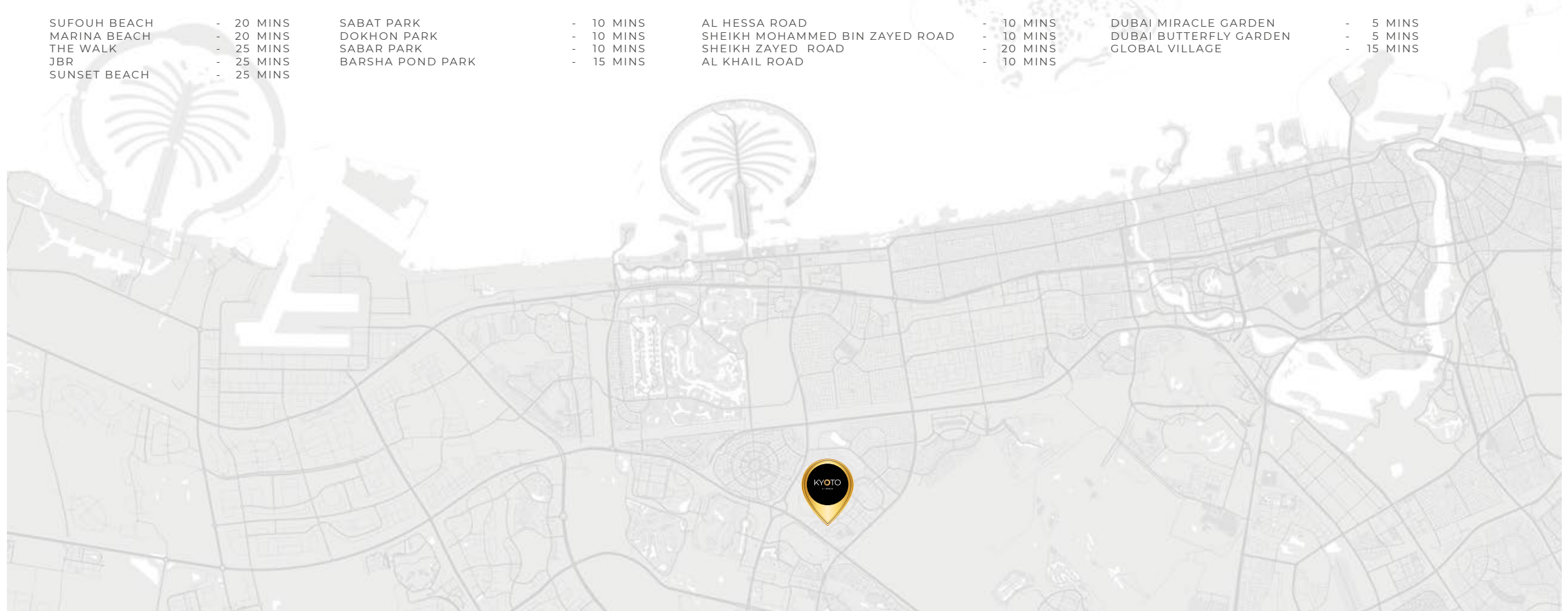
## MOTORWAYS

- AL HESSA ROAD - 10 MINS
- SHEIKH MOHAMMED BIN ZAYED ROAD - 10 MINS
- SHEIKH ZAYED ROAD - 20 MINS
- AL KHAIL ROAD - 10 MINS



## ATTRACTIONS

- DUBAI MIRACLE GARDEN - 5 MINS
- DUBAI BUTTERFLY GARDEN - 5 MINS
- GLOBAL VILLAGE - 15 MINS





CURATED  
COMMUNITY  
LIVING

[ORO24.COM](https://oro24.com)