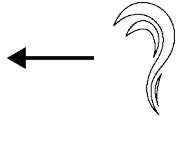


AJMAN CREEK TOWERS

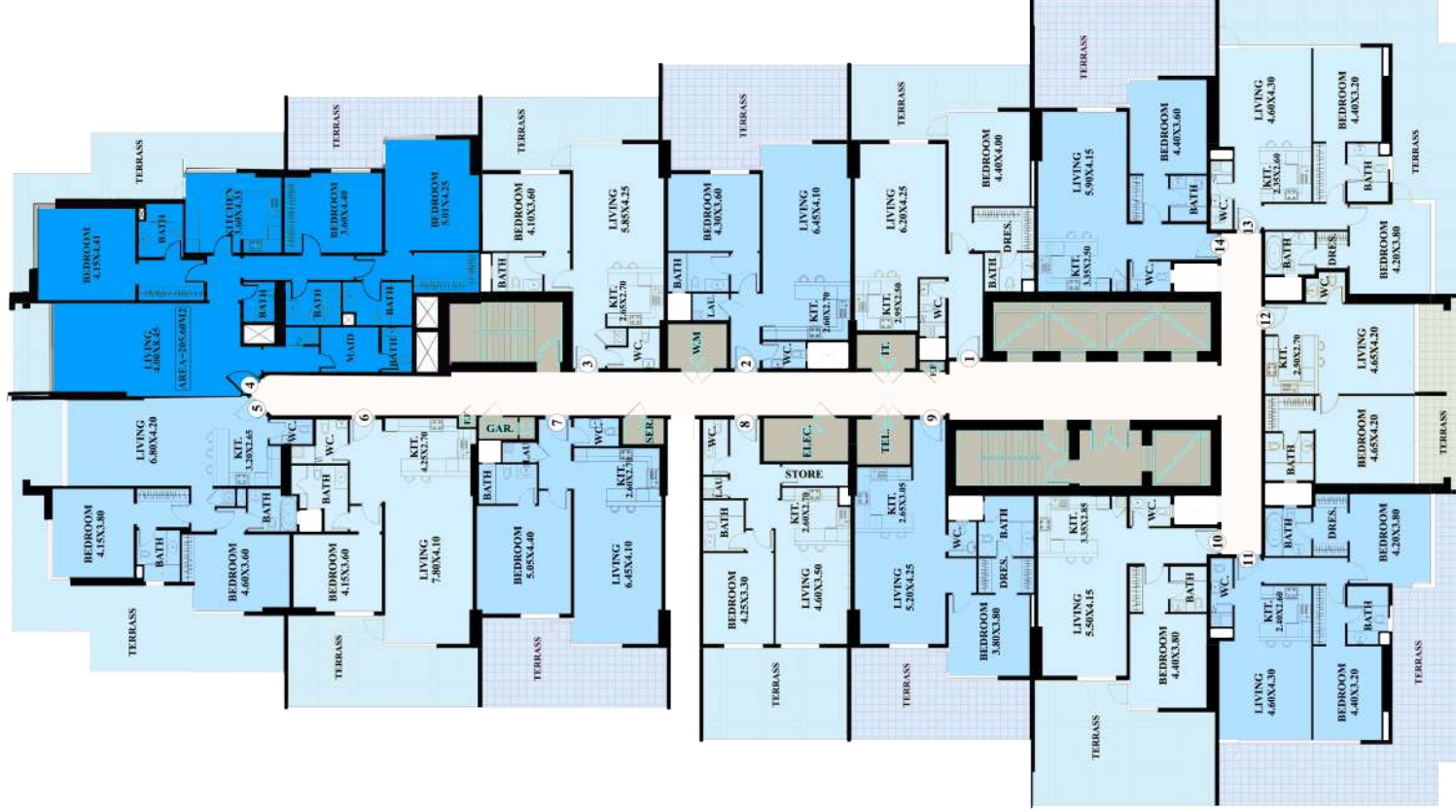
TOWERS

2,3,4

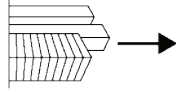
MASTER PLAN



CREEK VIEW



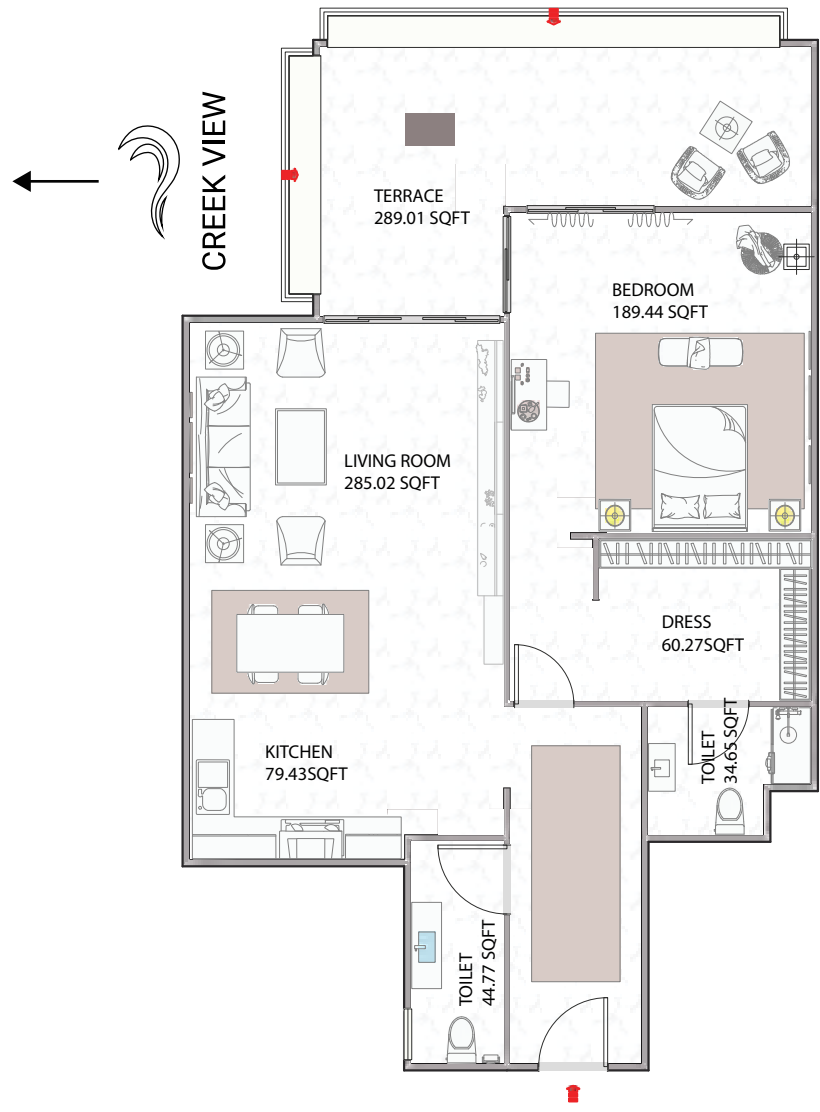
CITY VIEW



AJMAN CREEK TOWERS



APARTMENT
1 BEDROOM
UNIT - 01
TOTAL AREA: 1496.97 SQ.FT



Disclaimer:

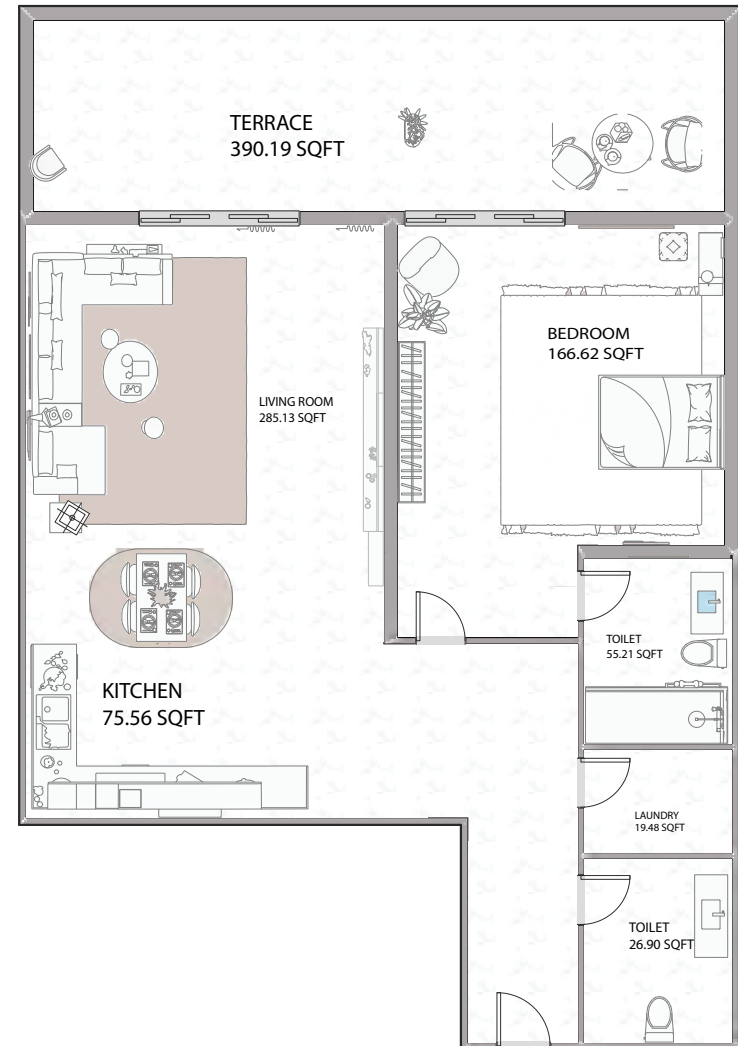
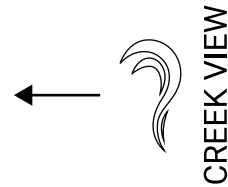
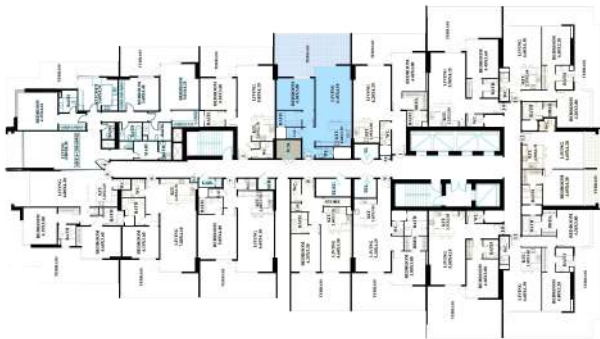
- 1. All materials, finishes, dimensions and drawings are approximate.
- 2. Information is subject to change without notice.
- 3. Actual suite area may vary from the stated area.
- 4. Drawings are not to scale.
- 5. The Developer reserves the right to make revisions/alterations without any liability whatsoever.

AJMAN CREEK TOWERS

APARTMENT 1 BEDROOM

UNIT - 02

TOTAL AREA: 1641.89 SQ.FT



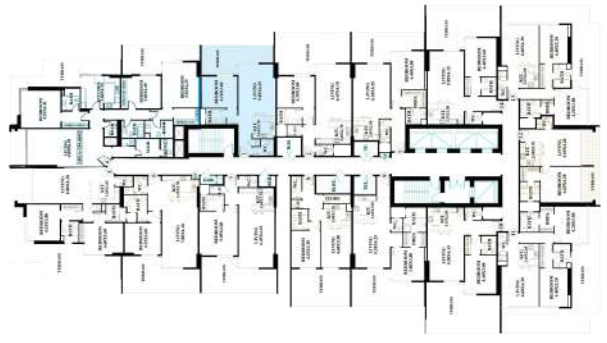
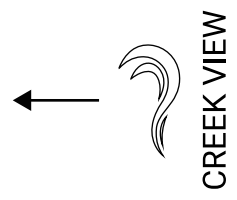
Disclaimer:

1. All materials, finishes, dimensions and drawings are approximate.
2. Information is subject to change without notice.
3. Actual suite area may vary from the stated area.
4. Drawings are not to scale.
5. The Developer reserves the right to make revisions/alterations without any liability whatsoever.

AJMAN CREEK TOWERS



APARTMENT
1 BEDROOM
UNIT - 03
TOTAL AREA: 1329.57 SQ.FT



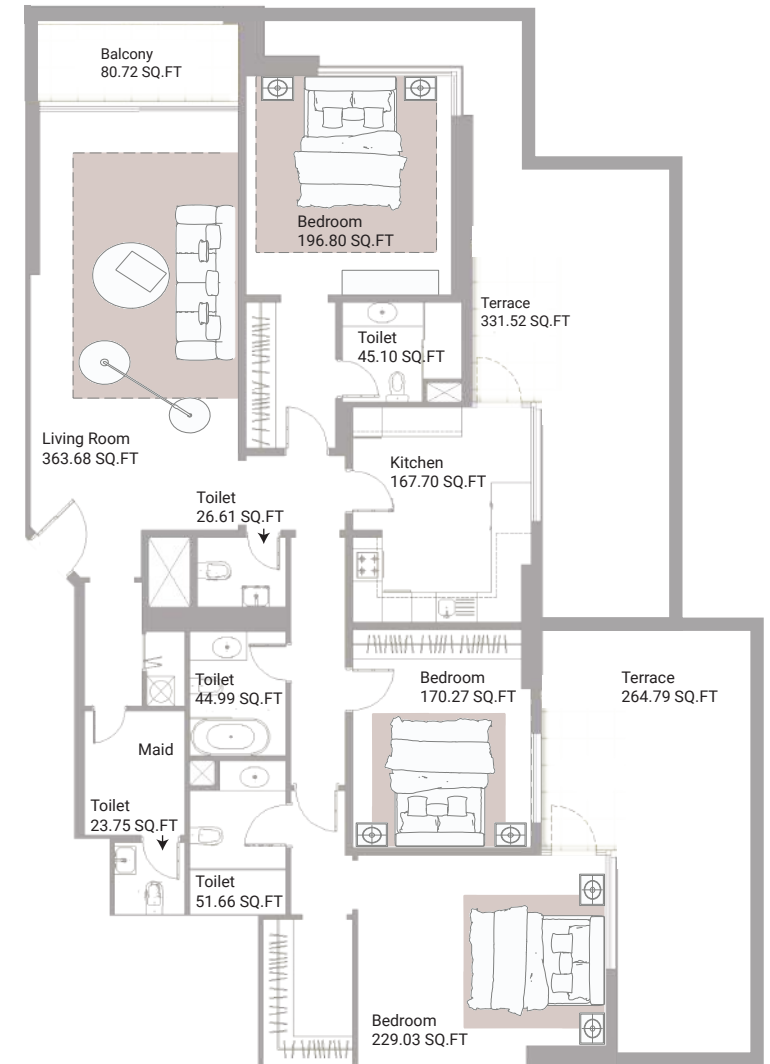
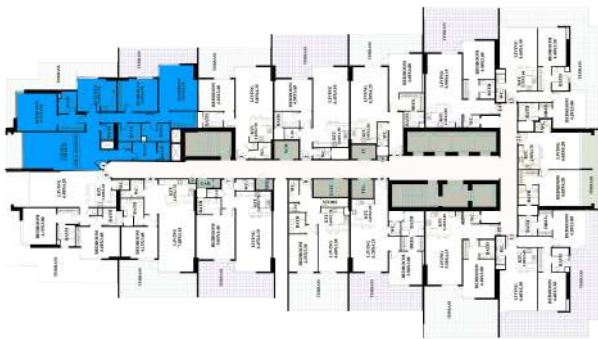
Disclaimer:
1. All materials, finishes, dimensions and drawings are approximate.
2. Information is subject to change without notice.
3. Actual suite area may vary from the stated area.
4. Drawings are not to scale.
5. The Developer reserves the right to make revisions/alterations without any liability whatsoever.

AJMAN CREEK TOWERS

APARTMENT 3 BEDROOMS

UNIT - 04

TOTAL AREA: 3433.62 SQ.FT



Disclaimer:

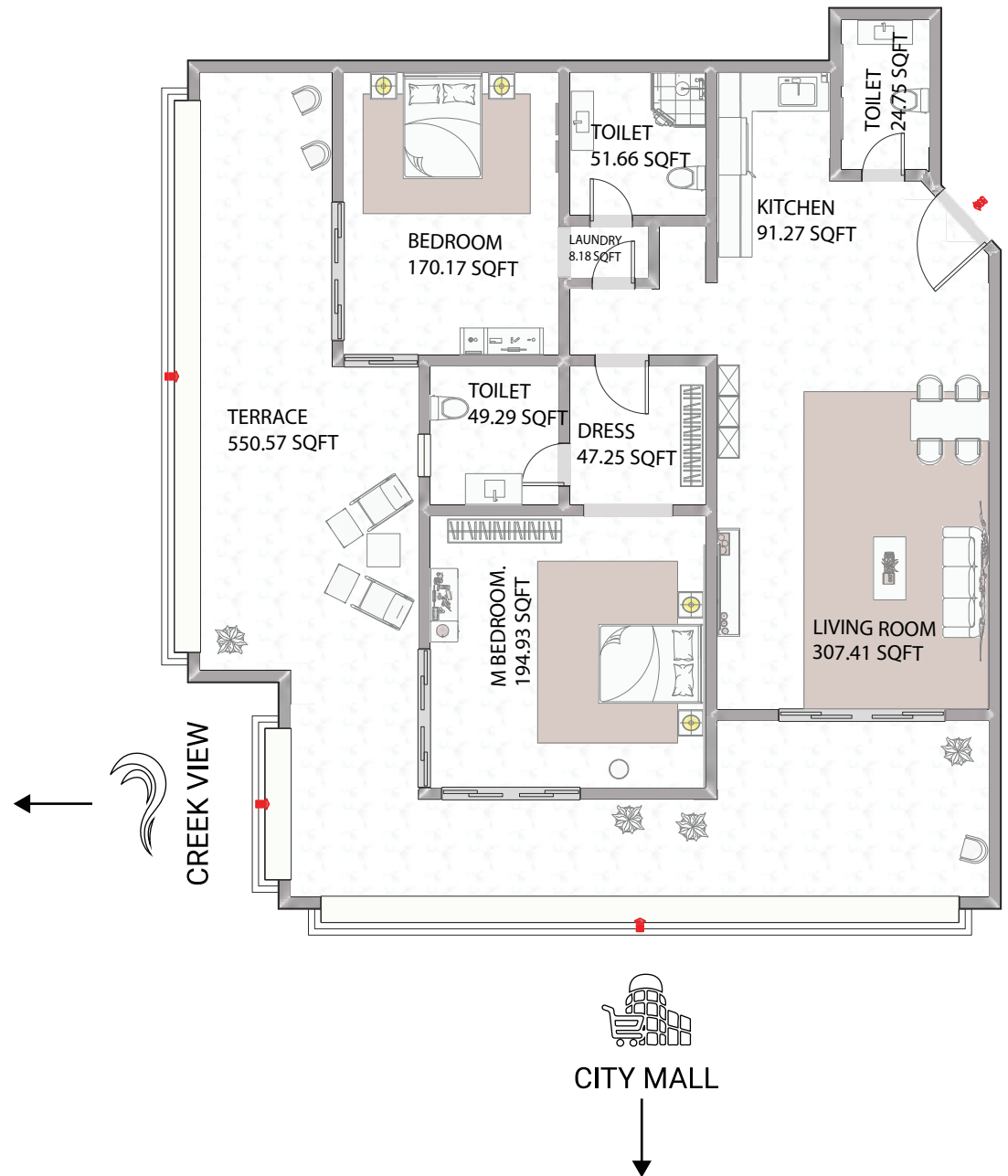
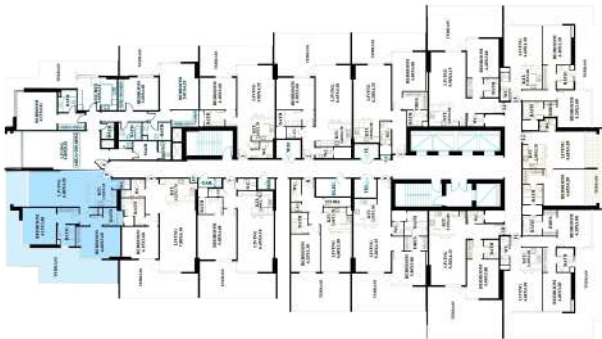
1. All materials, finishes, dimensions and drawings are approximate.
2. Information is subject to change without notice.
3. Actual suite area may vary from the stated area.
4. Drawings are not to scale.
5. The Developer reserves the right to make revisions/alterations without any liability whatsoever.

AJMAN CREEK TOWERS

APARTMENT 2 BEDROOMS

UNIT - 05

TOTAL AREA: 2181.79 SQ.FT



Disclaimer:

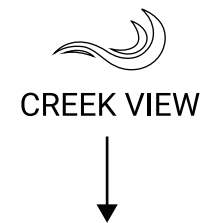
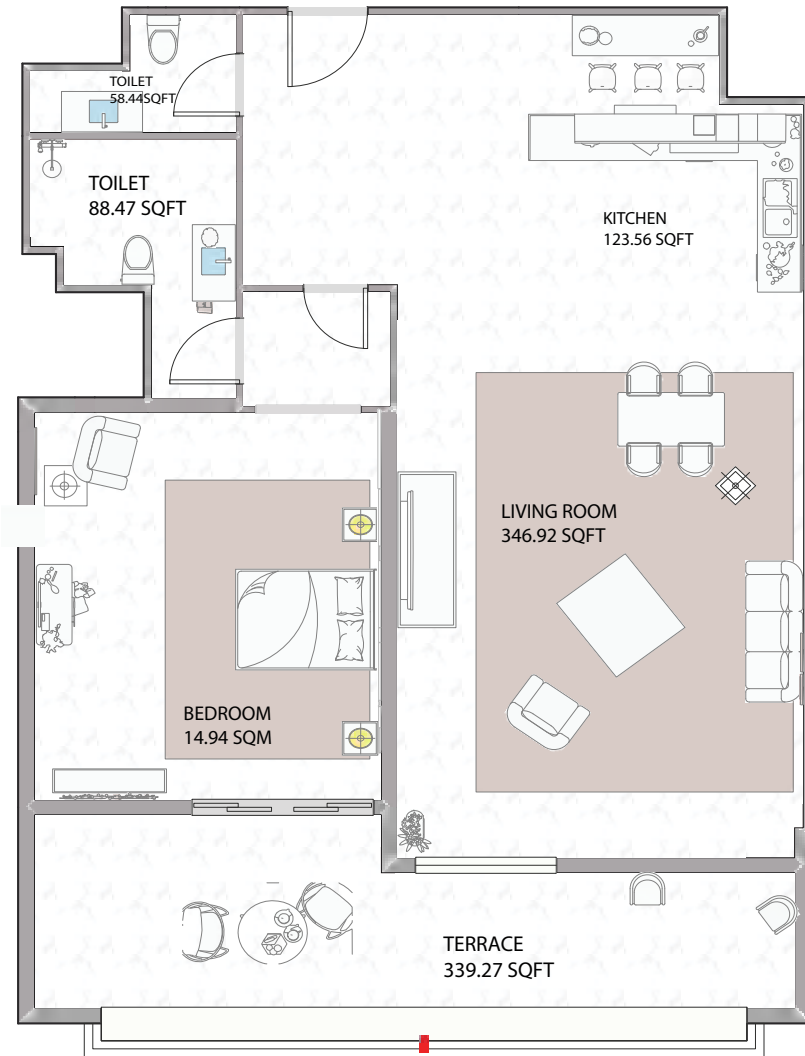
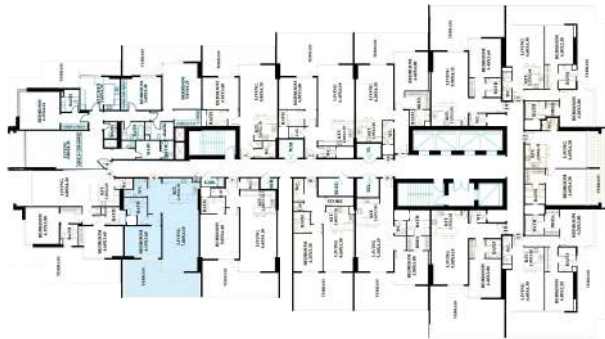
1. All materials, finishes, dimensions and drawings are approximate.
2. Information is subject to change without notice.
3. Actual suite area may vary from the stated area.
4. Drawings are not to scale.
5. The Developer reserves the right to make revisions/alterations without any liability whatsoever.

AJMAN CREEK TOWERS

APARTMENT 1 BEDROOM

UNIT - 06

TOTAL AREA: 1511.31 SQ.FT



Disclaimer:

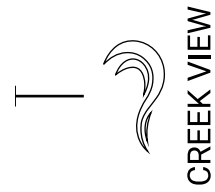
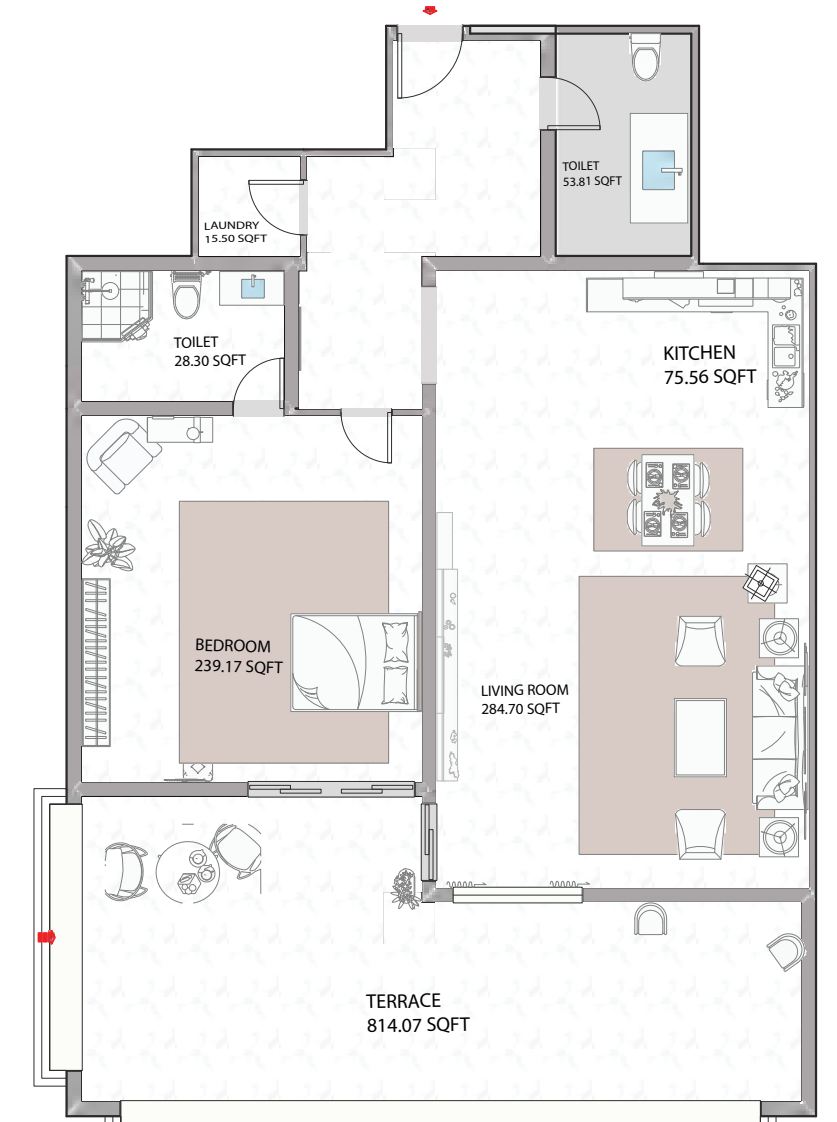
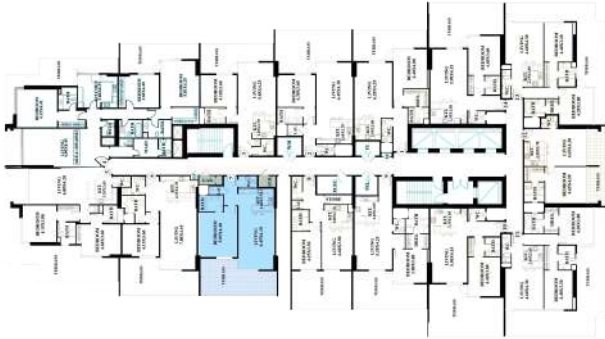
1. All materials, finishes, dimensions and drawings are approximate.
2. Information is subject to change without notice.
3. Actual suite area may vary from the stated area.
4. Drawings are not to scale.
5. The Developer reserves the right to make revisions/alterations without any liability whatsoever.

AJMAN CREEK TOWERS

APARTMENT 1 BEDROOM

UNIT - 07

TOTAL AREA: 1528.04 SQ.FT



CREEK VIEW



CREEK VIEW



CITY MALL



Disclaimer:

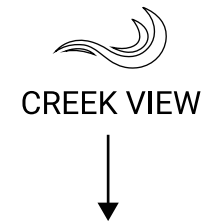
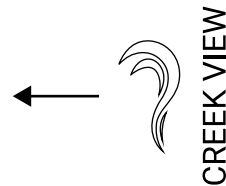
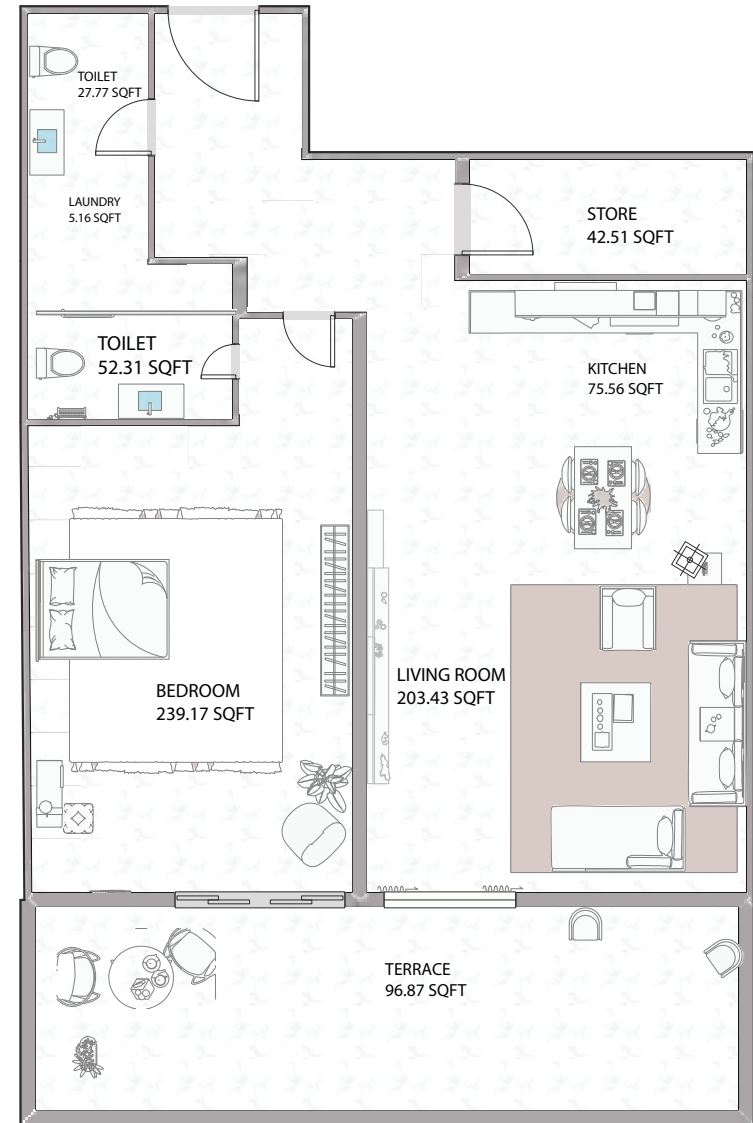
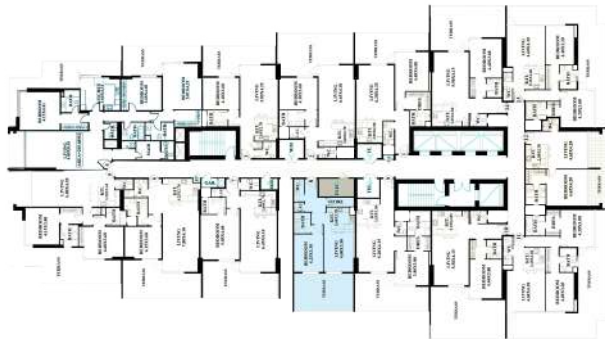
1. All materials, finishes, dimensions and drawings are approximate.
2. Information is subject to change without notice.
3. Actual suite area may vary from the stated area.
4. Drawings are not to scale.
5. The Developer reserves the right to make revisions/alterations without any liability whatsoever.

AJMAN CREEK TOWERS

APARTMENT 1 BEDROOM

UNIT - 08

TOTAL AREA: 1219.09 SQ.FT



Disclaimer:

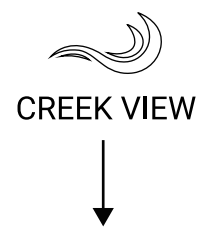
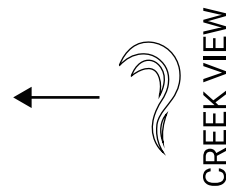
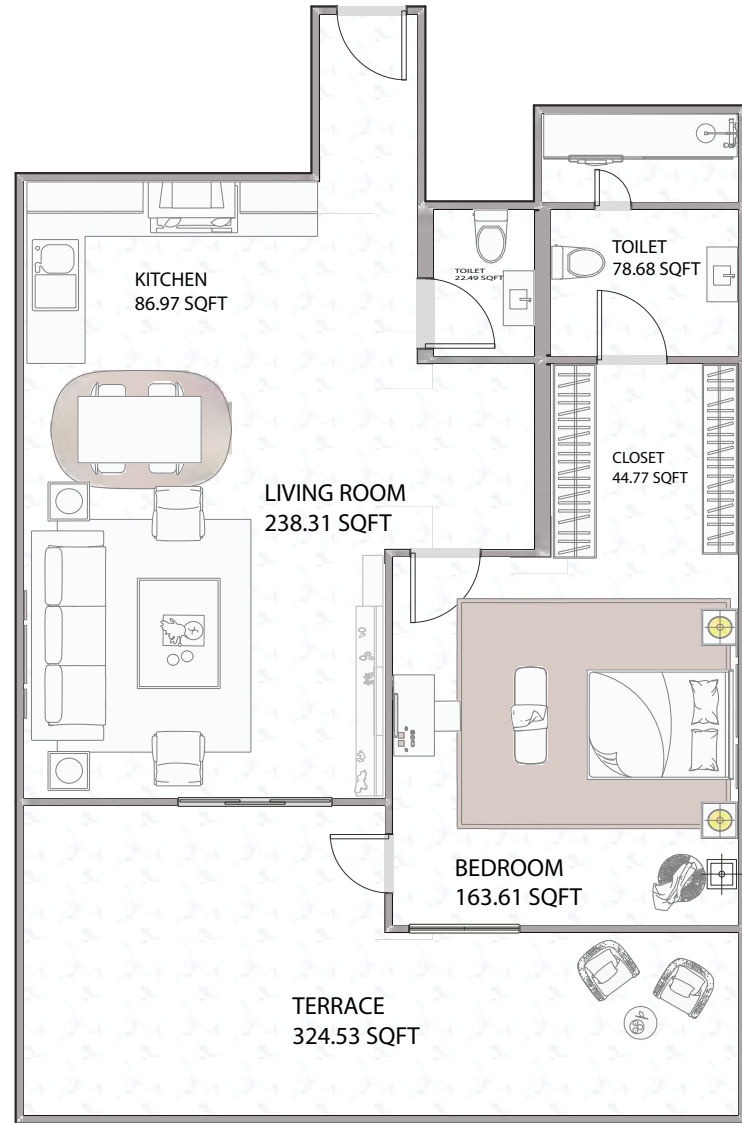
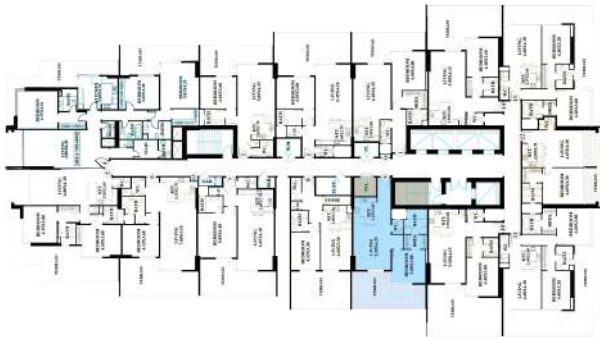
1. All materials, finishes, dimensions and drawings are approximate.
2. Information is subject to change without notice.
3. Actual suite area may vary from the stated area.
4. Drawings are not to scale.
5. The Developer reserves the right to make revisions/alterations without any liability whatsoever.

AJMAN CREEK TOWERS

APARTMENT 1 BEDROOM

UNIT - 09

TOTAL AREA: 1433.72 SQ.FT



Disclaimer:

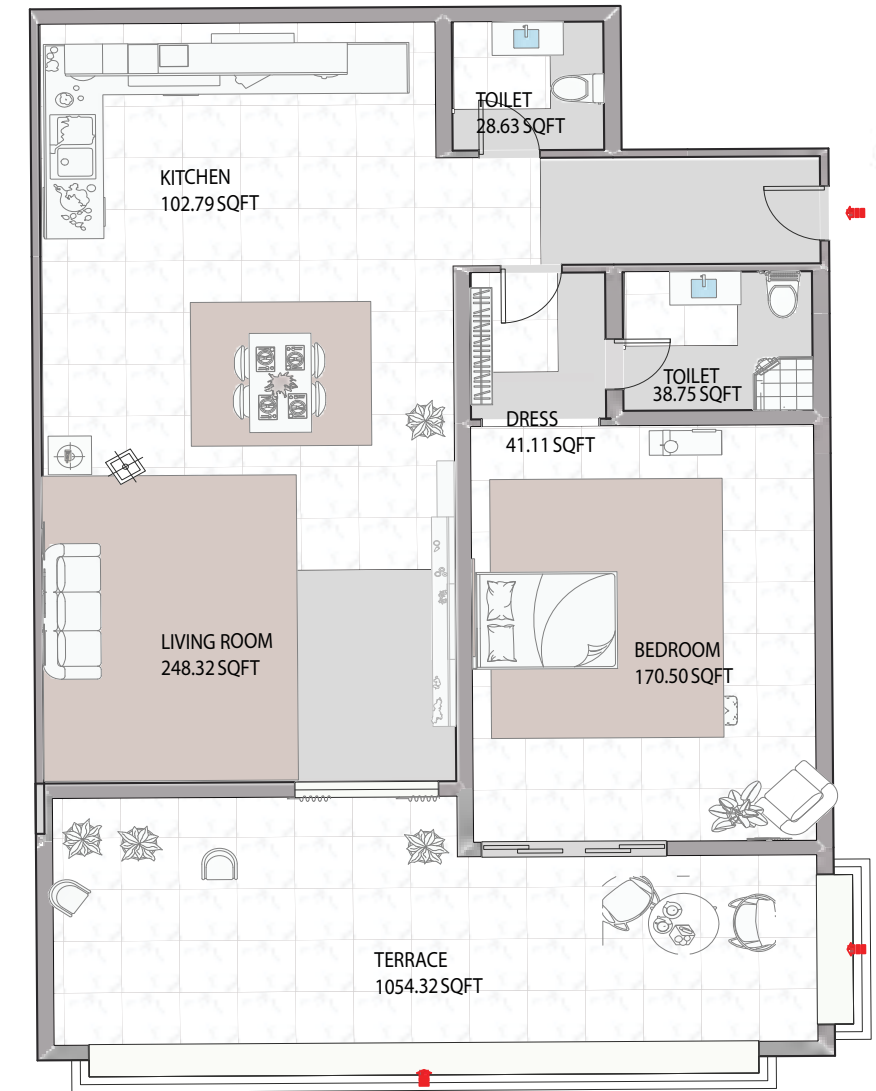
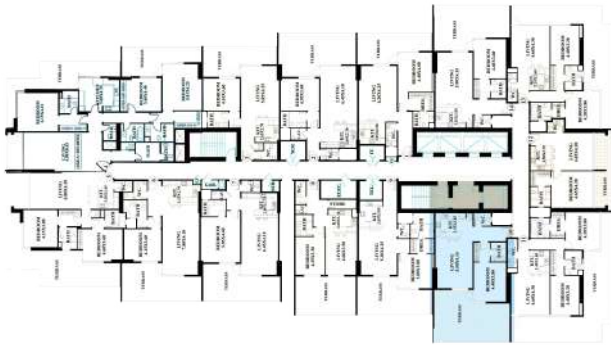
1. All materials, finishes, dimensions and drawings are approximate.
2. Information is subject to change without notice.
3. Actual suite area may vary from the stated area.
4. Drawings are not to scale.
5. The Developer reserves the right to make revisions/alterations without any liability whatsoever.

AJMAN CREEK TOWERS

APARTMENT 1 BEDROOM

UNIT - 10

TOTAL AREA: 1685.19 SQ.FT



CREEK VIEW

CITY MALL

Disclaimer:

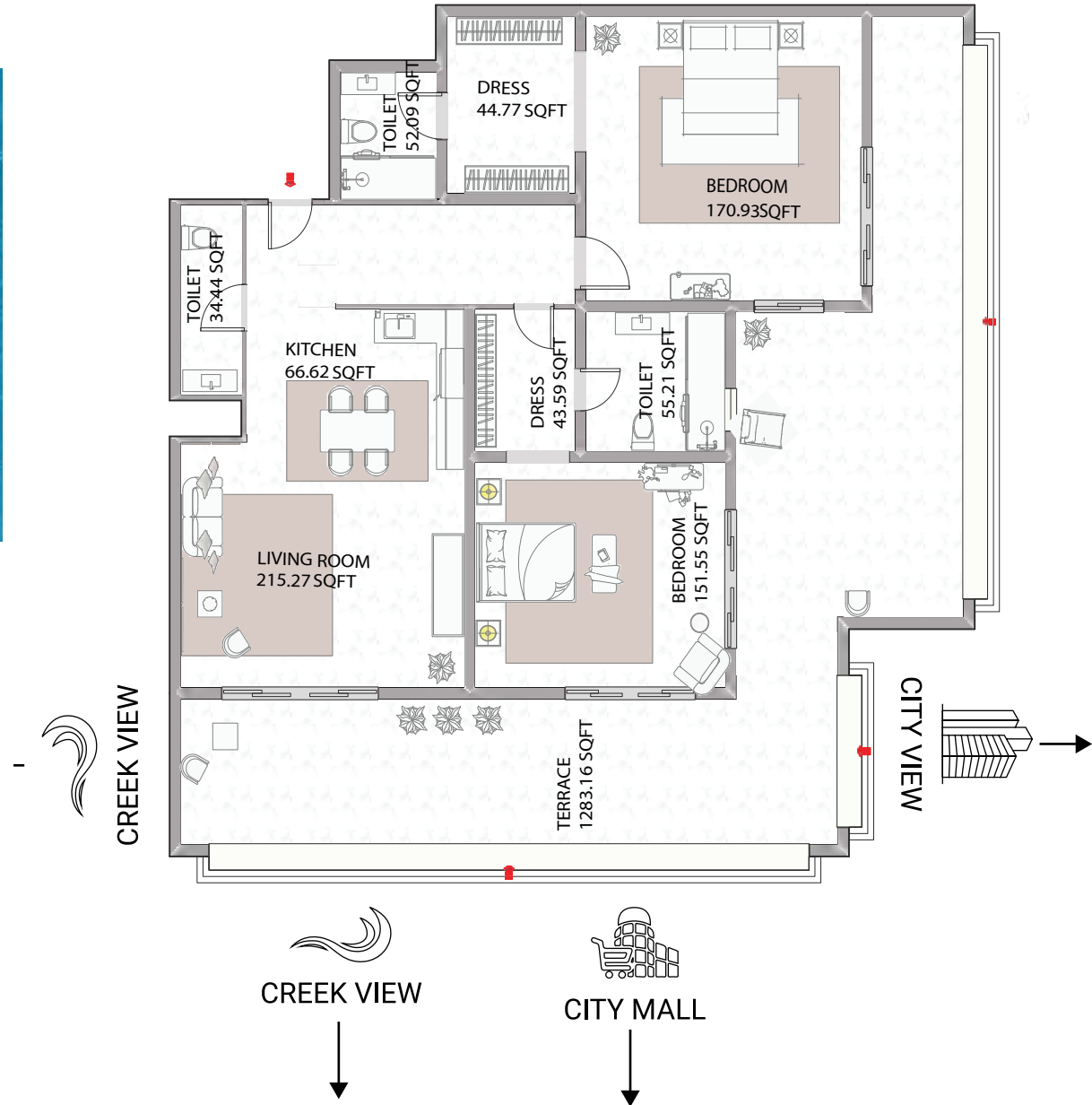
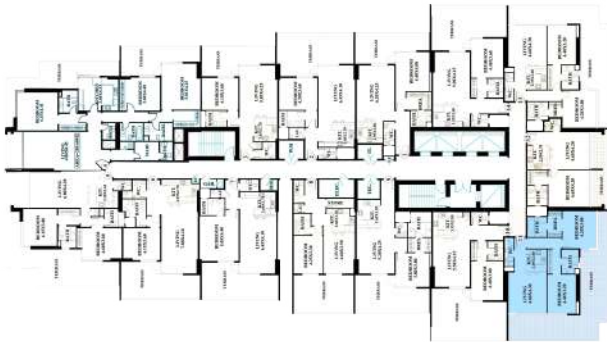
1. All materials, finishes, dimensions and drawings are approximate.
2. Information is subject to change without notice.
3. Actual suite area may vary from the stated area.
4. Drawings are not to scale.
5. The Developer reserves the right to make revisions/alterations without any liability whatsoever.

AJMAN CREEK TOWERS

APARTMENT 2 BEDROOMS

UNIT - 11

TOTAL AREA: 2277.79 SQ.FT



Disclaimer:

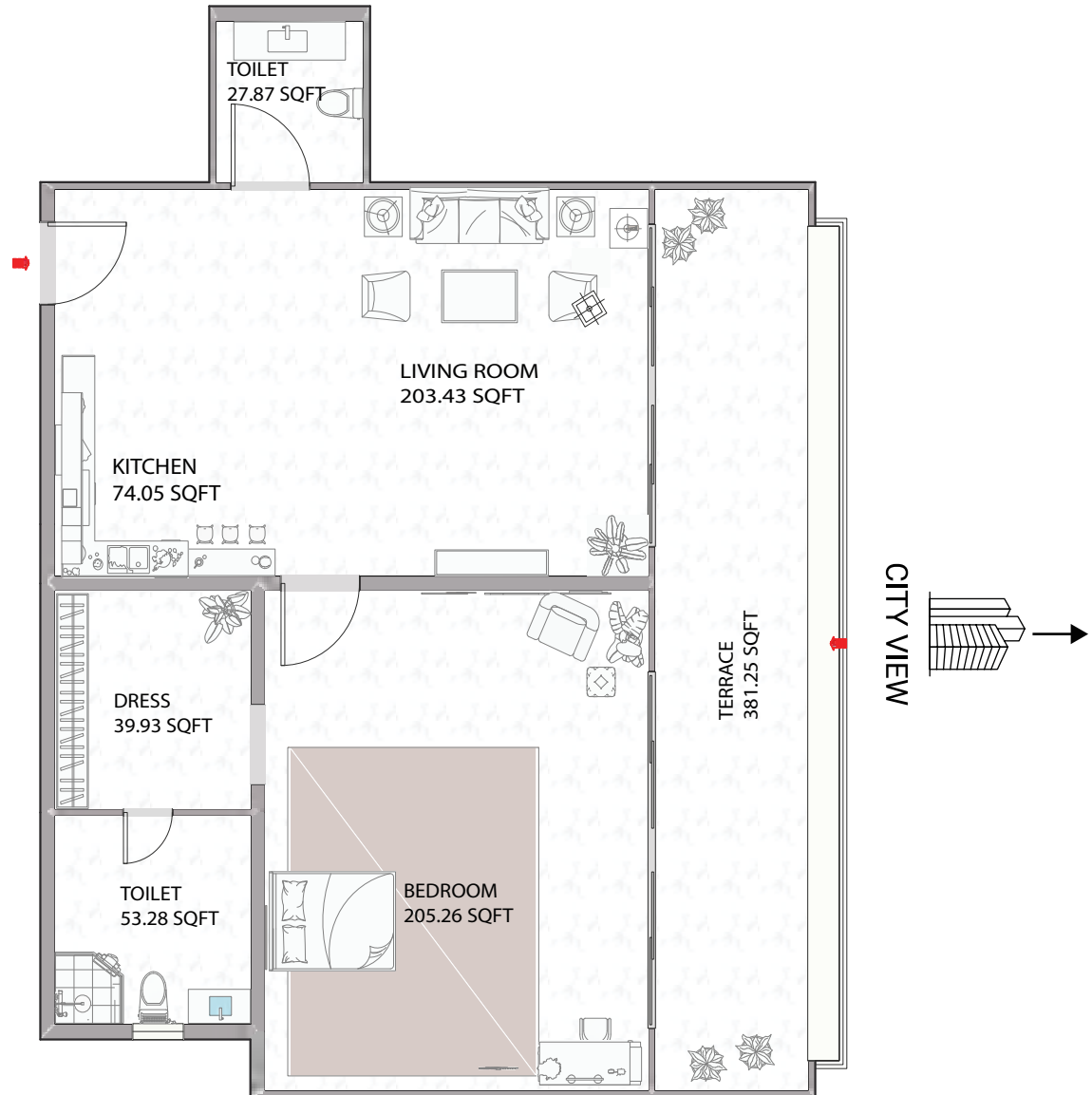
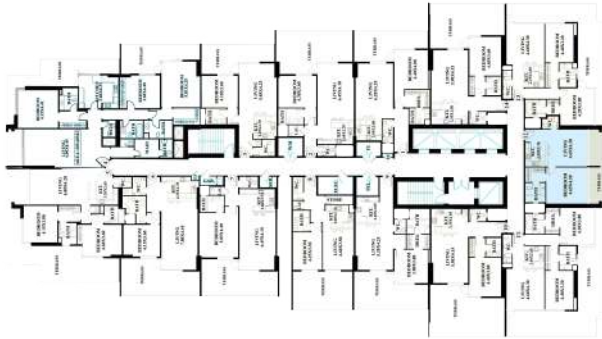
1. All materials, finishes, dimensions and drawings are approximate.
2. Information is subject to change without notice.
3. Actual suite area may vary from the stated area.
4. Drawings are not to scale.
5. The Developer reserves the right to make revisions/alterations without any liability whatsoever.

AJMAN CREEK TOWERS

APARTMENT 1 BEDROOM

UNIT - 12

TOTAL AREA: 1180.01 SQ.FT



Disclaimer:

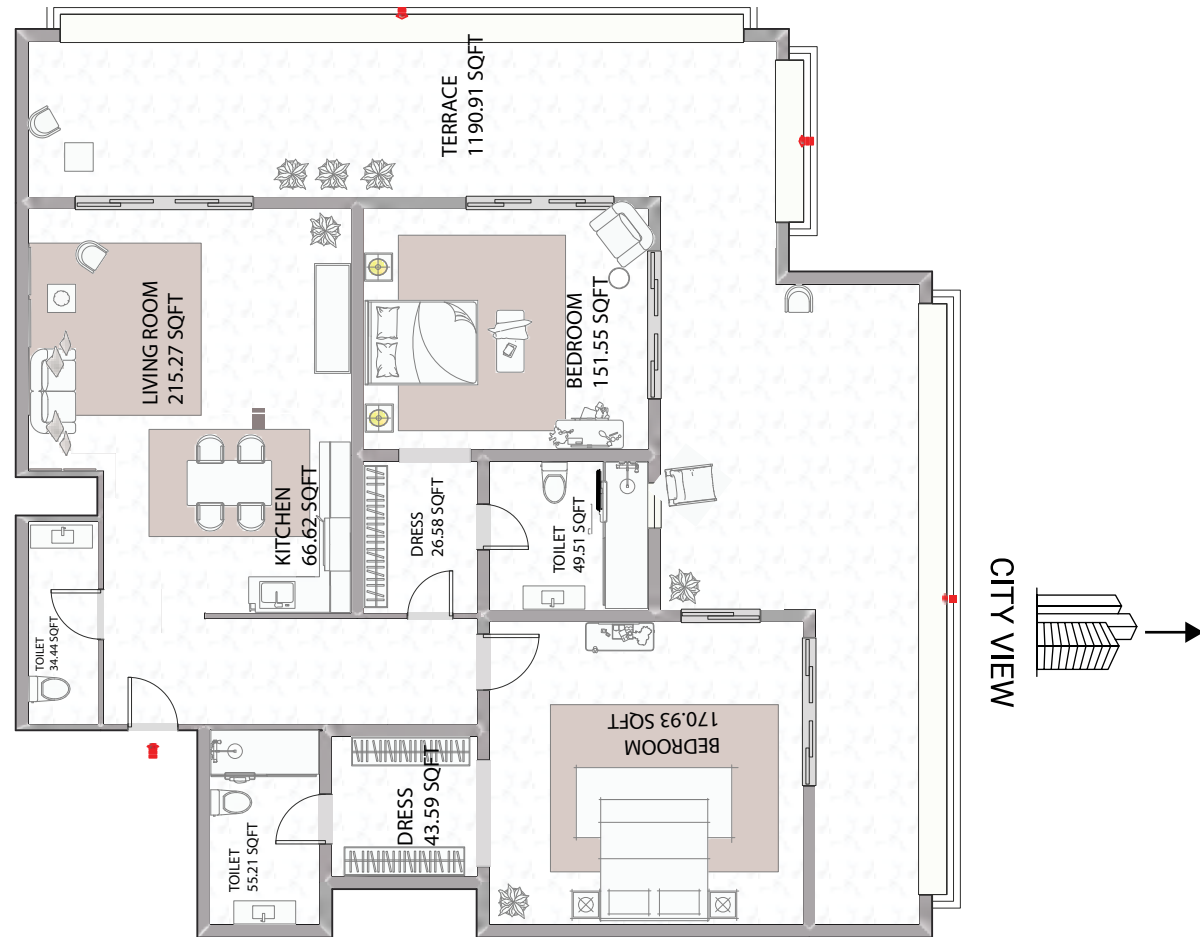
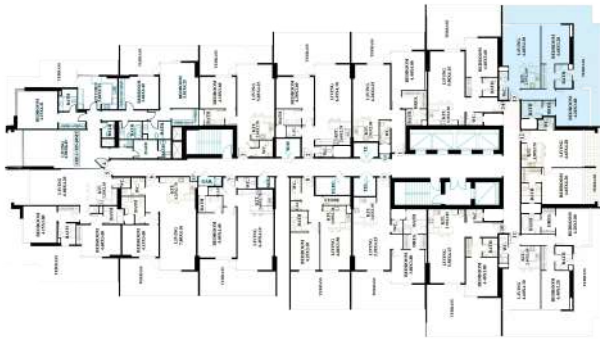
1. All materials, finishes, dimensions and drawings are approximate.
2. Information is subject to change without notice.
3. Actual suite area may vary from the stated area.
4. Drawings are not to scale.
5. The Developer reserves the right to make revisions/alterations without any liability whatsoever.

AJMAN CREEK TOWERS

APARTMENT 2 BEDROOMS

UNIT - 13

TOTAL AREA: 2112.63 SQ.FT



Disclaimer:

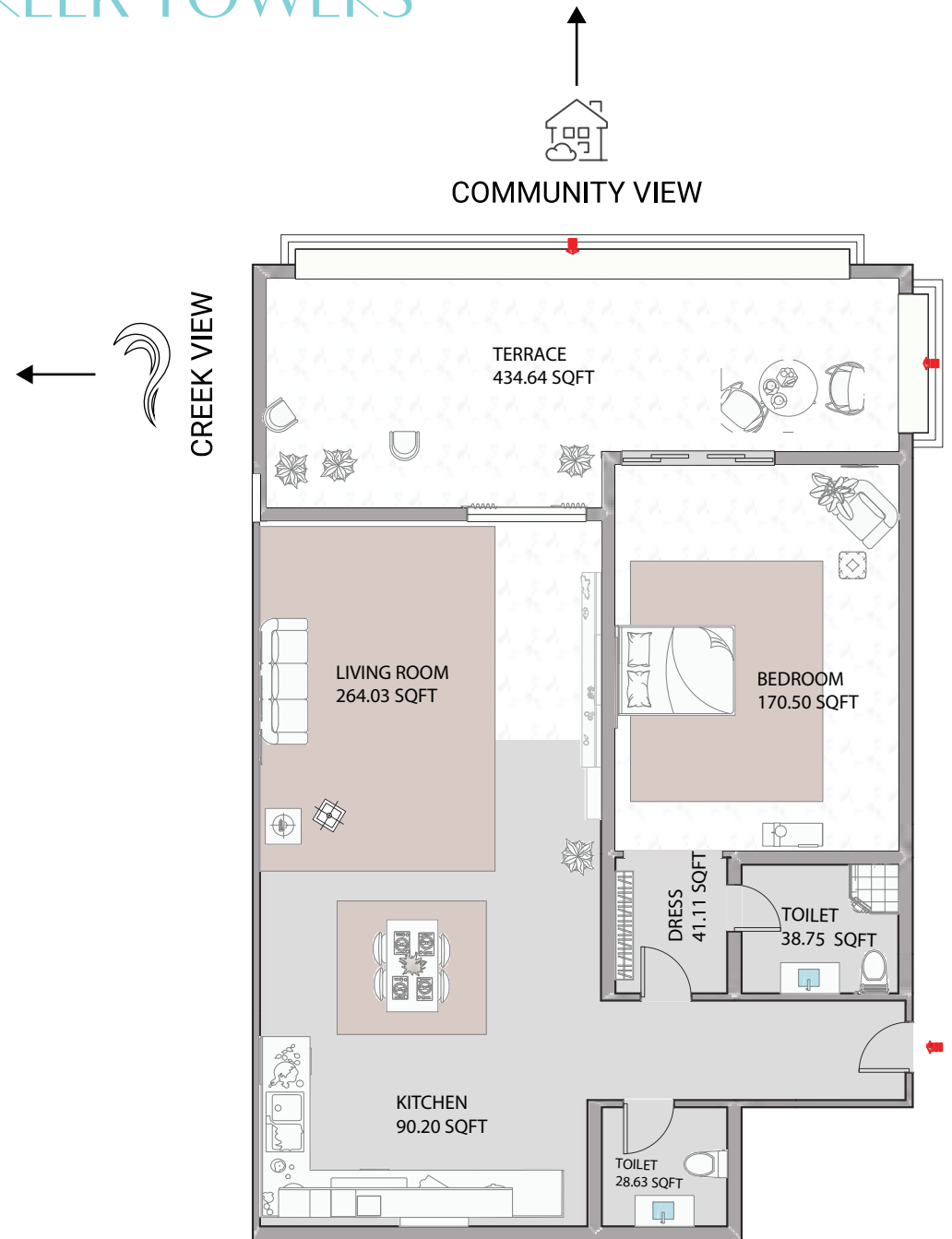
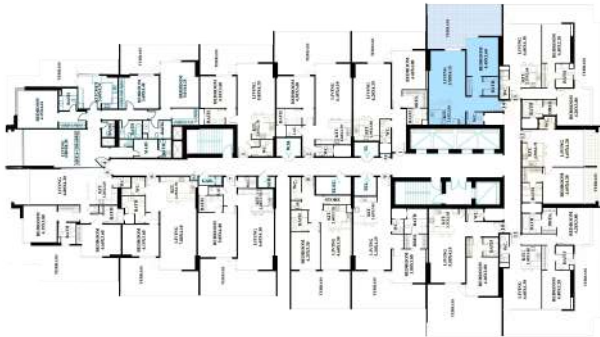
1. All materials, finishes, dimensions and drawings are approximate.
2. Information is subject to change without notice.
3. Actual suite area may vary from the stated area.
4. Drawings are not to scale.
5. The Developer reserves the right to make revisions/alterations without any liability whatsoever.

AJMAN CREEK TOWERS

APARTMENT 1 BEDROOM

UNIT - 14

TOTAL AREA: 1590.73 SQ.FT



Disclaimer:

1. All materials, finishes, dimensions and drawings are approximate.
2. Information is subject to change without notice.
3. Actual suite area may vary from the stated area.
4. Drawings are not to scale.
5. The Developer reserves the right to make revisions/alterations without any liability whatsoever.

TYPICAL PLAN



- 3 Bedroom Apartment
- 2 Bedroom Apartment
- 1 Bedroom Apartment

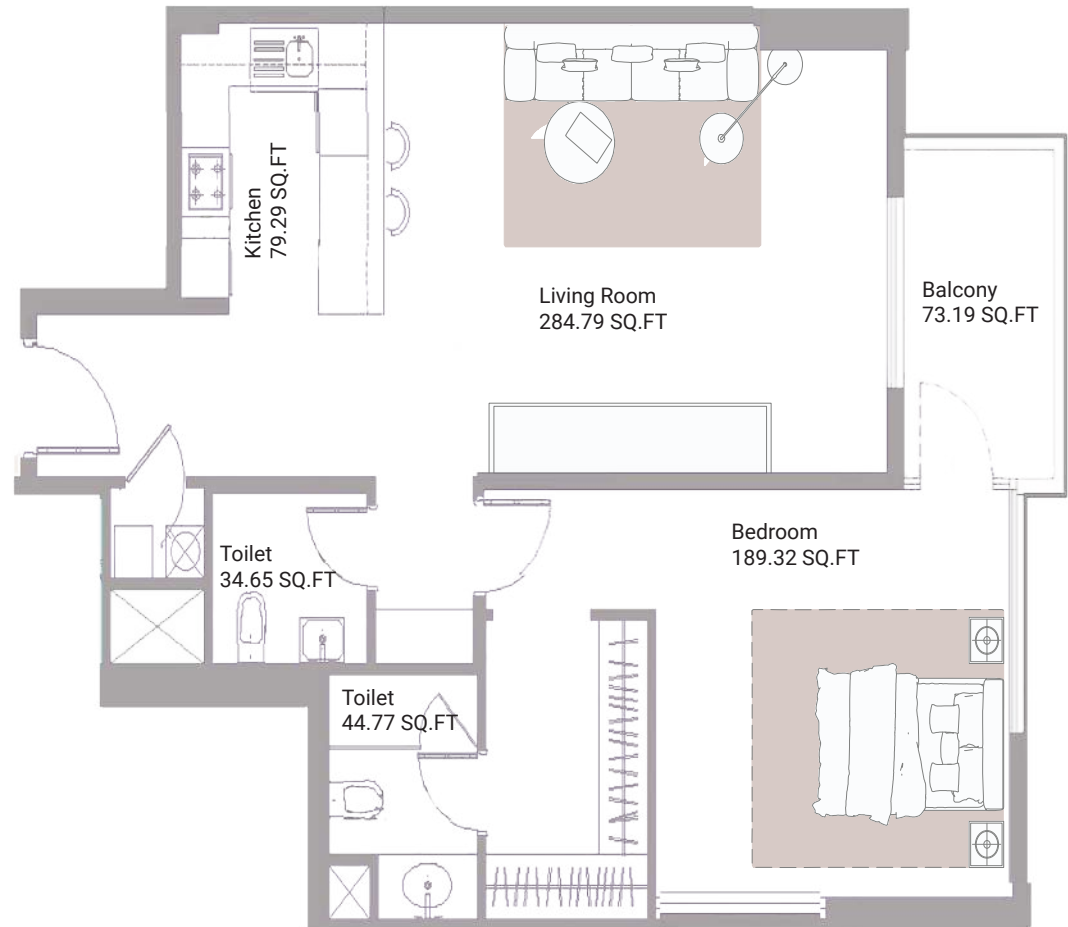
AJMAN CREEK TOWERS

APARTMENT

1 BEDROOM

UNIT - 01

TOTAL AREA: 1240.03 SQ.FT



Disclaimer:

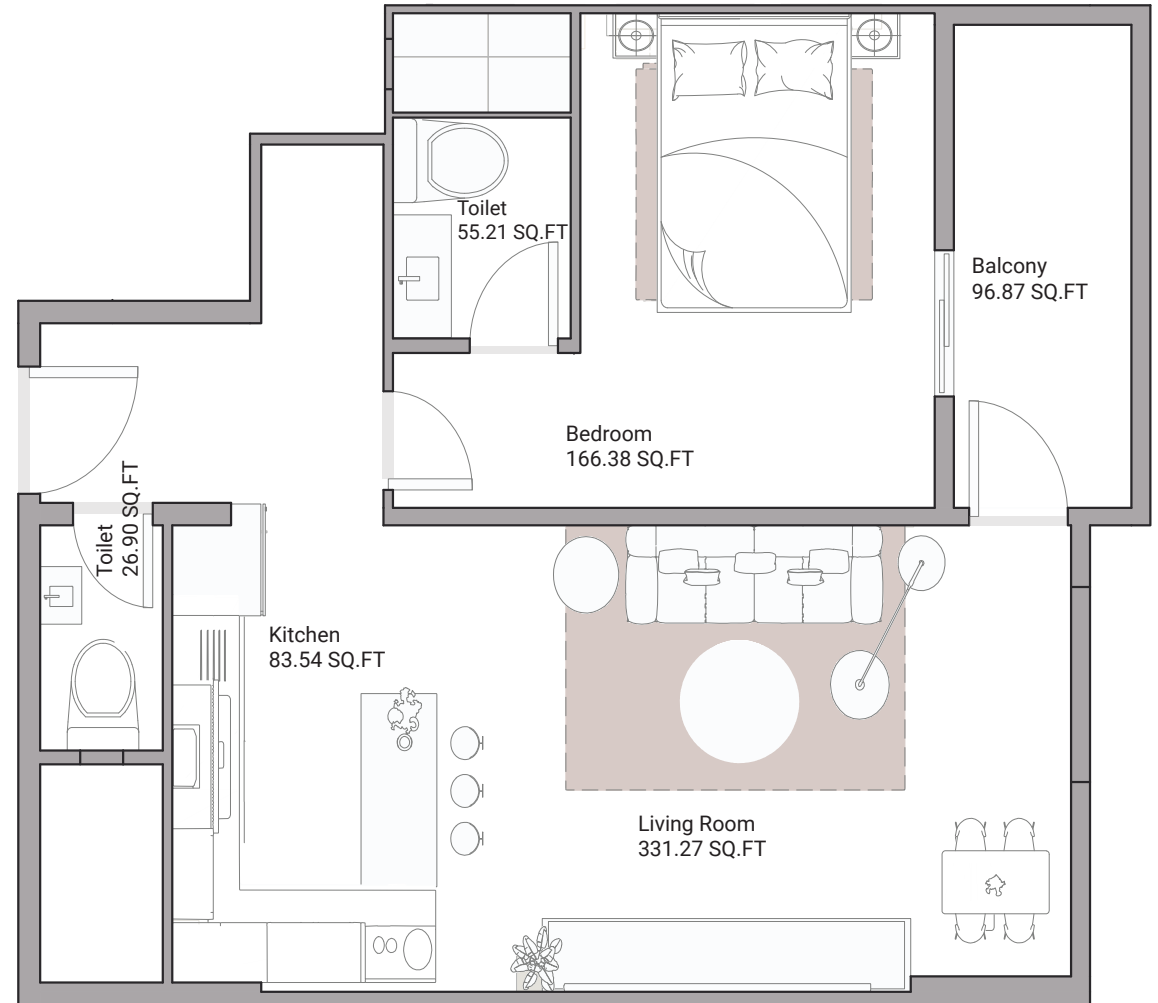
1. All materials, finishes, dimensions and drawings are approximate.
2. Information is subject to change without notice.
3. Actual suite area may vary from the stated area.
4. Drawings are not to scale.
5. The Developer reserves the right to make revisions/alterations without any liability whatsoever.

AJMAN CREEK TOWERS

APARTMENT 1 BEDROOM

UNIT - 02

TOTAL AREA: 1229.21 SQ.FT



Disclaimer:

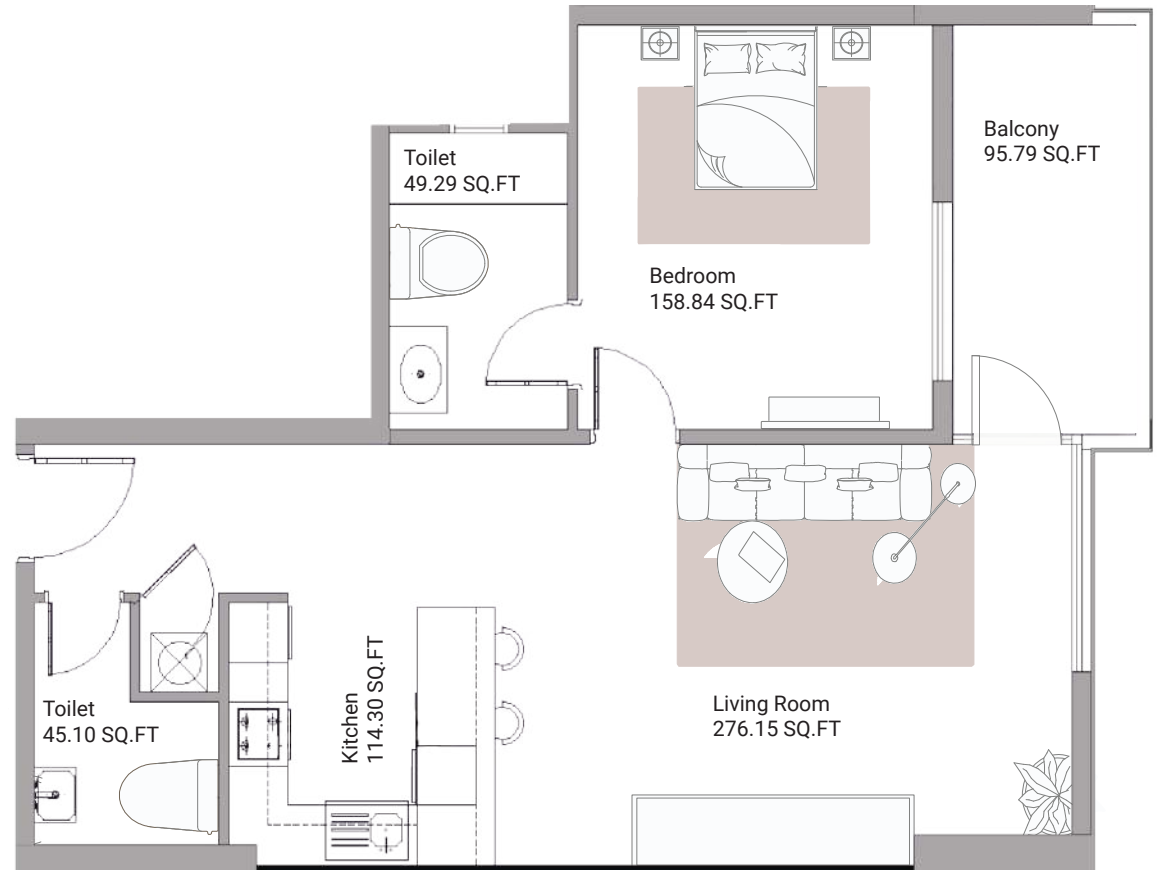
1. All materials, finishes, dimensions and drawings are approximate.
2. Information is subject to change without notice.
3. Actual suite area may vary from the stated area.
4. Drawings are not to scale.
5. The Developer reserves the right to make revisions/alterations without any liability whatsoever.

AJMAN CREEK TOWERS

APARTMENT 1 BEDROOM

UNIT - 03

TOTAL AREA: 1117.46 SQ.FT



Disclaimer:

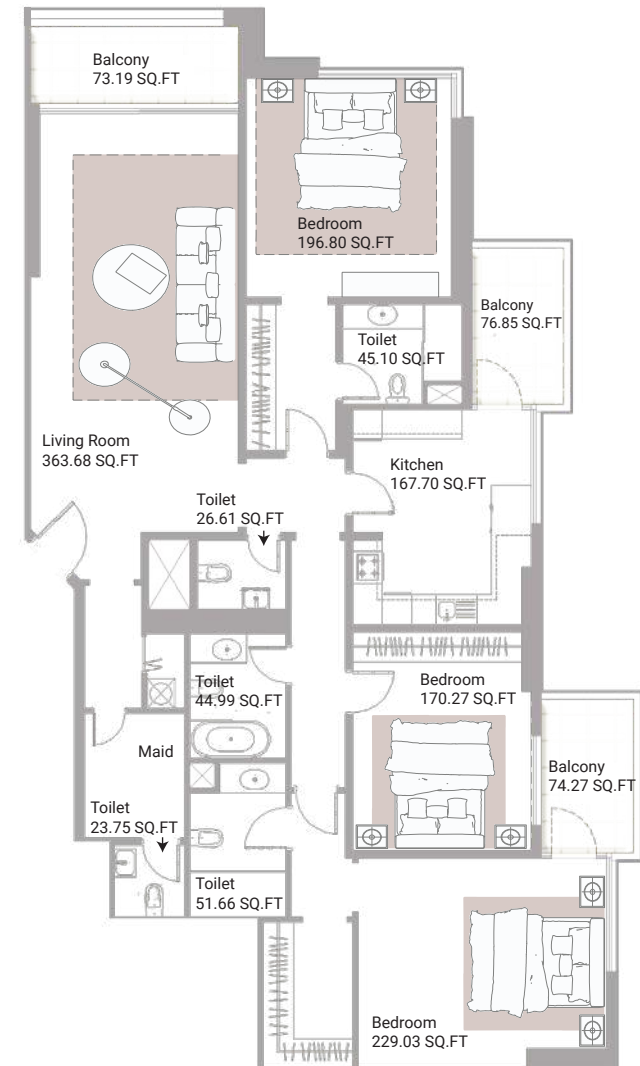
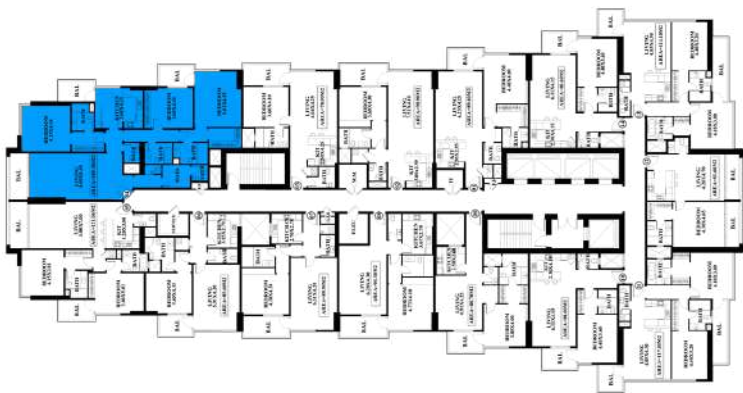
1. All materials, finishes, dimensions and drawings are approximate.
2. Information is subject to change without notice.
3. Actual suite area may vary from the stated area.
4. Drawings are not to scale.
5. The Developer reserves the right to make revisions/alterations without any liability whatsoever.

AJMAN CREEK TOWERS

APARTMENT 3 BEDROOMS

UNIT - 04

TOTAL AREA: 2766.66 SQ.FT



Disclaimer:

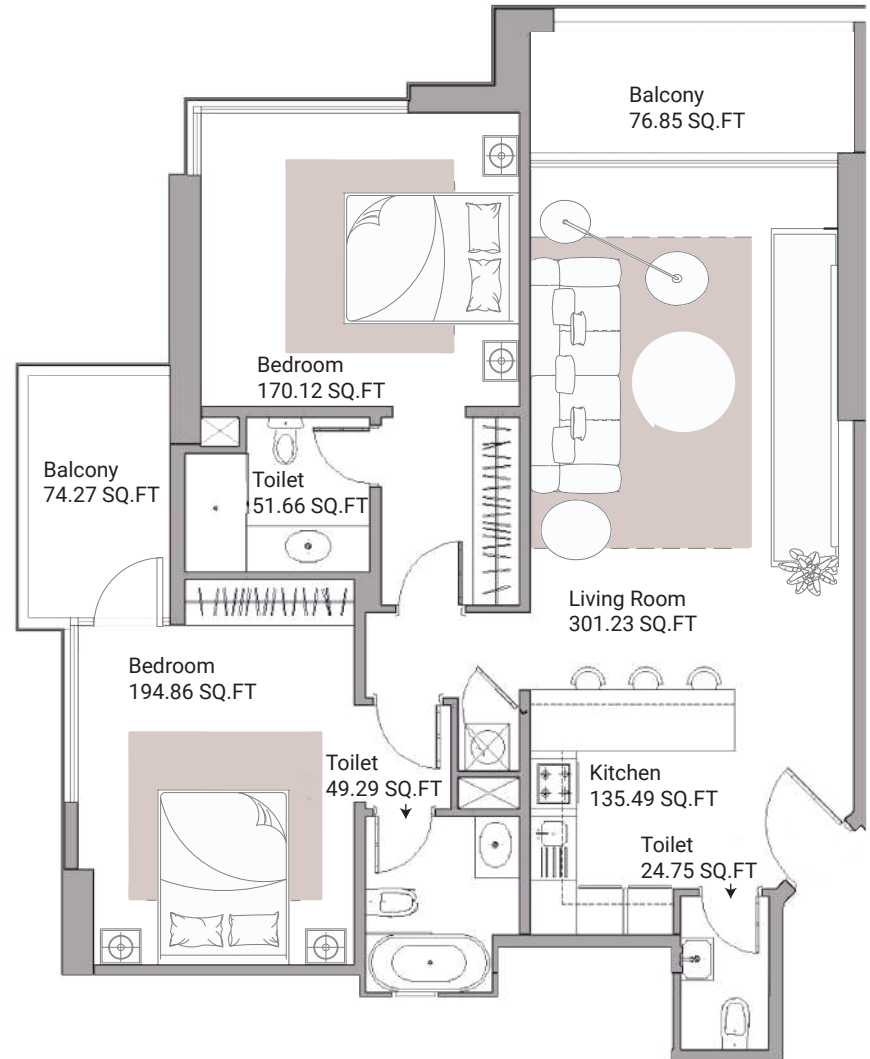
1. All materials, finishes, dimensions and drawings are approximate.
2. Information is subject to change without notice.
3. Actual suite area may vary from the stated area.
4. Drawings are not to scale.
5. The Developer reserves the right to make revisions/alterations without any liability whatsoever.

AJMAN CREEK TOWERS

APARTMENT 2 BEDROOMS

UNIT - 05

TOTAL AREA: 1673.94 SQ.FT



Disclaimer:

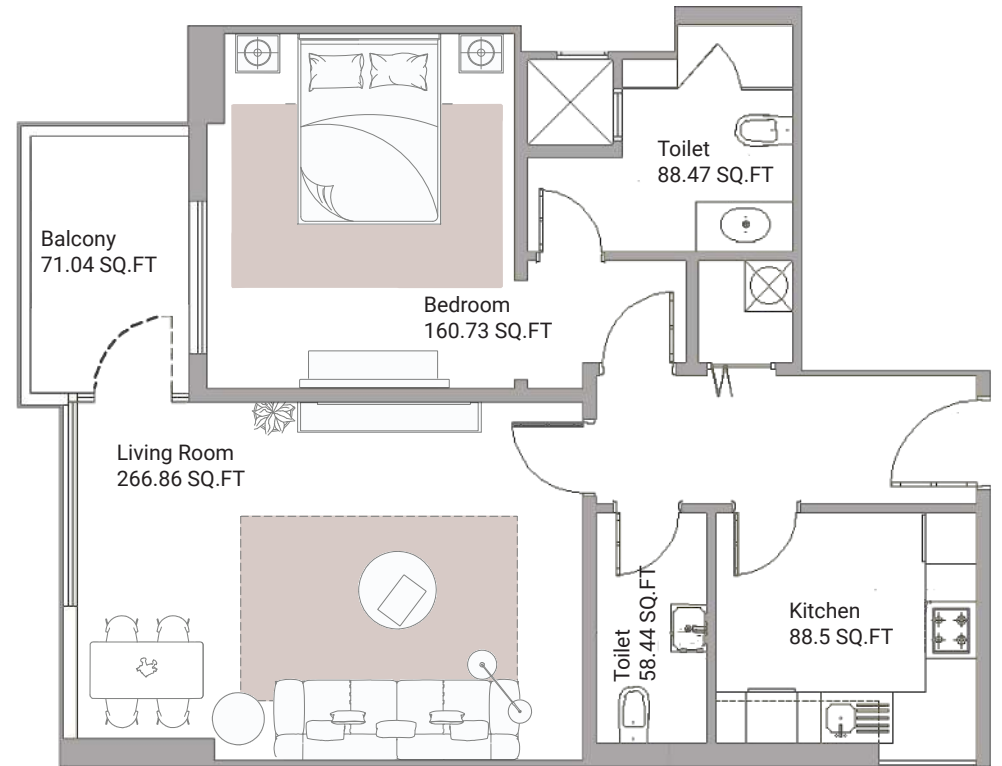
1. All materials, finishes, dimensions and drawings are approximate.
2. Information is subject to change without notice.
3. Actual suite area may vary from the stated area.
4. Drawings are not to scale.
5. The Developer reserves the right to make revisions/alterations without any liability whatsoever.

AJMAN CREEK TOWERS

APARTMENT 1 BEDROOM

UNIT - 06

TOTAL AREA: 1143.32 SQ.FT



Disclaimer:

1. All materials, finishes, dimensions and drawings are approximate.
2. Information is subject to change without notice.
3. Actual suite area may vary from the stated area.
4. Drawings are not to scale.
5. The Developer reserves the right to make revisions/alterations without any liability whatsoever.

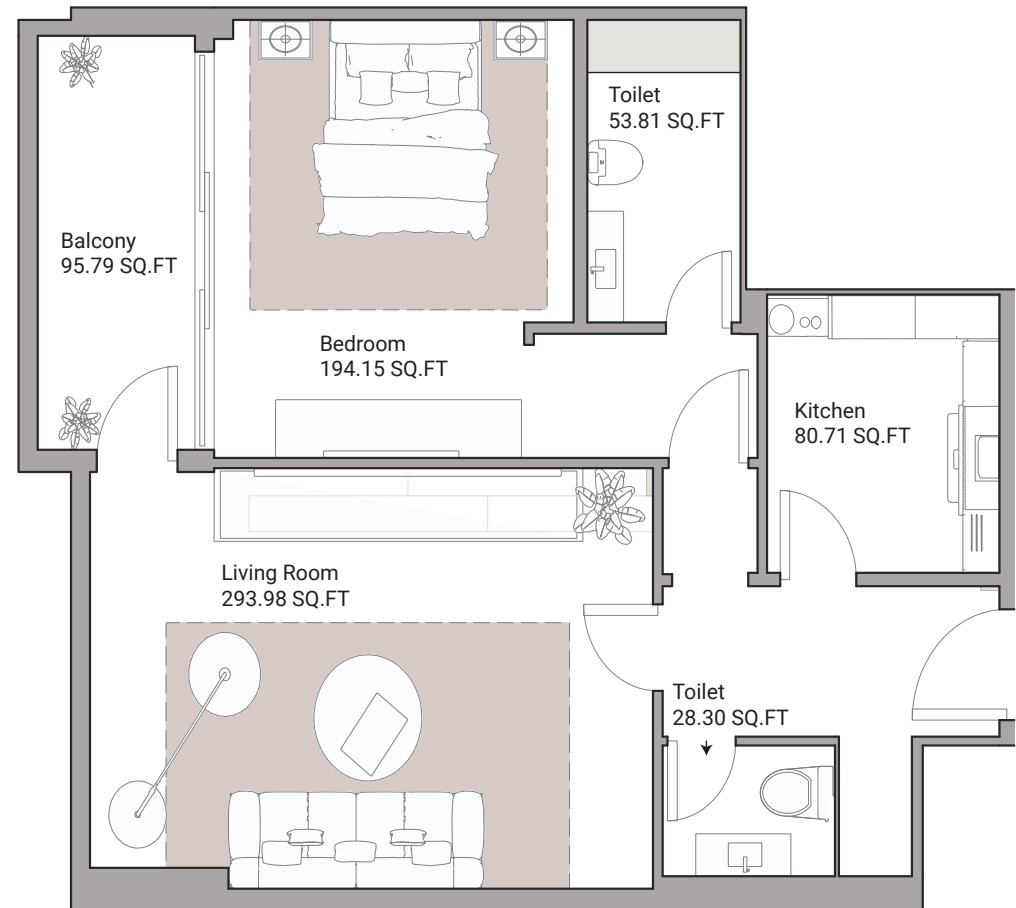
AJMAN CREEK TOWERS

APARTMENT

1 BEDROOM

UNIT - 07

TOTAL AREA: 1205.17 SQ.FT



Disclaimer:

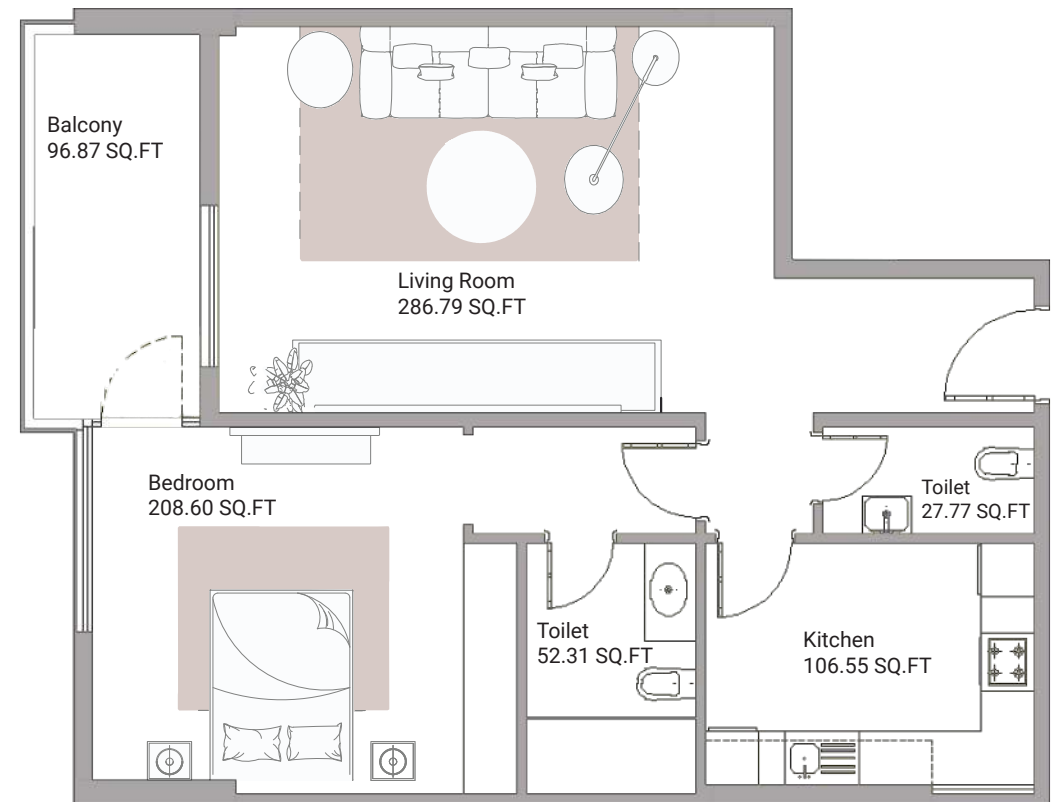
1. All materials, finishes, dimensions and drawings are approximate.
2. Information is subject to change without notice.
3. Actual suite area may vary from the stated area.
4. Drawings are not to scale.
5. The Developer reserves the right to make revisions/alterations without any liability whatsoever.

AJMAN CREEK TOWERS

APARTMENT 1 BEDROOM

UNIT - 08

TOTAL AREA: 1234.97 SQ.FT



Disclaimer:

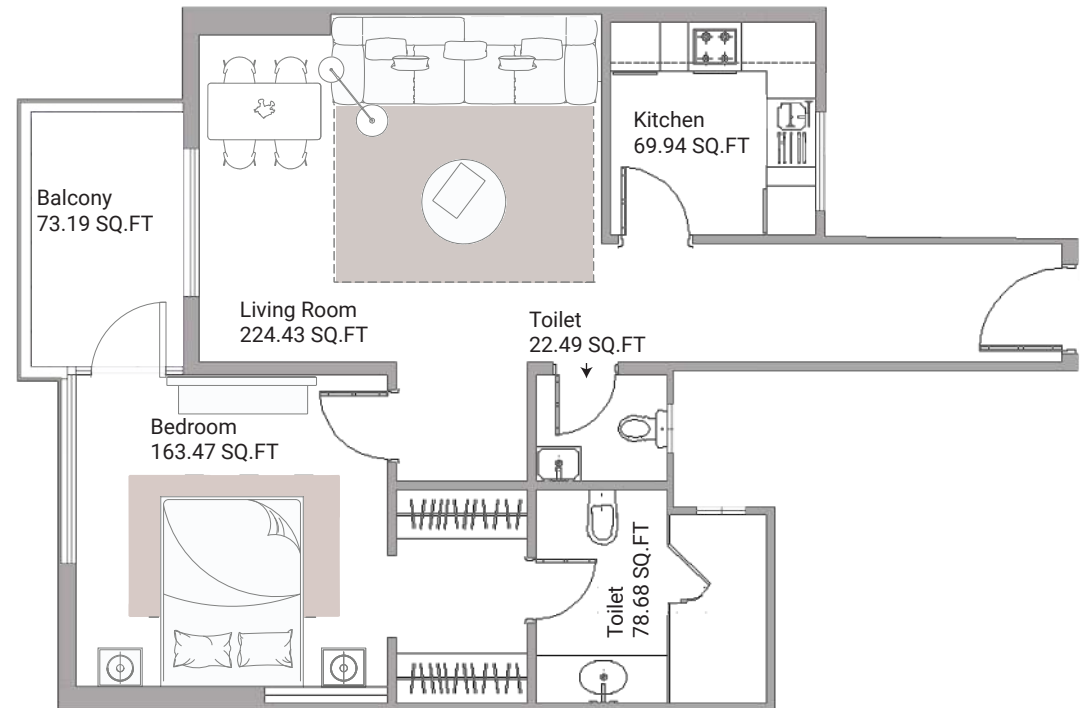
1. All materials, finishes, dimensions and drawings are approximate.
2. Information is subject to change without notice.
3. Actual suite area may vary from the stated area.
4. Drawings are not to scale.
5. The Developer reserves the right to make revisions/alterations without any liability whatsoever.

AJMAN CREEK TOWERS

APARTMENT 1 BEDROOM

UNIT - 09

TOTAL AREA: 1104.39 SQ.FT



Disclaimer:

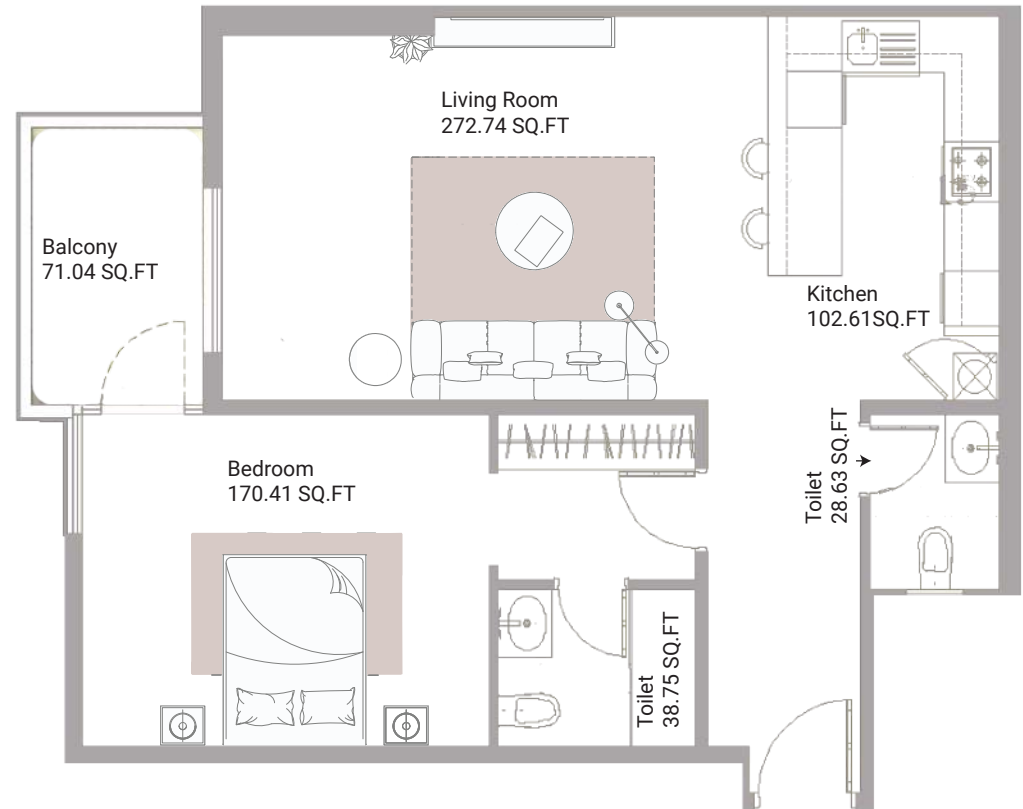
1. All materials, finishes, dimensions and drawings are approximate.
2. Information is subject to change without notice.
3. Actual suite area may vary from the stated area.
4. Drawings are not to scale.
5. The Developer reserves the right to make revisions/alterations without any liability whatsoever.

AJMAN CREEK TOWERS

APARTMENT 1 BEDROOM

UNIT - 10

TOTAL AREA: 1128.28 SQ.FT



Disclaimer:

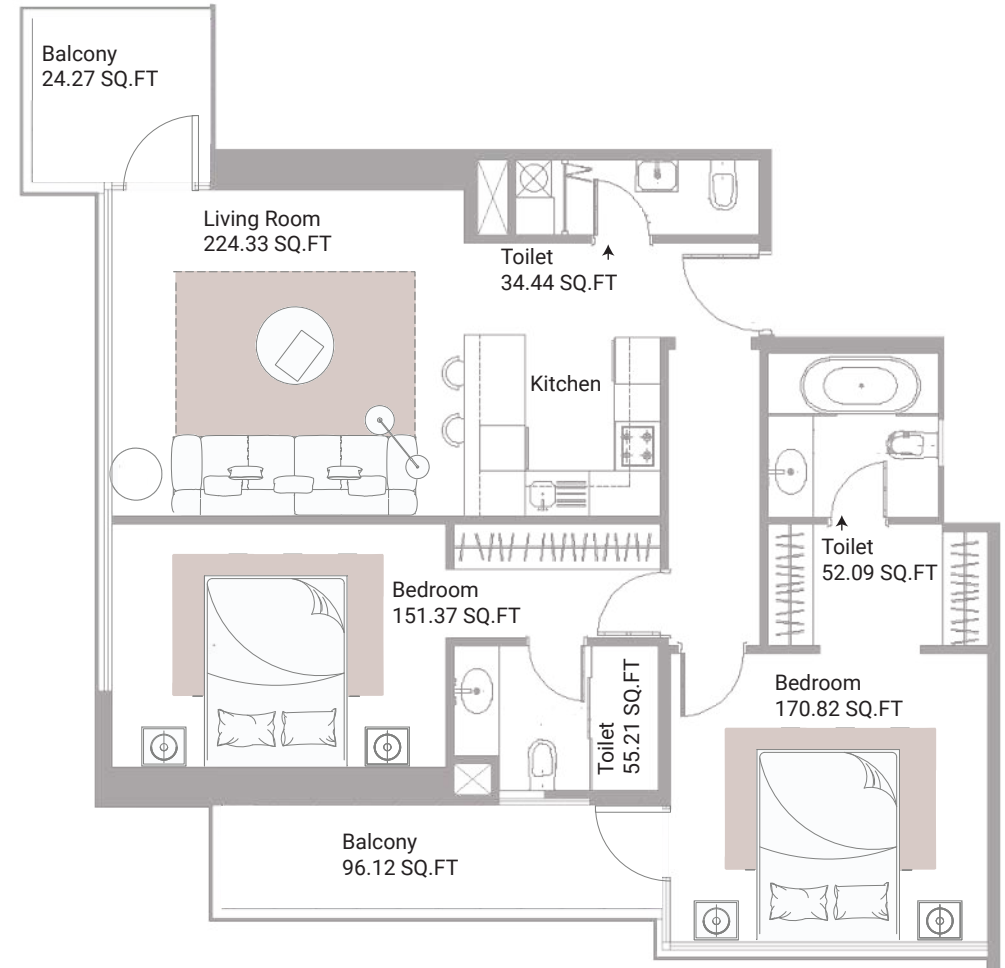
1. All materials, finishes, dimensions and drawings are approximate.
2. Information is subject to change without notice.
3. Actual suite area may vary from the stated area.
4. Drawings are not to scale.
5. The Developer reserves the right to make revisions/alterations without any liability whatsoever.

AJMAN CREEK TOWERS

APARTMENT 2 BEDROOMS

UNIT - 11

TOTAL AREA: 1597.62 SQ.FT



Disclaimer:

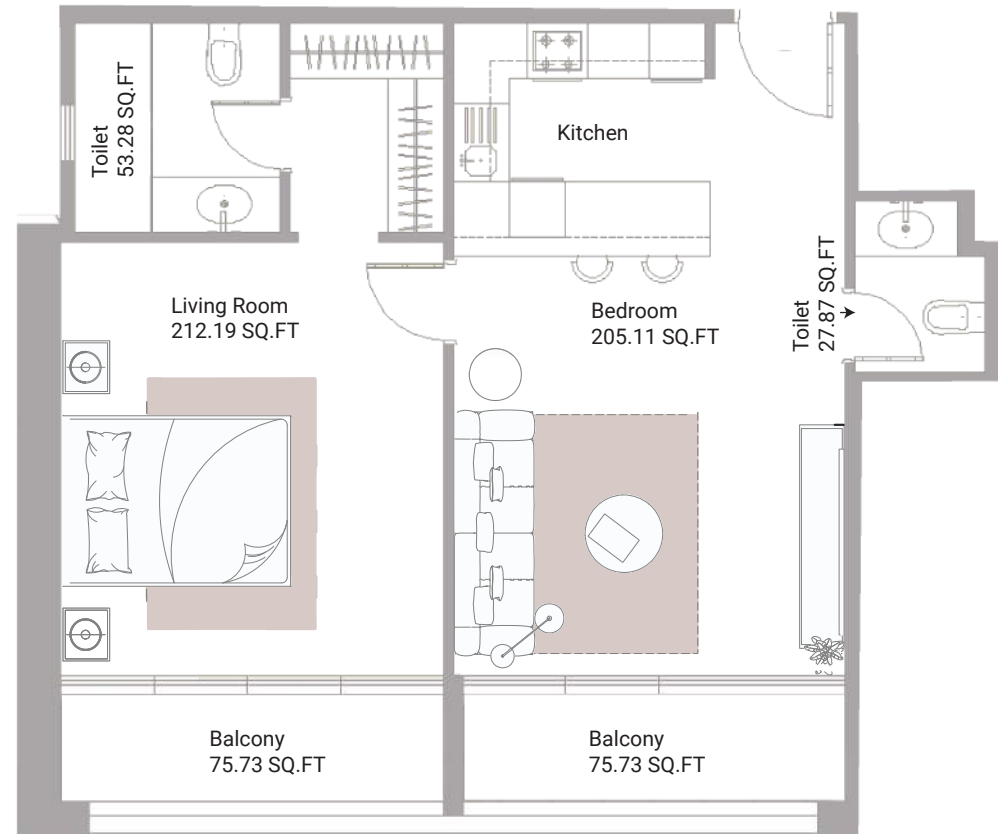
1. All materials, finishes, dimensions and drawings are approximate.
2. Information is subject to change without notice.
3. Actual suite area may vary from the stated area.
4. Drawings are not to scale.
5. The Developer reserves the right to make revisions/alterations without any liability whatsoever.

AJMAN CREEK TOWERS

APARTMENT 1 BEDROOM

UNIT - 12

TOTAL AREA: 1108.46 SQ.FT



Disclaimer:

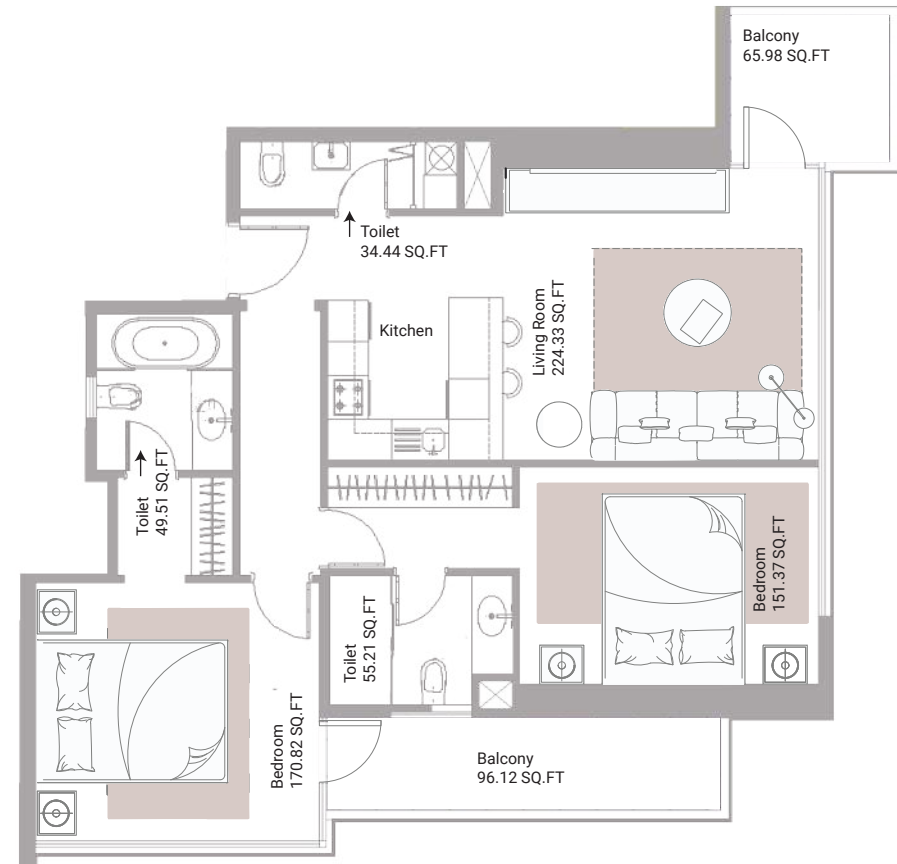
1. All materials, finishes, dimensions and drawings are approximate.
2. Information is subject to change without notice.
3. Actual suite area may vary from the stated area.
4. Drawings are not to scale.
5. The Developer reserves the right to make revisions/alterations without any liability whatsoever.

AJMAN CREEK TOWERS

APARTMENT
2 BEDROOMS

UNIT - 13

TOTAL AREA: 1561.77 SQ.FT



Disclaimer:

1. All materials, finishes, dimensions and drawings are approximate.
2. Information is subject to change without notice.
3. Actual suite area may vary from the stated area.
4. Drawings are not to scale.
5. The Developer reserves the right to make revisions/alterations without any liability whatsoever.

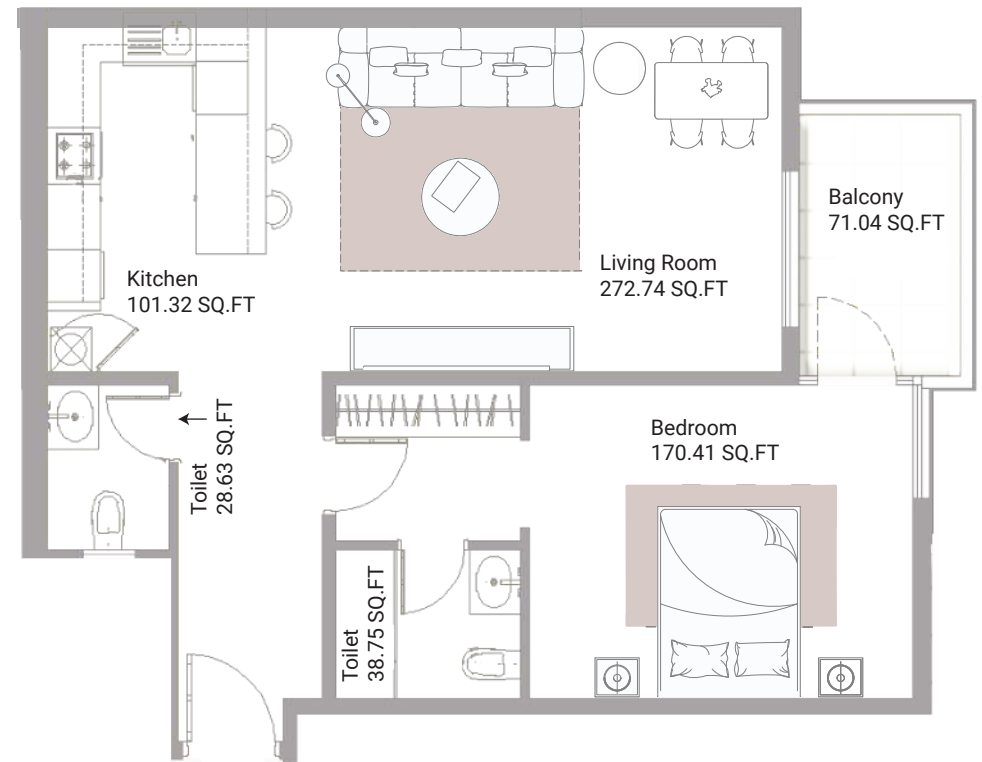
AJMAN CREEK TOWERS

APARTMENT

1 BEDROOM

UNIT - 14

TOTAL AREA: 1127.72 SQ.FT



Disclaimer:

1. All materials, finishes, dimensions and drawings are approximate.
2. Information is subject to change without notice.
3. Actual suite area may vary from the stated area.
4. Drawings are not to scale.
5. The Developer reserves the right to make revisions/alterations without any liability whatsoever.