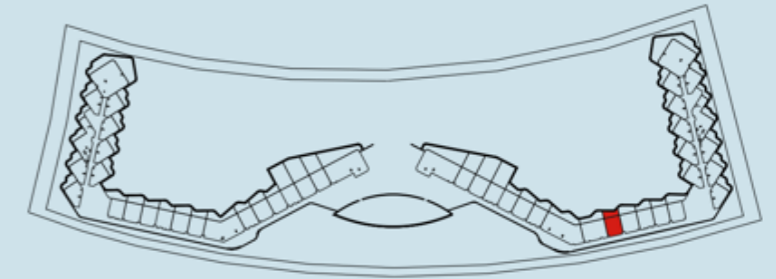
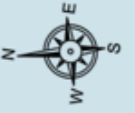




**SORA**  
BEACH RESIDENCES

# KEY PLAN

LEVEL-3



## 1BHK TYPE 1

Internal Living Area 664.03 sq.ft.

Outdoor Living Area 215.82 sq.ft.

**Total Living Area 879.84 sq.ft.**

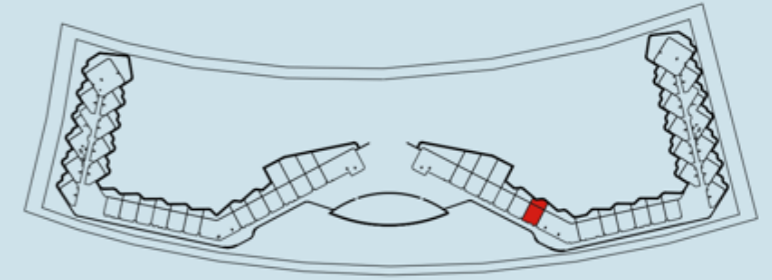
### DISCLAIMER:

All measurements are indicative and are for marketing purposes only. All efforts have been made to ensure their accuracy, however these layouts are subject to change at the discretion of the developer and should not be relied upon as final. The actual area may vary from the stated area and the developer reserves the right to make the revisions/alterations, at its absolute discretion, without any liability whatsoever



# KEY PLAN

LEVEL-3



## 1BHK TYPE 1A

Internal Living Area 658.32 sq.ft.

Outdoor Living Area 245.63 sq.ft.

**Total Living Area 903.95 sq.ft.**

**DISCLAIMER:**

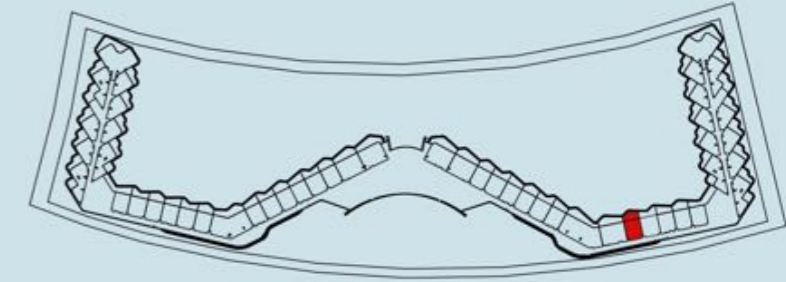
All measurements are indicative and are for marketing purposes only. All efforts have been made to ensure their accuracy, however these layouts are subject to change at the discretion of the developer and should not be relied upon as final. The actual area may vary from the stated area and the developer reserves the right to make the revisions/alterations, at its absolute discretion, without any liability whatsoever





# KEY PLAN

LEVEL-4



## 1BHK TYPE 2

A-415

Internal Living Area 717.52 sq.ft.

Outdoor Living Area 248.22 sq.ft.

**Total Living Area 965.74 sq.ft.**

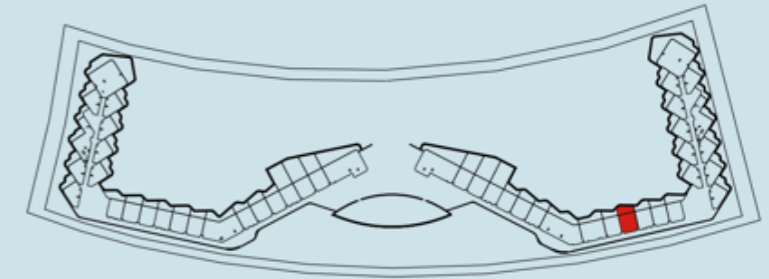
**DISCLAIMER:**

All measurements are indicative and are for marketing purposes only. All efforts have been made to ensure their accuracy, however these layouts are subject to change at the discretion of the developer and should not be relied upon as final. The actual area may vary from the stated area and the developer reserves the right to make the revisions/alterations, at its absolute discretion, without any liability whatsoever



# KEY PLAN

LEVEL-3



## 1BHK TYPE 2

Internal Living Area 717.52 sq.ft.

Outdoor Living Area 282.23 sq.ft.

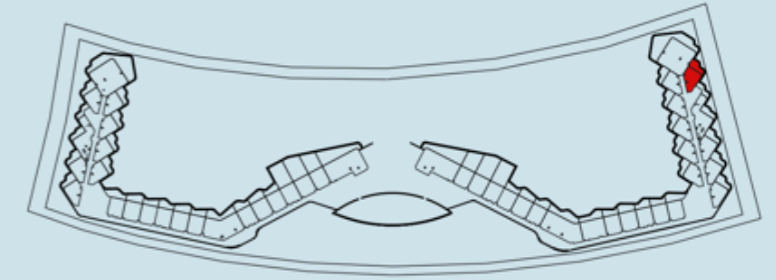
**Total Living Area 999.75 sq.ft.**

### DISCLAIMER:

All measurements are indicative and are for marketing purposes only. All efforts have been made to ensure their accuracy, however these layouts are subject to change at the discretion of the developer and should not be relied upon as final. The actual area may vary from the stated area and the developer reserves the right to make the revisions/alterations, at its absolute discretion, without any liability whatsoever

# KEY PLAN

LEVEL-3



## 1BHK TYPE 4

Internal Living Area 633.78 sq.ft.

Outdoor Living Area 254.03 sq.ft.

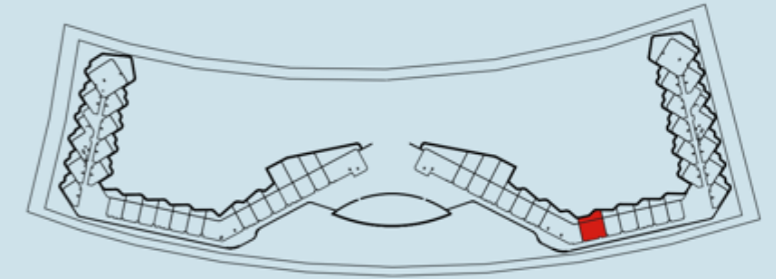
**Total Living Area 887.81 sq.ft.**

### DISCLAIMER:

All measurements are indicative and are for marketing purposes only. All efforts have been made to ensure their accuracy, however these layouts are subject to change at the discretion of the developer and should not be relied upon as final. The actual area may vary from the stated area and the developer reserves the right to make the revisions/alterations, at its absolute discretion, without any liability whatsoever

# KEY PLAN

LEVEL-3



## 2BHK TYPE 1

Internal Living Area 1028.17 sq.ft.

Outdoor Living Area 329.48 sq.ft.

**Total Living Area 1357.65 sq.ft.**

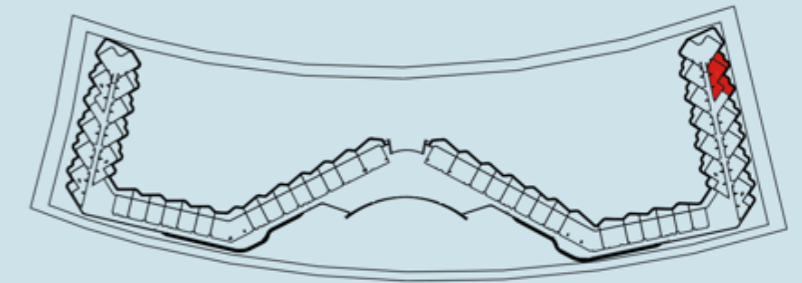
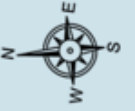
### DISCLAIMER:

All measurements are indicative and are for marketing purposes only. All efforts have been made to ensure their accuracy, however these layouts are subject to change at the discretion of the developer and should not be relied upon as final. The actual area may vary from the stated area and the developer reserves the right to make the revisions/alterations, at its absolute discretion, without any liability whatsoever



# KEY PLAN

LEVEL-4



## 2BHK TYPE 2

Internal Living Area 902.12 sq.ft.

Outdoor Living Area 572.10 sq.ft.

**Total Living Area 1474.23 sq.ft.**

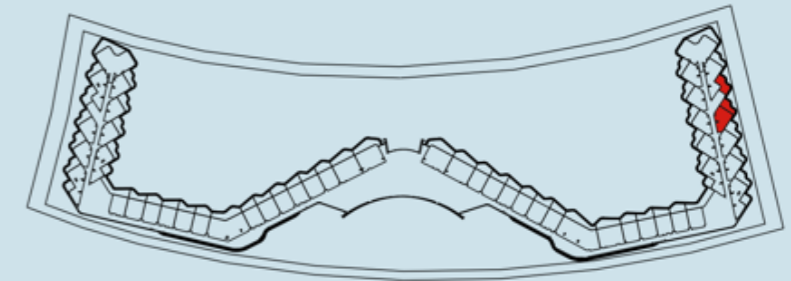
### DISCLAIMER:

All measurements are indicative and are for marketing purposes only. All efforts have been made to ensure their accuracy, however these layouts are subject to change at the discretion of the developer and should not be relied upon as final. The actual area may vary from the stated area and the developer reserves the right to make the revisions/alterations, at its absolute discretion, without any liability whatsoever



# KEY PLAN

LEVEL-3



## 2BHK TYPE 3

Internal Living Area 1099.64 sq.ft.

Outdoor Living Area 390.08 sq.ft.

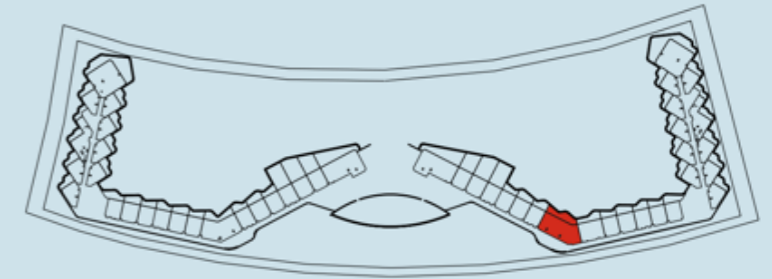
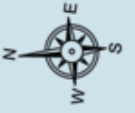
**Total Living Area 1489.73 sq.ft.**

**DISCLAIMER:**

All measurements are indicative and are for marketing purposes only. All efforts have been made to ensure their accuracy, however these layouts are subject to change at the discretion of the developer and should not be relied upon as final. The actual area may vary from the stated area and the developer reserves the right to make the revisions/alterations, at its absolute discretion, without any liability whatsoever

# KEY PLAN

LEVEL-3



## 3BHK TYPE 2

Internal Living Area 1777.44 sq.ft.

Outdoor Living Area 492.23 sq.ft.

**Total Living Area 2269.68 sq.ft.**

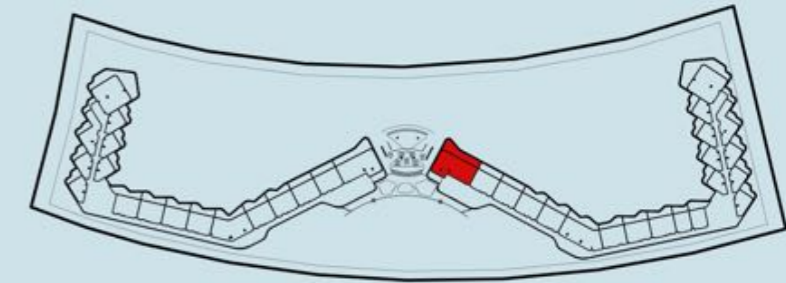
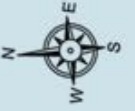
### DISCLAIMER:

All measurements are indicative and are for marketing purposes only. All efforts have been made to ensure their accuracy, however these layouts are subject to change at the discretion of the developer and should not be relied upon as final. The actual area may vary from the stated area and the developer reserves the right to make the revisions/alterations, at its absolute discretion, without any liability whatsoever



# KEY PLAN

LEVEL-15



## 3BHK TYPE 3

A-1520

Internal Living Area 1844.18 sq.ft.

Outdoor Living Area 709.02 sq.ft.

Total Living Area 2553.20 sq.ft.

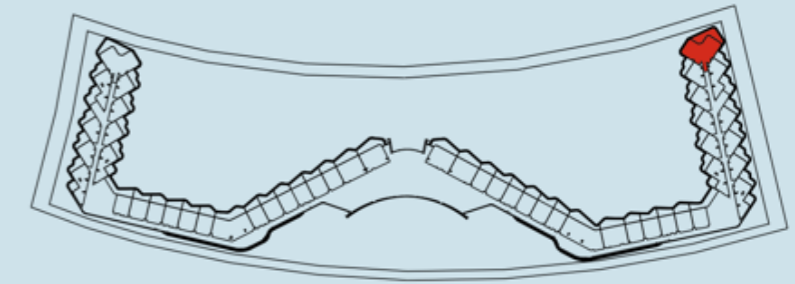


### DISCLAIMER:

All measurements are indicative and are for marketing purposes only. All efforts have been made to ensure their accuracy, however these layouts are subject to change at the discretion of the developer and should not be relied upon as final. The actual area may vary from the stated area and the developer reserves the right to make the revisions/alterations, at its absolute discretion, without any liability whatsoever

# KEY PLAN

LEVEL-4



## 3BHK TYPE 5

Internal Living Area 1555.28 sq.ft.

Outdoor Living Area 489.44 sq.ft.

**Total Living Area 2044.71 sq.ft.**

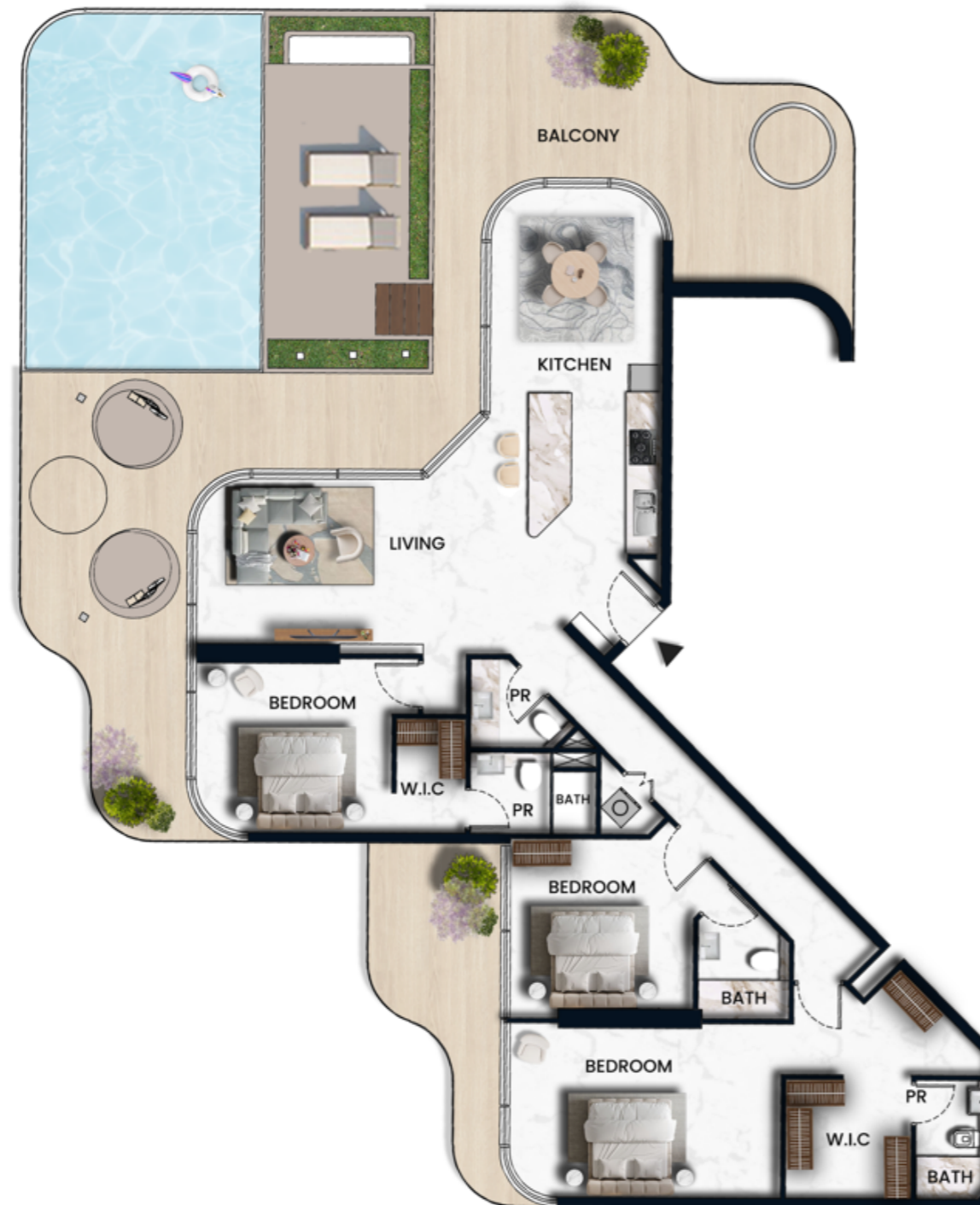
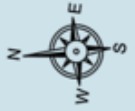
### DISCLAIMER:

All measurements are indicative and are for marketing purposes only. All efforts have been made to ensure their accuracy, however these layouts are subject to change at the discretion of the developer and should not be relied upon as final. The actual area may vary from the stated area and the developer reserves the right to make the revisions/alterations, at its absolute discretion, without any liability whatsoever



# KEY PLAN

LEVEL-16



## 3BHK TYPE 6

Internal Living Area 1746.44 sq.ft.

Outdoor Living Area 1730.73 sq.ft.

**Total Living Area 3477.17 sq.ft.**

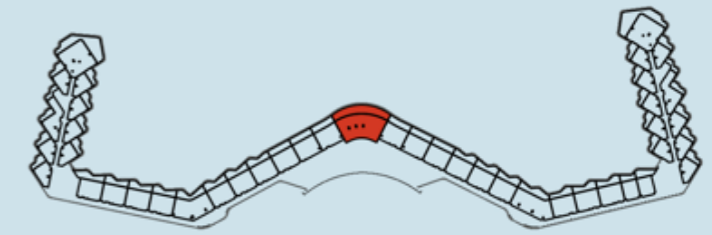
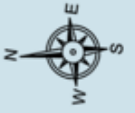
### DISCLAIMER:

All measurements are indicative and are for marketing purposes only. All efforts have been made to ensure their accuracy, however these layouts are subject to change at the discretion of the developer and should not be relied upon as final. The actual area may vary from the stated area and the developer reserves the right to make the revisions/alterations, at its absolute discretion, without any liability whatsoever



# KEY PLAN

LEVEL-9



## 4BHK TYPE 1

Internal Living Area 2386.25 sq.ft.

Outdoor Living Area 1103.84 sq.ft.

**Total Living Area 3490.09 sq.ft.**

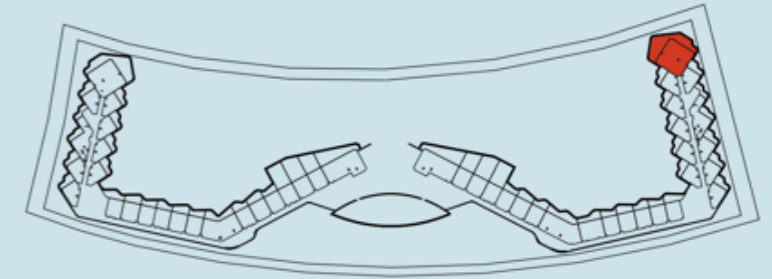
### DISCLAIMER:

All measurements are indicative and are for marketing purposes only. All efforts have been made to ensure their accuracy, however these layouts are subject to change at the discretion of the developer and should not be relied upon as final. The actual area may vary from the stated area and the developer reserves the right to make the revisions/alterations, at its absolute discretion, without any liability whatsoever



# KEY PLAN

LEVEL-3



## 4BHK TYPE 2

Internal Living Area 1884.55 sq.ft.

Outdoor Living Area 1233.76 sq.ft.

**Total Living Area 3118.30 sq.ft.**

### DISCLAIMER:

All measurements are indicative and are for marketing purposes only. All efforts have been made to ensure their accuracy, however these layouts are subject to change at the discretion of the developer and should not be relied upon as final. The actual area may vary from the stated area and the developer reserves the right to make the revisions/alterations, at its absolute discretion, without any liability whatsoever

# PAYMENT PLAN - 1

**%70 DURING CONSTRUCTION | %30 ON COMPLETION**

Installment	Payment Percentage	Date
Down Payment	10 %	On Booking
1st Installment	10 %	90 Days from Booking
2nd Installment	10 %	January 2025
3rd Installment	10 %	June 2025
4th Installment	10 %	December 2025
5th Installment	5 %	January 2026
6th Installment	5 %	April 2026
7th Installment	5 %	July 2026
8th Installment	5 %	October 2026
Final Installment	30 %	On Completion



# PAYMENT PLAN - 2

**%50 DOWN PAYMENT | %50 DURING CONSTRUCTION**

**%5 DISCOUNT**

Installment	Payment Percentage	Date
Down Payment 1	10 %	On Booking
Down Payment 2	40 %	60 Days from Booking
1st Installment	10 %	January 2025
2nd Installment	10 %	May 2025
3rd Installment	10 %	October 2025
4th Installment	5 %	January 2026
5th Installment	5 %	April 2026
6th Installment	5 %	August 2026
7th Installment	5 %	December 2026

# PAYMENT PLAN - 3

%100 UPFRONT PAYMENT

OPTION - 1	OPTION - 2
<b>%10</b> Discount	<b>%8</b> Guaranteed ROI for 2 Years

## PAYMENT METHOD



CHEQUE



BANK TRANSFER



DEBIT/CREDIT CARD



CASH



CRYPTO

## ACCOUNT DETAILS

Beneficiary Name: AARK DEVELOPERS FZ LLC  
Beneficiary Bank: National Bank of Ras Al Khaimah (P.S.C)  
IBAN: AE01 1130 3226 0033 4000 460  
Account No: 0333226113001  
Swift Code: NRAKAEAK  
Branch: Bur Dubai  
Address: RAK Building, Umm Hurair, Bur Dubai-Dubai

The logo for AARK Developers is centered on a background of light blue, wavy, flowing lines. The logo consists of a stylized golden 'A' icon on the left, followed by the word 'AARK' in a large, golden, serif font, and the word 'DEVELOPERS' in a smaller, golden, sans-serif font directly below it.

AARK  
DEVELOPERS