



**THE RITZ - CARLTON  
RESIDENCES**

DUBAI, BUSINESS BAY

# ONE-BEDROOM APARTMENT

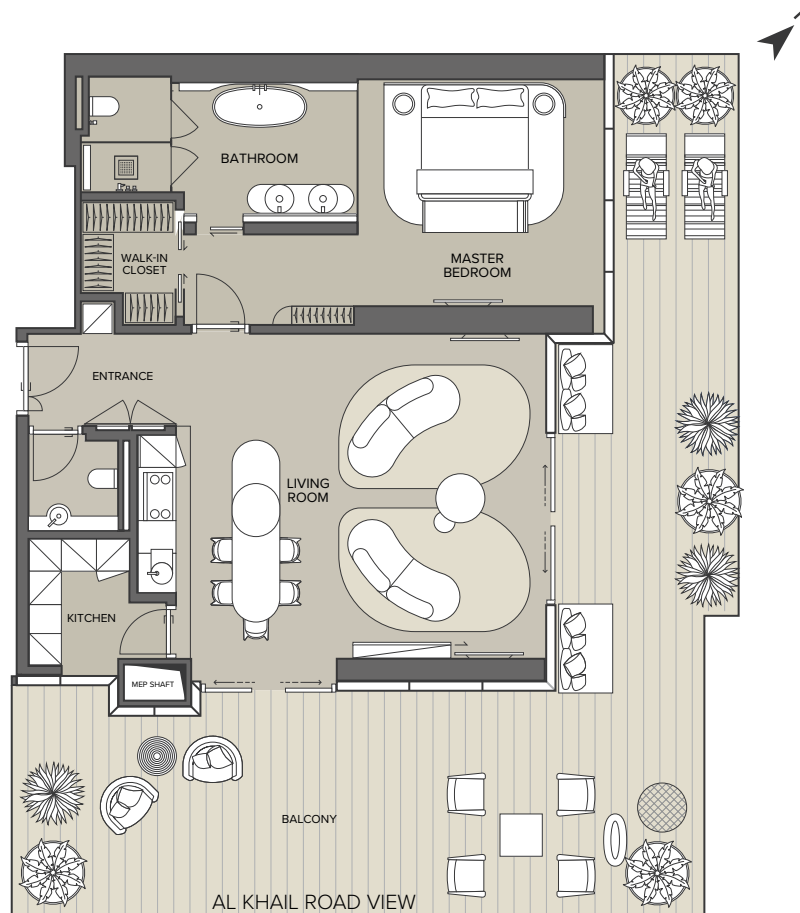
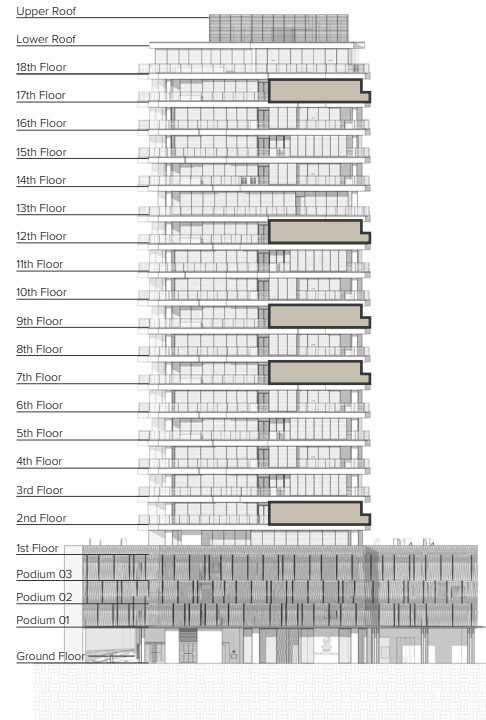


## THE RITZ-CARLTON RESIDENCES

DUBAI, BUSINESS BAY

South East Elevation

DUBAI WATER CANAL VIEW



Apartment Type: **T1A**

Unit Number: **202, 701, 901, 1201 & 1701**

Internal Area: **from 1,246 ft<sup>2</sup> (115.73 m<sup>2</sup>) to 1,286 ft<sup>2</sup> (119.51 m<sup>2</sup>)**

External Area: **from 922 ft<sup>2</sup> (85.61 m<sup>2</sup>) to 977 ft<sup>2</sup> (90.81 m<sup>2</sup>)**

Total Area: **from 2,194.64 ft<sup>2</sup> (203.88 m<sup>2</sup>) to 2,238 ft<sup>2</sup> (207.915 m<sup>2</sup>)**

View: **Dubai Water Canal and Al Khail Road**

Bedrooms: **1**

Internal Area    Terrace Area

All room sizes and floorplan measurements are approximate and may vary per unit. Floorplans and unit features are preliminary and proposed only. Developer reserves the right to modify, revise, change or withdraw any or all of same in its sole and absolute discretion and without prior notice. Depictions of furnishings, finishes, appliances, counters, soft fits, floor coverings and other matters of detail, including, without limitation, items of finish and decoration are conceptual only and are not necessarily included in each Unit. Consult your Agreement and the Prospectus for items included with your Unit.

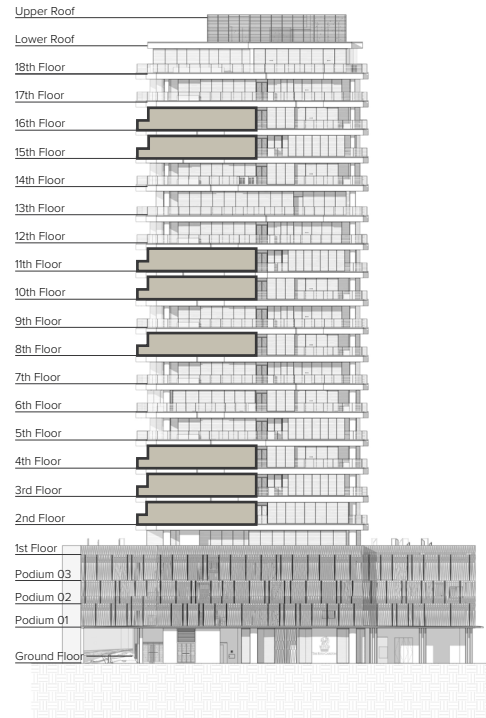
# ONE-BEDROOM APARTMENT



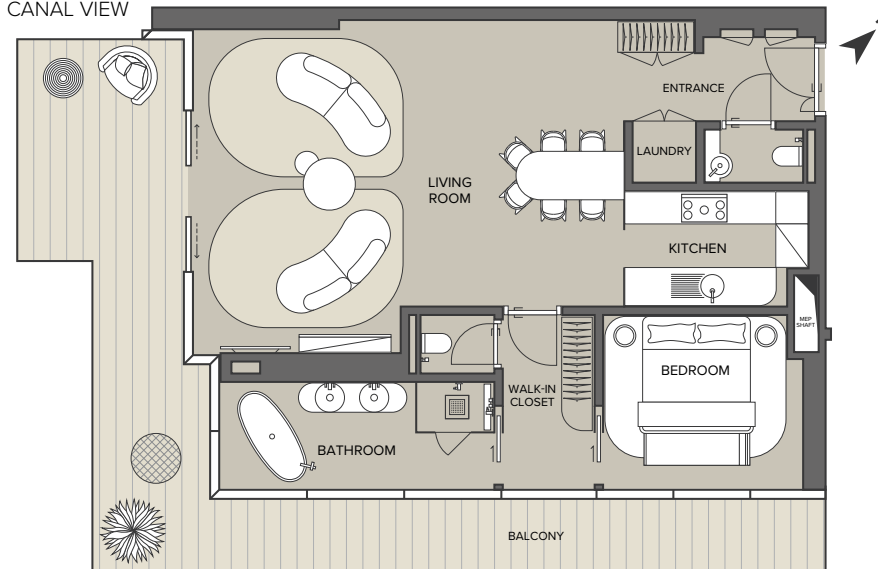
## THE RITZ-CARLTON RESIDENCES

DUBAI, BUSINESS BAY

South East Elevation



DUBAI WATER CANAL VIEW



AL KHAIL ROAD VIEW

Internal Area    Terrace Area

Apartment Type: **T1B**

Unit Number: **201, 301, 401, 801, 1001, 1101, 1501 & 1601**

Internal Area: **from 1,102 ft<sup>2</sup> (102.36 m<sup>2</sup>) to 1,112 ft<sup>2</sup> (103.30 m<sup>2</sup>)**

External Area: **from 328 ft<sup>2</sup> (30.48 m<sup>2</sup>) to 433 ft<sup>2</sup> (40.19m<sup>2</sup>)**

Total Area: **from 1,436.7 ft<sup>2</sup> (133.47 m<sup>2</sup>) to 1,542.51 ft<sup>2</sup> (143.30 m<sup>2</sup>)**

View: **Dubai Water Canal and Al Khail Road**

Bedrooms: **1**

All room sizes and floorplan measurements are approximate and may vary per unit. Floorplans and unit features are preliminary and proposed only. Developer reserves the right to modify, revise, change or withdraw any or all of same in its sole and absolute discretion and without prior notice. Depictions of furnishings, finishes, appliances, counters, soft fits, floor coverings and other matters of detail, including, without limitation, items of finish and decoration are conceptual only and are not necessarily included in each Unit. Consult your Agreement and the Prospectus for items included with your Unit.

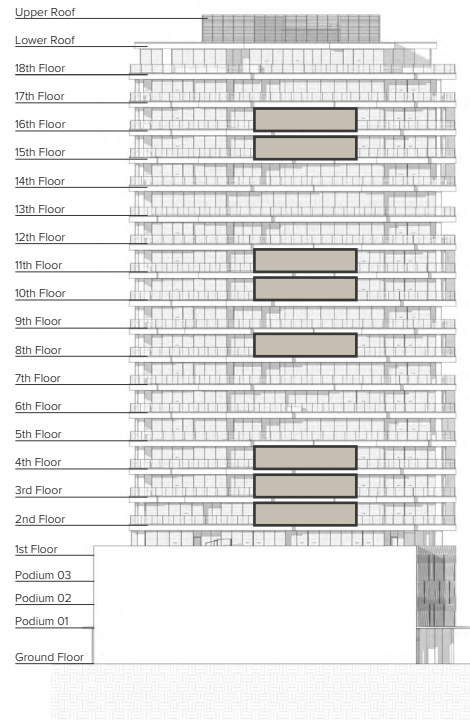
# TWO-BEDROOM APARTMENT



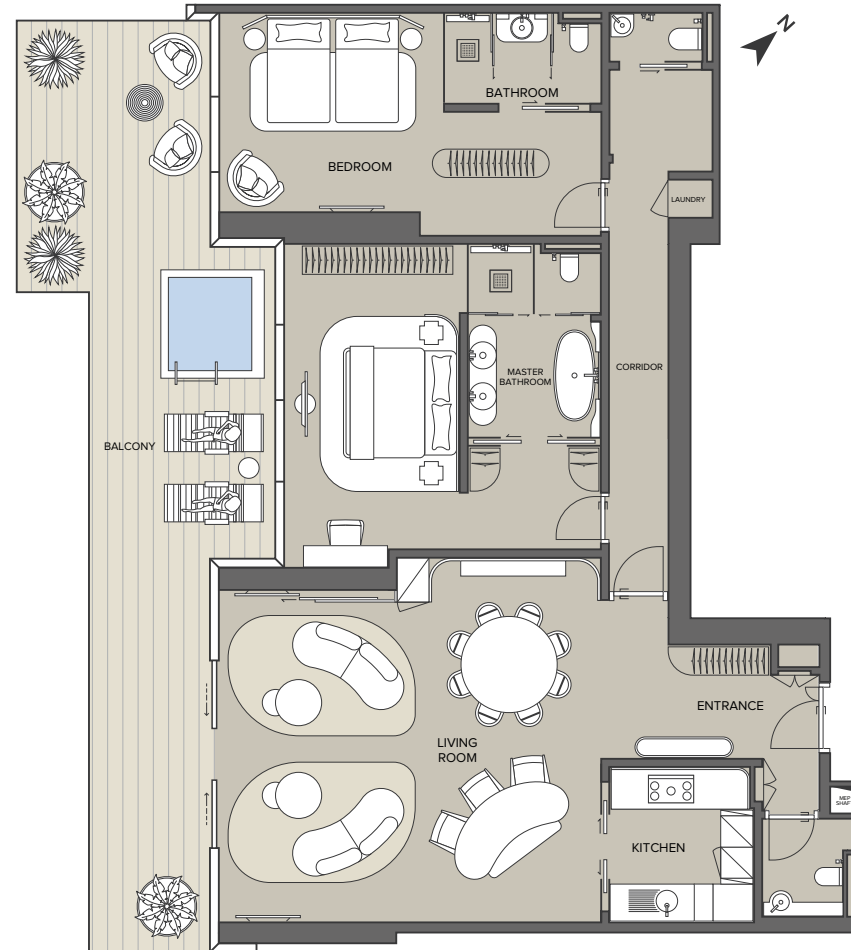
## THE RITZ-CARLTON RESIDENCES

DUBAI, BUSINESS BAY

South West Elevation



DUBAI WATER CANAL VIEW



AL KHAIL ROAD VIEW

Pool Area
  Internal Area
  Terrace Area

Apartment Type: **T2B**

Unit Number: **203, 303, 403, 803, 1003, 1103, 1503 & 1603**

Internal Area: **from 1,871.33 ft<sup>2</sup> (173.85 m<sup>2</sup>) to 1,900 ft<sup>2</sup> (176.51 m<sup>2</sup>)**

External Area: **from 549.41 ft<sup>2</sup> (51.04 m<sup>2</sup>) to 621.40 ft<sup>2</sup> (57.73 m<sup>2</sup>)**

Total Area: **from 2,372.36 ft<sup>2</sup> (220.4 m<sup>2</sup>) to 2,502.38 ft<sup>2</sup> (232.48 m<sup>2</sup>)**

View: **Dubai Water Canal and Al Khail Road**

Bedrooms: **2**

All room sizes and floorplan measurements are approximate and may vary per unit. Floorplans and unit features are preliminary and proposed only. Developer reserves the right to modify, revise, change or withdraw any or all of same in its sole and absolute discretion and without prior notice. Depictions of furnishings, finishes, appliances, counters, soft fits, floor coverings and other matters of detail, including, without limitation, items of finish and decoration are conceptual only and are not necessarily included in each Unit. Consult your Agreement and the Prospectus for items included with your Unit.

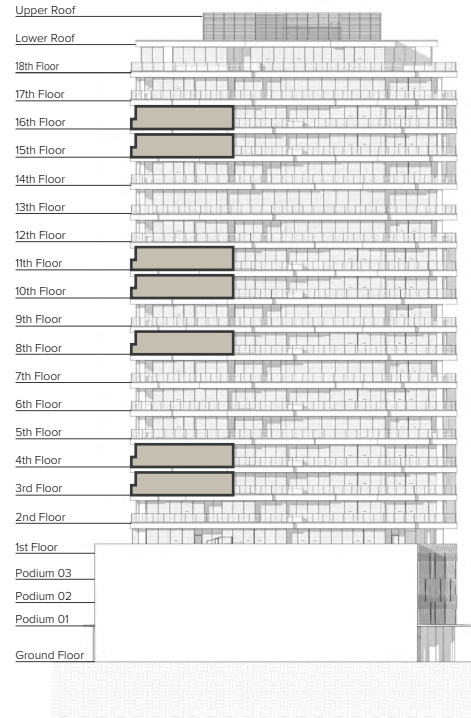
# TWO-BEDROOM APARTMENT



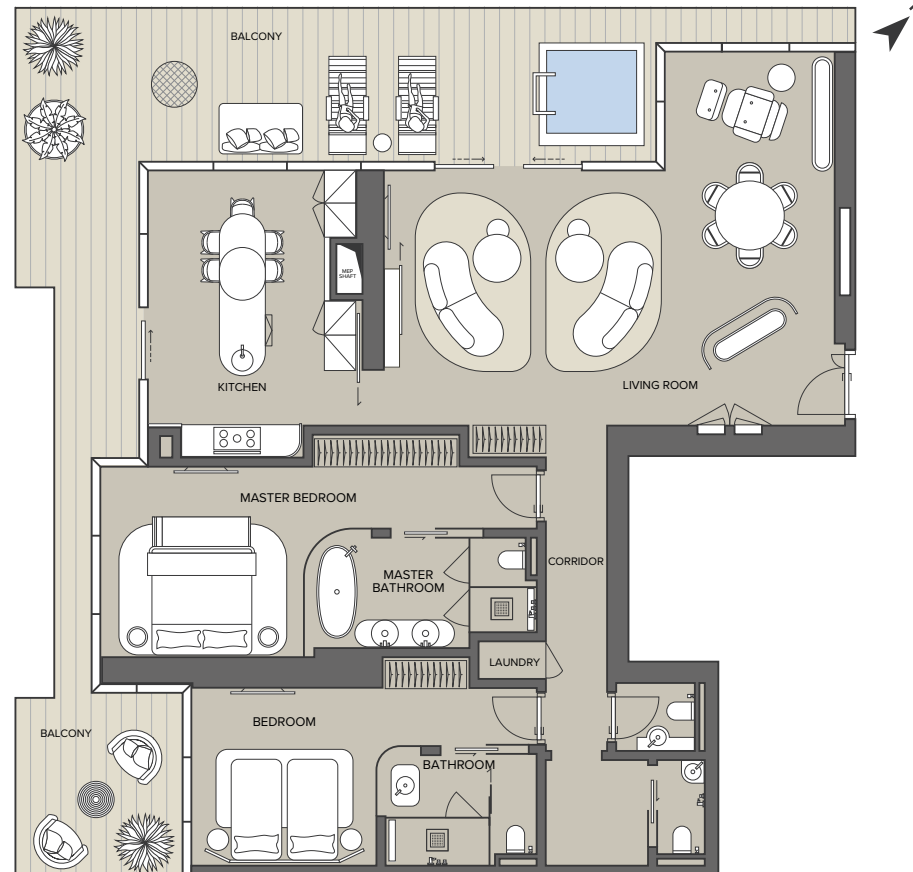
**THE RITZ-CARLTON  
RESIDENCES**

DUBAI, BUSINESS BAY

South West Elevation



DUBAI WATER CANAL VIEW



Apartment Type: **T2C**

Unit Number: **305, 405, 805, 1005,  
1105, 1505 & 1605**

Internal Area: **1,806.09 ft<sup>2</sup> (167.79 m<sup>2</sup>)  
to 1,834.30 ft<sup>2</sup> (170.41 m<sup>2</sup>)**

External Area: **from 713.77 ft<sup>2</sup>  
(66.31 m<sup>2</sup>) to 757.76 ft<sup>2</sup> (70.40 m<sup>2</sup>)**

Total Area: **from 2,534.83 ft<sup>2</sup>  
(235.49 m<sup>2</sup>) to 2,565.70 ft<sup>2</sup>  
(238.36 m<sup>2</sup>)**

View: **Dubai Water Canal**

Bedrooms: **2**

Pool Area Internal Area Terrace Area

All room sizes and floorplan measurements are approximate and may vary per unit. Floorplans and unit features are preliminary and proposed only. Developer reserves the right to modify, revise, change or withdraw any or all of same in its sole and absolute discretion and without prior notice. Depictions of furnishings, finishes, appliances, counters, soft fits, floor coverings and other matters of detail, including, without limitation, items of finish and decoration are conceptual only and are not necessarily included in each Unit. Consult your Agreement and the Prospectus for items included with your Unit.

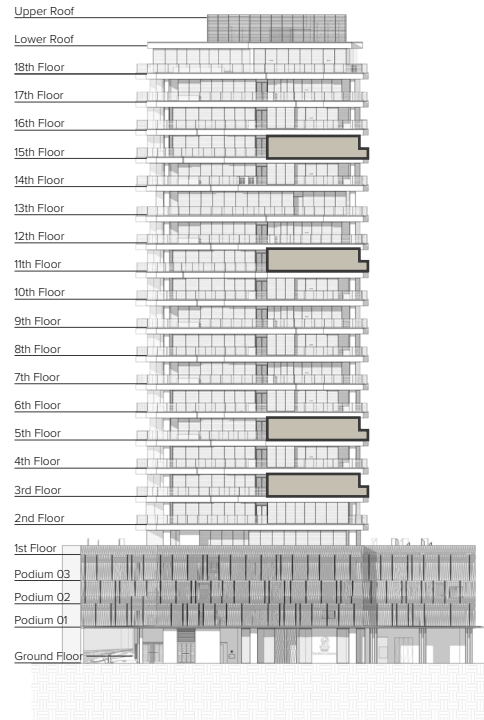
# TWO-BEDROOM APARTMENT



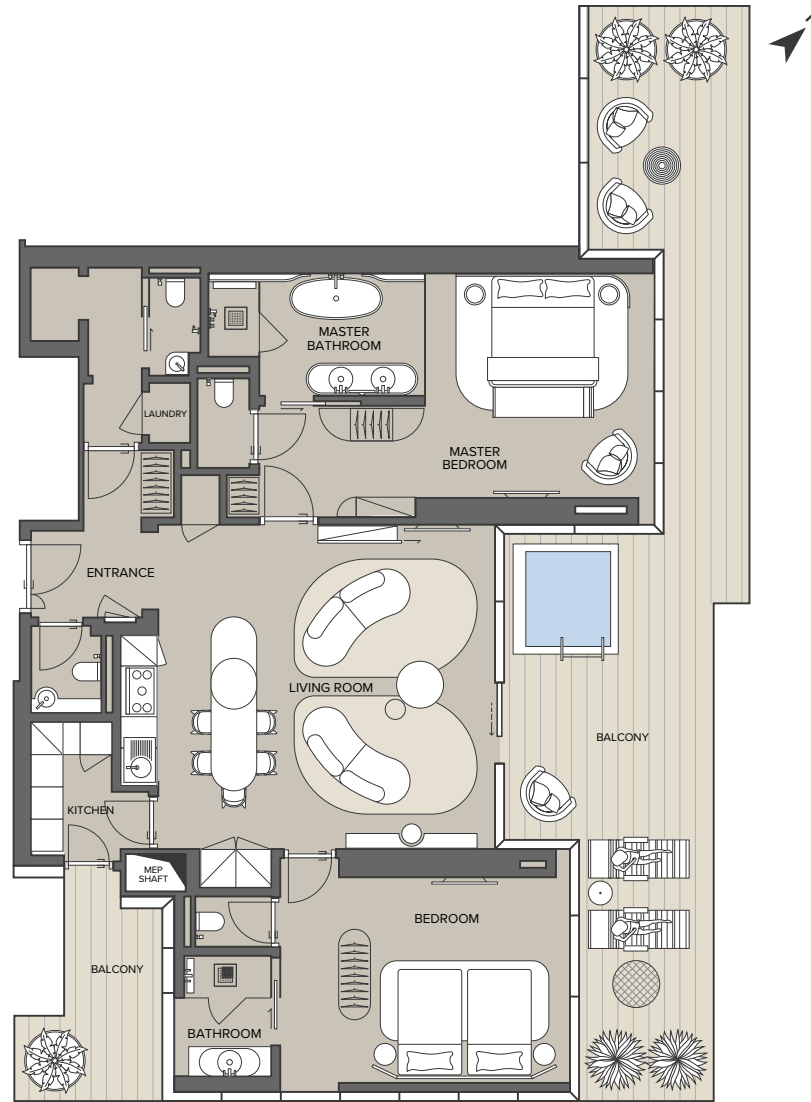
## THE RITZ-CARLTON RESIDENCES

DUBAI, BUSINESS BAY

South East Elevation



DUBAI WATER CANAL VIEW



AL KHAIL ROAD VIEW

Pool Area Internal Area Terrace Area

Apartment Type: **T2D**

Unit Number: **302, 501, 1102 & 1502**

Internal Area: **from 1,574.23 ft<sup>2</sup> (146.25 m<sup>2</sup>) to 1,596.85 ft<sup>2</sup> (148.35 m<sup>2</sup>)**

External Area: **from 610.68 ft<sup>2</sup> (56.73 m<sup>2</sup>) to 771.54 ft<sup>2</sup> (71.68 m<sup>2</sup>)**

Total Area: **from 2,191.68 ft<sup>2</sup> (203.61 m<sup>2</sup>) to 2,356.70 ft<sup>2</sup> (218.94 m<sup>2</sup>)**

View: **Dubai Water Canal and Al Khail Road**

Bedrooms: **2**

All room sizes and floorplan measurements are approximate and may vary per unit. Floorplans and unit features are preliminary and proposed only. Developer reserves the right to modify, revise, change or withdraw any or all of same in its sole and absolute discretion and without prior notice. Depictions of furnishings, finishes, appliances, counters, soft fits, floor coverings and other matters of detail, including, without limitation, items of finish and decoration are conceptual only and are not necessarily included in each Unit. Consult your Agreement and the Prospectus for items included with your Unit.

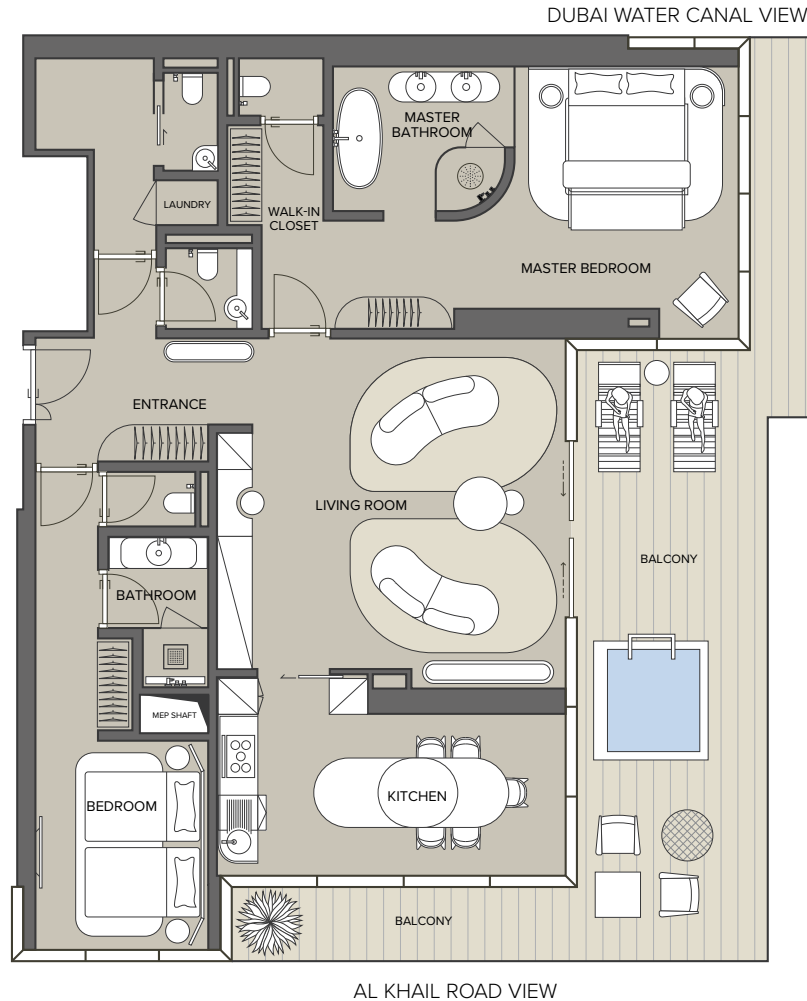
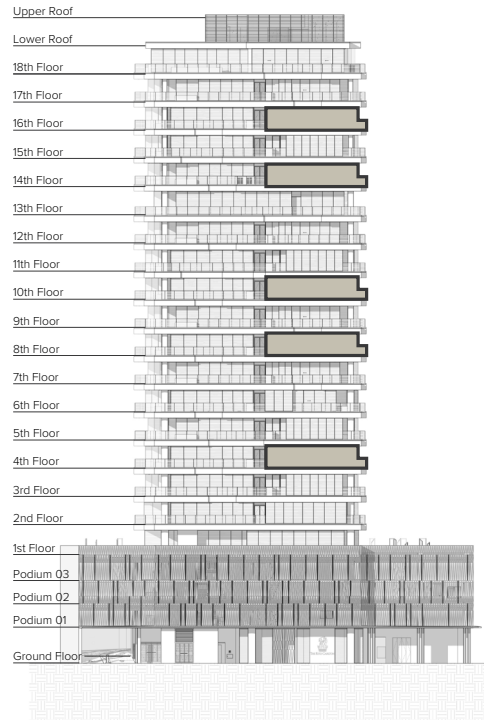
# TWO-BEDROOM APARTMENT



## THE RITZ-CARLTON RESIDENCES

DUBAI, BUSINESS BAY

South East Elevation



Apartment Type: **T2A**

Unit Number: **402, 802, 1002, 1401 & 1602**

Internal Area: **from 1,657.81 ft<sup>2</sup> (154.01 m<sup>2</sup>) to 1,680.69 ft<sup>2</sup> (156.17 m<sup>2</sup>)**

External Area: **from 542.05 ft<sup>2</sup> (50.36 m<sup>2</sup>) to 716.63 ft<sup>2</sup> (66.58 m<sup>2</sup>)**

Total Area: **from 2,199.86 ft<sup>2</sup> (204.37 m<sup>2</sup>) to 2,397.59 ft<sup>2</sup> (222.74 m<sup>2</sup>)**

View: **Dubai Water Canal and Al Khail Road**

Bedrooms: **2**

Pool Area Internal Area Terrace Area

All room sizes and floorplan measurements are approximate and may vary per unit. Floorplans and unit features are preliminary and proposed only. Developer reserves the right to modify, revise, change or withdraw any or all of same in its sole and absolute discretion and without prior notice. Depictions of furnishings, finishes, appliances, counters, soft fits, floor coverings and other matters of detail, including, without limitation, items of finish and decoration are conceptual only and are not necessarily included in each Unit. Consult your Agreement and the Prospectus for items included with your Unit.

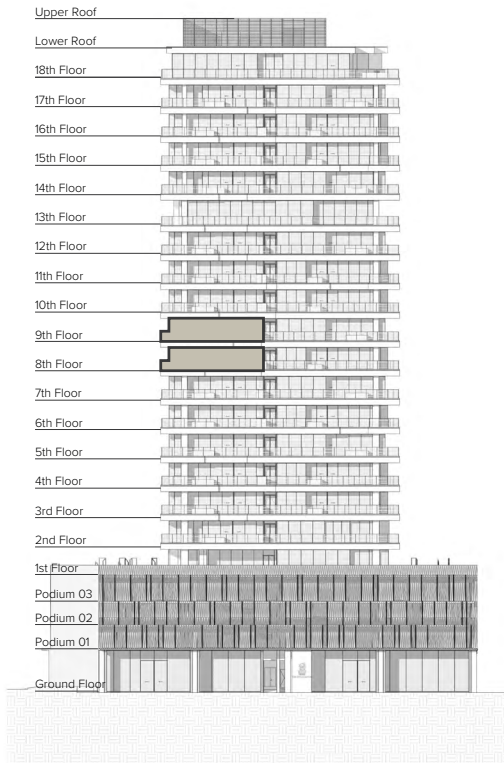
# TWO-BEDROOM APARTMENT



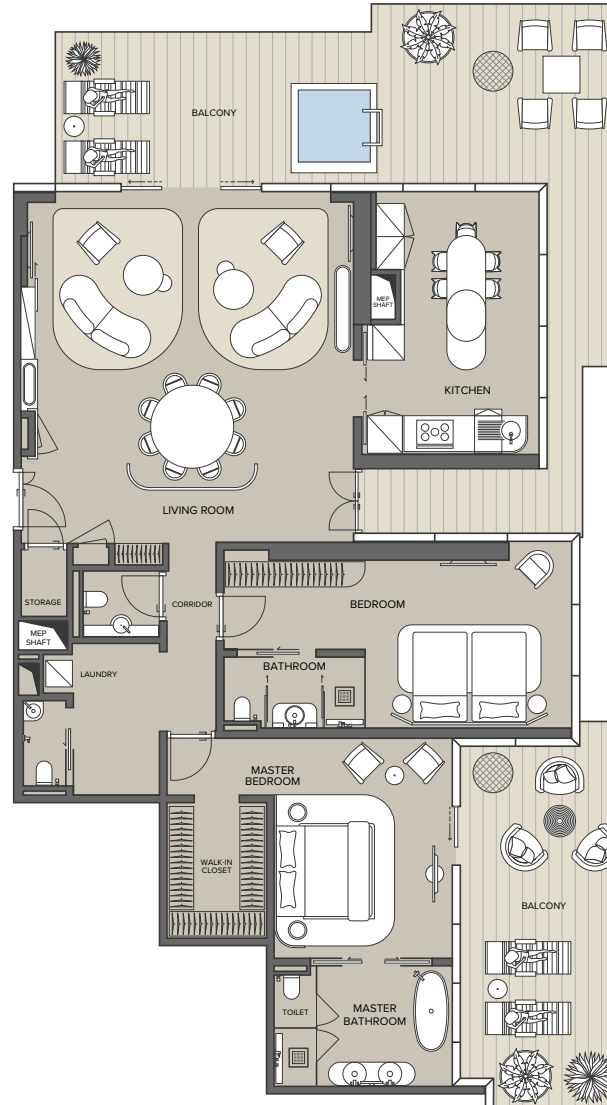
## THE RITZ-CARLTON RESIDENCES

DUBAI, BUSINESS BAY

North West Elevation



DUBAI WATER CANAL VIEW



Pool Area
  Internal Area
  Terrace Area

Apartment Type: **T2E**

Unit Number: **804 & 903**

Internal Area: **from 2,044.62 ft<sup>2</sup> (189.86 m<sup>2</sup>) to 2,044.72 ft<sup>2</sup> (189.96 m<sup>2</sup>)**

External Area: **from 1,029.38 ft<sup>2</sup> (95.63 m<sup>2</sup>) to 1,231.17 ft<sup>2</sup> (114.38 m<sup>2</sup>)**

Total Area: **from 3,073 ft<sup>2</sup> (285.49 m<sup>2</sup>) to 3,275.89 ft<sup>2</sup> (304.34 m<sup>2</sup>)**

View: **Dubai Water Canal**

Bedrooms: **2**

All room sizes and floorplan measurements are approximate and may vary per unit. Floorplans and unit features are preliminary and proposed only. Developer reserves the right to modify, revise, change or withdraw any or all of same in its sole and absolute discretion and without prior notice. Depictions of furnishings, finishes, appliances, counters, soft fits, floor coverings and other matters of detail, including, without limitation, items of finish and decoration are conceptual only and are not necessarily included in each Unit. Consult your Agreement and the Prospectus for items included with your Unit.



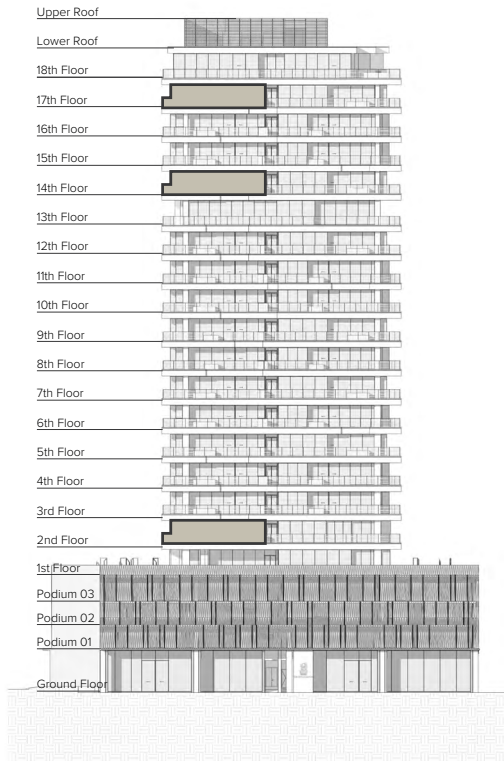
# THREE-BEDROOM APARTMENT



## THE RITZ-CARLTON RESIDENCES

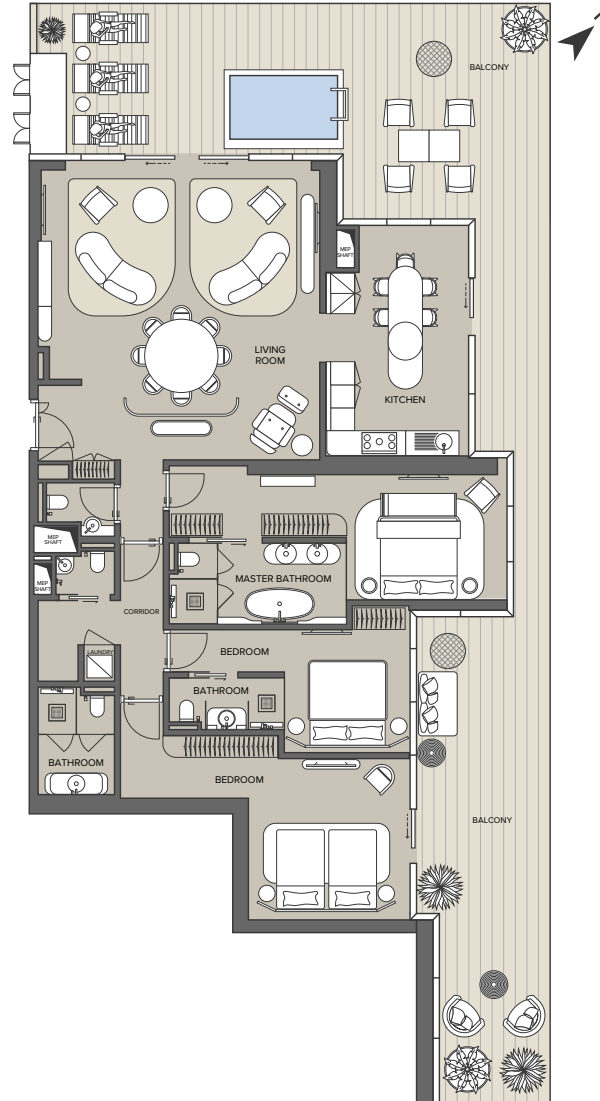
DUBAI, BUSINESS BAY

North West Elevation



Pool Area
  Internal Area
  Terrace Area

DUBAI WATER CANAL VIEW



Apartment Type: **T3B2**

Unit Number: **204, 1403 & 1703**

Internal Area: **from 2,134.94 ft<sup>2</sup> (198.34 m<sup>2</sup>) to 2,165.33 ft<sup>2</sup> (201.16 m<sup>2</sup>)**

External Area: **from 1,083 ft<sup>2</sup> (100.62 m<sup>2</sup>) to 1,332.33 ft<sup>2</sup> (123.78 m<sup>2</sup>)**

Total Area: **from 3,246.39 ft<sup>2</sup> (301.60 m<sup>2</sup>) to 3,467.27 ft<sup>2</sup> (322.12 m<sup>2</sup>)**

View: **Dubai Water Canal**

Bedrooms: **3**

All room sizes and floorplan measurements are approximate and may vary per unit. Floorplans and unit features are preliminary and proposed only. Developer reserves the right to modify, revise, change or withdraw any or all of same in its sole and absolute discretion and without prior notice. Depictions of furnishings, finishes, appliances, counters, soft fits, floor coverings and other matters of detail, including, without limitation, items of finish and decoration are conceptual only and are not necessarily included in each Unit. Consult your Agreement and the Prospectus for items included with your Unit.

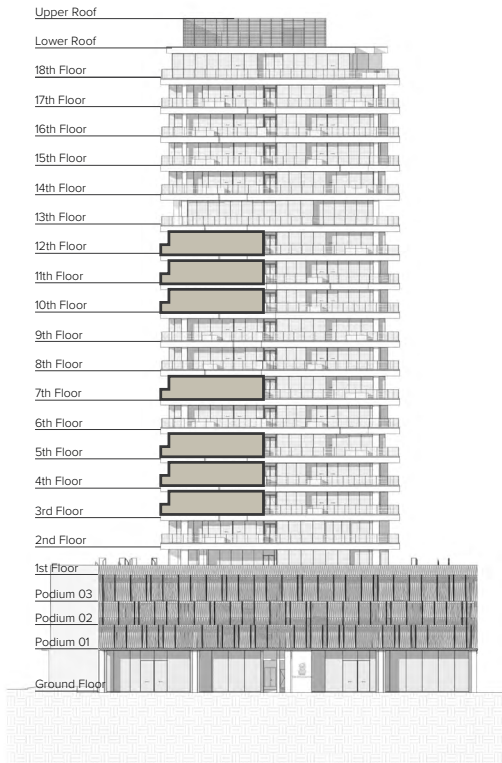
# THREE-BEDROOM APARTMENT



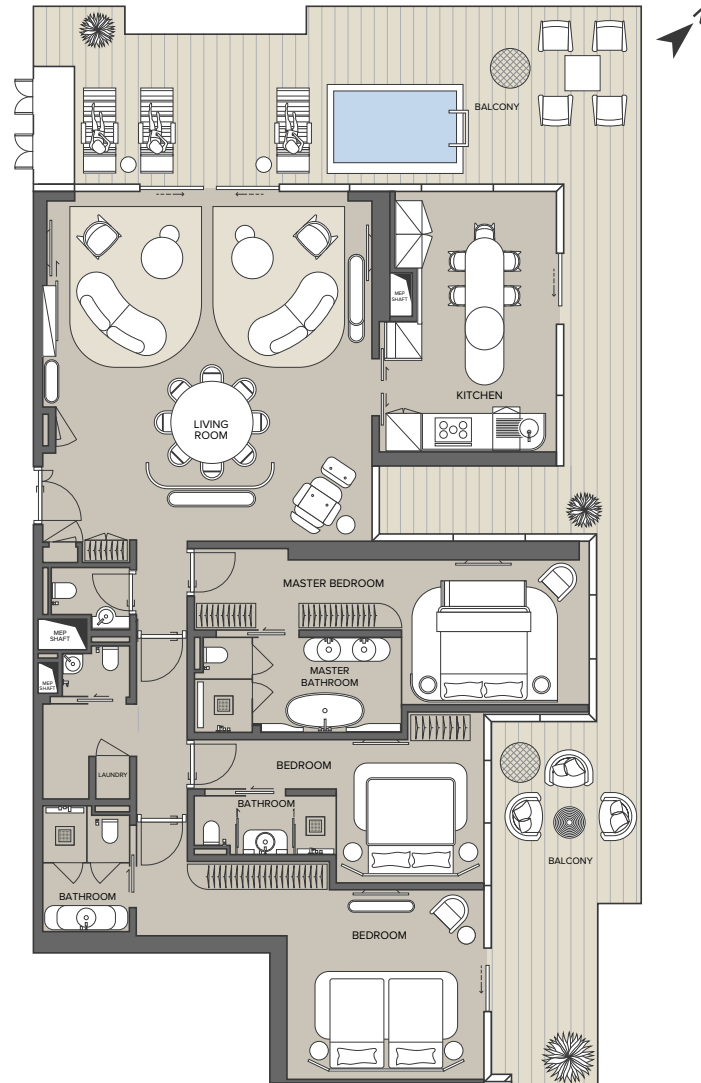
## THE RITZ-CARLTON RESIDENCES

DUBAI, BUSINESS BAY

North West Elevation



DUBAI WATER CANAL VIEW



Pool Area
  Internal Area
  Terrace Area

Apartment Type: **T3B1**

Unit Number: **304, 404, 503, 703, 1004, 1104, 1203, 1504 & 1604**

Internal Area: **from 2,148 ft<sup>2</sup> (199.55 m<sup>2</sup>) to 2,189.03 ft<sup>2</sup> (203.37m<sup>2</sup>)**

External Area: **from 1,026 ft<sup>2</sup> (95.35 m<sup>2</sup>) to 1,271 ft<sup>2</sup> (118.08 m<sup>2</sup>)**

Total Area: **from 3,184.68 ft<sup>2</sup> (295.86 m<sup>2</sup>) to 3,434.81 ft<sup>2</sup> (319.10 m<sup>2</sup>)**

View: **Dubai Water Canal**

Bedrooms: **3**

All room sizes and floorplan measurements are approximate and may vary per unit. Floorplans and unit features are preliminary and proposed only. Developer reserves the right to modify, revise, change or withdraw any or all of same in its sole and absolute discretion and without prior notice. Depictions of furnishings, finishes, appliances, counters, soft fits, floor coverings and other matters of detail, including, without limitation, items of finish and decoration are conceptual only and are not necessarily included in each Unit. Consult your Agreement and the Prospectus for items included with your Unit.

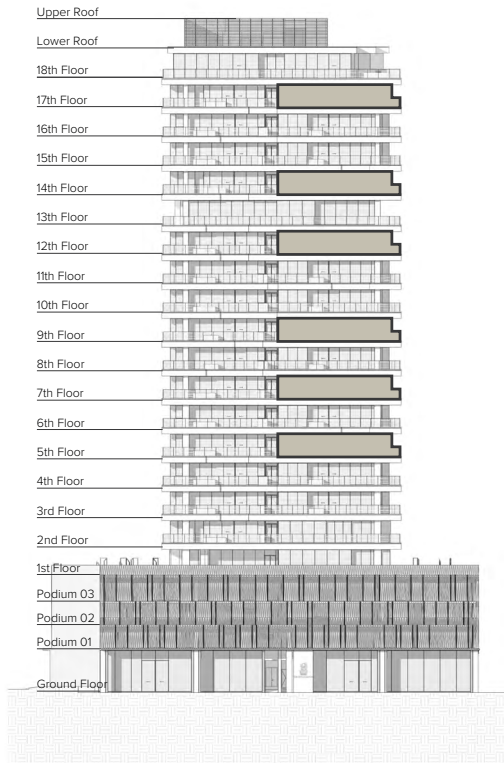
# THREE-BEDROOM APARTMENT



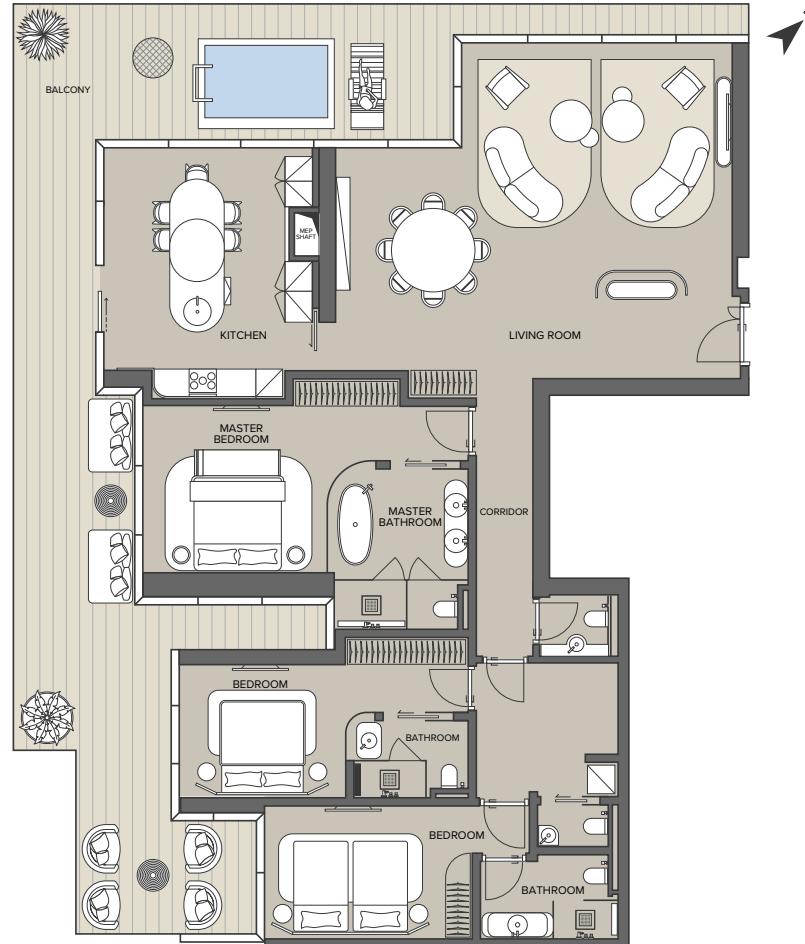
## THE RITZ-CARLTON RESIDENCES

DUBAI, BUSINESS BAY

North West Elevation



DUBAI WATER CANAL VIEW



Apartment Type: **T3A**

Unit Number: **504, 704, 904, 1204, 1404 & 1704**

Internal Area: **from 2,169 ft<sup>2</sup> (201.49 m<sup>2</sup>) to 2,198 ft<sup>2</sup> (204.21 m<sup>2</sup>)**

External Area: **from 905 ft<sup>2</sup> (84.06 m<sup>2</sup>) to 961 ft<sup>2</sup> (89.28 m<sup>2</sup>)**

Total Area: **from 3,086.38 ft<sup>2</sup> (286.73 m<sup>2</sup>) to 3,153.58 ft<sup>2</sup> (292.97 m<sup>2</sup>)**

View: **Dubai Water Canal**

Bedrooms: **3**

Pool Area Internal Area Terrace Area

All room sizes and floorplan measurements are approximate and may vary per unit. Floorplans and unit features are preliminary and proposed only. Developer reserves the right to modify, revise, change or withdraw any or all of same in its sole and absolute discretion and without prior notice. Depictions of furnishings, finishes, appliances, counters, soft fits, floor coverings and other matters of detail, including, without limitation, items of finish and decoration are conceptual only and are not necessarily included in each Unit. Consult your Agreement and the Prospectus for items included with your Unit.

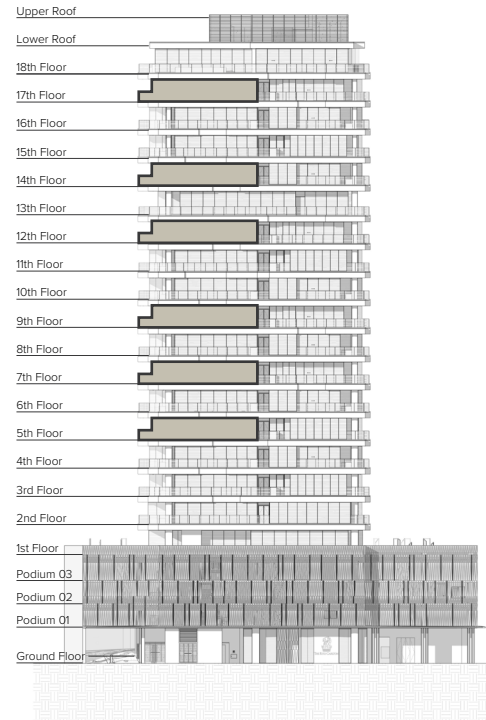
# THREE-BEDROOM APARTMENT



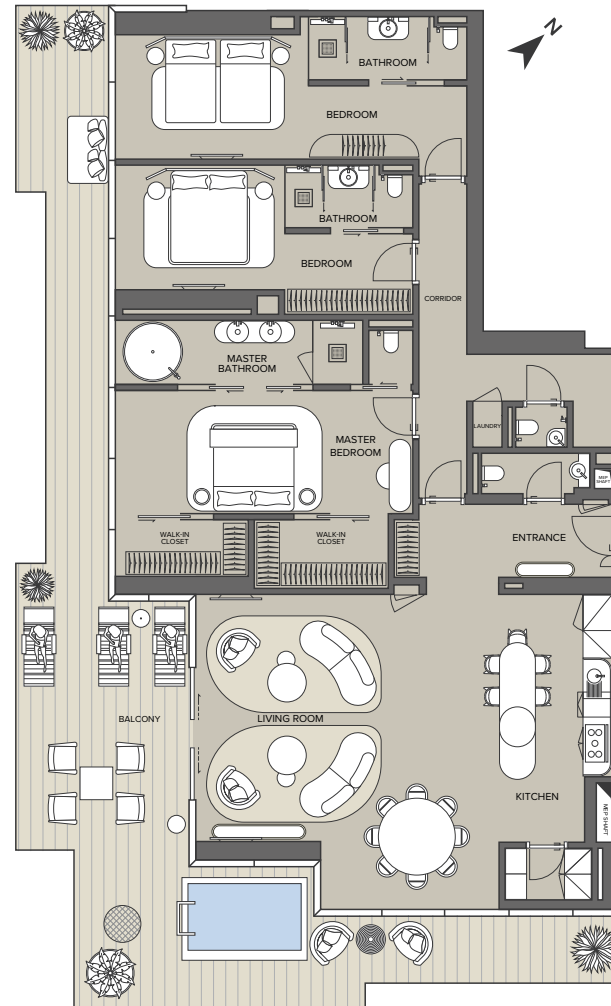
## THE RITZ-CARLTON RESIDENCES

DUBAI, BUSINESS BAY

South East Elevation



DUBAI WATER CANAL VIEW



AL KHAIL ROAD VIEW

Pool Area
  Internal Area
  Terrace Area

Apartment Type: **T3C1**

Unit Number: **502, 702, 902, 1202, 1402 & 1702**

Internal Area: **from 2,382 ft<sup>2</sup> (221.31 m<sup>2</sup>) to 2,412 ft<sup>2</sup> (224.11 m<sup>2</sup>)**

External Area: **from 894 ft<sup>2</sup> (83.05 m<sup>2</sup>) to 995 ft<sup>2</sup> (92.48 m<sup>2</sup>)**

Total Area: **from 3,306.36 ft<sup>2</sup> (307.17 m<sup>2</sup>) to 3,405.46 ft<sup>2</sup> (316.38 m<sup>2</sup>)**

View: **Dubai Water Canal and Al Khail Road**

Bedrooms: **3**

All room sizes and floorplan measurements are approximate and may vary per unit. Floorplans and unit features are preliminary and proposed only. Developer reserves the right to modify, revise, change or withdraw any or all of same in its sole and absolute discretion and without prior notice. Depictions of furnishings, finishes, appliances, counters, soft fits, floor coverings and other matters of detail, including, without limitation, items of finish and decoration are conceptual only and are not necessarily included in each Unit. Consult your Agreement and the Prospectus for items included with your Unit.

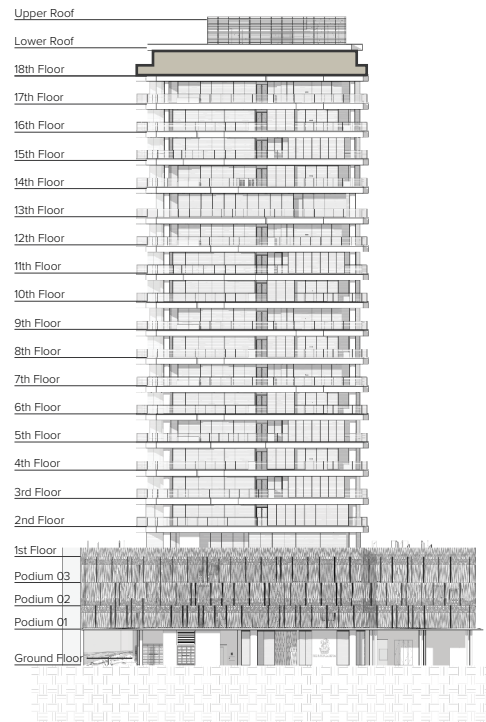
# PENTHOUSE 1



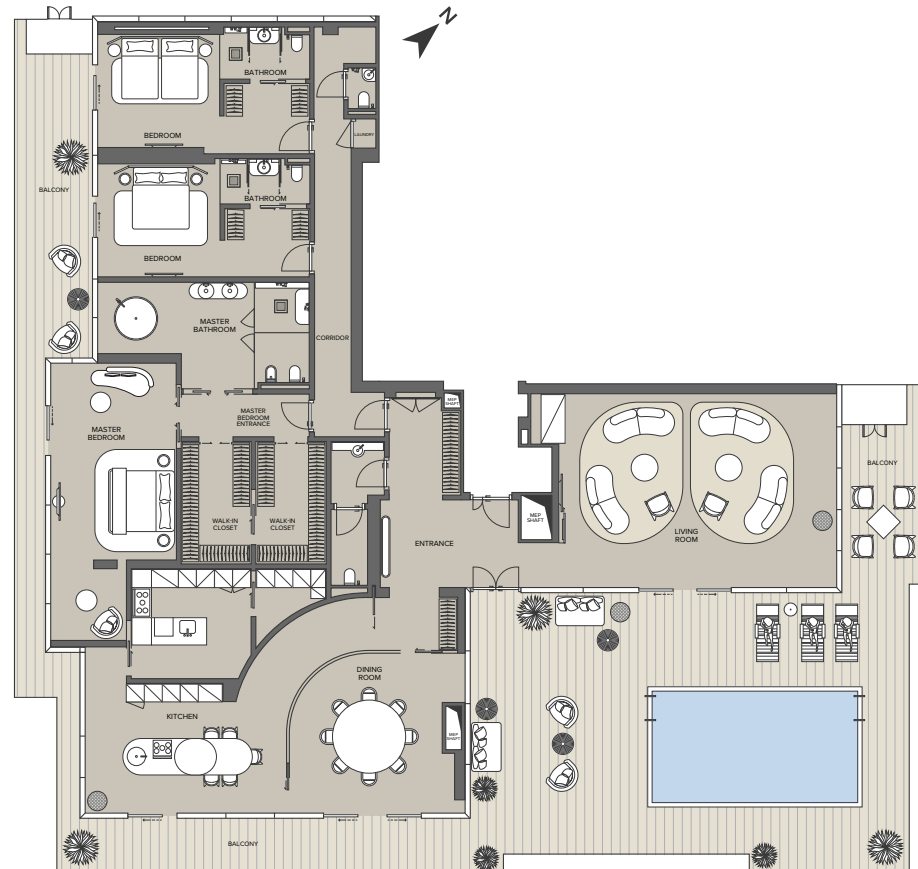
## THE RITZ-CARLTON RESIDENCES

DUBAI, BUSINESS BAY

South East Elevation



DUBAI WATER CANAL VIEW



AL KHAIL ROAD VIEW

Pool Area
  Internal Area
  Terrace Area

Apartment Type: **PEN-01**

Unit Number: **1801**

Internal Area: **4,072 ft<sup>2</sup> (378.32 m<sup>2</sup>)**

External Area: **2,315 ft<sup>2</sup> (215.07 m<sup>2</sup>)**

Total Area: **6387 ft<sup>2</sup> (593.39 m<sup>2</sup>)**

View: **Dubai Water Canal**

Bedrooms: **3**

All room sizes and floorplan measurements are approximate and may vary per unit. Floorplans and unit features are preliminary and proposed only. Developer reserves the right to modify, revise, change or withdraw any or all of same in its sole and absolute discretion and without prior notice. Depictions of furnishings, finishes, appliances, counters, soft fits, floor coverings and other matters of detail, including, without limitation, items of finish and decoration are conceptual only and are not necessarily included in each Unit. Consult your Agreement and the Prospectus for items included with your Unit.

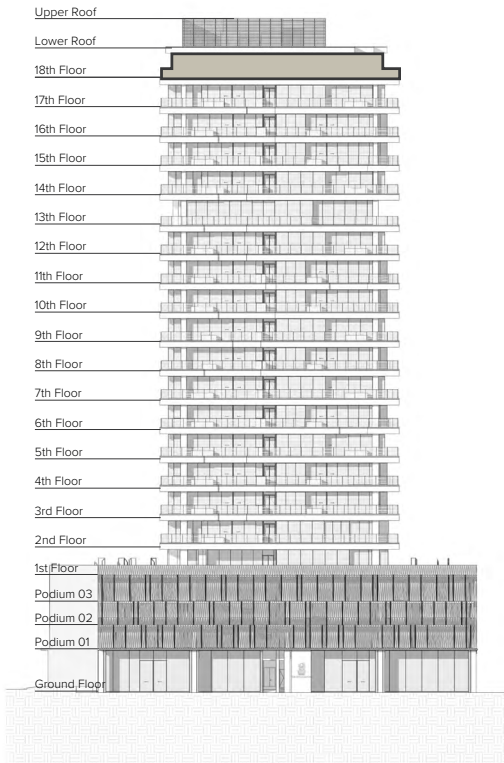
# PENTHOUSE 2



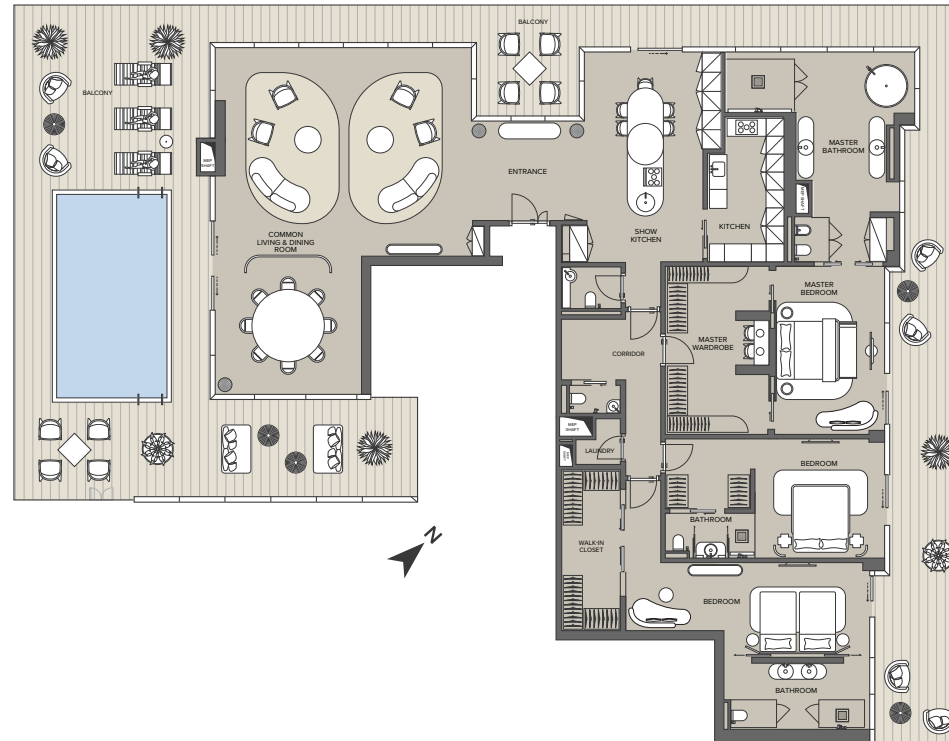
## THE RITZ-CARLTON RESIDENCES

DUBAI, BUSINESS BAY

North West Elevation



DUBAI WATER CANAL VIEW



AL KHAIL ROAD VIEW

Pool Area
  Internal Area
  Terrace Area

Apartment Type: **PEN-02**

Unit Number: **1802**

Internal Area: **3,656 ft<sup>2</sup> (339.61 m<sup>2</sup>)**

External Area: **2,467 ft<sup>2</sup> (229.1 m<sup>2</sup>)**

Total Area: **6,123 ft<sup>2</sup> (568.77 m<sup>2</sup>)**

View: **Dubai Water Canal  
and Al Khail Road**

Bedrooms: **3**

All room sizes and floorplan measurements are approximate and may vary per unit. Floorplans and unit features are preliminary and proposed only. Developer reserves the right to modify, revise, change or withdraw any or all of same in its sole and absolute discretion and without prior notice. Depictions of furnishings, finishes, appliances, counters, soft fits, floor coverings and other matters of detail, including, without limitation, items of finish and decoration are conceptual only and are not necessarily included in each Unit. Consult your Agreement and the Prospectus for items included with your Unit.

# VILLA

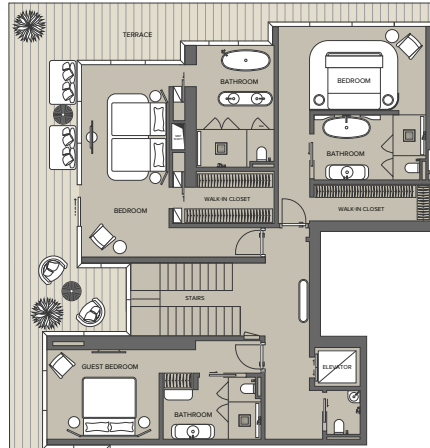


## THE RITZ-CARLTON RESIDENCES

DUBAI, BUSINESS BAY

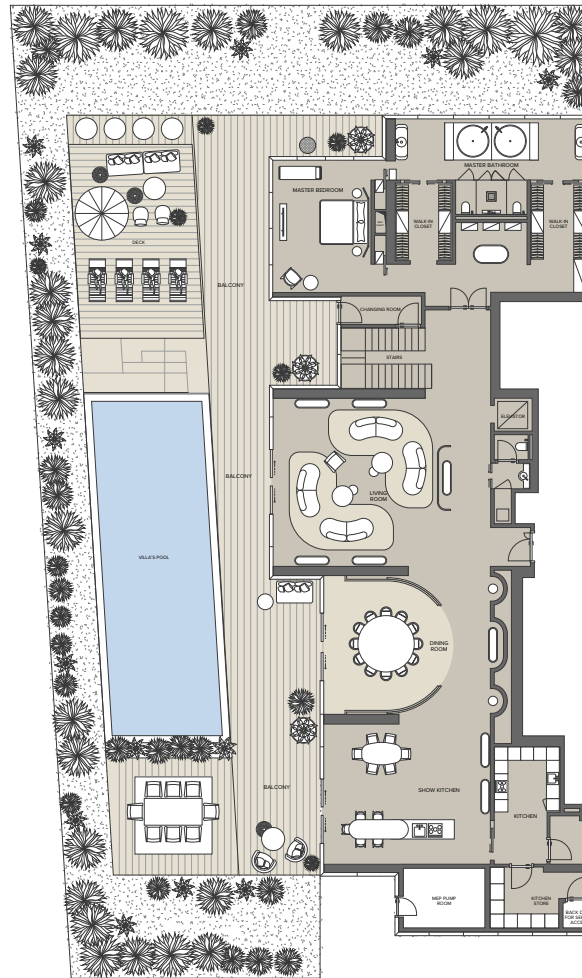
2nd Floor Plan

DUBAI WATER CANAL VIEW



1st Floor Plan

DUBAI WATER CANAL VIEW



Pool Area
  Internal Area
  Terrace Area

Apartment Type: **VILLA**

Unit Number: **101**

Internal Area: **6,172 ft<sup>2</sup> (573.36 m<sup>2</sup>)**

External Area: **7,207 ft<sup>2</sup> (669.5 m<sup>2</sup>)**

Total Area: **13,379 ft<sup>2</sup> (1242.9 m<sup>2</sup>)**

View: **Dubai Water Canal**

Bedrooms: **4**

All room sizes and floorplan measurements are approximate and may vary per unit. Floorplans and unit features are preliminary and proposed only. Developer reserves the right to modify, revise, change or withdraw any or all of same in its sole and absolute discretion and without prior notice. Depictions of furnishings, finishes, appliances, counters, soft fits, floor coverings and other matters of detail, including, without limitation, items of finish and decoration are conceptual only and are not necessarily included in each Unit. Consult your Agreement and the Prospectus for items included with your Unit.

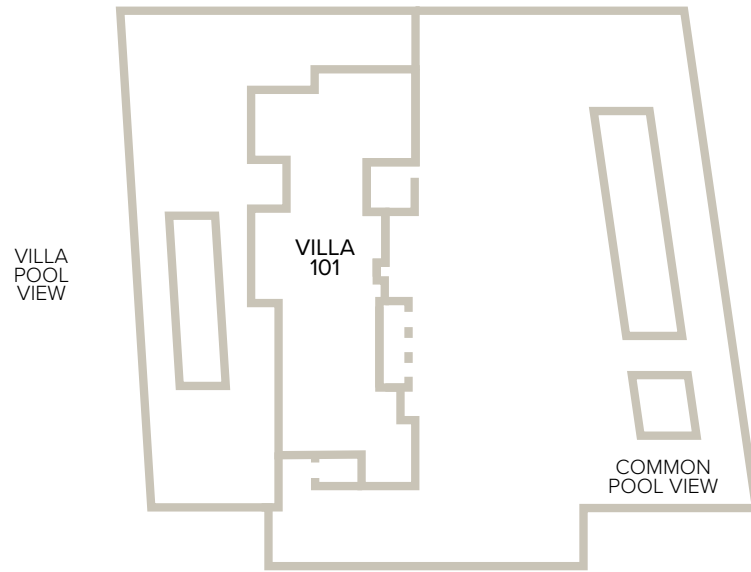
# FLOORS 1 & 2



## THE RITZ-CARLTON RESIDENCES

DUBAI, BUSINESS BAY

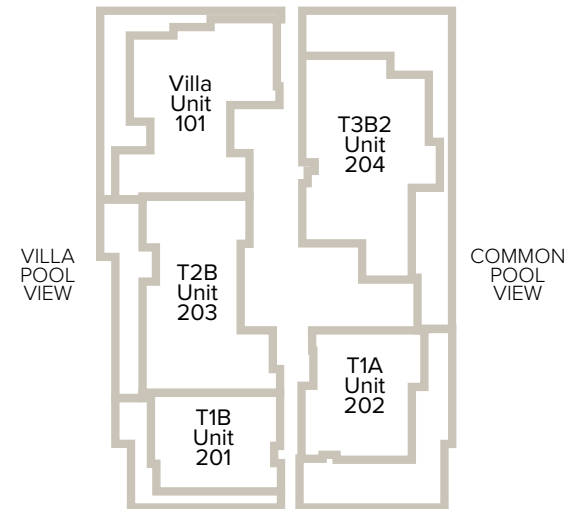
DUBAI WATER CANAL VIEW



AL KHAIL ROAD VIEW

**1st Floor**

DUBAI WATER CANAL VIEW



AL KHAIL ROAD VIEW

**2nd Floor**



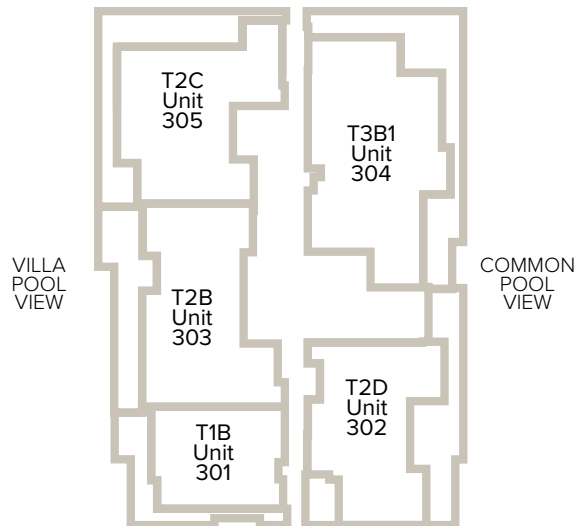
# FLOORS 3, 4 & 5



## THE RITZ-CARLTON RESIDENCES

DUBAI, BUSINESS BAY

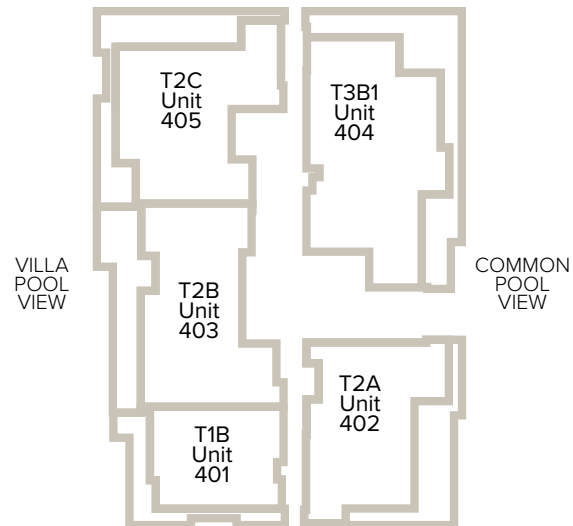
DUBAI WATER CANAL VIEW



AL KHAIL ROAD VIEW

**3rd Floor**

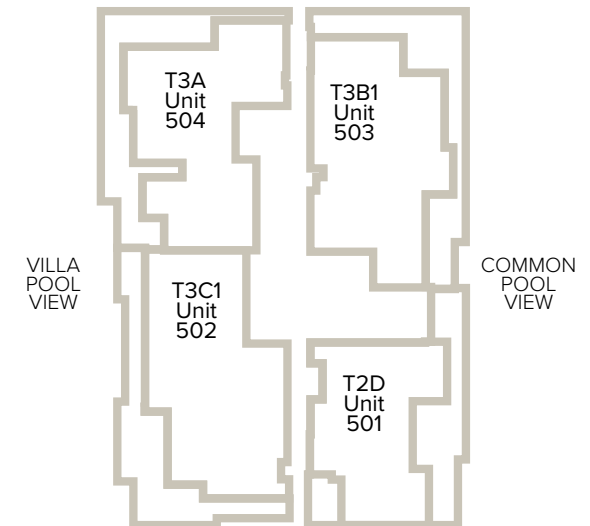
DUBAI WATER CANAL VIEW



AL KHAIL ROAD VIEW

**4th Floor**

DUBAI WATER CANAL VIEW



AL KHAIL ROAD VIEW

**5th Floor**

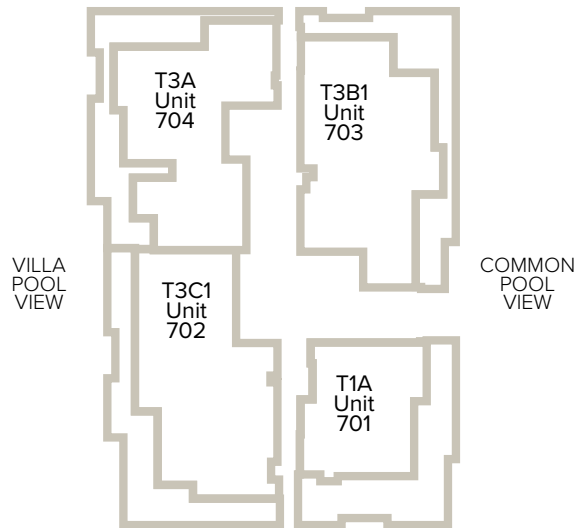
# FLOORS 7, 8 & 9



## THE RITZ-CARLTON RESIDENCES

DUBAI, BUSINESS BAY

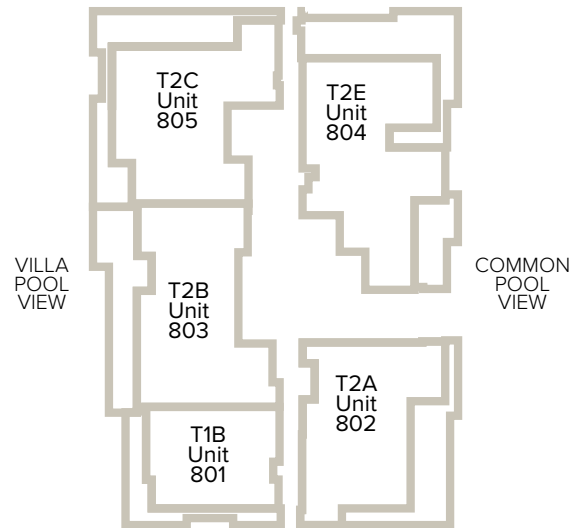
DUBAI WATER CANAL VIEW



AL KHAIL ROAD VIEW

**7th Floor**

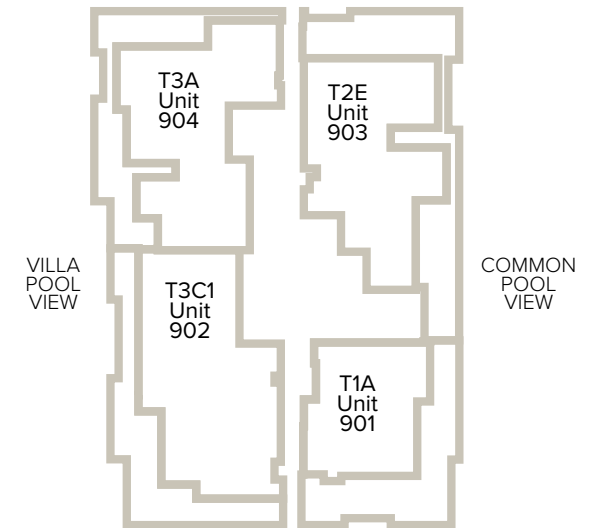
DUBAI WATER CANAL VIEW



AL KHAIL ROAD VIEW

**8th Floor**

DUBAI WATER CANAL VIEW



AL KHAIL ROAD VIEW

**9th Floor**

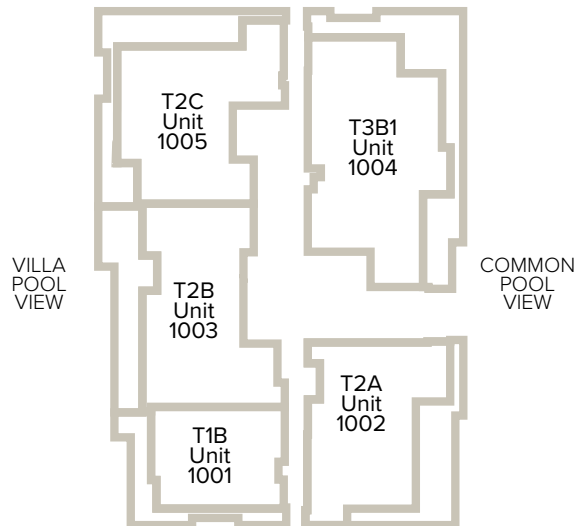
# FLOORS 10, 11, & 12



## THE RITZ-CARLTON RESIDENCES

DUBAI, BUSINESS BAY

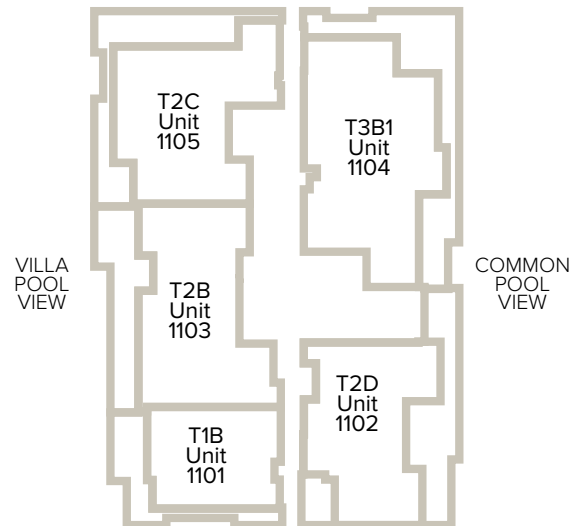
DUBAI WATER CANAL VIEW



AL KHAIL ROAD VIEW

**10th Floor**

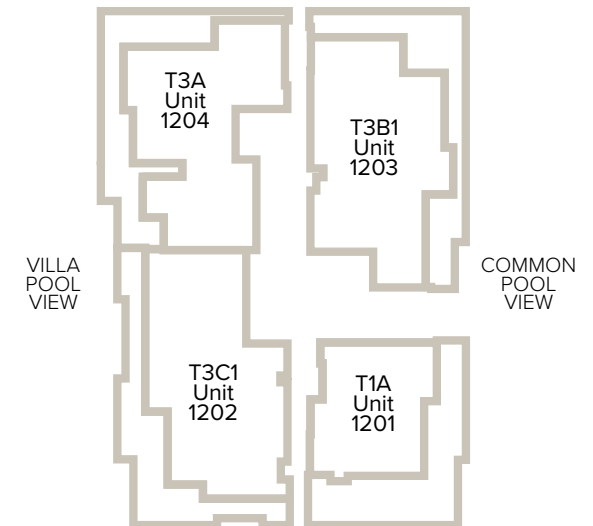
DUBAI WATER CANAL VIEW



AL KHAIL ROAD VIEW

**11th Floor**

DUBAI WATER CANAL VIEW



AL KHAIL ROAD VIEW

**12th Floor**

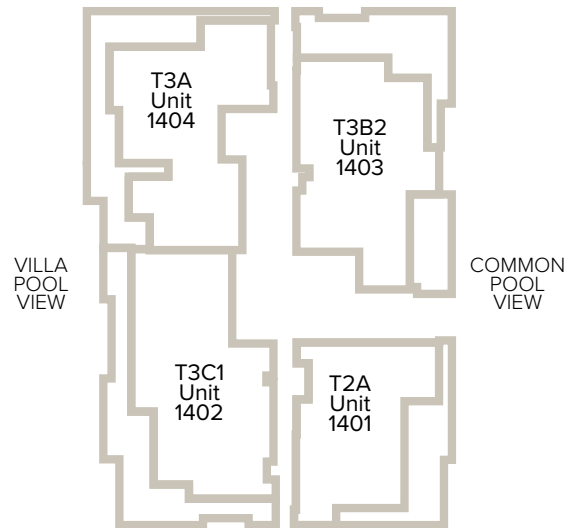
# FLOORS 14, 15 & 16



## THE RITZ-CARLTON RESIDENCES

DUBAI, BUSINESS BAY

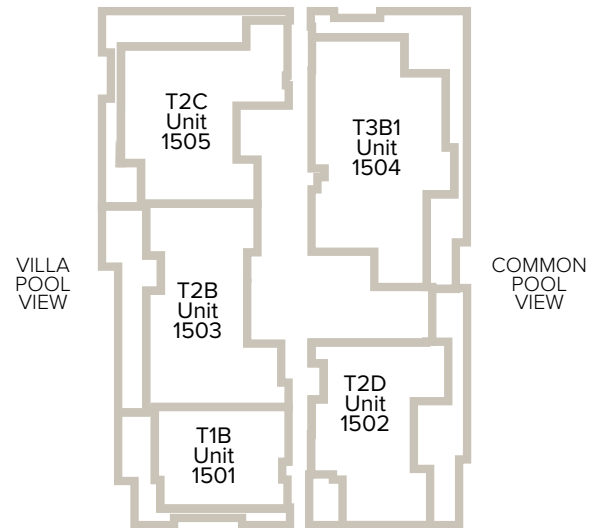
DUBAI WATER CANAL VIEW



AL KHAIL ROAD VIEW

**14th Floor**

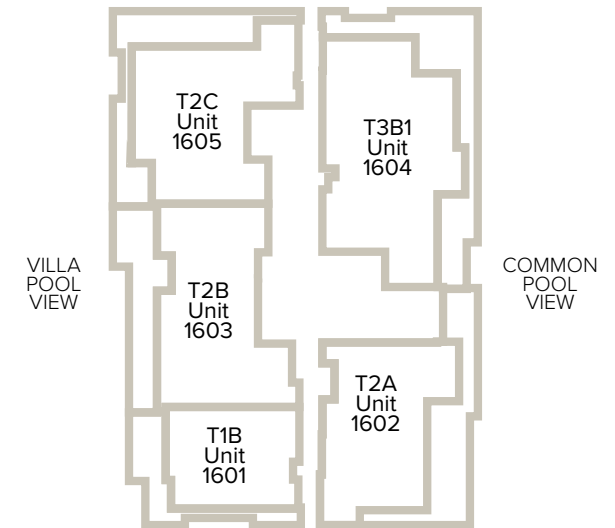
DUBAI WATER CANAL VIEW



AL KHAIL ROAD VIEW

**15th Floor**

DUBAI WATER CANAL VIEW



AL KHAIL ROAD VIEW

**16th Floor**

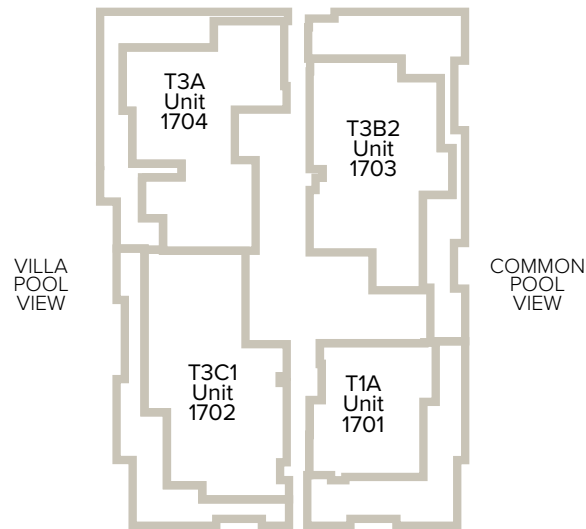
# FLOORS 17 & 18



## THE RITZ-CARLTON RESIDENCES

DUBAI, BUSINESS BAY

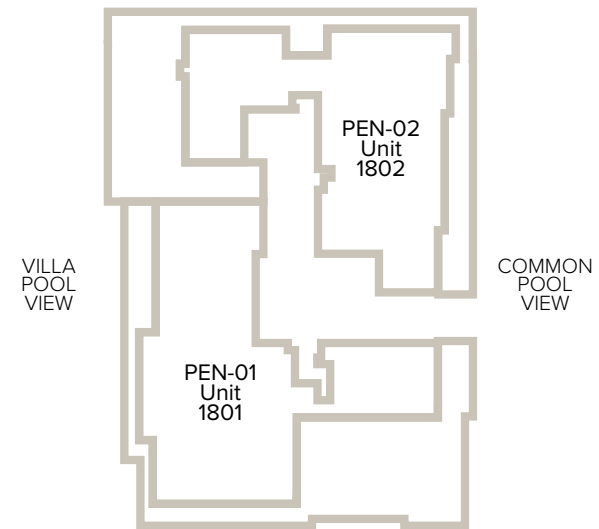
DUBAI WATER CANAL VIEW



AL KHAIL ROAD VIEW

**17th Floor**

DUBAI WATER CANAL VIEW



AL KHAIL ROAD VIEW

**18th Floor**



# THE RITZ-CARLTON RESIDENCES

DUBAI, BUSINESS BAY

The Ritz-Carlton Residences, Dubai, Business Bay are not owned, developed or sold by Global Hospitality Licensing S.a.r.l or its affiliates ("Ritz-Carlton"). GHL uses The Ritz-Carlton marks under a license from Ritz-Carlton, which has not confirmed the accuracy of any of the statements or representations made herein.