

# E C O V E R S E

RESORT & RESIDENCES

PRE LAUNCH  
ONLY

NOT FOR PUBLIC  
DISTRIBUTION

NUANU × OXO

# CONTENTS

## PRODUCT

Concept	03
Key facts	04
Sustainable design	05
Unit selection	08
Four bedroom townhouse	10
Three bedroom townhouse	13
Two bedroom townhouse	16
Suite type	19
Apartment type	25
Bespoke design	28

## LIFESTYLE

Experiences	33
Lifestyle	37
School	41
Next steps	42

CONCEPT

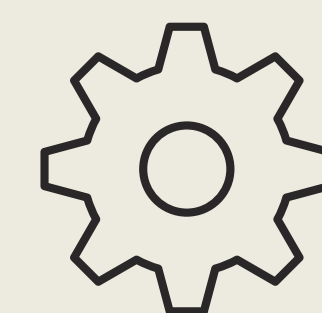


# A RESORT THAT FEELS LIKE HOME



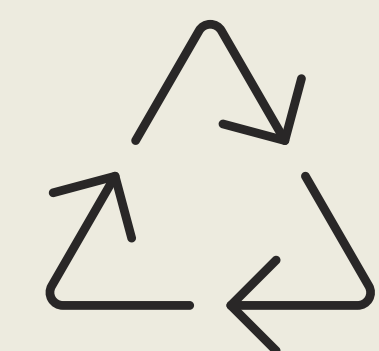
## EXCEPTIONAL SERVICES

Premium services and a curated program for guests and residents



## RESORT FACILITIES

Shared facilities for work and leisure



## ECO AND SUSTAINABLE

Sustainability through intelligent design, ecological building materials and smart living technology

# OVERVIEW

A NEW GENERATION OF SUSTAINABLE INVESTMENT HOMES WITH CLUBHOUSE, SHARED FACILITIES, PREMIUM SERVICES AND DIRECT ACCESS TO NUANU CITY.

## 16 TOWNHOUSES 34 APARTMENTS

1 & 2 bedroom suites and apartments  
2, 3 & 4 bedroom townhouse

## PROPERTY SIZES

Units 35-382m2  
Resort land size 7,260m2 of residential and back-of-house facilities

## COMPLETION

Completion in Q2 2025

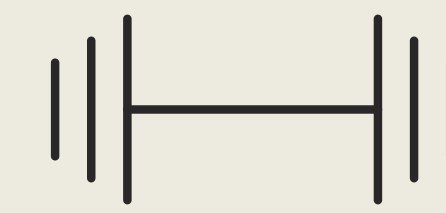
## BASE PRICE RANGE

USD 150,000 - USD 889,000  
Payment plans are available

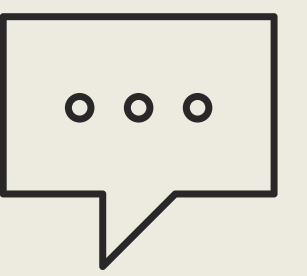
## AMENITIES



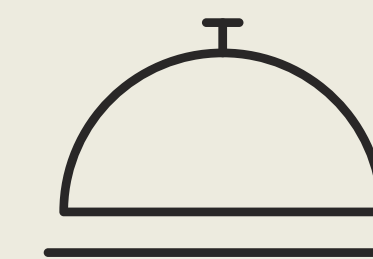
RESTAURANT & POOL BAR



GYM & WELLNESS



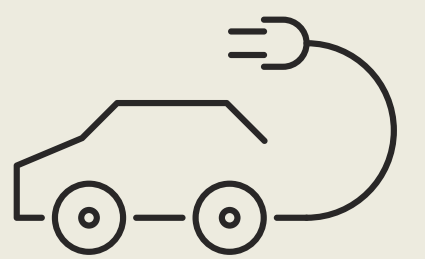
CO-WORKING



CONCIERGE SERVICE



GREEN ROI & IMPACT



ELECTRIC MOBILITY

## LEASEHOLD 28 + 30 YEARS

28 year leasehold with the option to extend for another 30 years at the market land price

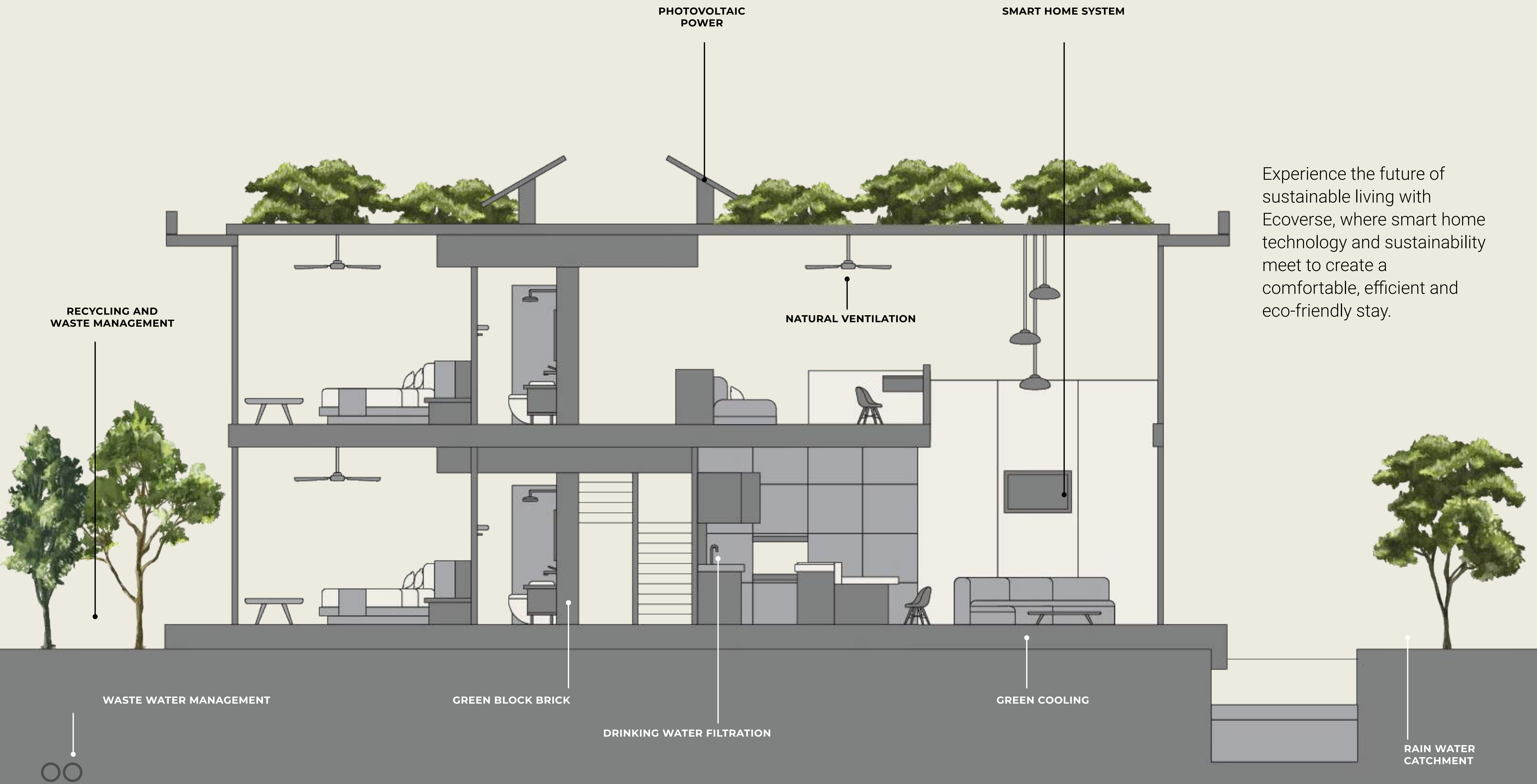


# WITH THE FUTURE IN MIND

STATE-OF-THE-ART  
ENVIRONMENTAL  
FEATURES FOR  
MAXIMUM  
EXPERIENCE WITH  
MINIMUM IMPACT.



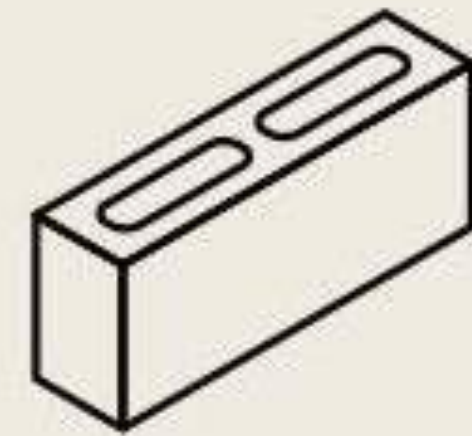
Home automation, innovative building materials and conscious operational practices with the goal of making a difference for investors and the environment.



Experience the future of sustainable living with Ecoverse, where smart home technology and sustainability meet to create a comfortable, efficient and eco-friendly stay.

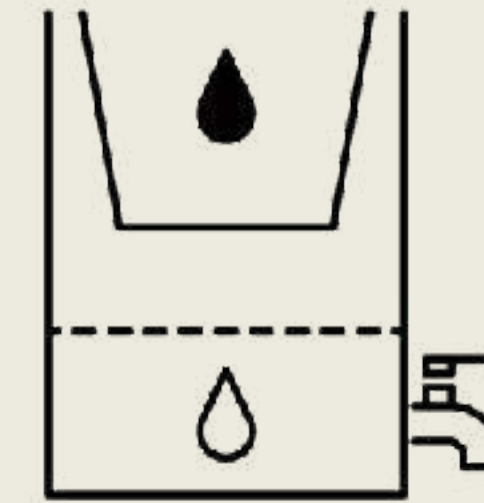
# LOW IMPACT

Responsibility for our environment and our impact on the earth and community is at the core of our integrity and everything we do.



## GREEN BLOCK BRICK

Repurposed coal byproducts transformed into lighter, stronger geo-polymer concrete blocks.



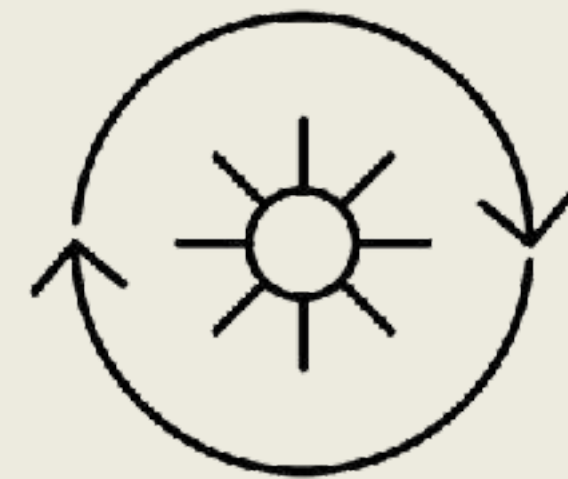
## DRINKING WATER FILTRATION

Drinking water tap with sophisticated water filtration.



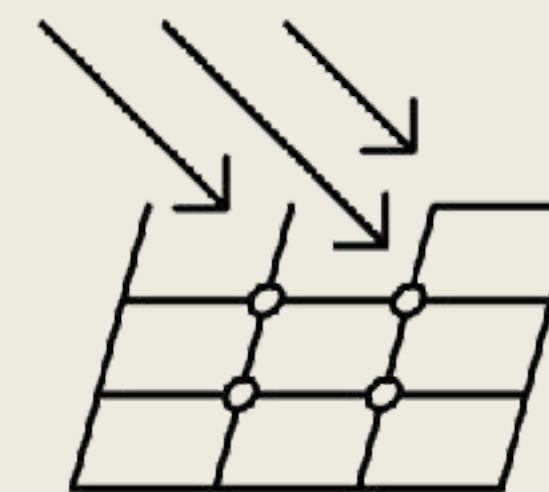
## WATER MANAGEMENT

Rainwater catchment, sprinkler systems and waste water treatment to minimize water usage.



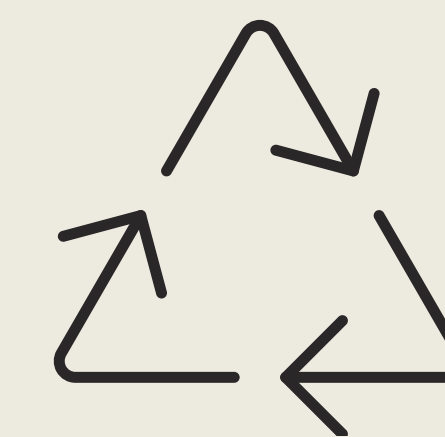
## SUSTAINABLE COOLING

Smart thermostats, high-quality insulation and innovative cooling technology ensures a better experience and a reduction of operational costs.



## PHOTOVOLTAIC POWER

Solar panels reduce the dependence on fossil fuels and create more secure power stability.



## RECYCLING & WASTE MANAGEMENT

On-site recycling and waste management practices integrated into resort operations.

# THE DEVELOPMENT

Professional and reliable property development with efficiency in mind.



## A TURNKEY DEVELOPMENT

Fully equipped with furniture, fittings and ready for occupation

## EXCEPTIONAL MANAGEMENT

Professional management guarantees effortless ownership

## SUPERIOR CONSTRUCTION

Highest quality construction and construction management starting in summer 2023

## COMPREHENSIVE CERTIFICATION

Construction, building and engineering certification

## BUILDING WARRANTY

12-month building warranties and defect liabilities without questions asked



# UNIT KEY



4-BEDROOM TOWNHOUSE WITH GARDEN AND POOL



HIGHLIGHTS

- Only one 4-bedroom unit
- Double-width townhouse
- 15m2 pool, high-end show kitchen, spacious entrainment areas, roof terrace and stunning scenery

## 4 BEDROOM TOWNHOUSE



### SPECIFICATIONS

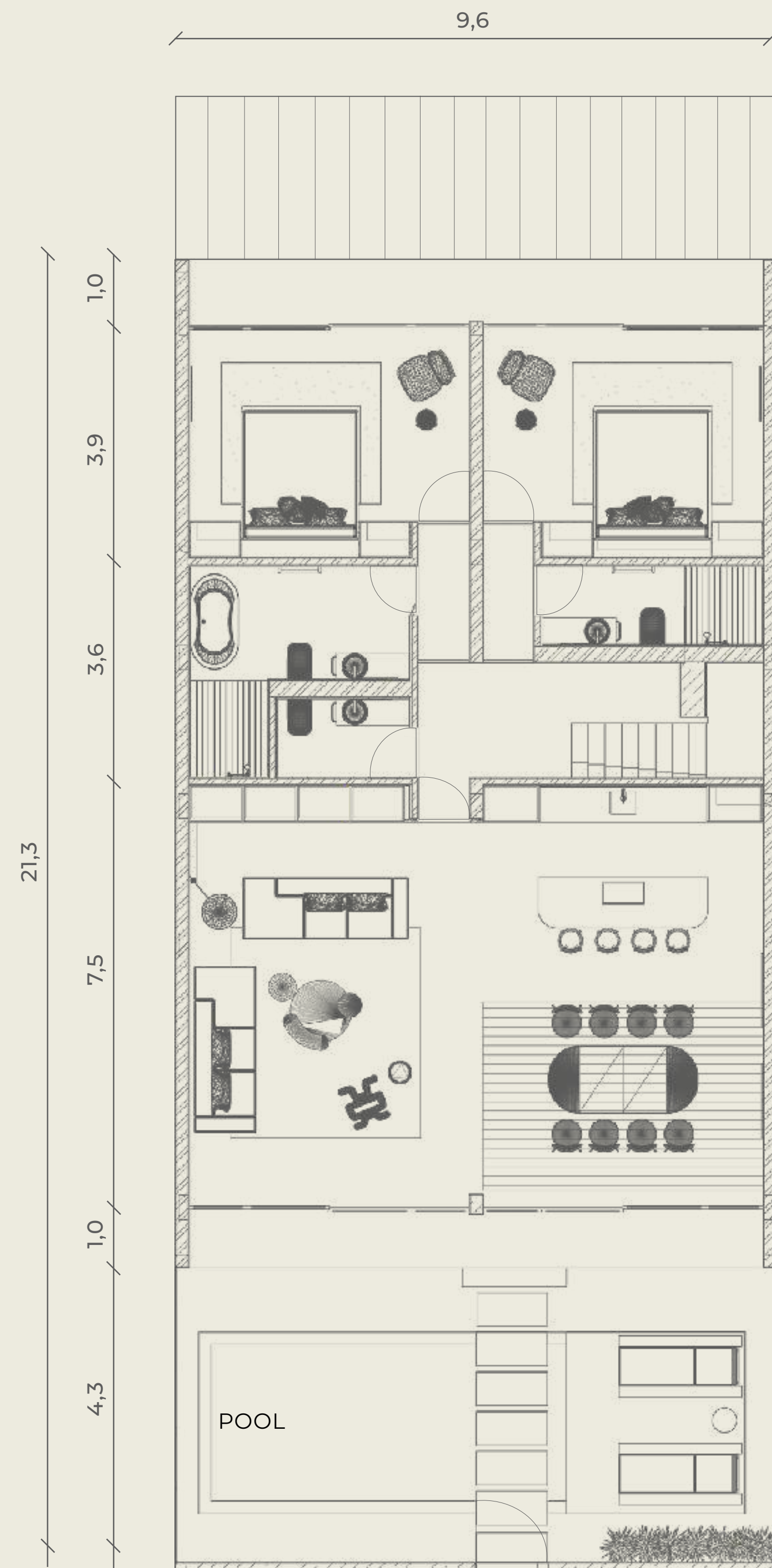
- 4 Bedrooms
- 5 Bathrooms
- Interior 260m<sup>2</sup>
- Pool garden 46m<sup>2</sup>
- Terrace 121m<sup>2</sup>
- Total area 428m<sup>2</sup>
- Roof terrace
- Sauna
- Rooftop bar
- Mezzanine office
- Private pool & garden
- 2 Car park
- Zen garden
- Double-height ceilings
- 2 Ensuite master bathrooms
- State-of-the-art appliances
- Jacuzzi



GROUND FLOOR

FIRST FLOOR

SECOND FLOOR



UNIT NO: 2110

3-BEDROOM  
TOWNHOUSE WITH  
GARDEN AND POOL

HIGHLIGHTS

- A grand 154m2 townhouse
- Three levels, with a roof terrace, master bedroom and en-suite bathrooms, featuring expansive sunrise and sunset views

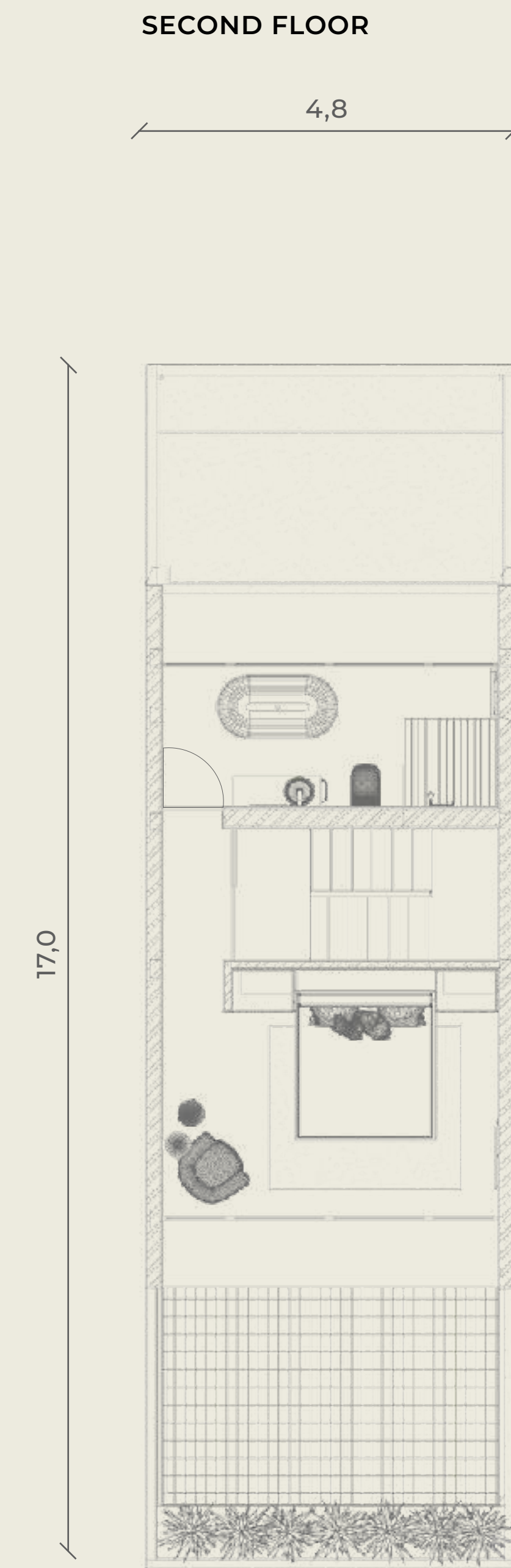
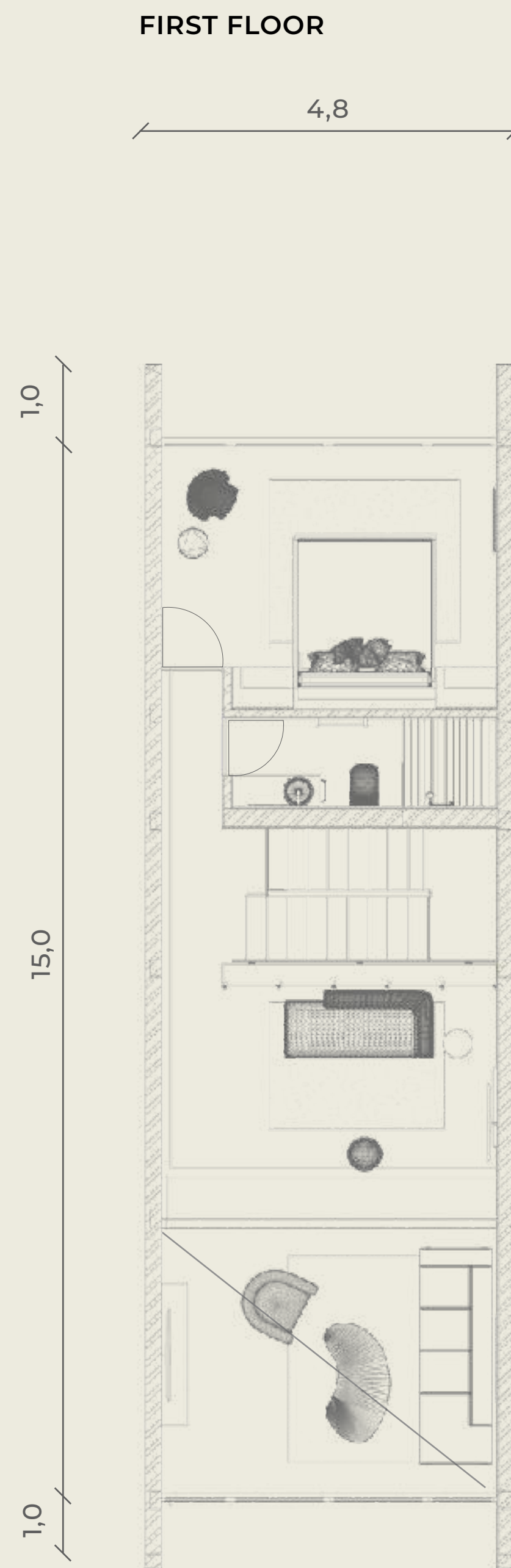
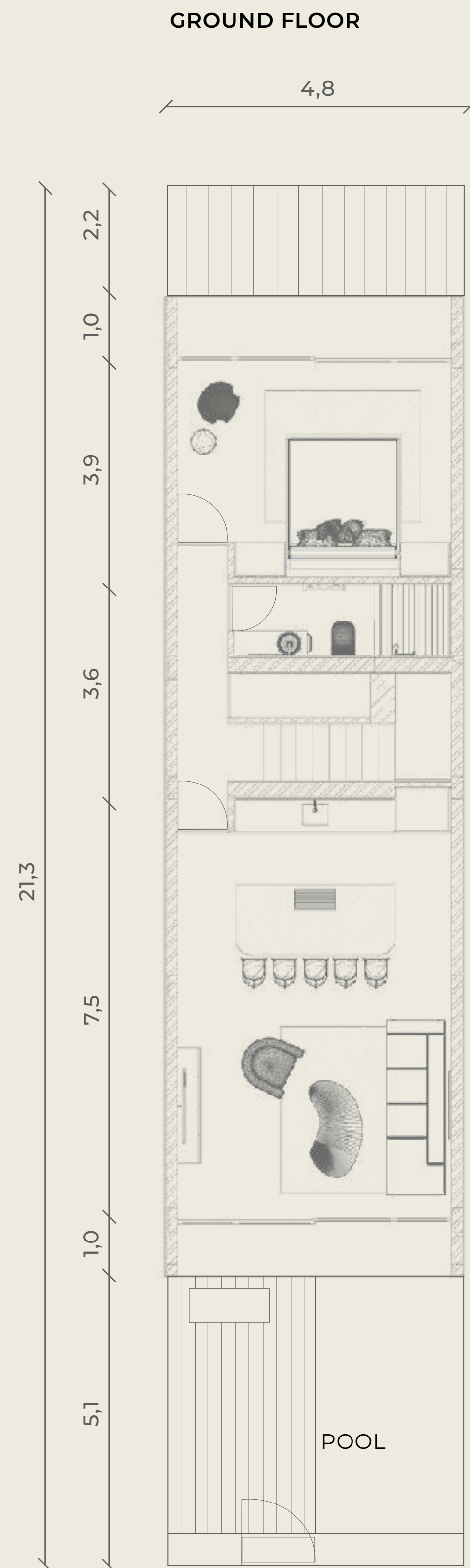


## 3 BEDROOM TOWNHOUSE



### SPECIFICATIONS

- 3 Bedrooms
- 3 Bathrooms
- Interior 154m<sup>2</sup>
- Pool garden 33-40m<sup>2</sup>
- Terrace 32m<sup>2</sup>
- Total area 211m<sup>2</sup>
- Roof terrace
- Mezzanine office
- Private pool
- Zen garden
- Double-height ceilings
- Car park
- 1 Ensuite master bedroom
- State-of-the-art appliances
- 3 Floors



UNIT NO: 2102, 2104, 2106, 2108, 2112, 2114, 2116

**2-BEDROOM  
TOWNHOUSE WITH  
GARDEN AND POOL**

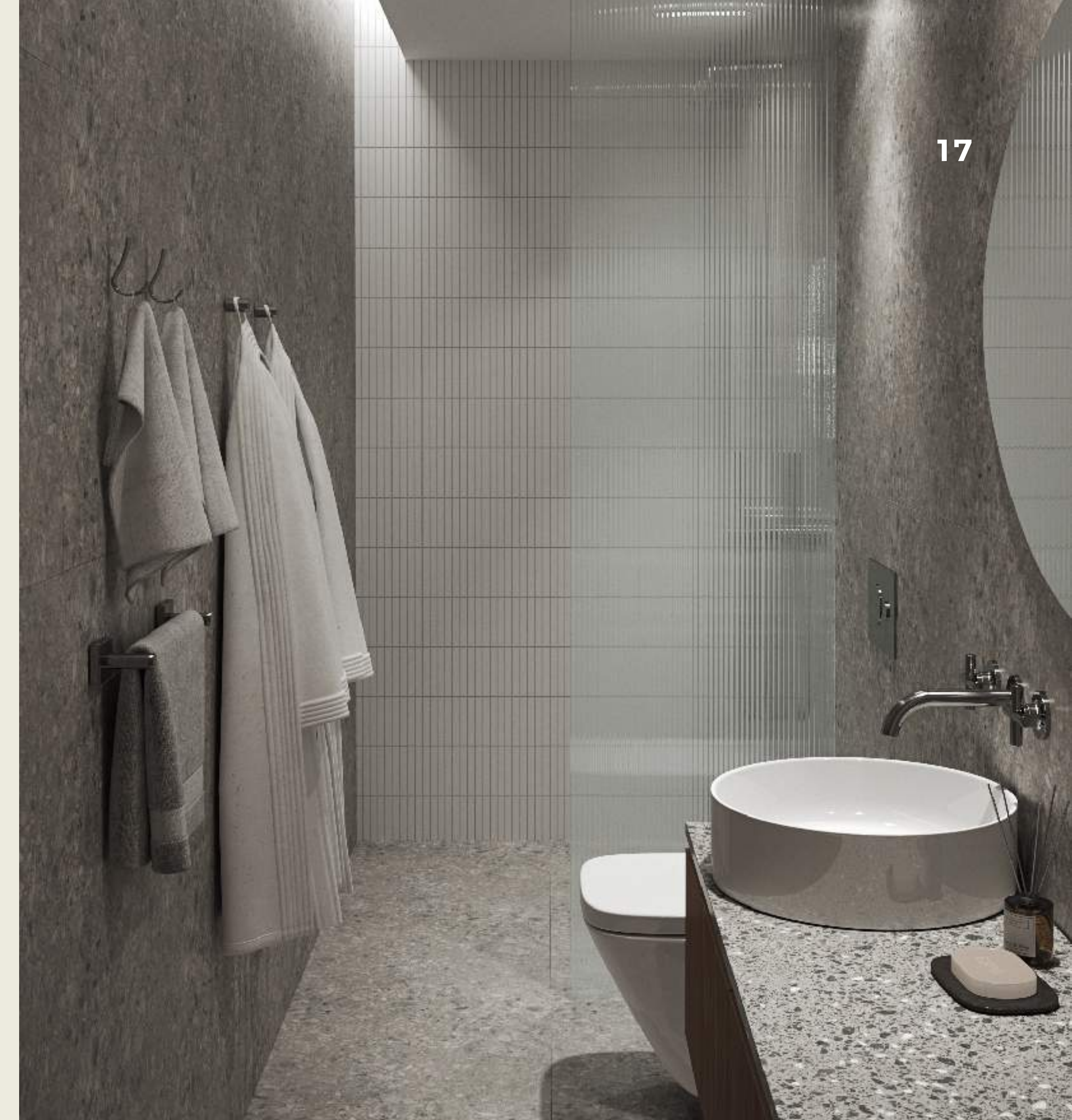


**HIGHLIGHTS**

- Set over two floors
- The 128m2 townhouse features a grand double-height living area with mezzanine office space, a state-of-the-art show kitchen, floor-to-ceiling windows, and premium bathrooms



## 2 BEDROOM TOWNHOUSE



### SPECIFICATIONS

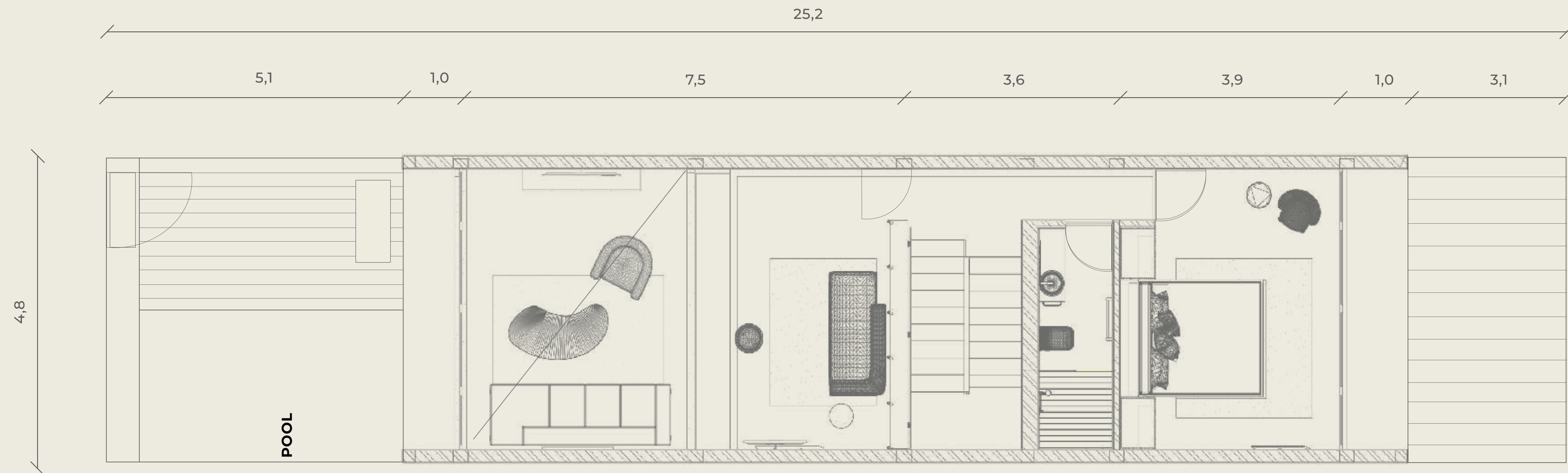
- 2 Bedrooms
- 2 Bathrooms
- Interior 116m<sup>2</sup>
- Pool garden 35-42m<sup>2</sup>
- Terrace 9.5m<sup>2</sup>
- Total area 150m<sup>2</sup>
- Sweeping rice-field views
- Mezzanine office
- Private pool
- Zen garden
- Double-height ceilings
- Pull-out sofa guest suite
- State-of-the-art appliances
- 2 Floors
- Garden view
- Intelligent storage
- Car park



FIRST FLOOR



GROUND FLOOR



UNIT NO: 2101, 2103, 2105, 2107, 2109, 2211, 2113, 2115

SUITE TYPE 01  
GARDEN | SKY



**HIGHLIGHTS**

- One floor, 35-40m2 suite features a platform bed with intelligent storage, a compact kitchen with premium appliances, an elegant seating area and a smart fold-away dining table





### SPECIFICATIONS

- 1 Bed
- 1 Bathroom
- Interior 35-40m2
- Park or sky view
- Underground parking
- Intelligent storage areas
- Compact and efficient versatile island
- Floor-to-ceiling windows
- Elegant seating area
- 1st-floor zen garden or 2nd-floor sky view

GROUND FLOOR



UNIT NO: 2102, 2104, 2106, 1102, 1104, 1106

SUITE TYPE 02  
GARDEN | SKY



HIGHLIGHTS

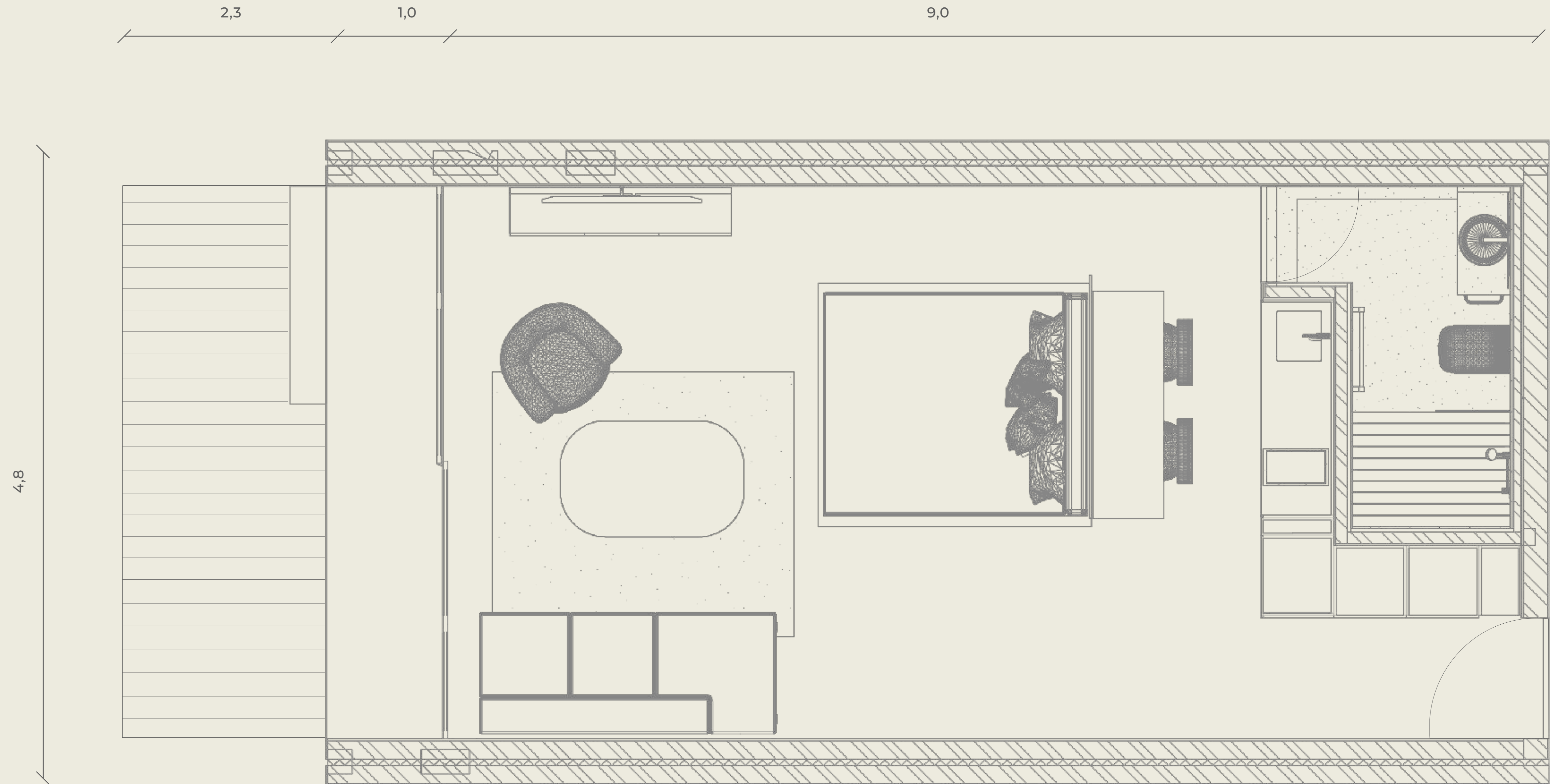
- One floor, 40-45m2 suite features an island bed with intelligent storage, a compact kitchen with premium appliances and an elegant seating area



## SPECIFICATIONS

- 1 Bed
- 1 Bathroom
- Interior 40-45m<sup>2</sup>
- Park, sky or pool view
- Underground parking
- Intelligent storage areas
- Compact and efficient versatile island
- Floor-to-ceiling windows
- Elegant seating area
- 1st-floor zen garden or 2nd-floor sky view

GROUND FLOOR



UNIT NO: 2101, 2103, 2105, 1101, 1103, 1105, 4206, 4205, 4204, 4203, 4202, 4104, 4103, 4102, 3107, 3015, 3103, 3101, 3207, 3205, 3203, 3201



APARTMENT TYPE 01  
GARDEN | SKY



HIGHLIGHTS

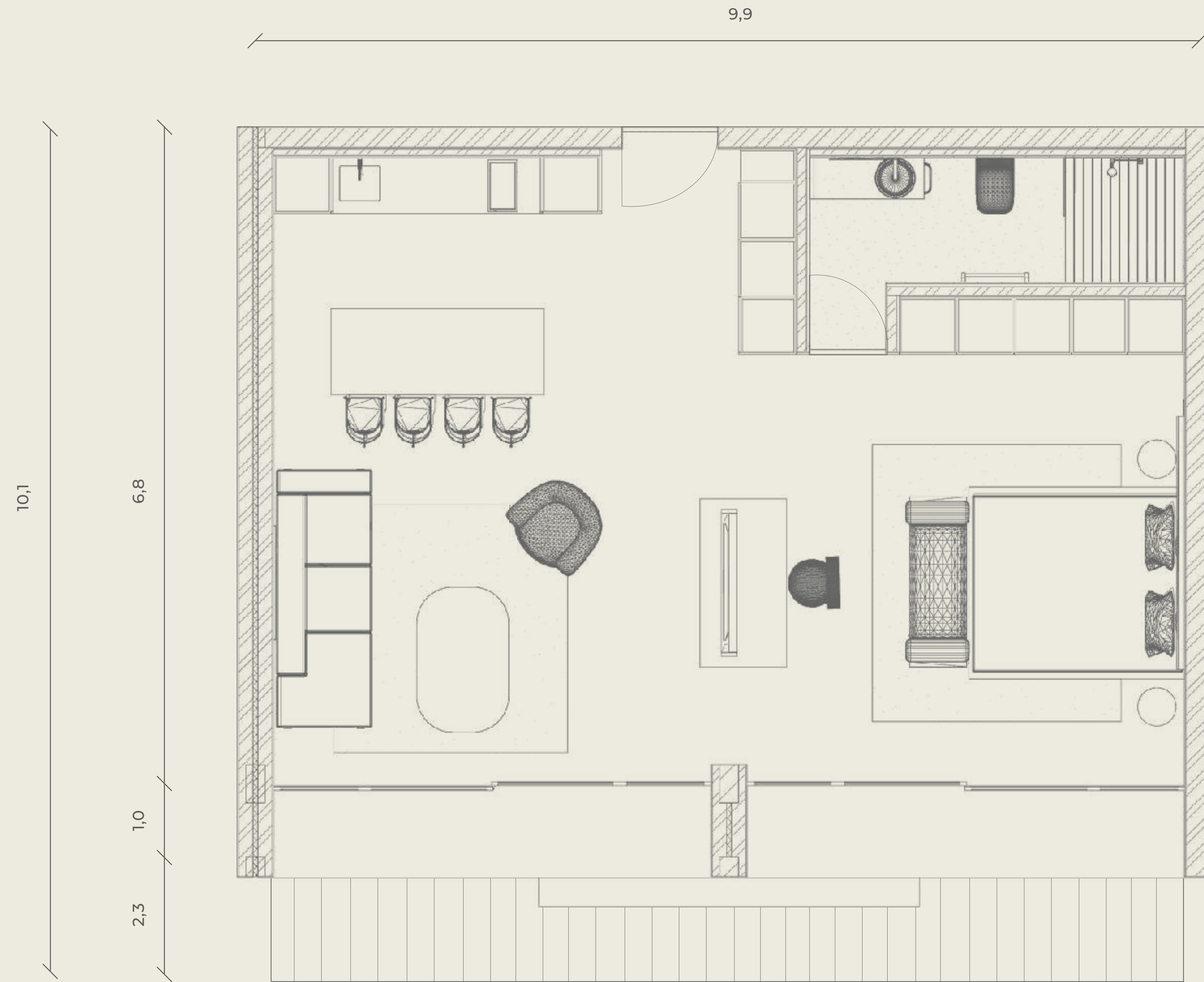
- Set over one floor, this 63-71m<sup>2</sup> apartment features a grand double-width living area with a state-of-the-art kitchen, floor-to-ceiling windows, and premium bathrooms



## SPECIFICATIONS

- 1 Studio bedroom
- 1 Bathroom
- Interior 63-71m<sup>2</sup>
- Park or sky view
- Underground parking
- Intelligent storage areas
- Compact and efficient kitchen island
- Elegant seating area
- 1st-floor zen garden or 2nd-floor sky view
- Floor-to-ceiling windows

GROUND FLOOR



UNIT NO: 3104, 3102, 3204, 3202

BESPOKE DESIGN

# MAKE IT YOURS

HIGH-QUALITY,  
HAND-SELECTED  
NEO-LUXURY  
INTERIOR  
DECORATING  
OPTIONS, ALL  
UNITS ARE  
DELIVERED  
COMPLETELY  
TURNKEY.

NUONU x OXO



## BESPOKE DESIGN

# CRIMSON

A standout colour palette with pops of crimson, reds and auburn hues, creates a fun yet understatedly elegant vibe.



nuanu x oxo

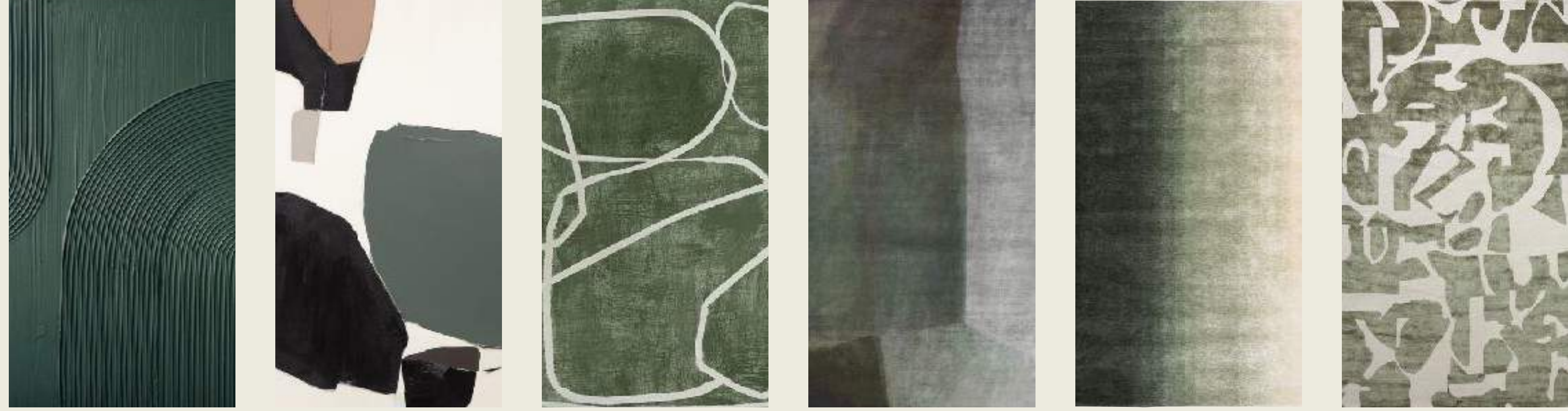




## COBALT

Cool and creative, the accents of brilliant blues offer a bright environment and create a sense of fluidity.

## BESPOKE DESIGN



## EMERALD

Earthy tones create an undertone of masculinity that exudes understated elegance.





## SAND

Super chic and minimalistic whites and neutrals are perfect for those seeking a fresh atmosphere with a refined touch.



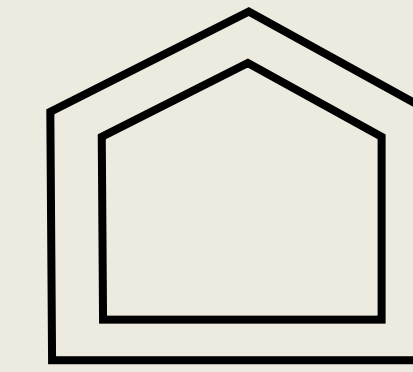




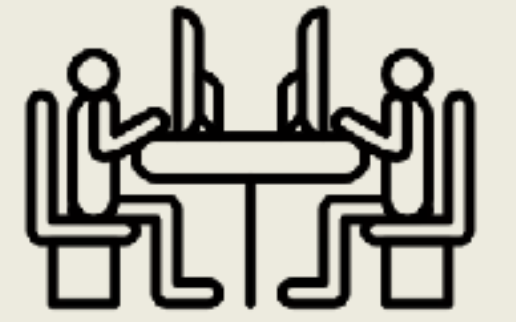
# FACILITIES AND SERVICES



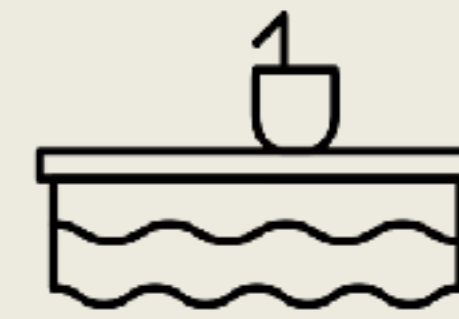
**LIBRARY**



**CLUBHOUSE**



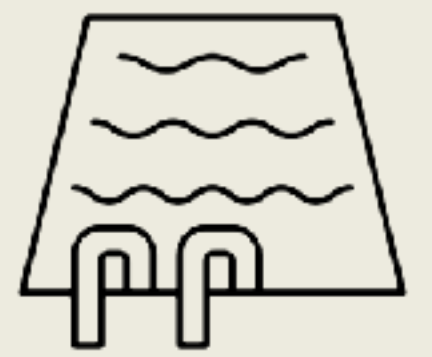
**COWORKING**



**POOL BAR**



**FITNESS CENTER**



**SWIMMING POOL**

A variety of select hotel and residential facilities for the convenience of guest and investors, including restaurants, spa, sauna and clubhouse.

EXPERIENCE



34

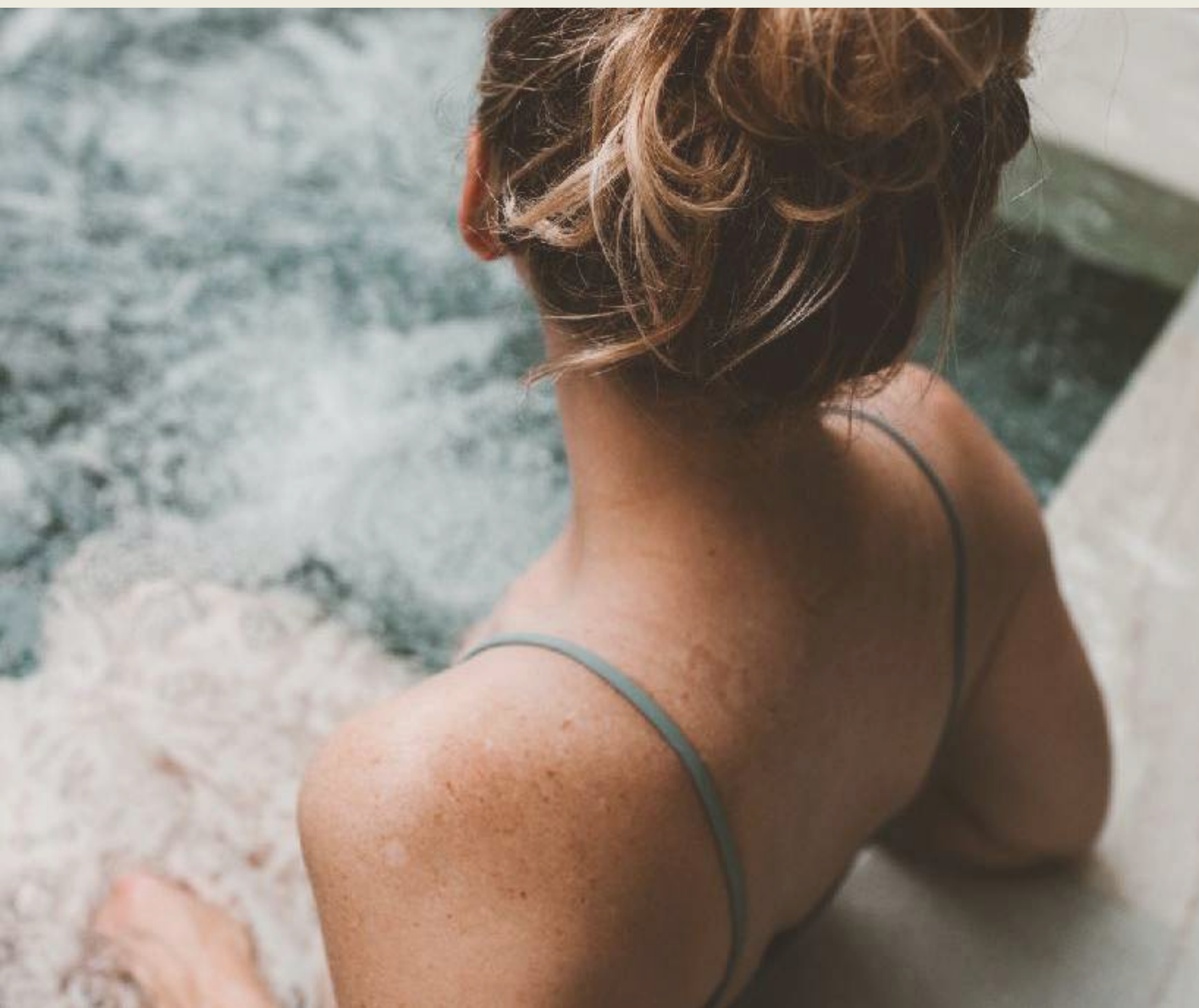
## CO-WORKING, CLUBHOUSE & RESTAURANT

Work, dine and meet,  
all a short walk from  
your residence.

NUANU × OXO



EXPERIENCE



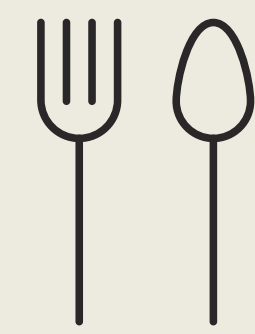
35

## FITNESS CENTER, POOL BAR & SPA

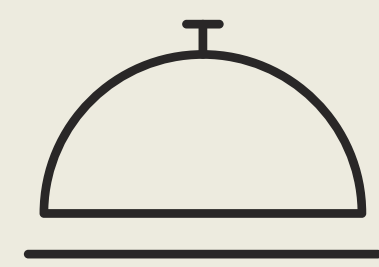
Play, relax, socialize  
and stay in shape, all  
in one place.



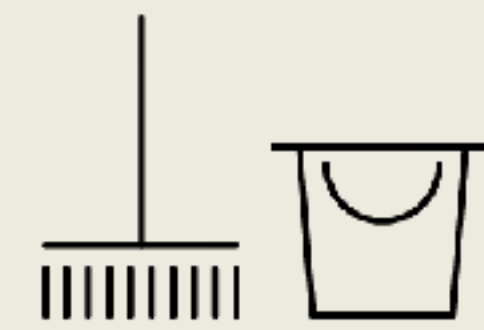
# GUEST SERVICES



PRIVATE DINING



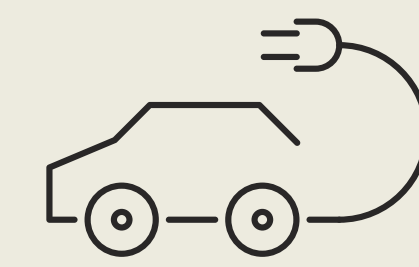
CONCIERGE SERVICE



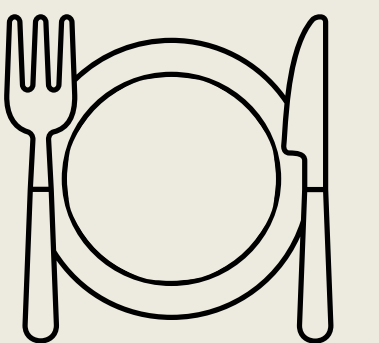
HOUSE KEEPING



CURATED PROGRAM



ELECTRIC MOBILITY



F&B SERVICE



LIFESTYLE

LIFESTYLE



NUANU x OXO

CULTURE



EVENTS



**EXPERIENCES & ENTERTAINMENT**

Nuanu and Pantai Nyanni offer endlessly evolving experiences of events, outdoor activities, beach club, art, music, fitness, surfing, beaches and more.

# NUANU CITY MAP

## 1 STAGE

- 1 Ceremonial venue
- 2 Elevated Platform
- 3 Restaurant
- 4 Cave pool
- 5 Lighthouse
- 6 Amphitheater
- 7 Treehouse
- 8 Tantangan
- 9 Tamantera
- 10 Dayak Long House
- 11 Workshop
- 12 Labyrinth
- 13 Daniel Popper Statues
- 14 Art village
- 15 Stone stage
- 16 Parking 1

## 2 STAGE

- 18 Head
- 19 Phi camp
- 20 Common Building

## 3 STAGE

- 21 Soul
- 22 Central square
- 23 Science centre
- 24 Cinema and sound
- 25 Cinema bridge
- 26 Design centre
- 27 Fitness centre
- 28 Harmony
- 29 ProEducation School
- 30 Willow Hotel
- 31 Fashion/ Handmade centre
- 32 Master houses and maker space
- 33 Student apartments 1
- 34 Parking 2
- 35 Big Maker Space

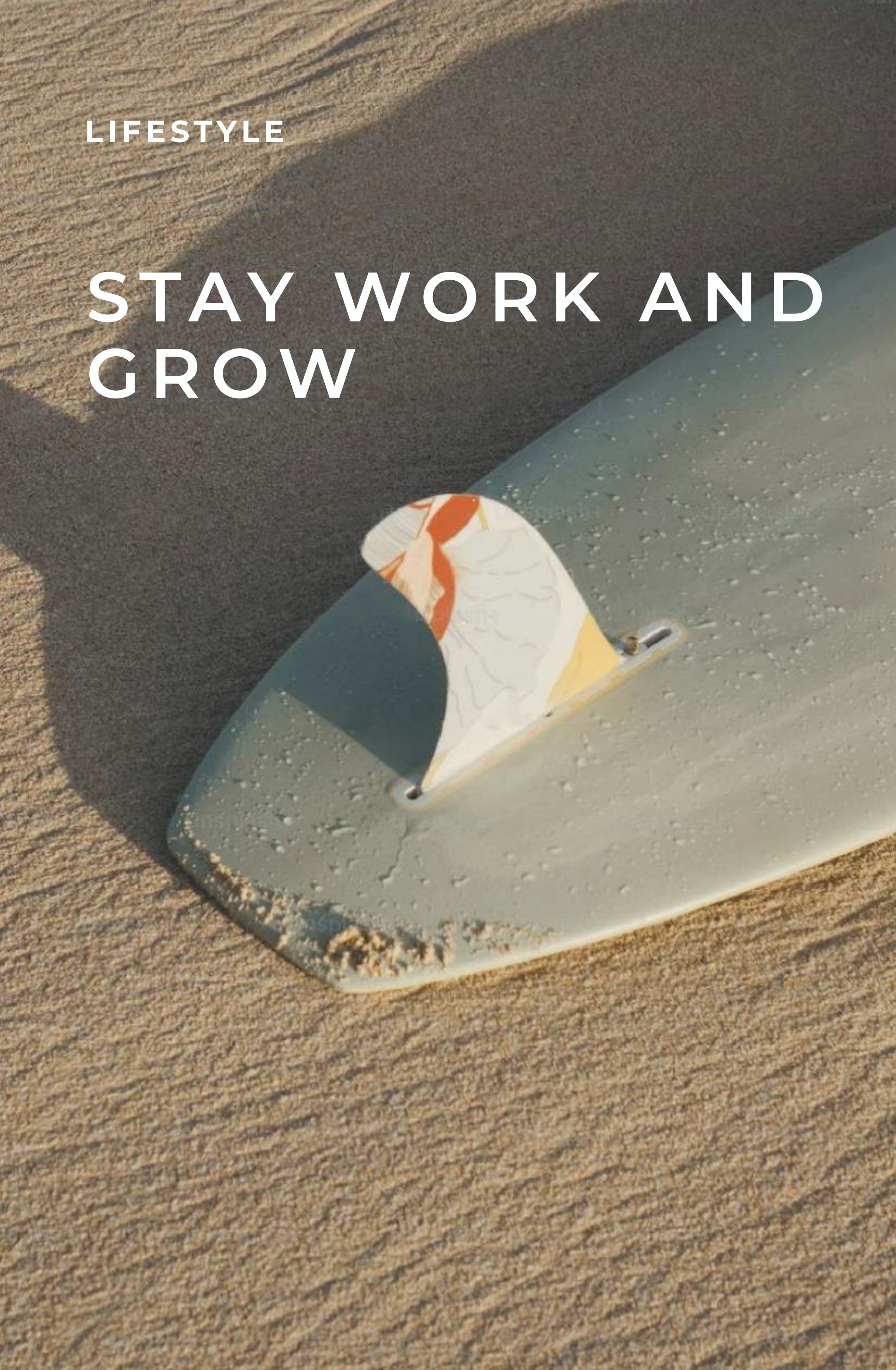


**ECOVERSE**



LIFESTYLE

# STAY WORK AND GROW



Ecoverse is walking distance form Nuau City, where many curated programs offer learning experiences, classes in fitness and arts, tours much more.

NUAUNU x OXO

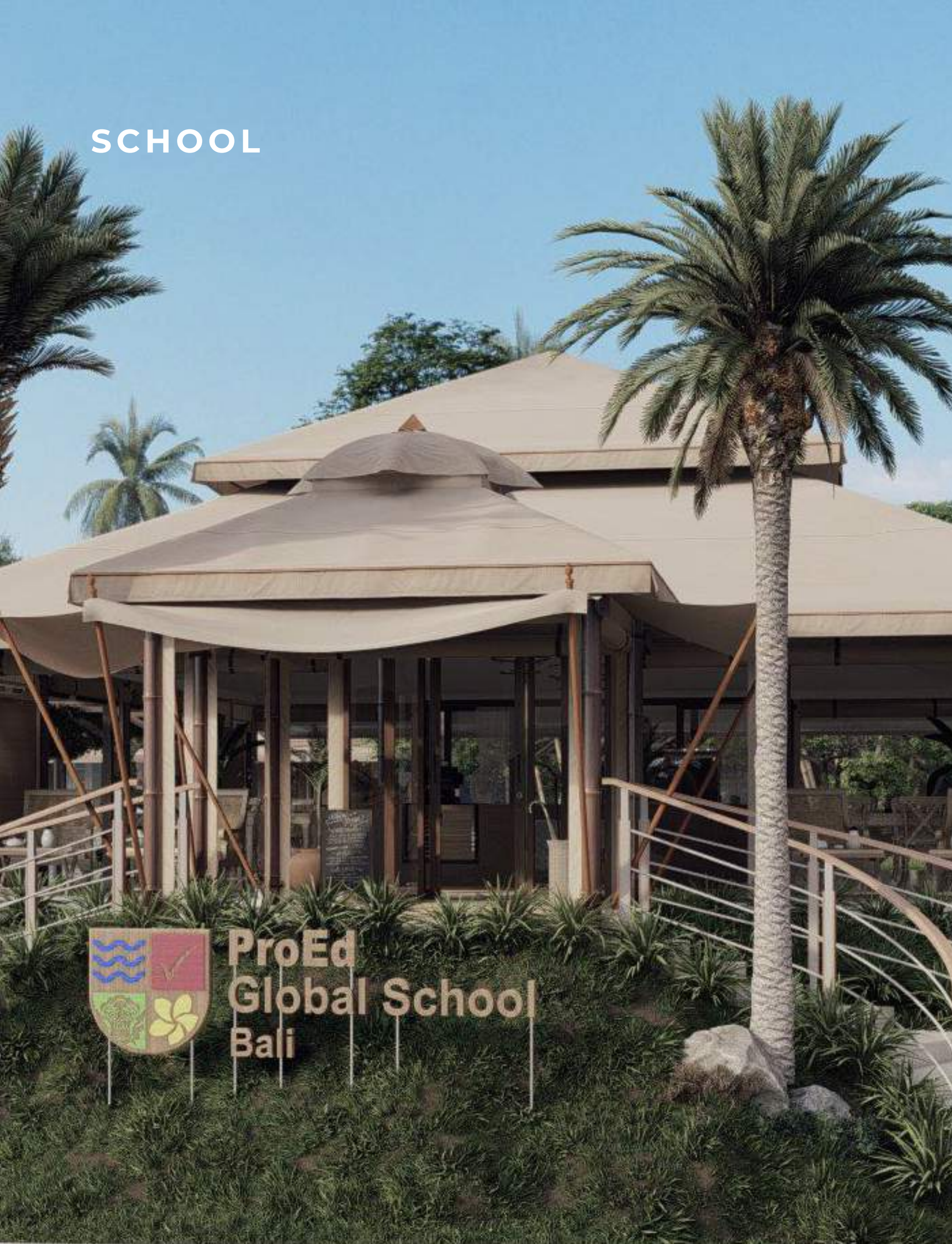


From easy access to surf spots, electric bike rides through the area, relaxing beaches, galleries, parks and nature activities, everything is right at your doorstep.





# SCHOOL

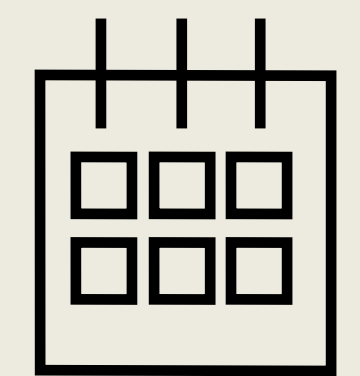


## SCHOOL

ProEd Global School is a world-class international school in Bali that offers diverse educational opportunities for primary and high school students (ages 4-19). ProEd school also caters to neurotypical students and those with additional needs.



**1KM / 5MIN  
TO ECOVERSE**



**OPEN  
AUGUST 2023**

# WHATS NEXT?

1

**VIEW OUR PRODUCT AND  
LIFESTYLE BROCHURE &  
PRICE LIST**

2

**VISIT OUR SHOW UNIT  
AND NUANU CITY OR  
SCHEDULE A VIRTUAL  
TOUR**

3

**RESERVE AND REQUEST  
OUR COMPLETE DUE-  
DILIGENCE PACK**

