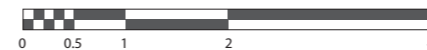
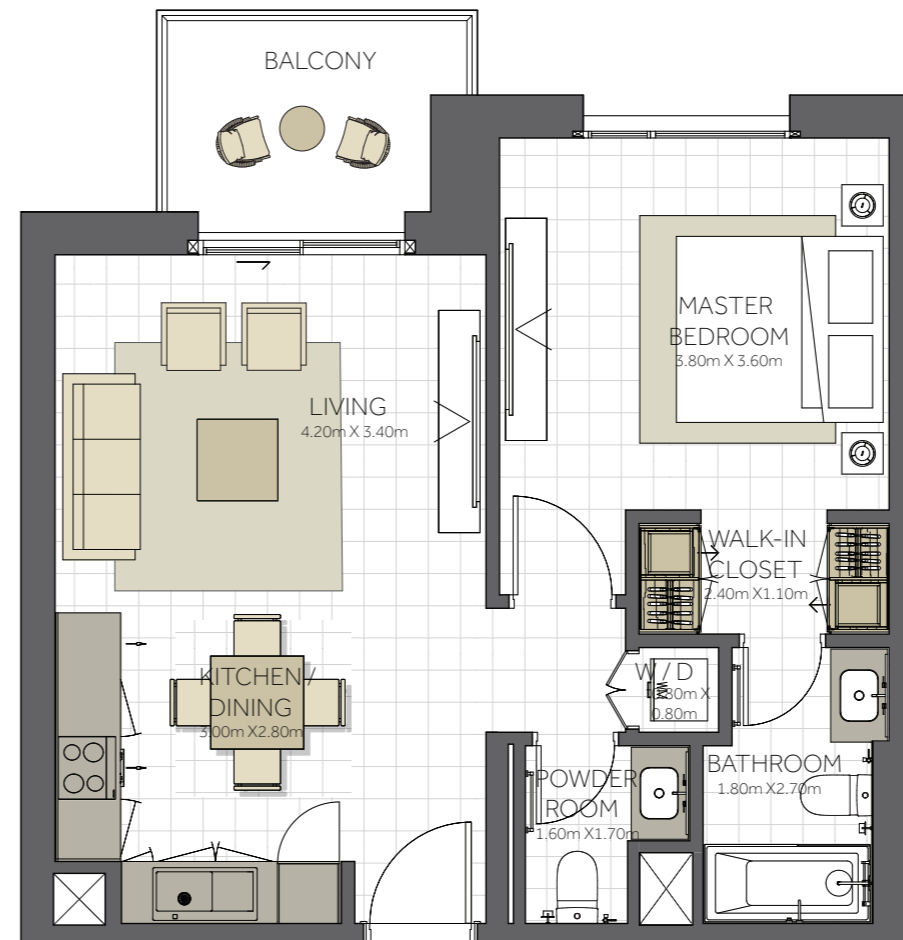




TOPAZ RESIDENCES

BUILDING	TOPAZ - 1BR
1 BEDROOM	TYPE A
UNIT NO.	106, 107, 108, 109, 110, 206, 207, 208, 209, 210, 806, 807, 808, 809, 810, 906, 907, 908, 909, 910, 1006, 1007, 1008, 1009, 1010, 1108, 1109
SUITE AREA.	61m² (678 sq.ft)
BALCONY AREA.	6 m² (64sq.ft)
TOTAL AREA	69 m² (742 sq.ft)



Level 01 - 10



Level 11



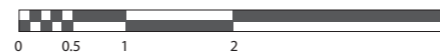
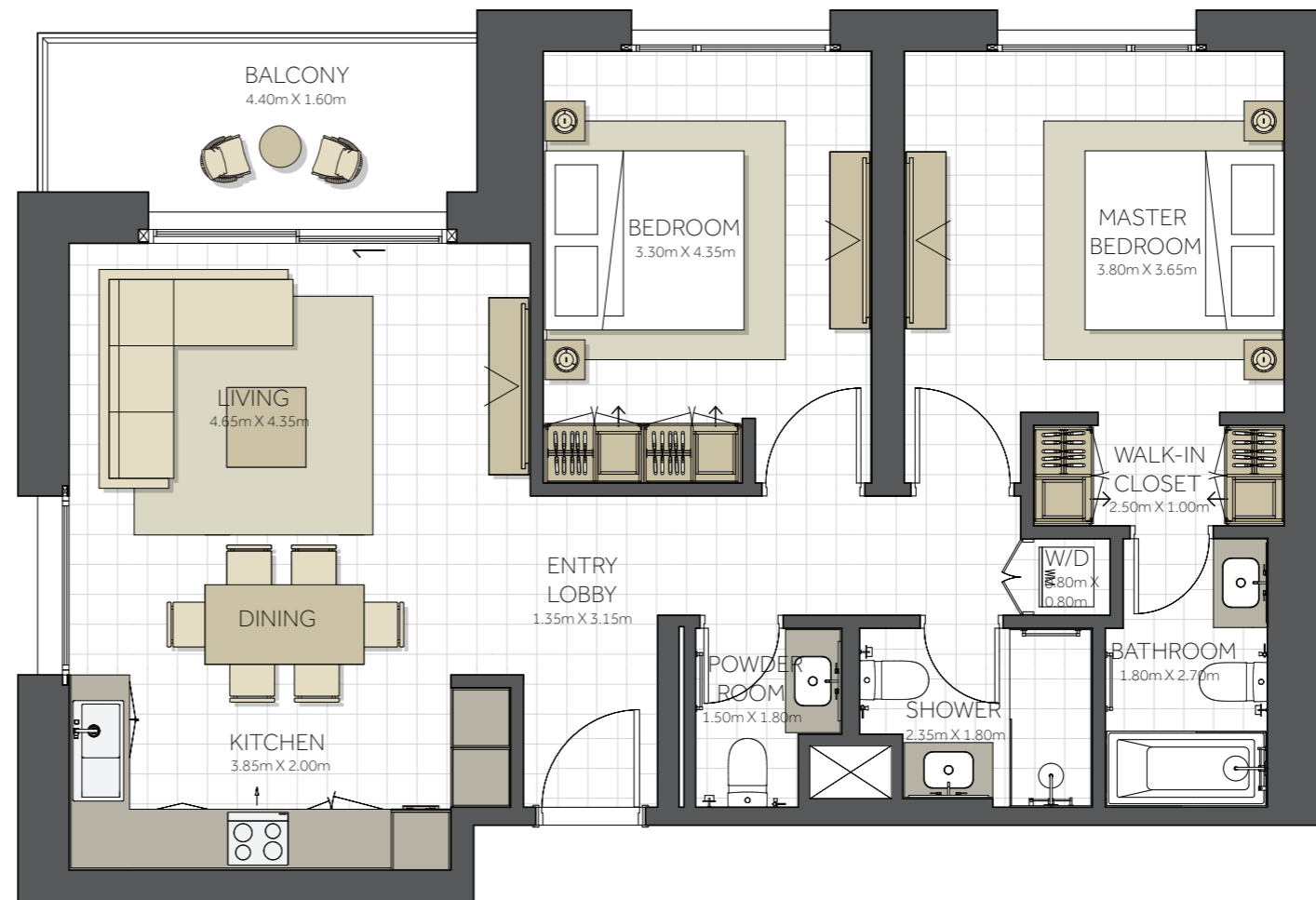
Disclaimer:

1. All room dimensions are measured to structural elements and exclude all finishes and construction tolerances. 2. All dimensions have been provided by our consultant architects. 3. All materials, dimensions and drawings are approximate. Information is subject to change without notice. 4. Actual suite area may vary from the stated area. Drawings not to scale. The developer reserves the right to make revisions. 5. Calculation of suite area is measured as the area bounded by the centre line of the demising or partition walls separating one unit from another unit, the exterior face of all exterior walls, and the exterior face of the corridor wall enclosing the adjoining unit. 6. Calculation of balcony area is measured as the area bounded by the centre line of the demising or partition walls separating one unit from another unit, the outmost face of the enclosing guard and the external face of the unit adjoining the balcony. 7. The units are measured at typical floor in the building. Columns may vary in size depending on the floor level.

توباز

TOPAZ RESIDENCES

BUILDING	TOPAZ - 2BR
2 BEDROOM	TYPE A
UNIT NO.	211, 311, 411, 511, 611, 711, 811, 911, 1011
SUITE AREA.	97m ² (1.044 sq.ft)
BALCONY AREA.	8 m ² (86 sq.ft)
TOTAL AREA	105 m ² (1.130 sq.ft)



Level 02 - 10



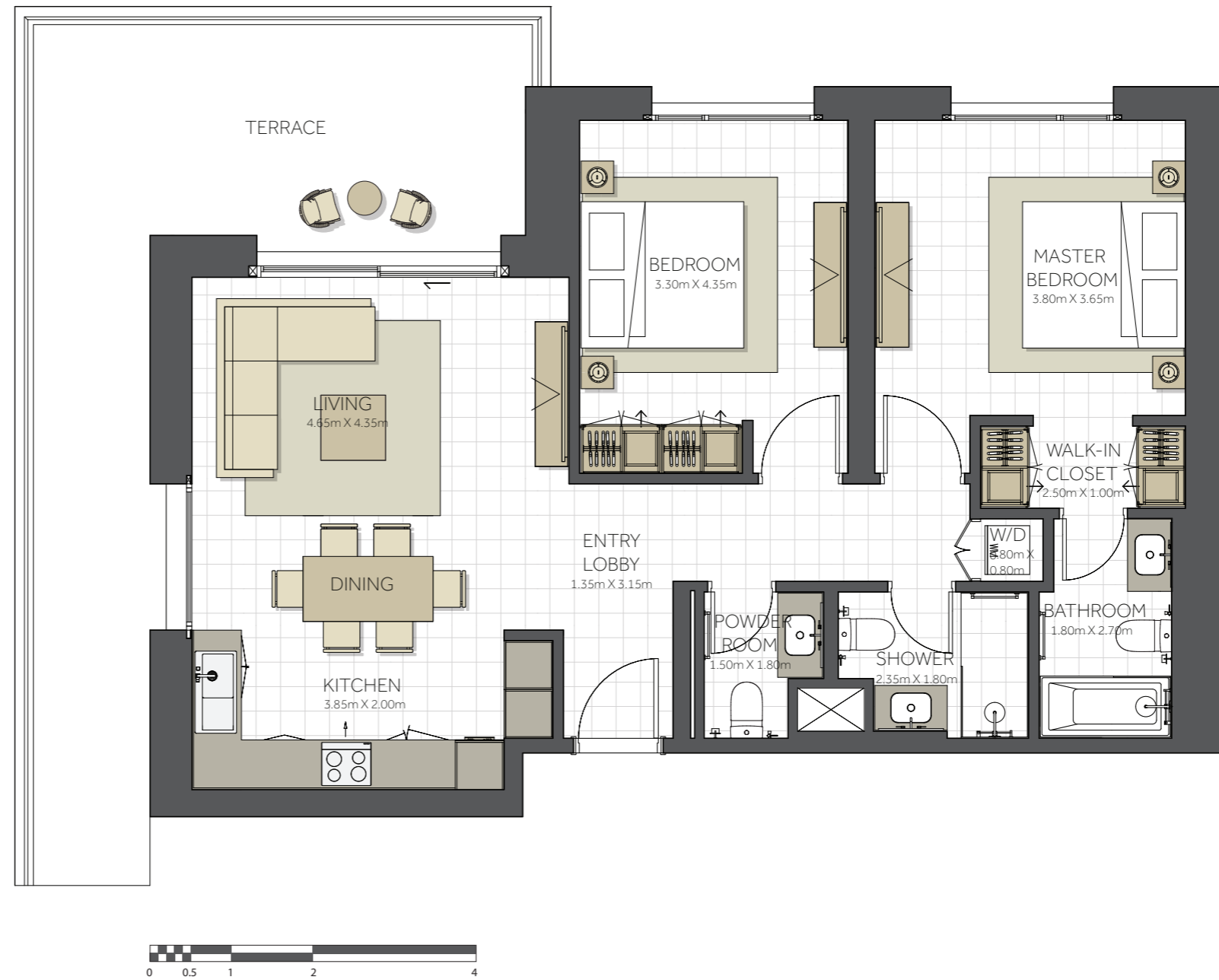
Disclaimer:

1. All room dimensions are measured to structural elements and exclude all finishes and construction tolerances. 2. All dimensions have been provided by our consultant architects. 3. All materials, dimensions and drawings are approximate. Information is subject to change without notice. 4. Actual suite area may vary from the stated area. Drawings not to scale. The developer reserves the right to make revisions. 5. Calculation of suite area is measured as the area bounded by the centre line of the demising or partition walls separating one unit from another unit, the exterior face of all exterior walls, and the exterior face of the corridor wall enclosing the adjoining unit. 6. Calculation of balcony area is measured as the area bounded by the centre line of the demising or partition walls separating one unit from another unit, the outmost face of the enclosing guard and the external face of the unit adjoining the balcony. 7. The units are measured at typical floor in the building. Columns may vary in size depending on the floor level.

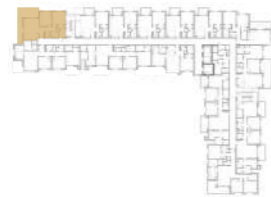
توباز

TOPAZ RESIDENCES

BUILDING	TOPAZ - 2BR
2 BEDROOM	TYPE A1
UNIT NO.	111
SUITE AREA.	97m ² (1.044 sq.ft)
TERRACE AREA.	28 m ² (301 sq.ft)
TOTAL AREA	125 m ² (1.345 sq.ft)



Level 01



Disclaimer:

1. All room dimensions are measured to structural elements and exclude all finishes and construction tolerances. 2. All dimensions have been provided by our consultant architects. 3. All materials, dimensions and drawings are approximate. Information is subject to change without notice. 4. Actual suite area may vary from the stated area. Drawings not to scale. The developer reserves the right to make revisions. 5. Calculation of suite area is measured as the area bounded by the centre line of the demising or partition walls separating one unit from another unit, the exterior face of all exterior walls, and the exterior face of the corridor wall enclosing the adjoining unit. 6. Calculation of balcony area is measured as the area bounded by the centre line of the demising or partition walls separating one unit from another unit, the outmost face of the enclosing guard and the external face of the unit adjoining the balcony. 7. The units are measured at typical floor in the building. Columns may vary in size depending on the floor level.





TOPAZ RESIDENCES

BUILDING	TOPAZ - 2BR
2 BEDROOM	TYPE B
UNIT NO.	105, 205, 805, 905, 1005, 1105, 1204, 1304
SUITE AREA.	100m² (1.076 sq.ft)
BALCONY AREA.	12 m² (140 sq.ft)
TOTAL AREA	112m² (1.184 sq.ft)

Level 01 - 10



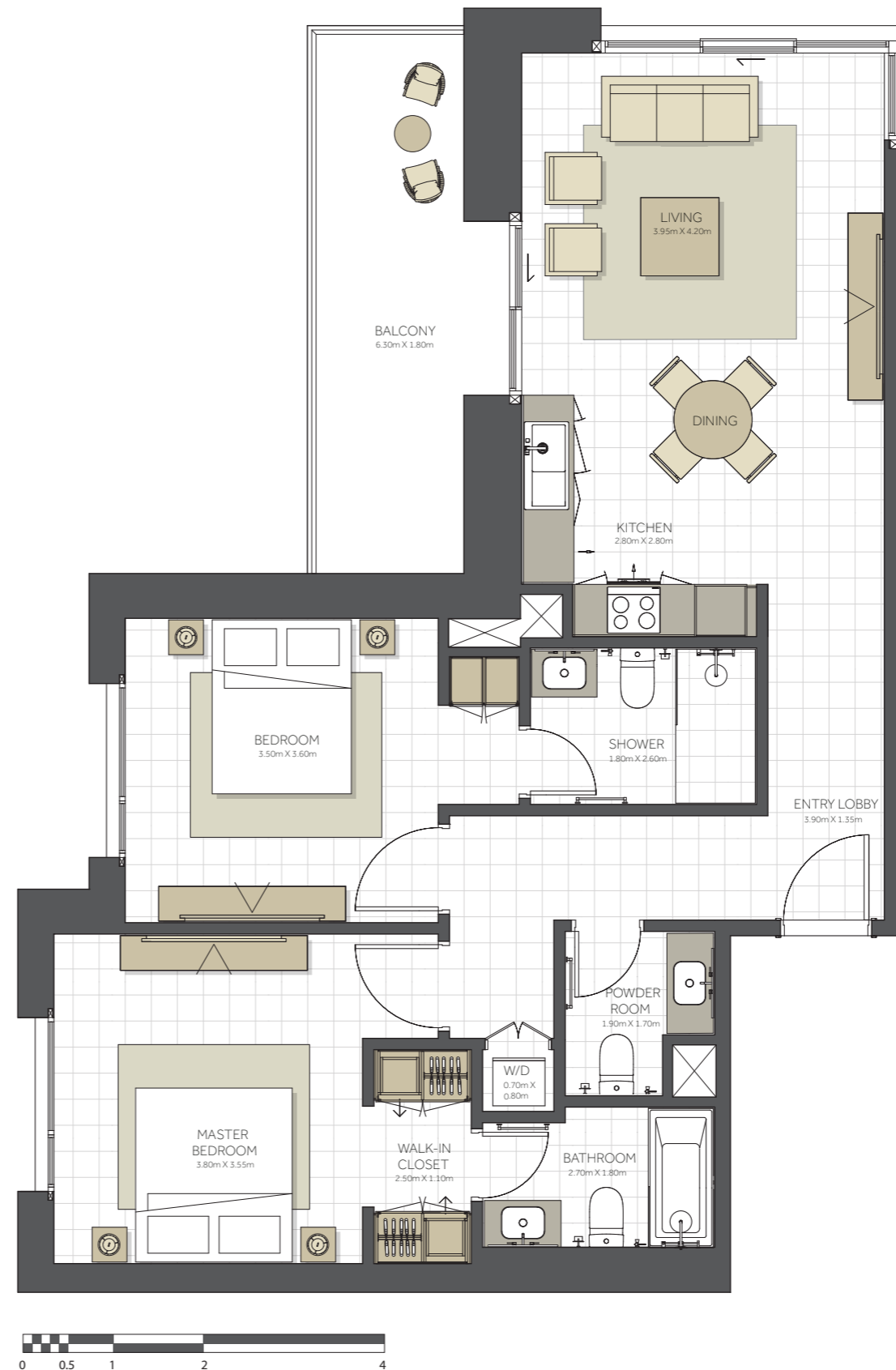
Level 11



Level 12



Level 13



جزيرة مريم
MARYAM ISLAND
SHARJAH

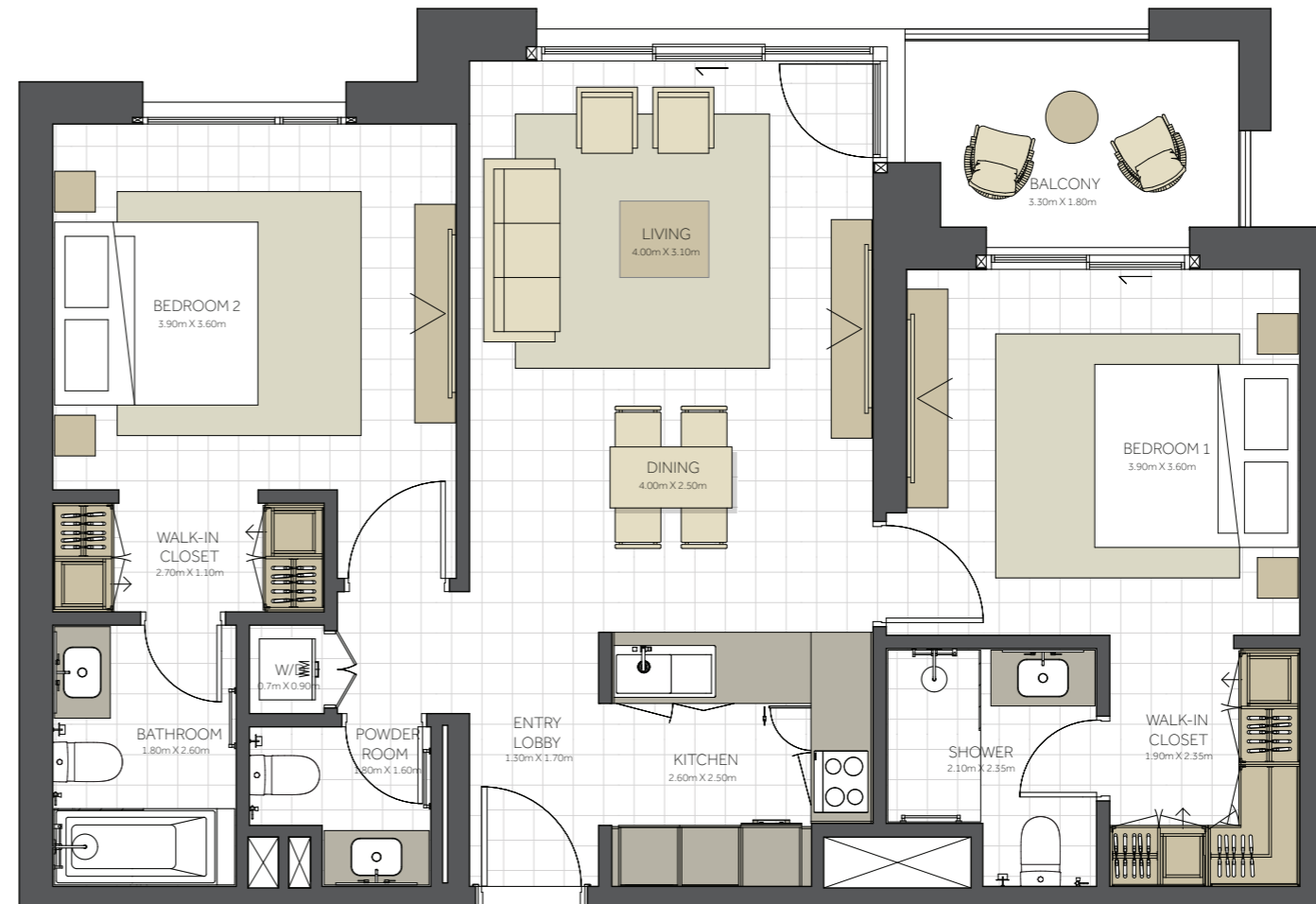
Disclaimer:

1. All room dimensions are measured to structural elements and exclude all finishes and construction tolerances. 2. All dimensions have been provided by our consultant architects. 3. All materials, dimensions and drawings are approximate. Information is subject to change without notice. 4. Actual suite area may vary from the stated area. Drawings not to scale. The developer reserves the right to make revisions. 5. Calculation of suite area is measured as the area bounded by the centre line of the demising or partition walls separating one unit from another unit, the exterior face of all exterior walls, and the exterior face of the corridor wall enclosing the adjoining unit. 6. Calculation of balcony area is measured as the area bounded by the centre line of the demising or partition walls separating one unit from another unit, the outmost face of the enclosing guard and the external face of the unit adjoining the balcony. 7. The units are measured at typical floor in the building. Columns may vary in size depending on the floor level.



TOPAZ RESIDENCES

BUILDING	TOPAZ - 2BR
2 BEDROOM	TYPE C
UNIT NO.	214, 314, 414, 514, 614, 714, 814, 914, 1014, 1112, 1210, 1310
SUITE AREA.	98m² (1.054sq.ft)
BALCONY AREA.	6 m² (64sq.ft)
TOTAL AREA	104m² (1.119 sq.ft)



Level 02 - 10



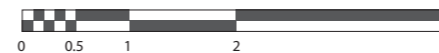
Level 11



Level 12



Level 13



جزيرة مريم
MARYAM ISLAND
SHARJAH

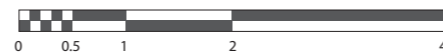
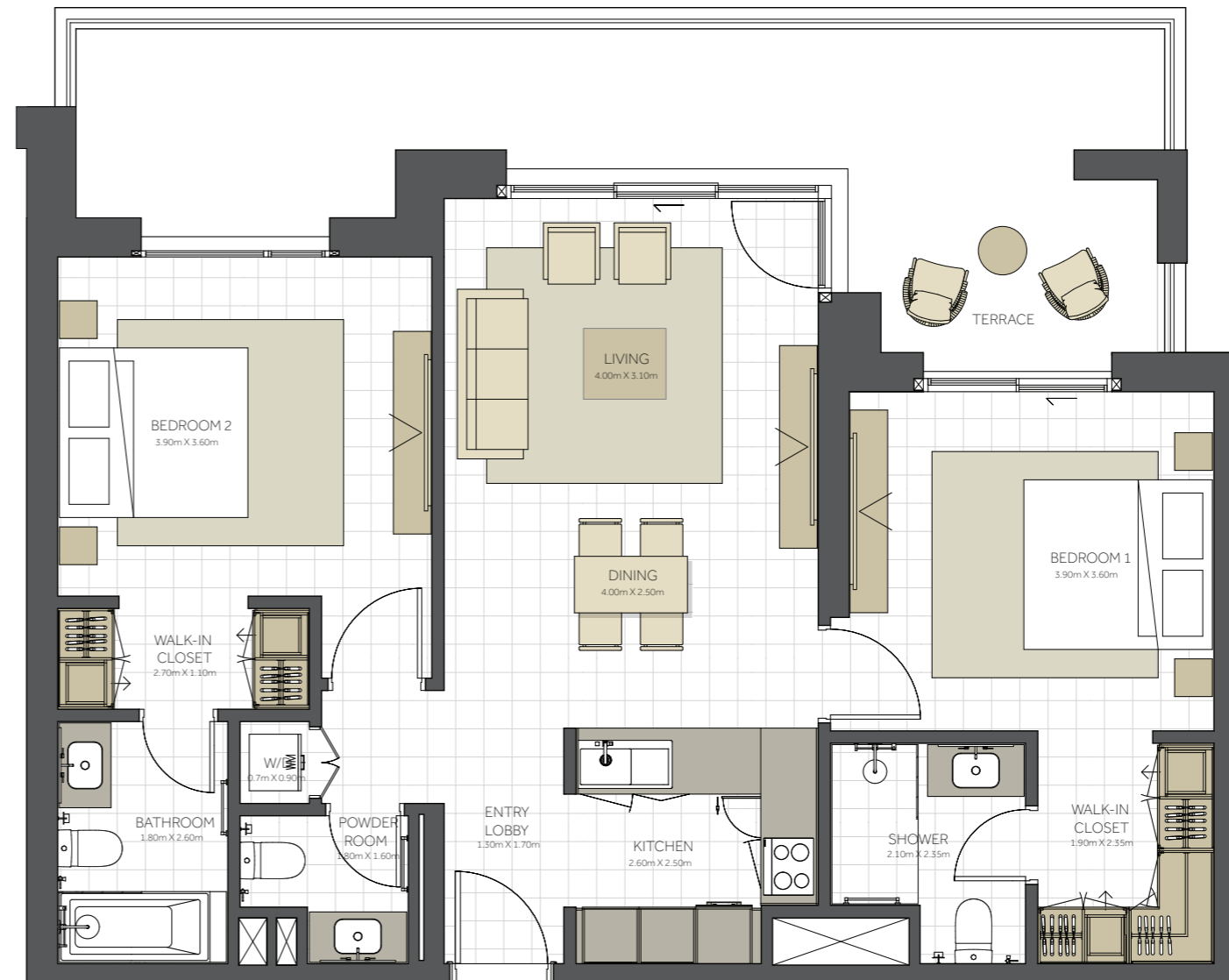
Disclaimer:

1. All room dimensions are measured to structural elements and exclude all finishes and construction tolerances. 2. All dimensions have been provided by our consultant architects. 3. All materials, dimensions and drawings are approximate. Information is subject to change without notice. 4. Actual suite area may vary from the stated area. Drawings not to scale. The developer reserves the right to make revisions. 5. Calculation of suite area is measured as the area bounded by the centre line of the demising or partition walls separating one unit from another unit, the exterior face of all exterior walls, and the exterior face of the corridor wall enclosing the adjoining unit. 6. Calculation of balcony area is measured as the area bounded by the centre line of the demising or partition walls separating one unit from another unit, the outmost face of the enclosing guard and the external face of the unit adjoining the balcony. 7. The units are measured at typical floor in the building. Columns may vary in size depending on the floor level.

توباز

TOPAZ RESIDENCES

BUILDING	TOPAZ - 2BR
2 BEDROOM	TYPE C1
UNIT NO.	114
SUITE AREA.	98m ² (1.054sq.ft)
TERRACE AREA.	27 m ² (290 sq.ft)
TOTAL AREA	125m ² (1.345 sq.ft)



Level 01



Disclaimer:

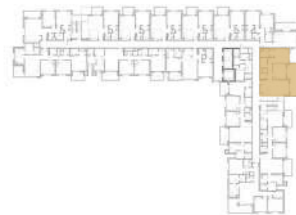
1. All room dimensions are measured to structural elements and exclude all finishes and construction tolerances. 2. All dimensions have been provided by our consultant architects. 3. All materials, dimensions and drawings are approximate. Information is subject to change without notice. 4. Actual suite area may vary from the stated area. Drawings not to scale. The developer reserves the right to make revisions. 5. Calculation of suite area is measured as the area bounded by the centre line of the demising or partition walls separating one unit from another unit, the exterior face of all exterior walls, and the exterior face of the corridor wall enclosing the adjoining unit. 6. Calculation of balcony area is measured as the area bounded by the centre line of the demising or partition walls separating one unit from another unit, the outmost face of the enclosing guard and the external face of the unit adjoining the balcony. 7. The units are measured at typical floor in the building. Columns may vary in size depending on the floor level.



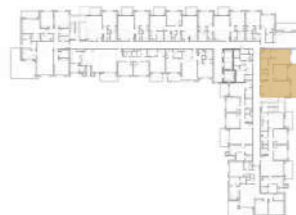
TOPAZ RESIDENCES

BUILDING	TOPAZ - 2BR
2 BEDROOM	TYPE D
UNIT NO.	104, 204, 304, 404, 504, 604, 704, 804, 904, 1004, 1104, 1203, 1303
SUITE AREA.	98m² (1.054 sq.ft)
BALCONY AREA.	22 m² (236 sq.ft)
TOTAL AREA	120 m² (1.291 sq.ft)

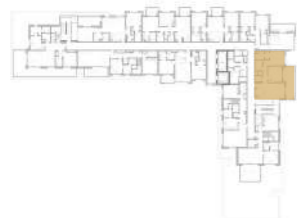
Level 01 - 10



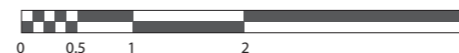
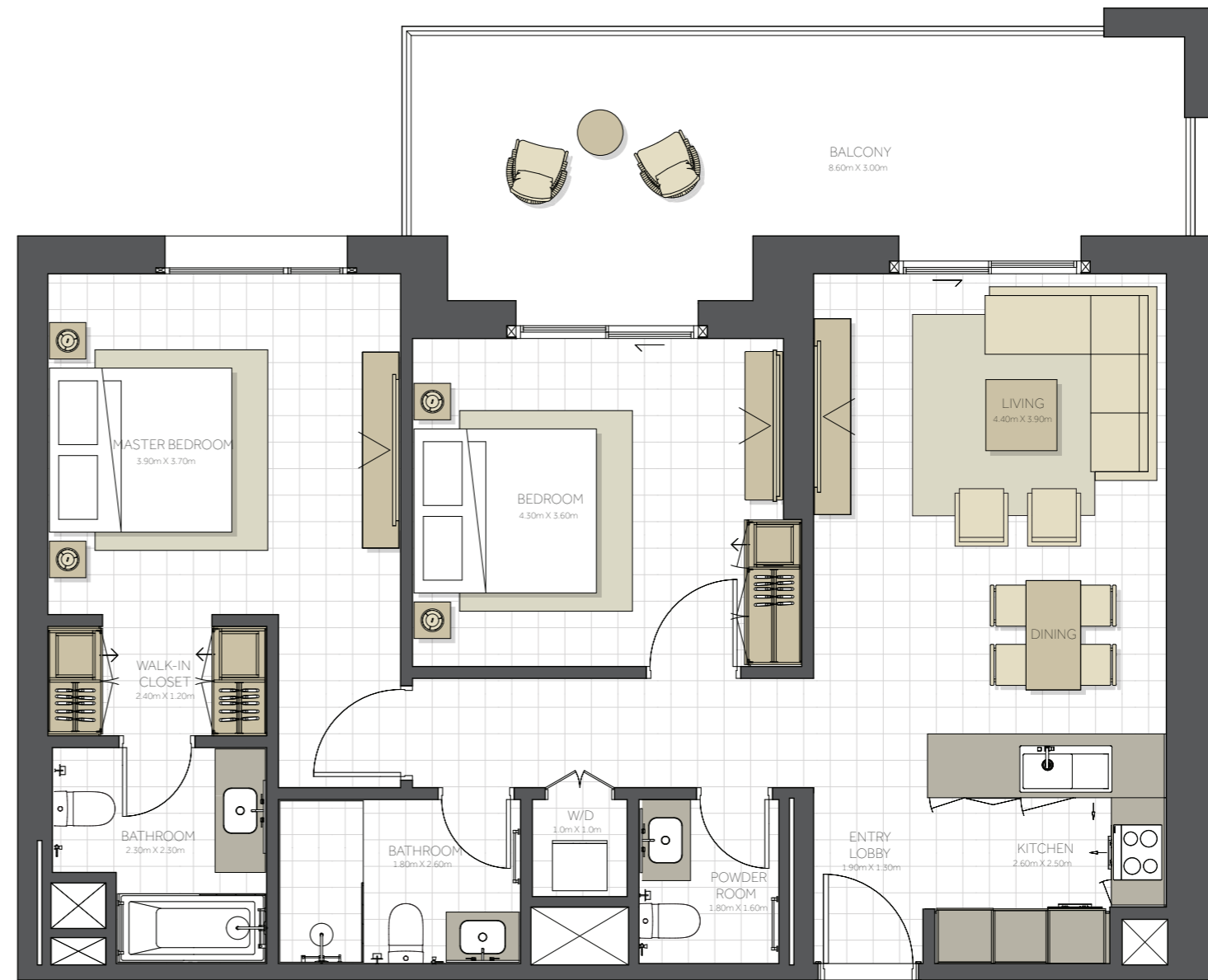
Level 11



Level 12



Level 13



EAGLE HILLS
ABU DHABI



جزيرة مريم
MARYAM ISLAND
SHARJAH

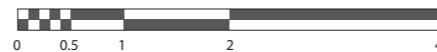
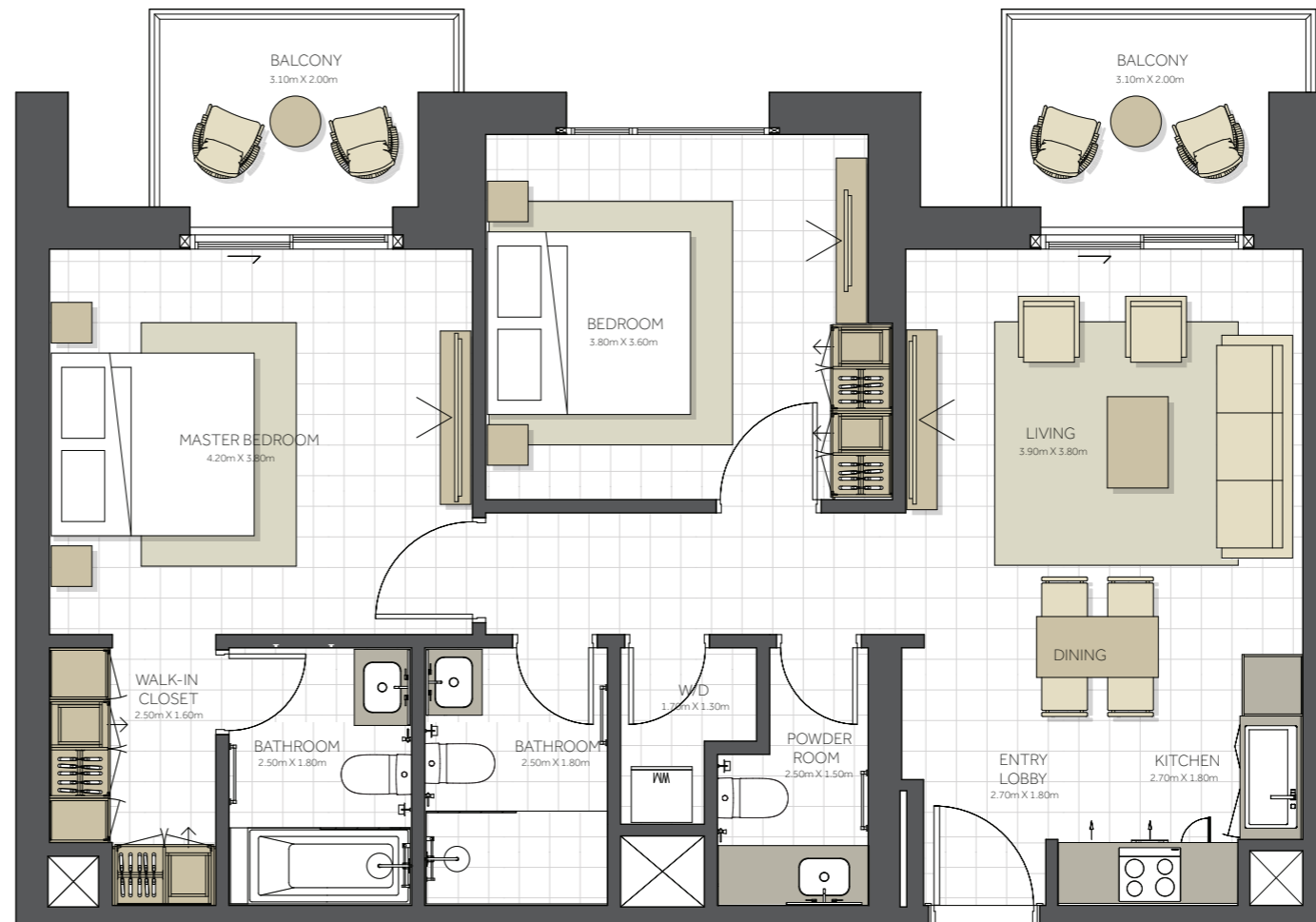
Disclaimer:

1. All room dimensions are measured to structural elements and exclude all finishes and construction tolerances. 2. All dimensions have been provided by our consultant architects. 3. All materials, dimensions and drawings are approximate. Information is subject to change without notice. 4. Actual suite area may vary from the stated area. Drawings not to scale. The developer reserves the right to make revisions. 5. Calculation of suite area is measured as the area bounded by the centre line of the demising or partition walls separating one unit from another unit, the exterior face of all exterior walls, and the exterior face of the corridor wall enclosing the adjoining unit. 6. Calculation of balcony area is measured as the area bounded by the centre line of the demising or partition walls separating one unit from another unit, the outmost face of the enclosing guard and the external face of the unit adjoining the balcony. 7. The units are measured at typical floor in the building. Columns may vary in size depending on the floor level.



TOPAZ RESIDENCES

BUILDING	TOPAZ - 2BR
2 BEDROOM	TYPE E
UNIT NO.	1107, 1206, 1306
SUITE AREA.	94m² (1.011 sq.ft)
BALCONY AREA.	12 m² (129 sq.ft)
TOTAL AREA	106m² (1.140 sq.ft)



Level 11



Level 12



Level 13



جزيرة مريم
MARYAM ISLAND
SHARJAH

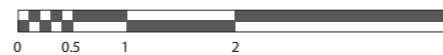
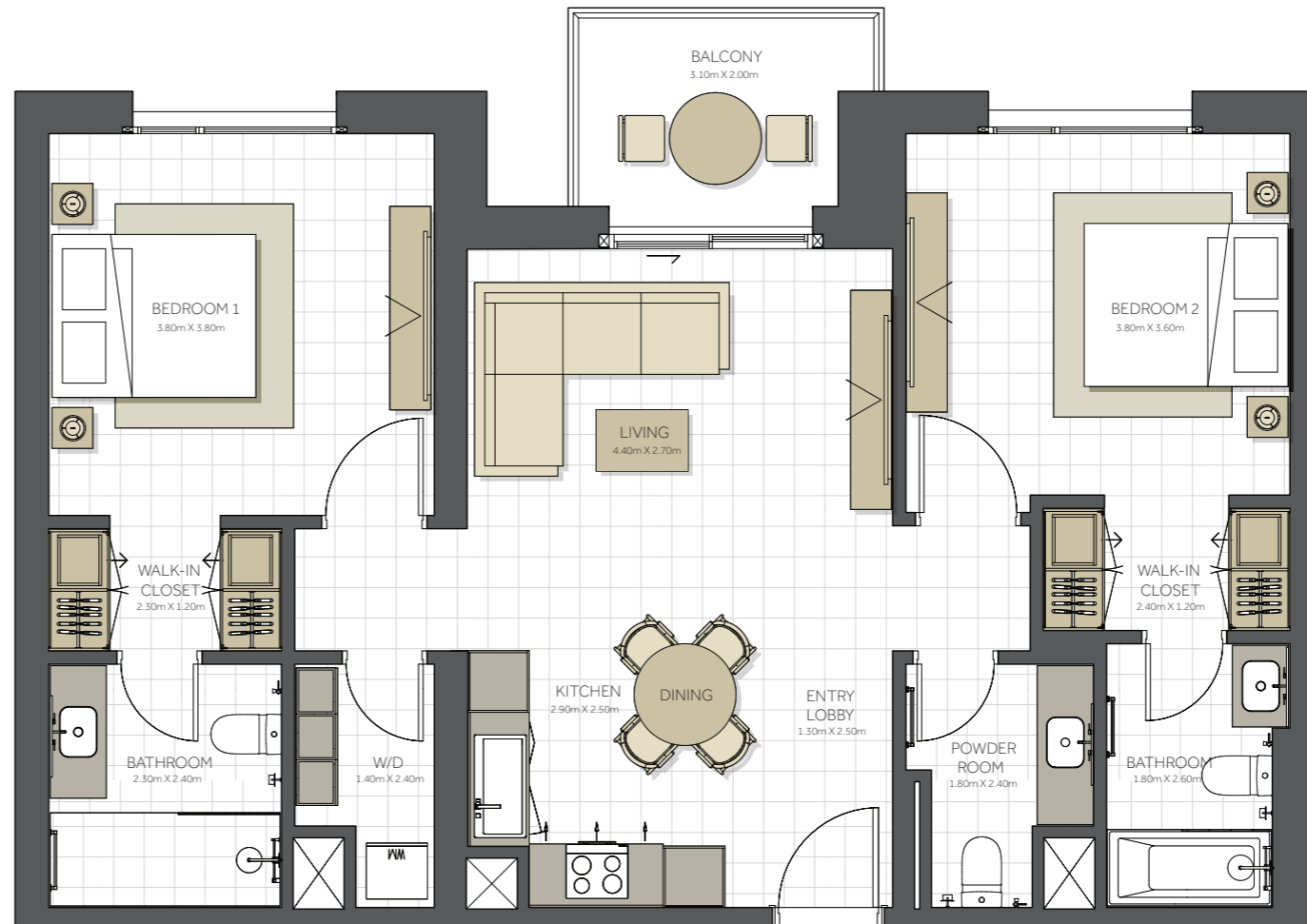
Disclaimer:

1. All room dimensions are measured to structural elements and exclude all finishes and construction tolerances. 2. All dimensions have been provided by our consultant architects. 3. All materials, dimensions and drawings are approximate. Information is subject to change without notice. 4. Actual suite area may vary from the stated area. Drawings not to scale. The developer reserves the right to make revisions. 5. Calculation of suite area is measured as the area bounded by the centre line of the demising or partition walls separating one unit from another unit, the exterior face of all exterior walls, and the exterior face of the corridor wall enclosing the adjoining unit. 6. Calculation of balcony area is measured as the area bounded by the centre line of the demising or partition walls separating one unit from another unit, the outmost face of the enclosing guard and the external face of the unit adjoining the balcony. 7. The units are measured at typical floor in the building. Columns may vary in size depending on the floor level.



TOPAZ RESIDENCES

BUILDING	TOPAZ - 2BR
2 BEDROOM	TYPE F
UNIT NO.	1106, 1205, 1305
SUITE AREA.	96m² (1.033 sq.ft)
BALCONY AREA.	6m² (64 sq.ft)
TOTAL AREA	102m² (1.097 sq.ft)



Level 11



Level 12



Level 13



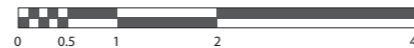
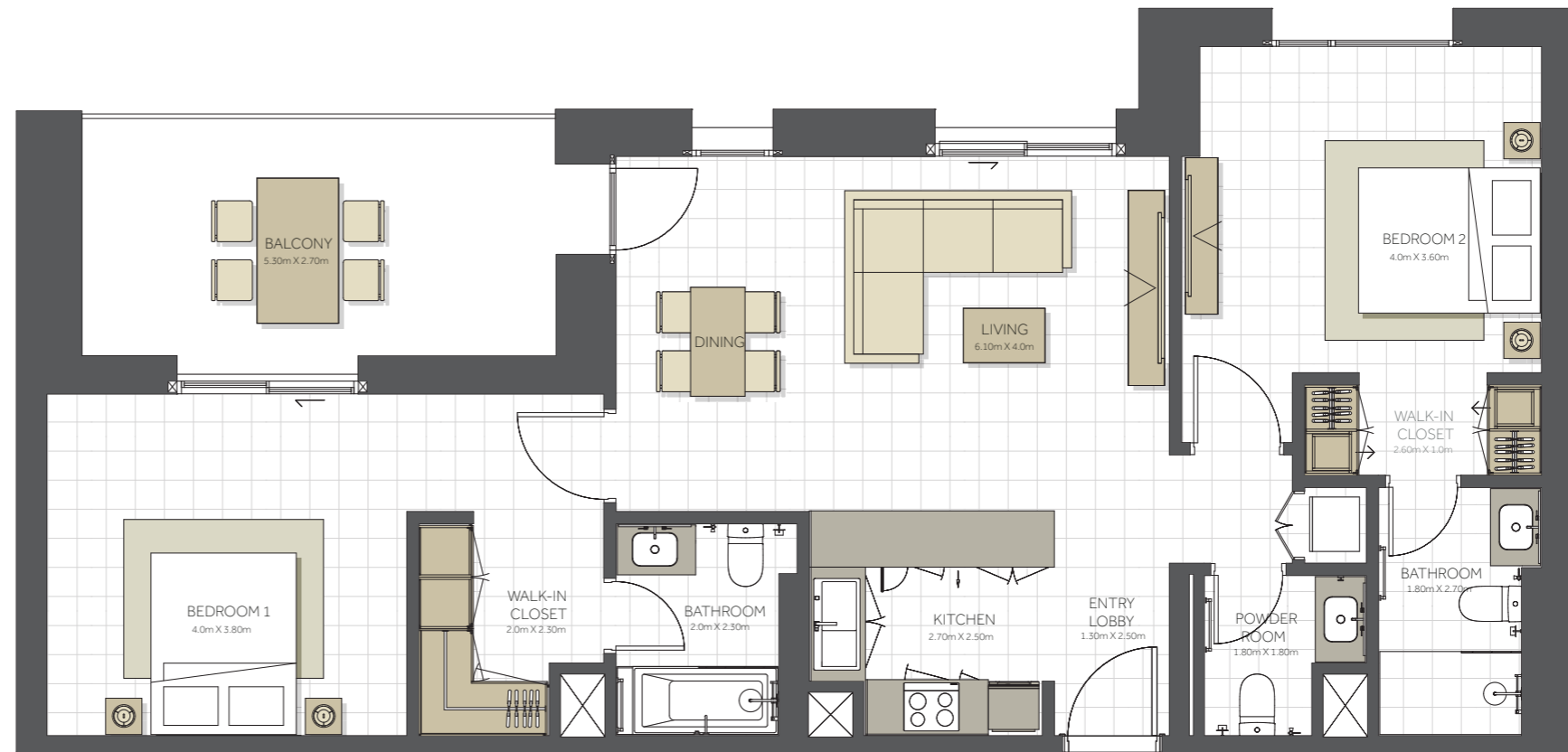
Disclaimer:

1. All room dimensions are measured to structural elements and exclude all finishes and construction tolerances. 2. All dimensions have been provided by our consultant architects. 3. All materials, dimensions and drawings are approximate. Information is subject to change without notice. 4. Actual suite area may vary from the stated area. Drawings not to scale. The developer reserves the right to make revisions. 5. Calculation of suite area is measured as the area bounded by the centre line of the demising or partition walls separating one unit from another unit, the exterior face of all exterior walls, and the exterior face of the corridor wall enclosing the adjoining unit. 6. Calculation of balcony area is measured as the area bounded by the centre line of the demising or partition walls separating one unit from another unit, the outmost face of the enclosing guard and the external face of the unit adjoining the balcony. 7. The units are measured at typical floor in the building. Columns may vary in size depending on the floor level.



TOPAZ RESIDENCES

BUILDING	TOPAZ - 2BR
2 BEDROOM	TYPE G
UNIT NO.	1207, 1307
SUITE AREA.	105m² (1.130 sq.ft)
BALCONY AREA.	15 m² (161 sq.ft)
TOTAL AREA	120 m² (1.291 sq.ft)



Level 12



Level 13



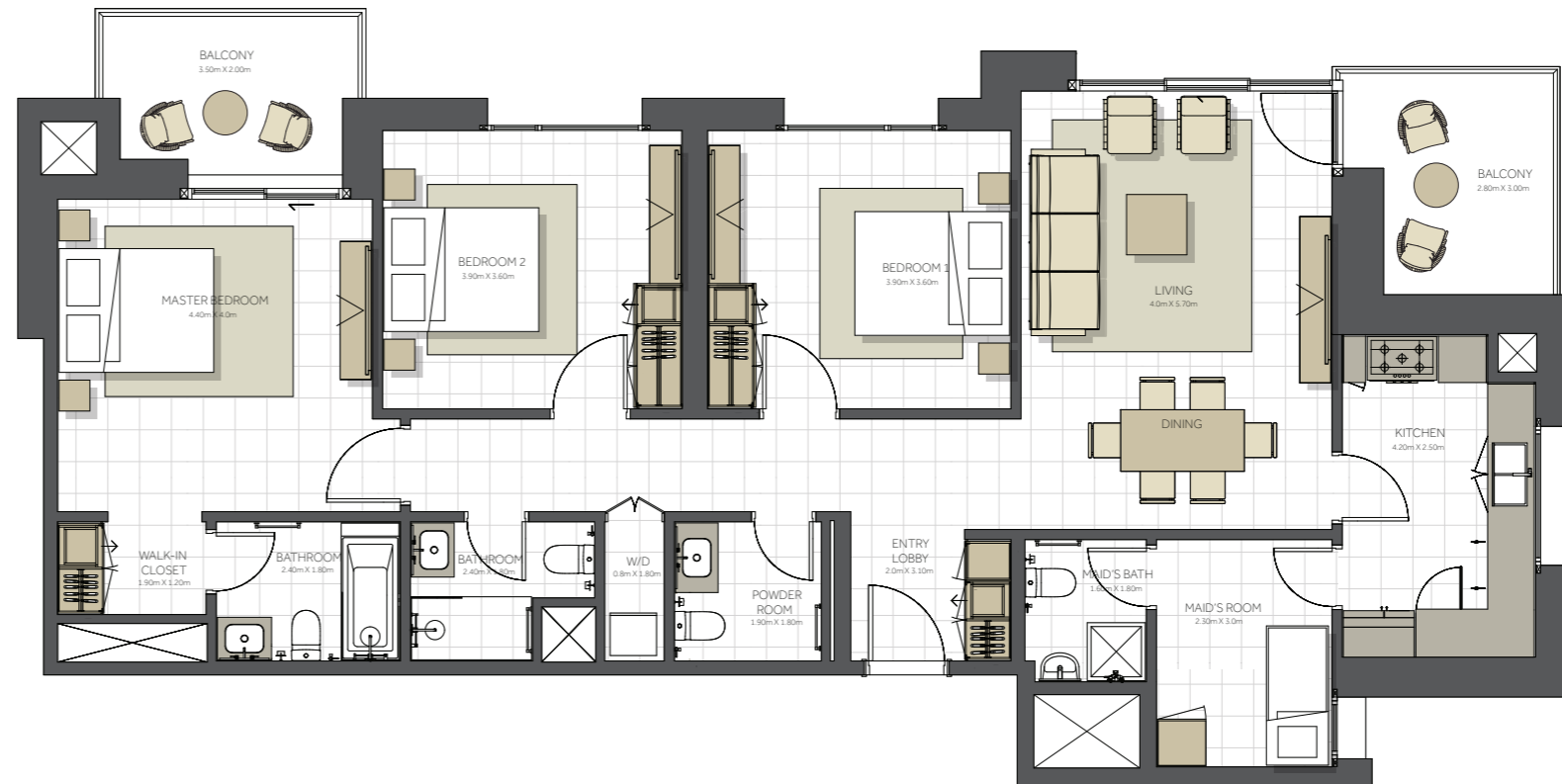
Disclaimer:

1. All room dimensions are measured to structural elements and exclude all finishes and construction tolerances. 2. All dimensions have been provided by our consultant architects. 3. All materials, dimensions and drawings are approximate. Information is subject to change without notice. 4. Actual suite area may vary from the stated area. Drawings not to scale. The developer reserves the right to make revisions. 5. Calculation of suite area is measured as the area bounded by the centre line of the demising or partition walls separating one unit from another unit, the exterior face of all exterior walls, and the exterior face of the corridor wall enclosing the adjoining unit. 6. Calculation of balcony area is measured as the area bounded by the centre line of the demising or partition walls separating one unit from another unit, the outmost face of the enclosing guard and the external face of the unit adjoining the balcony. 7. The units are measured at typical floor in the building. Columns may vary in size depending on the floor level.



TOPAZ RESIDENCES

BUILDING	TOPAZ - 3BR
3 BEDROOM	TYPE A
UNIT NO.	212, 312, 412, 512, 612, 712, 812, 912, 1012
SUITE AREA.	140m² (1.507 sq.ft)
BALCONY AREA.	14 m² (150 sq.ft)
TOTAL AREA	154 m² (1.657 sq.ft)



Level 02 - 10



جزيرة مريم
MARYAM ISLAND
SHARJAH

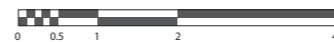
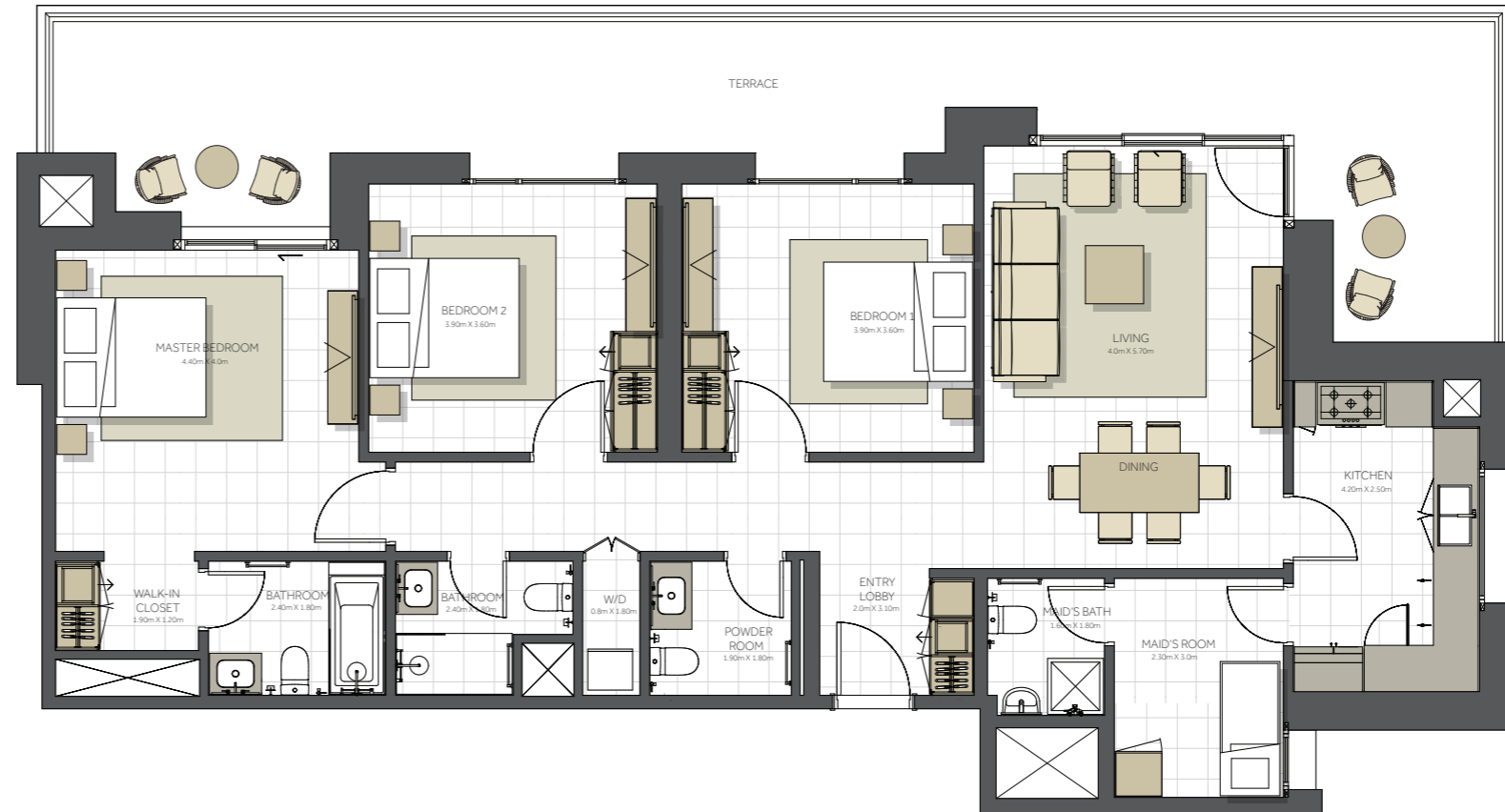
Disclaimer:

1. All room dimensions are measured to structural elements and exclude all finishes and construction tolerances. 2. All dimensions have been provided by our consultant architects. 3. All materials, dimensions and drawings are approximate. Information is subject to change without notice. 4. Actual suite area may vary from the stated area. Drawings not to scale. The developer reserves the right to make revisions. 5. Calculation of suite area is measured as the area bounded by the centre line of the demising or partition walls separating one unit from another unit, the exterior face of all exterior walls, and the exterior face of the corridor wall enclosing the adjoining unit. 6. Calculation of balcony area is measured as the area bounded by the centre line of the demising or partition walls separating one unit from another unit, the outmost face of the enclosing guard and the external face of the unit adjoining the balcony. 7. The units are measured at typical floor in the building. Columns may vary in size depending on the floor level.



TOPAZ RESIDENCES

BUILDING	TOPAZ - 3BR
3 BEDROOM	TYPE A1
UNIT NO.	112
SUITE AREA.	140m² (1.507sq.ft)
TERRACE AREA.	48 m² (517 sq.ft)
TOTAL AREA	188 m² (2.023 sq.ft)



Level 01



Disclaimer:

1. All room dimensions are measured to structural elements and exclude all finishes and construction tolerances. 2. All dimensions have been provided by our consultant architects. 3. All materials, dimensions and drawings are approximate. Information is subject to change without notice. 4. Actual suite area may vary from the stated area. Drawings not to scale. The developer reserves the right to make revisions. 5. Calculation of suite area is measured as the area bounded by the centre line of the demising or partition walls separating one unit from another unit, the exterior face of all exterior walls, and the exterior face of the corridor wall enclosing the adjoining unit. 6. Calculation of balcony area is measured as the area bounded by the centre line of the demising or partition walls separating one unit from another unit, the outmost face of the enclosing guard and the external face of the unit adjoining the balcony. 7. The units are measured at typical floor in the building. Columns may vary in size depending on the floor level.



TOPAZ RESIDENCES

BUILDING	TOPAZ - 3BR
3 BEDROOM	TYPE B
UNIT NO.	202, 302, 402, 502, 602, 702, 802, 902, 1002, 1102
SUITE AREA.	140m² (1.507 sq.ft)
BALCONY AREA.	17 m² (183 sq.ft)
TOTAL AREA	157 m² (1.690 sq.ft)



Level 02 - 10



Level 11



EAGLE
HILLS
ABU DHABI



جزيرة مريم
MARYAM ISLAND
SHARJAH

Disclaimer:

1. All room dimensions are measured to structural elements and exclude all finishes and construction tolerances. 2. All dimensions have been provided by our consultant architects. 3. All materials, dimensions and drawings are approximate. Information is subject to change without notice. 4. Actual suite area may vary from the stated area. Drawings not to scale. The developer reserves the right to make revisions. 5. Calculation of suite area is measured as the area bounded by the centre line of the demising or partition walls separating one unit from another unit, the exterior face of all exterior walls, and the exterior face of the corridor wall enclosing the adjoining unit. 6. Calculation of balcony area is measured as the area bounded by the centre line of the demising or partition walls separating one unit from another unit, the outmost face of the enclosing guard and the external face of the unit adjoining the balcony. 7. The units are measured at typical floor in the building. Columns may vary in size depending on the floor level.



TOPAZ RESIDENCES

BUILDING	TOPAZ - 3BR
3 BEDROOM	TYPE B1
UNIT NO.	102
SUITE AREA.	140m² (1.506 sq.ft)
TERACCE AREA.	52 m² (560 sq.ft)
TOTAL AREA	192 m² (2.067 sq.ft)



Level 01



جزيرة مريم
MARYAM ISLAND
SHARJAH

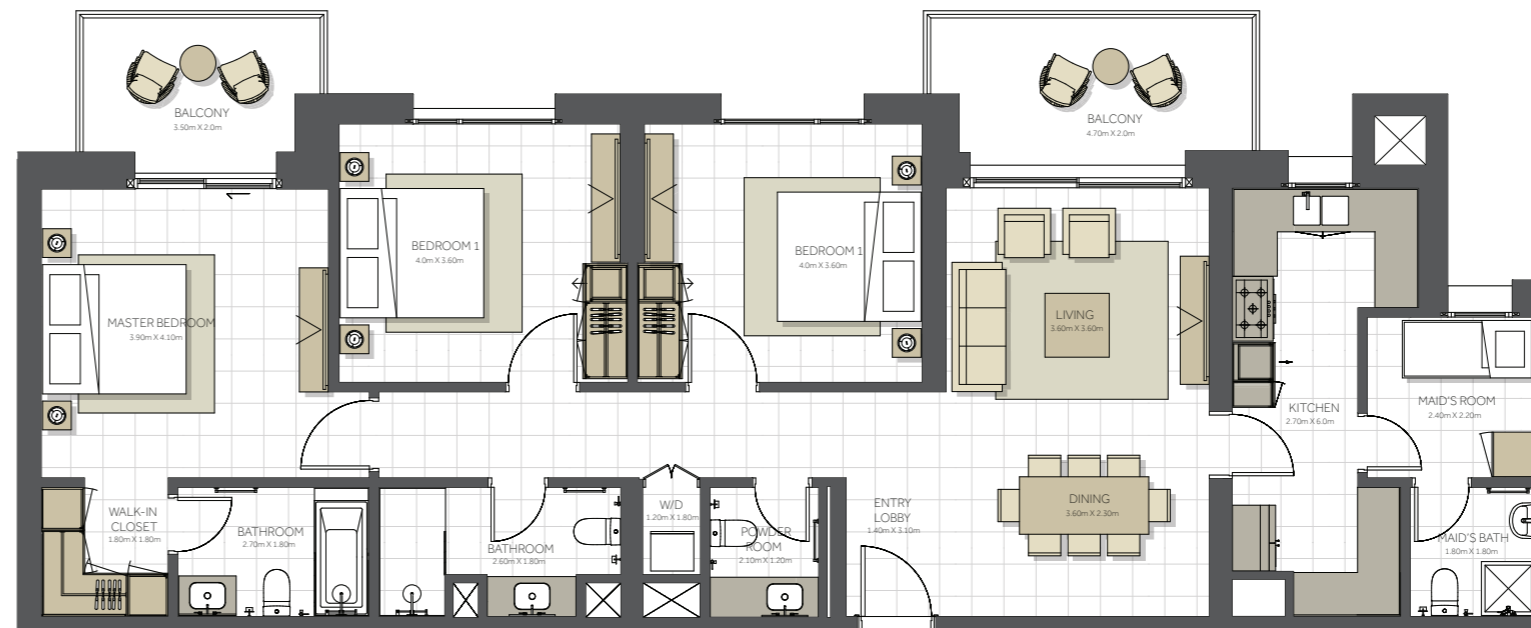
Disclaimer:

1. All room dimensions are measured to structural elements and exclude all finishes and construction tolerances. 2. All dimensions have been provided by our consultant architects. 3. All materials, dimensions and drawings are approximate. Information is subject to change without notice. 4. Actual suite area may vary from the stated area. Drawings not to scale. The developer reserves the right to make revisions. 5. Calculation of suite area is measured as the area bounded by the centre line of the demising or partition walls separating one unit from another unit, the exterior face of all exterior walls, and the exterior face of the corridor wall enclosing the adjoining unit. 6. Calculation of balcony area is measured as the area bounded by the centre line of the demising or partition walls separating one unit from another unit, the outmost face of the enclosing guard and the external face of the unit adjoining the balcony. 7. The units are measured at typical floor in the building. Columns may vary in size depending on the floor level.

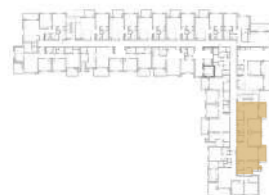


TOPAZ RESIDENCES

BUILDING	TOPAZ - 3BR
3 BEDROOM	TYPE C
UNIT NO.	103, 201, 203, 213, 301, 303, 313, 401, 403, 413, 501, 503, 513, 601, 603, 613, 701, 703, 713, 801, 803, 813, 901, 903, 913, 1001, 1003, 1013, 1101, 1103
SUITE AREA.	137m² (1.475 sq.ft)
BALCONY AREA.	16 m² (172 sq.ft)
TOTAL AREA	153 m² (1.647 sq.ft)



Level 01



Level 02 - 10



Level 11



EAGLE HILLS
ABU DHABI



جزيرة مريم
MARYAM ISLAND
SHARJAH

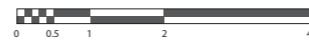
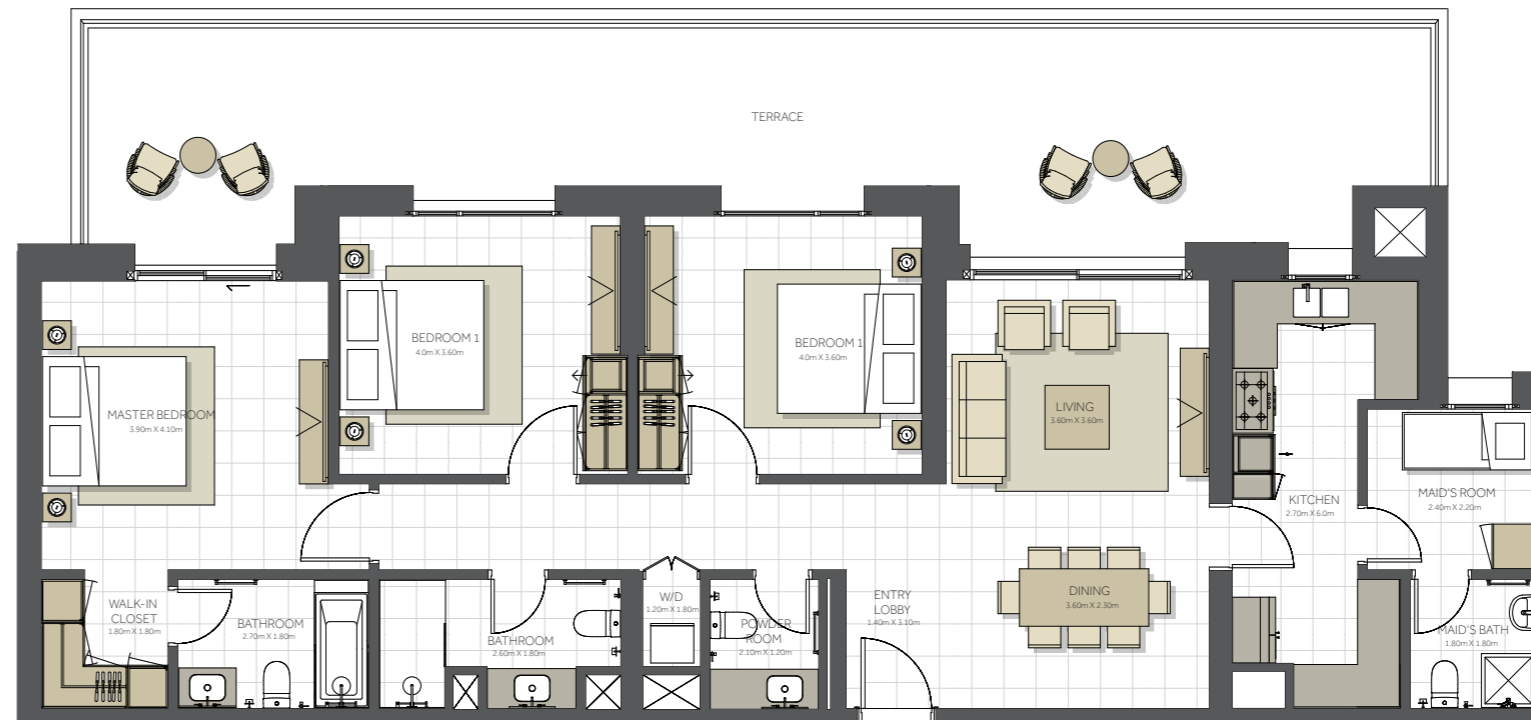
Disclaimer:

1. All room dimensions are measured to structural elements and exclude all finishes and construction tolerances. 2. All dimensions have been provided by our consultant architects. 3. All materials, dimensions and drawings are approximate. Information is subject to change without notice. 4. Actual suite area may vary from the stated area. Drawings not to scale. The developer reserves the right to make revisions. 5. Calculation of suite area is measured as the area bounded by the centre line of the demising or partition walls separating one unit from another unit, the exterior face of all exterior walls, and the exterior face of the corridor wall enclosing the adjoining unit. 6. Calculation of balcony area is measured as the area bounded by the centre line of the demising or partition walls separating one unit from another unit, the outmost face of the enclosing guard and the external face of the unit adjoining the balcony. 7. The units are measured at typical floor in the building. Columns may vary in size depending on the floor level.



TOPAZ RESIDENCES

BUILDING	TOPAZ - 3BR
3 BEDROOM	TYPE C1
UNIT NO.	101
SUITE AREA.	135m² (1.453 sq.ft)
TERRACE AREA.	47 m² (506 sq.ft)
TOTAL AREA	185 m² (1.991 sq.ft)



Level 01



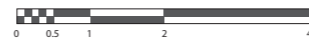
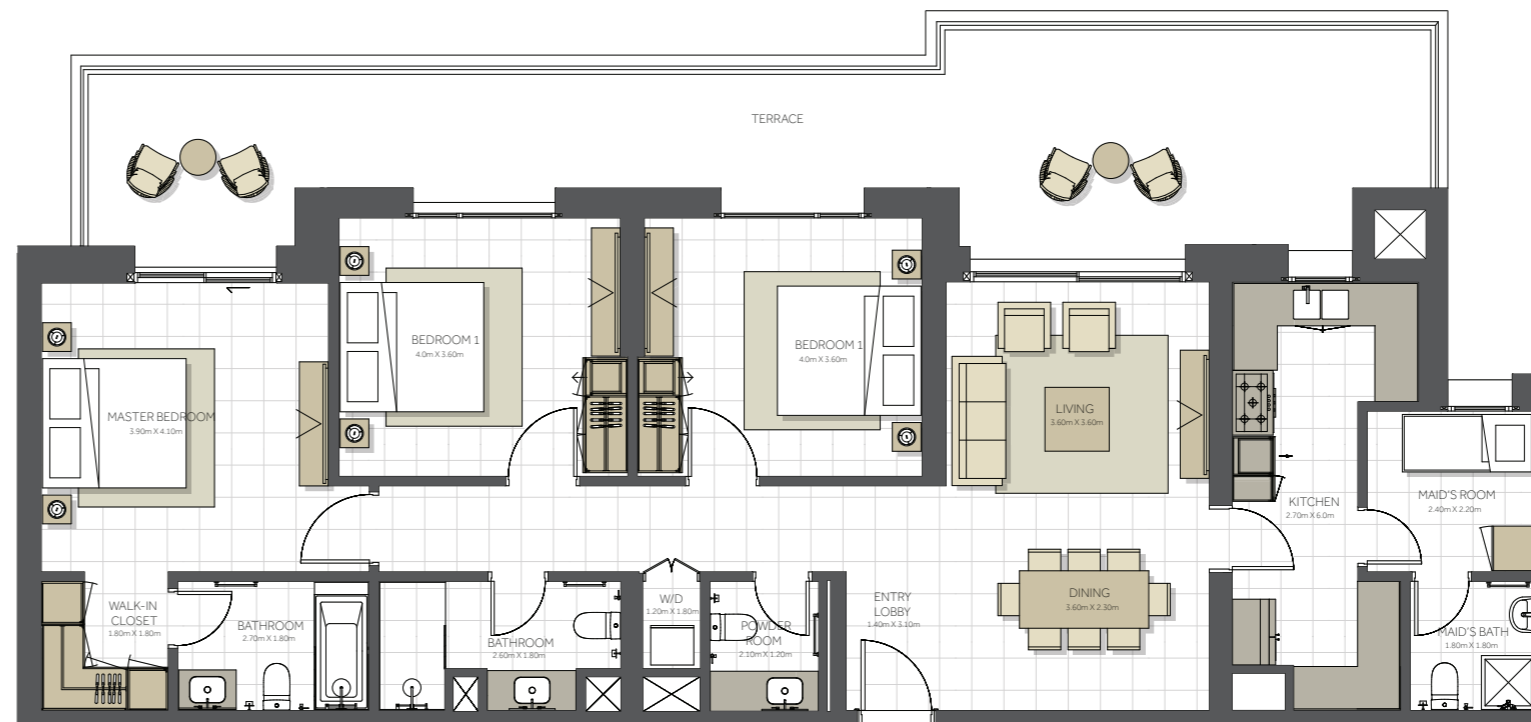
Disclaimer:

1. All room dimensions are measured to structural elements and exclude all finishes and construction tolerances. 2. All dimensions have been provided by our consultant architects. 3. All materials, dimensions and drawings are approximate. Information is subject to change without notice. 4. Actual suite area may vary from the stated area. Drawings not to scale. The developer reserves the right to make revisions. 5. Calculation of suite area is measured as the area bounded by the centre line of the demising or partition walls separating one unit from another unit, the exterior face of all exterior walls, and the exterior face of the corridor wall enclosing the adjoining unit. 6. Calculation of balcony area is measured as the area bounded by the centre line of the demising or partition walls separating one unit from another unit, the outmost face of the enclosing guard and the external face of the unit adjoining the balcony. 7. The units are measured at typical floor in the building. Columns may vary in size depending on the floor level.



TOPAZ RESIDENCES

BUILDING	TOPAZ - 3BR
3 BEDROOM	TYPE C2
UNIT NO.	113
SUITE AREA.	135m² (1.453 sq.ft)
TERRACE AREA.	39 m² (420 sq.ft)
TOTAL AREA	177 m² (1.905 sq.ft)



Level 01



EAGLE HILLS
ABU DHABI



جزيرة مريم
MARYAM ISLAND
SHARJAH

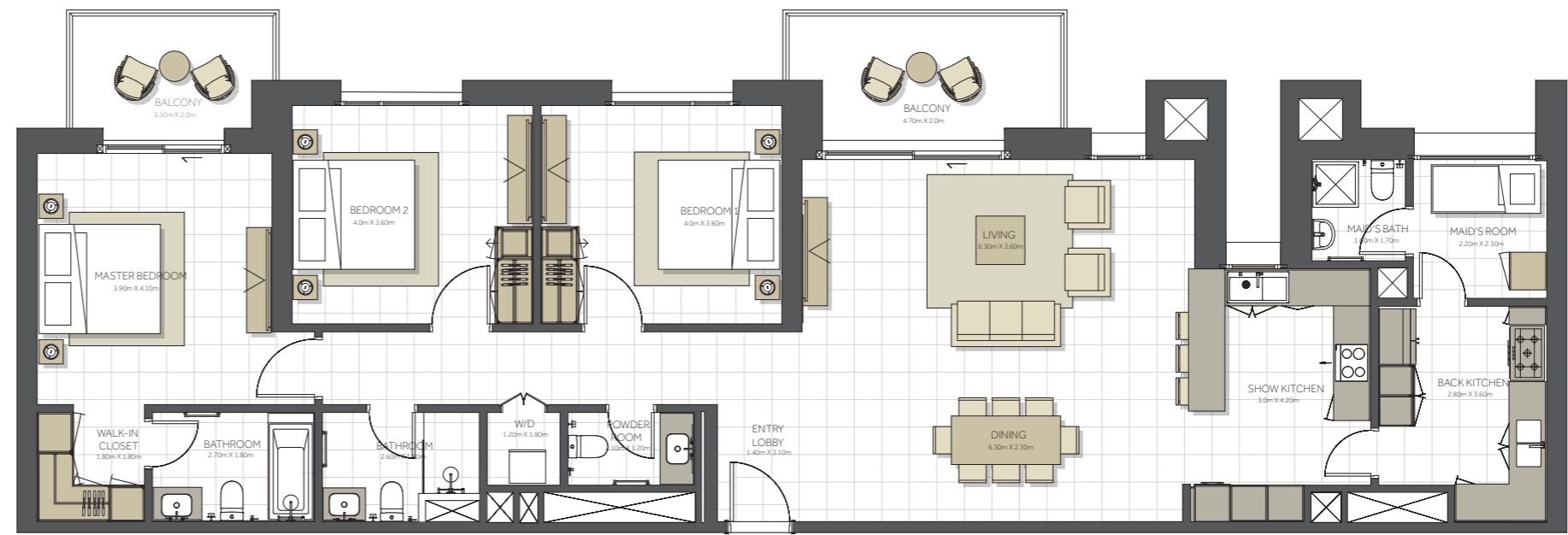
Disclaimer:

1. All room dimensions are measured to structural elements and exclude all finishes and construction tolerances. 2. All dimensions have been provided by our consultant architects. 3. All materials, dimensions and drawings are approximate. Information is subject to change without notice. 4. Actual suite area may vary from the stated area. Drawings not to scale. The developer reserves the right to make revisions. 5. Calculation of suite area is measured as the area bounded by the centre line of the demising or partition walls separating one unit from another unit, the exterior face of all exterior walls, and the exterior face of the corridor wall enclosing the adjoining unit. 6. Calculation of balcony area is measured as the area bounded by the centre line of the demising or partition walls separating one unit from another unit, the outmost face of the enclosing guard and the external face of the unit adjoining the balcony. 7. The units are measured at typical floor in the building. Columns may vary in size depending on the floor level.



TOPAZ RESIDENCES

BUILDING	TOPAZ - 3BR
3 BEDROOM	TYPE E
UNIT NO.	1111
SUITE AREA.	167 m² (1.797 sq.ft)
BALCONY AREA.	16 m² (172 sq.ft)
TOTAL AREA	183 m² (1.970 sq.ft)



Level 11



جزيرة مريم
MARYAM ISLAND
SHARJAH

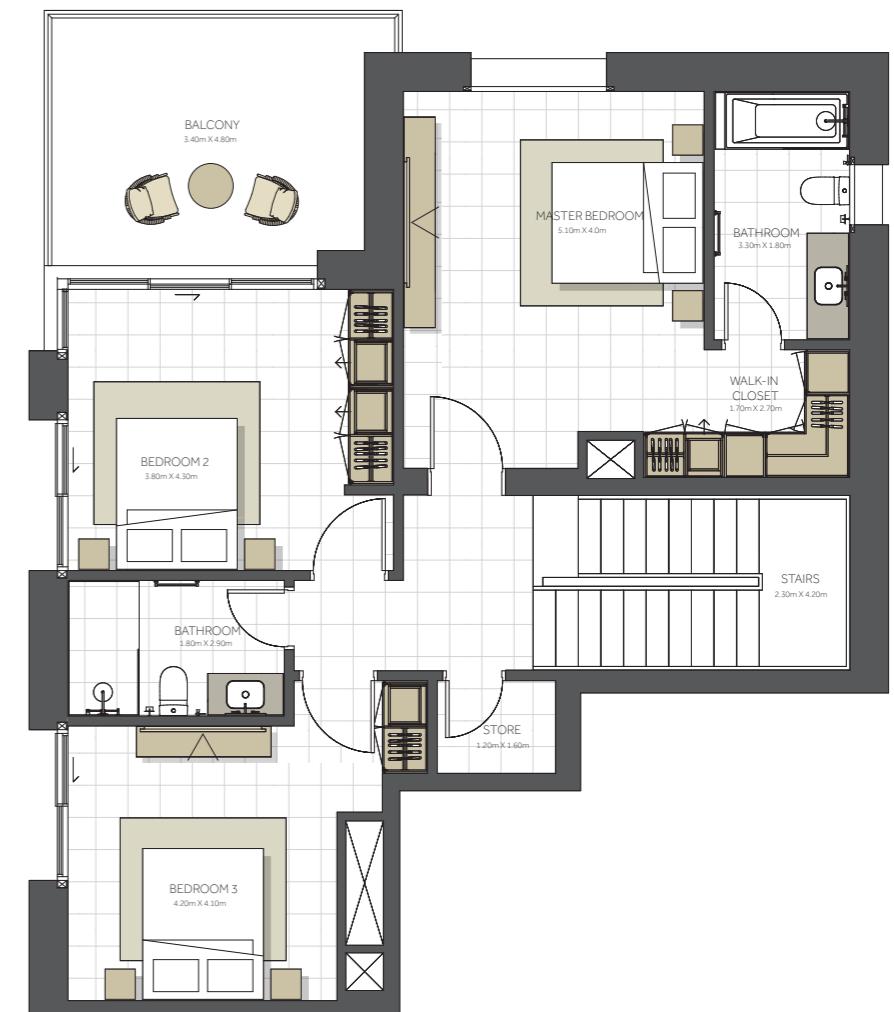
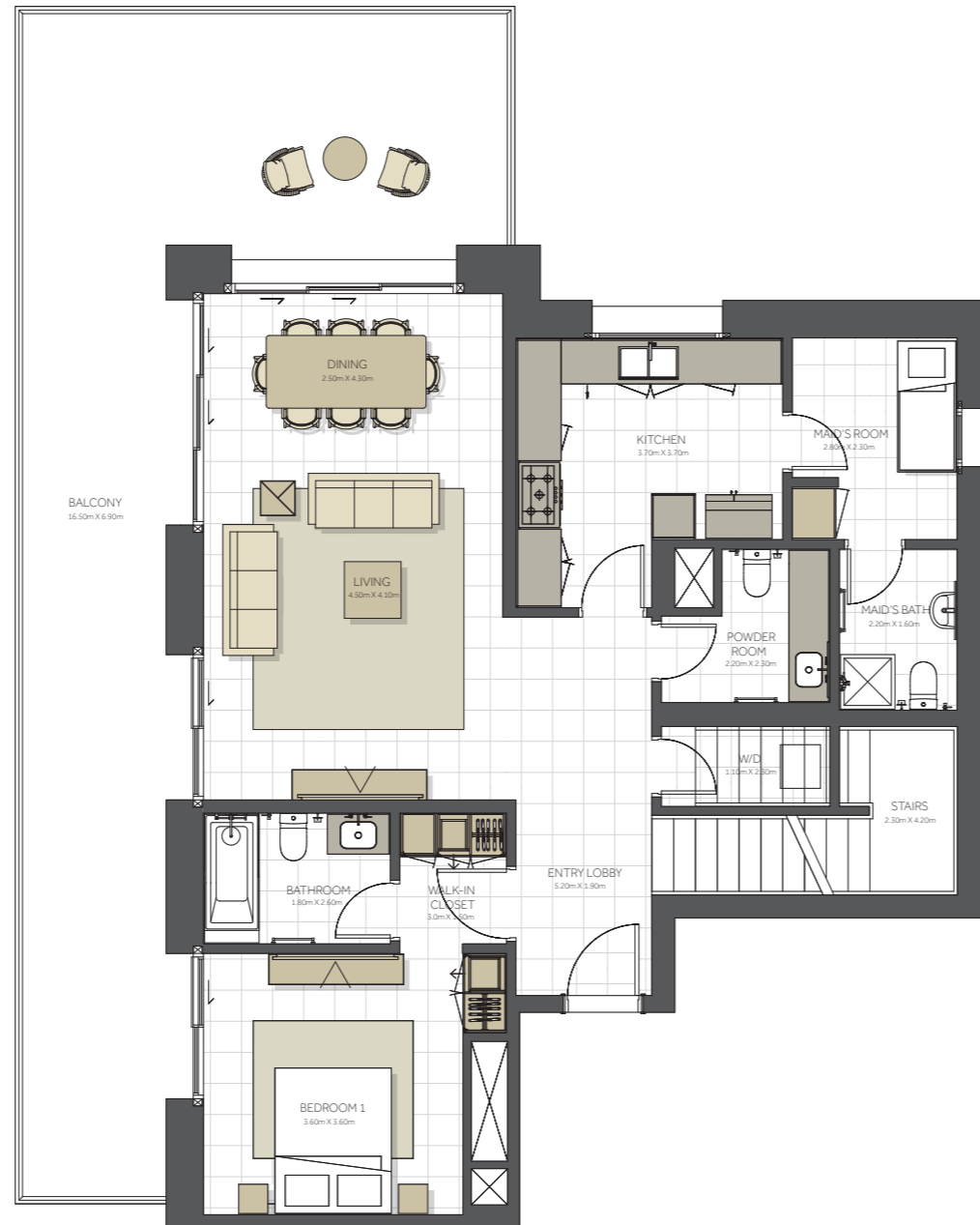
Disclaimer:

1. All room dimensions are measured to structural elements and exclude all finishes and construction tolerances. 2. All dimensions have been provided by our consultant architects. 3. All materials, dimensions and drawings are approximate. Information is subject to change without notice. 4. Actual suite area may vary from the stated area. Drawings not to scale. The developer reserves the right to make revisions. 5. Calculation of suite area is measured as the area bounded by the centre line of the demising or partition walls separating one unit from another unit, the exterior face of all exterior walls, and the exterior face of the corridor wall enclosing the adjoining unit. 6. Calculation of balcony area is measured as the area bounded by the centre line of the demising or partition walls separating one unit from another unit, the outmost face of the enclosing guard and the external face of the unit adjoining the balcony. 7. The units are measured at typical floor in the building. Columns may vary in size depending on the floor level.



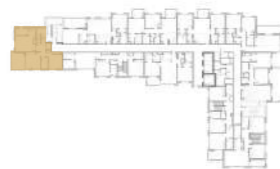
TOPAZ RESIDENCES

BUILDING	TOPAZ - 4BR
4 BEDROOM	TYPE A Duplex
UNIT NO.	1208
SUITE AREA.	217 m² (2.336 sq.ft)
BALCONY AREA.	69 m² (743 sq.ft)
TOTAL AREA	286 m² (3.078 sq.ft)



Level 12

Level 13



Disclaimer:

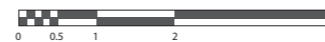
1. All room dimensions are measured to structural elements and exclude all finishes and construction tolerances. 2. All dimensions have been provided by our consultant architects. 3. All materials, dimensions and drawings are approximate. Information is subject to change without notice. 4. Actual suite area may vary from the stated area. Drawings not to scale. The developer reserves the right to make revisions. 5. Calculation of suite area is measured as the area bounded by the centre line of the demising or partition walls separating one unit from another unit, the exterior face of all exterior walls, and the exterior face of the corridor wall enclosing the adjoining unit. 6. Calculation of balcony area is measured as the area bounded by the centre line of the demising or partition walls separating one unit from another unit, the outmost face of the enclosing guard and the external face of the unit adjoining the balcony. 7. The units are measured at typical floor in the building. Columns may vary in size depending on the floor level.



TOPAZ RESIDENCES

BUILDING	TOPAZ - 4BR
4 BEDROOM	TYPE A
UNIT NO.	1110
SUITE AREA.	196m² (2.110 sq.ft)
BALCONY AREA.	46 m² (495 sq.ft)
TOTAL AREA	242 m² (2.605 sq.ft)

Level 11



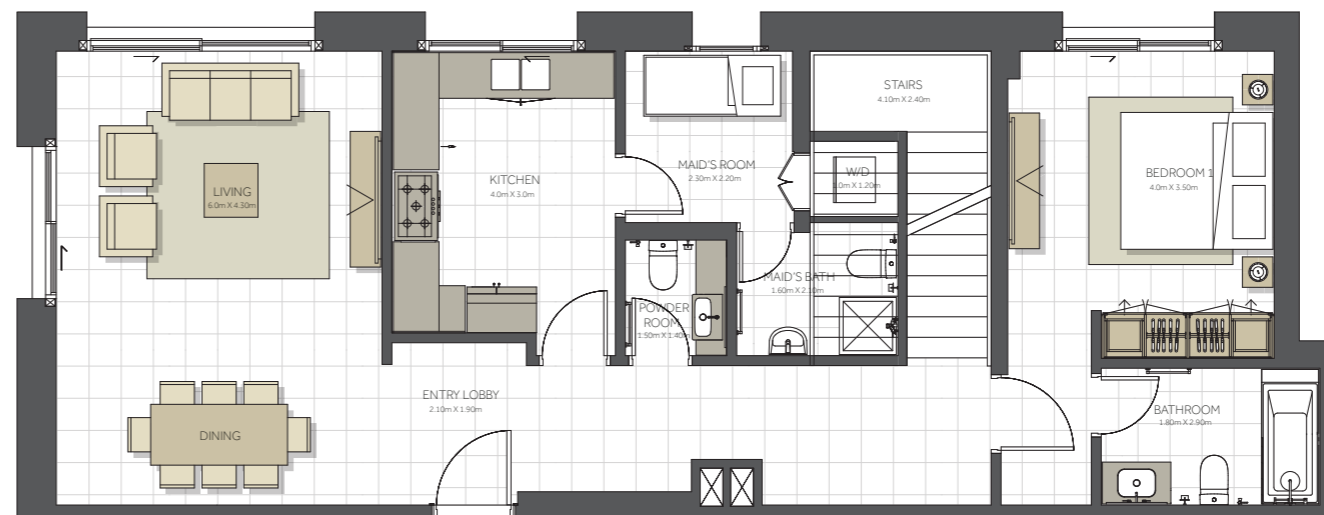
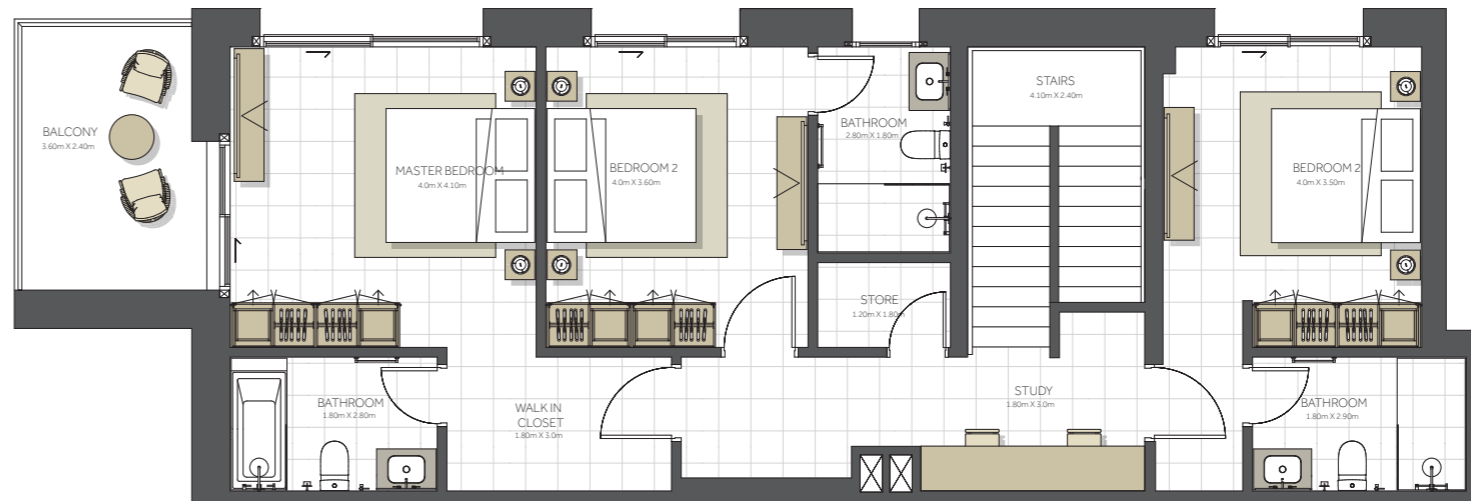
Disclaimer:

1. All room dimensions are measured to structural elements and exclude all finishes and construction tolerances. 2. All dimensions have been provided by our consultant architects. 3. All materials, dimensions and drawings are approximate. Information is subject to change without notice. 4. Actual suite area may vary from the stated area. Drawings not to scale. The developer reserves the right to make revisions. 5. Calculation of suite area is measured as the area bounded by the centre line of the demising or partition walls separating one unit from another unit, the exterior face of all exterior walls, and the exterior face of the corridor wall enclosing the adjoining unit. 6. Calculation of balcony area is measured as the area bounded by the centre line of the demising or partition walls separating one unit from another unit, the outmost face of the enclosing guard and the external face of the unit adjoining the balcony. 7. The units are measured at typical floor in the building. Columns may vary in size depending on the floor level.

توباز

TOPAZ RESIDENCES

BUILDING	TOPAZ - 4BR
4 BEDROOM	TYPE B Duplex
UNIT NO.	1201
SUITE AREA.	214m² (2.303 sq.ft)
BALCONY AREA.	10 m² (107 sq.ft)
TOTAL AREA	224 m² (2.411 sq.ft)



Level 12

Level 13



EAGLE HILLS
ABU DHABI



جزيرة مريم
MARYAM ISLAND
SHARJAH

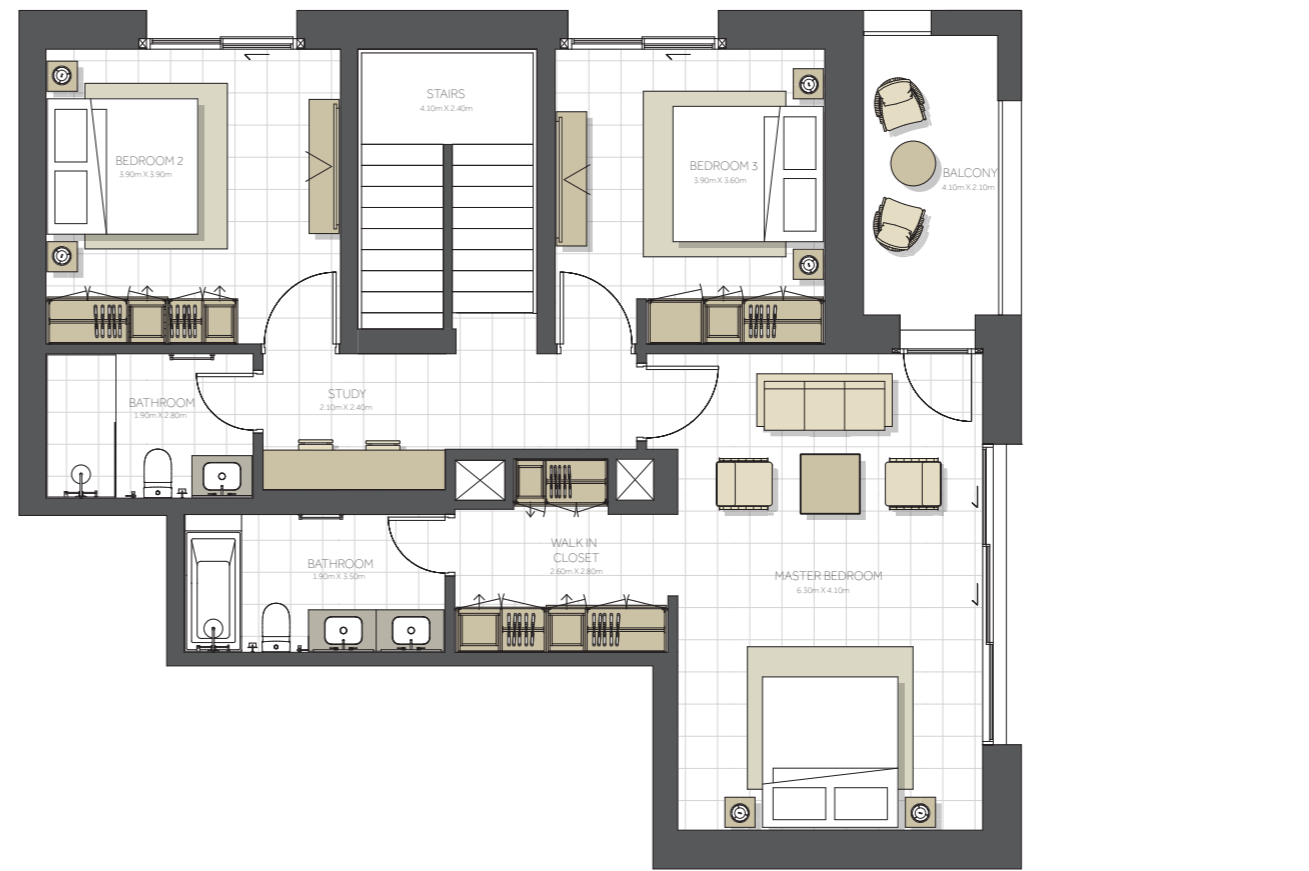
Disclaimer:

1. All room dimensions are measured to structural elements and exclude all finishes and construction tolerances. 2. All dimensions have been provided by our consultant architects. 3. All materials, dimensions and drawings are approximate. Information is subject to change without notice. 4. Actual suite area may vary from the stated area. Drawings not to scale. The developer reserves the right to make revisions. 5. Calculation of suite area is measured as the area bounded by the centre line of the demising or partition walls separating one unit from another unit, the exterior face of all exterior walls, and the exterior face of the corridor wall enclosing the adjoining unit. 6. Calculation of balcony area is measured as the area bounded by the centre line of the demising or partition walls separating one unit from another unit, the outmost face of the enclosing guard and the external face of the unit adjoining the balcony. 7. The units are measured at typical floor in the building. Columns may vary in size depending on the floor level.



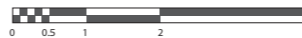
TOPAZ RESIDENCES

BUILDING	TOPAZ - 4BR
4 BEDROOM	TYPE C Duplex
UNIT NO.	1202
SUITE AREA.	221m ² (2.379 sq.ft)
BALCONY AREA.	30 m ² (323 sq.ft)
TOTAL AREA	251 m ² (2.702 sq.ft)



Level 12

Level 13



جزيرة مريم
MARYAM ISLAND
SHARJAH

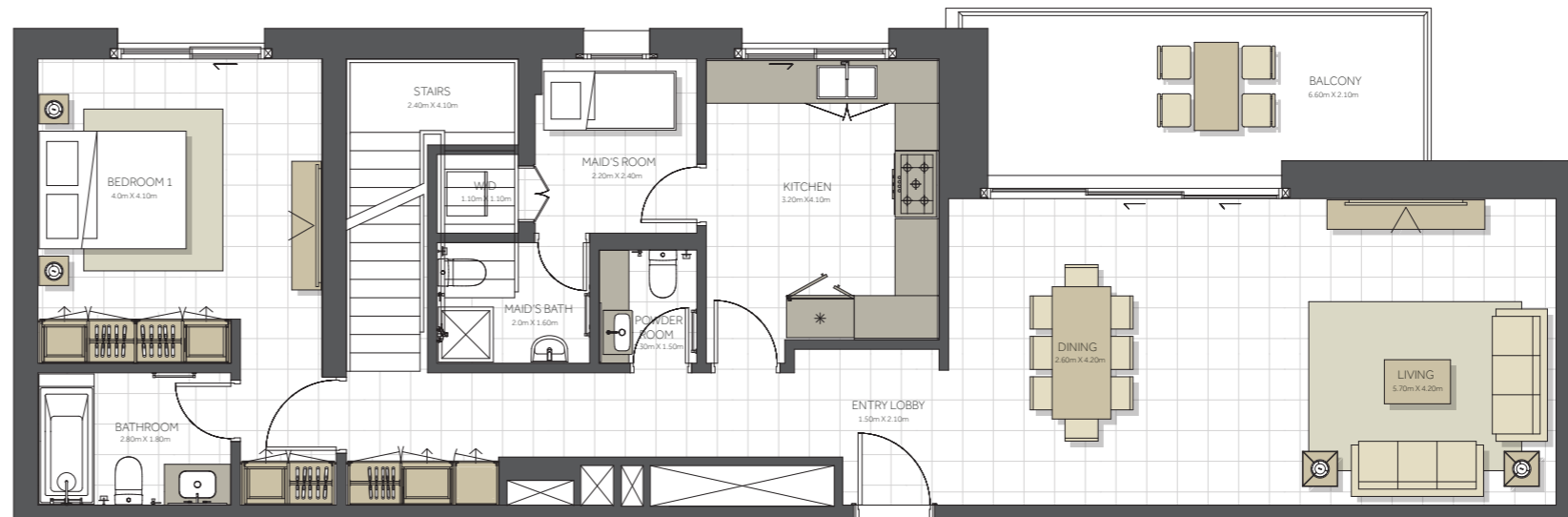
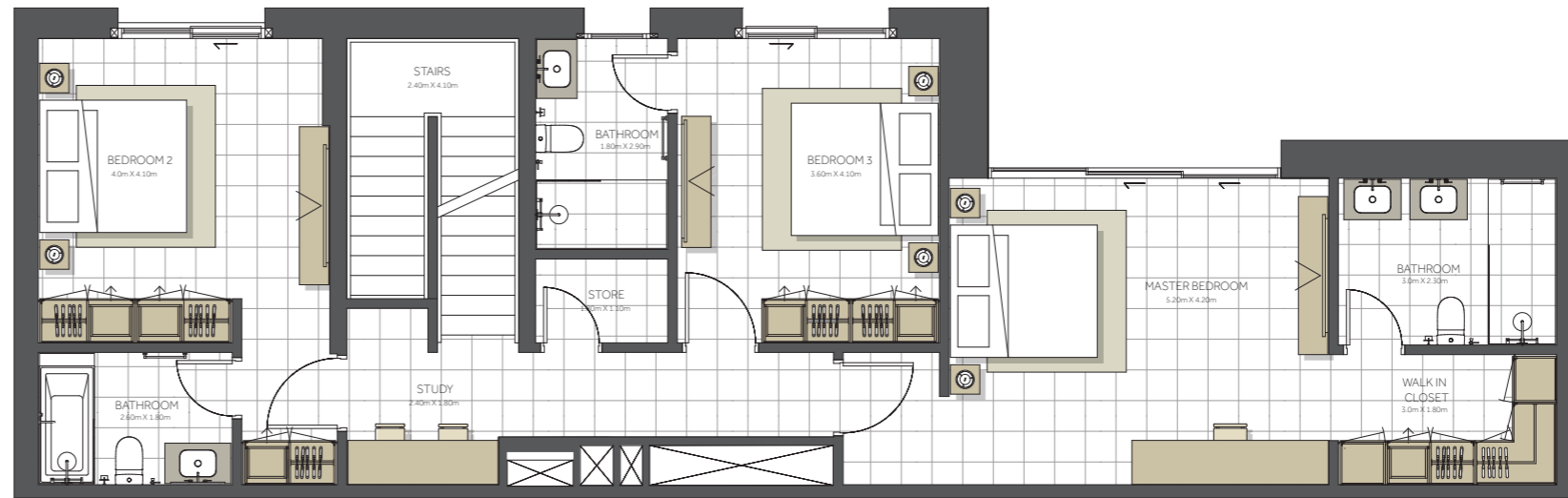
Disclaimer:

1. All room dimensions are measured to structural elements and exclude all finishes and construction tolerances. 2. All dimensions have been provided by our consultant architects. 3. All materials, dimensions and drawings are approximate. Information is subject to change without notice. 4. Actual suite area may vary from the stated area. Drawings not to scale. The developer reserves the right to make revisions. 5. Calculation of suite area is measured as the area bounded by the centre line of the demising or partition walls separating one unit from another unit, the exterior face of all exterior walls, and the exterior face of the corridor wall enclosing the adjoining unit. 6. Calculation of balcony area is measured as the area bounded by the centre line of the demising or partition walls separating one unit from another unit, the outmost face of the enclosing guard and the external face of the unit adjoining the balcony. 7. The units are measured at typical floor in the building. Columns may vary in size depending on the floor level.



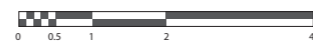
TOPAZ RESIDENCES

BUILDING	TOPAZ - 4BR
4 BEDROOM	TYPE D Duplex
UNIT NO.	1209
SUITE AREA.	241 m² (2.594 sq.ft)
BALCONY AREA.	14 m² (151 sq.ft)
TOTAL AREA	255m² (2.745 sq.ft)



Level 12

Level 13



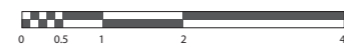
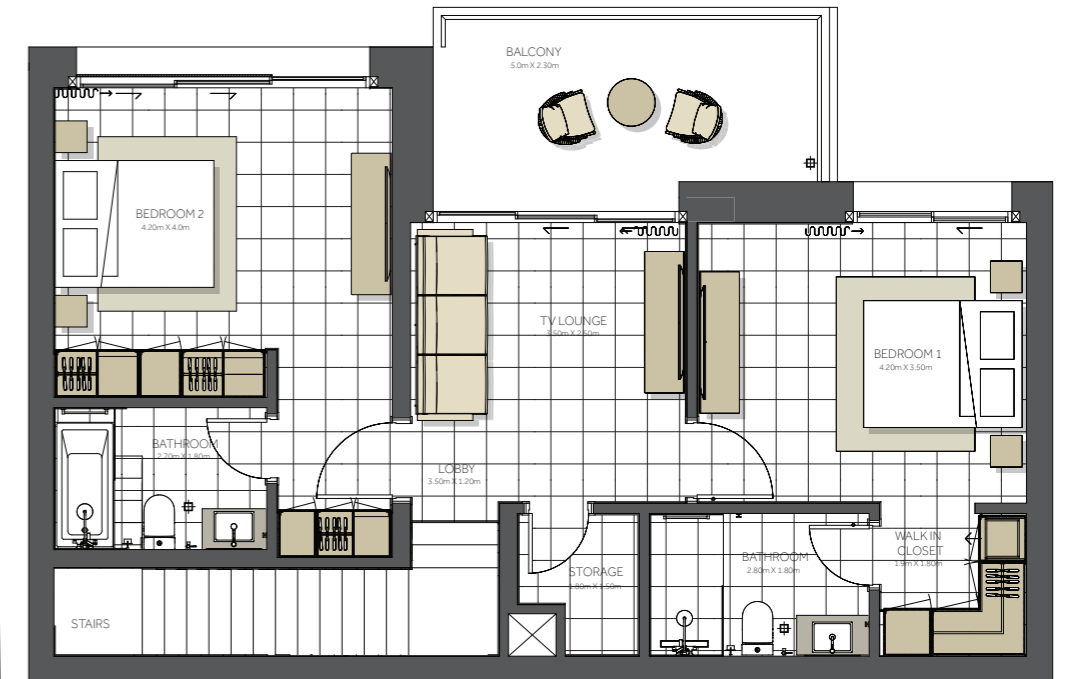
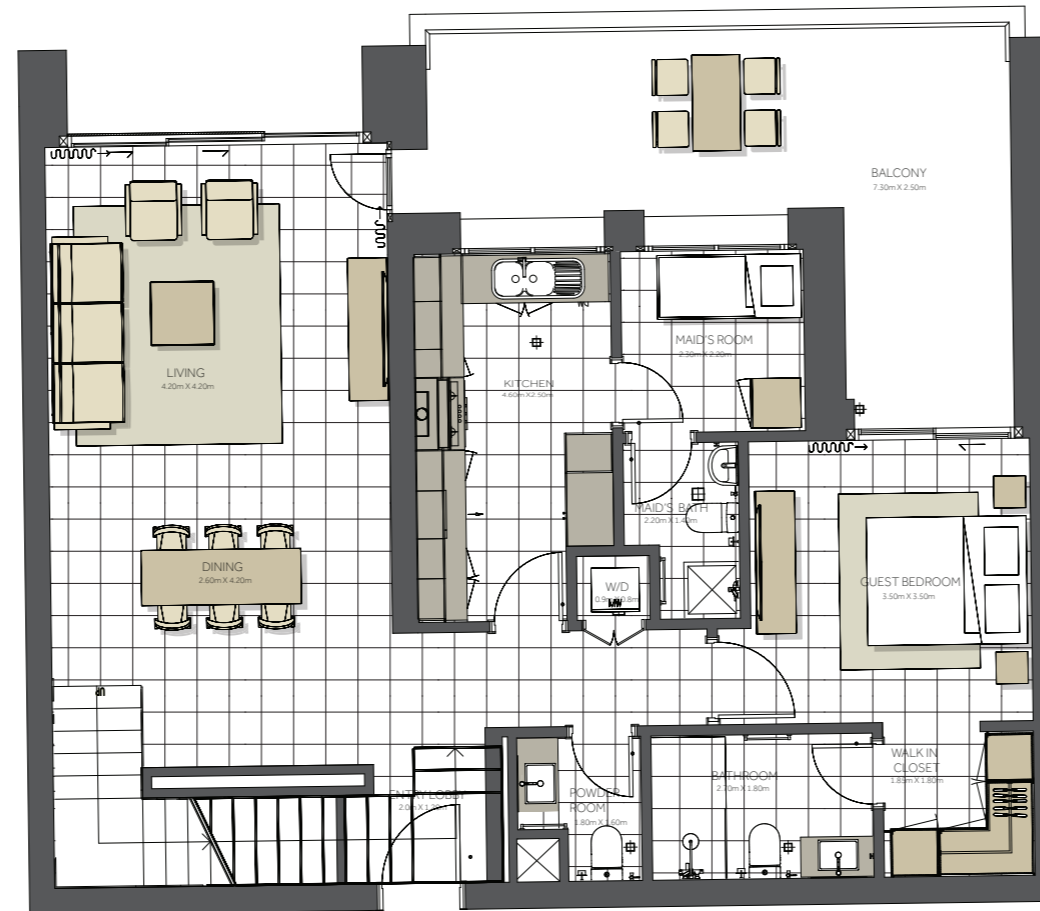
Disclaimer:

1. All room dimensions are measured to structural elements and exclude all finishes and construction tolerances. 2. All dimensions have been provided by our consultant architects. 3. All materials, dimensions and drawings are approximate. Information is subject to change without notice. 4. Actual suite area may vary from the stated area. Drawings not to scale. The developer reserves the right to make revisions. 5. Calculation of suite area is measured as the area bounded by the centre line of the demising or partition walls separating one unit from another unit, the exterior face of all exterior walls, and the exterior face of the corridor wall enclosing the adjoining unit. 6. Calculation of balcony area is measured as the area bounded by the centre line of the demising or partition walls separating one unit from another unit, the outmost face of the enclosing guard and the external face of the unit adjoining the balcony. 7. The units are measured at typical floor in the building. Columns may vary in size depending on the floor level.



TOPAZ RESIDENCES

BUILDING	PODIUM
3 BEDROOM	TOWNHOUSE
UNIT NO.	007,008,009
SUITE AREA.	190m² (2.045 sq.ft)
BALCONY AREA.	37 m² (398 sq.ft)
TOTAL AREA	227 m² (2.443 sq.ft)



PODIUM 2

PODIUM 1



جزيرة مريم
MARYAM ISLAND
SHARJAH

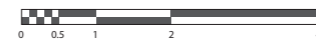
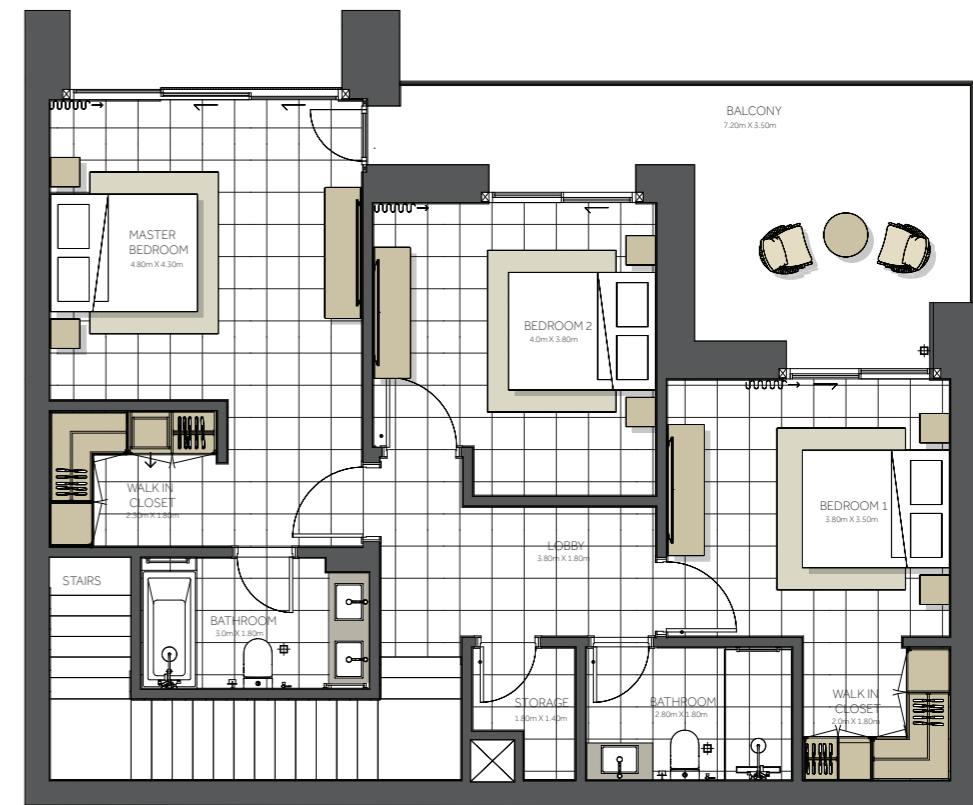
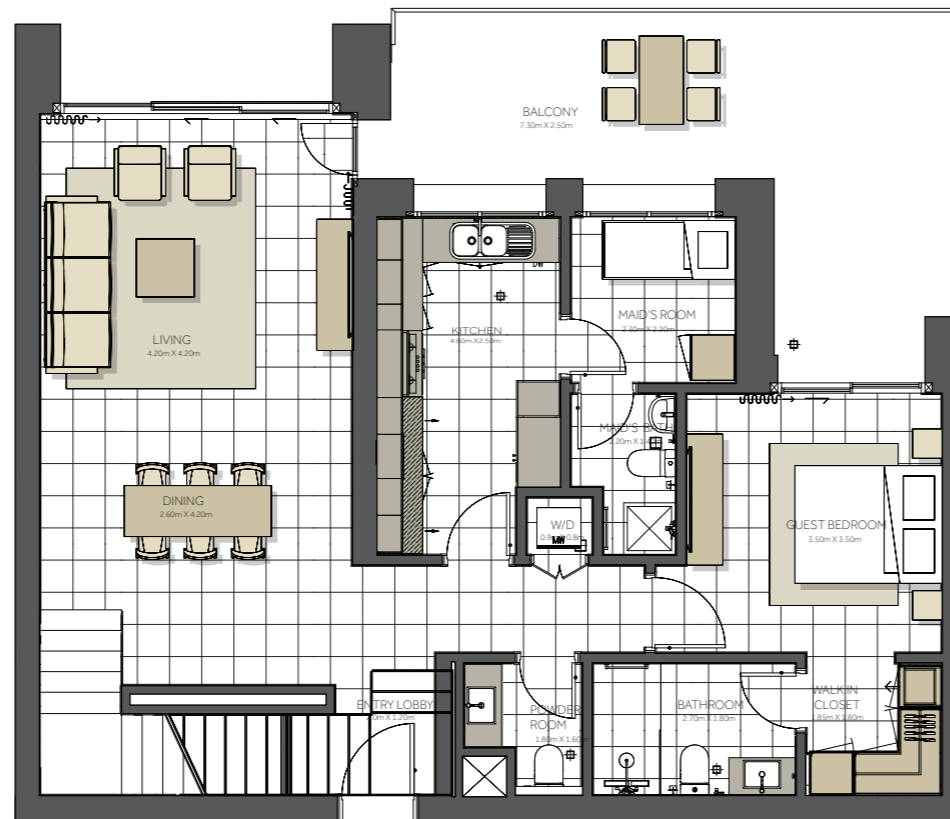
Disclaimer:

1. All room dimensions are measured to structural elements and exclude all finishes and construction tolerances. 2. All dimensions have been provided by our consultant architects. 3. All materials, dimensions and drawings are approximate. Information is subject to change without notice. 4. Actual suite area may vary from the stated area. Drawings not to scale. The developer reserves the right to make revisions. 5. Calculation of suite area is measured as the area bounded by the centre line of the demising or partition walls separating one unit from another unit, the exterior face of all exterior walls, and the exterior face of the corridor wall enclosing the adjoining unit. 6. Calculation of balcony area is measured as the area bounded by the centre line of the demising or partition walls separating one unit from another unit, the outmost face of the enclosing guard and the external face of the unit adjoining the balcony. 7. The units are measured at typical floor in the building. Columns may vary in size depending on the floor level.



TOPAZ RESIDENCES

BUILDING	PODIUM
4 BEDROOM	TOWNHOUSE
UNIT NO.	006,010
SUITE AREA.	214m² (2.303 sq.ft)
BALCONY AREA.	45 m² (484 sq.ft)
TOTAL AREA	259 m² (2.789 sq.ft)



PODIUM 2

PODIUM 1



جزيرة مريم
MARYAM ISLAND
SHARJAH

Disclaimer:

1. All room dimensions are measured to structural elements and exclude all finishes and construction tolerances. 2. All dimensions have been provided by our consultant architects. 3. All materials, dimensions and drawings are approximate. Information is subject to change without notice. 4. Actual suite area may vary from the stated area. Drawings not to scale. The developer reserves the right to make revisions. 5. Calculation of suite area is measured as the area bounded by the centre line of the demising or partition walls separating one unit from another unit, the exterior face of all exterior walls, and the exterior face of the corridor wall enclosing the adjoining unit. 6. Calculation of balcony area is measured as the area bounded by the centre line of the demising or partition walls separating one unit from another unit, the outmost face of the enclosing guard and the external face of the unit adjoining the balcony. 7. The units are measured at typical floor in the building. Columns may vary in size depending on the floor level.