



CITADEL

a project by

parq



CITADEL

a project by
parq

Fortress city situated on a cliff, just a 7-minute drive from Bali's finest beach. It offers luxurious premium **villas with private pools and stunning ocean views, available for sale.**

SUPER SECURITY

Like at Fort Knox, the U.S. gold reserve vault.



24/7 SECURITY

Security is provided by armed guards. The entire area has video surveillance. Entry via the biometric pass.



COMMUNITY

Membership is exclusive. Personal approval of new villa owners by the founder of Parq.



CENTRALIZED STORAGE OF VALUABLES

The complex will feature a separate room with secure deposit boxes.



INDIVIDUAL SECURITY

Each home is equipped with a panic button. Additional personalized security features are available upon request.



ENERGY SECURITY

A fully self-sufficient water and power supply system.



PROTECTION AGAINST ALL ELEMENTS

Enhanced seismic resistance. Fire protection measures. Enhanced protection against insects.





HELICOPTER PAD

You can get from the complex to any point on the island in 15 minutes by charter helicopter. A special platform will be provided for this purpose within the territory of the complex.



BLACK CAR

Several premium cars with drivers in classic suits will be waiting for the residents of the complex at any moment.



CONCIERGE SERVICE

Available **24/7**, ready to assist with any request.



CLUB INFRASTRUCTURE

Restaurant with chefs from France and Italy; cigar bar and wine cellar; gym and yoga studio; spa, sauna, and hammam.



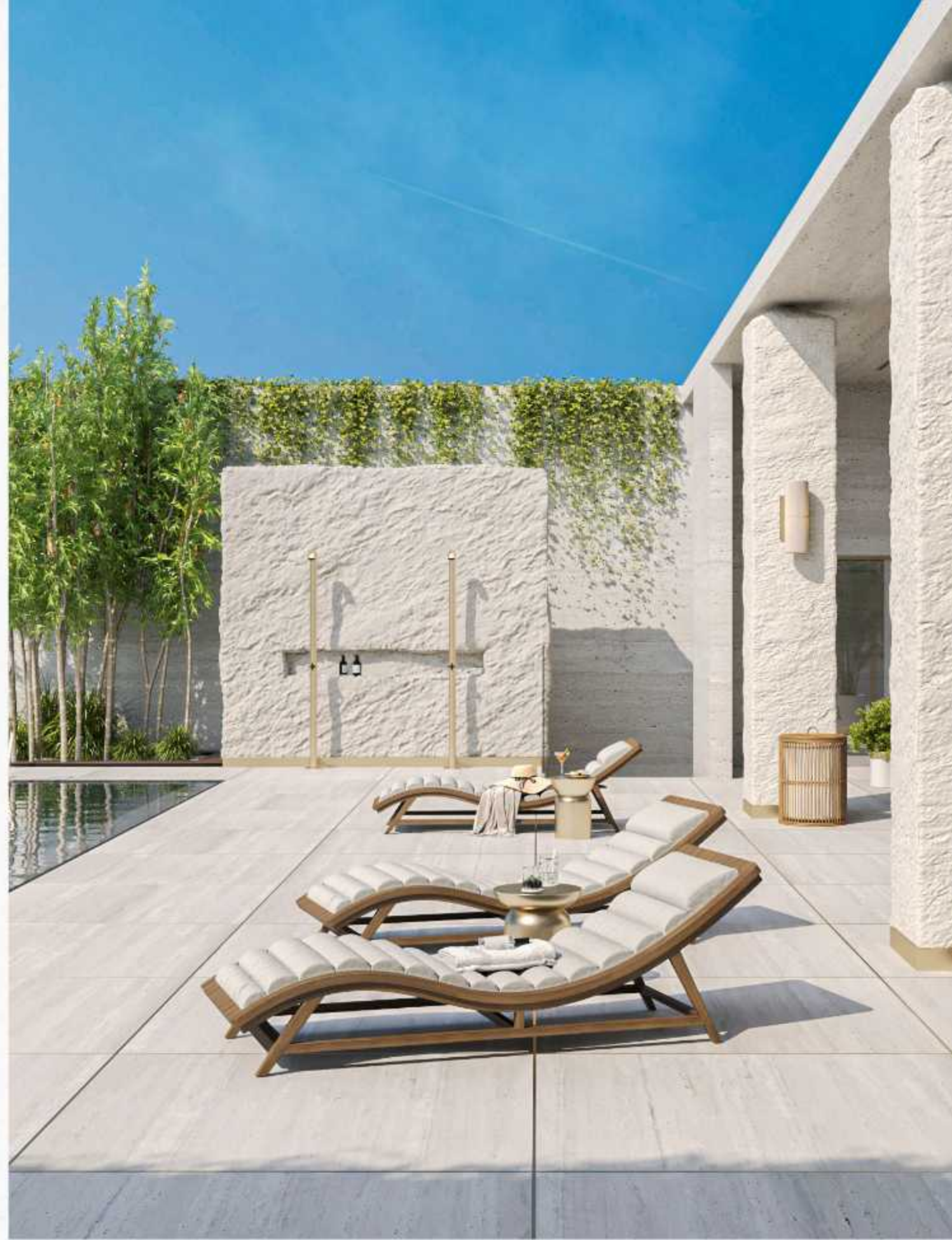
CAR SPA

The complex features an underground secure garage with a Car Spa service - just leave the keys to your car and get your car perfectly cleaned.



THE BEST BEACH IN BALI IS NEARBY

Melasti Beach is just a 7-minute drive away. There is no traffic; at the beach, you can either spend time in the luxurious beach clubs or relax in a secluded, atmospheric place.



VILLAS WITH OCEAN VIEW



- | | | |
|---|---|---|
|  Villa 142 |  Villa 125 |  Villa 100 |
|  Villa 106 |  Villa 78 |  Sold out |



CLASSIC VILLAS



VILLA 78

\$ 358 800

Payment is made in Indonesian rupiah:
5 202 600 000 IDR

*The information is provided for informational purposes only and does not constitute a public offer. Please check with your manager for current prices and conditions.



78 sq.m.



175 sq.m.



1 bedroom



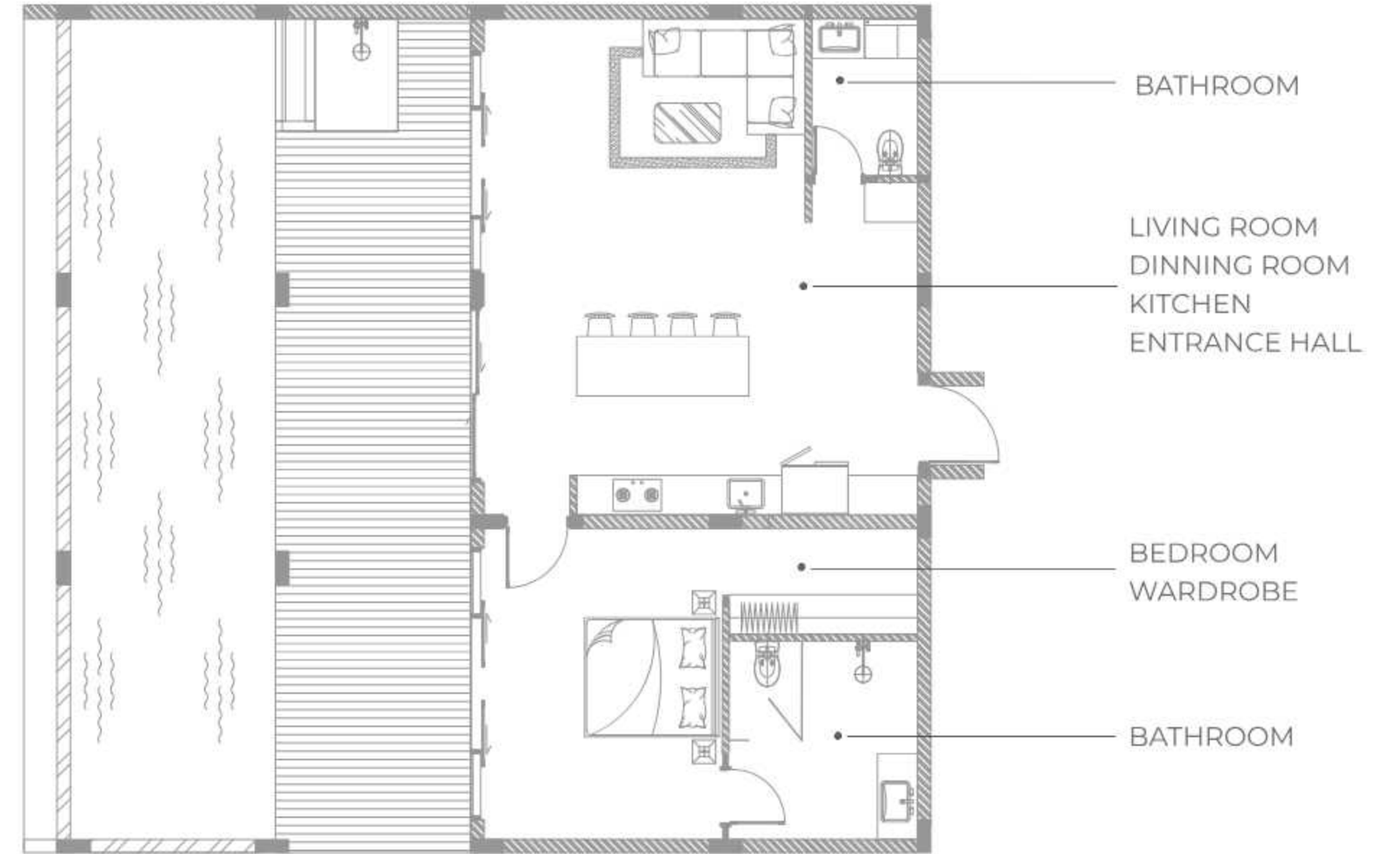
Ocean view



Private pool



First installment is 30%





VILLA 106

\$ 477 000

Payment is made in Indonesian rupiah:
6 916 500 000 IDR

*The information is provided for informational purposes only and does not constitute a public offer. Please check with your manager for current prices and conditions.



106 sq.m



250 sq.m



2 bedrooms



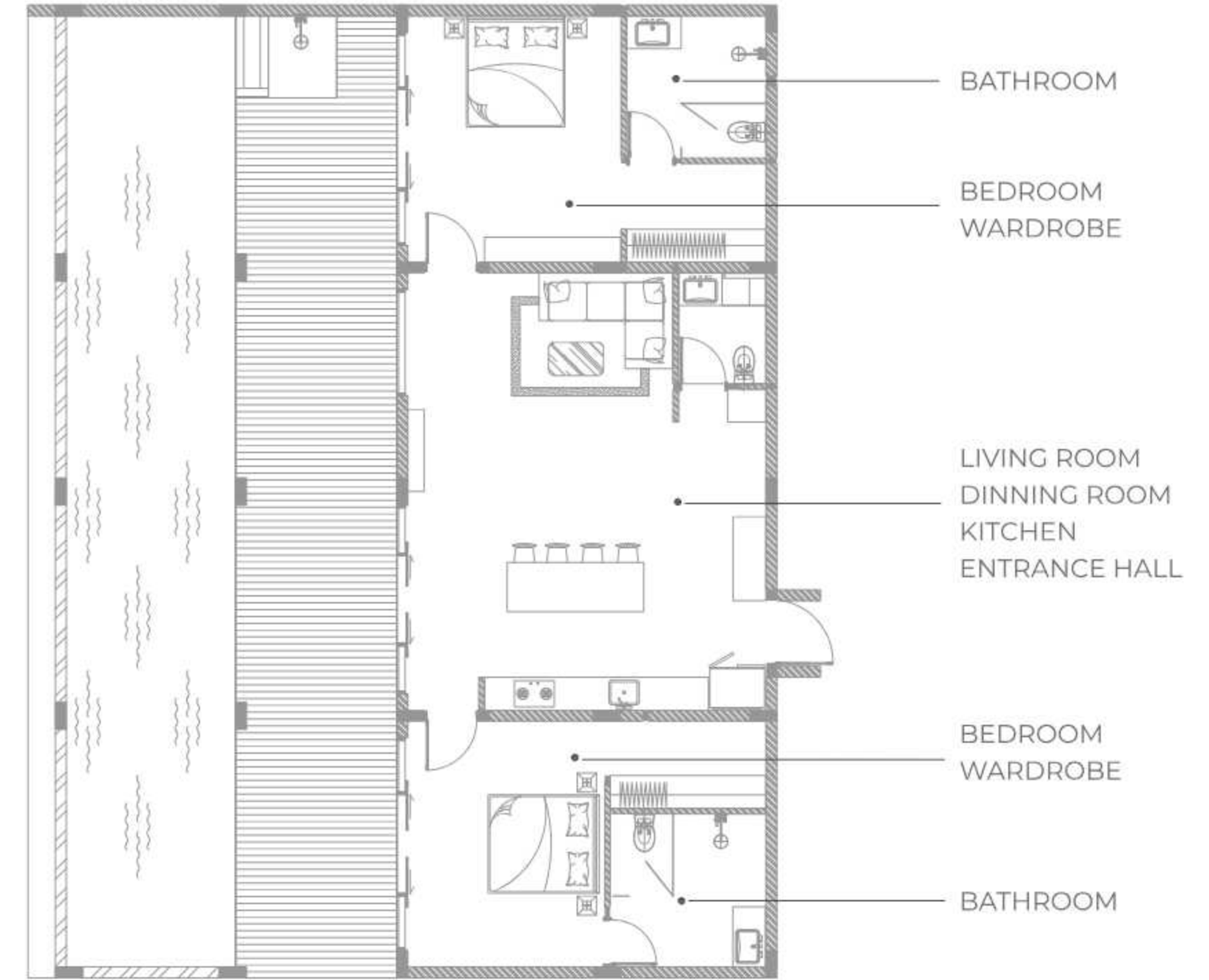
Ocean view



Private pool



First installment is 30%





VILLA 142

\$ 610 600

Payment is made in Indonesian rupiah:
8 853 700 000 IDR.

*The information is provided for informational purposes only and does not constitute a public offer. Please check with your manager for current prices and conditions.



142 sq.m



300 sq.m



3 bedrooms



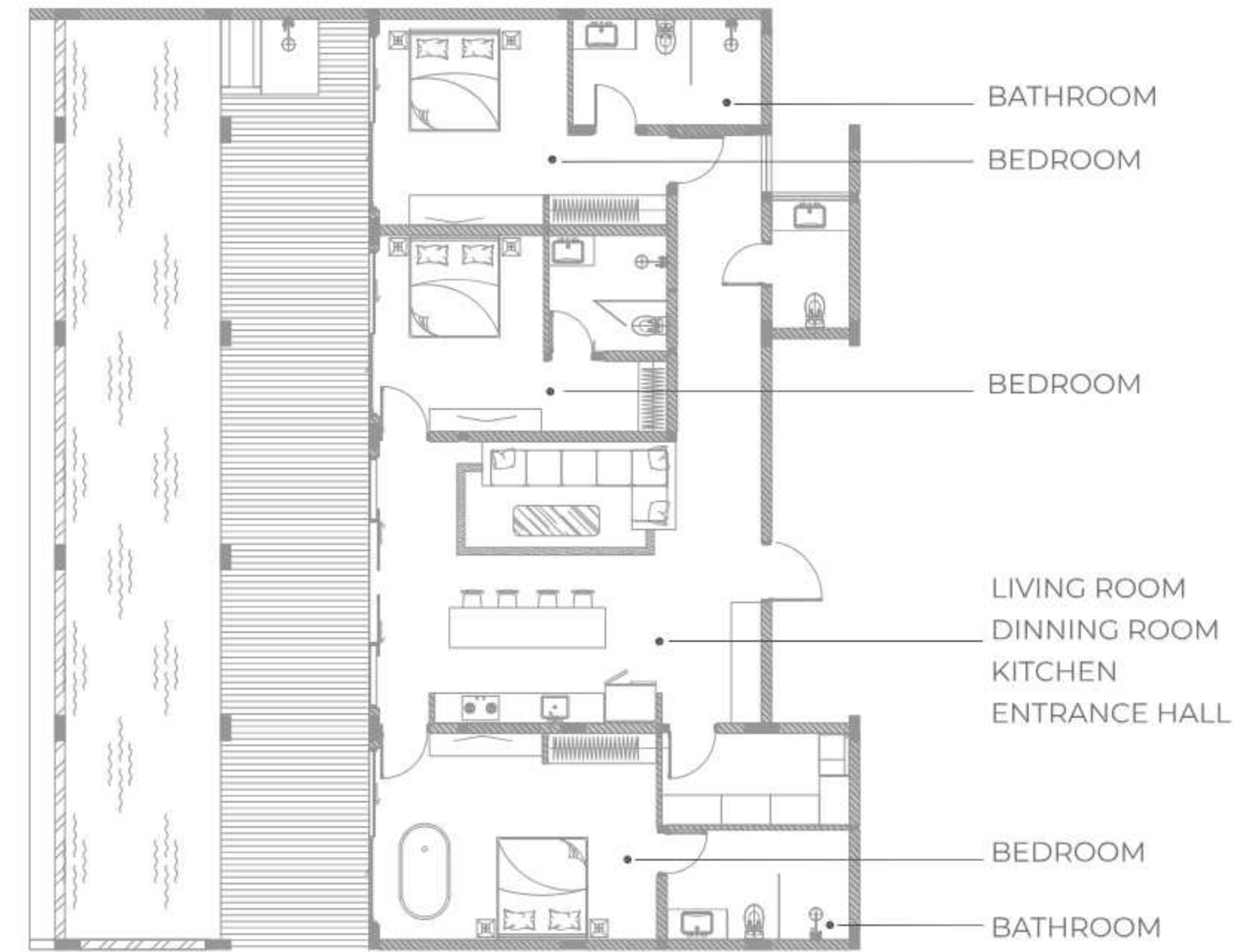
Ocean view



Private pool



First installment is 30%





PREMIUM VILLAS

— PARQ | CITADEL | 18 —



VILLA 100

\$ 490 000

Payment is made in Indonesian rupiah:
7 105 000 000 IDR

*The information is provided for informational purposes only and does not constitute a public offer. Please check with your manager for current prices and conditions.



100 sq.m



from 300 sq.m



Open space
or 1 bedroom



Ocean view

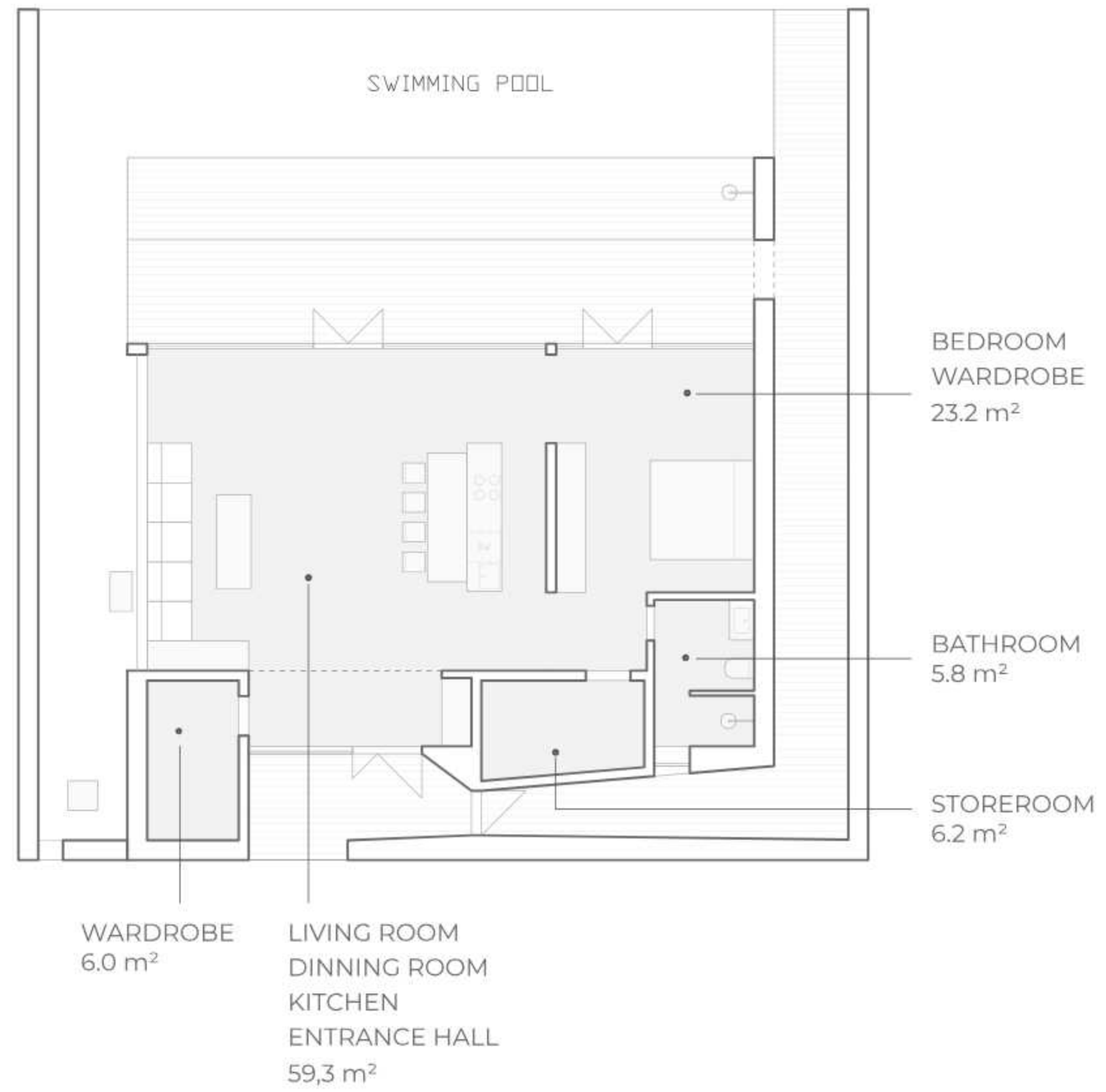


Private pool

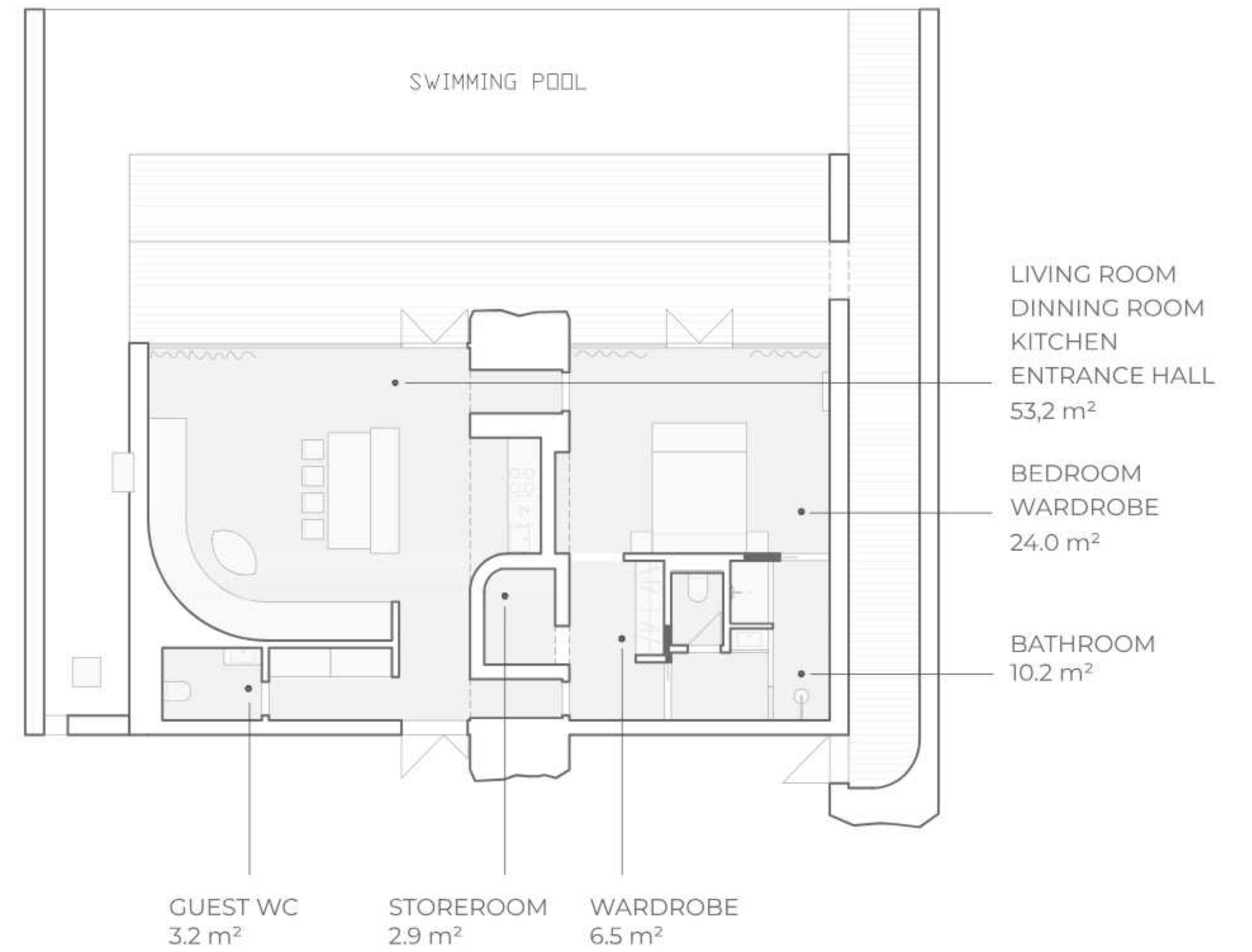


First installment is 30%

Open space



1 bedroom





VILLA 125

\$ 612 500

Payment is made in Indonesian rupiah:
8 881 250 000 IDR.

*The information is provided for informational purposes only and does not constitute a public offer. Please check with your manager for current prices and conditions.



125 sq.m



from 400 sq.m



1 or 2 bedrooms



Ocean view

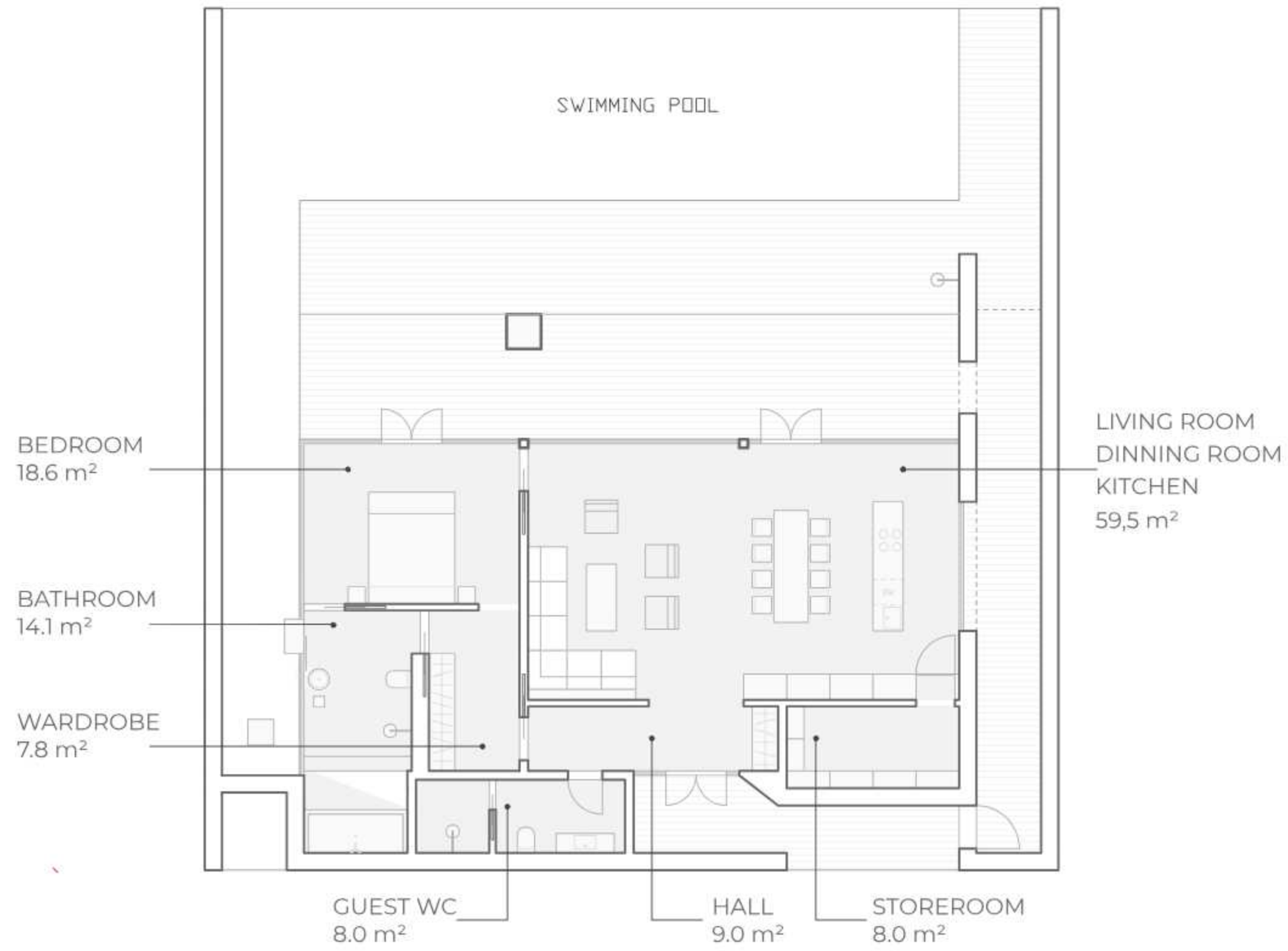


Private pool

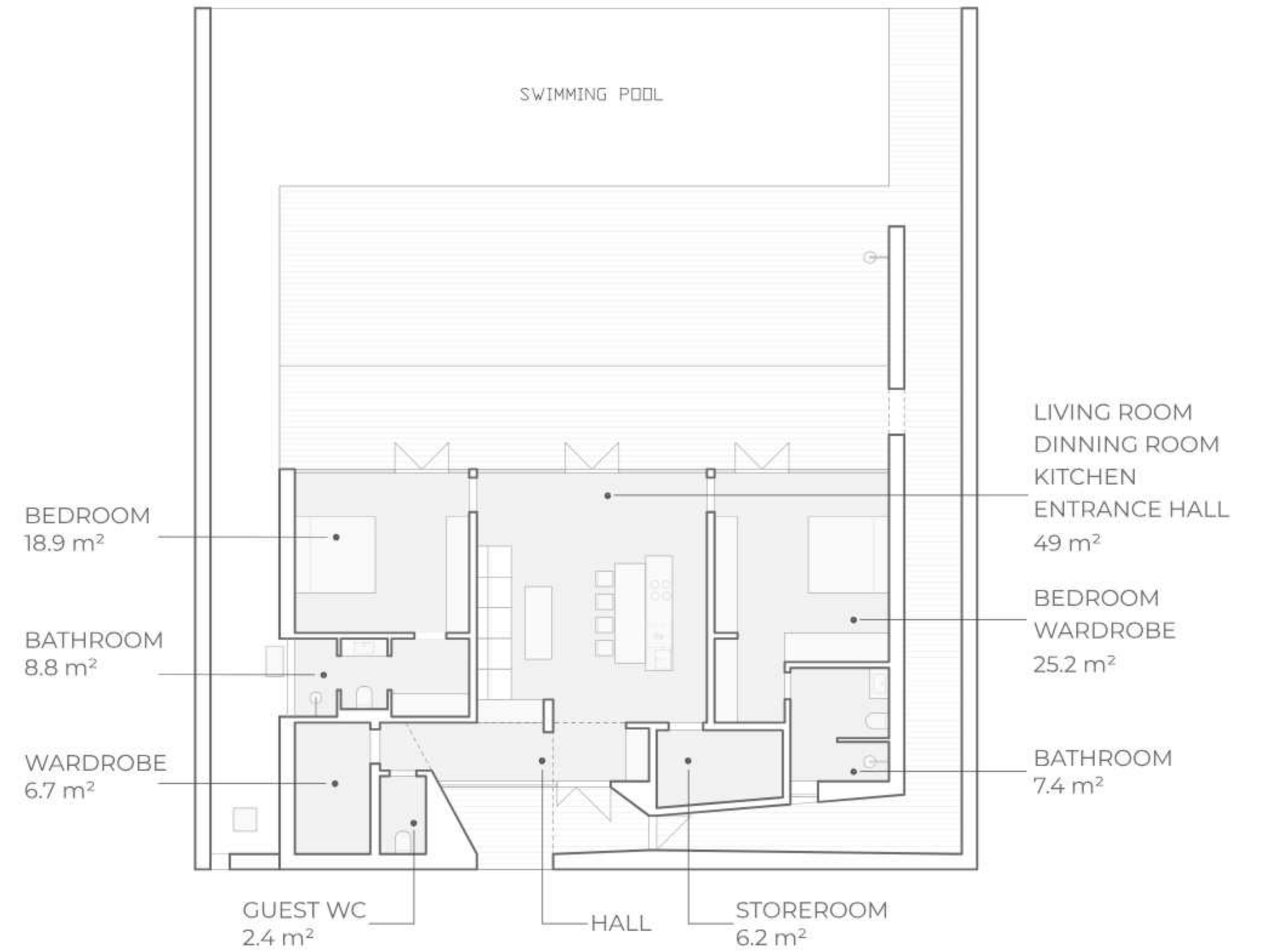


First installment is 30%

1 bedroom

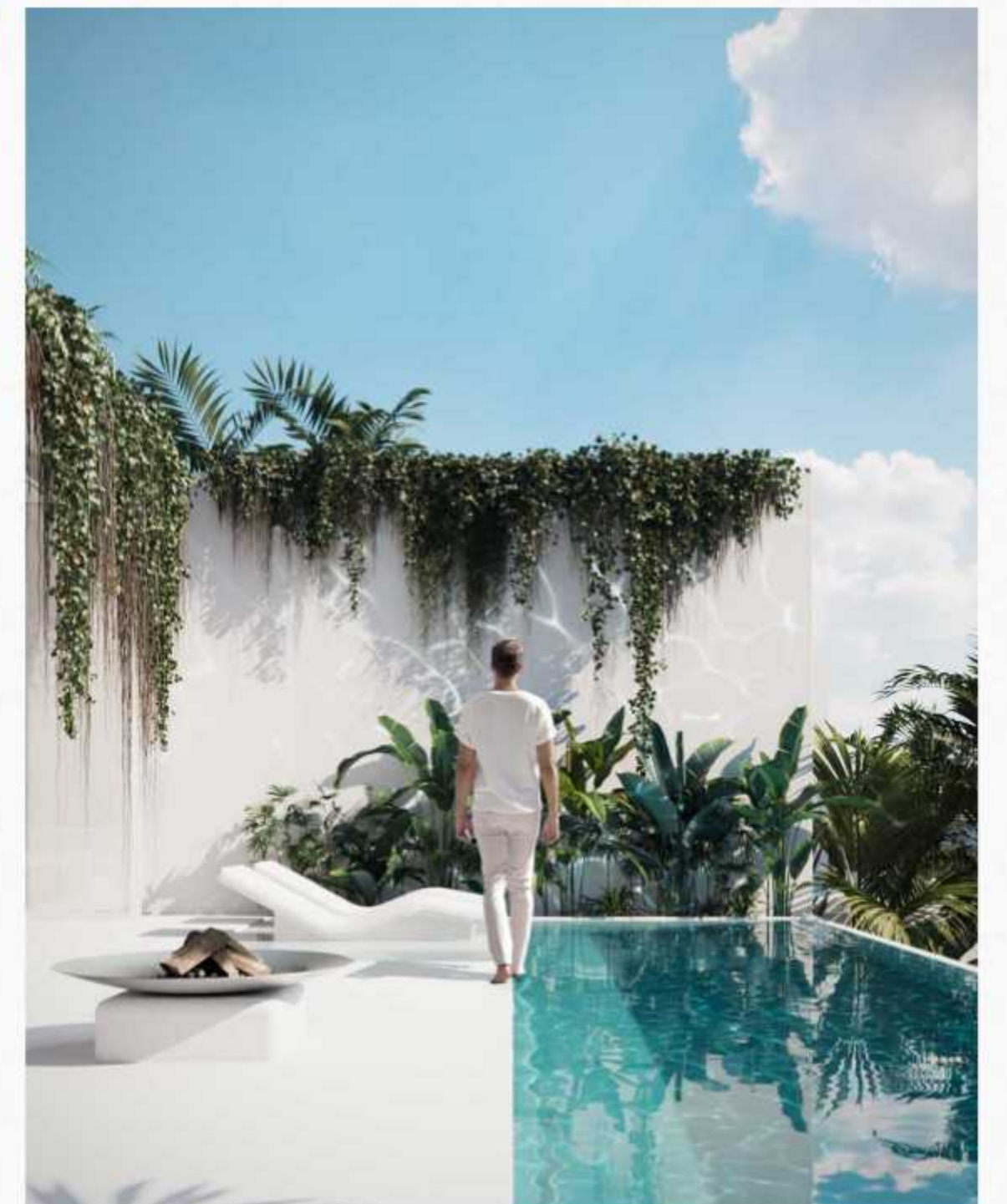
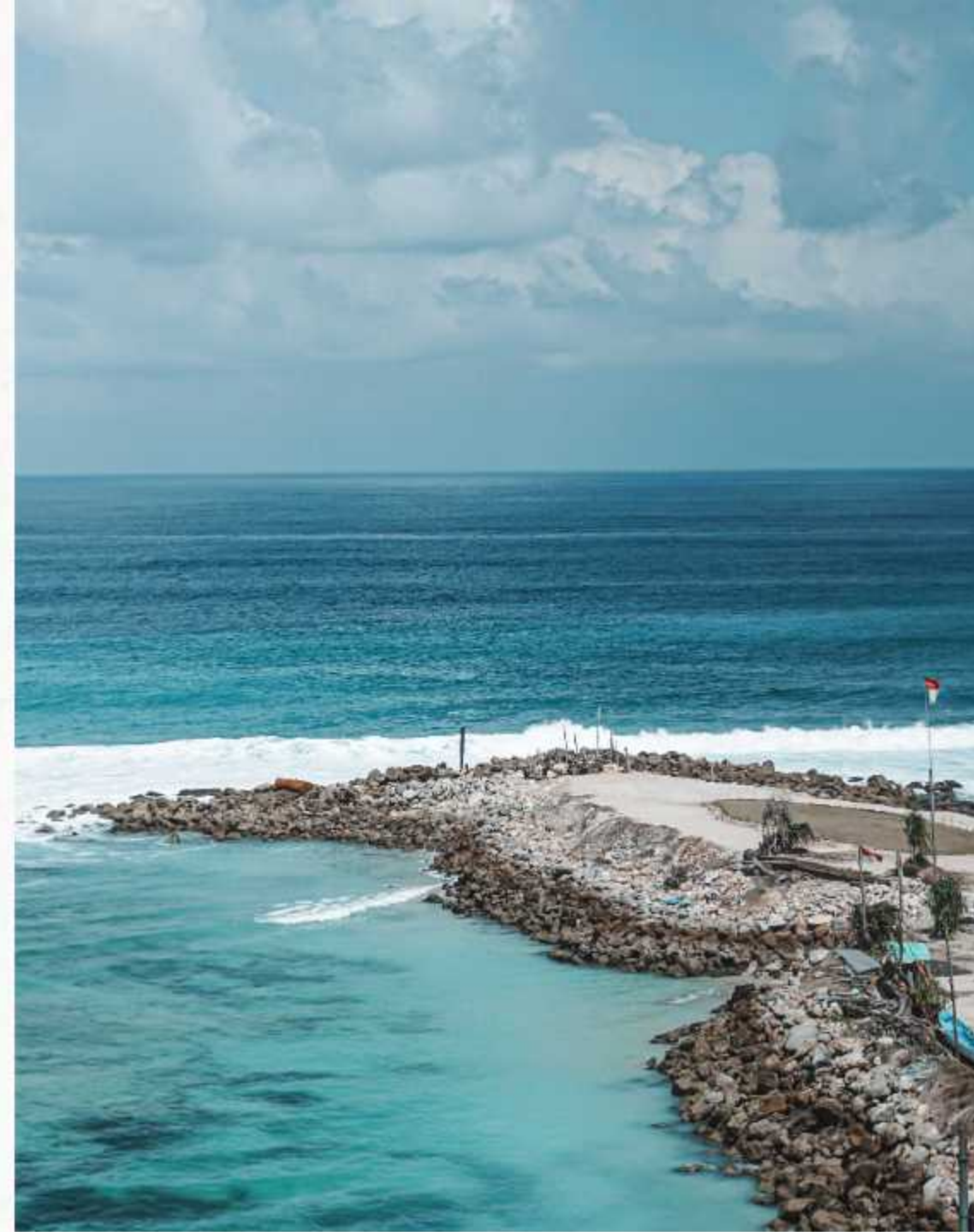


2 bedrooms



7 MINUTES TO THE BEST BEACH IN BALI

The Citadel's location ensures that you're just a short 7-minute drive away from the island's most stunning beach, Melasti. It offers 320 sunny days a year, azure ocean and golden sand. And 90% of Instagram photos in Bali are taken here.



PARQ

THE PROJECT IS DEVELOPED BY

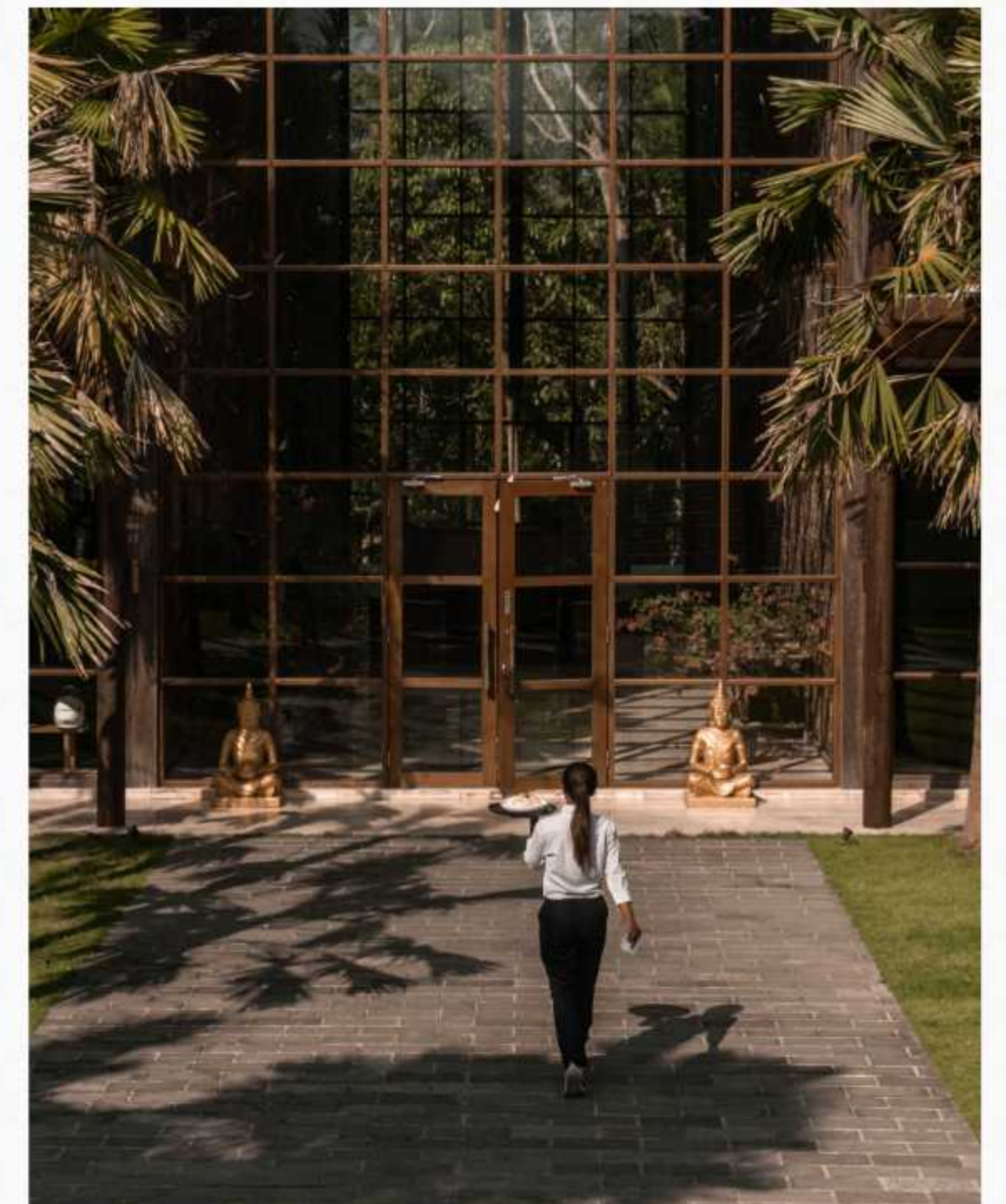
DEVELOPMENT

100 000 sq.m.

We have already built in Bali. Of these, 65,000 sq.m. is the multifunctional center PARQ UBUD.

Up to 2000

people visit the center per day. All the momentous events in Bali take place here.





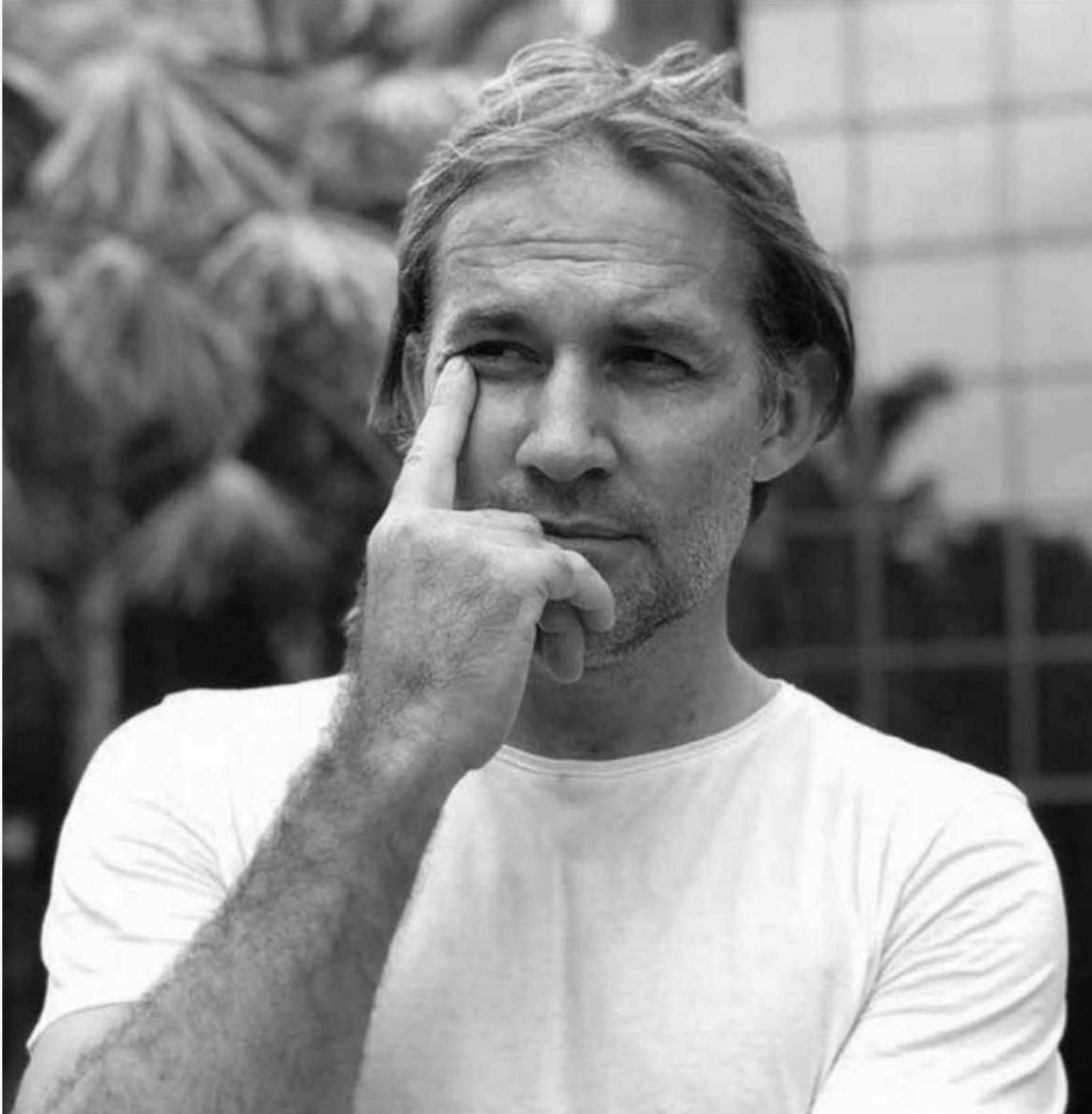
PARQ UBUD

At PARQ Ubud, we have created a new point of attraction for entrepreneurs, investors, tech, and creative people from around the world. **Top events with the best speakers take place here.**

Like a magnet, **the center draws all the interesting, popular, and successful people.** At breakfast in one of PARQ Ubud's five restaurants, you can easily encounter famous celebrities, artists and top business leaders.

At PARQ Ubud, the demand for housing is **so high that tenants sign up many months in advance.** And the land value next to PARQ Ubud has tripled since the complex opened.

WE DON'T JUST BUILD SQUARE METERS, WE CREATE POINTS OF ATTRACTION FOR THE MOST INTERESTING PEOPLE FROM ALL OVER THE WORLD! CITADEL BY PARQ WILL BECOME A NEW POINT OF ATTRACTION



ANDRE FREY

The founder of PARQ Development is a German developer and an architect, serial entrepreneur Andre Frey. **He has launched over 30 successful businesses** in Germany and Indonesia. **Andre has already created a 65 000 sq.m. complex in Bali**, that combines the most extensive infrastructure on the island with designer villas and penthouses, and the largest Eastern European community in Southeast Asia. **It also hosts all the major events of the island:** conferences, concerts, festivals, fairs, clubs, and exhibitions.

Today, Andre is applying his 15-year development experience in Bali into creating a network of innovative projects in several key locations on the island.

The founder's involvement - from the concept and architecture to supervision over the nuances of construction - and his experience in developing over 100 000 sq.m. allows for creating holistic and comfortable spaces people want to live in, create in, and fulfill themselves.

Here you can experience a sense of belonging, care, and a sense of freedom at the same time.

CITADEL

a project by
parq

LET'S DISCUSS IT