



# THE SPARK

By ESNAAD

Mohamed Bin Rashid City  
District 11





THE SPARK BY ESNAAD – WHERE LIFE SPARKS  
WITH POSSIBILITIES”





## ESNAAD REAL ESTATE DEVELOPMENT

Embark on an extraordinary journey shaped by over two decades of profound expertise in the dynamic realms of real estate and construction. ESNAAD, a name synonymous with innovation and excellence, is dedicated to elevating your living experiences through meticulously crafted spaces. Every detail within our creations serves as an eloquent testament to our unwavering commitment to sophistication and superior craftsmanship.

Inspired by a legacy steeped in over 20 years of industry expertise, ESNAAD takes pride in going beyond the ordinary. We don't just build homes; we curate lifestyles that transcend expectations. Our designs, craftsmanship, and services redefine luxury, offering a unique and tailored one-stop destination for clients hailing from diverse corners of the globe. At ESNAAD, we don't merely envision what is; we envisage what could be, pushing boundaries and setting new benchmarks.

ESNAAD's objective is to pioneer market-leading luxury homes, strategically positioned in locations poised for regeneration. Our approach is not just professional; it's entrepreneurial in thinking and loyal in relationships. We believe in mutual benefit, seamlessly blending innovation and outstanding design to create homes and neighborhoods that stand as testaments to our commitment.



Discover ultimate  
urban elegance  
where sophistication  
meets city living in  
style





# About Mohamed Bin Rashid City, District 11

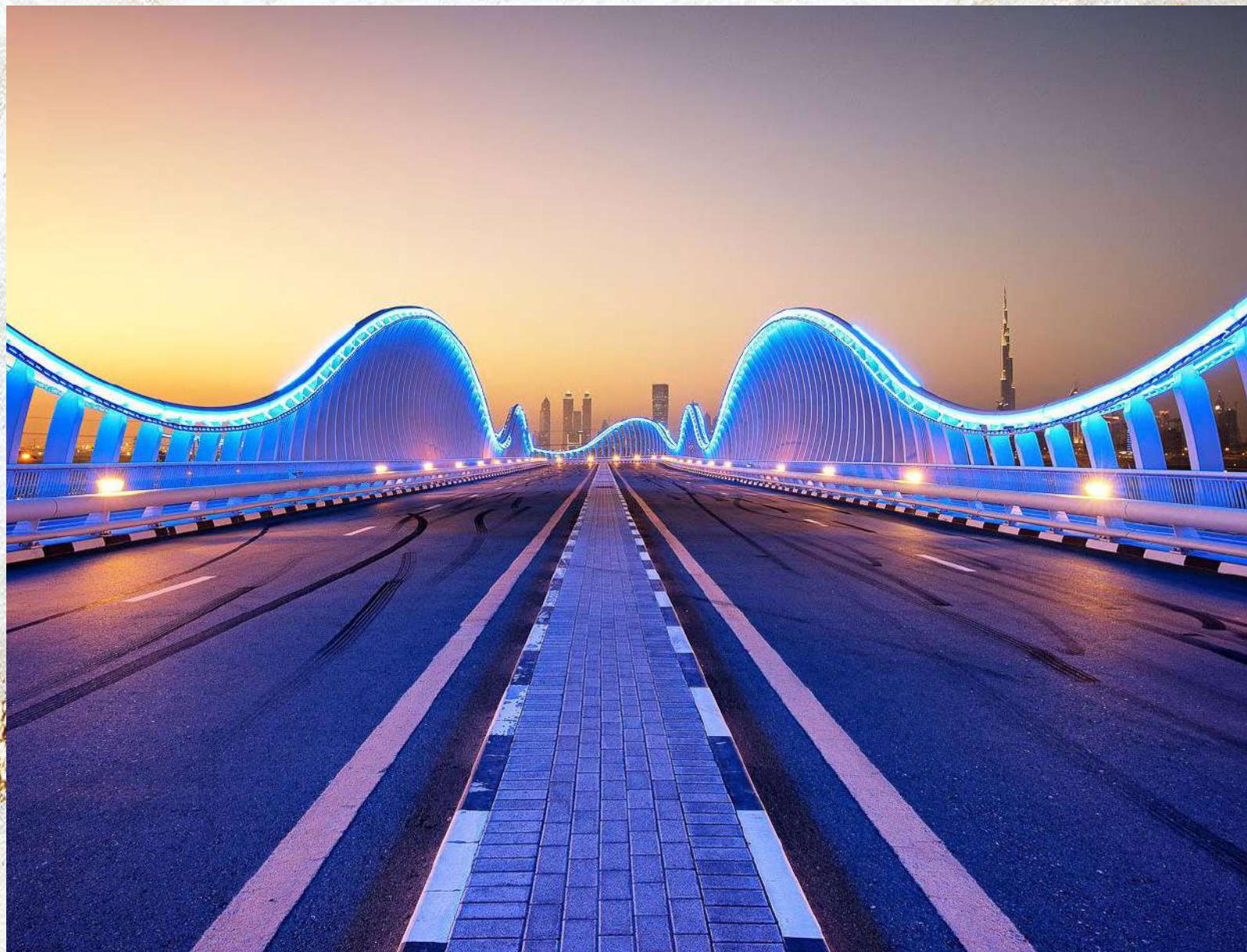
Nestled within Dubai's evolving landscape, Mohamed Bin Rashid City seamlessly blends urban vibrancy with contemporary tranquillity. With strategic connectivity at its heart, residents enjoy proximity to landmarks like Downtown Dubai and Dubai Mall, ensuring a seamless pulse to the city. Cultural richness and architectural marvels define this cosmopolitan hub, where each building is a piece of art contributing to the vibrant cityscape.

Immerse yourself in a city that cultivates community living, fostering connections and a shared sense of belonging. Mohamed Bin Rashid City, part of Dubai's visionary urban planning, is poised for further development, promising residents a stake in a vibrant future. Discover a redefined urban experience—a canvas for a life well-lived in the heart of Dubai.





# Connection to Surrounding Areas







## The Location

Situated in the bustling heart of Dubai, The Spark by ESNAAD enjoys proximity to key landmarks and destinations, offering residents seamless access to the city's pulse. The location is strategically planned for practicality and value for money, ensuring residents are just minutes away from major landmarks such as:

**Downtown Dubai: 12 minutes**

**Dubai Mall: 12 minutes**

**DIFC: 18 minutes**

**Meydan: 10 minutes**

**Kite Beach: 22 minutes**

**Mall of the Emirates: 17 minutes**

**Dubai Marina: 20 minutes**

**DXB International Airport: 15 minutes**





Za'abeel

Dubai Creek Tower

Burj Khalifa

Downtown

Business Bay

Al Khail Rd

Dubai Design District

Ras Al Khor Wildlife Sanctuary

Ras Al Khor Rd

Meydan Racecourse

Avenue Mall

Nad Al Sheba 4

NAS Sports Complex

Park

Al Ain - Dubai Rd

Sheikh Mohammed Bin Zayed Rd

# THE SPARK

By ESNAAD

Dubai Silicon Oasis





## Introduction to the Project

Discover "The Spark by ESNAAD," a visionary residential project by ESNAAD, nestled in the heart of Mohamed Bin Rashid City, District 11, Dubai Al Ain Road. This modern development showcases ESNAAD's unwavering commitment to quality, cutting-edge design, and unmatched value for money.





Innovative Design, Nature's Backdrop: A Symphony of Modern Living



# About The Project

The Spark by ESNAAD stands out with its meticulously crafted apartments, offering a perfect blend of style and functionality. Our residences are more than just living spaces; they are a canvas for contemporary living. With logical layouts and meticulous design, every apartment is a testament to our dedication to excellence.

Situated within Dubai's evolving landscape, The Spark by ESNAAD in Mohamed Bin Rashid City seamlessly integrates urban vibrancy with contemporary tranquillity. Enjoy strategic connectivity to landmarks like Downtown Dubai, Dubai Mall, and DIFC, ensuring a seamless pulse to the city.

Immerse yourself in a city that cultivates community living, fostering connections and a shared sense of belonging. Mohamed Bin Rashid City, part of Dubai's visionary urban planning, promises residents a stake in a vibrant future. The Spark by ESNAAD is poised to redefine urban living—a canvas for a life well-lived in the heart of Dubai.

Discover The Spark by ESNAAD, where every detail sparks a new chapter in contemporary luxury living.







Terrace Views That Impress, Layouts That Inspire: Your Home, Your Haven



# Strategic Living, Unmatched Value

At The Spark by ESNAAD, we go beyond the conventional to craft a living experience that is not just luxurious but also strategically planned for practicality and value for money. Our commitment is to provide residents with a home that not only reflects their style but also aligns with their practical needs, ensuring every aspect of daily life is seamlessly integrated.







A Symphony of Lights and Lines: Reshaping Cityscapes





Sleek Shapes, Luxurious Spaces: A Contemporary Symphony in Design





Well-Defined Lines, Luxurious Living: Modern Comforts Redefined





## Smart Living, Sustainable Future

In addition to practicality and value, The Spark by ESNAAD embraces smart and sustainable living. With eco-friendly commuting options, bicycle parking, and electric vehicle charging stations, residents can seamlessly integrate an environmentally conscious lifestyle into their daily routines. This commitment to sustainability not only aligns with current environmental values but also sets the stage for a greener future.

Planned for practicality and value for money, The Spark by ESNAAD is not just a residence; it's a carefully crafted living experience that aligns with the needs and aspirations of contemporary individuals seeking a balance between luxury and practicality.





Elegance Welcomes You: Step into Luxury at the Grand Entrance





A Daylight Welcome, Luxurious Vibe: Where Sunshine Meets Opulence





Luxurious Corridors, Premium Materials: Where Every Step Counts





ESNAAD

Luxury by the Pool: Where Quality and Enjoyment Convergew



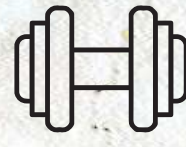
# Recreation & Lifestyle

Indulge in a lifestyle of luxury and well-being at The Spark by ESNAAD, where modern aesthetics seamlessly integrate with world-class amenities. Relax by our swimming pool, enjoy a comprehensive fitness routine in our state-of-the-art gym, and rejuvenate in the serene spa. Engage with neighbours in communal spaces, savour gourmet experiences at our exclusive café, and immerse yourself in lush greenery in our landscaped outdoor areas.

The Spark by ESNAAD fosters a sense of community with an entertainment hub, children's play area, and innovative features like bicycle parking and electric vehicle charging stations, promoting sustainable living. Experience a life where luxury meets leisure, creating a vibrant community where each moment is an invitation to live, connect, and thrive.



Swimming Pool



Gym



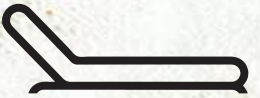
Co-working Space



Sauna & Steam Room



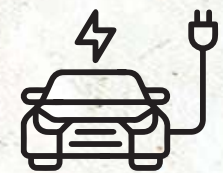
Entrance Lobby



Sunken Poolside Seating



Bicycle Parking

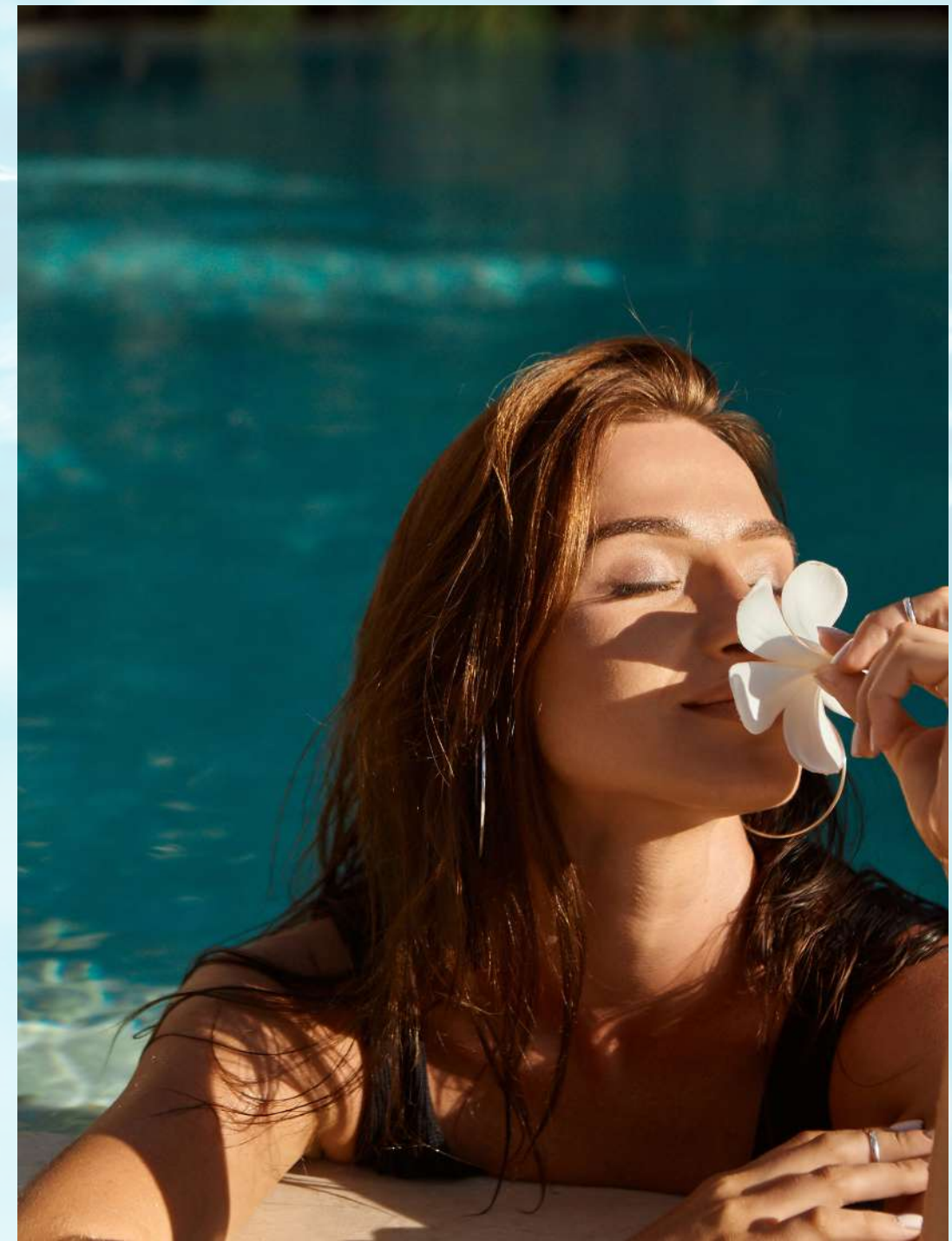


Electric Vehicle Charging Stations



Café





Live, Connect, Thrive: A Lifestyle Beyond Expectations





Wimming in Luxury: Opulent Facilities for Unmatched Comfort





Outdoor Bliss: A Relaxing Haven Next to the Sparkling Pool





Gym Luxe: Elevate Your Fitness Journey in Style





Steam Away Stress: Where Relaxation is an Art





Luxury in Steam: Sauna Facilities That Define Relaxation



# Unveiling New Standards of Luxury





# Crafting Idyllic Living Spaces

ESNAAD brings forth a vision of living that transcends mere accommodation. At The Spark by ESNAAD, our commitment to delivering an exceptional lifestyle experience is manifested in the meticulous design of our spacious one-bedroom and two-bedroom apartments. Each residence is a testament to our dedication to providing dynamic professionals with a perfect blend of comfort, sophistication, and practicality.

## **Sophisticated Spaces:**

Enter a realm where attention to detail meets contemporary elegance. The diligent design and craftsmanship of our apartments provide a logical and efficient layout, maximising spatial use and ensuring optimum comfort. The moment you step into The Spark by ESNAAD, you are welcomed into an atmosphere that resonates with luxury, promising a living experience beyond the ordinary.



**Wellness Oasis:**

Embark on a journey of relaxation and rejuvenation in our state-of-the-art wellness facilities. Take a dip in the refreshing swimming pool, unwind in the sauna, and steam room, or embark on a fitness journey in our fully equipped gym. The Spark by ESNAAD is not merely a residence; it's a wellness oasis where residents can nurture both body and mind, fostering a holistic approach to living.

**Eco-Friendly Commuting:**

Embrace sustainable living with our bicycle parking and electric vehicle charging stations. The Spark by ESNAAD is designed not just for today but with a vision for a greener tomorrow. Residents can effortlessly adopt an eco-friendly lifestyle, contributing to a healthier environment and a sustainable future.

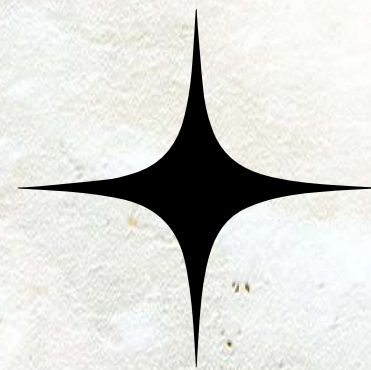
Living at The Spark by ESNAAD is an invitation to embrace a lifestyle where every detail has been considered to elevate the everyday experience. Unwind, connect, and thrive in a community that embodies the spirit of contemporary luxury. The Spark by ESNAAD – Where Life Sparks with Possibilities.

**Connected Living:**

The Spark by ESNAAD fosters a sense of community with a vibrant entrance lobby that serves as a meeting point for residents. Engage in conversations, make new connections, and experience the warmth of a community that values shared experiences. It's not just a residence; it's a place where connections are forged, and memories are made.

**Impeccable Details:**

Elevate your lifestyle with our meticulously designed apartments at The Spark by ESNAAD. Choose from a variety of thoughtfully crafted units, each promising a unique living experience. Meticulous design ensures logical layouts, maximising space and comfort. Craftsmanship and attention to detail redefine contemporary living for dynamic professionals. Your haven of comfort begins here at The Spark by ESNAAD.







Generous Spaces, Luxe Materials: A Home That Embraces You





Where Style Meets Comfort: Your Personal Sanctuary





Kitchen Elegance: Modernity and Practicality in Every Detail





Bath in Luxury: Opulence and Practicality in Every Shower





Modern Living, Practical Spaces: Embrace Comfort in Every Room





Luxury in Every Detail: A Culinary Symphony in Your Modern Kitchen





Thriving in Luxury: A Contemporary Lifestyle Redefined



# DIGITAL MOODBOARD



- 1. Travertine Boad in Reception
- 2. Modular Kitchen Carcass
- 3. Kitchen Cupboards
- 4. Kitchen Counter Top
- 5. Backsplash - Bathroom
- 6. Main Door Finish
- 7. Wardrobes and Washroom Cabinets
- 7. Room Door Finish
- 8. General Flooring and wall porcilene
- 9. Wardrobes Glass Finish



# WHY DUBAI

## **Stable Currency and Financial Hub:**

Dubai boasts a robust and stable economy with the UAE Dirham pegged to the US Dollar since 1973. This commitment to stability, maintained at a constant rate since 1997, positions Dubai as one of the most secure financial hubs globally, ensuring a reliable foundation for investors and residents alike.

## **Diverse and Inclusive Community:**

Home to over 200 nationalities, Dubai epitomizes communal harmony, diversity, and inclusion. As a cosmopolitan safe haven, it fosters a sense of belonging for residents from various cultural backgrounds, creating a rich tapestry of global experiences.

## **Open and Free Economic System:**

Dubai's open economic policies, minimal government control, and private sector regulation make it an ideal destination for Foreign Direct Investment (FDI). This open and free economic system gives Dubai a competitive edge on the global stage, attracting businesses and entrepreneurs from around the world.

## **Tax Advantages for Maximum Returns:**

Benefit from a tax-friendly environment in Dubai, offering zero income tax, zero capital gains tax, and zero wealth tax. These tax incentives create a conducive atmosphere for investors and business professionals, allowing them to maximize returns on their investments.

## **Safety and Low Crime Rates:**

Ranked as one of the world's safest countries, the UAE has developed an advanced law enforcement system, resulting in consistently low crime rates. Dubai's commitment to security ensures a peaceful living environment for all residents.

## **World-Class Healthcare Hub:**

Dubai's commitment to healthcare is exemplified by substantial investments in the sector, making it a preferred destination for health and well-being. Access to state-of-the-art medical facilities and services ensures that residents experience world-class healthcare in the heart of the city.

## **World-Class Infrastructure and Amenities:**

Dubai provides an environment where communities thrive, supported by excellent infrastructure, public transport, parks, entertainment facilities, and more. The city's continuous development ensures a high quality of life for its residents.

## **Global Connectivity:**

With direct flights to 97 countries, Dubai stands as a global aviation hub. Hosting the world's leading airlines, Dubai's airports provide easy connectivity, making international travel seamless for residents and businesses.

## **Strategic Location for Global Opportunities:**

Dubai's strategic location extends beyond its city infrastructure to include a robust legal system, public transport, parks, entertainment, and more. The city serves as a gateway to global opportunities, attracting individuals and businesses seeking a dynamic and thriving environment.







# THE SPARK

By ESNAAD

Citywalk Bldg # 1 - G07 - Al Wasl - Dubai  
Phone: 04 287 9506

Email: [customercare@esnaad.com](mailto:customercare@esnaad.com)  
Website: [esnaad.com](http://esnaad.com)