

CREEK VIEWS

BY IRAZ DEVELOPMENTS

YOUR DREAM

Space Awaits!



CREEK VIEWS

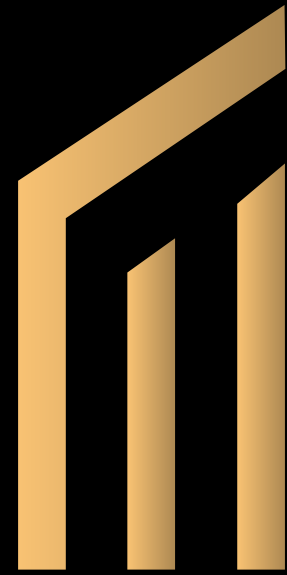
By IRAZ Developments



The magic thing about home is that it feels good to leave, and it feels even better to come back.

Wendy Wunder



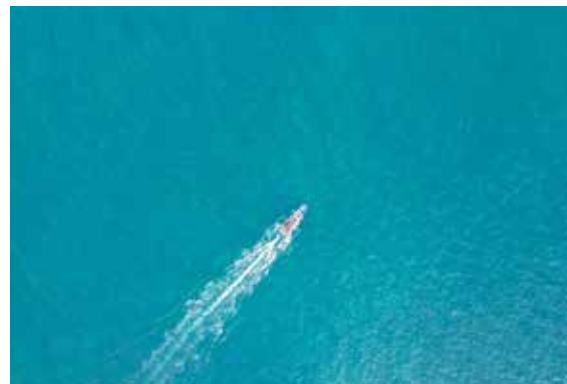


IRAZ

DEVELOPMENTS

אדג'יט







ROOF TOP

14
RESIDENTIAL
FLOORS

GROUND FLOOR

2 BASEMENT
PARKING



*Where Every Moment
Is Elevated*

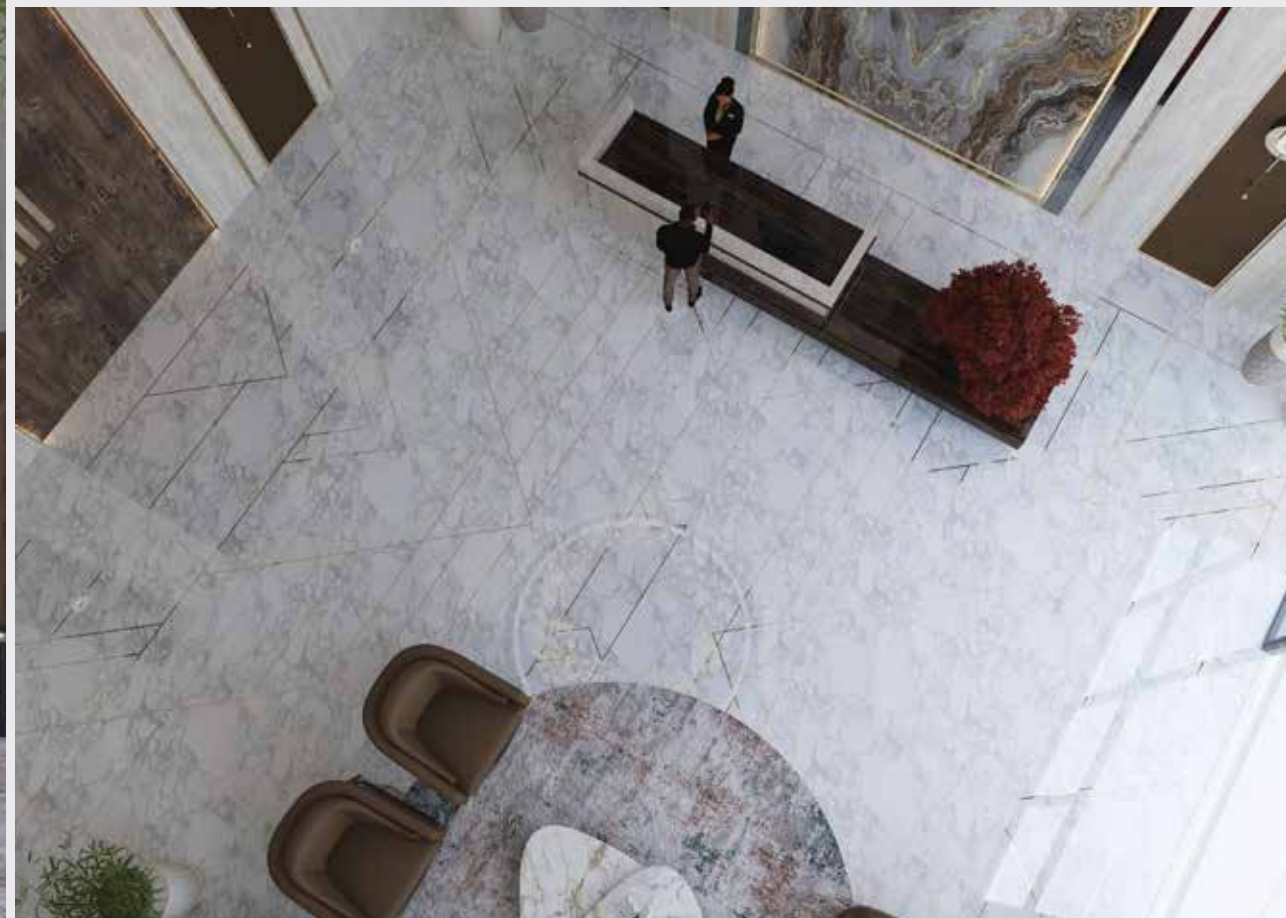


IRAZ
DEVELOPMENTS





LOBBY





 **13 FLOOR**
IRAZ

 13



13



CORRIDOR









POOL SIDE



GYM



ENTRY



LIVING ROOM



KITCHEN & DINING



BEDROOM



STUDIO





LAUNDRY





BATHROOM







Oasis of
FAMILY FUN

A family pool haven, where laughter echoes
and memories are made, creating moments that last a lifetime.



Dive into
DYNAMIC PLAY AREA

A realm where every corner sparks creativity and adventure.



Elevating Your
GARDEN PARADISE

A sanctuary where lush foliage dances in harmony,
a haven where every breath whispers the poetry of growth and renewal.



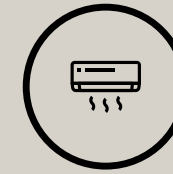
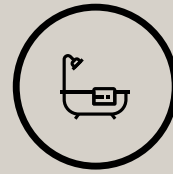
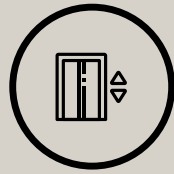
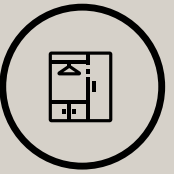
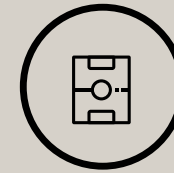
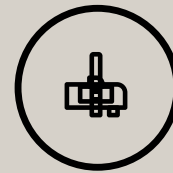
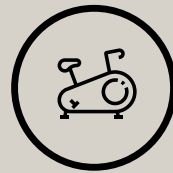
Where Every
STEP MATTERS

A meticulously designed to evoke a sense of mindfulness
and connection with nature.



Find Your
PERFECT CATCH

Embark on your ultimate fishing adventure, where every cast holds the promise of thrills and memories, waiting to be caught.



- 24/7 Security and Surveillance
- Dedicated Parking Facility
- Fitness Centre or Gym

- Swimming Pool
- Well-Maintained Common Areas
- Energy-Efficient Appliances

- Adequate Storage Spaces
- Emergency Response Systems
- Package Delivery Services

- Modern Kitchen and Bathroom Fitting
- Accessible Elevators and Staircases
- Stunning Views







Ground Floor Plan

- ① ACCESS TO PARKING LEVELS
- ② PARKING FOR PEOPLE OF DETERMINATION
- ③ LIFT LOBBY
- ④ MAIN ENTRANCE
- ⑤ BICYCLE PARKING

DUBAI CREEK

DISCLAIMER : All design, features, amenities, materials, dimensions, layout drawings are approximate and subject to change without prior notice. Actual area of the Unit may vary from the stated area; drawings not to scale. Developer reserves the right to make revisions to comply with any Applicable Law or the requirements of any Relevant Authority. For actual sizes please refer the Unit Reservation Agreement



DISCLAIMER : All design, features, amenities, materials, dimensions, layout drawings are approximate and subject to change without prior notice. Actual area of the Unit may vary from the stated area; drawings not to scale. Developer reserves the right to make revisions to comply with any Applicable Law or the requirements of any Relevant Authority. For actual sizes please refer the Unit Reservation Agreement



DISCLAIMER : All design, features, amenities, materials, dimensions, layout drawings are approximate and subject to change without prior notice. Actual area of the Unit may vary from the stated area; drawings not to scale. Developer reserves the right to make revisions to comply with any Applicable Law or the requirements of any Relevant Authority. For actual sizes please refer the Unit Reservation Agreement

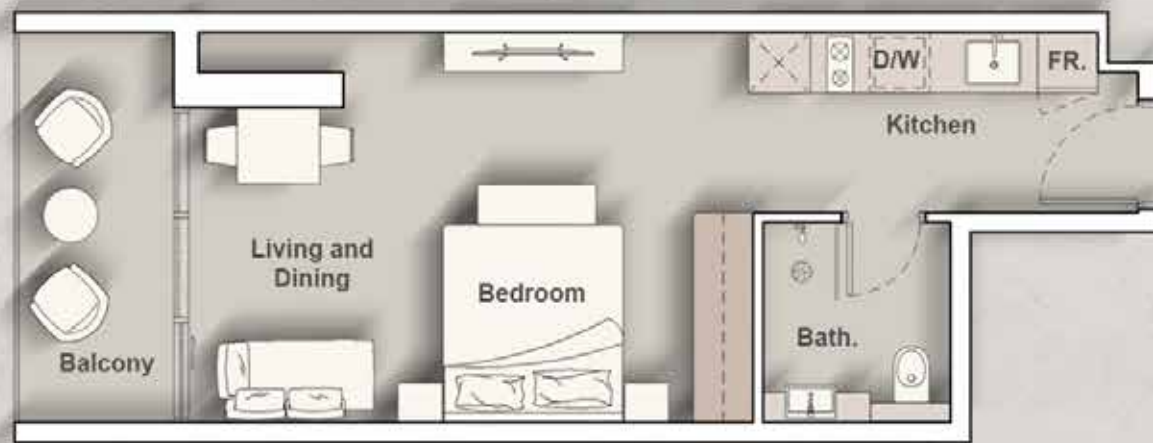


DISCLAIMER : All design, features, amenities, materials, dimensions, layout drawings are approximate and subject to change without prior notice. Actual area of the Unit may vary from the stated area; drawings not to scale. Developer reserves the right to make revisions to comply with any Applicable Law or the requirements of any Relevant Authority. For actual sizes please refer the Unit Reservation Agreement



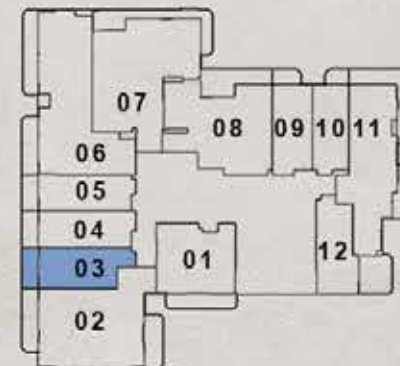
DISCLAIMER : All design, features, amenities, materials, dimensions, layout drawings are approximate and subject to change without prior notice. Actual area of the Unit may vary from the stated area; drawings not to scale. Developer reserves the right to make revisions to comply with any Applicable Law or the requirements of any Relevant Authority. For actual sizes please refer the Unit Reservation Agreement

STUDIO
TYPE A



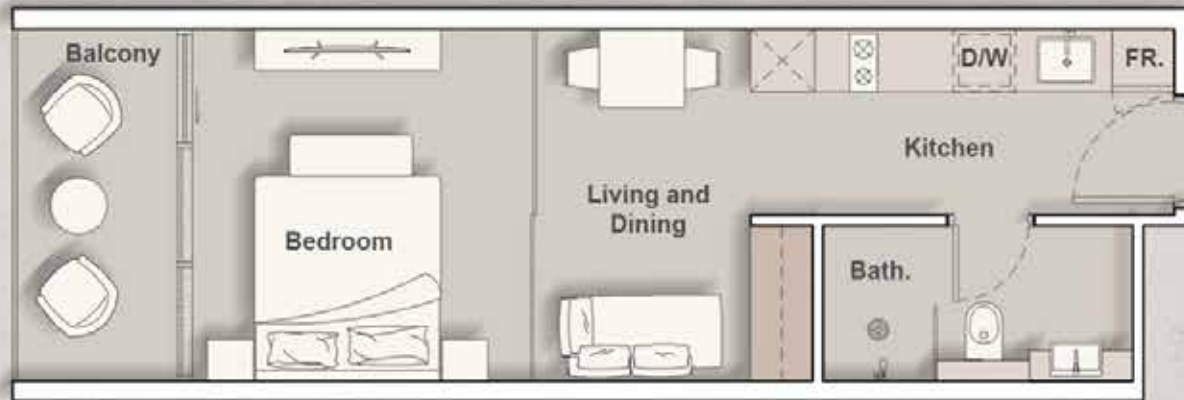
Internal Living Area : 382.98 Sq. Ft.
Outdoor Living Area : 73.30 Sq. Ft.
Total Living Area : 456.28 Sq. Ft.

2nd - 3rd Floor



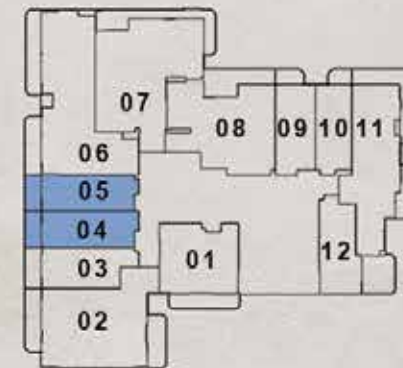
DISCLAIMER : All design, features, amenities, materials, dimensions, layout drawings are approximate and subject to change without prior notice. Actual area of the Unit may vary from the stated area; drawings not to scale. Developer reserves the right to make revisions to comply with any Applicable Law or the requirements of any Relevant Authority. For actual sizes please refer the Unit Reservation Agreement

STUDIO
TYPE B



Internal Living Area : 367.70 Sq. Ft.
Outdoor Living Area : 64.05 Sq. Ft.
Total Living Area : 431.74 Sq. Ft.

2nd - 3rd Floor



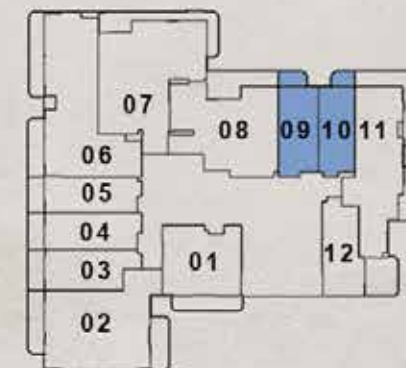
DISCLAIMER : All design, features, amenities, materials, dimensions, layout drawings are approximate and subject to change without prior notice. Actual area of the Unit may vary from the stated area; drawings not to scale. Developer reserves the right to make revisions to comply with any Applicable Law or the requirements of any Relevant Authority. For actual sizes please refer the Unit Reservation Agreement

STUDIO
TYPE C



Internal Living Area : 377.38 Sq. Ft.
Outdoor Living Area : 44.99 Sq. Ft.
Total Living Area : 422.38 Sq. Ft.

2nd - 3rd Floor



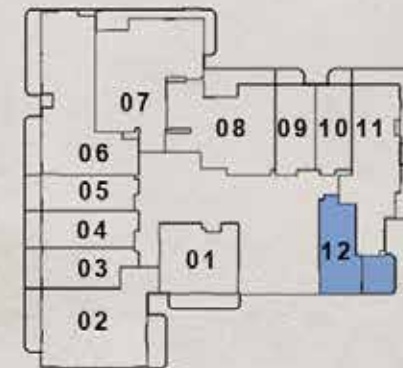
DISCLAIMER : All design, features, amenities, materials, dimensions, layout drawings are approximate and subject to change without prior notice. Actual area of the Unit may vary from the stated area; drawings not to scale. Developer reserves the right to make revisions to comply with any Applicable Law or the requirements of any Relevant Authority. For actual sizes please refer the Unit Reservation Agreement

STUDIO
TYPE D



Internal Living Area : **389.65 Sq. Ft.**
Outdoor Living Area : **133.69 Sq. Ft.**
Total Living Area : **523.34 Sq. Ft.**

2nd - 3rd Floor



DISCLAIMER : All design, features, amenities, materials, dimensions, layout drawings are approximate and subject to change without prior notice. Actual area of the Unit may vary from the stated area; drawings not to scale. Developer reserves the right to make revisions to comply with any Applicable Law or the requirements of any Relevant Authority. For actual sizes please refer the Unit Reservation Agreement

1 BEDROOM

TYPE A



Internal Living Area : 571.46 Sq. Ft.
Outdoor Living Area : 112.70 Sq. Ft.
Total Living Area : 684.15 Sq. Ft.

1st Floor



2nd - 3rd Floor



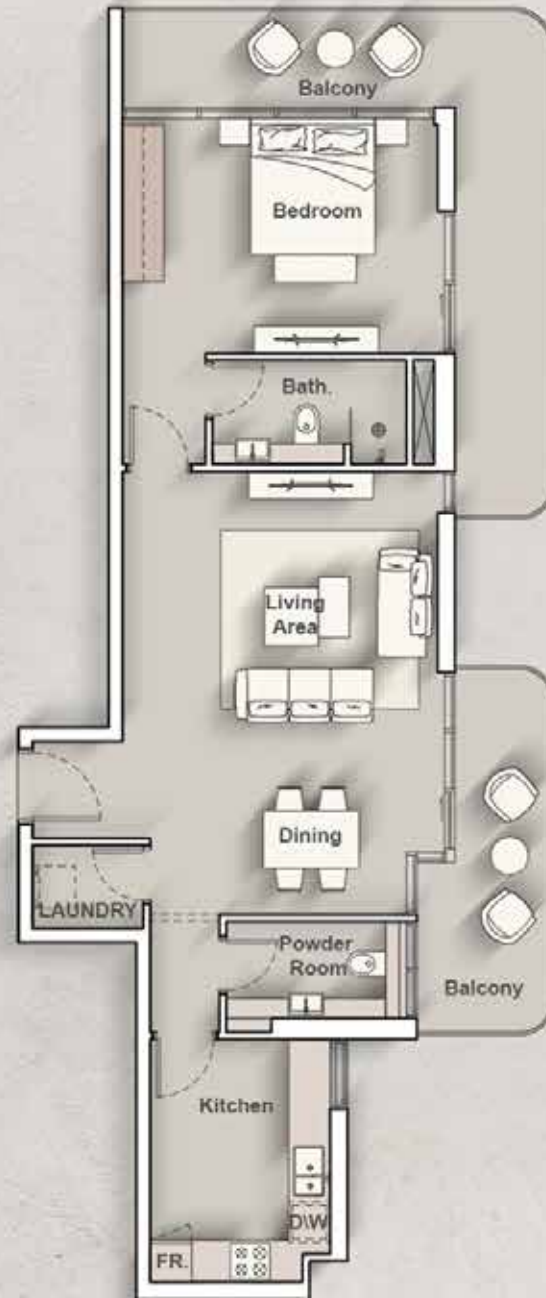
4th - 13th Floor



DISCLAIMER : All design, features, amenities, materials, dimensions, layout drawings are approximate and subject to change without prior notice. Actual area of the Unit may vary from the stated area; drawings not to scale. Developer reserves the right to make revisions to comply with any Applicable Law or the requirements of any Relevant Authority. For actual sizes please refer the Unit Reservation Agreement

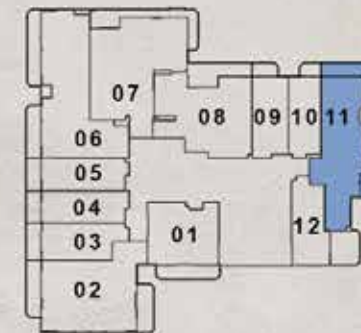
1 BEDROOM

TYPE B



Internal Living Area : 812.24 Sq. Ft.
Outdoor Living Area : 298.27 Sq. Ft.
Total Living Area : 1110.51 Sq. Ft.

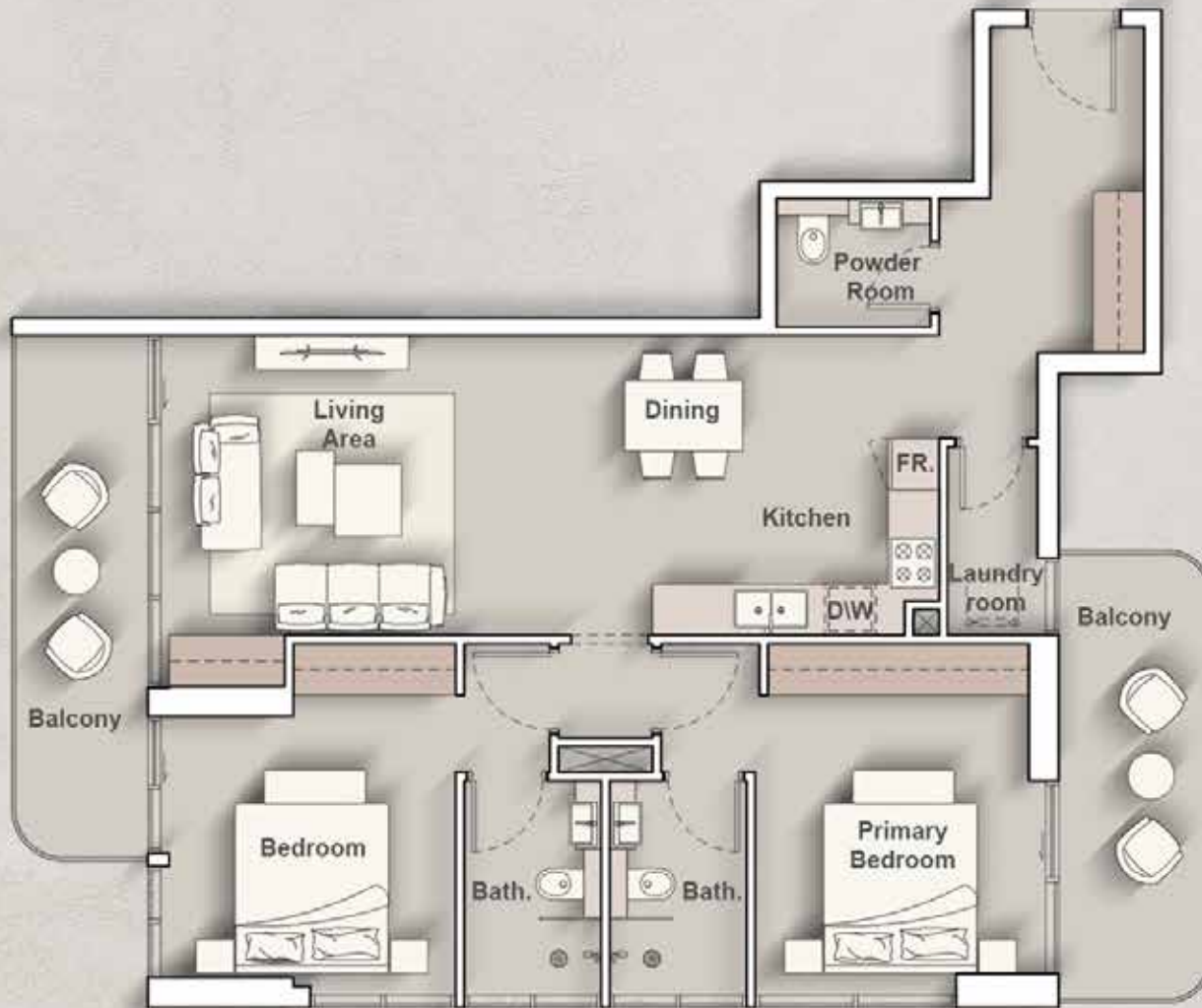
2nd - 3rd Floor



DISCLAIMER : All design, features, amenities, materials, dimensions, layout drawings are approximate and subject to change without prior notice. Actual area of the Unit may vary from the stated area; drawings not to scale. Developer reserves the right to make revisions to comply with any Applicable Law or the requirements of any Relevant Authority. For actual sizes please refer the Unit Reservation Agreement

2 BEDROOM

TYPE A



Internal Living Area : 1008.69 Sq. Ft.
Outdoor Living Area : 216.68 Sq. Ft.
Total Living Area : 1225.36 Sq. Ft.

1st Floor



2nd - 3rd Floor



4th - 13th Floor



DISCLAIMER : All design, features, amenities, materials, dimensions, layout drawings are approximate and subject to change without prior notice. Actual area of the Unit may vary from the stated area; drawings not to scale. Developer reserves the right to make revisions to comply with any Applicable Law or the requirements of any Relevant Authority. For actual sizes please refer the Unit Reservation Agreement

2 BEDROOM

TYPE B



Internal Living Area : 1117.83 Sq. Ft.
Outdoor Living Area : 200.21 Sq. Ft.
Total Living Area : 1318.04 Sq. Ft.

1st Floor



4th - 13th Floor



DISCLAIMER : All design, features, amenities, materials, dimensions, layout drawings are approximate and subject to change without prior notice. Actual area of the Unit may vary from the stated area; drawings not to scale. Developer reserves the right to make revisions to comply with any Applicable Law or the requirements of any Relevant Authority. For actual sizes please refer the Unit Reservation Agreement

2 BEDROOM

TYPE C



Internal Living Area : 1095.77 Sq. Ft.
Outdoor Living Area : 236.38 Sq. Ft.
Total Living Area : 1332.14 Sq. Ft.

1st Floor



2nd - 3rd Floor



4th - 13th Floor



DISCLAIMER : All design, features, amenities, materials, dimensions, layout drawings are approximate and subject to change without prior notice. Actual area of the Unit may vary from the stated area; drawings not to scale. Developer reserves the right to make revisions to comply with any Applicable Law or the requirements of any Relevant Authority. For actual sizes please refer the Unit Reservation Agreement

2 BEDROOM

TYPE D



Internal Living Area : 1108.04 Sq. Ft.
 Outdoor Living Area : 193.97 Sq. Ft.
 Total Living Area : 1302.00 Sq. Ft.

1st Floor



2nd - 3rd Floor



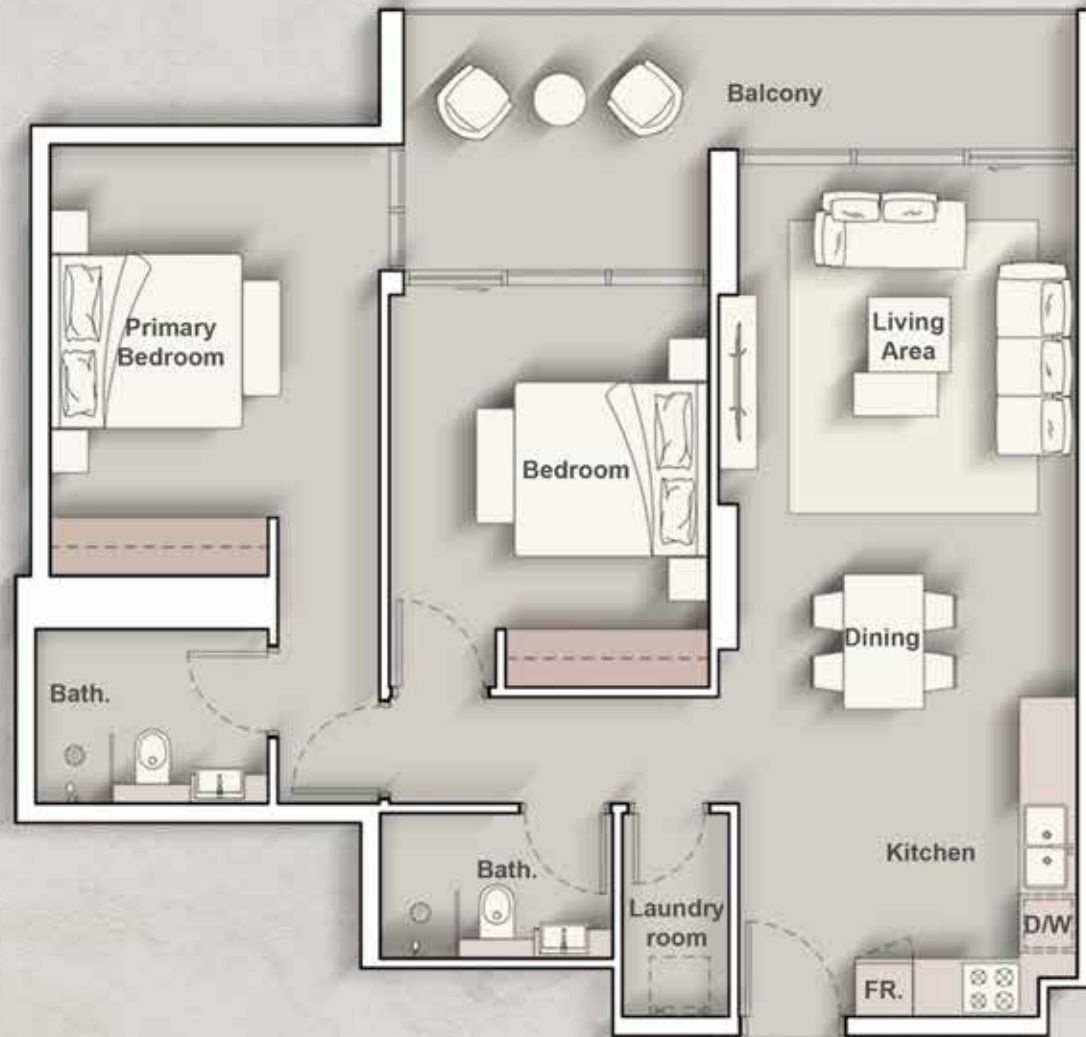
4th - 13th Floor



DISCLAIMER : All design, features, amenities, materials, dimensions, layout drawings are approximate and subject to change without prior notice. Actual area of the Unit may vary from the stated area; drawings not to scale. Developer reserves the right to make revisions to comply with any Applicable Law or the requirements of any Relevant Authority. For actual sizes please refer the Unit Reservation Agreement

2 BEDROOM

TYPE E



Internal Living Area : 907.07 Sq. Ft.
Outdoor Living Area : 160.60 Sq. Ft.
Total Living Area : 1067.67 Sq. Ft.

1st Floor



2nd - 3rd Floor



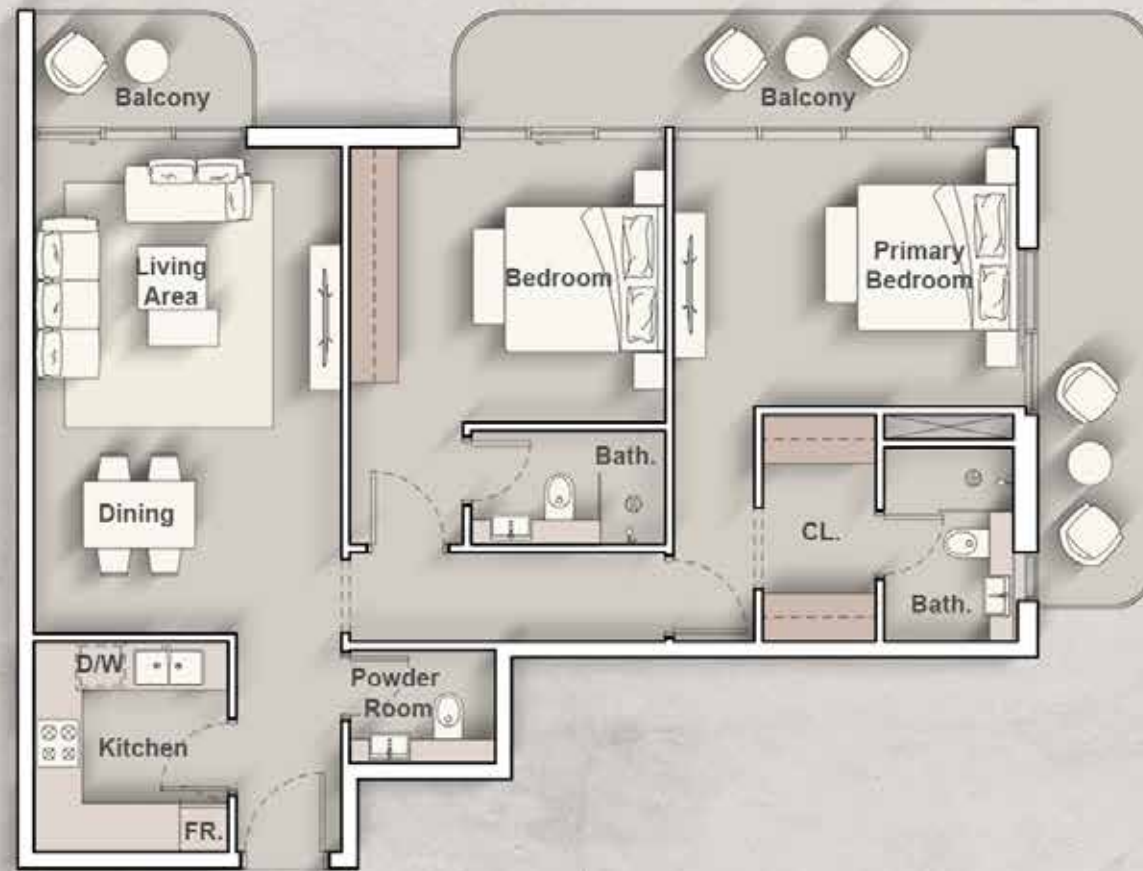
4th - 13th Floor



DISCLAIMER : All design, features, amenities, materials, dimensions, layout drawings are approximate and subject to change without prior notice. Actual area of the Unit may vary from the stated area; drawings not to scale. Developer reserves the right to make revisions to comply with any Applicable Law or the requirements of any Relevant Authority. For actual sizes please refer the Unit Reservation Agreement

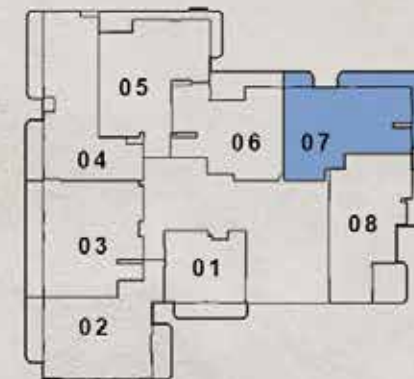
2 BEDROOM

TYPE F



Internal Living Area : **987.16 Sq. Ft.**
Outdoor Living Area : **280.29 Sq. Ft.**
Total Living Area : **1267.45 Sq. Ft.**

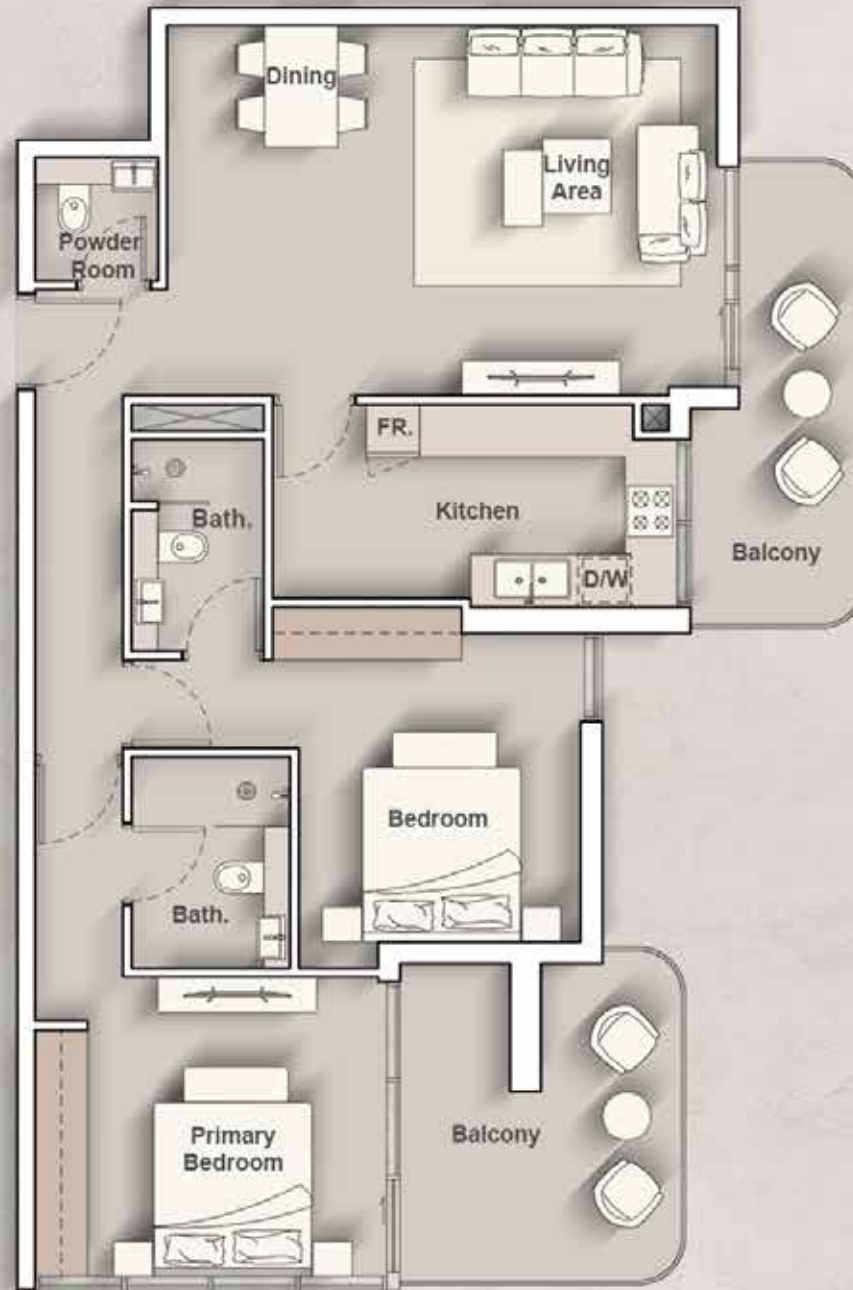
4th - 13th Floor



DISCLAIMER : All design, features, amenities, materials, dimensions, layout drawings are approximate and subject to change without prior notice. Actual area of the Unit may vary from the stated area; drawings not to scale. Developer reserves the right to make revisions to comply with any Applicable Law or the requirements of any Relevant Authority. For actual sizes please refer the Unit Reservation Agreement

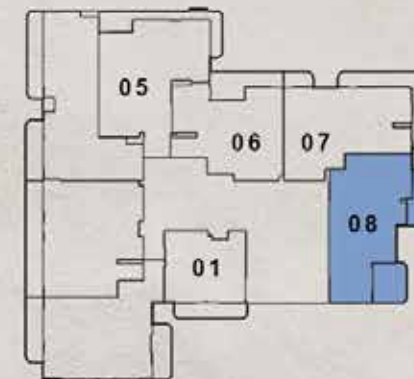
2 BEDROOM

TYPE G



Internal Living Area	:	979.73	Sq. Ft.
Outdoor Living Area	:	234.33	Sq. Ft.
Total Living Area	:	1214.06	Sq. Ft.

4th - 13th Floor



DISCLAIMER : All design, features, amenities, materials, dimensions, layout drawings are approximate and subject to change without prior notice. Actual area of the Unit may vary from the stated area; drawings not to scale. Developer reserves the right to make revisions to comply with any Applicable Law or the requirements of any Relevant Authority. For actual sizes please refer the Unit Reservation Agreement

PENTHOUSE A

4 BEDROOM+MAID



Internal Living Area : 2313.38 Sq. Ft.
Outdoor Living Area : 852.50 Sq. Ft.
Total Living Area : 3165.88 Sq. Ft.

14th FLOOR



DISCLAIMER : All design, features, amenities, materials, dimensions, layout drawings are approximate and subject to change without prior notice. Actual area of the Unit may vary from the stated area; drawings not to scale. Developer reserves the right to make revisions to comply with any Applicable Law or the requirements of any Relevant Authority. For actual sizes please refer the Unit Reservation Agreement

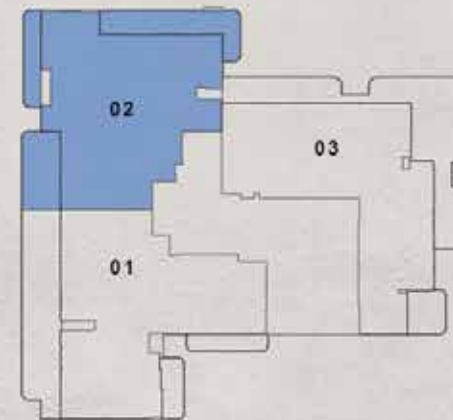
PENTHOUSE B

4 BEDROOM+MAID



Internal Living Area : 2187.12 Sq. Ft.
Outdoor Living Area : 690.50 Sq. Ft.
Total Living Area : 2877.62 Sq. Ft.

14th FLOOR



DISCLAIMER : All design, features, amenities, materials, dimensions, layout drawings are approximate and subject to change without prior notice. Actual area of the Unit may vary from the stated area; drawings not to scale. Developer reserves the right to make revisions to comply with any Applicable Law or the requirements of any Relevant Authority. For actual sizes please refer the Unit Reservation Agreement

PENTHOUSE C

4 BEDROOM+MAID

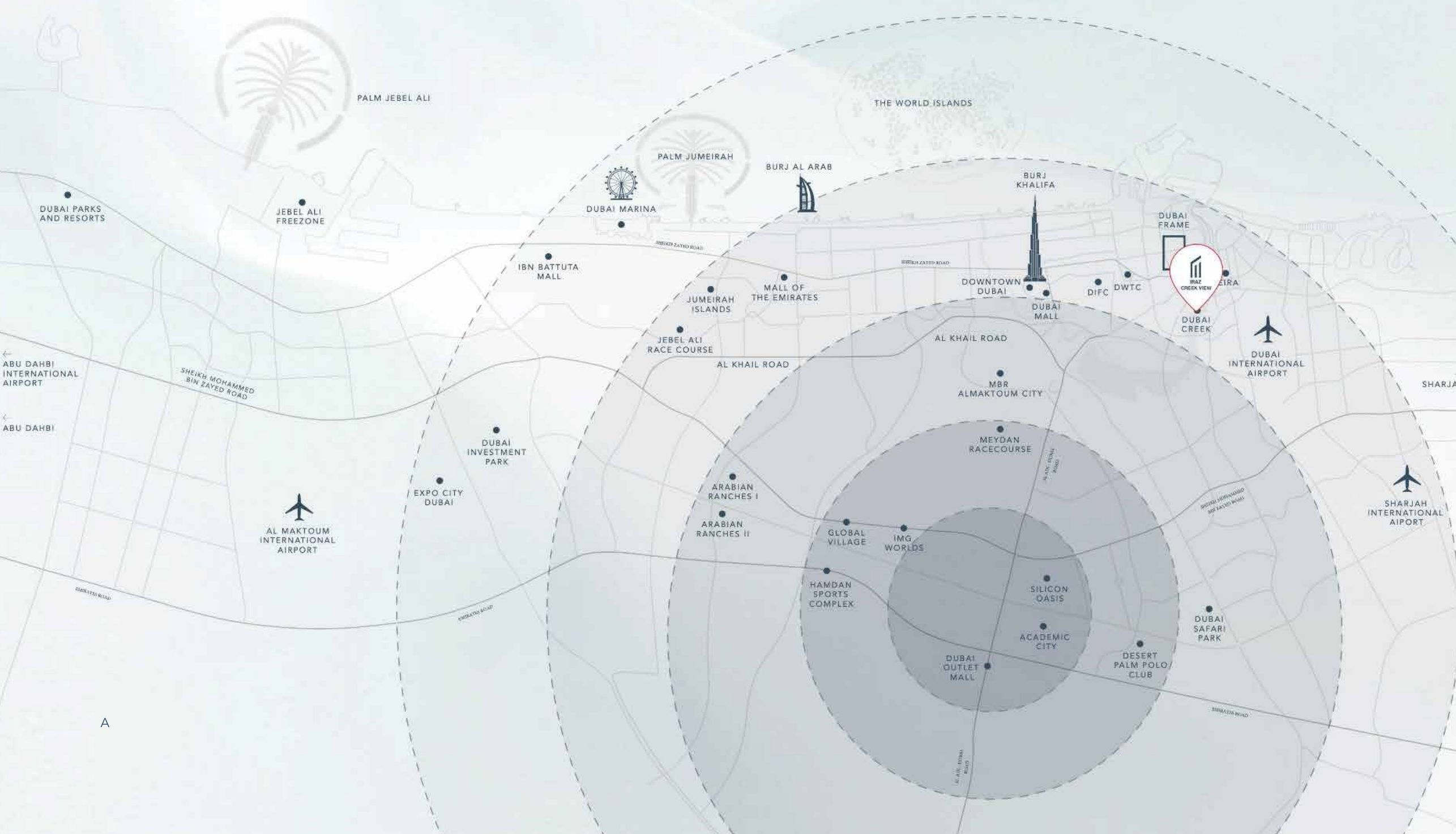


Internal Living Area	:	2250.52 Sq. Ft.
Outdoor Living Area	:	1091.46 Sq. Ft.
Total Living Area	:	3341.98 Sq. Ft.

14th FLOOR




DISCLAIMER : All design, features, amenities, materials, dimensions, layout drawings are approximate and subject to change without prior notice. Actual area of the Unit may vary from the stated area; drawings not to scale. Developer reserves the right to make revisions to comply with any Applicable Law or the requirements of any Relevant Authority. For actual sizes please refer the Unit Reservation Agreement




A

 Adjacent To Dubai Creek

 10 Minutes to Downtown Dubai

 10 Minutes to Dubai Mall

 10 Minutes to Dubai International Airport

