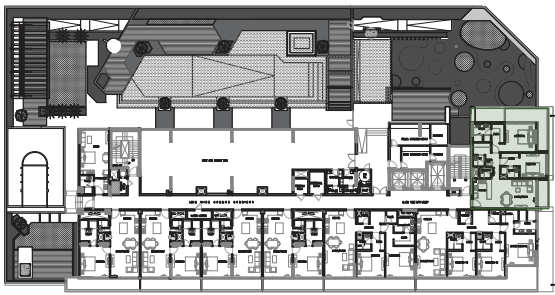


**UNIT 101 - 2 BEDROOM**



FIRST FLOOR

**2 BEDROOM**

UNIT No : First Floor	101	
Suite Area	1058.09	sq. ft.
Terrace/Balcony Area	232.07	sq. ft.
Total Sellable Area	1290.16	sq. ft.

Disclaimer : all pictures, plans, layouts, information, data and details included in this brochure are indicative only and may change at any time up to the final "as built" status in accordance with the final designs of the project, regulatory approvals and planning permissions.



THE GROVE

by IMAN



**UNIT 102 - 3 BEDROOM**



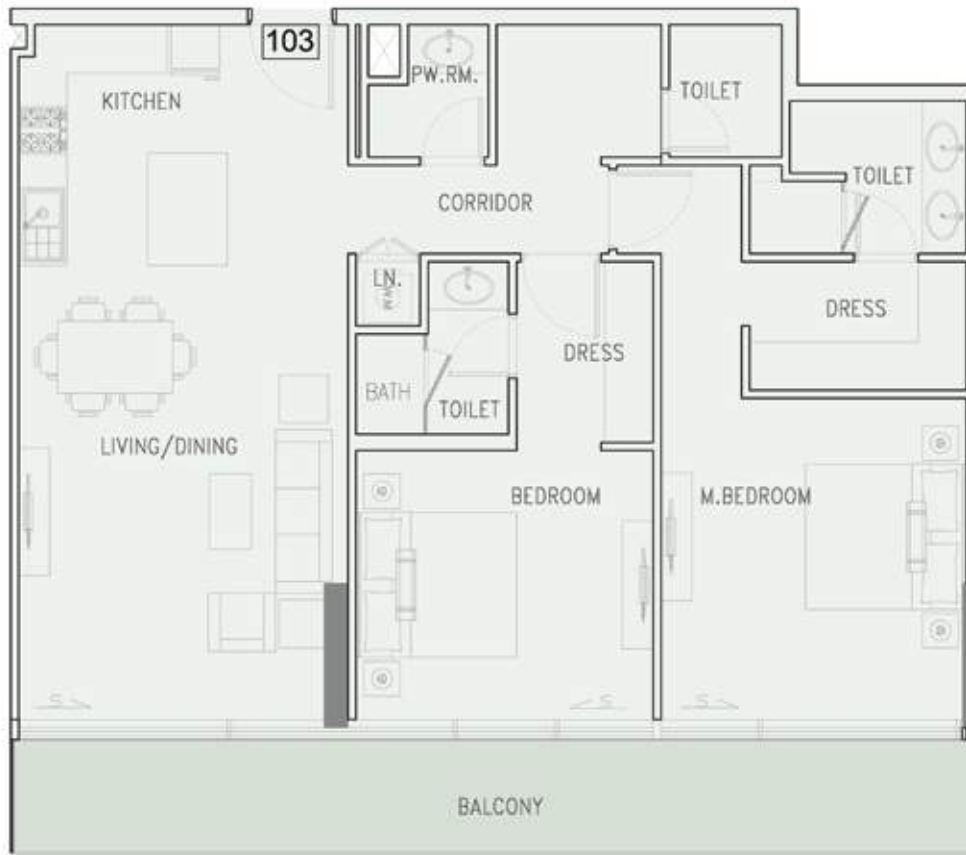
**3 BEDROOM**

UNIT No : First Floor	102
Suite Area	1444.52 sq. ft.
Terrace/Balcony Area	337.45 sq. ft.
Total Sellable Area	1781.97 sq. ft.

Disclaimer : all pictures, plans, layouts, information, data and details included in this brochure are indicative only and may change at any time up to the final "as built" status in accordance with the final designs of the project, regulatory approvals and planning permissions.



THE GROVE  
by IMAN



**UNIT 103 - 2 BEDROOM**



**2 BEDROOM**

UNIT No : First Floor	103	
Suite Area	1123.75	sq. ft.
Terrace/Balcony Area	196.66	sq. ft.
Total Sellable Area	1320.41	sq. ft.

Disclaimer : all pictures, plans, layouts, information, data and details included in this brochure are indicative only and may change at any time up to the final "as built" status in accordance with the final designs of the project, regulatory approvals and planning permissions.



THE GROVE

by IMAN



**UNIT 104 - 1 BEDROOM**



**1 BEDROOM**

UNIT No : First Floor	104	
Suite Area	704.28	sq. ft.
Terrace/Balcony Area	131.11	sq. ft.
Total Sellable Area	835.39	sq. ft.

Disclaimer : all pictures, plans, layouts, information, data and details included in this brochure are indicative only and may change at any time up to the final "as built" status in accordance with the final designs of the project, regulatory approvals and planning permissions.



THE GROVE

by IMAN



**UNIT 105 - 1 BEDROOM**



**1 BEDROOM**

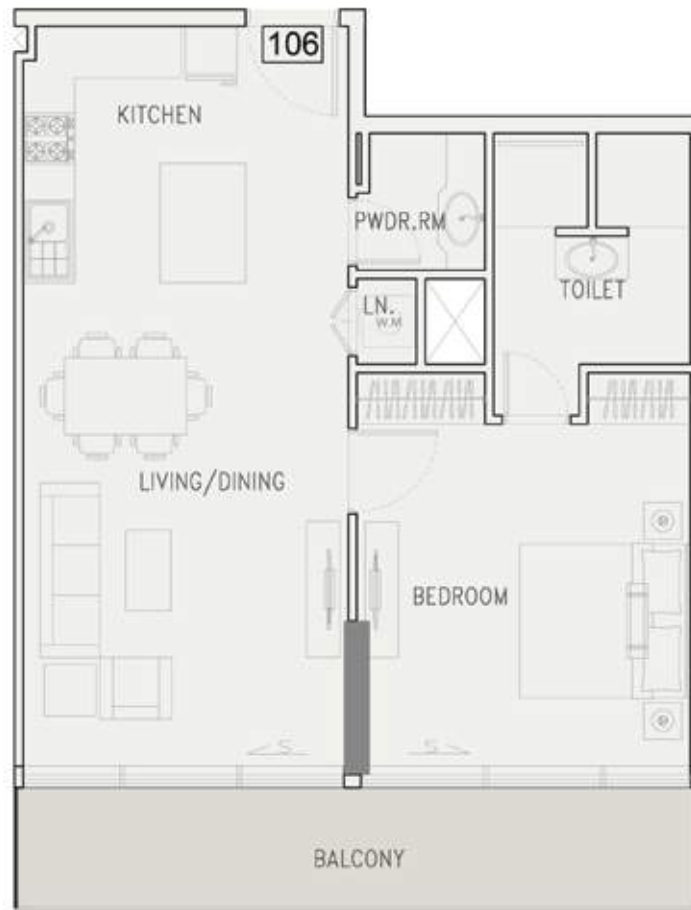
UNIT No : First Floor	105	
Suite Area	704.28	sq. ft.
Terrace/Balcony Area	131.11	sq. ft.
Total Sellable Area	835.39	sq. ft.

Disclaimer : all pictures, plans, layouts, information, data and details included in this brochure are indicative only and may change at any time up to the final "as built" status in accordance with the final designs of the project, regulatory approvals and planning permissions.

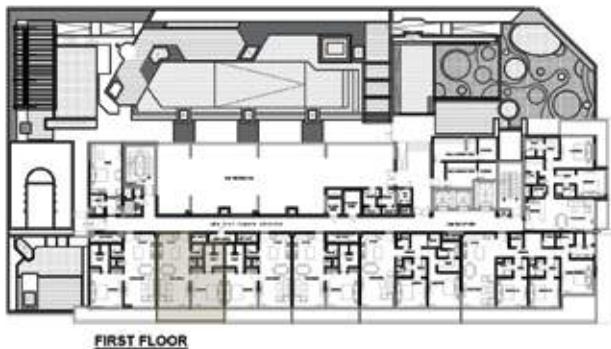


THE GROVE

by IMAN



**UNIT 106 - 1 BEDROOM**



FIRST FLOOR

**1 BEDROOM**

UNIT No : First Floor	106	
Suite Area	704.28	sq. ft.
Terrace/Balcony Area	131.11	sq. ft.
Total Sellable Area	835.39	sq. ft.

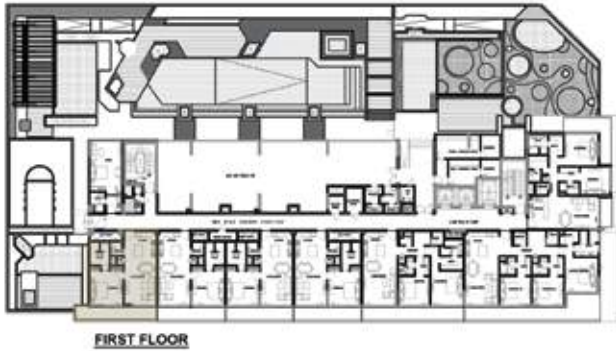
Disclaimer : all pictures, plans, layouts, information, data and details included in this brochure are indicative only and may change at any time up to the final "as built" status in accordance with the final designs of the project, regulatory approvals and planning permissions.



THE GROVE  
by IMAN



**UNIT 107 - 1 BEDROOM**



FIRST FLOOR

**1 BEDROOM**

UNIT No : First Floor	107	
Suite Area	697.82	sq. ft.
Terrace/Balcony Area	162.97	sq. ft.
Total Sellable Area	860.79	sq. ft.

Disclaimer : all pictures, plans, layouts, information, data and details included in this brochure are indicative only and may change at any time up to the final "as built" status in accordance with the final designs of the project, regulatory approvals and planning permissions.

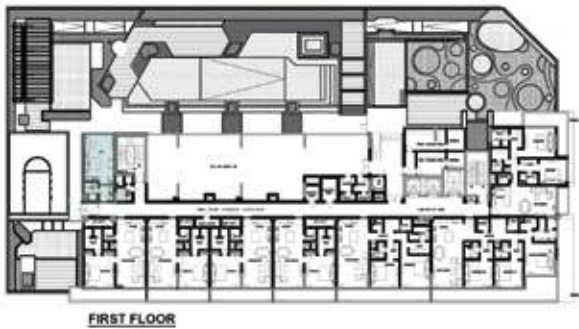


THE GROVE

by IMAN



**UNIT 108 - STUDIO**



**STUDIO**

UNIT No : First Floor	108	
Suite Area	361.13	sq. ft.
Terrace/Balcony Area	--	
Total Sellable Area	361.13	sq. ft.

Disclaimer : all pictures, plans, layouts, information, data and details included in this brochure are indicative only and may change at any time up to the final "as built" status in accordance with the final designs of the project, regulatory approvals and planning permissions.

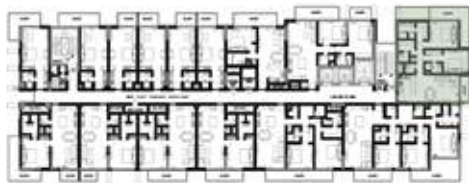


**THE GROVE**  
by IMAN





**UNIT 201 - 2 BEDROOM**



2ND FLOOR PLAN

**2 BEDROOM**

UNIT No : 2nd Floor	201	
Suite Area	1057.98	sq. ft.
Terrace/Balcony Area	220.88	sq. ft.
Total Sellable Area	1278.86	sq. ft.

Disclaimer : all pictures, plans, layouts, information, data and details included in this brochure are indicative only and may change at any time up to the final "as built" status in accordance with the final designs of the project, regulatory approvals and planning permissions.



THE GROVE

by IMAN



**UNIT 202 - 3 BEDROOM**

**3 BEDROOM**

UNIT No : 2nd Floor	202	
Suite Area	1442.90	sq. ft.
Terrace/Balcony Area	262.96	sq. ft.
Total Sellable Area	1705.86	sq. ft.



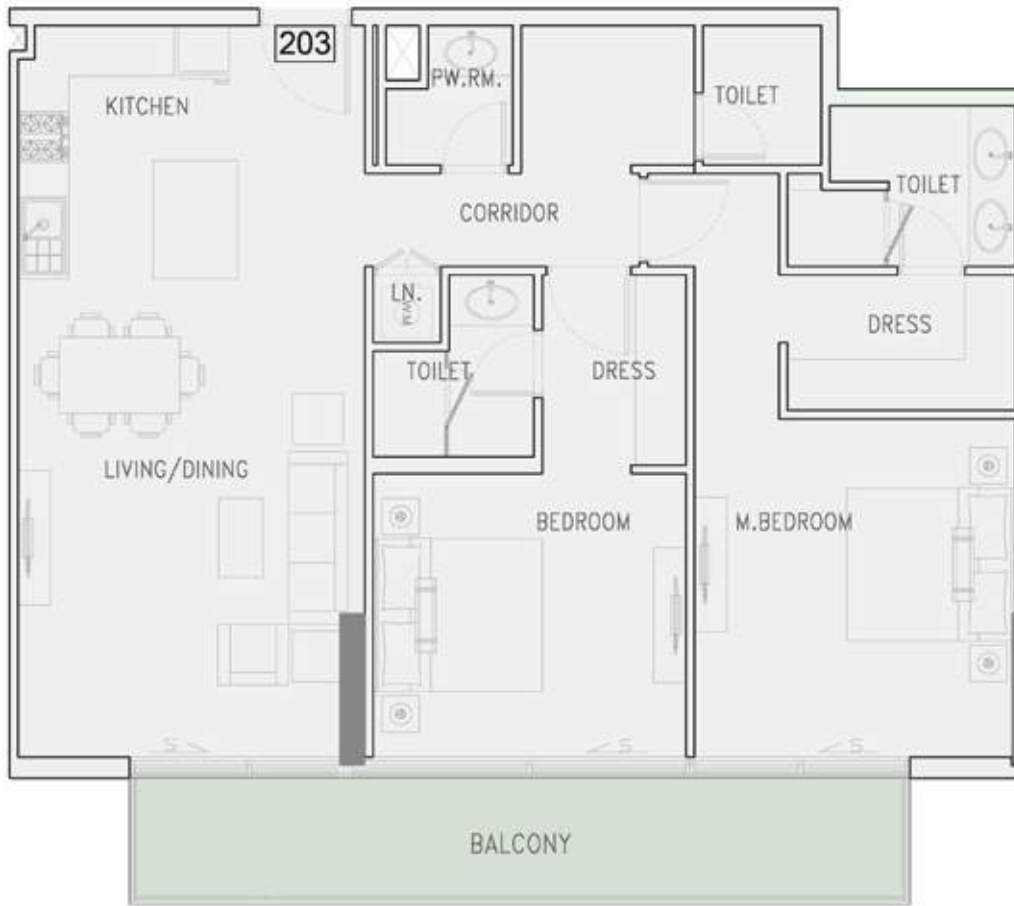
2ND FLOOR PLAN

Disclaimer : all pictures, plans, layouts, information, data and details included in this brochure are indicative only and may change at any time up to the final "as built" status in accordance with the final designs of the project, regulatory approvals and planning permissions.



THE GROVE

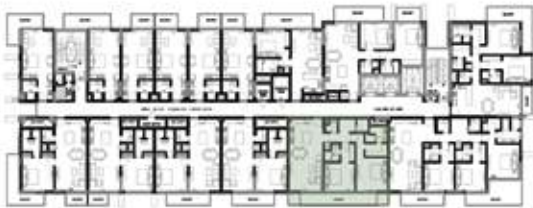
by IMAN



**UNIT 203 - 2 BEDROOM**

**2 BEDROOM**

UNIT No : 2nd Floor Plan	203
Suite Area	1121.60 sq. ft.
Terrace/Balcony Area	145.64 sq. ft.
Total Sellable Area	1267.24 sq. ft.



2ND FLOOR PLAN

Disclaimer : all pictures, plans, layouts, information, data and details included in this brochure are indicative only and may change at any time up to the final "as built" status in accordance with the final designs of the project, regulatory approvals and planning permissions.

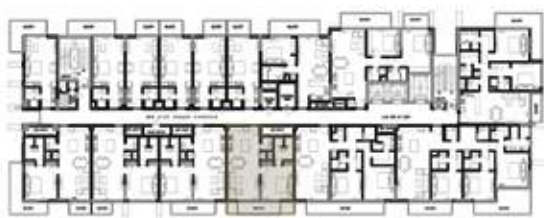


THE GROVE

by IMAN



**UNIT 204 - 1 BEDROOM**



2ND FLOOR PLAN

**1 BEDROOM**

UNIT No : 2nd Floor Plan	204
Suite Area	699.98 sq. ft.
Terrace/Balcony Area	81.91 sq. ft.
Total Sellable Area	781.89 sq. ft.

Disclaimer : all pictures, plans, layouts, information, data and details included in this brochure are indicative only and may change at any time up to the final "as built" status in accordance with the final designs of the project, regulatory approvals and planning permissions.



THE GROVE

by IMAN



**UNIT 205 - 1 BEDROOM**



2ND FLOOR PLAN

**1 BEDROOM**

UNIT No : 2nd Floor Plan	205
Suite Area	699.98 sq. ft.
Terrace/Balcony Area	86.65 sq. ft.
Total Sellable Area	786.63 sq. ft.

Disclaimer : all pictures, plans, layouts, information, data and details included in this brochure are indicative only and may change at any time up to the final "as built" status in accordance with the final designs of the project, regulatory approvals and planning permissions.

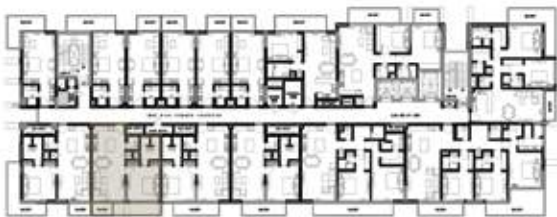


THE GROVE

by IMAN



**UNIT 206 - 1 BEDROOM**



**2ND FLOOR PLAN**

**1 BEDROOM**

UNIT No : 2nd Floor Plan	206
Suite Area	699.65 sq. ft.
Terrace/Balcony Area	39.83 sq. ft.
<b>Total Sellable Area</b>	<b>739.48 sq. ft.</b>

Disclaimer : all pictures, plans, layouts, information, data and details included in this brochure are indicative only and may change at any time up to the final "as built" status in accordance with the final designs of the project, regulatory approvals and planning permissions.

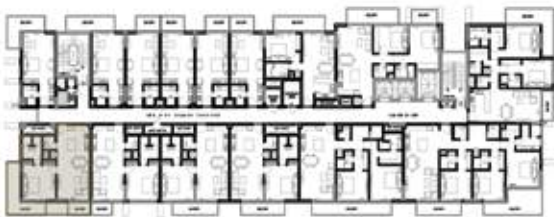


**THE GROVE**

by IMAN



**UNIT 207 - 1 BEDROOM**



**2ND FLOOR PLAN**

**1 BEDROOM**

UNIT No : 2nd Floor Plan	207	
Suite Area	697.61	sq. ft.
Terrace/Balcony Area	197.95	sq. ft.
Total Sellable Area	895.56	sq. ft.

Disclaimer : all pictures, plans, layouts, information, data and details included in this brochure are indicative only and may change at any time up to the final "as built" status in accordance with the final designs of the project, regulatory approvals and planning permissions.



THE GROVE

by IMAN



**UNIT 208 - STUDIO**



2ND FLOOR PLAN

**STUDIO**

UNIT No : 2nd Floor	208	
Suite Area	362.96	sq. ft.
Terrace/Balcony Area	114.20	sq. ft.
Total Sellable Area	477.16	sq. ft.

Disclaimer : all pictures, plans, layouts, information, data and details included in this brochure are indicative only and may change at any time up to the final "as built" status in accordance with the final designs of the project, regulatory approvals and planning permissions.



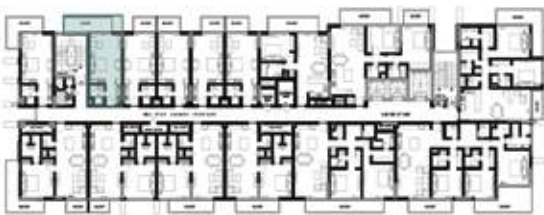
THE GROVE

by IMAN





**UNIT 209 - STUDIO**



2ND FLOOR PLAN

**STUDIO**

UNIT No : 2nd Floor	209	
Suite Area	363.28	sq. ft.
Terrace/Balcony Area	114.10	sq. ft.
Total Sellable Area	477.38	sq. ft.

Disclaimer : all pictures, plans, layouts, information, data and details included in this brochure are indicative only and may change at any time up to the final "as built" status in accordance with the final designs of the project, regulatory approvals and planning permissions.



THE GROVE

by IMAN



**UNIT 210 - STUDIO**



2ND FLOOR PLAN

**STUDIO**

UNIT No : 2nd Floor	210	
Suite Area	360.27	sq. ft.
Terrace/Balcony Area	53.93	sq. ft.
Total Sellable Area	414.20	sq. ft.

Disclaimer : all pictures, plans, layouts, information, data and details included in this brochure are indicative only and may change at any time up to the final "as built" status in accordance with the final designs of the project, regulatory approvals and planning permissions.



THE GROVE

by IMAN



**UNIT 211 - STUDIO**



2ND FLOOR PLAN

**STUDIO**

UNIT No : 2nd Floor	211	
Suite Area	358.54	sq. ft.
Terrace/Balcony Area	54.79	sq. ft.
Total Sellable Area	413.33	sq. ft.

Disclaimer : all pictures, plans, layouts, information, data and details included in this brochure are indicative only and may change at any time up to the final "as built" status in accordance with the final designs of the project, regulatory approvals and planning permissions.



THE GROVE

by IMAN



**UNIT 212 - STUDIO**

**STUDIO**



2ND FLOOR PLAN

UNIT No : 2nd Floor	212	
Suite Area	360.27	sq. ft.
Terrace/Balcony Area	53.93	sq. ft.
Total Sellable Area	414.20	sq. ft.

Disclaimer : all pictures, plans, layouts, information, data and details included in this brochure are indicative only and may change at any time up to the final "as built" status in accordance with the final designs of the project, regulatory approvals and planning permissions.



THE GROVE

by IMAN



**UNIT 213 - STUDIO**



2ND FLOOR PLAN

**STUDIO**

UNIT No : 2nd Floor	213	
Suite Area	360.05	sq. ft.
Terrace/Balcony Area	54.79	sq. ft.
Total Sellable Area	414.84	sq. ft.

Disclaimer : all pictures, plans, layouts, information, data and details included in this brochure are indicative only and may change at any time up to the final "as built" status in accordance with the final designs of the project, regulatory approvals and planning permissions.

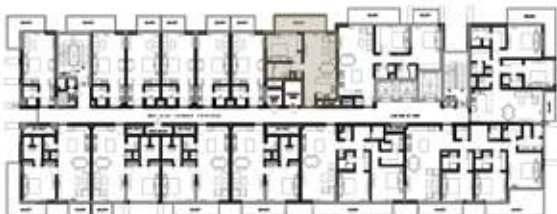


THE GROVE

by IMAN



**UNIT 214 - 1 BEDROOM**



2ND FLOOR PLAN

**1 BEDROOM**

UNIT No : 2nd Floor Plan	214
Suite Area	581.57 sq. ft.
Terrace/Balcony Area	117.22 sq. ft.
Total Sellable Area	698.79 sq. ft.

Disclaimer : all pictures, plans, layouts, information, data and details included in this brochure are indicative only and may change at any time up to the final "as built" status in accordance with the final designs of the project, regulatory approvals and planning permissions.



THE GROVE

by IMAN



**UNIT 215 - 2 BEDROOM**

**2 BEDROOM**

UNIT No : 2nd Floor	215	
Suite Area	892.87	sq. ft.
Terrace/Balcony Area	184.60	sq. ft.
Total Sellable Area	1077.47	sq. ft.



2ND FLOOR PLAN

Disclaimer : all pictures, plans, layouts, information, data and details included in this brochure are indicative only and may change at any time up to the final "as built" status in accordance with the final designs of the project, regulatory approvals and planning permissions.

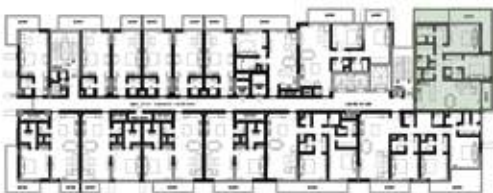


THE GROVE

by IMAN



**UNIT 301 - 2 BEDROOM**



3RD FLOOR PLAN

**2 BEDROOM**

UNIT No : 3rd Floor	301	
Suite Area	1057.98	sq. ft.
Terrace/Balcony Area	220.88	sq. ft.
Total Sellable Area	1278.86	sq. ft.

Disclaimer : all pictures, plans, layouts, information, data and details included in this brochure are indicative only and may change at any time up to the final "as built" status in accordance with the final designs of the project, regulatory approvals and planning permissions.



THE GROVE

by IMAN





**UNIT 302 - 3 BEDROOM**



3RD FLOOR PLAN

**3 BEDROOM**

UNIT No : 3rd Floor	302	
Suite Area	1442.90	sq. ft.
Terrace/Balcony Area	262.96	sq. ft.
Total Sellable Area	1705.86	sq. ft.

Disclaimer : all pictures, plans, layouts, information, data and details included in this brochure are indicative only and may change at any time up to the final "as built" status in accordance with the final designs of the project, regulatory approvals and planning permissions.



THE GROVE

by IMAN



**UNIT 303 - 2 BEDROOM**



3RD FLOOR PLAN

**2 BEDROOM**

UNIT No : 3rd Floor Plan	303
Suite Area	1121.60 sq. ft.
Terrace/Balcony Area	145.64 sq. ft.
Total Sellable Area	1267.24 sq. ft.

Disclaimer : all pictures, plans, layouts, information, data and details included in this brochure are indicative only and may change at any time up to the final "as built" status in accordance with the final designs of the project, regulatory approvals and planning permissions.



THE GROVE

by IMAN



**UNIT 304 - 1 BEDROOM**



3RD FLOOR PLAN

**1 BEDROOM**

UNIT No : 3rd Floor Plan	304
Suite Area	699.98 sq. ft.
Terrace/Balcony Area	81.91 sq. ft.
Total Sellable Area	781.89 sq. ft.

Disclaimer : all pictures, plans, layouts, information, data and details included in this brochure are indicative only and may change at any time up to the final "as built" status in accordance with the final designs of the project, regulatory approvals and planning permissions.

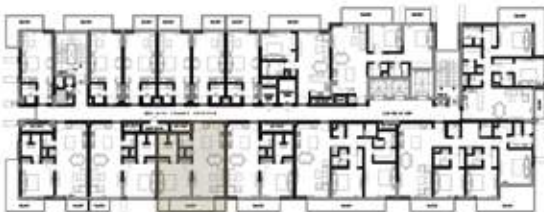


THE GROVE

by IMAN



**UNIT 305 - 1 BEDROOM**



3RD FLOOR PLAN

**1 BEDROOM**

UNIT No : 3rd Floor Plan	305
Suite Area	699.98 sq. ft.
Terrace/Balcony Area	86.65 sq. ft.
Total Sellable Area	786.63 sq. ft.

Disclaimer : all pictures, plans, layouts, information, data and details included in this brochure are indicative only and may change at any time up to the final "as built" status in accordance with the final designs of the project, regulatory approvals and planning permissions.

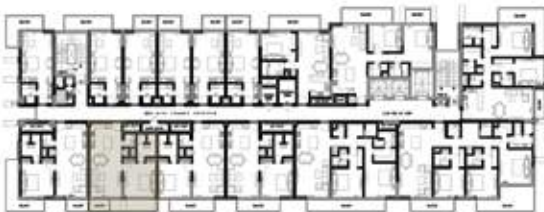


THE GROVE

by IMAN



**UNIT 306 - 1 BEDROOM**



3RD FLOOR PLAN

**1 BEDROOM**

UNIT No : 3rd Floor Plan	306
Suite Area	699.65 sq. ft.
Terrace/Balcony Area	39.83 sq. ft.
Total Sellable Area	739.48 sq. ft.

Disclaimer : all pictures, plans, layouts, information, data and details included in this brochure are indicative only and may change at any time up to the final "as built" status in accordance with the final designs of the project, regulatory approvals and planning permissions.

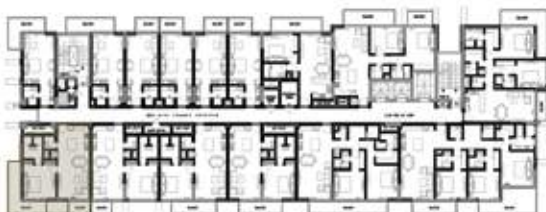


THE GROVE

by IMAN



**UNIT 307 - 1 BEDROOM**



3RD FLOOR PLAN

**1 BEDROOM**

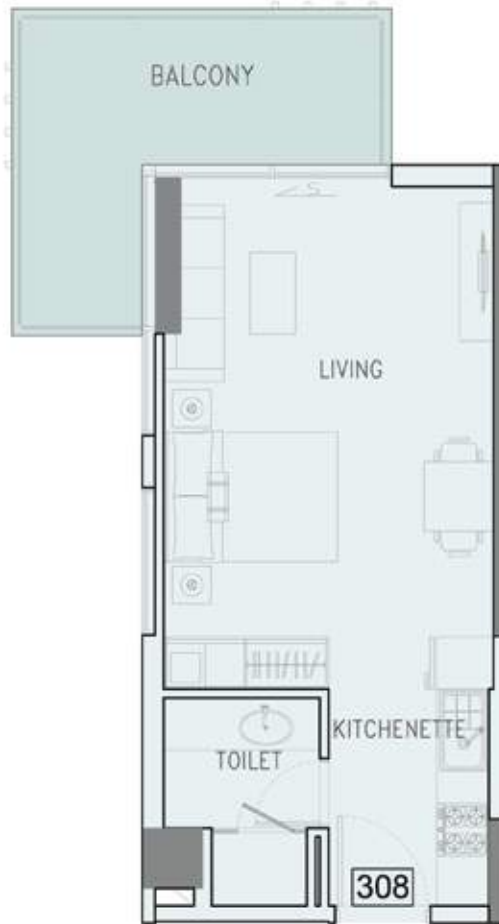
UNIT No : 3rd Floor Plan	307
Suite Area	697.61 sq. ft.
Terrace/Balcony Area	197.95 sq. ft.
Total Sellable Area	895.56 sq. ft.

Disclaimer : all pictures, plans, layouts, information, data and details included in this brochure are indicative only and may change at any time up to the final "as built" status in accordance with the final designs of the project, regulatory approvals and planning permissions.



THE GROVE

by IMAN



**UNIT 308 - STUDIO**



3RD FLOOR PLAN

**STUDIO**

UNIT No : 3rd Floor	308	
Suite Area	362.96	sq. ft.
Terrace/Balcony Area	114.20	sq. ft.
Total Sellable Area	477.16	sq. ft.

Disclaimer : all pictures, plans, layouts, information, data and details included in this brochure are indicative only and may change at any time up to the final "as built" status in accordance with the final designs of the project, regulatory approvals and planning permissions.



THE GROVE

by IMAN



**UNIT 309 - STUDIO**



3RD FLOOR PLAN

**STUDIO**

UNIT No : 3rd Floor	309	
Suite Area	363.28	sq. ft.
Terrace/Balcony Area	114.10	sq. ft.
Total Sellable Area	477.38	sq. ft.

Disclaimer : all pictures, plans, layouts, information, data and details included in this brochure are indicative only and may change at any time up to the final "as built" status in accordance with the final designs of the project, regulatory approvals and planning permissions.



THE GROVE

by IMAN





**UNIT 310 - STUDIO**



3RD FLOOR PLAN

**STUDIO**

UNIT No : 3rd Floor	310	
Suite Area	360.27	sq. ft.
Terrace/Balcony Area	53.93	sq. ft.
Total Sellable Area	414.20	sq. ft.

Disclaimer : all pictures, plans, layouts, information, data and details included in this brochure are indicative only and may change at any time up to the final "as built" status in accordance with the final designs of the project, regulatory approvals and planning permissions.



THE GROVE

by IMAN



**UNIT 311 - STUDIO**



3RD FLOOR PLAN

**STUDIO**

UNIT No : 3rd Floor	311	
Suite Area	358.54	sq. ft.
Terrace/Balcony Area	54.79	sq. ft.
Total Sellable Area	413.33	sq. ft.

Disclaimer : all pictures, plans, layouts, information, data and details included in this brochure are indicative only and may change at any time up to the final "as built" status in accordance with the final designs of the project, regulatory approvals and planning permissions.



THE GROVE

by IMAN



**UNIT 312 - STUDIO**



3RD FLOOR PLAN

**STUDIO**

UNIT No : 3rd Floor	312	
Suite Area	360.27	sq. ft.
Terrace/Balcony Area	53.93	sq. ft.
Total Sellable Area	414.20	sq. ft.

Disclaimer : all pictures, plans, layouts, information, data and details included in this brochure are indicative only and may change at any time up to the final "as built" status in accordance with the final designs of the project, regulatory approvals and planning permissions.



THE GROVE

by IMAN



**UNIT 313 - STUDIO**



3RD FLOOR PLAN

**STUDIO**

UNIT No : 3rd Floor	313	
Suite Area	360.05	sq. ft.
Terrace/Balcony Area	54.79	sq. ft.
Total Sellable Area	414.84	sq. ft.

Disclaimer : all pictures, plans, layouts, information, data and details included in this brochure are indicative only and may change at any time up to the final "as built" status in accordance with the final designs of the project, regulatory approvals and planning permissions.



THE GROVE

by IMAN



## UNIT 314 - 1 BEDROOM



3RD FLOOR PLAN

### 1 BEDROOM

UNIT No : 3rd Floor Plan	314
Suite Area	581.57 sq. ft.
Terrace/Balcony Area	117.22 sq. ft.
Total Sellable Area	698.79 sq. ft.

Disclaimer : all pictures, plans, layouts, information, data and details included in this brochure are indicative only and may change at any time up to the final "as built" status in accordance with the final designs of the project, regulatory approvals and planning permissions.

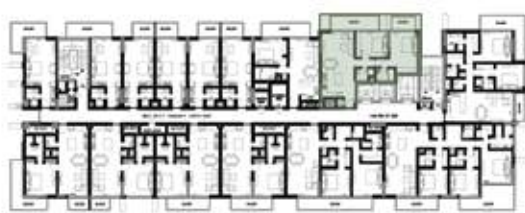


THE GROVE

by IMAN



**UNIT 315 - 2 BEDROOM**



3RD FLOOR PLAN

**2 BEDROOM**

UNIT No : 3rd Floor	315	
Suite Area	892.87	sq. ft.
Terrace/Balcony Area	184.60	sq. ft.
Total Sellable Area	1077.47	sq. ft.

Disclaimer : all pictures, plans, layouts, information, data and details included in this brochure are indicative only and may change at any time up to the final "as built" status in accordance with the final designs of the project, regulatory approvals and planning permissions.



THE GROVE

by IMAN



**UNIT 401 - 2 BEDROOM**



4TH FLOOR PLAN

**2 BEDROOM**

UNIT No : 4th Floor	401	
Suite Area	1057.98	sq. ft.
Terrace/Balcony Area	220.88	sq. ft.
Total Sellable Area	1278.86	sq. ft.

Disclaimer : all pictures, plans, layouts, information, data and details included in this brochure are indicative only and may change at any time up to the final "as built" status in accordance with the final designs of the project, regulatory approvals and planning permissions.



THE GROVE

by IMAN



**UNIT 402 - 3 BEDROOM**



4TH FLOOR PLAN

**3 BEDROOM**

UNIT No : 4th Floor	402	
Suite Area	1442.90	sq. ft.
Terrace/Balcony Area	262.96	sq. ft.
Total Sellable Area	1705.86	sq. ft.

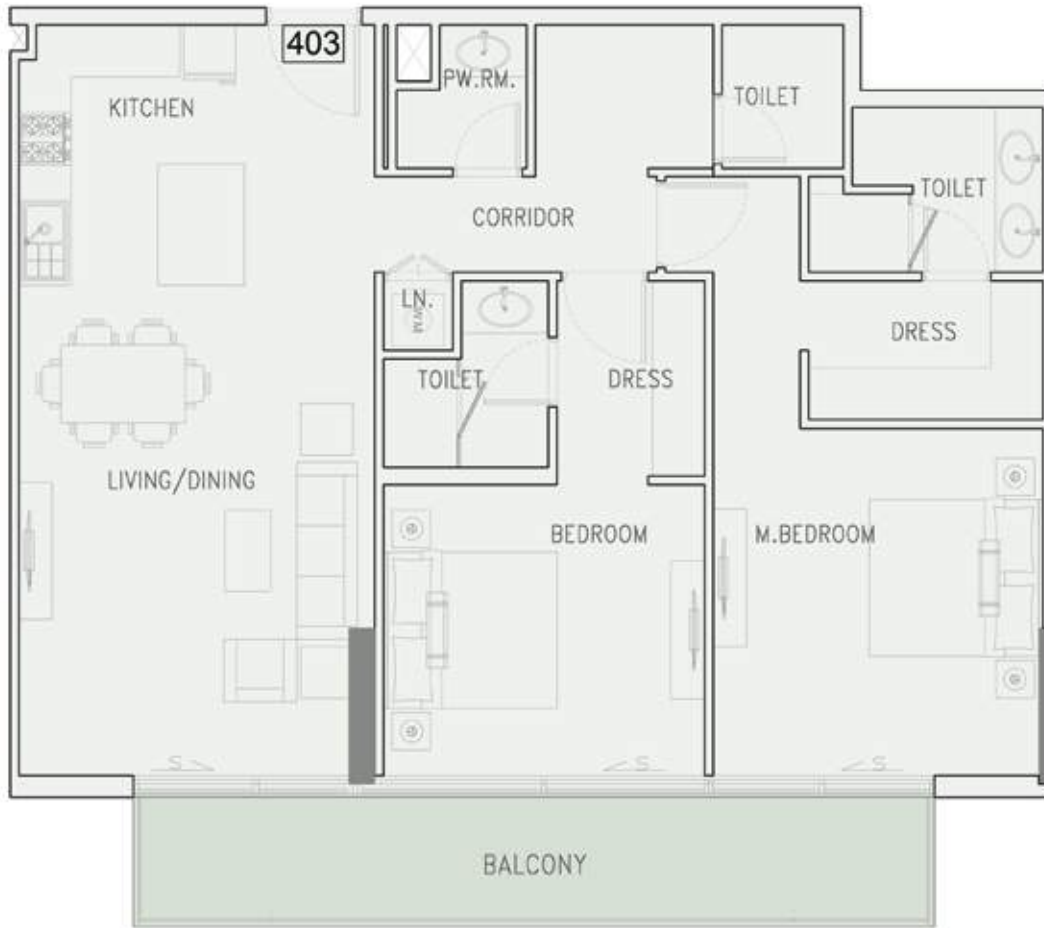
Disclaimer : all pictures, plans, layouts, information, data and details included in this brochure are indicative only and may change at any time up to the final "as built" status in accordance with the final designs of the project, regulatory approvals and planning permissions.



THE GROVE

by IMAN





**UNIT 403 - 2 BEDROOM**



4TH FLOOR PLAN

**2 BEDROOM**

UNIT No : 4th Floor Plan	403
Suite Area	1121.60 sq. ft.
Terrace/Balcony Area	145.64 sq. ft.
Total Sellable Area	1267.24 sq. ft.

Disclaimer : all pictures, plans, layouts, information, data and details included in this brochure are indicative only and may change at any time up to the final "as built" status in accordance with the final designs of the project, regulatory approvals and planning permissions.



THE GROVE

by IMAN



**UNIT 404 - 1 BEDROOM**



4TH FLOOR PLAN

**1 BEDROOM**

UNIT No : 4th Floor Plan	404
Suite Area	699.98 sq. ft.
Terrace/Balcony Area	81.91 sq. ft.
Total Sellable Area	781.89 sq. ft.

Disclaimer : all pictures, plans, layouts, information, data and details included in this brochure are indicative only and may change at any time up to the final "as built" status in accordance with the final designs of the project, regulatory approvals and planning permissions.

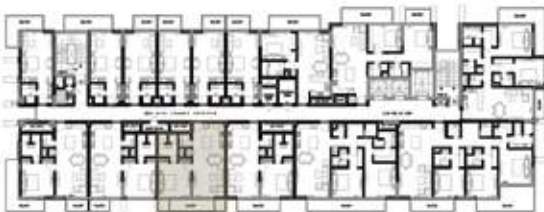


THE GROVE

by IMAN



**UNIT 405 - 1 BEDROOM**



4TH FLOOR PLAN

**1 BEDROOM**

UNIT No : 4th Floor Plan	405
Suite Area	699.98 sq. ft.
Terrace/Balcony Area	86.65 sq. ft.
Total Sellable Area	786.63 sq. ft.

Disclaimer : all pictures, plans, layouts, information, data and details included in this brochure are indicative only and may change at any time up to the final "as built" status in accordance with the final designs of the project, regulatory approvals and planning permissions.

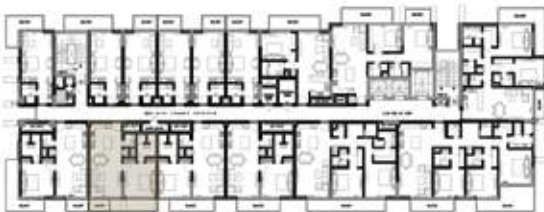


THE GROVE

by IMAN



**UNIT 406 - 1 BEDROOM**



4TH FLOOR PLAN

**1 BEDROOM**

UNIT No : 4th Floor Plan	406
Suite Area	699.65 sq. ft.
Terrace/Balcony Area	39.83 sq. ft.
Total Sellable Area	739.48 sq. ft.

Disclaimer : all pictures, plans, layouts, information, data and details included in this brochure are indicative only and may change at any time up to the final "as built" status in accordance with the final designs of the project, regulatory approvals and planning permissions.

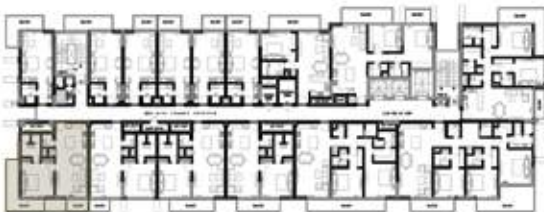


THE GROVE

by IMAN



**UNIT 407 - 1 BEDROOM**



4TH FLOOR PLAN

**1 BEDROOM**

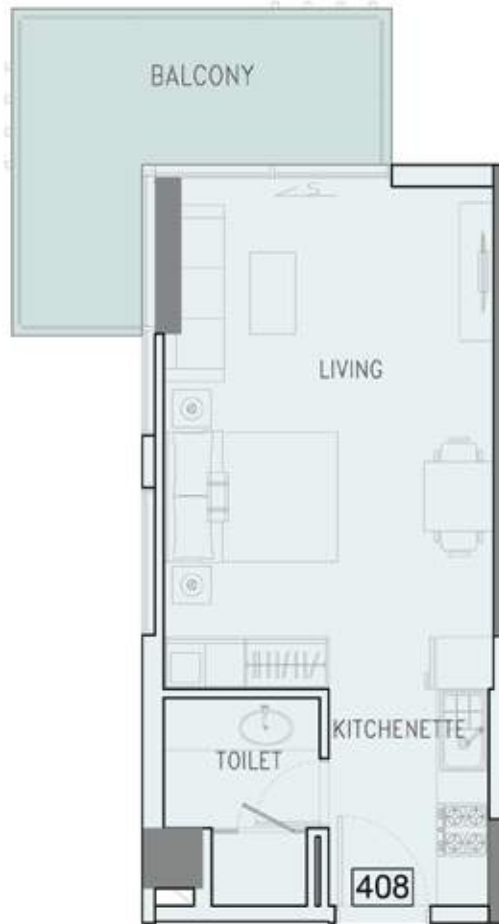
UNIT No : 4th Floor Plan	407
Suite Area	697.61 sq. ft.
Terrace/Balcony Area	197.95 sq. ft.
Total Sellable Area	895.56 sq. ft.

Disclaimer : all pictures, plans, layouts, information, data and details included in this brochure are indicative only and may change at any time up to the final "as built" status in accordance with the final designs of the project, regulatory approvals and planning permissions.



THE GROVE

by IMAN



**UNIT 408 - STUDIO**



4TH FLOOR PLAN

**STUDIO**

UNIT No : 4th Floor	408	
Suite Area	362.96	sq. ft.
Terrace/Balcony Area	114.20	sq. ft.
Total Sellable Area	477.16	sq. ft.

Disclaimer : all pictures, plans, layouts, information, data and details included in this brochure are indicative only and may change at any time up to the final "as built" status in accordance with the final designs of the project, regulatory approvals and planning permissions.



THE GROVE

by IMAN



**UNIT 409 - STUDIO**



4TH FLOOR PLAN

**STUDIO**

UNIT No : 4th Floor	409	
Suite Area	363.28	sq. ft.
Terrace/Balcony Area	114.10	sq. ft.
Total Sellable Area	477.38	sq. ft.

Disclaimer : all pictures, plans, layouts, information, data and details included in this brochure are indicative only and may change at any time up to the final "as built" status in accordance with the final designs of the project, regulatory approvals and planning permissions.



THE GROVE

by IMAN



**UNIT 410 - STUDIO**



4TH FLOOR PLAN

**STUDIO**

UNIT No : 4th Floor	410	
Suite Area	360.27	sq. ft.
Terrace/Balcony Area	53.93	sq. ft.
Total Sellable Area	414.20	sq. ft.

Disclaimer : all pictures, plans, layouts, information, data and details included in this brochure are indicative only and may change at any time up to the final "as built" status in accordance with the final designs of the project, regulatory approvals and planning permissions.



THE GROVE

by IMAN





**UNIT 411 - STUDIO**



4TH FLOOR PLAN

**STUDIO**

UNIT No : 4th Floor	411	
Suite Area	358.54	sq. ft.
Terrace/Balcony Area	54.79	sq. ft.
Total Sellable Area	413.33	sq. ft.

Disclaimer : all pictures, plans, layouts, information, data and details included in this brochure are indicative only and may change at any time up to the final "as built" status in accordance with the final designs of the project, regulatory approvals and planning permissions.



THE GROVE

by IMAN



**UNIT 412 - STUDIO**



4TH FLOOR PLAN

**STUDIO**

UNIT No : 4th Floor	412	
Suite Area	360.27	sq. ft.
Terrace/Balcony Area	53.93	sq. ft.
Total Sellable Area	414.20	sq. ft.

Disclaimer : all pictures, plans, layouts, information, data and details included in this brochure are indicative only and may change at any time up to the final "as built" status in accordance with the final designs of the project, regulatory approvals and planning permissions.



THE GROVE

by IMAN



**UNIT 413 - STUDIO**



4TH FLOOR PLAN

**STUDIO**

UNIT No : 4th Floor	413	
Suite Area	360.05	sq. ft.
Terrace/Balcony Area	54.79	sq. ft.
Total Sellable Area	414.84	sq. ft.

Disclaimer : all pictures, plans, layouts, information, data and details included in this brochure are indicative only and may change at any time up to the final "as built" status in accordance with the final designs of the project, regulatory approvals and planning permissions.



THE GROVE

by IMAN



**UNIT 414 - 1 BEDROOM**



4TH FLOOR PLAN

**1 BEDROOM**

UNIT No : 4th Floor Plan	414
Suite Area	581.57 sq. ft.
Terrace/Balcony Area	117.22 sq. ft.
Total Sellable Area	698.79 sq. ft.

Disclaimer : all pictures, plans, layouts, information, data and details included in this brochure are indicative only and may change at any time up to the final "as built" status in accordance with the final designs of the project, regulatory approvals and planning permissions.

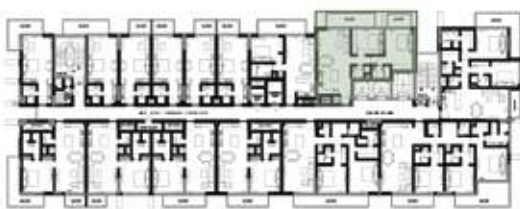


THE GROVE

by IMAN



**UNIT 415 - 2 BEDROOM**



4TH FLOOR PLAN

**2 BEDROOM**

UNIT No : 4th Floor	415	
Suite Area	892.87	sq. ft.
Terrace/Balcony Area	184.60	sq. ft.
Total Sellable Area	1077.47	sq. ft.

Disclaimer : all pictures, plans, layouts, information, data and details included in this brochure are indicative only and may change at any time up to the final "as built" status in accordance with the final designs of the project, regulatory approvals and planning permissions.

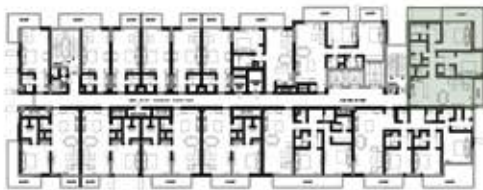


THE GROVE

by IMAN



**UNIT 501 - 2 BEDROOM**



5TH FLOOR PLAN

**2 BEDROOM**

UNIT No : 5th Floor	501	
Suite Area	1057.98	sq. ft.
Terrace/Balcony Area	220.88	sq. ft.
Total Sellable Area	1278.86	sq. ft.

Disclaimer : all pictures, plans, layouts, information, data and details included in this brochure are indicative only and may change at any time up to the final "as built" status in accordance with the final designs of the project, regulatory approvals and planning permissions.



THE GROVE

by IMAN



**UNIT 502 - 3 BEDROOM**



5TH FLOOR PLAN

**3 BEDROOM**

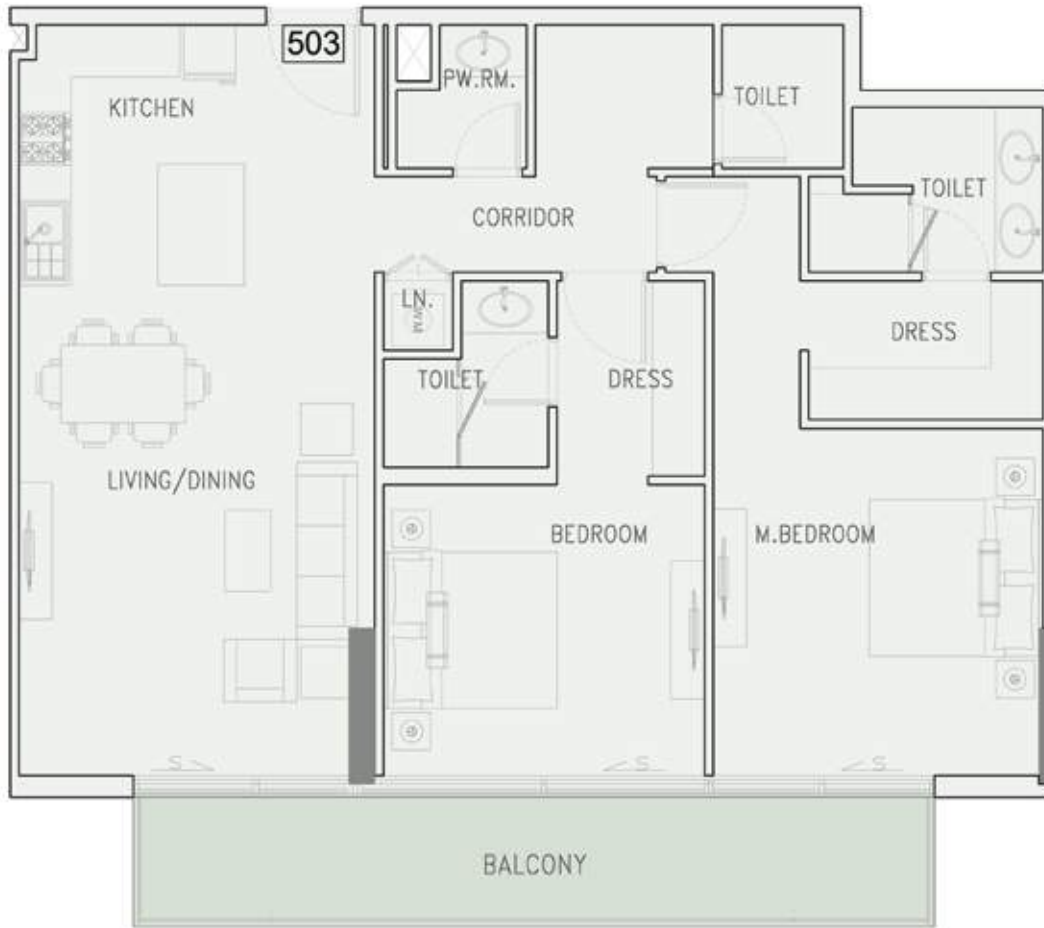
UNIT No : 5th Floor	502	
Suite Area	1442.90	sq. ft.
Terrace/Balcony Area	262.96	sq. ft.
Total Sellable Area	1705.86	sq. ft.

Disclaimer : all pictures, plans, layouts, information, data and details included in this brochure are indicative only and may change at any time up to the final "as built" status in accordance with the final designs of the project, regulatory approvals and planning permissions.



THE GROVE

by IMAN



**UNIT 503 - 2 BEDROOM**



5TH FLOOR PLAN

**2 BEDROOM**

UNIT No : 5th Floor Plan	503
Suite Area	1121.60 sq. ft.
Terrace/Balcony Area	145.64 sq. ft.
Total Sellable Area	1267.24 sq. ft.

Disclaimer : all pictures, plans, layouts, information, data and details included in this brochure are indicative only and may change at any time up to the final "as built" status in accordance with the final designs of the project, regulatory approvals and planning permissions.



THE GROVE

by IMAN





**UNIT 504 - 1 BEDROOM**



5TH FLOOR PLAN

**1 BEDROOM**

UNIT No : 5th Floor Plan	504
Suite Area	699.98 sq. ft.
Terrace/Balcony Area	81.91 sq. ft.
Total Sellable Area	781.89 sq. ft.

Disclaimer : all pictures, plans, layouts, information, data and details included in this brochure are indicative only and may change at any time up to the final "as built" status in accordance with the final designs of the project, regulatory approvals and planning permissions.

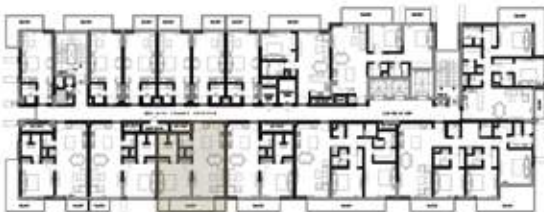


THE GROVE

by IMAN



**UNIT 505 - 1 BEDROOM**



5TH FLOOR PLAN

**1 BEDROOM**

UNIT No : 5th Floor Plan	505
Suite Area	699.98 sq. ft.
Terrace/Balcony Area	86.65 sq. ft.
Total Sellable Area	786.63 sq. ft.

Disclaimer : all pictures, plans, layouts, information, data and details included in this brochure are indicative only and may change at any time up to the final "as built" status in accordance with the final designs of the project, regulatory approvals and planning permissions.

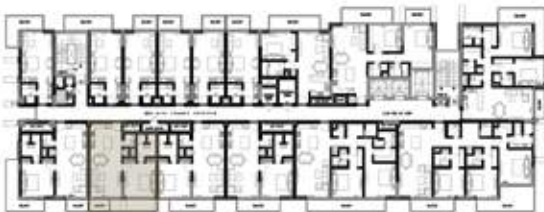


THE GROVE

by IMAN



**UNIT 506 - 1 BEDROOM**



5TH FLOOR PLAN

**1 BEDROOM**

UNIT No : 5th Floor Plan	506
Suite Area	699.65 sq. ft.
Terrace/Balcony Area	39.83 sq. ft.
Total Sellable Area	739.48 sq. ft.

Disclaimer : all pictures, plans, layouts, information, data and details included in this brochure are indicative only and may change at any time up to the final "as built" status in accordance with the final designs of the project, regulatory approvals and planning permissions.



THE GROVE

by IMAN



**UNIT 507 - 1 BEDROOM**



5TH FLOOR PLAN

**1 BEDROOM**

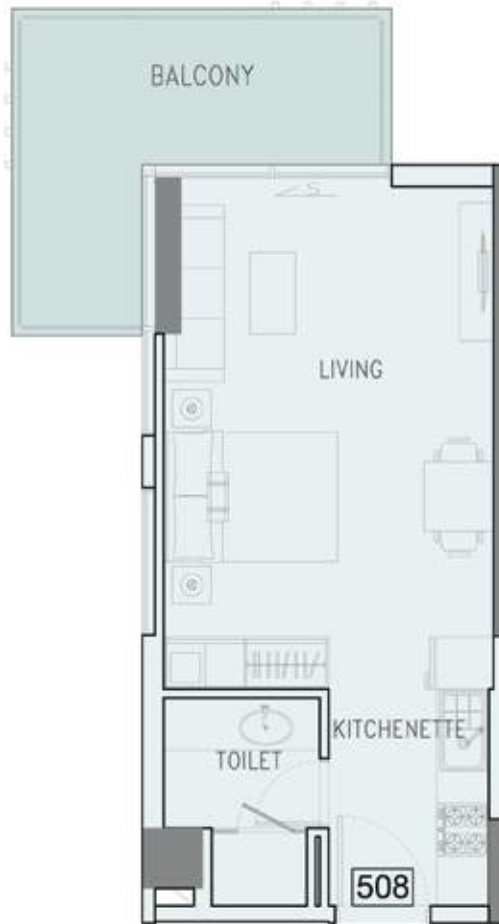
UNIT No : 5th Floor Plan	507
Suite Area	697.61 sq. ft.
Terrace/Balcony Area	197.95 sq. ft.
Total Sellable Area	895.56 sq. ft.

Disclaimer : all pictures, plans, layouts, information, data and details included in this brochure are indicative only and may change at any time up to the final "as built" status in accordance with the final designs of the project, regulatory approvals and planning permissions.



THE GROVE

by IMAN



**UNIT 508 - STUDIO**



5TH FLOOR PLAN

**STUDIO**

UNIT No : 5th Floor	508	
Suite Area	362.96	sq. ft.
Terrace/Balcony Area	114.20	sq. ft.
Total Sellable Area	477.16	sq. ft.

Disclaimer : all pictures, plans, layouts, information, data and details included in this brochure are indicative only and may change at any time up to the final "as built" status in accordance with the final designs of the project, regulatory approvals and planning permissions.



THE GROVE

by IMAN



**UNIT 509 - STUDIO**



5TH FLOOR PLAN

**STUDIO**

UNIT No : 5th Floor	509	
Suite Area	363.28	sq. ft.
Terrace/Balcony Area	114.10	sq. ft.
Total Sellable Area	477.38	sq. ft.

Disclaimer : all pictures, plans, layouts, information, data and details included in this brochure are indicative only and may change at any time up to the final "as built" status in accordance with the final designs of the project, regulatory approvals and planning permissions.



THE GROVE

by IMAN



**UNIT 510 - STUDIO**



5TH FLOOR PLAN

**STUDIO**

UNIT No : 5th Floor	510	
Suite Area	360.27	sq. ft.
Terrace/Balcony Area	53.93	sq. ft.
Total Sellable Area	414.20	sq. ft.

Disclaimer : all pictures, plans, layouts, information, data and details included in this brochure are indicative only and may change at any time up to the final "as built" status in accordance with the final designs of the project, regulatory approvals and planning permissions.



THE GROVE

by IMAN



**UNIT 511 - STUDIO**



5TH FLOOR PLAN

**STUDIO**

UNIT No : 5th Floor	511	
Suite Area	358.54	sq. ft.
Terrace/Balcony Area	54.79	sq. ft.
Total Sellable Area	413.33	sq. ft.

Disclaimer : all pictures, plans, layouts, information, data and details included in this brochure are indicative only and may change at any time up to the final "as built" status in accordance with the final designs of the project, regulatory approvals and planning permissions.



THE GROVE

by IMAN





**UNIT 512 - STUDIO**



5TH FLOOR PLAN

**STUDIO**

UNIT No : 5th Floor	512	
Suite Area	360.27	sq. ft.
Terrace/Balcony Area	53.93	sq. ft.
Total Sellable Area	414.20	sq. ft.

Disclaimer : all pictures, plans, layouts, information, data and details included in this brochure are indicative only and may change at any time up to the final "as built" status in accordance with the final designs of the project, regulatory approvals and planning permissions.



THE GROVE

by IMAN



**UNIT 513 - STUDIO**



5TH FLOOR PLAN

**STUDIO**

UNIT No : 5th Floor	513	
Suite Area	360.05	sq. ft.
Terrace/Balcony Area	54.79	sq. ft.
Total Sellable Area	414.84	sq. ft.

Disclaimer : all pictures, plans, layouts, information, data and details included in this brochure are indicative only and may change at any time up to the final "as built" status in accordance with the final designs of the project, regulatory approvals and planning permissions.



THE GROVE

by IMAN



**UNIT 514 - 1 BEDROOM**



5TH FLOOR PLAN

**1 BEDROOM**

UNIT No : 5th Floor Plan	514
Suite Area	581.57 sq. ft.
Terrace/Balcony Area	117.22 sq. ft.
Total Sellable Area	698.79 sq. ft.

Disclaimer : all pictures, plans, layouts, information, data and details included in this brochure are indicative only and may change at any time up to the final "as built" status in accordance with the final designs of the project, regulatory approvals and planning permissions.



THE GROVE

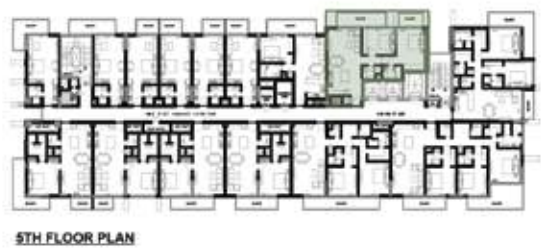
by IMAN



**UNIT 515 - 2 BEDROOM**

**2 BEDROOM**

UNIT No : 5th Floor	515	
Suite Area	892.87	sq. ft.
Terrace/Balcony Area	184.60	sq. ft.
Total Sellable Area	1077.47	sq. ft.



5TH FLOOR PLAN

Disclaimer : all pictures, plans, layouts, information, data and details included in this brochure are indicative only and may change at any time up to the final "as built" status in accordance with the final designs of the project, regulatory approvals and planning permissions.

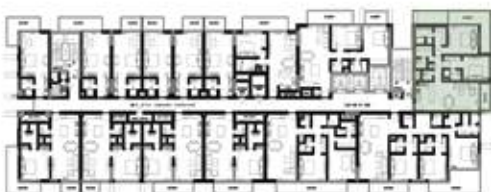


THE GROVE

by IMAN



**UNIT 601 - 2 BEDROOM**



6TH FLOOR PLAN

**2 BEDROOM**

UNIT No : 6th Floor	601	
Suite Area	1057.98	sq. ft.
Terrace/Balcony Area	220.88	sq. ft.
Total Sellable Area	1278.86	sq. ft.

Disclaimer : all pictures, plans, layouts, information, data and details included in this brochure are indicative only and may change at any time up to the final "as built" status in accordance with the final designs of the project, regulatory approvals and planning permissions.



THE GROVE

by IMAN



**UNIT 602 - 3 BEDROOM**



6TH FLOOR PLAN

**3 BEDROOM**

UNIT No : 6th Floor	602	
Suite Area	1442.90	sq. ft.
Terrace/Balcony Area	262.96	sq. ft.
Total Sellable Area	1705.86	sq. ft.

Disclaimer : all pictures, plans, layouts, information, data and details included in this brochure are indicative only and may change at any time up to the final "as built" status in accordance with the final designs of the project, regulatory approvals and planning permissions.



THE GROVE

by IMAN



**UNIT 603 - 2 BEDROOM**



6TH FLOOR PLAN

**2 BEDROOM**

UNIT No : 6th Floor Plan	603
Suite Area	1121.60 sq. ft.
Terrace/Balcony Area	145.64 sq. ft.
Total Sellable Area	1267.24 sq. ft.

Disclaimer : all pictures, plans, layouts, information, data and details included in this brochure are indicative only and may change at any time up to the final "as built" status in accordance with the final designs of the project, regulatory approvals and planning permissions.



THE GROVE

by IMAN



**UNIT 604 - 1 BEDROOM**



6TH FLOOR PLAN

**1 BEDROOM**

UNIT No : 6th Floor Plan	604
Suite Area	699.98 sq. ft.
Terrace/Balcony Area	81.91 sq. ft.
Total Sellable Area	781.89 sq. ft.

Disclaimer : all pictures, plans, layouts, information, data and details included in this brochure are indicative only and may change at any time up to the final "as built" status in accordance with the final designs of the project, regulatory approvals and planning permissions.



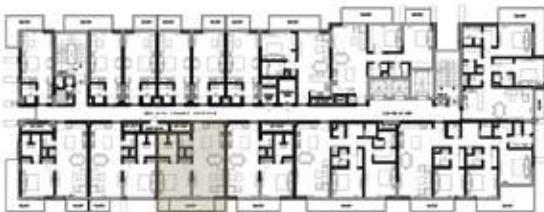
THE GROVE

by IMAN





**UNIT 605 - 1 BEDROOM**



6TH FLOOR PLAN

**1 BEDROOM**

UNIT No : 6th Floor Plan	605
Suite Area	699.98 sq. ft.
Terrace/Balcony Area	86.65 sq. ft.
Total Sellable Area	786.63 sq. ft.

Disclaimer : all pictures, plans, layouts, information, data and details included in this brochure are indicative only and may change at any time up to the final "as built" status in accordance with the final designs of the project, regulatory approvals and planning permissions.

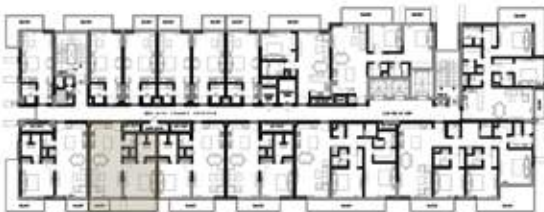


THE GROVE

by IMAN



**UNIT 606 - 1 BEDROOM**



6TH FLOOR PLAN

**1 BEDROOM**

UNIT No : 6th Floor Plan	606
Suite Area	699.65 sq. ft.
Terrace/Balcony Area	39.83 sq. ft.
Total Sellable Area	739.48 sq. ft.

Disclaimer : all pictures, plans, layouts, information, data and details included in this brochure are indicative only and may change at any time up to the final "as built" status in accordance with the final designs of the project, regulatory approvals and planning permissions.

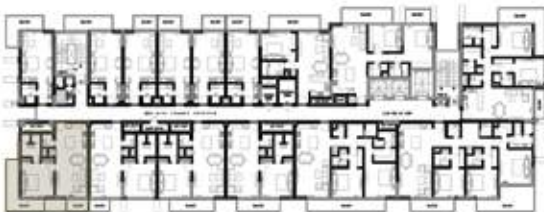


THE GROVE

by IMAN



**UNIT 607 - 1 BEDROOM**



6TH FLOOR PLAN

**1 BEDROOM**

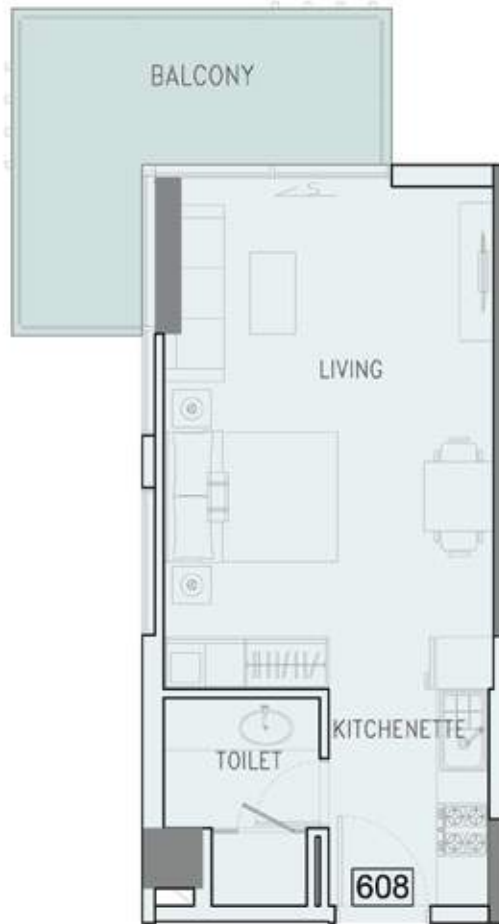
UNIT No : 6th Floor Plan	607
Suite Area	697.61 sq. ft.
Terrace/Balcony Area	197.95 sq. ft.
Total Sellable Area	895.56 sq. ft.

Disclaimer : all pictures, plans, layouts, information, data and details included in this brochure are indicative only and may change at any time up to the final "as built" status in accordance with the final designs of the project, regulatory approvals and planning permissions.



THE GROVE

by IMAN



**UNIT 608 - STUDIO**



8TH FLOOR PLAN

**STUDIO**

UNIT No : 6th Floor	608	
Suite Area	362.96	sq. ft.
Terrace/Balcony Area	114.20	sq. ft.
Total Sellable Area	477.16	sq. ft.

Disclaimer : all pictures, plans, layouts, information, data and details included in this brochure are indicative only and may change at any time up to the final "as built" status in accordance with the final designs of the project, regulatory approvals and planning permissions.



THE GROVE

by IMAN



**UNIT 609 - STUDIO**



6TH FLOOR PLAN

**STUDIO**

UNIT No : 6th Floor	609	
Suite Area	363.28	sq. ft.
Terrace/Balcony Area	114.10	sq. ft.
Total Sellable Area	477.38	sq. ft.

Disclaimer : all pictures, plans, layouts, information, data and details included in this brochure are indicative only and may change at any time up to the final "as built" status in accordance with the final designs of the project, regulatory approvals and planning permissions.



THE GROVE

by IMAN



**UNIT 610 - STUDIO**



6TH FLOOR PLAN

**STUDIO**

UNIT No : 6th Floor	610	
Suite Area	360.27	sq. ft.
Terrace/Balcony Area	53.93	sq. ft.
Total Sellable Area	414.20	sq. ft.

Disclaimer : all pictures, plans, layouts, information, data and details included in this brochure are indicative only and may change at any time up to the final "as built" status in accordance with the final designs of the project, regulatory approvals and planning permissions.



THE GROVE

by IMAN



**UNIT 611 - STUDIO**



6TH FLOOR PLAN

**STUDIO**

UNIT No : 6th Floor	611	
Suite Area	358.54	sq. ft.
Terrace/Balcony Area	54.79	sq. ft.
Total Sellable Area	413.33	sq. ft.

Disclaimer : all pictures, plans, layouts, information, data and details included in this brochure are indicative only and may change at any time up to the final "as built" status in accordance with the final designs of the project, regulatory approvals and planning permissions.



THE GROVE

by IMAN



**UNIT 612 - STUDIO**



6TH FLOOR PLAN

**STUDIO**

UNIT No : 6th Floor	612	
Suite Area	360.27	sq. ft.
Terrace/Balcony Area	53.93	sq. ft.
Total Sellable Area	414.20	sq. ft.

Disclaimer : all pictures, plans, layouts, information, data and details included in this brochure are indicative only and may change at any time up to the final "as built" status in accordance with the final designs of the project, regulatory approvals and planning permissions.



THE GROVE

by IMAN





**UNIT 613 - STUDIO**



6TH FLOOR PLAN

**STUDIO**

UNIT No : 6th Floor	613	
Suite Area	360.05	sq. ft.
Terrace/Balcony Area	54.79	sq. ft.
Total Sellable Area	414.84	sq. ft.

Disclaimer : all pictures, plans, layouts, information, data and details included in this brochure are indicative only and may change at any time up to the final "as built" status in accordance with the final designs of the project, regulatory approvals and planning permissions.



THE GROVE

by IMAN



## UNIT 614 - 1 BEDROOM



6TH FLOOR PLAN

### 1 BEDROOM

UNIT No : 6th Floor Plan	614
Suite Area	581.57 sq. ft.
Terrace/Balcony Area	117.22 sq. ft.
Total Sellable Area	698.79 sq. ft.

Disclaimer : all pictures, plans, layouts, information, data and details included in this brochure are indicative only and may change at any time up to the final "as built" status in accordance with the final designs of the project, regulatory approvals and planning permissions.



THE GROVE

by IMAN



**UNIT 615 - 2 BEDROOM**

**2 BEDROOM**

UNIT No : 6th Floor	615	
Suite Area	892.87	sq. ft.
Terrace/Balcony Area	184.60	sq. ft.
Total Sellable Area	1077.47	sq. ft.



8TH FLOOR PLAN

Disclaimer : all pictures, plans, layouts, information, data and details included in this brochure are indicative only and may change at any time up to the final "as built" status in accordance with the final designs of the project, regulatory approvals and planning permissions.

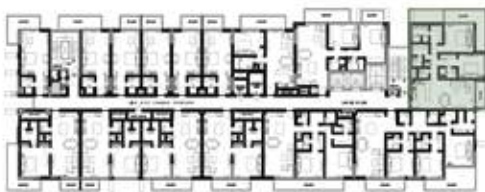


THE GROVE

by IMAN



**UNIT 701 - 2 BEDROOM**



7TH FLOOR PLAN

**2 BEDROOM**

UNIT No : 7th Floor	701	
Suite Area	1057.98	sq. ft.
Terrace/Balcony Area	220.88	sq. ft.
Total Sellable Area	1278.86	sq. ft.

Disclaimer : all pictures, plans, layouts, information, data and details included in this brochure are indicative only and may change at any time up to the final "as built" status in accordance with the final designs of the project, regulatory approvals and planning permissions.



THE GROVE

by IMAN



**UNIT 702 - 3 BEDROOM**



7TH FLOOR PLAN

**3 BEDROOM**

UNIT No : 7th Floor	702	
Suite Area	1442.90	sq. ft.
Terrace/Balcony Area	262.96	sq. ft.
Total Sellable Area	1705.86	sq. ft.

Disclaimer : all pictures, plans, layouts, information, data and details included in this brochure are indicative only and may change at any time up to the final "as built" status in accordance with the final designs of the project, regulatory approvals and planning permissions.



THE GROVE

by IMAN



**UNIT 703 - 2 BEDROOM**



7TH FLOOR PLAN

**2 BEDROOM**

UNIT No : 7th Floor Plan	703
Suite Area	1121.60 sq. ft.
Terrace/Balcony Area	145.64 sq. ft.
Total Sellable Area	1267.24 sq. ft.

Disclaimer : all pictures, plans, layouts, information, data and details included in this brochure are indicative only and may change at any time up to the final "as built" status in accordance with the final designs of the project, regulatory approvals and planning permissions.



THE GROVE

by IMAN



**UNIT 704 - 1 BEDROOM**



7TH FLOOR PLAN

**1 BEDROOM**

UNIT No : 7th Floor Plan	704
Suite Area	699.98 sq. ft.
Terrace/Balcony Area	81.91 sq. ft.
Total Sellable Area	781.89 sq. ft.

Disclaimer : all pictures, plans, layouts, information, data and details included in this brochure are indicative only and may change at any time up to the final "as built" status in accordance with the final designs of the project, regulatory approvals and planning permissions.

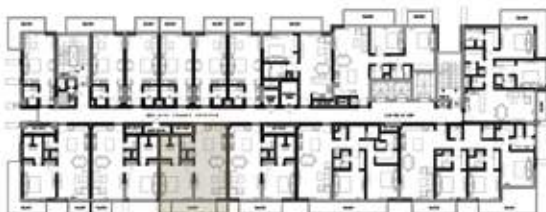


THE GROVE

by IMAN



**UNIT 705 - 1 BEDROOM**



7TH FLOOR PLAN

**1 BEDROOM**

UNIT No : 7th Floor Plan		705
Suite Area	699.98	sq. ft.
Terrace/Balcony Area	86.65	sq. ft.
Total Sellable Area	786.63	sq. ft.

Disclaimer : all pictures, plans, layouts, information, data and details included in this brochure are indicative only and may change at any time up to the final "as built" status in accordance with the final designs of the project, regulatory approvals and planning permissions.



THE GROVE

by IMAN





**UNIT 706 - 1 BEDROOM**



7TH FLOOR PLAN

**1 BEDROOM**

UNIT No : 7th Floor Plan	706
Suite Area	699.65 sq. ft.
Terrace/Balcony Area	39.83 sq. ft.
Total Sellable Area	739.48 sq. ft.

Disclaimer : all pictures, plans, layouts, information, data and details included in this brochure are indicative only and may change at any time up to the final "as built" status in accordance with the final designs of the project, regulatory approvals and planning permissions.

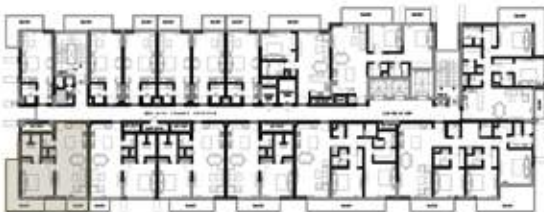


THE GROVE

by IMAN



**UNIT 707 - 1 BEDROOM**



7TH FLOOR PLAN

**1 BEDROOM**

UNIT No : 7th Floor Plan	707
Suite Area	697.61 sq. ft.
Terrace/Balcony Area	197.95 sq. ft.
Total Sellable Area	895.56 sq. ft.

Disclaimer : all pictures, plans, layouts, information, data and details included in this brochure are indicative only and may change at any time up to the final "as built" status in accordance with the final designs of the project, regulatory approvals and planning permissions.



THE GROVE

by IMAN



**UNIT 708 - STUDIO**



7TH FLOOR PLAN

**STUDIO**

UNIT No : 7th Floor	708	
Suite Area	362.96	sq. ft.
Terrace/Balcony Area	114.20	sq. ft.
Total Sellable Area	477.16	sq. ft.

Disclaimer : all pictures, plans, layouts, information, data and details included in this brochure are indicative only and may change at any time up to the final "as built" status in accordance with the final designs of the project, regulatory approvals and planning permissions.



THE GROVE

by IMAN



**UNIT 709 - STUDIO**



7TH FLOOR PLAN

**STUDIO**

UNIT No : 7th Floor	709	
Suite Area	363.28	sq. ft.
Terrace/Balcony Area	114.10	sq. ft.
Total Sellable Area	477.38	sq. ft.

Disclaimer : all pictures, plans, layouts, information, data and details included in this brochure are indicative only and may change at any time up to the final "as built" status in accordance with the final designs of the project, regulatory approvals and planning permissions.



THE GROVE

by IMAN



**UNIT 710 - STUDIO**



7TH FLOOR PLAN

**STUDIO**

UNIT No : 7th Floor	710	
Suite Area	360.27	sq. ft.
Terrace/Balcony Area	53.93	sq. ft.
Total Sellable Area	414.20	sq. ft.

Disclaimer : all pictures, plans, layouts, information, data and details included in this brochure are indicative only and may change at any time up to the final "as built" status in accordance with the final designs of the project, regulatory approvals and planning permissions.



THE GROVE

by IMAN



**UNIT 711 - STUDIO**



7TH FLOOR PLAN

**STUDIO**

UNIT No : 7th Floor	711	
Suite Area	358.54	sq. ft.
Terrace/Balcony Area	54.79	sq. ft.
Total Sellable Area	413.33	sq. ft.

Disclaimer : all pictures, plans, layouts, information, data and details included in this brochure are indicative only and may change at any time up to the final "as built" status in accordance with the final designs of the project, regulatory approvals and planning permissions.



THE GROVE

by IMAN



**UNIT 712 - STUDIO**



7TH FLOOR PLAN

**STUDIO**

UNIT No : 7th Floor	712	
Suite Area	360.27	sq. ft.
Terrace/Balcony Area	53.93	sq. ft.
Total Sellable Area	414.20	sq. ft.

Disclaimer : all pictures, plans, layouts, information, data and details included in this brochure are indicative only and may change at any time up to the final "as built" status in accordance with the final designs of the project, regulatory approvals and planning permissions.



THE GROVE

by IMAN



**UNIT 713 - STUDIO**



7TH FLOOR PLAN

**STUDIO**

UNIT No : 7th Floor	713	
Suite Area	360.05	sq. ft.
Terrace/Balcony Area	54.79	sq. ft.
Total Sellable Area	414.84	sq. ft.

Disclaimer : all pictures, plans, layouts, information, data and details included in this brochure are indicative only and may change at any time up to the final "as built" status in accordance with the final designs of the project, regulatory approvals and planning permissions.



THE GROVE

by IMAN





## UNIT 714 - 1 BEDROOM



7TH FLOOR PLAN

### 1 BEDROOM

UNIT No : 7th Floor Plan	714
Suite Area	581.57 sq. ft.
Terrace/Balcony Area	117.22 sq. ft.
Total Sellable Area	698.79 sq. ft.

Disclaimer : all pictures, plans, layouts, information, data and details included in this brochure are indicative only and may change at any time up to the final "as built" status in accordance with the final designs of the project, regulatory approvals and planning permissions.

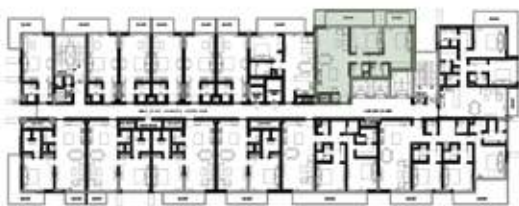


THE GROVE

by IMAN



**UNIT 715 - 2 BEDROOM**



7TH FLOOR PLAN

**2 BEDROOM**

UNIT No : 7th Floor	715	
Suite Area	892.87	sq. ft.
Terrace/Balcony Area	184.60	sq. ft.
Total Sellable Area	1077.47	sq. ft.

Disclaimer : all pictures, plans, layouts, information, data and details included in this brochure are indicative only and may change at any time up to the final "as built" status in accordance with the final designs of the project, regulatory approvals and planning permissions.

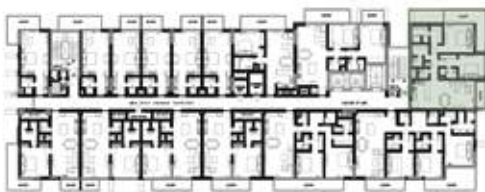


THE GROVE

by IMAN



**UNIT 801 - 2 BEDROOM**



8TH FLOOR PLAN

**2 BEDROOM**

UNIT No : 8th Floor	801	
Suite Area	1057.98	sq. ft.
Terrace/Balcony Area	220.88	sq. ft.
Total Sellable Area	1278.86	sq. ft.

Disclaimer : all pictures, plans, layouts, information, data and details included in this brochure are indicative only and may change at any time up to the final "as built" status in accordance with the final designs of the project, regulatory approvals and planning permissions.



THE GROVE

by IMAN



**UNIT 802 - 3 BEDROOM**



8TH FLOOR PLAN

**3 BEDROOM**

UNIT No : 8th Floor	802	
Suite Area	1442.90	sq. ft.
Terrace/Balcony Area	262.96	sq. ft.
Total Sellable Area	1705.86	sq. ft.

Disclaimer : all pictures, plans, layouts, information, data and details included in this brochure are indicative only and may change at any time up to the final "as built" status in accordance with the final designs of the project, regulatory approvals and planning permissions.



THE GROVE

by IMAN



**UNIT 803 - 2 BEDROOM**



8TH FLOOR PLAN

2 BEDROOM		
UNIT No : 8th Floor Plan		803
Suite Area	1121.60	sq.
Terrace/Balcony Area	145.64	sq.
Total Sellable Area	1267.24	sq.

Disclaimer : all pictures, plans, layouts, information, data and details included in this brochure are indicative only and may change at any time up to the "as built" status in accordance with the final designs of the project, regulatory approvals and planning permissions.



THE GROVE

by IMAN



**UNIT 804 - 1 BEDROOM**



8TH FLOOR PLAN

**1 BEDROOM**

UNIT No : 8th Floor Plan	804
Suite Area	699.98 sq. ft.
Terrace/Balcony Area	81.91 sq. ft.
Total Sellable Area	781.89 sq. ft.

Disclaimer : all pictures, plans, layouts, information, data and details included in this brochure are indicative only and may change at any time up to the final "as built" status in accordance with the final designs of the project, regulatory approvals and planning permissions.

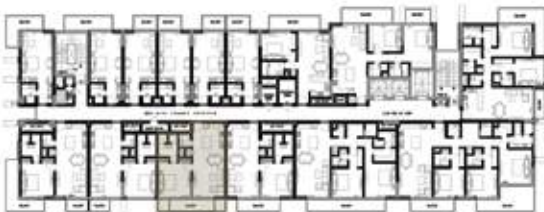


THE GROVE

by IMAN



**UNIT 805 - 1 BEDROOM**



8TH FLOOR PLAN

**1 BEDROOM**

UNIT No : 8th Floor Plan	805
Suite Area	699.98 sq. ft.
Terrace/Balcony Area	86.65 sq. ft.
Total Sellable Area	786.63 sq. ft.

Disclaimer : all pictures, plans, layouts, information, data and details included in this brochure are indicative only and may change at any time up to the final "as built" status in accordance with the final designs of the project, regulatory approvals and planning permissions.

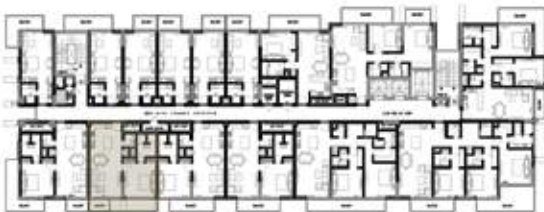


THE GROVE

by IMAN



**UNIT 806 - 1 BEDROOM**



8TH FLOOR PLAN

**1 BEDROOM**

UNIT No : 8th Floor Plan	806
Suite Area	699.65 sq. ft.
Terrace/Balcony Area	39.83 sq. ft.
Total Sellable Area	739.48 sq. ft.

Disclaimer : all pictures, plans, layouts, information, data and details included in this brochure are indicative only and may change at any time up to the final "as built" status in accordance with the final designs of the project, regulatory approvals and planning permissions.



THE GROVE

by IMAN





**UNIT 807 - 1 BEDROOM**



8TH FLOOR PLAN

**1 BEDROOM**

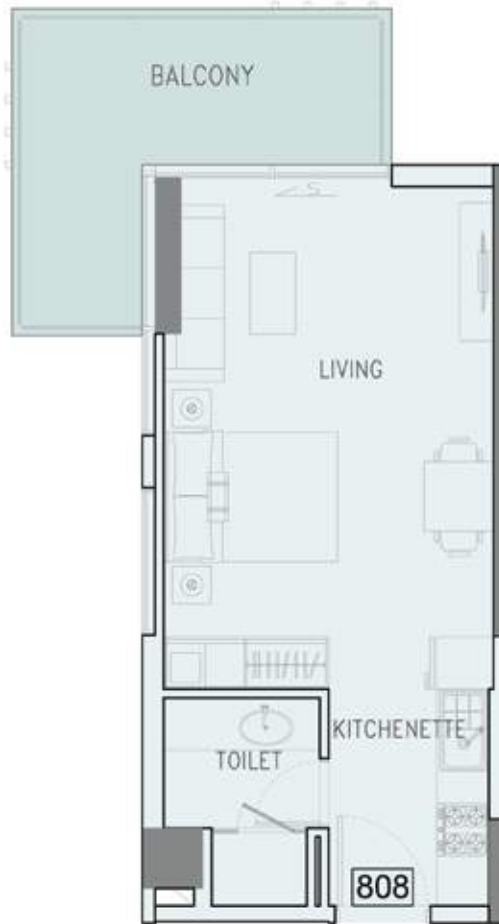
UNIT No : 8th Floor Plan	807
Suite Area	697.61 sq. ft.
Terrace/Balcony Area	197.95 sq. ft.
Total Sellable Area	895.56 sq. ft.

Disclaimer : all pictures, plans, layouts, information, data and details included in this brochure are indicative only and may change at any time up to the final "as built" status in accordance with the final designs of the project, regulatory approvals and planning permissions.



THE GROVE

by IMAN



**UNIT 808 - STUDIO**



8TH FLOOR PLAN

**STUDIO**

UNIT No : 8th Floor	808	
Suite Area	362.96	sq. ft.
Terrace/Balcony Area	114.20	sq. ft.
Total Sellable Area	477.16	sq. ft.

Disclaimer : all pictures, plans, layouts, information, data and details included in this brochure are indicative only and may change at any time up to the final "as built" status in accordance with the final designs of the project, regulatory approvals and planning permissions.



THE GROVE

by IMAN



**UNIT 809 - STUDIO**



8TH FLOOR PLAN

**STUDIO**

UNIT No : 8th Floor	809	
Suite Area	363.28	sq. ft.
Terrace/Balcony Area	114.10	sq. ft.
Total Sellable Area	477.38	sq. ft.

Disclaimer : all pictures, plans, layouts, information, data and details included in this brochure are indicative only and may change at any time up to the final "as built" status in accordance with the final designs of the project, regulatory approvals and planning permissions.



THE GROVE

by IMAN



**UNIT 810 - STUDIO**



8TH FLOOR PLAN

**STUDIO**

UNIT No : 8th Floor	810	
Suite Area	360.27	sq. ft.
Terrace/Balcony Area	53.93	sq. ft.
Total Sellable Area	414.20	sq. ft.

Disclaimer : all pictures, plans, layouts, information, data and details included in this brochure are indicative only and may change at any time up to the final "as built" status in accordance with the final designs of the project, regulatory approvals and planning permissions.



THE GROVE

by IMAN



**UNIT 811 - STUDIO**



8TH FLOOR PLAN

**STUDIO**

UNIT No : 8th Floor	811	
Suite Area	358.54	sq. ft.
Terrace/Balcony Area	54.79	sq. ft.
Total Sellable Area	413.33	sq. ft.

Disclaimer : all pictures, plans, layouts, information, data and details included in this brochure are indicative only and may change at any time up to the final "as built" status in accordance with the final designs of the project, regulatory approvals and planning permissions.



THE GROVE

by IMAN



**UNIT 812 - STUDIO**



8TH FLOOR PLAN

**STUDIO**

UNIT No : 8th Floor	812	
Suite Area	360.27	sq. ft.
Terrace/Balcony Area	53.93	sq. ft.
Total Sellable Area	414.20	sq. ft.

Disclaimer : all pictures, plans, layouts, information, data and details included in this brochure are indicative only and may change at any time up to the final "as built" status in accordance with the final designs of the project, regulatory approvals and planning permissions.



THE GROVE

by IMAN



**UNIT 813 - STUDIO**



8TH FLOOR PLAN

**STUDIO**

UNIT No : 8th Floor	813	
Suite Area	360.05	sq. ft.
Terrace/Balcony Area	54.79	sq. ft.
Total Sellable Area	414.84	sq. ft.

Disclaimer : all pictures, plans, layouts, information, data and details included in this brochure are indicative only and may change at any time up to the final "as built" status in accordance with the final designs of the project, regulatory approvals and planning permissions.



THE GROVE

by IMAN



## UNIT 814 - 1 BEDROOM



8TH FLOOR PLAN

### 1 BEDROOM

UNIT No : 8th Floor Plan	814
Suite Area	581.57 sq. ft.
Terrace/Balcony Area	117.22 sq. ft.
Total Sellable Area	698.79 sq. ft.

Disclaimer : all pictures, plans, layouts, information, data and details included in this brochure are indicative only and may change at any time up to the final "as built" status in accordance with the final designs of the project, regulatory approvals and planning permissions.



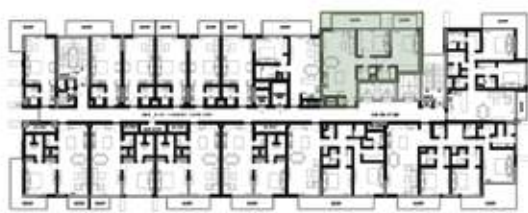
THE GROVE

by IMAN





**UNIT 815 - 2 BEDROOM**



8TH FLOOR PLAN

**2 BEDROOM**

UNIT No : 8th Floor	815	
Suite Area	892.87	sq. ft.
Terrace/Balcony Area	184.60	sq. ft.
Total Sellable Area	1077.47	sq. ft.

Disclaimer : all pictures, plans, layouts, information, data and details included in this brochure are indicative only and may change at any time up to the final "as built" status in accordance with the final designs of the project, regulatory approvals and planning permissions.



THE GROVE

by IMAN



**UNIT 901 - 2 BEDROOM**



9TH FLOOR

**2 BEDROOM**

UNIT No : 9th Floor Plan	901
Suite Area	1061.65 sq. ft.
Terrace/Balcony Area	230.45 sq. ft.
Total Sellable Area	1292.10 sq. ft.

Disclaimer : all pictures, plans, layouts, information, data and details included in this brochure are indicative only and may change at any time up to the final "as built" status in accordance with the final designs of the project, regulatory approvals and planning permissions.



THE GROVE

by IMAN



**UNIT 902 - 3 BEDROOM**



9TH FLOOR

**3 BEDROOM**

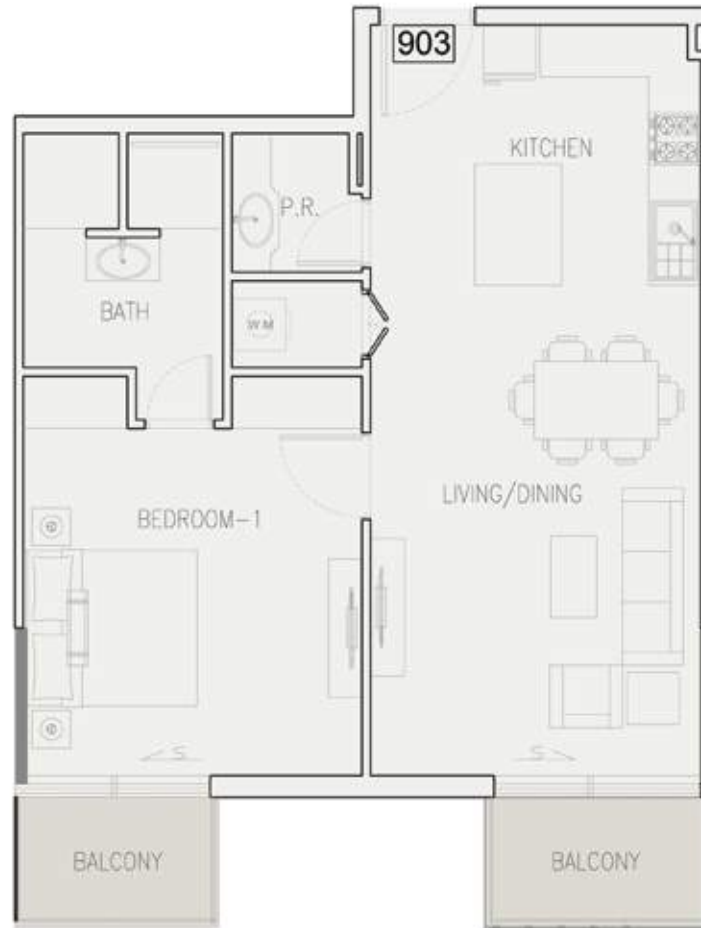
UNIT No : 9th Floor Plan	902
Suite Area	1538.81 sq. ft.
Terrace/Balcony Area	1021.39 sq. ft.
Total Sellable Area	2560.20 sq. ft.

Disclaimer : all pictures, plans, layouts, information, data and details included in this brochure are indicative only and may change at any time up to the final "as built" status in accordance with the final designs of the project, regulatory approvals and planning permissions.



THE GROVE

by IMAN



**UNIT 903 - 1 BEDROOM**



9TH FLOOR

**1 BEDROOM**

UNIT No : 9th Floor Plan	903
Suite Area	713.00 sq. ft.
Terrace/Balcony Area	76.86 sq. ft.
Total Sellable Area	789.86 sq. ft.

Disclaimer : all pictures, plans, layouts, information, data and details included in this brochure are indicative only and may change at any time up to the final "as built" status in accordance with the final designs of the project, regulatory approvals and planning permissions.



THE GROVE

by IMAN



**UNIT 904 - 2 BEDROOM**



9TH FLOOR

**2 BEDROOM**

UNIT No : 9th Floor Plan	904
Suite Area	1099.10 sq. ft.
Terrace/Balcony Area	126.59 sq. ft.
Total Sellable Area	1225.69 sq. ft.

Disclaimer : all pictures, plans, layouts, information, data and details included in this brochure are indicative only and may change at any time up to the final "as built" status in accordance with the final designs of the project, regulatory approvals and planning permissions.



THE GROVE

by IMAN



**UNIT 905 - 3 BEDROOM**



9TH FLOOR

**3 BEDROOM**

UNIT No : 9th Floor Plan	905
Suite Area	1530.84 sq. ft.
Terrace/Balcony Area	813.86 sq. ft.
Total Sellable Area	2344.70 sq. ft.

Disclaimer : all pictures, plans, layouts, information, data and details included in this brochure are indicative only and may change at any time up to the final "as built" status in accordance with the final designs of the project, regulatory approvals and planning permissions.



THE GROVE

by IMAN



**UNIT 906 - 3 BEDROOM**



**3 BEDROOM**

UNIT No : 9th Floor Plan	906
Suite Area	1496.40 sq. ft.
Terrace/Balcony Area	733.99 sq. ft.
Total Sellable Area	2230.39 sq. ft.

Disclaimer : all pictures, plans, layouts, information, data and details included in this brochure are indicative only and may change at any time up to the final "as built" status in accordance with the final designs of the project, regulatory approvals and planning permissions.



THE GROVE  
by IMAN



**UNIT 907 - 1 BEDROOM**



9TH FLOOR

**1 BEDROOM**

UNIT No : 9th Floor Plan	907
Suite Area	584.48 sq. ft.
Terrace/Balcony Area	137.13 sq. ft.
Total Sellable Area	721.61 sq. ft.

Disclaimer : all pictures, plans, layouts, information, data and details included in this brochure are indicative only and may change at any time up to the final "as built" status in accordance with the final designs of the project, regulatory approvals and planning permissions.



THE GROVE

by IMAN





**UNIT 908 - 2 BEDROOM**

**2 BEDROOM**



9TH FLOOR

UNIT No : 9th Floor Plan	908
Suite Area	900.30 sq. ft.
Terrace/Balcony Area	189.12 sq. ft.
Total Sellable Area	1089.42 sq. ft.

Disclaimer : all pictures, plans, layouts, information, data and details included in this brochure are indicative only and may change at any time up to the final "as built" status in accordance with the final designs of the project, regulatory approvals and planning permissions.



THE GROVE

by IMAN