



North Condo



EXCLUSIVE VILLAS AND APARTMENTS PROJECT IN PHUKET

General characteristics of the project | Infrastructure | Location advantages | Available apartments



📍 RAWAI BEACH, PHUKET

Exclusive condominium 30 meters from the beach

8,537,400 – 18,800,000 THB

Apartments price



70,3 – 127,4 sq.m
Area



Q1 2026
Handover

The unique concept of the project makes it a focal point for the entire Rawai area. Properties here have high rental potential regardless of the season.

There are 35 premium villas and 2 condominiums in the complex.

Rental Pool program for the remaining units - 40% of the income to the investor, 60% - to the management company, from its share it covers all expenses. Projected income: 5-10% p.a. The income is after the handover.

Installment for the construction period for the units without fixed income. Down payment is 35% (for low season, limited time).





📍 RAWAI BEACH, PHUKET

Exclusive project 30 meters from the beach



150 APARTMENTS

With premium designer furniture, decor and appliances



30 METRES FROM RAWAI BEACH

There are many bars and restaurants along the waterfront. Big Buddha is 30 minutes away



4500 SQ.M OF INFRASTRUCTURES

Shopping center, supermarket, sports complex and gym, 3 swimming pools with panoramic sea view, trampoline center, school and nursery school

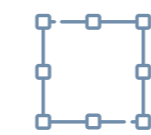






Rawai

Advantages of location



Phuket's largest district



Convenient transport accessibility



Located in the south of the island



Nayharn, Yanui, Ao San, Rawai Beaches



Popular with expats and winterers

5 KM

To Chalong Pier

40 KM

From the International Airport





Rawai

Advantages of location



Transfer services for residents of the complex



Free shuttle bus to Nai Harn Beach



Transfer to the neighbouring Bon Island





ADVANTAGES OF THE SOUTHERN RAWAI AREA OVER NORTHERN THALANG

1. Year-round rental demand

As Rawai is a neighborhood where both locals and expats live, but also tourists come for short-term rentals

2. High land cost

The cost of land in Rawai is 30-35% higher than, for example, in Bang Tao area

3. Fewer projects under construction

The number of projects under construction in Thalang area is 60, in Rawai - 10. Projects in Bang Tao are condominium complexes with large number of rooms; in Rawai - small, chamber projects

4. Land limitation

Total lack of large plots of land for development in Rawai area

5. Transportation logistics

Availability of convenient and well thought-out transportation logistics in Rawai area. The rate of construction of new projects far outpaces the rate of new road construction in Thalang





ADVANTAGES OF THE SOUTHERN RAWAI AREA OVER NORTHERN THALANG

6. Developed amenities

Availability of all the infrastructure for living and leisure on Rawai and the lack, at the moment, in Thalang area

7. Near kindergartens, schools, hospitals

Kindergartens, schools, hospitals are within walking distance or close proximity in Rawai. From Thalang district, these facilities can only be reached by transportation

8. High level of comfort and service

Rawai area and its projects are evolving towards a higher level of comfort and service. Thalang (particularly Bang Tao) is changing its original concept of exclusivity and moving into a more affordable segment

9. Affordable price of projects

Availability of unique projects at an affordable price in Rawai. A large number of similar projects in Thalang area

10. No tendency of overpricing

Due to the limited supply in the Rawai area, owners will have no need to dump prices





Sports complex

North condo

Villas

1

2

South condo

3

4

British pub

Shopping center

Rawai Beach





Lifestyle activities to explore



Shopping center: food supermarket and children's supermarket



Sports complex and gym



Hammam



3 shared pools with panoramic sea views



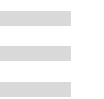
Private International School (Cambridge program)



Private kindergarten



10





Lifestyle activities to explore



Children's entertainment park and trampoline center



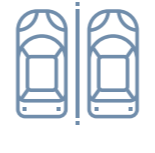
Professional Rejuvenation Clinic



Restaurants and a British pub



SPA and cosmetology



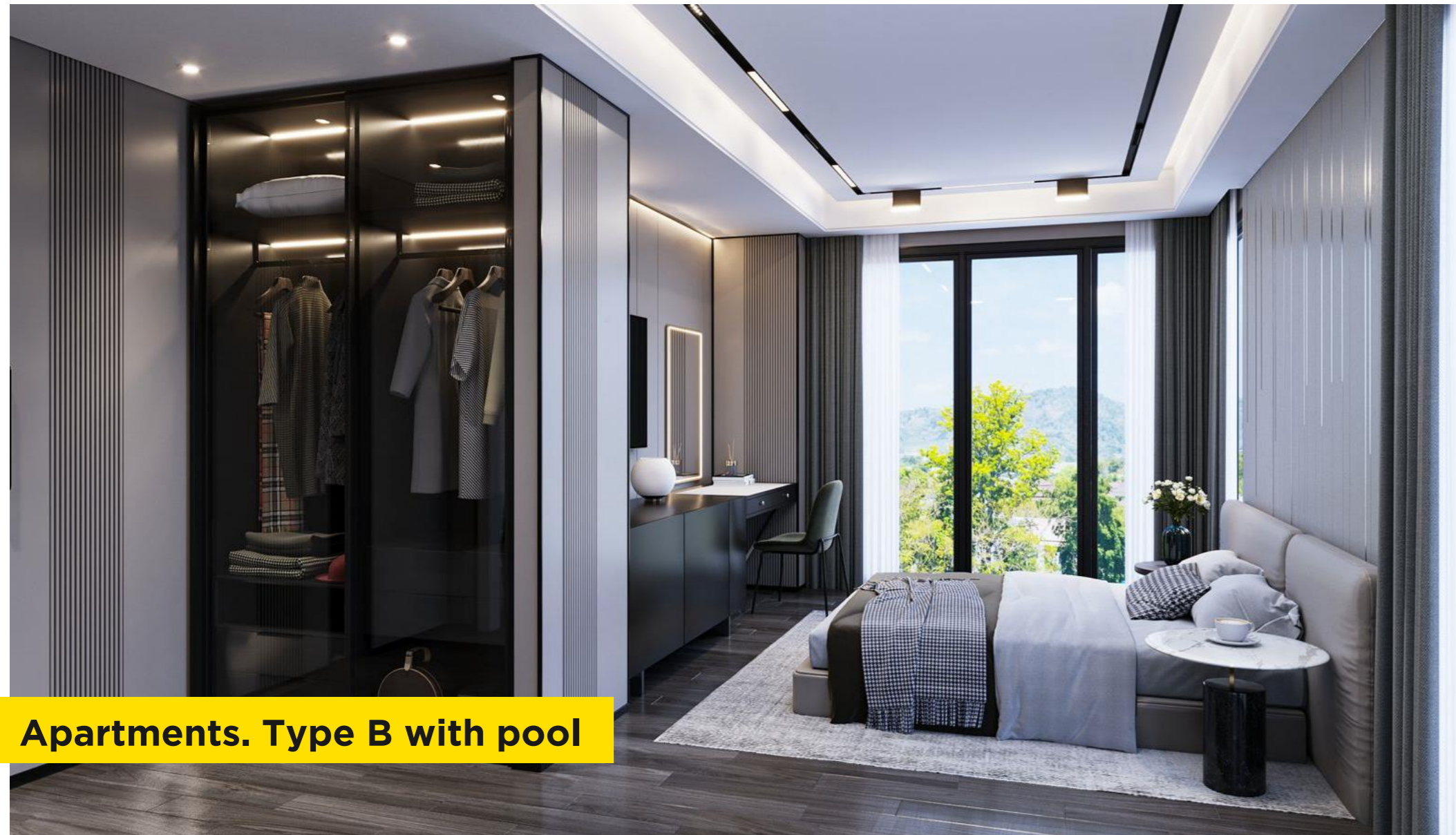
Underground parking





Apartments. Type A





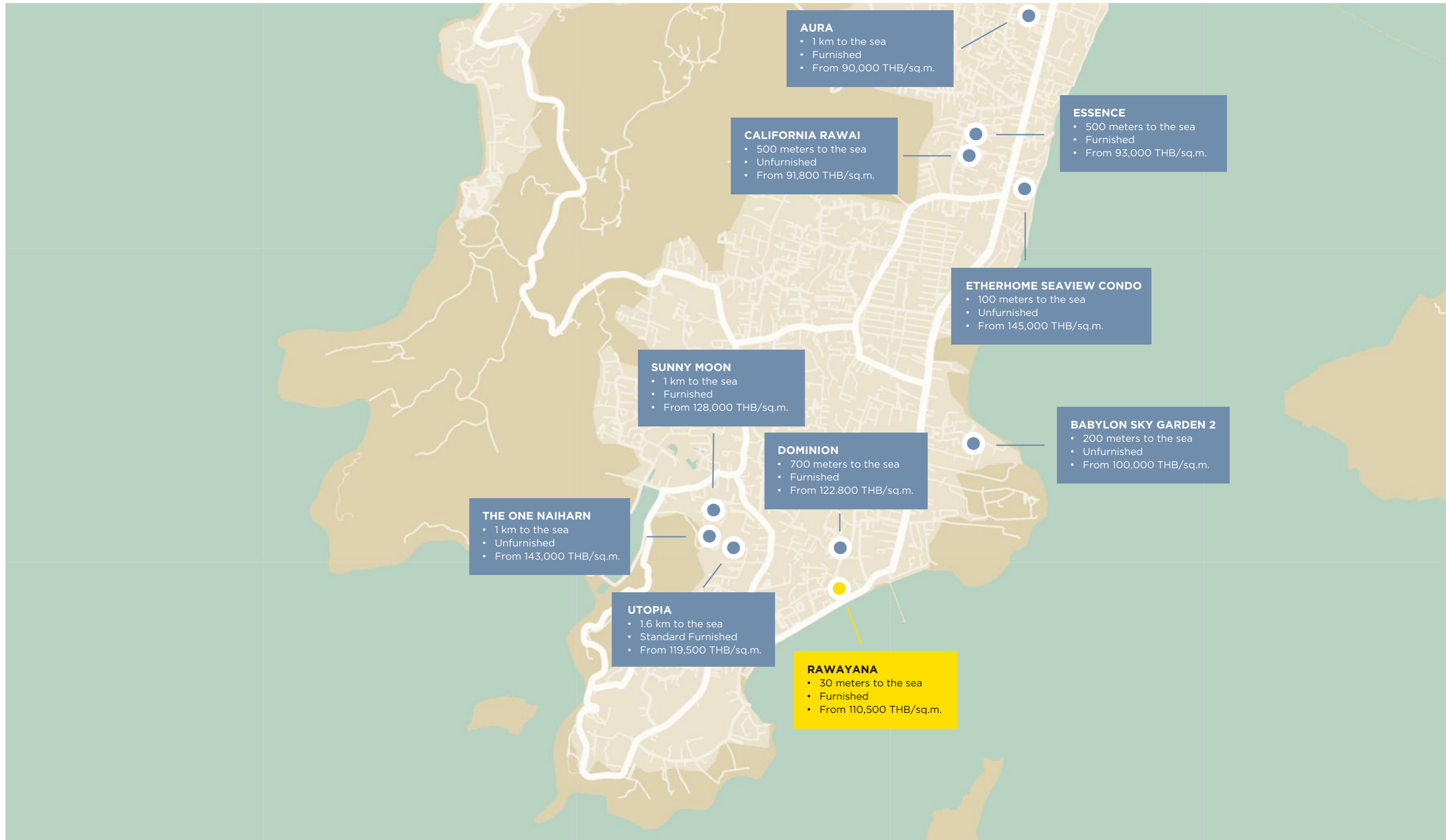
Apartments. Type B with pool



Competitive advantages

■ North condo





Master plan

 North condo



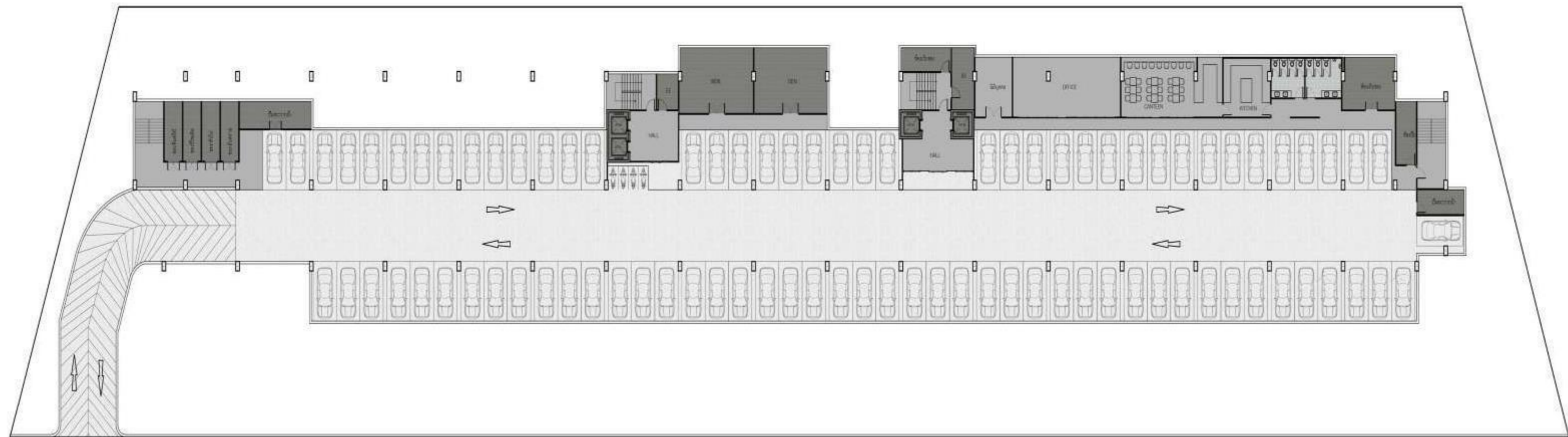


Floor plan

 North condo



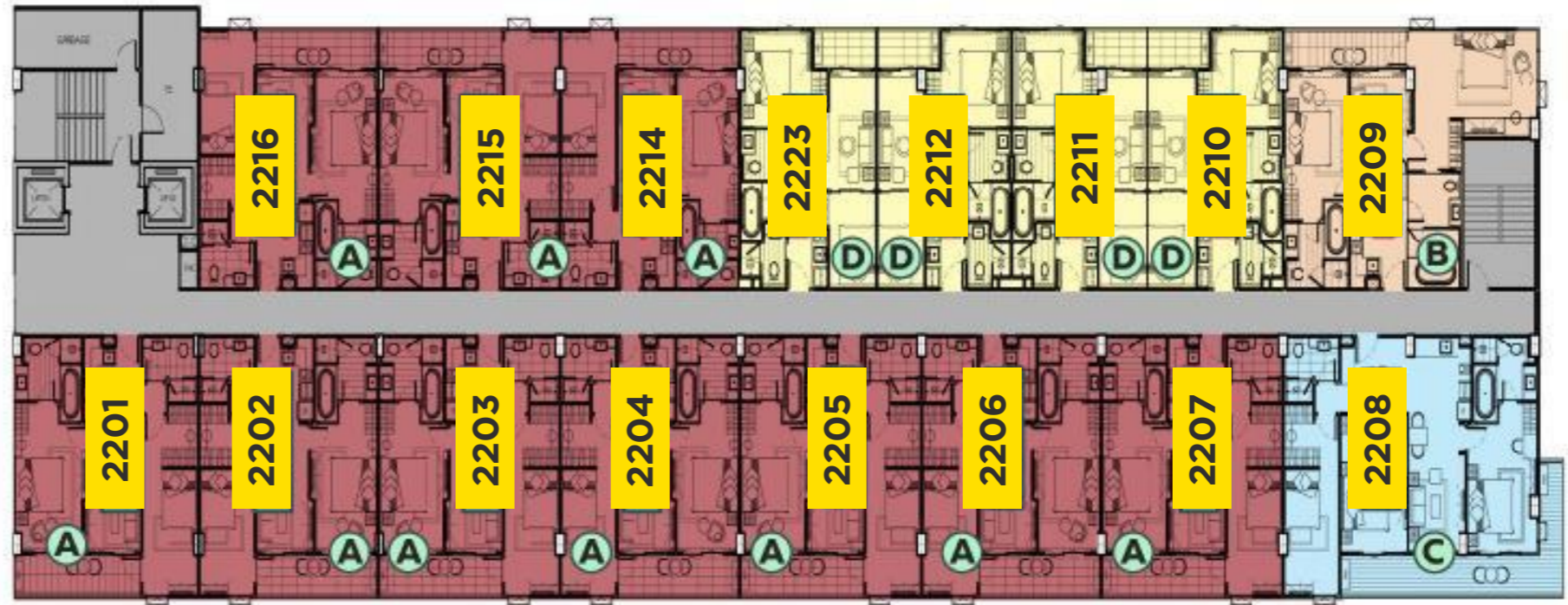
0
FLOOR



1 FLOOR



2 FLOOR



3 FLOOR



4 FLOOR



5 FLOOR



SEA VIEW



6 FLOOR



SEA VIEW



Available layouts

 North condo



Apartment Type A

9,630,000 THB

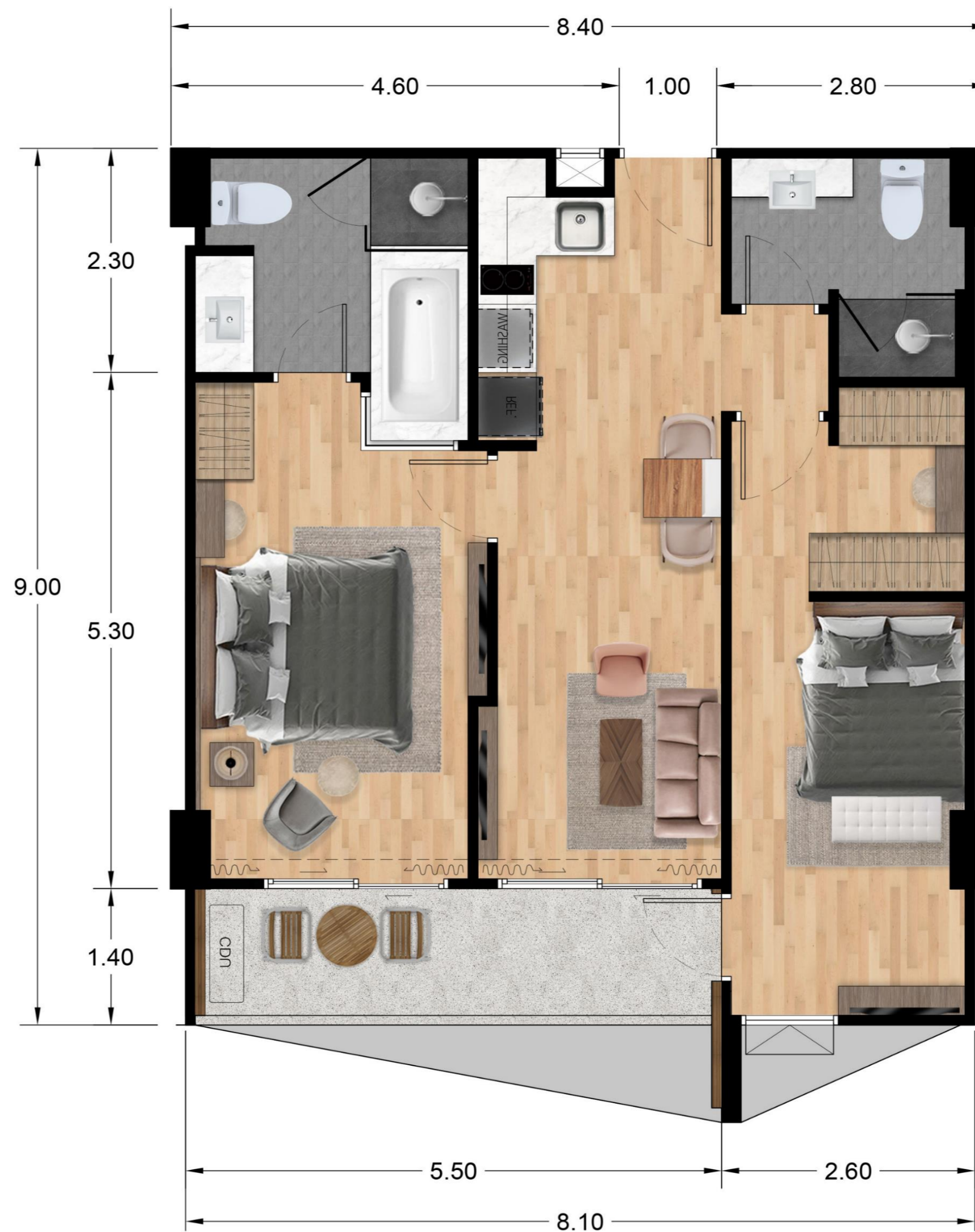
Starting price

70,3 SQ.M

Total area

 **2**
Bedrooms

 **2**
Bathrooms



Apartment Type B



10,260,800 THB

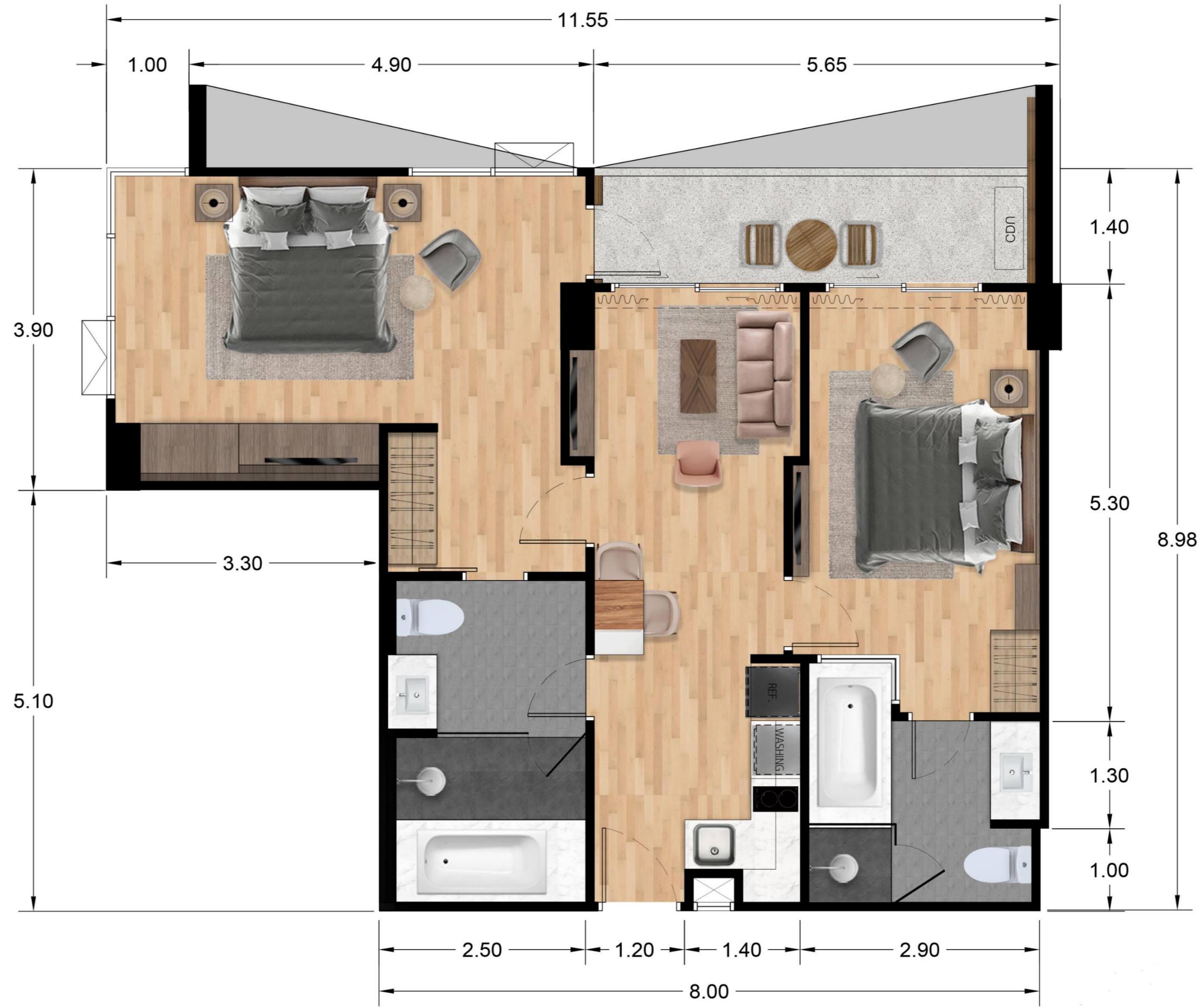
Starting price

82,3 sq.M

Total area

 **2**
Bedrooms

 **2**
Bathrooms



28



Apartment Type A

14,750,000 THB


Starting price

91,8 SQ.M

Total area

 **2**
Bedrooms

 **2**
Bathrooms

 Private access
to pool



Apartment Type A

15,260,000 THB

Starting price

102,5 sq.m

Total area



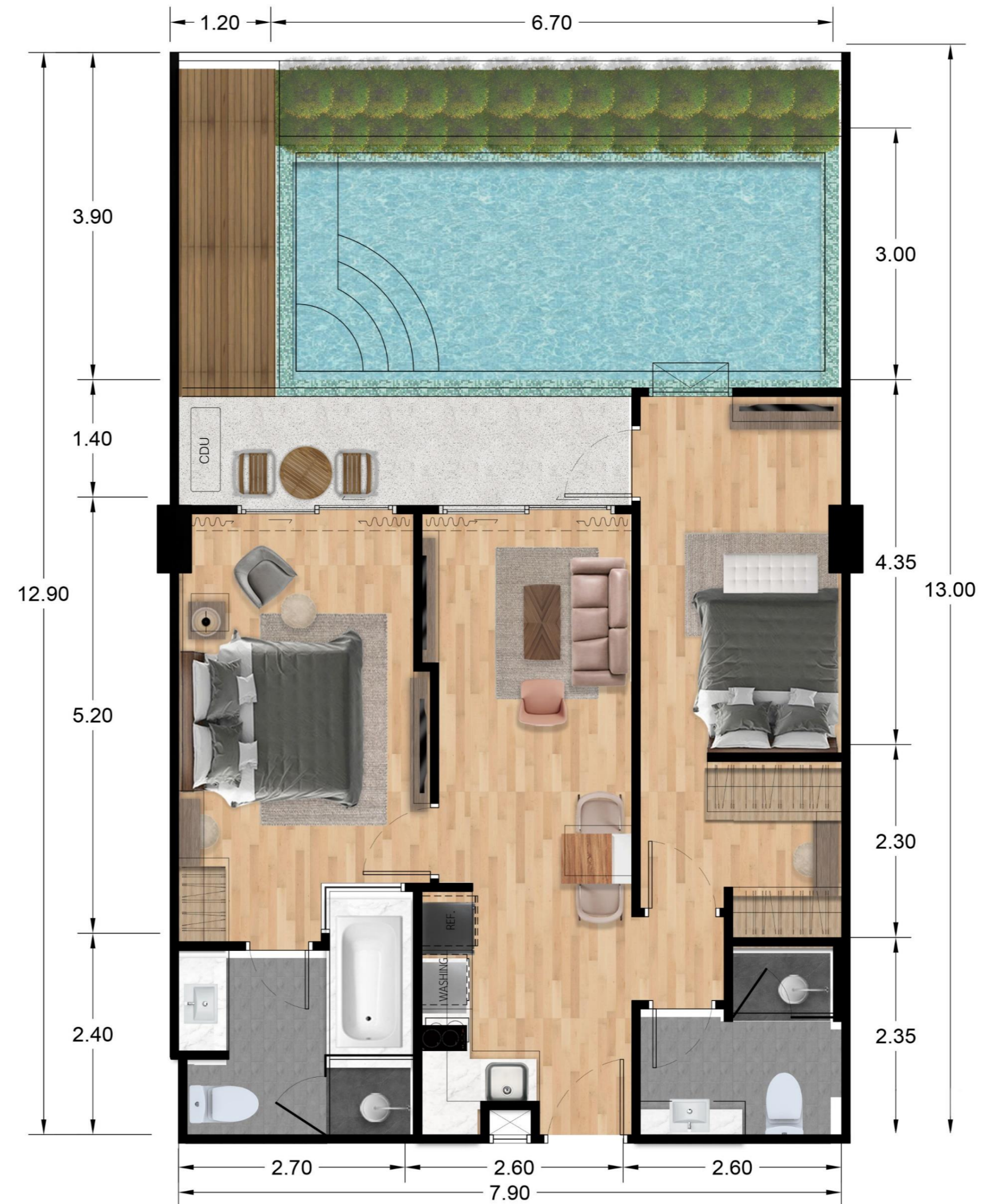
2
Bedrooms



2
Bathrooms



Private
pool



30



Apartment Type B

18,800,000 THB

Starting price

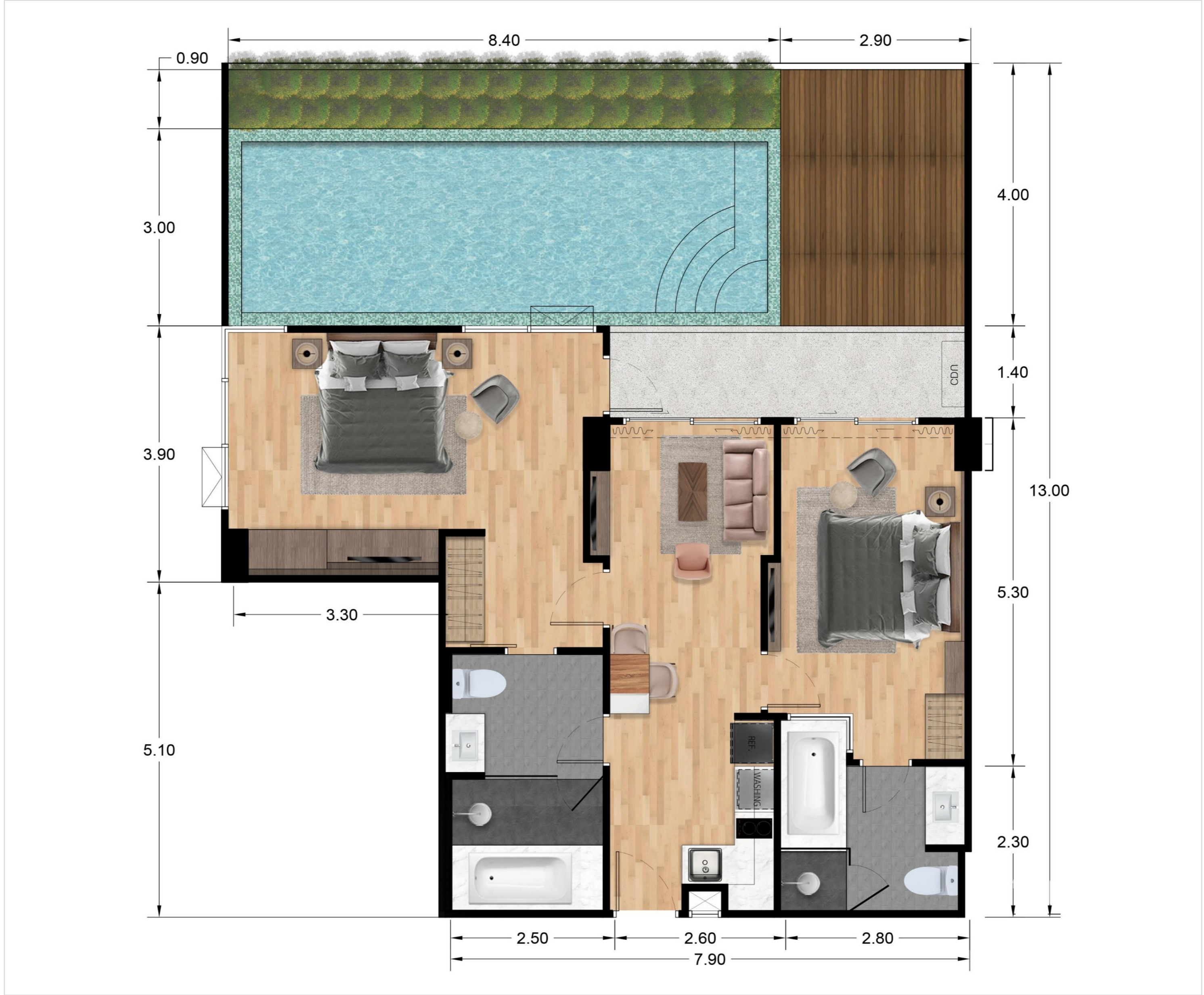
127,4 sq.M

Total area

2
Bedrooms

2
Bathrooms

Private
pool



Apartment Type C

14,870,000 THB

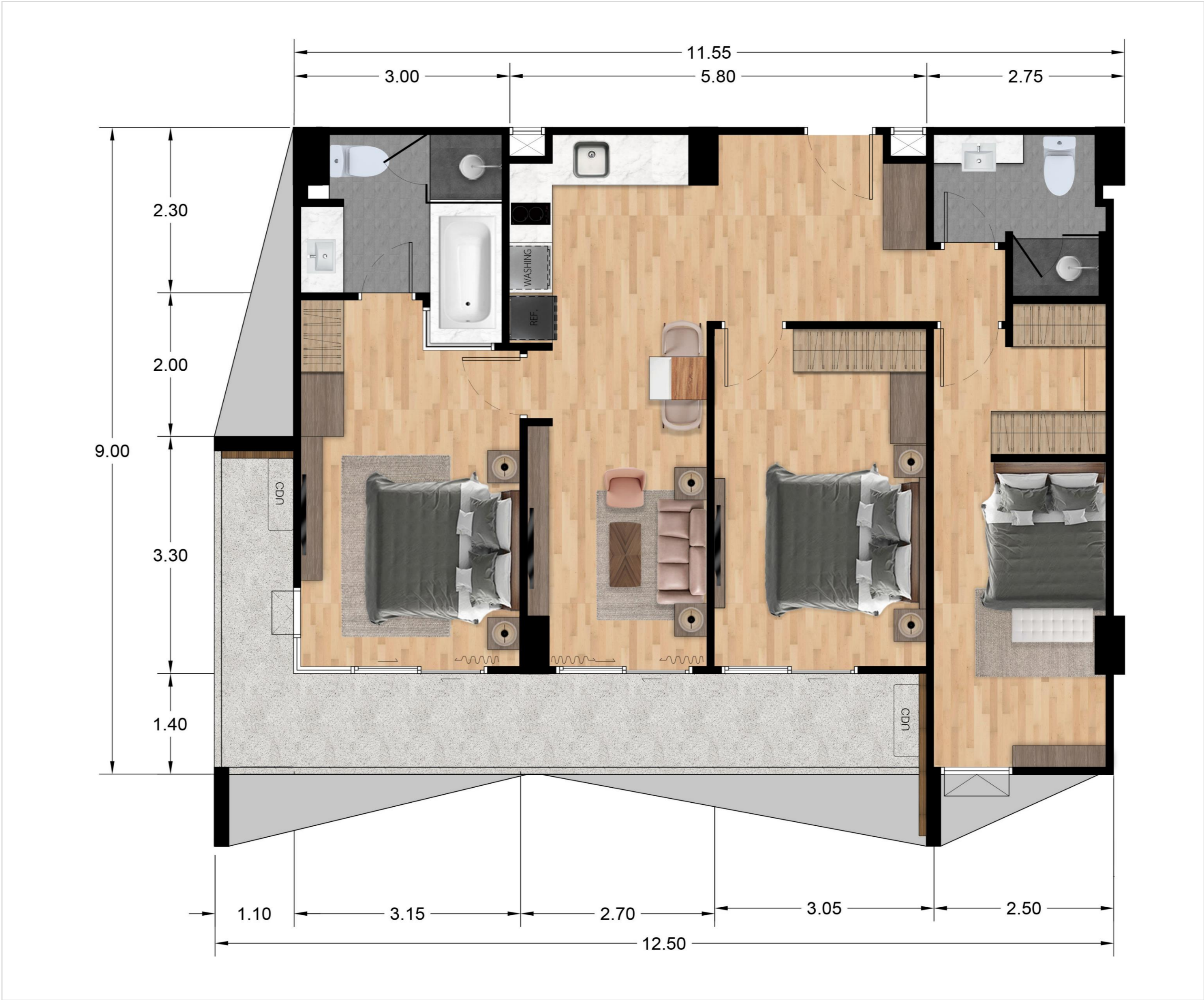
Starting price

104,3 SQ.M

Total area

3
Bedrooms

2
Bathrooms



Apartment Type D

SOLD OUT

6,184,500 THB

Starting price

53,5 sq.m

Total area

7% for 5 years

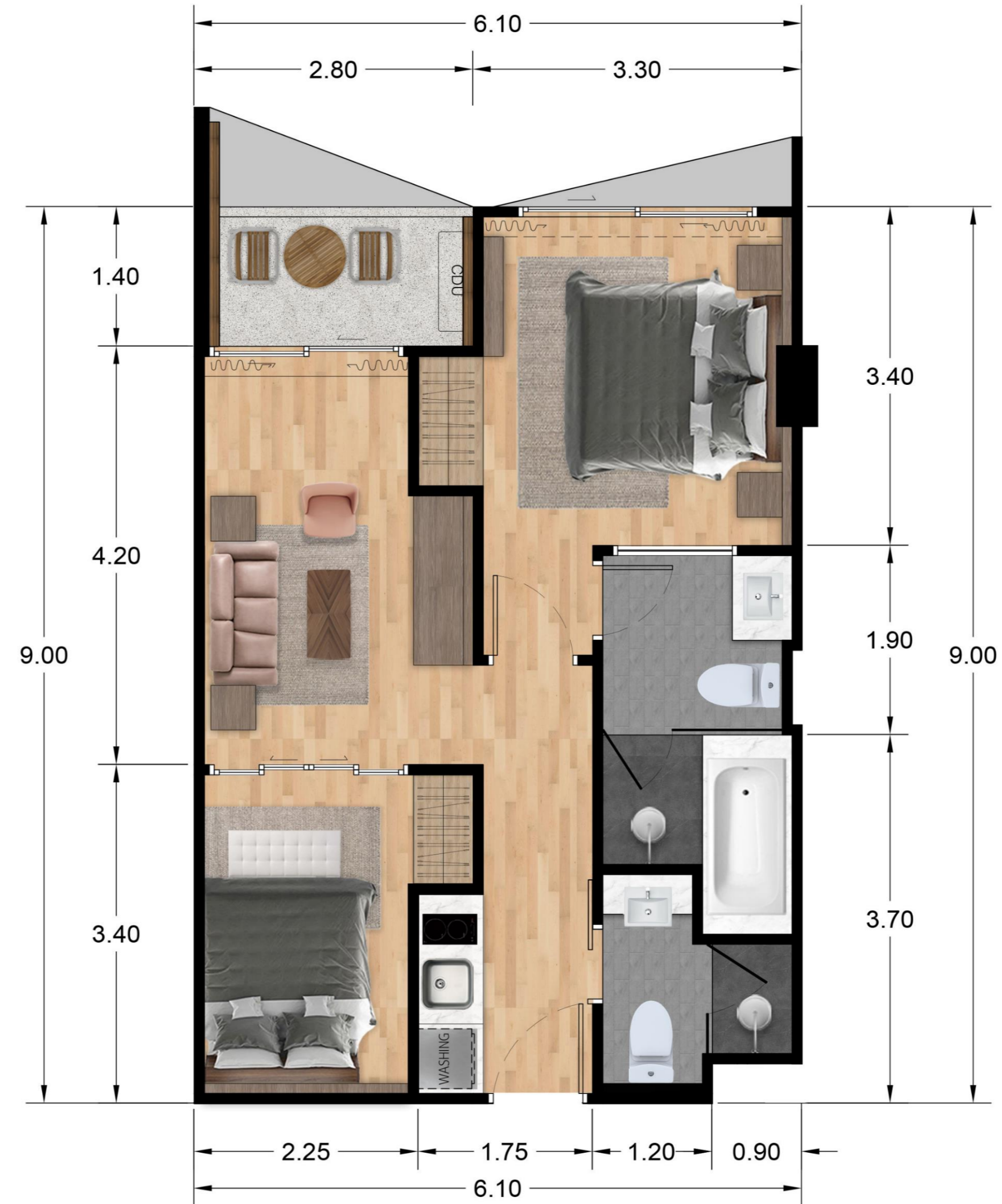
Fixed income



2
Bedrooms



2
Bathrooms









Additional expenses & Payment schedule

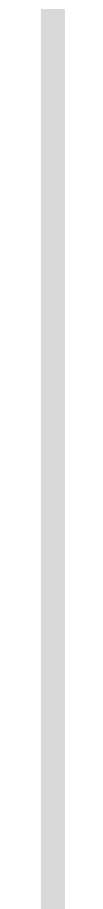
 North Condo



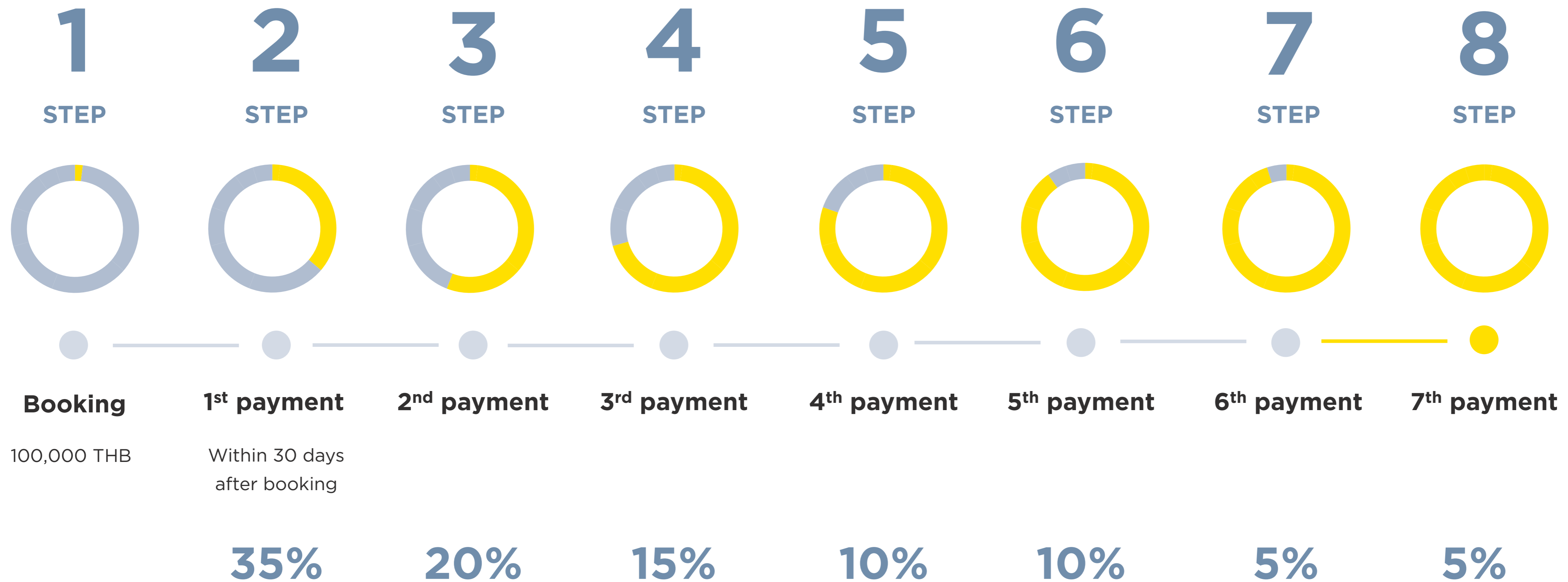
Additional expenses



 60 THB SQ.M Service per month Annual payment	 500 THB SQ.M Capital Improvement Fund One-time payment	 INCLUDED IN PRICE Furniture Package
 1.25 % Leasehold registration One-time payment	 2.25 % Freehold registration Registration fee - 350.000 THB One-time payment	 15.000 THB Installation of water and electricity meters One-time payment



Payment schedule



36



Awards





North condo



EXCLUSIVE VILLAS AND APARTMENTS PROJECT IN PHUKET

