

DARGLOBAL



Invest
in Luxury



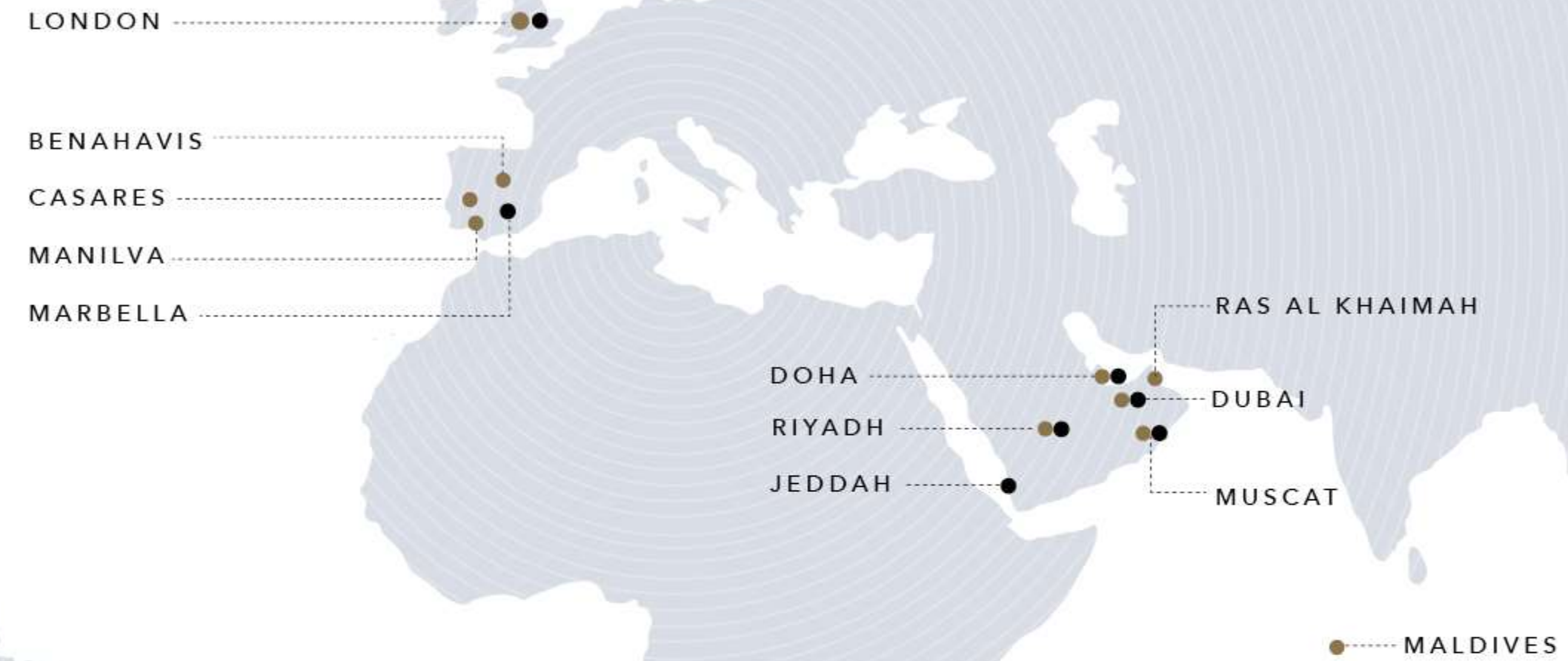
Delivering
Luxury Homes
to Global Citizens



DarGlobal at a *Glance*

7 GLOBAL SALES OFFICES
PROJECTS IN 10 CITIES

- OUR OFFICES
- OUR PROJECTS



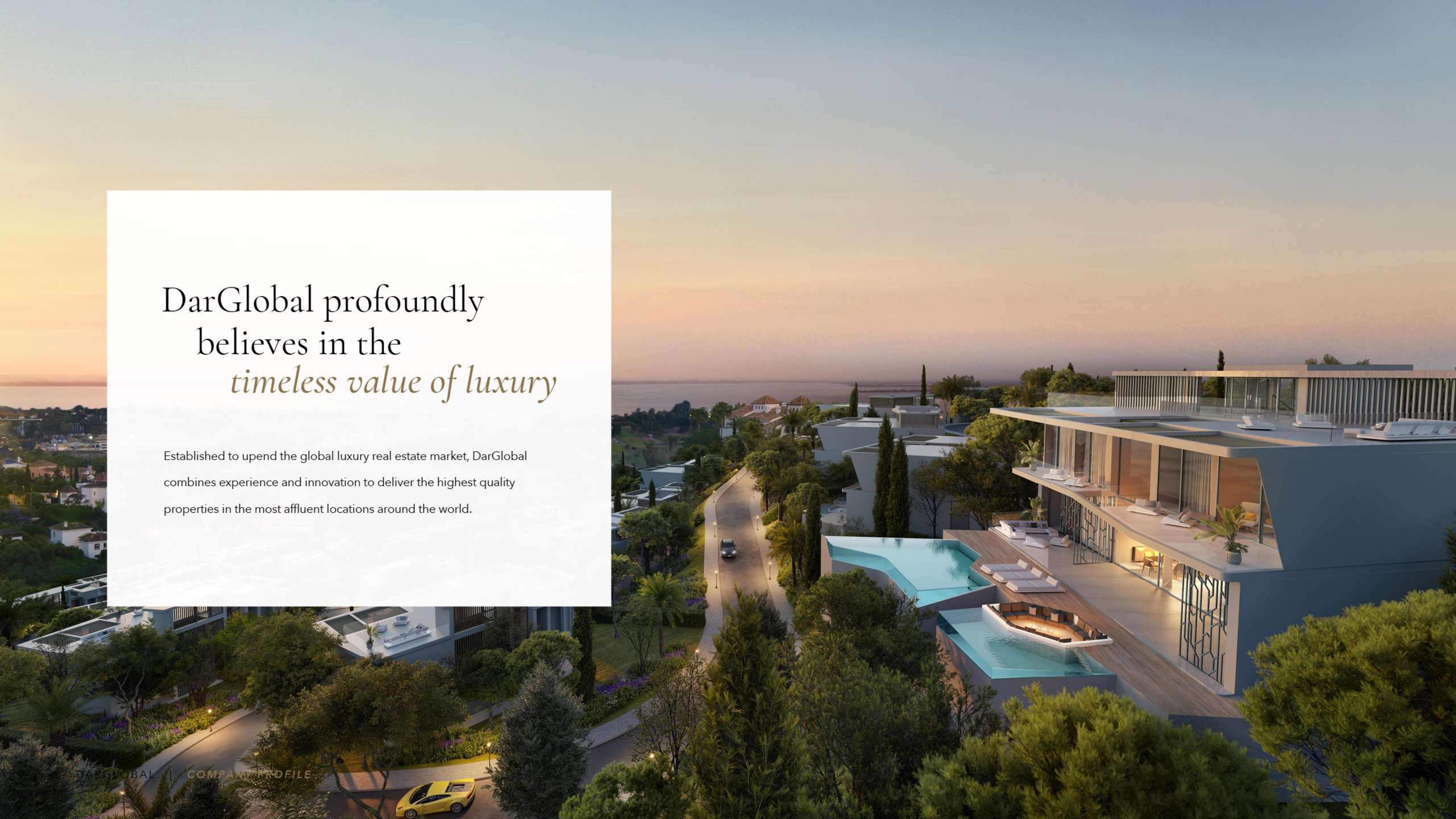


LONDON
STOCK
EXCHANGE

LISTED ON THE

*London
Stock Exchange*





DarGlobal profoundly
believes in the
timeless value of luxury

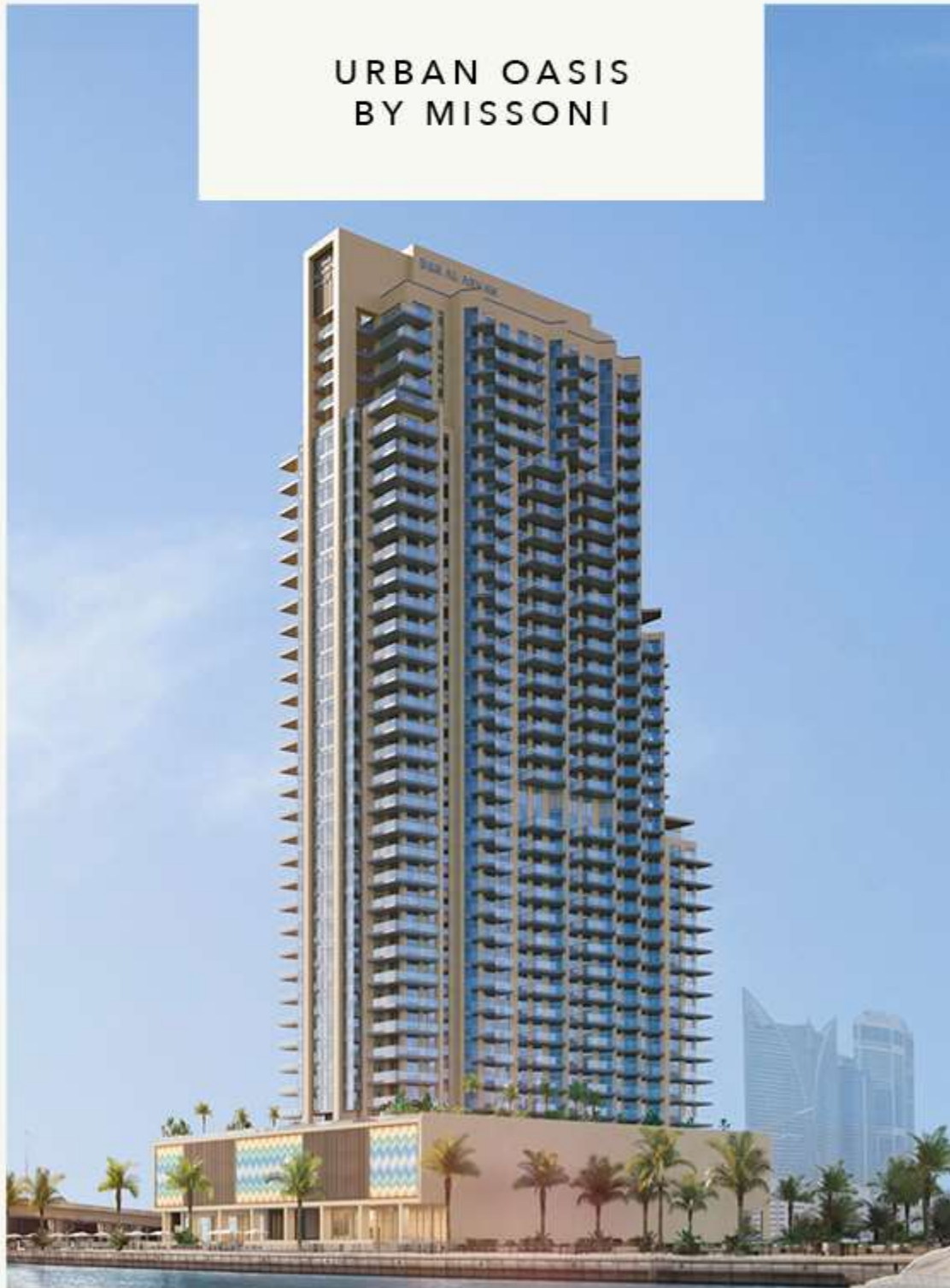
Established to upend the global luxury real estate market, DarGlobal combines experience and innovation to deliver the highest quality properties in the most affluent locations around the world.

Our Brand Partners

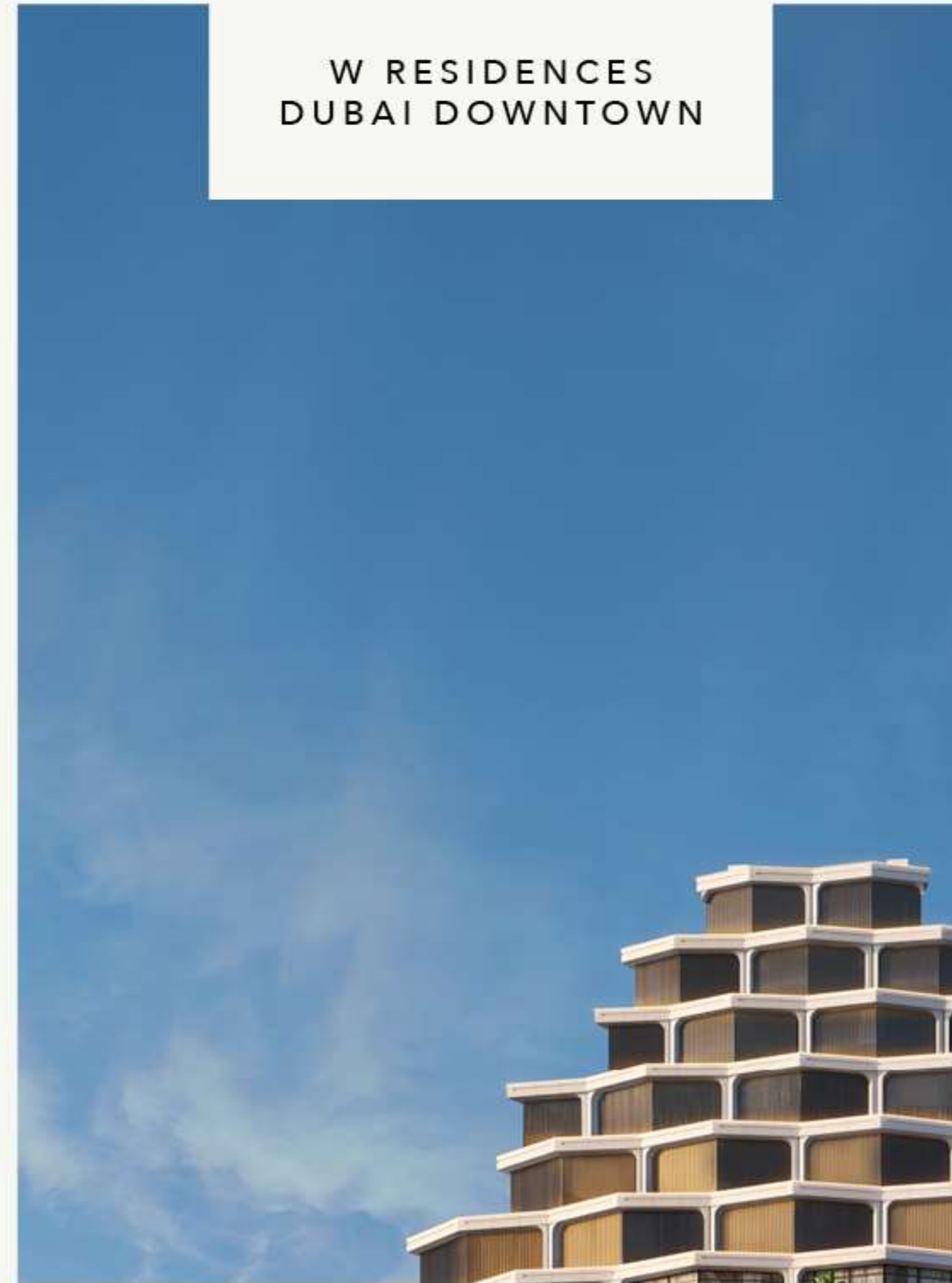


Key projects in *Dubai, UAE*

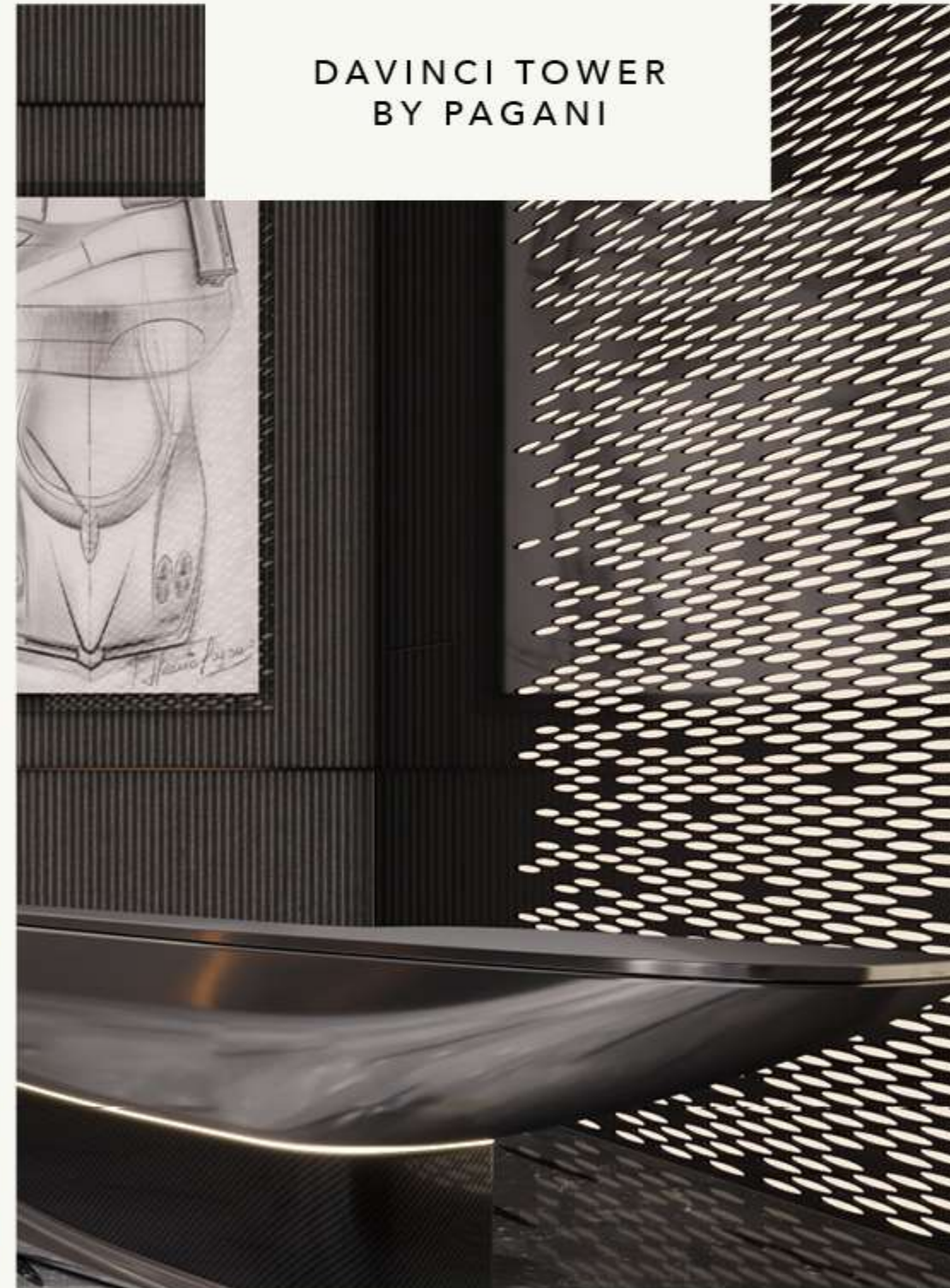
URBAN OASIS
BY MISSONI



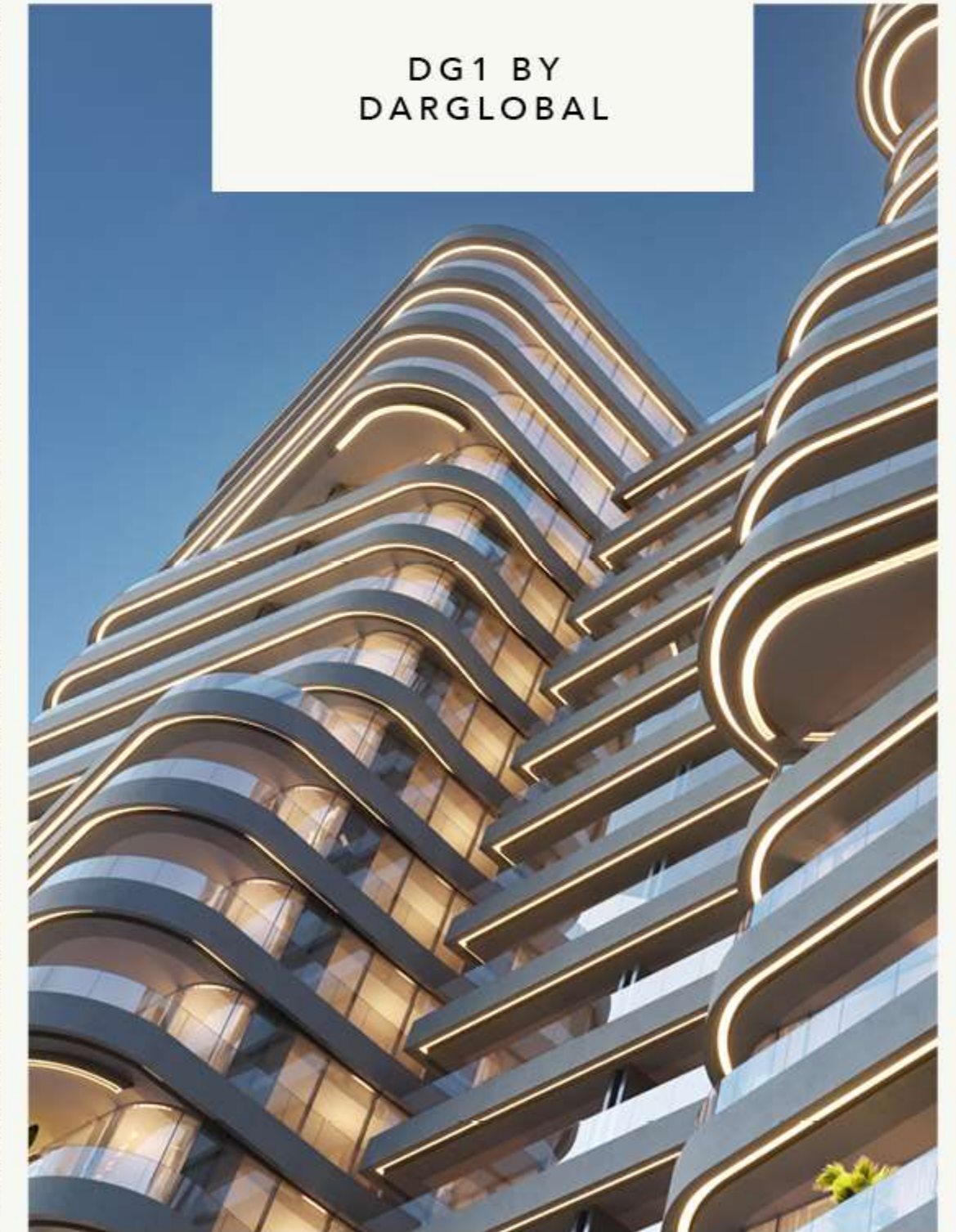
W RESIDENCES
DUBAI DOWNTOWN



DAVINCI TOWER
BY PAGANI



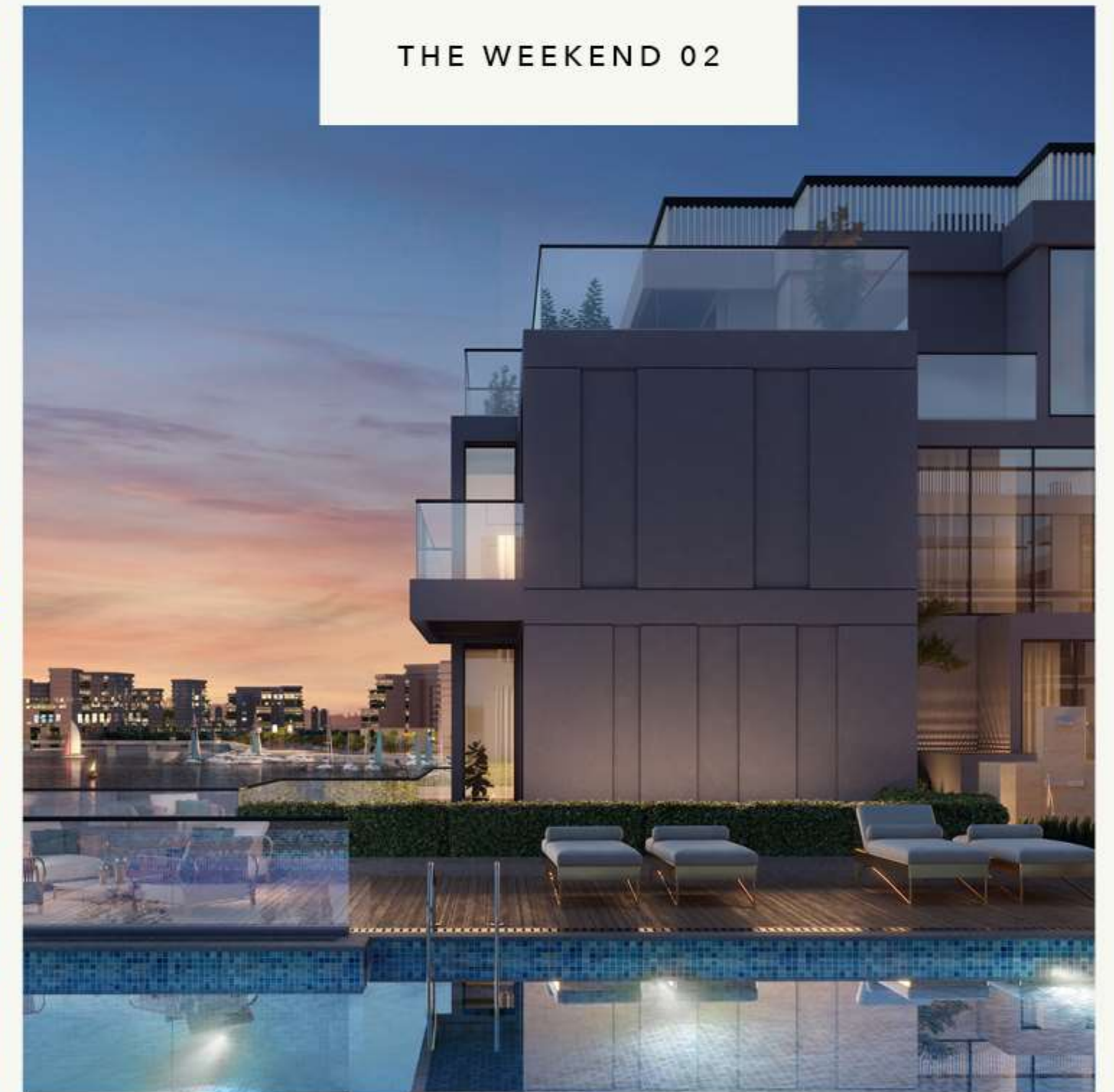
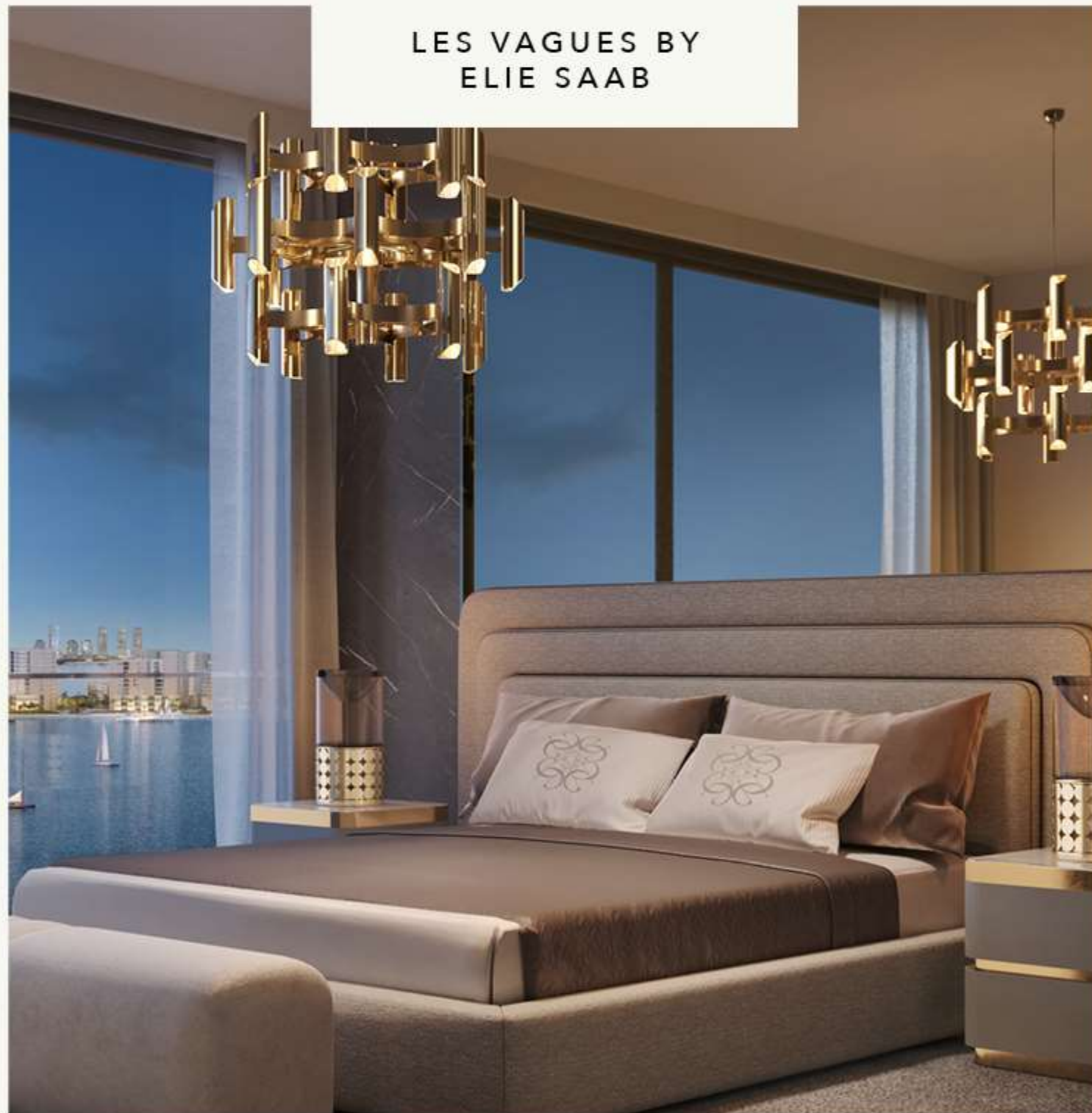
DG1 BY
DARGLOBAL



Key projects in *Ras Al Khaimah, UAE*



Key projects in *Doha, Qatar*



Key projects in *Muscat, Oman*



AIDA



TRUMP INTERNATIONAL HOTEL



TRUMP RESIDENCES



MARRIOTT RESIDENCES



CLIFF NIGHT CLUB



HANGING SUITES

Key projects in *London, UK*

THE MULLINER




Key projects in *Costa Del Sol, Spain*

TIERRA VIVA DESIGN INSPIRED BY
AUTOMOBILI LAMBORGHINI



MAREA INTERIORS BY MISSONI





DarGlobal, now coming
to *Saudi Arabia*

A Cultural Hub

HISTORIC SITES	10,000
CULTURAL SITES	OVER 100
UNESCO WORLD HERITAGE SITES	5
VISITORS AT SEASONAL EVENTS	7+ MILLION
ANNUAL TOURIST TARGET	MORE THAN 94 MILLION

Saudi Arabia boasts a rich cultural heritage with 10,000 historic sites and over 100 cultural sites. The country is home to 5 UNESCO world heritage sites, attracting millions of visitors. Seasonal entertainment events draw over 7 million visitors, contributing to the Kingdom's goal of attracting more than 94 million tourists annually.



Host to Expo 2030

Expo 2030 in Riyadh will be a transformative event, running from October 1, 2030, to March 31, 2031, under the theme "Together for a Foresighted Tomorrow." This landmark expo will showcase innovation and sustainability through captivating pavilions and cultural programs, fostering global connections while emphasizing Saudi Arabia's dedication to a sustainable future and its aspirations for global leadership.

Host to FIFA World Cup 2034

The 2034 FIFA World Cup will be a landmark event for Saudi Arabia, showcasing its rich culture and modern infrastructure across cities like Riyadh, Jeddah, Dammam, and Mecca. With state-of-the-art stadiums and vibrant festivities, the tournament aims to provide an unforgettable experience for fans and players alike, highlighting the Kingdom's ambition to become a global sports hub.



30-Year Corporate Tax Exemption

Foreign companies setting up regional headquarters in Saudi Arabia benefit from a generous 30-year exemption from withholding tax.



Premium Residency For Real Estate Owners

Invest in residential properties worth at least four million Saudi Riyals to obtain Premium Residency. Enjoy exclusive rights and the same residency duration as your property ownership.

- Ability to sponsor your direct family members, including children, spouses, and parents
- Ability to sponsor visit visas for relatives
- Get waivers on foreigner fee
- Enjoy same privileges as Saudi citizens when dealing with government offices



A Pillar of Economic Stability

The Saudi Arabian Riyal (SAR) is firmly pegged to the US Dollar (USD) at an exchange rate of approximately 3.75 SAR to 1 USD, ensuring economic stability and facilitating international trade.



0% Income Tax 0% Capital Gain

Benefit from %0 income tax rate & capital gain in Saudi Arabia, regardless of residency status.

Note: US citizens still need to file tax returns with the IRS.



Cutting-Edge Infrastructure Development

Massive infrastructure projects, new cities, airports, and transportation networks enhance investment attractiveness.





TRUMP

THE TRUMP ORGANIZATION

For more than four decades

The Trump Organization has set new standards of excellence as it has expanded its interests in world-class hotels, luxury residential real estate, top-tier office buildings, championship golf clubs, merchandise and entertainment and event management. This enduring commitment has afforded Trump the designation of arguably being the preeminent developer of luxury real estate in the world.

12 REASONS *to invest in* **TRUMP BRAND IN REAL ESTATE**

01

Global Brand Recognition

The Trump brand is internationally renowned for luxury and exclusivity. Its strong reputation attracts affluent buyers worldwide.

02

High-Quality Standards

Trump properties are known for superior craftsmanship and premium finishes. This quality ensures long-term value retention.

03

Prime Locations

Developments are strategically situated in prestigious global cities. These locations offer excellent access to economic hubs.

04

Prestige and Exclusivity

Owning a Trump property signifies status and sophistication. It appeals to global elites seeking luxurious living.

05

Comprehensive Lifestyle Experience

Trump properties offer luxury amenities and world-class services. Residents enjoy a holistic and exclusive lifestyle.

06

Strong Hospitality Portfolio

Trump Hotels attract a global clientele with exceptional service standards. High occupancy rates ensure consistent revenue streams.

07

Diverse Investment Opportunities

The brand offers residential, commercial, and resort investment options. This diversity allows investors to balance risk and reward.

08

Association with World-Class Partners

Trump developments collaborate with renowned architects and designers. These partnerships enhance the properties' value and appeal.

09

Strong Marketing and Brand Loyalty

The brand enjoys loyal clientele and a strong resale market. Repeat customers and word-of-mouth boost long-term demand.

10

Iconic Architectural Design

Trump properties feature distinctive, landmark-worthy architectural designs. These iconic structures enhance the surrounding areas.

11

Exclusive Amenities and Services

Trump properties offer unique, top-tier amenities and luxury services. These features set them apart from other developments.

12

Proven Property Management Expertise

Expert management ensures high tenant satisfaction and optimal returns. Professional oversight maintains property standards.





DARGLOBAL

TRUMP
THE TRUMP ORGANIZATION

TWO UNIQUE LEGACIES, ONE UNITED VISION

DarGlobal and The Trump Organization is more than a partnership—it's the convergence of two global titans with a shared vision: to elevate luxury to extraordinary heights. Together, we craft residences that transcend expectations, blending timeless elegance with bold innovation.

TRUMP TOWER

JEDDAH

DARGLOBAL

Perfectly *Located*

05 min
THE BEACH

05 min
ROSEWOOD JEDDAH HOTEL

05 min
FOUR SEASONS JEDDAH

05 min
RAFFLES HOTEL JEDDAH

10 min
RED SEA MALL

13 min
F1 RACETRACK

19 min
JEDDAH INTERNATIONAL AIRPORT

TRUMP TOWER JEDDAH

ROSEWOOD JEDDAH HOTEL
RAFFLES JEDDAH

FOUR SEASONS
HOTEL & RESIDENCES

STC | FORMULA SAUDI
ARABIAN GRAND PRIX

RED SEA MALL

BEACH

JEDDAH
INTERNATIONAL AIRPORT

AL NAEEM
النعيم

AN NAHDAH
النهداه

AN NUZHAH
النزهة

AL MARWAH
المروة

دنوس مونت

AR RABWAH
الربوة

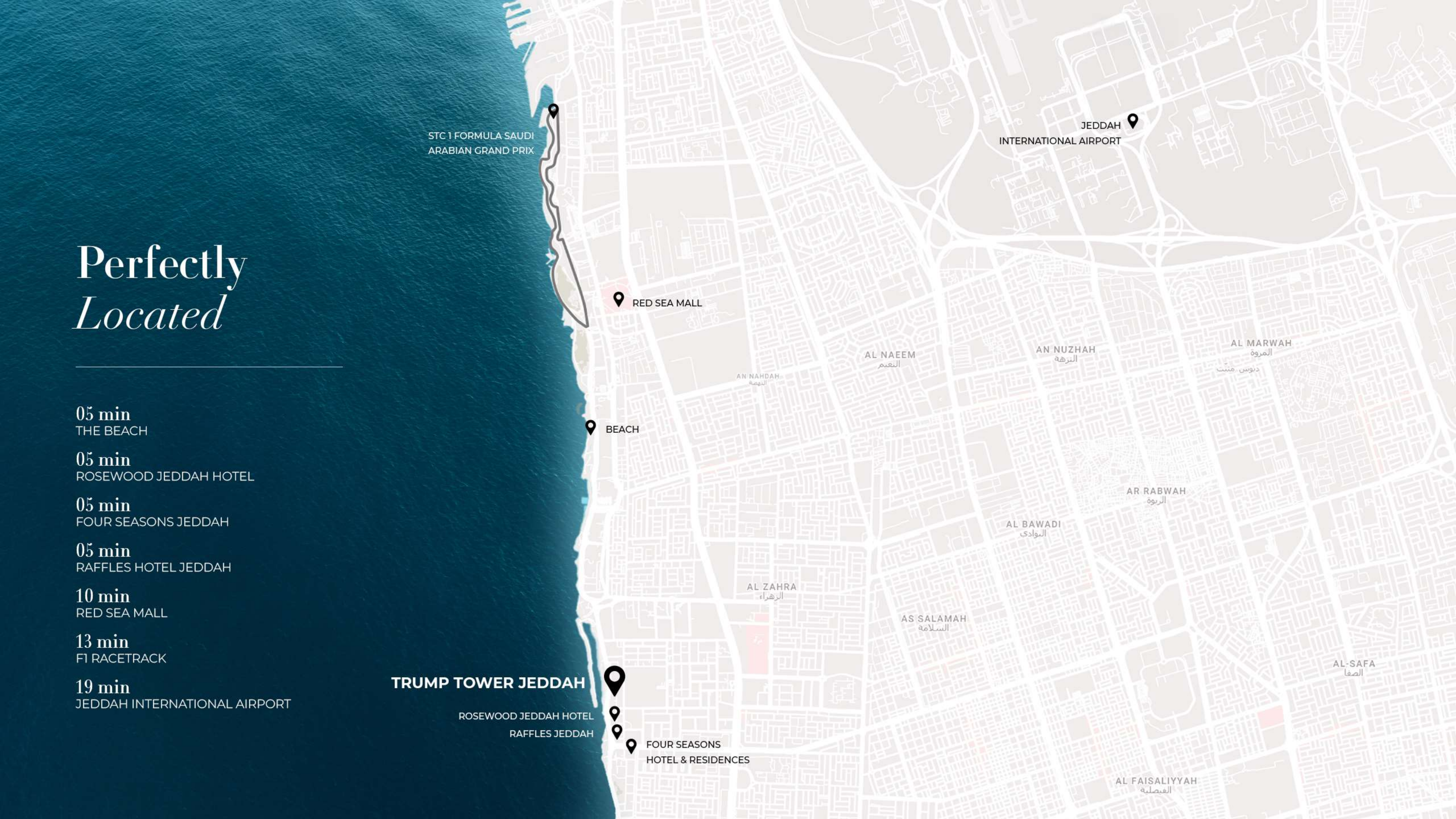
AL BAWADI
البوادي

AL ZAHRA
الزهراء

AS SALAMAH
السلامة

AL-SAFA
الصفا

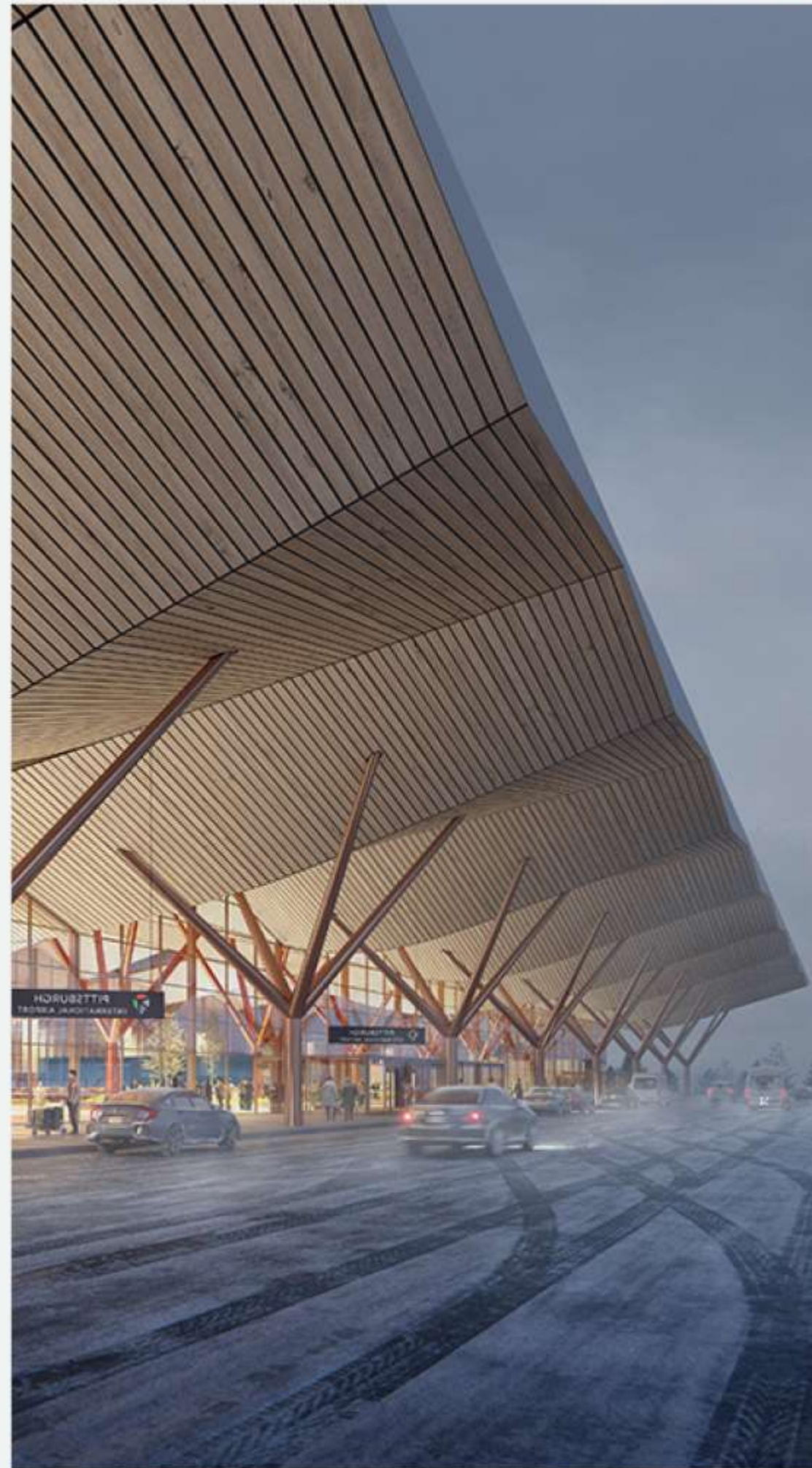
AL FAISALIYYAH
العصلية



CRAFTED BY GENSLER ARCHITECTS

The architecture fully reflects the dynamic attitude of Trump Tower Jeddah. Standing out from the cluttered panorama as it recalls a piece of art rather than a conventional tower.

Crafted by Gensler Architects, the most avantgarde designers of our time, the Trump Tower Jeddah embodies a shape that reshapes the city around it. A sculpture to inhabit, giving every floor a new perspective of the world.



Design by **Gensler**





LIVE ON HIGHER GROUND

There's a simple secret behind the blueprint of the Trump Tower, Jeddah: It's the relentless pursuit of excellence. It's about going beyond what is expected and redefining what is possible. Every vision begins with an unwavering commitment to perfection, where no detail is too small, and no ambition too bold. It's about creating not just spaces, but experiences that elevate every moment. Here, luxury is not a norm—it's a promise to always aim higher.

THE TRUMP *PRIVATE CLUB*

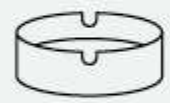


THE KINGDOM'S
FIRST
MEMBERS-ONLY
SOCIAL CLUB

THE TRUMP PRIVATE CLUB *SERVICES*



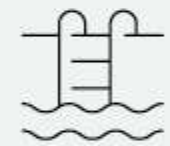
MEETING ROOMS



CIGAR LOUNGE



FINE DINING



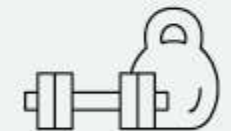
POOL



KIDS POOL



JACUZZI



GYM



YOGA ZONE

Access is exclusive to members by invitation only.
However, as an investor, you hold the privilege to
apply for membership.





TRUMP







THE TRUMP PRIVATE CLUB *GROUND FLOOR*



- 01**
THE TRUMP PRIVATE CLUB
RECEPTION
- 02**
SCENIC LIFT
- 03**
THE TRUMP PRIVATE CLUB
RECEPTION - PODIUM LEVEL 6
- 04**
MEETING ROOM
- 05**
BAR LOUNGE
- 06**
RESTAURANT & BAR
- 07**
PRIVATE DINING

THE TRUMP PRIVATE CLUB

PODIUM LEVEL 6



- | | |
|----------------------|--------------------------|
| 01
SCENIC LIFT | 08
CIGAR LOUNGE |
| 02
RECEPTION | 09
PRIVATE LOUNGE |
| 03
FITNESS CENTRE | 10
RESTAURANT & BAR |
| 04
CHANGING ROOM | 11
JACUZZI |
| 05
YOGA ZONE | 12
MAIN SWIMMING POOL |
| 06
BAR | 13
KIDS BEACH POOL |
| 07
MEETING ROOM | 14
CABANAS |

RESIDENCES





Experience a space where grandeur meets grace. With bespoke finishes, striking design elements, and meticulous craftsmanship, each residence is a sanctuary for those who seek *unchartered heights of luxury living*.



A view reserved for the exceptional.
The Red Sea is a striking backdrop
to life at Trump Tower Jeddah.













PROJECT *DETAILS*

Project Name

TRUMP TOWER JEDDAH

Number of Floors

47

Unit Types

1, 2, 3 & 4 BEDROOM APARTMENT

3 & 4 BEDROOM PENTHOUSE

Completion Date

DECEMBER 2029

Registration Fees

5% ON COMPLETION

Service Charges

75 SAR/SQM

DARGLOBAL

TRUMP
THE TRUMP ORGANIZATION



SIZE RANGE & STARTING PRICES

<i>Unit Type</i>	<i>Min. Area (SQM)</i>	<i>Max. Area (SQM)</i>	<i>Starting Price (SAR)</i>
1 BEDROOM APARTMENT	70	102	1,762,900
2 BEDROOM APARTMENT	99	158	2,524,500
3 BEDROOM APARTMENT	145	170	4,270,700
4 BEDROOM APARTMENT	180	180	6,043,500
3 BEDROOM PENTHOUSE	300	312	12,142,400
4 BEDROOM PENTHOUSE	365	365	15,339,660



SPECIFICATIONS

GENERAL

External Glazing Double Glazed Windows

LOBBY

Floor Marble or equivalent
 Skirting Marble or equivalent
 Walls Plastered walls with emulsion paint
 Accent Walls Wall paneling in wood/marble and/or Brand inspired wall finish
 Ceiling Gypsum ceiling with emulsion paint

LIVING ROOM / DINING

Floor Marble-look Porcelain Slab Tiles or equivalent
 Skirting Marble-look Porcelain Slab Tiles or equivalent
 Walls Plastered walls with emulsion paint
 Accent Walls Accent wallcovering or equivalent
 Ceiling Gypsum ceiling with emulsion paint

KITCHEN

Floor Marble-look Porcelain Slab Tiles or equivalent
 Skirting Marble-look Porcelain Slab Tiles or equivalent
 Walls Plastered walls with emulsion paint
 Ceiling Gypsum ceiling with emulsion paint
 Countertop & backsplash Engineered Stone or equivalent
 Cabinets Joinery with laminate finish
 Appliances High-end Stainless Steel Kitchen Sink, Built-in Fridge, Cooker, Oven, Hood and Dishwasher
 Brand: Smeg or Equivalent

BEDROOMS

Floor Marble-look Porcelain Slab Tiles or equivalent
 Skirting Marble-look Porcelain Slab Tiles or equivalent
 Walls Plastered walls with emulsion paint
 Accent Walls Accent wallcovering or equivalent
 Ceiling Gypsum ceiling with emulsion paint
 Wardrobe Built-In joinery with lacquered or laminate finish

BATHROOMS

Floor Porcelain Tiles or equivalent
 Walls Porcelain Tiles or equivalent
 Ceiling Moisture resistant gypsum ceiling finished with paint
 Countertop Engineered Stone or equivalent
 Joinery Joinery with lacquered or laminate finish
 Sanitarywares European Brand Sanitaryware fittings and accessories
 Mirror Included



PAYMENT *PLAN*

20%

Down Payment

Upon signing the Contract

10%

Third Instalment

Upon completion of the 5th floor

10%

Sixth Instalment

Upon completion of the 20th floor

10%

First Instalment

Upon completion of the Ground Floor

10%

Fourth Instalment

Upon completion of the 10th floor

10%

Seventh Instalment

Upon completion of the 30th Floor

10%

Second Instalment

Upon completion of the podium

10%

Fifth Instalment

Upon completion of the 15th floor

10%

Final Instalment

Upon completion



FLOOR *PLANS*



1 BEDROOM APARTMENT

Type A



UNIT AREA

SQM

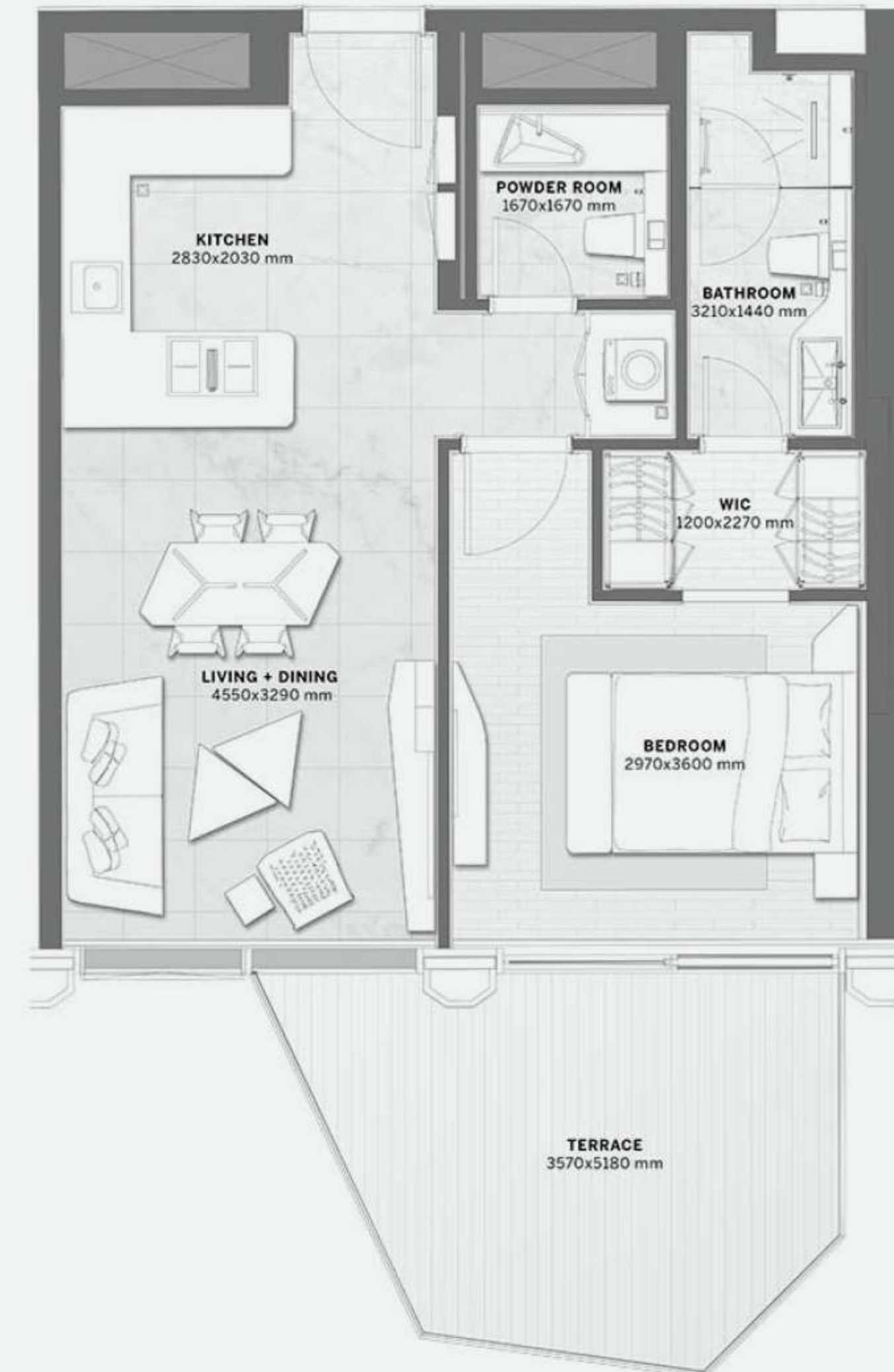
77.22 - 77.22

SQFT

831 - 831

1 BEDROOM APARTMENT

Type C



UNIT AREA

SQM

77.57 - 77.57

SQFT

835 - 835

1 BEDROOM APARTMENT

Type AS



UNIT AREA

SQM

102.3 - 102.3

SQFT

1101 - 1101

1 BEDROOM APARTMENT

Type BS



UNIT AREA

SQM

70.3 - 70.3

SQFT

756 - 756

1 BEDROOM APARTMENT

Type CS



UNIT AREA

SQM

102.1 - 102.1

SQFT

1099 - 1099

2 BEDROOM APARTMENTS

Type AS



UNIT AREA

SQM

98.75 - 98.75

SQFT

1063 - 1063

2 BEDROOM APARTMENTS

Type BS



UNIT AREA

SQM

127.85 - 127.85

SQFT

1376 - 1376

2 BEDROOM APARTMENTS

Type CS



UNIT AREA

SQM

106.5 - 109

SQFT

1146 - 1173

2 BEDROOM APARTMENTS

Type DS



UNIT AREA

SQM

125.9 - 157.9

SQFT

1355 - 1699

2 BEDROOM APARTMENTS

Type ES



UNIT AREA

SQM

112.6 - 112.6

SQFT

1212 - 1212

2 BEDROOM APARTMENTS

Type FS



UNIT AREA

SQM

108.3 - 139.92

SQFT

1165 - 1506

3 BEDROOM APARTMENTS

Type AS



UNIT AREA

SQM

144.9 - 144.9

SQFT

1559 - 1559

3 BEDROOM APARTMENTS

Type B3



UNIT AREA

SQM

169.5 - 169.5

SQFT

1824 - 1824

4 BEDROOM APARTMENTS

Type A



UNIT AREA

SQM

179.6 - 179.6

SQFT

1933 - 1933

PENTHOUSE TYPE - A

3 Bedrooms



UNIT AREA

SQM

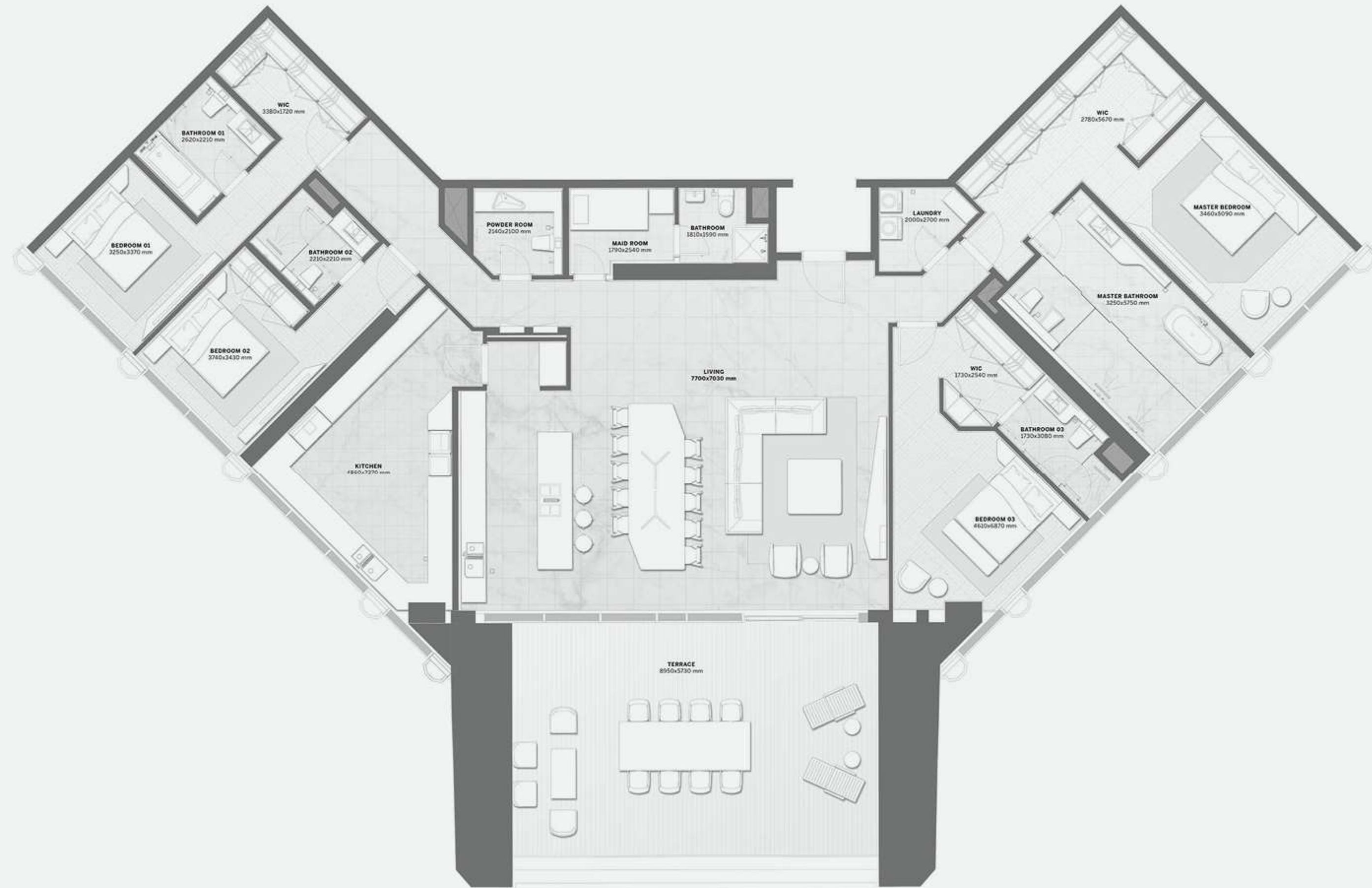
SQFT

312.09 - 312.09

3359 - 3359

PENTHOUSE TYPE - B

4 Bedrooms



UNIT AREA

SQM

SQFT

365.23 - 365.23

3931 - 3931

PENTHOUSE
TYPE - C
3 Bedrooms



UNIT AREA	
SQM	SQFT
303.56 - 303.56	3267 - 3267



EXPRESSION OF INTEREST
NOW OPEN